

Data Path : Z:\voasrv\HPCHEM1\MSVOA_V\Data\VV031424\
 Data File : VV034630.D
 Acq On : 15 Mar 2024 02:36
 Operator : SY/MD
 Sample : P1751-09
 Misc : 5.0mL/MSVOA_V/WATER
 ALS Vial : 45 Sample Multiplier: 1

Instrument :
 MSVOA_V
 ClientSampleId :
 YCL04

Integration Parameters: LSCINT.P

Integrator: RTE
 Smoothing : OFF
 Sampling : 1
 Start Thrs: 0.2
 Stop Thrs : 0

Filtering: 5
 Min Area: 0 % of largest Peak
 Max Peaks: 100
 Peak Location: TOP

If leading or trailing edge < 100 prefer < Baseline drop else tangent >
 Peak separation: 5

Method : Z:\voasrv\HPCHEM1\MSVOA_V\Method\SFAMVLM022924WMA.M
 Title : VOC Analysis

Signal : TIC: VV034631.D\data.ms

peak #	R.T. min	first scan	max scan	last scan	PK TY	peak height	corr. area	corr. % max.	% of total
1	1.278	67	74	91	rVB	185198	189359	12.88%	1.666%
2	1.529	145	152	169	rVB	159635	186190	12.66%	1.638%
3	2.063	307	318	329	rBV3	452243	760067	51.68%	6.686%
4	2.249	362	376	427	rBV	420944	1470637	100.00%	12.936%
5	2.706	509	518	540	rVB3	20957	43936	2.99%	0.386%
6	2.841	557	560	562	rBV2	283	156	0.01%	0.001%
7	3.021	613	616	622	rVB4	562	499	0.03%	0.004%
8	3.050	622	625	626	rBV	333	158	0.01%	0.001%
9	3.114	635	645	663	rVB2	19989	40549	2.76%	0.357%
10	3.285	694	698	700	rBV2	262	187	0.01%	0.002%
11	3.468	752	755	757	rBV2	180	129	0.01%	0.001%
12	3.587	789	792	796	rVB2	345	243	0.02%	0.002%
13	3.651	808	812	816	rVB2	184	150	0.01%	0.001%
14	3.677	816	820	822	rBV	176	124	0.01%	0.001%
15	3.706	826	829	830	rBV	223	90	0.01%	0.001%
16	3.789	846	855	893	rBV	102710	295557	20.10%	2.600%
17	4.249	983	998	1031	rBV	208110	535887	36.44%	4.714%
18	4.513	1066	1080	1106	rVB	88770	228497	15.54%	2.010%
19	4.683	1131	1133	1135	rBV2	289	147	0.01%	0.001%
20	4.767	1157	1159	1160	rBV	330	145	0.01%	0.001%
21	4.786	1163	1165	1169	rVB2	340	196	0.01%	0.002%
22	4.957	1201	1218	1235	rBV2	470215	1225648	83.34%	10.781%
23	5.313	1326	1329	1331	rBV	444	263	0.02%	0.002%
24	5.413	1358	1360	1364	rBV	119	81	0.01%	0.001%
25	5.432	1364	1366	1370	rBV2	185	127	0.01%	0.001%
26	5.477	1378	1380	1383	rVB	320	135	0.01%	0.001%
27	5.532	1387	1397	1424	rBV	331809	689451	46.88%	6.064%
28	5.838	1483	1492	1519	rVB6	17635	44700	3.04%	0.393%
29	5.944	1520	1525	1526	rBV2	491	281	0.02%	0.002%
30	5.989	1526	1539	1567	rBV	269421	559168	38.02%	4.918%
31	6.217	1608	1610	1614	rVB3	433	308	0.02%	0.003%
32	6.243	1616	1618	1619	rBV2	281	96	0.01%	0.001%
33	6.268	1624	1626	1630	rBV2	309	218	0.01%	0.002%
34	6.310	1636	1639	1640	rBV	175	106	0.01%	0.001%
35	6.362	1652	1655	1657	rBV	232	90	0.01%	0.001%
36	6.465	1686	1687	1691	rBV	173	112	0.01%	0.001%

Data Path : Z:\voasrv\HPCHEM1\MSVOA_V\Data\VW031424\
 Data File : VW034630.D
 Acq On : 15 Mar 2024 02:36
 Operator : SY/MD
 Sample : P1751-09
 Misc : 5.0mL/MSVOA_V/WATER
 ALS Vial : 45 Sample Multiplier: 1

Instrument :
 MSVOA_V
 ClientSampleId :
 YCL04

Integration Parameters: LSCINT.P

Integrator: RTE
 Smoothing : OFF
 Sampling : 1
 Start Thrs : 0.2
 Stop Thrs : 0

Filtering: 5
 Min Area: 0 % of largest Peak
 Max Peaks: 100
 Peak Location: TOP

If leading or trailing edge < 100 prefer < Baseline drop else tangent >
 Peak separation: 5

Method : Z:\voasrv\HPCHEM1\MSVOA_V\Method\SFAMVLM022924WMA.M
 Title : VOC Analysis

37	6.503	1696	1699	1700	rBV3	451	278	0.02%	0.002%
38	6.561	1713	1717	1720	rVB3	174	137	0.01%	0.001%
39	6.587	1720	1725	1729	rBV2	860	1091	0.07%	0.010%
40	6.744	1772	1774	1776	rBV	245	116	0.01%	0.001%
41	6.786	1784	1787	1791	rVB2	241	144	0.01%	0.001%
42	6.809	1791	1794	1797	rBV2	148	82	0.01%	0.001%
43	6.915	1817	1827	1853	rBV	131355	249246	16.95%	2.192%
44	7.104	1884	1886	1888	rBV2	263	138	0.01%	0.001%
45	7.243	1918	1929	1957	rBV	535661	946643	64.37%	8.327%
46	7.555	2017	2026	2054	rBV	86913	163059	11.09%	1.434%
47	7.738	2080	2083	2088	rVB	601	413	0.03%	0.004%
48	7.764	2088	2091	2093	rBV3	442	310	0.02%	0.003%
49	7.876	2116	2126	2133	rBV4	1486	2602	0.18%	0.023%
50	8.024	2162	2172	2210	rBV	362560	686224	46.66%	6.036%
51	8.554	2334	2337	2338	rBV	276	121	0.01%	0.001%
52	8.583	2342	2346	2347	rBV	396	280	0.02%	0.002%
53	8.641	2362	2364	2367	rVB	250	127	0.01%	0.001%
54	8.690	2376	2379	2380	rBV	295	180	0.01%	0.002%
55	8.725	2387	2390	2392	rVB2	159	92	0.01%	0.001%
56	8.783	2397	2408	2432	rBV	502248	826951	56.23%	7.274%
57	9.011	2476	2479	2482	rBV2	507	258	0.02%	0.002%
58	9.156	2520	2524	2527	rBV3	420	261	0.02%	0.002%
59	9.410	2600	2603	2607	rVB2	338	208	0.01%	0.002%
60	9.442	2607	2613	2616	rBV2	224	272	0.02%	0.002%
61	9.558	2645	2649	2654	rBV3	380	316	0.02%	0.003%
62	9.583	2654	2657	2663	rBV2	227	235	0.02%	0.002%
63	9.696	2687	2692	2694	rBV2	221	232	0.02%	0.002%
64	9.780	2716	2718	2721	rVB2	237	86	0.01%	0.001%
65	9.882	2748	2750	2754	rBV	270	150	0.01%	0.001%
66	9.953	2763	2772	2786	rBV3	4418	8298	0.56%	0.073%
67	10.069	2805	2808	2810	rBV	113	82	0.01%	0.001%
68	10.152	2821	2834	2858	rBV	363541	585548	39.82%	5.151%
69	10.326	2882	2888	2897	rVB4	2455	3157	0.21%	0.028%
70	10.365	2897	2900	2902	rBV	173	104	0.01%	0.001%
71	10.442	2921	2924	2926	rVV	189	106	0.01%	0.001%
72	10.484	2932	2937	2941	rBV3	236	307	0.02%	0.003%
73	10.587	2967	2969	2970	rBV3	177	89	0.01%	0.001%
74	10.648	2984	2988	2991	rBV	275	201	0.01%	0.002%
75	10.963	3083	3086	3088	rBV	191	127	0.01%	0.001%
76	11.050	3110	3113	3115	rBV	212	136	0.01%	0.001%

Data Path : Z:\voasrv\HPCHEM1\MSVOA_V\Data\VV031424\
 Data File : VV034630.D
 Acq On : 15 Mar 2024 02:36
 Operator : SY/MD
 Sample : P1751-09
 Misc : 5.0mL/MSVOA_V/WATER
 ALS Vial : 45 Sample Multiplier: 1

Instrument :
 MSVOA_V
 ClientSampleId :
 YCL04

Integration Parameters: LSCINT.P

Integrator: RTE
 Smoothing : OFF
 Sampling : 1
 Start Thrs : 0.2
 Stop Thrs : 0

Filtering: 5
 Min Area: 0 % of largest Peak
 Max Peaks: 100
 Peak Location: TOP

If leading or trailing edge < 100 prefer < Baseline drop else tangent >
 Peak separation: 5

Method : Z:\voasrv\HPCHEM1\MSVOA_V\Method\SFAMVLM022924WMA.M
 Title : VOC Analysis

77	11.185	3144	3155	3179	rBV	503682	771210	52.44%	6.784%
78	11.416	3224	3227	3232	rBV2	318	330	0.02%	0.003%
79	11.442	3232	3235	3237	rBV2	197	119	0.01%	0.001%
80	11.561	3259	3272	3296	rBV	530944	840514	57.15%	7.393%
81	11.779	3338	3340	3343	rBV2	265	177	0.01%	0.002%
82	11.812	3348	3350	3351	rBV2	301	109	0.01%	0.001%
83	11.853	3361	3363	3366	rBV	291	139	0.01%	0.001%
84	11.963	3394	3397	3399	rBV3	445	276	0.02%	0.002%
85	12.297	3498	3501	3505	rBV2	325	269	0.02%	0.002%
86	12.361	3519	3521	3523	rBV	138	85	0.01%	0.001%
87	12.390	3528	3530	3533	rBV	197	135	0.01%	0.001%
88	12.432	3540	3543	3544	rBV	241	127	0.01%	0.001%
89	12.490	3559	3561	3564	rBV	255	140	0.01%	0.001%
90	12.545	3575	3578	3582	rBV2	342	271	0.02%	0.002%
91	12.606	3595	3597	3603	rVB	369	236	0.02%	0.002%
92	12.638	3603	3607	3608	rBV	323	195	0.01%	0.002%
93	12.889	3682	3685	3689	rBV	314	247	0.02%	0.002%
94	13.127	3755	3759	3760	rBV	309	238	0.02%	0.002%
95	13.255	3797	3799	3802	rBV2	356	224	0.02%	0.002%
96	13.348	3827	3828	3831	rBV2	313	177	0.01%	0.002%
97	13.374	3835	3836	3837	rBV2	355	112	0.01%	0.001%
98	13.519	3879	3881	3885	rBV2	326	189	0.01%	0.002%
99	13.815	3968	3973	3978	rBV3	509	638	0.04%	0.006%
100	14.123	4067	4069	4073	rBV3	533	449	0.03%	0.004%

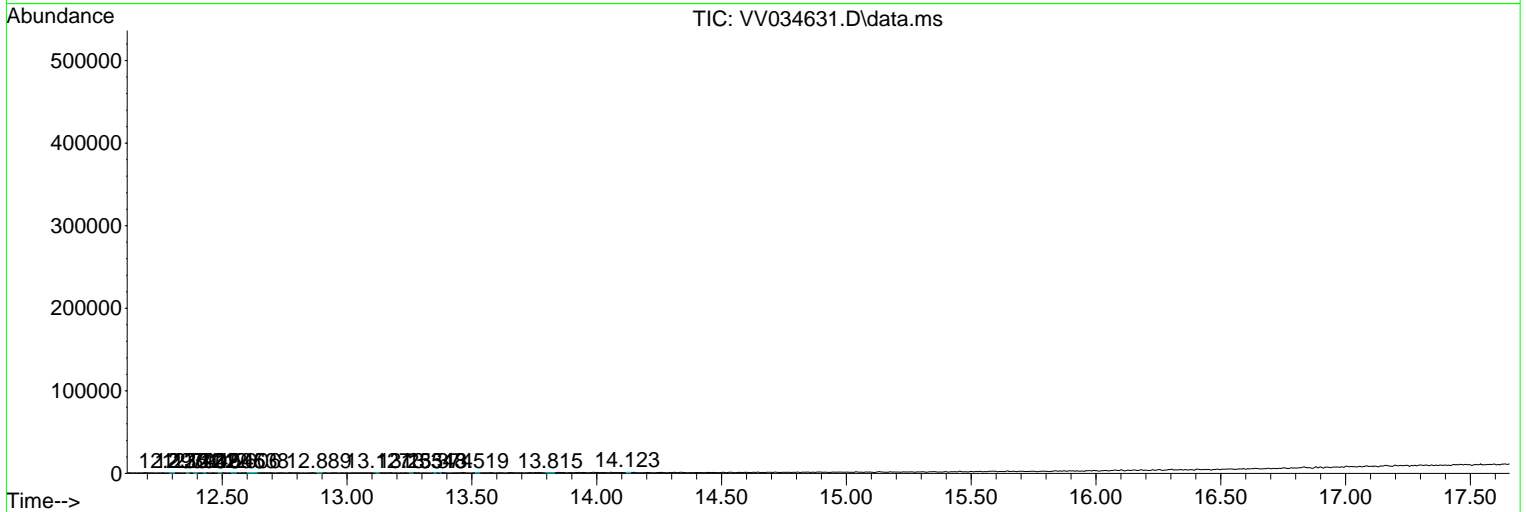
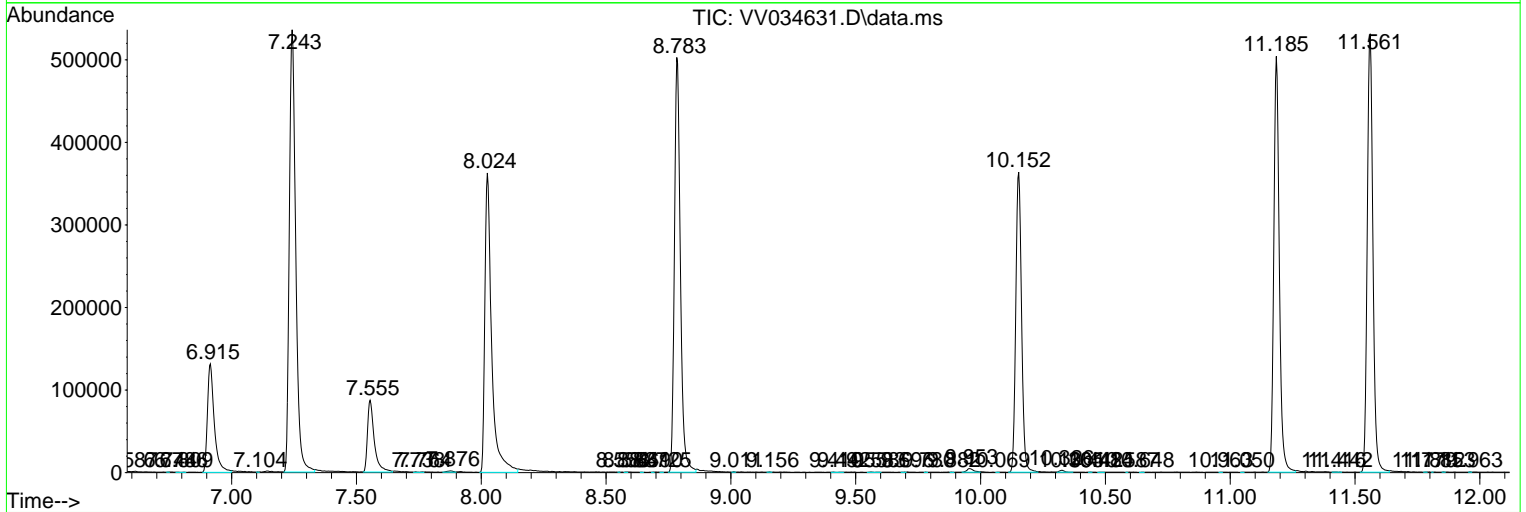
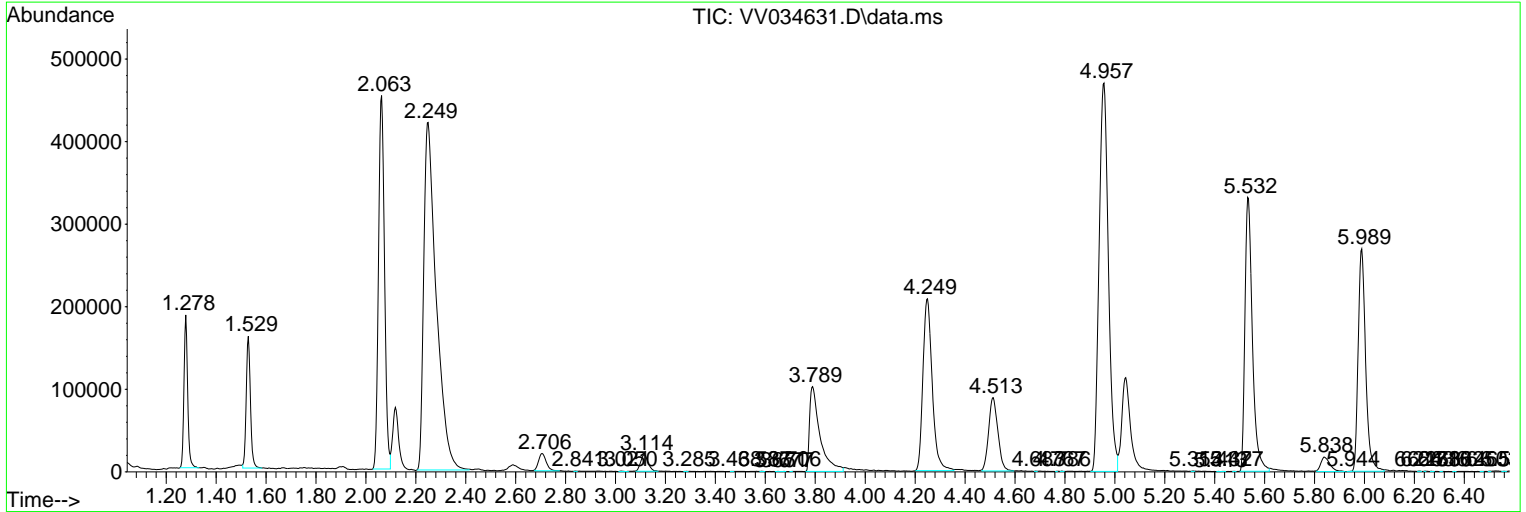
Sum of corrected areas: 11368700

Data Path : Z:\voasrv\HPCHEM1\MSVOA_V\Data\VV031424\
 Data File : VV034630.D
 Acq On : 15 Mar 2024 02:36
 Operator : SY/MD
 Sample : P1751-09
 Misc : 5.0mL/MSVOA_V/WATER
 ALS Vial : 45 Sample Multiplier: 1

Instrument :
 MSVOA_V
 ClientSampleId :
 YCL04

Quant Method : Z:\voasrv\HPCHEM1\MSVOA_V\Method\SFAMVLM022924WMA.M
 Quant Title : VOC Analysis

TIC Library : C:\Database\NIST20.L
 TIC Integration Parameters: LSCINT.P



Data Path : Z:\voasrv\HPCHEM1\MSVOA_V\Data\VV031424\
 Data File : VV034630.D
 Acq On : 15 Mar 2024 02:36
 Operator : SY/MD
 Sample : P1751-09
 Misc : 5.0mL/MSVOA_V/WATER
 ALS Vial : 45 Sample Multiplier: 1

Instrument :
 MSVOA_V
 ClientSampleId :
 YCL04

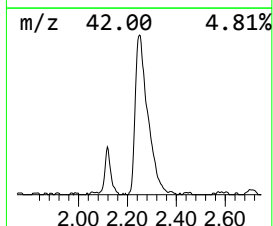
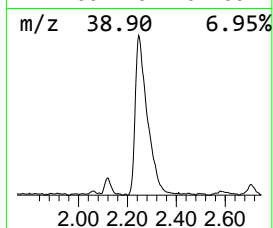
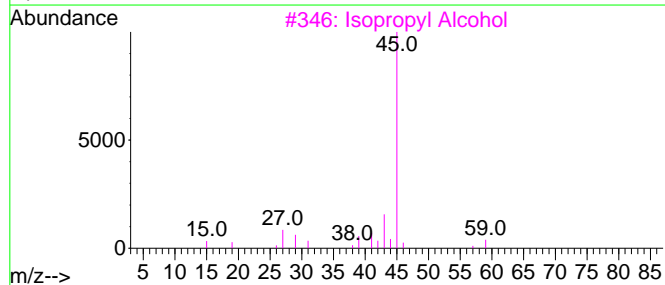
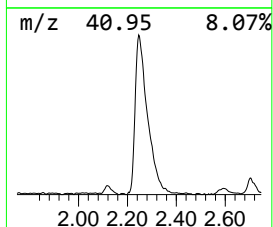
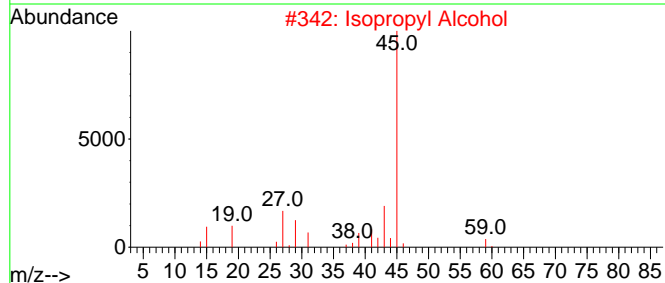
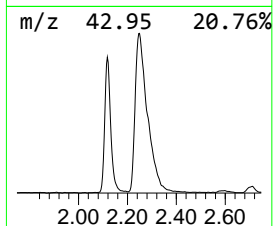
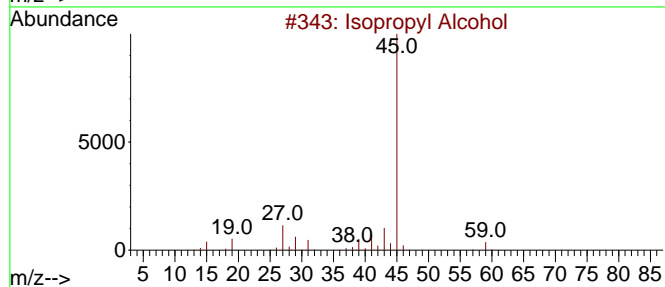
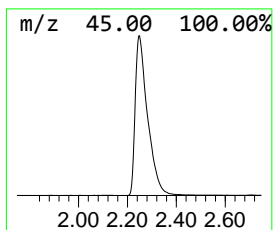
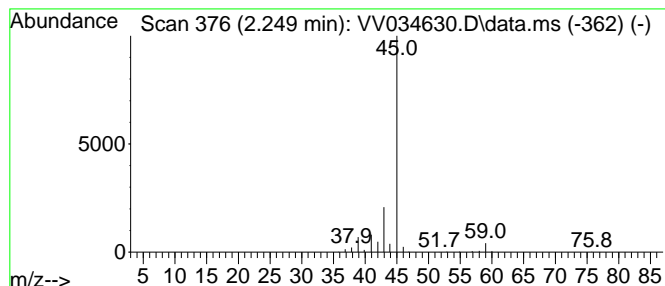
Quant Method : Z:\voasrv\HPCHEM1\MSVOA_V\Method\SFAMVLM022924WMA.M
 Quant Title : VOC Analysis

TIC Library : C:\Database\NIST20.L
 TIC Integration Parameters: LSCINT.P

 Peak Number 1 Isopropyl Alcohol Concentration Rank 1

R.T.	EstConc	Area	Relative to ISTD	R.T.
2.249	106.65 ug/L	1470640	1,4-Difluorobenzene	5.535

Hit#	of	5	Tentative ID	MW	MolForm	CAS#	Qual
1			Isopropyl Alcohol	60	C3H8O	000067-63-0	78
2			Isopropyl Alcohol	60	C3H8O	000067-63-0	78
3			Isopropyl Alcohol	60	C3H8O	000067-63-0	64
4			Isopropyl Alcohol	60	C3H8O	000067-63-0	64
5			Isopropyl Alcohol	60	C3H8O	000067-63-0	56



Data Path : Z:\voasrv\HPCHEM1\MSVOA_V\Data\VV031424\
Data File : VV034630.D
Acq On : 15 Mar 2024 02:36
Operator : SY/MD
Sample : P1751-09
Misc : 5.0mL/MSVOA_V/WATER
ALS Vial : 45 Sample Multiplier: 1

Instrument :
MSVOA_V
ClientSampleId :
YCL04

Quant Method : Z:\voasrv\HPCHEM1\MSVOA_V\Method\SFAMVLM022924WMA.M
Quant Title : VOC Analysis

TIC Library : C:\Database\NIST0.L
TIC Integration Parameters: LSCINT.P

TIC Top Hit name	RT	EstConc	Units	Response	--Internal Standard--			
					#	RT	Resp	Conc
Isopropyl Alcohol	2.249	106.7	ug/L	1470640	1	5.535	689451	50.0