

Data Path : Z:\voasrv\HPCHEM1\MSVOA_V\Data\VW031722\
 Data File : VW025081.D
 Acq On : 17 Mar 2022 14:46
 Operator : SY/MD
 Sample : N1941-01DL 100X
 Misc : 25mL/MSVOA_V/WATER
 ALS Vial : 10 Sample Multiplier: 1

Instrument :
 MSVOA_V
 ClientSampleId :
 JNLF1DL

Quant Time: Mar 18 02:22:06 2022
 Quant Method : Z:\voasrv\HPCHEM1\MSVOA_V\Method\SFAMVTR031522WMA.M
 Quant Title : TRACE VOA SFAM1.0
 QLast Update : Fri Mar 18 02:20:05 2022
 Response via : Initial Calibration

Compound	R.T.	QIon	Response	Conc	Units	Dev(Min)

Internal Standards						
1) 1,4-Difluorobenzene	5.619	114	127432	5.000	ug/L	0.00
28) Chlorobenzene-d5	8.854	117	120448	5.000	ug/L	0.00
58) 1,4-Dichlorobenzene-d4	11.249	152	53548	5.000	ug/L	0.00
System Monitoring Compounds						
4) Vinyl Chloride-d3	1.307	65	58833	5.848	ug/L	0.00
Spiked Amount	5.000	Range 40 - 130	Recovery	=	117.000%	
7) Chloroethane-d5	1.568	69	44509	6.042	ug/L	0.00
Spiked Amount	5.000	Range 65 - 130	Recovery	=	120.800%	
11) 1,1-Dichloroethene-d2	2.108	63	73692	4.532	ug/L	0.00
Spiked Amount	5.000	Range 60 - 125	Recovery	=	90.600%	
20) 2-Butanone-d5	3.912	46	76463	62.888	ug/L	0.00
Spiked Amount	50.000	Range 40 - 130	Recovery	=	125.780%	
24) Chloroform-d	4.352	84	92571	5.548	ug/L	0.00
Spiked Amount	5.000	Range 70 - 125	Recovery	=	111.000%	
26) 1,2-Dichloroethane-d4	5.034	65	40879	5.860	ug/L	0.00
Spiked Amount	5.000	Range 70 - 130	Recovery	=	117.200%	
32) Benzene-d6	5.050	84	195612	5.598	ug/L	0.00
Spiked Amount	5.000	Range 70 - 125	Recovery	=	112.000%	
36) 1,2-Dichloropropane-d6	6.069	67	57157	5.689	ug/L	0.00
Spiked Amount	5.000	Range 60 - 140	Recovery	=	113.800%	
41) Toluene-d8	7.317	98	170028	5.339	ug/L	0.00
Spiked Amount	5.000	Range 70 - 130	Recovery	=	106.800%	
43) trans-1,3-Dichloroprop...	7.625	79	16521	4.717	ug/L	0.00
Spiked Amount	5.000	Range 55 - 130	Recovery	=	94.400%	
46) 2-Hexanone-d5	8.092	63	62109	51.986	ug/L	0.00
Spiked Amount	50.000	Range 45 - 130	Recovery	=	103.980%	
56) 1,1,2,2-Tetrachloroeth...	10.217	84	32604	5.516	ug/L	0.00
Spiked Amount	5.000	Range 65 - 120	Recovery	=	110.400%	
66) 1,2-Dichlorobenzene-d4	11.622	152	53144	5.862	ug/L	0.00
Spiked Amount	5.000	Range 80 - 120	Recovery	=	117.200%	

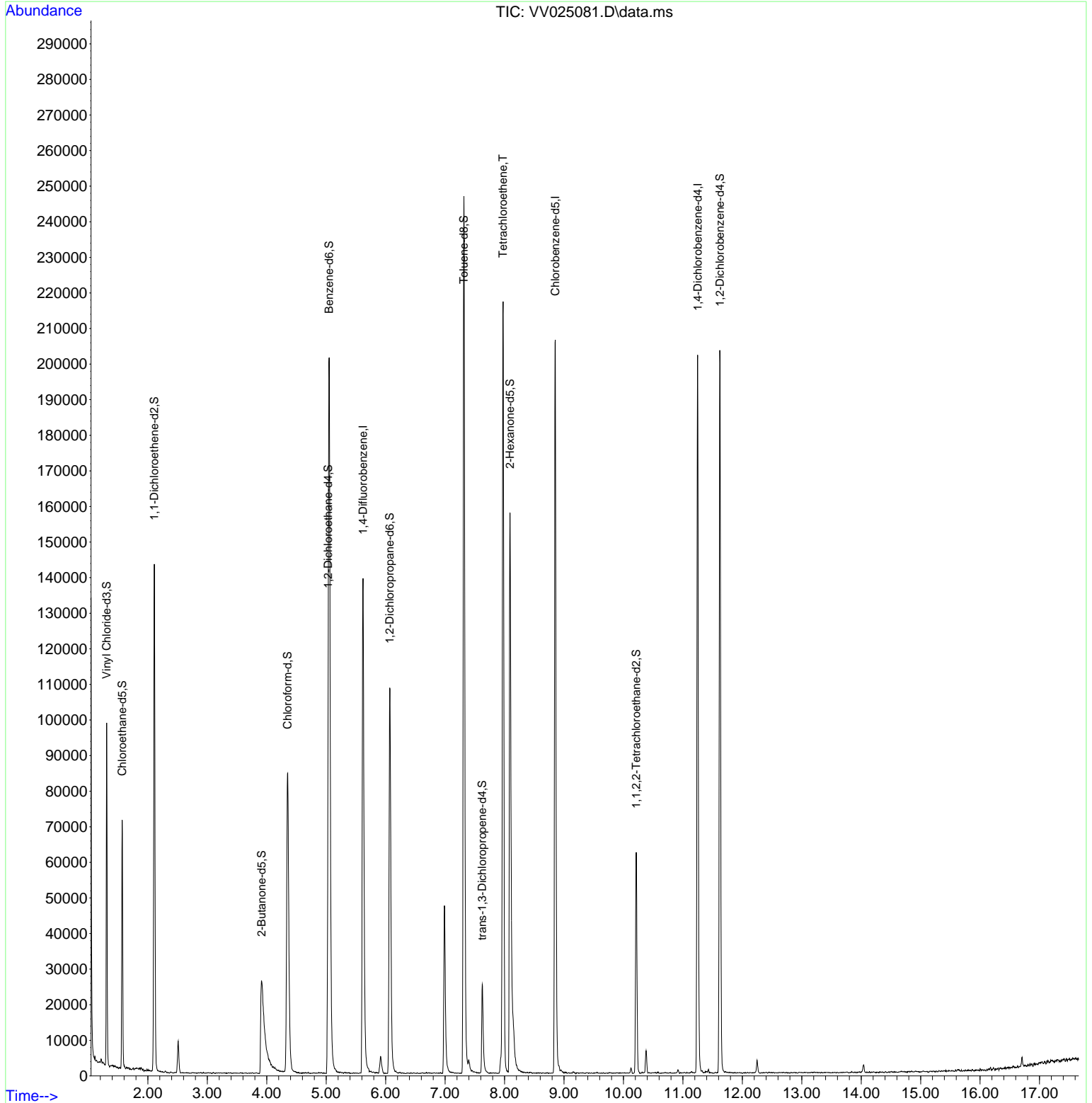
Target Compounds						Qvalue
47) Tetrachloroethene	7.976	164	48621	6.626	ug/L	97

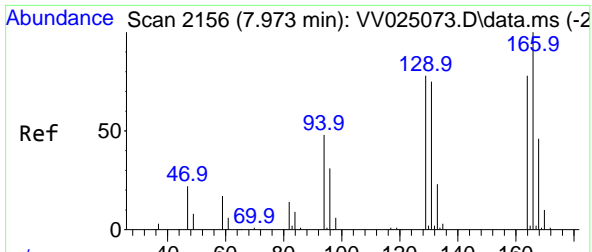
(#) = qualifier out of range (m) = manual integration (+) = signals summed

Data Path : Z:\voasrv\HPCHEM1\MSVOA_V\Data\VV031722\
 Data File : VV025081.D
 Acq On : 17 Mar 2022 14:46
 Operator : SY/MD
 Sample : N1941-01DL 100X
 Misc : 25mL/MSVOA_V/WATER
 ALS Vial : 10 Sample Multiplier: 1

Instrument :
 MSVOA_V
 ClientSampleId :
 JNLF1DL

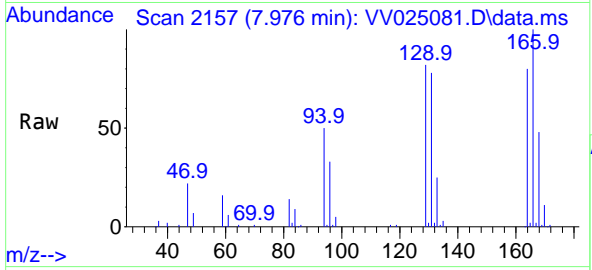
Quant Time: Mar 18 02:22:06 2022
 Quant Method : Z:\voasrv\HPCHEM1\MSVOA_V\Method\SFAMVTR031522WMA.M
 Quant Title : TRACE VOA SFAM1.0
 QLast Update : Fri Mar 18 02:20:05 2022
 Response via : Initial Calibration





#47
 Tetrachloroethene
 Concen: 6.626 ug/L
 RT: 7.976 min Scan# 2156
 Delta R.T. 0.003 min
 Lab File: VV025081.D
 Acq: 17 Mar 2022 14:46

Instrument :
 MSVOA_V
 ClientSampleId :
 JNLF1DL



Tgt Ion:164 Resp: 48621

Ion	Ratio	Lower	Upper
164	100		
129	102.7	70.3	130.7
131	97.3	69.4	129.0
166	124.5	90.3	167.7

