

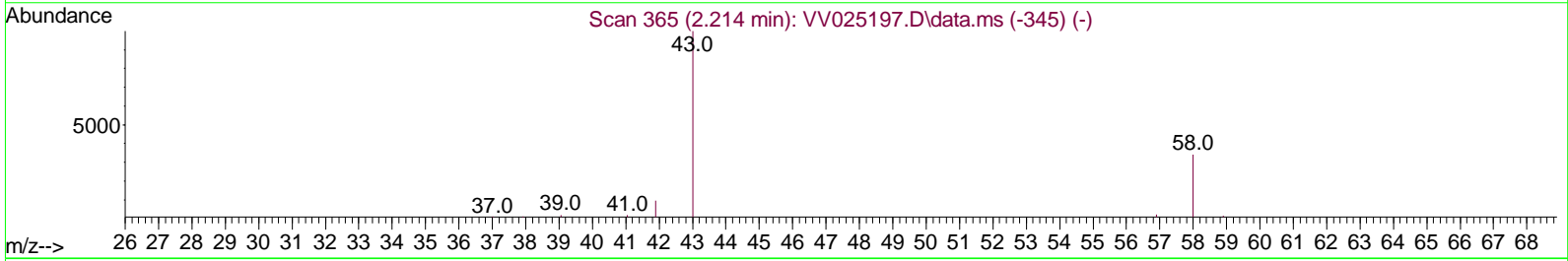
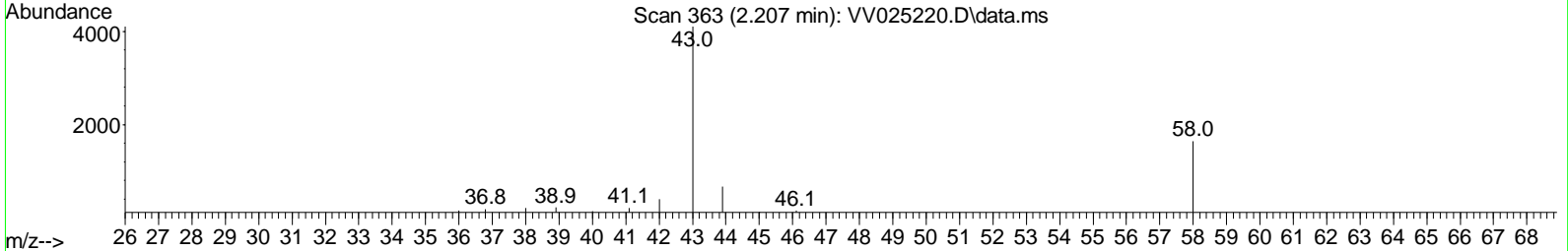
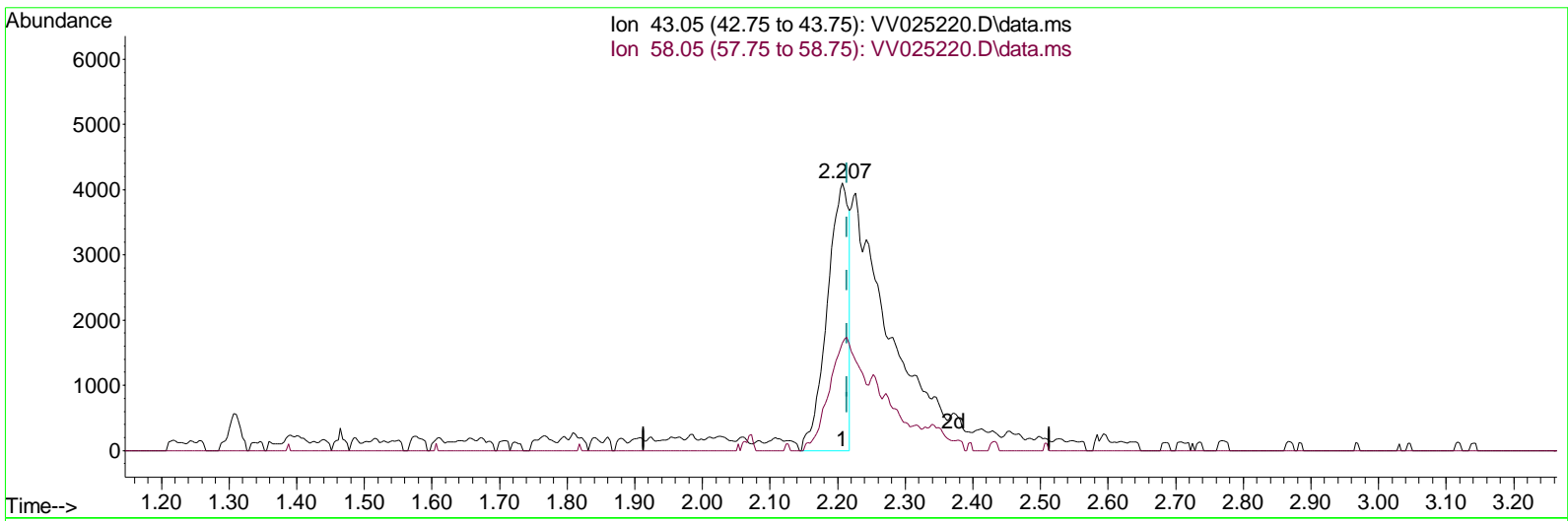
Data Path : Z:\voasrv\HPCHEM1\MSVOA_V\Data\VV032622\
 Data File : VV025220.D
 Acq On : 26 Mar 2022 23:51
 Operator : SY/MD
 Sample : N2097-14
 Mi sc : 25mL/MSVOA_V/WATER
 ALS Vial : 32 Sample Multiplier: 1

Instrument :
 MSVOA_V
ClientSampleId :
 C0AE3

Manual IntegrationsAPPROVED

Reviewed By :John Carlone 03/28/2022
 Supervised By :Mahesh Dadoda 03/28/2022

Quant Time: Mar 28 02:05:35 2022
 Quant Method : Z:\voasrv\HPCHEM1\MSVOA_V\Method\SFAMVTR032622WMA.M
 Quant Title : TRACE VOA SFAM1.0
 QLast Update : Mon Mar 28 01:44:37 2022
 Response via : Initial Calibration



TIC: VV025220.D\data.ms

(13) Acetone (T)

2.207min (-0.006) 8.75 ug/L

response	9002	
Ion	Exp%	Act%
43.05	100.00	100.00
58.05	25.60	63.50#
0.00	0.00	0.00
0.00	0.00	0.00

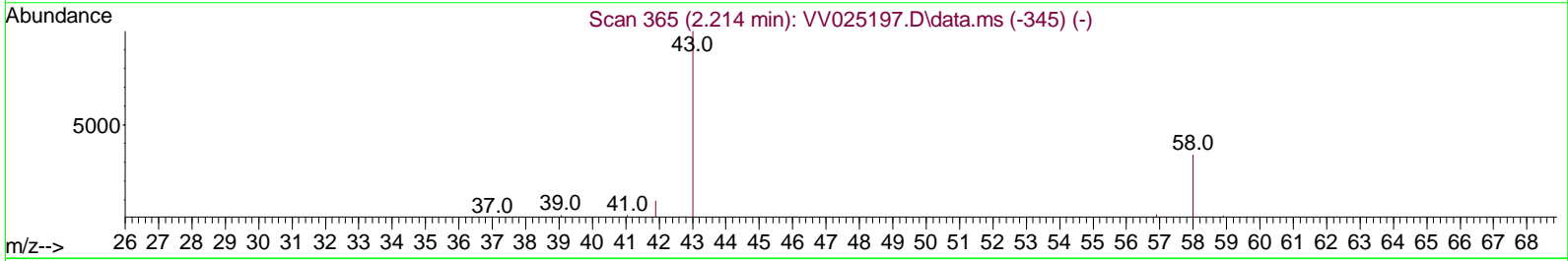
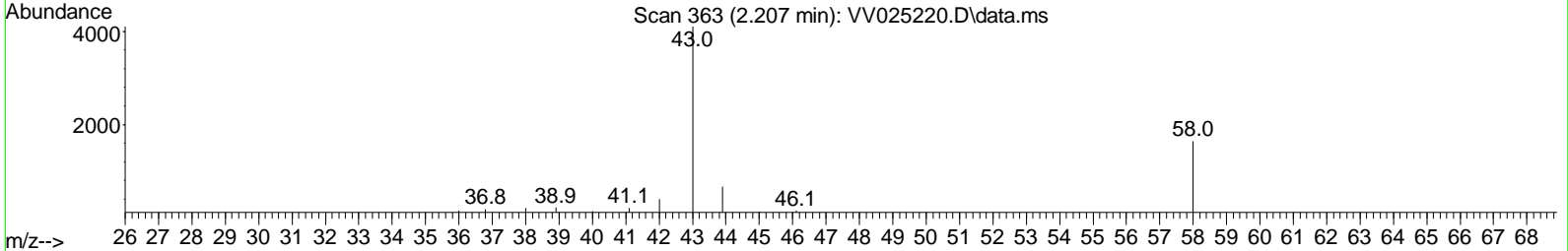
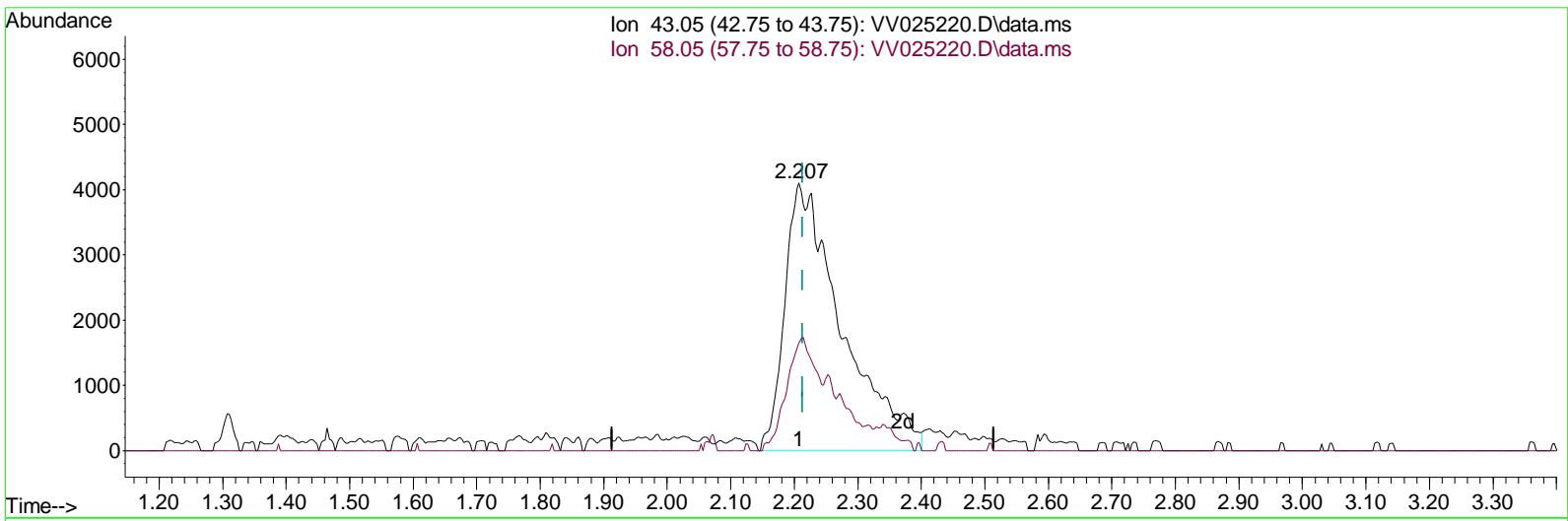
Data Path : Z:\voasrv\HPCHEM1\MSVOA_V\Data\VV032622\
 Data File : VV025220.D
 Acq On : 26 Mar 2022 23:51
 Operator : SY/MD
 Sample : N2097-14
 Mi sc : 25mL/MSVOA_V/WATER
 ALS Vial : 32 Sample Multiplier: 1

Instrument :
 MSVOA_V
ClientSampleId :
 C0AE3

Manual IntegrationsAPPROVED

Reviewed By :John Carlone 03/28/2022
 Supervised By :Mahesh Dadoda 03/28/2022

Quant Time: Mar 28 02:05:35 2022
 Quant Method : Z:\voasrv\HPCHEM1\MSVOA_V\Method\SFAMVTR032622WMA.M
 Quant Title : TRACE VOA SFAM1.0
 QLast Update : Mon Mar 28 01:44:37 2022
 Response via : Initial Calibration



TIC: VV025220.D\data.ms

(13) Acetone (T)

2.207min (-0.006) 24.78 ug/L m

response	25485
Ion	Exp% Act%
43.05	100.00 100.00
58.05	25.60 22.43
0.00	0.00 0.00
0.00	0.00 0.00

Data Path : Z:\voasrv\HPCHEM1\MSVOA_V\Data\V032622\
 Data File : V025220.D
 Acq On : 26 Mar 2022 23:51
 Operator : SY/MD
 Sample : N2097-14
 Misc : 25mL/MSVOA_V/WATER
 ALS Vial : 32 Sample Multiplier: 1

Instrument :
 MSVOA_V
ClientSampleId :
 C0AE3

Manual Integrations APPROVED

Reviewed By : John Carlone 03/28/2022
 Supervised By : Mahesh Dadoda 03/28/2022

Quant Time: Mar 28 02:05:35 2022
 Quant Method : Z:\voasrv\HPCHEM1\MSVOA_V\Method\SFAMVTR032622WMA.M
 Quant Title : TRACE VOA SFAM1.0
 QLast Update : Mon Mar 28 01:44:37 2022
 Response via : Initial Calibration

Compound	R.T.	QI on	Response	Conc	Units	Dev(Min)
Internal Standards						
1) 1,4-Difluorobenzene	5.619	114	144839	5.000	ug/L	0.00
28) Chlorobenzene-d5	8.853	117	140603	5.000	ug/L	0.00
58) 1,4-Dichlorobenzene-d4	11.249	152	61215	5.000	ug/L	0.00
System Monitoring Compounds						
4) Vinyl Chloride-d3	1.307	65	64834	4.792	ug/L	0.00
Spike Amount	5.000	Range 40 - 130	Recovery	=	95.800%	
7) Chloroethane-d5	1.568	69	55402	4.879	ug/L	0.00
Spike Amount	5.000	Range 65 - 130	Recovery	=	97.600%	
11) 1,1-Dichloroethene-d2	2.108	63	101629	3.468	ug/L	0.00
Spike Amount	5.000	Range 60 - 125	Recovery	=	69.400%	
20) 2-Butanone-d5	3.921	46	65092	48.300	ug/L	0.00
Spike Amount	50.000	Range 40 - 130	Recovery	=	96.600%	
24) Chloroform-d	4.352	84	87322	4.946	ug/L	0.00
Spike Amount	5.000	Range 70 - 125	Recovery	=	99.000%	
26) 1,2-Dichloroethane-d4	5.037	65	39818	5.102	ug/L	0.00
Spike Amount	5.000	Range 70 - 130	Recovery	=	102.000%	
32) Benzene-d6	5.053	84	174940	4.918	ug/L	0.00
Spike Amount	5.000	Range 70 - 125	Recovery	=	98.400%	
36) 1,2-Dichloropropane-d6	6.069	67	50009	5.016	ug/L	0.00
Spike Amount	5.000	Range 60 - 140	Recovery	=	100.400%	
41) Toluene-d8	7.317	98	153821	4.715	ug/L	0.00
Spike Amount	5.000	Range 70 - 130	Recovery	=	94.200%	
43) trans-1,3-Dichloroprop...	7.625	79	14762	4.539	ug/L	0.00
Spike Amount	5.000	Range 55 - 130	Recovery	=	90.800%	
46) 2-Hexanone-d5	8.091	63	55528	47.276	ug/L	0.00
Spike Amount	50.000	Range 45 - 130	Recovery	=	94.560%	
56) 1,1,2,2-Tetrachloroeth...	10.214	84	31602	4.754	ug/L	0.00
Spike Amount	5.000	Range 65 - 120	Recovery	=	95.000%	
66) 1,2-Dichlorobenzene-d4	11.622	152	51106	5.198	ug/L	0.00
Spike Amount	5.000	Range 80 - 120	Recovery	=	104.000%	
Target Compounds						
13) Acetone	2.207	43	25485m	24.782	ug/L	
42) Toluene	7.387	91	95110	2.160	ug/L	98
52) Ethyl benzene	9.017	91	12389	0.265	ug/L	100
53) m,p-Xylene	9.140	106	19421	1.069	ug/L	97
54) o-Xylene	9.545	106	5141	0.296	ug/L	96

(#) = qualifier out of range (m) = manual integration (+) = signals summed

Data Path : Z:\voasrv\HPCHEM1\MSVOA_V\Data\VV032622\
 Data File : VV025220.D
 Acq On : 26 Mar 2022 23:51
 Operator : SY/MD
 Sample : N2097-14
 Mi sc : 25mL/MSVOA_V/WATER
 ALS Vial : 32 Sample Multiplier: 1

Instrument :
 MSVOA_V
ClientSampleId :
 C0AE3

Manual IntegrationsAPPROVED

Reviewed By :John Carlone 03/28/2022
 Supervised By :Mahesh Dadoda 03/28/2022

Quant Time: Mar 28 02:05:35 2022
 Quant Method : Z:\voasrv\HPCHEM1\MSVOA_V\Method\SFAMVTR032622WMA.M
 Quant Title : TRACE VOA SFAM1.0
 QLast Update : Mon Mar 28 01:44:37 2022
 Response via : Initial Calibration

