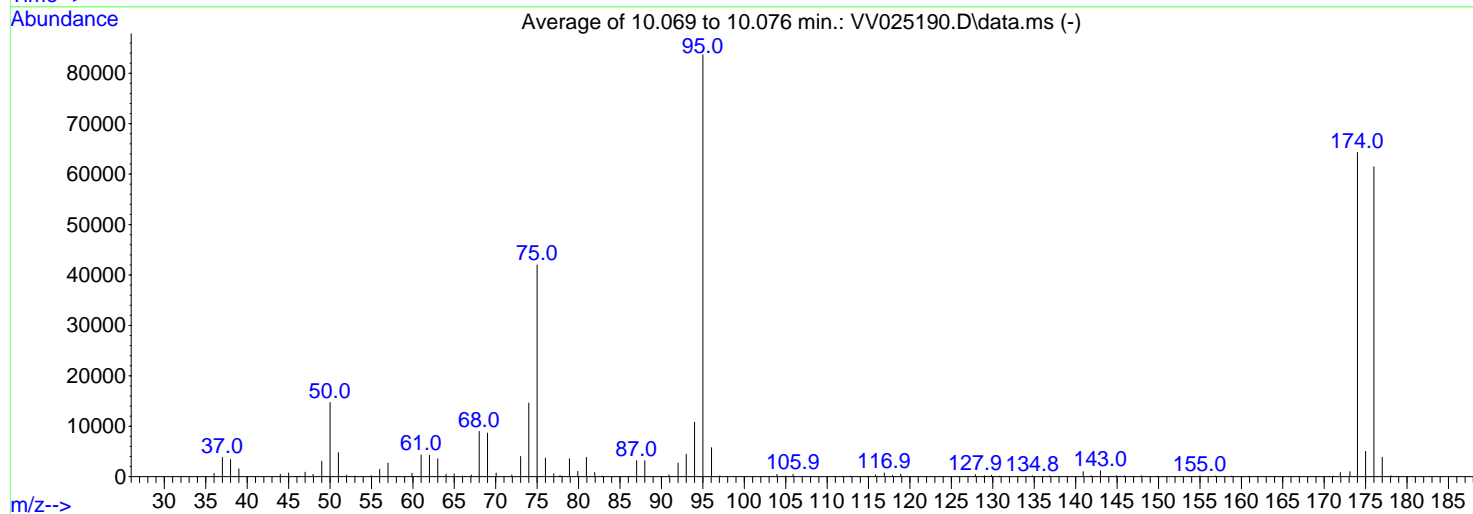
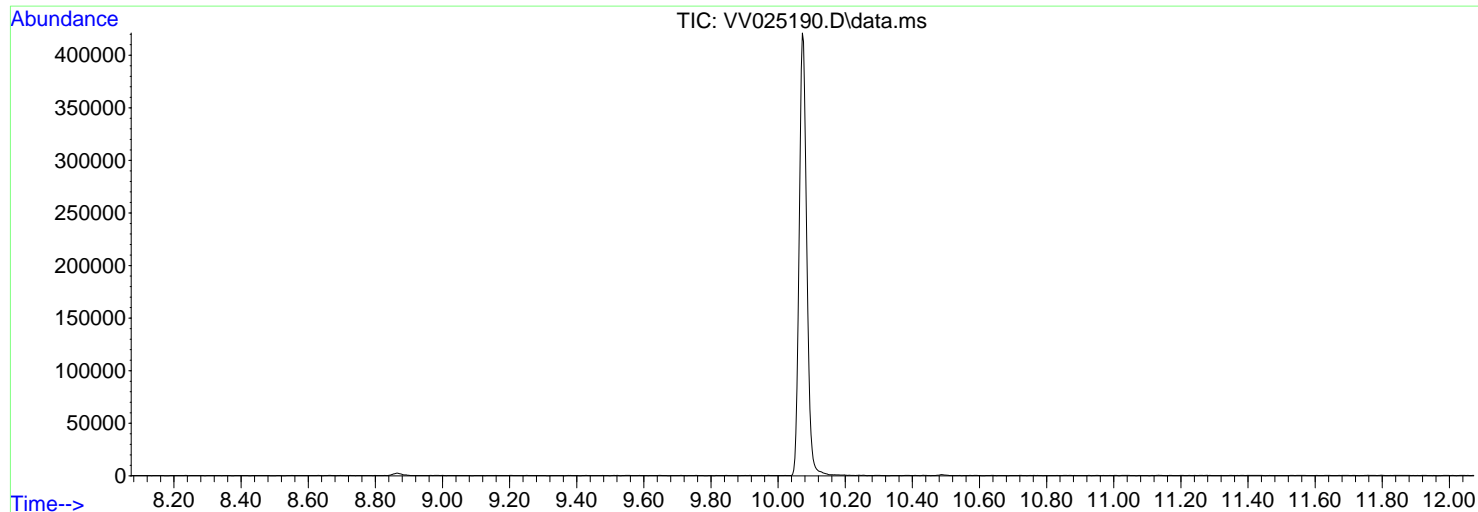


Data Path : Z:\voasrv\HPCHEM1\MSVOA_V\Data\VV032622\
 Data File : VV025190.D
 Acq On : 26 Mar 2022 10:59
 Operator : SY/MD
 Sample : BFB288
 Misc : 25mL/MSVOA_V/WATER
 ALS Vial : 1 Sample Multiplier: 1

Instrument :
 MSVOA_V
 ClientSampleId :
 BFB288

Integration File: rteint.p

Method : Z:\voasrv\HPCHEM1\MSVOA_V\Method\SFAMVTR032622WMA.M
 Title : TRACE VOA SFAM1.0
 Last Update : Tue Mar 29 04:58:30 2022



AutoFind: Scans 2808, 2809, 2810; Background Corrected with Scan 2796

Target Mass	Rel. to Mass	Lower Limit%	Upper Limit%	Rel. Abn%	Raw Abn	Result Pass/Fail
50	95	15	40	17.5	14680	PASS
75	95	30	80	50.2	41995	PASS
95	95	100	100	100.0	83664	PASS
96	95	5	9	6.9	5757	PASS
173	174	0.00	2	1.5	974	PASS
174	95	50	120	76.9	64309	PASS
175	174	5	9	7.8	5001	PASS
176	174	95	105	95.6	61491	PASS
177	176	5	10	6.3	3854	PASS

m/z	Abundance
39.90	102.0
44.00	195.0

Instrument :
MSVOA_V
ClientSampleId :
BFB288

m/z	Abundance
36.00	633.0
37.00	3813.0
38.00	3404.0
39.00	1476.0
40.00	171.0
44.00	710.0
45.00	709.0
46.30	143.0
47.00	896.0
47.90	448.0
49.00	3105.0
50.00	14258.0
51.00	4714.0
52.00	350.0
53.00	121.0
55.00	244.0
56.00	1436.0
57.00	2529.0
59.90	679.0
61.00	4136.0
62.00	4055.0
63.00	3415.0
64.00	474.0
65.00	538.0
66.00	144.0
67.00	312.0
68.00	8625.0
69.00	8405.0
70.10	627.0
72.00	346.0
73.00	3866.0
74.00	13970.0
75.00	40728.0
76.00	3573.0
77.00	536.0
77.70	314.0
78.90	3365.0
79.90	973.0
81.00	3606.0
82.00	733.0
82.90	121.0
87.00	3153.0
88.00	2954.0
90.90	331.0
92.00	2656.0
93.00	4247.0
94.00	9830.0
95.00	80120.0
96.00	5745.0
97.00	171.0
103.90	428.0
105.00	130.0
105.90	479.0
112.80	129.0
115.80	288.0
116.90	706.0
117.90	290.0
118.90	482.0
127.90	349.0
128.80	131.0
129.00	131.0
129.80	284.0
130.90	123.0
134.80	121.0
136.90	147.0
140.90	851.0
141.80	159.0
143.00	1043.0
144.90	217.0
145.90	147.0
147.90	199.0
149.80	114.0
155.00	183.0
156.90	136.0
158.80	104.0
171.10	161.0
171.90	819.0
173.10	914.0
174.00	59544.0
175.00	4781.0
176.00	57176.0
177.00	3627.0
178.00	162.0

Instrument :
MSVOA_V
ClientSampleId :
BFB288

m/z	Abundance
36.00	624.0
37.00	3974.0
38.00	3527.0
39.00	1619.0
39.90	168.0
44.00	642.0
45.00	773.0
47.00	903.0
48.00	462.0
49.00	3147.0
50.00	15188.0
51.00	4968.0
52.00	330.0
53.00	120.0
54.90	246.0
56.00	1461.0
57.00	2770.0
59.90	708.0
61.00	4526.0
62.00	4417.0
63.00	3720.0
64.00	482.0
65.00	578.0
66.00	134.0
67.10	334.0
68.00	9282.0
69.00	8938.0
70.00	745.0
71.90	353.0
73.00	4177.0
74.00	15048.0
75.00	43408.0
76.00	3907.0
77.00	605.0
77.80	322.0
78.90	3648.0
79.90	1098.0
80.90	4006.0
82.00	873.0
82.90	121.0
86.10	130.0
87.00	3200.0
88.00	3228.0
90.90	355.0
92.00	2772.0
93.00	4667.0
94.00	11175.0
95.00	86464.0
96.00	5956.0
97.10	168.0
104.00	482.0
105.00	140.0
105.90	478.0
111.80	117.0
112.80	140.0
114.90	122.0
115.90	368.0
116.90	760.0
117.90	297.0
118.90	546.0
127.90	427.0
129.00	199.0
129.90	296.0
130.80	133.0
134.80	184.0
136.80	188.0
140.90	1008.0
141.90	196.0
143.00	1228.0
144.90	230.0
145.90	179.0
147.90	221.0
149.90	117.0
155.00	195.0
156.80	136.0
158.80	147.0
160.90	131.0
170.60	106.0
171.10	187.0
171.90	840.0
173.10	1010.0
174.00	66416.0
175.00	5215.0
176.00	64024.0
177.00	4016.0
178.10	188.0

Instrument :
MSVOA_V
ClientSampleId :
BFB288

m/z	Abundance
36.00	639.0
37.00	3608.0
38.00	3313.0
39.00	1583.0
39.90	157.0
44.00	628.0
45.00	751.0
46.30	129.0
47.00	836.0
47.90	427.0
49.00	2992.0
50.00	14593.0
51.00	4644.0
52.00	274.0
53.00	114.0
54.90	218.0
56.00	1430.0
57.00	2768.0
58.10	100.0
59.90	685.0
61.00	4332.0
62.00	4244.0
63.00	3560.0
64.00	444.0
65.00	544.0
66.00	105.0
67.00	296.0
68.00	9035.0
69.00	8580.0
70.00	788.0
71.90	346.0
73.00	3968.0
74.00	14818.0
75.00	41848.0
76.00	3592.0
77.00	610.0
78.00	343.0
78.90	3608.0
79.90	1067.0
80.90	3902.0
81.90	918.0
82.80	116.0
86.10	168.0
87.00	3178.0
88.00	3320.0
90.90	361.0
92.00	2638.0
93.00	4458.0
94.00	11346.0
95.00	84408.0
96.10	5571.0
97.00	183.0
104.00	438.0
105.00	134.0
105.90	443.0
111.90	158.0
112.80	102.0
114.90	131.0
115.90	390.0
116.90	723.0
117.90	287.0
118.90	545.0
127.90	433.0
129.00	244.0
129.90	293.0
130.80	167.0
134.80	230.0
136.80	188.0
140.90	1065.0
141.90	201.0
143.00	1280.0
144.90	237.0
145.90	214.0
147.90	199.0
149.90	109.0
155.00	183.0
156.80	151.0
158.90	172.0
160.90	153.0
170.70	130.0
172.00	840.0
173.10	998.0
174.00	66968.0
175.00	5007.0
176.00	63272.0
177.00	3918.0
178.10	189.0

Instrument :
MSVOA_V
ClientSampleId :
BFB288