

Data Path : Z:\voasrv\HPCHEM1\MSVOA_V\Data\VW032822\
 Data File : VW025259.D
 Acq On : 28 Mar 2022 14:24
 Operator : SY/MD
 Sample : N2110-06DL 500X
 Misc : 25.0mL/MSVOA_V/WATER
 ALS Vial : 12 Sample Multiplier: 1

Instrument :
 MSVOA_V
 ClientSampleId :

Quant Time: Mar 29 03:29:17 2022
 Quant Method : Z:\voasrv\HPCHEM1\MSVOA_V\Method\SFAMVTR032622WMA.M
 Quant Title : TRACE VOA SFAM1.0
 QLast Update : Tue Mar 29 03:26:38 2022
 Response via : Initial Calibration

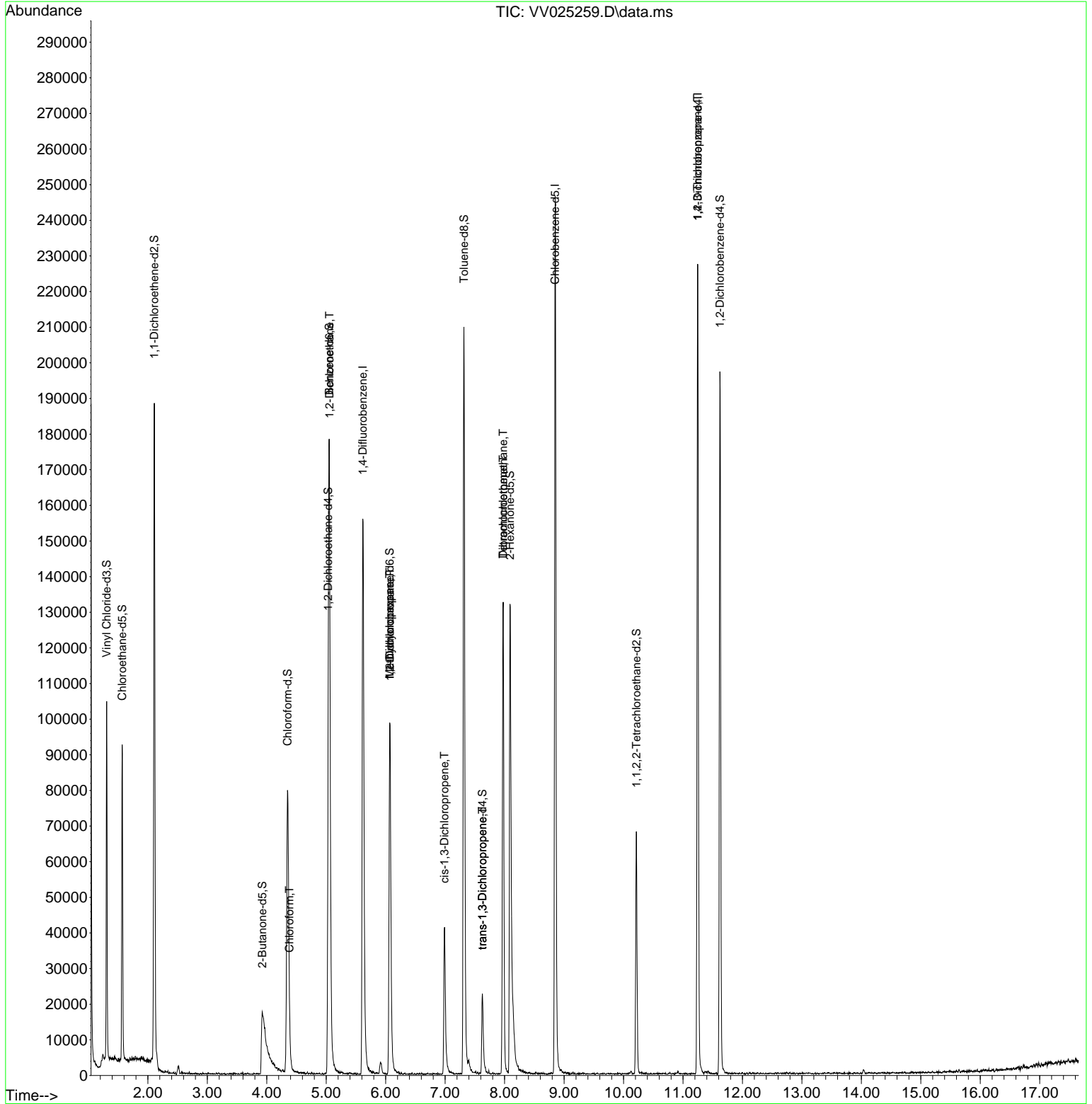
Compound	R.T.	QIon	Response	Conc	Units	Dev(Min)
Internal Standards						
1) 1,4-Difluorobenzene	5.616	114	142798	5.000	ug/L	0.00
28) Chlorobenzene-d5	8.850	117	140084	5.000	ug/L	0.00
58) 1,4-Dichlorobenzene-d4	11.249	152	60023	5.000	ug/L	0.00
System Monitoring Compounds						
4) Vinyl Chloride-d3	1.307	65	62379	4.677	ug/L	0.00
Spiked Amount	5.000	Range 40 - 130	Recovery	=	93.600%	
7) Chloroethane-d5	1.568	69	55766	4.981	ug/L	0.00
Spiked Amount	5.000	Range 65 - 130	Recovery	=	99.600%	
11) 1,1-Dichloroethene-d2	2.108	63	97609	3.378	ug/L	0.00
Spiked Amount	5.000	Range 60 - 125	Recovery	=	67.600%	
20) 2-Butanone-d5	3.924	46	49796	37.478	ug/L	0.01
Spiked Amount	50.000	Range 40 - 130	Recovery	=	74.960%	
24) Chloroform-d	4.349	84	85316	4.901	ug/L	0.00
Spiked Amount	5.000	Range 70 - 125	Recovery	=	98.000%	
26) 1,2-Dichloroethane-d4	5.034	65	38388	4.989	ug/L	0.00
Spiked Amount	5.000	Range 70 - 130	Recovery	=	99.800%	
32) Benzene-d6	5.050	84	168687	4.760	ug/L	0.00
Spiked Amount	5.000	Range 70 - 125	Recovery	=	95.200%	
36) 1,2-Dichloropropane-d6	6.069	67	49981	5.032	ug/L	0.00
Spiked Amount	5.000	Range 60 - 140	Recovery	=	100.600%	
41) Toluene-d8	7.317	98	144591	4.448	ug/L	0.00
Spiked Amount	5.000	Range 70 - 130	Recovery	=	89.000%	
43) trans-1,3-Dichloroprop...	7.625	79	14403	4.445	ug/L	0.00
Spiked Amount	5.000	Range 55 - 130	Recovery	=	89.000%	
46) 2-Hexanone-d5	8.092	63	54323	46.421	ug/L	0.00
Spiked Amount	50.000	Range 45 - 130	Recovery	=	92.840%	
56) 1,1,2,2-Tetrachloroeth...	10.217	84	32011	4.834	ug/L	0.00
Spiked Amount	5.000	Range 65 - 120	Recovery	=	96.600%	
66) 1,2-Dichlorobenzene-d4	11.622	152	50326	5.220	ug/L	0.00
Spiked Amount	5.000	Range 80 - 120	Recovery	=	104.400%	
Target Compounds						
25) Chloroform	4.381	83	2360	0.123	ug/L	90
27) 1,2-Dichloroethane	5.053	62	1069	0.108	ug/L #	73
35) Methylcyclohexane	6.069	83	12559	0.710	ug/L #	22
37) 1,2-Dichloropropane	6.072	63	5650	0.593	ug/L #	84
39) cis-1,3-Dichloropropene	6.989	75	1336	0.108	ug/L #	61
44) trans-1,3-Dichloropropene	7.625	75	821	0.085	ug/L	89
47) Tetrachloroethene	7.976	164	29591	3.557	ug/L	97
49) Dibromochloromethane	7.976	129	27709	3.946	ug/L #	12
61) 1,2,3-Trichloropropane	11.246	75	7626	1.679	ug/L #	67

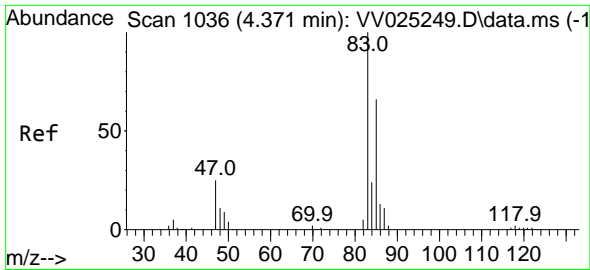
(#) = qualifier out of range (m) = manual integration (+) = signals summed

Data Path : Z:\voasrv\HPCHEM1\MSVOA_V\Data\VV032822\
 Data File : VV025259.D
 Acq On : 28 Mar 2022 14:24
 Operator : SY/MD
 Sample : N2110-06DL 500X
 Misc : 25.0mL/MSVOA_V/WATER
 ALS Vial : 12 Sample Multiplier: 1

Instrument :
 MSVOA_V
 ClientSampleId :

Quant Time: Mar 29 03:29:17 2022
 Quant Method : Z:\voasrv\HPCHEM1\MSVOA_V\Method\SFAMVTR032622WMA.M
 Quant Title : TRACE VOA SFAM1.0
 QLast Update : Tue Mar 29 03:26:38 2022
 Response via : Initial Calibration

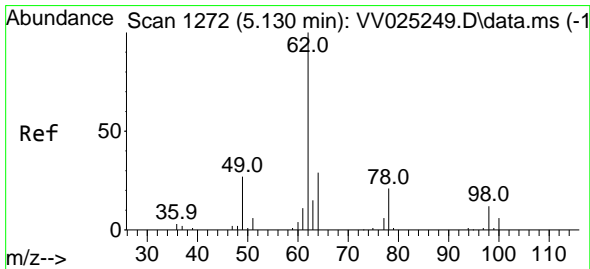
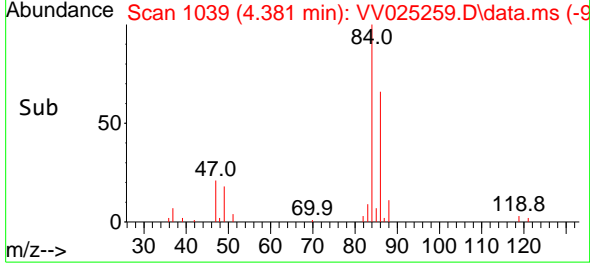
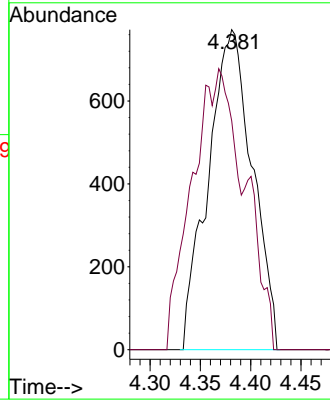
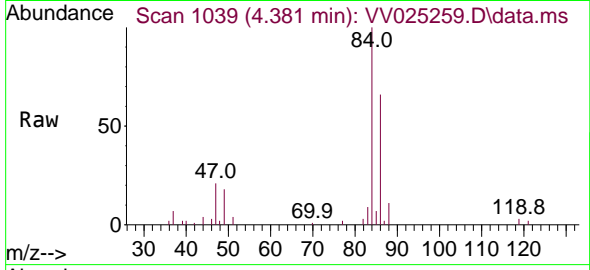




#25
 Chloroform
 Concen: 0.123 ug/L
 RT: 4.381 min Scan# 1039
 Delta R.T. 0.010 min
 Lab File: VV025259.D
 Acq: 28 Mar 2022 14:24

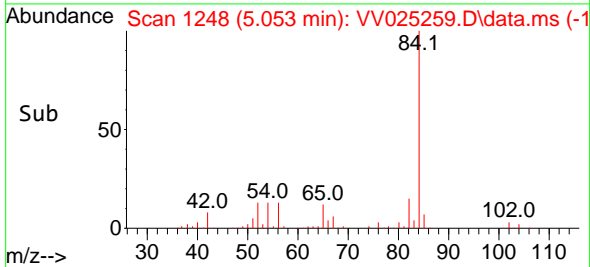
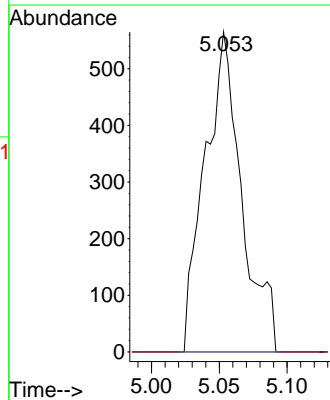
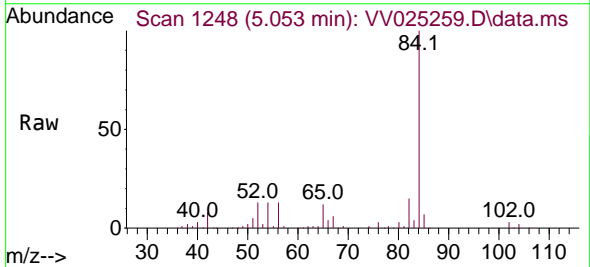
Instrument : MSVOA_V
 ClientSampleId :

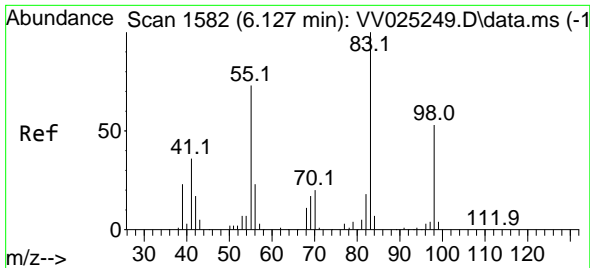
Tgt Ion: 83 Resp: 2360
 Ion Ratio Lower Upper
 83 100
 85 71.5 44.7 82.9



#27
 1,2-Dichloroethane
 Concen: 0.108 ug/L
 RT: 5.053 min Scan# 1248
 Delta R.T. -0.077 min
 Lab File: VV025259.D
 Acq: 28 Mar 2022 14:24

Tgt Ion: 62 Resp: 1069
 Ion Ratio Lower Upper
 62 100
 98 0.0 7.9 11.9#

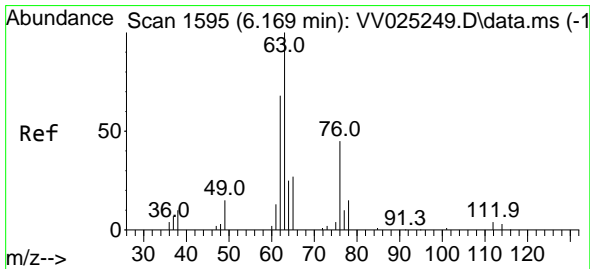
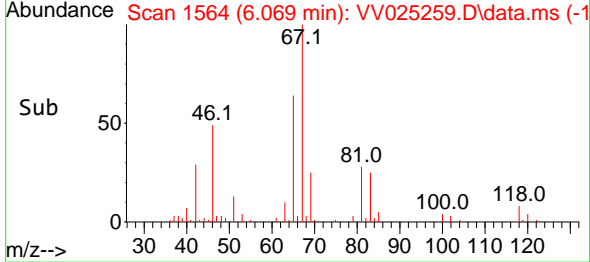
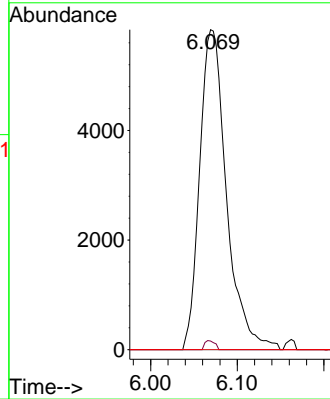
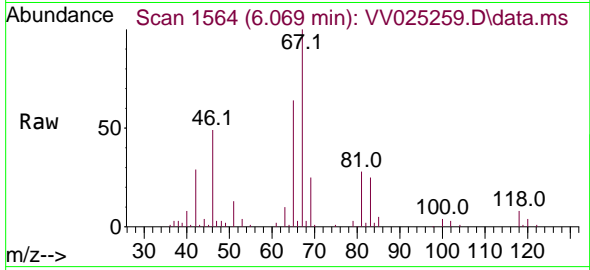




#35
 Methylcyclohexane
 Concen: 0.710 ug/L
 RT: 6.069 min Scan# 1564
 Delta R.T. -0.058 min
 Lab File: VV025259.D
 Acq: 28 Mar 2022 14:24

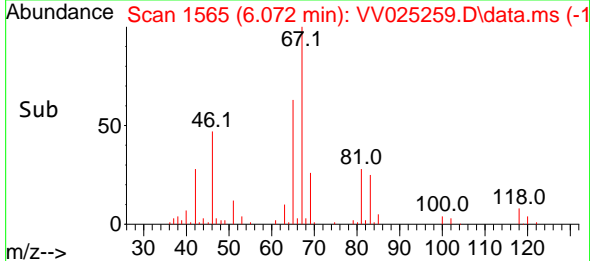
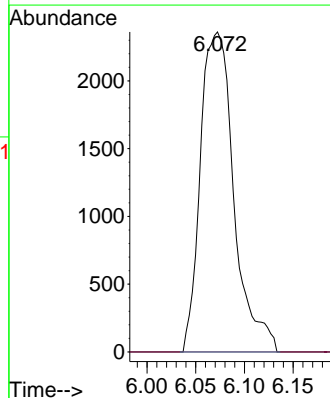
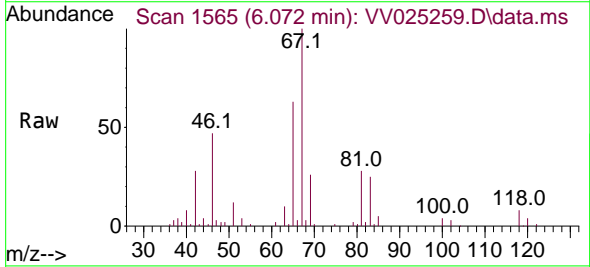
Instrument : MSVOA_V
 ClientSampleId :

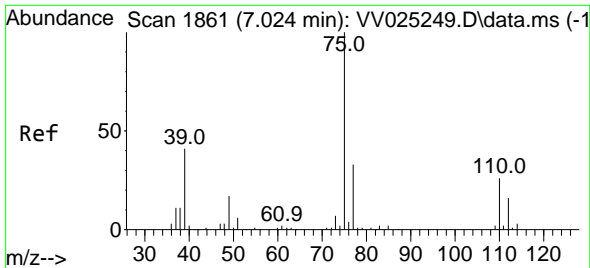
Tgt Ion	Resp	Lower	Upper
83	12559		
55	1.1	54.6	81.8#
98	0.2	39.8	59.6#



#37
 1,2-Dichloropropane
 Concen: 0.593 ug/L
 RT: 6.072 min Scan# 1565
 Delta R.T. -0.096 min
 Lab File: VV025259.D
 Acq: 28 Mar 2022 14:24

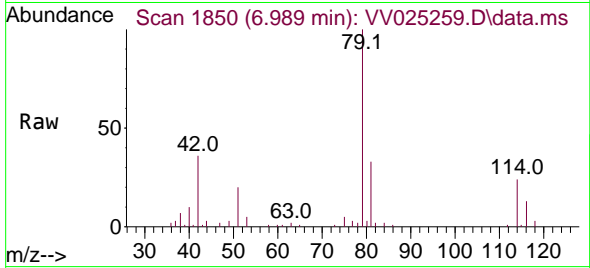
Tgt Ion	Resp	Lower	Upper
63	5650		
112	0.0	4.2	6.2#



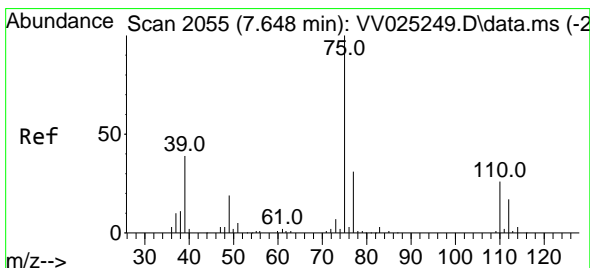
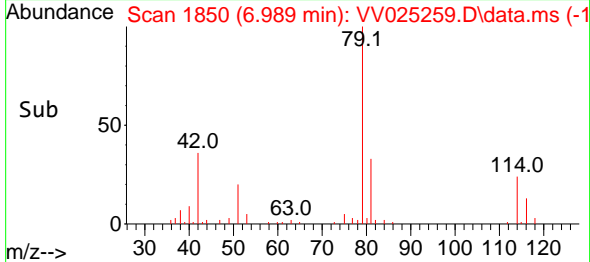
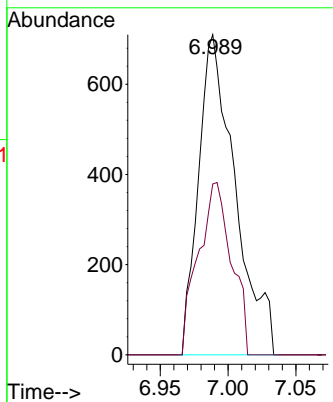


#39
 cis-1,3-Dichloropropene
 Concen: 0.108 ug/L
 RT: 6.989 min Scan# 1861
 Delta R.T. -0.035 min
 Lab File: VV025259.D
 Acq: 28 Mar 2022 14:24

Instrument : MSVOA_V
 ClientSampleId :

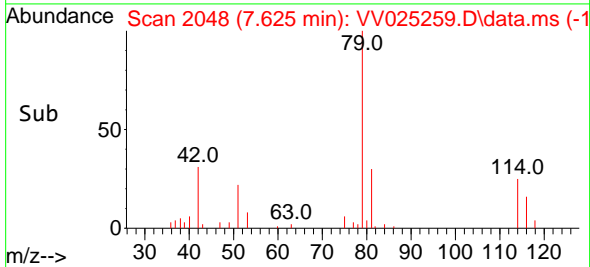
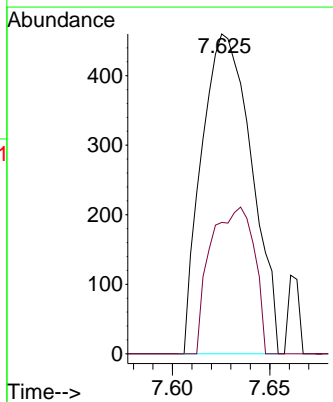
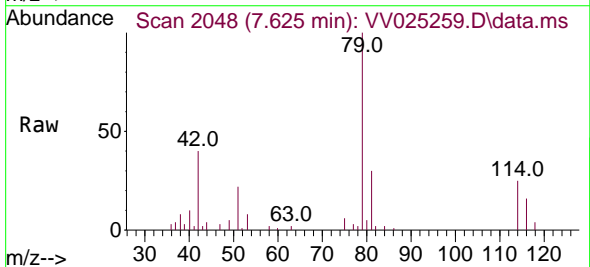


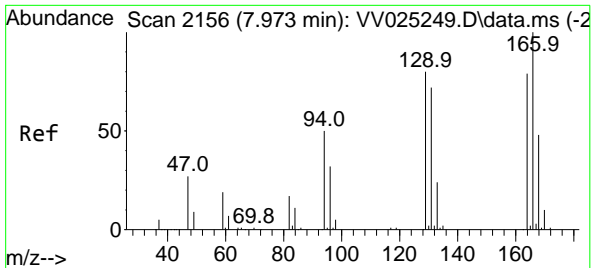
Tgt Ion: 75 Resp: 1336
 Ion Ratio Lower Upper
 75 100
 77 53.4 22.1 41.1#



#44
 trans-1,3-Dichloropropene
 Concen: 0.085 ug/L
 RT: 7.625 min Scan# 2048
 Delta R.T. -0.022 min
 Lab File: VV025259.D
 Acq: 28 Mar 2022 14:24

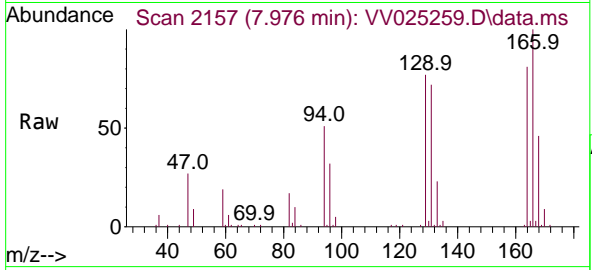
Tgt Ion: 75 Resp: 821
 Ion Ratio Lower Upper
 75 100
 77 41.1 24.2 45.0





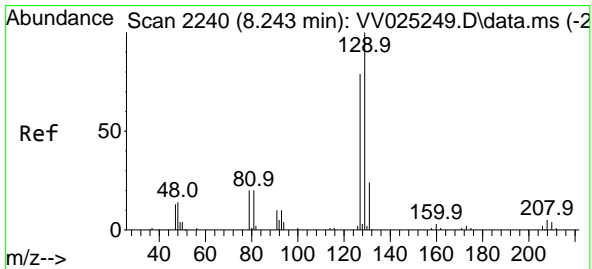
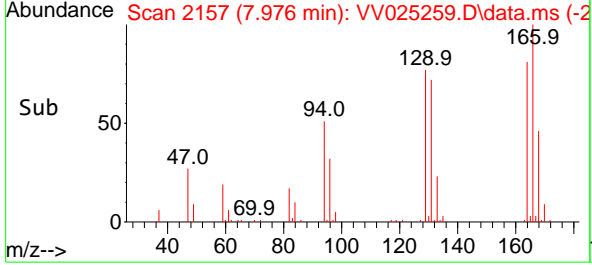
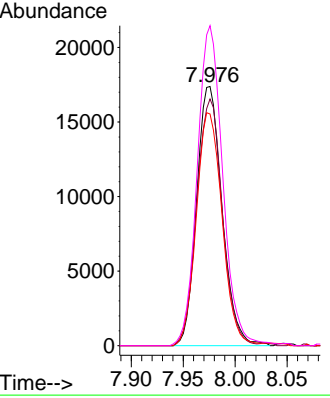
#47
 Tetrachloroethene
 Concen: 3.557 ug/L
 RT: 7.976 min Scan# 2157
 Delta R.T. 0.003 min
 Lab File: VV025259.D
 Acq: 28 Mar 2022 14:24

Instrument : MSVOA_V
 ClientSampleId :



Tgt Ion:164 Resp: 29591

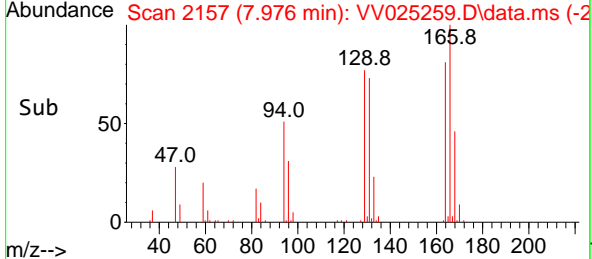
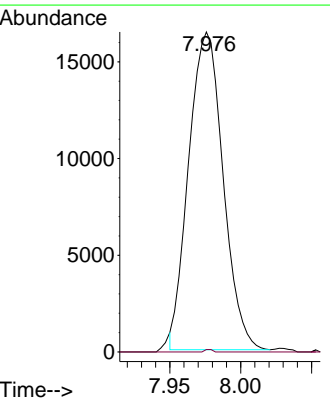
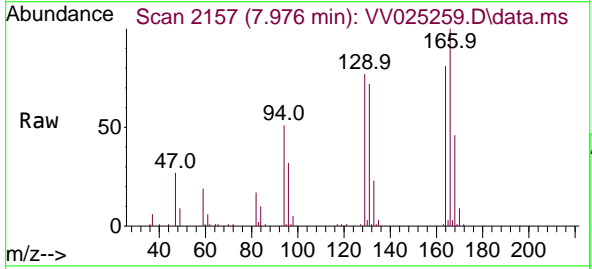
Ion	Ratio	Lower	Upper
164	100		
129	95.2	67.5	125.4
131	89.4	68.0	126.4
166	123.5	86.2	160.2

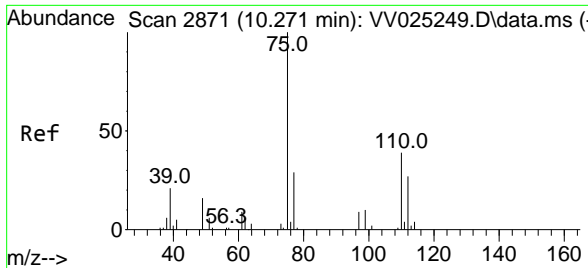


#49
 Dibromochloromethane
 Concen: 3.946 ug/L
 RT: 7.976 min Scan# 2157
 Delta R.T. -0.267 min
 Lab File: VV025259.D
 Acq: 28 Mar 2022 14:24

Tgt Ion:129 Resp: 27709

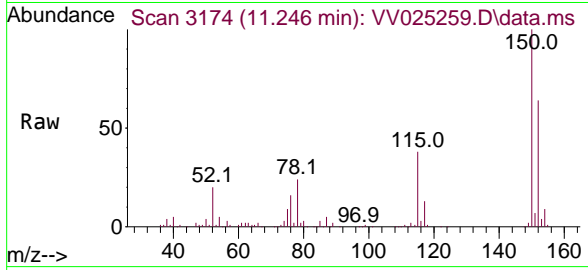
Ion	Ratio	Lower	Upper
129	100		
127	0.7	54.1	100.5#





#61
 1,2,3-Trichloropropane
 Concen: 1.679 ug/L
 RT: 11.246 min Scan# 31
 Delta R.T. 0.974 min
 Lab File: VV025259.D
 Acq: 28 Mar 2022 14:24

Instrument :
 MSVOA_V
 ClientSampleId :



Tgt Ion: 75 Resp: 7626

Ion	Ratio	Lower	Upper
75	100		
77	30.6	25.8	38.6
110	3.7	31.6	47.4#

