

Data Path : Z:\voasrv\HPCHEM1\MSVOA_V\Data\VW032922\
 Data File : VW025296.D
 Acq On : 29 Mar 2022 16:27
 Operator : SY/MD
 Sample : N2165-02
 Misc : 25mL/MSVOA_V/WATER
 ALS Vial : 10 Sample Multiplier: 1

Instrument :
 MSVOA_V
 ClientSampleId :

Quant Time: Mar 30 02:06:47 2022
 Quant Method : Z:\voasrv\HPCHEM1\MSVOA_V\Method\SFAMVTR032622WMA.M
 Quant Title : TRACE VOA SFAM1.0
 QLast Update : Wed Mar 30 02:04:47 2022
 Response via : Initial Calibration

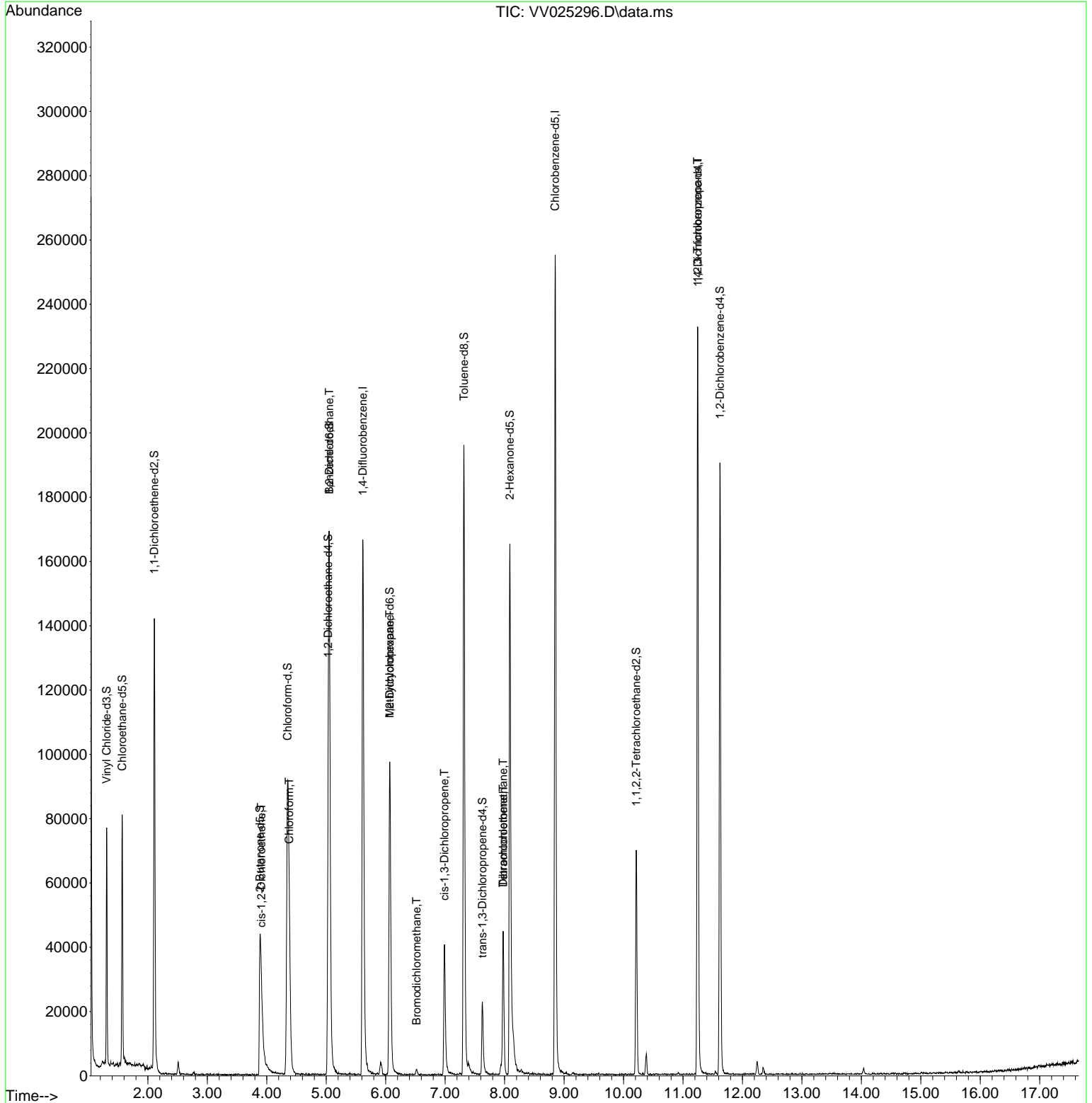
Compound	R.T.	QIon	Response	Conc	Units	Dev(Min)
Internal Standards						
1) 1,4-Difluorobenzene	5.616	114	148511	5.000	ug/L	0.00
28) Chlorobenzene-d5	8.850	117	144948	5.000	ug/L	0.00
58) 1,4-Dichlorobenzene-d4	11.249	152	60270	5.000	ug/L	0.00
System Monitoring Compounds						
4) Vinyl Chloride-d3	1.307	65	45562	3.284	ug/L	0.00
Spiked Amount	5.000	Range 40 - 130	Recovery	=	65.600%	
7) Chloroethane-d5	1.568	69	48447	4.161	ug/L	0.00
Spiked Amount	5.000	Range 65 - 130	Recovery	=	83.200%	
11) 1,1-Dichloroethene-d2	2.108	63	74516	2.480	ug/L	0.00
Spiked Amount	5.000	Range 60 - 125	Recovery	=	49.600%#	
20) 2-Butanone-d5	3.886	46	75912	54.936	ug/L	-0.02
Spiked Amount	50.000	Range 40 - 130	Recovery	=	109.880%	
24) Chloroform-d	4.349	84	84917	4.691	ug/L	0.00
Spiked Amount	5.000	Range 70 - 125	Recovery	=	93.800%	
26) 1,2-Dichloroethane-d4	5.034	65	39637	4.953	ug/L	0.00
Spiked Amount	5.000	Range 70 - 130	Recovery	=	99.000%	
32) Benzene-d6	5.050	84	158928	4.334	ug/L	0.00
Spiked Amount	5.000	Range 70 - 125	Recovery	=	86.600%	
36) 1,2-Dichloropropane-d6	6.069	67	48187	4.689	ug/L	0.00
Spiked Amount	5.000	Range 60 - 140	Recovery	=	93.800%	
41) Toluene-d8	7.317	98	130848	3.890	ug/L	0.00
Spiked Amount	5.000	Range 70 - 130	Recovery	=	77.800%	
43) trans-1,3-Dichloroprop...	7.625	79	13840	4.128	ug/L	0.00
Spiked Amount	5.000	Range 55 - 130	Recovery	=	82.600%	
46) 2-Hexanone-d5	8.088	63	59206	48.896	ug/L	0.00
Spiked Amount	50.000	Range 45 - 130	Recovery	=	97.800%	
56) 1,1,2,2-Tetrachloroeth...	10.214	84	33596	4.903	ug/L	0.00
Spiked Amount	5.000	Range 65 - 120	Recovery	=	98.000%	
66) 1,2-Dichlorobenzene-d4	11.622	152	49314	5.094	ug/L	0.00
Spiked Amount	5.000	Range 80 - 120	Recovery	=	101.800%	
Target Compounds						
22) cis-1,2-Dichloroethene	3.908	96	1359	0.125	ug/L	93
25) Chloroform	4.378	83	41930	2.109	ug/L	99
27) 1,2-Dichloroethane	5.050	62	987	0.096	ug/L #	73
35) Methylcyclohexane	6.069	83	11914	0.651	ug/L #	21
38) Bromodichloromethane	6.519	83	1210	0.097	ug/L #	80
39) cis-1,3-Dichloropropene	6.989	75	1147	0.090	ug/L #	74
47) Tetrachloroethene	7.976	164	9718	1.129	ug/L	93
49) Dibromochloromethane	7.976	129	9697	1.334	ug/L #	11
61) 1,2,3-Trichloropropane	11.246	75	7592	1.665	ug/L #	66

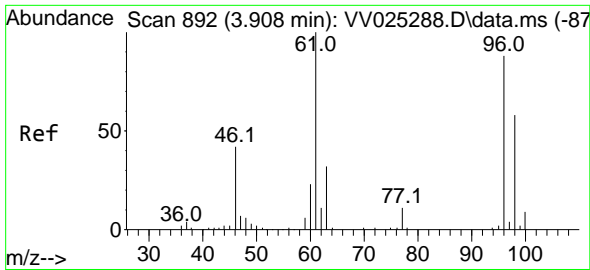
(#) = qualifier out of range (m) = manual integration (+) = signals summed

Data Path : Z:\voasrv\HPCHEM1\MSVOA_V\Data\VV032922\
 Data File : VV025296.D
 Acq On : 29 Mar 2022 16:27
 Operator : SY/MD
 Sample : N2165-02
 Misc : 25mL/MSVOA_V/WATER
 ALS Vial : 10 Sample Multiplier: 1

Instrument :
 MSVOA_V
 ClientSampleId :

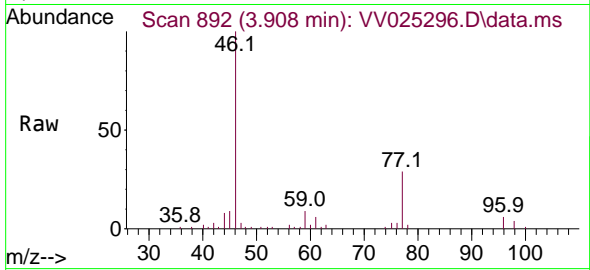
Quant Time: Mar 30 02:06:47 2022
 Quant Method : Z:\voasrv\HPCHEM1\MSVOA_V\Method\SFAMVTR032622WMA.M
 Quant Title : TRACE VOA SFAM1.0
 QLast Update : Wed Mar 30 02:04:47 2022
 Response via : Initial Calibration





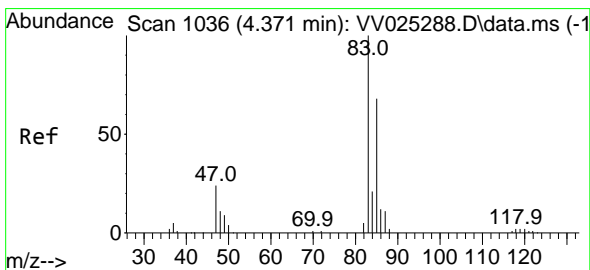
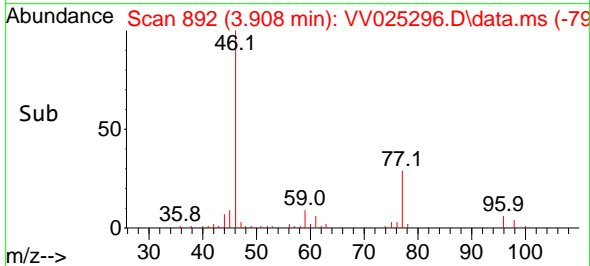
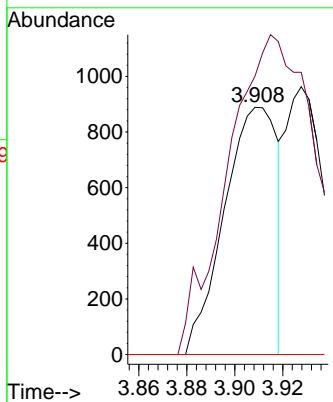
#22
 cis-1,2-Dichloroethene
 Concen: 0.125 ug/L
 RT: 3.908 min Scan# 892
 Delta R.T. 0.000 min
 Lab File: VV025296.D
 Acq: 29 Mar 2022 16:27

Instrument : MSVOA_V
 ClientSampleId :



Tgt Ion: 96 Resp: 1359

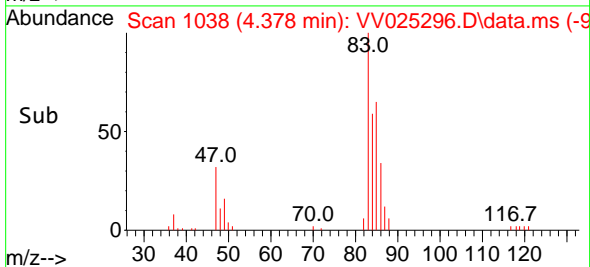
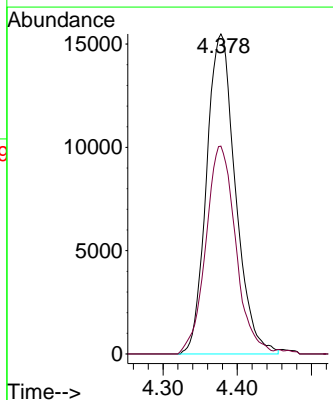
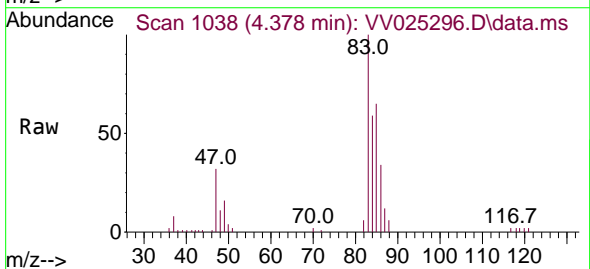
Ion	Ratio	Lower	Upper
96	100		
61	112.6	84.1	156.1
68	0.0	0.0	0.0

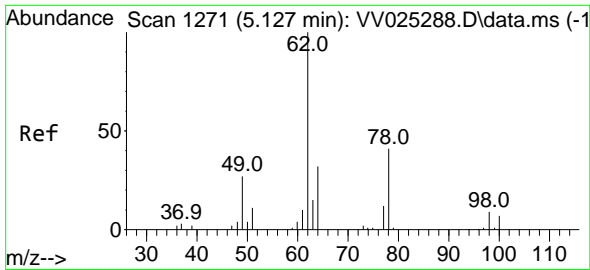


#25
 Chloroform
 Concen: 2.109 ug/L
 RT: 4.378 min Scan# 1038
 Delta R.T. 0.006 min
 Lab File: VV025296.D
 Acq: 29 Mar 2022 16:27

Tgt Ion: 83 Resp: 41930

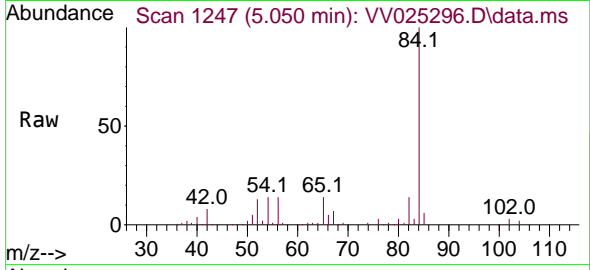
Ion	Ratio	Lower	Upper
83	100		
85	65.0	44.7	82.9



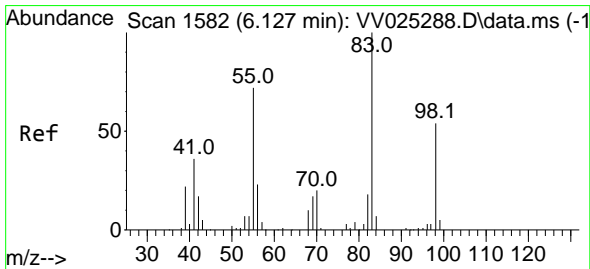
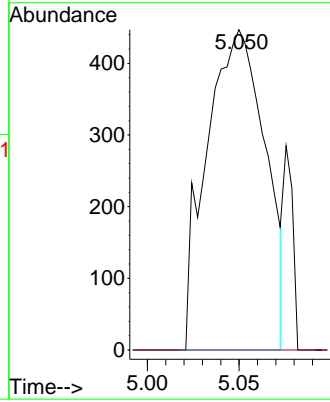
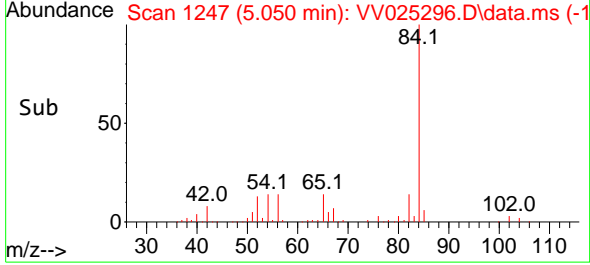


#27
 1,2-Dichloroethane
 Concen: 0.096 ug/L
 RT: 5.050 min Scan# 11
 Delta R.T. -0.077 min
 Lab File: VV025296.D
 Acq: 29 Mar 2022 16:27

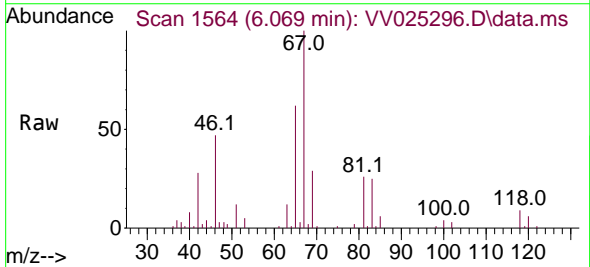
Instrument :
 MSVOA_V
 ClientSampleId :



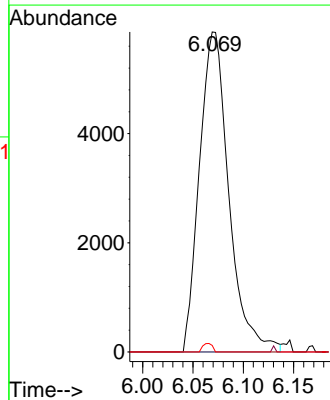
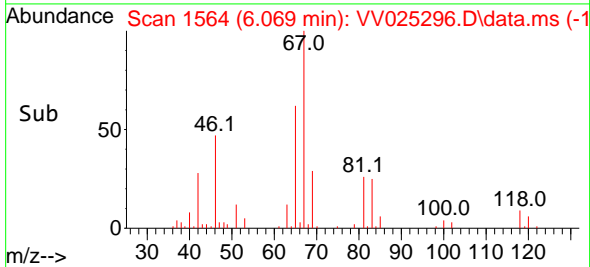
Tgt Ion: 62 Resp: 987
 Ion Ratio Lower Upper
 62 100
 98 0.0 7.9 11.9#

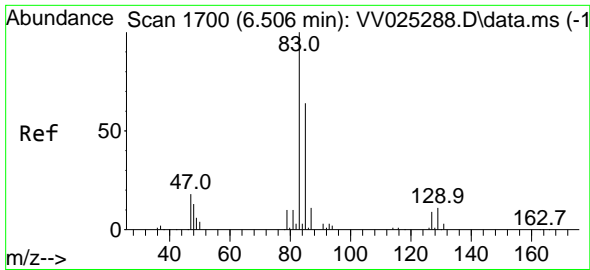


#35
 Methylcyclohexane
 Concen: 0.651 ug/L
 RT: 6.069 min Scan# 1564
 Delta R.T. -0.058 min
 Lab File: VV025296.D
 Acq: 29 Mar 2022 16:27



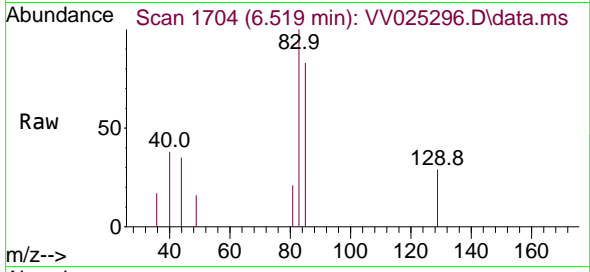
Tgt Ion: 83 Resp: 11914
 Ion Ratio Lower Upper
 83 100
 55 0.2 54.6 81.8#
 98 0.9 39.8 59.6#



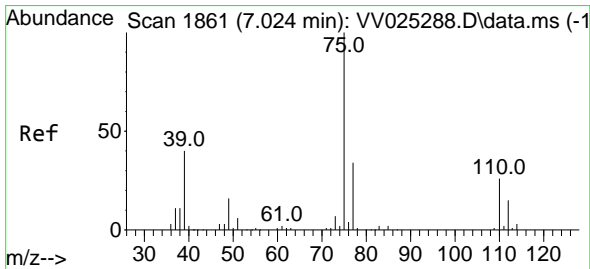
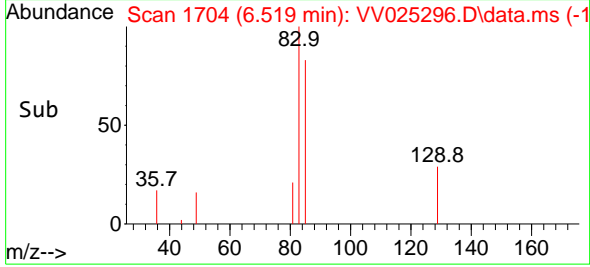
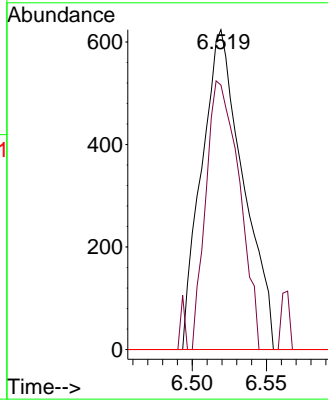


#38
 Bromodichloromethane
 Concen: 0.097 ug/L
 RT: 6.519 min Scan# 11
 Delta R.T. 0.013 min
 Lab File: VV025296.D
 Acq: 29 Mar 2022 16:27

Instrument :
 MSVOA_V
 ClientSampleId :

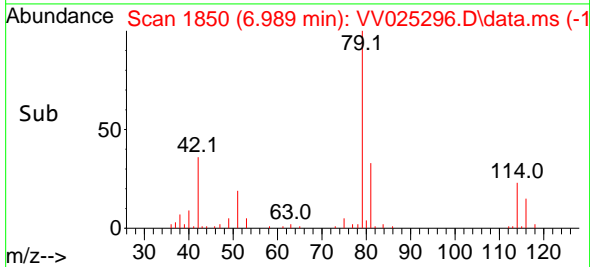
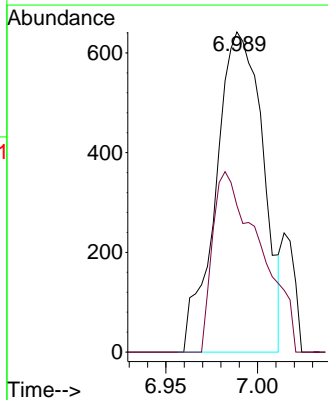
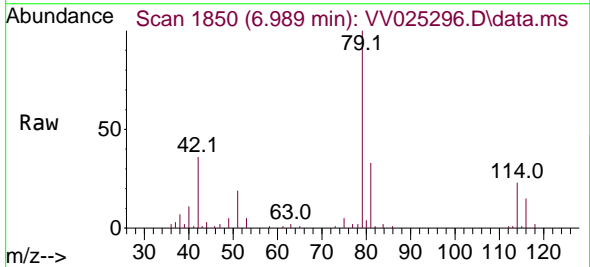


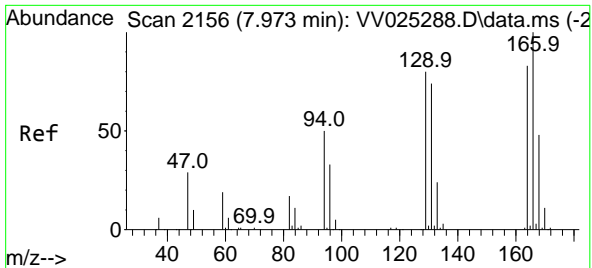
Tgt Ion: 83 Resp: 1210
 Ion Ratio Lower Upper
 83 100
 85 82.7 47.2 87.6
 127 0.0 7.2 10.8#



#39
 cis-1,3-Dichloropropene
 Concen: 0.090 ug/L
 RT: 6.989 min Scan# 1850
 Delta R.T. -0.035 min
 Lab File: VV025296.D
 Acq: 29 Mar 2022 16:27

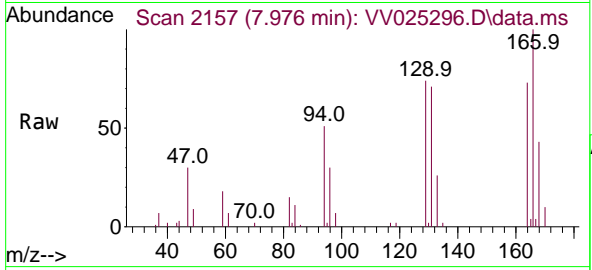
Tgt Ion: 75 Resp: 1147
 Ion Ratio Lower Upper
 75 100
 77 45.8 22.1 41.1#





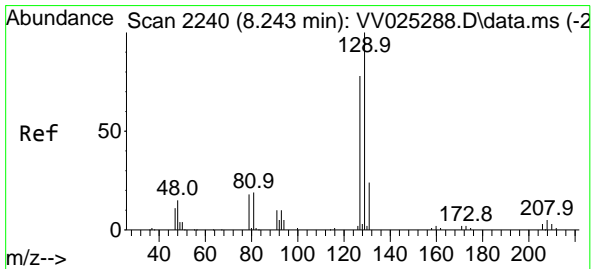
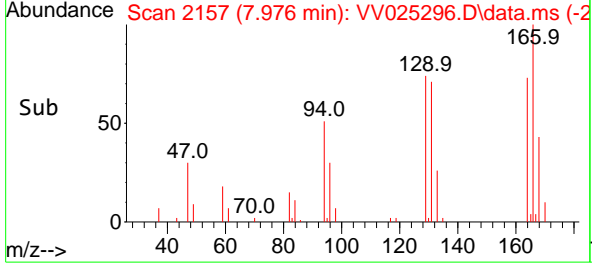
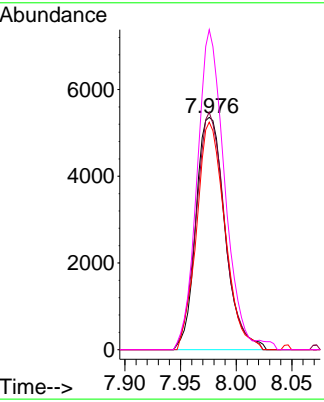
#47
 Tetrachloroethene
 Concen: 1.129 ug/L
 RT: 7.976 min Scan# 2157
 Delta R.T. 0.003 min
 Lab File: VV025296.D
 Acq: 29 Mar 2022 16:27

Instrument : MSVOA_V
 ClientSampleId :



Tgt Ion:164 Resp: 9718

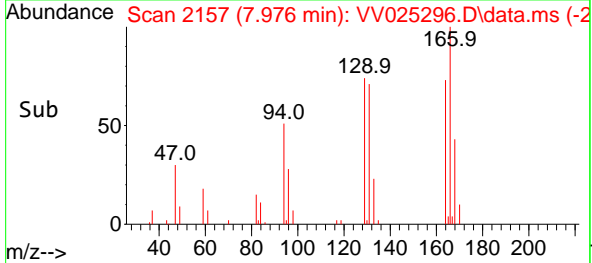
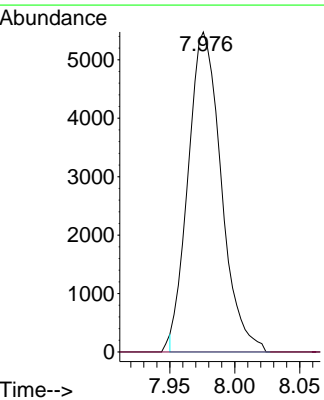
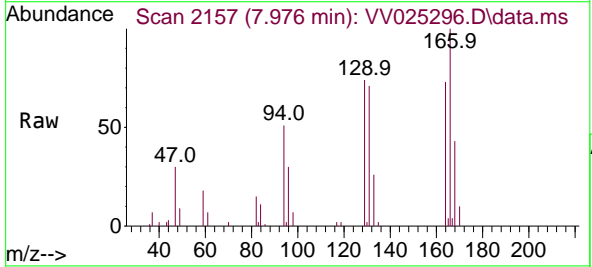
Ion	Ratio	Lower	Upper
164	100		
129	102.2	67.5	125.4
131	98.0	68.0	126.4
166	137.8	86.2	160.2

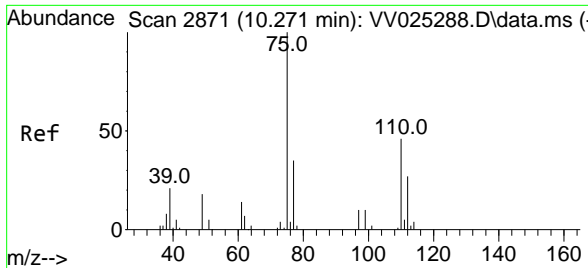


#49
 Dibromochloromethane
 Concen: 1.334 ug/L
 RT: 7.976 min Scan# 2157
 Delta R.T. -0.267 min
 Lab File: VV025296.D
 Acq: 29 Mar 2022 16:27

Tgt Ion:129 Resp: 9697

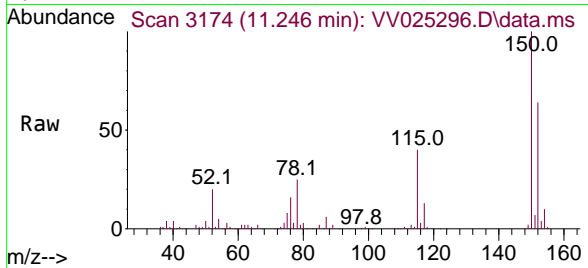
Ion	Ratio	Lower	Upper
129	100		
127	0.0	54.1	100.5#





#61
 1,2,3-Trichloropropane
 Concen: 1.665 ug/L
 RT: 11.246 min Scan# 31
 Delta R.T. 0.974 min
 Lab File: VV025296.D
 Acq: 29 Mar 2022 16:27

Instrument :
 MSVOA_V
 ClientSampleId :



Tgt Ion: 75 Resp: 7592

Ion	Ratio	Lower	Upper
75	100		
77	33.4	25.8	38.6
110	2.6	31.6	47.4#

