

Data Path : Z:\voasrv\HPCHEM1\MSVOA_V\Data\VW032924\
 Data File : VW034906.D
 Acq On : 29 Mar 2024 15:25
 Operator : SY/MD
 Sample : P1934-02
 Misc : 5.0mL/MSVOA_V/WATER
 ALS Vial : 14 Sample Multiplier: 1

Instrument :
 MSVOA_V
 ClientSampleId :

Quant Time: Mar 30 02:14:45 2024
 Quant Method : Z:\voasrv\HPCHEM1\MSVOA_V\Method\SFAMVLM032624WMA.M
 Quant Title : VOC Analysis
 QLast Update : Fri Mar 29 00:23:40 2024
 Response via : Initial Calibration

Compound	R.T.	QIon	Response	Conc	Units	Dev(Min)

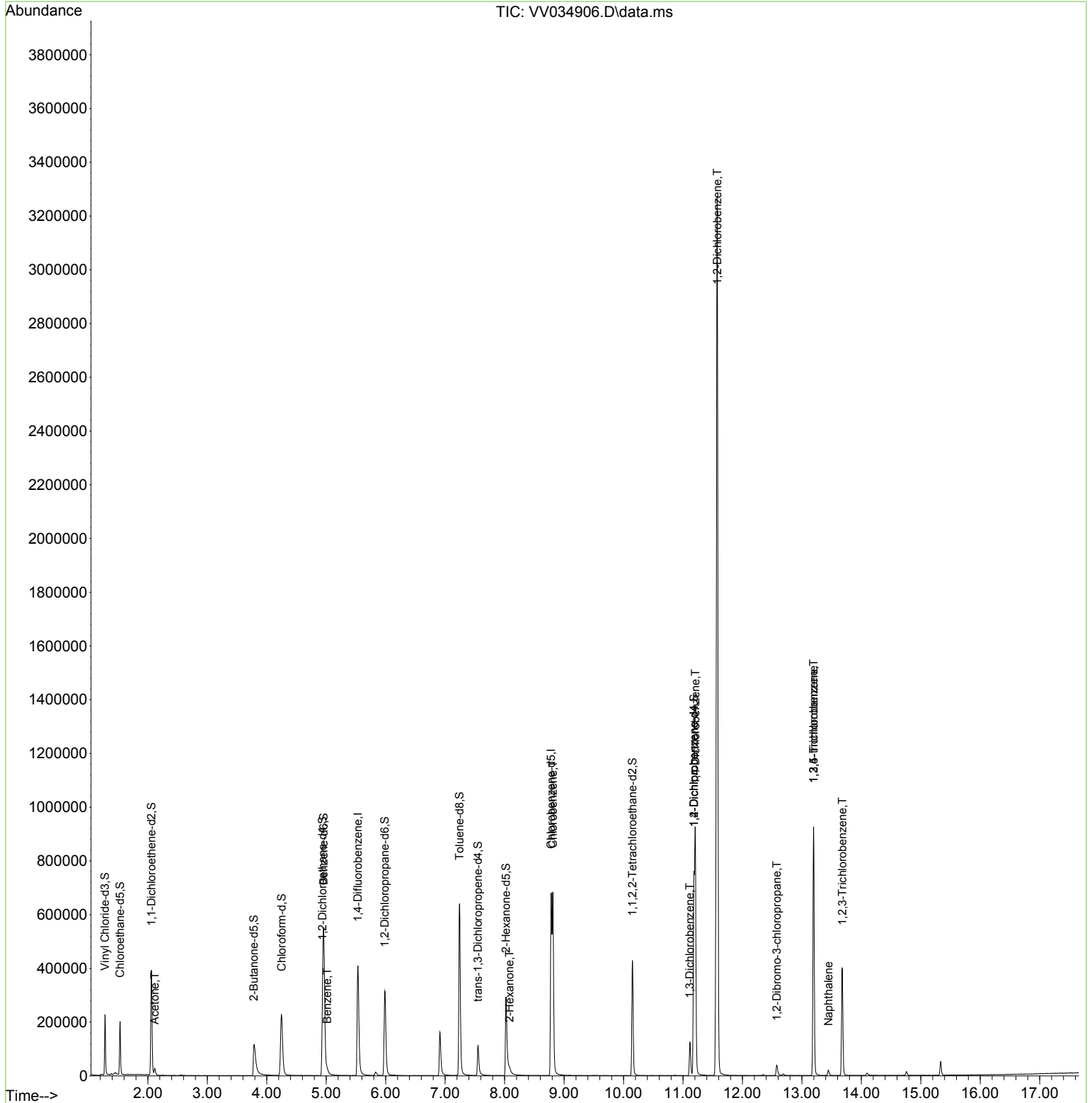
Internal Standards						
1) 1,4-Difluorobenzene	5.532	114	355518	50.000	ug/L	0.00
28) Chlorobenzene-d5	8.783	117	346099	50.000	ug/L	0.00
58) 1,4-Dichlorobenzene-d4	11.185	152	171254	50.000	ug/L	0.00
System Monitoring Compounds						
4) Vinyl Chloride-d3	1.278	65	145313	42.323	ug/L	0.00
Spiked Amount	50.000	Range 60 - 135	Recovery =	84.640%		
7) Chloroethane-d5	1.532	69	125853	42.202	ug/L	0.00
Spiked Amount	50.000	Range 70 - 130	Recovery =	84.400%		
11) 1,1-Dichloroethene-d2	2.060	65	67018	44.529	ug/L	0.00
Spiked Amount	50.000	Range 60 - 125	Recovery =	89.060%		
21) 2-Butanone-d5	3.783	46	163587	80.336	ug/L	0.00
Spiked Amount	100.000	Range 40 - 130	Recovery =	80.340%		
24) Chloroform-d	4.249	84	243236	42.136	ug/L	0.00
Spiked Amount	50.000	Range 70 - 125	Recovery =	84.280%		
26) 1,2-Dichloroethane-d4	4.937	65	155253	42.360	ug/L	0.00
Spiked Amount	50.000	Range 70 - 125	Recovery =	84.720%		
32) Benzene-d6	4.957	84	501376	43.127	ug/L	0.00
Spiked Amount	50.000	Range 70 - 125	Recovery =	86.260%		
36) 1,2-Dichloropropane-d6	5.986	67	158685	42.984	ug/L	0.00
Spiked Amount	50.000	Range 70 - 120	Recovery =	85.960%		
41) Toluene-d8	7.243	98	435900	41.634	ug/L	0.00
Spiked Amount	50.000	Range 80 - 120	Recovery =	83.260%		
43) trans-1,3-Dichloroprop...	7.551	79	68461	38.146	ug/L	0.00
Spiked Amount	50.000	Range 60 - 125	Recovery =	76.300%		
47) 2-Hexanone-d5	8.024	63	100892	72.284	ug/L	0.00
Spiked Amount	100.000	Range 45 - 130	Recovery =	72.280%		
56) 1,1,2,2-Tetrachloroeth...	10.149	84	206693	40.657	ug/L	0.00
Spiked Amount	50.000	Range 65 - 120	Recovery =	81.320%		
66) 1,2-Dichlorobenzene-d4	11.185	152	165387	43.013	ug/L	-0.37
Spiked Amount	50.000	Range 80 - 120	Recovery =	86.020%		
Target Compounds						
						Qvalue
13) Acetone	2.114	43	22100	11.821	ug/L	99
33) Benzene	5.015	78	19509	1.729	ug/L	100
48) 2-Hexanone	8.082	43	15296	4.516	ug/L #	93
51) Chlorobenzene	8.812	112	351817	45.942	ug/L	99
64) 1,3-Dichlorobenzene	11.117	146	48370	8.384	ug/L	99
65) 1,4-Dichlorobenzene	11.207	146	335394	57.164	ug/L	99
67) 1,2-Dichlorobenzene	11.577	146	1184303	206.056	ug/L	99
68) 1,2-Dibromo-3-chloropr...	12.577	75	1370	1.340	ug/L #	4
69) 1,3,5-Trichlorobenzene	13.198	180	270090	64.955	ug/L	98
70) 1,2,4-trichlorobenzene	13.198	180	270090	70.713	ug/L	99
71) Naphthalene	13.445	128	17080	1.612	ug/L	99
72) 1,2,3-Trichlorobenzene	13.680	180	117953	31.329	ug/L	100

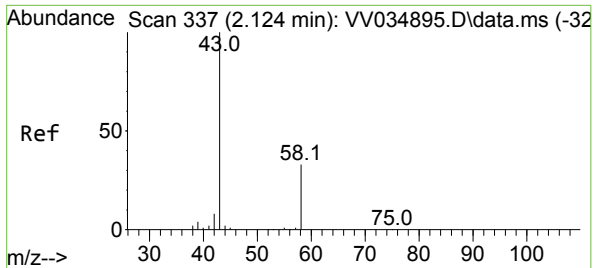
(#) = qualifier out of range (m) = manual integration (+) = signals summed

Data Path : Z:\voasrv\HPCHEM1\MSVOA_V\Data\VV032924\
 Data File : VV034906.D
 Acq On : 29 Mar 2024 15:25
 Operator : SY/MD
 Sample : P1934-02
 Misc : 5.0mL/MSVOA_V/WATER
 ALS Vial : 14 Sample Multiplier: 1

Instrument :
 MSVOA_V
 ClientSampleId :

Quant Time: Mar 30 02:14:45 2024
 Quant Method : Z:\voasrv\HPCHEM1\MSVOA_V\Method\SFAMVLM032624WMA.M
 Quant Title : VOC Analysis
 QLast Update : Fri Mar 29 00:23:40 2024
 Response via : Initial Calibration

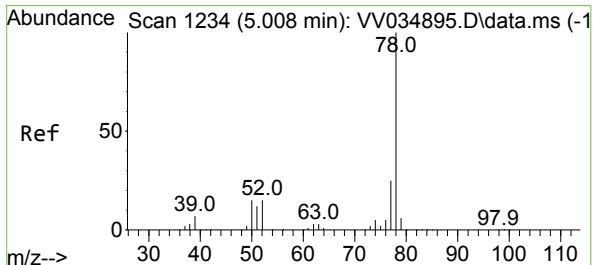
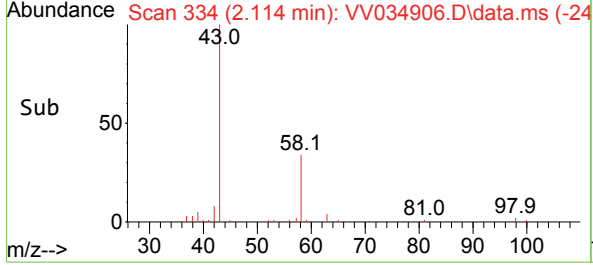
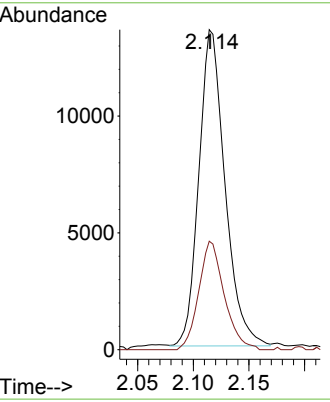
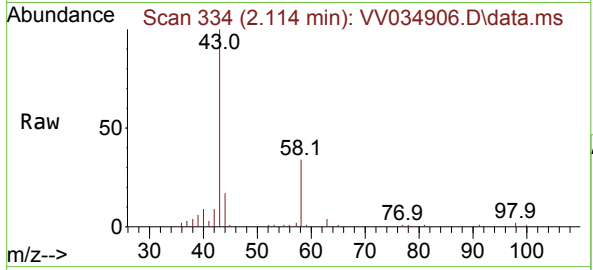




#13
 Acetone
 Concen: 11.821 ug/L
 RT: 2.114 min Scan# 31
 Delta R.T. -0.003 min
 Lab File: VV034906.D
 Acq: 29 Mar 2024 15:25

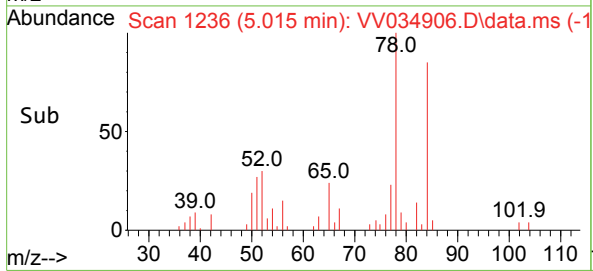
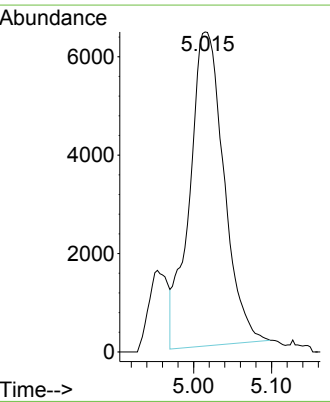
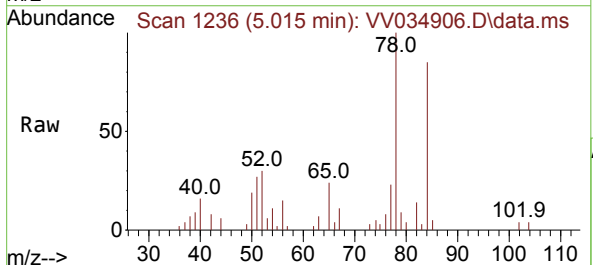
Instrument : MSVOA_V
 ClientSampleId :

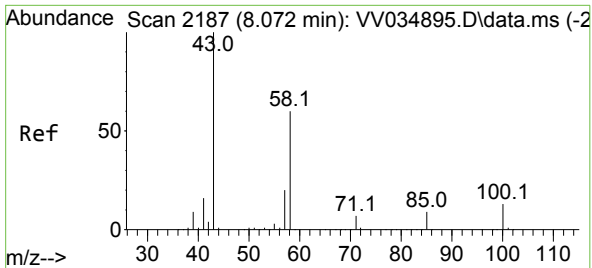
Tgt Ion: 43 Resp: 22100
 Ion Ratio Lower Upper
 43 100
 58 33.4 0.0 66.0



#33
 Benzene
 Concen: 1.729 ug/L
 RT: 5.015 min Scan# 1236
 Delta R.T. 0.007 min
 Lab File: VV034906.D
 Acq: 29 Mar 2024 15:25

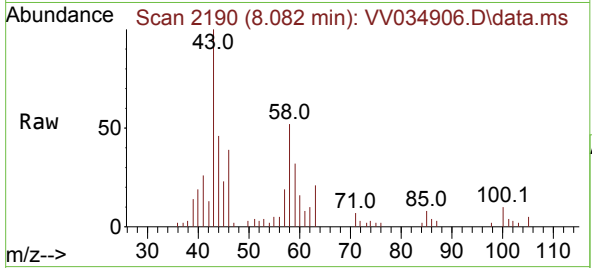
Tgt Ion: 78 Resp: 19509





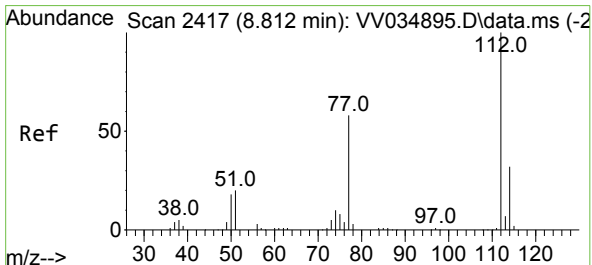
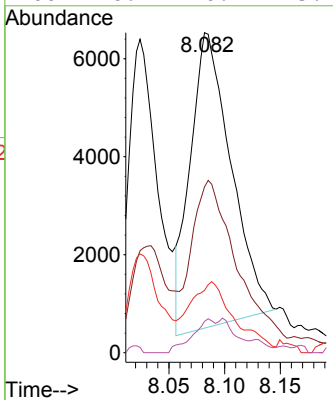
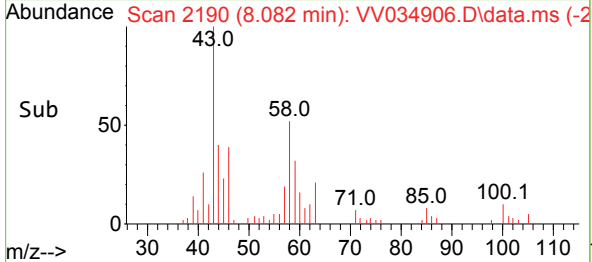
#48
 2-Hexanone
 Concen: 4.516 ug/L
 RT: 8.082 min Scan# 2187
 Delta R.T. 0.010 min
 Lab File: VV034906.D
 Acq: 29 Mar 2024 15:25

Instrument : MSVOA_V
 ClientSampleId :

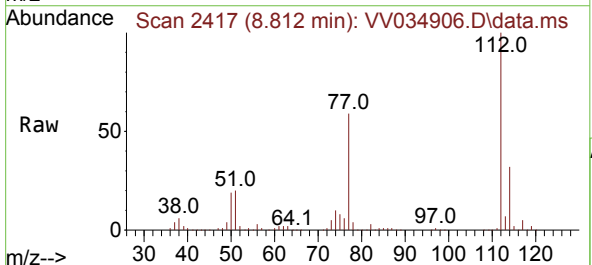


Tgt Ion: 43 Resp: 15296

Ion	Ratio	Lower	Upper
43	100		
58	59.7	45.4	68.2
57	14.9	16.2	24.4#
100	6.4	10.1	15.1#

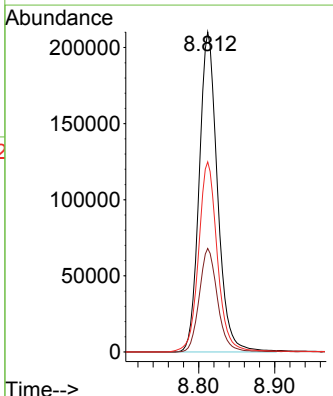
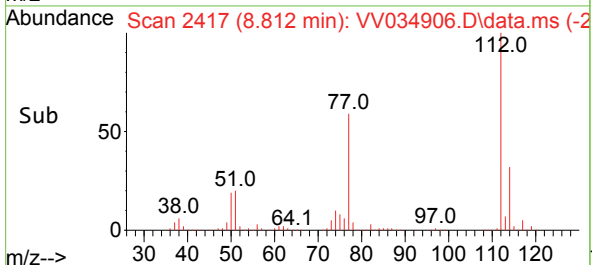


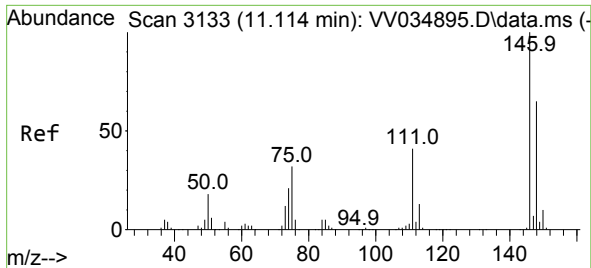
#51
 Chlorobenzene
 Concen: 45.942 ug/L
 RT: 8.812 min Scan# 2417
 Delta R.T. 0.000 min
 Lab File: VV034906.D
 Acq: 29 Mar 2024 15:25



Tgt Ion: 112 Resp: 351817

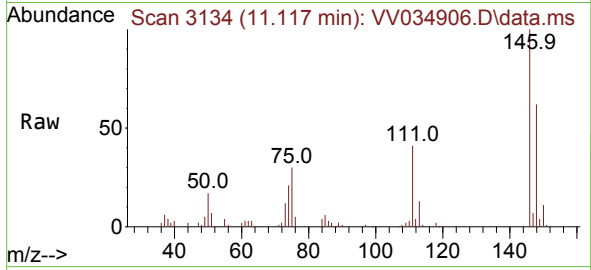
Ion	Ratio	Lower	Upper
112	100		
114	32.4	22.0	41.0
77	59.4	47.4	71.2



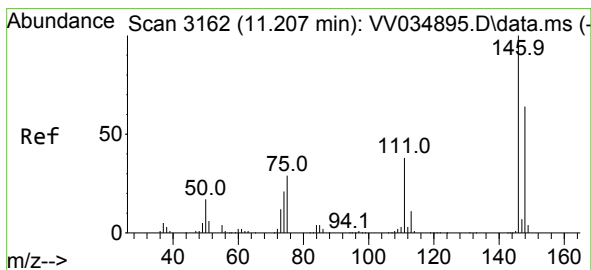
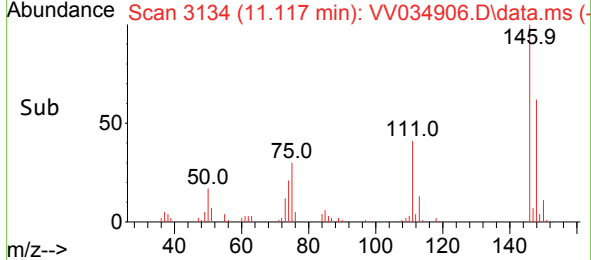
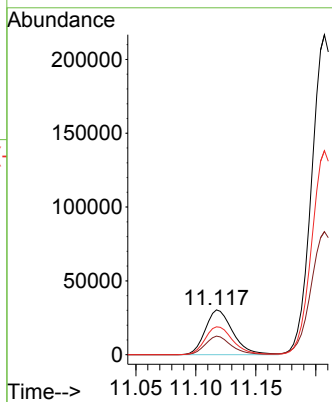


#64
 1,3-Dichlorobenzene
 Concen: 8.384 ug/L
 RT: 11.117 min Scan# 3111
 Delta R.T. 0.003 min
 Lab File: VV034906.D
 Acq: 29 Mar 2024 15:25

Instrument : MSVOA_V
 ClientSampleId :

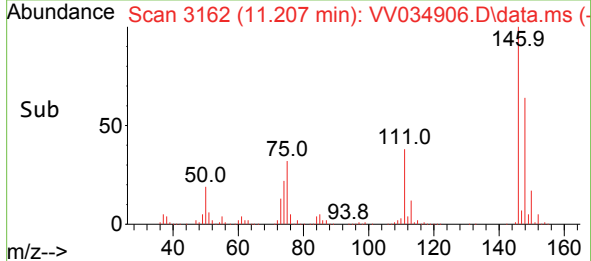
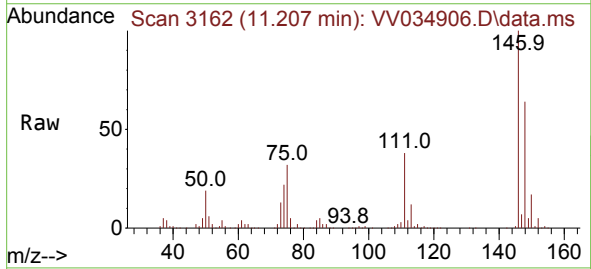
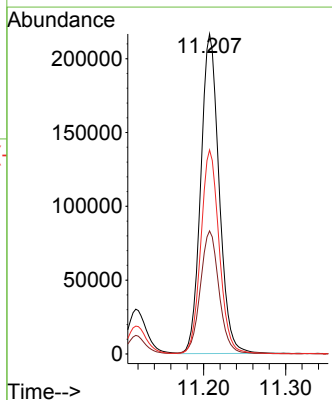


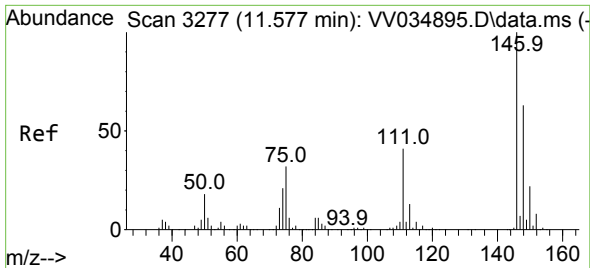
Tgt Ion:146 Resp: 48370
 Ion Ratio Lower Upper
 146 100
 111 41.3 28.7 53.3
 148 62.3 44.0 81.8



#65
 1,4-Dichlorobenzene
 Concen: 57.164 ug/L
 RT: 11.207 min Scan# 3162
 Delta R.T. 0.000 min
 Lab File: VV034906.D
 Acq: 29 Mar 2024 15:25

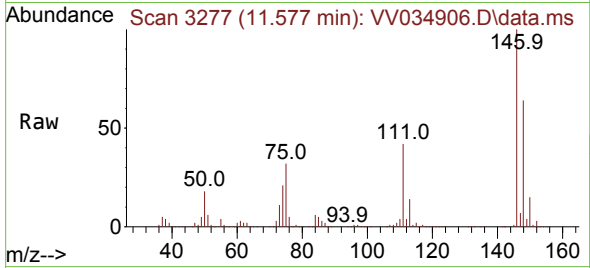
Tgt Ion:146 Resp: 335394
 Ion Ratio Lower Upper
 146 100
 111 38.4 27.4 50.8
 148 63.7 44.2 82.2



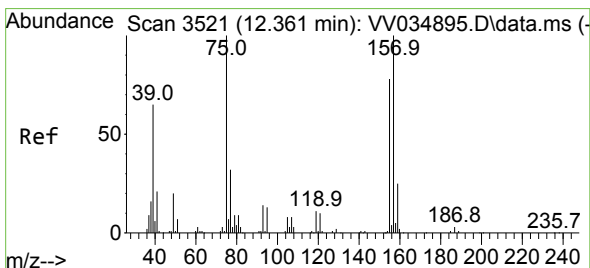
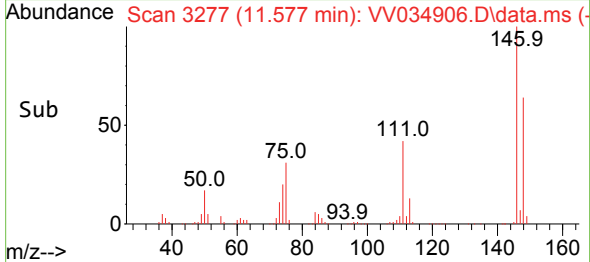
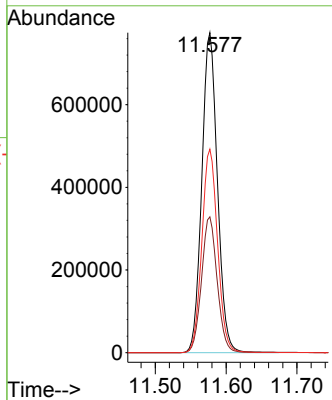


#67
 1,2-Dichlorobenzene
 Concen: 206.056 ug/L
 RT: 11.577 min Scan# 31
 Delta R.T. 0.000 min
 Lab File: VV034906.D
 Acq: 29 Mar 2024 15:25

Instrument : MSVOA_V
 ClientSampleId :

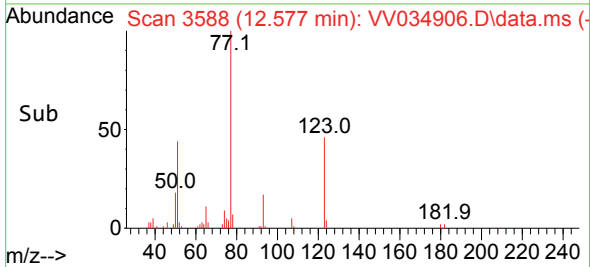
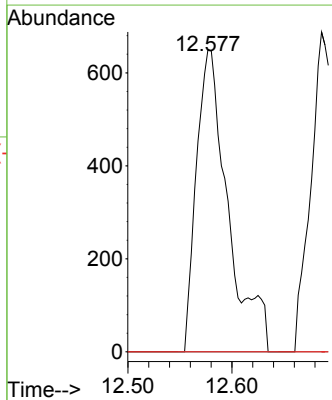
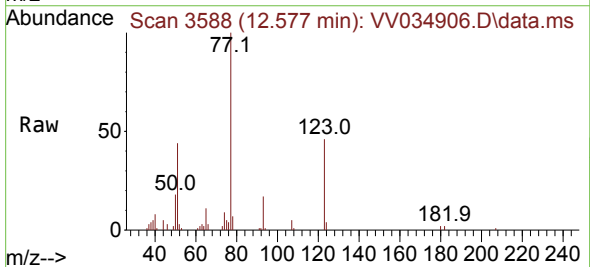


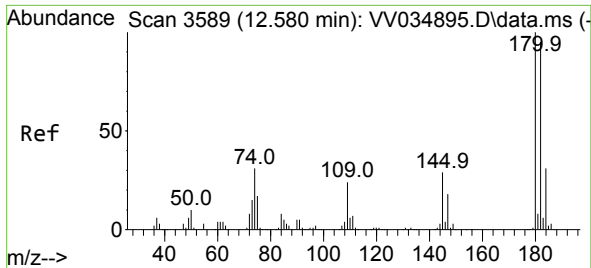
Tgt Ion:146 Resp: 1184303
 Ion Ratio Lower Upper
 146 100
 111 42.4 34.6 52.0
 148 63.6 51.5 77.3



#68
 1,2-Dibromo-3-chloropropane
 Concen: 1.340 ug/L
 RT: 12.577 min Scan# 3588
 Delta R.T. 0.216 min
 Lab File: VV034906.D
 Acq: 29 Mar 2024 15:25

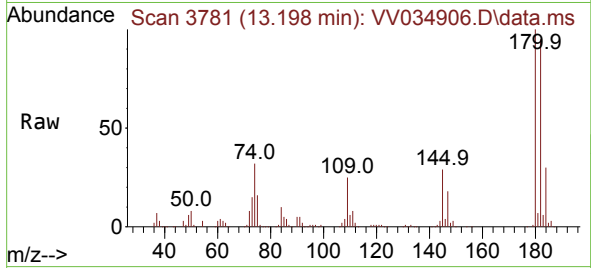
Tgt Ion: 75 Resp: 1370
 Ion Ratio Lower Upper
 75 100
 155 0.0 63.0 94.6#
 157 0.0 81.0 121.4#



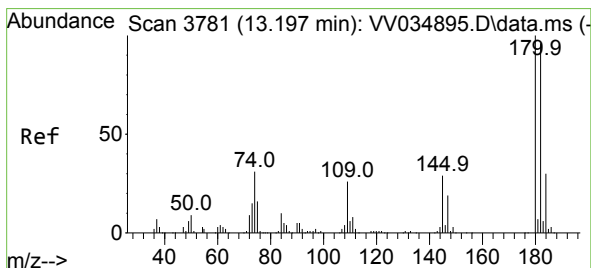
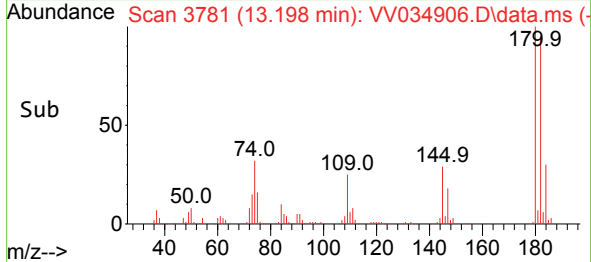
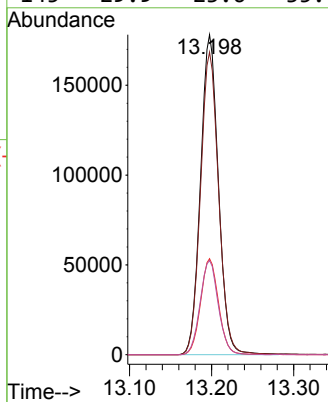


#69
 1,3,5-Trichlorobenzene
 Concen: 64.955 ug/L
 RT: 13.198 min Scan# 3781
 Delta R.T. 0.617 min
 Lab File: VV034906.D
 Acq: 29 Mar 2024 15:25

Instrument :
 MSVOA_V
 ClientSampleId :

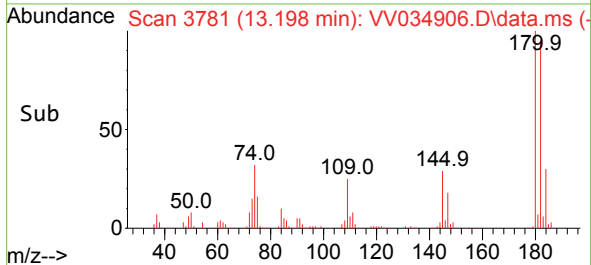
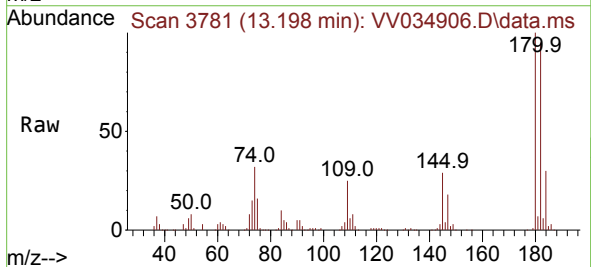
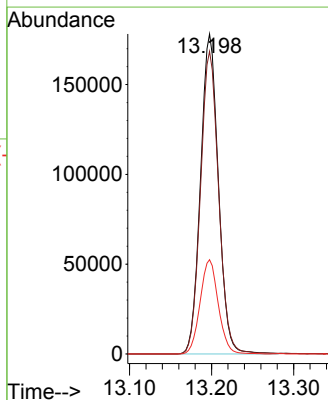


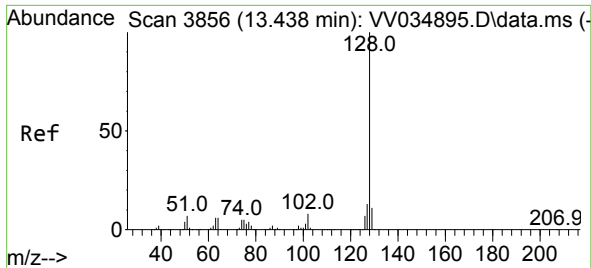
Tgt Ion:180 Resp: 270090
 Ion Ratio Lower Upper
 180 100
 182 95.8 74.7 112.1
 184 30.1 24.0 36.0
 145 29.9 23.6 35.4



#70
 1,2,4-trichlorobenzene
 Concen: 70.713 ug/L
 RT: 13.198 min Scan# 3781
 Delta R.T. 0.000 min
 Lab File: VV034906.D
 Acq: 29 Mar 2024 15:25

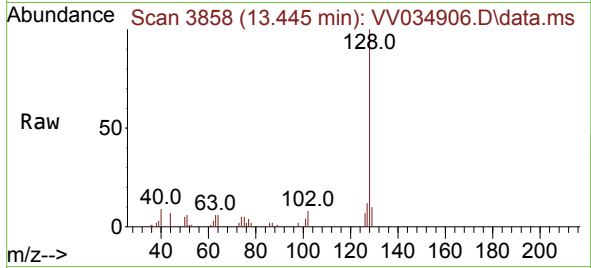
Tgt Ion:180 Resp: 270090
 Ion Ratio Lower Upper
 180 100
 182 95.8 75.6 113.4
 145 29.9 24.1 36.1



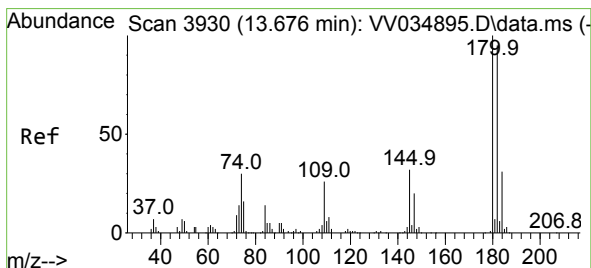
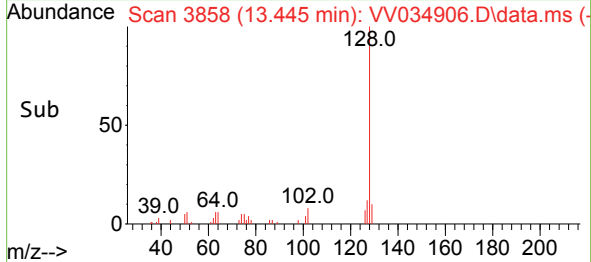
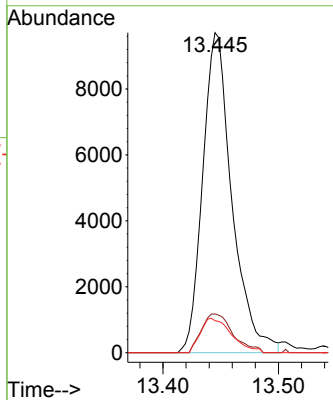


#71
 Naphthalene
 Concen: 1.612 ug/L
 RT: 13.445 min Scan# 3858
 Delta R.T. 0.010 min
 Lab File: VV034906.D
 Acq: 29 Mar 2024 15:25

Instrument : MSVOA_V
 ClientSampled :



Tgt Ion:128 Resp: 17080
 Ion Ratio Lower Upper
 128 100
 127 13.1 10.5 15.7
 129 11.3 8.7 13.1



#72
 1,2,3-Trichlorobenzene
 Concen: 31.329 ug/L
 RT: 13.680 min Scan# 3931
 Delta R.T. 0.000 min
 Lab File: VV034906.D
 Acq: 29 Mar 2024 15:25

Tgt Ion:180 Resp: 117953
 Ion Ratio Lower Upper
 180 100
 182 95.3 76.2 114.2
 145 31.3 25.8 38.6

