

Data Path : Z:\VOASRV\HPCHEM1\MSVOA V\DATA\VV040419\
 Data File : VV010115.D
 Acq On : 04 Apr 2019 17:50
 Operator : SY/MD
 Sample : K2215-17
 Misc : 5.66G/10mL/MSVOA V/SOIL
 ALS Vial : 1 Sample Multiplier: 1

Instrument :
 MSVOA_V
 ClientSampleId :
 BF2P6

Integration Parameters: LSCINT.P

Integrator: RTE
 Smoothing : OFF
 Sampling : 1
 Start Thrs: 0.2
 Stop Thrs : 0

Filtering: 5
 Min Area: 0 % of largest Peak
 Max Peaks: 100
 Peak Location: TOP

If leading or trailing edge < 100 prefer < Baseline drop else tangent >
 Peak separation: 5

Method : Z:\VOASRV\HPCHEM1\MSVOA_V\METHOD\SOM2VLM040219S.M
 Title : VOC Analysis

Signal : TIC

peak #	R.T. min	first scan	max scan	last scan	PK TY	peak height	corr. area	corr. % max.	% of total
1	1.319	65	71	82	rVB	102763	104249	11.18%	1.457%
2	1.573	143	150	159	rVB	94588	111568	11.96%	1.559%
3	2.126	313	322	335	rBV	234112	328344	35.20%	4.589%
4	2.393	404	405	408	rBV2	478	227	0.02%	0.003%
5	2.534	439	449	462	rBV	34892	59630	6.39%	0.833%
6	2.653	473	486	504	rBV2	19216	43407	4.65%	0.607%
7	2.965	580	583	585	rBV3	799	510	0.05%	0.007%
8	3.077	607	618	632	rBV7	3598	7428	0.80%	0.104%
9	3.129	632	634	636	rBV	522	220	0.02%	0.003%
10	3.290	682	684	685	rBV	461	212	0.02%	0.003%
11	3.460	735	737	739	rBV	425	227	0.02%	0.003%
12	3.659	797	799	802	rBV	385	240	0.03%	0.003%
13	3.862	860	862	865	rVB2	542	233	0.02%	0.003%
14	3.881	865	868	872	rBV	298	253	0.03%	0.004%
15	3.936	872	885	917	rBV2	35441	118121	12.66%	1.651%
16	4.110	936	939	940	rBV2	882	450	0.05%	0.006%
17	4.261	984	986	989	rBV	413	233	0.02%	0.003%
18	4.277	989	991	992	rVV	458	223	0.02%	0.003%
19	4.299	996	998	1000	rBV	431	200	0.02%	0.003%
20	4.399	1013	1029	1052	rBV	142918	351823	37.72%	4.917%
21	4.598	1087	1091	1093	rBV3	905	709	0.08%	0.010%
22	4.695	1118	1121	1123	rBV2	846	648	0.07%	0.009%
23	4.823	1159	1161	1165	rVB2	647	361	0.04%	0.005%
24	4.849	1165	1169	1171	rVB2	498	337	0.04%	0.005%
25	4.865	1171	1174	1177	rBV	309	208	0.02%	0.003%
26	4.888	1177	1181	1183	rBV	453	342	0.04%	0.005%
27	4.958	1199	1203	1206	rBV3	585	409	0.04%	0.006%
28	4.994	1212	1214	1216	rVB	504	206	0.02%	0.003%
29	5.010	1216	1219	1223	rBV2	507	554	0.06%	0.008%
30	5.093	1226	1245	1287	rBV2	335811	871490	93.43%	12.180%
31	5.383	1331	1335	1337	rBV2	644	562	0.06%	0.008%
32	5.550	1385	1387	1389	rBV2	480	300	0.03%	0.004%
33	5.560	1389	1390	1394	rVV2	833	362	0.04%	0.005%
34	5.663	1408	1422	1452	rBV	353310	702629	75.32%	9.820%

Data Path : Z:\VOASRV\HPCHEM1\MSVOA V\DATA\VV040419\
 Data File : VV010115.D
 Acq On : 04 Apr 2019 17:50
 Operator : SY/MD
 Sample : K2215-17
 Misc : 5.66G/10mL/MSVOA V/SOIL
 ALS Vial : 1 Sample Multiplier: 1

Instrument :
 MSVOA_V
 ClientSampleId :
 BF2P6

Integration Parameters: LSCINT.P

Integrator: RTE
 Smoothing : OFF
 Sampling : 1
 Start Thrs: 0.2
 Stop Thrs : 0

Filtering: 5
 Min Area: 0 % of largest Peak
 Max Peaks: 100
 Peak Location: TOP

If leading or trailing edge < 100 prefer < Baseline drop else tangent >
 Peak separation: 5

Method : Z:\VOASRV\HPCHEM1\MSVOA_V\METHOD\SOM2VLM040219S.M
 Title : VOC Analysis

35	5.894	1492	1494	1497	rVB2	708	318	0.03%	0.004%
36	5.949	1500	1511	1522	rVB8	4444	8717	0.93%	0.122%
37	6.116	1550	1563	1582	rBV2	189076	381462	40.89%	5.331%
38	6.544	1690	1696	1699	rBV2	716	731	0.08%	0.010%
39	6.640	1724	1726	1728	rBV2	506	290	0.03%	0.004%
40	6.691	1736	1742	1749	rBV7	2556	3660	0.39%	0.051%
41	6.827	1775	1784	1789	rBV5	2735	3995	0.43%	0.056%
42	6.958	1822	1825	1827	rBV3	736	375	0.04%	0.005%
43	7.029	1835	1847	1868	rBV	98076	172345	18.48%	2.409%
44	7.267	1916	1921	1923	rBV2	611	633	0.07%	0.009%
45	7.360	1938	1950	1966	rBV	400988	706667	75.76%	9.877%
46	7.663	2034	2044	2058	rBV2	64115	106473	11.41%	1.488%
47	7.807	2087	2089	2090	rBV2	723	264	0.03%	0.004%
48	8.132	2179	2190	2209	rBV	107860	193264	20.72%	2.701%
49	8.335	2251	2253	2259	rVB4	1166	712	0.08%	0.010%
50	8.447	2286	2288	2290	rBV3	1242	600	0.06%	0.008%
51	8.511	2305	2308	2310	rBV3	669	367	0.04%	0.005%
52	8.543	2315	2318	2323	rVV3	1032	897	0.10%	0.013%
53	8.643	2346	2349	2350	rBV	591	337	0.04%	0.005%
54	8.707	2362	2369	2372	rBV5	1196	1194	0.13%	0.017%
55	8.894	2411	2427	2454	rBV	551434	932803	100.00%	13.037%
56	9.109	2492	2494	2500	rVB4	801	759	0.08%	0.011%
57	9.556	2630	2633	2636	rBV2	597	390	0.04%	0.005%
58	9.572	2636	2638	2640	rBV	534	267	0.03%	0.004%
59	9.727	2684	2686	2688	rBV3	543	275	0.03%	0.004%
60	9.820	2712	2715	2718	rBV2	579	479	0.05%	0.007%
61	9.862	2726	2728	2731	rVB	499	286	0.03%	0.004%
62	9.910	2741	2743	2746	rBV	445	252	0.03%	0.004%
63	9.945	2750	2754	2759	rBV4	1165	1218	0.13%	0.017%
64	10.260	2841	2852	2874	rVB	201372	322176	34.54%	4.503%
65	10.373	2884	2887	2889	rBV3	402	298	0.03%	0.004%
66	10.424	2893	2903	2918	rVB3	12785	22361	2.40%	0.313%
67	10.518	2929	2932	2935	rBV2	346	206	0.02%	0.003%
68	10.617	2962	2963	2965	rBV2	595	281	0.03%	0.004%
69	10.791	3015	3017	3020	rBV	414	227	0.02%	0.003%
70	10.868	3038	3041	3045	rBV2	504	466	0.05%	0.007%
71	10.942	3061	3064	3067	rBV	440	279	0.03%	0.004%

Data Path : Z:\VOASRV\HPCHEM1\MSVOA V\DATA\VV040419\
 Data File : VV010115.D
 Acq On : 04 Apr 2019 17:50
 Operator : SY/MD
 Sample : K2215-17
 Misc : 5.66G/10mL/MSVOA V/SOIL
 ALS Vial : 1 Sample Multiplier: 1

Instrument :
 MSVOA_V
 ClientSampleId :
 BF2P6

Integration Parameters: LSCINT.P

Integrator: RTE
 Smoothing : OFF
 Sampling : 1
 Start Thrs: 0.2
 Stop Thrs : 0

Filtering: 5
 Min Area: 0 % of largest Peak
 Max Peaks: 100
 Peak Location: TOP

If leading or trailing edge < 100 prefer < Baseline drop else tangent >
 Peak separation: 5

Method : Z:\VOASRV\HPCHEM1\MSVOA_V\METHOD\SOM2VLM040219S.M
 Title : VOC Analysis

72	11.109	3111	3116	3118	rBV2	618	516	0.06%	0.007%
73	11.141	3124	3126	3128	rBV	379	195	0.02%	0.003%
74	11.196	3139	3143	3146	rBV4	868	666	0.07%	0.009%
75	11.296	3161	3174	3192	rBV	512760	878599	94.19%	12.280%
76	11.492	3233	3235	3237	rBV	445	214	0.02%	0.003%
77	11.534	3246	3248	3252	rBV	460	362	0.04%	0.005%
78	11.672	3278	3291	3310	rBV	405696	678306	72.72%	9.480%
79	11.833	3339	3341	3343	rBV2	594	370	0.04%	0.005%
80	11.894	3358	3360	3364	rBV3	519	322	0.03%	0.005%
81	11.913	3364	3366	3369	rVB	668	291	0.03%	0.004%
82	11.939	3369	3374	3377	rBV3	363	396	0.04%	0.006%
83	12.022	3397	3400	3402	rBV2	454	284	0.03%	0.004%
84	12.074	3410	3416	3422	rBV3	886	910	0.10%	0.013%
85	12.296	3477	3485	3496	rBV3	7666	12080	1.30%	0.169%
86	12.405	3512	3519	3523	rBV6	1260	1228	0.13%	0.017%
87	12.450	3531	3533	3535	rBV3	675	289	0.03%	0.004%
88	12.527	3553	3557	3561	rVB4	886	810	0.09%	0.011%
89	12.656	3595	3597	3600	rBV	659	343	0.04%	0.005%
90	12.694	3605	3609	3612	rBV3	1143	1214	0.13%	0.017%
91	12.826	3647	3650	3654	rVB	711	534	0.06%	0.007%
92	12.974	3693	3696	3700	rBV3	657	423	0.05%	0.006%
93	13.090	3730	3732	3736	rBV	434	259	0.03%	0.004%
94	13.225	3771	3774	3776	rBV2	750	406	0.04%	0.006%
95	13.315	3796	3802	3805	rBV3	685	681	0.07%	0.010%
96	13.566	3878	3880	3885	rBV2	562	464	0.05%	0.006%
97	13.669	3909	3912	3918	rBV2	582	588	0.06%	0.008%
98	13.826	3958	3961	3965	rBV	419	350	0.04%	0.005%
99	14.264	4095	4097	4099	rBV	607	303	0.03%	0.004%
100	14.887	4289	4291	4293	rBV2	689	343	0.04%	0.005%

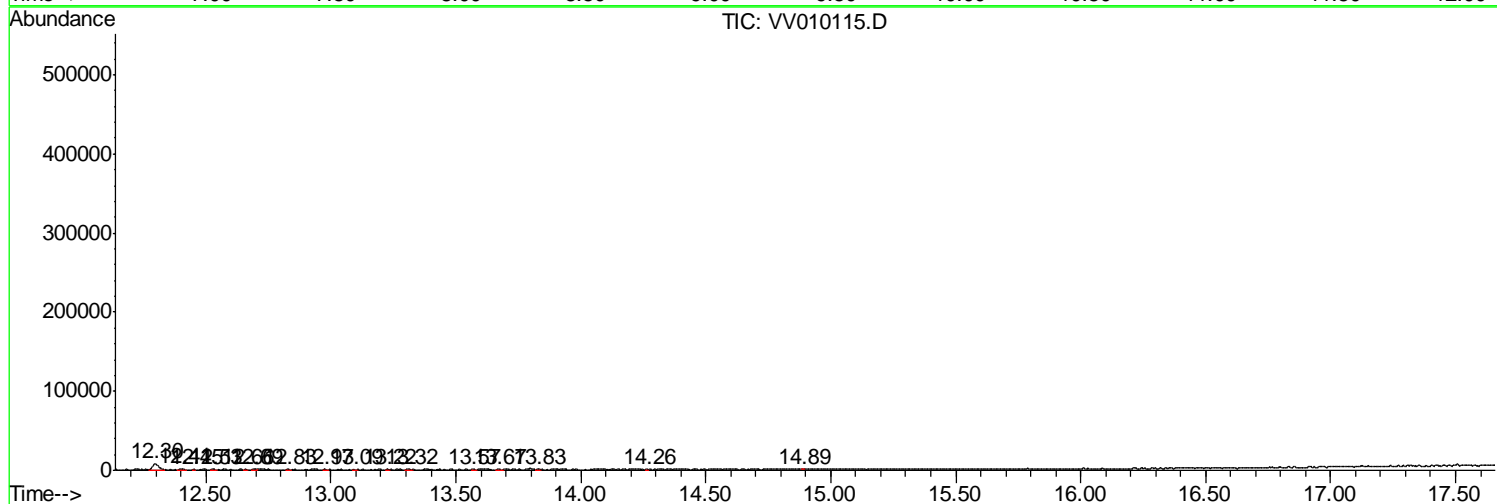
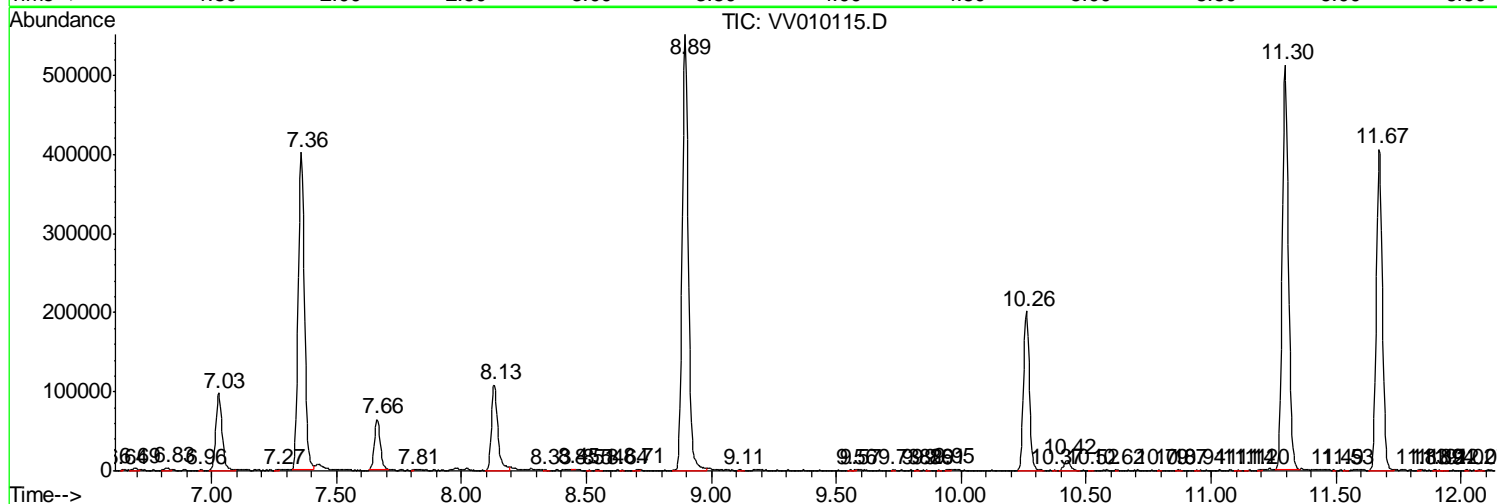
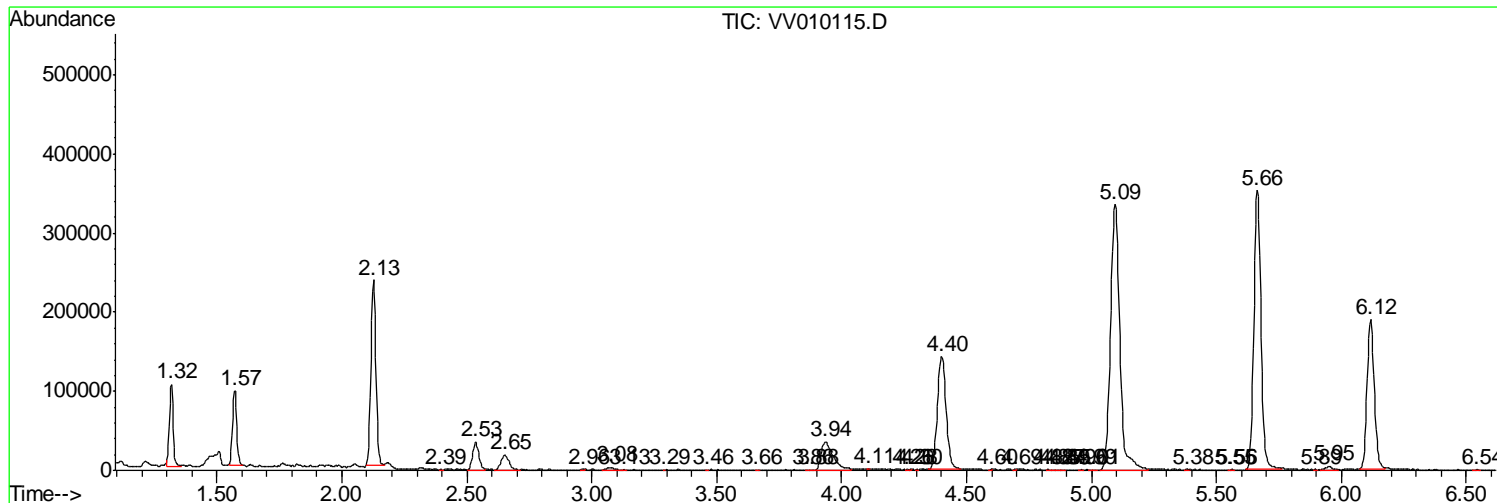
Sum of corrected areas: 7154985

Data Path : Z:\VOASRV\HPCHEM1\MSVOA V\DATA\VV040419\
 Data File : VV010115.D
 Acq On : 04 Apr 2019 17:50
 Operator : SY/MD
 Sample : K2215-17
 Misc : 5.66G/10mL/MSVOA V/SOIL
 ALS Vial : 1 Sample Multiplier: 1

Instrument :
 MSVOA_V
 ClientSampled :
 BF2P6

Quant Method : Z:\VOASRV\HPCHEM1\MSVOA_V\METHOD\SOM2VLM040219S.M
 Quant Title : VOC Analysis

TIC Library : C:\DATABASE\NIST11.L
 TIC Integration Parameters: LSCINT.P



Data Path : Z:\VOASRV\HPCHEM1\MSVOA V\DATA\VV040419\
 Data File : VV010115.D
 Acq On : 04 Apr 2019 17:50
 Operator : SY/MD
 Sample : K2215-17
 Misc : 5.66G/10mL/MSVOA V/SOIL
 ALS Vial : 1 Sample Multiplier: 1

Instrument :
 MSVOA_V
 ClientSampleID :
 BF2P6

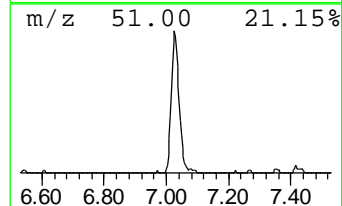
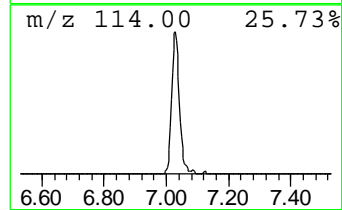
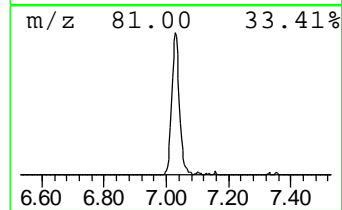
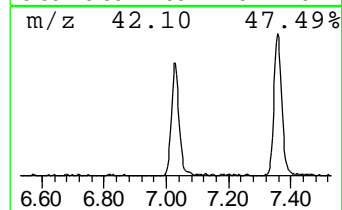
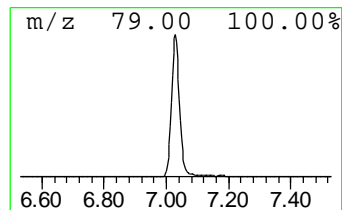
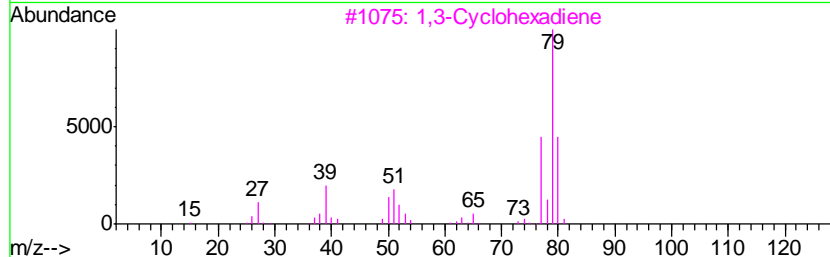
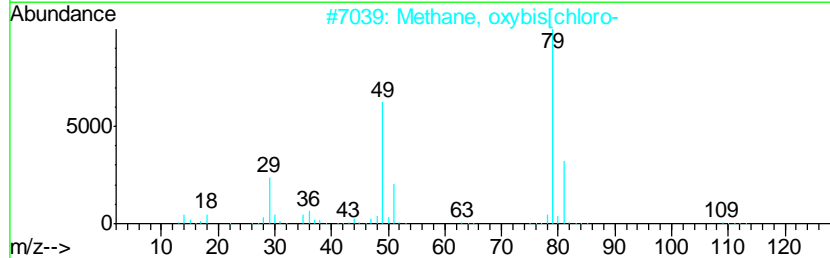
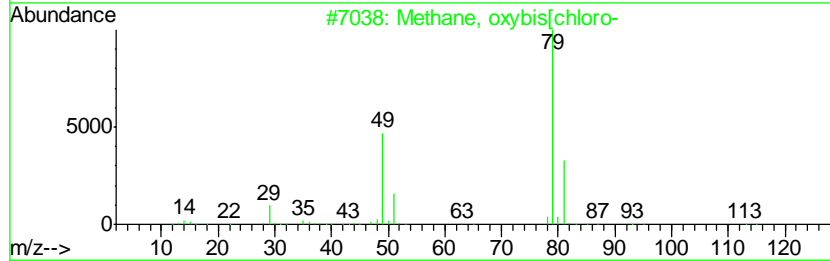
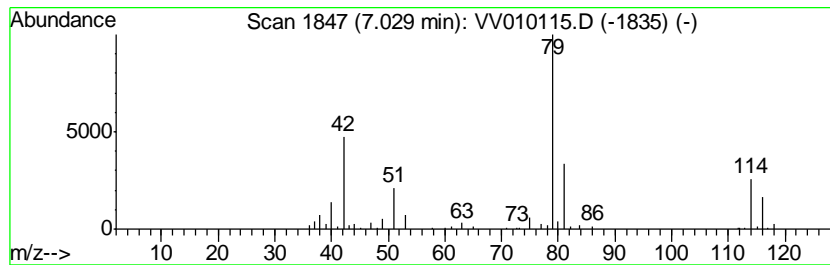
Quant Method : Z:\VOASRV\HPCHEM1\MSVOA_V\METHOD\SOM2VLM040219S.M
 Quant Title : VOC Analysis

TIC Library : C:\DATABASE\NIST11.L
 TIC Integration Parameters: LSCINT.P

 Peak Number 2 unknown-01 Concentration Rank 1

R.T.	EstConc	Area	Relative to ISTD	R.T.
7.03	6.13 ug/L	172345	1,4-Difluorobenzene	5.66

Hit#	of	Tentative ID	MW	MolForm	CAS#	Qual
1	5	Methane, oxybis[chloro-	114	C2H4Cl2O	000542-88-1	37
2		Methane, oxybis[chloro-	114	C2H4Cl2O	000542-88-1	28
3		1,3-Cyclohexadiene	80	C6H8	000592-57-4	25
4		1,4-Cyclohexadiene	80	C6H8	000628-41-1	25
5		.alpha.,.alpha.-Dichloromethyl m...	114	C2H4Cl2O	004885-02-3	23



Data Path : Z:\VOASRV\HPCHEM1\MSVOA_V\DATA\VV040419\
Data File : VV010115.D
Acq On : 04 Apr 2019 17:50
Operator : SY/MD
Sample : K2215-17
Misc : 5.66G/10mL/MSVOA_V/SOIL
ALS Vial : 1 Sample Multiplier: 1

Instrument :
MSVOA_V
ClientSampleId :
BF2P6

Quant Method : Z:\VOASRV\HPCHEM1\MSVOA_V\METHOD\SOM2VLM040219S.M
Quant Title : VOC Analysis

TIC Library : C:\DATABASE\NIST11.L
TIC Integration Parameters: LSCINT.P

TIC Top Hit name	RT	EstConc	Units	Response	--Internal Standard--			
					#	RT	Resp	Conc
unknown-01	7.03	6.1	ug/L	172345	1	5.66	702629	25.0