

Data Path : Z:\VOASRV\HPCHEM1\MSVOA V\DATA\VV040419\
 Data File : VV010118.D
 Acq On : 04 Apr 2019 19:09
 Operator : SY/MD
 Sample : K2119-15
 Misc : 5.19G/10mL/MSVOA V/SOIL
 ALS Vial : 1 Sample Multiplier: 1

Instrument :
 MSVOA_V
 ClientSampleId :
 BF5B3

Integration Parameters: LSCINT.P

Integrator: RTE
 Smoothing : OFF
 Sampling : 1
 Start Thrs: 0.2
 Stop Thrs : 0

Filtering: 5
 Min Area: 0 % of largest Peak
 Max Peaks: 100
 Peak Location: TOP

If leading or trailing edge < 100 prefer < Baseline drop else tangent >
 Peak separation: 5

Method : Z:\VOASRV\HPCHEM1\MSVOA_V\METHOD\SOM2VLM040219S.M
 Title : VOC Analysis

Signal : TIC

peak #	R.T. min	first scan	max scan	last scan	PK TY	peak height	corr. area	corr. % max.	% of total
1	1.322	65	72	86	rVB	110003	115587	13.53%	1.688%
2	1.573	143	150	166	rVB	99901	122457	14.33%	1.788%
3	2.129	313	323	334	rBV	276109	392606	45.94%	5.734%
4	2.309	370	379	394	rVB5	4407	8772	1.03%	0.128%
5	2.421	410	414	415	rBV2	729	496	0.06%	0.007%
6	2.537	439	450	464	rVV2	26850	46942	5.49%	0.686%
7	2.785	525	527	531	rBV3	733	658	0.08%	0.010%
8	2.955	577	580	582	rVB2	586	353	0.04%	0.005%
9	3.007	594	596	599	rVB2	852	365	0.04%	0.005%
10	3.074	606	617	630	rVV4	5186	10470	1.23%	0.153%
11	3.241	664	669	671	rBV2	511	374	0.04%	0.005%
12	3.441	729	731	735	rVB3	537	274	0.03%	0.004%
13	3.476	739	742	744	rBV2	407	327	0.04%	0.005%
14	3.537	759	761	766	rVB3	619	388	0.05%	0.006%
15	3.733	820	822	825	rBV2	484	317	0.04%	0.005%
16	3.852	856	859	863	rBV2	565	364	0.04%	0.005%
17	3.933	872	884	904	rBV2	22744	59615	6.98%	0.871%
18	4.402	1012	1030	1048	rBV	149205	367946	43.06%	5.374%
19	4.617	1095	1097	1100	rBV2	670	306	0.04%	0.004%
20	4.823	1155	1161	1163	rBV3	711	482	0.06%	0.007%
21	4.926	1190	1193	1194	rVV	703	315	0.04%	0.005%
22	5.097	1226	1246	1271	rBV2	342100	854592	100.00%	12.481%
23	5.434	1348	1351	1354	rBV3	455	289	0.03%	0.004%
24	5.450	1354	1356	1359	rVB2	564	329	0.04%	0.005%
25	5.470	1359	1362	1364	rBV2	626	374	0.04%	0.005%
26	5.588	1395	1399	1402	rBV3	421	361	0.04%	0.005%
27	5.666	1408	1423	1441	rBV	334714	663550	77.65%	9.691%
28	5.952	1504	1512	1523	rVB8	4317	7549	0.88%	0.110%
29	6.016	1527	1532	1534	rBV3	989	901	0.11%	0.013%
30	6.116	1548	1563	1592	rBV2	194022	394043	46.11%	5.755%
31	6.360	1635	1639	1646	rBV4	719	653	0.08%	0.010%
32	6.421	1654	1658	1660	rBV3	265	267	0.03%	0.004%
33	6.473	1672	1674	1678	rVB3	442	284	0.03%	0.004%
34	6.514	1682	1687	1688	rBV2	611	434	0.05%	0.006%

Data Path : Z:\VOASRV\HPCHEM1\MSVOA V\DATA\VV040419\
 Data File : VV010118.D
 Acq On : 04 Apr 2019 19:09
 Operator : SY/MD
 Sample : K2119-15
 Misc : 5.19G/10mL/MSVOA V/SOIL
 ALS Vial : 1 Sample Multiplier: 1

Instrument :
 MSVOA_V
 ClientSampleId :
 BF5B3

Integration Parameters: LSCINT.P

Integrator: RTE
 Smoothing : OFF
 Sampling : 1
 Start Thrs: 0.2
 Stop Thrs : 0

Filtering: 5
 Min Area: 0 % of largest Peak
 Max Peaks: 100
 Peak Location: TOP

If leading or trailing edge < 100 prefer < Baseline drop else tangent >
 Peak separation: 5

Method : Z:\VOASRV\HPCHEM1\MSVOA_V\METHOD\SOM2VLM040219S.M
 Title : VOC Analysis

35	6.640	1722	1726	1727	rBV2	1035	594	0.07%	0.009%
36	6.682	1737	1739	1740	rBV2	782	313	0.04%	0.005%
37	6.778	1766	1769	1773	rBV3	271	265	0.03%	0.004%
38	6.823	1778	1783	1785	rBV2	713	607	0.07%	0.009%
39	6.955	1822	1824	1827	rBV2	414	334	0.04%	0.005%
40	7.029	1835	1847	1870	rBV	93741	171193	20.03%	2.500%
41	7.360	1936	1950	1969	rBV	427233	753464	88.17%	11.004%
42	7.608	2025	2027	2031	rBV2	630	341	0.04%	0.005%
43	7.662	2034	2044	2061	rBV	61285	105309	12.32%	1.538%
44	7.807	2087	2089	2092	rBV4	690	434	0.05%	0.006%
45	7.881	2108	2112	2113	rBV2	493	383	0.04%	0.006%
46	8.019	2147	2155	2167	rVB6	9615	16622	1.95%	0.243%
47	8.132	2180	2190	2204	rBV2	78693	138343	16.19%	2.020%
48	8.572	2322	2327	2329	rBV2	689	531	0.06%	0.008%
49	8.704	2364	2368	2372	rBV5	955	695	0.08%	0.010%
50	8.813	2399	2402	2406	rVB2	500	458	0.05%	0.007%
51	8.897	2412	2428	2450	rBV	499453	848321	99.27%	12.389%
52	9.061	2473	2479	2484	rBV3	1004	995	0.12%	0.015%
53	9.254	2537	2539	2542	rVB2	1053	549	0.06%	0.008%
54	9.273	2542	2545	2548	rBV2	477	411	0.05%	0.006%
55	9.392	2580	2582	2586	rBV2	627	360	0.04%	0.005%
56	9.418	2586	2590	2595	rVB2	408	401	0.05%	0.006%
57	9.473	2605	2607	2609	rBV	428	263	0.03%	0.004%
58	9.511	2616	2619	2622	rBV2	425	329	0.04%	0.005%
59	10.010	2772	2774	2777	rVB	687	413	0.05%	0.006%
60	10.190	2825	2830	2831	rBV	600	374	0.04%	0.005%
61	10.260	2840	2852	2871	rVV	160719	262965	30.77%	3.840%
62	10.399	2891	2895	2896	rBV2	979	533	0.06%	0.008%
63	10.424	2896	2903	2913	rVB4	6332	10532	1.23%	0.154%
64	10.463	2913	2915	2917	rBV	688	371	0.04%	0.005%
65	10.579	2947	2951	2953	rBV	430	343	0.04%	0.005%
66	10.707	2986	2991	2995	rBV2	644	489	0.06%	0.007%
67	10.842	3030	3033	3038	rVB2	830	604	0.07%	0.009%
68	10.923	3056	3058	3063	rVB2	592	399	0.05%	0.006%
69	10.961	3063	3070	3077	rBV6	969	1768	0.21%	0.026%
70	11.077	3101	3106	3107	rBV3	719	569	0.07%	0.008%
71	11.193	3134	3142	3149	rBV5	1592	2625	0.31%	0.038%

Data Path : Z:\VOASRV\HPCHEM1\MSVOA V\DATA\VV040419\
 Data File : VV010118.D
 Acq On : 04 Apr 2019 19:09
 Operator : SY/MD
 Sample : K2119-15
 Misc : 5.19G/10mL/MSVOA V/SOIL
 ALS Vial : 1 Sample Multiplier: 1

Instrument :
 MSVOA_V
 ClientSampleId :
 BF5B3

Integration Parameters: LSCINT.P

Integrator: RTE
 Smoothing : OFF
 Sampling : 1
 Start Thrs: 0.2
 Stop Thrs : 0

Filtering: 5
 Min Area: 0 % of largest Peak
 Max Peaks: 100
 Peak Location: TOP

If leading or trailing edge < 100 prefer < Baseline drop else tangent >
 Peak separation: 5

Method : Z:\VOASRV\HPCHEM1\MSVOA_V\METHOD\SOM2VLM040219S.M
 Title : VOC Analysis

72	11.296	3162	3174	3191	rBV	460988	793758	92.88%	11.592%
73	11.556	3253	3255	3257	rBV	410	265	0.03%	0.004%
74	11.672	3279	3291	3309	rVV	386626	649344	75.98%	9.483%
75	11.881	3350	3356	3358	rBV4	1492	1516	0.18%	0.022%
76	11.926	3368	3370	3374	rVB2	764	348	0.04%	0.005%
77	12.006	3393	3395	3398	rBV2	646	417	0.05%	0.006%
78	12.022	3398	3400	3404	rVV2	989	666	0.08%	0.010%
79	12.058	3408	3411	3414	rVB4	546	328	0.04%	0.005%
80	12.122	3427	3431	3434	rBV	689	571	0.07%	0.008%
81	12.235	3463	3466	3468	rBV2	428	267	0.03%	0.004%
82	12.299	3479	3486	3492	rBV3	3447	4181	0.49%	0.061%
83	12.353	3499	3503	3507	rBV2	658	460	0.05%	0.007%
84	12.505	3545	3550	3551	rBV	373	267	0.03%	0.004%
85	12.698	3605	3610	3611	rBV2	709	540	0.06%	0.008%
86	12.765	3629	3631	3635	rVB	537	318	0.04%	0.005%
87	12.987	3696	3700	3704	rBV3	499	431	0.05%	0.006%
88	13.093	3730	3733	3735	rBV2	522	325	0.04%	0.005%
89	13.312	3798	3801	3803	rBV3	674	466	0.05%	0.007%
90	13.382	3820	3823	3824	rBV2	468	300	0.04%	0.004%
91	13.415	3831	3833	3835	rBV	609	323	0.04%	0.005%
92	13.543	3870	3873	3876	rBV	572	437	0.05%	0.006%
93	13.617	3893	3896	3898	rBV	528	299	0.03%	0.004%
94	13.659	3906	3909	3911	rBV	646	364	0.04%	0.005%
95	13.794	3941	3951	3960	rBV6	6707	10592	1.24%	0.155%
96	13.874	3972	3976	3979	rBV3	946	822	0.10%	0.012%
97	13.890	3979	3981	3986	rVB4	784	469	0.05%	0.007%
98	14.312	4109	4112	4119	rVB5	980	929	0.11%	0.014%
99	14.350	4119	4124	4125	rBV3	616	467	0.05%	0.007%
100	14.511	4171	4174	4182	rVB5	1238	1159	0.14%	0.017%

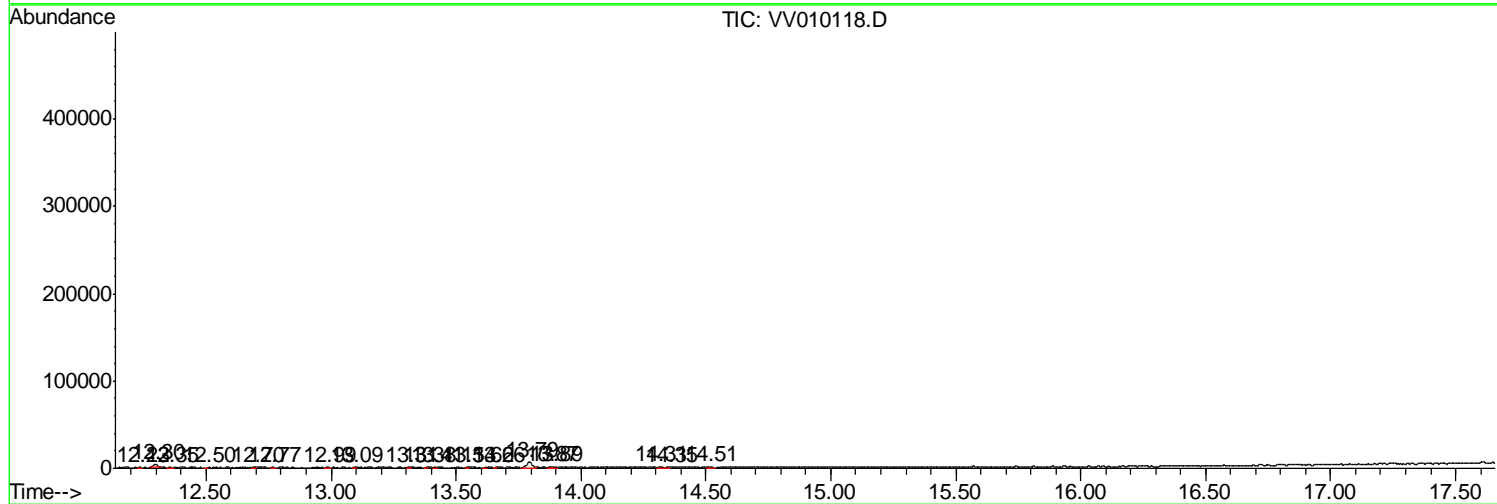
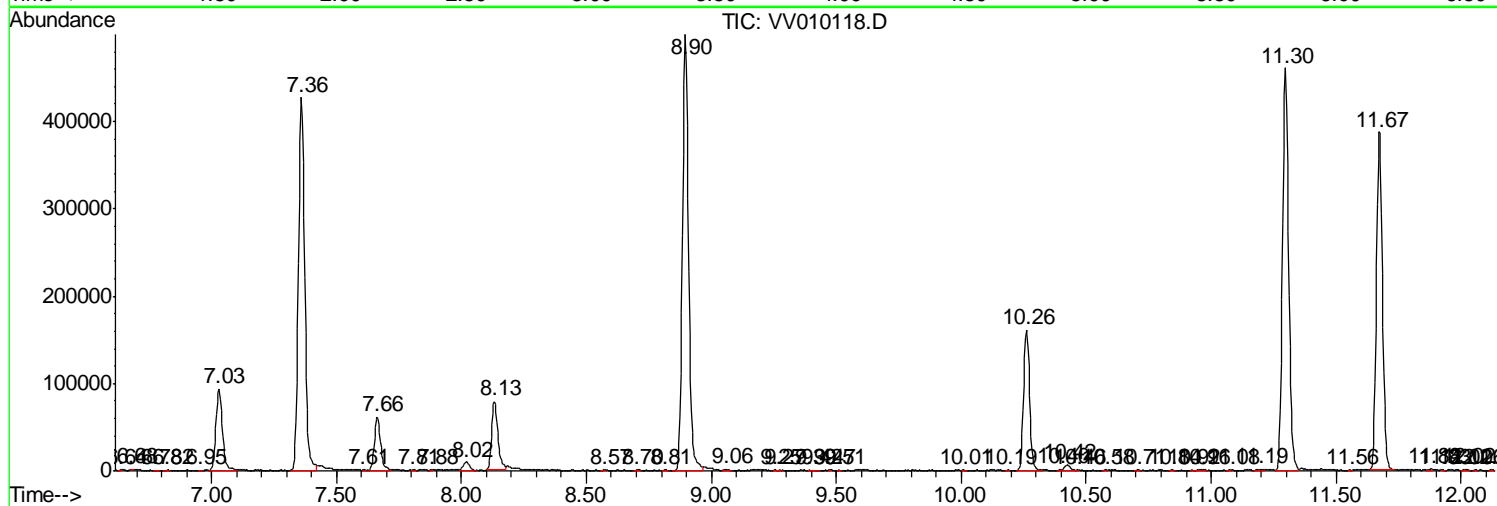
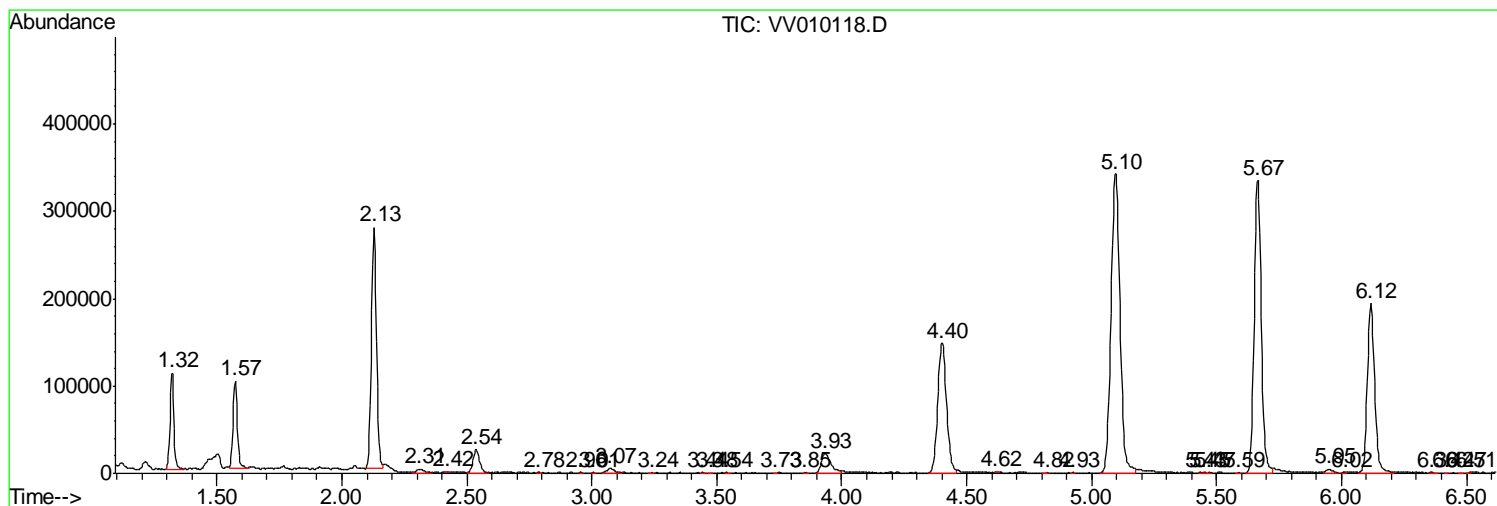
Sum of corrected areas: 6847169

Data Path : Z:\VOASRV\HPCHEM1\MSVOA V\DATA\VV040419\
 Data File : VV010118.D
 Acq On : 04 Apr 2019 19:09
 Operator : SY/MD
 Sample : K2119-15
 Misc : 5.19G/10mL/MSVOA V/SOIL
 ALS Vial : 1 Sample Multiplier: 1

Instrument :
 MSVOA_V
 ClientSampled :
 BF5B3

Quant Method : Z:\VOASRV\HPCHEM1\MSVOA_V\METHOD\SOM2VLM040219S.M
 Quant Title : VOC Analysis

TIC Library : C:\DATABASE\NIST11.L
 TIC Integration Parameters: LSCINT.P



Data Path : Z:\VOASRV\HPCHEM1\MSVOA_V\DATA\VV040419\
Data File : VV010118.D
Acq On : 04 Apr 2019 19:09
Operator : SY/MD
Sample : K2119-15
Misc : 5.19G/10mL/MSVOA_V/SOIL
ALS Vial : 1 Sample Multiplier: 1

Instrument :
MSVOA_V
ClientSampleId :
BF5B3

Quant Method : Z:\VOASRV\HPCHEM1\MSVOA_V\METHOD\SOM2VLM040219S.M
Quant Title : VOC Analysis

TIC Library : C:\DATABASE\NIST11.L
TIC Integration Parameters: LSCINT.P

No Library Search Compounds Detected

Data Path : Z:\VOASRV\HPCHEM1\MSVOA_V\DATA\VV040419\
Data File : VV010118.D
Acq On : 04 Apr 2019 19:09
Operator : SY/MD
Sample : K2119-15
Misc : 5.19G/10mL/MSVOA_V/SOIL
ALS Vial : 1 Sample Multiplier: 1

Instrument :
MSVOA_V
ClientSampleId :
BF5B3

Quant Method : Z:\VOASRV\HPCHEM1\MSVOA_V\METHOD\SOM2VLM040219S.M
Quant Title : VOC Analysis

TIC Library : C:\DATABASE\NIST11.L
TIC Integration Parameters: LSCINT.P

TIC Top Hit name	RT	EstConc	Units	Response	--Internal Standard--			
					#	RT	Resp	Conc
