

Data Path : Z:\voasrv\HPCHEM1\MSVOA_V\Data\VW040722\
 Data File : VW025382.D
 Acq On : 07 Apr 2022 13:41
 Operator : SY/MD
 Sample : N2261-07
 Misc : 25mL/MSVOA_V/WATER
 ALS Vial : 7 Sample Multiplier: 1

Instrument :
 MSVOA_V
ClientSampleId :
 BFY43

Manual Integrations
APPROVED
 Reviewed By :John Carlone 04/08/2022
 Supervised By :Mahesh Dadoda 04/08/2022

Quant Time: Apr 08 01:21:28 2022
 Quant Method : Z:\voasrv\HPCHEM1\MSVOA_V\Method\SFAMVTR032622WMA.M
 Quant Title : TRACE VOA SFAM1.0
 QLast Update : Fri Apr 08 01:19:10 2022
 Response via : Initial Calibration

Compound	R.T.	QIon	Response	Conc	Units	Dev(Min)
Internal Standards						
1) 1,4-Difluorobenzene	5.658	114	195707	5.000	ug/L	0.05
28) Chlorobenzene-d5	8.860	117	181893	5.000	ug/L	0.00
58) 1,4-Dichlorobenzene-d4	11.249	152	92973	5.000	ug/L	0.00
System Monitoring Compounds						
4) Vinyl Chloride-d3	1.298	65	92511	5.061	ug/L	0.00
Spiked Amount	5.000	Range 40 - 130	Recovery	=	101.200%	
7) Chloroethane-d5	1.568	69	79206	5.162	ug/L	0.00
Spiked Amount	5.000	Range 65 - 130	Recovery	=	103.200%	
11) 1,1-Dichloroethene-d2	2.130	63	148164	3.742	ug/L	0.02
Spiked Amount	5.000	Range 60 - 125	Recovery	=	74.800%	
20) 2-Butanone-d5	3.989	46	246838	135.553	ug/L	0.11
Spiked Amount	50.000	Range 40 - 130	Recovery	=	271.100%#	
24) Chloroform-d	4.359	84	123568	5.180	ug/L	0.01
Spiked Amount	5.000	Range 70 - 125	Recovery	=	103.600%	
26) 1,2-Dichloroethane-d4	5.056	65	54300	5.149	ug/L	0.03
Spiked Amount	5.000	Range 70 - 130	Recovery	=	103.000%	
32) Benzene-d6	5.063	84	238398	5.181	ug/L	0.02
Spiked Amount	5.000	Range 70 - 125	Recovery	=	103.600%	
36) 1,2-Dichloropropane-d6	6.104	67	69853	5.416	ug/L	0.04
Spiked Amount	5.000	Range 60 - 140	Recovery	=	108.400%	
41) Toluene-d8	7.336	98	205910	4.878	ug/L	0.02
Spiked Amount	5.000	Range 70 - 130	Recovery	=	97.600%	
43) trans-1,3-Dichloroprop...	7.641	79	21223	5.044	ug/L	0.02
Spiked Amount	5.000	Range 55 - 130	Recovery	=	100.800%	
46) 2-Hexanone-d5	8.111	63	91891	60.475	ug/L	0.03
Spiked Amount	50.000	Range 45 - 130	Recovery	=	120.960%	
56) 1,1,2,2-Tetrachloroeth...	10.220	84	48906	5.687	ug/L	0.00
Spiked Amount	5.000	Range 65 - 120	Recovery	=	113.800%	
66) 1,2-Dichlorobenzene-d4	11.625	152	79966	5.355	ug/L	0.00
Spiked Amount	5.000	Range 80 - 120	Recovery	=	107.200%	
Target Compounds						
3) Chloromethane	1.233	50	2263	0.098	ug/L #	77
12) 1,1-Dichloroethene	2.140	96	32552	1.652	ug/L #	44
13) Acetone	2.281	43	22364	16.095	ug/L	90
17) Methyl tert-butyl Ether	2.802	73	8075	0.324	ug/L #	94
19) 1,1-Dichloroethane	3.198	63	197581	8.369	ug/L	98
21) 2-Butanone	4.076	43	13984m	7.314	ug/L	
22) cis-1,2-Dichloroethene	3.918	96	2781	0.194	ug/L	85
25) Chloroform	4.384	83	6594	0.252	ug/L	89
29) 1,1,1-Trichloroethane	4.606	97	11063	0.503	ug/L	97
33) Benzene	5.121	78	17840	0.334	ug/L	100
34) Trichloroethene	5.950	95	20174	1.377	ug/L	94
42) Toluene	7.410	91	35913	0.631	ug/L	100
47) Tetrachloroethene	7.989	164	4632	0.429	ug/L	95

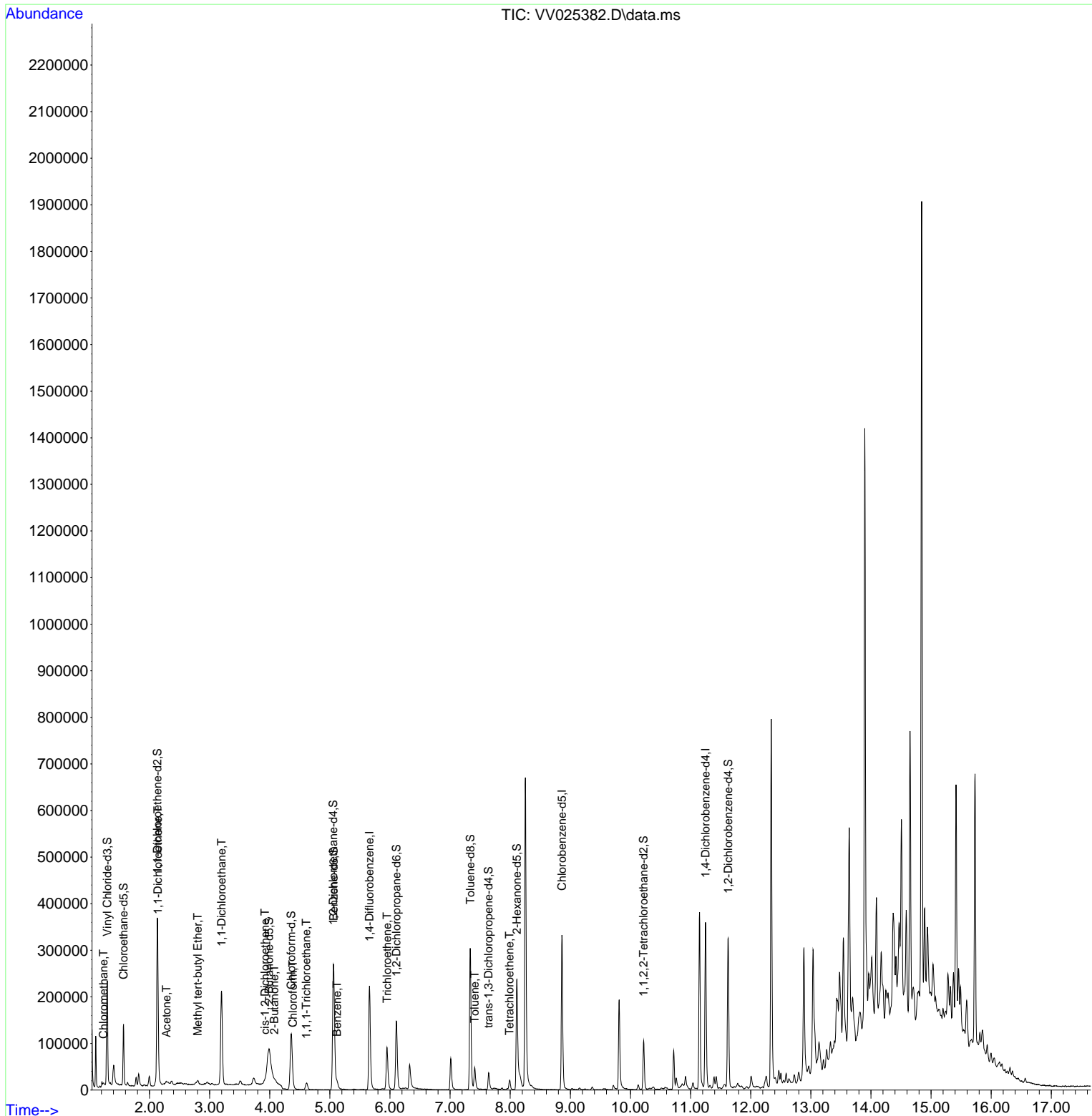
(#) = qualifier out of range (m) = manual integration (+) = signals summed

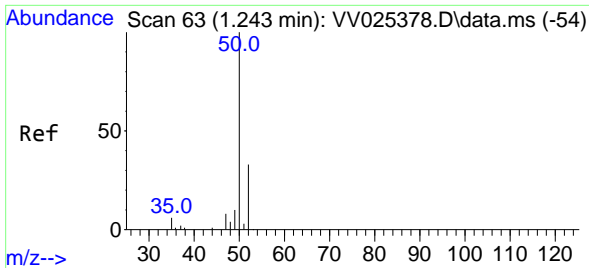
Data Path : Z:\voasrv\HPCHEM1\MSVOA_V\Data\VV040722\
 Data File : VV025382.D
 Acq On : 07 Apr 2022 13:41
 Operator : SY/MD
 Sample : N2261-07
 Misc : 25mL/MSVOA_V/WATER
 ALS Vial : 7 Sample Multiplier: 1

Instrument :
 MSVOA_V
ClientSampleId :
 BFY43

Quant Time: Apr 08 01:21:28 2022
 Quant Method : Z:\voasrv\HPCHEM1\MSVOA_V\Method\SFAMVTR032622WMA.M
 Quant Title : TRACE VOA SFAM1.0
 QLast Update : Fri Apr 08 01:19:10 2022
 Response via : Initial Calibration

Manual Integrations
APPROVED
 Reviewed By :John Carlone 04/08/2022
 Supervised By :Mahesh Dadoda 04/08/2022





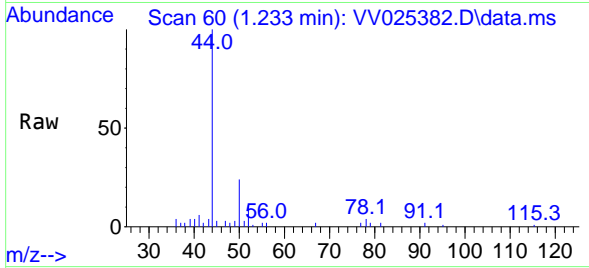
#3
 Chloromethane
 Concen: 0.098 ug/L
 RT: 1.233 min Scan# 60
 Delta R.T. -0.010 min
 Lab File: VV025382.D
 Acq: 07 Apr 2022 13:41

Instrument :

MSVOA_V

ClientSampleId :

BFY43

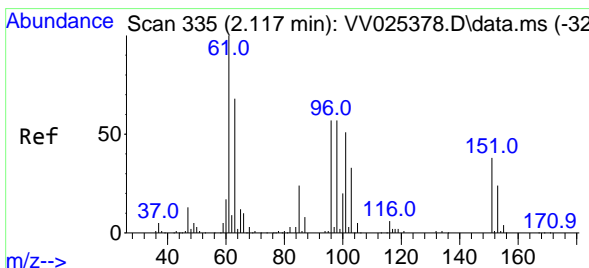
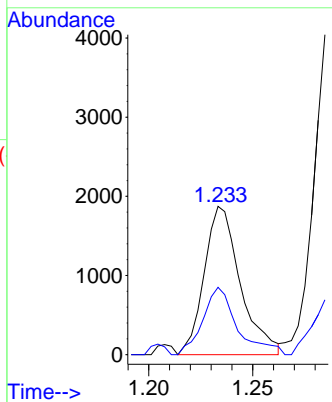
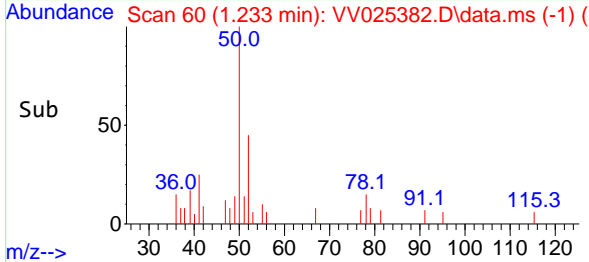


Tgt Ion: 50 Resp: 226
 Ion Ratio Lower Upper
 50 100
 52 45.4 22.9 42.5

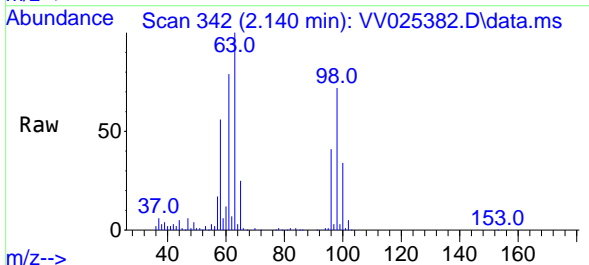
Manual Integrations

APPROVED

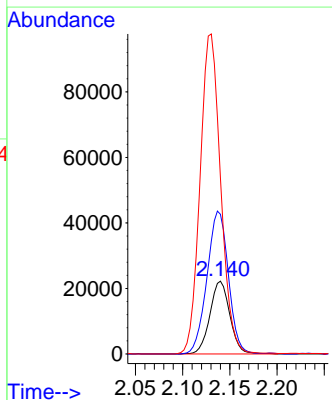
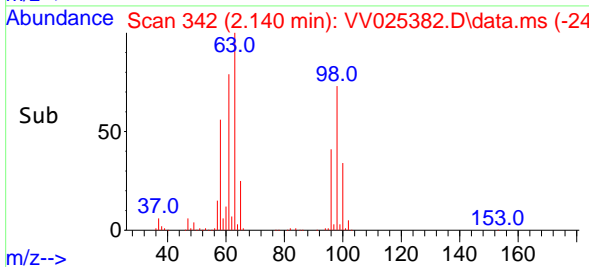
Reviewed By :John Carlone 04/08/2022
 Supervised By :Mahesh Dadoda 04/08/2022

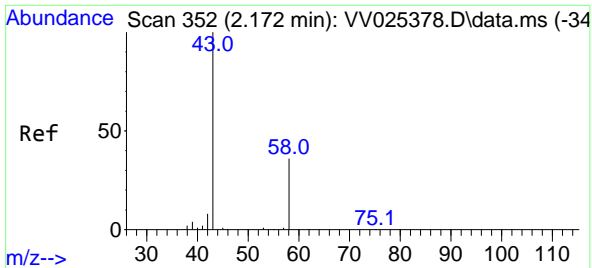


#12
 1,1-Dichloroethene
 Concen: 1.652 ug/L
 RT: 2.140 min Scan# 342
 Delta R.T. 0.023 min
 Lab File: VV025382.D
 Acq: 07 Apr 2022 13:41



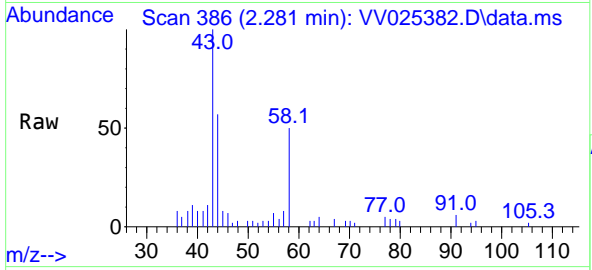
Tgt Ion: 96 Resp: 32552
 Ion Ratio Lower Upper
 96 100
 61 191.8 121.5 225.7
 63 241.9 77.9 144.7#





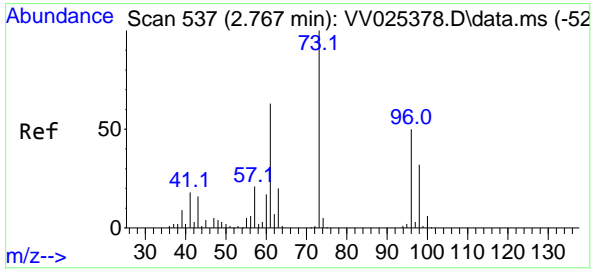
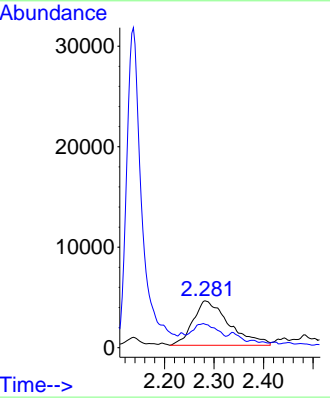
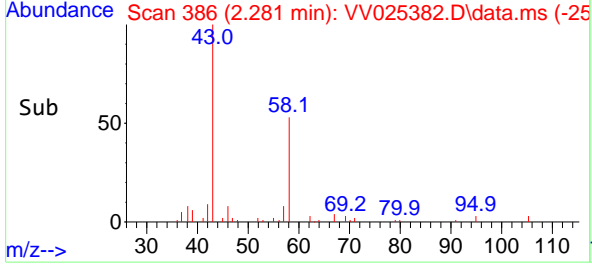
#13
 Acetone
 Concen: 16.095 ug/L
 RT: 2.281 min Scan# 31
 Delta R.T. 0.109 min
 Lab File: VV025382.D
 Acq: 07 Apr 2022 13:41

Instrument : MSVOA_V
 ClientSampleId : BFY43

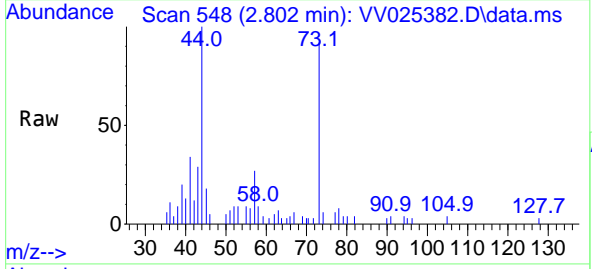


Tgt Ion: 43 Resp: 2236
 Ion Ratio Lower Upper
 43 100
 58 30.4 0.0 51.2

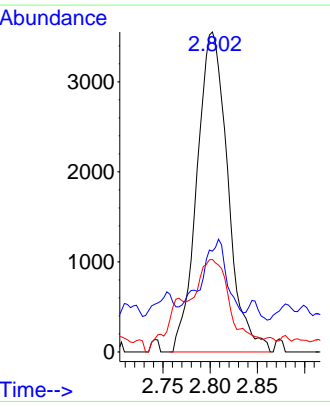
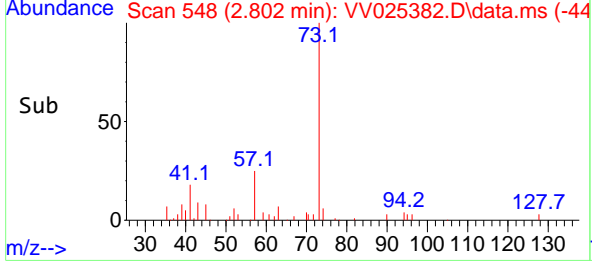
Manual Integrations
APPROVED
 Reviewed By :John Carlone 04/08/2022
 Supervised By :Mahesh Dadoda 04/08/2022

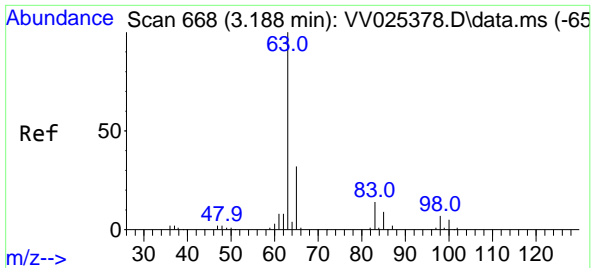


#17
 Methyl tert-butyl Ether
 Concen: 0.324 ug/L
 RT: 2.802 min Scan# 548
 Delta R.T. 0.035 min
 Lab File: VV025382.D
 Acq: 07 Apr 2022 13:41



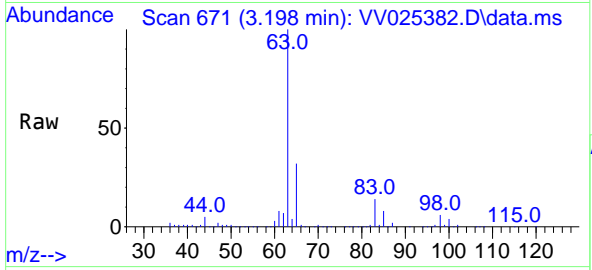
Tgt Ion: 73 Resp: 8075
 Ion Ratio Lower Upper
 73 100
 43 17.7 13.5 20.3
 57 24.9 16.4 24.6#





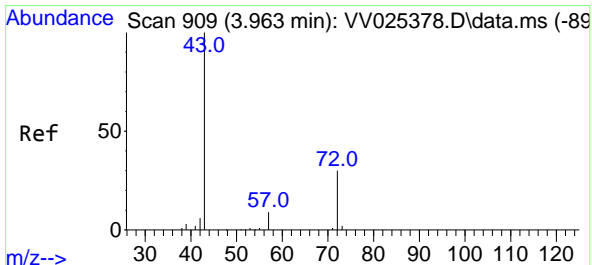
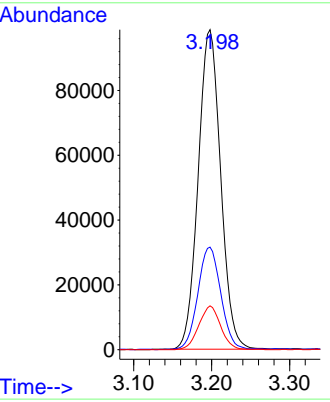
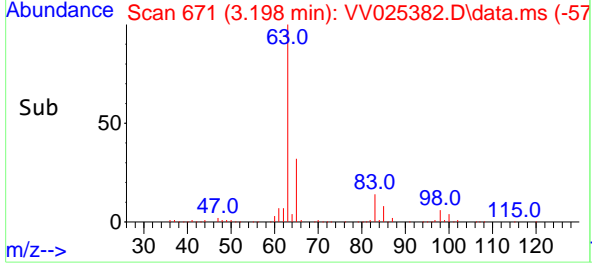
#19
 1,1-Dichloroethane
 Concen: 8.369 ug/L
 RT: 3.198 min Scan# 61
 Delta R.T. 0.010 min
 Lab File: VV025382.D
 Acq: 07 Apr 2022 13:41

Instrument : MSVOA_V
 ClientSampleId : BFY43

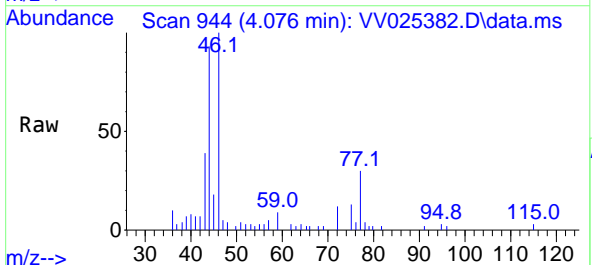


Tgt Ion: 63 Resp: 19758
 Ion Ratio Lower Upper
 63 100
 65 32.1 22.0 40.8
 83 13.7 10.2 19.0

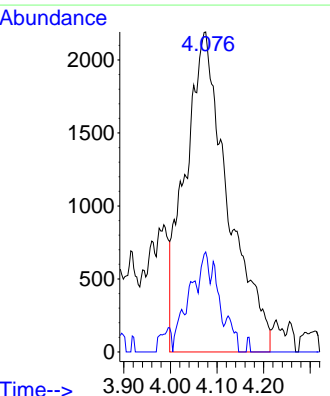
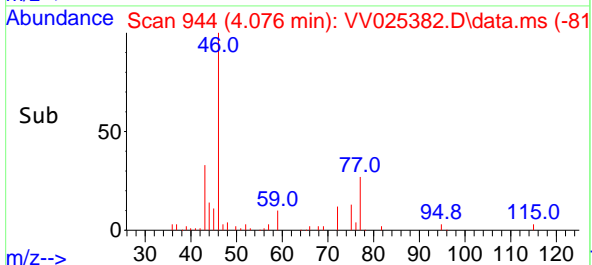
Manual Integrations
APPROVED
 Reviewed By :John Carlone 04/08/2022
 Supervised By :Mahesh Dadoda 04/08/2022

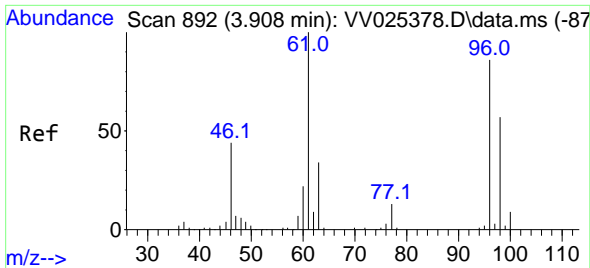


#21
 2-Butanone
 Concen: 7.314 ug/L m
 RT: 4.076 min Scan# 944
 Delta R.T. 0.113 min
 Lab File: VV025382.D
 Acq: 07 Apr 2022 13:41



Tgt Ion: 43 Resp: 13984
 Ion Ratio Lower Upper
 43 100
 72 6.5 11.8 35.4#





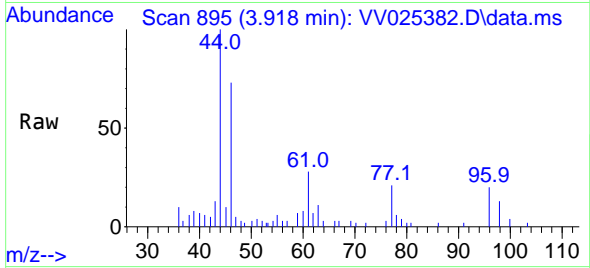
#22
 cis-1,2-Dichloroethene
 Concen: 0.194 ug/L
 RT: 3.918 min Scan# 892
 Delta R.T. 0.010 min
 Lab File: VV025382.D
 Acq: 07 Apr 2022 13:41

Instrument :

MSVOA_V

Client SampleId :

BFY43

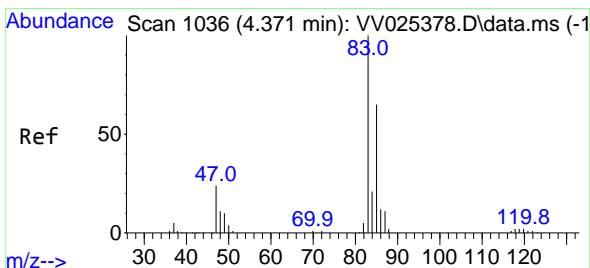
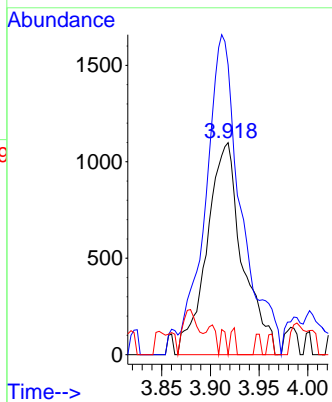
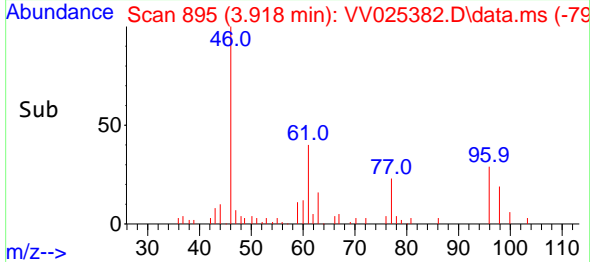


Tgt Ion: 96 Resp: 278
 Ion Ratio Lower Upper
 96 100
 61 136.7 84.1 156.1
 68 0.0 0.0 0.0

Manual Integrations

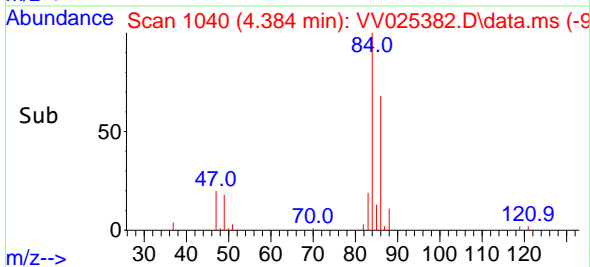
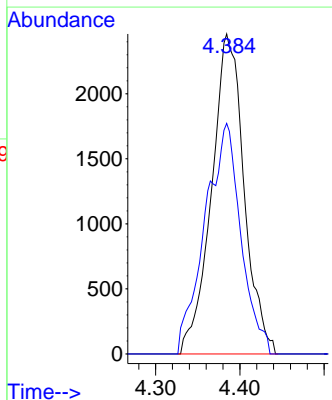
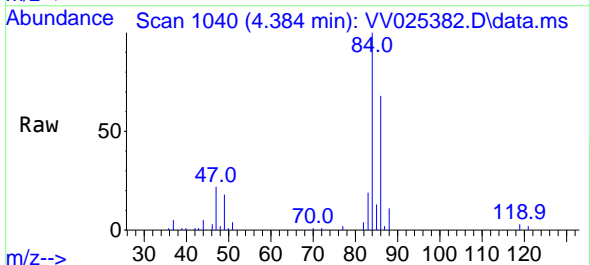
APPROVED

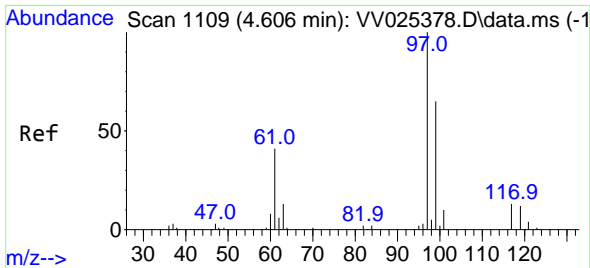
Reviewed By :John Carlone 04/08/2022
 Supervised By :Mahesh Dadoda 04/08/2022



#25
 Chloroform
 Concen: 0.252 ug/L
 RT: 4.384 min Scan# 1040
 Delta R.T. 0.013 min
 Lab File: VV025382.D
 Acq: 07 Apr 2022 13:41

Tgt Ion: 83 Resp: 6594
 Ion Ratio Lower Upper
 83 100
 85 72.0 44.7 82.9





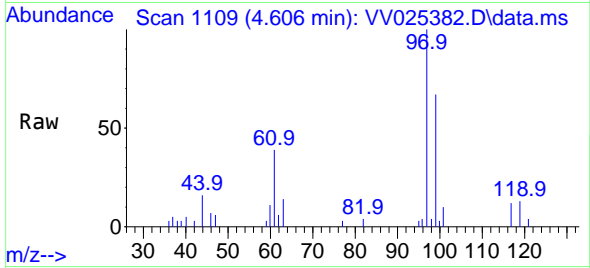
#29
 1,1,1-Trichloroethane
 Concen: 0.503 ug/L
 RT: 4.606 min Scan# 1109
 Delta R.T. 0.000 min
 Lab File: VV025382.D
 Acq: 07 Apr 2022 13:41

Instrument :

MSVOA_V

ClientSampleId :

BFY43

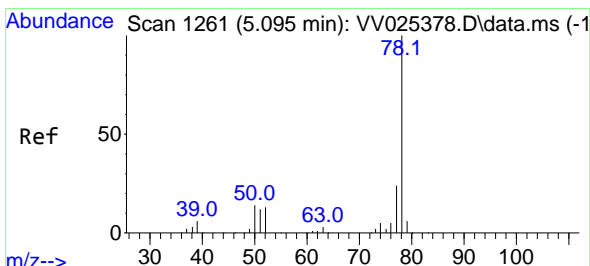
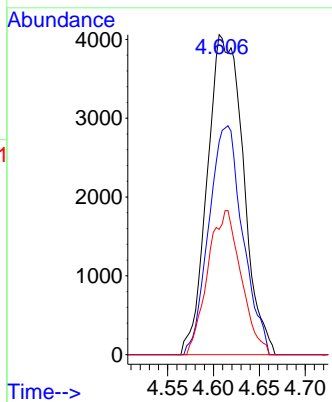
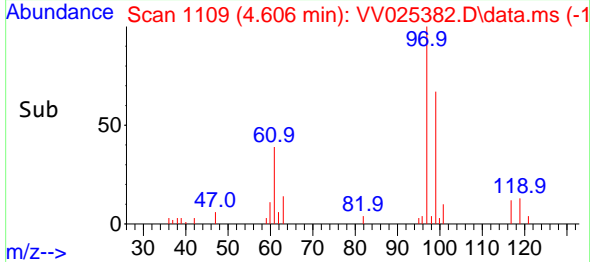


Tgt Ion: 97 Resp: 1106
 Ion Ratio Lower Upper
 97 100
 99 67.6 51.9 77.9
 61 41.8 34.2 51.2

Manual Integrations

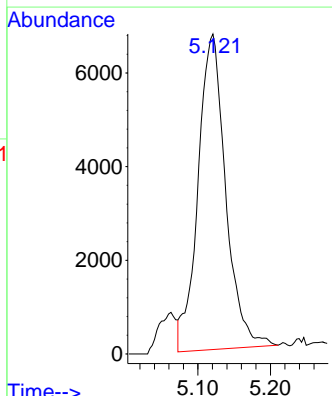
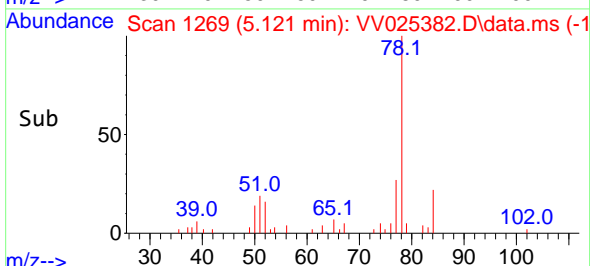
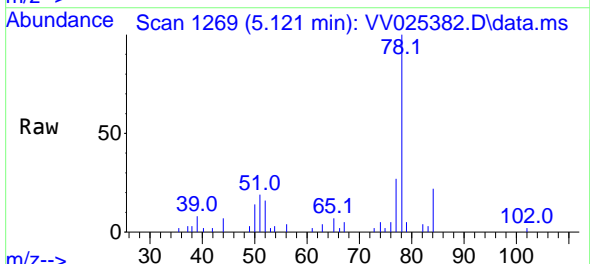
APPROVED

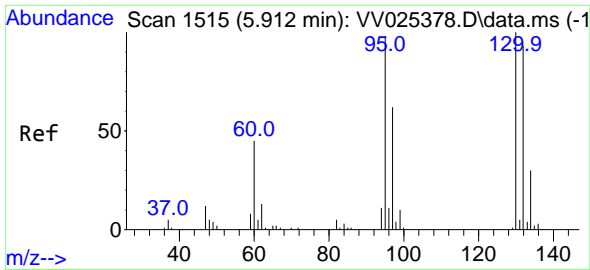
Reviewed By :John Carlone 04/08/2022
 Supervised By :Mahesh Dadoda 04/08/2022



#33
 Benzene
 Concen: 0.334 ug/L
 RT: 5.121 min Scan# 1269
 Delta R.T. 0.026 min
 Lab File: VV025382.D
 Acq: 07 Apr 2022 13:41

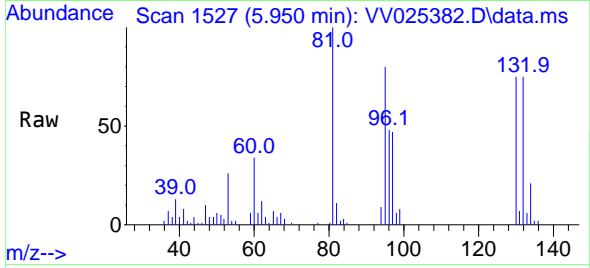
Tgt Ion: 78 Resp: 17840





#34
 Trichloroethene
 Concen: 1.377 ug/L
 RT: 5.950 min Scan# 11
 Delta R.T. 0.039 min
 Lab File: VV025382.D
 Acq: 07 Apr 2022 13:41

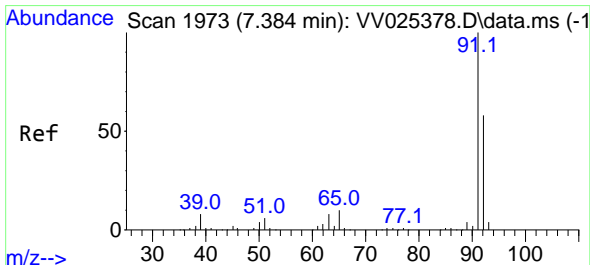
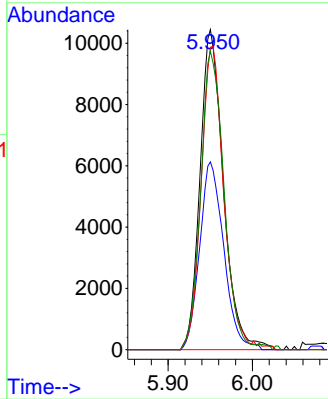
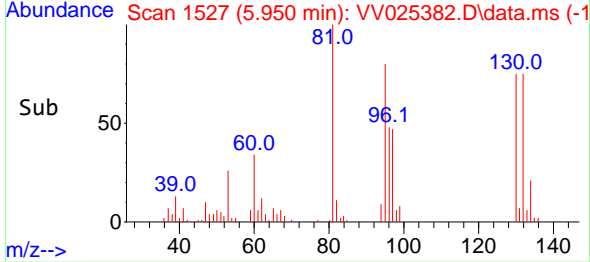
Instrument : MSVOA_V
 ClientSampleId : BFY43



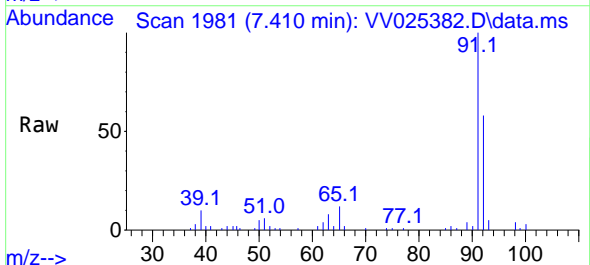
Tgt Ion: 95 Resp: 20174
 Ion Ratio Lower Upper
 95 100
 97 58.7 46.3 85.9
 132 94.5 65.2 121.2
 130 93.3 71.7 133.1

Manual Integrations
APPROVED

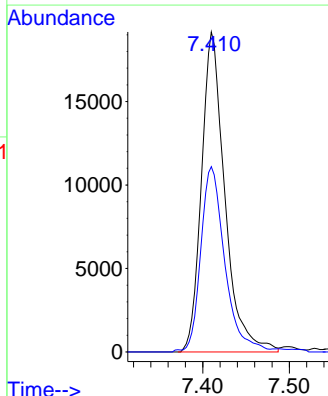
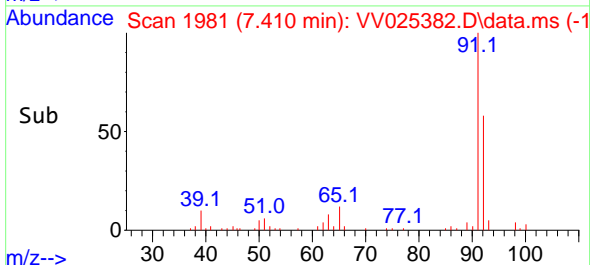
Reviewed By :John Carlone 04/08/2022
 Supervised By :Mahesh Dadoda 04/08/2022

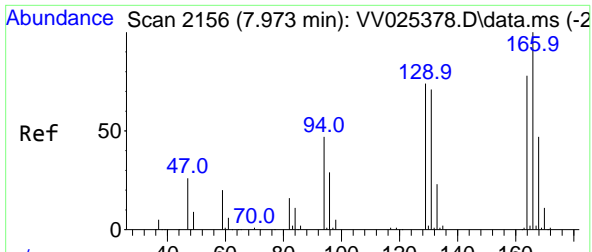


#42
 Toluene
 Concen: 0.631 ug/L
 RT: 7.410 min Scan# 1981
 Delta R.T. 0.026 min
 Lab File: VV025382.D
 Acq: 07 Apr 2022 13:41



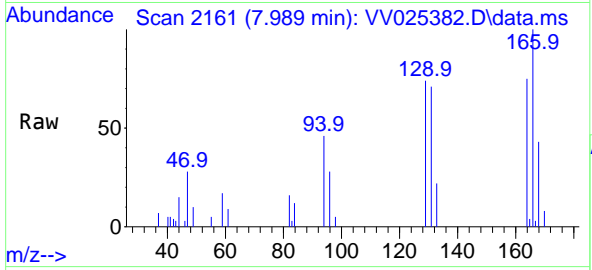
Tgt Ion: 91 Resp: 35913
 Ion Ratio Lower Upper
 91 100
 92 57.9 40.3 74.9





#47
 Tetrachloroethene
 Concen: 0.429 ug/L
 RT: 7.989 min Scan# 2161
 Delta R.T. 0.016 min
 Lab File: VV025382.D
 Acq: 07 Apr 2022 13:41

Instrument : MSVOA_V
 ClientSampleId : BFY43



Tgt Ion:164 Resp: 463

Ion	Ratio	Lower	Upper
164	100		
129	98.5	67.5	125.4
131	94.7	68.0	126.4
166	134.0	86.2	160.2

Manual Integrations
APPROVED
 Reviewed By :John Carlone 04/08/2022
 Supervised By :Mahesh Dadoda 04/08/2022

