

Data Path : Z:\VOASRV\HPCHEM1\MSVOA_V\DATA\VV041119\
 Data File : VV010275.D
 Acq On : 12 Apr 2019 06:41
 Operator : SY/MD
 Sample : K2328-08
 Misc : 2.11G/10mL/MSVOA_V/SOIL
 ALS Vial : 1 Sample Multiplier: 1

Instrument :
 MSVOA_V
 ClientSampleId :
 DB720

Quant Time: Apr 12 07:04:12 2019
 Quant Method : Z:\VOASRV\HPCHEM1\MSVOA_V\METHOD\SOM2VLM041019S.M
 Quant Title : VOC Analysis
 QLast Update : Fri Apr 12 04:45:26 2019
 Response via : Initial Calibration

Internal Standards	R.T.	QIon	Response	Conc	Units	Dev(Min)
1) 1,4-Difluorobenzene	5.66	114	237113	25.00	ug/L	0.00
28) Chlorobenzene-d5	8.89	117	233380	25.00	ug/L	0.00
60) 1,4-Dichlorobenzene-d4	11.30	152	96923	25.00	ug/L	0.00

System Monitoring Compounds

4) Vinyl Chloride-d3	1.31	65	30118	11.03	ug/L	0.00
Spiked Amount	25.000	Range	30 - 150	Recovery	=	44.12%
7) Chloroethane-d5	1.56	69	38161	16.27	ug/L	0.00
Spiked Amount	25.000	Range	30 - 150	Recovery	=	65.08%
10) 1,1-Dichloroethene-d2	2.12	63	69271	9.97	ug/L	-0.01
Spiked Amount	25.000	Range	45 - 110	Recovery	=	39.88%#
20) 2-Butanone-d5	3.93	46	45159	65.38	ug/L	0.00
Spiked Amount	50.000	Range	20 - 135	Recovery	=	130.76%
24) Chloroform-d	4.39	84	126762	23.41	ug/L	0.00
Spiked Amount	25.000	Range	40 - 150	Recovery	=	93.64%
26) 1,2-Dichloroethane-d4	5.08	65	84165	27.29	ug/L	0.00
Spiked Amount	25.000	Range	70 - 130	Recovery	=	109.16%
29) Benzene-d6	5.09	84	230363	20.47	ug/L	0.00
Spiked Amount	25.000	Range	20 - 135	Recovery	=	81.88%
33) 1,2-Dichloropropane-d6	6.11	67	80946	24.18	ug/L	0.00
Spiked Amount	25.000	Range	70 - 120	Recovery	=	96.72%
37) Toluene-d8	7.36	98	205115	18.69	ug/L	0.00
Spiked Amount	25.000	Range	30 - 130	Recovery	=	74.76%
38) trans-1,3-Dichloropropene-	7.66	79	30051	21.53	ug/L	0.00
Spiked Amount	25.000	Range	30 - 135	Recovery	=	86.12%
39) 2-Hexanone-d5	8.13	63	29906	51.73	ug/L	0.00
Spiked Amount	50.000	Range	20 - 135	Recovery	=	103.46%
48) 1,1,2,2-Tetrachloroethane-	10.26	84	80101	26.66	ug/L	0.00
Spiked Amount	25.000	Range	45 - 120	Recovery	=	106.64%
61) 1,2-Dichlorobenzene-d4	11.67	152	86684	24.22	ug/L	0.00
Spiked Amount	25.000	Range	75 - 120	Recovery	=	96.88%

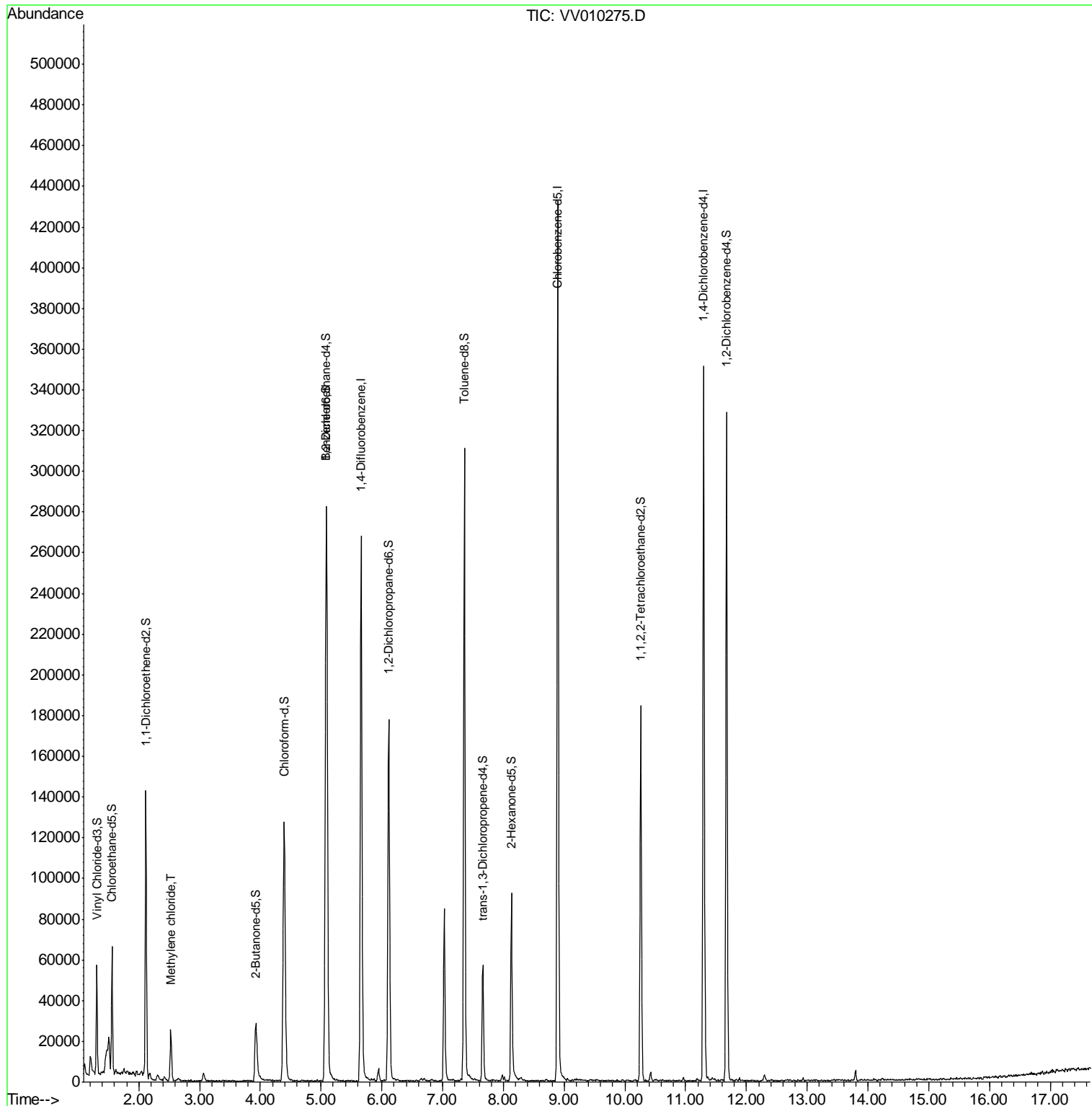
Target Compounds	R.T.	QIon	Response	Conc	Units	Qvalue
16) Methylene chloride	2.53	84	10166	2.189	ug/L	96

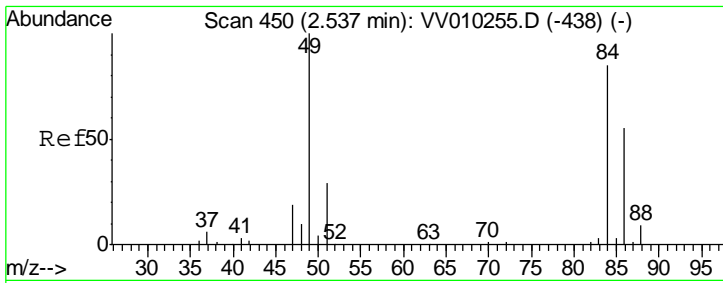
(#) = qualifier out of range (m) = manual integration (+) = signals summed

Data Path : Z:\VOASRV\HPCHEM1\MSVOA_V\DATA\VV041119\
 Data File : VV010275.D
 Acq On : 12 Apr 2019 06:41
 Operator : SY/MD
 Sample : K2328-08
 Misc : 2.11G/10mL/MSVOA_V/SOIL
 ALS Vial : 1 Sample Multiplier: 1

Instrument :
 MSVOA_V
 ClientSampled :
 DB720

Quant Time: Apr 12 07:04:12 2019
 Quant Method : Z:\VOASRV\HPCHEM1\MSVOA_V\METHOD\SOM2VLM041019S.M
 Quant Title : VOC Analysis
 QLast Update : Fri Apr 12 04:45:26 2019
 Response via : Initial Calibration





#16
 Methylene chloride
 Concen: 2.189 ug/L
 RT: 2.53 min Scan# 447
 Delta R.T. -0.01 min
 Lab File: VV010275.D
 Acq: 12 Apr 2019 06:41

Instrument :
 MSVOA_V
ClientSampled :
 DB720

Tgt Ion	Resp	Lower	Upper
84	10166		
49	120.8	79.9	148.5
86	64.2	44.5	82.7

