

Data Path : Z:\voasrv\HPCHEM1\MSVOA_V\Data\VV041322\
 Data File : VV025493.D
 Acq On : 13 Apr 2022 15:36
 Operator : SY/MD
 Sample : N2373-03
 Misc : 25mL/MSVOA_V/WATER
 ALS Vial : 8 Sample Multiplier: 1

Instrument :
 MSVOA_V
 ClientSampleId :
 BFFD6

Integration Parameters: rteint.p
 Integrator: RTE
 Smoothing : ON
 Sampling : 1
 Start Thrs : 0.1
 Stop Thrs : 0
 Filtering: 5
 Min Area: 3 % of largest Peak
 Max Peaks: 100
 Peak Location: TOP

If leading or trailing edge < 100 prefer < Baseline drop else tangent >
 Peak separation: 5

Method : Z:\voasrv\HPCHEM1\MSVOA_V\Method\SFAMVTR040822WMA.M
 Title : TRACE VOA SFAM1.0

Signal : TIC: VV025493.D\data.ms

peak #	R.T. min	first scan	max scan	last scan	PK TY	peak height	corr. area	corr. % max.	% of total
1	1.310	76	84	99	rVB	142989	145239	22.66%	2.826%
2	1.571	157	165	179	rVB	121385	138005	21.53%	2.685%
3	2.111	322	333	351	rBV	246906	358927	55.99%	6.983%
4	2.510	447	457	467	rBV2	7648	13828	2.16%	0.269%
5	3.043	612	623	637	rVB3	5151	10978	1.71%	0.214%
6	3.892	877	887	921	rBV	42401	158011	24.65%	3.074%
7	4.346	1007	1028	1052	rBV	114402	309301	48.25%	6.018%
8	5.043	1227	1245	1274	rBV3	256825	641052	100.00%	12.472%
9	5.613	1409	1422	1449	rBV	166708	347786	54.25%	6.767%
10	5.905	1504	1513	1524	rBV5	6793	13845	2.16%	0.269%
11	6.066	1546	1563	1588	rBV	143141	296679	46.28%	5.772%
12	6.982	1838	1848	1873	rBV	60227	115628	18.04%	2.250%
13	7.310	1939	1950	1968	rBV	308631	549260	85.68%	10.687%
14	7.391	1969	1975	1991	rVB2	8695	17178	2.68%	0.334%
15	7.622	2038	2047	2066	rBV	33728	61083	9.53%	1.188%
16	7.934	2136	2144	2156	rVB2	8277	13273	2.07%	0.258%
17	8.085	2182	2191	2233	rBV	192107	398601	62.18%	7.755%
18	8.847	2418	2428	2457	rBV	268445	451347	70.41%	8.782%
19	10.214	2841	2853	2870	rBV	79265	127730	19.93%	2.485%
20	10.378	2891	2904	2920	rVB2	24918	41906	6.54%	0.815%
21	11.149	3134	3144	3153	rBV8	4766	7433	1.16%	0.145%
22	11.246	3163	3174	3193	rBV	277364	432181	67.42%	8.409%
23	11.622	3279	3291	3307	rBV	272372	431246	67.27%	8.390%
24	12.249	3474	3486	3497	rBV2	10949	18095	2.82%	0.352%
25	12.342	3505	3515	3526	rBV4	20051	32230	5.03%	0.627%
26	14.037	4030	4042	4053	rBV	5195	8905	1.39%	0.173%

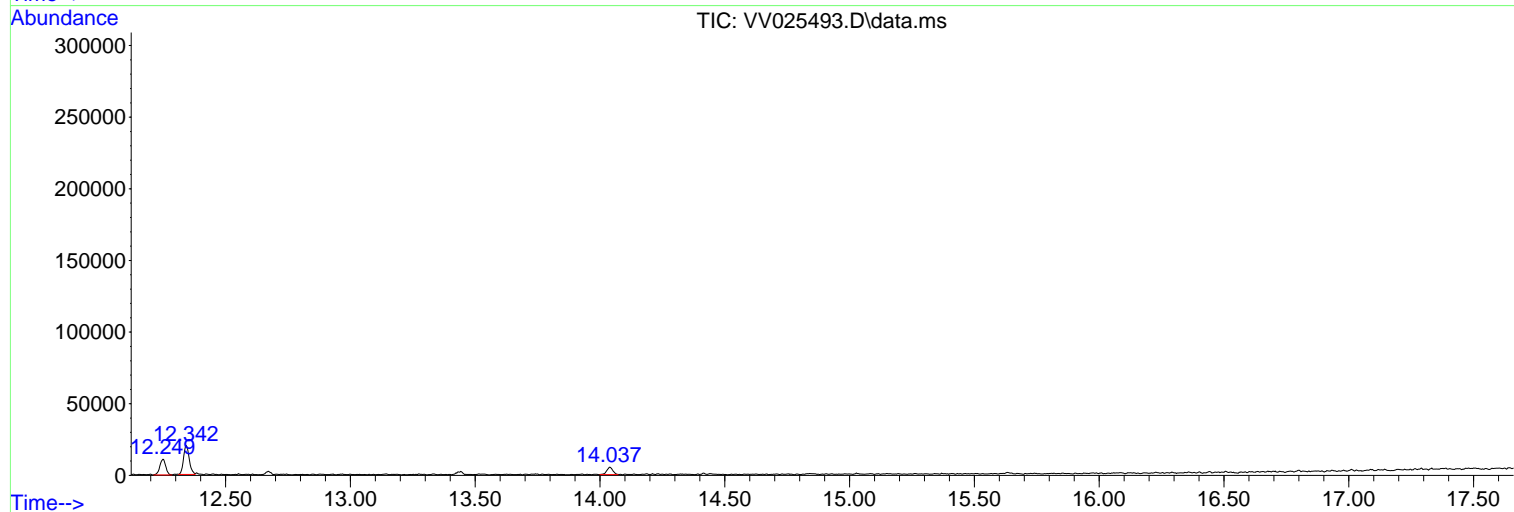
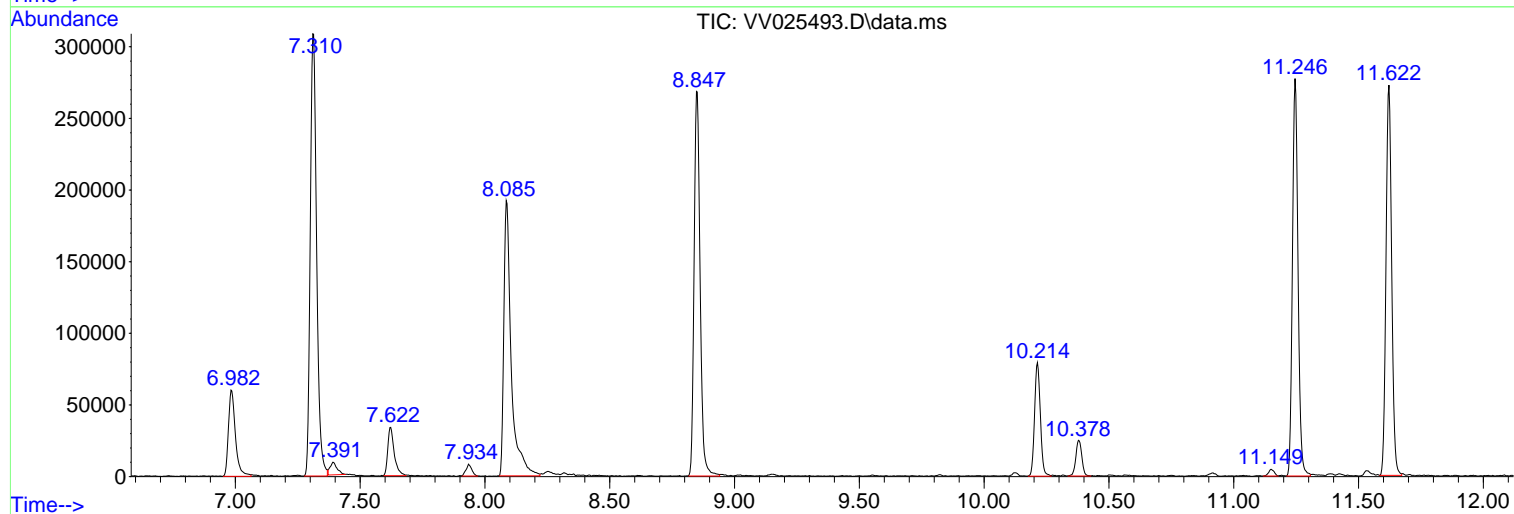
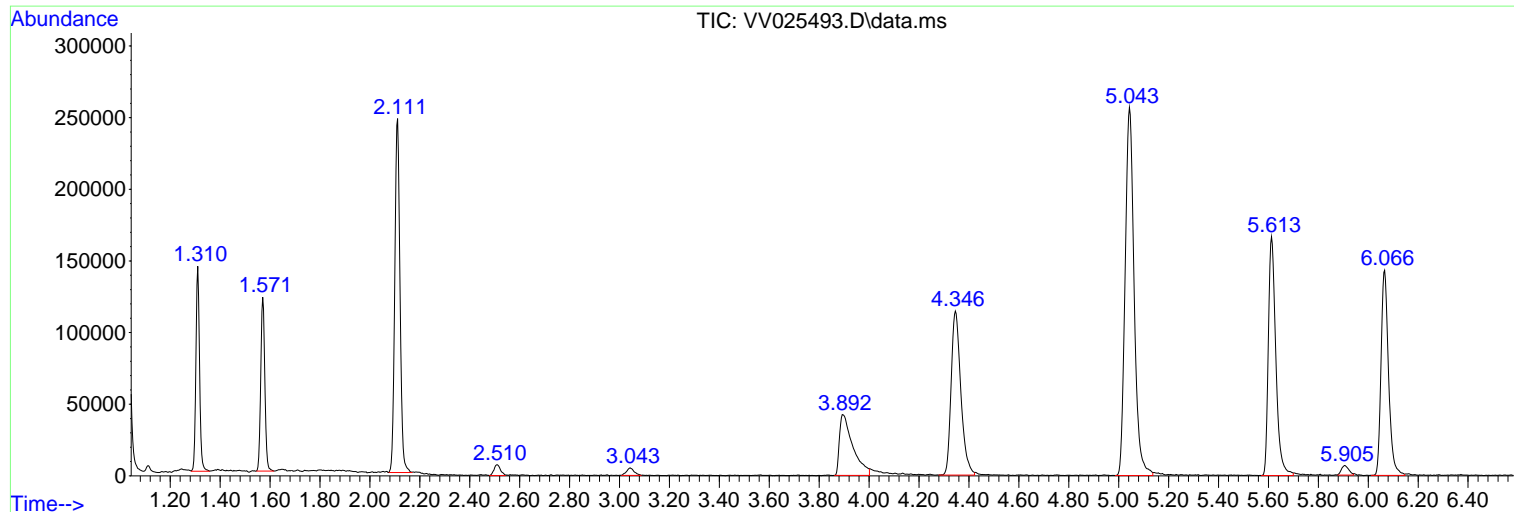
Sum of corrected areas: 5139747

Data Path : Z:\voasrv\HPCHEM1\MSVOA_V\Data\VV041322\
Data File : VV025493.D
Acq On : 13 Apr 2022 15:36
Operator : SY/MD
Sample : N2373-03
Misc : 25mL/MSVOA_V/WATER
ALS Vial : 8 Sample Multiplier: 1

Instrument :
MSVOA_V
ClientSampleId :
BFFD6

Quant Method : Z:\voasrv\HPCHEM1\MSVOA_V\Method\SFAMVTR040822WMA.M
Quant Title : TRACE VOA SFAM1.0

TIC Library : C:\Database\NIST20.L
TIC Integration Parameters: LSCINT.P



Library Search Compound Report

Data Path : Z:\voasrv\HPCHEM1\MSVOA_V\Data\VV041322\
Data File : VV025493.D
Acq On : 13 Apr 2022 15:36
Operator : SY/MD
Sample : N2373-03
Misc : 25mL/MSVOA_V/WATER
ALS Vial : 8 Sample Multiplier: 1

Instrument :
MSVOA_V
ClientSampleId :
BFFD6

Quant Method : Z:\voasrv\HPCHEM1\MSVOA_V\Method\SFAMVTR040822WMA.M
Quant Title : TRACE VOA SFAM1.0

TIC Library : C:\Database\NIST20.L
TIC Integration Parameters: LSCINT.P

No Library Search Compounds Detected

Data Path : Z:\voasrv\HPCHEM1\MSVOA_V\Data\VW041322\
Data File : VW025493.D
Acq On : 13 Apr 2022 15:36
Operator : SY/MD
Sample : N2373-03
Misc : 25mL/MSVOA_V/WATER
ALS Vial : 8 Sample Multiplier: 1

Instrument :
MSVOA_V
ClientSampleId :
BFFD6

Quant Method : Z:\voasrv\HPCHEM1\MSVOA_V\Method\SFAMVTR040822WMA.M
Quant Title : TRACE VOA SFAM1.0

TIC Library : C:\Database\NIST0.L
TIC Integration Parameters: LSCINT.P

TIC Top Hit name	RT	EstConc	Units	Response	--Internal Standard--			
					#	RT	Resp	Conc
