

Data Path : Z:\voasrv\HPCHEM1\MSVOA_V\Data\VW041422\
 Data File : VW025536.D
 Acq On : 14 Apr 2022 11:22
 Operator : SY/MD
 Sample : N2356-16
 Misc : 25mL/MSVOA_V/WATER
 ALS Vial : 6 Sample Multiplier: 1

Instrument :
 MSVOA_V
 ClientSampleId :
 GBDT4

Quant Time: Apr 15 07:21:15 2022
 Quant Method : Z:\voasrv\HPCHEM1\MSVOA_V\Method\SFAMVTR040822WMA.M
 Quant Title : TRACE VOA SFAM1.0
 QLast Update : Fri Apr 15 07:05:00 2022
 Response via : Initial Calibration

Compound	R.T.	QIon	Response	Conc	Units	Dev(Min)

Internal Standards						
1) 1,4-Difluorobenzene	5.619	114	123289	5.000	ug/L	0.00
28) Chlorobenzene-d5	8.854	117	124788	5.000	ug/L	0.00
58) 1,4-Dichlorobenzene-d4	11.249	152	56324	5.000	ug/L	0.00
System Monitoring Compounds						
4) Vinyl Chloride-d3	1.310	65	63698	5.557	ug/L	0.00
Spiked Amount	5.000	Range 40 - 130	Recovery	=	111.200%	
7) Chloroethane-d5	1.574	69	58457	4.794	ug/L	0.00
Spiked Amount	5.000	Range 65 - 130	Recovery	=	95.800%	
11) 1,1-Dichloroethene-d2	2.114	63	97783	4.259	ug/L	0.00
Spiked Amount	5.000	Range 60 - 125	Recovery	=	85.200%	
20) 2-Butanone-d5	3.899	46	77549	55.620	ug/L	0.00
Spiked Amount	50.000	Range 40 - 130	Recovery	=	111.240%	
24) Chloroform-d	4.352	84	94719	5.469	ug/L	0.00
Spiked Amount	5.000	Range 70 - 125	Recovery	=	109.400%	
26) 1,2-Dichloroethane-d4	5.037	65	44582	5.974	ug/L	0.00
Spiked Amount	5.000	Range 70 - 130	Recovery	=	119.400%	
32) Benzene-d6	5.053	84	193150	5.350	ug/L	0.00
Spiked Amount	5.000	Range 70 - 125	Recovery	=	107.000%	
36) 1,2-Dichloropropane-d6	6.072	67	55661	5.528	ug/L	0.00
Spiked Amount	5.000	Range 60 - 140	Recovery	=	110.600%	
41) Toluene-d8	7.317	98	165078	4.927	ug/L	0.00
Spiked Amount	5.000	Range 70 - 130	Recovery	=	98.600%	
43) trans-1,3-Dichloroprop...	7.625	79	16023	4.734	ug/L	0.00
Spiked Amount	5.000	Range 55 - 130	Recovery	=	94.600%	
46) 2-Hexanone-d5	8.088	63	59194	49.833	ug/L	0.00
Spiked Amount	50.000	Range 45 - 130	Recovery	=	99.660%	
56) 1,1,2,2-Tetrachloroeth...	10.217	84	34388	5.406	ug/L	0.00
Spiked Amount	5.000	Range 65 - 120	Recovery	=	108.200%	
66) 1,2-Dichlorobenzene-d4	11.622	152	52762	5.587	ug/L	0.00
Spiked Amount	5.000	Range 80 - 120	Recovery	=	111.800%	

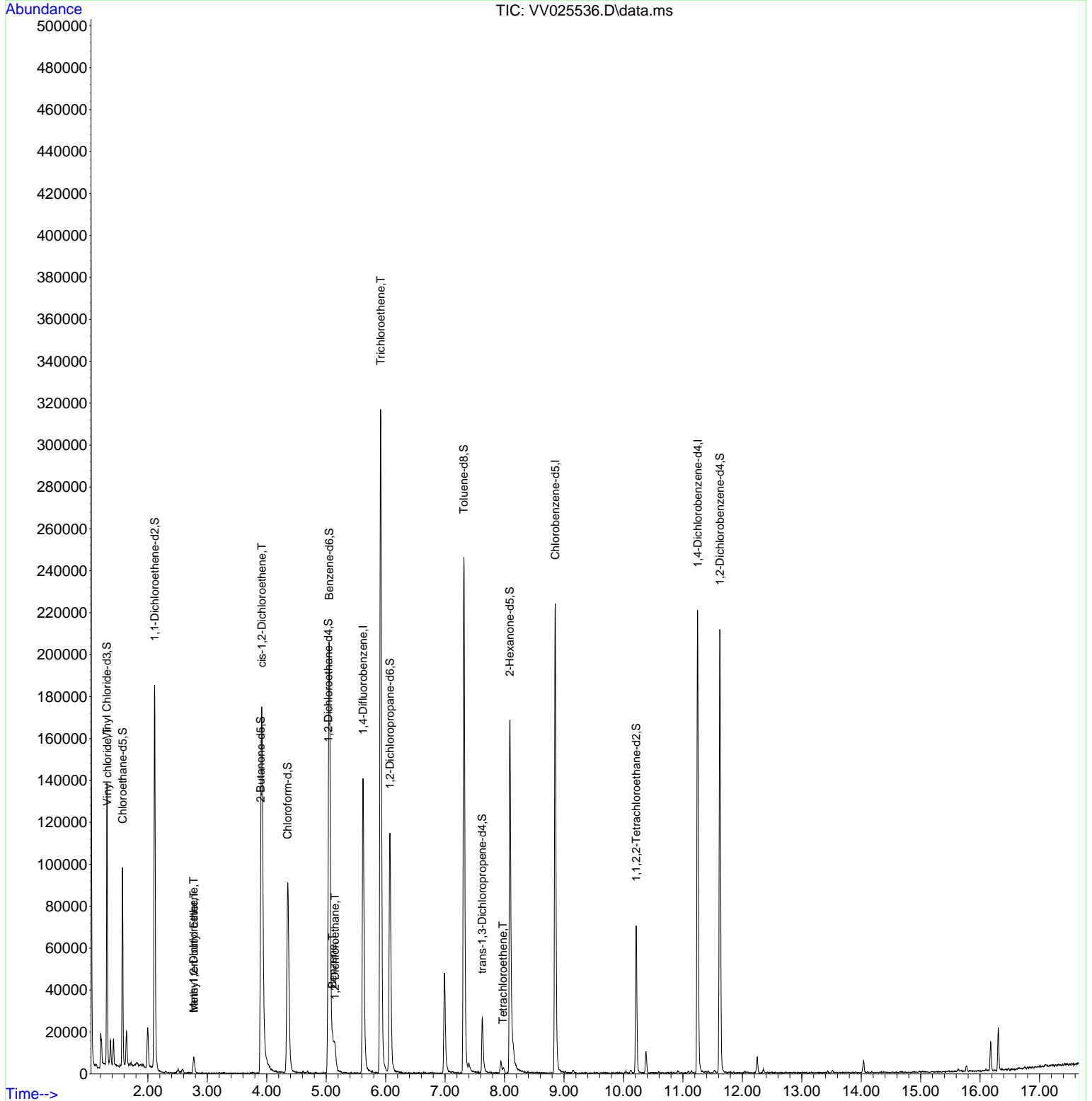
Target Compounds						Qvalue
5) Vinyl chloride	1.317	62	2425	0.177	ug/L #	49
17) Methyl tert-butyl Ether	2.773	73	2517	0.152	ug/L #	72
18) trans-1,2-Dichloroethene	2.770	96	1696	0.189	ug/L	87
22) cis-1,2-Dichloroethene	3.918	96	82750	8.772	ug/L	96
27) 1,2-Dichloroethane	5.146	62	11625	1.375	ug/L	97
33) Benzene	5.108	78	14914	0.405	ug/L	100
34) Trichloroethene	5.915	95	108960	11.132	ug/L	98
47) Tetrachloroethene	7.976	164	603	0.079	ug/L	93

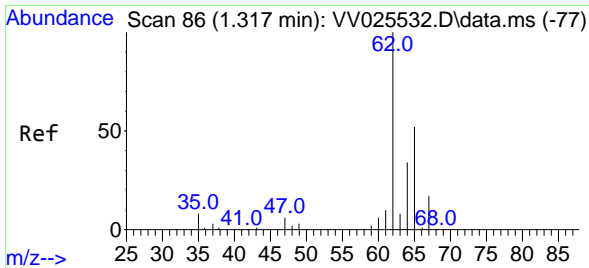
(#) = qualifier out of range (m) = manual integration (+) = signals summed

Data Path : Z:\voasrv\HPCHEM1\MSVOA_V\Data\VV041422\
 Data File : VV025536.D
 Acq On : 14 Apr 2022 11:22
 Operator : SY/MD
 Sample : N2356-16
 Misc : 25mL/MSVOA_V/WATER
 ALS Vial : 6 Sample Multiplier: 1

Instrument :
 MSVOA_V
 ClientSampleId :
 GBDT4

Quant Time: Apr 15 07:21:15 2022
 Quant Method : Z:\voasrv\HPCHEM1\MSVOA_V\Method\SFAMVTR040822WMA.M
 Quant Title : TRACE VOA SFAM1.0
 QLast Update : Fri Apr 15 07:05:00 2022
 Response via : Initial Calibration

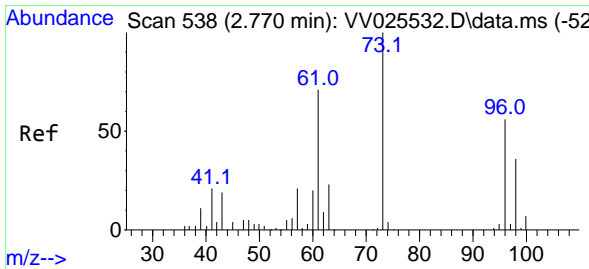
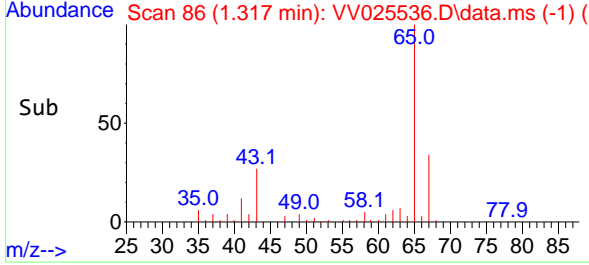
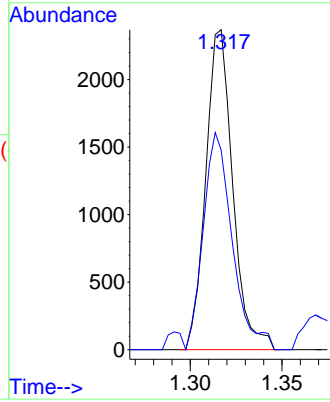
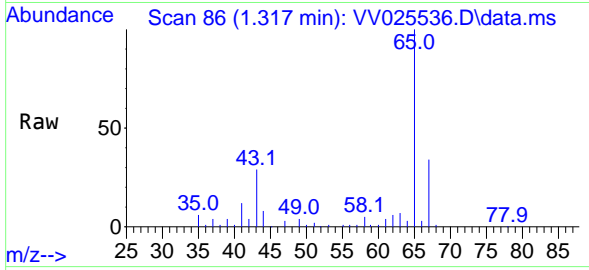




#5
 Vinyl chloride
 Concen: 0.177 ug/L
 RT: 1.317 min Scan# 80
 Delta R.T. -0.000 min
 Lab File: VV025536.D
 Acq: 14 Apr 2022 11:22

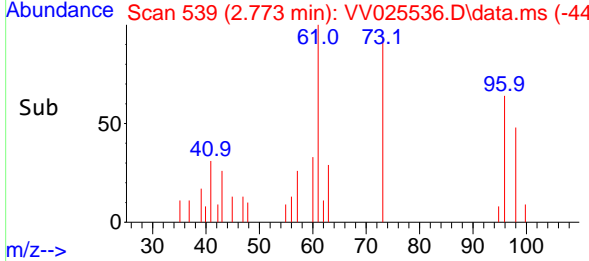
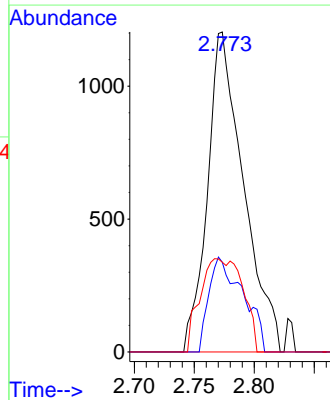
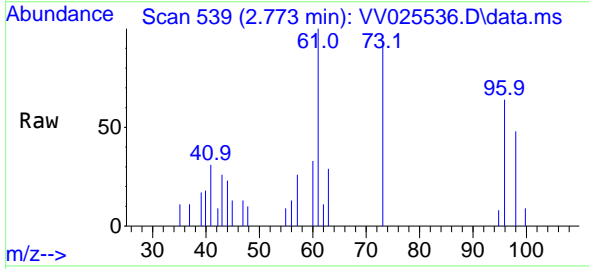
Instrument : MSVOA_V
 ClientSampleId : GBDT4

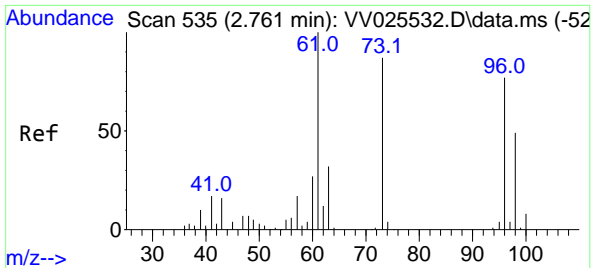
Tgt Ion: 62 Resp: 2425
 Ion Ratio Lower Upper
 62 100
 64 62.3 23.2 43.2#



#17
 Methyl tert-butyl Ether
 Concen: 0.152 ug/L
 RT: 2.773 min Scan# 539
 Delta R.T. 0.003 min
 Lab File: VV025536.D
 Acq: 14 Apr 2022 11:22

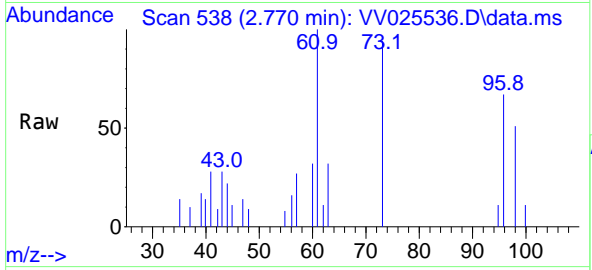
Tgt Ion: 73 Resp: 2517
 Ion Ratio Lower Upper
 73 100
 43 28.0 14.2 21.4#
 57 34.5 16.1 24.1#





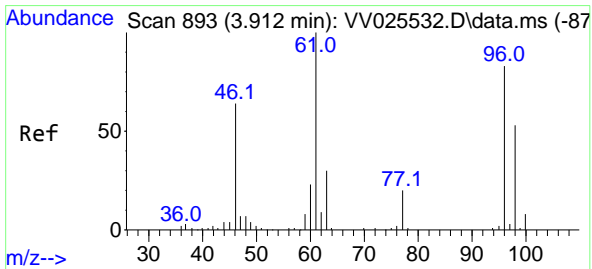
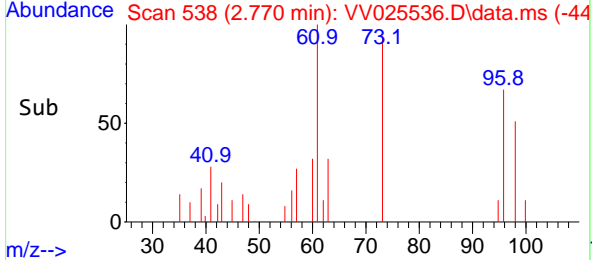
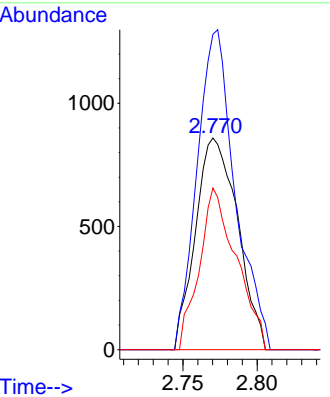
#18
 trans-1,2-Dichloroethene
 Concen: 0.189 ug/L
 RT: 2.770 min Scan# 511
 Delta R.T. 0.010 min
 Lab File: VV025536.D
 Acq: 14 Apr 2022 11:22

Instrument : MSVOA_V
 ClientSampleId : GBDT4

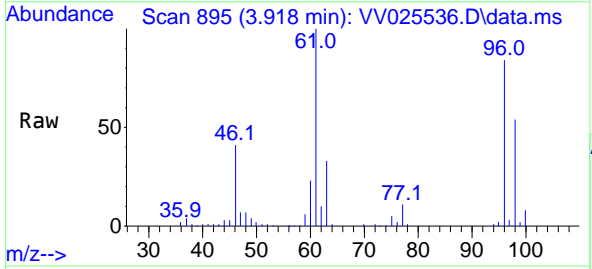


Tgt Ion: 96 Resp: 1696

Ion	Ratio	Lower	Upper
96	100		
61	149.0	92.1	171.1
98	76.4	47.5	88.1

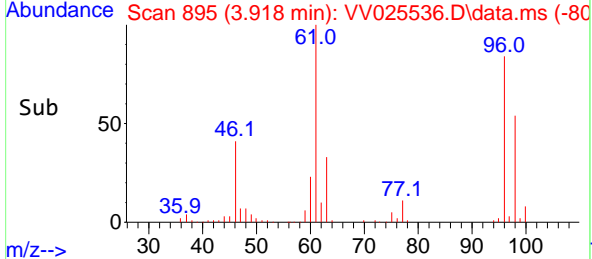
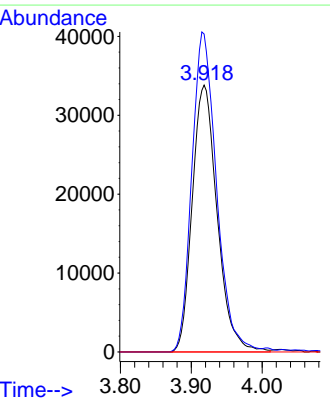


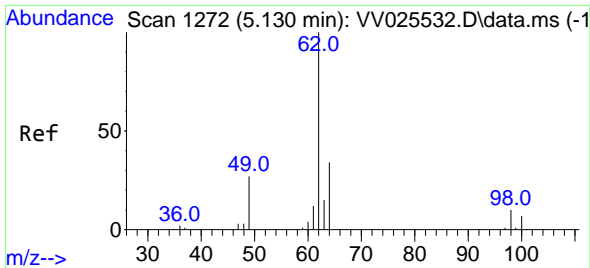
#22
 cis-1,2-Dichloroethene
 Concen: 8.772 ug/L
 RT: 3.918 min Scan# 895
 Delta R.T. 0.006 min
 Lab File: VV025536.D
 Acq: 14 Apr 2022 11:22



Tgt Ion: 96 Resp: 82750

Ion	Ratio	Lower	Upper
96	100		
61	119.1	80.0	148.6
68	0.0	0.0	0.0

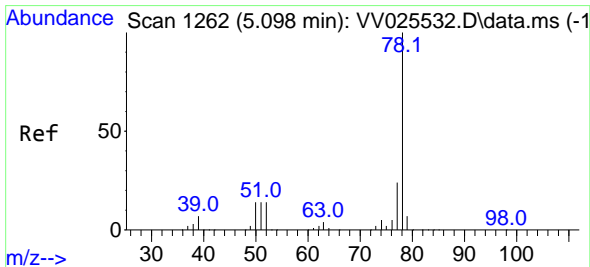
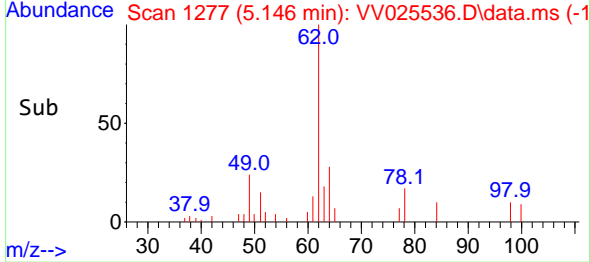
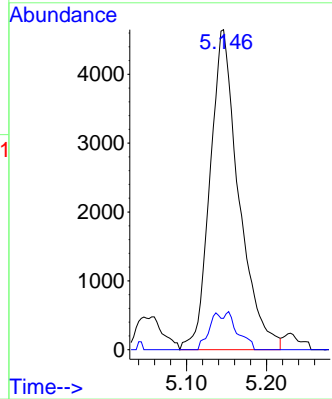
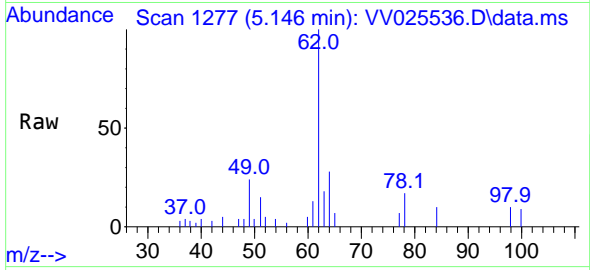




#27
 1,2-Dichloroethane
 Concen: 1.375 ug/L
 RT: 5.146 min Scan# 11625
 Delta R.T. 0.016 min
 Lab File: VV025536.D
 Acq: 14 Apr 2022 11:22

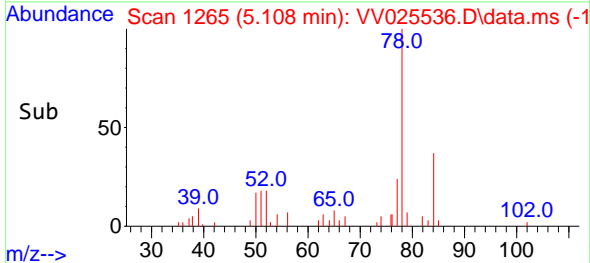
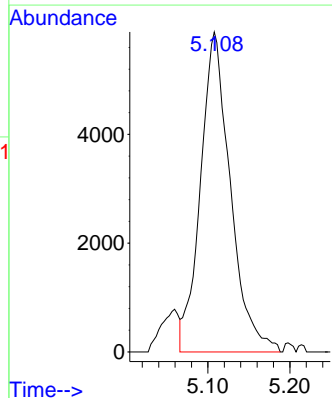
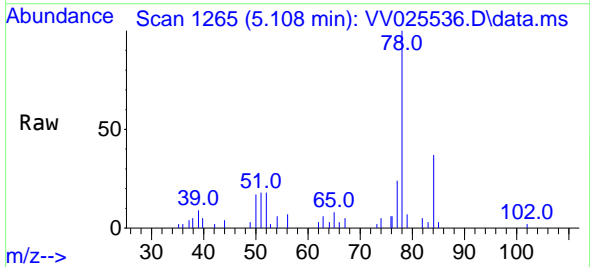
Instrument : MSVOA_V
 ClientSampleId : GBDT4

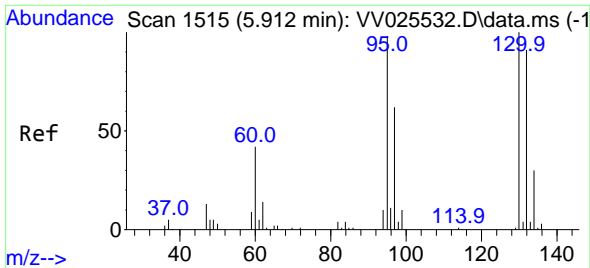
Tgt Ion: 62 Resp: 11625
 Ion Ratio Lower Upper
 62 100
 98 9.8 8.8 13.2



#33
 Benzene
 Concen: 0.405 ug/L
 RT: 5.108 min Scan# 1265
 Delta R.T. 0.010 min
 Lab File: VV025536.D
 Acq: 14 Apr 2022 11:22

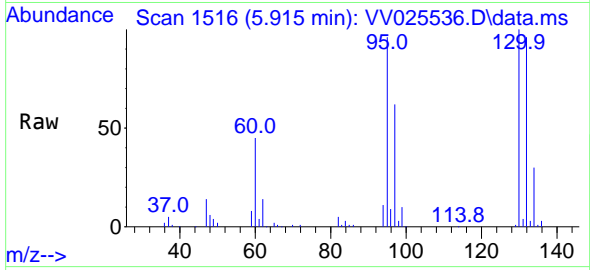
Tgt Ion: 78 Resp: 14914



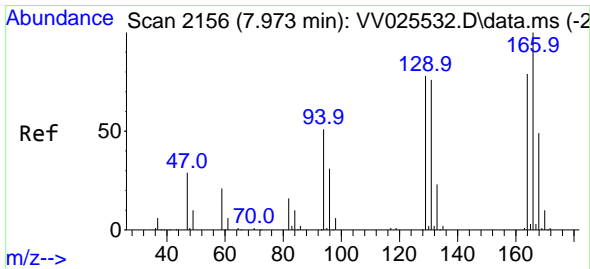
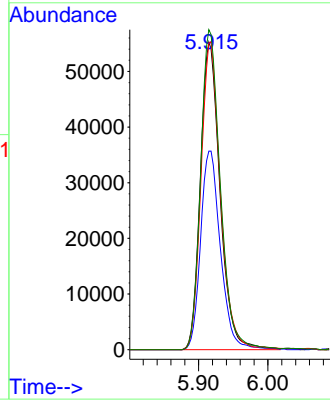
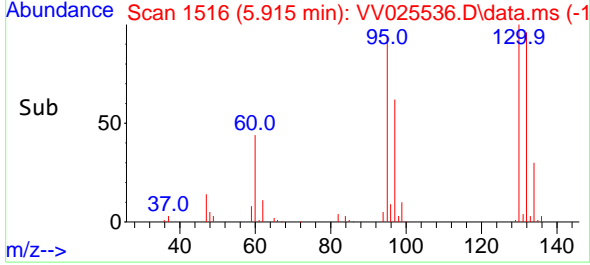


#34
 Trichloroethene
 Concen: 11.132 ug/L
 RT: 5.915 min Scan# 1516
 Delta R.T. 0.003 min
 Lab File: VV025536.D
 Acq: 14 Apr 2022 11:22

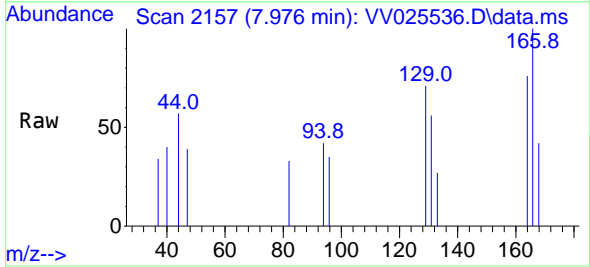
Instrument : MSVOA_V
 ClientSampleId : GBDT4



Tgt Ion: 95 Resp: 108960
 Ion Ratio Lower Upper
 95 100
 97 64.6 45.8 85.2
 132 99.7 68.0 126.4
 130 104.0 71.9 133.5



#47
 Tetrachloroethene
 Concen: 0.079 ug/L
 RT: 7.976 min Scan# 2157
 Delta R.T. 0.003 min
 Lab File: VV025536.D
 Acq: 14 Apr 2022 11:22



Tgt Ion: 164 Resp: 603
 Ion Ratio Lower Upper
 164 100
 129 94.4 66.8 124.2
 131 73.8 66.4 123.4
 166 132.2 91.7 170.3

