

Data Path : Z:\VOASRV\HPCHEM1\MSVOA V\DATA\VV042219\  
 Data File : VV010441.D  
 Acq On : 23 Apr 2019 07:18  
 Operator : SY/MD  
 Sample : K2481-05  
 Misc : 5.09G/10mL/MSVOA V/SOIL  
 ALS Vial : 1 Sample Multiplier: 1

Instrument :  
 MSVOA\_V  
 ClientSampleId :  
 GAHW0

Integration Parameters: LSCINT.P

Integrator: RTE  
 Smoothing : OFF  
 Sampling : 1  
 Start Thrs: 0.2  
 Stop Thrs : 0

Filtering: 5  
 Min Area: 0 % of largest Peak  
 Max Peaks: 100  
 Peak Location: TOP

If leading or trailing edge < 100 prefer < Baseline drop else tangent >  
 Peak separation: 5

Method : Z:\VOASRV\HPCHEM1\MSVOA\_V\METHOD\SOM2VLM042219S.M  
 Title : VOC Analysis

Signal : TIC

| peak # | R.T. min | first scan | max scan | last scan | PK TY | peak height | corr. area | corr. % max. | % of total |
|--------|----------|------------|----------|-----------|-------|-------------|------------|--------------|------------|
| 1      | 1.312    | 64         | 69       | 78        | rVB   | 108283      | 111103     | 9.54%        | 1.244%     |
| 2      | 1.573    | 144        | 150      | 164       | rVB   | 97207       | 120944     | 10.39%       | 1.354%     |
| 3      | 2.119    | 310        | 320      | 333       | rVB   | 208062      | 308220     | 26.48%       | 3.451%     |
| 4      | 2.184    | 333        | 340      | 351       | rVB3  | 9323        | 16151      | 1.39%        | 0.181%     |
| 5      | 2.225    | 351        | 353      | 357       | rBV3  | 1040        | 581        | 0.05%        | 0.007%     |
| 6      | 2.299    | 369        | 376      | 384       | rBV   | 6697        | 10794      | 0.93%        | 0.121%     |
| 7      | 2.441    | 417        | 420      | 422       | rBV3  | 555         | 401        | 0.03%        | 0.004%     |
| 8      | 2.531    | 437        | 448      | 464       | rVB3  | 24676       | 43796      | 3.76%        | 0.490%     |
| 9      | 2.614    | 471        | 474      | 475       | rBV   | 802         | 414        | 0.04%        | 0.005%     |
| 10     | 2.647    | 477        | 484      | 496       | rVB4  | 3575        | 7188       | 0.62%        | 0.080%     |
| 11     | 2.692    | 496        | 498      | 503       | rBV2  | 451         | 370        | 0.03%        | 0.004%     |
| 12     | 2.791    | 524        | 529      | 531       | rBV3  | 514         | 414        | 0.04%        | 0.005%     |
| 13     | 2.975    | 582        | 586      | 588       | rBV2  | 386         | 333        | 0.03%        | 0.004%     |
| 14     | 2.994    | 590        | 592      | 596       | rVB   | 515         | 291        | 0.02%        | 0.003%     |
| 15     | 3.071    | 607        | 616      | 628       | rVB4  | 3534        | 7237       | 0.62%        | 0.081%     |
| 16     | 3.177    | 645        | 649      | 651       | rBV   | 584         | 270        | 0.02%        | 0.003%     |
| 17     | 3.206    | 656        | 658      | 664       | rVB3  | 459         | 409        | 0.04%        | 0.005%     |
| 18     | 3.241    | 664        | 669      | 671       | rBV2  | 625         | 458        | 0.04%        | 0.005%     |
| 19     | 3.370    | 705        | 709      | 714       | rBV2  | 486         | 541        | 0.05%        | 0.006%     |
| 20     | 3.643    | 792        | 794      | 797       | rBV   | 337         | 245        | 0.02%        | 0.003%     |
| 21     | 3.704    | 811        | 813      | 815       | rBV   | 493         | 236        | 0.02%        | 0.003%     |
| 22     | 3.827    | 849        | 851      | 853       | rBV   | 435         | 238        | 0.02%        | 0.003%     |
| 23     | 3.926    | 871        | 882      | 906       | rBV2  | 32779       | 89138      | 7.66%        | 0.998%     |
| 24     | 4.254    | 981        | 984      | 985       | rBV   | 474         | 259        | 0.02%        | 0.003%     |
| 25     | 4.396    | 1009       | 1028     | 1053      | rBV2  | 199178      | 505413     | 43.42%       | 5.659%     |
| 26     | 4.785    | 1145       | 1149     | 1151      | rBV2  | 484         | 285        | 0.02%        | 0.003%     |
| 27     | 4.810    | 1154       | 1157     | 1160      | rVB2  | 871         | 552        | 0.05%        | 0.006%     |
| 28     | 4.856    | 1166       | 1171     | 1172      | rBV   | 426         | 257        | 0.02%        | 0.003%     |
| 29     | 4.942    | 1195       | 1198     | 1201      | rBV2  | 399         | 298        | 0.03%        | 0.003%     |
| 30     | 5.007    | 1216       | 1218     | 1224      | rVB3  | 277         | 298        | 0.03%        | 0.003%     |
| 31     | 5.090    | 1224       | 1244     | 1274      | rBV2  | 442916      | 1109600    | 95.32%       | 12.424%    |
| 32     | 5.405    | 1340       | 1342     | 1346      | rBV4  | 909         | 633        | 0.05%        | 0.007%     |
| 33     | 5.505    | 1370       | 1373     | 1376      | rBV3  | 757         | 568        | 0.05%        | 0.006%     |
| 34     | 5.534    | 1381       | 1382     | 1387      | rVB3  | 695         | 414        | 0.04%        | 0.005%     |

Data Path : Z:\VOASRV\HPCHEM1\MSVOA V\DATA\VV042219\  
 Data File : VV010441.D  
 Acq On : 23 Apr 2019 07:18  
 Operator : SY/MD  
 Sample : K2481-05  
 Misc : 5.09G/10mL/MSVOA V/SOIL  
 ALS Vial : 1 Sample Multiplier: 1

Instrument :  
 MSVOA\_V  
 ClientSampleId :  
 GAHW0

## Integration Parameters: LSCINT.P

Integrator: RTE  
 Smoothing : OFF  
 Sampling : 1  
 Start Thrs: 0.2  
 Stop Thrs : 0

Filtering: 5  
 Min Area: 0 % of largest Peak  
 Max Peaks: 100  
 Peak Location: TOP

If leading or trailing edge < 100 prefer < Baseline drop else tangent >  
 Peak separation: 5

Method : Z:\VOASRV\HPCHEM1\MSVOA\_V\METHOD\SOM2VLM042219S.M  
 Title : VOC Analysis

|    |       |      |      |      |      |        |         |         |         |
|----|-------|------|------|------|------|--------|---------|---------|---------|
| 35 | 5.569 | 1390 | 1393 | 1395 | rBV2 | 727    | 455     | 0.04%   | 0.005%  |
| 36 | 5.659 | 1404 | 1421 | 1440 | rBV  | 489017 | 966547  | 83.03%  | 10.823% |
| 37 | 5.942 | 1501 | 1509 | 1520 | rBV7 | 4832   | 9309    | 0.80%   | 0.104%  |
| 38 | 6.113 | 1547 | 1562 | 1586 | rBV  | 266451 | 535173  | 45.98%  | 5.992%  |
| 39 | 6.341 | 1628 | 1633 | 1637 | rBV2 | 818    | 695     | 0.06%   | 0.008%  |
| 40 | 6.363 | 1637 | 1640 | 1641 | rBV2 | 486    | 251     | 0.02%   | 0.003%  |
| 41 | 6.418 | 1654 | 1657 | 1660 | rVB2 | 433    | 254     | 0.02%   | 0.003%  |
| 42 | 6.437 | 1660 | 1663 | 1666 | rBV  | 619    | 418     | 0.04%   | 0.005%  |
| 43 | 6.643 | 1724 | 1727 | 1728 | rBV2 | 742    | 472     | 0.04%   | 0.005%  |
| 44 | 6.740 | 1754 | 1757 | 1761 | rBV2 | 518    | 325     | 0.03%   | 0.004%  |
| 45 | 6.794 | 1770 | 1774 | 1776 | rBV2 | 633    | 488     | 0.04%   | 0.005%  |
| 46 | 6.900 | 1805 | 1807 | 1810 | rVB2 | 401    | 247     | 0.02%   | 0.003%  |
| 47 | 6.920 | 1810 | 1813 | 1814 | rBV2 | 438    | 246     | 0.02%   | 0.003%  |
| 48 | 6.958 | 1820 | 1825 | 1830 | rBV2 | 601    | 604     | 0.05%   | 0.007%  |
| 49 | 7.026 | 1833 | 1846 | 1867 | rBV  | 123744 | 228186  | 19.60%  | 2.555%  |
| 50 | 7.299 | 1923 | 1931 | 1935 | rBV5 | 935    | 1229    | 0.11%   | 0.014%  |
| 51 | 7.357 | 1936 | 1949 | 1966 | rBV  | 508847 | 891679  | 76.60%  | 9.984%  |
| 52 | 7.662 | 2031 | 2044 | 2062 | rBV2 | 76860  | 133542  | 11.47%  | 1.495%  |
| 53 | 7.981 | 2133 | 2143 | 2150 | rBV3 | 4146   | 6148    | 0.53%   | 0.069%  |
| 54 | 8.132 | 2180 | 2190 | 2213 | rBV  | 97066  | 193018  | 16.58%  | 2.161%  |
| 55 | 8.389 | 2265 | 2270 | 2273 | rBV2 | 608    | 674     | 0.06%   | 0.008%  |
| 56 | 8.418 | 2276 | 2279 | 2283 | rVV2 | 472    | 344     | 0.03%   | 0.004%  |
| 57 | 8.470 | 2293 | 2295 | 2300 | rVB2 | 599    | 337     | 0.03%   | 0.004%  |
| 58 | 8.653 | 2348 | 2352 | 2356 | rBV2 | 929    | 532     | 0.05%   | 0.006%  |
| 59 | 8.695 | 2361 | 2365 | 2366 | rBV  | 675    | 386     | 0.03%   | 0.004%  |
| 60 | 8.778 | 2390 | 2391 | 2396 | rVB  | 916    | 388     | 0.03%   | 0.004%  |
| 61 | 8.804 | 2396 | 2399 | 2404 | rBV  | 613    | 561     | 0.05%   | 0.006%  |
| 62 | 8.894 | 2412 | 2427 | 2453 | rBV  | 687194 | 1164030 | 100.00% | 13.034% |
| 63 | 9.051 | 2473 | 2476 | 2483 | rVB4 | 1137   | 996     | 0.09%   | 0.011%  |
| 64 | 9.170 | 2509 | 2513 | 2515 | rBV2 | 877    | 673     | 0.06%   | 0.008%  |
| 65 | 9.270 | 2540 | 2544 | 2547 | rBV2 | 861    | 660     | 0.06%   | 0.007%  |
| 66 | 9.305 | 2553 | 2555 | 2558 | rBV2 | 491    | 342     | 0.03%   | 0.004%  |
| 67 | 9.386 | 2576 | 2580 | 2584 | rBV2 | 391    | 245     | 0.02%   | 0.003%  |
| 68 | 9.408 | 2584 | 2587 | 2590 | rBV2 | 436    | 262     | 0.02%   | 0.003%  |
| 69 | 9.521 | 2620 | 2622 | 2624 | rBV  | 461    | 266     | 0.02%   | 0.003%  |
| 70 | 9.579 | 2637 | 2640 | 2645 | rBV4 | 779    | 663     | 0.06%   | 0.007%  |
| 71 | 9.949 | 2748 | 2755 | 2758 | rBV4 | 1240   | 1437    | 0.12%   | 0.016%  |

Data Path : Z:\VOASRV\HPCHEM1\MSVOA V\DATA\VV042219\  
 Data File : VV010441.D  
 Acq On : 23 Apr 2019 07:18  
 Operator : SY/MD  
 Sample : K2481-05  
 Misc : 5.09G/10mL/MSVOA V/SOIL  
 ALS Vial : 1 Sample Multiplier: 1

Instrument :  
 MSVOA\_V  
 ClientSampleId :  
 GAHW0

## Integration Parameters: LSCINT.P

Integrator: RTE  
 Smoothing : OFF  
 Sampling : 1  
 Start Thrs: 0.2  
 Stop Thrs : 0

Filtering: 5  
 Min Area: 0 % of largest Peak  
 Max Peaks: 100  
 Peak Location: TOP

If leading or trailing edge < 100 prefer < Baseline drop else tangent >  
 Peak separation: 5

Method : Z:\VOASRV\HPCHEM1\MSVOA\_V\METHOD\SOM2VLM042219S.M  
 Title : VOC Analysis

|     |        |      |      |      |      |        |         |        |         |
|-----|--------|------|------|------|------|--------|---------|--------|---------|
| 72  | 10.260 | 2840 | 2852 | 2870 | rBV  | 211667 | 340684  | 29.27% | 3.815%  |
| 73  | 10.424 | 2894 | 2903 | 2918 | rVB2 | 12244  | 20219   | 1.74%  | 0.226%  |
| 74  | 10.486 | 2919 | 2922 | 2927 | rBV2 | 584    | 616     | 0.05%  | 0.007%  |
| 75  | 10.685 | 2982 | 2984 | 2988 | rBV  | 900    | 515     | 0.04%  | 0.006%  |
| 76  | 10.871 | 3036 | 3042 | 3043 | rBV  | 545    | 400     | 0.03%  | 0.004%  |
| 77  | 10.916 | 3054 | 3056 | 3058 | rBV  | 546    | 248     | 0.02%  | 0.003%  |
| 78  | 11.077 | 3104 | 3106 | 3109 | rBB2 | 1192   | 704     | 0.06%  | 0.008%  |
| 79  | 11.096 | 3110 | 3112 | 3115 | rVV2 | 542    | 273     | 0.02%  | 0.003%  |
| 80  | 11.193 | 3136 | 3142 | 3143 | rBV2 | 2173   | 2173    | 0.19%  | 0.024%  |
| 81  | 11.296 | 3162 | 3174 | 3190 | rBV  | 629572 | 1019313 | 87.57% | 11.413% |
| 82  | 11.672 | 3278 | 3291 | 3307 | rBV  | 502204 | 804631  | 69.12% | 9.010%  |
| 83  | 11.833 | 3338 | 3341 | 3347 | rVB5 | 1378   | 1300    | 0.11%  | 0.015%  |
| 84  | 11.865 | 3347 | 3351 | 3352 | rBV2 | 1056   | 657     | 0.06%  | 0.007%  |
| 85  | 11.945 | 3371 | 3376 | 3381 | rBV5 | 1052   | 1107    | 0.10%  | 0.012%  |
| 86  | 12.106 | 3424 | 3426 | 3428 | rVB2 | 790    | 291     | 0.02%  | 0.003%  |
| 87  | 12.299 | 3477 | 3486 | 3496 | rBV3 | 9914   | 16533   | 1.42%  | 0.185%  |
| 88  | 12.350 | 3500 | 3502 | 3506 | rVB2 | 653    | 393     | 0.03%  | 0.004%  |
| 89  | 12.370 | 3506 | 3508 | 3511 | rBV3 | 606    | 354     | 0.03%  | 0.004%  |
| 90  | 12.405 | 3511 | 3519 | 3526 | rBV7 | 2083   | 2729    | 0.23%  | 0.031%  |
| 91  | 12.502 | 3547 | 3549 | 3551 | rBV2 | 738    | 404     | 0.03%  | 0.005%  |
| 92  | 12.604 | 3579 | 3581 | 3585 | rBV3 | 517    | 390     | 0.03%  | 0.004%  |
| 93  | 12.637 | 3588 | 3591 | 3595 | rBV3 | 495    | 462     | 0.04%  | 0.005%  |
| 94  | 12.784 | 3633 | 3637 | 3639 | rBV2 | 569    | 469     | 0.04%  | 0.005%  |
| 95  | 13.003 | 3697 | 3705 | 3710 | rBV5 | 1711   | 2336    | 0.20%  | 0.026%  |
| 96  | 13.447 | 3841 | 3843 | 3845 | rBV2 | 719    | 376     | 0.03%  | 0.004%  |
| 97  | 13.553 | 3866 | 3876 | 3891 | rBV  | 65001  | 105060  | 9.03%  | 1.176%  |
| 98  | 13.794 | 3945 | 3951 | 3962 | rVB2 | 11446  | 16623   | 1.43%  | 0.186%  |
| 99  | 14.685 | 4219 | 4228 | 4239 | rBV2 | 43541  | 68056   | 5.85%  | 0.762%  |
| 100 | 14.868 | 4277 | 4285 | 4299 | rVB3 | 25092  | 43112   | 3.70%  | 0.483%  |

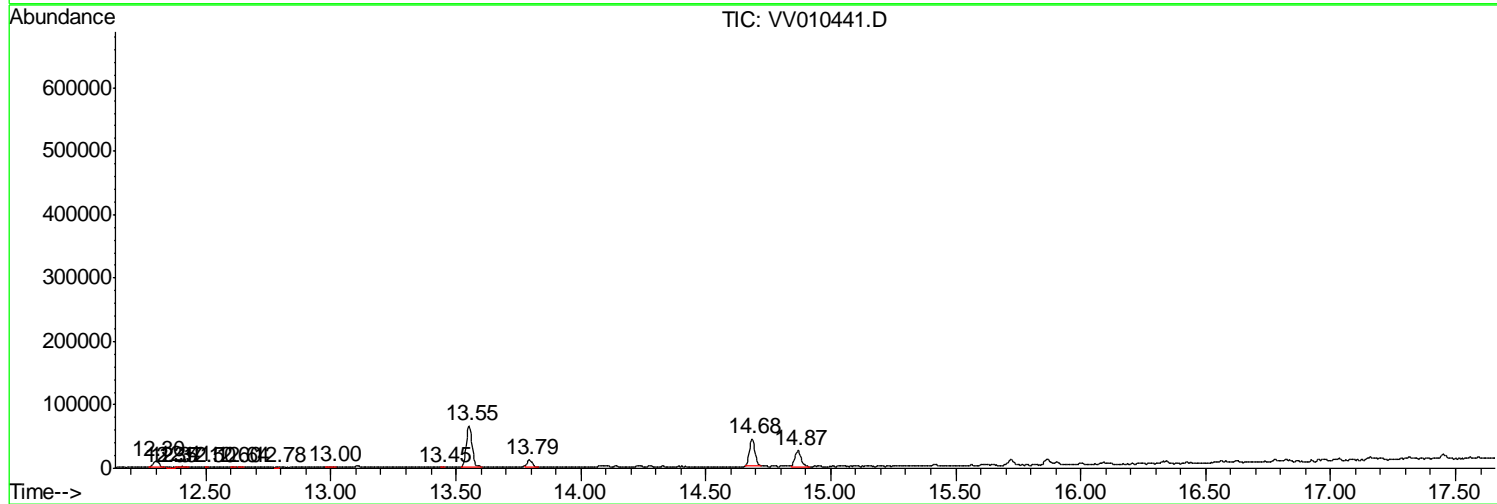
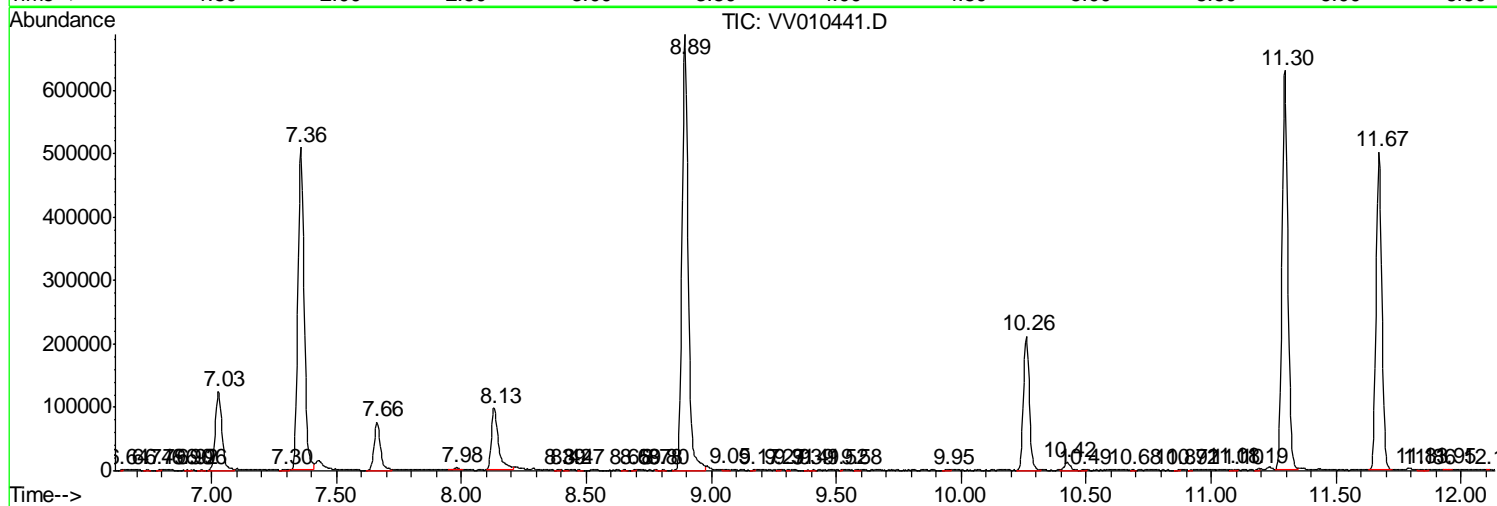
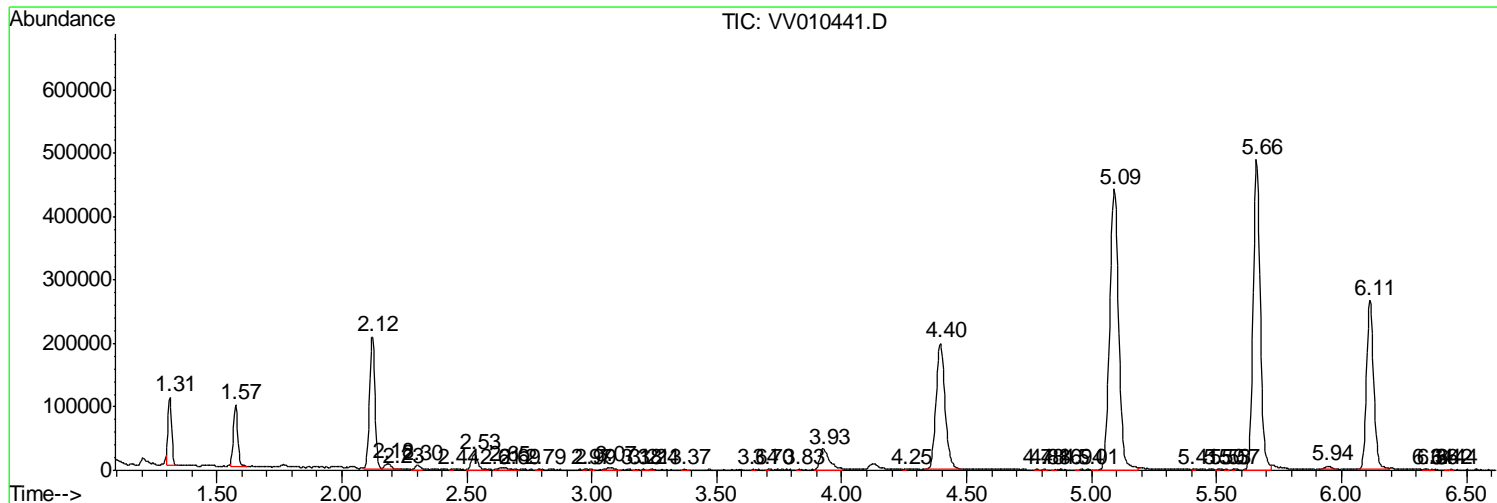
Sum of corrected areas: 8930859

Data Path : Z:\VOASRV\HPCHEM1\MSVOA V\DATA\VV042219\  
 Data File : VV010441.D  
 Acq On : 23 Apr 2019 07:18  
 Operator : SY/MD  
 Sample : K2481-05  
 Misc : 5.09G/10mL/MSVOA V/SOIL  
 ALS Vial : 1 Sample Multiplier: 1

Instrument :  
 MSVOA\_V  
 Client Sampled :  
 GAHW0

Quant Method : Z:\VOASRV\HPCHEM1\MSVOA\_V\METHOD\SOM2VLM042219S.M  
 Quant Title : VOC Analysis

TIC Library : C:\DATABASE\NIST11.L  
 TIC Integration Parameters: LSCINT.P



Data Path : Z:\VOASRV\HPCHEM1\MSVOA V\DATA\VV042219\  
 Data File : VV010441.D  
 Acq On : 23 Apr 2019 07:18  
 Operator : SY/MD  
 Sample : K2481-05  
 Misc : 5.09G/10mL/MSVOA V/SOIL  
 ALS Vial : 1 Sample Multiplier: 1

Instrument :  
 MSVOA\_V  
 ClientSampled :  
 GAHW0

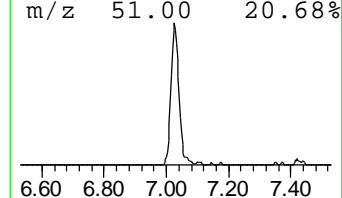
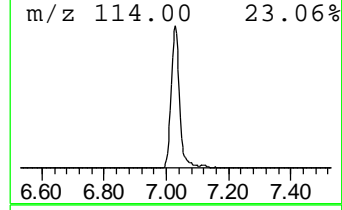
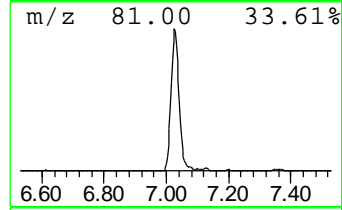
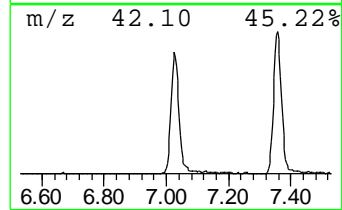
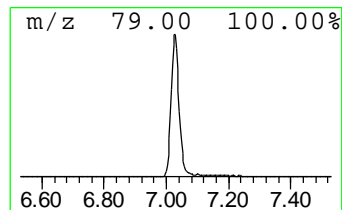
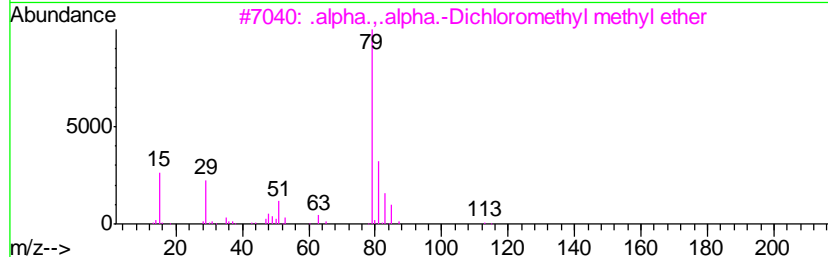
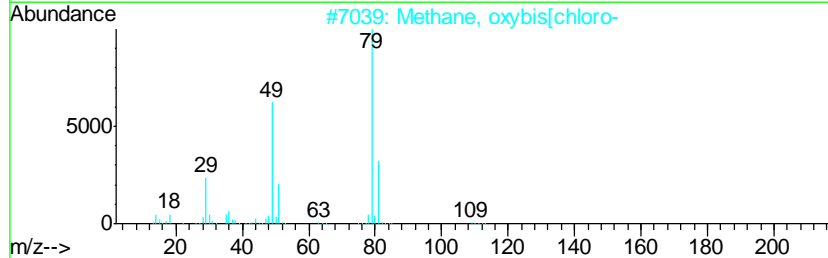
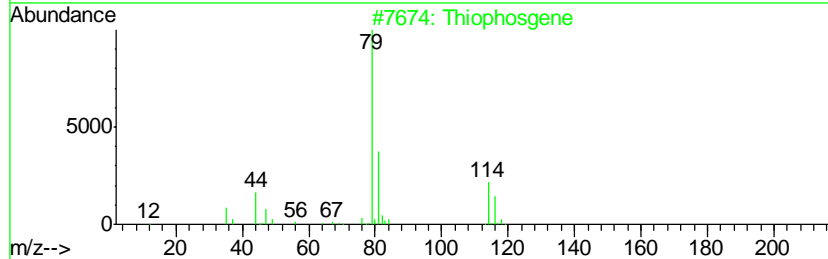
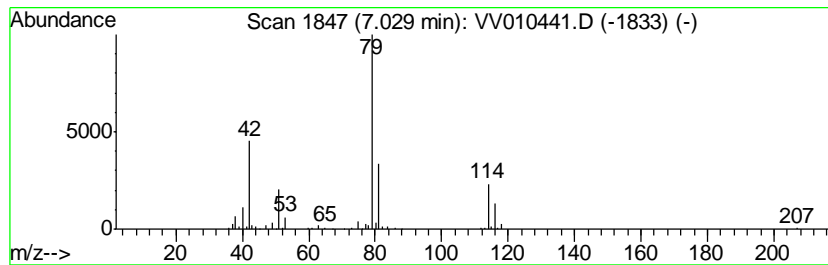
Quant Method : Z:\VOASRV\HPCHEM1\MSVOA\_V\METHOD\SOM2VLM042219S.M  
 Quant Title : VOC Analysis

TIC Library : C:\DATABASE\NIST11.L  
 TIC Integration Parameters: LSCINT.P

\*\*\*\*\*  
 Peak Number 1 Thiophosgene Concentration Rank 1

| R.T. | EstConc   | Area   | Relative to ISTD    | R.T. |
|------|-----------|--------|---------------------|------|
| 7.03 | 5.90 ug/L | 228186 | 1,4-Difluorobenzene | 5.66 |

| Hit# | of | Tentative ID                        | MW  | MolForm  | CAS#        | Qual |
|------|----|-------------------------------------|-----|----------|-------------|------|
| 1    | 5  | Thiophosgene                        | 114 | CCl2S    | 000463-71-8 | 52   |
| 2    |    | Methane, oxybis[chloro-             | 114 | C2H4Cl2O | 000542-88-1 | 25   |
| 3    |    | .alpha.,.alpha.-Dichloromethyl m... | 114 | C2H4Cl2O | 004885-02-3 | 23   |
| 4    |    | 2-Propanol, 1,3-dichloro-           | 128 | C3H6Cl2O | 000096-23-1 | 23   |
| 5    |    | 2-Propanol, 1,3-dichloro-           | 128 | C3H6Cl2O | 000096-23-1 | 9    |



Data Path : Z:\VOASRV\HPCHEM1\MSVOA V\DATA\VV042219\  
 Data File : VV010441.D  
 Acq On : 23 Apr 2019 07:18  
 Operator : SY/MD  
 Sample : K2481-05  
 Misc : 5.09G/10mL/MSVOA V/SOIL  
 ALS Vial : 1 Sample Multiplier: 1

Instrument :  
 MSVOA\_V  
 ClientSampleID :  
 GAHW0

Quant Method : Z:\VOASRV\HPCHEM1\MSVOA\_V\METHOD\SOM2VLM042219S.M  
 Quant Title : VOC Analysis

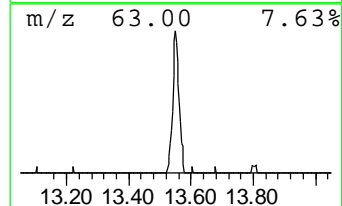
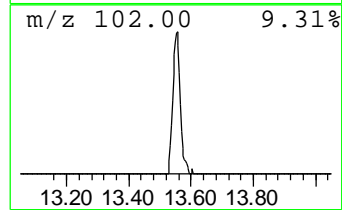
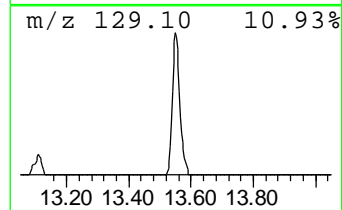
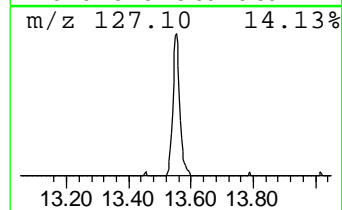
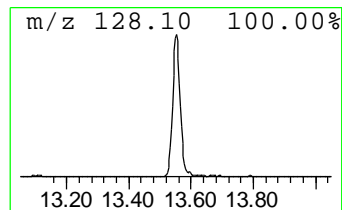
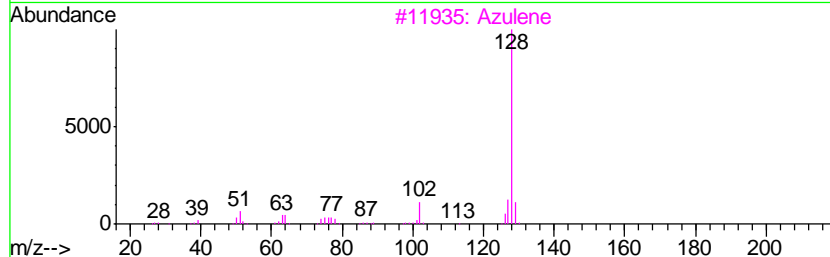
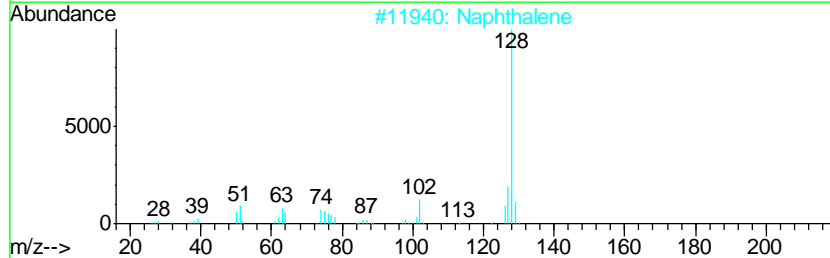
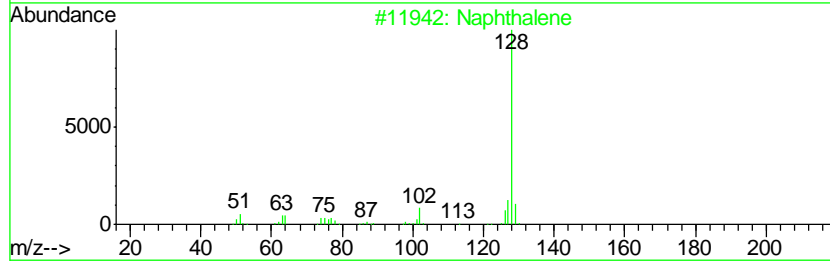
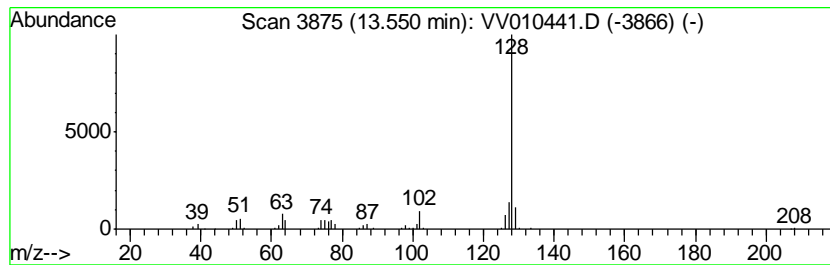
TIC Library : C:\DATABASE\NIST11.L  
 TIC Integration Parameters: LSCINT.P

\*\*\*\*\*  
 Peak Number 2 Azulene Concentration Rank 2

| R.T.  | EstConc   | Area   | Relative to ISTD       | R.T.  |
|-------|-----------|--------|------------------------|-------|
| 13.55 | 2.58 ug/L | 105060 | 1,4-Dichlorobenzene-d4 | 11.30 |

| Hit# | of | Tentative ID            | MW  | MolForm | CAS#        | Qual |
|------|----|-------------------------|-----|---------|-------------|------|
| 1    | 5  | Naphthalene             | 128 | C10H8   | 000091-20-3 | 95   |
| 2    |    | Naphthalene             | 128 | C10H8   | 000091-20-3 | 94   |
| 3    |    | Azulene                 | 128 | C10H8   | 000275-51-4 | 91   |
| 4    |    | 1H-Indene, 1-methylene- | 128 | C10H8   | 002471-84-3 | 91   |
| 5    |    | Azulene                 | 128 | C10H8   | 000275-51-4 | 91   |



Data Path : Z:\VOASRV\HPCHEM1\MSVOA V\DATA\VV042219\  
 Data File : VV010441.D  
 Acq On : 23 Apr 2019 07:18  
 Operator : SY/MD  
 Sample : K2481-05  
 Misc : 5.09G/10mL/MSVOA V/SOIL  
 ALS Vial : 1 Sample Multiplier: 1

Instrument :  
 MSVOA\_V  
 ClientSampled :  
 GAHW0

Quant Method : Z:\VOASRV\HPCHEM1\MSVOA\_V\METHOD\SOM2VLM042219S.M  
 Quant Title : VOC Analysis

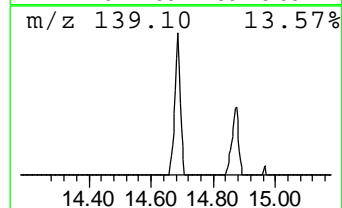
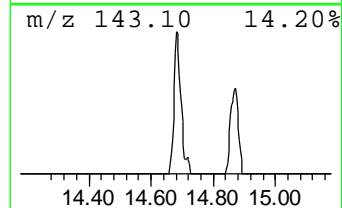
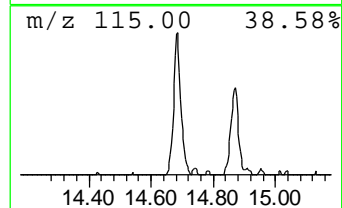
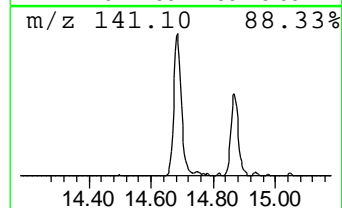
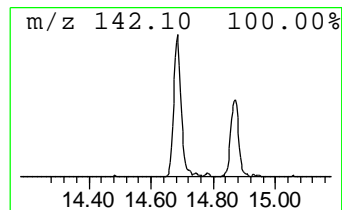
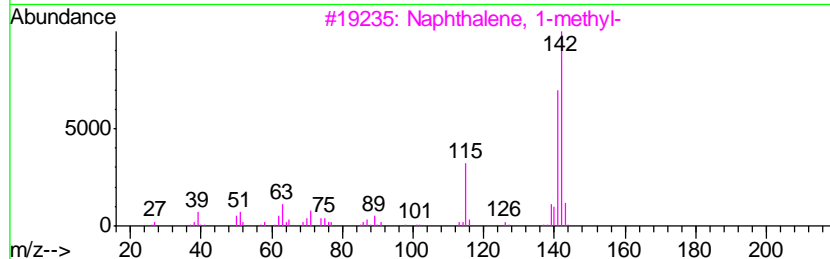
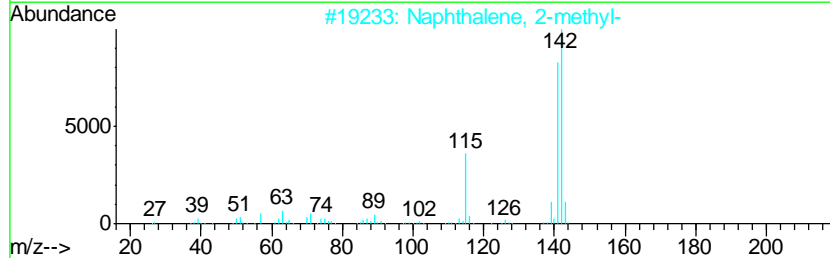
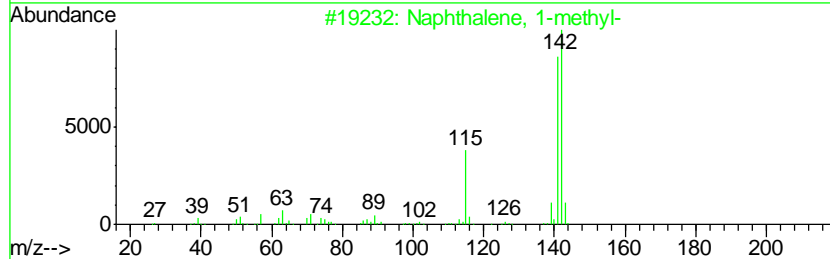
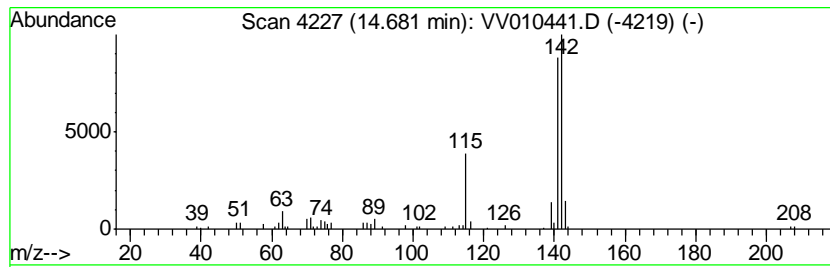
TIC Library : C:\DATABASE\NIST11.L  
 TIC Integration Parameters: LSCINT.P

\*\*\*\*\*  
 Peak Number 3 1,4-Methanonaphthalene, 1,4... Concentration Rank 3

| R.T.  | EstConc   | Area  | Relative to ISTD       | R.T.  |
|-------|-----------|-------|------------------------|-------|
| 14.68 | 1.67 ug/L | 68056 | 1,4-Dichlorobenzene-d4 | 11.30 |

| Hit# | of | Tentative ID                        | MW  | MolForm | CAS#        | Qual |
|------|----|-------------------------------------|-----|---------|-------------|------|
| 1    | 5  | Naphthalene, 1-methyl-              | 142 | C11H10  | 000090-12-0 | 95   |
| 2    |    | Naphthalene, 2-methyl-              | 142 | C11H10  | 000091-57-6 | 94   |
| 3    |    | Naphthalene, 1-methyl-              | 142 | C11H10  | 000090-12-0 | 94   |
| 4    |    | Naphthalene, 2-methyl-              | 142 | C11H10  | 000091-57-6 | 93   |
| 5    |    | 1,4-Methanonaphthalene, 1,4-dihy... | 142 | C11H10  | 004453-90-1 | 91   |



Data Path : Z:\VOASRV\HPCHEM1\MSVOA\_V\DATA\VV042219\  
Data File : VV010441.D  
Acq On : 23 Apr 2019 07:18  
Operator : SY/MD  
Sample : K2481-05  
Misc : 5.09G/10mL/MSVOA\_V/SOIL  
ALS Vial : 1 Sample Multiplier: 1

Instrument :  
MSVOA\_V  
ClientSampleId :  
GAHW0

Quant Method : Z:\VOASRV\HPCHEM1\MSVOA\_V\METHOD\SOM2VLM042219S.M  
Quant Title : VOC Analysis

TIC Library : C:\DATABASE\NIST11.L  
TIC Integration Parameters: LSCINT.P

| TIC Top Hit name     | RT    | EstConc | Units | Response | --Internal Standard-- |       |         |      |
|----------------------|-------|---------|-------|----------|-----------------------|-------|---------|------|
|                      |       |         |       |          | #                     | RT    | Resp    | Conc |
| Thiophosgene         | 7.03  | 5.9     | ug/L  | 228186   | 1                     | 5.66  | 966547  | 25.0 |
| Azulene              | 13.55 | 2.6     | ug/L  | 105060   | 3                     | 11.30 | 1019310 | 25.0 |
| 1,4-Methanonaphth... | 14.68 | 1.7     | ug/L  | 68056    | 3                     | 11.30 | 1019310 | 25.0 |