

Data Path : Z:\VOASRV\HPCHEM1\MSVOA V\DATA\VV042219\  
 Data File : VV010447.D  
 Acq On : 23 Apr 2019 10:27  
 Operator : SY/MD  
 Sample : K2481-07  
 Misc : 5.08G/10mL/MSVOA V/SOIL  
 ALS Vial : 1 Sample Multiplier: 1

Instrument :  
 MSVOA\_V  
 ClientSampleId :  
 GAHW2

## Integration Parameters: LSCINT.P

Integrator: RTE  
 Smoothing : OFF  
 Sampling : 1  
 Start Thrs: 0.2  
 Stop Thrs : 0

Filtering: 5  
 Min Area: 0 % of largest Peak  
 Max Peaks: 100  
 Peak Location: TOP

If leading or trailing edge < 100 prefer < Baseline drop else tangent >  
 Peak separation: 5

Method : Z:\VOASRV\HPCHEM1\MSVOA\_V\METHOD\SOM2VLM042219S.M  
 Title : VOC Analysis

Signal : TIC

peak #	R.T. min	first scan	max scan	last scan	PK TY	peak height	corr. area	corr. % max.	% of total
1	2.129	313	323	333	rBV	31911	46155	0.15%	0.083%
2	2.373	394	399	401	rBV	846	555	0.00%	0.001%
3	2.431	414	417	422	rBV3	426	427	0.00%	0.001%
4	2.460	422	426	429	rBV2	567	362	0.00%	0.001%
5	2.534	442	449	451	rBV5	4932	5685	0.02%	0.010%
6	2.724	503	508	509	rBV	657	509	0.00%	0.001%
7	2.778	521	525	528	rBV3	1545	1400	0.00%	0.003%
8	3.026	599	602	605	rBV2	473	372	0.00%	0.001%
9	3.074	608	617	618	rBV4	3251	3703	0.01%	0.007%
10	3.180	648	650	657	rVB2	625	479	0.00%	0.001%
11	3.315	689	692	696	rVB	444	272	0.00%	0.000%
12	3.383	709	713	717	rBV	365	437	0.00%	0.001%
13	3.425	724	726	728	rBV	612	206	0.00%	0.000%
14	3.640	790	793	795	rBV	468	320	0.00%	0.001%
15	3.688	806	808	811	rVB2	508	236	0.00%	0.000%
16	3.737	819	823	826	rBV	461	359	0.00%	0.001%
17	3.756	826	829	835	rVV2	498	426	0.00%	0.001%
18	3.939	877	886	888	rBV	3428	4535	0.01%	0.008%
19	4.142	940	949	955	rBV5	1589	2717	0.01%	0.005%
20	4.232	975	977	981	rBV3	347	231	0.00%	0.000%
21	4.264	985	987	989	rVB2	532	233	0.00%	0.000%
22	4.312	998	1002	1007	rBV3	608	565	0.00%	0.001%
23	4.399	1013	1029	1046	rBV	24214	61149	0.20%	0.111%
24	4.486	1054	1056	1058	rBV	350	198	0.00%	0.000%
25	4.553	1073	1077	1078	rBV	392	237	0.00%	0.000%
26	4.563	1078	1080	1083	rVB3	379	198	0.00%	0.000%
27	4.592	1086	1089	1091	rBV2	641	350	0.00%	0.001%
28	4.650	1102	1107	1109	rBV2	437	370	0.00%	0.001%
29	4.691	1116	1120	1121	rBV	281	178	0.00%	0.000%
30	4.820	1156	1160	1164	rBV2	537	419	0.00%	0.001%
31	4.849	1167	1169	1174	rBV2	601	417	0.00%	0.001%
32	4.939	1193	1197	1199	rBV2	556	394	0.00%	0.001%
33	5.097	1229	1246	1261	rBV3	47899	124029	0.41%	0.224%
34	5.409	1337	1343	1346	rVV3	565	594	0.00%	0.001%

Data Path : Z:\VOASRV\HPCHEM1\MSVOA V\DATA\VV042219\  
 Data File : VV010447.D  
 Acq On : 23 Apr 2019 10:27  
 Operator : SY/MD  
 Sample : K2481-07  
 Misc : 5.08G/10mL/MSVOA V/SOIL  
 ALS Vial : 1 Sample Multiplier: 1

Instrument :  
 MSVOA\_V  
 ClientSampleId :  
 GAHW2

## Integration Parameters: LSCINT.P

Integrator: RTE  
 Smoothing : OFF  
 Sampling : 1  
 Start Thrs: 0.2  
 Stop Thrs : 0

Filtering: 5  
 Min Area: 0 % of largest Peak  
 Max Peaks: 100  
 Peak Location: TOP

If leading or trailing edge < 100 prefer < Baseline drop else tangent >  
 Peak separation: 5

Method : Z:\VOASRV\HPCHEM1\MSVOA\_V\METHOD\SOM2VLM042219S.M  
 Title : VOC Analysis

35	5.495	1366	1370	1373	rBV	450	353	0.00%	0.001%
36	5.556	1383	1389	1390	rBV2	410	400	0.00%	0.001%
37	5.666	1405	1423	1441	rBV2	46160	94713	0.31%	0.171%
38	5.865	1483	1485	1488	rBV2	341	239	0.00%	0.000%
39	5.920	1498	1502	1505	rBV3	518	493	0.00%	0.001%
40	5.997	1522	1526	1531	rBV2	672	736	0.00%	0.001%
41	6.045	1537	1541	1543	rBV	537	317	0.00%	0.001%
42	6.116	1551	1563	1577	rBV3	26979	54867	0.18%	0.099%
43	6.386	1643	1647	1649	rVB	489	277	0.00%	0.001%
44	6.402	1649	1652	1654	rBV2	302	230	0.00%	0.000%
45	6.592	1707	1711	1714	rVB2	534	350	0.00%	0.001%
46	6.624	1714	1721	1724	rBV3	692	640	0.00%	0.001%
47	6.756	1759	1762	1766	rVB	429	323	0.00%	0.001%
48	6.794	1770	1774	1776	rBV2	507	315	0.00%	0.001%
49	6.830	1781	1785	1788	rVB4	791	605	0.00%	0.001%
50	6.868	1793	1797	1799	rBV3	428	361	0.00%	0.001%
51	7.029	1838	1847	1864	rBV2	11056	21115	0.07%	0.038%
52	7.257	1917	1918	1920	rVB	612	219	0.00%	0.000%
53	7.296	1928	1930	1932	rBV	323	175	0.00%	0.000%
54	7.360	1936	1950	1962	rBV	40361	75037	0.25%	0.136%
55	7.431	1963	1972	1993	rVB	97263	172237	0.56%	0.312%
56	7.666	2037	2045	2060	rVB4	6327	11231	0.04%	0.020%
57	7.720	2060	2062	2066	rBV3	696	468	0.00%	0.001%
58	7.810	2085	2090	2091	rBV2	661	448	0.00%	0.001%
59	8.093	2177	2178	2180	rBV	464	208	0.00%	0.000%
60	8.138	2184	2192	2203	rVV6	10726	20442	0.07%	0.037%
61	8.289	2237	2239	2241	rBV2	667	334	0.00%	0.001%
62	8.334	2249	2253	2256	rVB2	911	572	0.00%	0.001%
63	8.357	2256	2260	2265	rVB3	450	451	0.00%	0.001%
64	8.389	2265	2270	2272	rBV2	619	555	0.00%	0.001%
65	8.482	2296	2299	2301	rBV	355	232	0.00%	0.000%
66	8.572	2324	2327	2329	rBV2	491	326	0.00%	0.001%
67	8.621	2339	2342	2344	rBV	342	215	0.00%	0.000%
68	8.682	2358	2361	2364	rBV2	381	293	0.00%	0.001%
69	8.743	2377	2380	2381	rBV	465	244	0.00%	0.000%
70	8.801	2395	2398	2400	rBV	354	195	0.00%	0.000%
71	8.897	2418	2428	2443	rBV	47509	78424	0.26%	0.142%

Data Path : Z:\VOASRV\HPCHEM1\MSVOA V\DATA\VV042219\  
 Data File : VV010447.D  
 Acq On : 23 Apr 2019 10:27  
 Operator : SY/MD  
 Sample : K2481-07  
 Misc : 5.08G/10mL/MSVOA V/SOIL  
 ALS Vial : 1 Sample Multiplier: 1

Instrument :  
 MSVOA\_V  
 ClientSampleId :  
 GAHW2

## Integration Parameters: LSCINT.P

Integrator: RTE  
 Smoothing : OFF Filtering: 5  
 Sampling : 1 Min Area: 0 % of largest Peak  
 Start Thrs: 0.2 Max Peaks: 100  
 Stop Thrs : 0 Peak Location: TOP

If leading or trailing edge < 100 prefer < Baseline drop else tangent >  
 Peak separation: 5

Method : Z:\VOASRV\HPCHEM1\MSVOA\_V\METHOD\SOM2VLM042219S.M  
 Title : VOC Analysis

72	9.051	2471	2476	2479	rBV3	1535	1467	0.00%	0.003%
73	9.180	2504	2516	2531	rBV	70911	120196	0.39%	0.217%
74	9.395	2581	2583	2586	rBB2	559	196	0.00%	0.000%
75	9.495	2611	2614	2616	rBV2	358	208	0.00%	0.000%
76	9.540	2626	2628	2631	rBV	357	184	0.00%	0.000%
77	9.592	2633	2644	2662	rVV5	27091	57129	0.19%	0.103%
78	9.720	2682	2684	2686	rBV	454	250	0.00%	0.000%
79	9.781	2699	2703	2705	rBV2	552	365	0.00%	0.001%
80	9.865	2727	2729	2730	rBV	656	239	0.00%	0.000%
81	9.887	2734	2736	2739	rBV	443	243	0.00%	0.000%
82	9.932	2748	2750	2753	rBV2	498	372	0.00%	0.001%
83	9.974	2755	2763	2775	rVB3	7324	12219	0.04%	0.022%
84	10.260	2843	2852	2866	rVB3	18269	29062	0.10%	0.053%
85	10.402	2883	2896	2910	rBV2	12637	26328	0.09%	0.048%
86	10.492	2913	2924	2941	rBV	153433	330220	1.08%	0.597%
87	10.582	2945	2952	2963	rVB	91405	134869	0.44%	0.244%
88	10.743	2999	3002	3004	rVB3	710	306	0.00%	0.001%
89	10.781	3005	3014	3019	rBV	35071	53723	0.18%	0.097%
90	10.958	3061	3069	3081	rVB	280485	420820	1.38%	0.761%
91	11.029	3081	3091	3100	rBV	223055	334657	1.10%	0.605%
92	11.296	3166	3174	3182	rBV3	33936	52481	0.17%	0.095%
93	11.379	3192	3200	3210	rBV	78352	116986	0.38%	0.212%
94	11.588	3253	3265	3271	rBV6	38088	84921	0.28%	0.154%
95	11.791	3321	3328	3334	rBV3	140884	203779	0.67%	0.369%
96	12.511	3545	3552	3561	rBV	743862	1223635	4.01%	2.213%
97	12.932	3676	3683	3695	rVB2	3371449	4764891	15.60%	8.618%
98	14.685	4217	4228	4256	rVB	19581509	30546626	100.00%	55.246%
99	14.868	4275	4285	4303	rVB	9919442	15454241	50.59%	27.950%
100	15.717	4541	4549	4575	rVB2	299212	524197	1.72%	0.948%

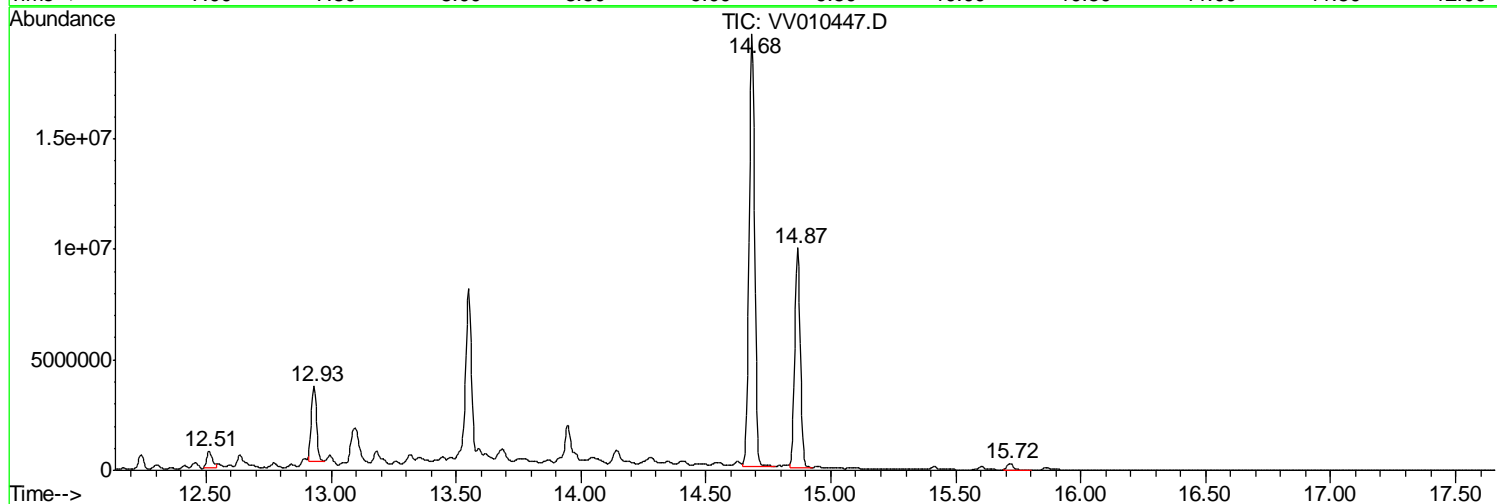
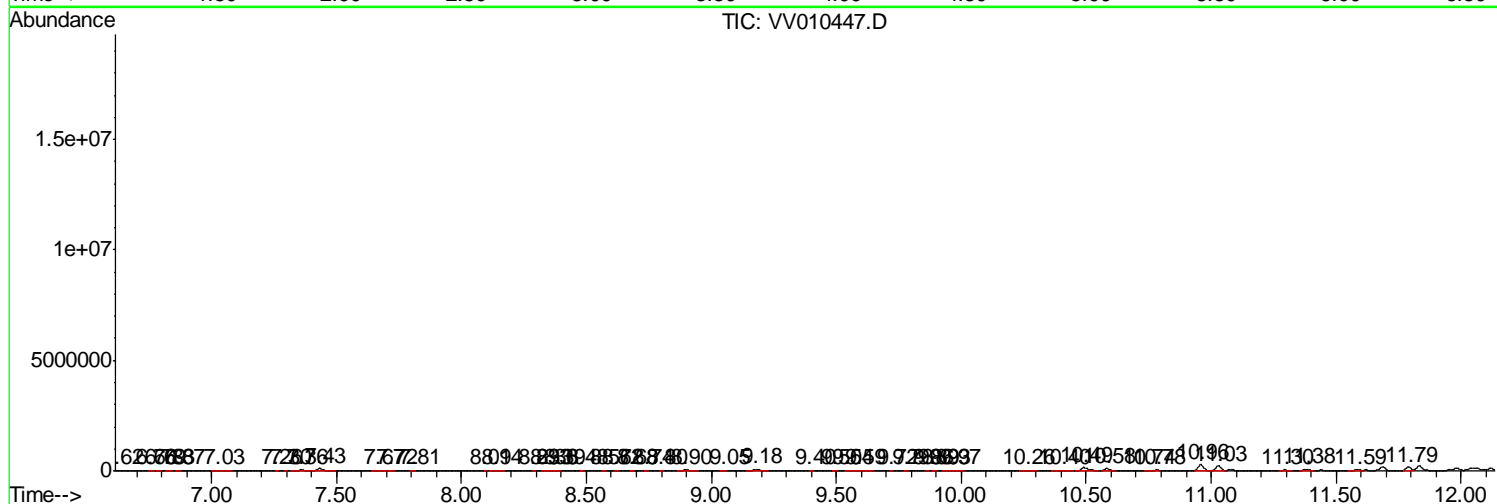
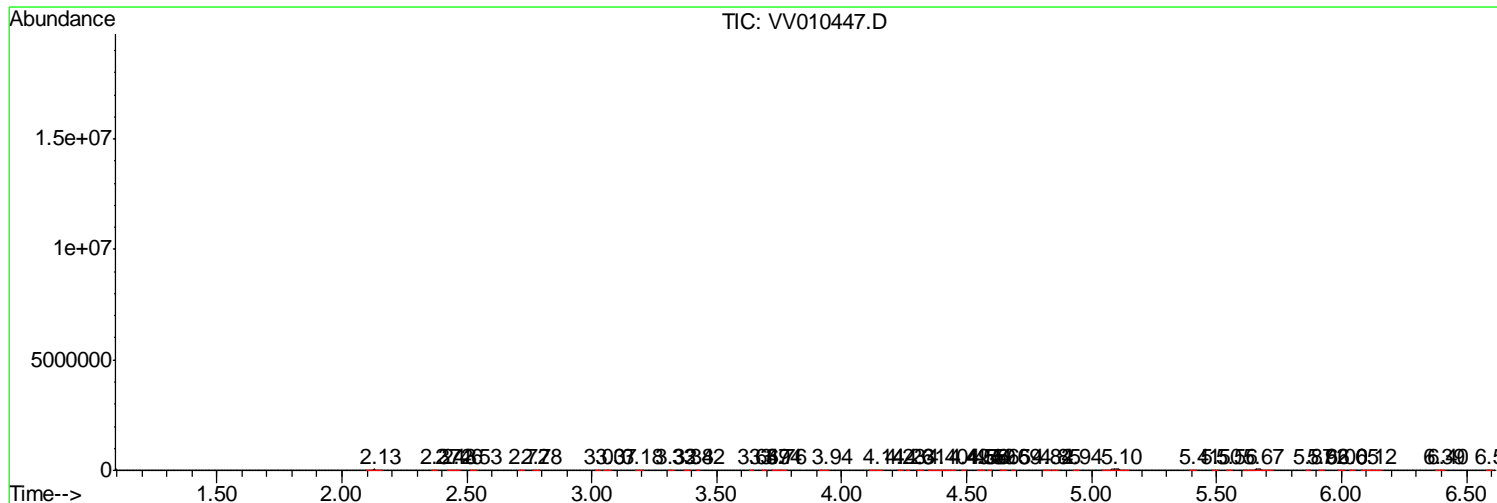
Sum of corrected areas: 55292167

Data Path : Z:\VOASRV\HPCHEM1\MSVOA V\DATA\VV042219\  
 Data File : VV010447.D  
 Acq On : 23 Apr 2019 10:27  
 Operator : SY/MD  
 Sample : K2481-07  
 Misc : 5.08G/10mL/MSVOA V/SOIL  
 ALS Vial : 1 Sample Multiplier: 1

Instrument :  
 MSVOA\_V  
 ClientSampleId :  
 GAHW2

Quant Method : Z:\VOASRV\HPCHEM1\MSVOA\_V\METHOD\SOM2VLM042219S.M  
 Quant Title : VOC Analysis

TIC Library : C:\DATABASE\NIST11.L  
 TIC Integration Parameters: LSCINT.P



Data Path : Z:\VOASRV\HPCHEM1\MSVOA V\DATA\VV042219\  
 Data File : VV010447.D  
 Acq On : 23 Apr 2019 10:27  
 Operator : SY/MD  
 Sample : K2481-07  
 Misc : 5.08G/10mL/MSVOA V/SOIL  
 ALS Vial : 1 Sample Multiplier: 1

Instrument :  
 MSVOA\_V  
 ClientSampleID :  
 GAHW2

Quant Method : Z:\VOASRV\HPCHEM1\MSVOA\_V\METHOD\SOM2VLM042219S.M  
 Quant Title : VOC Analysis

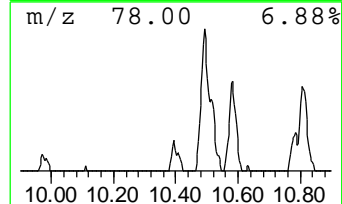
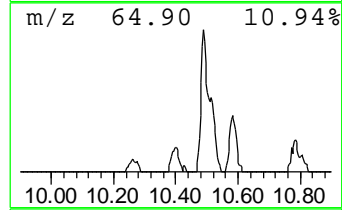
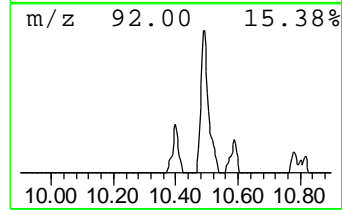
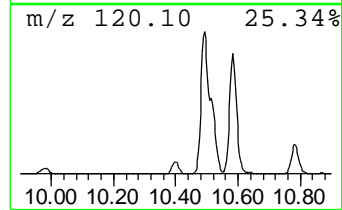
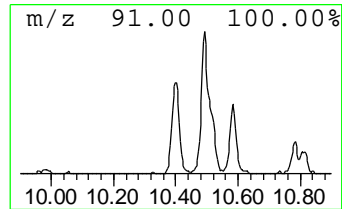
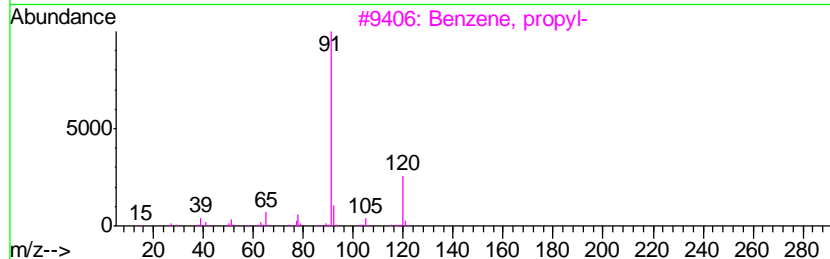
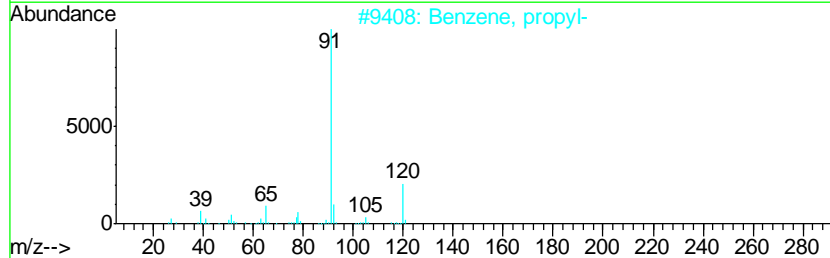
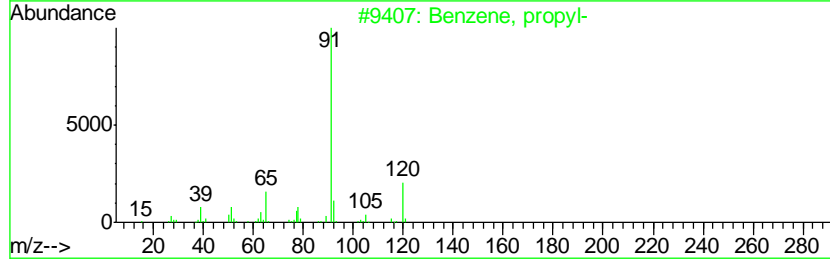
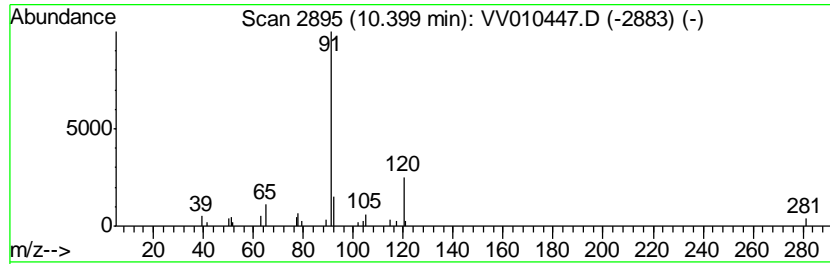
TIC Library : C:\DATABASE\NIST11.L  
 TIC Integration Parameters: LSCINT.P

\*\*\*\*\*  
 Peak Number 2 Benzene, propyl- Concentration Rank 14

R.T.	EstConc	Area	Relative to ISTD	R.T.
10.40	12.54 ug/L	26328	1,4-Dichlorobenzene-d4	11.30

Hit#	of	Tentative ID	MW	MolForm	CAS#	Qual
1	5	Benzene, propyl-	120	C9H12	000103-65-1	80
2		Benzene, propyl-	120	C9H12	000103-65-1	80
3		Benzene, propyl-	120	C9H12	000103-65-1	80
4		Propanenitrile, 3-[(phenylmethyl...]	160	C10H12N2	000706-03-6	59
5		N-Benzyl-2-phenethylamine	211	C15H17N	003647-71-0	50



Data Path : Z:\VOASRV\HPCHEM1\MSVOA V\DATA\VV042219\  
 Data File : VV010447.D  
 Acq On : 23 Apr 2019 10:27  
 Operator : SY/MD  
 Sample : K2481-07  
 Misc : 5.08G/10mL/MSVOA V/SOIL  
 ALS Vial : 1 Sample Multiplier: 1

Instrument :  
 MSVOA\_V  
 ClientSampleID :  
 GAHW2

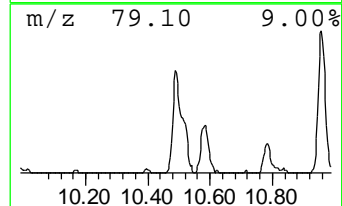
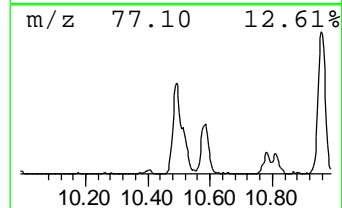
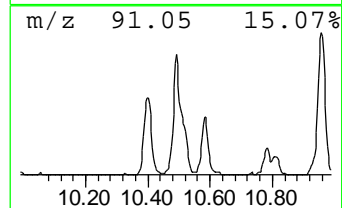
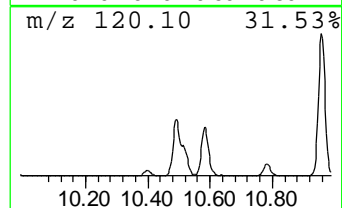
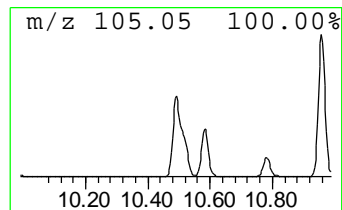
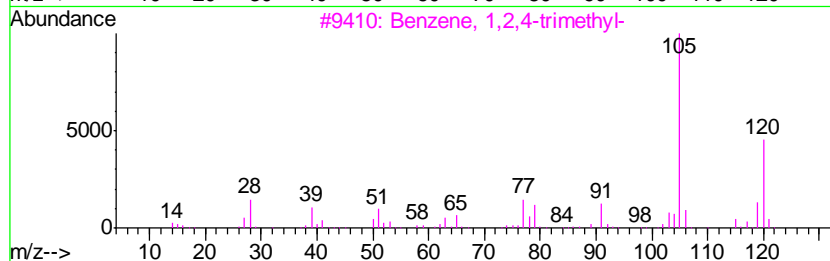
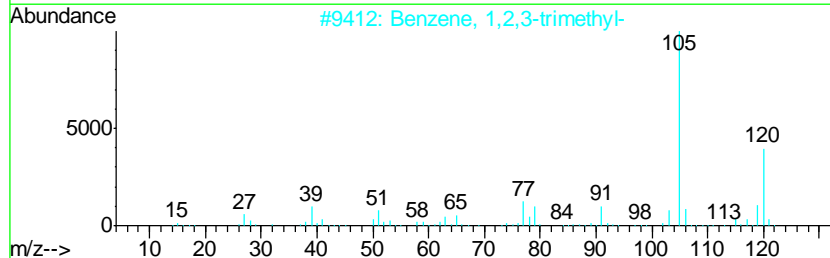
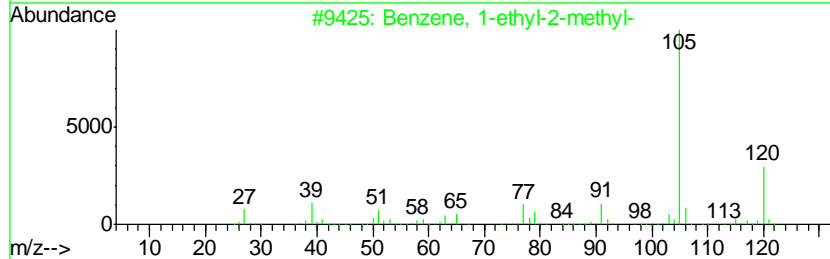
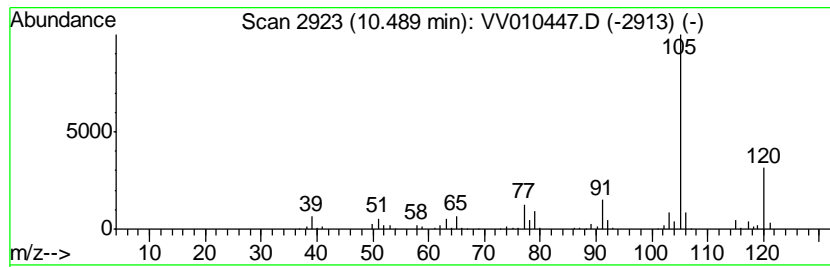
Quant Method : Z:\VOASRV\HPCHEM1\MSVOA\_V\METHOD\SOM2VLM042219S.M  
 Quant Title : VOC Analysis

TIC Library : C:\DATABASE\NIST11.L  
 TIC Integration Parameters: LSCINT.P

\*\*\*\*\*  
 Peak Number 3 Benzene, 1-ethyl-2-methyl- Concentration Rank 8

R.T.	EstConc	Area	Relative to ISTD	R.T.
10.49	157.31 ug/L	330220	1,4-Dichlorobenzene-d4	11.30

Hit#	of	Tentative ID	MW	MolForm	CAS#	Qual
1	5	Benzene, 1-ethyl-2-methyl-	120	C9H12	000611-14-3	95
2		Benzene, 1,2,3-trimethyl-	120	C9H12	000526-73-8	91
3		Benzene, 1,2,4-trimethyl-	120	C9H12	000095-63-6	91
4		Benzene, 1,2,4-trimethyl-	120	C9H12	000095-63-6	91
5		Benzene, 1-ethyl-3-methyl-	120	C9H12	000620-14-4	91



Data Path : Z:\VOASRV\HPCHEM1\MSVOA V\DATA\VV042219\  
 Data File : VV010447.D  
 Acq On : 23 Apr 2019 10:27  
 Operator : SY/MD  
 Sample : K2481-07  
 Misc : 5.08G/10mL/MSVOA V/SOIL  
 ALS Vial : 1 Sample Multiplier: 1

Instrument :  
 MSVOA\_V  
 ClientSampleID :  
 GAHW2

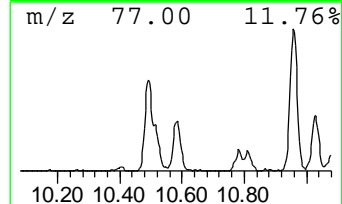
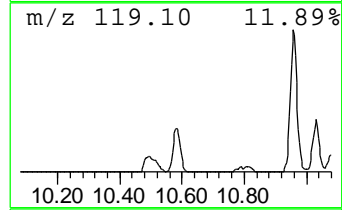
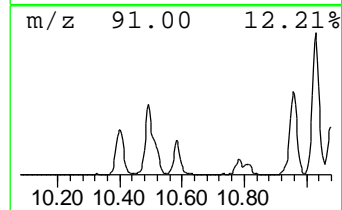
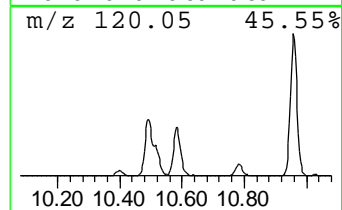
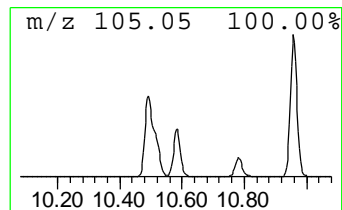
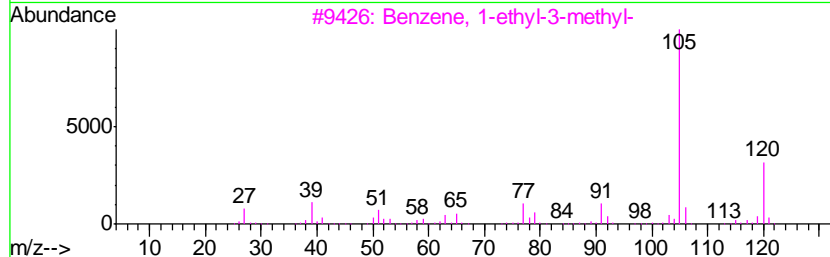
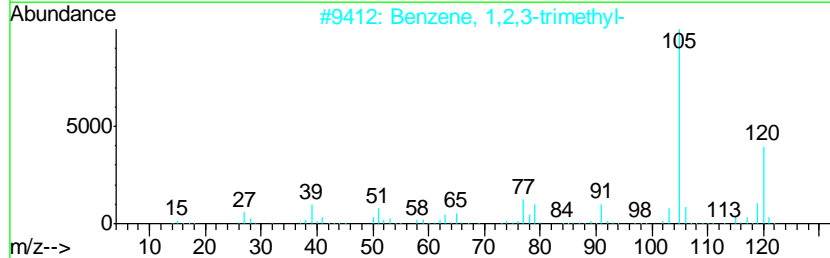
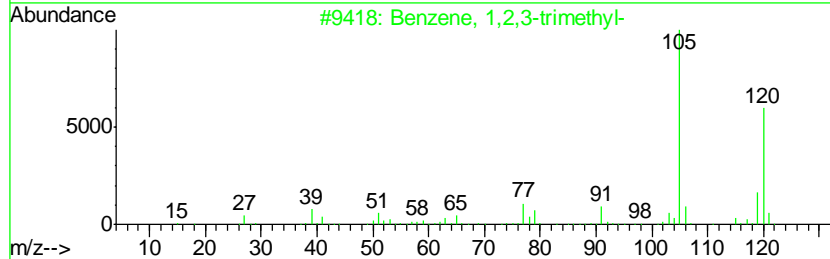
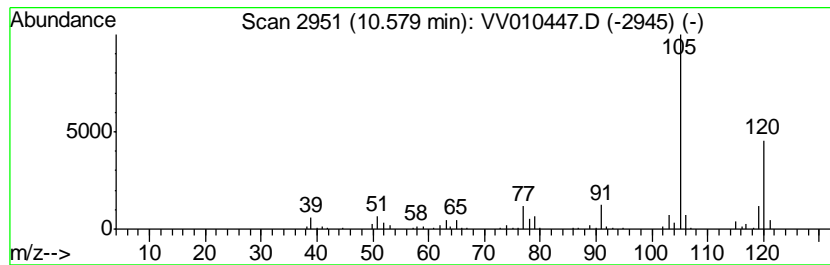
Quant Method : Z:\VOASRV\HPCHEM1\MSVOA\_V\METHOD\SOM2VLM042219S.M  
 Quant Title : VOC Analysis

TIC Library : C:\DATABASE\NIST11.L  
 TIC Integration Parameters: LSCINT.P

\*\*\*\*\*  
 Peak Number 4 Benzene, 1,2,3-trimethyl- Concentration Rank 10

R.T.	EstConc	Area	Relative to ISTD	R.T.
10.58	64.25 ug/L	134869	1,4-Dichlorobenzene-d4	11.30

Hit#	of	Tentative ID	MW	MolForm	CAS#	Qual
1	5	Benzene, 1,2,3-trimethyl-	120	C9H12	000526-73-8	94
2		Benzene, 1,2,3-trimethyl-	120	C9H12	000526-73-8	94
3		Benzene, 1-ethyl-3-methyl-	120	C9H12	000620-14-4	91
4		Mesitylene	120	C9H12	000108-67-8	91
5		Mesitylene	120	C9H12	000108-67-8	91



Data Path : Z:\VOASRV\HPCHEM1\MSVOA V\DATA\VV042219\  
 Data File : VV010447.D  
 Acq On : 23 Apr 2019 10:27  
 Operator : SY/MD  
 Sample : K2481-07  
 Misc : 5.08G/10mL/MSVOA V/SOIL  
 ALS Vial : 1 Sample Multiplier: 1

Instrument :  
 MSVOA\_V  
 ClientSampleID :  
 GAHW2

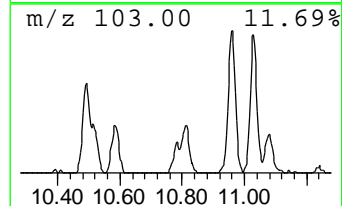
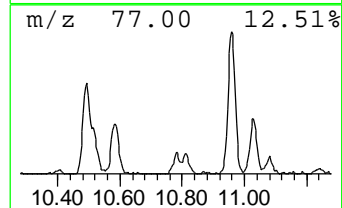
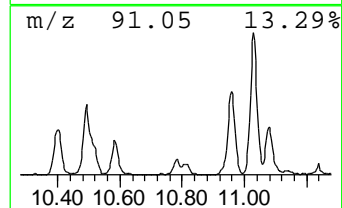
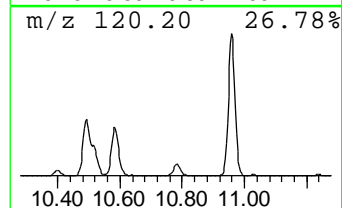
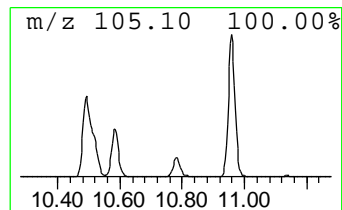
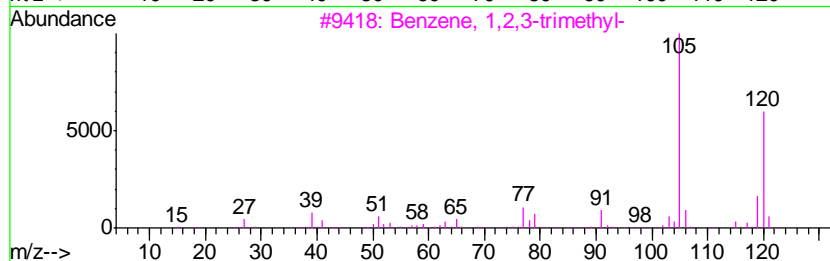
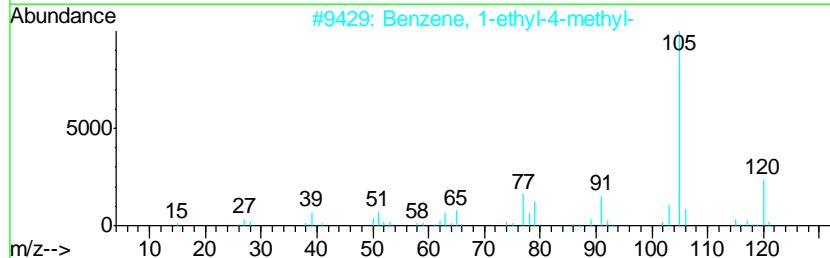
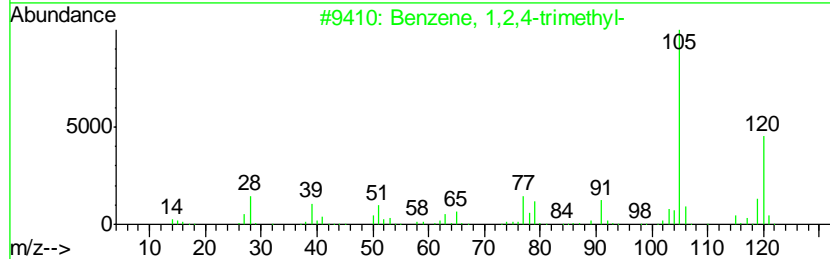
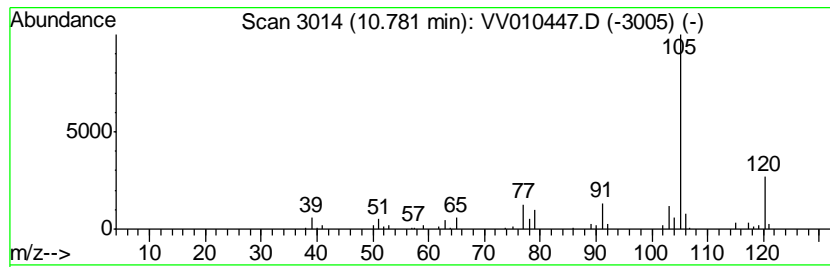
Quant Method : Z:\VOASRV\HPCHEM1\MSVOA\_V\METHOD\SOM2VLM042219S.M  
 Quant Title : VOC Analysis

TIC Library : C:\DATABASE\NIST11.L  
 TIC Integration Parameters: LSCINT.P

\*\*\*\*\*  
 Peak Number 5 Benzene, 1,2,4-trimethyl- Concentration Rank 13

R.T.	EstConc	Area	Relative to ISTD	R.T.
10.78	25.59 ug/L	53723	1,4-Dichlorobenzene-d4	11.30

Hit#	of	Tentative ID	MW	MolForm	CAS#	Qual
1	5	Benzene, 1,2,4-trimethyl-	120	C9H12	000095-63-6	94
2		Benzene, 1-ethyl-4-methyl-	120	C9H12	000622-96-8	93
3		Benzene, 1,2,3-trimethyl-	120	C9H12	000526-73-8	91
4		Benzene, 1-ethyl-3-methyl-	120	C9H12	000620-14-4	90
5		Mesitylene	120	C9H12	000108-67-8	90





Data Path : Z:\VOASRV\HPCHEM1\MSVOA V\DATA\VV042219\  
 Data File : VV010447.D  
 Acq On : 23 Apr 2019 10:27  
 Operator : SY/MD  
 Sample : K2481-07  
 Misc : 5.08G/10mL/MSVOA V/SOIL  
 ALS Vial : 1 Sample Multiplier: 1

Instrument :  
 MSVOA\_V  
 ClientSampleID :  
 GAHW2

Quant Method : Z:\VOASRV\HPCHEM1\MSVOA\_V\METHOD\SOM2VLM042219S.M  
 Quant Title : VOC Analysis

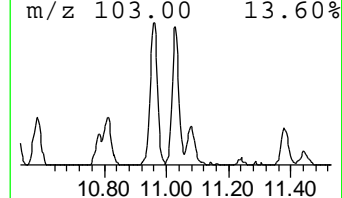
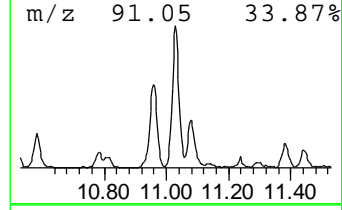
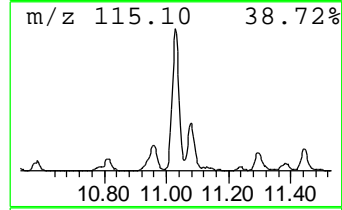
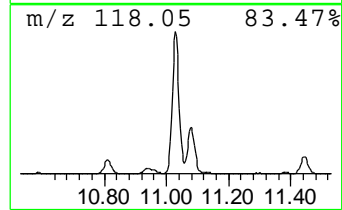
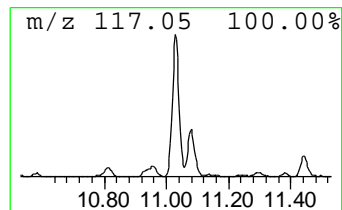
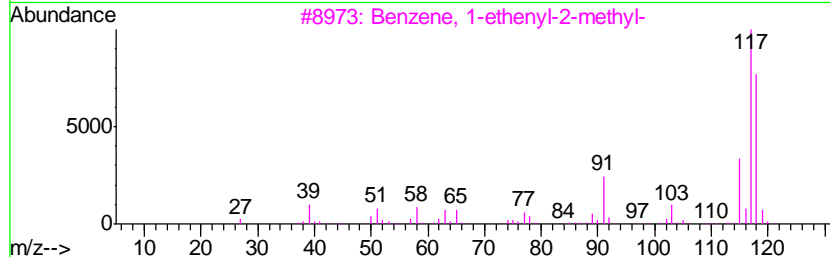
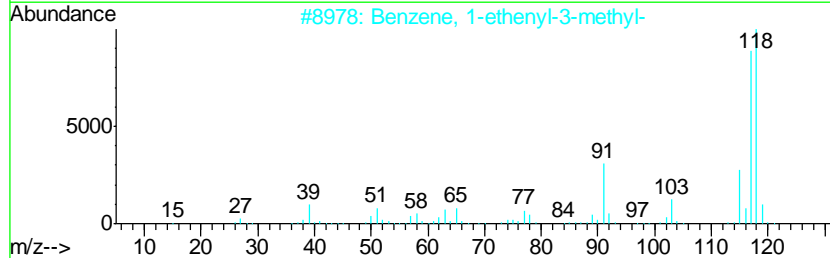
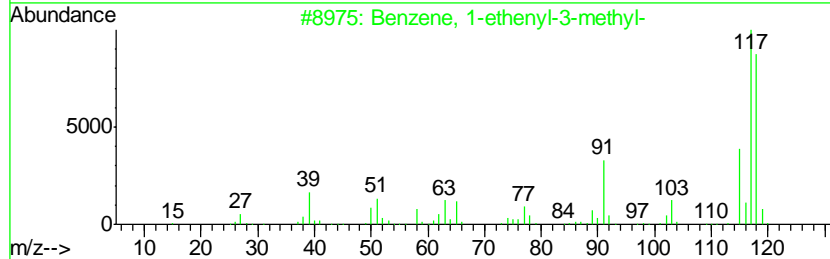
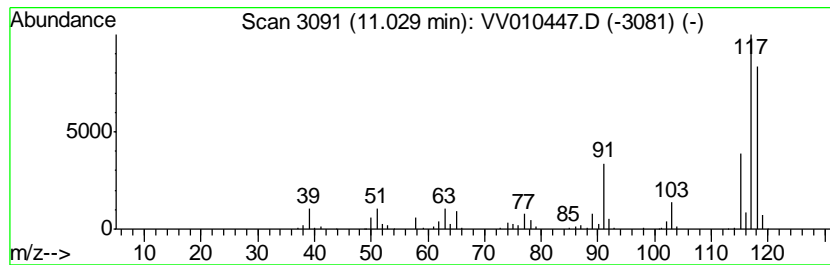
TIC Library : C:\DATABASE\NIST11.L  
 TIC Integration Parameters: LSCINT.P

\*\*\*\*\*  
 Peak Number 7 Benzene, 1-ethenyl-3-methyl- Concentration Rank 7

R.T.	EstConc	Area	Relative to ISTD	R.T.
11.03	159.42 ug/L	334657	1,4-Dichlorobenzene-d4	11.30

Hit#	of	Tentative ID	MW	MolForm	CAS#	Qual
1	5	Benzene, 1-ethenyl-3-methyl-	118	C9H10	000100-80-1	96
2		Benzene, 1-ethenyl-3-methyl-	118	C9H10	000100-80-1	96
3		Benzene, 1-ethenyl-2-methyl-	118	C9H10	000611-15-4	94
4		Benzene, cyclopropyl-	118	C9H10	000873-49-4	94
5		Benzene, 1-ethenyl-3-methyl-	118	C9H10	000100-80-1	94



Data Path : Z:\VOASRV\HPCHEM1\MSVOA V\DATA\VV042219\  
 Data File : VV010447.D  
 Acq On : 23 Apr 2019 10:27  
 Operator : SY/MD  
 Sample : K2481-07  
 Misc : 5.08G/10mL/MSVOA V/SOIL  
 ALS Vial : 1 Sample Multiplier: 1

Instrument :  
 MSVOA\_V  
 ClientSampleID :  
 GAHW2

Quant Method : Z:\VOASRV\HPCHEM1\MSVOA\_V\METHOD\SOM2VLM042219S.M  
 Quant Title : VOC Analysis

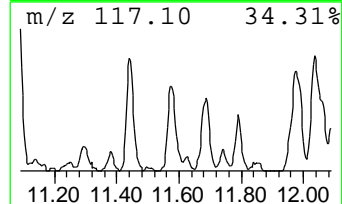
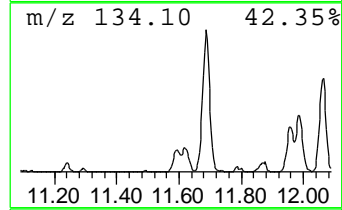
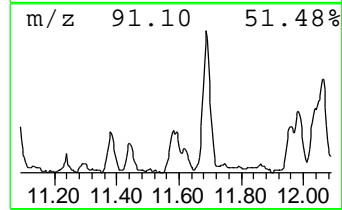
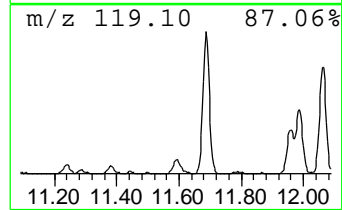
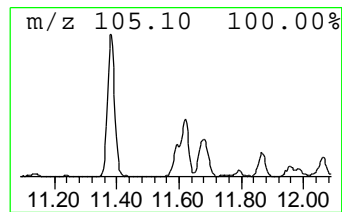
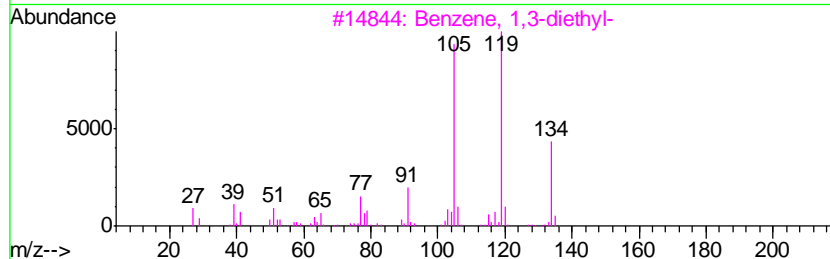
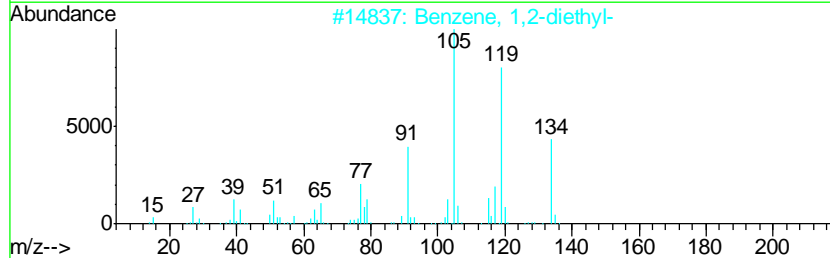
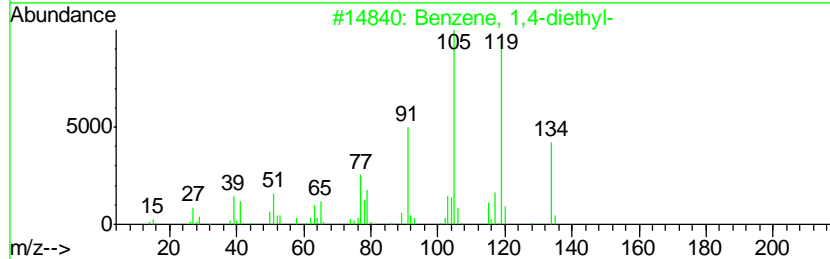
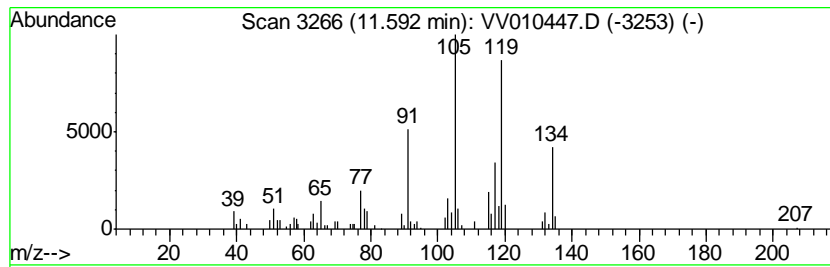
TIC Library : C:\DATABASE\NIST11.L  
 TIC Integration Parameters: LSCINT.P

\*\*\*\*\*  
 Peak Number 9 Benzene, 1,4-diethyl- Concentration Rank 12

R.T.	EstConc	Area	Relative to ISTD	R.T.
11.59	40.45 ug/L	84921	1,4-Dichlorobenzene-d4	11.30

Hit#	of	Tentative ID	MW	MolForm	CAS#	Qual
1	5	Benzene, 1,4-diethyl-	134	C10H14	000105-05-5	83
2		Benzene, 1,2-diethyl-	134	C10H14	000135-01-3	64
3		Benzene, 1,3-diethyl-	134	C10H14	000141-93-5	64
4		Benzene, 1,4-diethyl-	134	C10H14	000105-05-5	58
5		Benzene, 1,2-diethyl-	134	C10H14	000135-01-3	58



Data Path : Z:\VOASRV\HPCHEM1\MSVOA V\DATA\VV042219\  
 Data File : VV010447.D  
 Acq On : 23 Apr 2019 10:27  
 Operator : SY/MD  
 Sample : K2481-07  
 Misc : 5.08G/10mL/MSVOA V/SOIL  
 ALS Vial : 1 Sample Multiplier: 1

Instrument :  
 MSVOA\_V  
 ClientSampleID :  
 GAHW2

Quant Method : Z:\VOASRV\HPCHEM1\MSVOA\_V\METHOD\SOM2VLM042219S.M  
 Quant Title : VOC Analysis

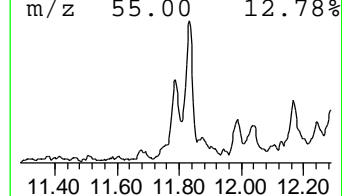
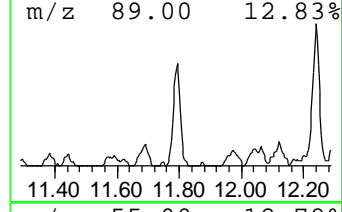
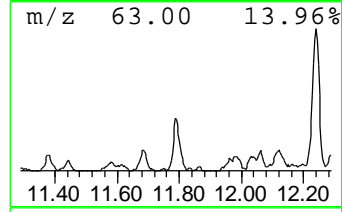
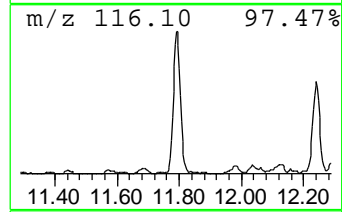
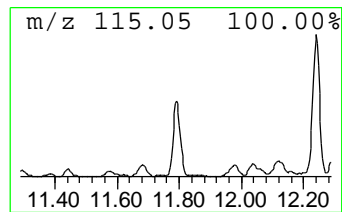
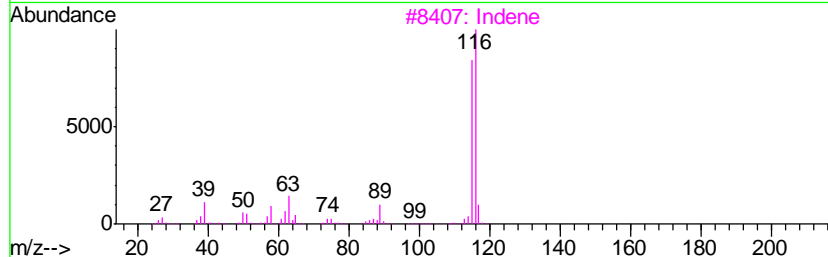
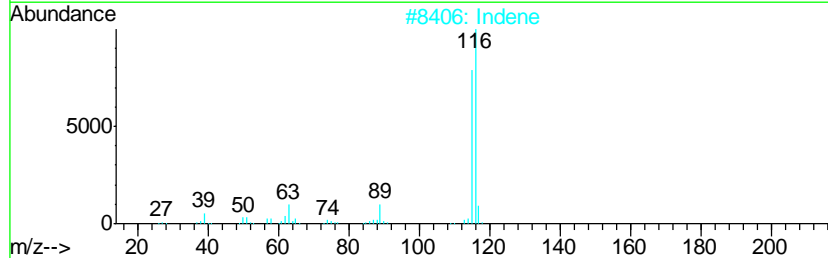
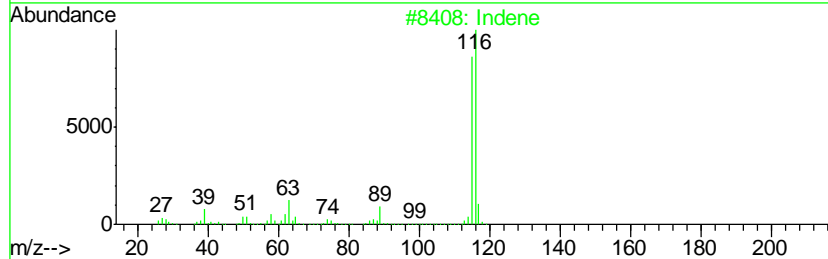
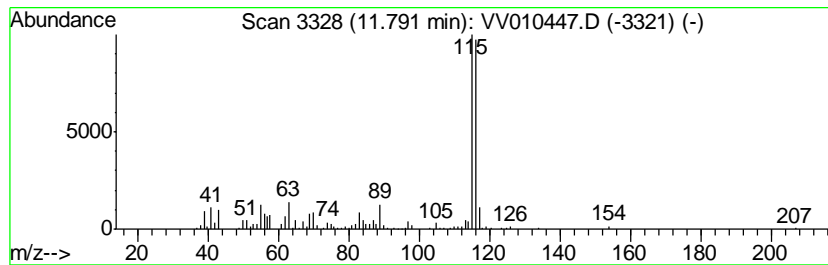
TIC Library : C:\DATABASE\NIST11.L  
 TIC Integration Parameters: LSCINT.P

\*\*\*\*\*  
 Peak Number 10 Indene Concentration Rank 9

R.T.	EstConc	Area	Relative to ISTD	R.T.
11.79	97.07 ug/L	203779	1,4-Dichlorobenzene-d4	11.30

Hit#	of	Tentative ID	MW	MolForm	CAS#	Qual
1	5	Indene	116	C9H8	000095-13-6	95
2		Indene	116	C9H8	000095-13-6	94
3		Indene	116	C9H8	000095-13-6	94
4		3-Methylphenylacetylene	116	C9H8	000766-82-5	91
5		Benzene, 1-ethynyl-4-methyl-	116	C9H8	000766-97-2	90



Data Path : Z:\VOASRV\HPCHEM1\MSVOA V\DATA\VV042219\  
 Data File : VV010447.D  
 Acq On : 23 Apr 2019 10:27  
 Operator : SY/MD  
 Sample : K2481-07  
 Misc : 5.08G/10mL/MSVOA V/SOIL  
 ALS Vial : 1 Sample Multiplier: 1

Instrument :  
 MSVOA\_V  
 ClientSampled :  
 GAHW2

Quant Method : Z:\VOASRV\HPCHEM1\MSVOA\_V\METHOD\SOM2VLM042219S.M  
 Quant Title : VOC Analysis

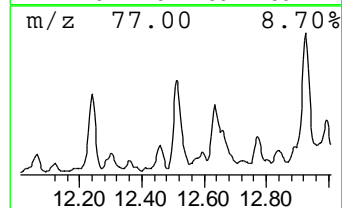
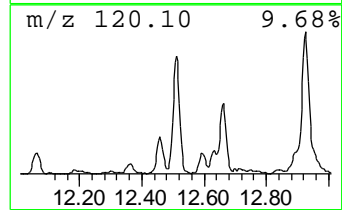
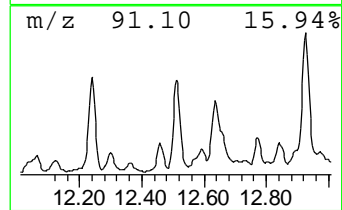
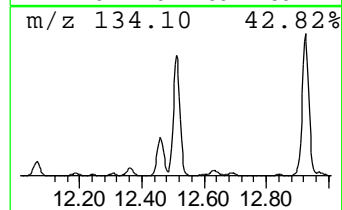
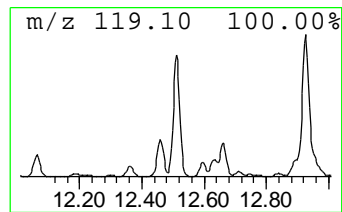
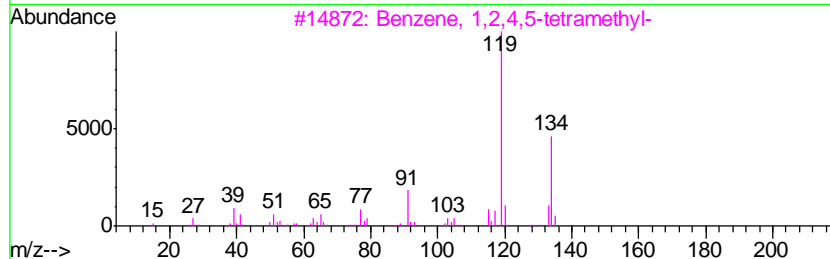
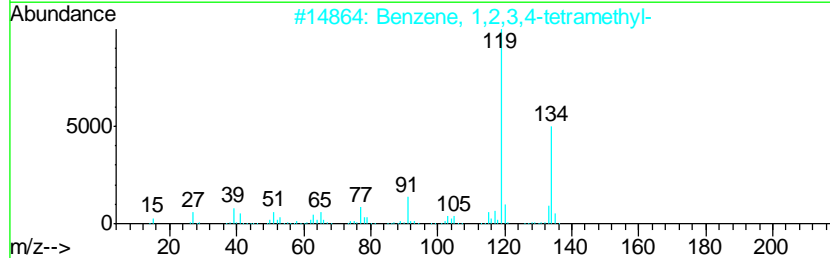
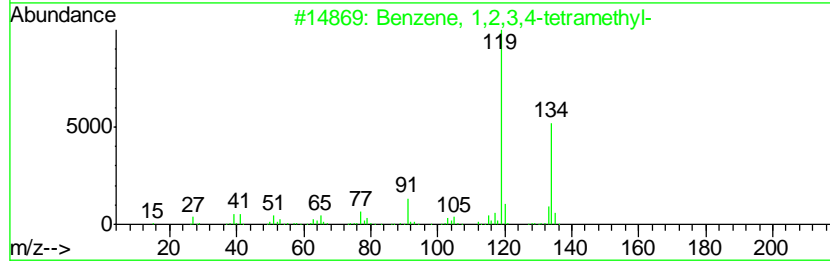
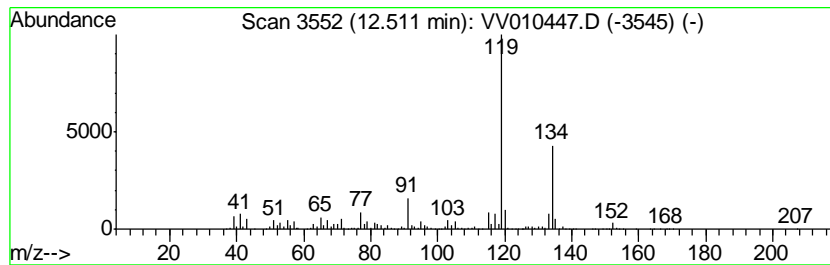
TIC Library : C:\DATABASE\NIST11.L  
 TIC Integration Parameters: LSCINT.P

\*\*\*\*\*  
 Peak Number 11 Benzene, 1,2,3,4-tetramethyl- Concentration Rank 4

R.T.	EstConc	Area	Relative to ISTD	R.T.
12.51	582.89 ug/L	1223640	1,4-Dichlorobenzene-d4	11.30

Hit#	of	Tentative ID	MW	MolForm	CAS#	Qual
1	5	Benzene, 1,2,3,4-tetramethyl-	134	C10H14	000488-23-3	97
2		Benzene, 1,2,3,4-tetramethyl-	134	C10H14	000488-23-3	97
3		Benzene, 1,2,4,5-tetramethyl-	134	C10H14	000095-93-2	97
4		Benzene, 1,2,4,5-tetramethyl-	134	C10H14	000095-93-2	95
5		Benzene, 1,2,4,5-tetramethyl-	134	C10H14	000095-93-2	95



Data Path : Z:\VOASRV\HPCHEM1\MSVOA V\DATA\VV042219\  
 Data File : VV010447.D  
 Acq On : 23 Apr 2019 10:27  
 Operator : SY/MD  
 Sample : K2481-07  
 Misc : 5.08G/10mL/MSVOA V/SOIL  
 ALS Vial : 1 Sample Multiplier: 1

Instrument :  
 MSVOA\_V  
 ClientSampleId :  
 GAHW2

Quant Method : Z:\VOASRV\HPCHEM1\MSVOA\_V\METHOD\SOM2VLM042219S.M  
 Quant Title : VOC Analysis

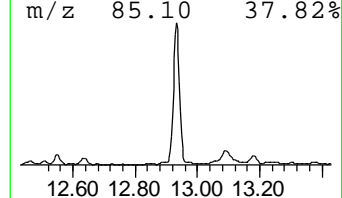
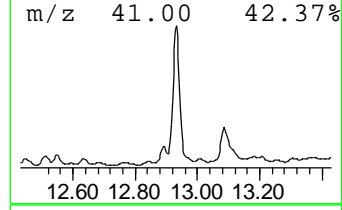
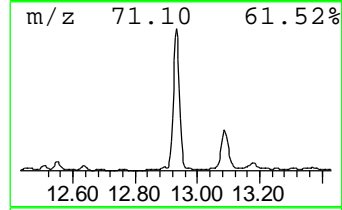
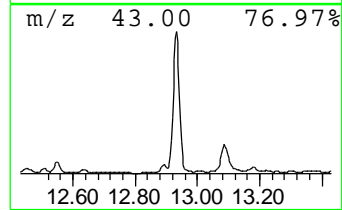
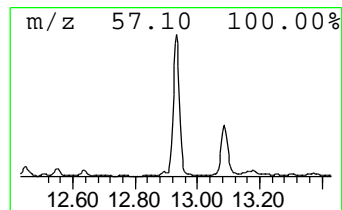
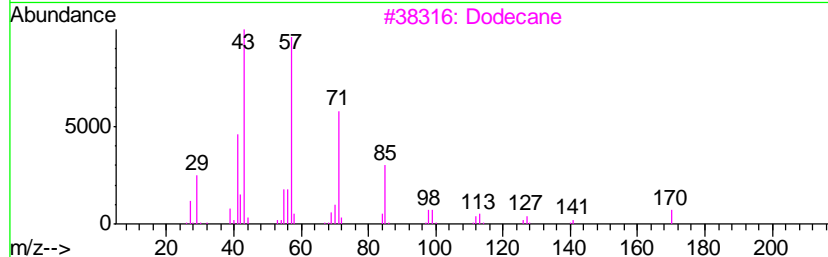
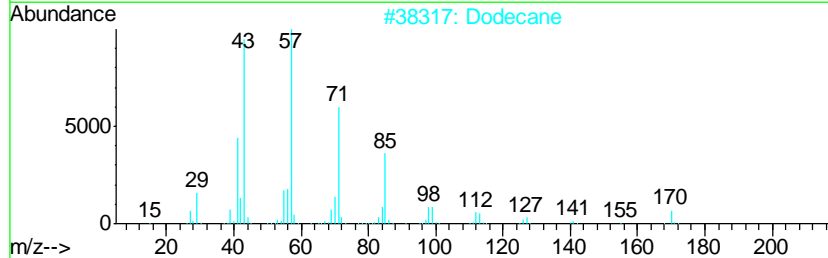
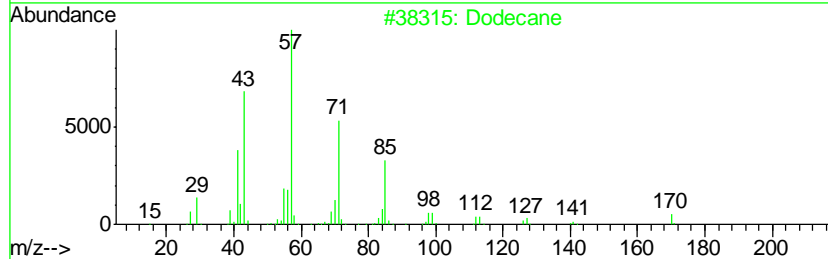
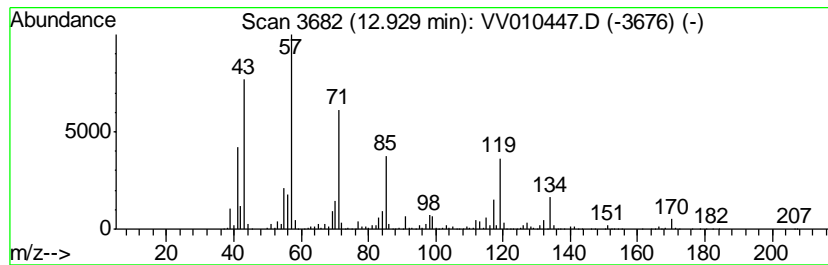
TIC Library : C:\DATABASE\NIST11.L  
 TIC Integration Parameters: LSCINT.P

\*\*\*\*\*  
 Peak Number 12 (DEL) Alkane: Straight-Chai... Concentration Rank 3

R.T.	EstConc	Area	Relative to ISTD	R.T.
12.93	2269.82 ug/L	4764890	1,4-Dichlorobenzene-d4	11.30

Hit#	of	Tentative ID	MW	MolForm	CAS#	Qual
1	5	Dodecane	170	C12H26	000112-40-3	96
2		Dodecane	170	C12H26	000112-40-3	92
3		Dodecane	170	C12H26	000112-40-3	91
4		Tetradecane	198	C14H30	000629-59-4	58
5		Dodecane	170	C12H26	000112-40-3	55



Data Path : Z:\VOASRV\HPCHEM1\MSVOA V\DATA\VV042219\  
 Data File : VV010447.D  
 Acq On : 23 Apr 2019 10:27  
 Operator : SY/MD  
 Sample : K2481-07  
 Misc : 5.08G/10mL/MSVOA V/SOIL  
 ALS Vial : 1 Sample Multiplier: 1

Instrument :  
 MSVOA\_V  
 ClientSampled :  
 GAHW2

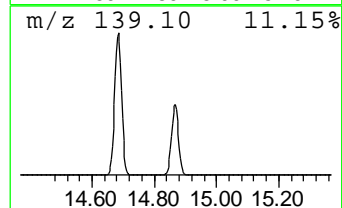
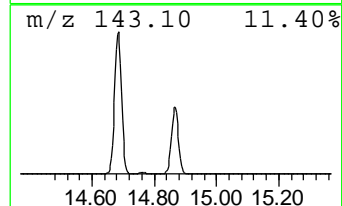
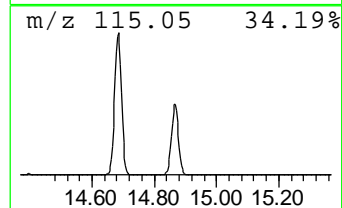
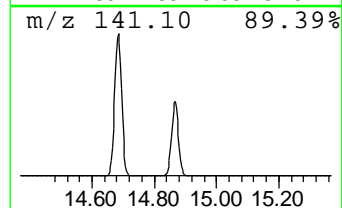
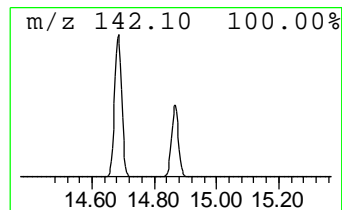
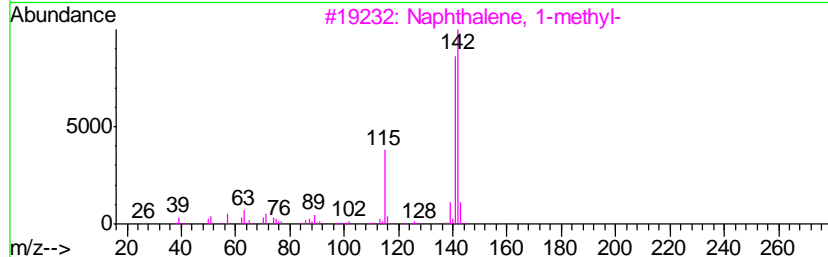
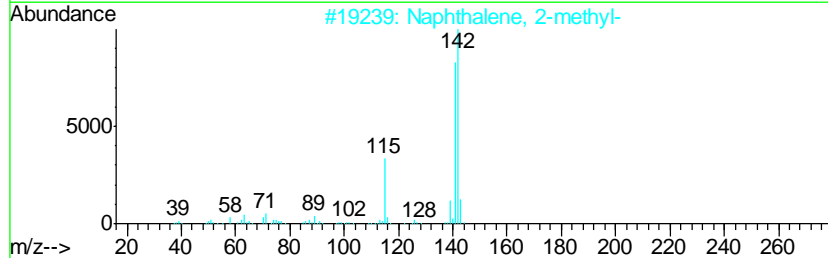
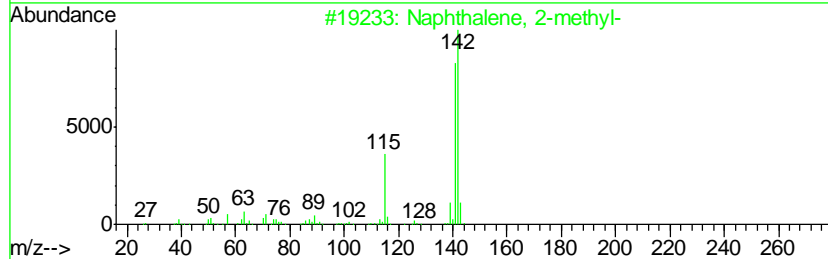
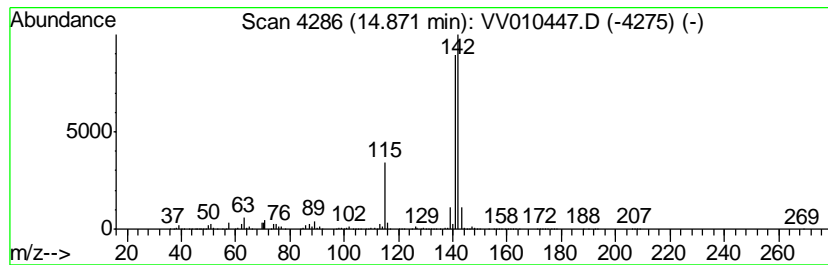
Quant Method : Z:\VOASRV\HPCHEM1\MSVOA\_V\METHOD\SOM2VLM042219S.M  
 Quant Title : VOC Analysis

TIC Library : C:\DATABASE\NIST11.L  
 TIC Integration Parameters: LSCINT.P

\*\*\*\*\*  
 Peak Number 14 Naphthalene, 1-methyl- Concentration Rank 2

R.T.	EstConc	Area	Relative to ISTD	R.T.
14.87	7361.83 ug/L	15454200	1,4-Dichlorobenzene-d4	11.30

Hit#	of	Tentative ID	MW	MolForm	CAS#	Qual
1	5	Naphthalene, 2-methyl-	142	C11H10	000091-57-6	96
2		Naphthalene, 2-methyl-	142	C11H10	000091-57-6	96
3		Naphthalene, 1-methyl-	142	C11H10	000090-12-0	96
4		Naphthalene, 2-methyl-	142	C11H10	000091-57-6	94
5		Naphthalene, 1-methyl-	142	C11H10	000090-12-0	94



Data Path : Z:\VOASRV\HPCHEM1\MSVOA V\DATA\VV042219\  
 Data File : VV010447.D  
 Acq On : 23 Apr 2019 10:27  
 Operator : SY/MD  
 Sample : K2481-07  
 Misc : 5.08G/10mL/MSVOA V/SOIL  
 ALS Vial : 1 Sample Multiplier: 1

Instrument :  
 MSVOA\_V  
 ClientSampled :  
 GAHW2

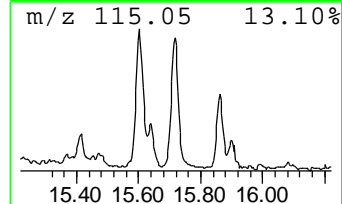
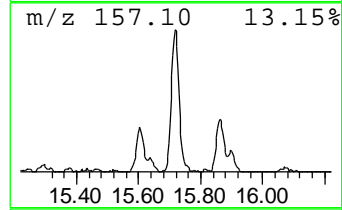
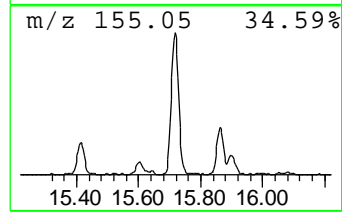
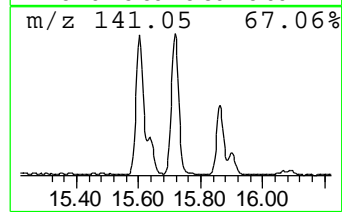
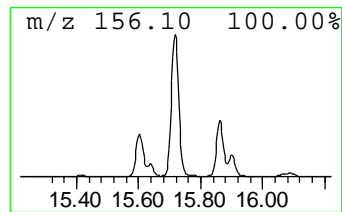
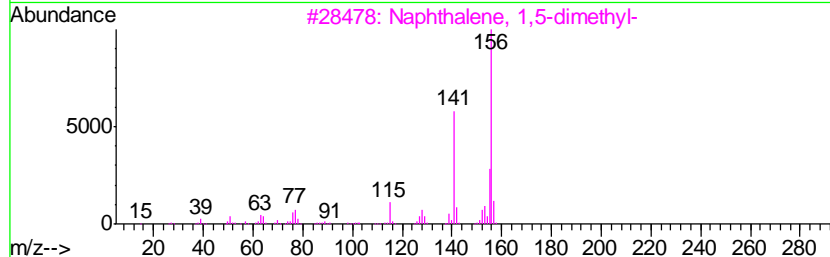
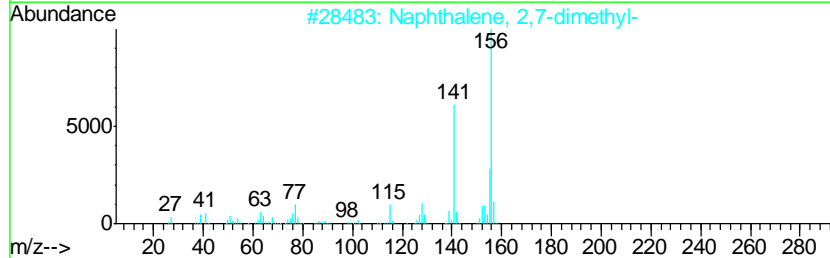
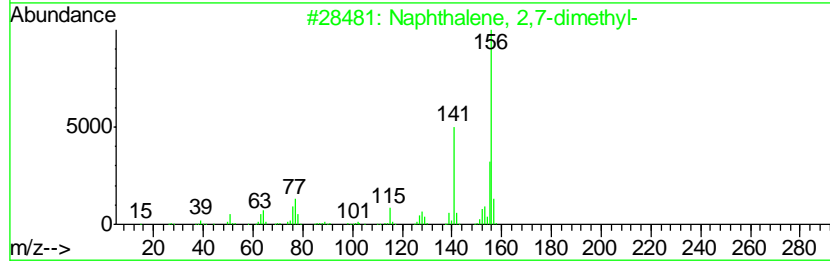
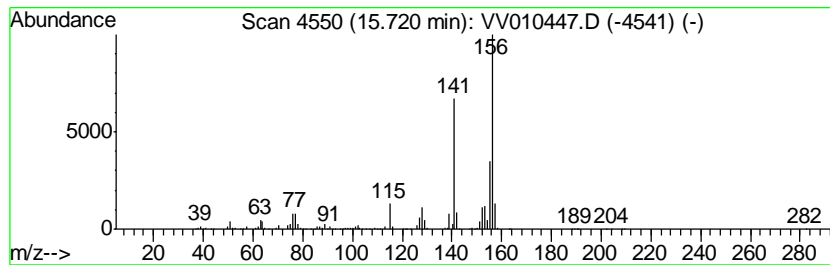
Quant Method : Z:\VOASRV\HPCHEM1\MSVOA\_V\METHOD\SOM2VLM042219S.M  
 Quant Title : VOC Analysis

TIC Library : C:\DATABASE\NIST11.L  
 TIC Integration Parameters: LSCINT.P

\*\*\*\*\*  
 Peak Number 15 Naphthalene, 2,7-dimethyl- Concentration Rank 5

R.T.	EstConc	Area	Relative to ISTD	R.T.
15.72	249.71 ug/L	524197	1,4-Dichlorobenzene-d4	11.30

Hit#	of	Tentative ID	MW	MolForm	CAS#	Qual
1	5	Naphthalene, 2,7-dimethyl-	156	C12H12	000582-16-1	97
2		Naphthalene, 2,7-dimethyl-	156	C12H12	000582-16-1	97
3		Naphthalene, 1,5-dimethyl-	156	C12H12	000571-61-9	97
4		Naphthalene, 1,4-dimethyl-	156	C12H12	000571-58-4	97
5		Naphthalene, 2,7-dimethyl-	156	C12H12	000582-16-1	97



Data Path : Z:\VOASRV\HPCHEM1\MSVOA\_V\DATA\VV042219\  
 Data File : VV010447.D  
 Acq On : 23 Apr 2019 10:27  
 Operator : SY/MD  
 Sample : K2481-07  
 Misc : 5.08G/10mL/MSVOA\_V/SOIL  
 ALS Vial : 1 Sample Multiplier: 1

Instrument :  
 MSVOA\_V  
 ClientSampleId :  
 GAHW2

Quant Method : Z:\VOASRV\HPCHEM1\MSVOA\_V\METHOD\SOM2VLM042219S.M  
 Quant Title : VOC Analysis

TIC Library : C:\DATABASE\NIST11.L  
 TIC Integration Parameters: LSCINT.P

TIC Top Hit name	RT	EstConc	Units	Response	--Internal Standard--			
					#	RT	Resp	Conc
Benzene, propyl-	10.40	12.5	ug/L	26328	3	11.30	52481	25.0
Benzene, 1-ethyl-...	10.49	157.3	ug/L	330220	3	11.30	52481	25.0
Benzene, 1,2,3-tr...	10.58	64.3	ug/L	134869	3	11.30	52481	25.0
Benzene, 1,2,4-tr...	10.78	25.6	ug/L	53723	3	11.30	52481	25.0
Benzene, 1-etheny...	11.03	159.4	ug/L	334657	3	11.30	52481	25.0
Benzene, 1,4-diet...	11.59	40.5	ug/L	84921	3	11.30	52481	25.0
Indene	11.79	97.1	ug/L	203779	3	11.30	52481	25.0
Benzene, 1,2,3,4-...	12.51	582.9	ug/L	1223640	3	11.30	52481	25.0
(DEL) Alkane: Str...	12.93	2269.8	ug/L	4764890	3	11.30	52481	25.0
Naphthalene, 1-me...	14.87	7361.8	ug/L	15454200	3	11.30	52481	25.0
Naphthalene, 2,7-...	15.72	249.7	ug/L	524197	3	11.30	52481	25.0