

Data Path : Z:\voasrv\HPCHEM1\MSVOA_V\Data\VW042222\
 Data File : VW025686.D
 Acq On : 22 Apr 2022 17:29
 Operator : SY/MD
 Sample : N2492-09DL 200X
 Misc : 25mL/MSVOA_V/WATER
 ALS Vial : 10 Sample Multiplier: 1

Instrument :
 MSVOA_V
ClientSampleId :
 EW6W1DL

Quant Time: Apr 23 02:00:45 2022
 Quant Method : Z:\voasrv\HPCHEM1\MSVOA_V\Method\SFAMVTR040822WMA.M
 Quant Title : TRACE VOA SFAM1.0
 QLast Update : Sat Apr 23 01:57:52 2022
 Response via : Initial Calibration

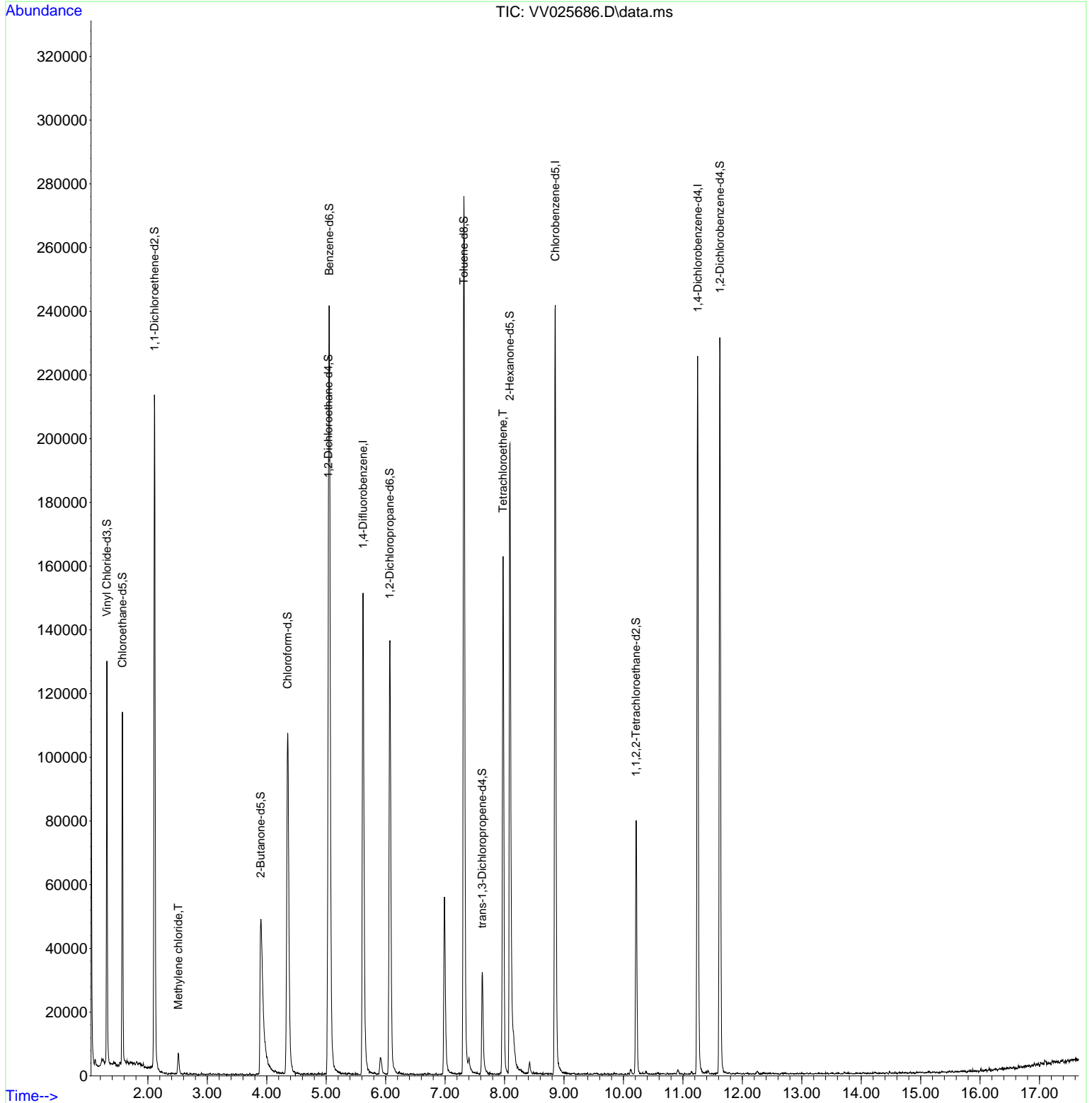
| Compound | R.T. | QIon | Response | Conc | Units | Dev(Min) |
|-------------------------------|--------|----------------|----------|--------|-----------|----------|
| Internal Standards | | | | | | |
| 1) 1,4-Difluorobenzene | 5.619 | 114 | 131318 | 5.000 | ug/L | 0.00 |
| 28) Chlorobenzene-d5 | 8.854 | 117 | 134017 | 5.000 | ug/L | 0.00 |
| 58) 1,4-Dichlorobenzene-d4 | 11.249 | 152 | 59908 | 5.000 | ug/L | 0.00 |
| System Monitoring Compounds | | | | | | |
| 4) Vinyl Chloride-d3 | 1.311 | 65 | 75516 | 6.185 | ug/L | 0.00 |
| Spiked Amount | 5.000 | Range 40 - 130 | Recovery | = | 123.800% | |
| 7) Chloroethane-d5 | 1.571 | 69 | 69438 | 5.346 | ug/L | 0.00 |
| Spiked Amount | 5.000 | Range 65 - 130 | Recovery | = | 107.000% | |
| 11) 1,1-Dichloroethene-d2 | 2.111 | 63 | 112936 | 4.618 | ug/L | 0.00 |
| Spiked Amount | 5.000 | Range 60 - 125 | Recovery | = | 92.400% | |
| 20) 2-Butanone-d5 | 3.899 | 46 | 95286 | 64.162 | ug/L | 0.00 |
| Spiked Amount | 50.000 | Range 40 - 130 | Recovery | = | 128.320% | |
| 24) Chloroform-d | 4.352 | 84 | 112251 | 6.084 | ug/L | 0.00 |
| Spiked Amount | 5.000 | Range 70 - 125 | Recovery | = | 121.600% | |
| 26) 1,2-Dichloroethane-d4 | 5.037 | 65 | 52316 | 6.581 | ug/L | 0.00 |
| Spiked Amount | 5.000 | Range 70 - 130 | Recovery | = | 131.600%# | |
| 32) Benzene-d6 | 5.053 | 84 | 225253 | 5.809 | ug/L | 0.00 |
| Spiked Amount | 5.000 | Range 70 - 125 | Recovery | = | 116.200% | |
| 36) 1,2-Dichloropropane-d6 | 6.069 | 67 | 65976 | 6.101 | ug/L | 0.00 |
| Spiked Amount | 5.000 | Range 60 - 140 | Recovery | = | 122.000% | |
| 41) Toluene-d8 | 7.317 | 98 | 184536 | 5.128 | ug/L | 0.00 |
| Spiked Amount | 5.000 | Range 70 - 130 | Recovery | = | 102.600% | |
| 43) trans-1,3-Dichloroprop... | 7.625 | 79 | 19393 | 5.335 | ug/L | 0.00 |
| Spiked Amount | 5.000 | Range 55 - 130 | Recovery | = | 106.800% | |
| 46) 2-Hexanone-d5 | 8.088 | 63 | 69184 | 54.232 | ug/L | 0.00 |
| Spiked Amount | 50.000 | Range 45 - 130 | Recovery | = | 108.460% | |
| 56) 1,1,2,2-Tetrachloroeth... | 10.214 | 84 | 36850 | 5.394 | ug/L | 0.00 |
| Spiked Amount | 5.000 | Range 65 - 120 | Recovery | = | 107.800% | |
| 66) 1,2-Dichlorobenzene-d4 | 11.622 | 152 | 56895 | 5.664 | ug/L | 0.00 |
| Spiked Amount | 5.000 | Range 80 - 120 | Recovery | = | 113.200% | |
| Target Compounds | | | | | | |
| 16) Methylene chloride | 2.513 | 84 | 2576 | 0.233 | ug/L | 85 |
| 47) Tetrachloroethene | 7.976 | 164 | 34389 | 4.179 | ug/L | 96 |

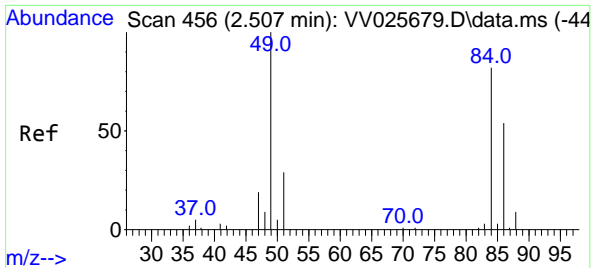
(#) = qualifier out of range (m) = manual integration (+) = signals summed

Data Path : Z:\voasrv\HPCHEM1\MSVOA_V\Data\VV042222\
 Data File : VV025686.D
 Acq On : 22 Apr 2022 17:29
 Operator : SY/MD
 Sample : N2492-09DL 200X
 Misc : 25mL/MSVOA_V/WATER
 ALS Vial : 10 Sample Multiplier: 1

Instrument :
 MSVOA_V
 ClientSampleId :
 EW6W1DL

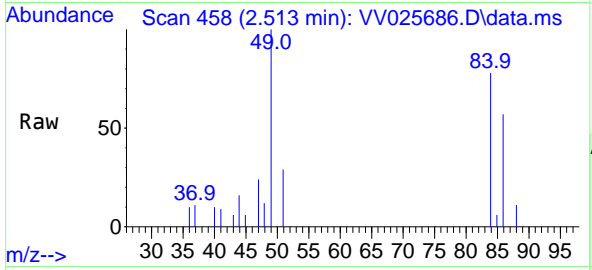
Quant Time: Apr 23 02:00:45 2022
 Quant Method : Z:\voasrv\HPCHEM1\MSVOA_V\Method\SFAMVTR040822WMA.M
 Quant Title : TRACE VOA SFAM1.0
 QLast Update : Sat Apr 23 01:57:52 2022
 Response via : Initial Calibration





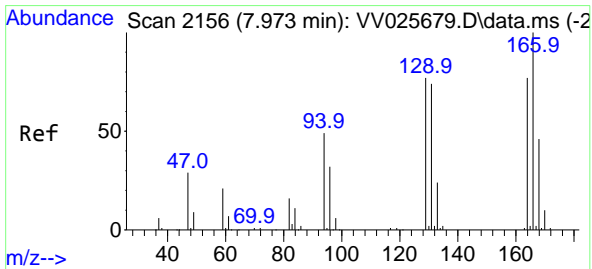
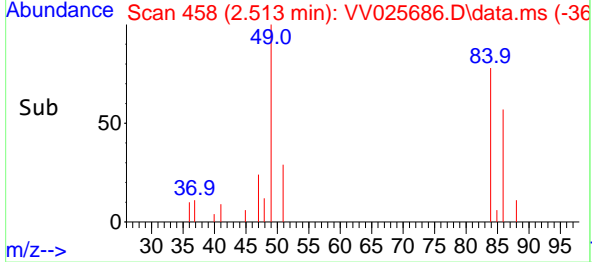
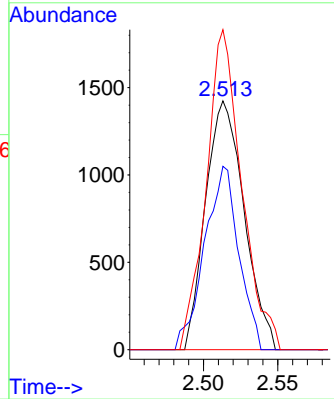
#16
 Methylene chloride
 Concen: 0.233 ug/L
 RT: 2.513 min Scan# 41
 Delta R.T. 0.007 min
 Lab File: VV025686.D
 Acq: 22 Apr 2022 17:29

Instrument : MSVOA_V
 ClientSampleId : EW6W1DL

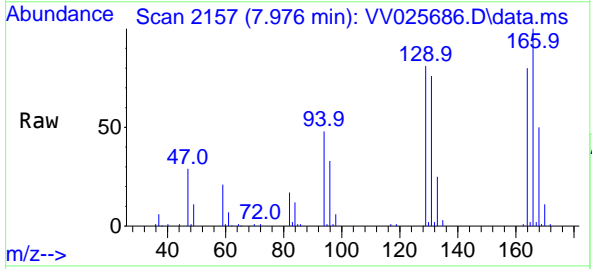


Tgt Ion: 84 Resp: 2576

| Ion | Ratio | Lower | Upper |
|-----|-------|-------|-------|
| 84 | 100 | | |
| 86 | 73.7 | 45.9 | 85.3 |
| 49 | 128.7 | 76.6 | 142.3 |



#47
 Tetrachloroethene
 Concen: 4.179 ug/L
 RT: 7.976 min Scan# 2157
 Delta R.T. 0.003 min
 Lab File: VV025686.D
 Acq: 22 Apr 2022 17:29



Tgt Ion: 164 Resp: 34389

| Ion | Ratio | Lower | Upper |
|-----|-------|-------|-------|
| 164 | 100 | | |
| 129 | 101.8 | 66.8 | 124.2 |
| 131 | 95.0 | 66.4 | 123.4 |
| 166 | 125.2 | 91.7 | 170.3 |

