

Data Path : Z:\VOASRV\HPCHEM1\MSVOA\_V\DATA\VV051419\  
 Data File : VV010864.D  
 Acq On : 14 May 2019 16:06  
 Operator : SY/MD  
 Sample : K2737-16  
 Misc : 4.81G/10ML/MSVOA\_V/SOIL  
 ALS Vial : 1 Sample Multiplier: 1

Instrument :  
 MSVOA\_V  
 ClientSampleId :  
 DB864

## Integration Parameters: LSCINT.P

Integrator: RTE  
 Smoothing : OFF  
 Sampling : 1  
 Start Thrs: 0.2  
 Stop Thrs : 0

Filtering: 5  
 Min Area: 0 % of largest Peak  
 Max Peaks: 100  
 Peak Location: TOP

If leading or trailing edge < 100 prefer < Baseline drop else tangent >  
 Peak separation: 5

Method : Z:\VOASRV\HPCHEM1\MSVOA\_V\METHOD\SOM2VLM051319S.M  
 Title : VOC Analysis

Signal : TIC

peak #	R.T. min	first scan	max scan	last scan	PK TY	peak height	corr. area	corr. % max.	% of total
1	2.123	313	321	333	rVB	41396	58012	20.73%	2.947%
2	2.428	409	416	421	rBV2	1461	2280	0.81%	0.116%
3	2.531	438	448	460	rVB2	11358	17833	6.37%	0.906%
4	2.679	483	494	502	rBV2	1615	2853	1.02%	0.145%
5	2.997	590	593	594	rBV	148	67	0.02%	0.003%
6	3.013	594	598	601	rBV	281	272	0.10%	0.014%
7	3.065	611	614	615	rBV	310	164	0.06%	0.008%
8	3.094	620	623	627	rVB2	230	142	0.05%	0.007%
9	3.235	664	667	668	rBV2	181	108	0.04%	0.005%
10	3.441	728	731	732	rBV	89	65	0.02%	0.003%
11	3.508	749	752	758	rBV2	202	188	0.07%	0.010%
12	3.650	794	796	798	rBV2	133	88	0.03%	0.004%
13	3.746	821	826	829	rBV	144	190	0.07%	0.010%
14	3.891	868	871	875	rVB	204	164	0.06%	0.008%
15	3.939	875	886	899	rBV	8345	22889	8.18%	1.163%
16	4.306	998	1000	1001	rBV	128	69	0.02%	0.004%
17	4.399	1013	1029	1057	rBV2	47761	117342	41.93%	5.960%
18	4.637	1099	1103	1105	rBV2	173	102	0.04%	0.005%
19	4.653	1105	1108	1111	rVB2	263	203	0.07%	0.010%
20	4.679	1114	1116	1121	rVB	173	121	0.04%	0.006%
21	4.701	1121	1123	1126	rVB2	145	93	0.03%	0.005%
22	4.724	1126	1130	1136	rBV2	198	221	0.08%	0.011%
23	4.759	1136	1141	1145	rBV2	192	247	0.09%	0.013%
24	4.782	1145	1148	1150	rBV2	127	91	0.03%	0.005%
25	4.859	1170	1172	1174	rVB	121	69	0.02%	0.004%
26	4.872	1174	1176	1178	rBV	168	94	0.03%	0.005%
27	4.933	1191	1195	1198	rBV2	148	168	0.06%	0.009%
28	4.987	1208	1212	1215	rBV2	143	143	0.05%	0.007%
29	5.093	1228	1245	1274	rBV2	107922	279825	100.00%	14.213%
30	5.267	1297	1299	1302	rBV	272	169	0.06%	0.009%
31	5.322	1313	1316	1317	rBV	136	88	0.03%	0.004%
32	5.357	1323	1327	1330	rBV2	205	179	0.06%	0.009%
33	5.466	1357	1361	1364	rBV2	221	230	0.08%	0.012%
34	5.544	1382	1385	1387	rBV	272	161	0.06%	0.008%

Data Path : Z:\VOASRV\HPCHEM1\MSVOA\_V\DATA\VV051419\  
 Data File : VV010864.D  
 Acq On : 14 May 2019 16:06  
 Operator : SY/MD  
 Sample : K2737-16  
 Misc : 4.81G/10ML/MSVOA\_V/SOIL  
 ALS Vial : 1 Sample Multiplier: 1

Instrument :  
 MSVOA\_V  
 ClientSampleId :  
 DB864

## Integration Parameters: LSCINT.P

Integrator: RTE  
 Smoothing : OFF  
 Sampling : 1  
 Start Thrs: 0.2  
 Stop Thrs : 0

Filtering: 5  
 Min Area: 0 % of largest Peak  
 Max Peaks: 100  
 Peak Location: TOP

If leading or trailing edge < 100 prefer < Baseline drop else tangent >  
 Peak separation: 5

Method : Z:\VOASRV\HPCHEM1\MSVOA\_V\METHOD\SOM2VLM051319S.M  
 Title : VOC Analysis

35	5.576	1392	1395	1400	rBV2	154	194	0.07%	0.010%
36	5.663	1408	1422	1454	rBV	80824	168077	60.07%	8.537%
37	5.946	1502	1510	1520	rVB4	2371	3917	1.40%	0.199%
38	5.987	1520	1523	1527	rBV2	211	238	0.09%	0.012%
39	6.019	1531	1533	1535	rBV	116	79	0.03%	0.004%
40	6.042	1537	1540	1544	rBV	234	241	0.09%	0.012%
41	6.116	1549	1563	1588	rBV	68027	141745	50.65%	7.200%
42	6.312	1620	1624	1629	rVB	352	324	0.12%	0.016%
43	6.338	1629	1632	1634	rBV2	140	115	0.04%	0.006%
44	6.434	1658	1662	1663	rBV	154	124	0.04%	0.006%
45	6.508	1682	1685	1689	rBV2	194	177	0.06%	0.009%
46	6.537	1689	1694	1700	rVB2	245	230	0.08%	0.012%
47	6.569	1700	1704	1705	rBV2	226	126	0.05%	0.006%
48	6.579	1705	1707	1710	rBV	165	128	0.05%	0.007%
49	6.659	1727	1732	1734	rBV2	187	190	0.07%	0.010%
50	6.701	1740	1745	1747	rBV3	601	482	0.17%	0.024%
51	6.765	1761	1765	1766	rBV	172	126	0.05%	0.006%
52	6.817	1777	1781	1788	rVB2	371	411	0.15%	0.021%
53	6.958	1823	1825	1828	rVB	153	98	0.04%	0.005%
54	6.978	1828	1831	1835	rBV2	229	257	0.09%	0.013%
55	7.029	1835	1847	1861	rBV2	31821	56063	20.04%	2.848%
56	7.148	1882	1884	1888	rVB2	219	128	0.05%	0.007%
57	7.187	1888	1896	1902	rBV5	1065	1838	0.66%	0.093%
58	7.302	1927	1932	1933	rBV2	198	137	0.05%	0.007%
59	7.360	1937	1950	1966	rBV	110260	200504	71.65%	10.184%
60	7.486	1987	1989	1993	rVB2	356	206	0.07%	0.010%
61	7.621	2028	2031	2034	rVB2	200	155	0.06%	0.008%
62	7.663	2034	2044	2059	rBV	21373	35607	12.72%	1.809%
63	7.823	2091	2094	2099	rBV3	222	177	0.06%	0.009%
64	7.872	2107	2109	2113	rBV2	199	139	0.05%	0.007%
65	7.900	2116	2118	2121	rBV2	166	65	0.02%	0.003%
66	7.987	2132	2145	2156	rBV2	1314	2494	0.89%	0.127%
67	8.045	2161	2163	2165	rBV2	158	114	0.04%	0.006%
68	8.132	2181	2190	2224	rBV3	27407	58582	20.94%	2.975%
69	8.257	2226	2229	2230	rBV2	252	123	0.04%	0.006%
70	8.347	2255	2257	2258	rBV	187	70	0.03%	0.004%
71	8.418	2277	2279	2281	rBV	121	74	0.03%	0.004%

Data Path : Z:\VOASRV\HPCHEM1\MSVOA\_V\DATA\VV051419\  
 Data File : VV010864.D  
 Acq On : 14 May 2019 16:06  
 Operator : SY/MD  
 Sample : K2737-16  
 Misc : 4.81G/10ML/MSVOA\_V/SOIL  
 ALS Vial : 1 Sample Multiplier: 1

Instrument :  
 MSVOA\_V  
 ClientSampleId :  
 DB864

## Integration Parameters: LSCINT.P

Integrator: RTE  
 Smoothing : OFF  
 Sampling : 1  
 Start Thrs: 0.2  
 Stop Thrs : 0

Filtering: 5  
 Min Area: 0 % of largest Peak  
 Max Peaks: 100  
 Peak Location: TOP

If leading or trailing edge < 100 prefer < Baseline drop else tangent >  
 Peak separation: 5

Method : Z:\VOASRV\HPCHEM1\MSVOA\_V\METHOD\SOM2VLM051319S.M  
 Title : VOC Analysis

72	8.579	2327	2329	2334	rVB	318	188	0.07%	0.010%
73	8.608	2334	2338	2342	rBV	297	309	0.11%	0.016%
74	8.894	2414	2427	2449	rBV	144642	246432	88.07%	12.517%
75	9.103	2489	2492	2497	rBV2	174	226	0.08%	0.011%
76	9.177	2512	2515	2516	rBV	303	192	0.07%	0.010%
77	9.235	2531	2533	2535	rBV2	137	94	0.03%	0.005%
78	9.344	2565	2567	2571	rVB2	221	150	0.05%	0.008%
79	9.373	2573	2576	2579	rBV2	191	170	0.06%	0.009%
80	9.463	2602	2604	2607	rBV	230	107	0.04%	0.005%
81	9.617	2649	2652	2656	rBV	187	145	0.05%	0.007%
82	9.926	2744	2748	2752	rBV	322	325	0.12%	0.017%
83	10.129	2805	2811	2815	rVB	896	1061	0.38%	0.054%
84	10.261	2841	2852	2869	rVB	67262	106987	38.23%	5.434%
85	10.424	2895	2903	2916	rVB2	2389	3378	1.21%	0.172%
86	10.614	2956	2962	2963	rBV	343	278	0.10%	0.014%
87	10.810	3019	3023	3024	rBV	381	322	0.12%	0.016%
88	11.190	3138	3141	3144	rVB2	516	309	0.11%	0.016%
89	11.296	3163	3174	3192	rBV	127036	205977	73.61%	10.462%
90	11.363	3192	3195	3199	rVB3	613	406	0.15%	0.021%
91	11.579	3253	3262	3271	rBV3	4008	6068	2.17%	0.308%
92	11.672	3279	3291	3308	rVB	131258	208617	74.55%	10.596%
93	11.949	3374	3377	3378	rBV	201	117	0.04%	0.006%
94	12.296	3478	3485	3495	rBV3	1890	3123	1.12%	0.159%
95	12.389	3511	3514	3516	rBV2	178	95	0.03%	0.005%
96	12.521	3547	3555	3561	rBV4	1590	2089	0.75%	0.106%
97	12.675	3601	3603	3609	rBV	211	161	0.06%	0.008%
98	13.797	3943	3952	3957	rBV4	1639	2412	0.86%	0.123%
99	14.682	4224	4227	4228	rBV	247	134	0.05%	0.007%
100	15.546	4494	4496	4499	rBV2	409	255	0.09%	0.013%

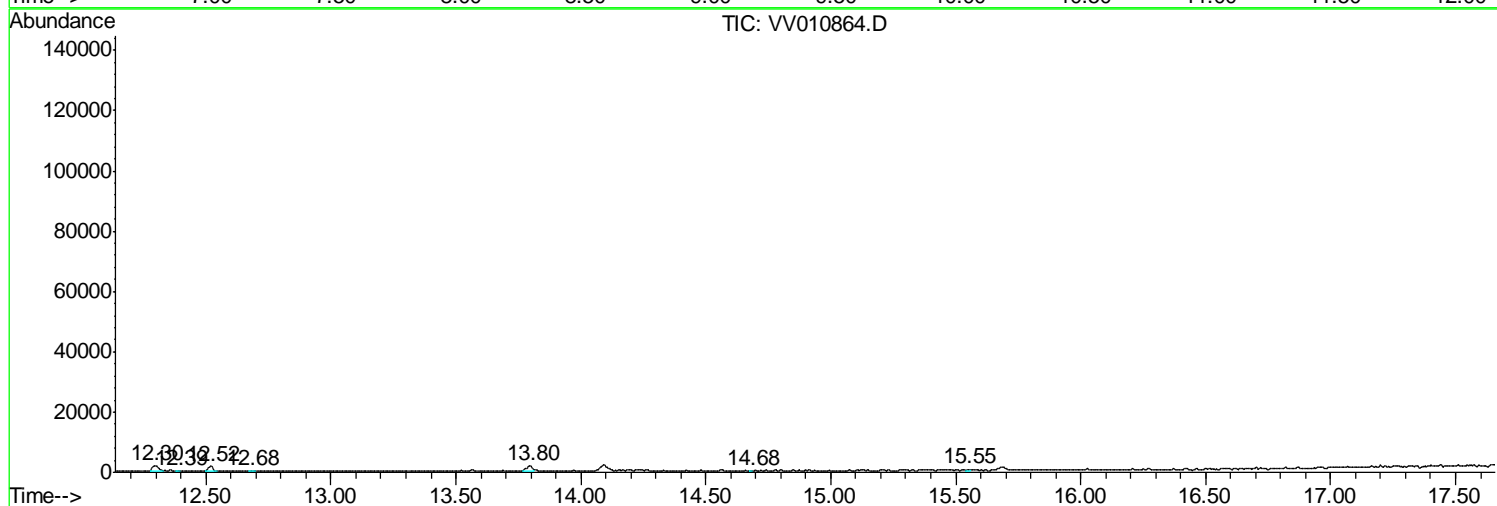
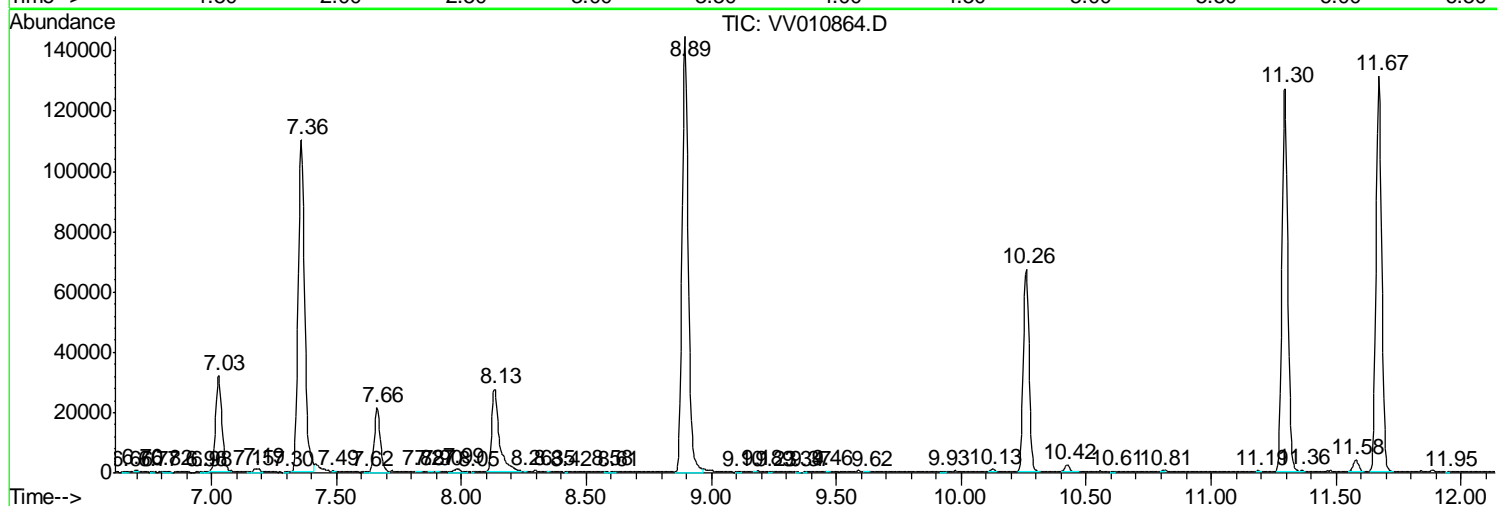
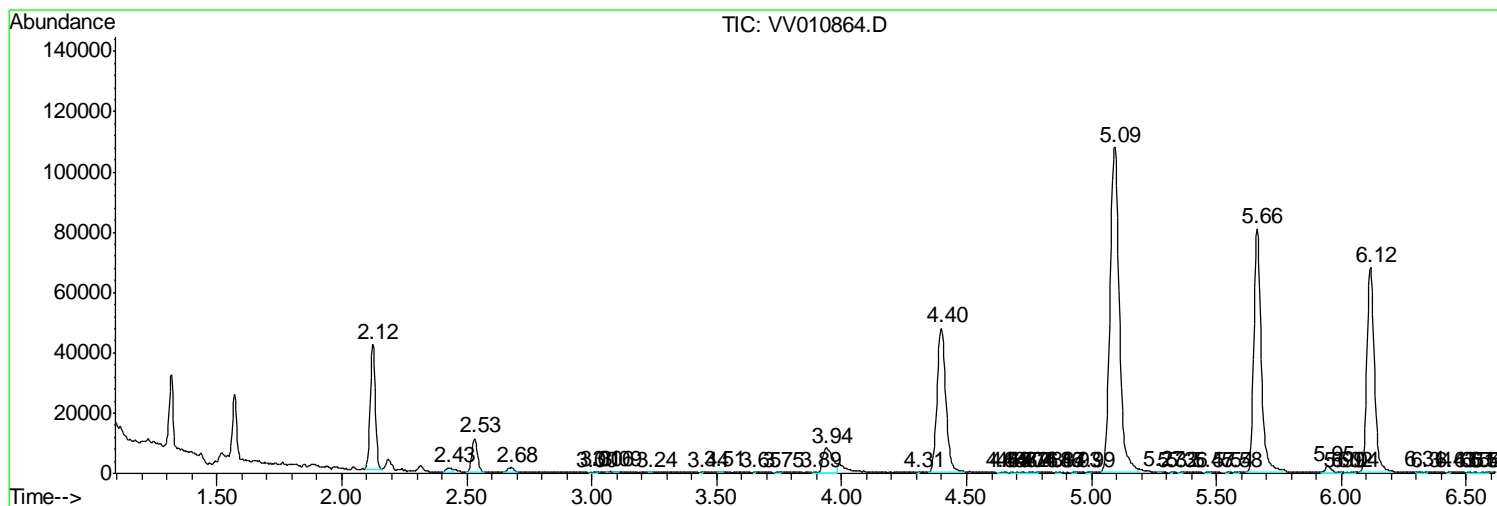
Sum of corrected areas: 1968812

Data Path : Z:\VOASRV\HPCHEM1\MSVOA\_V\DATA\VV051419\  
 Data File : VV010864.D  
 Acq On : 14 May 2019 16:06  
 Operator : SY/MD  
 Sample : K2737-16  
 Misc : 4.81G/10ML/MSVOA\_V/SOIL  
 ALS Vial : 1 Sample Multiplier: 1

**Instrument :**  
 MSVOA\_V  
**ClientSampled :**  
 DB864

Quant Method : Z:\VOASRV\HPCHEM1\MSVOA\_V\METHOD\SOM2VLM051319S.M  
 Quant Title : VOC Analysis

TIC Library : C:\DATABASE\NIST11.L  
 TIC Integration Parameters: LSCINT.P



Data Path : Z:\VOASRV\HPCHEM1\MSVOA\_V\DATA\VV051419\  
Data File : VV010864.D  
Acq On : 14 May 2019 16:06  
Operator : SY/MD  
Sample : K2737-16  
Misc : 4.81G/10ML/MSVOA\_V/SOIL  
ALS Vial : 1 Sample Multiplier: 1

Instrument :  
MSVOA\_V  
ClientSampled :  
DB864

Quant Method : Z:\VOASRV\HPCHEM1\MSVOA\_V\METHOD\SOM2VLM051319S.M  
Quant Title : VOC Analysis

TIC Library : C:\DATABASE\NIST11.L  
TIC Integration Parameters: LSCINT.P

No Library Search Compounds Detected

\*\*\*\*\*

Data Path : Z:\VOASRV\HPCHEM1\MSVOA\_V\DATA\VV051419\  
Data File : VV010864.D  
Acq On : 14 May 2019 16:06  
Operator : SY/MD  
Sample : K2737-16  
Misc : 4.81G/10ML/MSVOA\_V/SOIL  
ALS Vial : 1 Sample Multiplier: 1

Instrument :  
MSVOA\_V  
ClientSampleId :  
DB864

Quant Method : Z:\VOASRV\HPCHEM1\MSVOA\_V\METHOD\SOM2VLM051319S.M  
Quant Title : VOC Analysis

TIC Library : C:\DATABASE\NIST11.L  
TIC Integration Parameters: LSCINT.P

TIC Top Hit name	RT	EstConc	Units	Response	--Internal Standard--			
					#	RT	Resp	Conc

---