

Data Path : Z:\VOASRV\HPCHEM1\MSVOA_V\DATA\VV051419\
 Data File : VV010869.D
 Acq On : 14 May 2019 18:24
 Operator : SY/MD
 Sample : K2737-23
 Misc : 4.63G/10ML/MSVOA_V/SOIL
 ALS Vial : 1 Sample Multiplier: 1

Instrument :
 MSVOA_V
 ClientSampleId :
 DB871

Integration Parameters: LSCINT.P

Integrator: RTE
 Smoothing : OFF
 Sampling : 1
 Start Thrs: 0.2
 Stop Thrs : 0

Filtering: 5
 Min Area: 0 % of largest Peak
 Max Peaks: 100
 Peak Location: TOP

If leading or trailing edge < 100 prefer < Baseline drop else tangent >
 Peak separation: 5

Method : Z:\VOASRV\HPCHEM1\MSVOA_V\METHOD\SOM2VLM051319S.M
 Title : VOC Analysis

Signal : TIC

peak #	R.T. min	first scan	max scan	last scan	PK TY	peak height	corr. area	corr. % max.	% of total
1	1.315	65	70	80	rVB	58467	54965	11.80%	1.786%
2	1.563	141	147	155	rVB	43350	49562	10.64%	1.611%
3	2.119	311	320	333	rBV	94794	133258	28.62%	4.330%
4	2.425	407	415	420	rBV2	2830	4174	0.90%	0.136%
5	2.531	438	448	459	rVB2	11882	19238	4.13%	0.625%
6	2.756	516	518	519	rBV	224	113	0.02%	0.004%
7	3.164	641	645	648	rBV2	224	232	0.05%	0.008%
8	3.277	679	680	686	rVB2	262	194	0.04%	0.006%
9	3.303	686	688	690	rBV	203	130	0.03%	0.004%
10	3.315	690	692	695	rVV2	188	105	0.02%	0.003%
11	3.360	703	706	708	rBV2	199	151	0.03%	0.005%
12	3.418	721	724	727	rBV2	162	135	0.03%	0.004%
13	3.444	730	732	738	rVB2	284	211	0.05%	0.007%
14	3.473	738	741	748	rBV	143	183	0.04%	0.006%
15	3.569	769	771	777	rBV2	165	189	0.04%	0.006%
16	3.602	777	781	786	rVB	148	201	0.04%	0.007%
17	3.627	786	789	794	rBV2	185	219	0.05%	0.007%
18	3.669	798	802	805	rVB	301	225	0.05%	0.007%
19	3.688	805	808	811	rBV	215	150	0.03%	0.005%
20	3.708	811	814	822	rVB2	233	237	0.05%	0.008%
21	3.746	823	826	828	rBV	148	105	0.02%	0.003%
22	3.820	847	849	853	rBV2	142	97	0.02%	0.003%
23	3.939	876	886	902	rBV2	6680	21281	4.57%	0.692%
24	4.196	963	966	969	rBV2	220	169	0.04%	0.005%
25	4.335	1007	1009	1012	rBV2	238	186	0.04%	0.006%
26	4.396	1012	1028	1050	rBV2	80361	198436	42.61%	6.448%
27	4.621	1094	1098	1101	rBV2	238	208	0.04%	0.007%
28	4.666	1106	1112	1114	rBV	231	266	0.06%	0.009%
29	4.727	1129	1131	1135	rVB2	202	89	0.02%	0.003%
30	4.910	1181	1188	1192	rBV2	209	297	0.06%	0.010%
31	4.936	1192	1196	1201	rBV2	215	273	0.06%	0.009%
32	4.962	1201	1204	1207	rBV2	208	166	0.04%	0.005%
33	5.090	1227	1244	1276	rVV2	184992	465683	100.00%	15.133%
34	5.364	1326	1329	1333	rBV2	169	193	0.04%	0.006%

Data Path : Z:\VOASRV\HPCHEM1\MSVOA_V\DATA\VV051419\
 Data File : VV010869.D
 Acq On : 14 May 2019 18:24
 Operator : SY/MD
 Sample : K2737-23
 Misc : 4.63G/10ML/MSVOA_V/SOIL
 ALS Vial : 1 Sample Multiplier: 1

Instrument :
 MSVOA_V
 ClientSampleId :
 DB871

Integration Parameters: LSCINT.P

Integrator: RTE
 Smoothing : OFF
 Sampling : 1
 Start Thrs: 0.2
 Stop Thrs : 0

Filtering: 5
 Min Area: 0 % of largest Peak
 Max Peaks: 100
 Peak Location: TOP

If leading or trailing edge < 100 prefer < Baseline drop else tangent >
 Peak separation: 5

Method : Z:\VOASRV\HPCHEM1\MSVOA_V\METHOD\SOM2VLM051319S.M
 Title : VOC Analysis

35	5.412	1339	1344	1350	rBV2	219	319	0.07%	0.010%
36	5.563	1389	1391	1394	rVB2	324	168	0.04%	0.005%
37	5.598	1400	1402	1407	rVB2	212	164	0.04%	0.005%
38	5.659	1407	1421	1449	rBV	140532	291755	62.65%	9.481%
39	5.907	1492	1498	1500	rBV	344	236	0.05%	0.008%
40	5.946	1500	1510	1521	rVV3	3936	7733	1.66%	0.251%
41	5.984	1521	1522	1524	rVB	343	87	0.02%	0.003%
42	6.048	1538	1542	1544	rBV2	194	125	0.03%	0.004%
43	6.061	1544	1546	1548	rBV2	157	100	0.02%	0.003%
44	6.116	1548	1563	1586	rBV2	109360	225969	48.52%	7.343%
45	6.248	1601	1604	1609	rVB3	478	380	0.08%	0.012%
46	6.309	1620	1623	1627	rBV2	186	179	0.04%	0.006%
47	6.351	1634	1636	1637	rBV2	221	92	0.02%	0.003%
48	6.383	1643	1646	1649	rBV	175	138	0.03%	0.004%
49	6.421	1653	1658	1660	rVB	271	215	0.05%	0.007%
50	6.463	1669	1671	1675	rVB2	174	125	0.03%	0.004%
51	6.489	1675	1679	1682	rBV	189	178	0.04%	0.006%
52	6.524	1686	1690	1692	rBV2	217	207	0.04%	0.007%
53	6.572	1701	1705	1707	rBV	238	153	0.03%	0.005%
54	6.595	1710	1712	1717	rBV2	192	214	0.05%	0.007%
55	6.637	1723	1725	1728	rBV	182	86	0.02%	0.003%
56	6.659	1728	1732	1734	rBV2	167	131	0.03%	0.004%
57	6.675	1734	1737	1738	rBV	222	120	0.03%	0.004%
58	6.814	1773	1780	1784	rBV3	558	749	0.16%	0.024%
59	6.913	1807	1811	1817	rVB	311	331	0.07%	0.011%
60	6.952	1817	1823	1825	rBV	234	244	0.05%	0.008%
61	7.026	1835	1846	1866	rBV	40672	72133	15.49%	2.344%
62	7.158	1883	1887	1888	rBV	192	142	0.03%	0.005%
63	7.171	1888	1891	1893	rBV	180	153	0.03%	0.005%
64	7.238	1906	1912	1915	rBV	307	319	0.07%	0.010%
65	7.254	1915	1917	1920	rBV2	157	116	0.02%	0.004%
66	7.357	1937	1949	1969	rBV	198142	361399	77.61%	11.744%
67	7.598	2021	2024	2028	rBV2	202	155	0.03%	0.005%
68	7.662	2033	2044	2061	rVV	26233	45251	9.72%	1.470%
69	7.749	2069	2071	2074	rVB2	262	92	0.02%	0.003%
70	7.798	2083	2086	2088	rVV	226	125	0.03%	0.004%
71	7.865	2105	2107	2112	rVB3	390	284	0.06%	0.009%

Data Path : Z:\VOASRV\HPCHEM1\MSVOA_V\DATA\VV051419\
 Data File : VV010869.D
 Acq On : 14 May 2019 18:24
 Operator : SY/MD
 Sample : K2737-23
 Misc : 4.63G/10ML/MSVOA_V/SOIL
 ALS Vial : 1 Sample Multiplier: 1

Instrument :
 MSVOA_V
 ClientSampleId :
 DB871

Integration Parameters: LSCINT.P

Integrator: RTE
 Smoothing : OFF Filtering: 5
 Sampling : 1 Min Area: 0 % of largest Peak
 Start Thrs: 0.2 Max Peaks: 100
 Stop Thrs : 0 Peak Location: TOP

If leading or trailing edge < 100 prefer < Baseline drop else tangent >
 Peak separation: 5

Method : Z:\VOASRV\HPCHEM1\MSVOA_V\METHOD\SOM2VLM051319S.M
 Title : VOC Analysis

72	7.884	2112	2113	2116	rBV	202	142	0.03%	0.005%
73	7.978	2138	2142	2147	rBV2	1106	1137	0.24%	0.037%
74	8.058	2162	2167	2169	rBV2	210	178	0.04%	0.006%
75	8.135	2180	2191	2215	rBV5	17638	43352	9.31%	1.409%
76	8.261	2227	2230	2232	rBV	174	137	0.03%	0.004%
77	8.470	2292	2295	2299	rVB2	296	176	0.04%	0.006%
78	8.679	2357	2360	2364	rBV2	208	233	0.05%	0.008%
79	8.775	2387	2390	2392	rBV2	204	125	0.03%	0.004%
80	8.804	2395	2399	2401	rBV	148	150	0.03%	0.005%
81	8.894	2415	2427	2453	rBV	216836	363262	78.01%	11.805%
82	9.228	2528	2531	2533	rBV2	268	198	0.04%	0.006%
83	9.444	2596	2598	2603	rBV2	181	204	0.04%	0.007%
84	9.495	2610	2614	2616	rBV	268	184	0.04%	0.006%
85	9.849	2721	2724	2726	rBV	215	179	0.04%	0.006%
86	10.042	2779	2784	2785	rBV	183	184	0.04%	0.006%
87	10.170	2820	2824	2829	rBV2	234	288	0.06%	0.009%
88	10.260	2840	2852	2867	rBV	84554	133040	28.57%	4.323%
89	10.421	2895	2902	2914	rVB3	2632	4020	0.86%	0.131%
90	10.714	2990	2993	2996	rVB	239	127	0.03%	0.004%
91	10.807	3018	3022	3025	rBV3	706	724	0.16%	0.024%
92	10.958	3067	3069	3073	rVB2	531	321	0.07%	0.010%
93	11.154	3126	3130	3131	rBV2	327	200	0.04%	0.006%
94	11.296	3162	3174	3189	rBV	171627	276888	59.46%	8.998%
95	11.476	3224	3230	3233	rVB3	587	538	0.12%	0.017%
96	11.672	3279	3291	3308	rBV	174070	276724	59.42%	8.992%
97	12.296	3477	3485	3494	rBV3	2782	4064	0.87%	0.132%
98	13.450	3840	3844	3846	rBV	414	359	0.08%	0.012%
99	13.614	3892	3895	3896	rBV	215	126	0.03%	0.004%
100	14.093	4035	4044	4053	rBV2	4903	8332	1.79%	0.271%

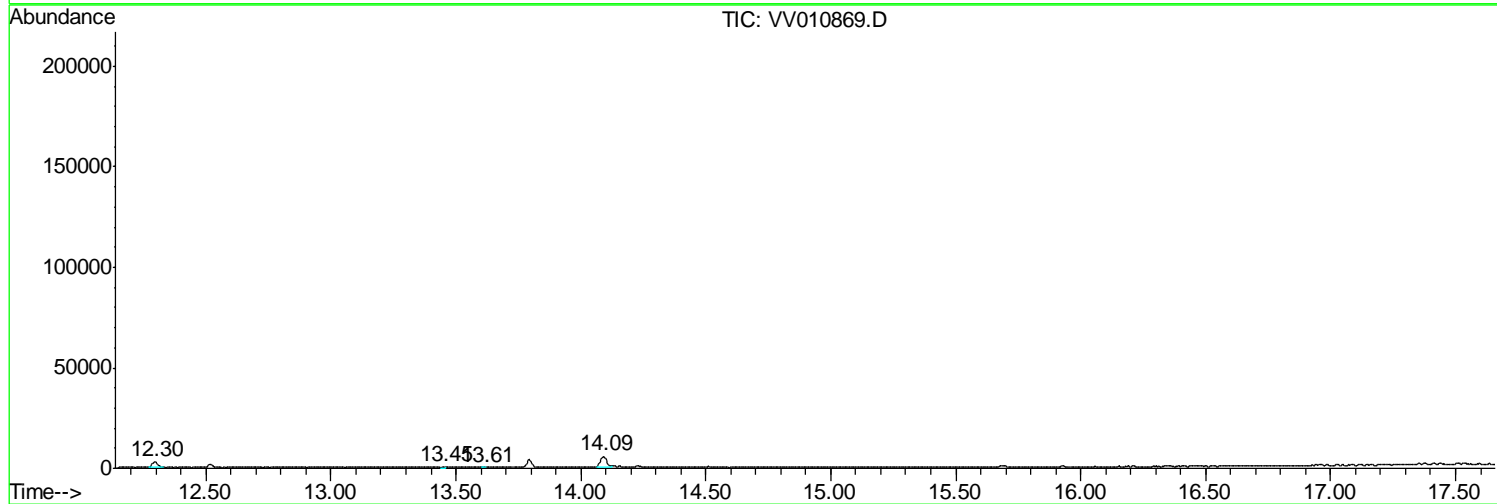
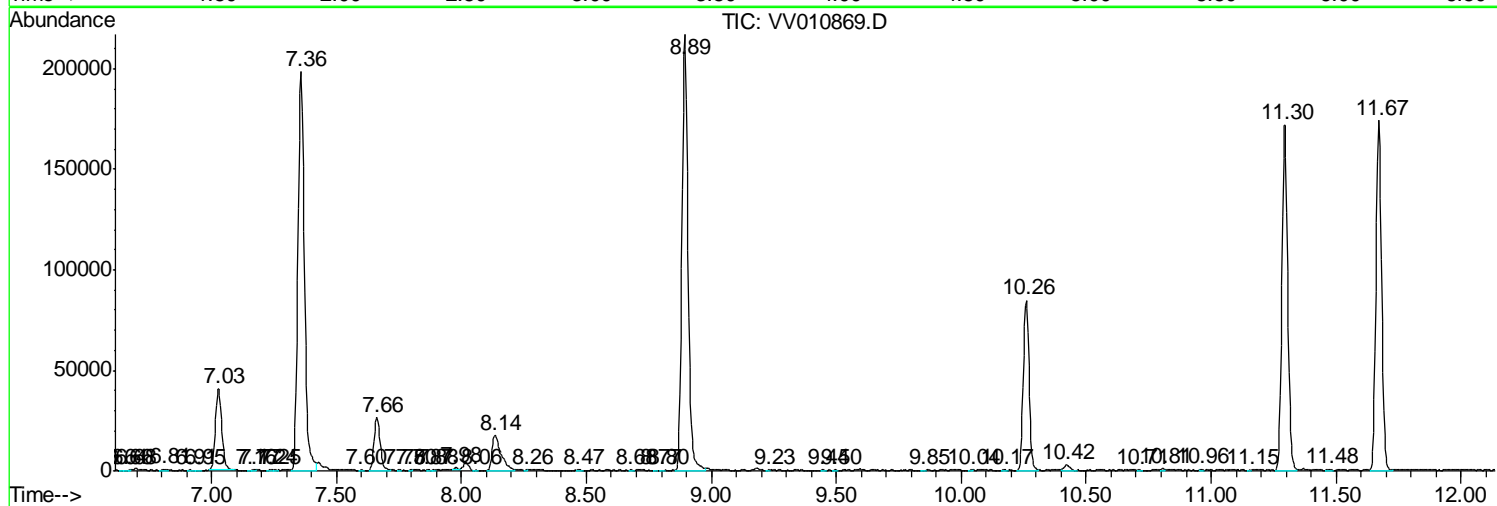
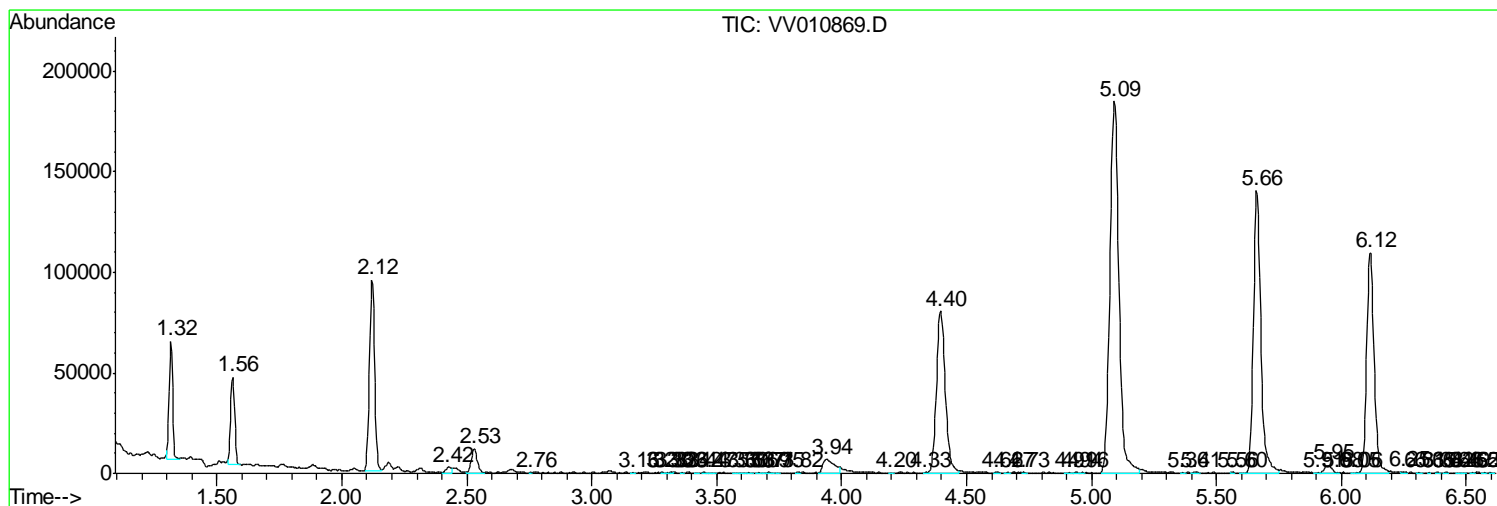
Sum of corrected areas: 3077280

Data Path : Z:\VOASRV\HPCHEM1\MSVOA_V\DATA\VV051419\
 Data File : VV010869.D
 Acq On : 14 May 2019 18:24
 Operator : SY/MD
 Sample : K2737-23
 Misc : 4.63G/10ML/MSVOA_V/SOIL
 ALS Vial : 1 Sample Multiplier: 1

Instrument :
 MSVOA_V
 ClientSampleId :
 DB871

Quant Method : Z:\VOASRV\HPCHEM1\MSVOA_V\METHOD\SOM2VLM051319S.M
 Quant Title : VOC Analysis

TIC Library : C:\DATABASE\NIST11.L
 TIC Integration Parameters: LSCINT.P



Data Path : Z:\VOASRV\HPCHEM1\MSVOA_V\DATA\VV051419\
Data File : VV010869.D
Acq On : 14 May 2019 18:24
Operator : SY/MD
Sample : K2737-23
Misc : 4.63G/10ML/MSVOA_V/SOIL
ALS Vial : 1 Sample Multiplier: 1

Instrument :
MSVOA_V
ClientSampleId :
DB871

Quant Method : Z:\VOASRV\HPCHEM1\MSVOA_V\METHOD\SOM2VLM051319S.M
Quant Title : VOC Analysis

TIC Library : C:\DATABASE\NIST11.L
TIC Integration Parameters: LSCINT.P

No Library Search Compounds Detected

Data Path : Z:\VOASRV\HPCHEM1\MSVOA_V\DATA\VV051419\
Data File : VV010869.D
Acq On : 14 May 2019 18:24
Operator : SY/MD
Sample : K2737-23
Misc : 4.63G/10ML/MSVOA_V/SOIL
ALS Vial : 1 Sample Multiplier: 1

Instrument :
MSVOA_V
ClientSampleId :
DB871

Quant Method : Z:\VOASRV\HPCHEM1\MSVOA_V\METHOD\SOM2VLM051319S.M
Quant Title : VOC Analysis

TIC Library : C:\DATABASE\NIST11.L
TIC Integration Parameters: LSCINT.P

TIC Top Hit name	RT	EstConc	Units	Response	--Internal Standard--			
					#	RT	Resp	Conc
