

Data Path : Z:\voasrv\HPCHEM1\MSVOA\_V\Data\VW051623\  
 Data File : VW031062.D  
 Acq On : 16 May 2023 18:53  
 Operator : SY/MD  
 Sample : VSTDCCC005EC  
 Misc : 25.0mL/MSVOA\_V/WATER  
 ALS Vial : 24 Sample Multiplier: 1

Instrument :  
 MSVOA\_V  
 ClientSampleId :  
 VSTD005352

Quant Time: May 17 01:46:49 2023  
 Quant Method : Z:\voasrv\HPCHEM1\MSVOA\_V\Method\SFAMVTR042823WMA.M  
 Quant Title : TRACE VOA SFAM1.0  
 QLast Update : Wed May 17 01:41:23 2023  
 Response via : Initial Calibration

Compound	R.T.	QIon	Response	Conc	Units	Dev(Min)
Internal Standards						
1) 1,4-Difluorobenzene	5.542	114	137046	5.000	ug/L	0.00
28) Chlorobenzene-d5	8.792	117	132016	5.000	ug/L	0.00
58) 1,4-Dichlorobenzene-d4	11.194	152	79125	5.000	ug/L	0.00
System Monitoring Compounds						
4) Vinyl Chloride-d3	1.281	65	39462	3.495	ug/L	0.00
Spiked Amount	5.000	Range 40 - 130	Recovery	=	69.800%	
7) Chloroethane-d5	1.539	69	38624	4.193	ug/L	0.00
Spiked Amount	5.000	Range 65 - 130	Recovery	=	83.800%	
11) 1,1-Dichloroethene-d2	2.063	65	21160	3.541	ug/L	0.00
Spiked Amount	5.000	Range 60 - 125	Recovery	=	70.800%	
20) 2-Butanone-d5	3.822	46	107686	53.782	ug/L	0.00
Spiked Amount	50.000	Range 40 - 130	Recovery	=	107.560%	
24) Chloroform-d	4.262	84	98911	4.408	ug/L	0.00
Spiked Amount	5.000	Range 70 - 125	Recovery	=	88.200%	
26) 1,2-Dichloroethane-d4	4.950	65	52706	4.620	ug/L	0.00
Spiked Amount	5.000	Range 70 - 130	Recovery	=	92.400%	
32) Benzene-d6	4.969	84	167595	4.331	ug/L	0.00
Spiked Amount	5.000	Range 70 - 125	Recovery	=	86.600%	
36) 1,2-Dichloropropane-d6	5.995	67	49612	4.409	ug/L	0.00
Spiked Amount	5.000	Range 60 - 140	Recovery	=	88.200%	
41) Toluene-d8	7.249	98	158554	4.303	ug/L	0.00
Spiked Amount	5.000	Range 70 - 130	Recovery	=	86.000%	
43) trans-1,3-Dichloroprop...	7.561	79	17506	4.150	ug/L	0.00
Spiked Amount	5.000	Range 55 - 130	Recovery	=	83.000%	
46) 2-Hexanone-d5	8.034	63	81707	55.290	ug/L	0.00
Spiked Amount	50.000	Range 45 - 130	Recovery	=	110.580%	
56) 1,1,2,2-Tetrachloroeth...	10.159	84	41735	5.117	ug/L	0.00
Spiked Amount	5.000	Range 65 - 120	Recovery	=	102.400%	
66) 1,2-Dichlorobenzene-d4	11.567	152	63149	4.281	ug/L	0.00
Spiked Amount	5.000	Range 80 - 120	Recovery	=	85.600%	
Target Compounds						
2) Dichlorodifluoromethane	1.108	85	42254	3.903	ug/L	100
3) Chloromethane	1.217	50	47702	3.754	ug/L	99
5) Vinyl chloride	1.285	62	43488	4.090	ug/L	98
6) Bromomethane	1.494	94	19830	3.915	ug/L	99
8) Chloroethane	1.555	64	27412	4.235	ug/L	98
9) Trichlorofluoromethane	1.719	101	86022	4.385	ug/L	98
10) 1,1,2-Trichloro-1,2,2-...	2.072	101	43203	4.314	ug/L	98
12) 1,1-Dichloroethene	2.076	96	37509	4.067	ug/L	88
13) Acetone	2.143	43	68004	39.761	ug/L	80
14) Carbon disulfide	2.246	76	77882	3.227	ug/L	99
15) Methyl Acetate	2.394	43	14375	4.131	ug/L #	87
16) Methylene chloride	2.455	84	42014	4.027	ug/L	94
17) Methyl tert-butyl Ether	2.715	73	82509	4.699	ug/L	98
18) trans-1,2-Dichloroethene	2.703	96	33218	3.943	ug/L	96
19) 1,1-Dichloroethane	3.121	63	72294	4.444	ug/L	99
21) 2-Butanone	3.899	43	84861	45.115	ug/L	85
22) cis-1,2-Dichloroethene	3.828	96	39146	4.404	ug/L	96
23) Bromochloromethane	4.159	128	18937	4.525	ug/L	98
25) Chloroform	4.288	83	83107	4.762	ug/L	99

Data Path : Z:\voasrv\HPCHEM1\MSVOA\_V\Data\VW051623\  
 Data File : VW031062.D  
 Acq On : 16 May 2023 18:53  
 Operator : SY/MD  
 Sample : VSTDCCC005EC  
 Misc : 25.0mL/MSVOA\_V/WATER  
 ALS Vial : 24 Sample Multiplier: 1

Instrument :  
 MSVOA\_V  
 ClientSampleId :  
 VSTD005352

Quant Time: May 17 01:46:49 2023  
 Quant Method : Z:\voasrv\HPCHEM1\MSVOA\_V\Method\SFAMVTR042823WMA.M  
 Quant Title : TRACE VOA SFAM1.0  
 QLast Update : Wed May 17 01:41:23 2023  
 Response via : Initial Calibration

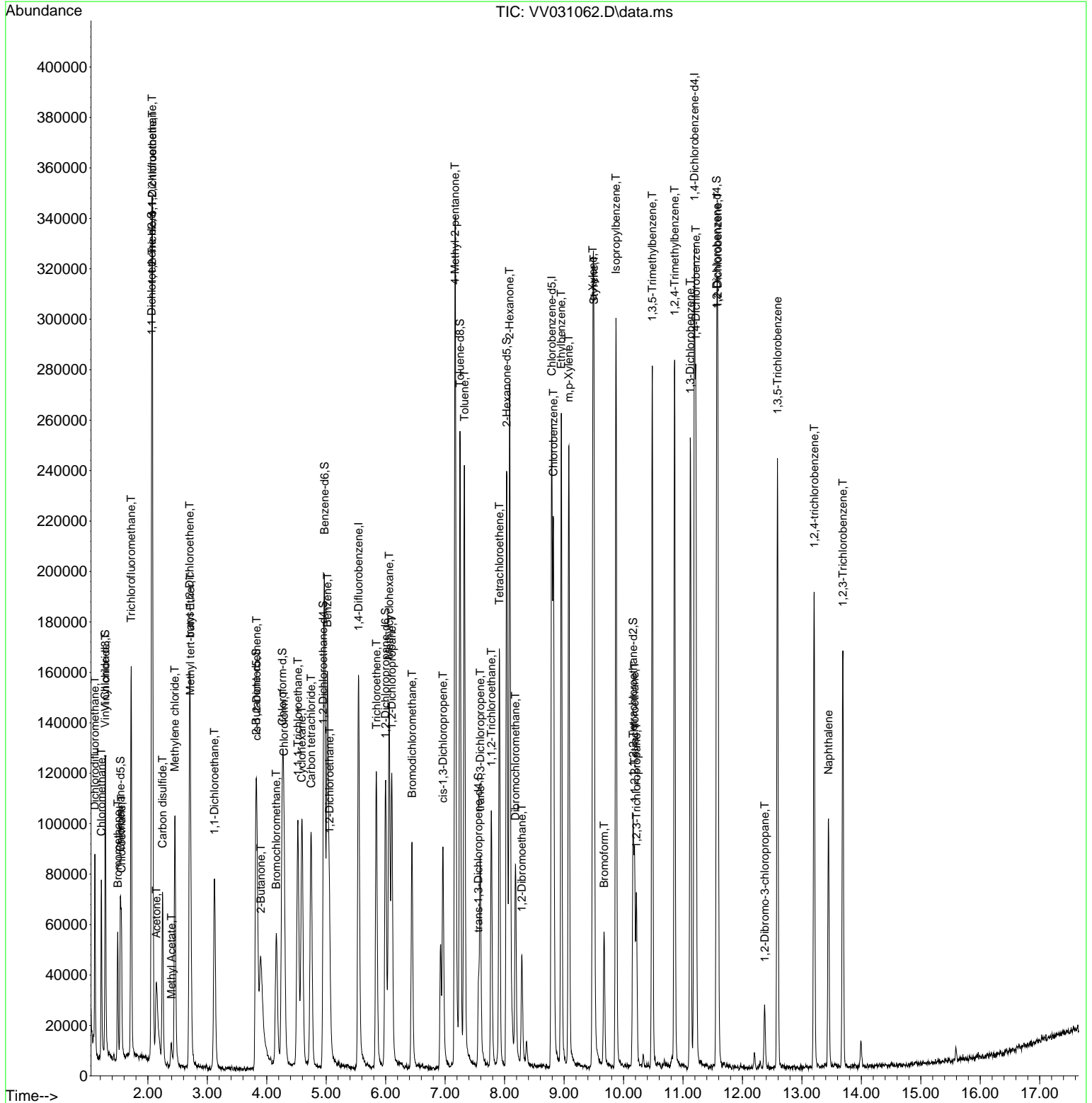
Compound	R.T.	QIon	Response	Conc	Units	Dev(Min)
27) 1,2-Dichloroethane	5.053	62	54086	4.938	ug/L	100
29) 1,1,1-Trichloroethane	4.522	97	77027	4.643	ug/L	99
30) Cyclohexane	4.587	56	47139	3.762	ug/L	97
31) Carbon tetrachloride	4.744	117	70300	4.718	ug/L	97
33) Benzene	5.021	78	152966	4.606	ug/L	100
34) Trichloroethene	5.844	95	39356	4.446	ug/L	98
35) Methylcyclohexane	6.059	83	52907	3.857	ug/L	98
37) 1,2-Dichloropropane	6.101	63	38423	4.878	ug/L #	95
38) Bromodichloromethane	6.442	83	56142	4.870	ug/L	96
39) cis-1,3-Dichloropropene	6.963	75	50704	4.298	ug/L	98
40) 4-Methyl-2-pentanone	7.169	43	232030	56.855	ug/L	99
42) Toluene	7.323	91	165613	4.632	ug/L	97
44) trans-1,3-Dichloropropene	7.590	75	45477	4.524	ug/L	89
45) 1,1,2-Trichloroethane	7.776	97	29697	5.081	ug/L	99
47) Tetrachloroethene	7.911	164	36726	4.349	ug/L	98
48) 2-Hexanone	8.085	43	179087	57.214	ug/L	99
49) Dibromochloromethane	8.181	129	38709	5.265	ug/L	94
50) 1,2-Dibromoethane	8.288	107	26412	5.067	ug/L #	99
51) Chlorobenzene	8.821	112	111864	4.615	ug/L	97
52) Ethylbenzene	8.953	91	170702	4.379	ug/L	96
53) m,p-Xylene	9.079	106	69334	4.457	ug/L	99
54) o-Xylene	9.484	106	65094	4.397	ug/L	98
55) Styrene	9.503	104	113903	4.560	ug/L	99
57) 1,1,2,2-Tetrachloroethane	10.185	83	35448	5.426	ug/L	99
59) Bromoform	9.673	173	23567	5.060	ug/L	99
60) Isopropylbenzene	9.873	105	183237	4.295	ug/L	99
61) 1,2,3-Trichloropropane	10.217	75	24191	4.867	ug/L	97
62) 1,3,5-Trimethylbenzene	10.484	105	144078	4.149	ug/L	99
63) 1,2,4-Trimethylbenzene	10.860	105	144812	4.115	ug/L	99
64) 1,3-Dichlorobenzene	11.124	146	99946	4.562	ug/L	97
65) 1,4-Dichlorobenzene	11.217	146	96148	4.350	ug/L	97
67) 1,2-Dichlorobenzene	11.587	146	89270	4.531	ug/L	97
68) 1,2-Dibromo-3-chloropr...	12.374	75	5658	4.485	ug/L	89
69) 1,3,5-Trichlorobenzene	12.590	180	73481	4.236	ug/L	98
70) 1,2,4-trichlorobenzene	13.207	180	57814	4.337	ug/L	99
71) Naphthalene	13.448	128	79145	4.140	ug/L	100
72) 1,2,3-Trichlorobenzene	13.689	180	50168	4.446	ug/L	99

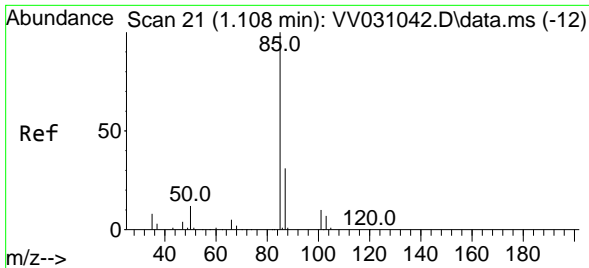
(#) = qualifier out of range (m) = manual integration (+) = signals summed

Data Path : Z:\voasrv\HPCHEM1\MSVOA\_V\Data\VV051623\  
 Data File : VV031062.D  
 Acq On : 16 May 2023 18:53  
 Operator : SY/MD  
 Sample : VSTDCCC005EC  
 Misc : 25.0mL/MSVOA\_V/WATER  
 ALS Vial : 24 Sample Multiplier: 1

**Instrument :**  
 MSVOA\_V  
**Client Sample Id :**  
 VSTD005352

Quant Time: May 17 01:46:49 2023  
 Quant Method : Z:\voasrv\HPCHEM1\MSVOA\_V\Method\SFAMVTR042823WMA.M  
 Quant Title : TRACE VOA SFAM1.0  
 QLast Update : Wed May 17 01:41:23 2023  
 Response via : Initial Calibration

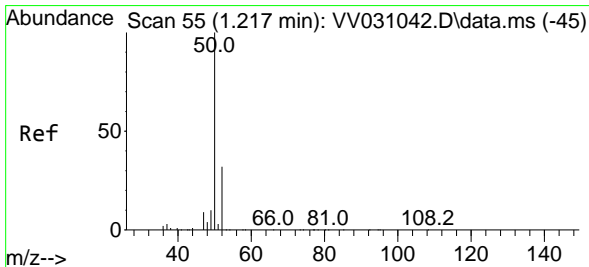
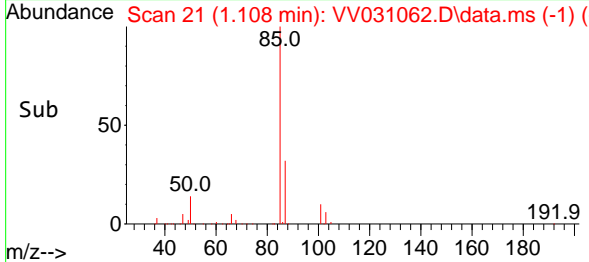
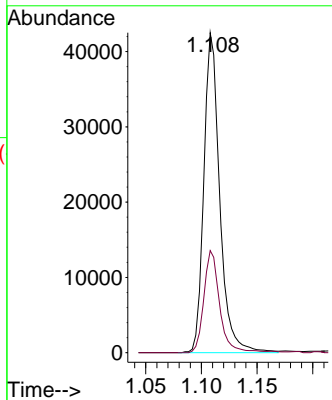
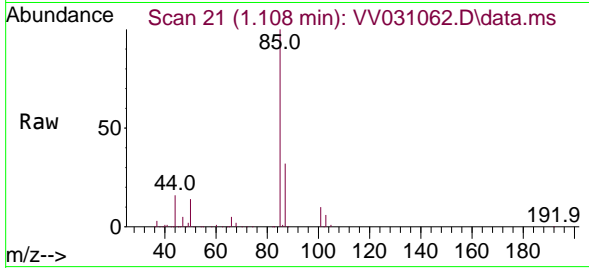




#2  
 Dichlorodifluoromethane  
 Concen: 3.903 ug/L  
 RT: 1.108 min Scan# 21  
 Delta R.T. -0.000 min  
 Lab File: VV031062.D  
 Acq: 16 May 2023 18:53

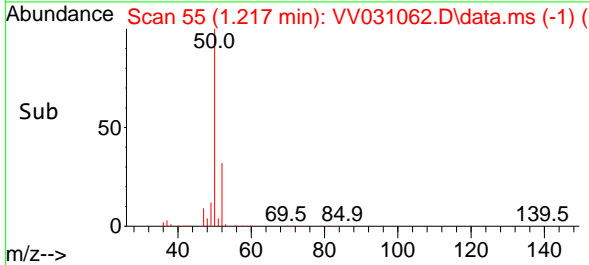
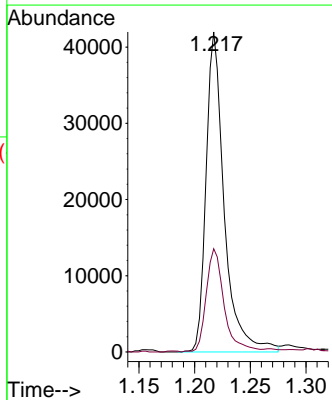
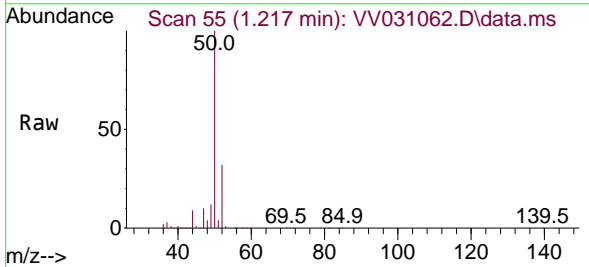
Instrument : MSVOA\_V  
 ClientSampleId : VSTD005352

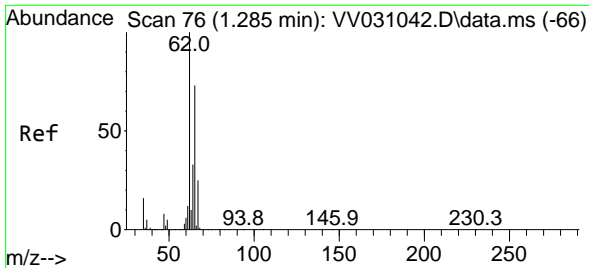
Tgt Ion: 85 Resp: 42254  
 Ion Ratio Lower Upper  
 85 100  
 87 32.0 25.8 38.6



#3  
 Chloromethane  
 Concen: 3.754 ug/L  
 RT: 1.217 min Scan# 55  
 Delta R.T. -0.000 min  
 Lab File: VV031062.D  
 Acq: 16 May 2023 18:53

Tgt Ion: 50 Resp: 47702  
 Ion Ratio Lower Upper  
 50 100  
 52 32.2 22.8 42.4

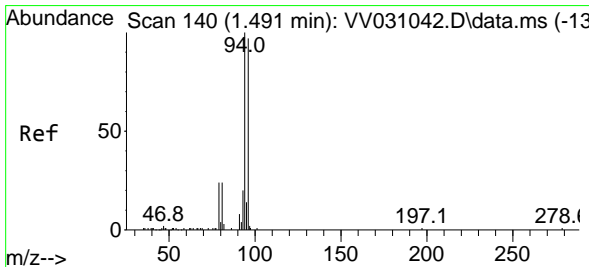
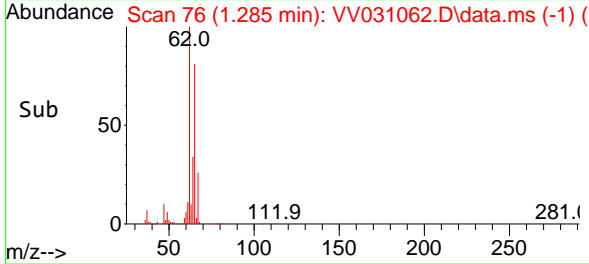
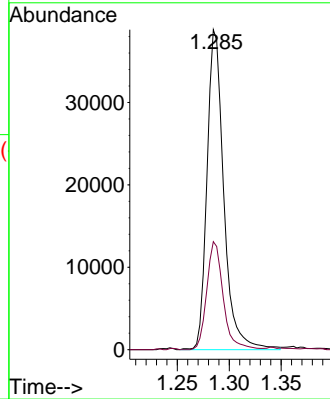
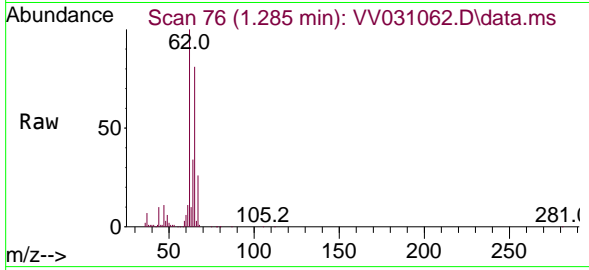




#5  
 Vinyl chloride  
 Concen: 4.090 ug/L  
 RT: 1.285 min Scan# 76  
 Delta R.T. -0.000 min  
 Lab File: VV031062.D  
 Acq: 16 May 2023 18:53

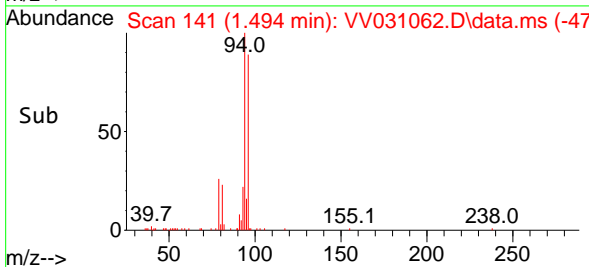
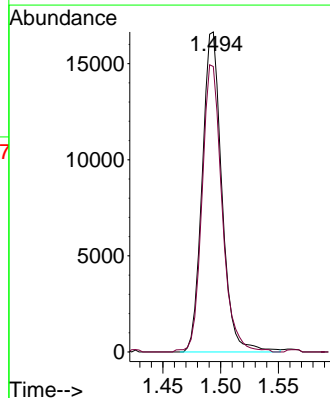
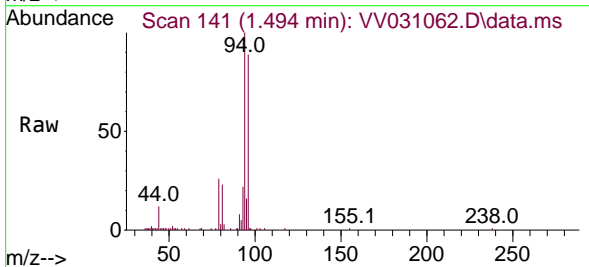
Instrument :  
 MSVOA\_V  
 ClientSampleId :  
 VSTD005352

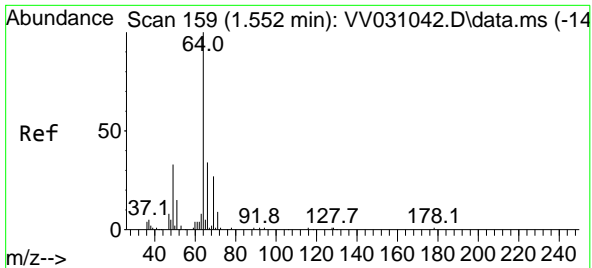
Tgt Ion: 62 Resp: 43488  
 Ion Ratio Lower Upper  
 62 100  
 64 33.8 22.8 42.4



#6  
 Bromomethane  
 Concen: 3.915 ug/L  
 RT: 1.494 min Scan# 141  
 Delta R.T. 0.003 min  
 Lab File: VV031062.D  
 Acq: 16 May 2023 18:53

Tgt Ion: 94 Resp: 19830  
 Ion Ratio Lower Upper  
 94 100  
 96 89.2 63.4 117.8

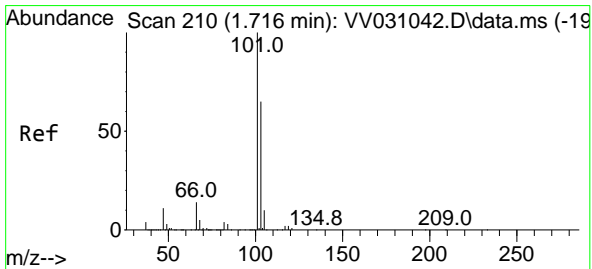
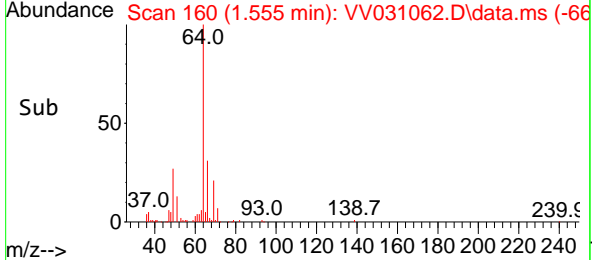
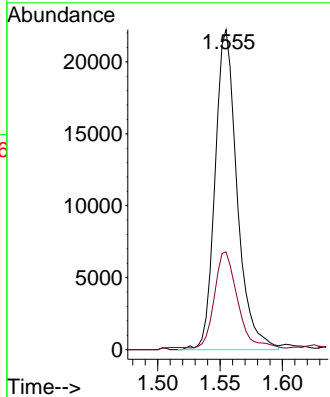
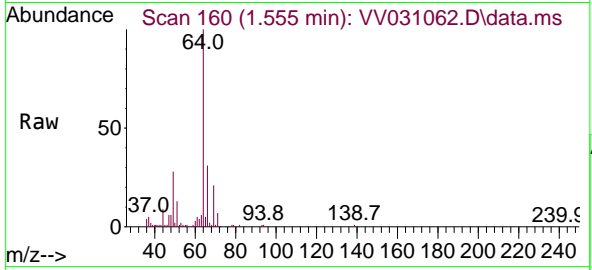




#8  
 Chloroethane  
 Concen: 4.235 ug/L  
 RT: 1.555 min Scan# 10  
 Delta R.T. 0.003 min  
 Lab File: VV031062.D  
 Acq: 16 May 2023 18:53

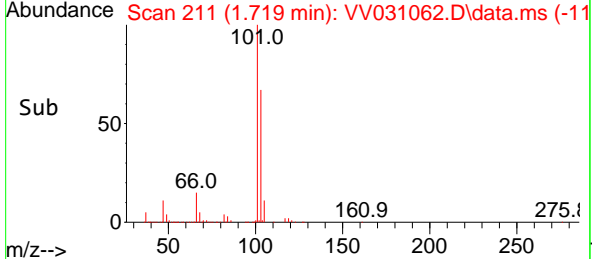
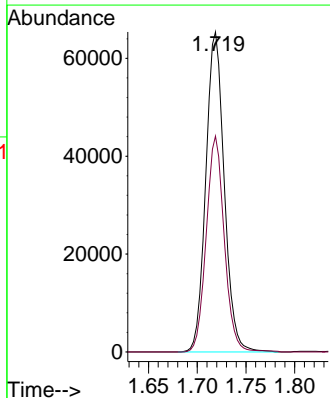
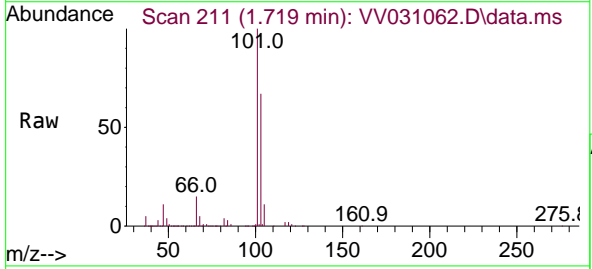
Instrument : MSVOA\_V  
 ClientSampleId : VSTD005352

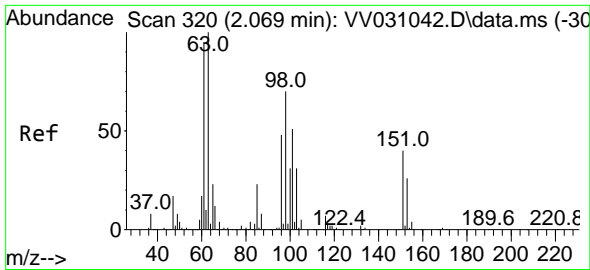
Tgt Ion: 64 Resp: 27412  
 Ion Ratio Lower Upper  
 64 100  
 66 30.5 22.1 41.1



#9  
 Trichlorofluoromethane  
 Concen: 4.385 ug/L  
 RT: 1.719 min Scan# 211  
 Delta R.T. 0.003 min  
 Lab File: VV031062.D  
 Acq: 16 May 2023 18:53

Tgt Ion:101 Resp: 86022  
 Ion Ratio Lower Upper  
 101 100  
 103 66.1 51.8 77.8

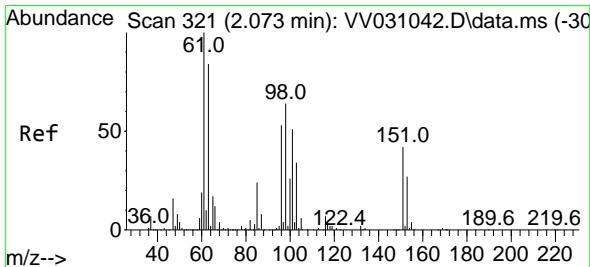
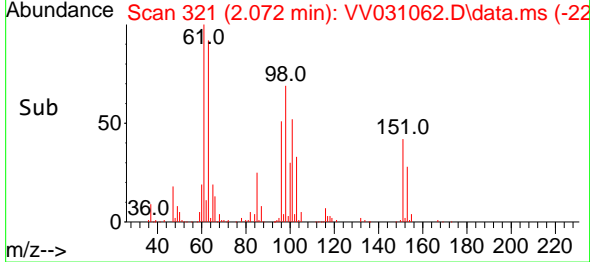
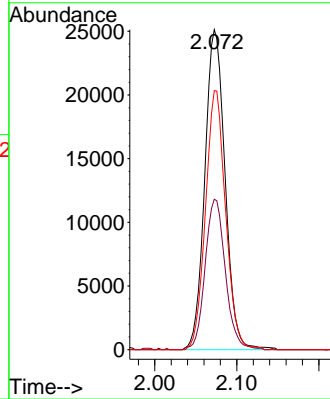
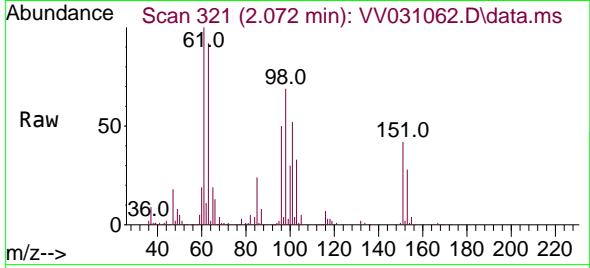




#10  
1,1,2-Trichloro-1,2,2-trifluoroethane  
Concen: 4.314 ug/L  
RT: 2.072 min Scan# 311  
Delta R.T. 0.003 min  
Lab File: VV031062.D  
Acq: 16 May 2023 18:53

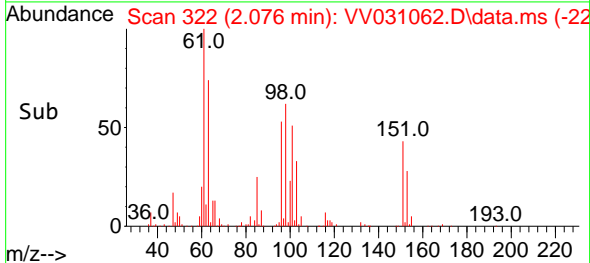
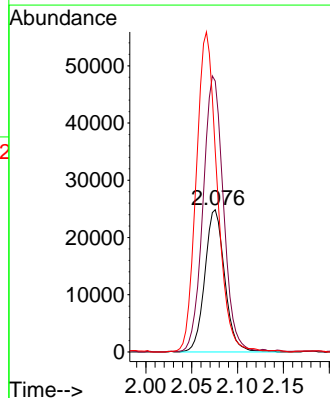
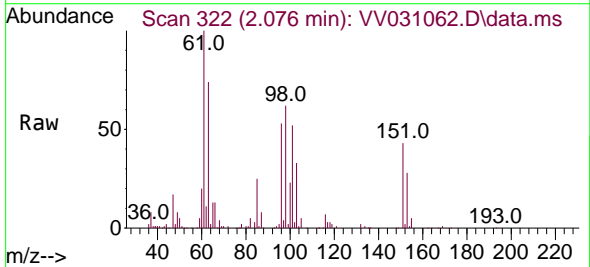
Instrument :  
MSVOA\_V  
ClientSampleId :  
VSTD005352

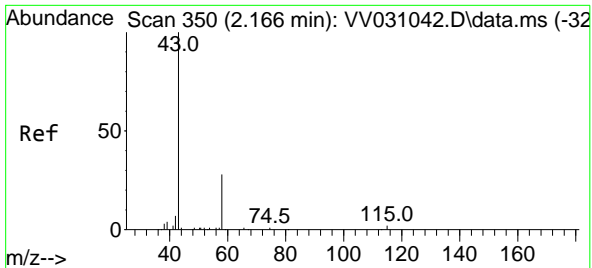
Tgt Ion:101 Resp: 43203  
Ion Ratio Lower Upper  
101 100  
85 46.9 38.7 58.1  
151 80.3 65.1 97.7



#12  
1,1-Dichloroethene  
Concen: 4.067 ug/L  
RT: 2.076 min Scan# 322  
Delta R.T. 0.003 min  
Lab File: VV031062.D  
Acq: 16 May 2023 18:53

Tgt Ion: 96 Resp: 37509  
Ion Ratio Lower Upper  
96 100  
61 190.4 135.6 251.8  
63 141.4 121.1 224.9

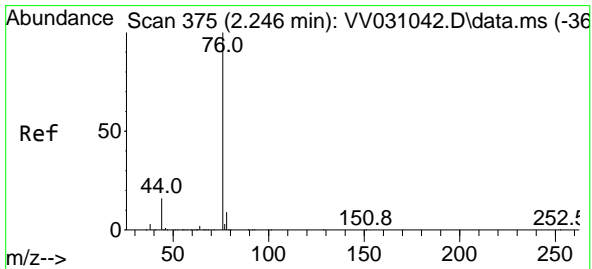
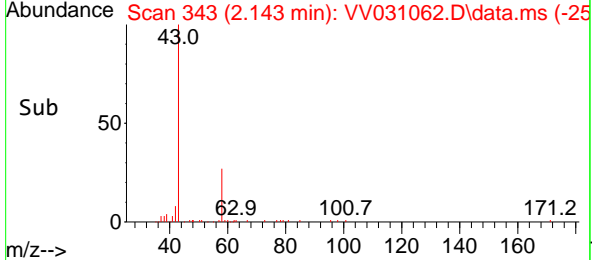
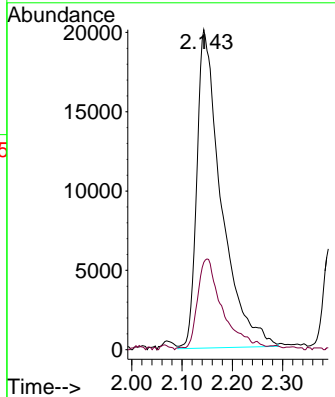
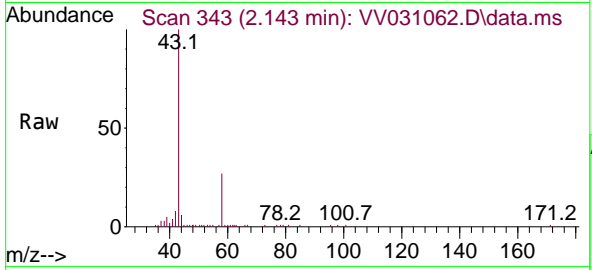




#13  
 Acetone  
 Concen: 39.761 ug/L  
 RT: 2.143 min Scan# 343  
 Delta R.T. -0.023 min  
 Lab File: VV031062.D  
 Acq: 16 May 2023 18:53

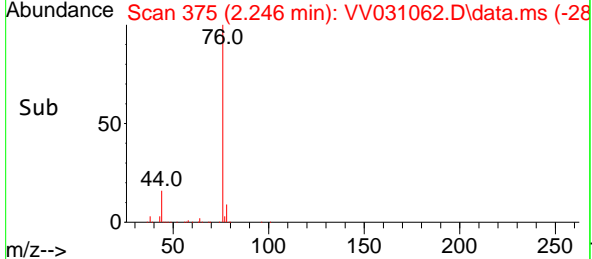
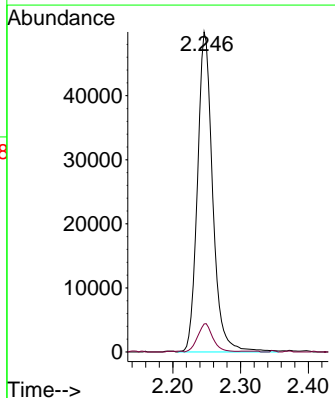
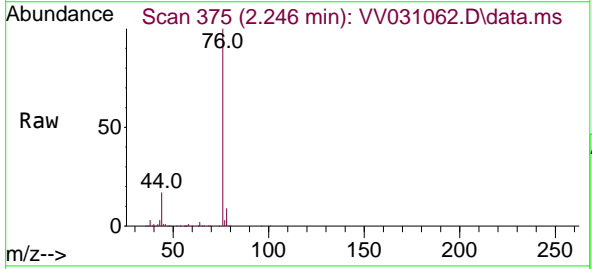
Instrument : MSVOA\_V  
 ClientSampleId : VSTD005352

Tgt Ion: 43 Resp: 68004  
 Ion Ratio Lower Upper  
 43 100  
 58 27.3 0.0 37.0

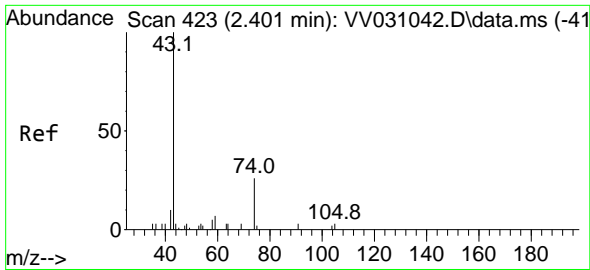


#14  
 Carbon disulfide  
 Concen: 3.227 ug/L  
 RT: 2.246 min Scan# 375  
 Delta R.T. -0.000 min  
 Lab File: VV031062.D  
 Acq: 16 May 2023 18:53

Tgt Ion: 76 Resp: 77882  
 Ion Ratio Lower Upper  
 76 100  
 78 8.8 6.8 10.2

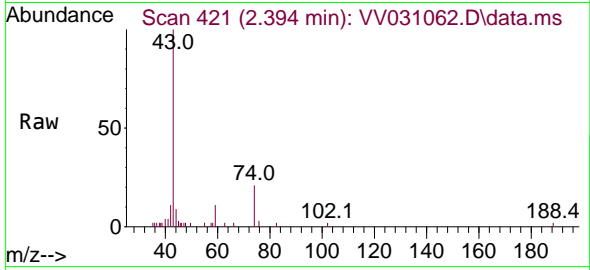




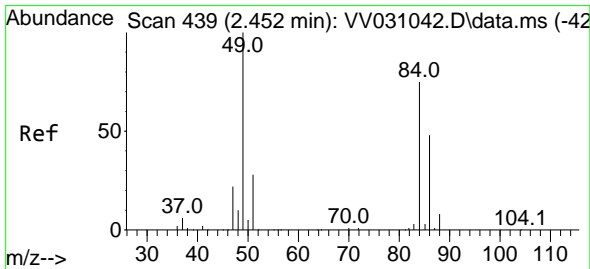
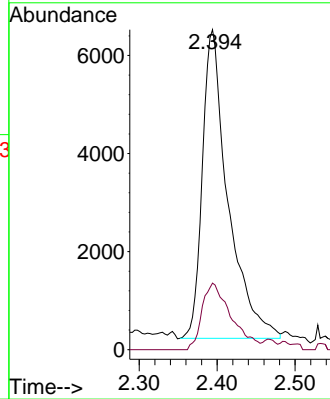
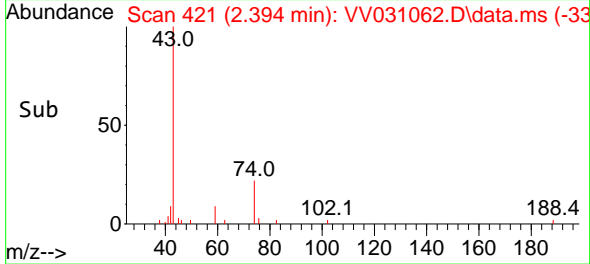


#15  
 Methyl Acetate  
 Concen: 4.131 ug/L  
 RT: 2.394 min Scan# 41  
 Delta R.T. -0.007 min  
 Lab File: VV031062.D  
 Acq: 16 May 2023 18:53

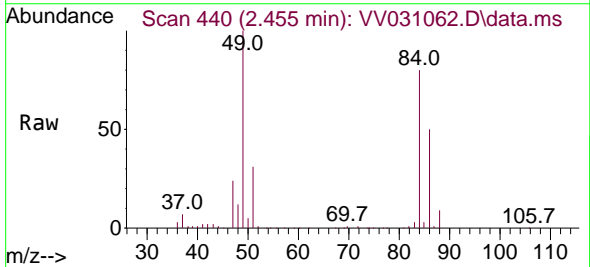
Instrument : MSVOA\_V  
 ClientSampleId : VSTD005352



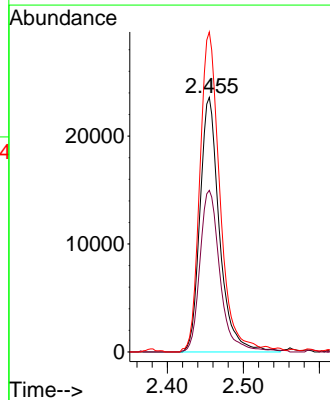
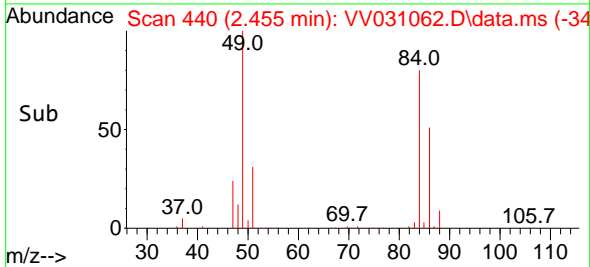
Tgt Ion: 43 Resp: 14375  
 Ion Ratio Lower Upper  
 43 100  
 74 24.5 15.0 22.6#

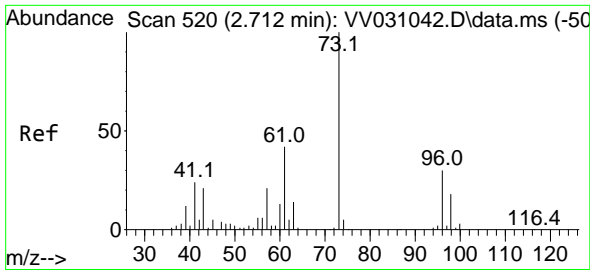


#16  
 Methylene chloride  
 Concen: 4.027 ug/L  
 RT: 2.455 min Scan# 440  
 Delta R.T. 0.003 min  
 Lab File: VV031062.D  
 Acq: 16 May 2023 18:53



Tgt Ion: 84 Resp: 42014  
 Ion Ratio Lower Upper  
 84 100  
 86 63.5 46.1 85.5  
 49 125.7 94.3 175.1

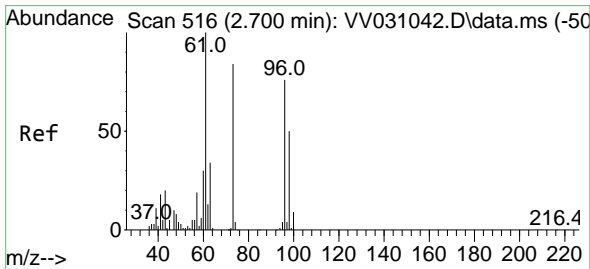
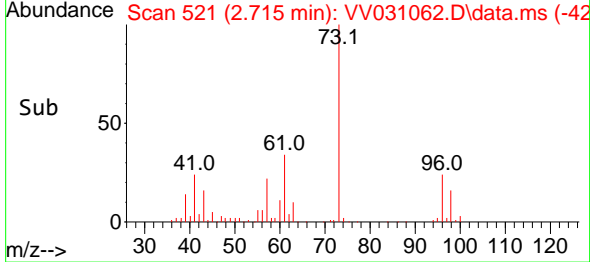
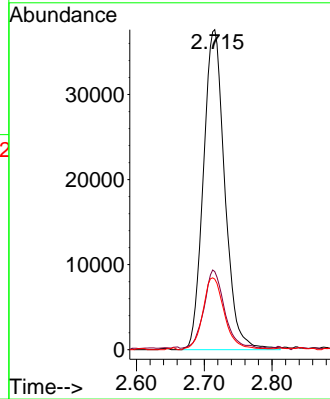
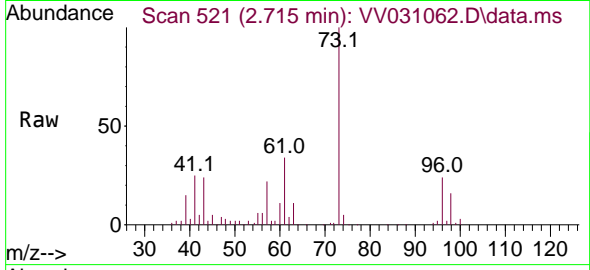




#17  
 Methyl tert-butyl Ether  
 Concen: 4.699 ug/L  
 RT: 2.715 min Scan# 517  
 Delta R.T. 0.003 min  
 Lab File: VV031062.D  
 Acq: 16 May 2023 18:53

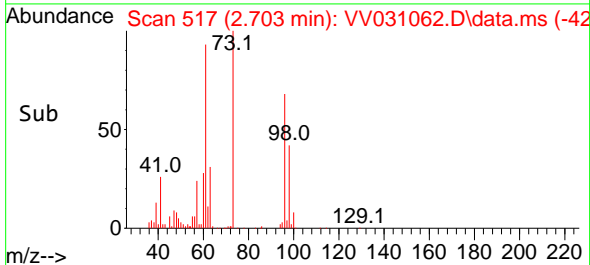
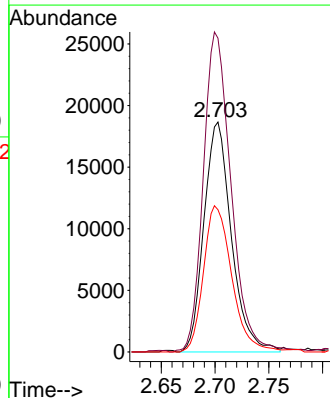
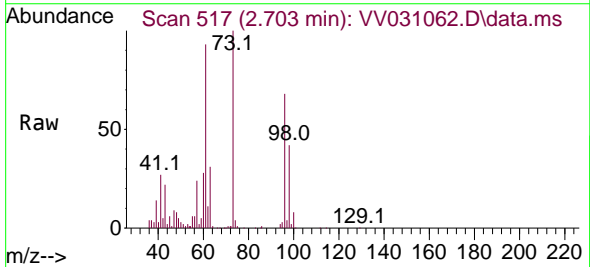
Instrument : MSVOA\_V  
 ClientSampleId : VSTD005352

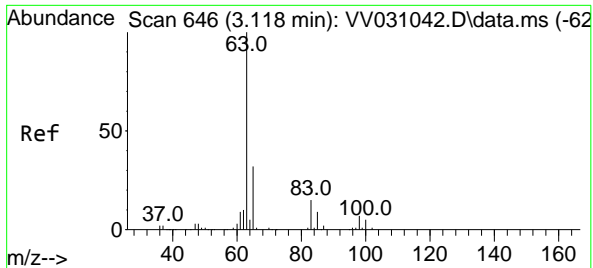
Tgt Ion: 73 Resp: 82509  
 Ion Ratio Lower Upper  
 73 100  
 43 23.0 19.9 29.9  
 57 22.7 18.2 27.4



#18  
 trans-1,2-Dichloroethene  
 Concen: 3.943 ug/L  
 RT: 2.703 min Scan# 517  
 Delta R.T. 0.003 min  
 Lab File: VV031062.D  
 Acq: 16 May 2023 18:53

Tgt Ion: 96 Resp: 33218  
 Ion Ratio Lower Upper  
 96 100  
 61 136.5 98.9 183.7  
 98 61.9 46.0 85.4



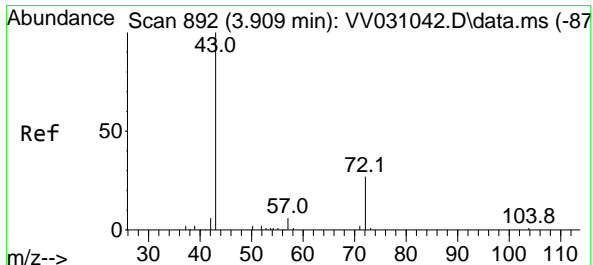
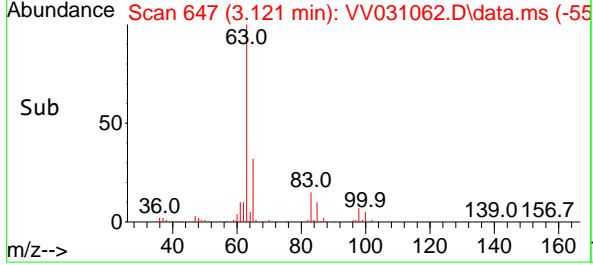
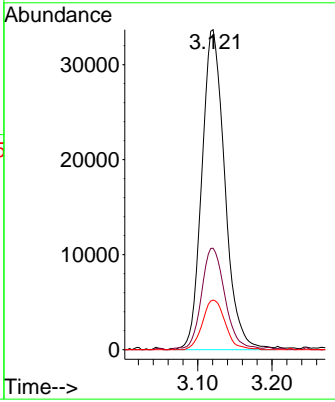
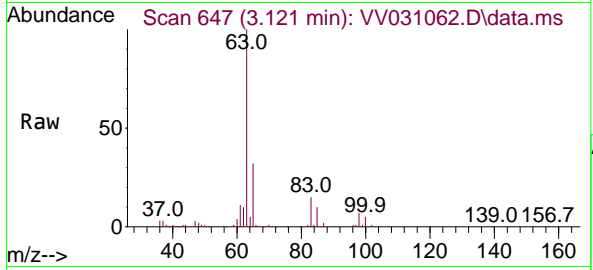


#19  
 1,1-Dichloroethane  
 Concen: 4.444 ug/L  
 RT: 3.121 min Scan# 647  
 Delta R.T. 0.003 min  
 Lab File: VV031062.D  
 Acq: 16 May 2023 18:53

Instrument : MSVOA\_V  
 ClientSampleId : VSTD005352

Tgt Ion: 63 Resp: 72294

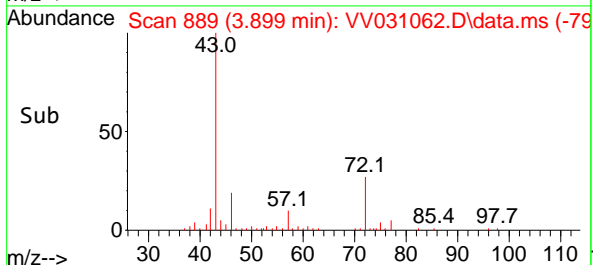
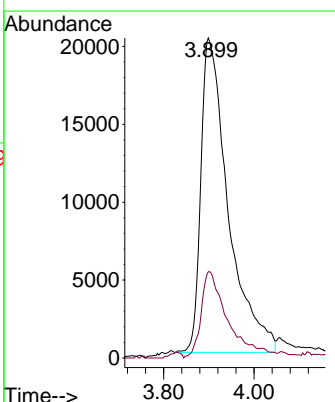
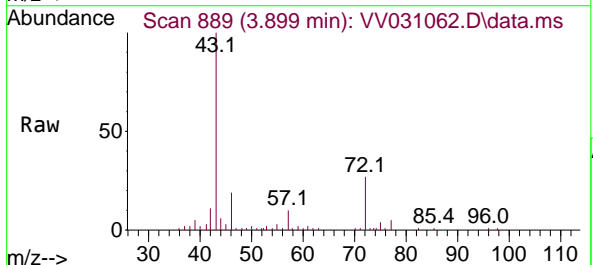
Ion	Ratio	Lower	Upper
63	100		
65	31.7	21.8	40.6
83	15.5	10.2	19.0

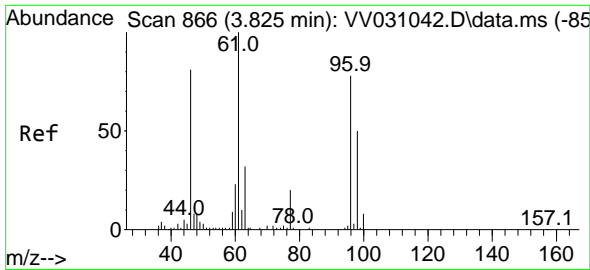


#21  
 2-Butanone  
 Concen: 45.115 ug/L  
 RT: 3.899 min Scan# 889  
 Delta R.T. -0.010 min  
 Lab File: VV031062.D  
 Acq: 16 May 2023 18:53

Tgt Ion: 43 Resp: 84861

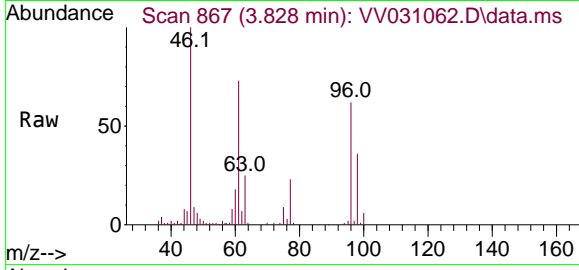
Ion	Ratio	Lower	Upper
43	100		
72	25.7	9.6	28.6



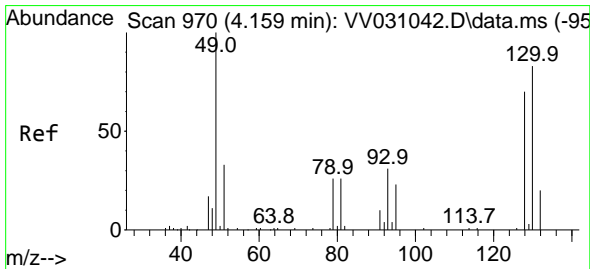
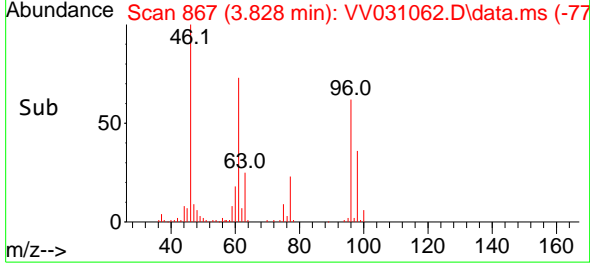
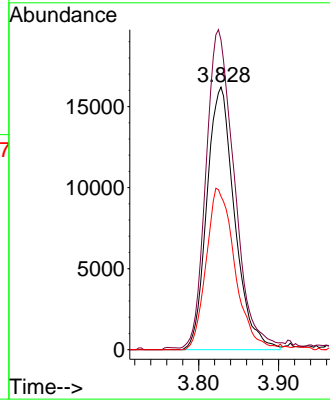


#22  
 cis-1,2-Dichloroethene  
 Concen: 4.404 ug/L  
 RT: 3.828 min Scan# 866  
 Delta R.T. 0.003 min  
 Lab File: VV031062.D  
 Acq: 16 May 2023 18:53

Instrument : MSVOA\_V  
 ClientSampleId : VSTD005352

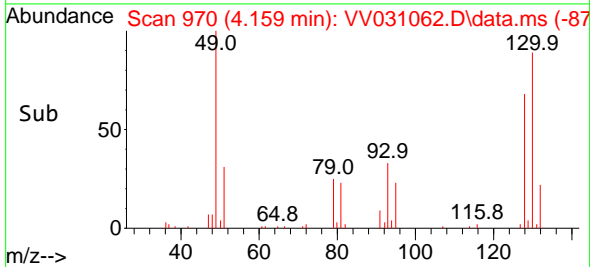
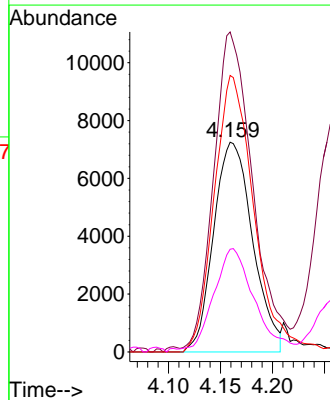
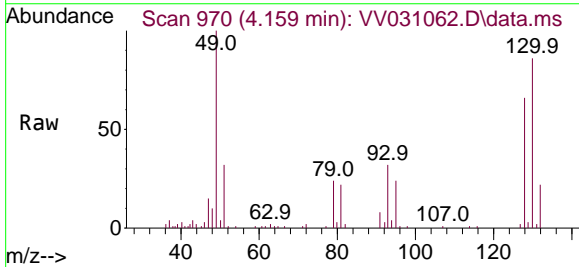


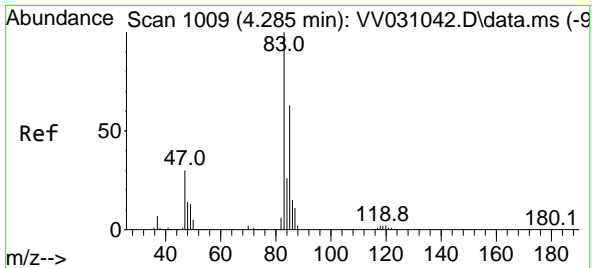
Tgt Ion: 96 Resp: 39146  
 Ion Ratio Lower Upper  
 96 100  
 61 117.9 86.0 159.6  
 98 58.4 43.2 80.2



#23  
 Bromochloromethane  
 Concen: 4.525 ug/L  
 RT: 4.159 min Scan# 970  
 Delta R.T. -0.000 min  
 Lab File: VV031062.D  
 Acq: 16 May 2023 18:53

Tgt Ion:128 Resp: 18937  
 Ion Ratio Lower Upper  
 128 100  
 49 152.6 104.7 194.5  
 130 131.8 93.4 173.4  
 51 49.0 42.0 63.0

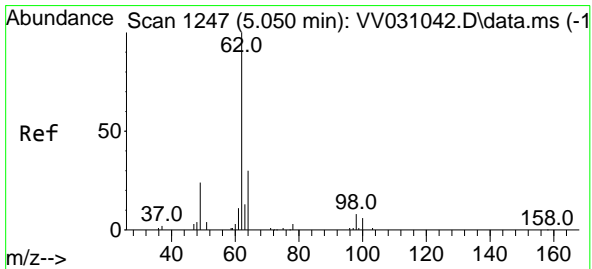
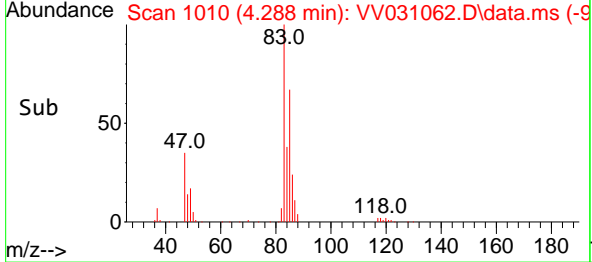
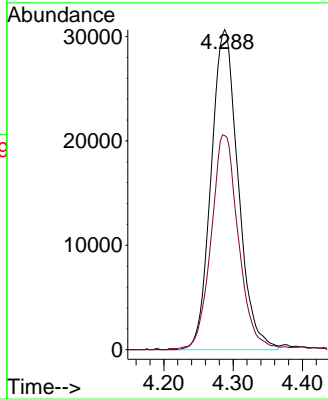
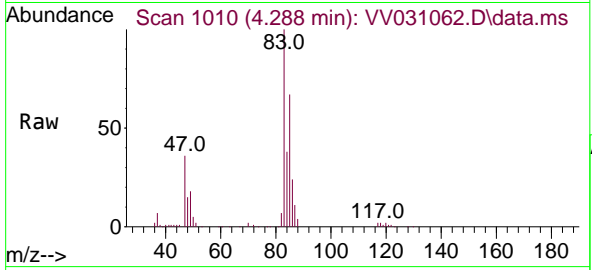




#25  
 Chloroform  
 Concen: 4.762 ug/L  
 RT: 4.288 min Scan# 10  
 Delta R.T. 0.003 min  
 Lab File: VV031062.D  
 Acq: 16 May 2023 18:53

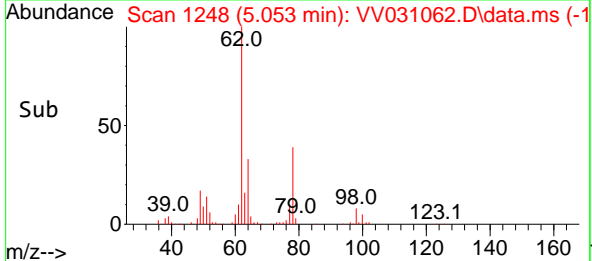
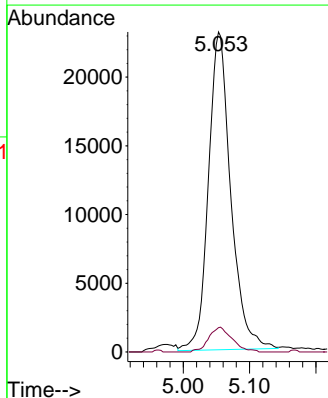
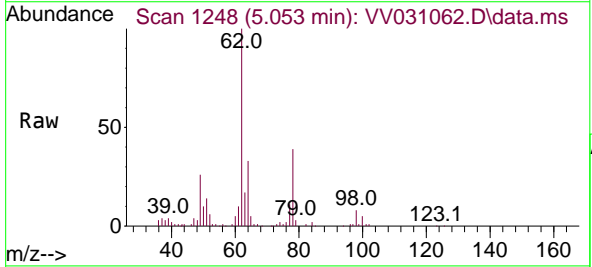
Instrument : MSVOA\_V  
 ClientSampleId : VSTD005352

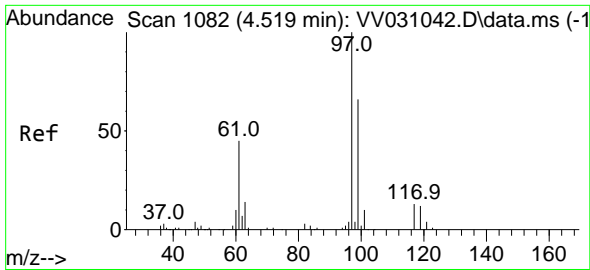
Tgt Ion: 83 Resp: 83107  
 Ion Ratio Lower Upper  
 83 100  
 85 66.9 46.4 86.2



#27  
 1,2-Dichloroethane  
 Concen: 4.938 ug/L  
 RT: 5.053 min Scan# 1248  
 Delta R.T. 0.003 min  
 Lab File: VV031062.D  
 Acq: 16 May 2023 18:53

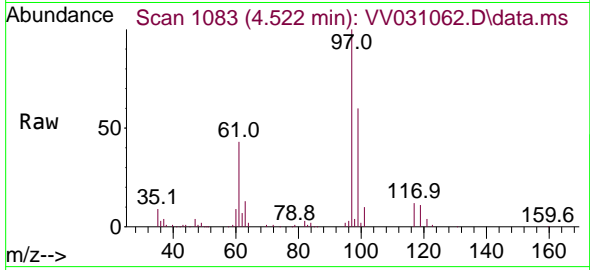
Tgt Ion: 62 Resp: 54086  
 Ion Ratio Lower Upper  
 62 100  
 98 7.6 6.0 9.0



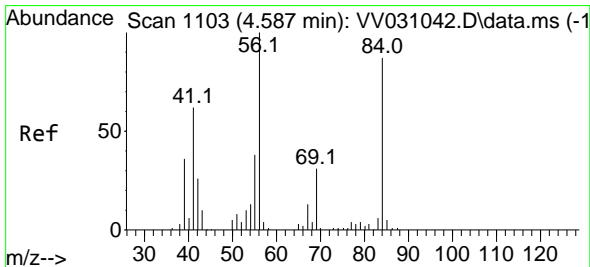
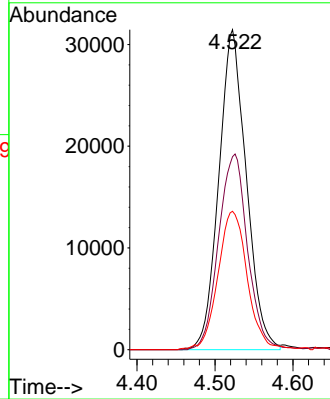
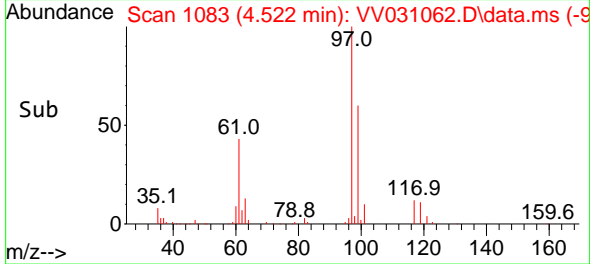


#29  
 1,1,1-Trichloroethane  
 Concen: 4.643 ug/L  
 RT: 4.522 min Scan# 1083  
 Delta R.T. 0.003 min  
 Lab File: VV031062.D  
 Acq: 16 May 2023 18:53

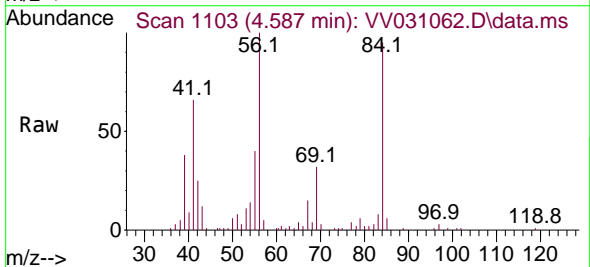
Instrument : MSVOA\_V  
 ClientSampleId : VSTD005352



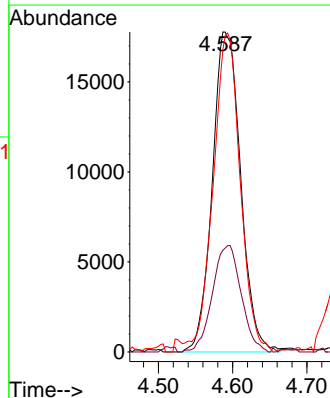
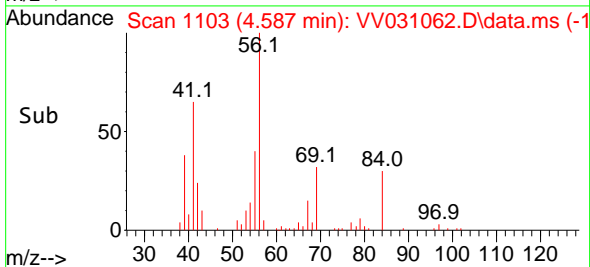
Tgt Ion: 97 Resp: 77027  
 Ion Ratio Lower Upper  
 97 100  
 99 64.8 51.4 77.2  
 61 46.4 37.4 56.0

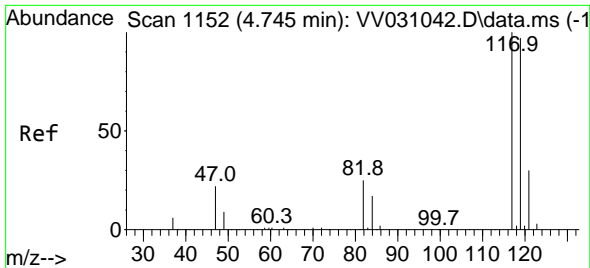


#30  
 Cyclohexane  
 Concen: 3.762 ug/L  
 RT: 4.587 min Scan# 1103  
 Delta R.T. -0.000 min  
 Lab File: VV031062.D  
 Acq: 16 May 2023 18:53



Tgt Ion: 56 Resp: 47139  
 Ion Ratio Lower Upper  
 56 100  
 69 33.7 25.0 37.6  
 84 95.0 74.2 111.2

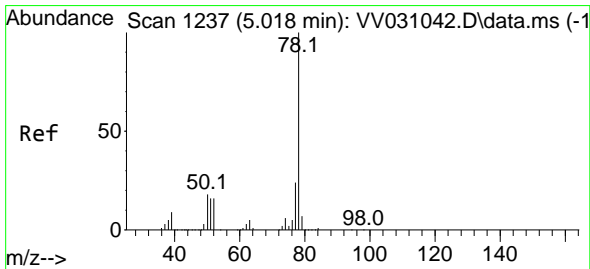
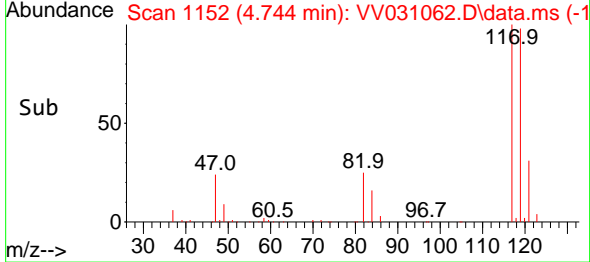
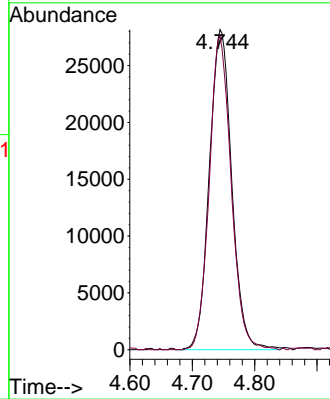
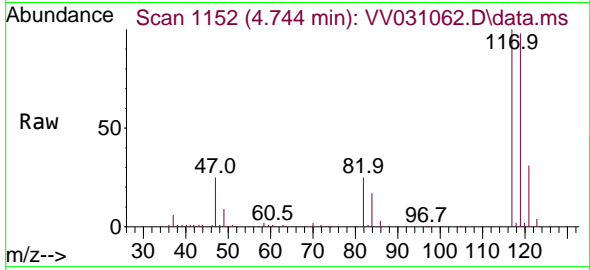




#31  
 Carbon tetrachloride  
 Concen: 4.718 ug/L  
 RT: 4.744 min Scan# 1152  
 Delta R.T. -0.000 min  
 Lab File: VV031062.D  
 Acq: 16 May 2023 18:53

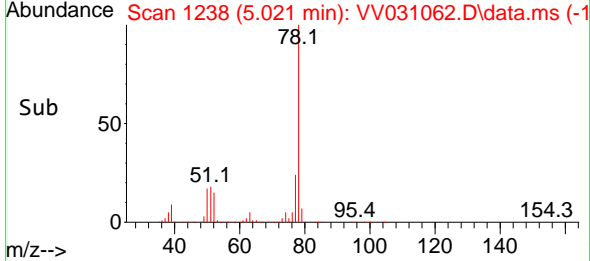
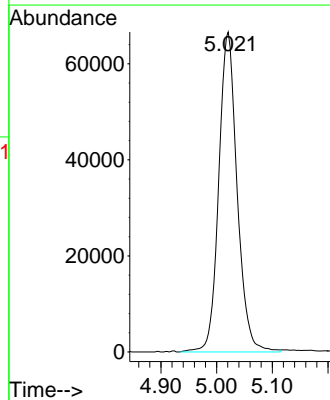
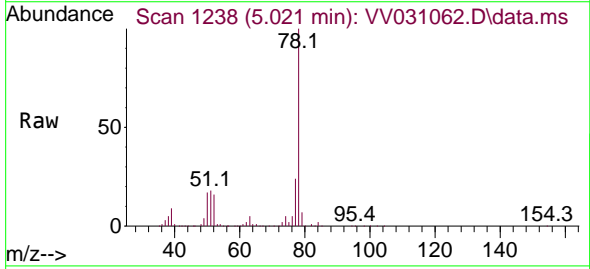
Instrument : MSVOA\_V  
 ClientSampleId : VSTD005352

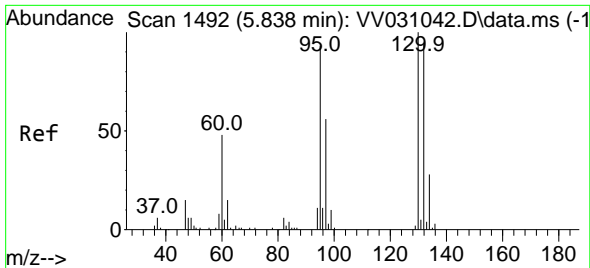
Tgt Ion:117 Resp: 70300  
 Ion Ratio Lower Upper  
 117 100  
 119 95.4 78.4 117.6



#33  
 Benzene  
 Concen: 4.606 ug/L  
 RT: 5.021 min Scan# 1238  
 Delta R.T. 0.003 min  
 Lab File: VV031062.D  
 Acq: 16 May 2023 18:53

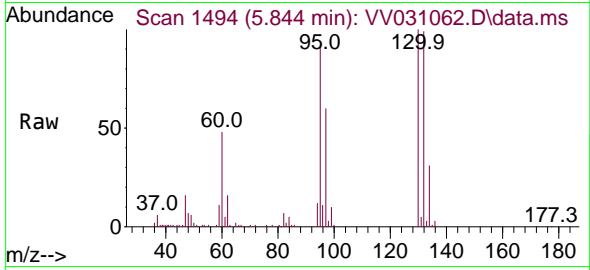
Tgt Ion: 78 Resp: 152966





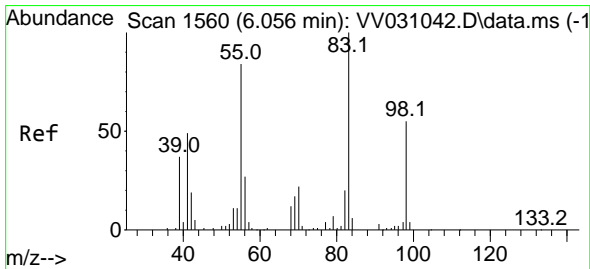
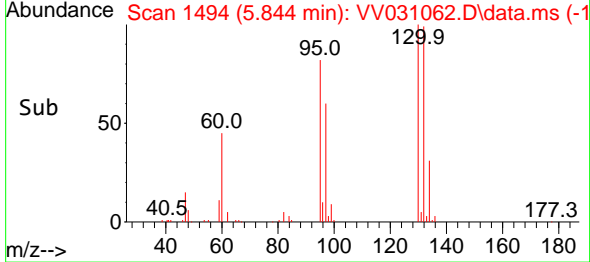
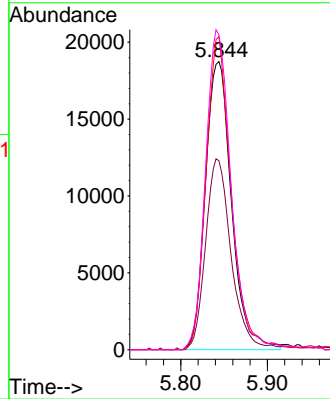
#34  
 Trichloroethene  
 Concen: 4.446 ug/L  
 RT: 5.844 min Scan# 1492  
 Delta R.T. 0.006 min  
 Lab File: VV031062.D  
 Acq: 16 May 2023 18:53

Instrument : MSVOA\_V  
 ClientSampleId : VSTD005352



Tgt Ion: 95 Resp: 39356

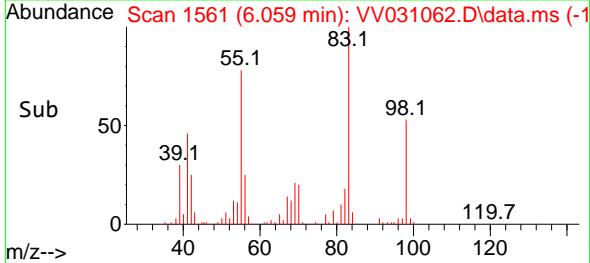
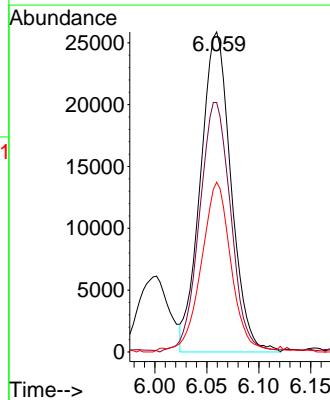
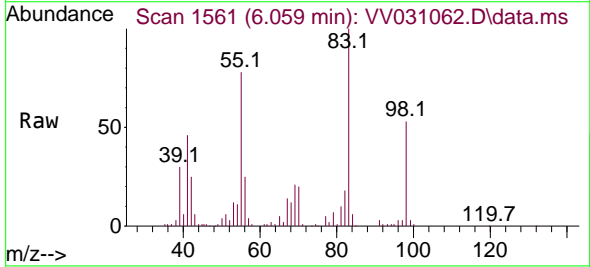
Ion	Ratio	Lower	Upper
95	100		
97	65.6	46.2	85.8
132	108.6	72.7	135.1
130	109.3	75.7	140.5



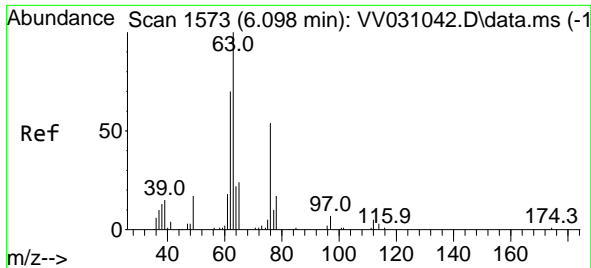
#35  
 Methylcyclohexane  
 Concen: 3.857 ug/L  
 RT: 6.059 min Scan# 1561  
 Delta R.T. 0.003 min  
 Lab File: VV031062.D  
 Acq: 16 May 2023 18:53

Tgt Ion: 83 Resp: 52907

Ion	Ratio	Lower	Upper
83	100		
55	80.0	62.9	94.3
98	51.9	40.5	60.7



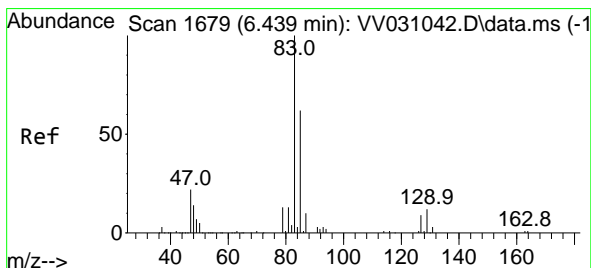
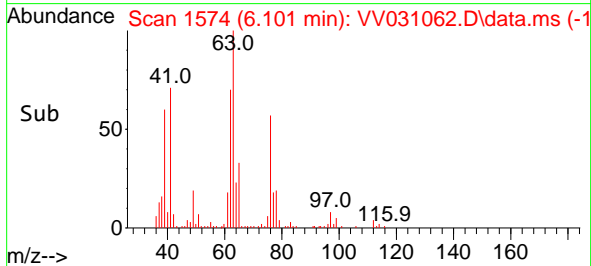
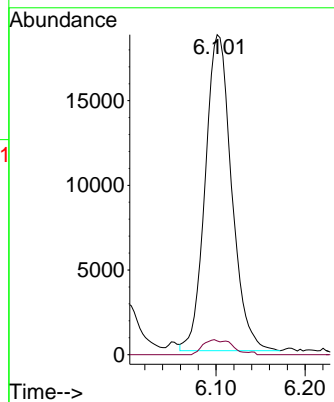
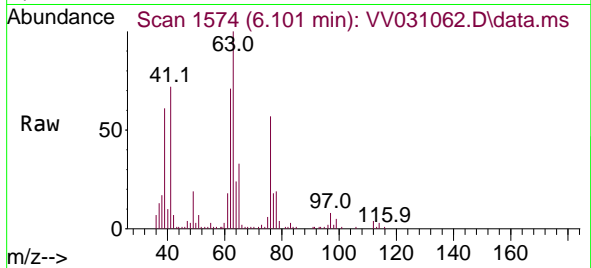




#37  
 1,2-Dichloropropane  
 Concen: 4.878 ug/L  
 RT: 6.101 min Scan# 1680  
 Delta R.T. 0.003 min  
 Lab File: VV031062.D  
 Acq: 16 May 2023 18:53

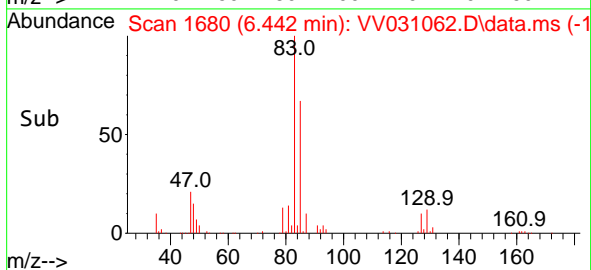
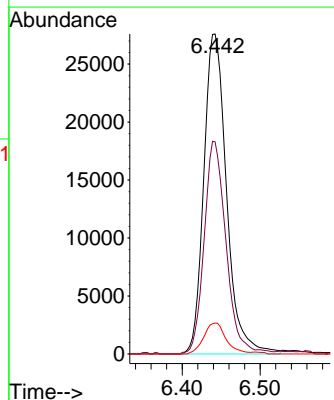
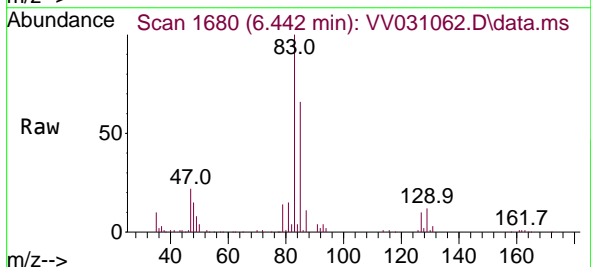
Instrument : MSVOA\_V  
 ClientSampleId : VSTD005352

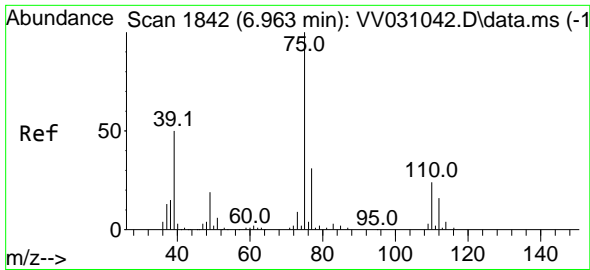
Tgt Ion: 63 Resp: 38423  
 Ion Ratio Lower Upper  
 63 100  
 112 3.0 3.8 5.8#



#38  
 Bromodichloromethane  
 Concen: 4.870 ug/L  
 RT: 6.442 min Scan# 1680  
 Delta R.T. 0.003 min  
 Lab File: VV031062.D  
 Acq: 16 May 2023 18:53

Tgt Ion: 83 Resp: 56142  
 Ion Ratio Lower Upper  
 83 100  
 85 66.3 44.4 82.4  
 127 9.7 6.6 9.8

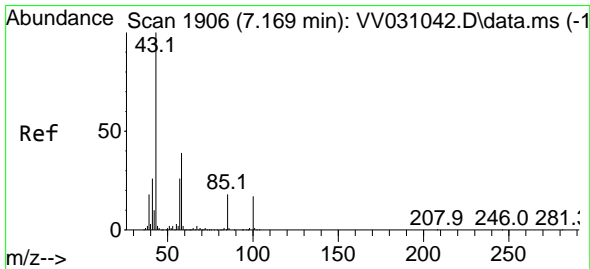
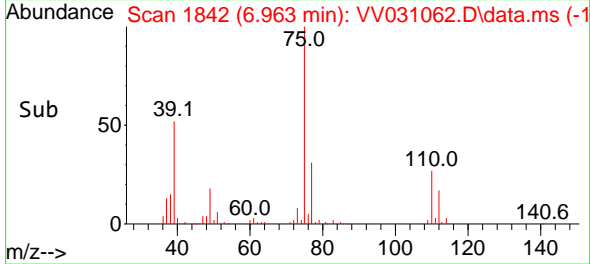
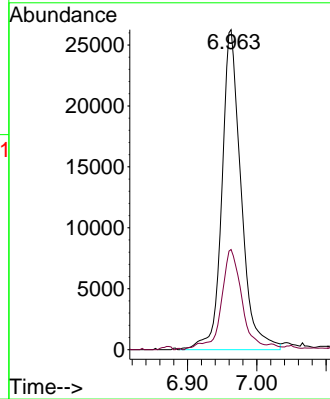
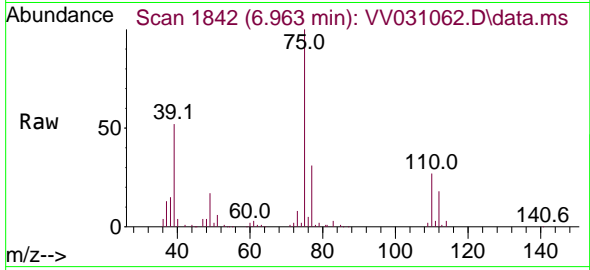




#39  
 cis-1,3-Dichloropropene  
 Concen: 4.298 ug/L  
 RT: 6.963 min Scan# 1842  
 Delta R.T. -0.000 min  
 Lab File: VV031062.D  
 Acq: 16 May 2023 18:53

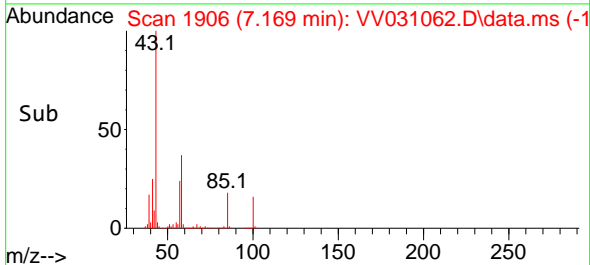
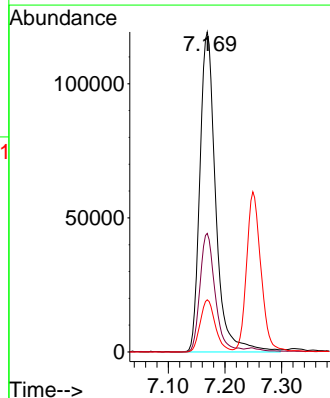
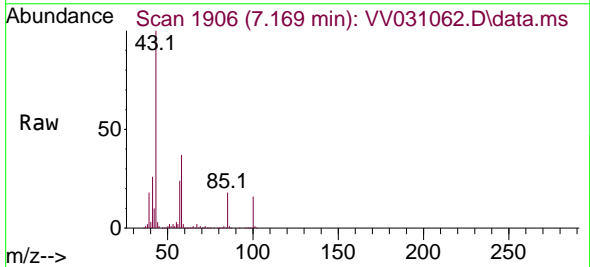
Instrument : MSVOA\_V  
 ClientSampleId : VSTD005352

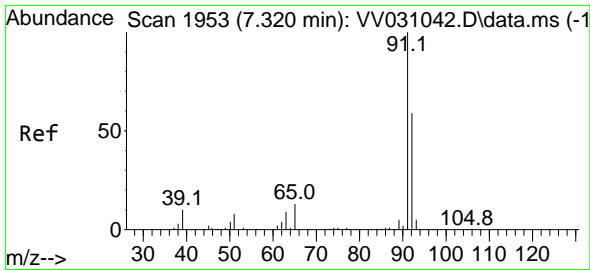
Tgt Ion: 75 Resp: 50704  
 Ion Ratio Lower Upper  
 75 100  
 77 31.3 22.6 42.0



#40  
 4-Methyl-2-pentanone  
 Concen: 56.855 ug/L  
 RT: 7.169 min Scan# 1906  
 Delta R.T. -0.000 min  
 Lab File: VV031062.D  
 Acq: 16 May 2023 18:53

Tgt Ion: 43 Resp: 232030  
 Ion Ratio Lower Upper  
 43 100  
 58 35.6 28.3 42.5  
 100 15.6 11.8 17.8

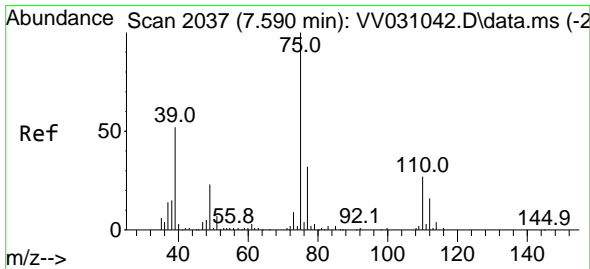
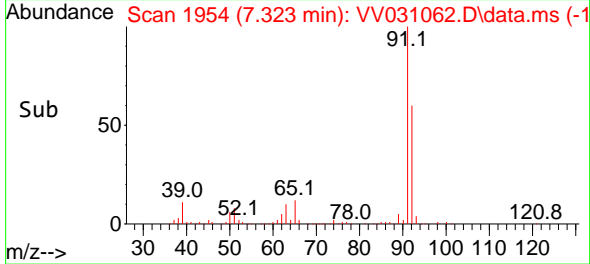
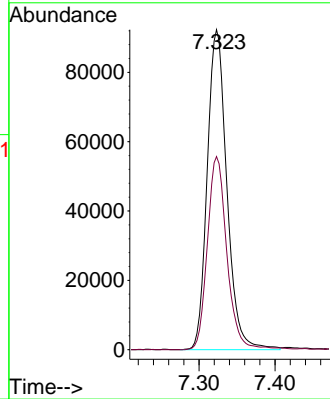
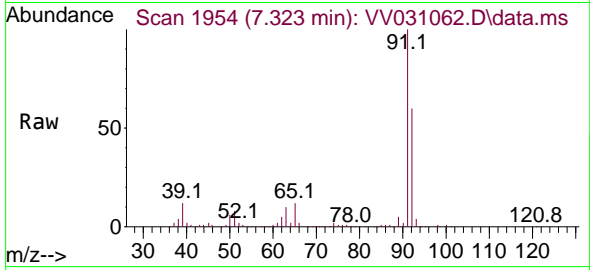




#42  
 Toluene  
 Concen: 4.632 ug/L  
 RT: 7.323 min Scan# 1954  
 Delta R.T. 0.003 min  
 Lab File: VV031062.D  
 Acq: 16 May 2023 18:53

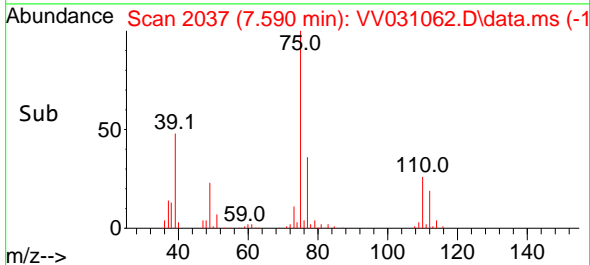
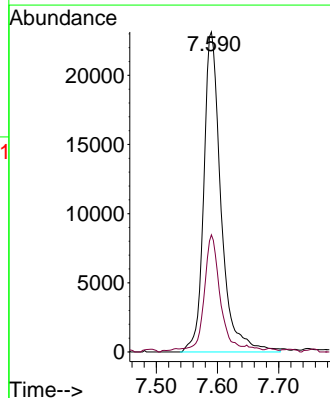
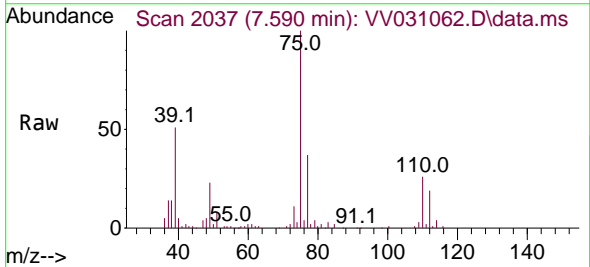
Instrument : MSVOA\_V  
 ClientSampleId : VSTD005352

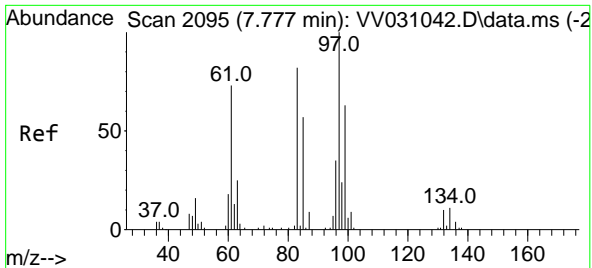
Tgt Ion: 91 Resp: 165613  
 Ion Ratio Lower Upper  
 91 100  
 92 60.3 40.5 75.1



#44  
 trans-1,3-Dichloropropene  
 Concen: 4.524 ug/L  
 RT: 7.590 min Scan# 2037  
 Delta R.T. -0.000 min  
 Lab File: VV031062.D  
 Acq: 16 May 2023 18:53

Tgt Ion: 75 Resp: 45477  
 Ion Ratio Lower Upper  
 75 100  
 77 36.6 21.6 40.0





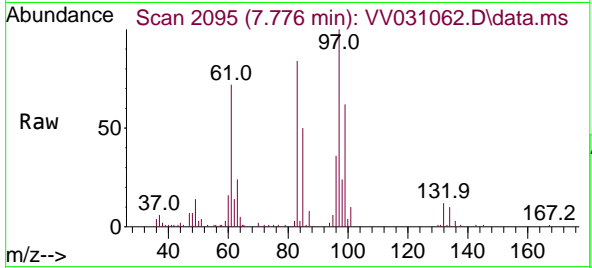
#45  
 1,1,2-Trichloroethane  
 Concen: 5.081 ug/L  
 RT: 7.776 min Scan# 2095  
 Delta R.T. -0.000 min  
 Lab File: VV031062.D  
 Acq: 16 May 2023 18:53

Instrument :

MSVOA\_V

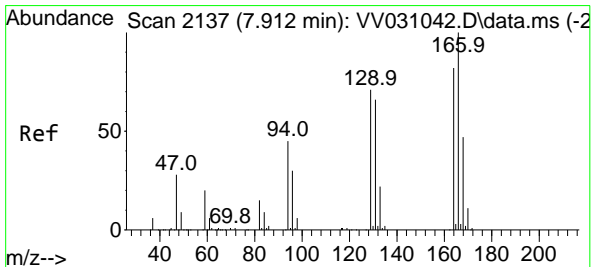
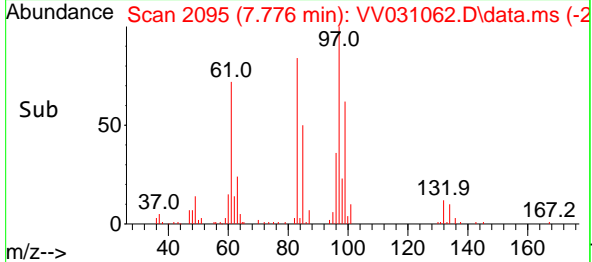
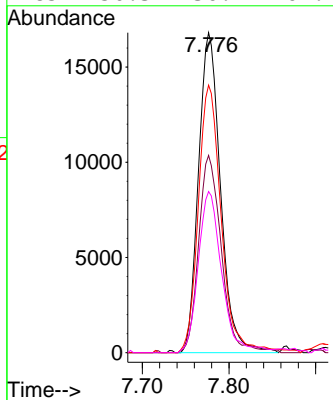
ClientSampleId :

VSTD005352

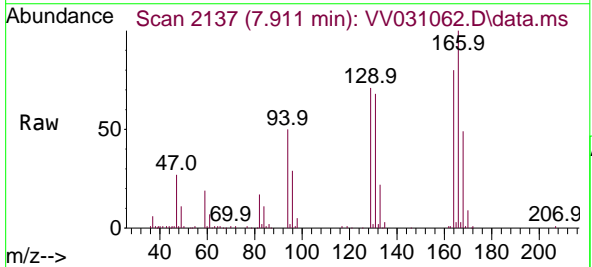


Tgt Ion: 97 Resp: 29697

Ion	Ratio	Lower	Upper
97	100		
99	61.7	42.8	79.6
83	83.6	57.5	106.7
85	50.3	36.1	67.1

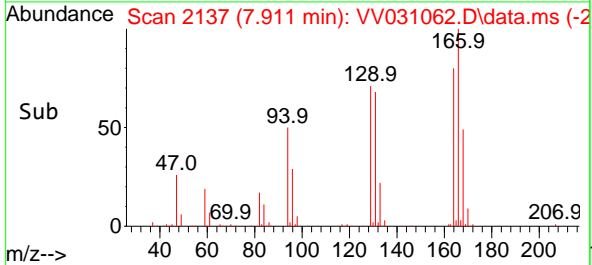
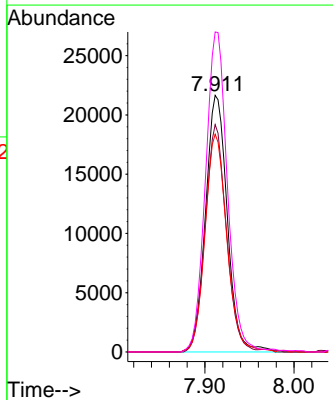


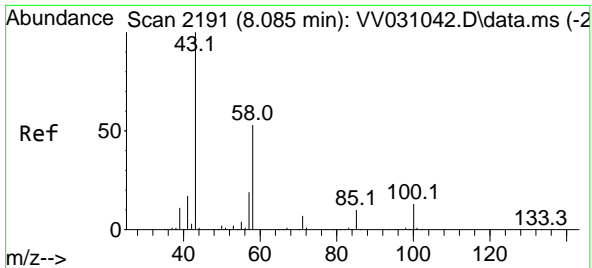
#47  
 Tetrachloroethene  
 Concen: 4.349 ug/L  
 RT: 7.911 min Scan# 2137  
 Delta R.T. -0.000 min  
 Lab File: VV031062.D  
 Acq: 16 May 2023 18:53



Tgt Ion: 164 Resp: 36726

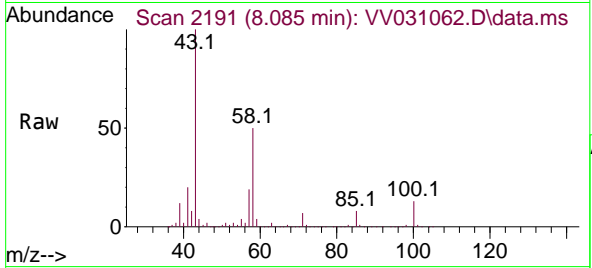
Ion	Ratio	Lower	Upper
164	100		
129	88.6	60.5	112.3
131	84.9	60.8	112.8
166	124.7	85.9	159.5





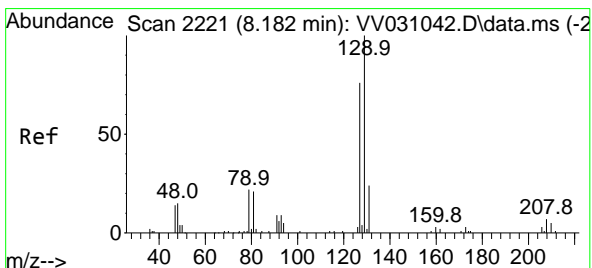
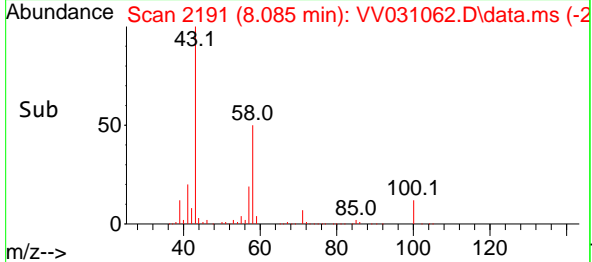
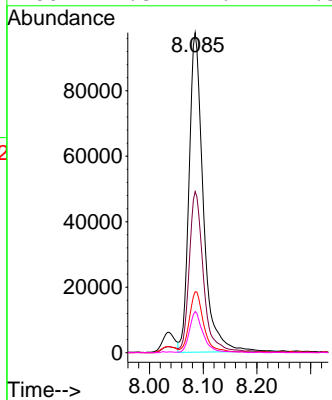
#48  
 2-Hexanone  
 Concen: 57.214 ug/L  
 RT: 8.085 min Scan# 2191  
 Delta R.T. -0.000 min  
 Lab File: VV031062.D  
 Acq: 16 May 2023 18:53

Instrument : MSVOA\_V  
 ClientSampleId : VSTD005352

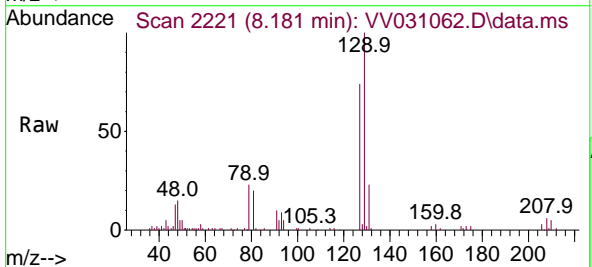


Tgt Ion: 43 Resp: 179087

Ion	Ratio	Lower	Upper
43	100		
58	49.1	39.9	59.9
57	18.8	14.1	21.1
100	11.8	9.7	14.5

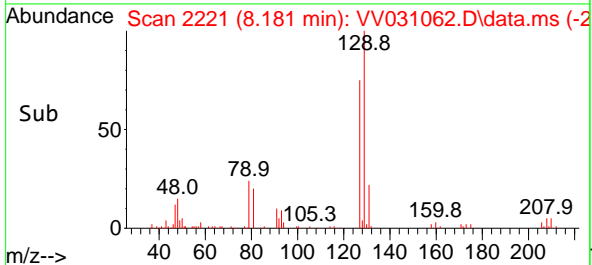
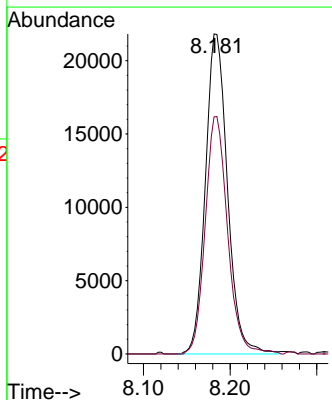


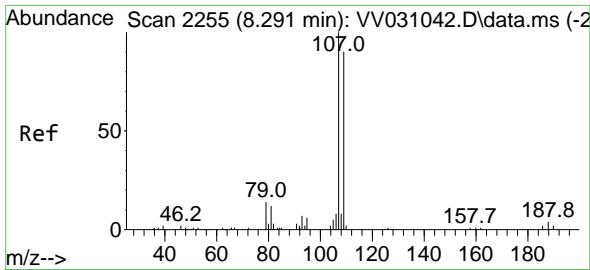
#49  
 Dibromochloromethane  
 Concen: 5.265 ug/L  
 RT: 8.181 min Scan# 2221  
 Delta R.T. -0.000 min  
 Lab File: VV031062.D  
 Acq: 16 May 2023 18:53



Tgt Ion: 129 Resp: 38709

Ion	Ratio	Lower	Upper
129	100		
127	74.1	55.3	102.7



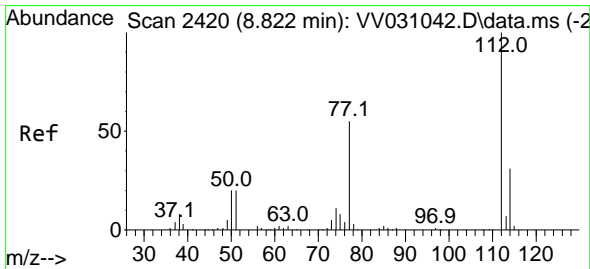
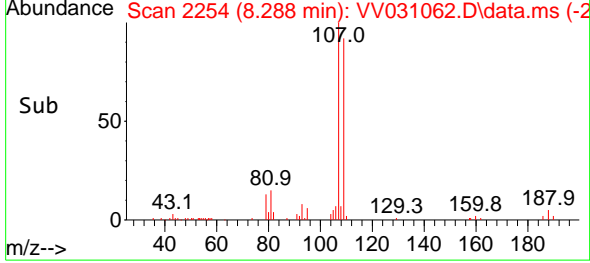
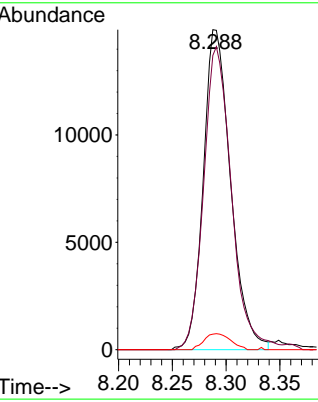
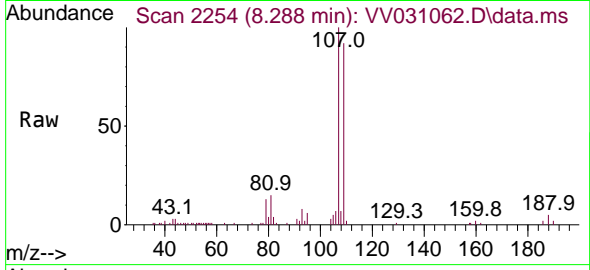


#50  
 1,2-Dibromoethane  
 Concen: 5.067 ug/L  
 RT: 8.288 min Scan# 21  
 Delta R.T. -0.003 min  
 Lab File: VV031062.D  
 Acq: 16 May 2023 18:53

Instrument :  
 MSVOA\_V  
 ClientSampleId :  
 VSTD005352

Tgt Ion:107 Resp: 26412

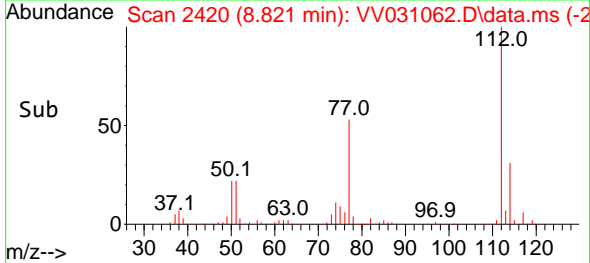
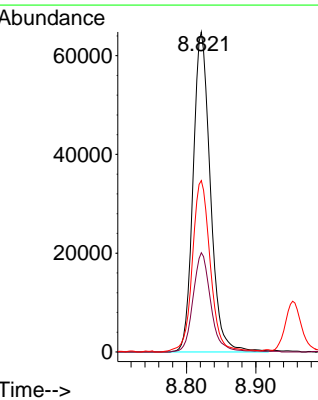
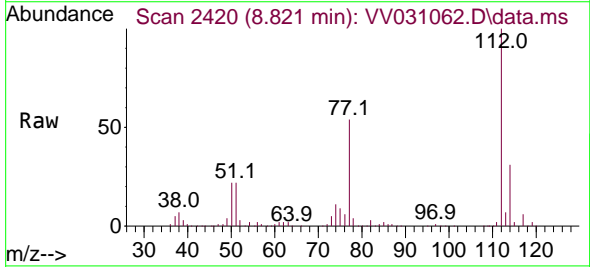
Ion	Ratio	Lower	Upper
107	100		
109	92.0	64.9	120.5
188	4.9	3.2	4.8#

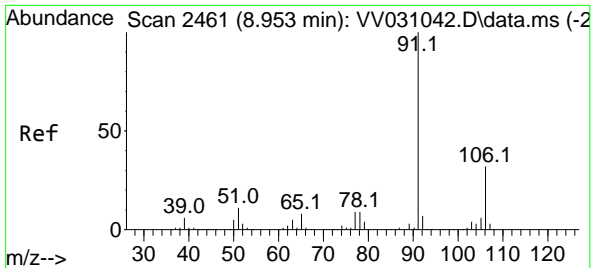


#51  
 Chlorobenzene  
 Concen: 4.615 ug/L  
 RT: 8.821 min Scan# 2420  
 Delta R.T. -0.000 min  
 Lab File: VV031062.D  
 Acq: 16 May 2023 18:53

Tgt Ion:112 Resp: 111864

Ion	Ratio	Lower	Upper
112	100		
114	31.0	22.5	41.9
77	53.5	45.3	67.9

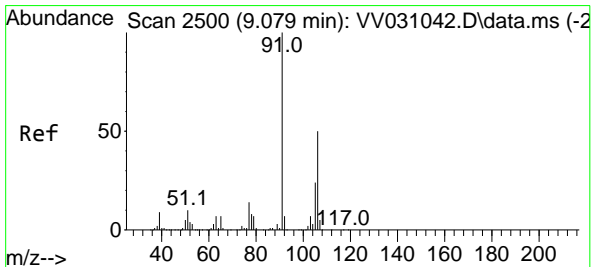
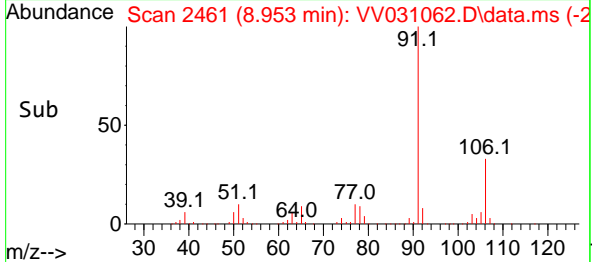
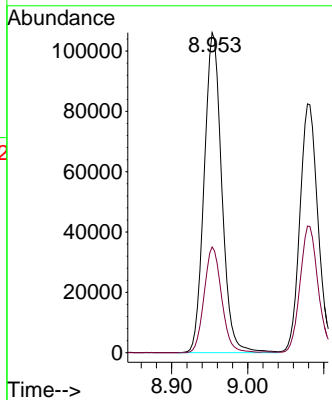
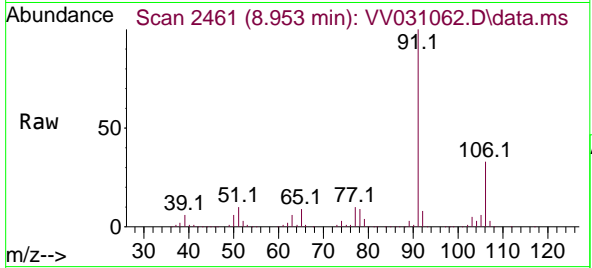




#52  
 Ethylbenzene  
 Concen: 4.379 ug/L  
 RT: 8.953 min Scan# 2461  
 Delta R.T. -0.000 min  
 Lab File: VV031062.D  
 Acq: 16 May 2023 18:53

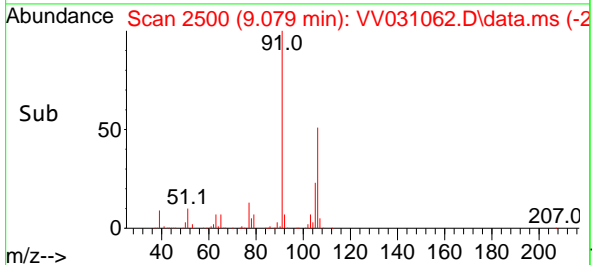
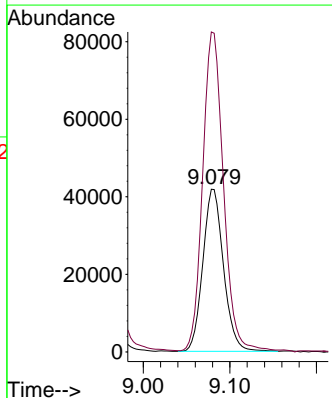
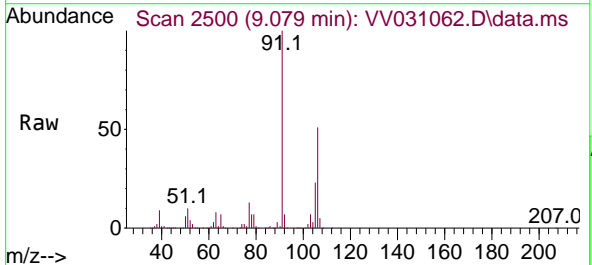
Instrument : MSVOA\_V  
 ClientSampleId : VSTD005352

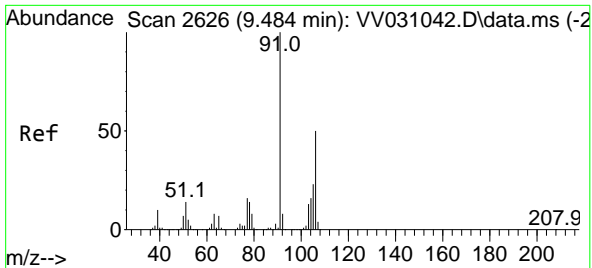
Tgt Ion: 91 Resp: 170702  
 Ion Ratio Lower Upper  
 91 100  
 106 33.0 21.4 39.8



#53  
 m,p-Xylene  
 Concen: 4.457 ug/L  
 RT: 9.079 min Scan# 2500  
 Delta R.T. -0.000 min  
 Lab File: VV031062.D  
 Acq: 16 May 2023 18:53

Tgt Ion: 106 Resp: 69334  
 Ion Ratio Lower Upper  
 106 100  
 91 196.6 138.7 257.5

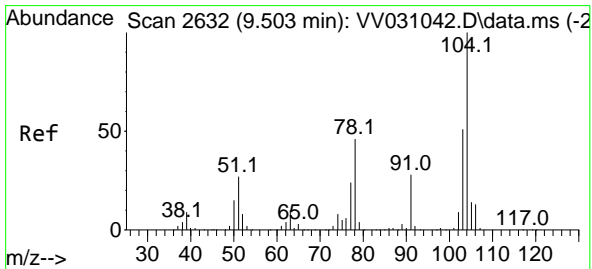
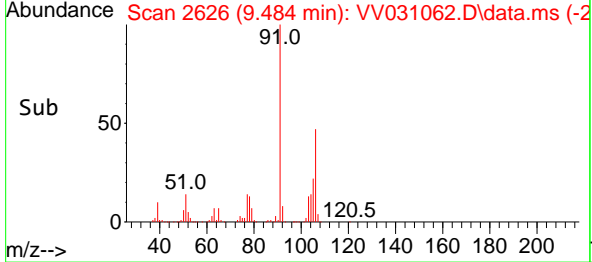
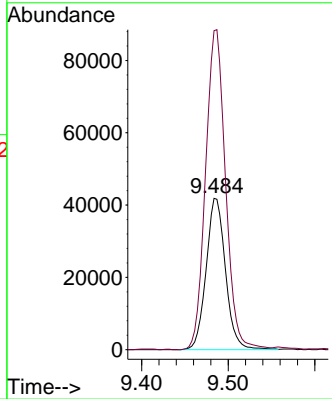
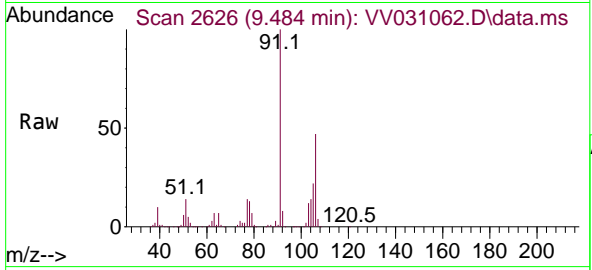




#54  
 o-Xylene  
 Concen: 4.397 ug/L  
 RT: 9.484 min Scan# 2626  
 Delta R.T. -0.000 min  
 Lab File: VV031062.D  
 Acq: 16 May 2023 18:53

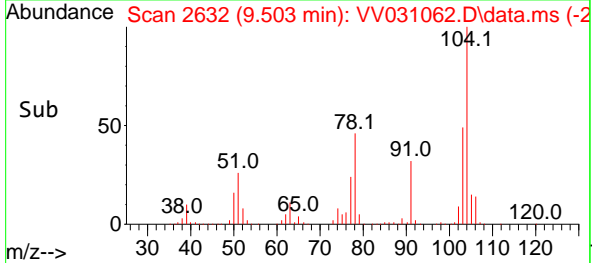
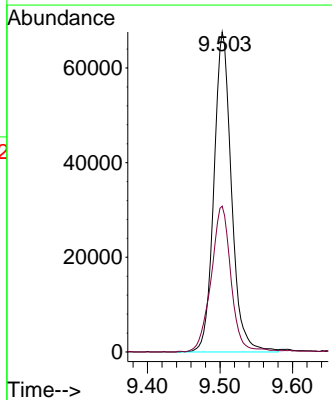
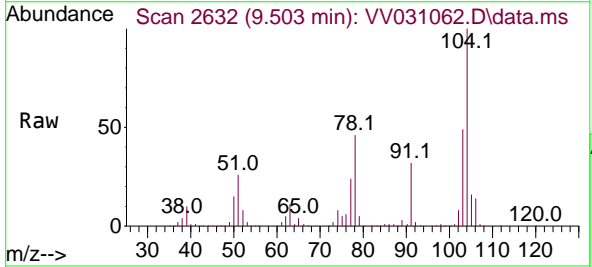
Instrument : MSVOA\_V  
 ClientSampleId : VSTD005352

Tgt Ion:106 Resp: 65094  
 Ion Ratio Lower Upper  
 106 100  
 91 210.8 145.1 269.5

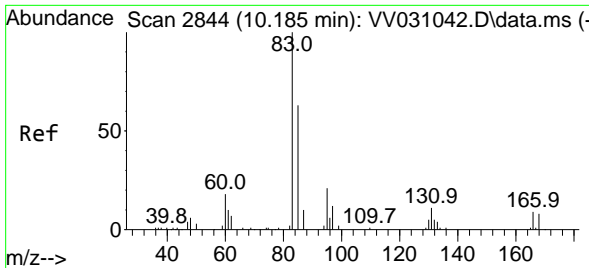


#55  
 Styrene  
 Concen: 4.560 ug/L  
 RT: 9.503 min Scan# 2632  
 Delta R.T. -0.000 min  
 Lab File: VV031062.D  
 Acq: 16 May 2023 18:53

Tgt Ion:104 Resp: 113903  
 Ion Ratio Lower Upper  
 104 100  
 78 45.6 31.4 58.2

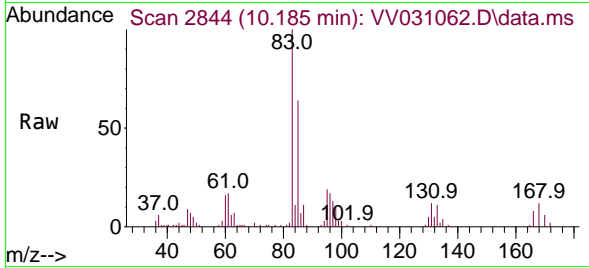




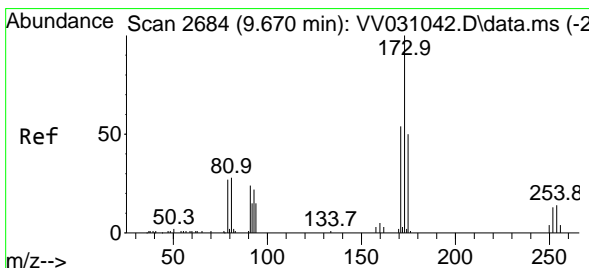
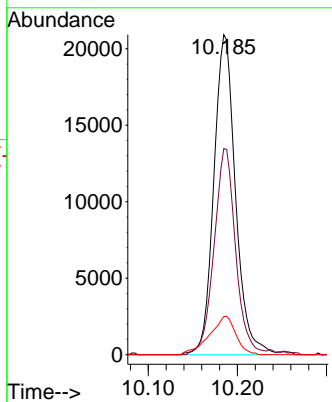
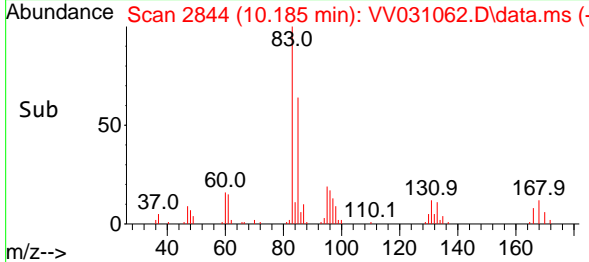


#57  
 1,1,2-Tetrachloroethane  
 Concen: 5.426 ug/L  
 RT: 10.185 min Scan# 2844  
 Delta R.T. -0.000 min  
 Lab File: VV031062.D  
 Acq: 16 May 2023 18:53

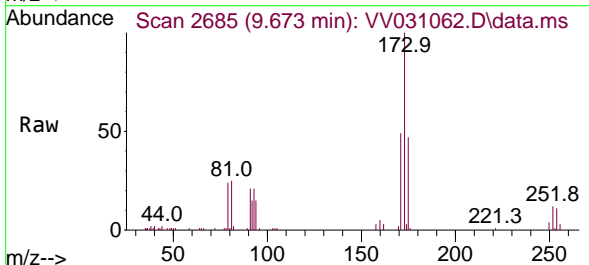
Instrument : MSVOA\_V  
 ClientSampleId : VSTD005352



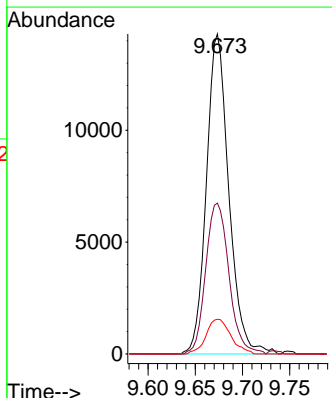
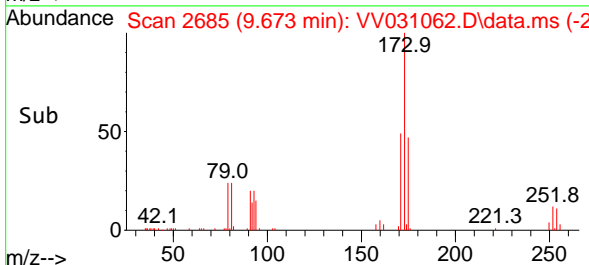
Tgt Ion: 83 Resp: 35448  
 Ion Ratio Lower Upper  
 83 100  
 85 64.4 45.2 84.0  
 131 11.9 8.3 12.5

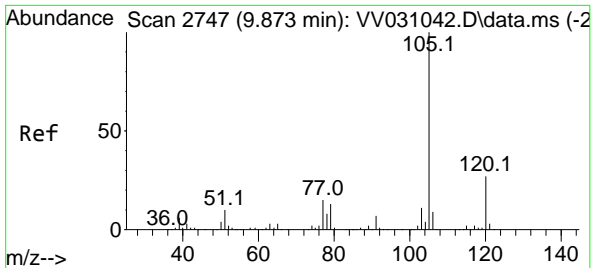


#59  
 Bromoform  
 Concen: 5.060 ug/L  
 RT: 9.673 min Scan# 2685  
 Delta R.T. 0.003 min  
 Lab File: VV031062.D  
 Acq: 16 May 2023 18:53



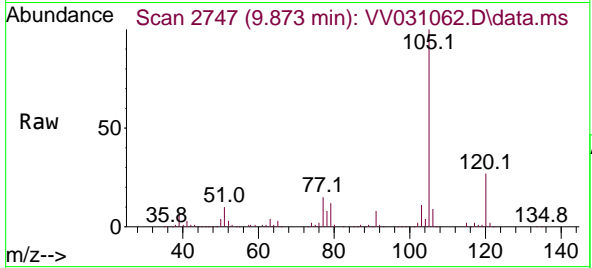
Tgt Ion: 173 Resp: 23567  
 Ion Ratio Lower Upper  
 173 100  
 175 49.0 39.9 59.9  
 254 12.0 9.7 14.5





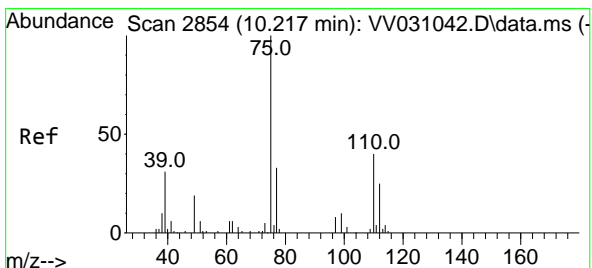
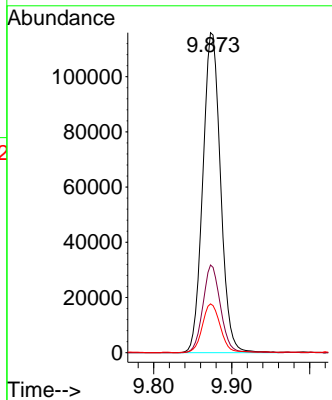
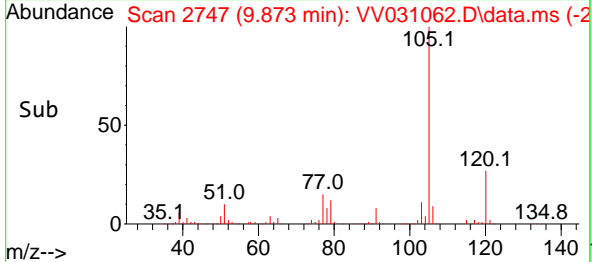
#60  
 Isopropylbenzene  
 Concen: 4.295 ug/L  
 RT: 9.873 min Scan# 21  
 Delta R.T. -0.000 min  
 Lab File: VV031062.D  
 Acq: 16 May 2023 18:53

Instrument : MSVOA\_V  
 ClientSampleId : VSTD005352

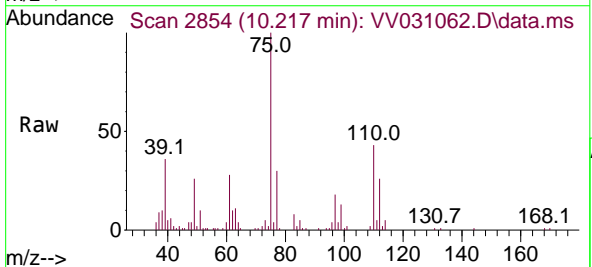


Tgt Ion: 105 Resp: 183237

Ion	Ratio	Lower	Upper
105	100		
120	27.1	22.2	33.4
77	15.6	13.0	19.6

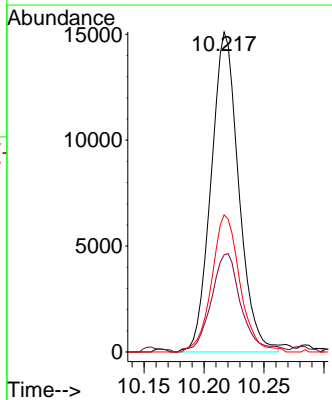
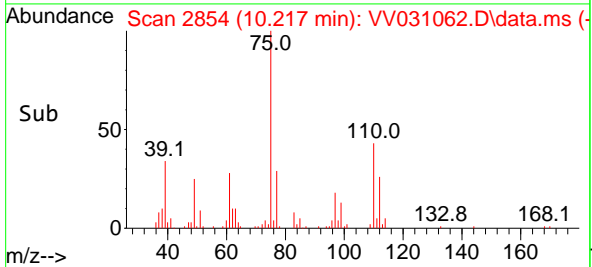


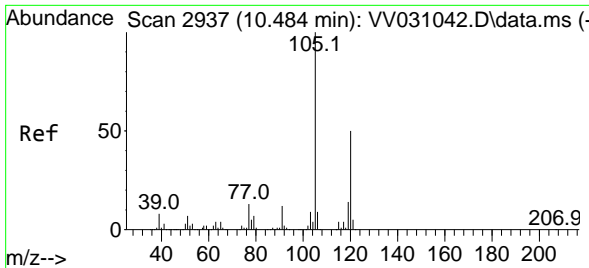
#61  
 1,2,3-Trichloropropane  
 Concen: 4.867 ug/L  
 RT: 10.217 min Scan# 2854  
 Delta R.T. -0.000 min  
 Lab File: VV031062.D  
 Acq: 16 May 2023 18:53



Tgt Ion: 75 Resp: 24191

Ion	Ratio	Lower	Upper
75	100		
77	33.5	25.3	37.9
110	43.7	34.0	51.0

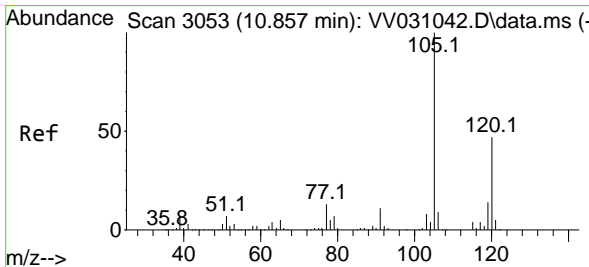
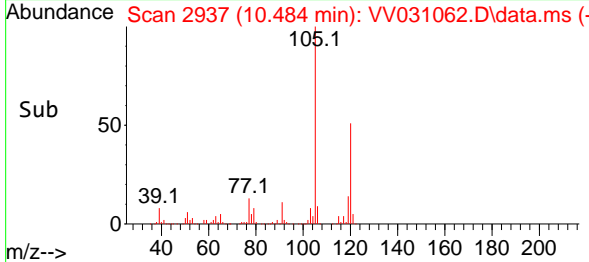
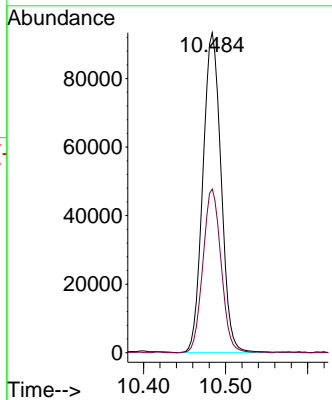
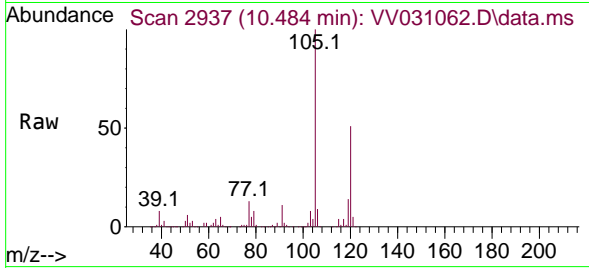




#62  
 1,3,5-Trimethylbenzene  
 Concen: 4.149 ug/L  
 RT: 10.484 min Scan# 2937  
 Delta R.T. -0.000 min  
 Lab File: VV031062.D  
 Acq: 16 May 2023 18:53

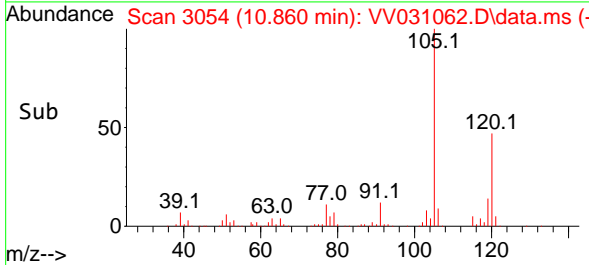
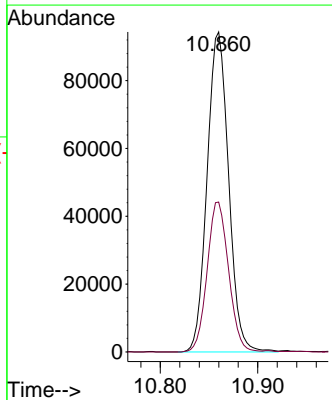
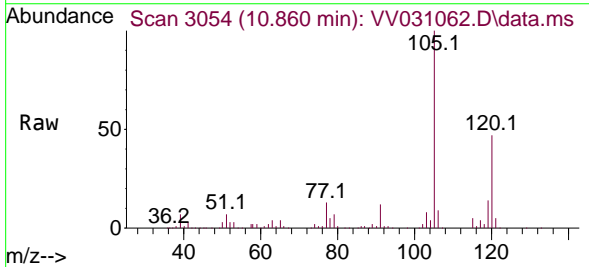
Instrument : MSVOA\_V  
 ClientSampleId : VSTD005352

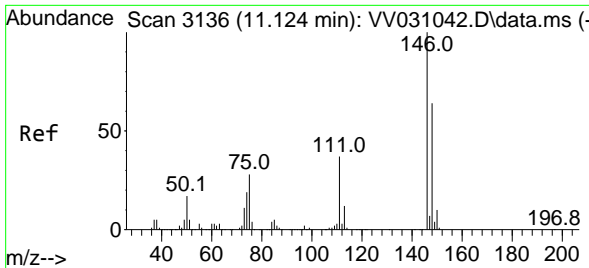
Tgt Ion:105 Resp: 144078  
 Ion Ratio Lower Upper  
 105 100  
 120 50.9 40.2 60.4



#63  
 1,2,4-Trimethylbenzene  
 Concen: 4.115 ug/L  
 RT: 10.860 min Scan# 3054  
 Delta R.T. 0.003 min  
 Lab File: VV031062.D  
 Acq: 16 May 2023 18:53

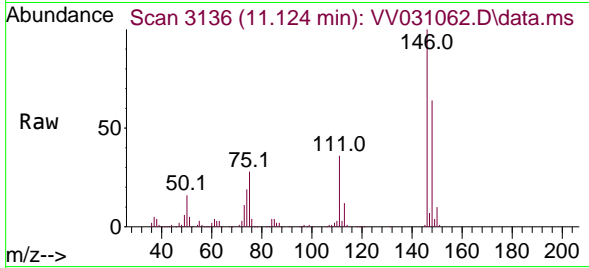
Tgt Ion:105 Resp: 144812  
 Ion Ratio Lower Upper  
 105 100  
 120 46.7 37.9 56.9



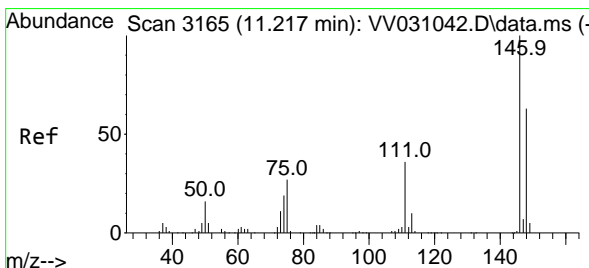
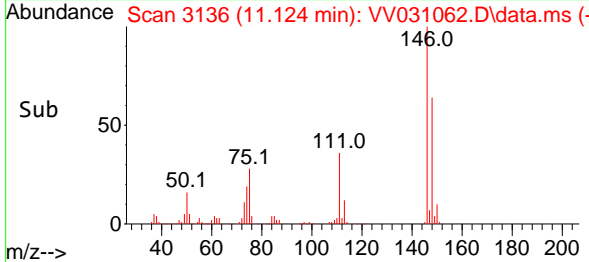
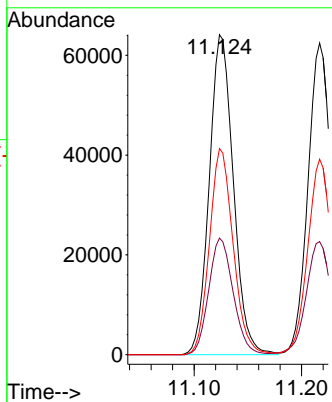


#64  
 1,3-Dichlorobenzene  
 Concen: 4.562 ug/L  
 RT: 11.124 min Scan# 3136  
 Delta R.T. -0.000 min  
 Lab File: VV031062.D  
 Acq: 16 May 2023 18:53

Instrument : MSVOA\_V  
 ClientSampleId : VSTD005352

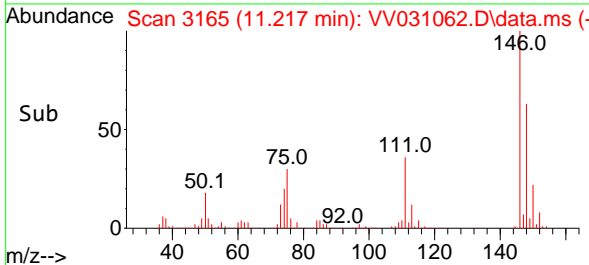
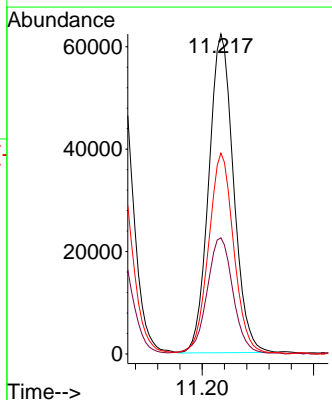
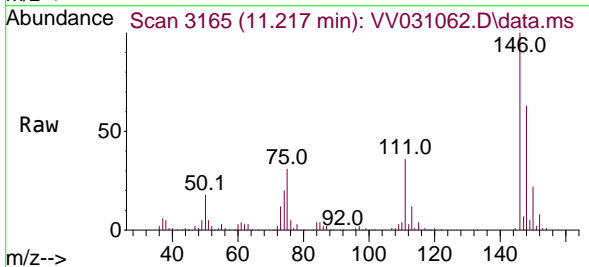


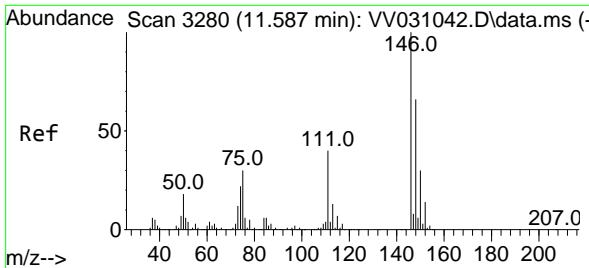
Tgt Ion:146 Resp: 99946  
 Ion Ratio Lower Upper  
 146 100  
 111 36.5 26.5 49.3  
 148 64.4 43.4 80.6



#65  
 1,4-Dichlorobenzene  
 Concen: 4.350 ug/L  
 RT: 11.217 min Scan# 3165  
 Delta R.T. -0.000 min  
 Lab File: VV031062.D  
 Acq: 16 May 2023 18:53

Tgt Ion:146 Resp: 96148  
 Ion Ratio Lower Upper  
 146 100  
 111 36.3 23.9 44.5  
 148 62.7 42.8 79.6

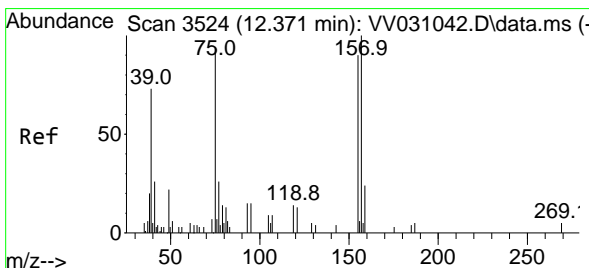
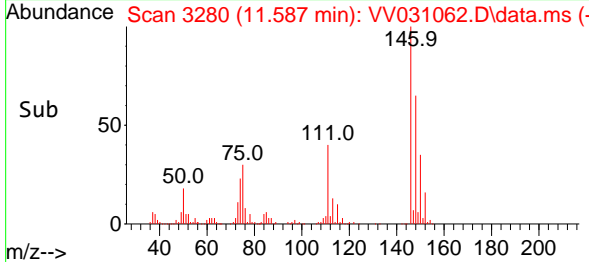
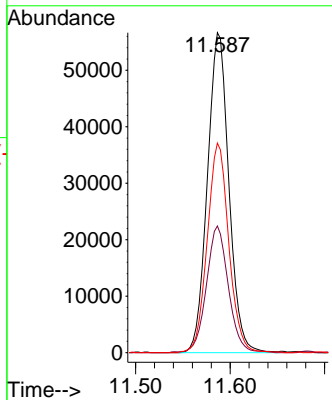
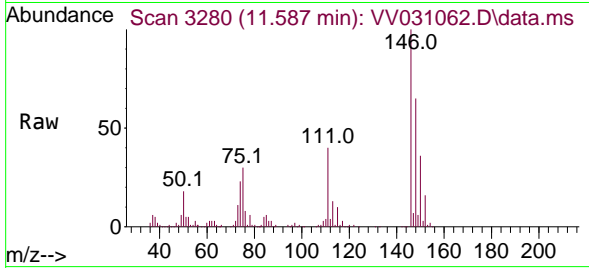




#67  
 1,2-Dichlorobenzene  
 Concen: 4.531 ug/L  
 RT: 11.587 min Scan# 3111  
 Delta R.T. -0.000 min  
 Lab File: VV031062.D  
 Acq: 16 May 2023 18:53

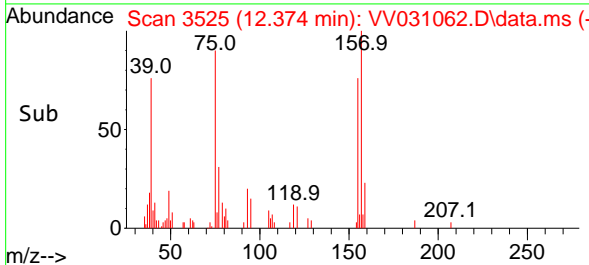
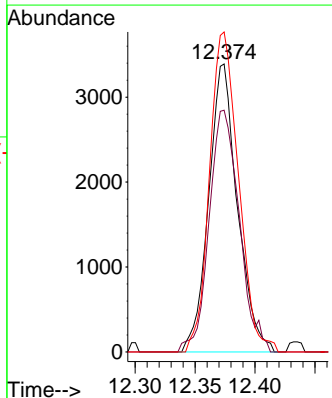
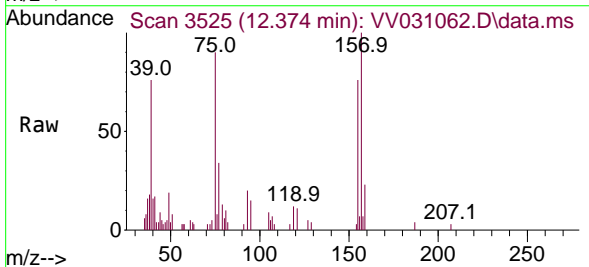
Instrument : MSVOA\_V  
 ClientSampleId : VSTD005352

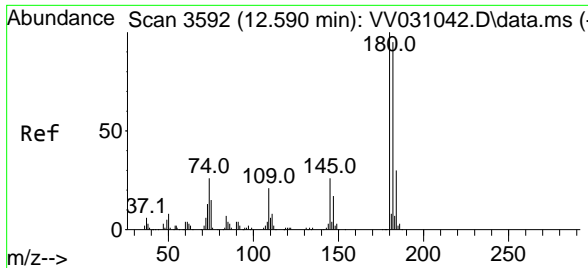
Tgt Ion	Resp	Lower	Upper
146	89270		
111	39.6	34.0	51.0
148	65.5	53.8	80.6



#68  
 1,2-Dibromo-3-chloropropane  
 Concen: 4.485 ug/L  
 RT: 12.374 min Scan# 3525  
 Delta R.T. 0.003 min  
 Lab File: VV031062.D  
 Acq: 16 May 2023 18:53

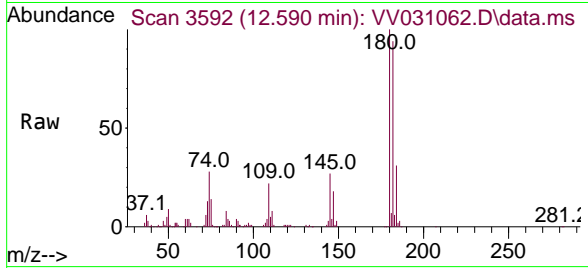
Tgt Ion	Resp	Lower	Upper
75	5658		
155	83.9	56.2	84.4
157	111.1	83.1	124.7





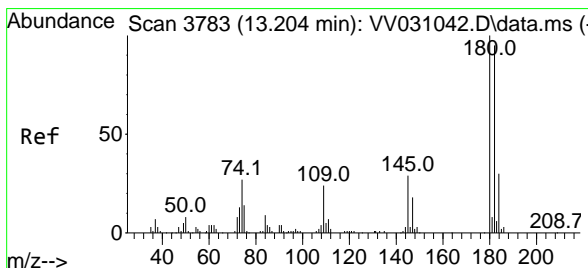
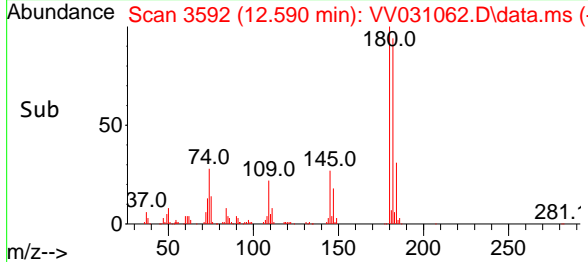
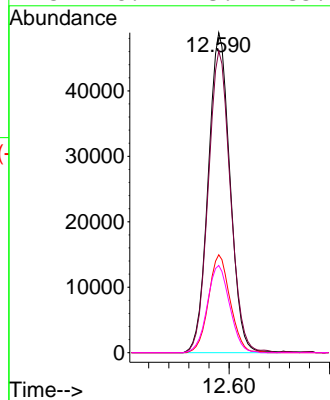
#69  
 1,3,5-Trichlorobenzene  
 Concen: 4.236 ug/L  
 RT: 12.590 min Scan# 31  
 Delta R.T. -0.000 min  
 Lab File: VV031062.D  
 Acq: 16 May 2023 18:53

Instrument : MSVOA\_V  
 ClientSampleId : VSTD005352



Tgt Ion:180 Resp: 73481

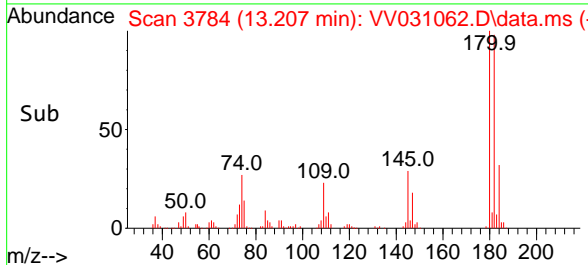
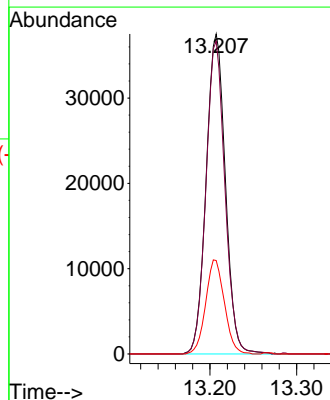
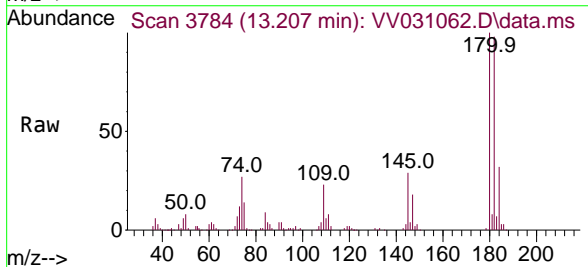
Ion	Ratio	Lower	Upper
180	100		
182	95.8	75.1	112.7
184	30.5	24.1	36.1
145	28.1	23.4	35.2

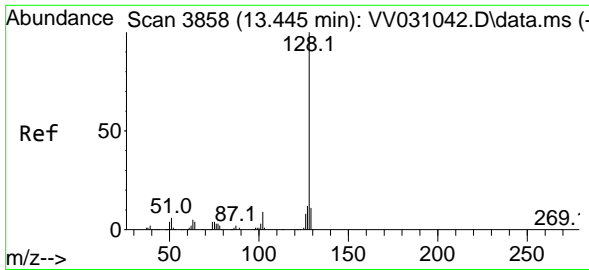


#70  
 1,2,4-trichlorobenzene  
 Concen: 4.337 ug/L  
 RT: 13.207 min Scan# 3784  
 Delta R.T. 0.003 min  
 Lab File: VV031062.D  
 Acq: 16 May 2023 18:53

Tgt Ion:180 Resp: 57814

Ion	Ratio	Lower	Upper
180	100		
182	96.2	76.0	114.0
145	28.6	22.9	34.3



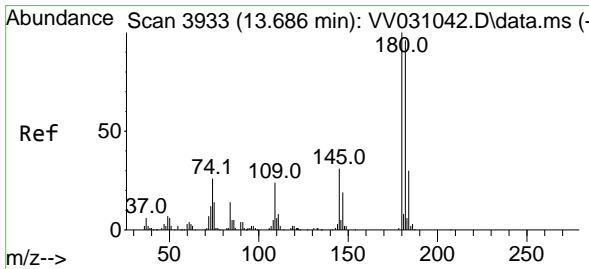
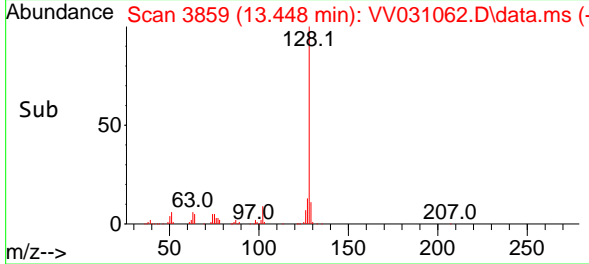
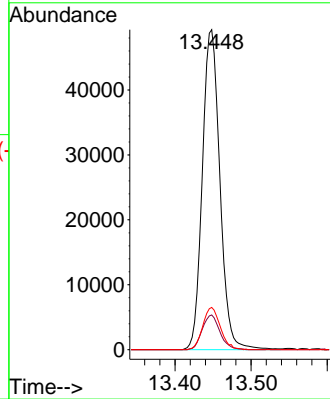
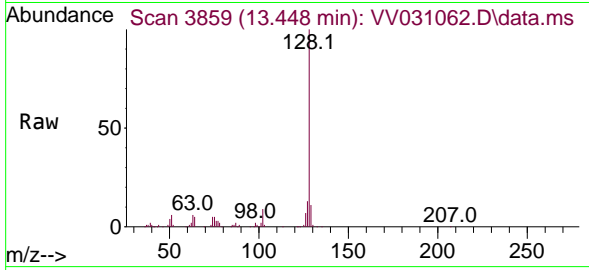


#71  
 Naphthalene  
 Concen: 4.140 ug/L  
 RT: 13.448 min Scan# 3859  
 Delta R.T. 0.003 min  
 Lab File: VV031062.D  
 Acq: 16 May 2023 18:53

Instrument : MSVOA\_V  
 ClientSampleId : VSTD005352

Tgt Ion:128 Resp: 79145

Ion	Ratio	Lower	Upper
128	100		
129	10.9	8.6	13.0
127	13.2	10.6	16.0



#72  
 1,2,3-Trichlorobenzene  
 Concen: 4.446 ug/L  
 RT: 13.689 min Scan# 3934  
 Delta R.T. 0.003 min  
 Lab File: VV031062.D  
 Acq: 16 May 2023 18:53

Tgt Ion:180 Resp: 50168

Ion	Ratio	Lower	Upper
180	100		
182	95.3	77.3	115.9
145	30.4	24.7	37.1

