

Data Path : Z:\voasrv\HPCHEM1\MSVOA_V\Data\VV051624\
 Data File : VV035624.D
 Acq On : 16 May 2024 12:44
 Operator : SY/MD
 Sample : P2484-08
 Misc : 5.0mL/MSVOA_V/WATER
 ALS Vial : 8 Sample Multiplier: 1

Instrument :
 MSVOA_V
 ClientSampleId :
 BHA20

Integration Parameters: LSCINT.P

Integrator: RTE
 Smoothing : OFF
 Sampling : 1
 Start Thrs : 0.2
 Stop Thrs : 0

Filtering: 5
 Min Area: 0 % of largest Peak
 Max Peaks: 100
 Peak Location: TOP

If leading or trailing edge < 100 prefer < Baseline drop else tangent >
 Peak separation: 5

Method : Z:\voasrv\HPCHEM1\MSVOA_V\Method\SFAMVLM050124WMA.M
 Title : VOC Analysis

Signal : TIC: VV035624.D\data.ms

peak #	R.T. min	first scan	max scan	last scan	PK TY	peak height	corr. area	corr. % max.	% of total
1	1.278	67	74	89	rVB	219184	235040	13.41%	1.708%
2	1.352	90	97	118	rVB	174330	206544	11.78%	1.501%
3	1.529	146	152	169	rVB	205265	243685	13.90%	1.771%
4	2.057	306	316	328	rBV	379268	550063	31.38%	3.998%
5	2.124	328	337	361	rVB	87152	177658	10.14%	1.291%
6	2.442	431	436	444	rVB6	1705	2207	0.13%	0.016%
7	2.471	444	445	449	rVB2	581	292	0.02%	0.002%
8	2.494	449	452	455	rBV2	534	323	0.02%	0.002%
9	2.548	463	469	473	rBV3	1150	1381	0.08%	0.010%
10	2.767	535	537	544	rVB3	430	434	0.02%	0.003%
11	2.806	544	549	550	rBV2	346	269	0.02%	0.002%
12	2.966	596	599	602	rBV2	397	230	0.01%	0.002%
13	3.098	635	640	642	rBV2	333	255	0.01%	0.002%
14	3.230	677	681	685	rVB	315	260	0.01%	0.002%
15	3.474	753	757	761	rBV3	377	311	0.02%	0.002%
16	3.516	765	770	774	rVB3	561	430	0.02%	0.003%
17	3.568	782	786	787	rBV2	490	361	0.02%	0.003%
18	3.587	787	792	796	rBV4	1805	2291	0.13%	0.017%
19	3.790	841	855	906	rBV	116420	382993	21.85%	2.784%
20	4.243	980	996	1031	rBV	278043	736619	42.02%	5.354%
21	4.474	1066	1068	1071	rBV2	428	239	0.01%	0.002%
22	4.510	1077	1079	1085	rVB3	595	359	0.02%	0.003%
23	4.709	1138	1141	1145	rVB3	351	240	0.01%	0.002%
24	4.790	1163	1166	1168	rBV3	321	234	0.01%	0.002%
25	4.851	1183	1185	1190	rVB2	272	225	0.01%	0.002%
26	4.876	1190	1193	1197	rBV2	245	238	0.01%	0.002%
27	4.950	1200	1216	1264	rBV2	649968	1752904	100.00%	12.741%
28	5.162	1279	1282	1286	rBV3	907	802	0.05%	0.006%
29	5.259	1308	1312	1316	rVB3	511	355	0.02%	0.003%
30	5.339	1331	1337	1341	rVB3	645	583	0.03%	0.004%
31	5.417	1357	1361	1363	rBV4	617	382	0.02%	0.003%
32	5.445	1368	1370	1375	rVB2	398	262	0.01%	0.002%
33	5.481	1375	1381	1382	rBV3	332	262	0.01%	0.002%
34	5.529	1385	1396	1436	rBV	532727	1119332	63.86%	8.136%
35	5.818	1475	1486	1514	rBV	82762	183415	10.46%	1.333%
36	5.934	1514	1522	1524	rBV4	22540	28242	1.61%	0.205%

Data Path : Z:\voasrv\HPCHEM1\MSVOA_V\Data\VV051624\
 Data File : VV035624.D
 Acq On : 16 May 2024 12:44
 Operator : SY/MD
 Sample : P2484-08
 Misc : 5.0mL/MSVOA_V/WATER
 ALS Vial : 8 Sample Multiplier: 1

Instrument :
 MSVOA_V
 ClientSampleId :
 BHA20

Integration Parameters: LSCINT.P

Integrator: RTE
 Smoothing : OFF Filtering: 5
 Sampling : 1 Min Area: 0 % of largest Peak
 Start Thrs: 0.2 Max Peaks: 100
 Stop Thrs : 0 Peak Location: TOP

If leading or trailing edge < 100 prefer < Baseline drop else tangent >
 Peak separation: 5

Method : Z:\voasrv\HPCHEM1\MSVOA_V\Method\SFAMVLM050124WMA.M
 Title : VOC Analysis

37	5.982	1527	1537	1568	rVB	403001	865034	49.35%	6.288%
38	6.439	1677	1679	1681	rBV2	524	301	0.02%	0.002%
39	6.458	1683	1685	1687	rVV2	618	299	0.02%	0.002%
40	6.574	1717	1721	1722	rBV2	843	498	0.03%	0.004%
41	6.629	1734	1738	1741	rVB3	454	345	0.02%	0.003%
42	6.703	1757	1761	1764	rVB4	552	417	0.02%	0.003%
43	6.735	1768	1771	1777	rVB5	335	350	0.02%	0.003%
44	6.828	1796	1800	1803	rVB3	471	394	0.02%	0.003%
45	6.867	1806	1812	1815	rBV4	486	458	0.03%	0.003%
46	6.908	1815	1825	1860	rBV	182341	361851	20.64%	2.630%
47	7.137	1893	1896	1898	rBV3	824	515	0.03%	0.004%
48	7.240	1916	1928	1958	rBV	722429	1297226	74.00%	9.429%
49	7.548	2015	2024	2058	rBV	125593	245523	14.01%	1.785%
50	7.786	2094	2098	2101	rBV3	700	540	0.03%	0.004%
51	7.873	2115	2125	2133	rBV6	2064	4052	0.23%	0.029%
52	7.915	2136	2138	2143	rVB3	921	456	0.03%	0.003%
53	7.947	2143	2148	2150	rBV3	477	332	0.02%	0.002%
54	7.982	2154	2159	2162	rBV4	795	815	0.05%	0.006%
55	8.024	2162	2172	2213	rBV2	368530	787822	44.94%	5.726%
56	8.500	2317	2320	2323	rBV4	564	354	0.02%	0.003%
57	8.564	2337	2340	2344	rVB4	940	539	0.03%	0.004%
58	8.622	2353	2358	2361	rBV3	454	489	0.03%	0.004%
59	8.780	2396	2407	2437	rBV	833333	1393968	79.52%	10.132%
60	9.011	2477	2479	2482	rBV2	357	290	0.02%	0.002%
61	9.079	2498	2500	2501	rBV2	487	269	0.02%	0.002%
62	9.111	2507	2510	2515	rVB5	638	464	0.03%	0.003%
63	9.159	2523	2525	2530	rVB4	434	256	0.01%	0.002%
64	9.217	2540	2543	2548	rVV2	555	423	0.02%	0.003%
65	9.285	2560	2564	2566	rBV2	397	304	0.02%	0.002%
66	9.301	2566	2569	2571	rVV	377	263	0.02%	0.002%
67	9.381	2591	2594	2598	rVB3	359	261	0.01%	0.002%
68	9.487	2623	2627	2630	rBV4	754	494	0.03%	0.004%
69	9.664	2675	2682	2687	rBV3	6050	9786	0.56%	0.071%
70	9.866	2742	2745	2748	rBV2	409	245	0.01%	0.002%
71	9.911	2756	2759	2762	rBV	438	344	0.02%	0.003%
72	9.937	2765	2767	2772	rVB2	431	288	0.02%	0.002%
73	9.966	2772	2776	2782	rBV2	430	418	0.02%	0.003%
74	10.149	2819	2833	2853	rBV	445203	713568	40.71%	5.187%
75	10.323	2881	2887	2896	rVB3	4106	5848	0.33%	0.043%
76	10.381	2901	2905	2908	rBV2	370	313	0.02%	0.002%

Data Path : Z:\voasrv\HPCHEM1\MSVOA_V\Data\VV051624\
 Data File : VV035624.D
 Acq On : 16 May 2024 12:44
 Operator : SY/MD
 Sample : P2484-08
 Misc : 5.0mL/MSVOA_V/WATER
 ALS Vial : 8 Sample Multiplier: 1

Instrument :
 MSVOA_V
 ClientSampleId :
 BHA20

Integration Parameters: LSCINT.P

Integrator: RTE
 Smoothing : OFF Filtering: 5
 Sampling : 1 Min Area: 0 % of largest Peak
 Start Thrs: 0.2 Max Peaks: 100
 Stop Thrs : 0 Peak Location: TOP

If leading or trailing edge < 100 prefer < Baseline drop else tangent >
 Peak separation: 5

Method : Z:\voasrv\HPCHEM1\MSVOA_V\Method\SFAMVLM050124WMA.M
 Title : VOC Analysis

77	10.866	3051	3056	3058	rBV2	576	435	0.02%	0.003%
78	11.182	3143	3154	3180	rBV	757529	1191309	67.96%	8.659%
79	11.445	3234	3236	3241	rBV3	550	439	0.03%	0.003%
80	11.503	3241	3254	3260	rBV4	7833	16248	0.93%	0.118%
81	11.558	3260	3271	3297	rVB	766988	1215267	69.33%	8.833%
82	11.915	3380	3382	3387	rVB2	589	349	0.02%	0.003%
83	11.944	3388	3391	3394	rBV	374	305	0.02%	0.002%
84	11.960	3394	3396	3402	rBV4	795	611	0.03%	0.004%
85	11.992	3402	3406	3409	rBV4	422	373	0.02%	0.003%
86	12.169	3458	3461	3462	rBV2	404	247	0.01%	0.002%
87	12.300	3497	3502	3503	rBV3	804	580	0.03%	0.004%
88	12.333	3508	3512	3515	rVV3	650	466	0.03%	0.003%
89	12.490	3559	3561	3564	rBV	283	227	0.01%	0.002%
90	12.567	3582	3585	3589	rBV2	487	434	0.02%	0.003%
91	12.593	3589	3593	3596	rVV3	608	562	0.03%	0.004%
92	12.609	3596	3598	3603	rVB2	475	279	0.02%	0.002%
93	12.706	3626	3628	3631	rVB2	539	308	0.02%	0.002%
94	12.808	3657	3660	3666	rBV	435	469	0.03%	0.003%
95	13.387	3837	3840	3842	rBV2	407	277	0.02%	0.002%
96	13.448	3854	3859	3864	rBV2	640	880	0.05%	0.006%
97	14.030	4037	4040	4044	rBV2	443	299	0.02%	0.002%
98	14.349	4137	4139	4141	rBV2	452	264	0.02%	0.002%
99	14.574	4207	4209	4215	rBV5	537	456	0.03%	0.003%
100	14.812	4282	4283	4286	rBV3	431	314	0.02%	0.002%

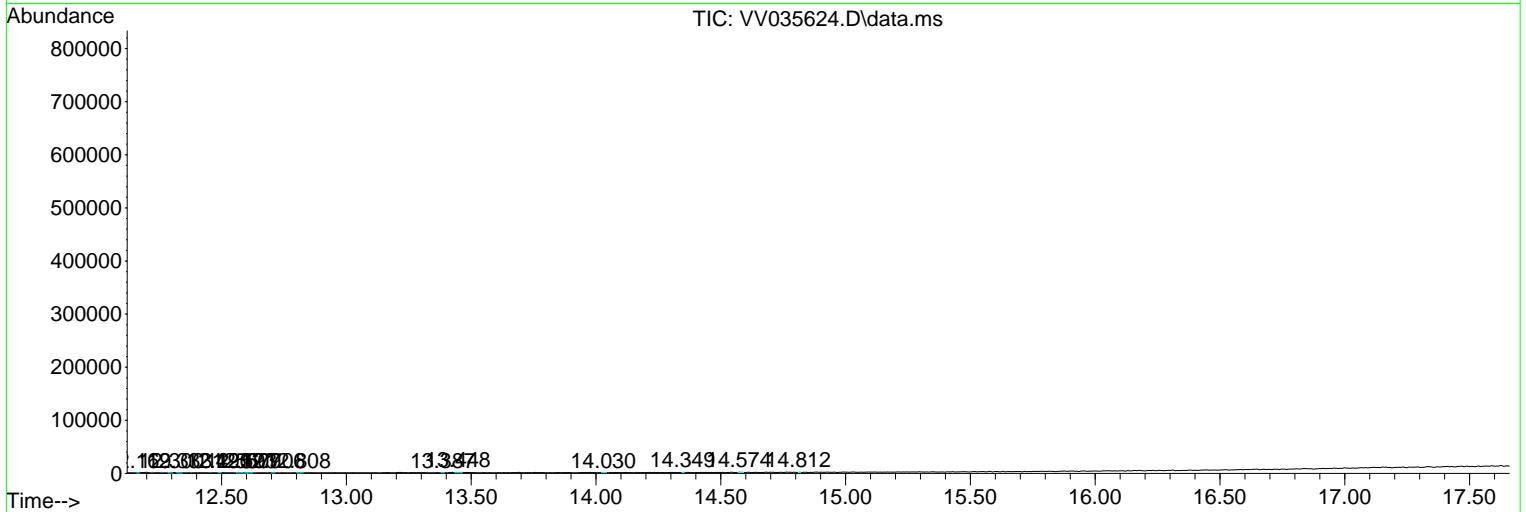
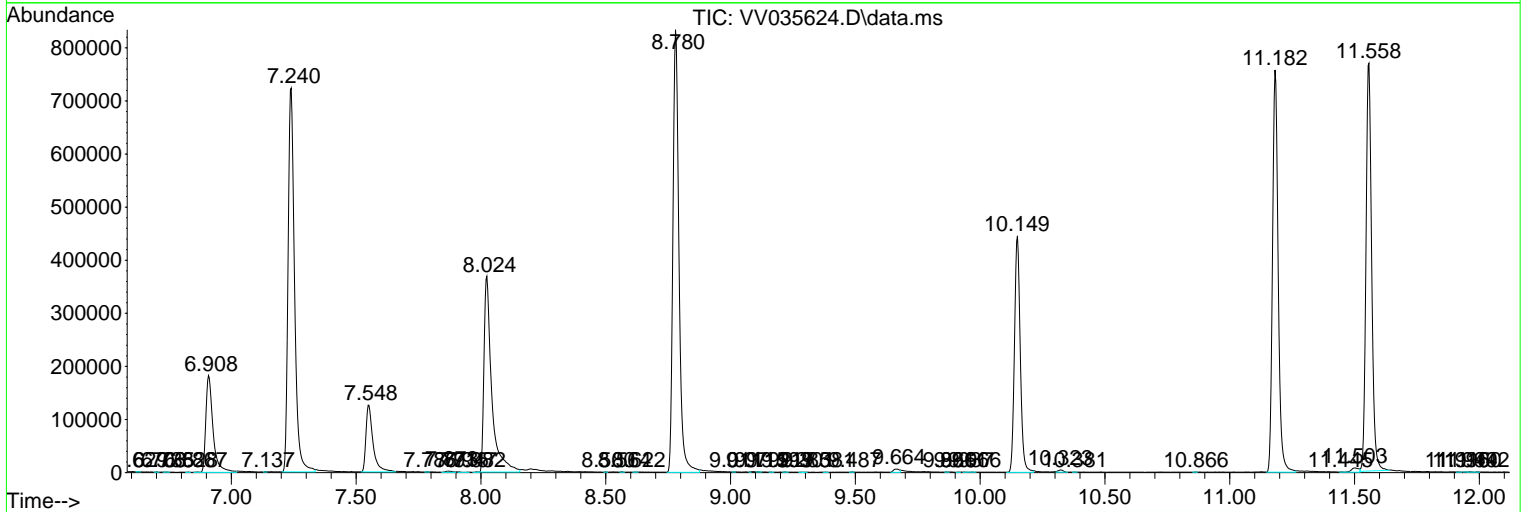
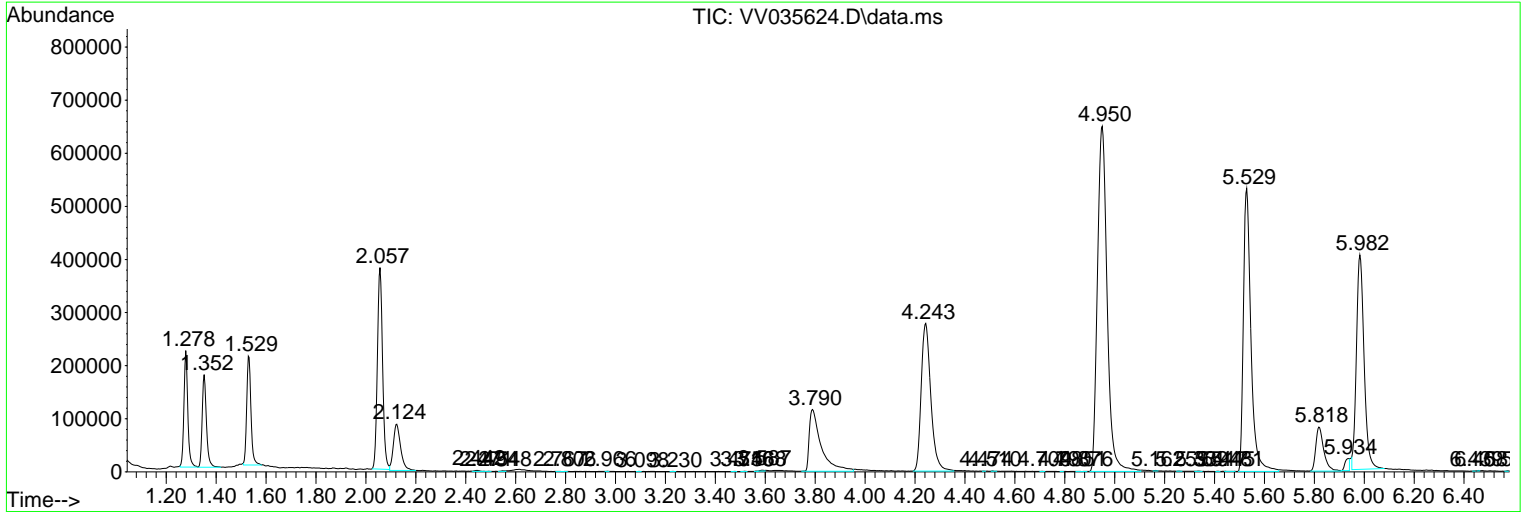
Sum of corrected areas: 13757530

Data Path : Z:\voasrv\HPCHEM1\MSVOA_V\Data\VV051624\
 Data File : VV035624.D
 Acq On : 16 May 2024 12:44
 Operator : SY/MD
 Sample : P2484-08
 Misc : 5.0mL/MSVOA_V/WATER
 ALS Vial : 8 Sample Multiplier: 1

Instrument :
 MSVOA_V
 ClientSampleId :
 BHA20

Quant Method : Z:\voasrv\HPCHEM1\MSVOA_V\Method\SFAMVLM050124WMA.M
 Quant Title : VOC Analysis

TIC Library : C:\Database\NIST20.L
 TIC Integration Parameters: LSCINT.P



Library Search Compound Report

Data Path : Z:\voasrv\HPCHEM1\MSVOA_V\Data\VV051624\
Data File : VV035624.D
Acq On : 16 May 2024 12:44
Operator : SY/MD
Sample : P2484-08
Misc : 5.0mL/MSVOA_V/WATER
ALS Vial : 8 Sample Multiplier: 1

Instrument :
MSVOA_V
ClientSampleId :
BHA20

Quant Method : Z:\voasrv\HPCHEM1\MSVOA_V\Method\SFAMVLM050124WMA.M
Quant Title : VOC Analysis

TIC Library : C:\Database\NIST20.L
TIC Integration Parameters: LSCINT.P

No Library Search Compounds Detected

Data Path : Z:\voasrv\HPCHEM1\MSVOA_V\Data\VV051624\
Data File : VV035624.D
Acq On : 16 May 2024 12:44
Operator : SY/MD
Sample : P2484-08
Misc : 5.0mL/MSVOA_V/WATER
ALS Vial : 8 Sample Multiplier: 1

Instrument :
MSVOA_V
ClientSampleId :
BHA20

Quant Method : Z:\voasrv\HPCHEM1\MSVOA_V\Method\SFAMVLM050124WMA.M
Quant Title : VOC Analysis

TIC Library : C:\Database\NIST0.L
TIC Integration Parameters: LSCINT.P

TIC Top Hit name	RT	EstConc	Units	Response	--Internal Standard--			
					#	RT	Resp	Conc
