

Data Path : Z:\voasrv\HPCHEM1\MSVOA_V\Data\VW052324\
 Data File : VW035696.D
 Acq On : 23 May 2024 12:16
 Operator : SY/MD
 Sample : P2568-06
 Misc : 6.04g/10.0mL/MSVOA_V/SOIL/A
 ALS Vial : 10 Sample Multiplier: 1

Instrument :
 MSVOA_V
ClientSampleId :
 BH5Q7

Quant Time: May 24 01:47:11 2024
 Quant Method : Z:\voasrv\HPCHEM1\MSVOA_V\Method\SFAMVLM050624SMA.M
 Quant Title : VOC Analysis
 QLast Update : Fri May 24 01:44:38 2024
 Response via : Initial Calibration

Compound	R.T.	QIon	Response	Conc	Units	Dev(Min)

Internal Standards						
1) 1,4-Difluorobenzene	5.532	114	396381	25.000	ug/L	0.00
28) Chlorobenzene-d5	8.783	117	383910	25.000	ug/L	0.00
58) 1,4-Dichlorobenzene-d4	11.185	152	135933	25.000	ug/L	0.00
System Monitoring Compounds						
4) Vinyl Chloride-d3	1.272	65	127396	20.794	ug/L	0.00
Spiked Amount	25.000	Range 30 - 150	Recovery =	83.160%		
7) Chloroethane-d5	1.526	69	125168	25.325	ug/L	0.00
Spiked Amount	25.000	Range 30 - 150	Recovery =	101.280%		
11) 1,1-Dichloroethene-d2	2.050	65	59012	21.757	ug/L	0.00
Spiked Amount	25.000	Range 45 - 110	Recovery =	87.040%		
21) 2-Butanone-d5	3.838	46	72514	41.707	ug/L	0.00
Spiked Amount	50.000	Range 20 - 135	Recovery =	83.420%		
24) Chloroform-d	4.243	84	342827	29.092	ug/L	0.00
Spiked Amount	25.000	Range 40 - 150	Recovery =	116.360%		
26) 1,2-Dichloroethane-d4	4.937	65	199719	34.283	ug/L	0.00
Spiked Amount	25.000	Range 70 - 130	Recovery =	137.120%#		
32) Benzene-d6	4.957	84	582251	27.706	ug/L	0.00
Spiked Amount	25.000	Range 20 - 135	Recovery =	110.840%		
36) 1,2-Dichloropropane-d6	5.986	67	220457	33.993	ug/L	0.00
Spiked Amount	25.000	Range 70 - 120	Recovery =	135.960%#		
41) Toluene-d8	7.243	98	448220	23.965	ug/L	0.00
Spiked Amount	25.000	Range 30 - 130	Recovery =	95.840%		
43) trans-1,3-Dichloroprop...	7.555	79	66334	23.916	ug/L	0.00
Spiked Amount	25.000	Range 30 - 135	Recovery =	95.680%		
47) 2-Hexanone-d5	8.034	63	42481	36.427	ug/L	0.00
Spiked Amount	50.000	Range 20 - 135	Recovery =	72.860%		
56) 1,1,2,2-Tetrachloroeth...	10.153	84	201143	32.186	ug/L	0.00
Spiked Amount	25.000	Range 45 - 120	Recovery =	128.760%#		
66) 1,2-Dichlorobenzene-d4	11.558	152	160292	33.978	ug/L	0.00
Spiked Amount	25.000	Range 75 - 120	Recovery =	135.920%#		

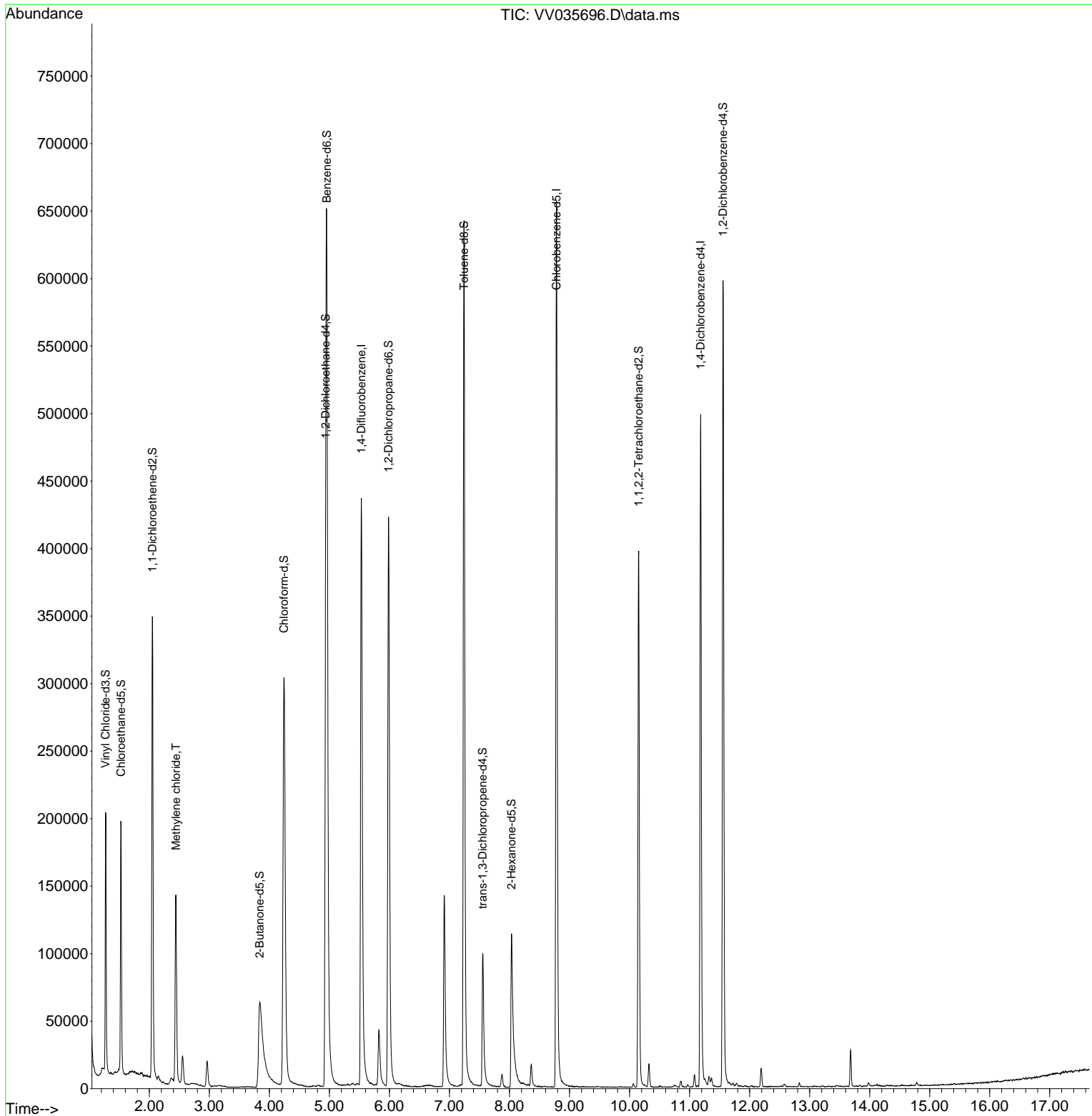
Target Compounds						Qvalue
16) Methylene chloride	2.442	84	61835	6.765	ug/L	94

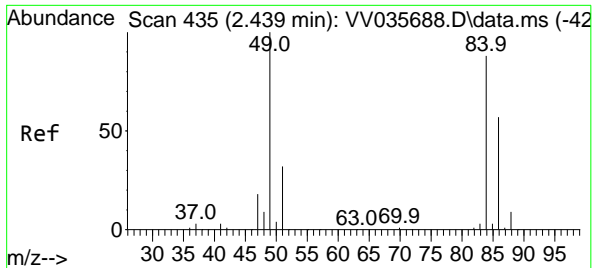
(#) = qualifier out of range (m) = manual integration (+) = signals summed

Data Path : Z:\voasrv\HPCHEM1\MSVOA_V\Data\VV052324\
 Data File : VV035696.D
 Acq On : 23 May 2024 12:16
 Operator : SY/MD
 Sample : P2568-06
 Misc : 6.04g/10.0mL/MSVOA_V/SOIL/A
 ALS Vial : 10 Sample Multiplier: 1

Instrument :
 MSVOA_V
 ClientSampleId :
 BH5Q7

Quant Time: May 24 01:47:11 2024
 Quant Method : Z:\voasrv\HPCHEM1\MSVOA_V\Method\SFAMVLM050624SMA.M
 Quant Title : VOC Analysis
 QLast Update : Fri May 24 01:44:38 2024
 Response via : Initial Calibration





#16
 Methylene chloride
 Concen: 6.765 ug/L
 RT: 2.442 min Scan# 41
 Delta R.T. 0.003 min
 Lab File: VV035696.D
 Acq: 23 May 2024 12:16

Instrument : MSVOA_V
 ClientSampleId : BH5Q7

Tgt Ion: 84 Resp: 61835

Ion	Ratio	Lower	Upper
84	100		
86	65.9	43.8	81.3
49	114.4	75.3	139.9

