

Data Path : Z:\voasrv\HPCHEM1\MSVOA_V\Data\VV052324\
 Data File : VV035701.D
 Acq On : 23 May 2024 14:10
 Operator : SY/MD
 Sample : P2568-16
 Misc : 6.56g/10.0mL/MSVOA_V/SOIL/A
 ALS Vial : 15 Sample Multiplier: 1

Instrument :
 MSVOA_V
 ClientSampleId :
 BH636

Integration Parameters: LSCINT.P

Integrator: RTE
 Smoothing : OFF
 Sampling : 1
 Start Thrs : 0.2
 Stop Thrs : 0

Filtering: 5
 Min Area: 0 % of largest Peak
 Max Peaks: 100
 Peak Location: TOP

If leading or trailing edge < 100 prefer < Baseline drop else tangent >
 Peak separation: 5

Method : Z:\voasrv\HPCHEM1\MSVOA_V\Method\SFAMVLM050624SMA.M
 Title : VOC Analysis

Signal : TIC: VV035706.D\data.ms

peak #	R.T. min	first scan	max scan	last scan	PK TY	peak height	corr. area	corr. % max.	% of total
1	1.272	66	72	89	rVB	182990	199345	12.99%	1.854%
2	1.526	144	151	164	rVB	171008	202791	13.22%	1.886%
3	2.050	305	314	334	rVB	327401	487137	31.75%	4.531%
4	2.365	402	412	415	rBV2	3436	5953	0.39%	0.055%
5	2.442	425	436	460	rVB	161262	273067	17.80%	2.540%
6	2.555	461	471	486	rVB	25882	52830	3.44%	0.491%
7	2.908	578	581	584	rVB3	539	396	0.03%	0.004%
8	2.960	584	597	614	rBV2	19499	42311	2.76%	0.394%
9	3.075	631	633	638	rVB4	669	479	0.03%	0.004%
10	3.111	639	644	646	rBV3	329	330	0.02%	0.003%
11	3.146	651	655	657	rBV	511	356	0.02%	0.003%
12	3.304	699	704	707	rBV2	425	378	0.02%	0.004%
13	3.326	707	711	716	rVB2	307	299	0.02%	0.003%
14	3.458	749	752	756	rBV2	324	315	0.02%	0.003%
15	3.516	767	770	775	rVB3	377	332	0.02%	0.003%
16	3.651	806	812	815	rBV3	387	412	0.03%	0.004%
17	3.841	850	871	905	rBV2	61744	308729	20.12%	2.871%
18	4.246	981	997	1035	rBV	263462	692159	45.12%	6.438%
19	4.493	1072	1074	1078	rBV2	498	334	0.02%	0.003%
20	4.532	1082	1086	1088	rBV3	729	527	0.03%	0.005%
21	4.802	1163	1170	1171	rBV2	533	529	0.03%	0.005%
22	4.953	1200	1217	1262	rBV2	585755	1534116	100.00%	14.268%
23	5.207	1292	1296	1302	rBV8	617	550	0.04%	0.005%
24	5.272	1314	1316	1320	rVB3	507	350	0.02%	0.003%
25	5.365	1342	1345	1348	rBV3	790	569	0.04%	0.005%
26	5.468	1373	1377	1383	rBV4	541	597	0.04%	0.006%
27	5.532	1386	1397	1434	rBV	431315	908690	59.23%	8.451%
28	5.738	1459	1461	1464	rVB3	717	431	0.03%	0.004%
29	5.828	1477	1489	1518	rVB3	36167	86831	5.66%	0.808%
30	5.985	1526	1538	1570	rBV	358368	762396	49.70%	7.091%
31	6.262	1621	1624	1627	rBV4	658	406	0.03%	0.004%
32	6.297	1632	1635	1639	rVV2	602	367	0.02%	0.003%
33	6.558	1711	1716	1717	rBV3	611	446	0.03%	0.004%
34	6.670	1747	1751	1756	rBV3	633	594	0.04%	0.006%
35	6.763	1777	1780	1786	rVB3	966	859	0.06%	0.008%
36	6.796	1786	1790	1794	rBV3	814	672	0.04%	0.006%

Data Path : Z:\voasrv\HPCHEM1\MSVOA_V\Data\VV052324\
 Data File : VV035701.D
 Acq On : 23 May 2024 14:10
 Operator : SY/MD
 Sample : P2568-16
 Misc : 6.56g/10.0mL/MSVOA_V/SOIL/A
 ALS Vial : 15 Sample Multiplier: 1

Instrument :
 MSVOA_V
 ClientSampleId :
 BH636

Integration Parameters: LSCINT.P

Integrator: RTE
 Smoothing : OFF
 Sampling : 1
 Start Thrs : 0.2
 Stop Thrs : 0

Filtering: 5
 Min Area: 0 % of largest Peak
 Max Peaks: 100
 Peak Location: TOP

If leading or trailing edge < 100 prefer < Baseline drop else tangent >
 Peak separation: 5

Method : Z:\voasrv\HPCHEM1\MSVOA_V\Method\SFAMVLM050624SMA.M
 Title : VOC Analysis

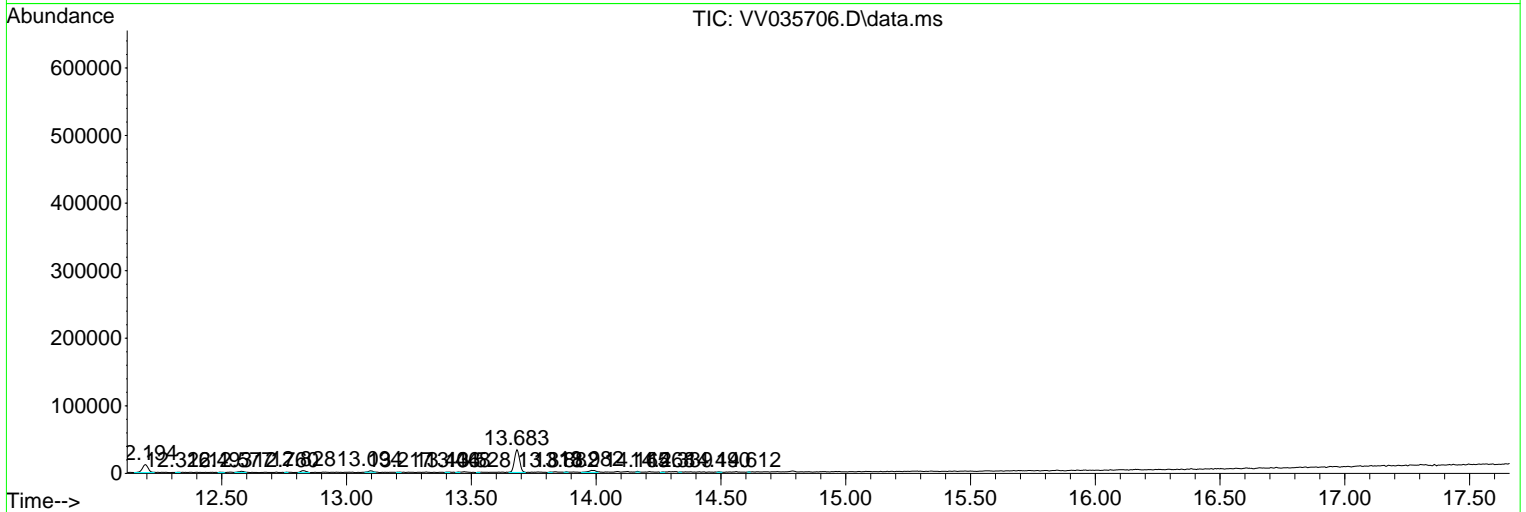
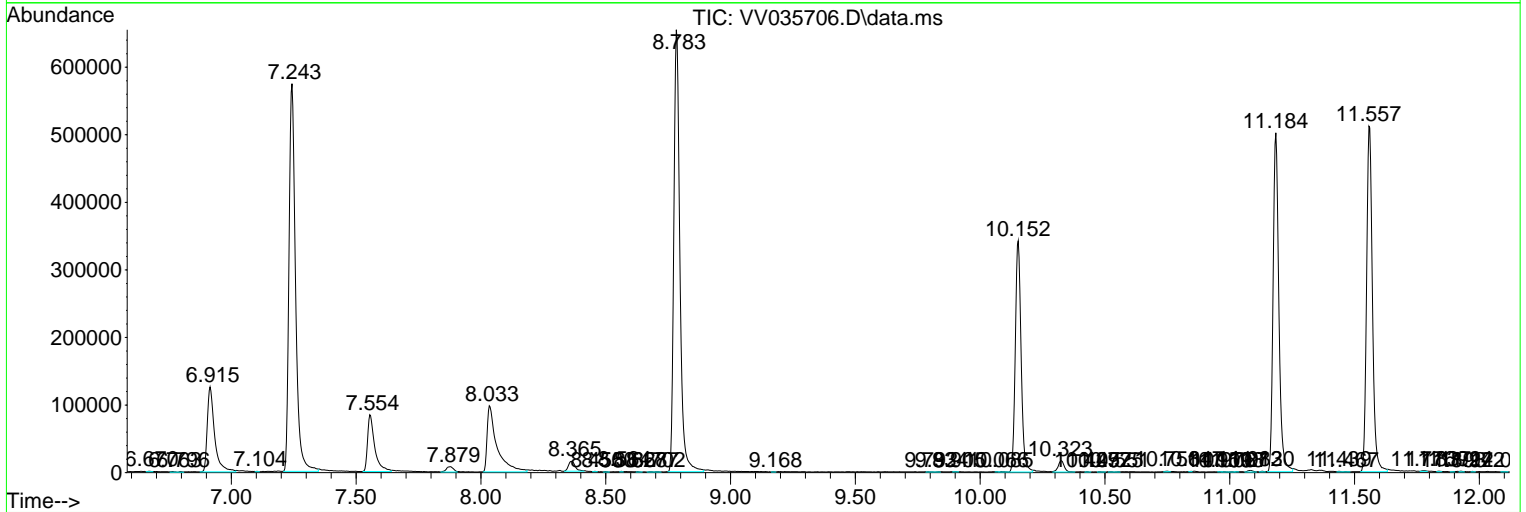
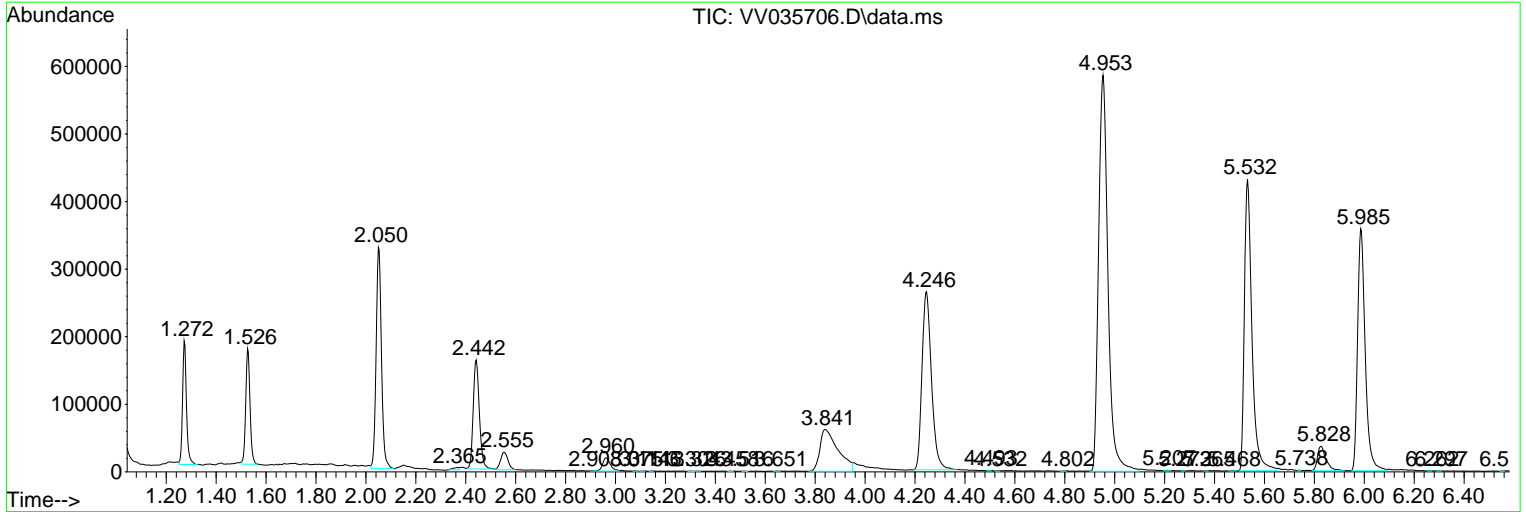
37	6.915	1814	1827	1859	rBV	125717	255269	16.64%	2.374%
38	7.104	1883	1886	1889	rVB2	726	472	0.03%	0.004%
39	7.243	1918	1929	1962	rBV	573538	1042193	67.93%	9.693%
40	7.554	2017	2026	2053	rBV2	83979	165712	10.80%	1.541%
41	7.879	2114	2127	2135	rBV3	7652	15205	0.99%	0.141%
42	8.033	2167	2175	2222	rBV	97825	261710	17.06%	2.434%
43	8.365	2268	2278	2293	rBV3	14441	27435	1.79%	0.255%
44	8.455	2303	2306	2310	rBV3	539	408	0.03%	0.004%
45	8.500	2317	2320	2325	rVB4	708	516	0.03%	0.005%
46	8.564	2337	2340	2342	rBV3	672	372	0.02%	0.003%
47	8.628	2358	2360	2366	rVB2	575	351	0.02%	0.003%
48	8.677	2371	2375	2381	rBV3	596	707	0.05%	0.007%
49	8.702	2381	2383	2389	rBV3	521	468	0.03%	0.004%
50	8.783	2397	2408	2442	rBV	654052	1100927	71.76%	10.239%
51	9.168	2526	2528	2532	rBV2	446	388	0.03%	0.004%
52	9.792	2719	2722	2730	rVB3	645	717	0.05%	0.007%
53	9.834	2730	2735	2737	rBV2	628	498	0.03%	0.005%
54	9.905	2752	2757	2760	rVB4	528	457	0.03%	0.004%
55	10.066	2805	2807	2810	rVB2	618	369	0.02%	0.003%
56	10.085	2810	2813	2822	rVB2	563	658	0.04%	0.006%
57	10.152	2822	2834	2852	rBV	342157	548837	35.78%	5.105%
58	10.323	2877	2887	2905	rVB	16652	27959	1.82%	0.260%
59	10.429	2917	2920	2925	rVB2	523	414	0.03%	0.004%
60	10.477	2932	2935	2943	rVB4	497	586	0.04%	0.005%
61	10.525	2946	2950	2953	rVB2	468	380	0.02%	0.004%
62	10.551	2953	2958	2961	rBV3	356	355	0.02%	0.003%
63	10.750	3015	3020	3024	rVV4	731	908	0.06%	0.008%
64	10.847	3046	3050	3051	rBV2	622	408	0.03%	0.004%
65	10.959	3082	3085	3088	rVV2	535	358	0.02%	0.003%
66	10.976	3088	3090	3096	rVB2	443	341	0.02%	0.003%
67	11.008	3096	3100	3104	rBV3	305	322	0.02%	0.003%
68	11.027	3104	3106	3109	rBV	604	371	0.02%	0.003%
69	11.082	3116	3123	3131	rBV6	2267	3279	0.21%	0.030%
70	11.130	3134	3138	3142	rBV3	883	712	0.05%	0.007%
71	11.184	3144	3155	3176	rBV	501475	800186	52.16%	7.442%
72	11.439	3231	3234	3239	rVB3	664	477	0.03%	0.004%
73	11.467	3239	3243	3248	rVB4	539	591	0.04%	0.005%
74	11.557	3260	3271	3294	rBV	511238	830054	54.11%	7.720%
75	11.776	3334	3339	3344	rBV6	1046	1376	0.09%	0.013%
76	11.837	3355	3358	3362	rBV4	590	596	0.04%	0.006%

Data Path : Z:\voasrv\HPCHEM1\MSVOA_V\Data\VV052324\
 Data File : VV035701.D
 Acq On : 23 May 2024 14:10
 Operator : SY/MD
 Sample : P2568-16
 Misc : 6.56g/10.0mL/MSVOA_V/SOIL/A
 ALS Vial : 15 Sample Multiplier: 1

Instrument :
 MSVOA_V
 ClientSampleId :
 BH636

Quant Method : Z:\voasrv\HPCHEM1\MSVOA_V\Method\SFAMVLM050624SMA.M
 Quant Title : VOC Analysis

TIC Library : C:\Database\NIST20.L
 TIC Integration Parameters: LSCINT.P



Data Path : Z:\voasrv\HPCHEM1\MSVOA_V\Data\VV052324\
 Data File : VV035701.D
 Acq On : 23 May 2024 14:10
 Operator : SY/MD
 Sample : P2568-16
 Misc : 6.56g/10.0mL/MSVOA_V/SOIL/A
 ALS Vial : 15 Sample Multiplier: 1

Instrument :
 MSVOA_V
 ClientSampleId :
 BH636

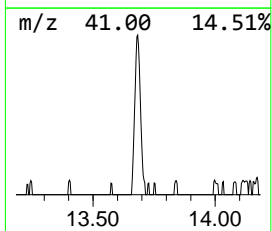
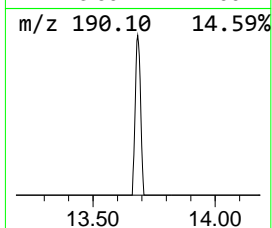
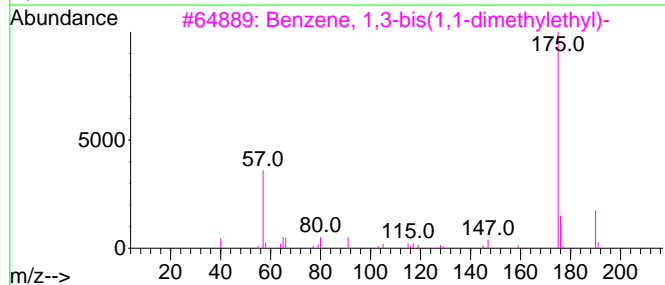
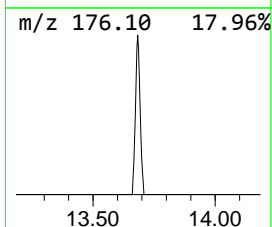
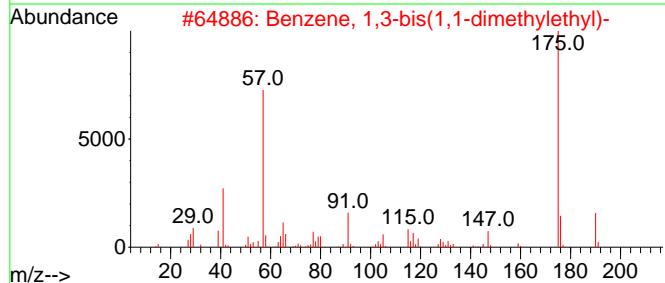
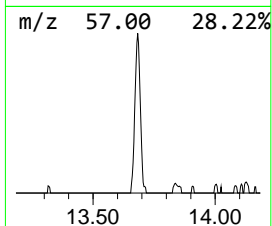
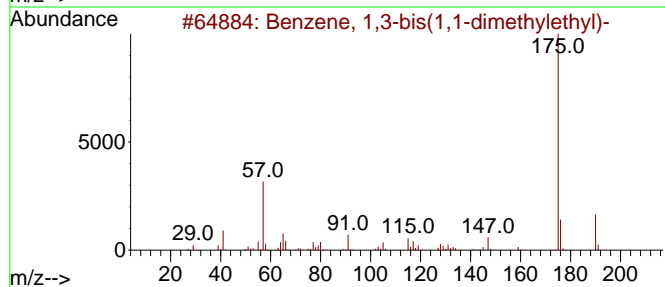
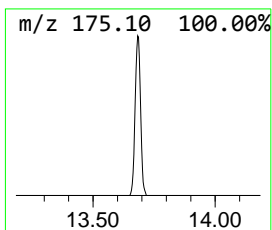
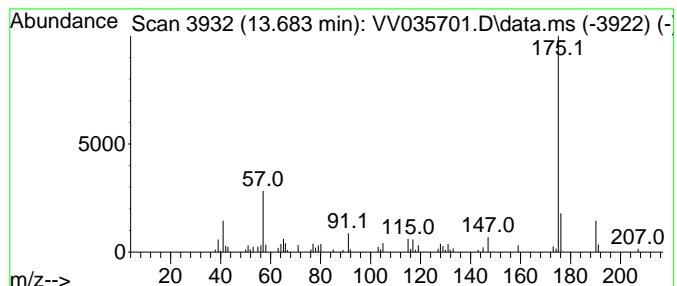
Quant Method : Z:\voasrv\HPCHEM1\MSVOA_V\Method\SFAMVLM050624SMA.M
 Quant Title : VOC Analysis

TIC Library : C:\Database\NIST20.L
 TIC Integration Parameters: LSCINT.P

 Peak Number 4 Benzene, 1,3-bis(1,1-dimeth... Concentration Rank 3

R.T.	EstConc	Area	Relative to ISTD	R.T.
13.683	1.51 ug/L	48292	1,4-Dichlorobenzene-d4	11.185

Hit#	of	5	Tentative ID	MW	MolForm	CAS#	Qual
1			Benzene, 1,3-bis(1,1-dimethyleth...	190	C14H22	001014-60-4	97
2			Benzene, 1,3-bis(1,1-dimethyleth...	190	C14H22	001014-60-4	94
3			Benzene, 1,3-bis(1,1-dimethyleth...	190	C14H22	001014-60-4	90
4			Benzene, 1,4-bis(1,1-dimethyleth...	190	C14H22	001012-72-2	80
5			Benzene, 1,4-bis(1,1-dimethyleth...	190	C14H22	001012-72-2	80



Data Path : Z:\voasrv\HPCHEM1\MSVOA_V\Data\VV052324\
Data File : VV035701.D
Acq On : 23 May 2024 14:10
Operator : SY/MD
Sample : P2568-16
Misc : 6.56g/10.0mL/MSVOA_V/SOIL/A
ALS Vial : 15 Sample Multiplier: 1

Instrument :
MSVOA_V
ClientSampleId :
BH636

Quant Method : Z:\voasrv\HPCHEM1\MSVOA_V\Method\SFAMVLM050624SMA.M
Quant Title : VOC Analysis

TIC Library : C:\Database\NIST0.L
TIC Integration Parameters: LSCINT.P

TIC Top Hit name	RT	EstConc	Units	Response	--Internal Standard--			
					#	RT	Resp	Conc
Benzene, 1,3-bi...	13.683	1.5	ug/L	48292	3	11.185	800186	25.0