

Data Path : Z:\voasrv\HPCHEM1\MSVOA_V\Data\VW052824\
 Data File : VW035844.D
 Acq On : 28 May 2024 14:26
 Operator : SY/MD
 Sample : P2586-14
 Misc : 5.64g/10.0mL/MSVOA_V/SOIL/B
 ALS Vial : 15 Sample Multiplier: 1

Instrument :
 MSVOA_V
 ClientSampleId :

Quant Time: May 29 02:27:06 2024
 Quant Method : Z:\voasrv\HPCHEM1\MSVOA_V\Method\SFAMVLM050624SMA.M
 Quant Title : VOC Analysis
 QLast Update : Wed May 29 02:22:14 2024
 Response via : Initial Calibration

Compound	R.T.	QIon	Response	Conc	Units	Dev(Min)

Internal Standards						
1) 1,4-Difluorobenzene	5.529	114	735386	25.000	ug/L	0.00
28) Chlorobenzene-d5	8.783	117	695058	25.000	ug/L	0.00
58) 1,4-Dichlorobenzene-d4	11.185	152	248210	25.000	ug/L	0.00
System Monitoring Compounds						
4) Vinyl Chloride-d3	1.272	65	208117	18.310	ug/L	0.00
Spiked Amount	25.000	Range 30 - 150	Recovery =	73.240%		
7) Chloroethane-d5	1.526	69	169042	18.435	ug/L	0.00
Spiked Amount	25.000	Range 30 - 150	Recovery =	73.760%		
11) 1,1-Dichloroethene-d2	2.050	65	91406	18.165	ug/L	0.00
Spiked Amount	25.000	Range 45 - 110	Recovery =	72.640%		
21) 2-Butanone-d5	3.841	46	17925	5.557	ug/L	-0.02
Spiked Amount	50.000	Range 20 - 135	Recovery =	11.120%#		
24) Chloroform-d	4.243	84	371159	16.977	ug/L	0.00
Spiked Amount	25.000	Range 40 - 150	Recovery =	67.920%		
26) 1,2-Dichloroethane-d4	4.937	65	205345	18.999	ug/L	0.00
Spiked Amount	25.000	Range 70 - 130	Recovery =	76.000%		
32) Benzene-d6	4.956	84	719009	18.898	ug/L	0.00
Spiked Amount	25.000	Range 20 - 135	Recovery =	75.600%		
36) 1,2-Dichloropropane-d6	5.985	67	234795	19.997	ug/L	0.00
Spiked Amount	25.000	Range 70 - 120	Recovery =	80.000%		
41) Toluene-d8	7.243	98	596248	17.608	ug/L	0.00
Spiked Amount	25.000	Range 30 - 130	Recovery =	70.440%		
43) trans-1,3-Dichloroprop...	7.554	79	82805	16.490	ug/L	0.00
Spiked Amount	25.000	Range 30 - 135	Recovery =	65.960%		
47) 2-Hexanone-d5	8.034	63	44111	20.892	ug/L	0.00
Spiked Amount	50.000	Range 20 - 135	Recovery =	41.780%		
56) 1,1,2,2-Tetrachloroeth...	10.152	84	160644	14.198	ug/L	0.00
Spiked Amount	25.000	Range 45 - 120	Recovery =	56.800%		
66) 1,2-Dichlorobenzene-d4	11.557	152	161892	18.794	ug/L	0.00
Spiked Amount	25.000	Range 75 - 120	Recovery =	75.160%		

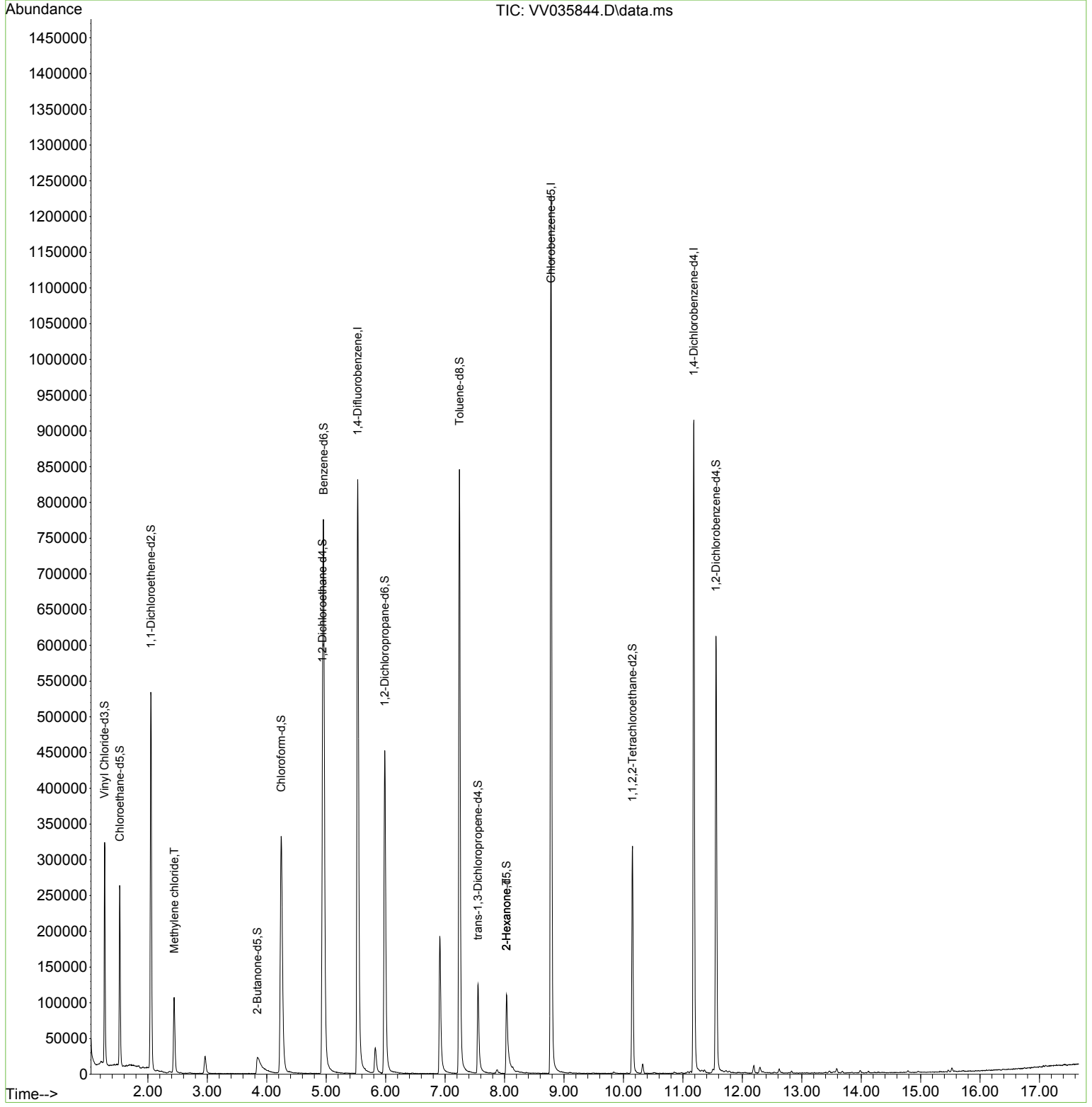
Target Compounds						Qvalue
16) Methylene chloride	2.442	84	47775	2.817	ug/L	95
48) 2-Hexanone	8.034	43	4716	0.875	ug/L #	65

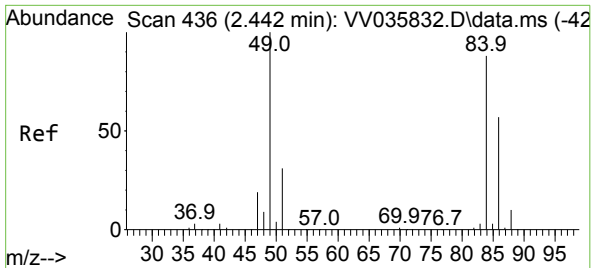
(#) = qualifier out of range (m) = manual integration (+) = signals summed

Data Path : Z:\voasrv\HPCHEM1\MSVOA_V\Data\VV052824\
 Data File : VV035844.D
 Acq On : 28 May 2024 14:26
 Operator : SY/MD
 Sample : P2586-14
 Misc : 5.64g/10.0mL/MSVOA_V/SOIL/B
 ALS Vial : 15 Sample Multiplier: 1

Instrument :
 MSVOA_V
 ClientSampleId :

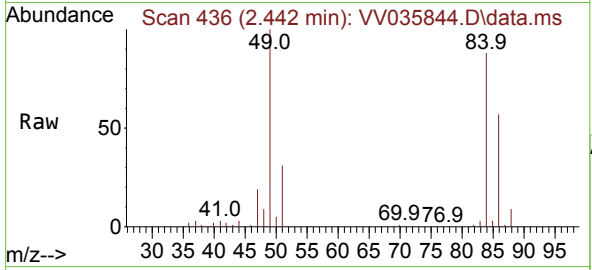
Quant Time: May 29 02:27:06 2024
 Quant Method : Z:\voasrv\HPCHEM1\MSVOA_V\Method\SFAMVLM050624SMA.M
 Quant Title : VOC Analysis
 QLast Update : Wed May 29 02:22:14 2024
 Response via : Initial Calibration





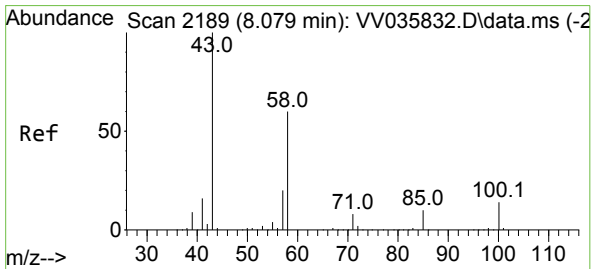
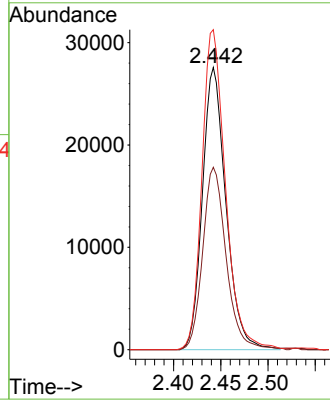
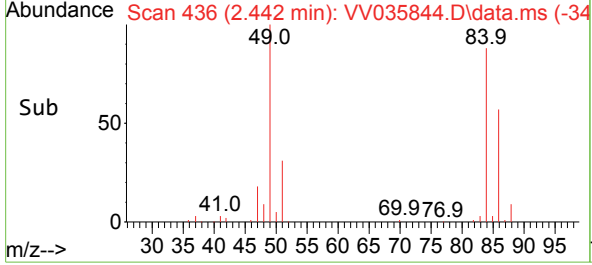
#16
 Methylene chloride
 Concen: 2.817 ug/L
 RT: 2.442 min Scan# 41
 Delta R.T. -0.000 min
 Lab File: VV035844.D
 Acq: 28 May 2024 14:26

Instrument : MSVOA_V
 ClientSampleId :

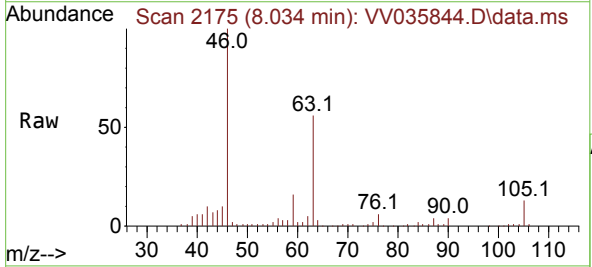


Tgt Ion: 84 Resp: 47775

Ion	Ratio	Lower	Upper
84	100		
86	64.7	43.8	81.3
49	113.4	75.3	139.9



#48
 2-Hexanone
 Concen: 0.875 ug/L
 RT: 8.034 min Scan# 2175
 Delta R.T. -0.045 min
 Lab File: VV035844.D
 Acq: 28 May 2024 14:26



Tgt Ion: 43 Resp: 4716

Ion	Ratio	Lower	Upper
43	100		
58	38.3	48.8	73.2#
57	46.9	16.9	25.3#
100	3.6	11.7	17.5#

