

Data Path : Z:\voasrv\HPCHEM1\MSVOA_V\Data\VV052824\
 Data File : VV035843.D
 Acq On : 28 May 2024 14:03
 Operator : SY/MD
 Sample : P2586-10
 Misc : 4.61g/10.0mL/MSVOA_V/SOIL/B
 ALS Vial : 14 Sample Multiplier: 1

Instrument :
 MSVOA_V
 ClientSampleId :
 A4D21

Integration Parameters: LSCINT.P

Integrator: RTE
 Smoothing : OFF Filtering: 5
 Sampling : 1 Min Area: 0 % of largest Peak
 Start Thrs: 0.2 Max Peaks: 100
 Stop Thrs : 0 Peak Location: TOP

If leading or trailing edge < 100 prefer < Baseline drop else tangent >
 Peak separation: 5

Method : Z:\voasrv\HPCHEM1\MSVOA_V\Method\SFAMVLM050624SMA.M
 Title : VOC Analysis

Signal : TIC: VV035843.D\data.ms

peak #	R.T. min	first scan	max scan	last scan	PK TY	peak height	corr. area	corr. % max.	% of total
1	1.275	66	73	89	rVB	255058	271515	17.36%	2.453%
2	1.529	145	152	167	rVB	213324	245654	15.71%	2.219%
3	2.053	305	315	329	rBV	418349	601632	38.47%	5.435%
4	2.442	425	436	464	rVB	87843	153508	9.82%	1.387%
5	2.564	473	474	479	rVB2	600	381	0.02%	0.003%
6	2.597	481	484	488	rBV3	545	393	0.03%	0.004%
7	2.616	488	490	494	rVB3	514	318	0.02%	0.003%
8	2.638	494	497	499	rBV	434	282	0.02%	0.003%
9	2.658	500	503	506	rVB3	494	312	0.02%	0.003%
10	2.687	506	512	513	rBV3	477	392	0.03%	0.004%
11	2.706	513	518	520	rBV4	513	460	0.03%	0.004%
12	2.963	584	598	616	rBV	14699	31577	2.02%	0.285%
13	3.134	648	651	653	rBV	490	241	0.02%	0.002%
14	3.317	703	708	711	rBV2	587	560	0.04%	0.005%
15	3.436	741	745	750	rVV3	295	281	0.02%	0.003%
16	3.465	750	754	756	rVV2	347	258	0.02%	0.002%
17	3.481	757	759	762	rVV	427	233	0.01%	0.002%
18	3.497	762	764	769	rVB2	293	226	0.01%	0.002%
19	3.812	857	862	865	rBV	356	329	0.02%	0.003%
20	3.854	865	875	881	rBV2	14270	31573	2.02%	0.285%
21	4.246	981	997	1035	rBV	266225	706117	45.15%	6.379%
22	4.593	1101	1105	1111	rVB5	623	628	0.04%	0.006%
23	4.889	1193	1197	1199	rBV3	294	228	0.01%	0.002%
24	4.953	1202	1217	1263	rBV2	610248	1563958	100.00%	14.128%
25	5.317	1326	1330	1333	rBV3	718	554	0.04%	0.005%
26	5.532	1385	1397	1439	rBV	685691	1452550	92.88%	13.122%
27	5.831	1478	1490	1511	rVB3	18113	42415	2.71%	0.383%
28	5.986	1526	1538	1567	rBV	352880	760044	48.60%	6.866%
29	6.252	1619	1621	1629	rVB5	943	1033	0.07%	0.009%
30	6.297	1629	1635	1641	rBV3	668	766	0.05%	0.007%
31	6.387	1659	1663	1667	rVV2	297	340	0.02%	0.003%
32	6.452	1678	1683	1685	rVB2	512	449	0.03%	0.004%
33	6.490	1689	1695	1700	rBV2	489	502	0.03%	0.005%
34	6.539	1708	1710	1716	rVB	362	227	0.01%	0.002%
35	6.571	1716	1720	1724	rBV2	364	333	0.02%	0.003%
36	6.722	1764	1767	1771	rVV2	460	366	0.02%	0.003%

Data Path : Z:\voasrv\HPCHEM1\MSVOA_V\Data\VV052824\
 Data File : VV035843.D
 Acq On : 28 May 2024 14:03
 Operator : SY/MD
 Sample : P2586-10
 Misc : 4.61g/10.0mL/MSVOA_V/SOIL/B
 ALS Vial : 14 Sample Multiplier: 1

Instrument :
 MSVOA_V
 ClientSampleId :
 A4D21

Integration Parameters: LSCINT.P

Integrator: RTE
 Smoothing : OFF
 Sampling : 1
 Start Thrs: 0.2
 Stop Thrs : 0

Filtering: 5
 Min Area: 0 % of largest Peak
 Max Peaks: 100
 Peak Location: TOP

If leading or trailing edge < 100 prefer < Baseline drop else tangent >
 Peak separation: 5

Method : Z:\voasrv\HPCHEM1\MSVOA_V\Method\SFAMVLM050624SMA.M
 Title : VOC Analysis

37	6.915	1816	1827	1850	rBV	129587	263077	16.82%	2.377%
38	7.243	1917	1929	1963	rBV	631831	1140296	72.91%	10.301%
39	7.558	2017	2027	2053	rBV	77700	157570	10.08%	1.423%
40	7.876	2112	2126	2135	rBV4	4818	8931	0.57%	0.081%
41	7.912	2135	2137	2140	rVB2	552	353	0.02%	0.003%
42	8.037	2168	2176	2211	rBV	65956	170142	10.88%	1.537%
43	8.375	2277	2281	2283	rVV3	444	321	0.02%	0.003%
44	8.551	2332	2336	2342	rVB3	621	526	0.03%	0.005%
45	8.587	2342	2347	2349	rBV2	659	703	0.04%	0.006%
46	8.731	2389	2392	2396	rVB3	520	335	0.02%	0.003%
47	8.783	2396	2408	2436	rBV	916041	1524201	97.46%	13.769%
48	9.082	2499	2501	2503	rBV2	503	260	0.02%	0.002%
49	9.153	2520	2523	2530	rBV3	620	451	0.03%	0.004%
50	9.291	2564	2566	2570	rVB4	307	240	0.02%	0.002%
51	9.387	2593	2596	2598	rVB2	468	262	0.02%	0.002%
52	9.436	2608	2611	2615	rVB3	388	247	0.02%	0.002%
53	9.474	2620	2623	2625	rBV2	573	345	0.02%	0.003%
54	9.612	2663	2666	2669	rVB2	426	309	0.02%	0.003%
55	9.645	2669	2676	2679	rBV2	415	420	0.03%	0.004%
56	9.744	2703	2707	2711	rBV2	386	436	0.03%	0.004%
57	9.837	2730	2736	2741	rBV7	1360	1687	0.11%	0.015%
58	9.879	2747	2749	2756	rVB3	742	702	0.04%	0.006%
59	9.998	2784	2786	2791	rVB3	407	296	0.02%	0.003%
60	10.056	2801	2804	2808	rBV2	408	323	0.02%	0.003%
61	10.153	2819	2834	2858	rBV	232480	378815	24.22%	3.422%
62	10.323	2878	2887	2897	rBV2	8369	13224	0.85%	0.119%
63	10.471	2930	2933	2936	rBV3	584	415	0.03%	0.004%
64	10.493	2939	2940	2943	rVB2	532	225	0.01%	0.002%
65	10.522	2943	2949	2952	rBV5	809	1027	0.07%	0.009%
66	10.709	3003	3007	3009	rBV2	713	488	0.03%	0.004%
67	10.757	3020	3022	3025	rBV2	460	302	0.02%	0.003%
68	10.857	3045	3053	3063	rVB8	2256	3995	0.26%	0.036%
69	10.982	3082	3092	3096	rBV4	864	1198	0.08%	0.011%
70	11.085	3110	3124	3131	rBV6	3329	6448	0.41%	0.058%
71	11.130	3131	3138	3143	rBV6	1902	2490	0.16%	0.022%
72	11.185	3144	3155	3178	rBV	539997	855606	54.71%	7.729%
73	11.516	3247	3258	3260	rBV6	4068	6603	0.42%	0.060%
74	11.558	3261	3271	3298	rVB	362555	594822	38.03%	5.373%
75	11.728	3317	3324	3332	rVB9	3457	5509	0.35%	0.050%
76	11.770	3332	3337	3338	rBV4	2194	1712	0.11%	0.015%

Data Path : Z:\voasrv\HPCHEM1\MSVOA_V\Data\VV052824\
 Data File : VV035843.D
 Acq On : 28 May 2024 14:03
 Operator : SY/MD
 Sample : P2586-10
 Misc : 4.61g/10.0mL/MSVOA_V/SOIL/B
 ALS Vial : 14 Sample Multiplier: 1

Instrument :
 MSVOA_V
 ClientSampleId :
 A4D21

Integration Parameters: LSCINT.P

Integrator: RTE
 Smoothing : OFF
 Sampling : 1
 Start Thrs: 0.2
 Stop Thrs : 0

Filtering: 5
 Min Area: 0 % of largest Peak
 Max Peaks: 100
 Peak Location: TOP

If leading or trailing edge < 100 prefer < Baseline drop else tangent >
 Peak separation: 5

Method : Z:\voasrv\HPCHEM1\MSVOA_V\Method\SFAMVLM050624SMA.M
 Title : VOC Analysis

77	11.847	3356	3361	3366	rBV4	756	946	0.06%	0.009%
78	11.866	3366	3367	3371	rVB	886	408	0.03%	0.004%
79	11.918	3381	3383	3385	rBV	544	338	0.02%	0.003%
80	11.976	3399	3401	3404	rBV4	391	258	0.02%	0.002%
81	12.130	3446	3449	3451	rBV	338	266	0.02%	0.002%
82	12.194	3460	3469	3481	rVB	6717	11400	0.73%	0.103%
83	12.300	3490	3502	3513	rBV9	6871	15551	0.99%	0.140%
84	12.532	3568	3574	3576	rBV5	1353	1346	0.09%	0.012%
85	12.619	3591	3601	3614	rBV9	4105	8293	0.53%	0.075%
86	12.760	3643	3645	3648	rVB2	609	307	0.02%	0.003%
87	12.789	3651	3654	3657	rVV2	752	538	0.03%	0.005%
88	12.825	3660	3665	3674	rVB7	2724	3810	0.24%	0.034%
89	12.992	3714	3717	3720	rVB5	686	339	0.02%	0.003%
90	13.062	3737	3739	3742	rBV2	489	294	0.02%	0.003%
91	13.104	3751	3752	3755	rVB	610	295	0.02%	0.003%
92	13.120	3755	3757	3760	rBV4	617	350	0.02%	0.003%
93	13.307	3811	3815	3818	rBV2	781	632	0.04%	0.006%
94	13.394	3836	3842	3845	rBV3	1133	1126	0.07%	0.010%
95	13.468	3858	3865	3872	rVB9	1534	2481	0.16%	0.022%
96	13.609	3907	3909	3911	rBV	644	331	0.02%	0.003%
97	13.738	3947	3949	3951	rBV2	448	231	0.01%	0.002%
98	13.844	3980	3982	3985	rVB3	1096	513	0.03%	0.005%
99	13.953	4013	4016	4017	rBV	426	263	0.02%	0.002%
100	13.982	4020	4025	4034	rVB2	2255	3402	0.22%	0.031%

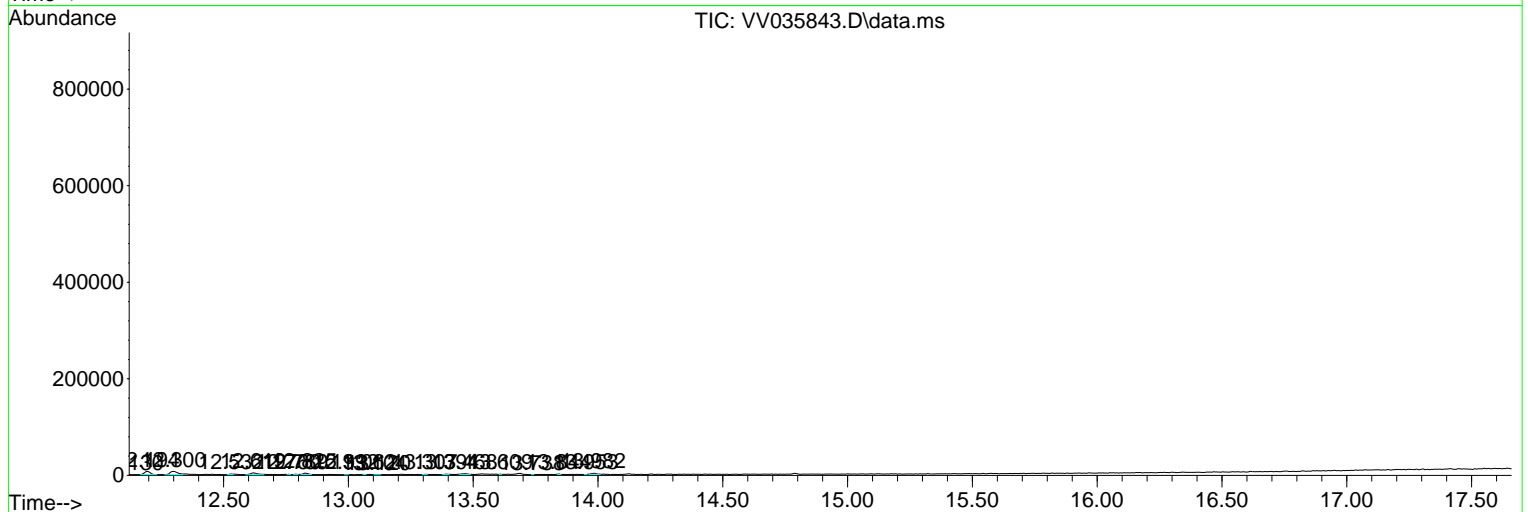
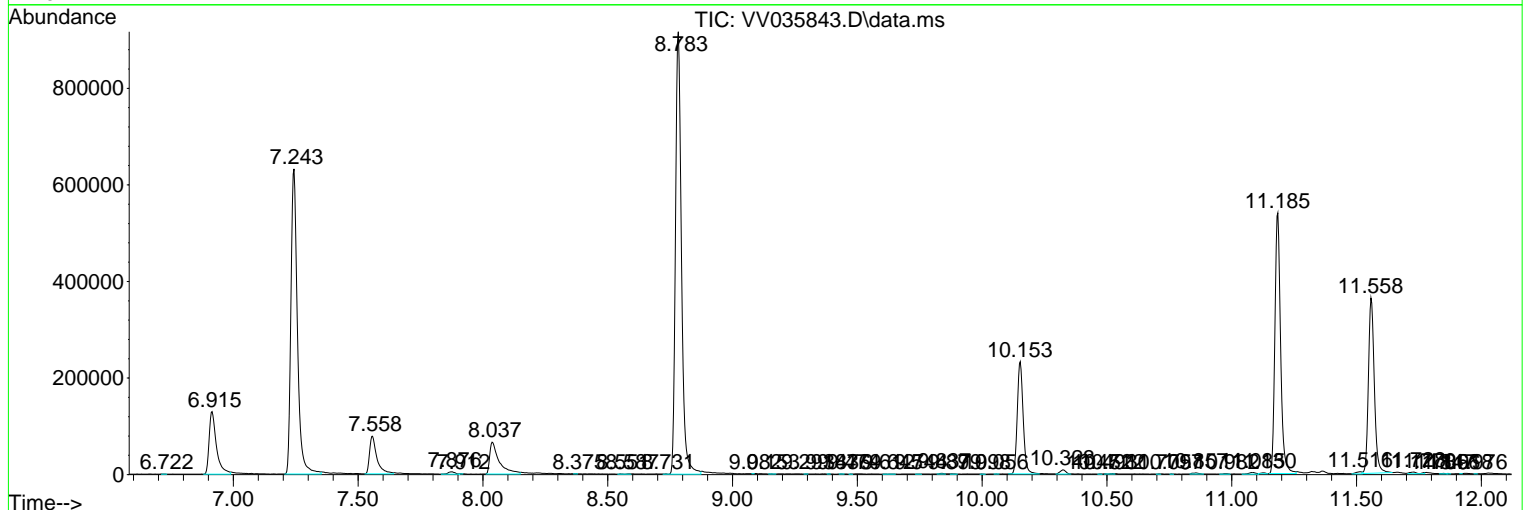
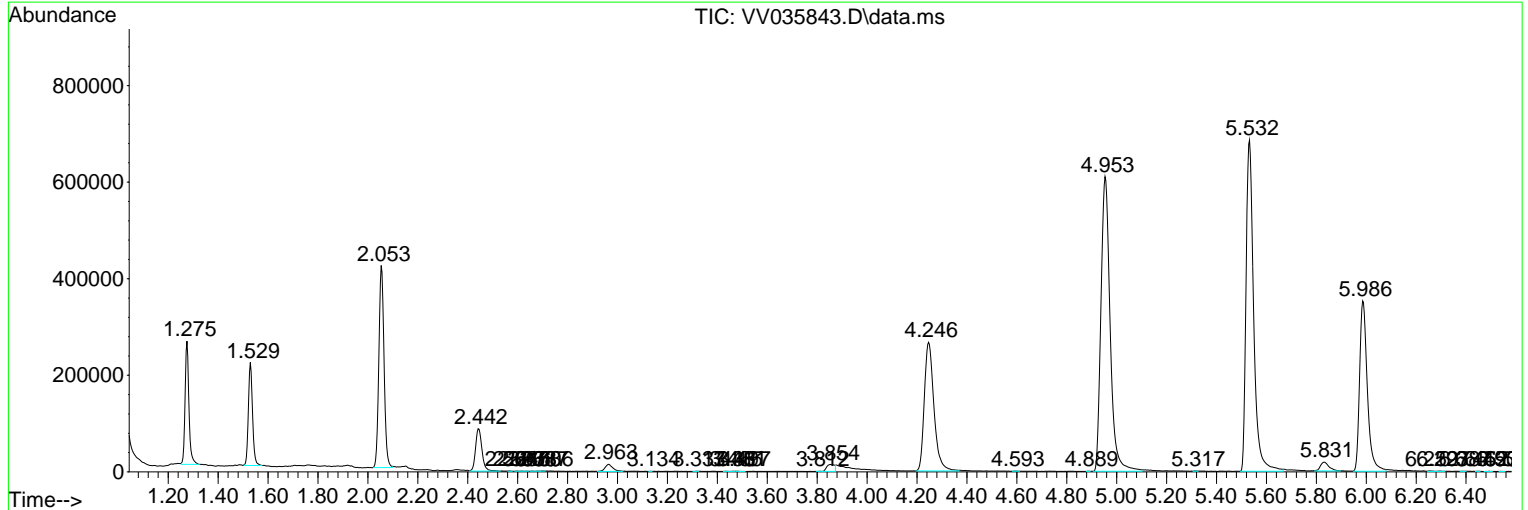
Sum of corrected areas: 11069665

Data Path : Z:\voasrv\HPCHEM1\MSVOA_V\Data\VV052824\
 Data File : VV035843.D
 Acq On : 28 May 2024 14:03
 Operator : SY/MD
 Sample : P2586-10
 Misc : 4.61g/10.0mL/MSVOA_V/SOIL/B
 ALS Vial : 14 Sample Multiplier: 1

Instrument :
 MSVOA_V
 ClientSampleId :
 A4D21

Quant Method : Z:\voasrv\HPCHEM1\MSVOA_V\Method\SFAMVLM050624SMA.M
 Quant Title : VOC Analysis

TIC Library : C:\Database\NIST20.L
 TIC Integration Parameters: LSCINT.P



Library Search Compound Report

Data Path : Z:\voasrv\HPCHEM1\MSVOA_V\Data\VV052824\
Data File : VV035843.D
Acq On : 28 May 2024 14:03
Operator : SY/MD
Sample : P2586-10
Misc : 4.61g/10.0mL/MSVOA_V/SOIL/B
ALS Vial : 14 Sample Multiplier: 1

Instrument :
MSVOA_V
ClientSampleId :
A4D21

Quant Method : Z:\voasrv\HPCHEM1\MSVOA_V\Method\SFAMVLM050624SMA.M
Quant Title : VOC Analysis

TIC Library : C:\Database\NIST20.L
TIC Integration Parameters: LSCINT.P

No Library Search Compounds Detected

Data Path : Z:\voasrv\HPCHEM1\MSVOA_V\Data\VV052824\
Data File : VV035843.D
Acq On : 28 May 2024 14:03
Operator : SY/MD
Sample : P2586-10
Misc : 4.61g/10.0mL/MSVOA_V/SOIL/B
ALS Vial : 14 Sample Multiplier: 1

Instrument :
MSVOA_V
ClientSampleId :
A4D21

Quant Method : Z:\voasrv\HPCHEM1\MSVOA_V\Method\SFAMVLM050624SMA.M
Quant Title : VOC Analysis

TIC Library : C:\Database\NIST0.L
TIC Integration Parameters: LSCINT.P

TIC Top Hit name	RT	EstConc	Units	Response	#	RT	Resp	Conc
------------------	----	---------	-------	----------	---	----	------	------
