

Data Path : Z:\voasrv\HPCHEM1\MSVOA\_V\Data\VW052924\  
 Data File : VW035858.D  
 Acq On : 29 May 2024 12:54  
 Operator : SY/MD  
 Sample : VSTDCCC025  
 Misc : 5.00g/10.0mL/MSVOA\_V/SOIL  
 ALS Vial : 2 Sample Multiplier: 1

Instrument :  
 MSVOA\_V  
 ClientSampleId :

Quant Time: May 30 00:57:28 2024  
 Quant Method : Z:\voasrv\HPCHEM1\MSVOA\_V\Method\SFAMVLM050624SMA.M  
 Quant Title : VOC Analysis  
 QLast Update : Wed May 29 02:22:14 2024  
 Response via : Initial Calibration

Compound	R.T.	QIon	Response	Conc	Units	Dev(Min)
Internal Standards						
1) 1,4-Difluorobenzene	5.529	114	505929	25.000	ug/L	0.00
28) Chlorobenzene-d5	8.783	117	496285	25.000	ug/L	0.00
58) 1,4-Dichlorobenzene-d4	11.181	152	268101	25.000	ug/L	0.00
System Monitoring Compounds						
4) Vinyl Chloride-d3	1.275	65	215918	27.612	ug/L	0.00
Spiked Amount	25.000	Range 30 - 150	Recovery	=	110.440%	
7) Chloroethane-d5	1.529	69	172911	27.409	ug/L	0.00
Spiked Amount	25.000	Range 30 - 150	Recovery	=	109.640%	
11) 1,1-Dichloroethene-d2	2.056	65	92087	26.600	ug/L	0.00
Spiked Amount	25.000	Range 45 - 110	Recovery	=	106.400%	
21) 2-Butanone-d5	3.841	46	47456	21.385	ug/L	-0.02
Spiked Amount	50.000	Range 20 - 135	Recovery	=	42.760%	
24) Chloroform-d	4.243	84	397905	26.455	ug/L	0.00
Spiked Amount	25.000	Range 40 - 150	Recovery	=	105.800%	
26) 1,2-Dichloroethane-d4	4.937	65	203339	27.346	ug/L	0.00
Spiked Amount	25.000	Range 70 - 130	Recovery	=	109.400%	
32) Benzene-d6	4.953	84	776547	28.585	ug/L	0.00
Spiked Amount	25.000	Range 20 - 135	Recovery	=	114.320%	
36) 1,2-Dichloropropane-d6	5.986	67	242532	28.929	ug/L	0.00
Spiked Amount	25.000	Range 70 - 120	Recovery	=	115.720%	
41) Toluene-d8	7.239	98	715859	29.608	ug/L	0.00
Spiked Amount	25.000	Range 30 - 130	Recovery	=	118.440%	
43) trans-1,3-Dichloroprop...	7.551	79	100783	28.108	ug/L	0.00
Spiked Amount	25.000	Range 30 - 135	Recovery	=	112.440%	
47) 2-Hexanone-d5	8.030	63	71401	47.363	ug/L	0.00
Spiked Amount	50.000	Range 20 - 135	Recovery	=	94.720%	
56) 1,1,2,2-Tetrachloroeth...	10.149	84	152360	18.860	ug/L	0.00
Spiked Amount	25.000	Range 45 - 120	Recovery	=	75.440%	
66) 1,2-Dichlorobenzene-d4	11.558	152	254097	27.310	ug/L	0.00
Spiked Amount	25.000	Range 75 - 120	Recovery	=	109.240%	
Target Compounds						
2) Dichlorodifluoromethane	1.105	85	196655	19.119	ug/L	99
3) Chloromethane	1.214	50	192030	18.595	ug/L	98
5) Vinyl chloride	1.282	62	218943	20.521	ug/L	100
6) Bromomethane	1.487	94	132596	19.628	ug/L	99
8) Chloroethane	1.548	64	143825	21.868	ug/L	98
9) Trichlorofluoromethane	1.712	101	319843	22.967	ug/L	100
10) 1,1,2-Trichloro-1,2,2-...	2.063	101	217573	24.762	ug/L	97
12) 1,1-Dichloroethene	2.066	96	179605	22.631	ug/L	85
13) Acetone	2.163	43	124543	38.338	ug/L	99
14) Carbon disulfide	2.236	76	412690	16.417	ug/L	100
15) Methyl Acetate	2.388	43	94168	19.133	ug/L	93
16) Methylene chloride	2.442	84	260782	22.353	ug/L	93
17) trans-1,2-Dichloroethene	2.690	96	195072	22.141	ug/L	98
18) Methyl tert-butyl Ether	2.703	73	543527	25.574	ug/L	98
19) 1,1-Dichloroethane	3.108	63	426305	25.809	ug/L	98
20) cis-1,2-Dichloroethene	3.809	96	229315	24.009	ug/L	93
22) 2-Butanone	3.908	43	121390	40.238	ug/L	77
23) Bromochloromethane	4.143	128	106749	23.108	ug/L	92
25) Chloroform	4.272	83	450374	26.405	ug/L	99

Data Path : Z:\voasrv\HPCHEM1\MSVOA\_V\Data\VW052924\  
 Data File : VW035858.D  
 Acq On : 29 May 2024 12:54  
 Operator : SY/MD  
 Sample : VSTDCCC025  
 Misc : 5.00g/10.0mL/MSVOA\_V/SOIL  
 ALS Vial : 2 Sample Multiplier: 1

Instrument :  
 MSVOA\_V  
 ClientSampleId :

Quant Time: May 30 00:57:28 2024  
 Quant Method : Z:\voasrv\HPCHEM1\MSVOA\_V\Method\SFAMVLM050624SMA.M  
 Quant Title : VOC Analysis  
 QLast Update : Wed May 29 02:22:14 2024  
 Response via : Initial Calibration

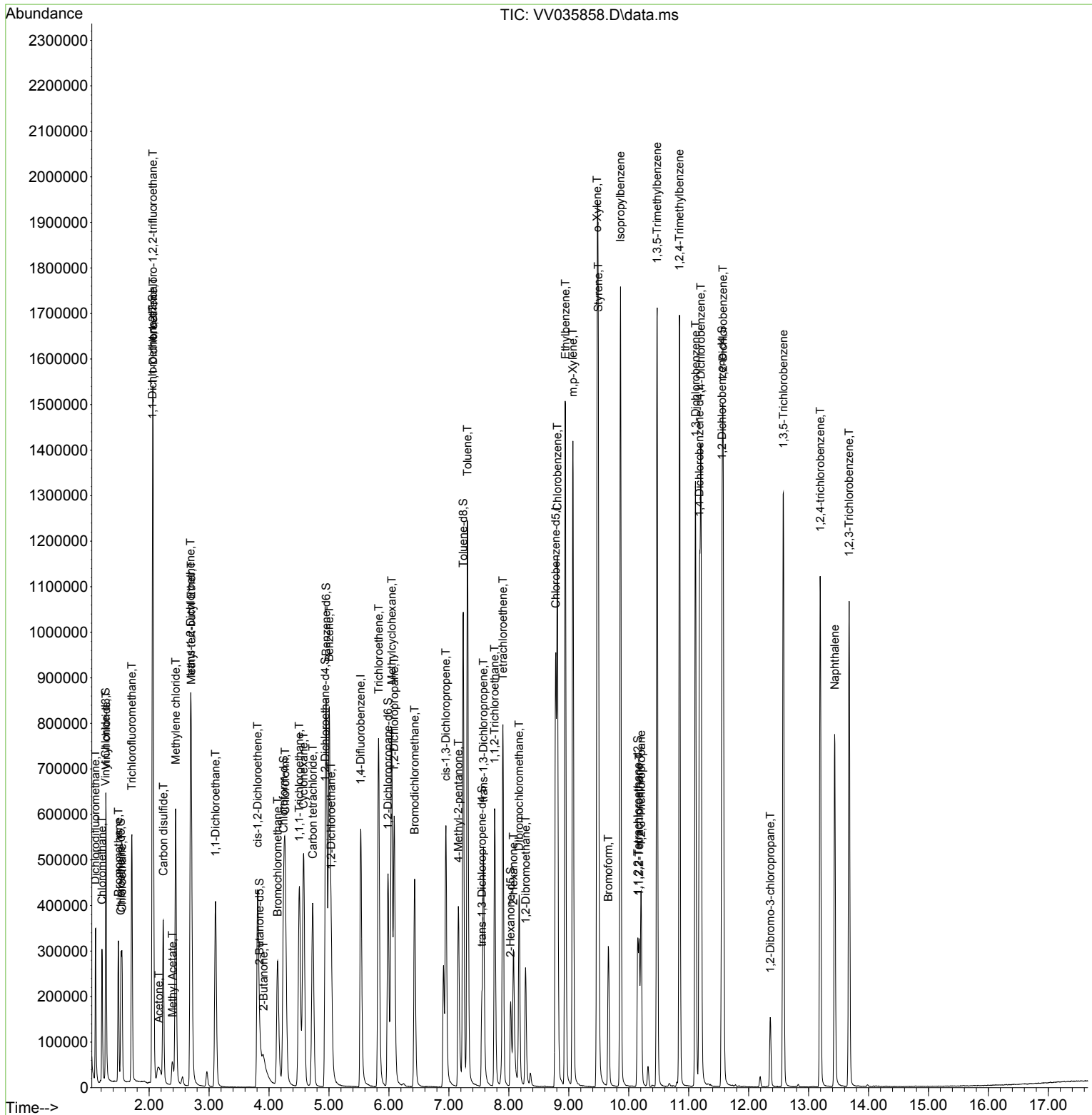
Compound	R.T.	QIon	Response	Conc	Units	Dev(Min)
27) 1,2-Dichloroethane	5.037	62	265474	24.995	ug/L	99
29) Cyclohexane	4.577	56	284596	23.980	ug/L	97
30) 1,1,1-Trichloroethane	4.507	97	371149	26.972	ug/L	98
31) Carbon tetrachloride	4.728	117	315906	26.165	ug/L	99
33) Benzene	5.005	78	862242	26.251	ug/L	100
34) Trichloroethene	5.828	95	273023	29.386	ug/L	98
35) Methylcyclohexane	6.047	83	336811	23.878	ug/L	97
37) 1,2-Dichloropropane	6.088	63	244671	28.551	ug/L	98
38) Bromodichloromethane	6.429	83	322104	27.746	ug/L	99
39) cis-1,3-Dichloropropene	6.950	75	364554	27.198	ug/L	100
40) 4-Methyl-2-pentanone	7.159	43	287898	56.096	ug/L	96
42) Toluene	7.310	91	932643	26.831	ug/L	100
44) trans-1,3-Dichloropropene	7.577	75	321776	27.443	ug/L	98
45) 1,1,2-Trichloroethane	7.764	97	196430	26.977	ug/L	98
46) Tetrachloroethene	7.902	164	180142	23.866	ug/L	98
48) 2-Hexanone	8.079	43	205784	53.477	ug/L	99
49) Dibromochloromethane	8.172	129	218184	26.556	ug/L	99
50) 1,2-Dibromoethane	8.281	107	180911	25.220	ug/L	99
51) Chlorobenzene	8.809	112	623401	25.847	ug/L	99
52) Ethylbenzene	8.944	91	1051187	27.390	ug/L	99
53) m,p-Xylene	9.069	106	392173	26.934	ug/L	100
54) o-Xylene	9.474	106	380688	27.586	ug/L	98
55) Styrene	9.493	104	690125	28.672	ug/L	97
57) 1,1,2,2-Tetrachloroethane	10.175	83	158223	17.839	ug/L	99
59) Bromoform	9.661	173	138974	26.377	ug/L	99
60) Isopropylbenzene	9.863	105	1082439	30.309	ug/L	99
61) 1,2,3-Trichloropropane	10.207	75	178592	28.427	ug/L	99
62) 1,3,5-Trimethylbenzene	10.474	105	868801	31.011	ug/L	100
63) 1,2,4-Trimethylbenzene	10.847	105	880412	30.581	ug/L	100
64) 1,3-Dichlorobenzene	11.114	146	533209	28.450	ug/L	100
65) 1,4-Dichlorobenzene	11.204	146	540493	27.857	ug/L	99
67) 1,2-Dichlorobenzene	11.574	146	496145	28.122	ug/L	99
68) 1,2-Dibromo-3-chloropr...	12.361	75	40022	27.468	ug/L	93
69) 1,3,5-Trichlorobenzene	12.580	180	412594	28.171	ug/L	99
70) 1,2,4-trichlorobenzene	13.194	180	347619	28.424	ug/L	98
71) Naphthalene	13.435	128	604060	28.136	ug/L	100
72) 1,2,3-Trichlorobenzene	13.677	180	319596	29.050	ug/L	100

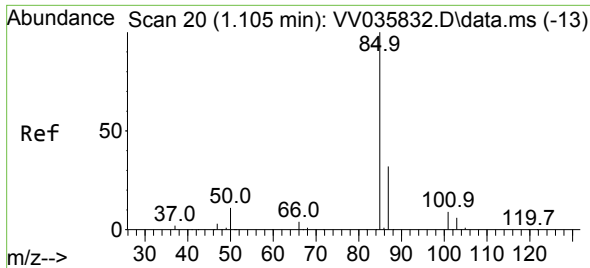
(#) = qualifier out of range (m) = manual integration (+) = signals summed

Data Path : Z:\voasrv\HPCHEM1\MSVOA\_V\Data\VV052924\  
 Data File : VV035858.D  
 Acq On : 29 May 2024 12:54  
 Operator : SY/MD  
 Sample : VSTDC025  
 Misc : 5.00g/10.0mL/MSVOA\_V/SOIL  
 ALS Vial : 2 Sample Multiplier: 1

Instrument :  
 MSVOA\_V  
 ClientSampleId :

Quant Time: May 30 00:57:28 2024  
 Quant Method : Z:\voasrv\HPCHEM1\MSVOA\_V\Method\SFAMVLM050624SMA.M  
 Quant Title : VOC Analysis  
 QLast Update : Wed May 29 02:22:14 2024  
 Response via : Initial Calibration

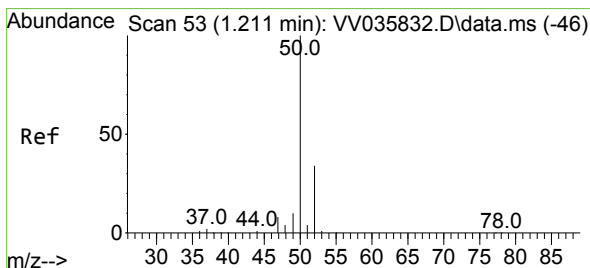
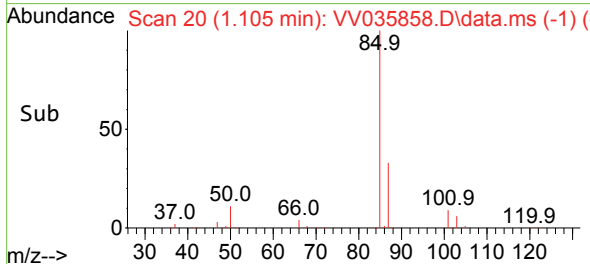
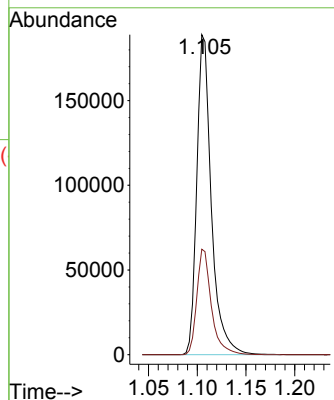
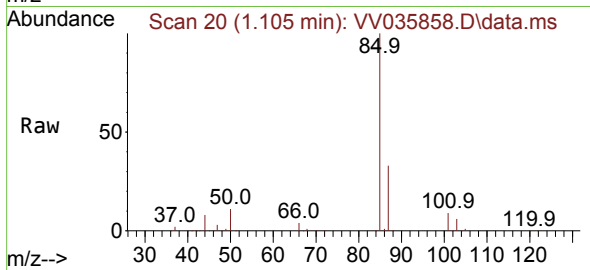




#2  
 Dichlorodifluoromethane  
 Concen: 19.119 ug/L  
 RT: 1.105 min Scan# 20  
 Delta R.T. 0.000 min  
 Lab File: VV035858.D  
 Acq: 29 May 2024 12:54

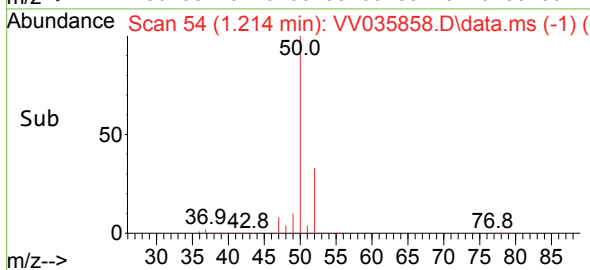
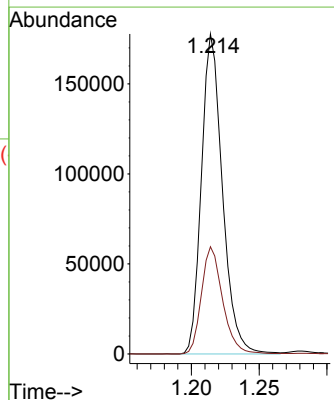
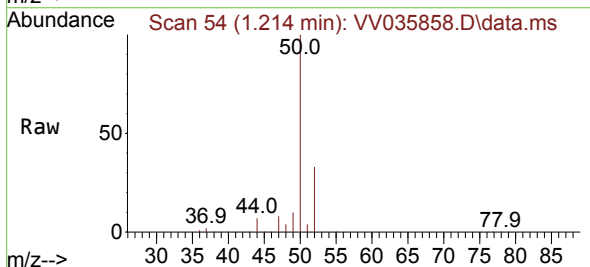
Instrument :  
 MSVOA\_V  
 ClientSampleId :

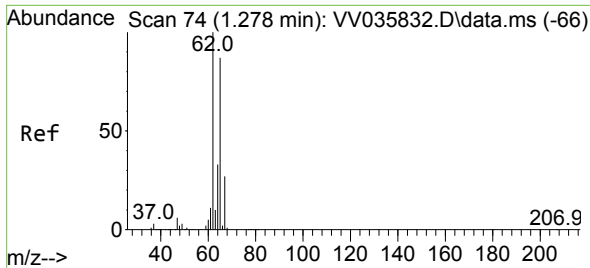
Tgt Ion: 85 Resp: 196655  
 Ion Ratio Lower Upper  
 85 100  
 87 32.9 25.8 38.6



#3  
 Chloromethane  
 Concen: 18.595 ug/L  
 RT: 1.214 min Scan# 54  
 Delta R.T. 0.003 min  
 Lab File: VV035858.D  
 Acq: 29 May 2024 12:54

Tgt Ion: 50 Resp: 192030  
 Ion Ratio Lower Upper  
 50 100  
 52 33.5 22.7 42.1

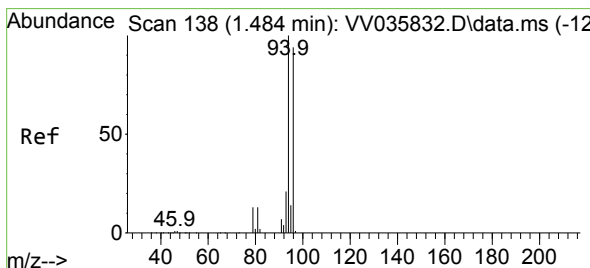
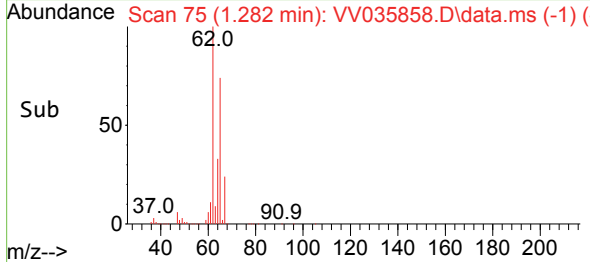
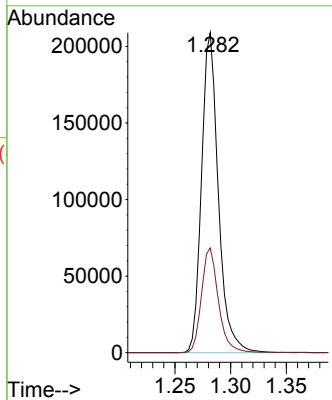
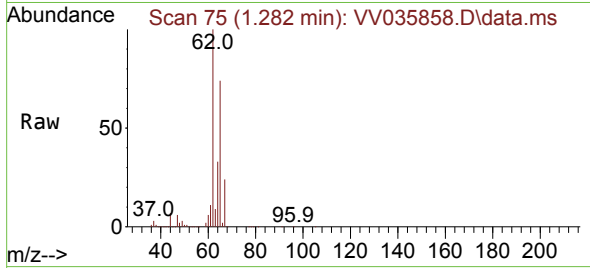




#5  
 Vinyl chloride  
 Concen: 20.521 ug/L  
 RT: 1.282 min Scan# 74  
 Delta R.T. 0.003 min  
 Lab File: VV035858.D  
 Acq: 29 May 2024 12:54

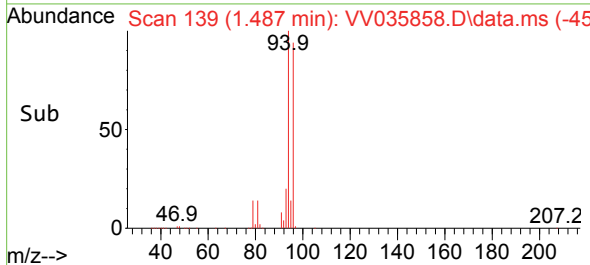
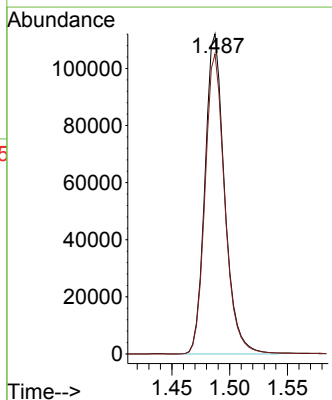
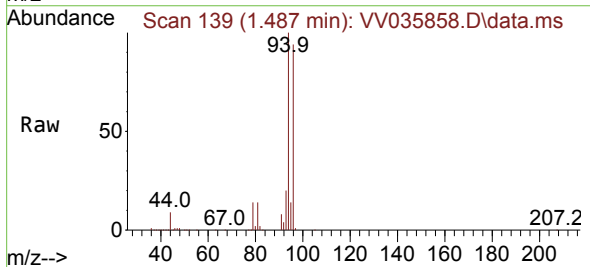
Instrument :  
 MSVOA\_V  
 ClientSampleId :

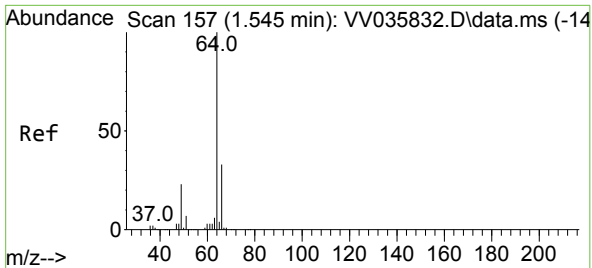
Tgt Ion: 62 Resp: 218943  
 Ion Ratio Lower Upper  
 62 100  
 64 32.8 23.0 42.6



#6  
 Bromomethane  
 Concen: 19.628 ug/L  
 RT: 1.487 min Scan# 139  
 Delta R.T. 0.003 min  
 Lab File: VV035858.D  
 Acq: 29 May 2024 12:54

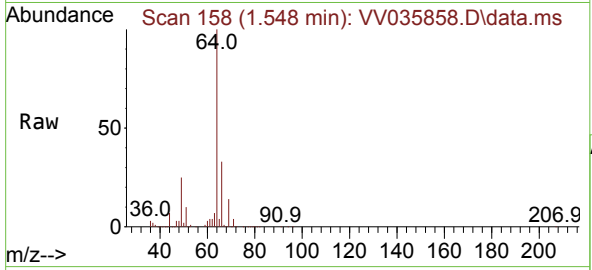
Tgt Ion: 94 Resp: 132596  
 Ion Ratio Lower Upper  
 94 100  
 96 93.7 65.2 121.0



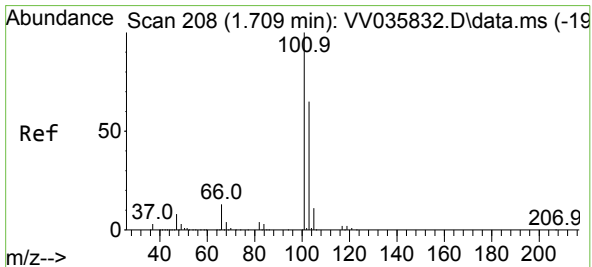
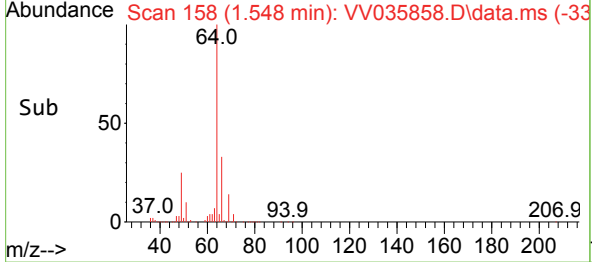
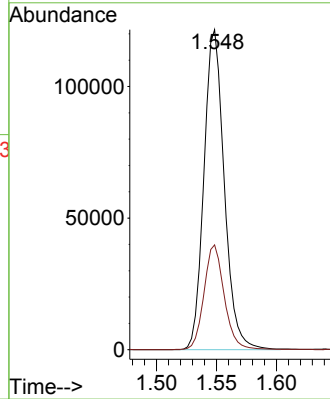


#8  
 Chloroethane  
 Concen: 21.868 ug/L  
 RT: 1.548 min Scan# 11  
 Delta R.T. 0.003 min  
 Lab File: VV035858.D  
 Acq: 29 May 2024 12:54

Instrument :  
 MSVOA\_V  
 ClientSampleId :

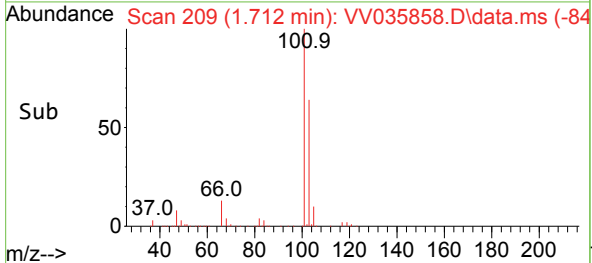
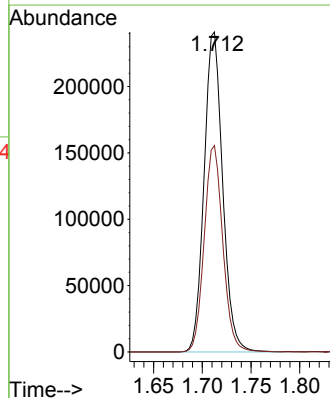
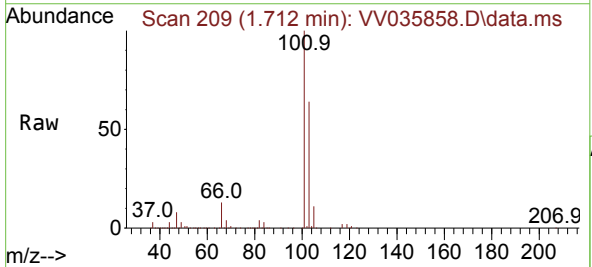


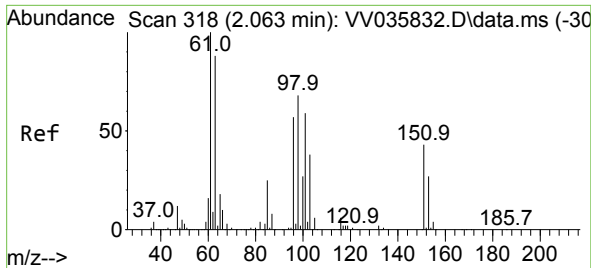
Tgt Ion: 64 Resp: 143825  
 Ion Ratio Lower Upper  
 64 100  
 66 32.8 22.0 40.8



#9  
 Trichlorofluoromethane  
 Concen: 22.967 ug/L  
 RT: 1.712 min Scan# 209  
 Delta R.T. 0.003 min  
 Lab File: VV035858.D  
 Acq: 29 May 2024 12:54

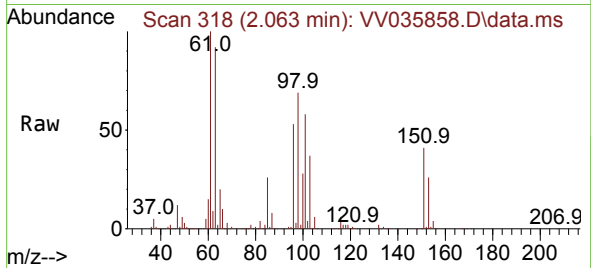
Tgt Ion: 101 Resp: 319843  
 Ion Ratio Lower Upper  
 101 100  
 103 64.6 51.5 77.3



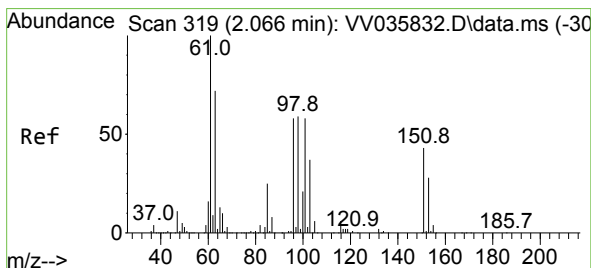
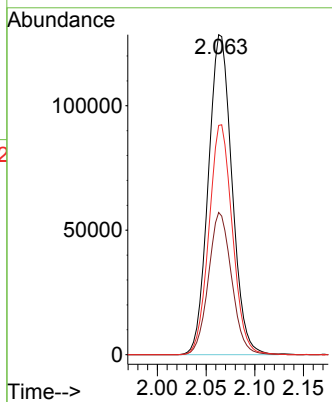
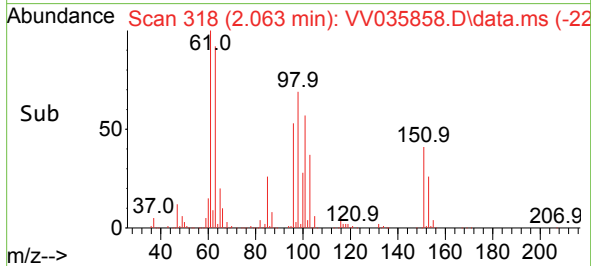


#10  
 1,1,2-Trichloro-1,2,2-trifluoroethane  
 Concen: 24.762 ug/L  
 RT: 2.063 min Scan# 318  
 Delta R.T. 0.000 min  
 Lab File: VV035858.D  
 Acq: 29 May 2024 12:54

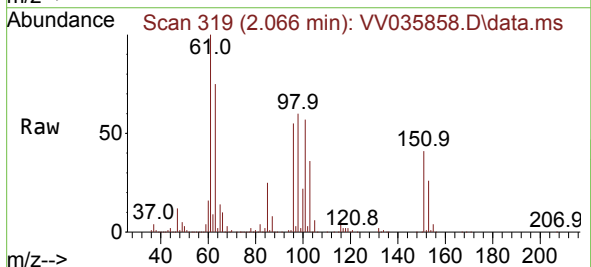
Instrument :  
 MSVOA\_V  
 ClientSampleId :



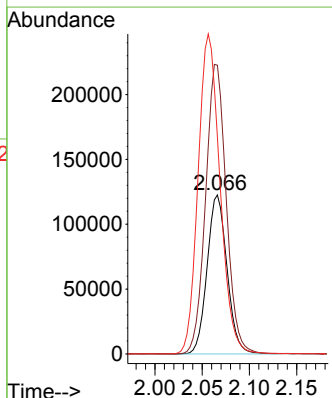
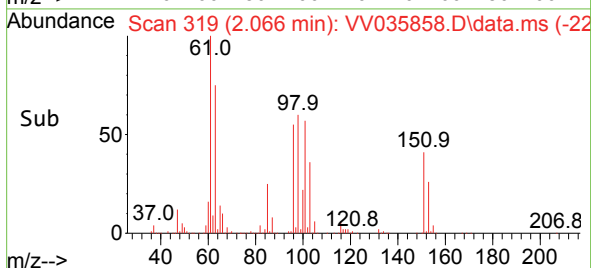
Tgt Ion:101 Resp: 217573  
 Ion Ratio Lower Upper  
 101 100  
 85 43.4 34.2 51.4  
 151 71.2 59.5 89.3

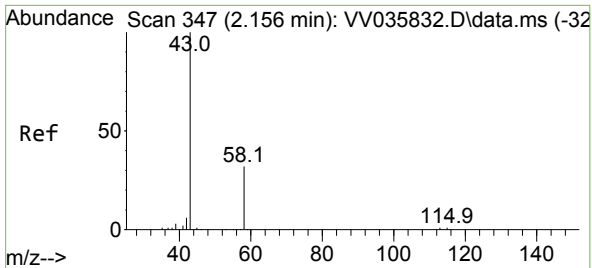


#12  
 1,1-Dichloroethene  
 Concen: 22.631 ug/L  
 RT: 2.066 min Scan# 319  
 Delta R.T. 0.000 min  
 Lab File: VV035858.D  
 Acq: 29 May 2024 12:54



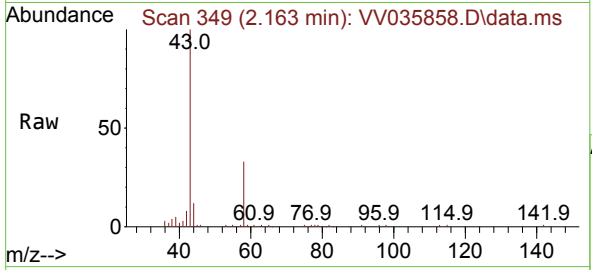
Tgt Ion: 96 Resp: 179605  
 Ion Ratio Lower Upper  
 96 100  
 61 181.7 119.8 222.4  
 63 136.3 75.6 140.4



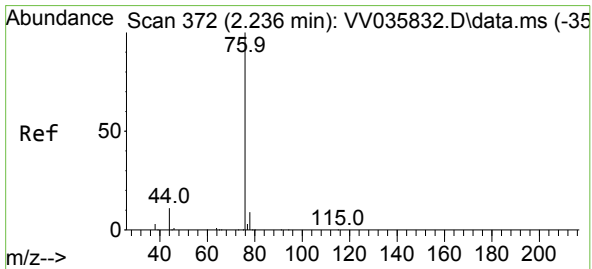
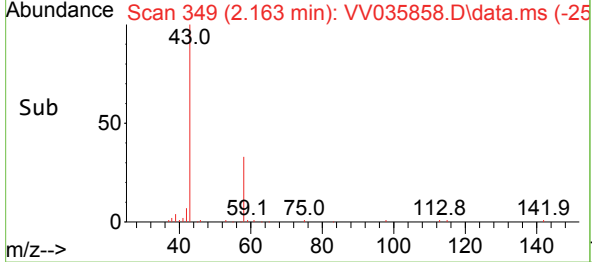
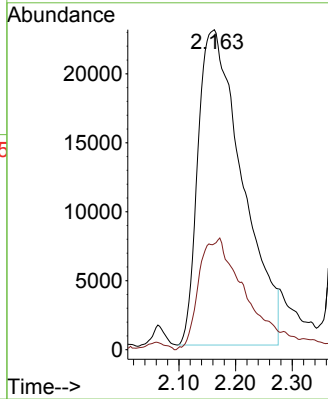


#13  
 Acetone  
 Concen: 38.338 ug/L  
 RT: 2.163 min Scan# 349  
 Delta R.T. 0.006 min  
 Lab File: VV035858.D  
 Acq: 29 May 2024 12:54

Instrument : MSVOA\_V  
 ClientSampleId :

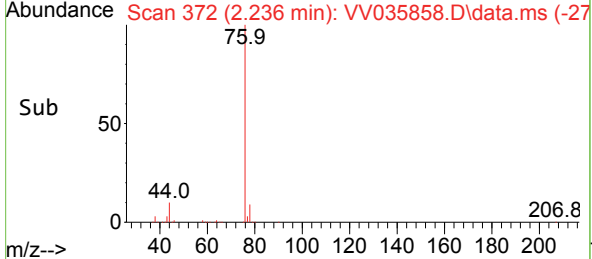
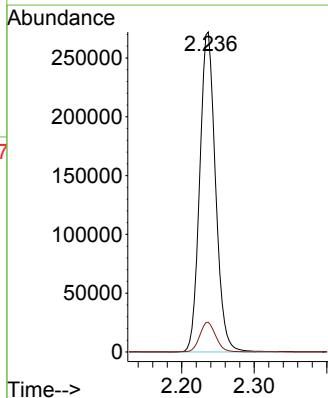
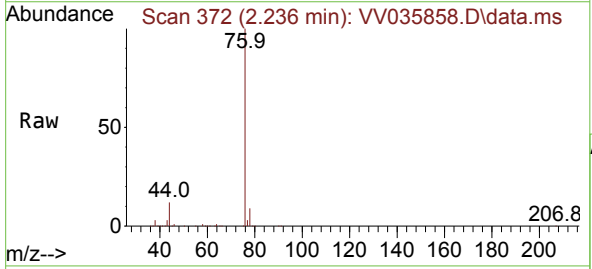


Tgt Ion: 43 Resp: 124543  
 Ion Ratio Lower Upper  
 43 100  
 58 11.6 0.0 22.8

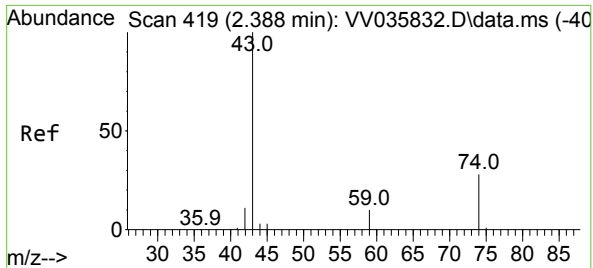


#14  
 Carbon disulfide  
 Concen: 16.417 ug/L  
 RT: 2.236 min Scan# 372  
 Delta R.T. 0.000 min  
 Lab File: VV035858.D  
 Acq: 29 May 2024 12:54

Tgt Ion: 76 Resp: 412690  
 Ion Ratio Lower Upper  
 76 100  
 78 9.3 7.5 11.3





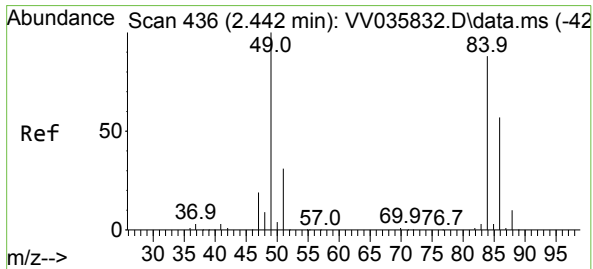
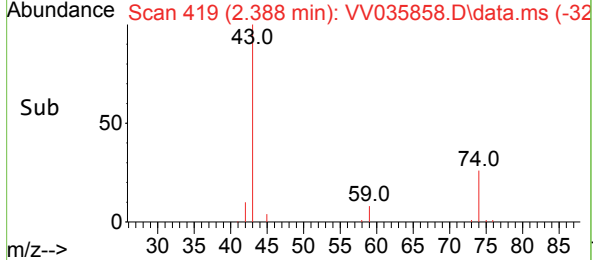
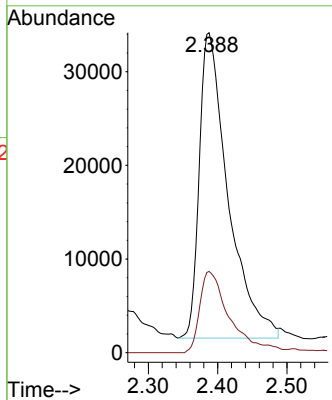
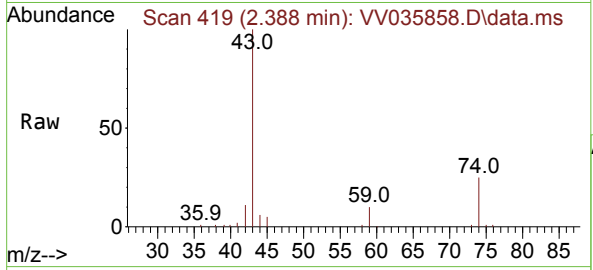


#15  
 Methyl Acetate  
 Concen: 19.133 ug/L  
 RT: 2.388 min Scan# 411  
 Delta R.T. 0.000 min  
 Lab File: VV035858.D  
 Acq: 29 May 2024 12:54

Instrument : MSVOA\_V  
 ClientSampleId :

Tgt Ion: 43 Resp: 94168

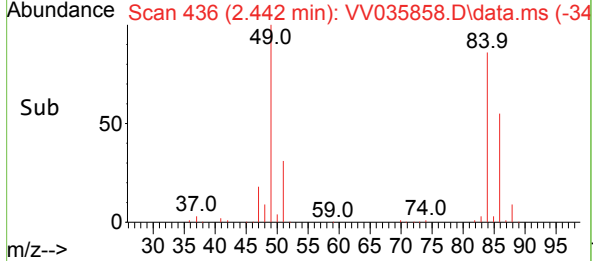
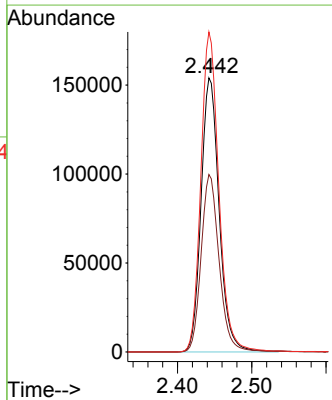
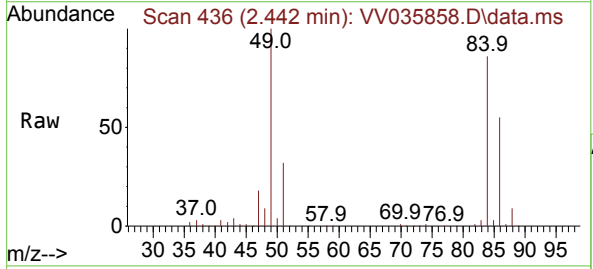
Ion	Ratio	Lower	Upper
43	100		
74	26.5	18.6	27.8

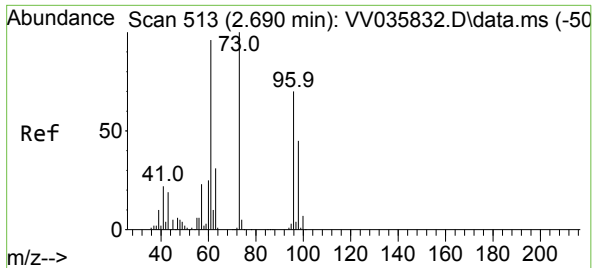


#16  
 Methylene chloride  
 Concen: 22.353 ug/L  
 RT: 2.442 min Scan# 436  
 Delta R.T. 0.000 min  
 Lab File: VV035858.D  
 Acq: 29 May 2024 12:54

Tgt Ion: 84 Resp: 260782

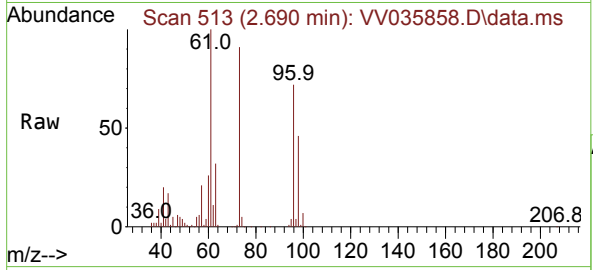
Ion	Ratio	Lower	Upper
84	100		
86	64.7	43.8	81.3
49	116.8	75.3	139.9





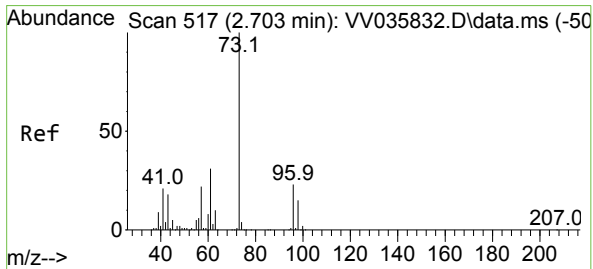
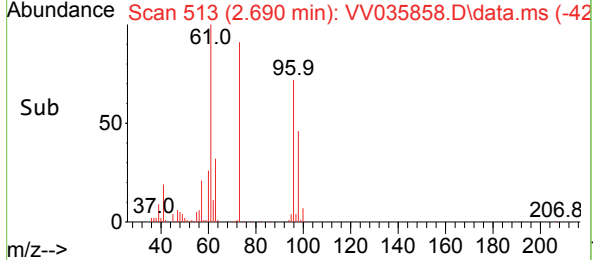
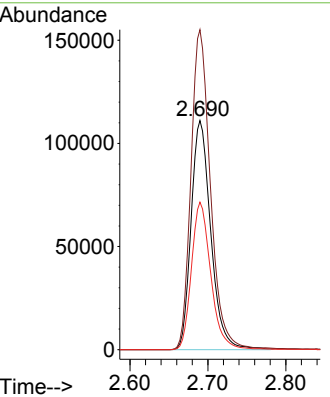
#17  
 trans-1,2-Dichloroethene  
 Concen: 22.141 ug/L  
 RT: 2.690 min Scan# 513  
 Delta R.T. 0.000 min  
 Lab File: VV035858.D  
 Acq: 29 May 2024 12:54

Instrument : MSVOA\_V  
 ClientSampleId :

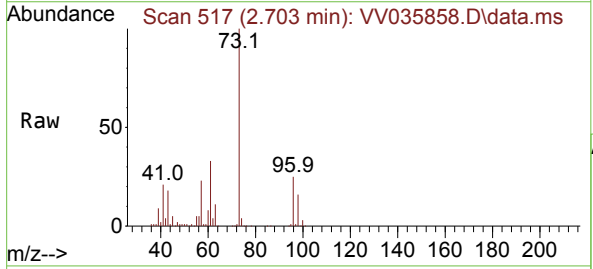


Tgt Ion: 96 Resp: 195072

Ion	Ratio	Lower	Upper
96	100		
61	139.7	95.5	177.4
98	64.4	46.0	85.4

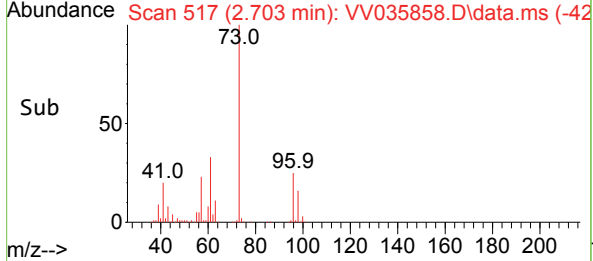
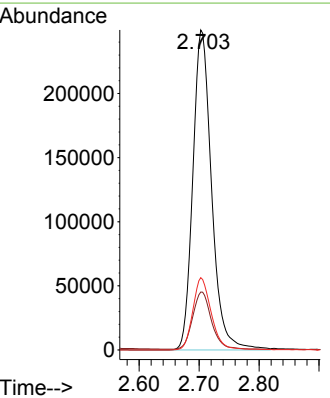


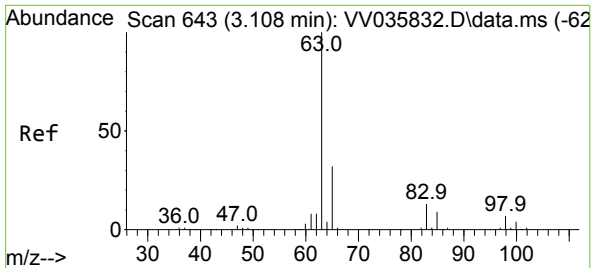
#18  
 Methyl tert-butyl Ether  
 Concen: 25.574 ug/L  
 RT: 2.703 min Scan# 517  
 Delta R.T. 0.000 min  
 Lab File: VV035858.D  
 Acq: 29 May 2024 12:54



Tgt Ion: 73 Resp: 543527

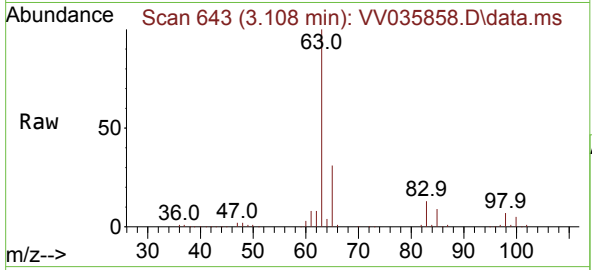
Ion	Ratio	Lower	Upper
73	100		
43	17.9	13.3	19.9
57	22.2	17.4	26.2





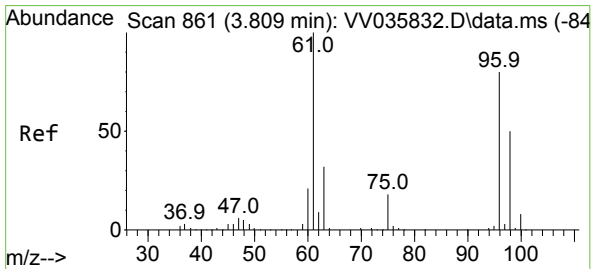
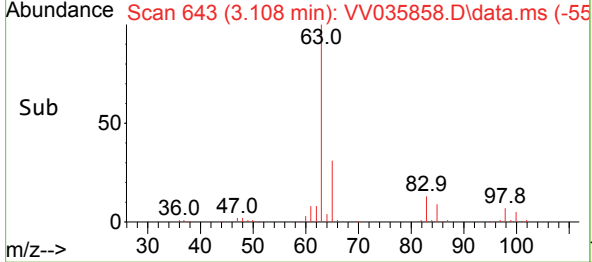
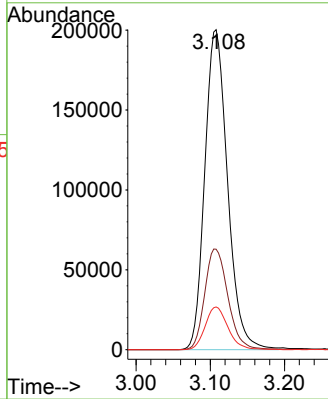
#19  
 1,1-Dichloroethane  
 Concen: 25.809 ug/L  
 RT: 3.108 min Scan# 643  
 Delta R.T. 0.000 min  
 Lab File: VV035858.D  
 Acq: 29 May 2024 12:54

Instrument : MSVOA\_V  
 ClientSampleId :

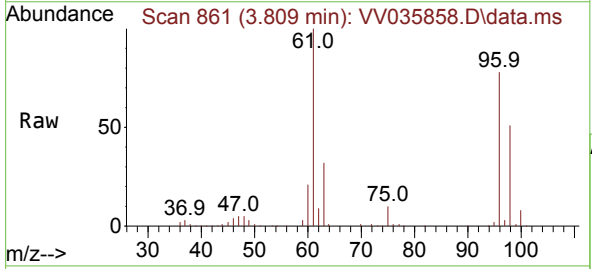


Tgt Ion: 63 Resp: 426305

Ion	Ratio	Lower	Upper
63	100		
65	31.4	22.7	42.3
83	13.4	9.7	17.9

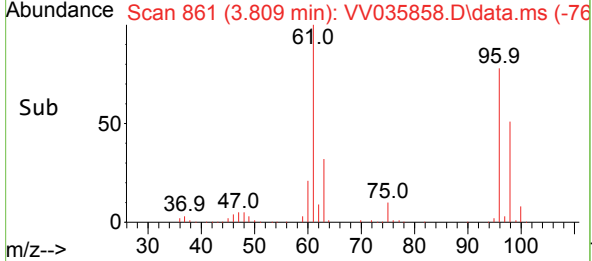
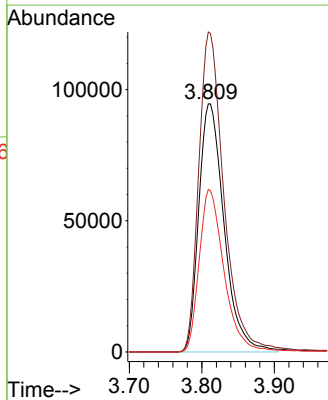


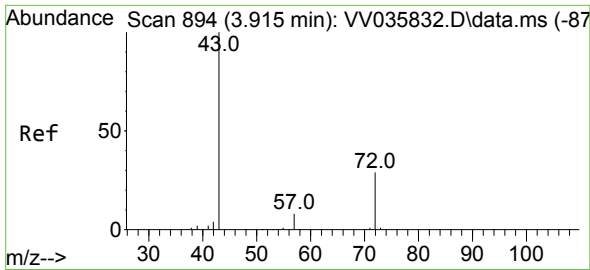
#20  
 cis-1,2-Dichloroethene  
 Concen: 24.009 ug/L  
 RT: 3.809 min Scan# 861  
 Delta R.T. 0.000 min  
 Lab File: VV035858.D  
 Acq: 29 May 2024 12:54



Tgt Ion: 96 Resp: 229315

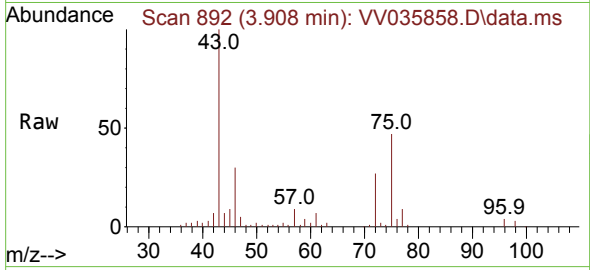
Ion	Ratio	Lower	Upper
96	100		
61	129.0	83.9	155.9
98	65.5	44.0	81.8



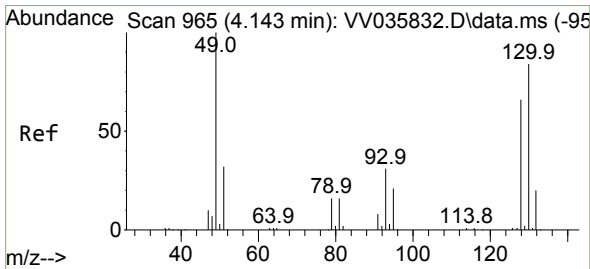
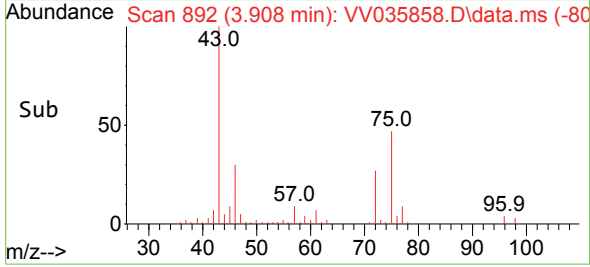
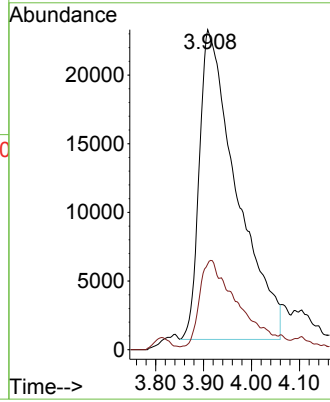


#22  
 2-Butanone  
 Concen: 40.238 ug/L  
 RT: 3.908 min Scan# 892  
 Delta R.T. -0.006 min  
 Lab File: VV035858.D  
 Acq: 29 May 2024 12:54

Instrument : MSVOA\_V  
 ClientSampleId :

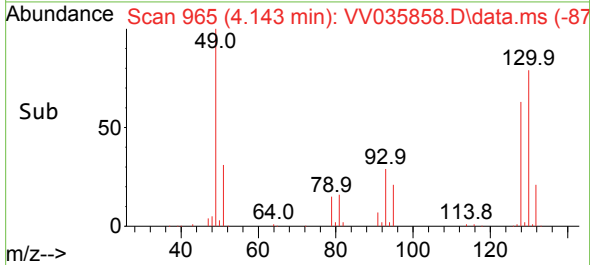
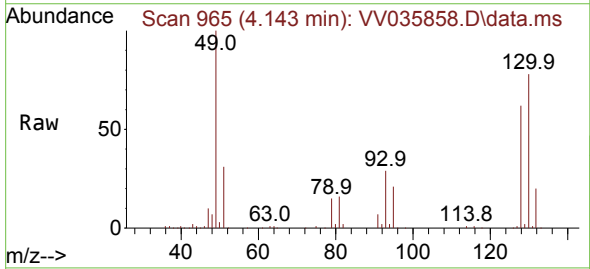
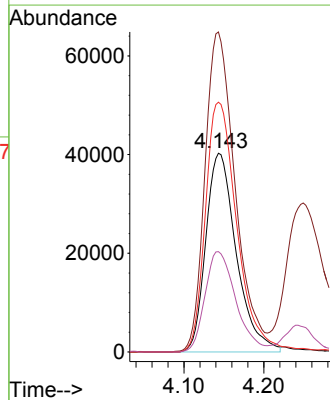


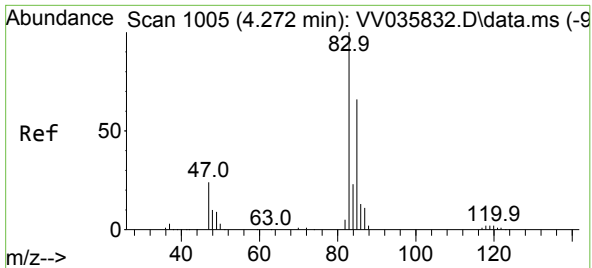
Tgt Ion: 43 Resp: 121390  
 Ion Ratio Lower Upper  
 43 100  
 72 13.1 12.3 36.9



#23  
 Bromochloromethane  
 Concen: 23.108 ug/L  
 RT: 4.143 min Scan# 965  
 Delta R.T. 0.000 min  
 Lab File: VV035858.D  
 Acq: 29 May 2024 12:54

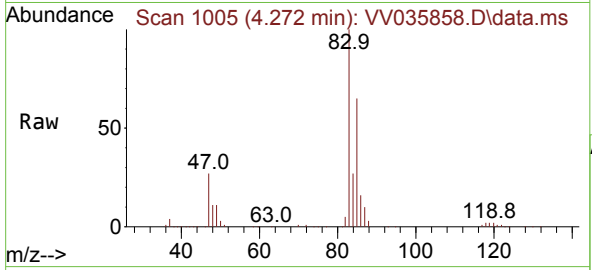
Tgt Ion:128 Resp: 106749  
 Ion Ratio Lower Upper  
 128 100  
 49 161.0 103.1 191.5  
 130 125.6 91.8 170.4  
 51 50.5 37.0 55.4



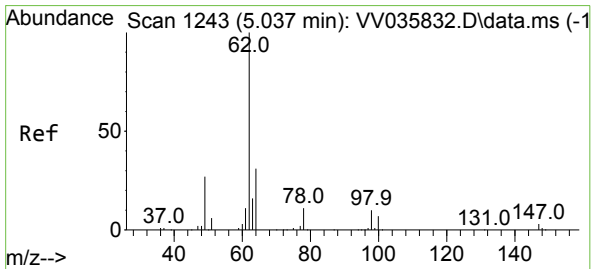
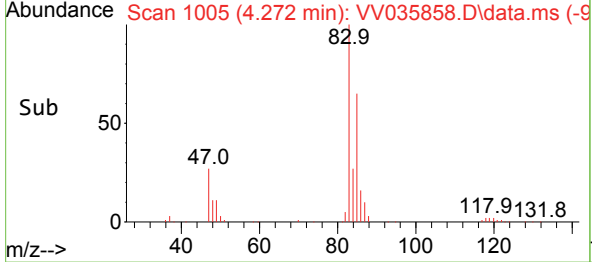
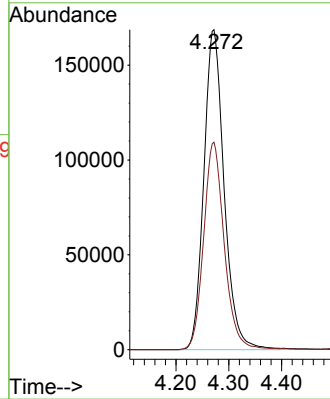


#25  
 Chloroform  
 Concen: 26.405 ug/L  
 RT: 4.272 min Scan# 1005  
 Delta R.T. 0.000 min  
 Lab File: VV035858.D  
 Acq: 29 May 2024 12:54

Instrument : MSVOA\_V  
 ClientSampleId :

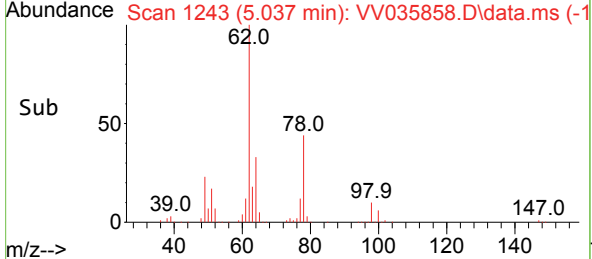
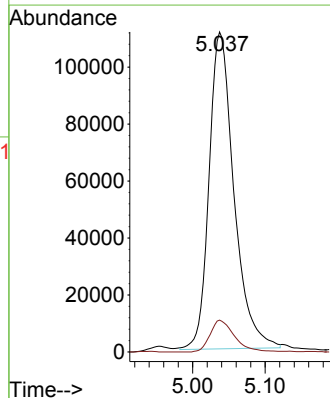
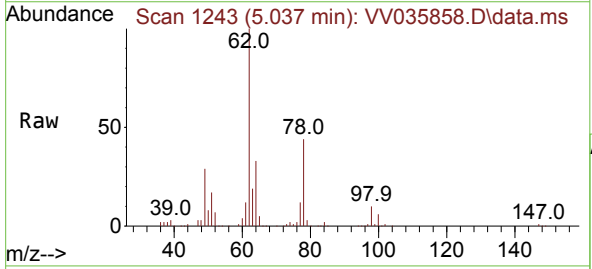


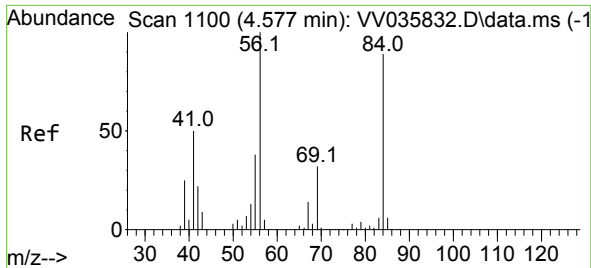
Tgt Ion: 83 Resp: 450374  
 Ion Ratio Lower Upper  
 83 100  
 85 64.8 44.7 82.9



#27  
 1,2-Dichloroethane  
 Concen: 24.995 ug/L  
 RT: 5.037 min Scan# 1243  
 Delta R.T. 0.000 min  
 Lab File: VV035858.D  
 Acq: 29 May 2024 12:54

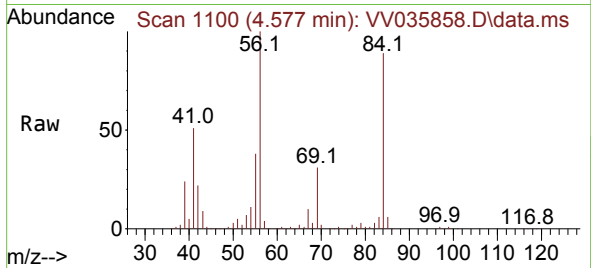
Tgt Ion: 62 Resp: 265474  
 Ion Ratio Lower Upper  
 62 100  
 98 10.0 8.2 12.2





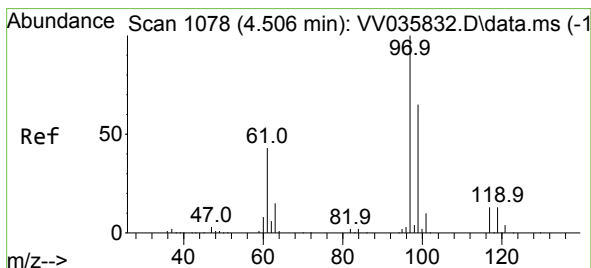
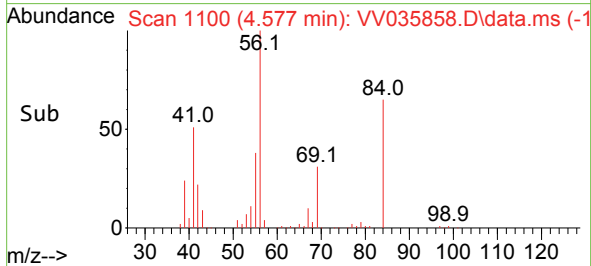
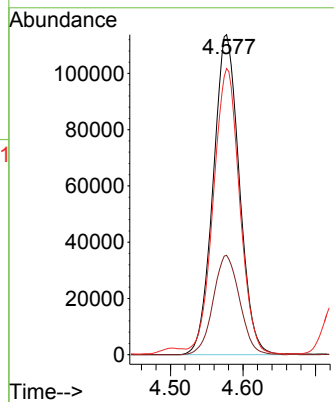
#29  
 Cyclohexane  
 Concen: 23.980 ug/L  
 RT: 4.577 min Scan# 1100  
 Delta R.T. 0.000 min  
 Lab File: VV035858.D  
 Acq: 29 May 2024 12:54

Instrument :  
 MSVOA\_V  
 ClientSampleId :



Tgt Ion: 56 Resp: 284596

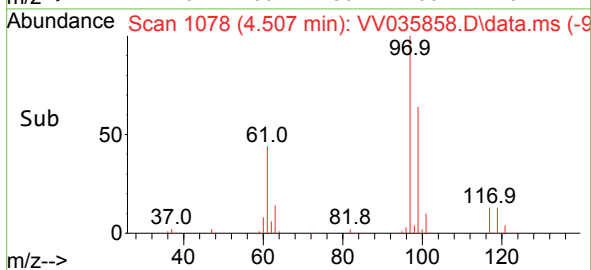
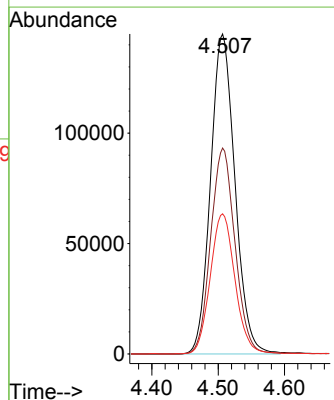
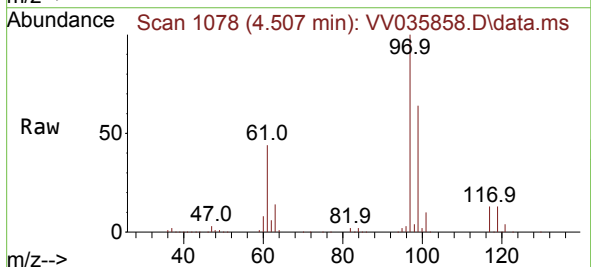
Ion	Ratio	Lower	Upper
56	100		
69	31.4	25.6	38.4
84	89.8	74.8	112.2

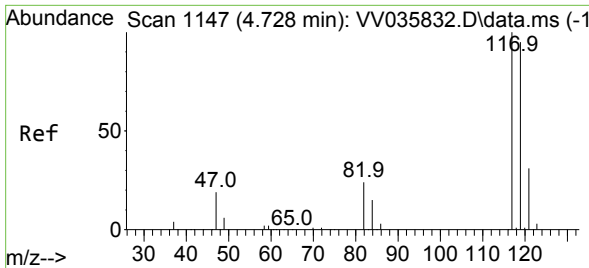


#30  
 1,1,1-Trichloroethane  
 Concen: 26.972 ug/L  
 RT: 4.507 min Scan# 1078  
 Delta R.T. 0.000 min  
 Lab File: VV035858.D  
 Acq: 29 May 2024 12:54

Tgt Ion: 97 Resp: 371149

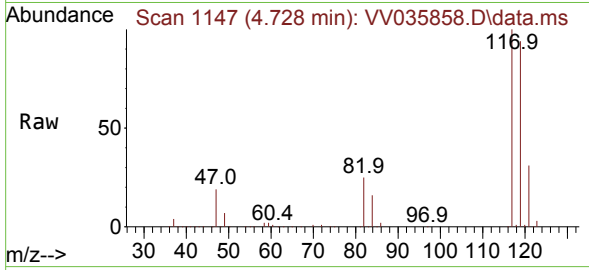
Ion	Ratio	Lower	Upper
97	100		
99	64.1	51.7	77.5
61	44.2	33.5	50.3



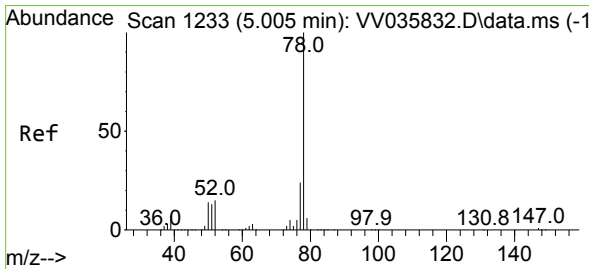
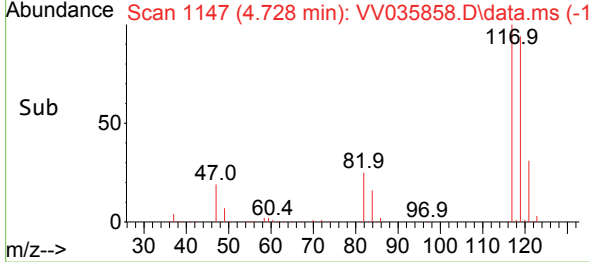
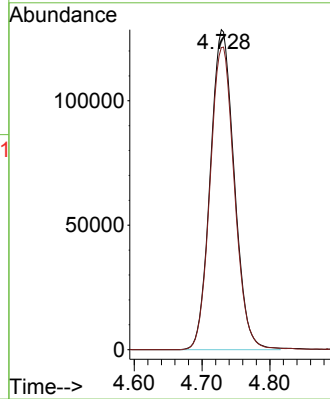


#31  
 Carbon tetrachloride  
 Concen: 26.165 ug/L  
 RT: 4.728 min Scan# 1147  
 Delta R.T. 0.000 min  
 Lab File: VV035858.D  
 Acq: 29 May 2024 12:54

Instrument : MSVOA\_V  
 ClientSampleId :

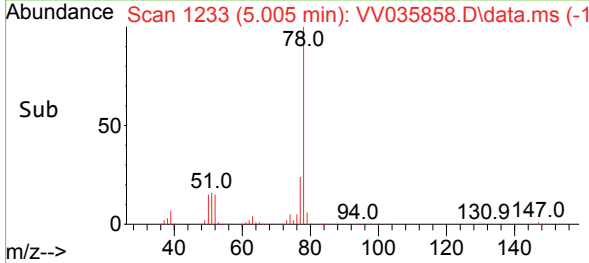
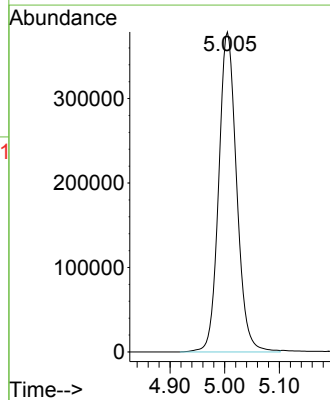
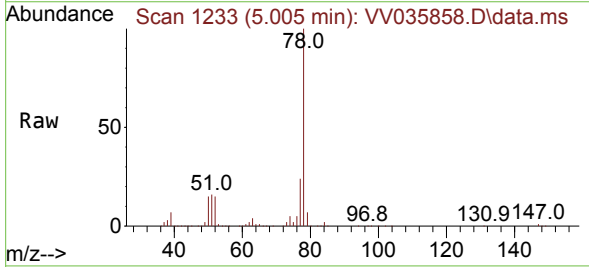


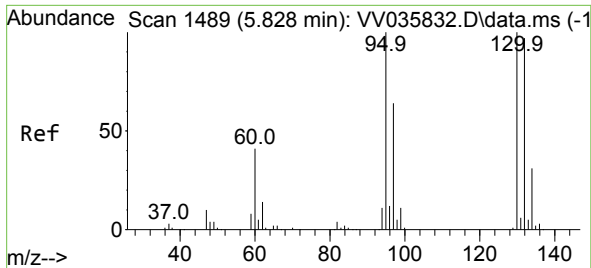
Tgt Ion:117 Resp: 315906  
 Ion Ratio Lower Upper  
 117 100  
 119 95.9 77.3 115.9



#33  
 Benzene  
 Concen: 26.251 ug/L  
 RT: 5.005 min Scan# 1233  
 Delta R.T. 0.000 min  
 Lab File: VV035858.D  
 Acq: 29 May 2024 12:54

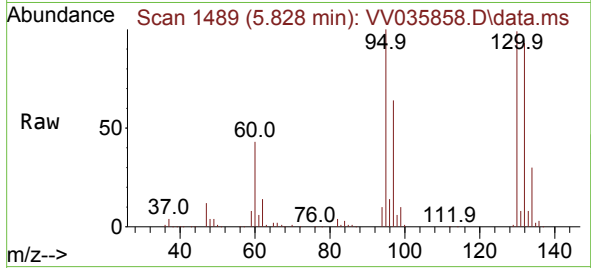
Tgt Ion: 78 Resp: 862242



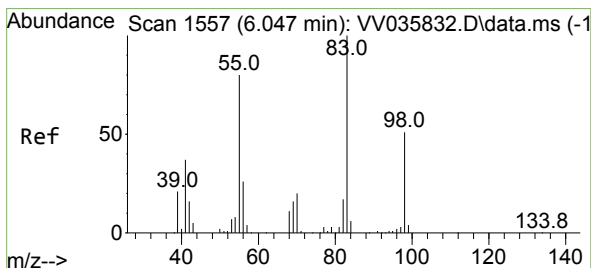
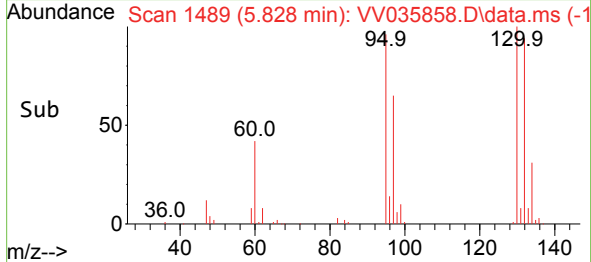
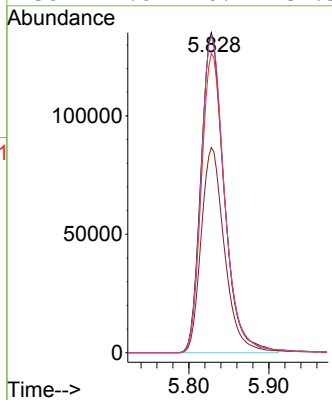


#34  
 Trichloroethene  
 Concen: 29.386 ug/L  
 RT: 5.828 min Scan# 1489  
 Delta R.T. 0.000 min  
 Lab File: VV035858.D  
 Acq: 29 May 2024 12:54

Instrument : MSVOA\_V  
 ClientSampleId :

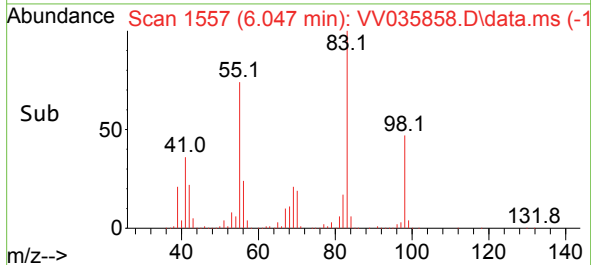
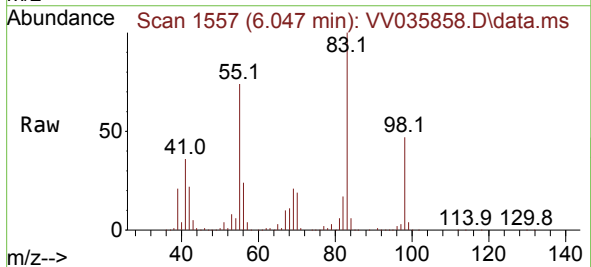
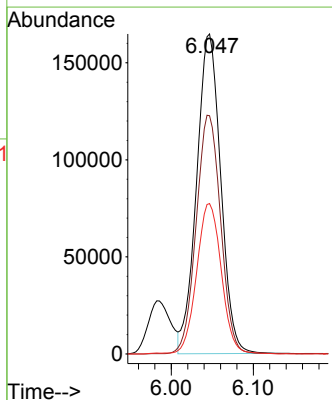


Tgt Ion: 95 Resp: 273023  
 Ion Ratio Lower Upper  
 95 100  
 97 64.2 43.8 81.4  
 132 93.5 67.1 124.7  
 130 99.0 70.7 131.3

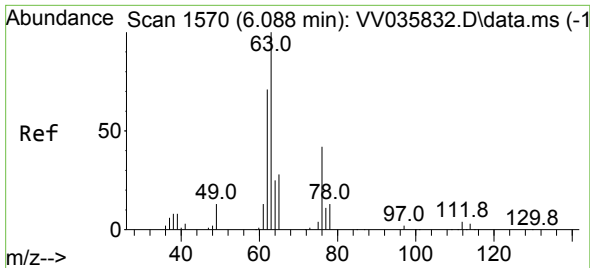


#35  
 Methylcyclohexane  
 Concen: 23.878 ug/L  
 RT: 6.047 min Scan# 1557  
 Delta R.T. 0.000 min  
 Lab File: VV035858.D  
 Acq: 29 May 2024 12:54

Tgt Ion: 83 Resp: 336811  
 Ion Ratio Lower Upper  
 83 100  
 55 75.6 57.5 86.3  
 98 48.1 38.6 58.0



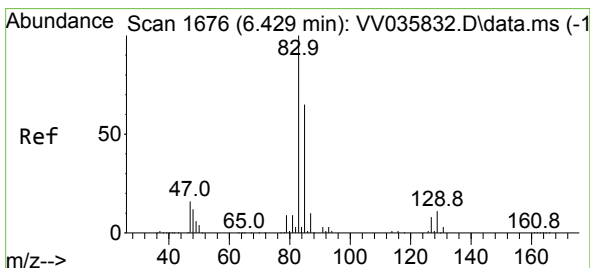
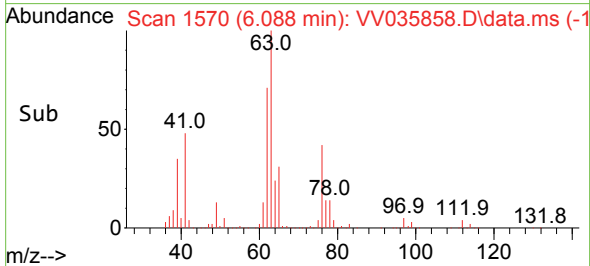
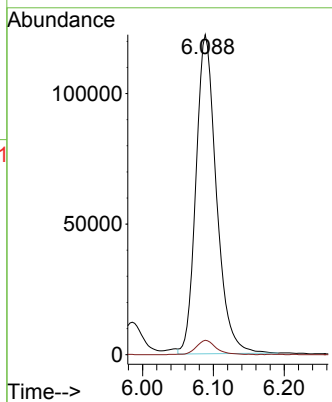
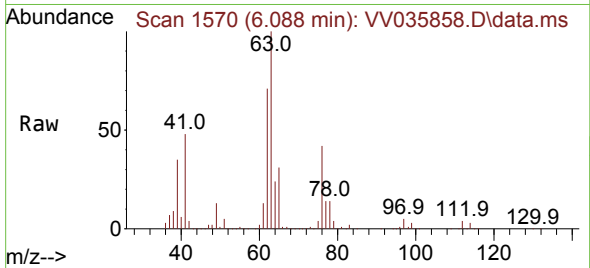




#37  
 1,2-Dichloropropane  
 Concen: 28.551 ug/L  
 RT: 6.088 min Scan# 11  
 Delta R.T. 0.000 min  
 Lab File: VV035858.D  
 Acq: 29 May 2024 12:54

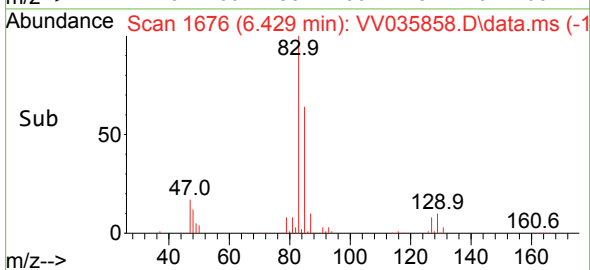
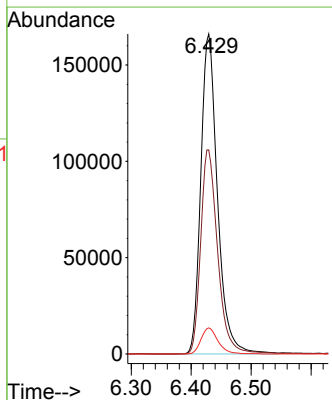
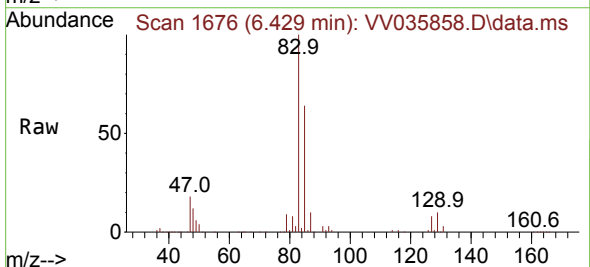
Instrument :  
 MSVOA\_V  
 ClientSampleId :

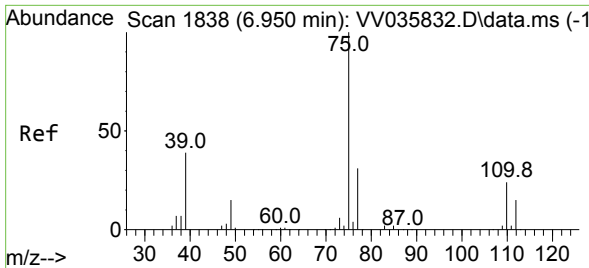
Tgt Ion: 63 Resp: 244671  
 Ion Ratio Lower Upper  
 63 100  
 112 4.2 3.8 5.6



#38  
 Bromodichloromethane  
 Concen: 27.746 ug/L  
 RT: 6.429 min Scan# 1676  
 Delta R.T. 0.000 min  
 Lab File: VV035858.D  
 Acq: 29 May 2024 12:54

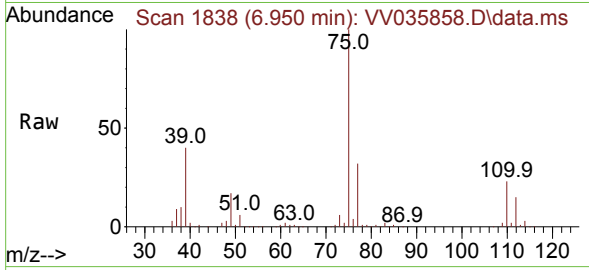
Tgt Ion: 83 Resp: 322104  
 Ion Ratio Lower Upper  
 83 100  
 85 63.7 45.1 83.9  
 127 8.2 7.0 10.6



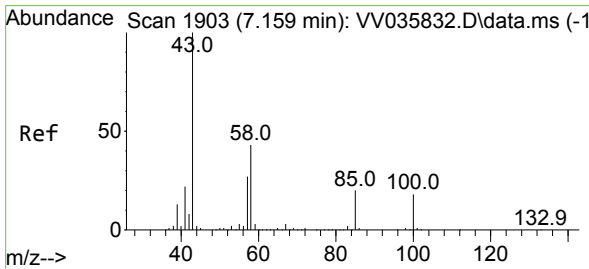
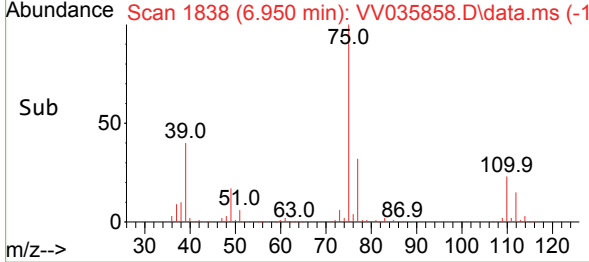
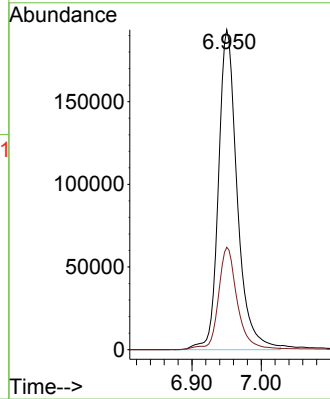


#39  
 cis-1,3-Dichloropropene  
 Concen: 27.198 ug/L  
 RT: 6.950 min Scan# 1838  
 Delta R.T. 0.000 min  
 Lab File: VV035858.D  
 Acq: 29 May 2024 12:54

Instrument : MSVOA\_V  
 ClientSampleId :

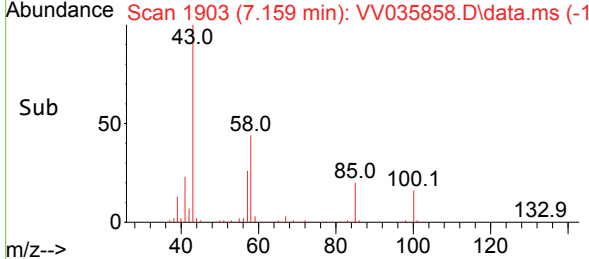
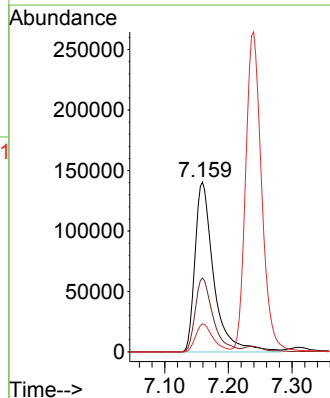
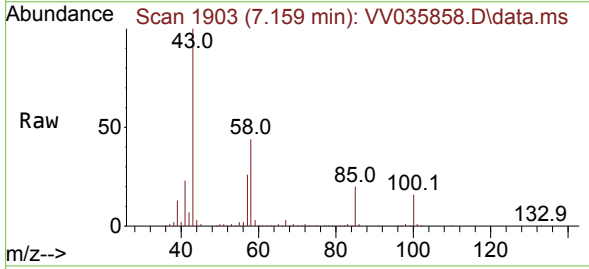


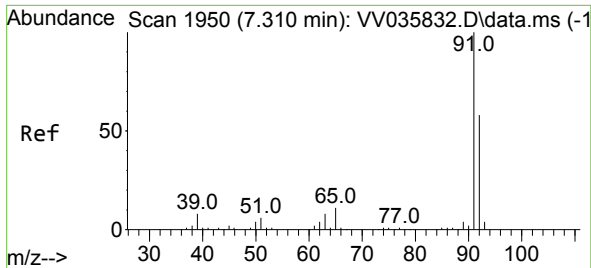
Tgt Ion: 75 Resp: 364554  
 Ion Ratio Lower Upper  
 75 100  
 77 32.0 22.5 41.9



#40  
 4-Methyl-2-pentanone  
 Concen: 56.096 ug/L  
 RT: 7.159 min Scan# 1903  
 Delta R.T. 0.000 min  
 Lab File: VV035858.D  
 Acq: 29 May 2024 12:54

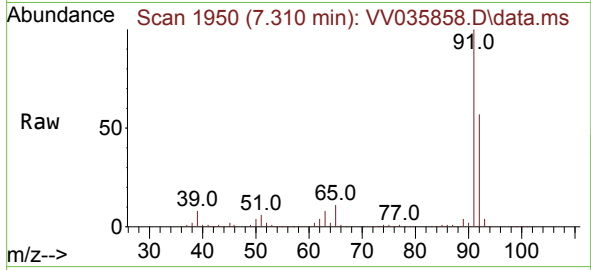
Tgt Ion: 43 Resp: 287898  
 Ion Ratio Lower Upper  
 43 100  
 58 41.3 34.8 52.2  
 100 15.6 13.9 20.9



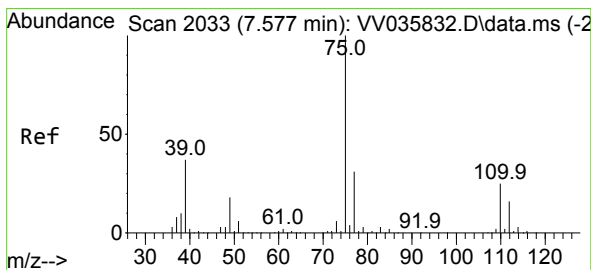
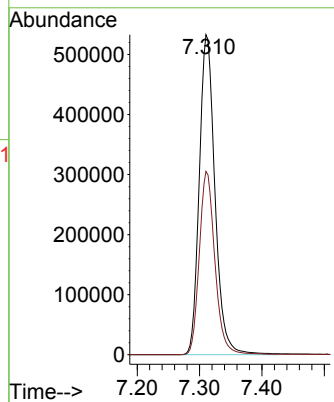
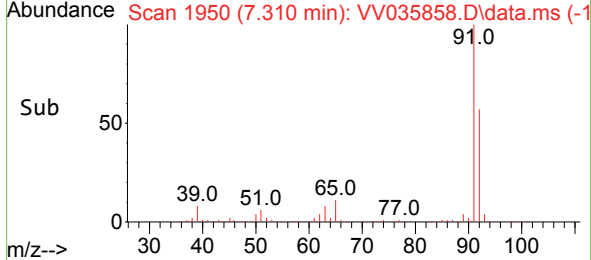


#42  
 Toluene  
 Concen: 26.831 ug/L  
 RT: 7.310 min Scan# 1950  
 Delta R.T. 0.000 min  
 Lab File: VV035858.D  
 Acq: 29 May 2024 12:54

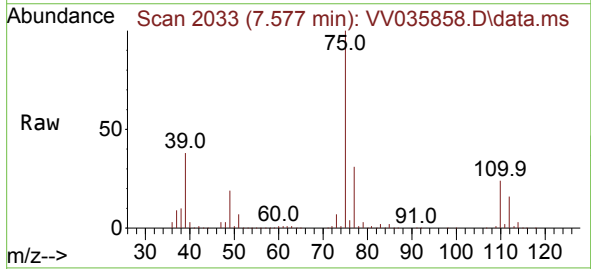
Instrument : MSVOA\_V  
 ClientSampleId :



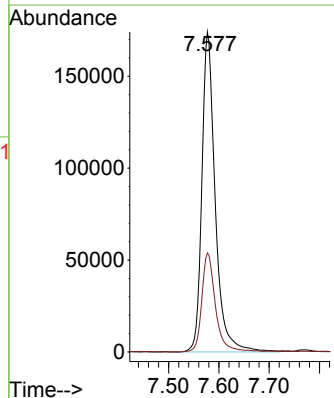
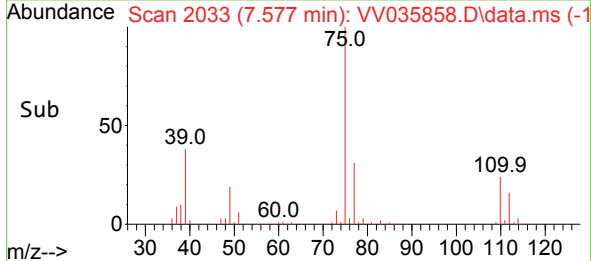
Tgt Ion: 91 Resp: 932643  
 Ion Ratio Lower Upper  
 91 100  
 92 57.2 40.2 74.6

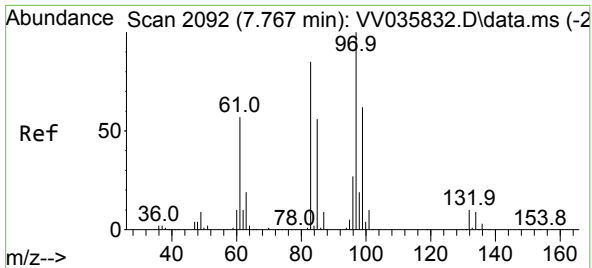


#44  
 trans-1,3-Dichloropropene  
 Concen: 27.443 ug/L  
 RT: 7.577 min Scan# 2033  
 Delta R.T. 0.000 min  
 Lab File: VV035858.D  
 Acq: 29 May 2024 12:54



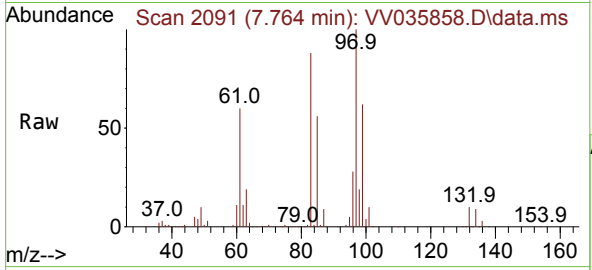
Tgt Ion: 75 Resp: 321776  
 Ion Ratio Lower Upper  
 75 100  
 77 30.9 22.4 41.6





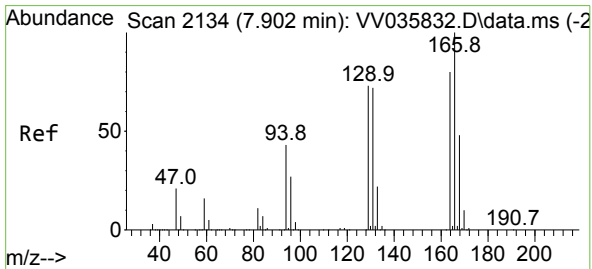
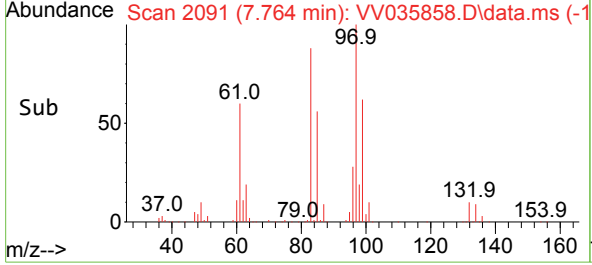
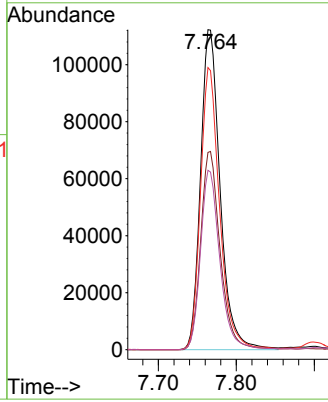
#45  
 1,1,2-Trichloroethane  
 Concen: 26.977 ug/L  
 RT: 7.764 min Scan# 2091  
 Delta R.T. -0.003 min  
 Lab File: VV035858.D  
 Acq: 29 May 2024 12:54

Instrument : MSVOA\_V  
 ClientSampleId :



Tgt Ion: 97 Resp: 196430

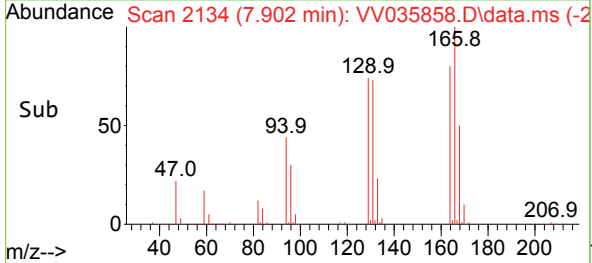
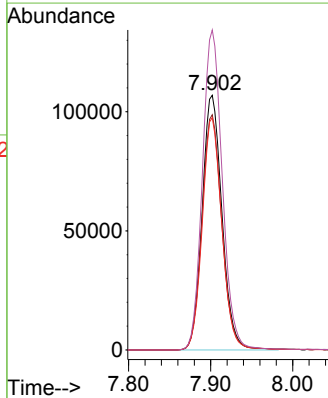
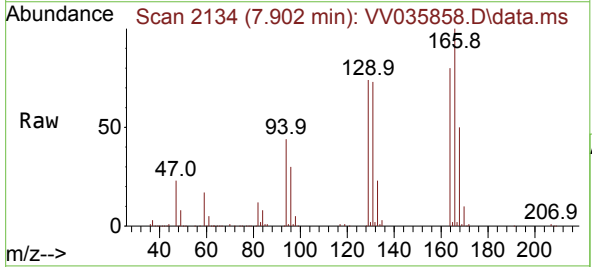
Ion	Ratio	Lower	Upper
97	100		
99	61.6	43.3	80.3
83	88.2	60.3	111.9
85	56.1	38.3	71.1

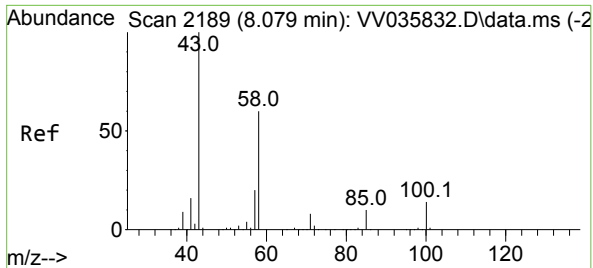


#46  
 Tetrachloroethene  
 Concen: 23.866 ug/L  
 RT: 7.902 min Scan# 2134  
 Delta R.T. 0.000 min  
 Lab File: VV035858.D  
 Acq: 29 May 2024 12:54

Tgt Ion: 164 Resp: 180142

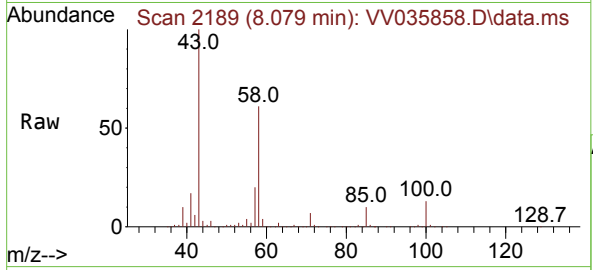
Ion	Ratio	Lower	Upper
164	100		
129	92.3	63.4	117.8
131	91.2	61.0	113.4
166	125.6	88.8	164.8





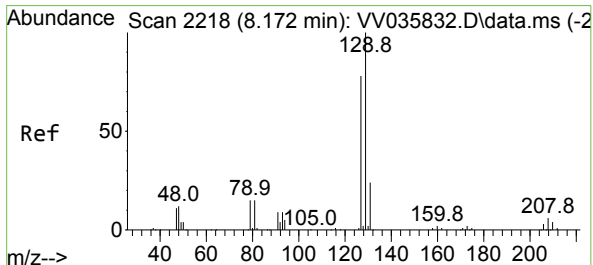
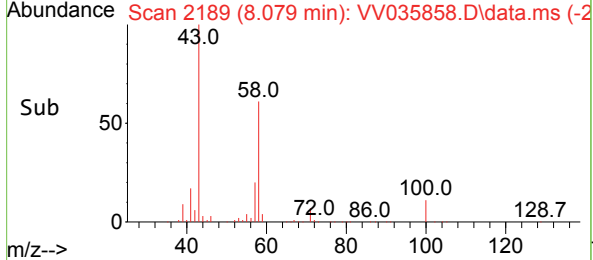
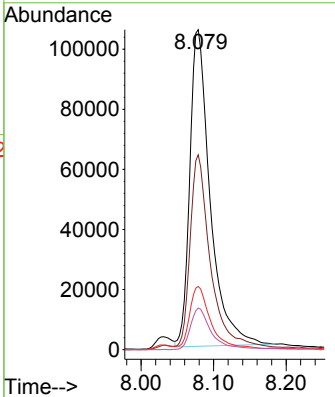
#48  
 2-Hexanone  
 Concen: 53.477 ug/L  
 RT: 8.079 min Scan# 2189  
 Delta R.T. 0.000 min  
 Lab File: VV035858.D  
 Acq: 29 May 2024 12:54

Instrument : MSVOA\_V  
 ClientSampleId :



Tgt Ion: 43 Resp: 205784

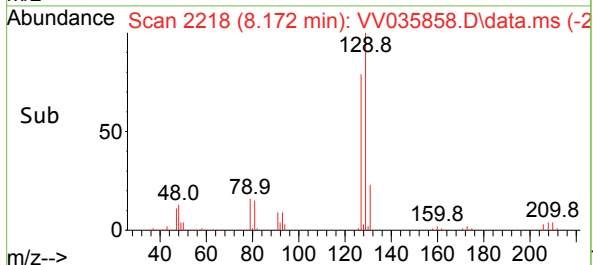
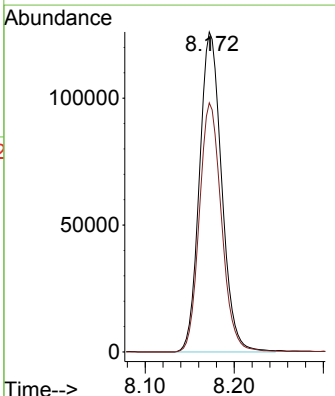
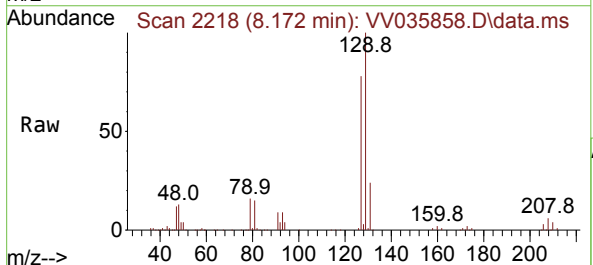
Ion	Ratio	Lower	Upper
43	100		
58	60.8	48.8	73.2
57	20.0	16.9	25.3
100	13.5	11.7	17.5

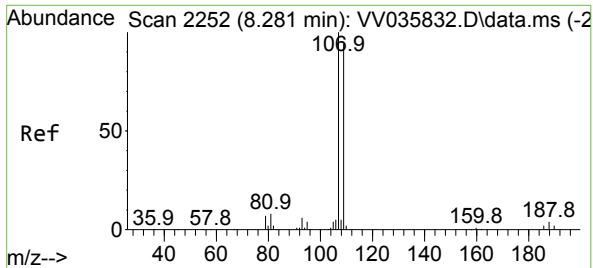


#49  
 Dibromochloromethane  
 Concen: 26.556 ug/L  
 RT: 8.172 min Scan# 2218  
 Delta R.T. 0.000 min  
 Lab File: VV035858.D  
 Acq: 29 May 2024 12:54

Tgt Ion: 129 Resp: 218184

Ion	Ratio	Lower	Upper
129	100		
127	77.9	53.8	99.8



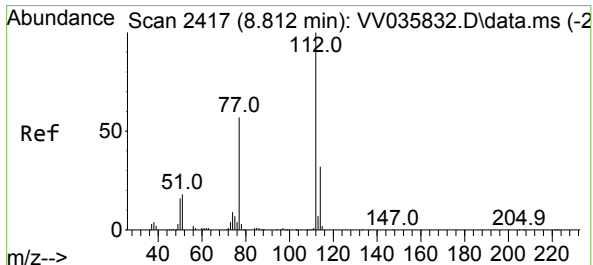
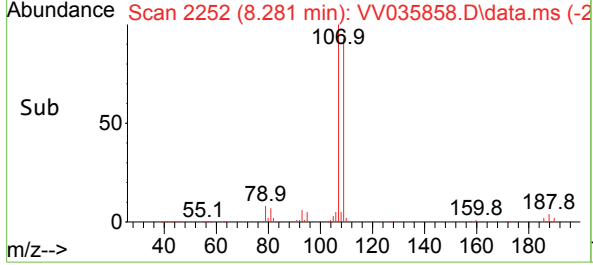
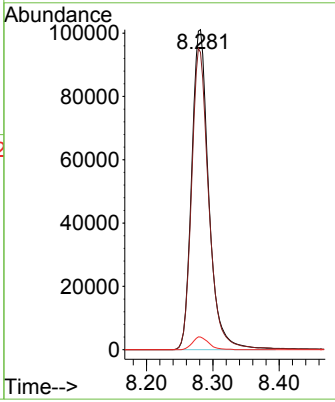
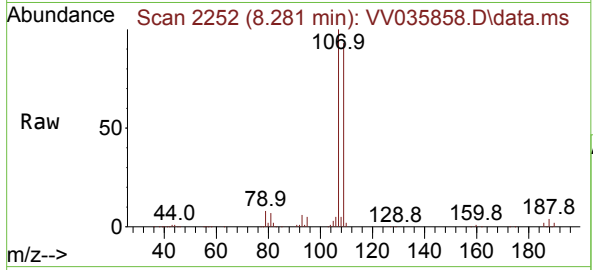


#50  
 1,2-Dibromoethane  
 Concen: 25.220 ug/L  
 RT: 8.281 min Scan# 211  
 Delta R.T. 0.000 min  
 Lab File: VV035858.D  
 Acq: 29 May 2024 12:54

Instrument : MSVOA\_V  
 ClientSampleId :

Tgt Ion:107 Resp: 180911

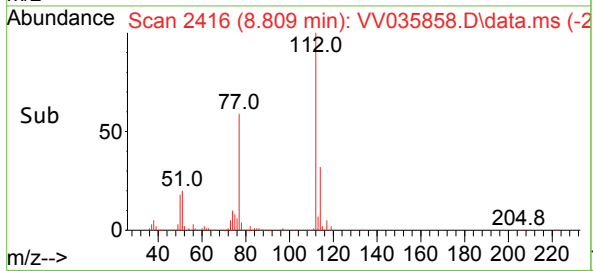
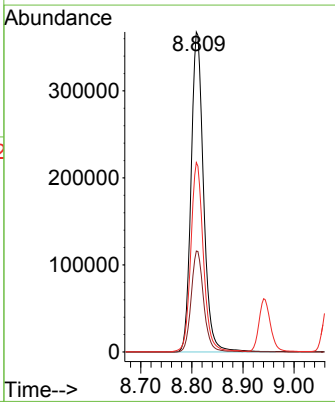
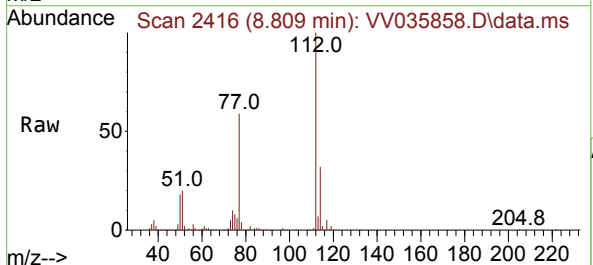
Ion	Ratio	Lower	Upper
107	100		
109	92.9	65.4	121.4
188	3.9	2.9	4.3

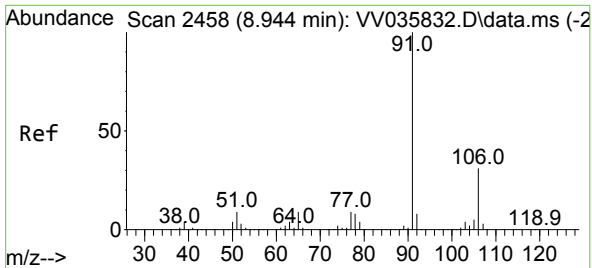


#51  
 Chlorobenzene  
 Concen: 25.847 ug/L  
 RT: 8.809 min Scan# 2416  
 Delta R.T. -0.003 min  
 Lab File: VV035858.D  
 Acq: 29 May 2024 12:54

Tgt Ion:112 Resp: 623401

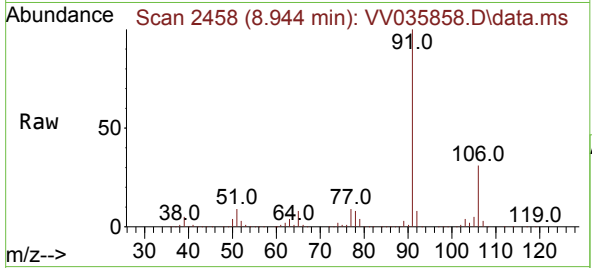
Ion	Ratio	Lower	Upper
112	100		
114	31.5	22.5	41.7
77	59.2	46.6	69.8



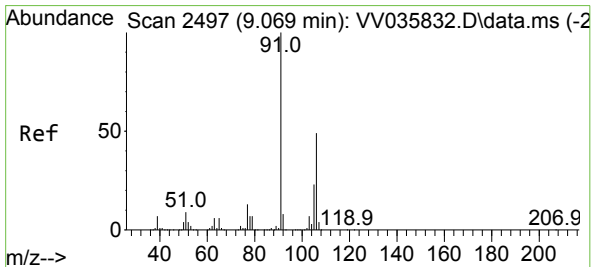
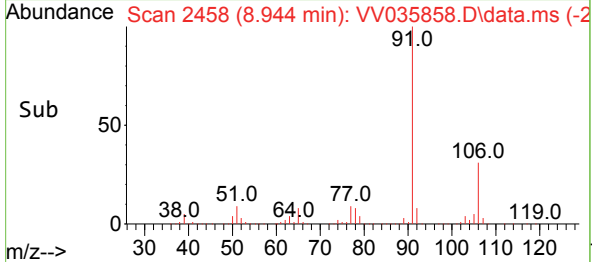
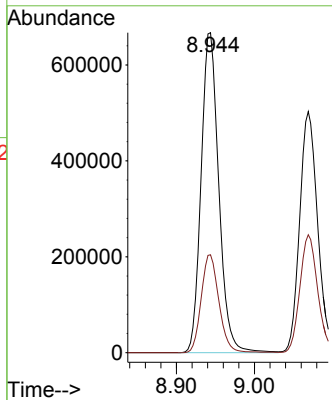


#52  
 Ethylbenzene  
 Concen: 27.390 ug/L  
 RT: 8.944 min Scan# 2458  
 Delta R.T. 0.000 min  
 Lab File: VV035858.D  
 Acq: 29 May 2024 12:54

Instrument :  
 MSVOA\_V  
 ClientSampleId :

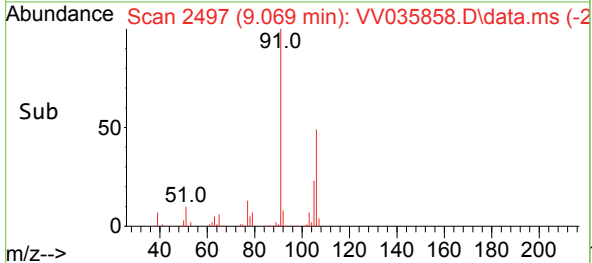
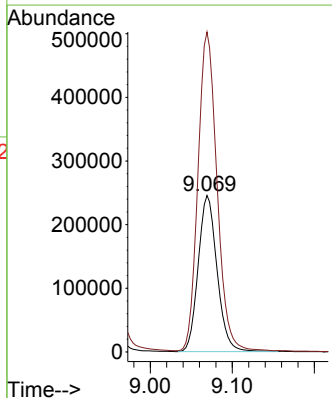
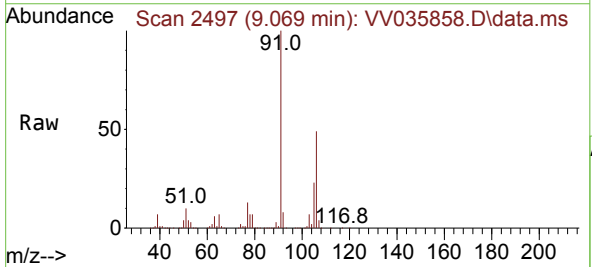


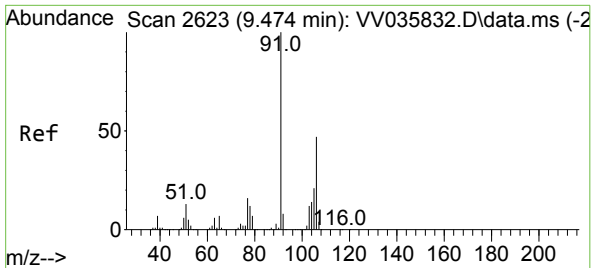
Tgt Ion: 91 Resp: 1051187  
 Ion Ratio Lower Upper  
 91 100  
 106 30.6 21.7 40.3



#53  
 m,p-Xylene  
 Concen: 26.934 ug/L  
 RT: 9.069 min Scan# 2497  
 Delta R.T. 0.000 min  
 Lab File: VV035858.D  
 Acq: 29 May 2024 12:54

Tgt Ion: 106 Resp: 392173  
 Ion Ratio Lower Upper  
 106 100  
 91 204.5 142.7 264.9

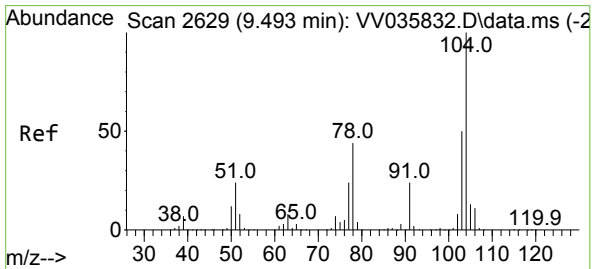
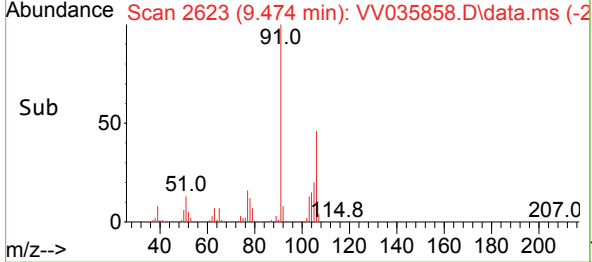
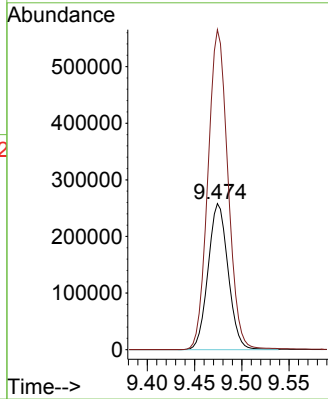
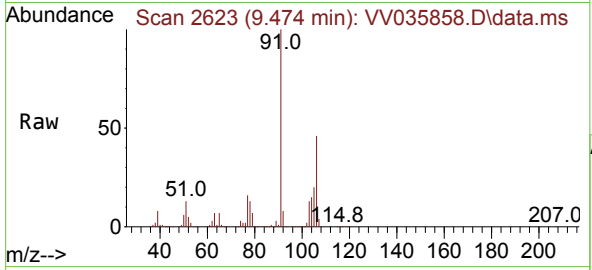




#54  
 o-Xylene  
 Concen: 27.586 ug/L  
 RT: 9.474 min Scan# 2623  
 Delta R.T. 0.000 min  
 Lab File: VV035858.D  
 Acq: 29 May 2024 12:54

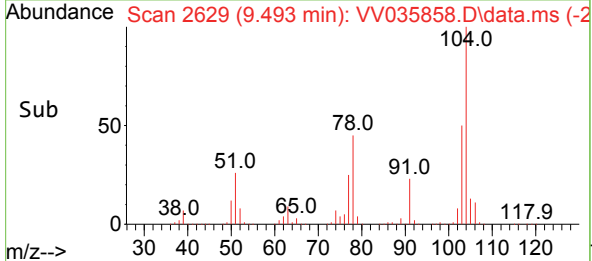
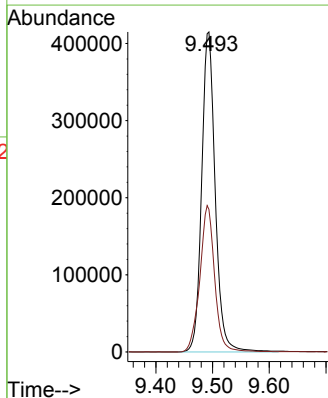
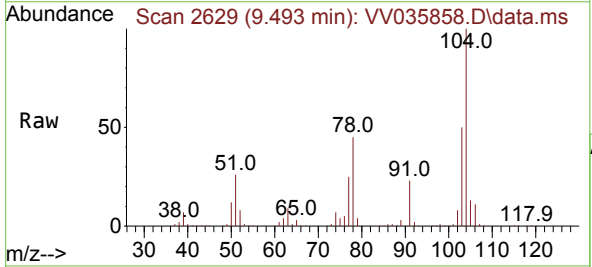
Instrument : MSVOA\_V  
 ClientSampleId :

Tgt Ion:106 Resp: 380688  
 Ion Ratio Lower Upper  
 106 100  
 91 219.1 150.9 280.3

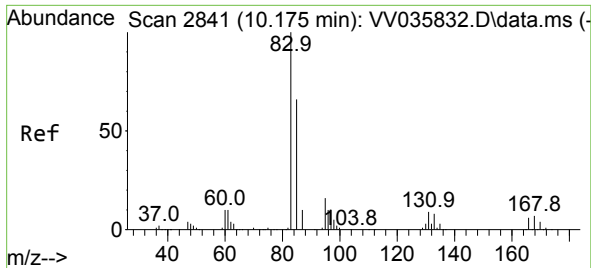


#55  
 Styrene  
 Concen: 28.672 ug/L  
 RT: 9.493 min Scan# 2629  
 Delta R.T. 0.000 min  
 Lab File: VV035858.D  
 Acq: 29 May 2024 12:54

Tgt Ion:104 Resp: 690125  
 Ion Ratio Lower Upper  
 104 100  
 78 44.6 30.0 55.6

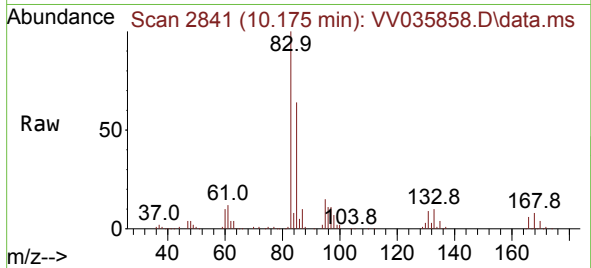






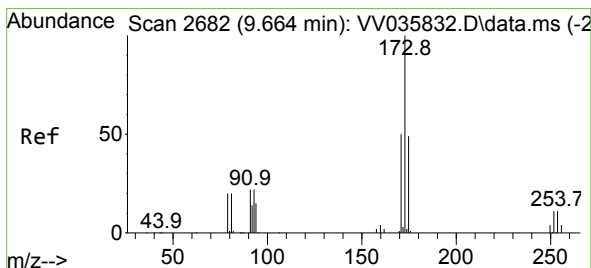
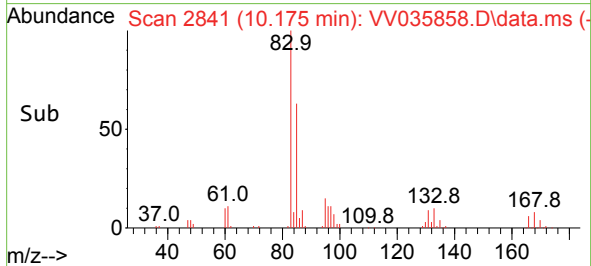
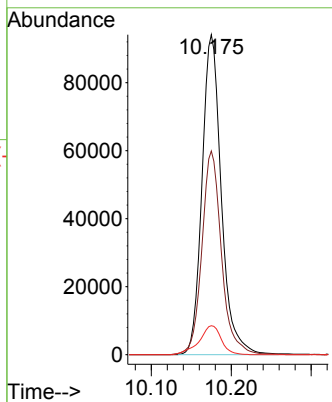
#57  
 1,1,2,2-Tetrachloroethane  
 Concen: 17.839 ug/L  
 RT: 10.175 min Scan# 2841  
 Delta R.T. 0.000 min  
 Lab File: VV035858.D  
 Acq: 29 May 2024 12:54

Instrument : MSVOA\_V  
 ClientSampleId :



Tgt Ion: 83 Resp: 158223

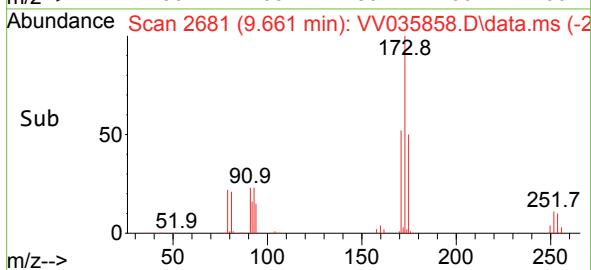
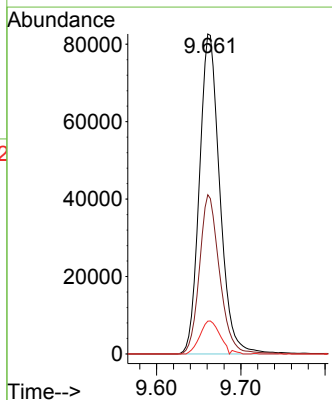
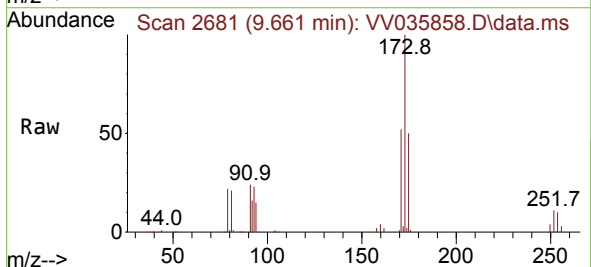
Ion	Ratio	Lower	Upper
83	100		
85	63.6	44.7	83.1
131	9.1	8.0	12.0

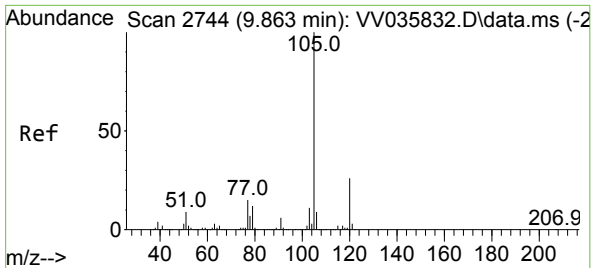


#59  
 Bromoform  
 Concen: 26.377 ug/L  
 RT: 9.661 min Scan# 2681  
 Delta R.T. -0.003 min  
 Lab File: VV035858.D  
 Acq: 29 May 2024 12:54

Tgt Ion: 173 Resp: 138974

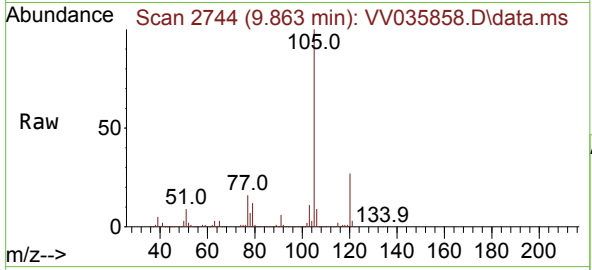
Ion	Ratio	Lower	Upper
173	100		
175	49.2	38.7	58.1
254	10.0	8.3	12.5



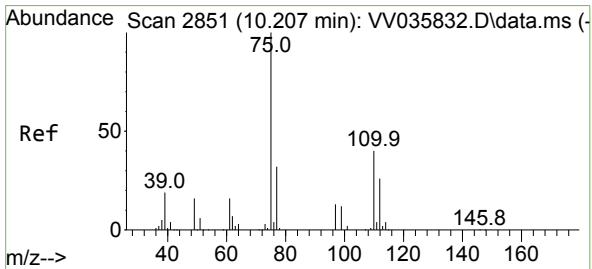
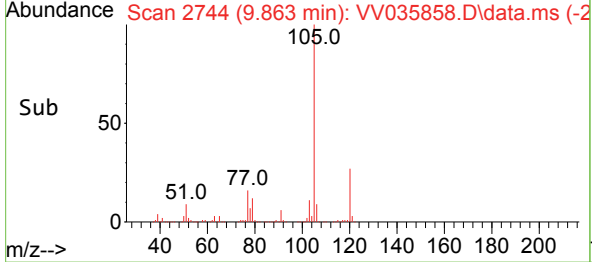
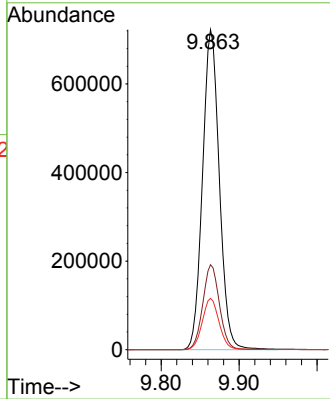


#60  
 Isopropylbenzene  
 Concen: 30.309 ug/L  
 RT: 9.863 min Scan# 21  
 Delta R.T. 0.000 min  
 Lab File: VV035858.D  
 Acq: 29 May 2024 12:54

Instrument :  
 MSVOA\_V  
 ClientSampleId :

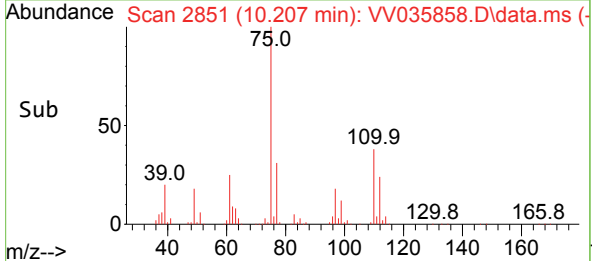
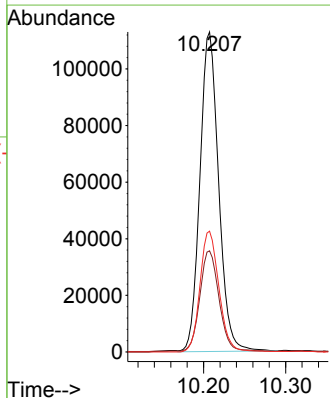
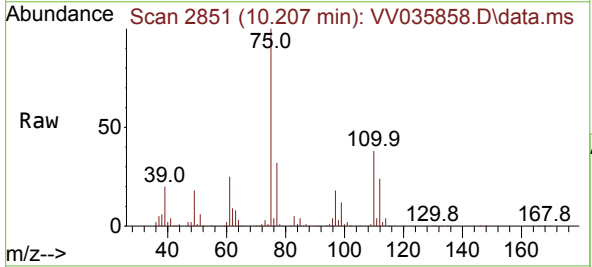


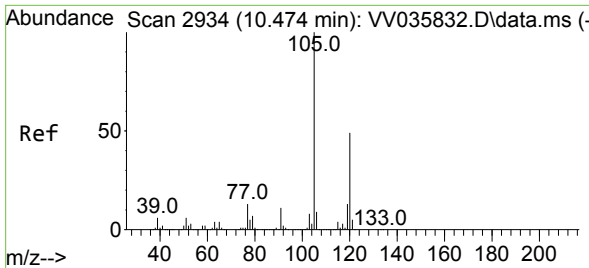
Tgt Ion:105 Resp: 1082439  
 Ion Ratio Lower Upper  
 105 100  
 120 26.4 21.3 31.9  
 77 16.0 12.2 18.2



#61  
 1,2,3-Trichloropropane  
 Concen: 28.427 ug/L  
 RT: 10.207 min Scan# 2851  
 Delta R.T. 0.000 min  
 Lab File: VV035858.D  
 Acq: 29 May 2024 12:54

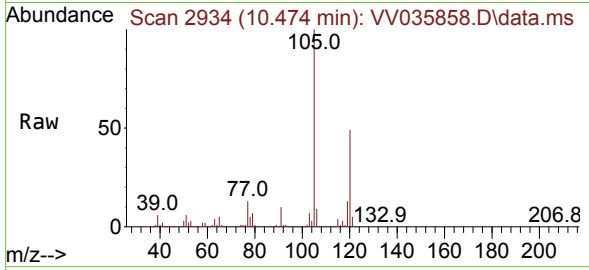
Tgt Ion: 75 Resp: 178592  
 Ion Ratio Lower Upper  
 75 100  
 77 32.3 25.7 38.5  
 110 38.5 31.8 47.8



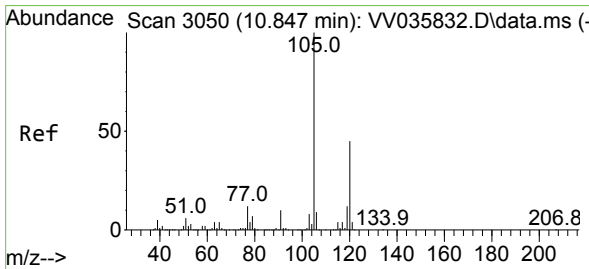
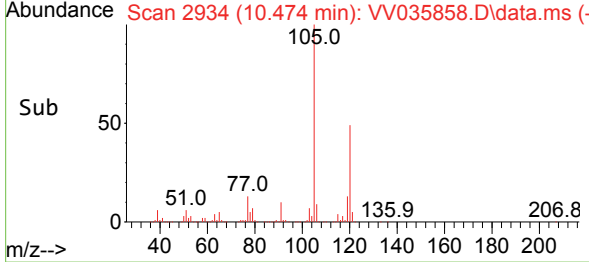
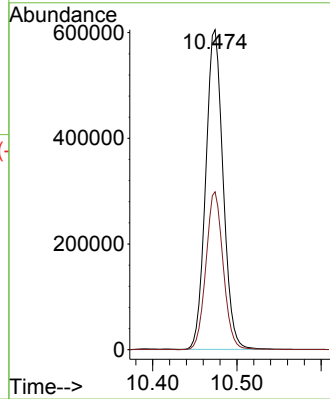


#62  
 1,3,5-Trimethylbenzene  
 Concen: 31.011 ug/L  
 RT: 10.474 min Scan# 2934  
 Delta R.T. 0.000 min  
 Lab File: VV035858.D  
 Acq: 29 May 2024 12:54

Instrument :  
 MSVOA\_V  
 ClientSampled :

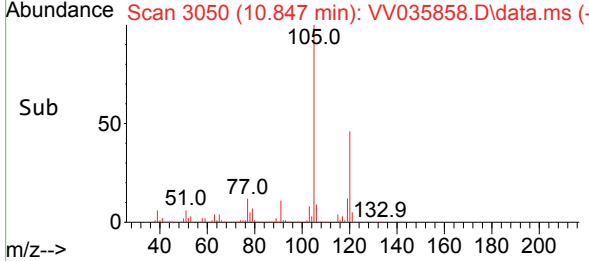
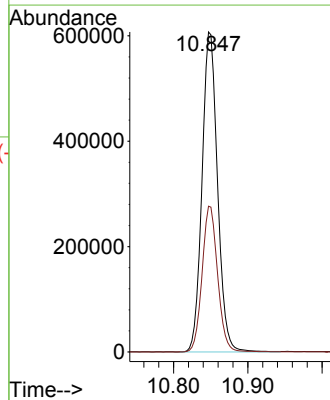
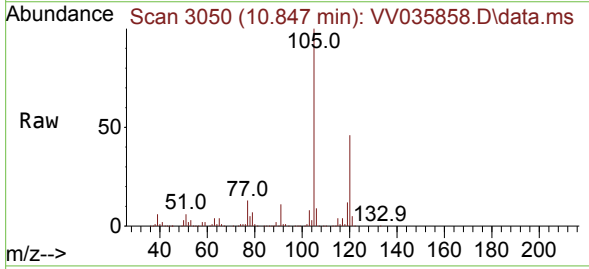


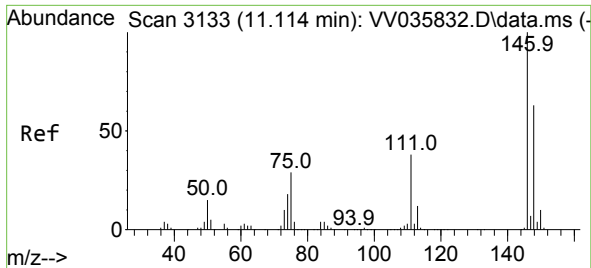
Tgt Ion:105 Resp: 868801  
 Ion Ratio Lower Upper  
 105 100  
 120 49.1 39.4 59.0



#63  
 1,2,4-Trimethylbenzene  
 Concen: 30.581 ug/L  
 RT: 10.847 min Scan# 3050  
 Delta R.T. 0.000 min  
 Lab File: VV035858.D  
 Acq: 29 May 2024 12:54

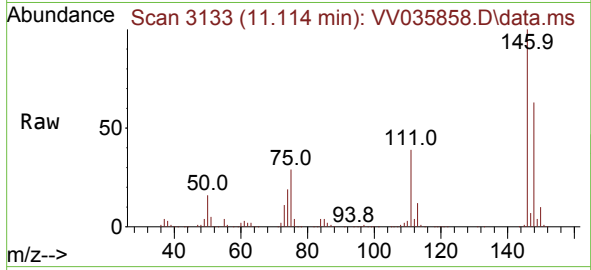
Tgt Ion:105 Resp: 880412  
 Ion Ratio Lower Upper  
 105 100  
 120 45.6 36.6 55.0



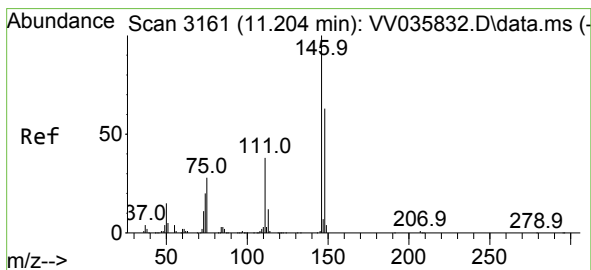
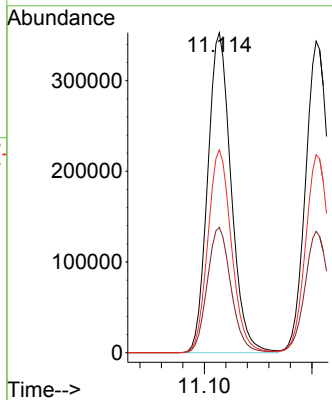
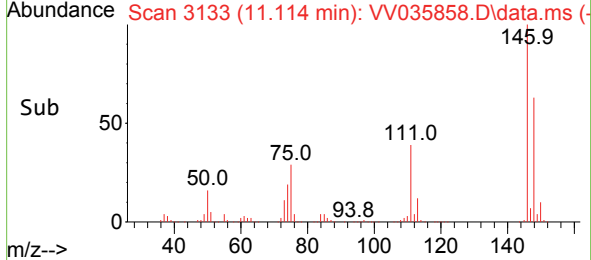


#64  
 1,3-Dichlorobenzene  
 Concen: 28.450 ug/L  
 RT: 11.114 min Scan# 3113  
 Delta R.T. 0.000 min  
 Lab File: VV035858.D  
 Acq: 29 May 2024 12:54

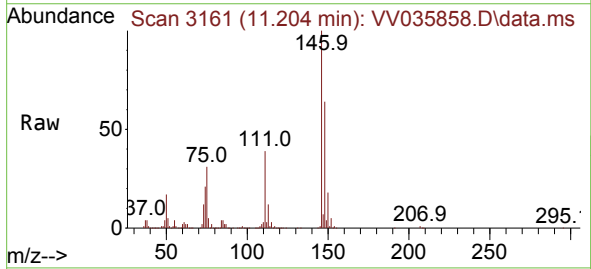
Instrument : MSVOA\_V  
 ClientSampleId :



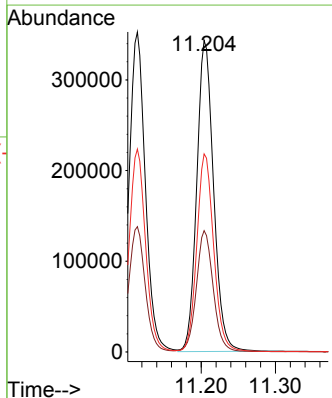
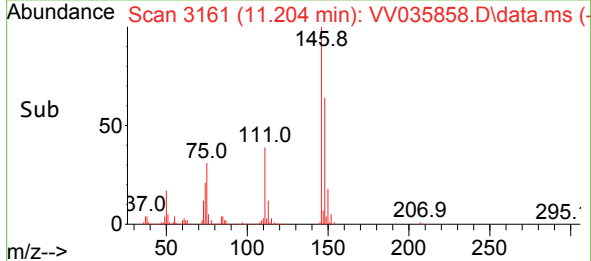
Tgt Ion:146 Resp: 533209  
 Ion Ratio Lower Upper  
 146 100  
 111 39.1 27.0 50.2  
 148 63.4 44.3 82.3

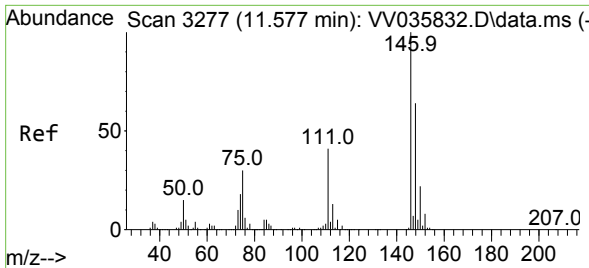


#65  
 1,4-Dichlorobenzene  
 Concen: 27.857 ug/L  
 RT: 11.204 min Scan# 3161  
 Delta R.T. 0.000 min  
 Lab File: VV035858.D  
 Acq: 29 May 2024 12:54



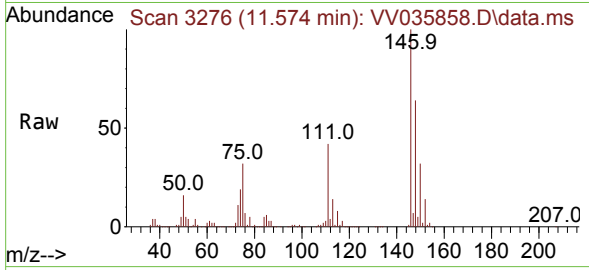
Tgt Ion:146 Resp: 540493  
 Ion Ratio Lower Upper  
 146 100  
 111 38.9 26.2 48.6  
 148 63.6 44.9 83.3



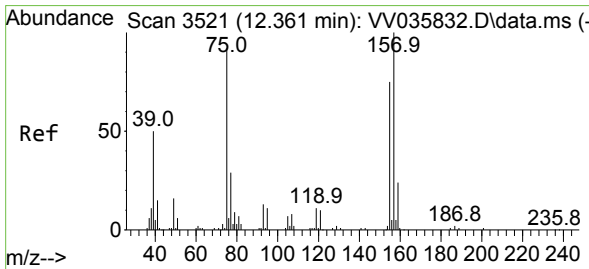
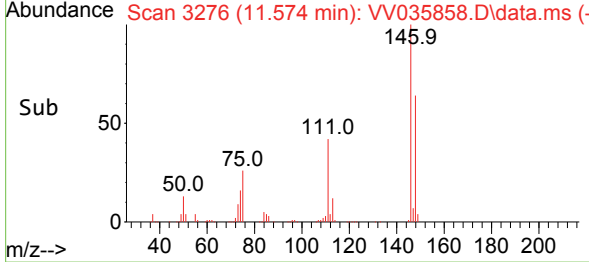
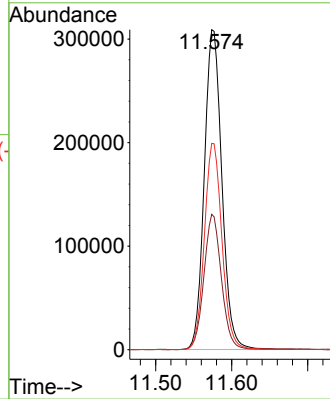


#67  
 1,2-Dichlorobenzene  
 Concen: 28.122 ug/L  
 RT: 11.574 min Scan# 31  
 Delta R.T. -0.003 min  
 Lab File: VV035858.D  
 Acq: 29 May 2024 12:54

Instrument :  
 MSVOA\_V  
 ClientSampleId :

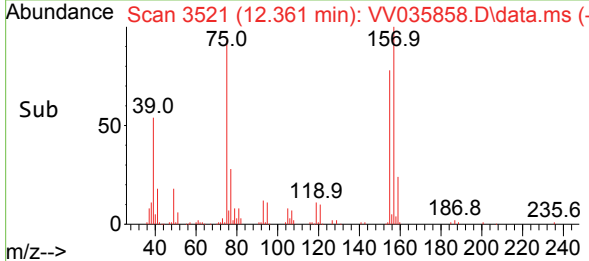
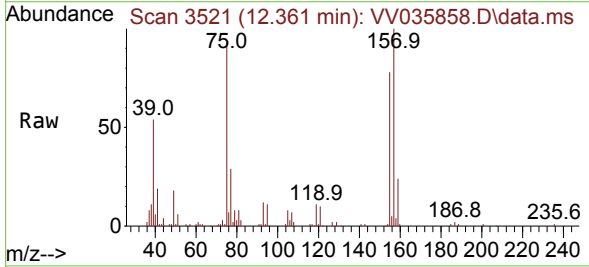
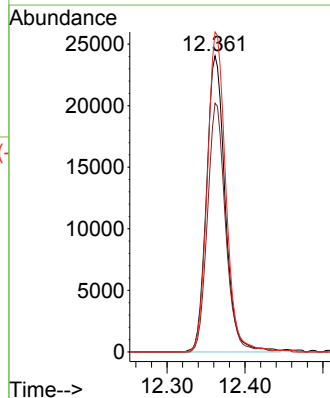


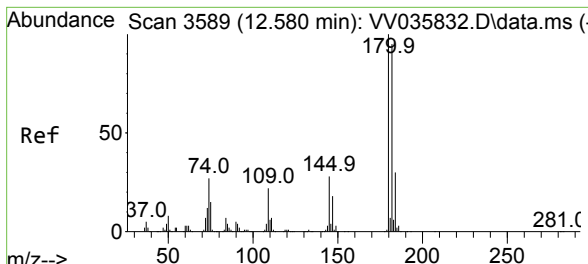
Tgt Ion:146 Resp: 496145  
 Ion Ratio Lower Upper  
 146 100  
 111 42.3 32.6 48.8  
 148 64.5 51.1 76.7



#68  
 1,2-Dibromo-3-chloropropane  
 Concen: 27.468 ug/L  
 RT: 12.361 min Scan# 3521  
 Delta R.T. 0.000 min  
 Lab File: VV035858.D  
 Acq: 29 May 2024 12:54

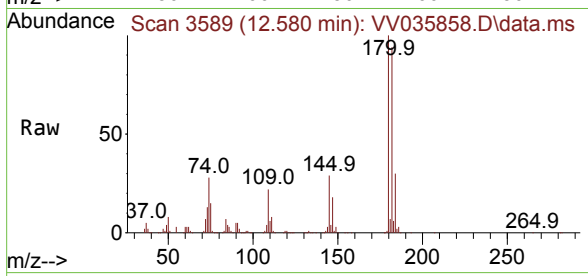
Tgt Ion: 75 Resp: 40022  
 Ion Ratio Lower Upper  
 75 100  
 155 84.0 69.8 104.6  
 157 108.1 95.0 142.6





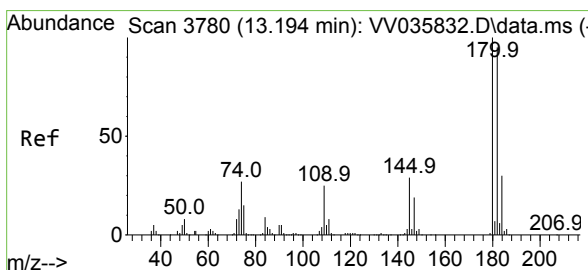
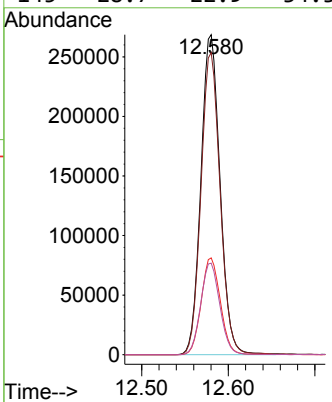
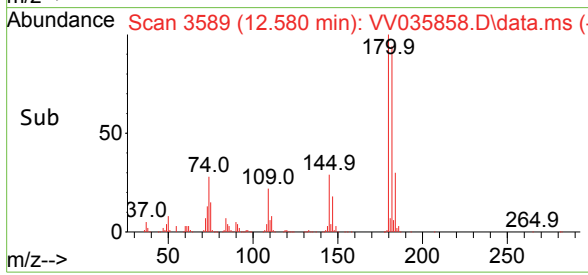
#69  
 1,3,5-Trichlorobenzene  
 Concen: 28.171 ug/L  
 RT: 12.580 min Scan# 3589  
 Delta R.T. 0.000 min  
 Lab File: VV035858.D  
 Acq: 29 May 2024 12:54

Instrument : MSVOA\_V  
 ClientSampleId :

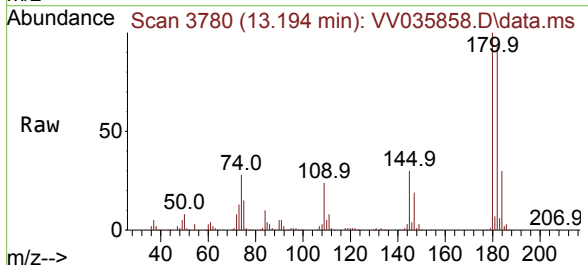


Tgt Ion:180 Resp: 412594

Ion	Ratio	Lower	Upper
180	100		
182	94.1	76.2	114.2
184	30.3	24.1	36.1
145	28.7	22.9	34.3

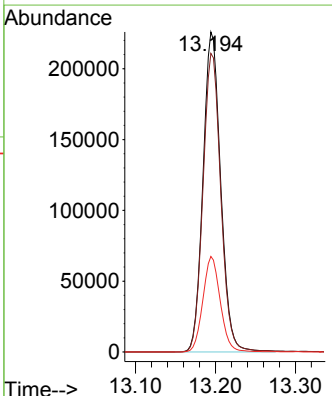
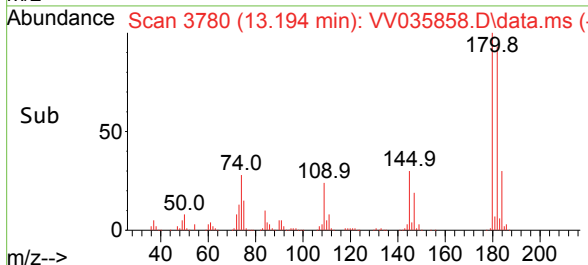


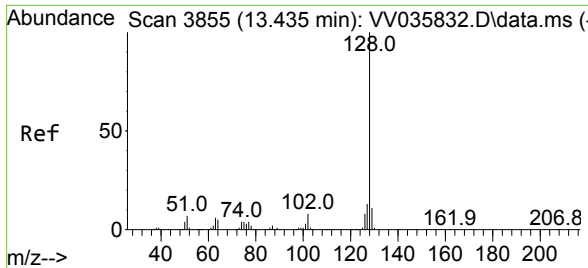
#70  
 1,2,4-trichlorobenzene  
 Concen: 28.424 ug/L  
 RT: 13.194 min Scan# 3780  
 Delta R.T. 0.000 min  
 Lab File: VV035858.D  
 Acq: 29 May 2024 12:54



Tgt Ion:180 Resp: 347619

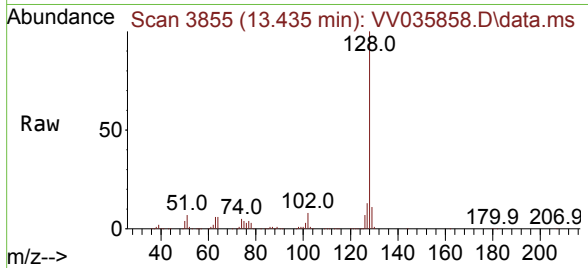
Ion	Ratio	Lower	Upper
180	100		
182	93.8	76.6	114.8
145	29.3	23.2	34.8



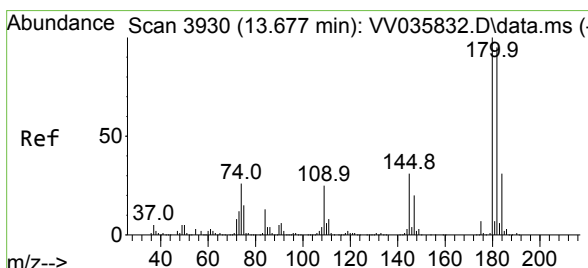
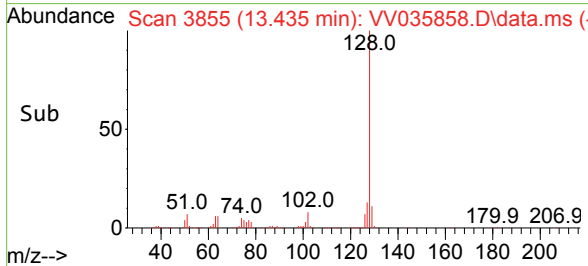
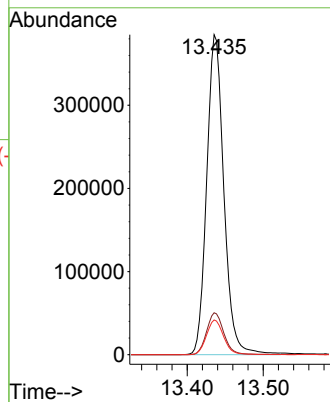


#71  
 Naphthalene  
 Concen: 28.136 ug/L  
 RT: 13.435 min Scan# 31  
 Delta R.T. 0.000 min  
 Lab File: VV035858.D  
 Acq: 29 May 2024 12:54

Instrument : MSVOA\_V  
 ClientSampleId :



Tgt Ion:128 Resp: 604060  
 Ion Ratio Lower Upper  
 128 100  
 127 13.2 10.4 15.6  
 129 10.8 8.6 13.0



#72  
 1,2,3-Trichlorobenzene  
 Concen: 29.050 ug/L  
 RT: 13.677 min Scan# 3930  
 Delta R.T. 0.000 min  
 Lab File: VV035858.D  
 Acq: 29 May 2024 12:54

Tgt Ion:180 Resp: 319596  
 Ion Ratio Lower Upper  
 180 100  
 182 94.9 75.8 113.6  
 145 31.4 25.2 37.8

