

Data Path : Z:\voasrv\HPCHEM1\MSVOA_V\Data\VW052924\
 Data File : VW035864.D
 Acq On : 29 May 2024 15:41
 Operator : SY/MD
 Sample : P2632-12
 Misc : 4.26g/10.0mL/MSVOA_V/SOIL/A
 ALS Vial : 9 Sample Multiplier: 1

Instrument :
 MSVOA_V
 ClientSampleId :

Quant Time: May 30 01:18:59 2024
 Quant Method : Z:\voasrv\HPCHEM1\MSVOA_V\Method\SFAMVLM050624SMA.M
 Quant Title : VOC Analysis
 QLast Update : Thu May 30 01:13:31 2024
 Response via : Initial Calibration

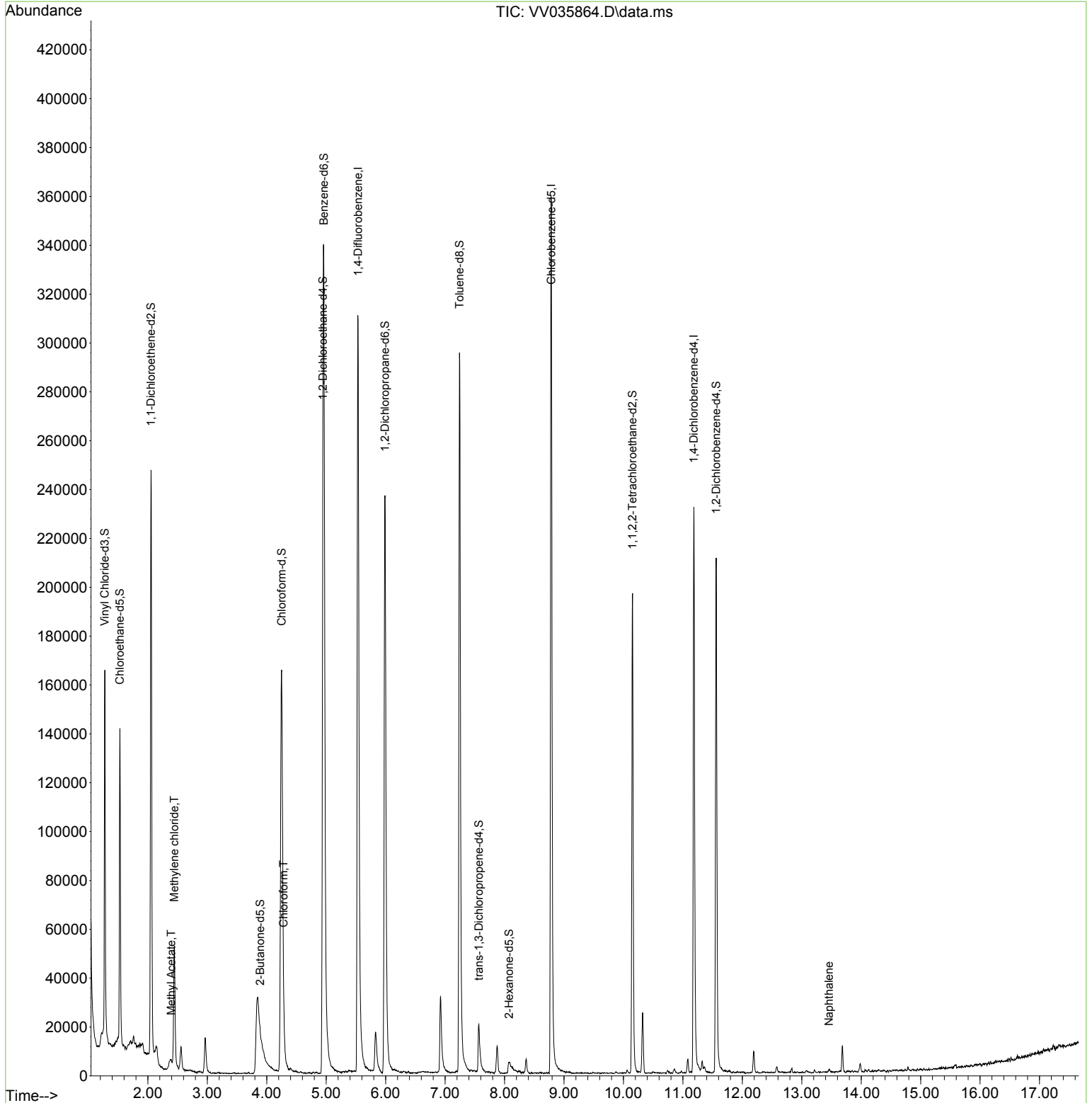
Compound	R.T.	QIon	Response	Conc	Units	Dev(Min)
Internal Standards						
1) 1,4-Difluorobenzene	5.535	114	277046	25.000	ug/L	0.00
28) Chlorobenzene-d5	8.786	117	211773	25.000	ug/L	0.00
58) 1,4-Dichlorobenzene-d4	11.185	152	64466	25.000	ug/L	0.00
System Monitoring Compounds						
4) Vinyl Chloride-d3	1.275	65	96709	22.585	ug/L	0.00
Spiked Amount	25.000	Range 30 - 150	Recovery =	90.320%		
7) Chloroethane-d5	1.529	69	84053	24.331	ug/L	0.00
Spiked Amount	25.000	Range 30 - 150	Recovery =	97.320%		
11) 1,1-Dichloroethene-d2	2.053	65	41434	21.856	ug/L	0.00
Spiked Amount	25.000	Range 45 - 110	Recovery =	87.440%		
21) 2-Butanone-d5	3.889	46	1387	1.141	ug/L	0.05
Spiked Amount	50.000	Range 20 - 135	Recovery =	2.280%#		
24) Chloroform-d	4.249	84	183046	22.224	ug/L	0.00
Spiked Amount	25.000	Range 40 - 150	Recovery =	88.880%		
26) 1,2-Dichloroethane-d4	4.944	65	92028	22.601	ug/L	0.00
Spiked Amount	25.000	Range 70 - 130	Recovery =	90.400%		
32) Benzene-d6	4.960	84	311742	26.892	ug/L	0.00
Spiked Amount	25.000	Range 20 - 135	Recovery =	107.560%		
36) 1,2-Dichloropropane-d6	5.989	67	123889	34.630	ug/L	0.00
Spiked Amount	25.000	Range 70 - 120	Recovery =	138.520%#		
41) Toluene-d8	7.243	98	214474	20.788	ug/L	0.00
Spiked Amount	25.000	Range 30 - 130	Recovery =	83.160%		
43) trans-1,3-Dichloroprop...	7.567	79	14711	9.615	ug/L	0.02
Spiked Amount	25.000	Range 30 - 135	Recovery =	38.480%		
47) 2-Hexanone-d5	8.079	63	1675	2.604	ug/L	0.05
Spiked Amount	50.000	Range 20 - 135	Recovery =	5.200%#		
56) 1,1,2,2-Tetrachloroeth...	10.152	84	97622	28.318	ug/L	0.00
Spiked Amount	25.000	Range 45 - 120	Recovery =	113.280%		
66) 1,2-Dichlorobenzene-d4	11.561	152	57581	25.737	ug/L	0.00
Spiked Amount	25.000	Range 75 - 120	Recovery =	102.960%		
Target Compounds						
15) Methyl Acetate	2.394	43	2549	0.946	ug/L #	77
16) Methylene chloride	2.445	84	20884	3.269	ug/L	87
25) Chloroform	4.281	83	6608	0.707	ug/L	94
71) Naphthalene	13.458	128	1562	0.303	ug/L #	87

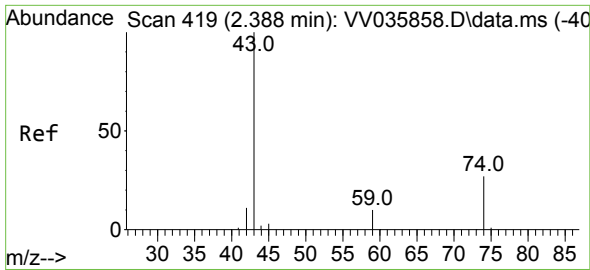
(#) = qualifier out of range (m) = manual integration (+) = signals summed

Data Path : Z:\voasrv\HPCHEM1\MSVOA_V\Data\VV052924\
 Data File : VV035864.D
 Acq On : 29 May 2024 15:41
 Operator : SY/MD
 Sample : P2632-12
 Misc : 4.26g/10.0mL/MSVOA_V/SOIL/A
 ALS Vial : 9 Sample Multiplier: 1

Instrument :
 MSVOA_V
 ClientSampleId :

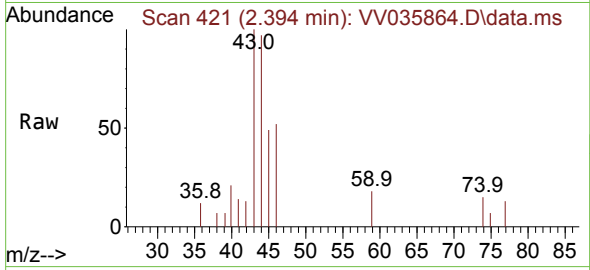
Quant Time: May 30 01:18:59 2024
 Quant Method : Z:\voasrv\HPCHEM1\MSVOA_V\Method\SFAMVLM050624SMA.M
 Quant Title : VOC Analysis
 QLast Update : Thu May 30 01:13:31 2024
 Response via : Initial Calibration



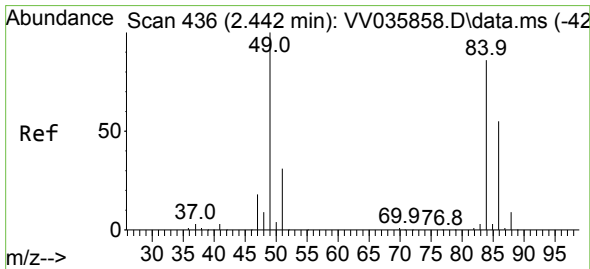
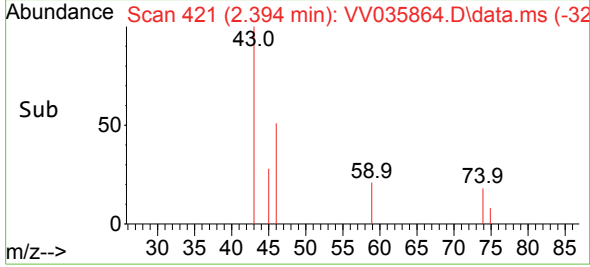
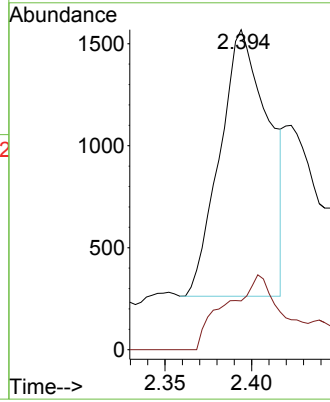


#15
 Methyl Acetate
 Concen: 0.946 ug/L
 RT: 2.394 min Scan# 41
 Delta R.T. 0.006 min
 Lab File: VV035864.D
 Acq: 29 May 2024 15:41

Instrument : MSVOA_V
 ClientSampleId :

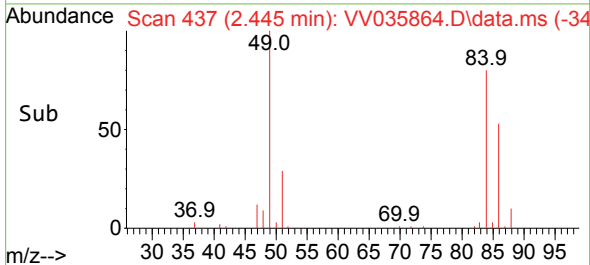
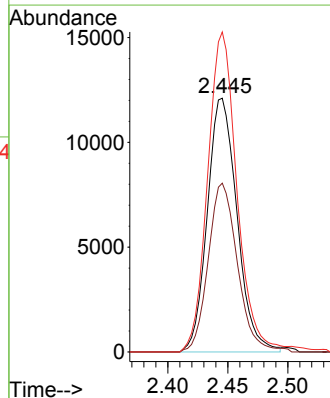
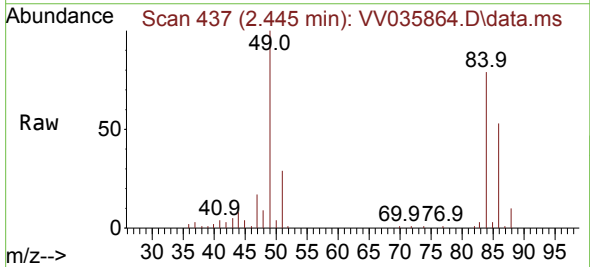


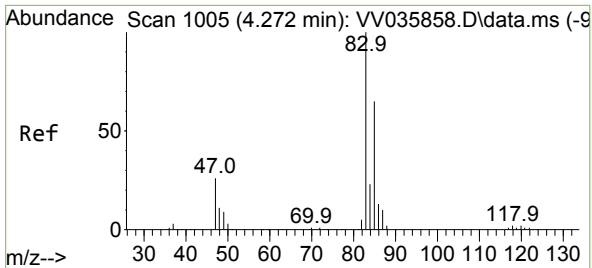
Tgt Ion: 43 Resp: 2549
 Ion Ratio Lower Upper
 43 100
 74 12.0 18.6 27.8#



#16
 Methylene chloride
 Concen: 3.269 ug/L
 RT: 2.445 min Scan# 437
 Delta R.T. 0.003 min
 Lab File: VV035864.D
 Acq: 29 May 2024 15:41

Tgt Ion: 84 Resp: 20884
 Ion Ratio Lower Upper
 84 100
 86 66.5 43.8 81.3
 49 126.1 75.3 139.9

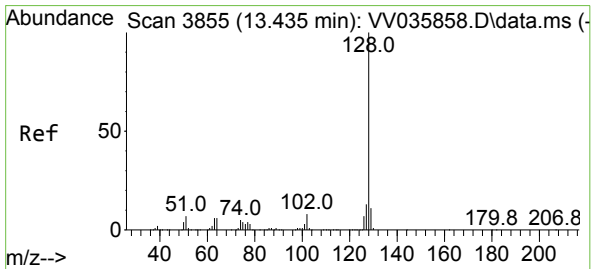
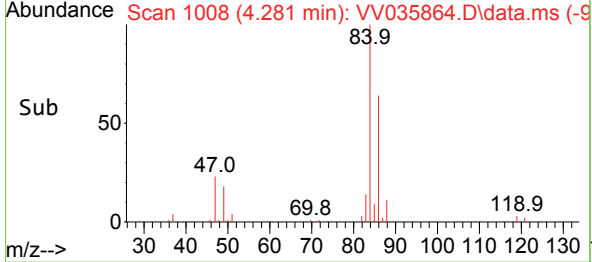
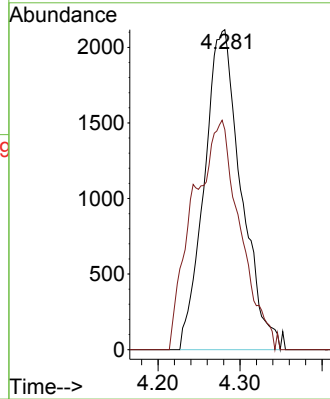
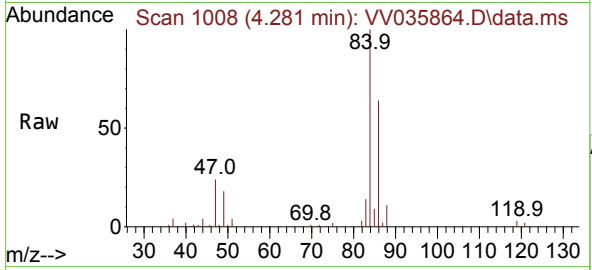




#25
 Chloroform
 Concen: 0.707 ug/L
 RT: 4.281 min Scan# 1008
 Delta R.T. 0.010 min
 Lab File: VV035864.D
 Acq: 29 May 2024 15:41

Instrument : MSVOA_V
 ClientSampled :

Tgt Ion	Resp	Lower	Upper
83	6608		
83	100		
85	68.7	44.7	82.9



#71
 Naphthalene
 Concen: 0.303 ug/L
 RT: 13.458 min Scan# 3862
 Delta R.T. 0.022 min
 Lab File: VV035864.D
 Acq: 29 May 2024 15:41

Tgt Ion	Resp	Lower	Upper
128	1562		
128	100		
127	10.6	10.4	15.6
129	2.6	8.6	13.0#

