

Data Path : Z:\voasrv\HPCHEM1\MSVOA_V\Data\VV053024\
 Data File : VV035895.D
 Acq On : 30 May 2024 15:15
 Operator : SY/MD
 Sample : P2632-14
 Misc : 3.76g/10.0mL/MSVOA_V/SOIL/B
 ALS Vial : 18 Sample Multiplier: 1

Instrument :
 MSVOA_V
 ClientSampleId :
 BHBYO

Integration Parameters: LSCINT.P

Integrator: RTE
 Smoothing : OFF Filtering: 5
 Sampling : 1 Min Area: 0 % of largest Peak
 Start Thrs: 0.2 Max Peaks: 100
 Stop Thrs : 0 Peak Location: TOP

If leading or trailing edge < 100 prefer < Baseline drop else tangent >
 Peak separation: 5

Method : Z:\voasrv\HPCHEM1\MSVOA_V\Method\SFAMVLM053024SMA.M
 Title : VOC Analysis

Signal : TIC: VV035895.D\data.ms

peak #	R.T. min	first scan	max scan	last scan	PK TY	peak height	corr. area	corr. % max.	% of total
1	1.275	66	73	93	rVB	297911	328854	16.22%	2.081%
2	1.529	144	152	167	rVB	252132	300410	14.82%	1.901%
3	2.053	305	315	332	rVB	499920	719733	35.51%	4.553%
4	2.442	426	436	455	rVB	76830	128499	6.34%	0.813%
5	2.555	461	471	485	rVB2	13246	28618	1.41%	0.181%
6	2.690	509	513	514	rBV3	1721	1159	0.06%	0.007%
7	2.838	555	559	563	rBV4	523	557	0.03%	0.004%
8	2.963	584	598	616	rBV3	17843	37561	1.85%	0.238%
9	3.092	634	638	639	rBV	730	426	0.02%	0.003%
10	3.179	661	665	668	rVB4	732	473	0.02%	0.003%
11	3.323	705	710	712	rBV2	406	398	0.02%	0.003%
12	3.410	732	737	742	rVB2	335	384	0.02%	0.002%
13	3.487	756	761	762	rBV2	398	331	0.02%	0.002%
14	3.552	776	781	783	rBV2	551	411	0.02%	0.003%
15	3.780	848	852	853	rBV	610	373	0.02%	0.002%
16	3.838	853	870	914	rBV2	59738	315838	15.58%	1.998%
17	4.243	980	996	1031	rBV	330008	870416	42.94%	5.507%
18	4.687	1129	1134	1136	rBV4	459	339	0.02%	0.002%
19	4.732	1145	1148	1157	rVB5	984	1063	0.05%	0.007%
20	4.950	1201	1216	1267	rBV2	782255	2026880	100.00%	12.823%
21	5.275	1314	1317	1320	rBV4	498	405	0.02%	0.003%
22	5.368	1342	1346	1347	rBV2	503	339	0.02%	0.002%
23	5.404	1355	1357	1361	rVB4	610	339	0.02%	0.002%
24	5.529	1385	1396	1433	rBV	762449	1592866	78.59%	10.077%
25	5.825	1477	1488	1525	rVB3	40020	96760	4.77%	0.612%
26	5.986	1525	1538	1571	rBV	454882	963604	47.54%	6.096%
27	6.564	1714	1718	1721	rBV3	502	445	0.02%	0.003%
28	6.603	1726	1730	1732	rBV2	541	513	0.03%	0.003%
29	6.664	1745	1749	1751	rBV	411	336	0.02%	0.002%
30	6.912	1816	1826	1858	rBV	208978	415045	20.48%	2.626%
31	7.182	1907	1910	1916	rBV4	819	702	0.03%	0.004%
32	7.239	1916	1928	1961	rBV	855809	1517613	74.87%	9.601%
33	7.551	2016	2025	2047	rBV	137188	260525	12.85%	1.648%
34	7.760	2088	2090	2094	rVB5	483	392	0.02%	0.002%
35	7.876	2117	2126	2134	rBV	9911	16510	0.81%	0.104%
36	7.953	2147	2150	2153	rBV4	714	354	0.02%	0.002%

Data Path : Z:\voasrv\HPCHEM1\MSVOA_V\Data\VV053024\
 Data File : VV035895.D
 Acq On : 30 May 2024 15:15
 Operator : SY/MD
 Sample : P2632-14
 Misc : 3.76g/10.0mL/MSVOA_V/SOIL/B
 ALS Vial : 18 Sample Multiplier: 1

Instrument :
 MSVOA_V
 ClientSampleId :
 BHBYO

Integration Parameters: LSCINT.P

Integrator: RTE
 Smoothing : OFF
 Sampling : 1
 Start Thrs: 0.2
 Stop Thrs : 0

Filtering: 5
 Min Area: 0 % of largest Peak
 Max Peaks: 100
 Peak Location: TOP

If leading or trailing edge < 100 prefer < Baseline drop else tangent >
 Peak separation: 5

Method : Z:\voasrv\HPCHEM1\MSVOA_V\Method\SFAMVLM053024SMA.M
 Title : VOC Analysis

37	7.992	2159	2162	2165	rBV4	532	385	0.02%	0.002%
38	8.030	2165	2174	2212	rBV	175367	419134	20.68%	2.652%
39	8.362	2268	2277	2289	rBV2	16384	29431	1.45%	0.186%
40	8.445	2300	2303	2306	rVB3	938	589	0.03%	0.004%
41	8.574	2341	2343	2346	rVB3	960	461	0.02%	0.003%
42	8.606	2346	2353	2357	rVB5	772	954	0.05%	0.006%
43	8.657	2365	2369	2373	rVB3	443	349	0.02%	0.002%
44	8.722	2386	2389	2393	rBV3	357	311	0.02%	0.002%
45	8.780	2396	2407	2442	rBV	1152348	1927230	95.08%	12.193%
46	9.082	2497	2501	2502	rBV3	599	483	0.02%	0.003%
47	9.204	2537	2539	2544	rVB5	494	330	0.02%	0.002%
48	9.281	2556	2563	2566	rBV3	430	629	0.03%	0.004%
49	9.407	2599	2602	2604	rVB	484	317	0.02%	0.002%
50	9.429	2604	2609	2613	rBV3	587	541	0.03%	0.003%
51	9.487	2622	2627	2628	rBV4	905	758	0.04%	0.005%
52	9.503	2630	2632	2636	rVV3	932	648	0.03%	0.004%
53	9.522	2636	2638	2640	rVV2	642	312	0.02%	0.002%
54	9.548	2640	2646	2649	rVV4	850	1043	0.05%	0.007%
55	9.612	2663	2666	2670	rVB3	416	316	0.02%	0.002%
56	9.870	2740	2746	2751	rBV4	1188	1514	0.07%	0.010%
57	10.066	2800	2807	2812	rBV4	1421	2009	0.10%	0.013%
58	10.149	2818	2833	2858	rBV	406498	657491	32.44%	4.160%
59	10.323	2877	2887	2899	rVB	23143	37301	1.84%	0.236%
60	10.477	2930	2935	2936	rBV2	1024	801	0.04%	0.005%
61	10.587	2965	2969	2971	rVB4	509	335	0.02%	0.002%
62	10.661	2987	2992	2995	rBV3	810	607	0.03%	0.004%
63	10.680	2995	2998	3003	rVB3	510	422	0.02%	0.003%
64	10.744	3013	3018	3024	rBV4	1093	1432	0.07%	0.009%
65	10.853	3044	3052	3067	rVB7	3464	6164	0.30%	0.039%
66	10.972	3080	3089	3096	rVB7	1317	2021	0.10%	0.013%
67	11.082	3113	3123	3131	rBV5	5734	9384	0.46%	0.059%
68	11.130	3131	3138	3143	rBV5	2663	3241	0.16%	0.021%
69	11.181	3143	3154	3188	rBV	1052144	1633755	80.60%	10.336%
70	11.506	3252	3255	3258	rBV5	523	379	0.02%	0.002%
71	11.558	3259	3271	3295	rBV	846732	1346725	66.44%	8.520%
72	11.841	3354	3359	3364	rVB4	868	913	0.05%	0.006%
73	11.918	3380	3383	3387	rBV4	842	660	0.03%	0.004%
74	12.001	3406	3409	3414	rVB3	405	382	0.02%	0.002%
75	12.027	3414	3417	3420	rBV4	545	410	0.02%	0.003%
76	12.191	3459	3468	3479	rBV	11107	17448	0.86%	0.110%

Data Path : Z:\voasrv\HPCHEM1\MSVOA_V\Data\VV053024\
 Data File : VV035895.D
 Acq On : 30 May 2024 15:15
 Operator : SY/MD
 Sample : P2632-14
 Misc : 3.76g/10.0mL/MSVOA_V/SOIL/B
 ALS Vial : 18 Sample Multiplier: 1

Instrument :
 MSVOA_V
 ClientSampleId :
 BHBV0

Integration Parameters: LSCINT.P

Integrator: RTE
 Smoothing : OFF Filtering: 5
 Sampling : 1 Min Area: 0 % of largest Peak
 Start Thrs: 0.2 Max Peaks: 100
 Stop Thrs : 0 Peak Location: TOP

If leading or trailing edge < 100 prefer < Baseline drop else tangent >
 Peak separation: 5

Method : Z:\voasrv\HPCHEM1\MSVOA_V\Method\SFAMVLM053024SMA.M
 Title : VOC Analysis

77	12.390	3526	3530	3532	rBV2	608	407	0.02%	0.003%
78	12.677	3615	3619	3622	rBV4	823	645	0.03%	0.004%
79	12.783	3647	3652	3654	rBV2	625	422	0.02%	0.003%
80	12.831	3656	3667	3675	rVB8	2838	4568	0.23%	0.029%
81	13.027	3726	3728	3732	rBV4	440	359	0.02%	0.002%
82	13.075	3737	3743	3749	rVB6	1540	2070	0.10%	0.013%
83	13.146	3763	3765	3772	rBV3	436	601	0.03%	0.004%
84	13.207	3778	3784	3792	rBV7	1385	2324	0.11%	0.015%
85	13.287	3807	3809	3814	rVV3	563	413	0.02%	0.003%
86	13.316	3814	3818	3820	rVV2	755	541	0.03%	0.003%
87	13.606	3905	3908	3911	rBV	554	531	0.03%	0.003%
88	13.651	3918	3922	3923	rBV2	675	441	0.02%	0.003%
89	13.683	3923	3932	3942	rVB	30255	44419	2.19%	0.281%
90	13.770	3955	3959	3965	rVB4	878	740	0.04%	0.005%
91	13.799	3965	3968	3970	rBV4	457	395	0.02%	0.002%
92	13.847	3978	3983	3987	rBV6	859	825	0.04%	0.005%
93	13.979	4018	4024	4038	rVV	2849	5342	0.26%	0.034%
94	14.078	4050	4055	4056	rBV4	933	676	0.03%	0.004%
95	14.313	4123	4128	4130	rBV4	970	851	0.04%	0.005%
96	14.516	4186	4191	4193	rBV3	527	519	0.03%	0.003%
97	14.586	4210	4213	4219	rBV5	640	647	0.03%	0.004%
98	14.779	4270	4273	4274	rBV4	1050	664	0.03%	0.004%
99	15.072	4362	4364	4370	rVB3	672	500	0.02%	0.003%
100	15.490	4492	4494	4497	rBV3	753	483	0.02%	0.003%

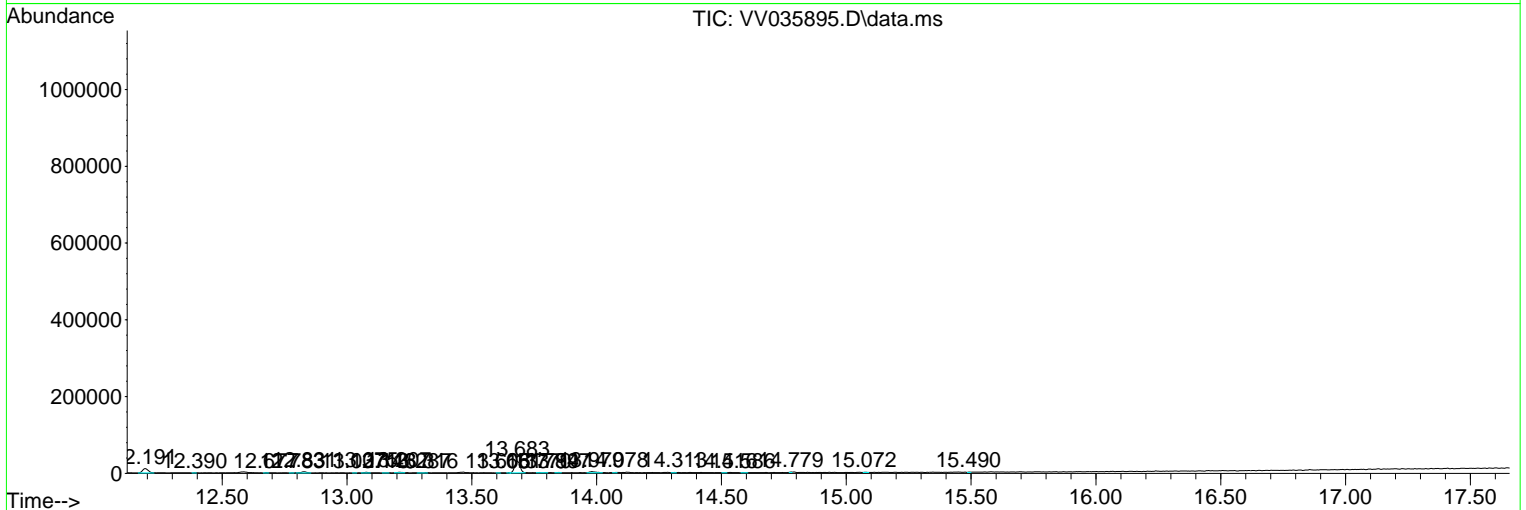
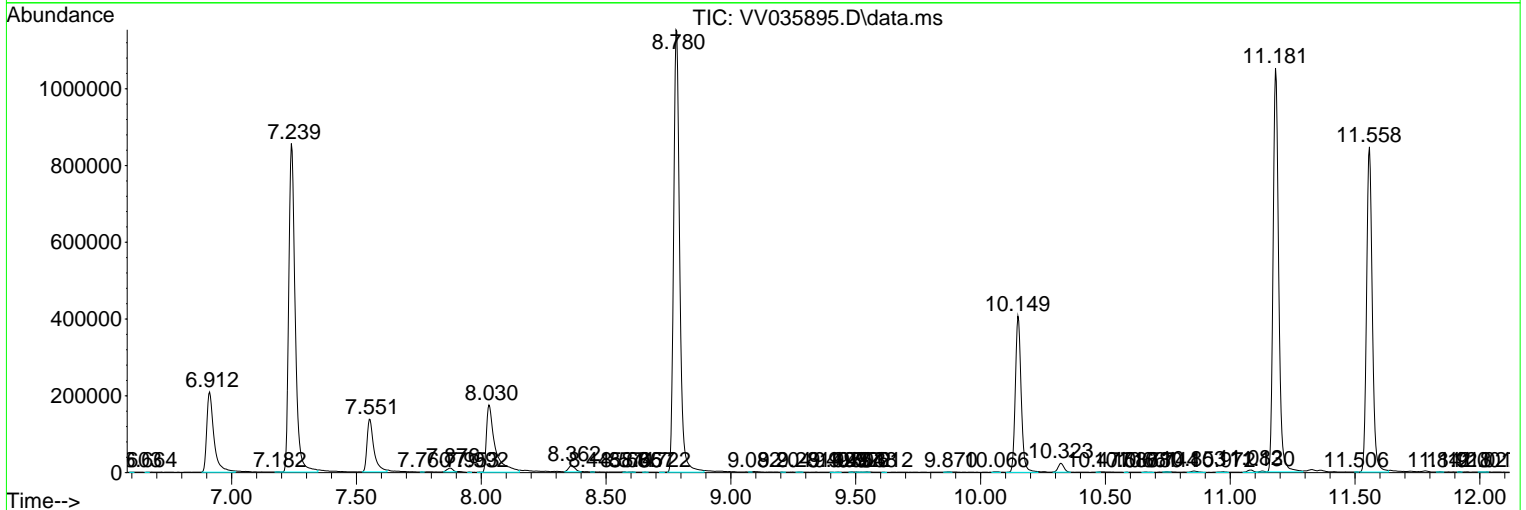
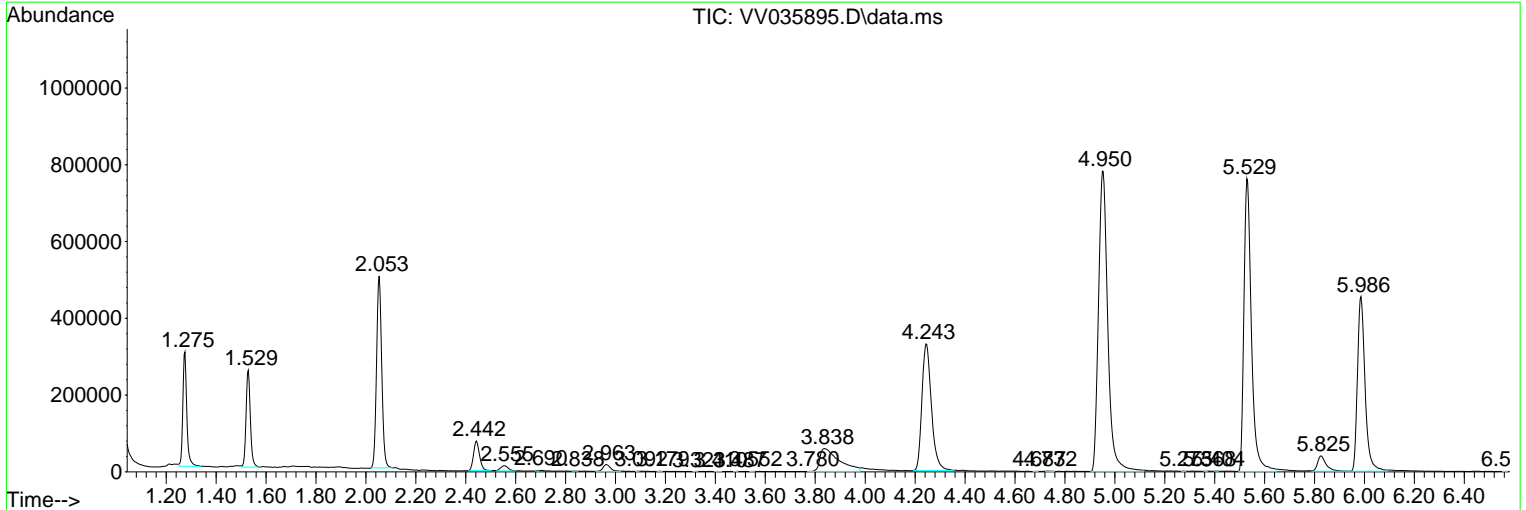
Sum of corrected areas: 15806469

Data Path : Z:\voasrv\HPCHEM1\MSVOA_V\Data\VV053024\
 Data File : VV035895.D
 Acq On : 30 May 2024 15:15
 Operator : SY/MD
 Sample : P2632-14
 Misc : 3.76g/10.0mL/MSVOA_V/SOIL/B
 ALS Vial : 18 Sample Multiplier: 1

Instrument :
 MSVOA_V
ClientSampleId :
 BHY0

Quant Method : Z:\voasrv\HPCHEM1\MSVOA_V\Method\SFAMVLM053024SMA.M
 Quant Title : VOC Analysis

TIC Library : C:\Database\NIST20.L
 TIC Integration Parameters: LSCINT.P



Library Search Compound Report

Data Path : Z:\voasrv\HPCHEM1\MSVOA_V\Data\VV053024\
Data File : VV035895.D
Acq On : 30 May 2024 15:15
Operator : SY/MD
Sample : P2632-14
Misc : 3.76g/10.0mL/MSVOA_V/SOIL/B
ALS Vial : 18 Sample Multiplier: 1

Instrument :
MSVOA_V
ClientSampleId :
BHY0

Quant Method : Z:\voasrv\HPCHEM1\MSVOA_V\Method\SFAMVLM053024SMA.M
Quant Title : VOC Analysis

TIC Library : C:\Database\NIST20.L
TIC Integration Parameters: LSCINT.P

No Library Search Compounds Detected

Data Path : Z:\voasrv\HPCHEM1\MSVOA_V\Data\VV053024\
Data File : VV035895.D
Acq On : 30 May 2024 15:15
Operator : SY/MD
Sample : P2632-14
Misc : 3.76g/10.0mL/MSVOA_V/SOIL/B
ALS Vial : 18 Sample Multiplier: 1

Instrument :
MSVOA_V
ClientSampleId :
BHY0

Quant Method : Z:\voasrv\HPCHEM1\MSVOA_V\Method\SFAMVLM053024SMA.M
Quant Title : VOC Analysis

TIC Library : C:\Database\NIST0.L
TIC Integration Parameters: LSCINT.P

TIC Top Hit name	RT	EstConc	Units	Response	--Internal Standard--		
					#	RT	Resp Conc
