

Data Path : Z:\VOASRV\HPCHEM1\MSVOA V\DATA\VV060120\
 Data File : VV016414.D
 Acq On : 01 Jun 2020 16:33
 Operator : SY/MD
 Sample : L2780-05
 Misc : 25.0mL/MSVOA V/WATER
 ALS Vial : 19 Sample Multiplier: 1

Instrument :
 MSVOA_V
ClientSampled :
 COAM1

Manual Integrations
APPROVED
 MMDadoda
 6/2/2020 4:49:27 PM

Quant Time: Jun 02 04:08:56 2020
 Quant Method : Z:\VOASRV\HPCHEM1\MSVOA_V\METHOD\SOMVTR053020WMA.M
 Quant Title : TRACE VOA SOM01.0
 QLast Update : Tue Jun 02 01:13:11 2020
 Response via : Initial Calibration

Internal Standards	R.T.	QIon	Response	Conc	Units	Dev(Min)
1) 1,4-Difluorobenzene	5.64	114	89290	5.00	ug/L	0.00
28) Chlorobenzene-d5	8.87	117	84306	5.00	ug/L	0.00
61) 1,4-Dichlorobenzene-d4	11.27	152	36748	5.00	ug/L	0.00

System Monitoring Compounds

4) Vinyl Chloride-d3	1.31	65	27490	3.52	ug/L	0.00
Spiked Amount	5.000	Range	40 - 130	Recovery	=	70.40%
7) Chloroethane-d5	1.58	69	22834	3.84	ug/L	0.00
Spiked Amount	5.000	Range	65 - 130	Recovery	=	76.80%
11) 1,1-Dichloroethene-d2	2.12	63	40061	2.93	ug/L	0.00
Spiked Amount	5.000	Range	60 - 125	Recovery	=	58.60%#
20) 2-Butanone-d5	3.95	46	78633	46.62	ug/L	0.02
Spiked Amount	50.000	Range	40 - 130	Recovery	=	93.24%
24) Chloroform-d	4.37	84	55330	4.18	ug/L	0.00
Spiked Amount	5.000	Range	70 - 125	Recovery	=	83.60%
26) 1,2-Dichloroethane-d4	5.06	65	31199	4.53	ug/L	0.00
Spiked Amount	5.000	Range	70 - 130	Recovery	=	90.60%
32) Benzene-d6	5.07	84	108094	4.51	ug/L	0.00
Spiked Amount	5.000	Range	70 - 125	Recovery	=	90.20%
36) 1,2-Dichloropropane-d6	6.09	67	34090	4.61	ug/L	0.00
Spiked Amount	5.000	Range	60 - 140	Recovery	=	92.20%
41) Toluene-d8	7.33	98	92229	4.21	ug/L	0.00
Spiked Amount	5.000	Range	70 - 130	Recovery	=	84.20%
45) trans-1,3-Dichloropropene-	7.64	79	10011	3.75	ug/L	0.00
Spiked Amount	5.000	Range	55 - 130	Recovery	=	75.00%
48) 2-Hexanone-d5	8.11	63	64374	51.86	ug/L	0.00
Spiked Amount	50.000	Range	45 - 130	Recovery	=	103.72%
59) 1,1,2,2-Tetrachloroethane-	10.24	84	23838	4.56	ug/L	0.00
Spiked Amount	5.000	Range	65 - 120	Recovery	=	91.20%
65) 1,2-Dichlorobenzene-d4	11.65	152	31343	4.59	ug/L	0.00
Spiked Amount	5.000	Range	80 - 120	Recovery	=	91.80%

Target Compounds					Ovalue
3) Chloromethane	1.25	50	928	0.104 ug/L	88
13) Acetone	2.25	43	13399m	11.810 ug/L	

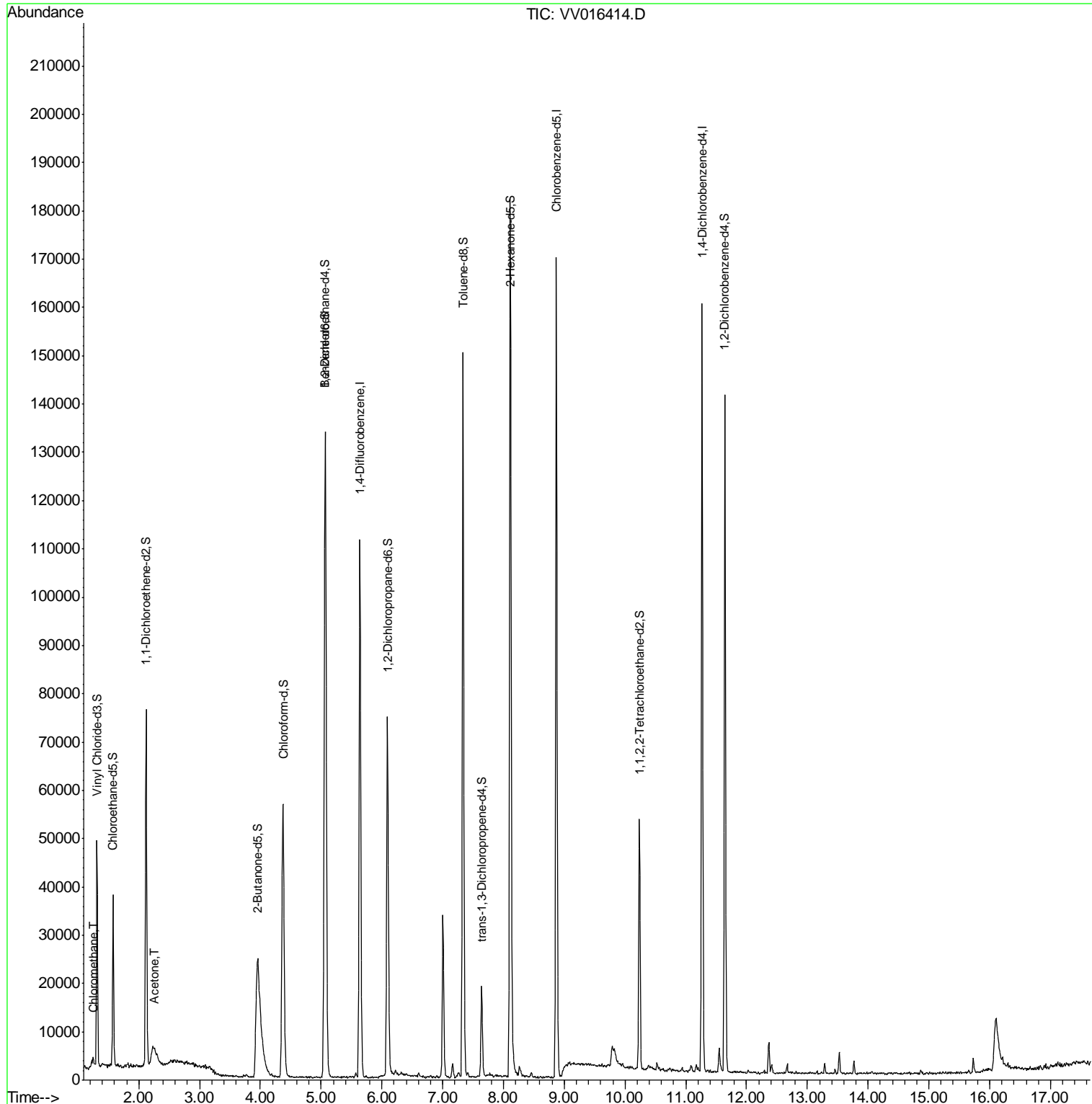
(#) = qualifier out of range (m) = manual integration (+) = signals summed

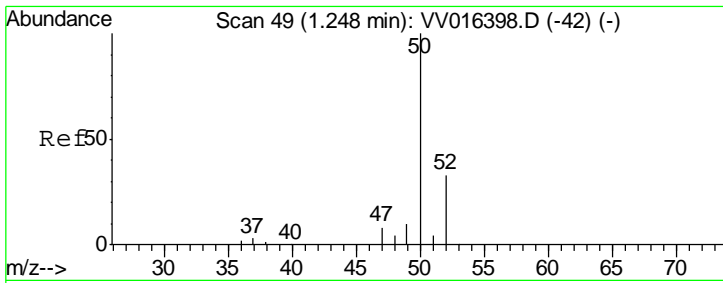
Data Path : Z:\VOASRV\HPCHEM1\MSVOA V\DATA\VV060120\
 Data File : VV016414.D
 Acq On : 01 Jun 2020 16:33
 Operator : SY/MD
 Sample : L2780-05
 Misc : 25.0mL/MSVOA V/WATER
 ALS Vial : 19 Sample Multiplier: 1

Instrument :
 MSVOA_V
 Client Sampled :
 C0AM1

Manual Integrations
APPROVED
 MMDadoda
 6/2/2020 4:49:27 PM

Quant Time: Jun 02 04:08:56 2020
 Quant Method : Z:\VOASRV\HPCHEM1\MSVOA_V\METHOD\SOMVTR053020WMA.M
 Quant Title : TRACE VOA SOM01.0
 QLast Update : Tue Jun 02 01:13:11 2020
 Response via : Initial Calibration



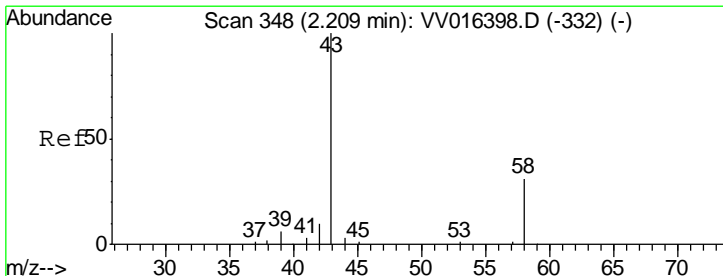
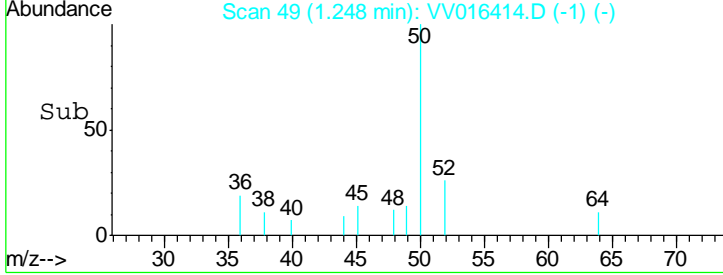
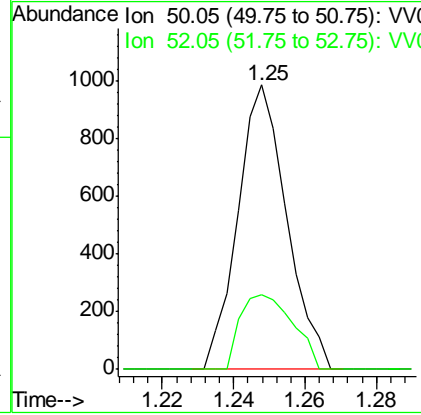
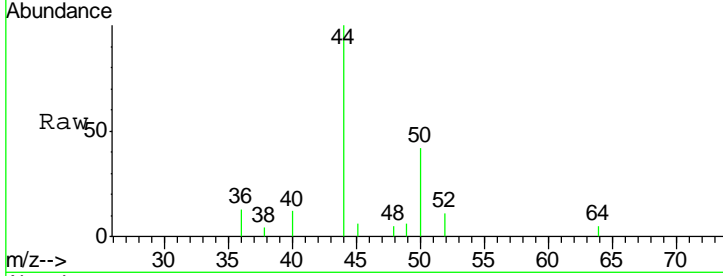


#3
 Chloromethane
 Concen: 0.104 ug/L
 RT: 1.25 min Scan# 49
 Delta R.T. 0.00 min
 Lab File: VV016414.D
 Acq: 01 Jun 2020 16:33

Instrument : MSVOA_V
 ClientSampled : C0AM1

Tgt Ion	Resp	Lower	Upper
50	100		
52	26.1	23.1	42.9

Manual Integrations
APPROVED
 MMDadoda
 6/2/2020 4:49:27 PM



#13
 Acetone
 Concen: 11.810 ug/L m
 RT: 2.25 min Scan# 362
 Delta R.T. 0.05 min
 Lab File: VV016414.D
 Acq: 01 Jun 2020 16:33

Tgt Ion	Resp	Lower	Upper
43	100		
58	17.2	0.0	59.2

