

Data Path : Z:\VOASRV\HPCHEM1\MSVOA V\DATA\VV060519\
 Data File : VV011227.D
 Acq On : 05 Jun 2019 14:07
 Operator : SY/MD
 Sample : K3197-15
 Misc : 25ML/MSVOA V/WATER
 ALS Vial : 1 Sample Multiplier: 1

Instrument :
 MSVOA_V
 ClientSampleId :
 F9P71

Quant Time: Jun 06 06:32:20 2019
 Quant Method : Z:\VOASRV\HPCHEM1\MSVOA_V\METHOD\SOMVTR060419WMA.M
 Quant Title : TRACE VOA SOM01.0
 QLast Update : Thu Jun 06 05:43:55 2019
 Response via : Initial Calibration

Internal Standards	R.T.	QIon	Response	Conc	Units	Dev(Min)
1) 1,4-Difluorobenzene	5.66	114	174133	5.00	ug/L	0.00
28) Chlorobenzene-d5	8.89	117	158560	5.00	ug/L	0.00
60) 1,4-Dichlorobenzene-d4	11.30	152	65540	5.00	ug/L	0.00

System Monitoring Compounds

4) Vinyl Chloride-d3	1.32	65	20803	1.58	ug/L	0.00
Spiked Amount	5.000	Range	40 - 130	Recovery	=	31.60%#
7) Chloroethane-d5	1.58	69	17256	1.57	ug/L	0.02
Spiked Amount	5.000	Range	65 - 130	Recovery	=	31.40%#
11) 1,1-Dichloroethene-d2	2.12	63	33542	1.27	ug/L	0.00
Spiked Amount	5.000	Range	60 - 125	Recovery	=	25.40%#
20) 2-Butanone-d5	3.96	46	43011	14.48	ug/L	0.03
Spiked Amount	50.000	Range	40 - 130	Recovery	=	28.96%#
24) Chloroform-d	4.40	84	36168	1.56	ug/L	0.00
Spiked Amount	5.000	Range	70 - 125	Recovery	=	31.20%#
26) 1,2-Dichloroethane-d4	5.08	65	20001	1.59	ug/L	0.00
Spiked Amount	5.000	Range	70 - 130	Recovery	=	31.80%#
32) Benzene-d6	5.09	84	75780	1.60	ug/L	0.00
Spiked Amount	5.000	Range	70 - 125	Recovery	=	32.00%#
36) 1,2-Dichloropropane-d6	6.12	67	23130	1.58	ug/L	0.00
Spiked Amount	5.000	Range	60 - 140	Recovery	=	31.60%#
41) Toluene-d8	7.36	98	68609	1.57	ug/L	0.00
Spiked Amount	5.000	Range	70 - 130	Recovery	=	31.40%#
43) trans-1,3-Dichloropropene-	7.66	79	7265	1.30	ug/L	0.00
Spiked Amount	5.000	Range	55 - 130	Recovery	=	26.00%#
46) 2-Hexanone-d5	8.14	63	33907	14.41	ug/L	0.00
Spiked Amount	50.000	Range	45 - 130	Recovery	=	28.82%#
57) 1,1,2,2-Tetrachloroethane-	10.26	84	14981	1.50	ug/L	0.00
Spiked Amount	5.000	Range	65 - 120	Recovery	=	30.00%#
64) 1,2-Dichlorobenzene-d4	11.67	152	21458	1.66	ug/L	0.00
Spiked Amount	5.000	Range	80 - 120	Recovery	=	33.20%#

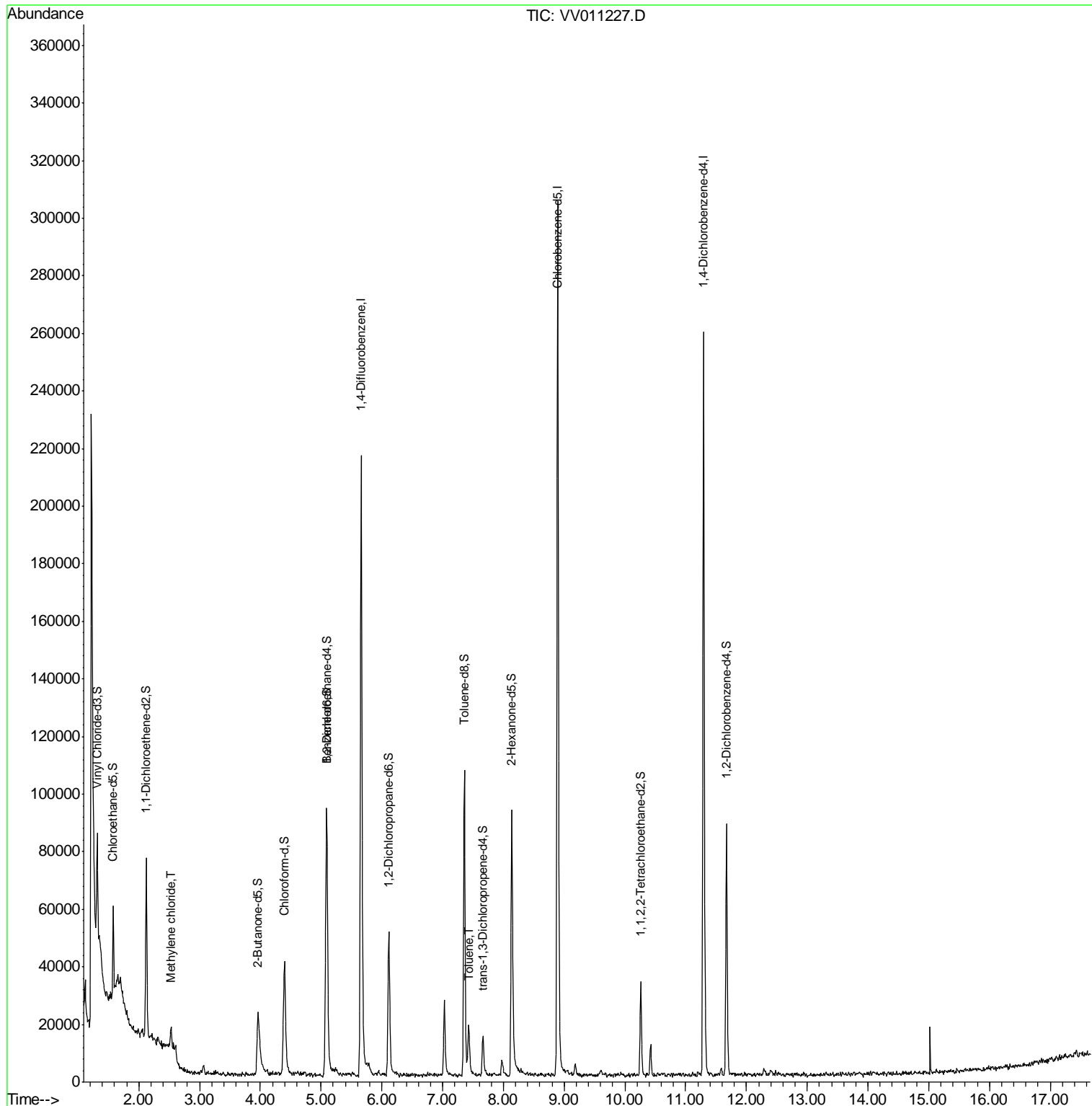
Target Compounds					Ovalue
16) Methylene chloride	2.53	84	2775	0.245 ug/L	94
42) Toluene	7.43	91	10879	0.202 ug/L	95

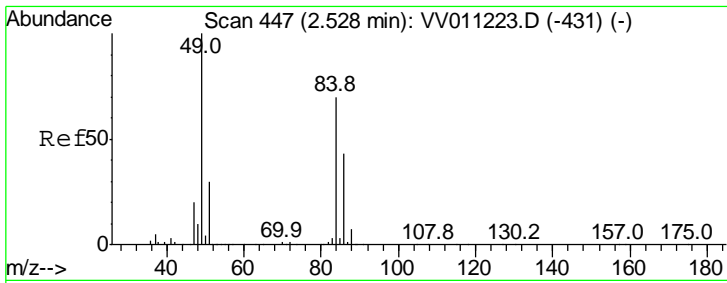
(#) = qualifier out of range (m) = manual integration (+) = signals summed

Data Path : Z:\VOASRV\HPCHEM1\MSVOA V\DATA\VV060519\
 Data File : VV011227.D
 Acq On : 05 Jun 2019 14:07
 Operator : SY/MD
 Sample : K3197-15
 Misc : 25ML/MSVOA V/WATER
 ALS Vial : 1 Sample Multiplier: 1

Instrument :
 MSVOA_V
 Client Sampled :
 F9P71

Quant Time: Jun 06 06:32:20 2019
 Quant Method : Z:\VOASRV\HPCHEM1\MSVOA_V\METHOD\SOMVTR060419WMA.M
 Quant Title : TRACE VOA SOM01.0
 QLast Update : Thu Jun 06 05:43:55 2019
 Response via : Initial Calibration

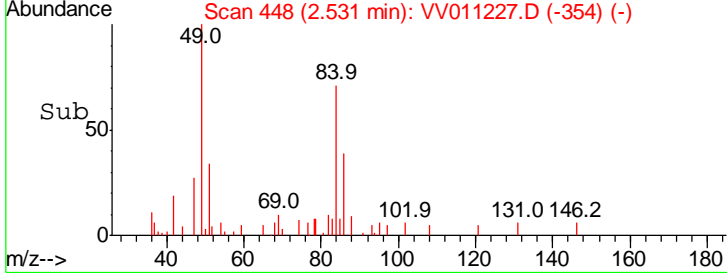
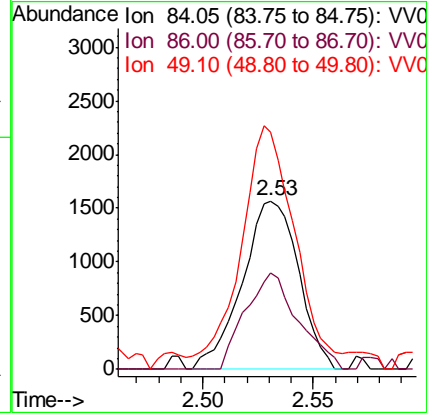
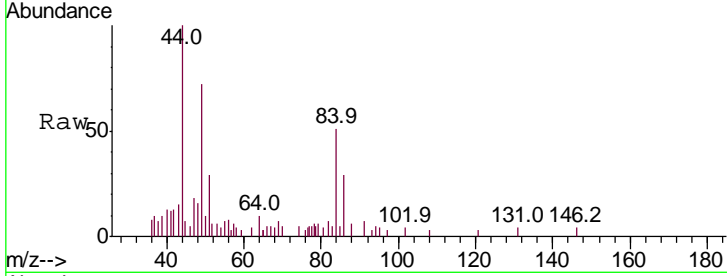




#16
 Methylene chloride
 Concen: 0.245 ug/L
 RT: 2.53 min Scan# 448
 Delta R.T. 0.00 min
 Lab File: VV011227.D
 Acq: 05 Jun 2019 14:07

Instrument : MSVOA_V
 ClientSampled : F9P71

Tgt Ion	Resp	Lower	Upper
84	100		
86	57.2	44.9	83.3
49	140.7	102.1	189.5



#42
 Toluene
 Concen: 0.202 ug/L
 RT: 7.43 min Scan# 1972
 Delta R.T. 0.00 min
 Lab File: VV011227.D
 Acq: 05 Jun 2019 14:07

Tgt Ion	Resp	Lower	Upper
91	100		
92	53.7	39.9	74.1

