

Data Path : Z:\voasrv\HPCHEM1\MSVOA\_V\Data\VW060724\  
 Data File : VW036010.D  
 Acq On : 07 Jun 2024 15:14  
 Operator : SY/MD  
 Sample : P2754-17  
 Misc : 5.60g/10.0mL/MSVOA\_V/SOIL/A  
 ALS Vial : 11 Sample Multiplier: 1

**Instrument :**  
 MSVOA\_V  
**ClientSampleId :**

Quant Time: Jun 08 00:32:43 2024  
 Quant Method : Z:\voasrv\HPCHEM1\MSVOA\_V\Method\SFAMVLM053024SMA.M  
 Quant Title : VOC Analysis  
 QLast Update : Sat Jun 08 00:30:25 2024  
 Response via : Initial Calibration

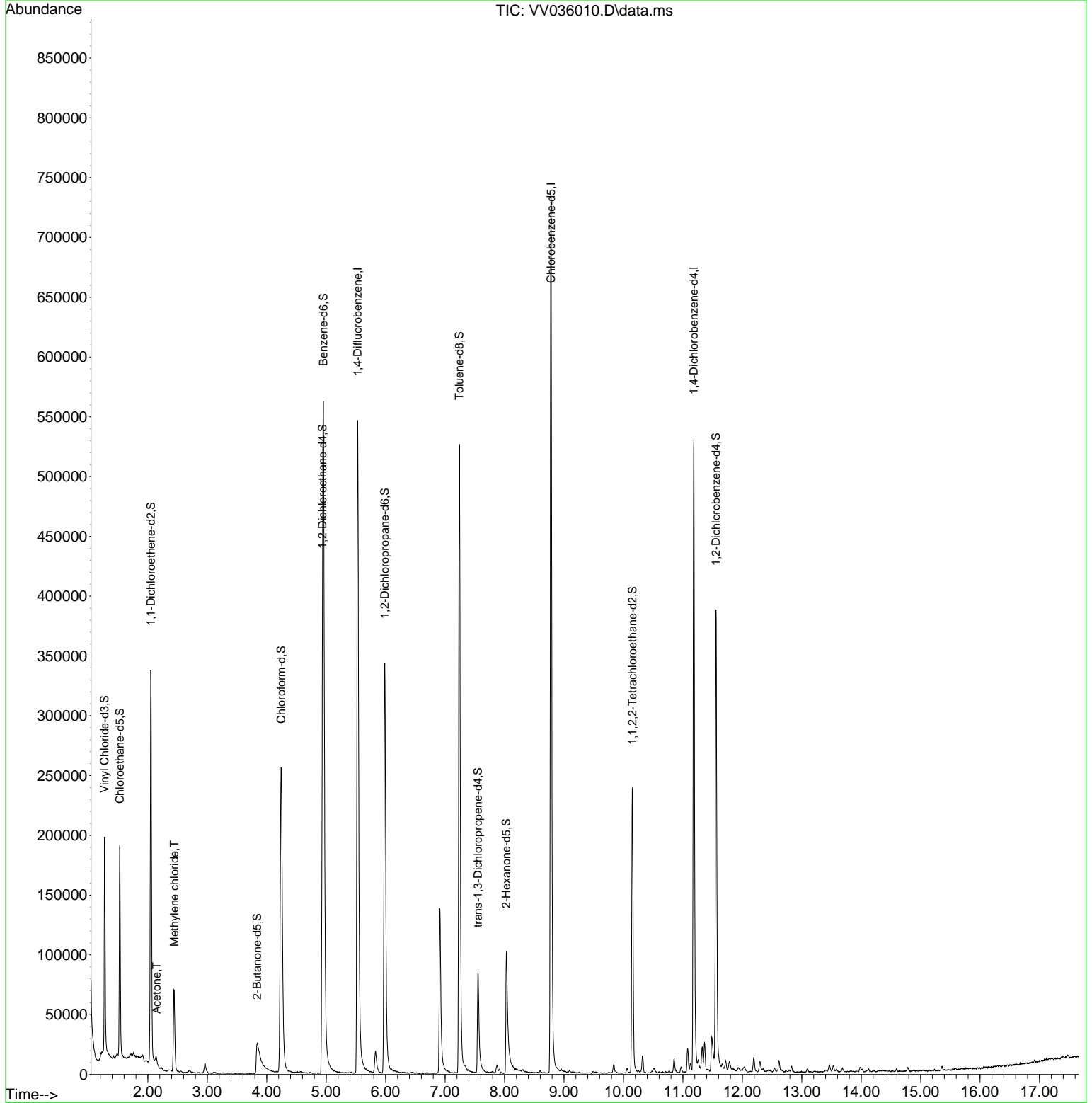
Compound	R.T.	QI on	Response	Conc	Units	Dev(Min)
<b>Internal Standards</b>						
1) 1,4-Difluorobenzene	5.529	114	470949	25.000	ug/L	0.00
28) Chlorobenzene-d5	8.783	117	416323	25.000	ug/L	0.00
58) 1,4-Dichlorobenzene-d4	11.185	152	143636	25.000	ug/L	0.00
<b>System Monitoring Compounds</b>						
4) Vinyl Chloride-d3	1.272	65	119279	13.776	ug/L	0.00
Spike Amount	25.000	Range	30 - 150	Recovery	=	55.120%
7) Chloroethane-d5	1.526	69	116235	16.836	ug/L	0.00
Spike Amount	25.000	Range	30 - 150	Recovery	=	67.360%
11) 1,1-Dichloroethane-d2	2.050	65	57879	15.016	ug/L	0.00
Spike Amount	25.000	Range	45 - 110	Recovery	=	60.080%
21) 2-Butanone-d5	3.838	46	65554	32.999	ug/L	0.00
Spike Amount	50.000	Range	20 - 135	Recovery	=	66.000%
24) Chloroform-d	4.243	84	285081	19.040	ug/L	0.00
Spike Amount	25.000	Range	40 - 150	Recovery	=	76.160%
26) 1,2-Dichloroethane-d4	4.937	65	152444	19.419	ug/L	0.00
Spike Amount	25.000	Range	70 - 130	Recovery	=	77.680%
32) Benzene-d6	4.953	84	500104	20.209	ug/L	0.00
Spike Amount	25.000	Range	20 - 135	Recovery	=	80.840%
36) 1,2-Dichloropropane-d6	5.985	67	179229	22.998	ug/L	0.00
Spike Amount	25.000	Range	70 - 120	Recovery	=	92.000%
41) Toluene-d8	7.239	98	371600	17.018	ug/L	0.00
Spike Amount	25.000	Range	30 - 130	Recovery	=	68.080%
43) trans-1,3-Dichloropropene	7.555	79	57230	17.910	ug/L	0.00
Spike Amount	25.000	Range	30 - 135	Recovery	=	71.640%
47) 2-Hexanone-d5	8.030	63	40676	38.524	ug/L	0.00
Spike Amount	50.000	Range	20 - 135	Recovery	=	77.040%
56) 1,1,2,2-Tetrachloroethane	10.152	84	120504	20.692	ug/L	0.00
Spike Amount	25.000	Range	45 - 120	Recovery	=	82.760%
66) 1,2-Dichlorobenzene-d4	11.558	152	100139	19.011	ug/L	0.00
Spike Amount	25.000	Range	75 - 120	Recovery	=	76.040%
<b>Target Compounds</b>						
13) Acetone	2.146	43	4769	1.541	ug/L #	38
16) Methylene chloride	2.442	84	29747	2.791	ug/L	97

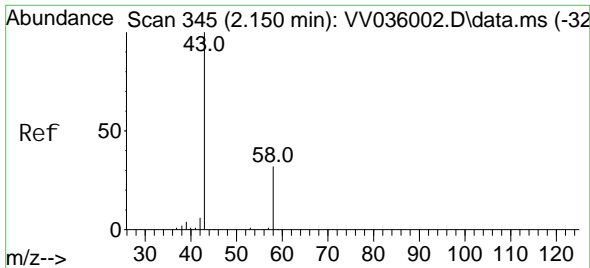
(#) = qualifier out of range (m) = manual integration (+) = signals summed

Data Path : Z:\voasrv\HPCHEM1\MSVOA\_V\Data\VV060724\  
Data File : VV036010.D  
Acq On : 07 Jun 2024 15:14  
Operator : SY/MD  
Sample : P2754-17  
Misc : 5.60g/10.0mL/MSVOA\_V/SOIL/A  
ALS Vial : 11 Sample Multiplier: 1

Instrument :  
MSVOA\_V  
ClientSampleId :

Quant Time: Jun 08 00:32:43 2024  
Quant Method : Z:\voasrv\HPCHEM1\MSVOA\_V\Method\SFAMVLM053024SMA.M  
Quant Title : VOC Analysis  
QLast Update : Sat Jun 08 00:30:25 2024  
Response via : Initial Calibration

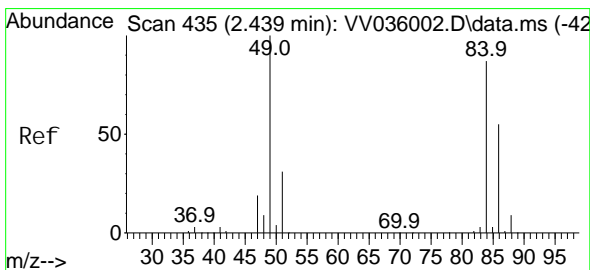
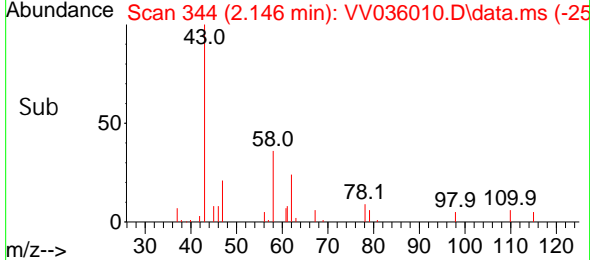
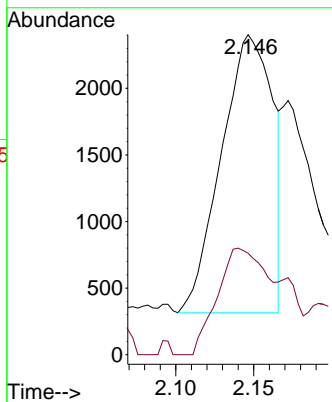
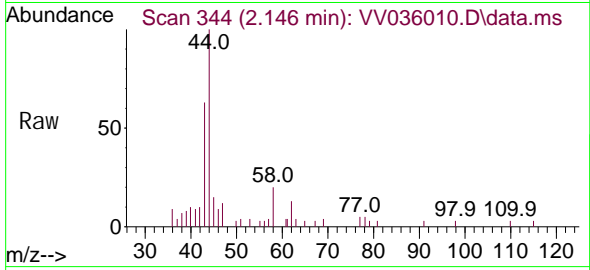




#13  
 Acetone  
 Concen: 1.541 ug/L  
 RT: 2.146 min Scan# 344  
 Delta R.T. -0.003 min  
 Lab File: VV036010.D  
 Acq: 07 Jun 2024 15:14

Instrument : MSVOA\_V  
 ClientSampleId :

Tgt Ion: 43 Resp: 4769  
 Ion Ratio Lower Upper  
 43 100  
 58 36.3 0.0 24.2#



#16  
 Methylene chloride  
 Concen: 2.791 ug/L  
 RT: 2.442 min Scan# 436  
 Delta R.T. 0.003 min  
 Lab File: VV036010.D  
 Acq: 07 Jun 2024 15:14

Tgt Ion: 84 Resp: 29747  
 Ion Ratio Lower Upper  
 84 100  
 86 66.7 44.6 82.8  
 49 117.9 81.1 150.5

