

Data Path : Z:\voasrv\HPCHEM1\MSVOA_V\Data\VW061324\
 Data File : VW036062.D
 Acq On : 13 Jun 2024 14:54
 Operator : SY/MD
 Sample : P2775-08
 Misc : 5.25g/10.0mL/MSVOA_V/SOIL/B
 ALS Vial : 17 Sample Multiplier: 1

Instrument :
 MSVOA_V
 ClientSampleId :

Quant Time: Jun 14 01:19:21 2024
 Quant Method : Z:\voasrv\HPCHEM1\MSVOA_V\Method\SFAMVLM053024SMA.M
 Quant Title : VOC Analysis
 QLast Update : Fri Jun 14 01:10:24 2024
 Response via : Initial Calibration

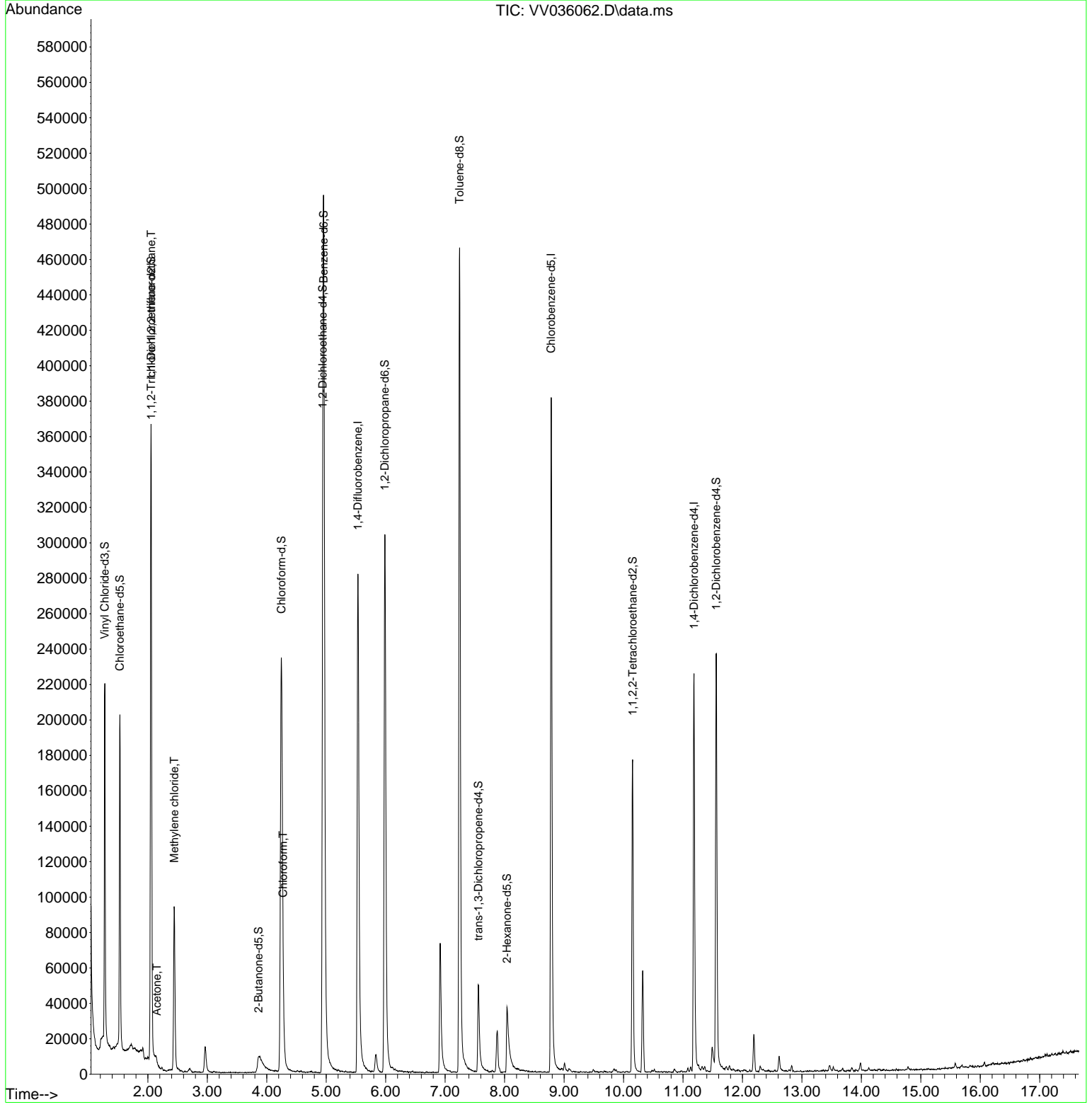
Compound	R.T.	QI on	Response	Conc	Units	Dev(Min)
Internal Standards						
1) 1,4-Difluorobenzene	5.532	114	254021	25.000	ug/L	0.00
28) Chlorobenzene-d5	8.783	117	223263	25.000	ug/L	0.00
58) 1,4-Dichlorobenzene-d4	11.185	152	60765	25.000	ug/L	0.00
System Monitoring Compounds						
4) Vinyl Chloride-d3	1.275	65	131958	28.255	ug/L	0.00
Spike Amount	25.000	Range	30 - 150	Recovery	=	113.040%
7) Chloroethane-d5	1.529	69	121949	32.748	ug/L	0.00
Spike Amount	25.000	Range	30 - 150	Recovery	=	131.000%
11) 1,1-Dichloroethane-d2	2.053	65	61646	29.651	ug/L	0.00
Spike Amount	25.000	Range	45 - 110	Recovery	=	118.600%#
21) 2-Butanone-d5	3.860	46	4425	4.130	ug/L	0.02
Spike Amount	50.000	Range	20 - 135	Recovery	=	8.260%#
24) Chloroform-d	4.246	84	261001	32.319	ug/L	0.00
Spike Amount	25.000	Range	40 - 150	Recovery	=	129.280%
26) 1,2-Dichloroethane-d4	4.940	65	123633	29.198	ug/L	0.00
Spike Amount	25.000	Range	70 - 130	Recovery	=	116.800%
32) Benzene-d6	4.957	84	453477	34.170	ug/L	0.00
Spike Amount	25.000	Range	20 - 135	Recovery	=	136.680%#
36) 1,2-Dichloropropane-d6	5.985	67	156007	37.329	ug/L	0.00
Spike Amount	25.000	Range	70 - 120	Recovery	=	149.320%#
41) Toluene-d8	7.243	98	328378	28.043	ug/L	0.00
Spike Amount	25.000	Range	30 - 130	Recovery	=	112.160%
43) trans-1,3-Dichloroprop...	7.558	79	33956	19.816	ug/L	0.00
Spike Amount	25.000	Range	30 - 135	Recovery	=	79.280%
47) 2-Hexanone-d5	8.040	63	12810	22.623	ug/L	0.00
Spike Amount	50.000	Range	20 - 135	Recovery	=	45.240%
56) 1,1,2,2-Tetrachloroeth...	10.152	84	90238	28.894	ug/L	0.00
Spike Amount	25.000	Range	45 - 120	Recovery	=	115.560%
66) 1,2-Dichlorobenzene-d4	11.558	152	65566	29.424	ug/L	0.00
Spike Amount	25.000	Range	75 - 120	Recovery	=	117.680%
Target Compounds						
10) 1,1,2-Trichloro-1,2,2-...	2.056	101	2016	0.462	ug/L #	39
13) Acetone	2.150	43	2254	1.350	ug/L	86
16) Methylene chloride	2.442	84	40410	7.030	ug/L	100
25) Chloroform	4.275	83	5820	0.688	ug/L	90

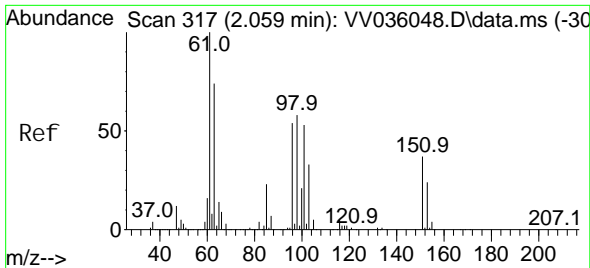
(#) = qualifier out of range (m) = manual integration (+) = signals summed

Data Path : Z:\voasrv\HPCHEM1\MSVOA_V\Data\VV061324\
 Data File : VV036062.D
 Acq On : 13 Jun 2024 14:54
 Operator : SY/MD
 Sample : P2775-08
 Misc : 5.25g/10.0mL/MSVOA_V/SOIL/B
 ALS Vial : 17 Sample Multiplier: 1

Instrument :
 MSVOA_V
ClientSampleId :

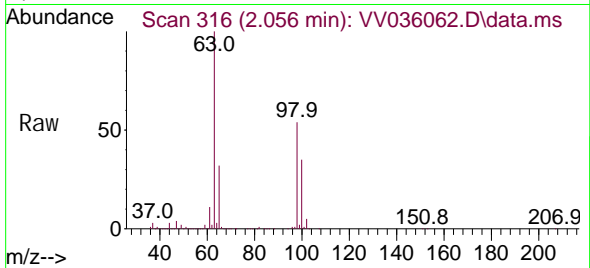
Quant Time: Jun 14 01:19:21 2024
 Quant Method : Z:\voasrv\HPCHEM1\MSVOA_V\Method\SFAMVLM053024SMA.M
 Quant Title : VOC Analysis
 QLast Update : Fri Jun 14 01:10:24 2024
 Response via : Initial Calibration



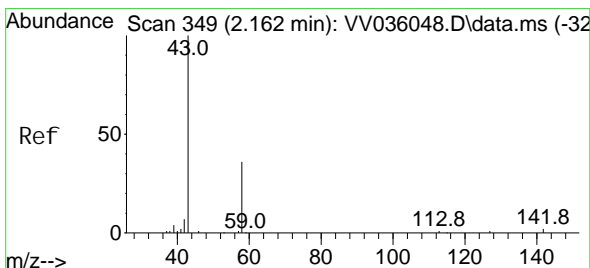
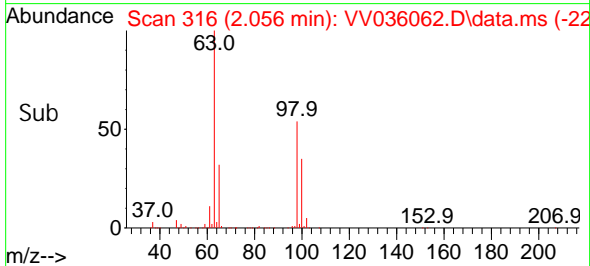
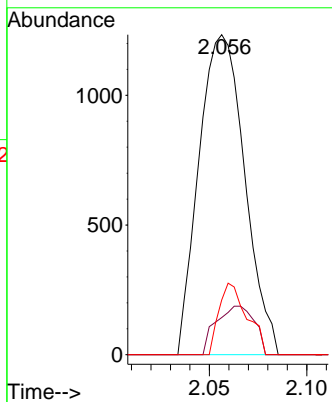


#10
 1, 1, 2-Tri chloro-1, 2, 2-tri fluoroethane
 Concen: 0.462 ug/L
 RT: 2.056 min Scan# 316
 Delta R.T. -0.003 min
 Lab File: VV036062.D
 Acq: 13 Jun 2024 14:54

Instrument : MSVOA_V
 ClientSampleId :

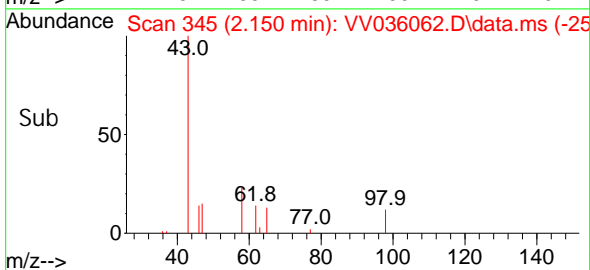
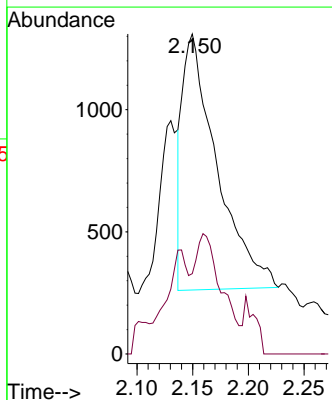
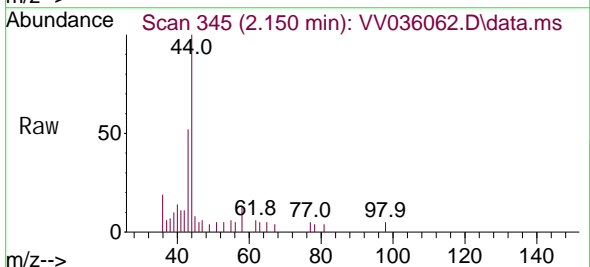


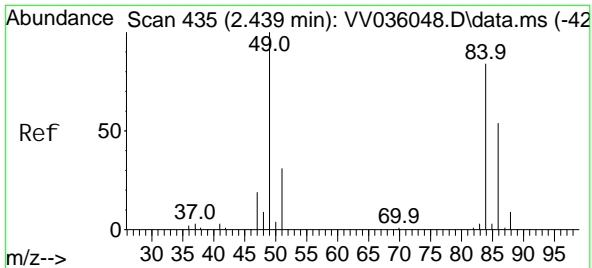
Tgt Ion: 101 Resp: 2016
 Ion Ratio Lower Upper
 101 100
 85 12.6 34.5 51.7#
 151 13.7 56.3 84.5#



#13
 Acetone
 Concen: 1.350 ug/L
 RT: 2.150 min Scan# 345
 Delta R.T. -0.013 min
 Lab File: VV036062.D
 Acq: 13 Jun 2024 14:54

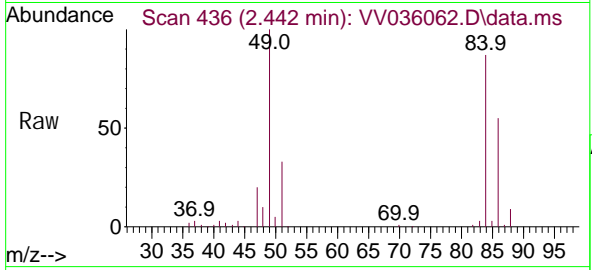
Tgt Ion: 43 Resp: 2254
 Ion Ratio Lower Upper
 43 100
 58 17.7 0.0 24.2





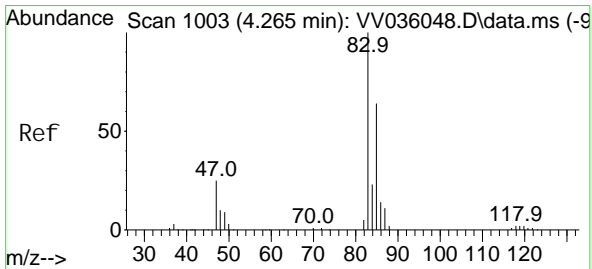
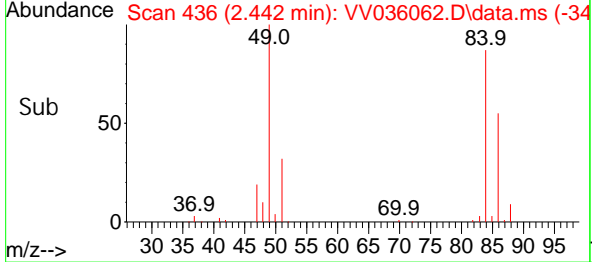
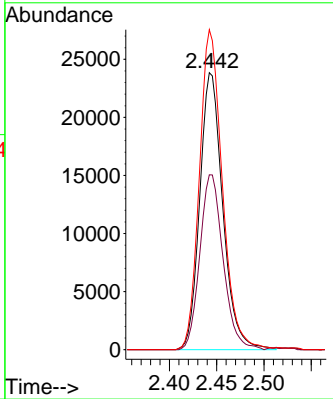
#16
 Methylene chloride
 Concen: 7.030 ug/L
 RT: 2.442 min Scan# 41
 Delta R.T. 0.003 min
 Lab File: VV036062.D
 Acq: 13 Jun 2024 14:54

Instrument : MSVOA_V
 ClientSampleId :



Tgt Ion: 84 Resp: 40410

Ion	Ratio	Lower	Upper
84	100		
86	63.1	44.6	82.8
49	115.5	81.1	150.5



#25
 Chloroform
 Concen: 0.688 ug/L
 RT: 4.275 min Scan# 1006
 Delta R.T. 0.010 min
 Lab File: VV036062.D
 Acq: 13 Jun 2024 14:54

Tgt Ion: 83 Resp: 5820

Ion	Ratio	Lower	Upper
83	100		
85	72.7	45.2	84.0

