

Data Path : Z:\voasrv\HPCHEM1\MSVOA_V\Data\VW061324\
 Data File : VW036055.D
 Acq On : 13 Jun 2024 12:14
 Operator : SY/MD
 Sample : P2850-12
 Misc : 6.03g/10.0mL/MSVOA_V/SOIL/A
 ALS Vial : 10 Sample Multiplier: 1

Instrument :
 MSVOA_V
 ClientSampleId :
 BHB55

Integration Parameters: LSCINT.P

Integrator: RTE
 Smoothing : OFF
 Sampling : 1
 Start Thrs: 0.2
 Stop Thrs : 0

Filtering: 5
 Min Area: 0 % of largest Peak
 Max Peaks: 100
 Peak Location: TOP

If leading or trailing edge < 100 prefer < Baseline drop else tangent >
 Peak separation: 5

Method : Z:\voasrv\HPCHEM1\MSVOA_V\Method\SFAMVLM053024SMA.M
 Title : VOC Analysis

Signal : TIC: VW036055.D\data.ms

peak #	R.T. min	first scan	max scan	last scan	PK TY	peak height	corr. area	corr. % max.	% of total
1	1.272	66	72	92	rVB	249561	276195	19.06%	2.109%
2	1.526	144	151	167	rVB	187143	226790	15.65%	1.731%
3	2.053	305	315	333	rBV	401337	590630	40.76%	4.509%
4	2.442	424	436	457	rBV	131539	222431	15.35%	1.698%
5	2.590	479	482	484	rBV2	384	247	0.02%	0.002%
6	2.693	505	514	517	rVV5	1247	1845	0.13%	0.014%
7	2.741	527	529	532	rVB3	701	392	0.03%	0.003%
8	2.789	541	544	547	rVB2	571	342	0.02%	0.003%
9	2.960	585	597	619	rBV2	16467	35427	2.44%	0.270%
10	3.259	684	690	691	rBV	378	236	0.02%	0.002%
11	3.600	794	796	800	rVV3	364	252	0.02%	0.002%
12	3.812	848	862	918	rBV2	308242	896714	61.89%	6.846%
13	4.243	981	996	1023	rBV	226356	597154	41.21%	4.559%
14	4.561	1093	1095	1099	rVB3	546	289	0.02%	0.002%
15	4.584	1099	1102	1105	rBV3	557	398	0.03%	0.003%
16	4.732	1146	1148	1152	rVB3	539	361	0.02%	0.003%
17	4.777	1157	1162	1165	rBV3	380	281	0.02%	0.002%
18	4.834	1176	1180	1185	rVB3	488	503	0.03%	0.004%
19	4.870	1185	1191	1197	rVB3	408	511	0.04%	0.004%
20	4.899	1197	1200	1202	rBV2	405	281	0.02%	0.002%
21	4.950	1202	1216	1257	rBV2	557159	1448972	100.00%	11.062%
22	5.236	1302	1305	1311	rVB4	908	875	0.06%	0.007%
23	5.339	1332	1337	1343	rVB4	346	334	0.02%	0.003%
24	5.410	1354	1359	1360	rBV3	496	406	0.03%	0.003%
25	5.420	1360	1362	1367	rVB5	468	472	0.03%	0.004%
26	5.484	1377	1382	1386	rBV4	658	805	0.06%	0.006%
27	5.532	1386	1397	1427	rBV	325420	698684	48.22%	5.334%
28	5.828	1478	1489	1520	rVB5	42830	112895	7.79%	0.862%
29	5.985	1520	1538	1575	rBV	318106	681107	47.01%	5.200%
30	6.239	1608	1617	1639	rBV4	9380	27277	1.88%	0.208%
31	6.452	1680	1683	1687	rBV2	668	563	0.04%	0.004%
32	6.532	1706	1708	1712	rVB3	693	401	0.03%	0.003%
33	6.555	1712	1715	1720	rBV4	929	782	0.05%	0.006%
34	6.709	1760	1763	1765	rBV	501	351	0.02%	0.003%
35	6.776	1781	1784	1786	rBV2	419	274	0.02%	0.002%
36	6.831	1799	1801	1807	rVB3	631	370	0.03%	0.003%

Data Path : Z:\voasrv\HPCHEM1\MSVOA_V\Data\VW061324\
 Data File : VW036055.D
 Acq On : 13 Jun 2024 12:14
 Operator : SY/MD
 Sample : P2850-12
 Misc : 6.03g/10.0mL/MSVOA_V/SOIL/A
 ALS Vial : 10 Sample Multiplier: 1

Instrument :
 MSVOA_V
 ClientSampleId :
 BHB55

Integration Parameters: LSCINT.P

Integrator: RTE
 Smoothing : OFF
 Sampling : 1
 Start Thrs: 0.2
 Stop Thrs : 0

Filtering: 5
 Min Area: 0 % of largest Peak
 Max Peaks: 100
 Peak Location: TOP

If leading or trailing edge < 100 prefer < Baseline drop else tangent >
 Peak separation: 5

Method : Z:\voasrv\HPCHEM1\MSVOA_V\Method\SFAMVLM053024SMA.M
 Title : VOC Analysis

37	6.857	1807	1809	1812	rBV3	358	233	0.02%	0.002%
38	6.911	1815	1826	1858	rBV	130034	266862	18.42%	2.037%
39	7.114	1885	1889	1891	rBV4	566	467	0.03%	0.004%
40	7.130	1891	1894	1899	rVB5	847	785	0.05%	0.006%
41	7.239	1917	1928	1965	rBV	585585	1061850	73.28%	8.107%
42	7.503	2005	2010	2014	rBV4	1400	1215	0.08%	0.009%
43	7.555	2018	2026	2054	rBV	89057	173207	11.95%	1.322%
44	7.902	2110	2134	2164	rBV2	393299	715143	49.36%	5.460%
45	8.030	2165	2174	2209	rBV	164485	378562	26.13%	2.890%
46	8.172	2210	2218	2253	rVV	250132	469749	32.42%	3.586%
47	8.587	2344	2347	2350	rBV3	825	475	0.03%	0.004%
48	8.722	2387	2389	2391	rBV2	399	260	0.02%	0.002%
49	8.783	2397	2408	2440	rBV	569138	955794	65.96%	7.297%
50	9.008	2470	2478	2489	rBV2	4458	7970	0.55%	0.061%
51	9.085	2499	2502	2504	rBV4	605	397	0.03%	0.003%
52	9.120	2510	2513	2516	rBV4	377	280	0.02%	0.002%
53	9.243	2548	2551	2553	rVB3	456	266	0.02%	0.002%
54	9.259	2553	2556	2558	rVB3	573	315	0.02%	0.002%
55	9.291	2562	2566	2569	rBV3	442	368	0.03%	0.003%
56	9.326	2572	2577	2578	rBV2	343	269	0.02%	0.002%
57	9.362	2584	2588	2591	rBV3	576	489	0.03%	0.004%
58	9.423	2603	2607	2610	rBV3	409	367	0.03%	0.003%
59	9.455	2616	2617	2622	rVB3	421	264	0.02%	0.002%
60	9.487	2625	2627	2632	rVB2	459	330	0.02%	0.003%
61	9.509	2632	2634	2639	rBV3	673	538	0.04%	0.004%
62	9.574	2650	2654	2655	rBV	448	272	0.02%	0.002%
63	9.686	2685	2689	2691	rBV4	507	381	0.03%	0.003%
64	9.751	2700	2709	2735	rBV2	40054	82580	5.70%	0.630%
65	9.976	2775	2779	2780	rBV3	522	415	0.03%	0.003%
66	10.056	2801	2804	2809	rBV5	485	484	0.03%	0.004%
67	10.149	2822	2833	2858	rBV	327390	530464	36.61%	4.050%
68	10.236	2858	2860	2864	rVV3	1061	732	0.05%	0.006%
69	10.255	2864	2866	2871	rVV3	615	308	0.02%	0.002%
70	10.323	2875	2887	2901	rBV2	41535	69199	4.78%	0.528%
71	10.394	2907	2909	2912	rBV2	466	340	0.02%	0.003%
72	10.458	2926	2929	2931	rBV2	708	496	0.03%	0.004%
73	10.490	2935	2939	2940	rBV2	734	474	0.03%	0.004%
74	10.767	3022	3025	3029	rVB5	442	354	0.02%	0.003%
75	10.792	3029	3033	3035	rBV2	1053	816	0.06%	0.006%
76	10.857	3051	3053	3057	rBV3	355	257	0.02%	0.002%

Data Path : Z:\voasrv\HPCHEM1\MSVOA_V\Data\VW061324\
 Data File : VW036055.D
 Acq On : 13 Jun 2024 12:14
 Operator : SY/MD
 Sample : P2850-12
 Misc : 6.03g/10.0mL/MSVOA_V/SOIL/A
 ALS Vial : 10 Sample Multiplier: 1

Instrument :
 MSVOA_V
 ClientSampleId :
 BHB55

Integration Parameters: LSCINT.P

Integrator: RTE
 Smoothing : OFF Filtering: 5
 Sampling : 1 Min Area: 0 % of largest Peak
 Start Thrs: 0.2 Max Peaks: 100
 Stop Thrs : 0 Peak Location: TOP

If leading or trailing edge < 100 prefer < Baseline drop else tangent >
 Peak separation: 5

Method : Z:\voasrv\HPCHEM1\MSVOA_V\Method\SFAMVLM053024SMA.M
 Title : VOC Analysis

77	10.927	3070	3075	3078	rBV2	647	613	0.04%	0.005%
78	10.943	3078	3080	3084	rBV4	602	544	0.04%	0.004%
79	11.088	3116	3125	3144	rBV2	117773	200295	13.82%	1.529%
80	11.181	3144	3154	3176	rVB	593593	930775	64.24%	7.106%
81	11.490	3241	3250	3260	rBV2	25187	51510	3.55%	0.393%
82	11.558	3261	3271	3295	rVB	619651	990974	68.39%	7.566%
83	11.985	3396	3404	3409	rBV7	2082	3414	0.24%	0.026%
84	12.194	3459	3469	3480	rVB2	29496	47337	3.27%	0.361%
85	12.284	3488	3497	3523	rBV2	83536	150185	10.36%	1.147%
86	12.670	3614	3617	3618	rBV2	685	444	0.03%	0.003%
87	12.786	3648	3653	3658	rBV4	2084	2572	0.18%	0.020%
88	12.824	3659	3665	3678	rVB3	11514	16622	1.15%	0.127%
89	13.075	3738	3743	3745	rBV5	1217	1073	0.07%	0.008%
90	13.095	3745	3749	3754	rVV7	1437	1324	0.09%	0.010%
91	13.226	3782	3790	3791	rBV5	2369	2533	0.17%	0.019%
92	13.377	3828	3837	3850	rBV8	12602	25983	1.79%	0.198%
93	13.686	3927	3933	3945	rVB8	4288	7151	0.49%	0.055%
94	13.840	3973	3981	3992	rVB2	11075	16144	1.11%	0.123%
95	13.982	4015	4025	4036	rBV	29025	48729	3.36%	0.372%
96	14.123	4053	4069	4078	rBV	4560	11202	0.77%	0.086%
97	14.593	4212	4215	4220	rBV5	1132	930	0.06%	0.007%
98	14.786	4271	4275	4288	rVB9	5143	6941	0.48%	0.053%
99	14.921	4315	4317	4323	rBV7	817	740	0.05%	0.006%
100	15.580	4512	4522	4537	rBV2	17291	30550	2.11%	0.233%

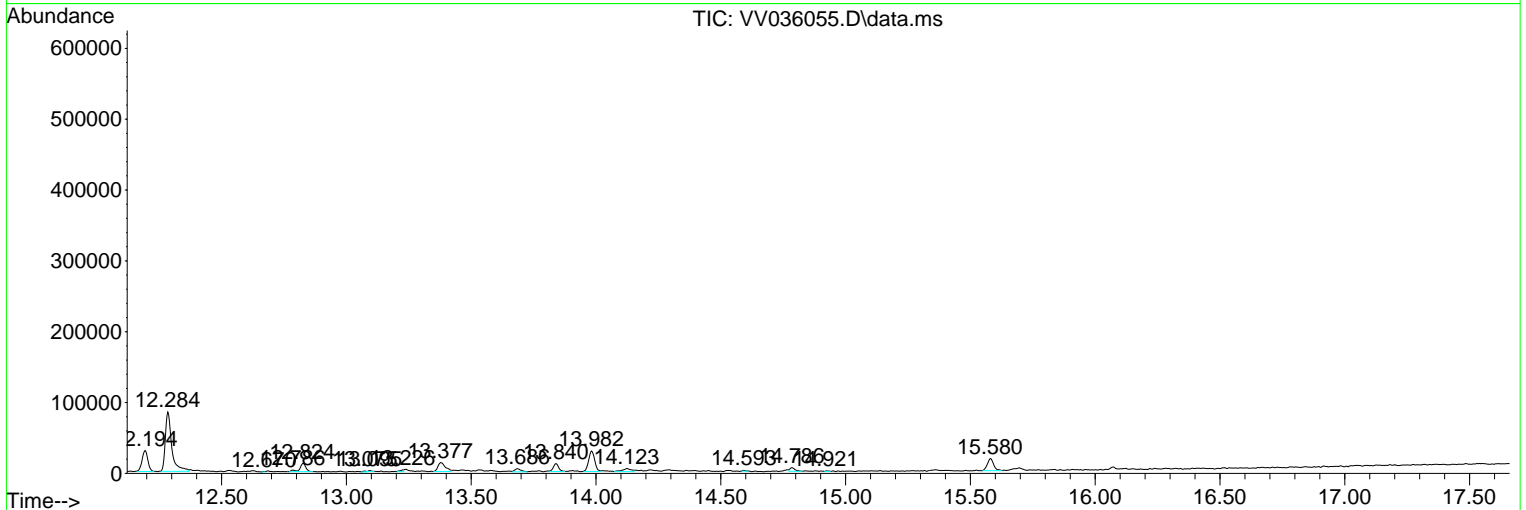
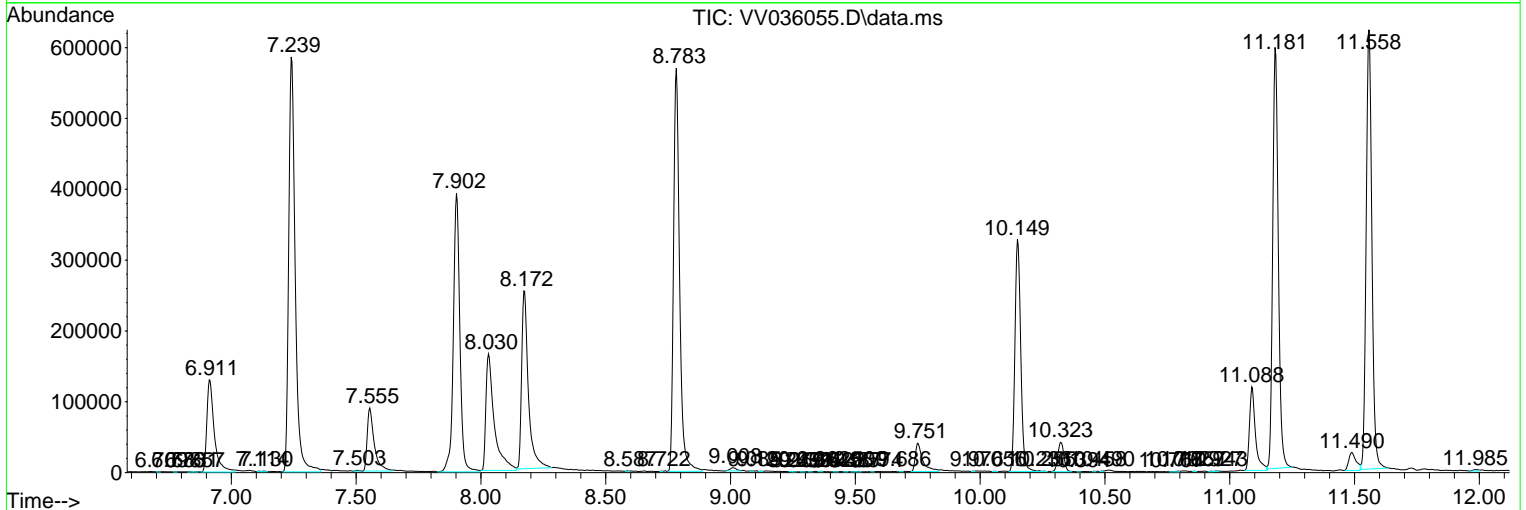
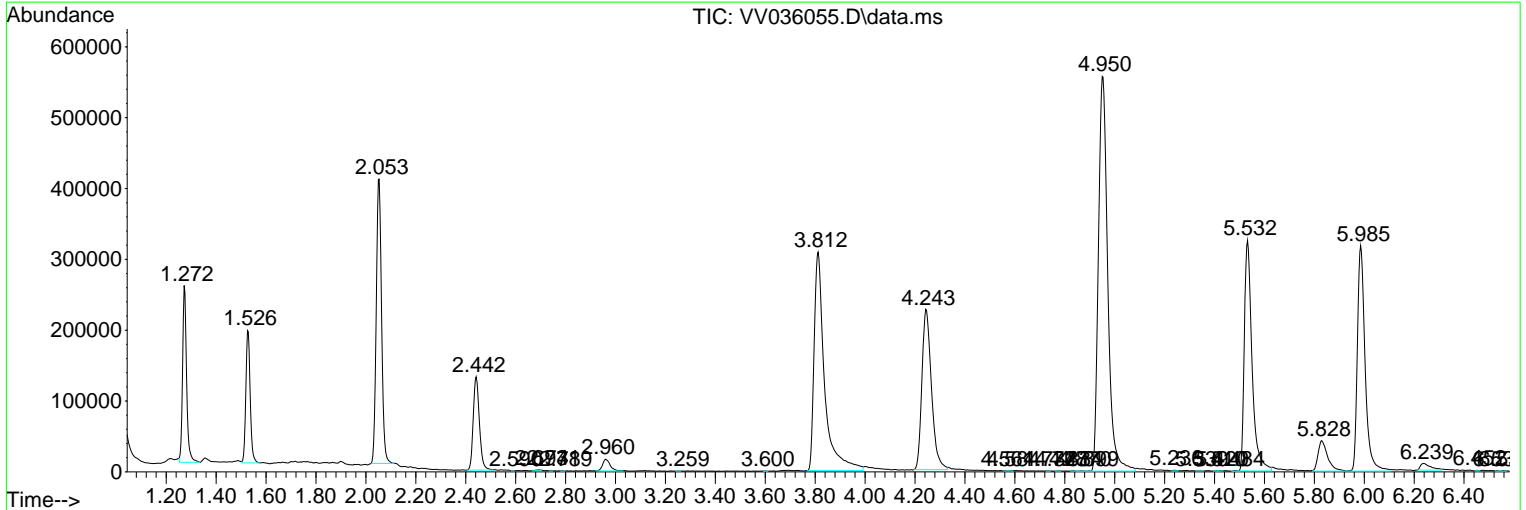
Sum of corrected areas: 13098459

Data Path : Z:\voasrv\HPCHEM1\MSVOA_V\Data\VV061324\
 Data File : VV036055.D
 Acq On : 13 Jun 2024 12:14
 Operator : SY/MD
 Sample : P2850-12
 Misc : 6.03g/10.0mL/MSVOA_V/SOIL/A
 ALS Vial : 10 Sample Multiplier: 1

Instrument :
 MSVOA_V
 ClientSampleId :
 BHB55

Quant Method : Z:\voasrv\HPCHEM1\MSVOA_V\Method\SFAMVLM053024SMA.M
 Quant Title : VOC Analysis

TIC Library : C:\Database\NIST20.L
 TIC Integration Parameters: LSCINT.P



Data Path : Z:\voasrv\HPCHEM1\MSVOA_V\Data\VV061324\
 Data File : VV036055.D
 Acq On : 13 Jun 2024 12:14
 Operator : SY/MD
 Sample : P2850-12
 Misc : 6.03g/10.0mL/MSVOA_V/SOIL/A
 ALS Vial : 10 Sample Multiplier: 1

Instrument :
 MSVOA_V
 ClientSampleId :
 BHB55

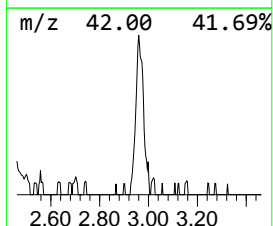
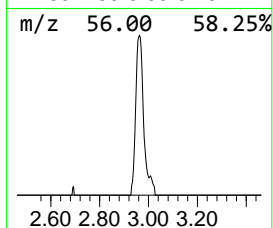
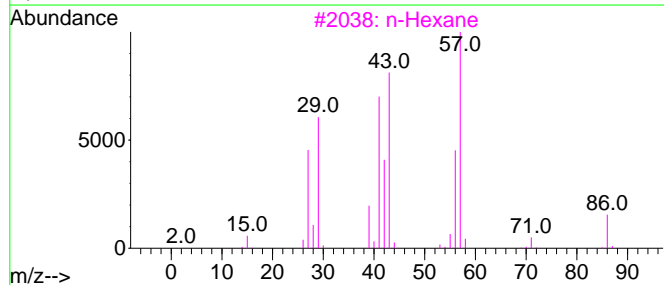
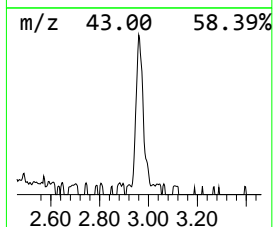
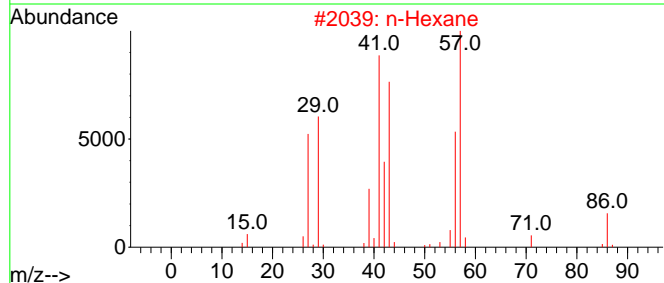
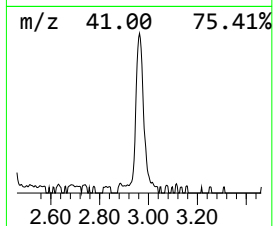
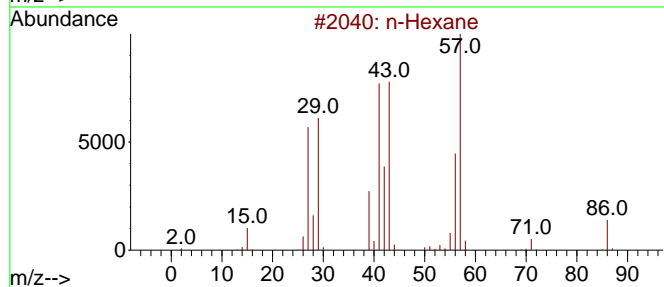
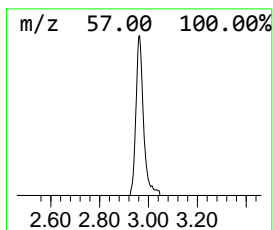
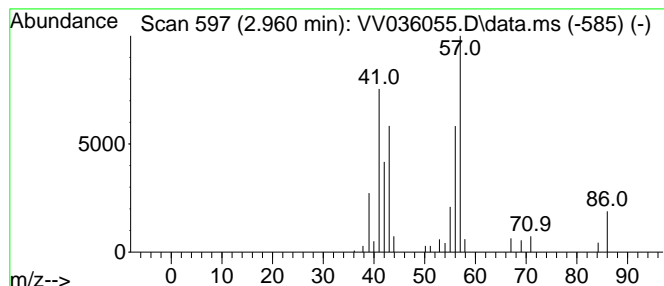
Quant Method : Z:\voasrv\HPCHEM1\MSVOA_V\Method\SFAMVLM053024SMA.M
 Quant Title : VOC Analysis

TIC Library : C:\Database\NIST20.L
 TIC Integration Parameters: LSCINT.P

 Peak Number 1 (DEL) Alkane: Straight-Chai... Concentration Rank 10

R.T.	EstConc	Area	Relative to ISTD	R.T.
2.960	1.27 ug/L	35427	1,4-Difluorobenzene	5.532

Hit#	of 5	Tentative ID	MW	MolForm	CAS#	Qual
1		n-Hexane	86	C6H14	000110-54-3	86
2		n-Hexane	86	C6H14	000110-54-3	78
3		n-Hexane	86	C6H14	000110-54-3	78
4		2-Ethyl-oxetane	86	C5H10O	1010386-40-2	53
5		1-Pentene, 4-methyl-	84	C6H12	000691-37-2	42



Data Path : Z:\voasrv\HPCHEM1\MSVOA_V\Data\VV061324\
 Data File : VV036055.D
 Acq On : 13 Jun 2024 12:14
 Operator : SY/MD
 Sample : P2850-12
 Misc : 6.03g/10.0mL/MSVOA_V/SOIL/A
 ALS Vial : 10 Sample Multiplier: 1

Instrument :
 MSVOA_V
 ClientSampleId :
 BHB55

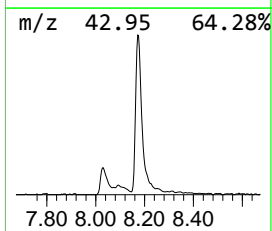
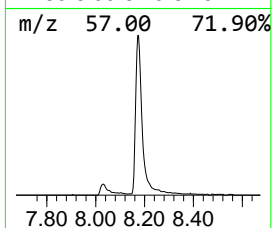
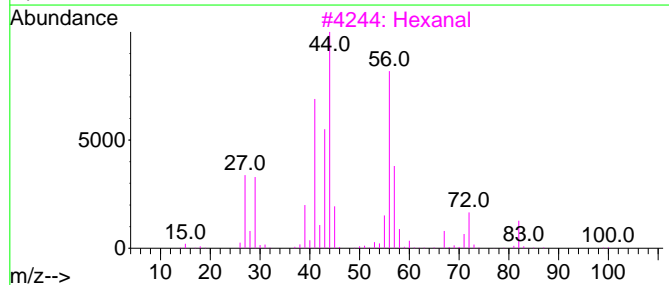
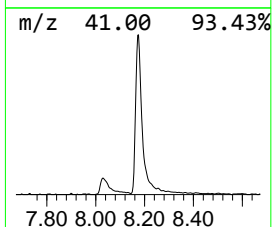
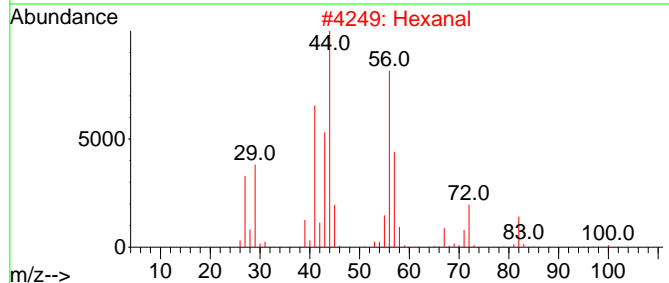
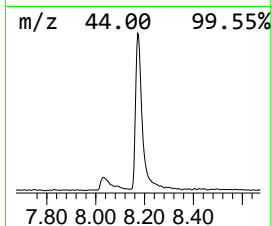
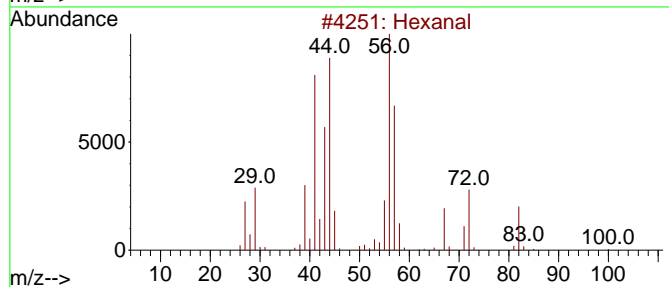
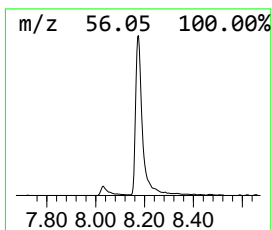
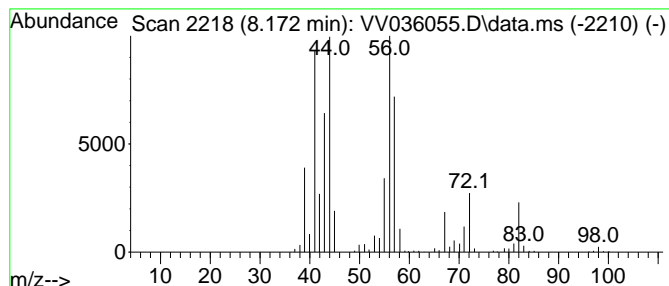
Quant Method : Z:\voasrv\HPCHEM1\MSVOA_V\Method\SFAMVLM053024SMA.M
 Quant Title : VOC Analysis

TIC Library : C:\Database\NIST20.L
 TIC Integration Parameters: LSCINT.P

 Peak Number 3 Hexanal Concentration Rank 1

R.T.	EstConc	Area	Relative to ISTD	R.T.
8.172	12.29 ug/L	469749	Chlorobenzene-d5	8.783

Hit#	of	5	Tentative ID	MW	MolForm	CAS#	Qual
1	Hexanal			100	C6H12O	000066-25-1	94
2	Hexanal			100	C6H12O	000066-25-1	74
3	Hexanal			100	C6H12O	000066-25-1	74
4	Hexanal			100	C6H12O	000066-25-1	64
5	Hexanal			100	C6H12O	000066-25-1	59



Data Path : Z:\voasrv\HPCHEM1\MSVOA_V\Data\VV061324\
 Data File : VV036055.D
 Acq On : 13 Jun 2024 12:14
 Operator : SY/MD
 Sample : P2850-12
 Misc : 6.03g/10.0mL/MSVOA_V/SOIL/A
 ALS Vial : 10 Sample Multiplier: 1

Instrument :
 MSVOA_V
 ClientSampleId :
 BHB55

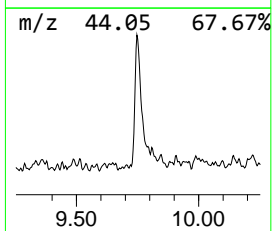
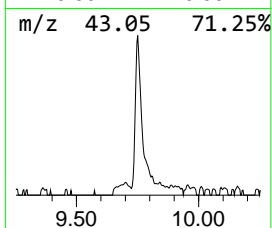
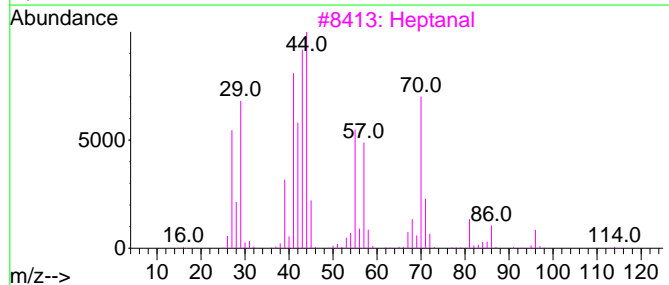
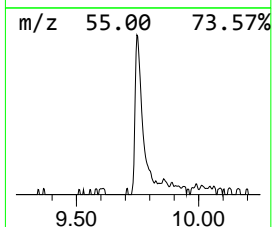
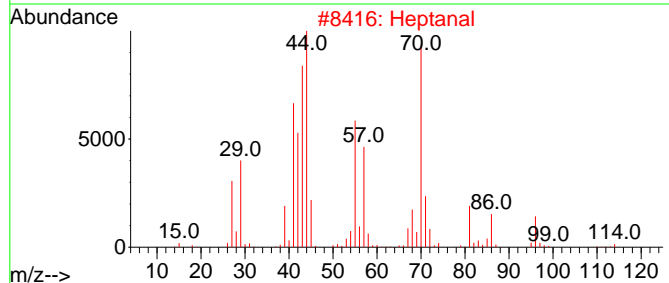
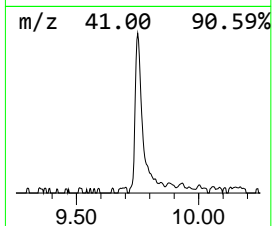
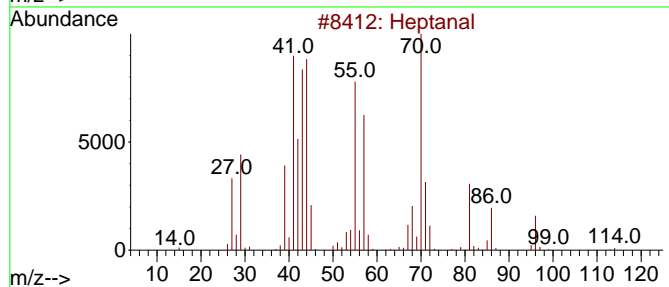
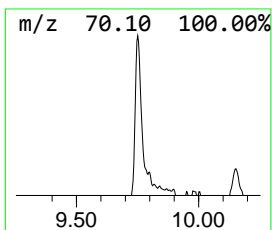
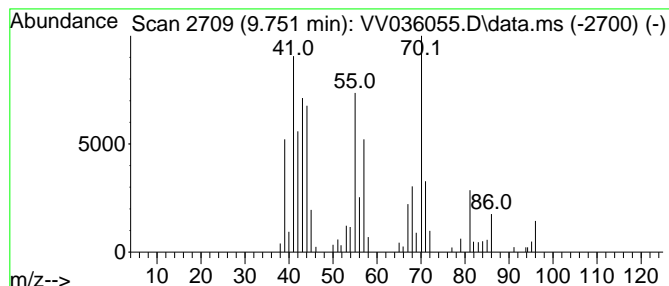
Quant Method : Z:\voasrv\HPCHEM1\MSVOA_V\Method\SFAMVLM053024SMA.M
 Quant Title : VOC Analysis

TIC Library : C:\Database\NIST20.L
 TIC Integration Parameters: LSCINT.P

 Peak Number 4 Heptanal Concentration Rank 5

R.T.	EstConc	Area	Relative to ISTD	R.T.
9.751	2.16 ug/L	82580	Chlorobenzene-d5	8.783

Hit# of 5	Tentative ID	MW	MolForm	CAS#	Qual
1	Heptanal	114	C7H14O	000111-71-7	72
2	Heptanal	114	C7H14O	000111-71-7	59
3	Heptanal	114	C7H14O	000111-71-7	59
4	Heptanal	114	C7H14O	000111-71-7	59
5	Heptanal	114	C7H14O	000111-71-7	59



Data Path : Z:\voasrv\HPCHEM1\MSVOA_V\Data\VV061324\
 Data File : VV036055.D
 Acq On : 13 Jun 2024 12:14
 Operator : SY/MD
 Sample : P2850-12
 Misc : 6.03g/10.0mL/MSVOA_V/SOIL/A
 ALS Vial : 10 Sample Multiplier: 1

Instrument :
 MSVOA_V
 ClientSampleId :
 BHB55

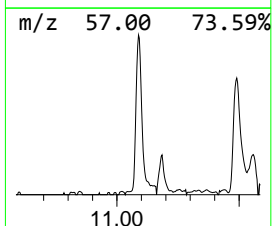
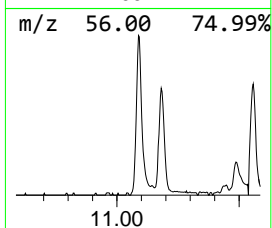
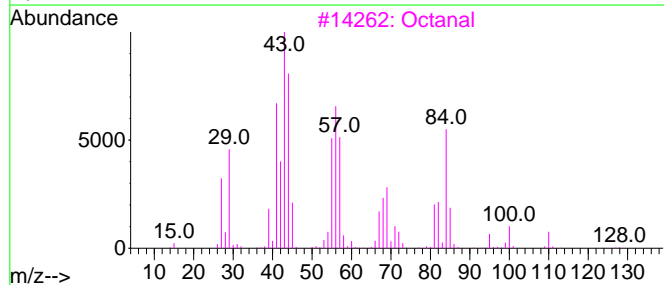
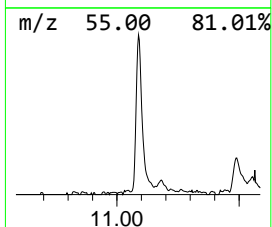
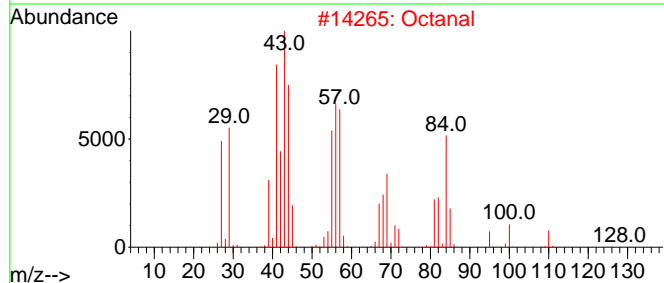
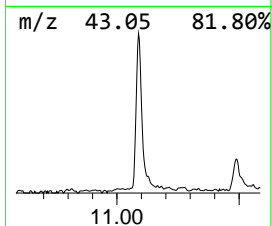
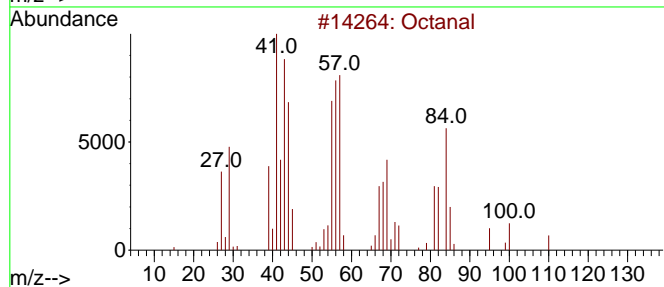
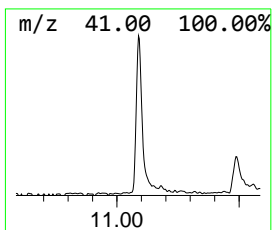
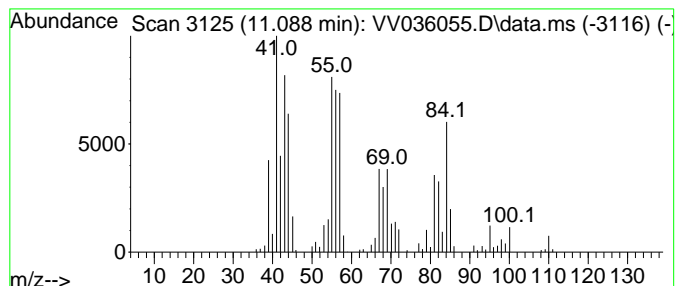
Quant Method : Z:\voasrv\HPCHEM1\MSVOA_V\Method\SFAMVLM053024SMA.M
 Quant Title : VOC Analysis

TIC Library : C:\Database\NIST20.L
 TIC Integration Parameters: LSCINT.P

 Peak Number 6 Octanal Concentration Rank 3

R.T.	EstConc	Area	Relative to ISTD	R.T.
11.088	5.38 ug/L	200295	1,4-Dichlorobenzene-d4	11.181

Hit#	of	5	Tentative ID	MW	MolForm	CAS#	Qual
1	Octanal			128	C8H16O	000124-13-0	91
2	Octanal			128	C8H16O	000124-13-0	86
3	Octanal			128	C8H16O	000124-13-0	72
4	Octanal			128	C8H16O	000124-13-0	64
5	2(3H)-Furanone, dihydro-3-methyl-			100	C5H8O2	001679-47-6	30



Data Path : Z:\voasrv\HPCHEM1\MSVOA_V\Data\VV061324\
 Data File : VV036055.D
 Acq On : 13 Jun 2024 12:14
 Operator : SY/MD
 Sample : P2850-12
 Misc : 6.03g/10.0mL/MSVOA_V/SOIL/A
 ALS Vial : 10 Sample Multiplier: 1

Instrument :
 MSVOA_V
 ClientSampleId :
 BHB55

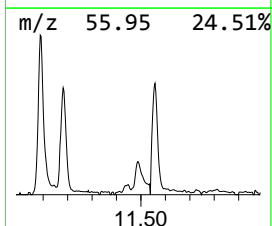
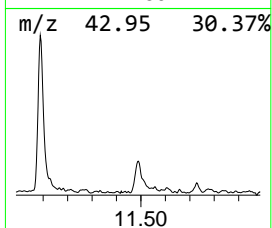
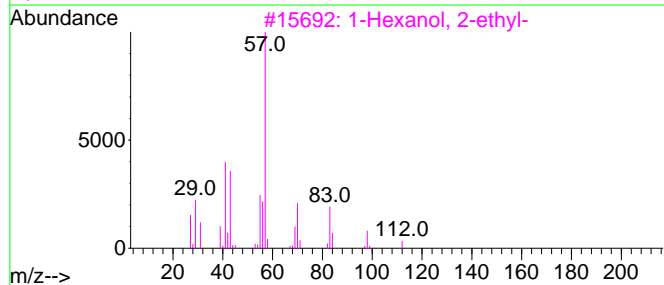
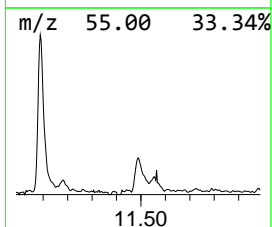
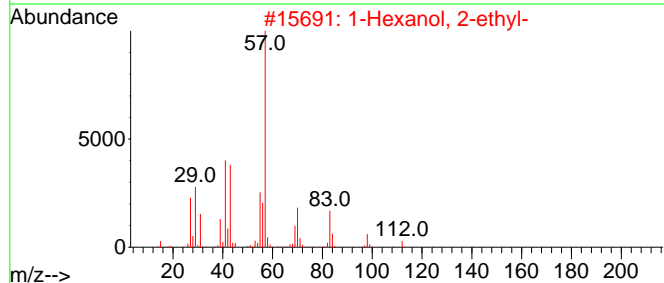
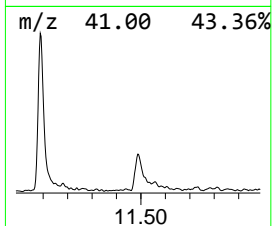
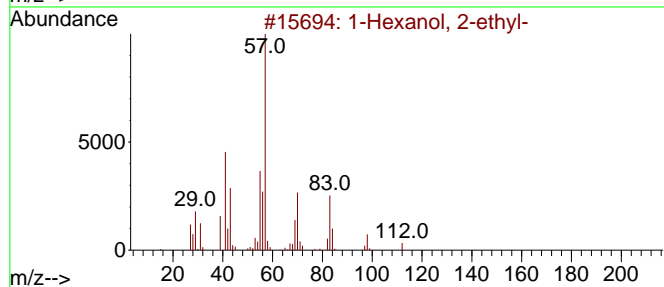
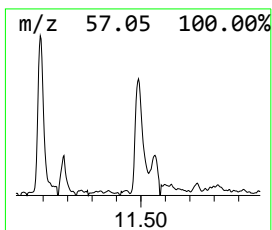
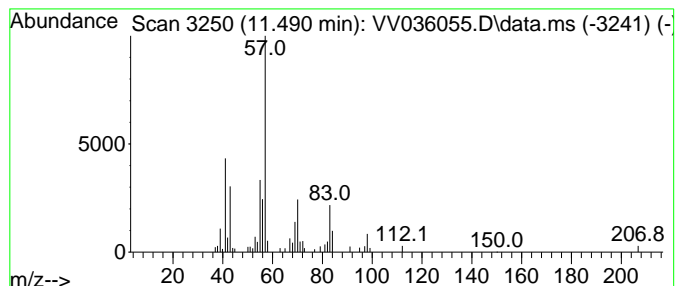
Quant Method : Z:\voasrv\HPCHEM1\MSVOA_V\Method\SFAMVLM053024SMA.M
 Quant Title : VOC Analysis

TIC Library : C:\Database\NIST20.L
 TIC Integration Parameters: LSCINT.P

 Peak Number 7 1-Hexanol, 2-ethyl- Concentration Rank 7

R.T.	EstConc	Area	Relative to ISTD	R.T.
11.490	1.38 ug/L	51510	1,4-Dichlorobenzene-d4	11.181

Hit#	of	5	Tentative ID	MW	MolForm	CAS#	Qual
1			1-Hexanol, 2-ethyl-	130	C8H18O	000104-76-7	90
2			1-Hexanol, 2-ethyl-	130	C8H18O	000104-76-7	78
3			1-Hexanol, 2-ethyl-	130	C8H18O	000104-76-7	78
4			1-Hexanol, 2-ethyl-	130	C8H18O	000104-76-7	78
5			1-Hexanol, 2-ethyl-	130	C8H18O	000104-76-7	78



Data Path : Z:\voasrv\HPCHEM1\MSVOA_V\Data\VV061324\
 Data File : VV036055.D
 Acq On : 13 Jun 2024 12:14
 Operator : SY/MD
 Sample : P2850-12
 Misc : 6.03g/10.0mL/MSVOA_V/SOIL/A
 ALS Vial : 10 Sample Multiplier: 1

Instrument :
 MSVOA_V
 ClientSampleId :
 BHB55

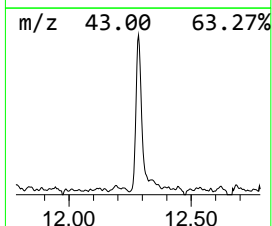
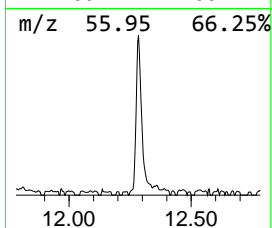
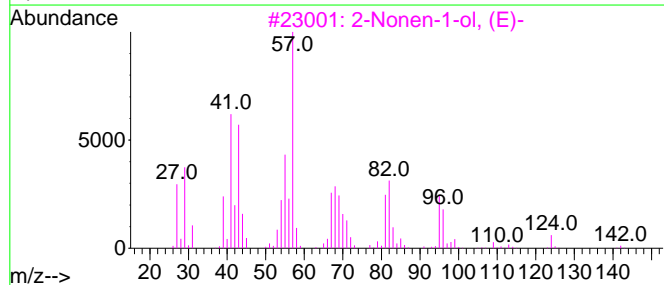
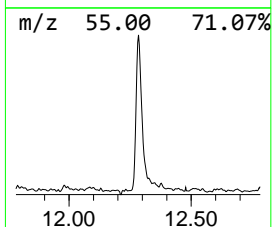
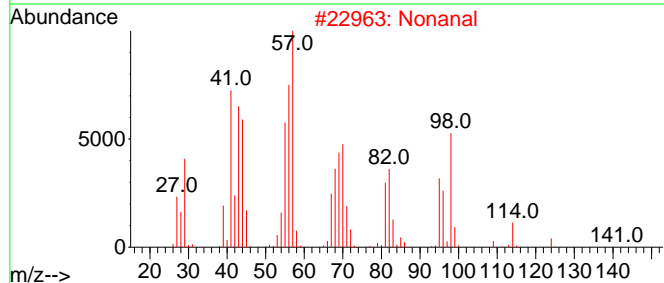
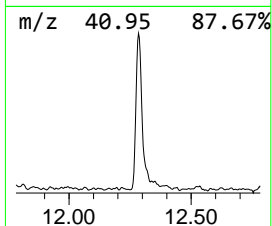
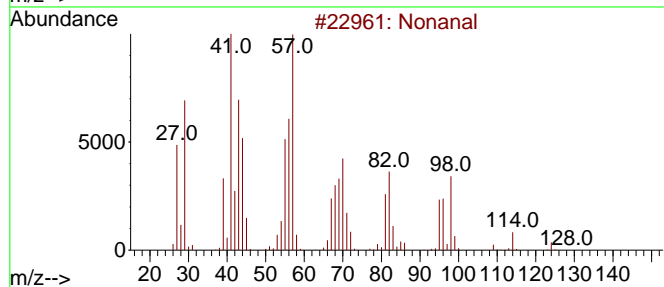
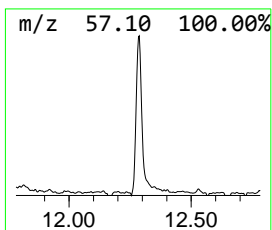
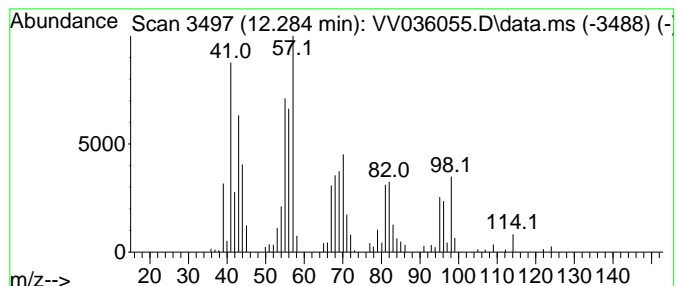
Quant Method : Z:\voasrv\HPCHEM1\MSVOA_V\Method\SFAMVLM053024SMA.M
 Quant Title : VOC Analysis

TIC Library : C:\Database\NIST20.L
 TIC Integration Parameters: LSCINT.P

 Peak Number 9 Nonanal Concentration Rank 4

R.T.	EstConc	Area	Relative to ISTD	R.T.
12.284	4.03 ug/L	150185	1,4-Dichlorobenzene-d4	11.181

Hit#	of	5	Tentative ID	MW	MolForm	CAS#	Qual
1			Nonanal	142	C9H18O	000124-19-6	91
2			Nonanal	142	C9H18O	000124-19-6	90
3			2-Nonen-1-ol, (E)-	142	C9H18O	031502-14-4	38
4			Cyclohexanol, 2-methyl-, cis-	114	C7H14O	007443-70-1	30
5			Cyclohexanol, 2-methyl-, trans-	114	C7H14O	007443-52-9	30



Data Path : Z:\voasrv\HPCHEM1\MSVOA_V\Data\VW061324\
 Data File : VW036055.D
 Acq On : 13 Jun 2024 12:14
 Operator : SY/MD
 Sample : P2850-12
 Misc : 6.03g/10.0mL/MSVOA_V/SOIL/A
 ALS Vial : 10 Sample Multiplier: 1

Instrument :
 MSVOA_V
 ClientSampleId :
 BHB55

Quant Method : Z:\voasrv\HPCHEM1\MSVOA_V\Method\SFAMVLM053024SMA.M
 Quant Title : VOC Analysis

TIC Library : C:\Database\NIST0.L
 TIC Integration Parameters: LSCINT.P

TIC Top Hit name	RT	EstConc	Units	Response	--Internal Standard--			
					#	RT	Resp	Conc
(DEL) Alkane: S...	2.960	1.3	ug/L	35427	1	5.532	698684	25.0
Hexanal	8.172	12.3	ug/L	469749	2	8.783	955794	25.0
Heptanal	9.751	2.2	ug/L	82580	2	8.783	955794	25.0
Octanal	11.088	5.4	ug/L	200295	3	11.181	930775	25.0
1-Hexanol, 2-et...	11.490	1.4	ug/L	51510	3	11.181	930775	25.0
Nonanal	12.284	4.0	ug/L	150185	3	11.181	930775	25.0