

Data Path : Z:\voasrv\HPCHEM1\MSVOA_V\Data\VW061522\
 Data File : VW026311.D
 Acq On : 16 Jun 2022 04:54
 Operator : SY/MD
 Sample : N3274-16 10X
 Misc : 25.0mL/MSVOA_V/WATER
 ALS Vial : 49 Sample Multiplier: 1

Instrument :
 MSVOA_V
 ClientSampleId :
 C0BB9

Quant Time: Jun 16 06:59:20 2022
 Quant Method : Z:\voasrv\HPCHEM1\MSVOA_V\Method\SFAMVTR061522WMA.M
 Quant Title : TRACE VOA SFAM1.0
 QLast Update : Thu Jun 16 04:34:39 2022
 Response via : Initial Calibration

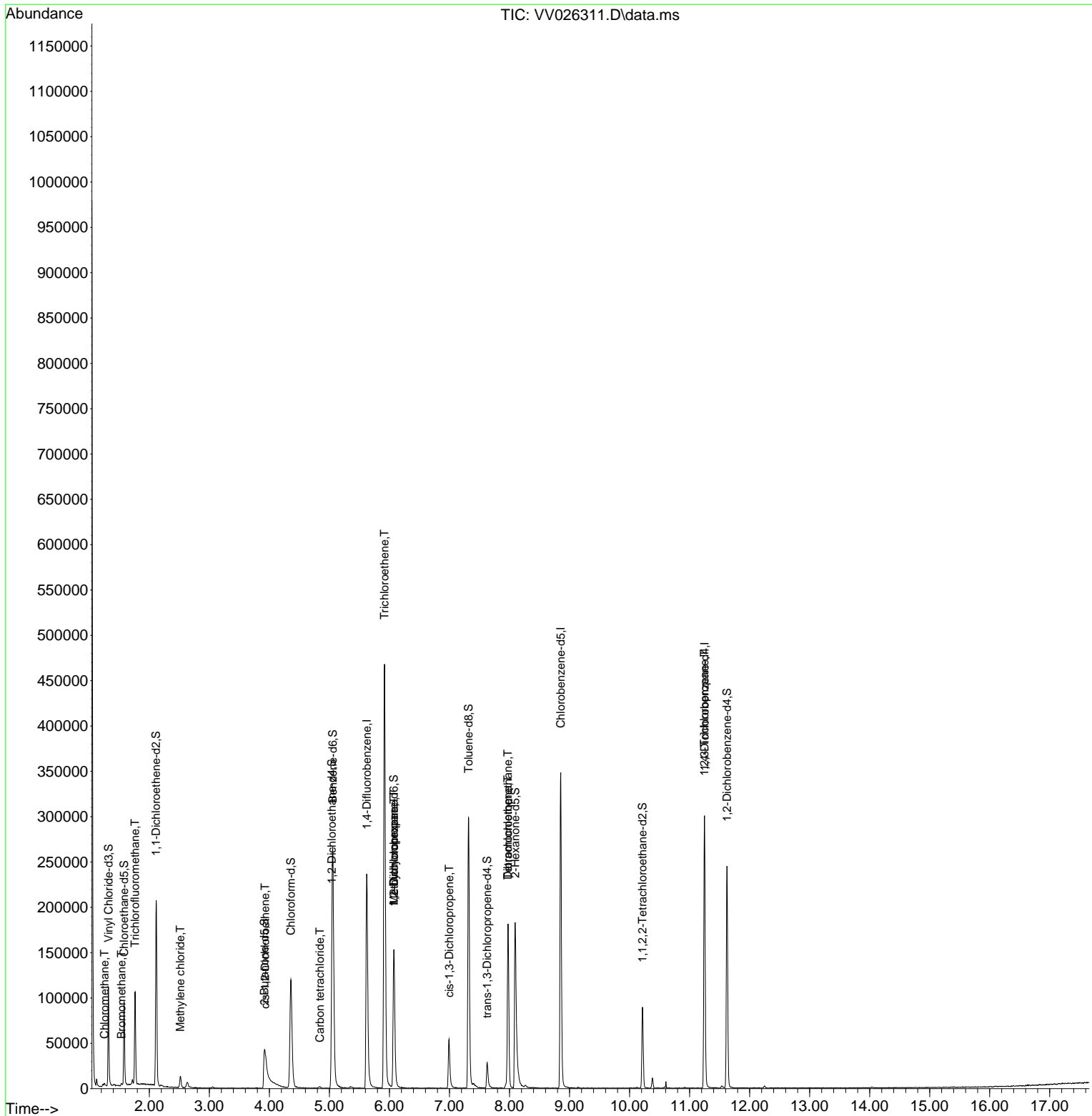
Compound	R.T.	QIon	Response	Conc	Units	Dev(Min)
Internal Standards						
1) 1,4-Difluorobenzene	5.622	114	214064	5.000	ug/L	0.00
28) Chlorobenzene-d5	8.853	117	201005	5.000	ug/L	0.00
58) 1,4-Dichlorobenzene-d4	11.249	152	81927	5.000	ug/L	0.00
System Monitoring Compounds						
4) Vinyl Chloride-d3	1.320	65	76607	4.120	ug/L	0.00
Spiked Amount	5.000	Range 40 - 130	Recovery	=	82.400%	
7) Chloroethane-d5	1.580	69	63216	4.324	ug/L	0.00
Spiked Amount	5.000	Range 65 - 130	Recovery	=	86.400%	
11) 1,1-Dichloroethene-d2	2.114	63	108684	3.404	ug/L	0.00
Spiked Amount	5.000	Range 60 - 125	Recovery	=	68.000%	
20) 2-Butanone-d5	3.918	46	80395	44.314	ug/L	0.00
Spiked Amount	50.000	Range 40 - 130	Recovery	=	88.620%	
24) Chloroform-d	4.358	84	129405	4.749	ug/L	0.00
Spiked Amount	5.000	Range 70 - 125	Recovery	=	95.000%	
26) 1,2-Dichloroethane-d4	5.040	65	53824	4.668	ug/L	0.00
Spiked Amount	5.000	Range 70 - 130	Recovery	=	93.400%	
32) Benzene-d6	5.056	84	256763	4.778	ug/L	0.00
Spiked Amount	5.000	Range 70 - 125	Recovery	=	95.600%	
36) 1,2-Dichloropropane-d6	6.072	67	78635	5.014	ug/L	0.00
Spiked Amount	5.000	Range 60 - 140	Recovery	=	100.200%	
41) Toluene-d8	7.317	98	206931	4.223	ug/L	0.00
Spiked Amount	5.000	Range 70 - 130	Recovery	=	84.400%	
43) trans-1,3-Dichloroprop...	7.628	79	18960	3.728	ug/L	0.00
Spiked Amount	5.000	Range 55 - 130	Recovery	=	74.600%	
46) 2-Hexanone-d5	8.095	63	70509	45.896	ug/L	0.00
Spiked Amount	50.000	Range 45 - 130	Recovery	=	91.800%	
56) 1,1,2,2-Tetrachloroeth...	10.217	84	45512	4.711	ug/L	0.00
Spiked Amount	5.000	Range 65 - 120	Recovery	=	94.200%	
66) 1,2-Dichlorobenzene-d4	11.622	152	66303	5.254	ug/L	0.00
Spiked Amount	5.000	Range 80 - 120	Recovery	=	105.000%	
Target Compounds						
3) Chloromethane	1.252	50	1547	0.087	ug/L	87
6) Bromomethane	1.535	94	1485	0.144	ug/L	95
9) Trichlorofluoromethane	1.764	101	59989	2.352	ug/L	99
16) Methylene chloride	2.516	84	5279	0.306	ug/L	94
22) cis-1,2-Dichloroethene	3.931	96	679	0.051	ug/L	78
31) Carbon tetrachloride	4.844	117	1347	0.072	ug/L	97
34) Trichloroethene	5.918	95	166215	11.814	ug/L	98
35) Methylcyclohexane	6.075	83	19144	0.984	ug/L #	19
37) 1,2-Dichloropropane	6.075	63	8716	0.647	ug/L #	88
39) cis-1,3-Dichloropropene	6.995	75	1352	0.088	ug/L #	72
47) Tetrachloroethene	7.976	164	42327	4.062	ug/L	96
49) Dibromochloromethane	7.976	129	37279	3.805	ug/L #	9
61) 1,2,3-Trichloropropane	11.246	75	8676	1.632	ug/L #	66

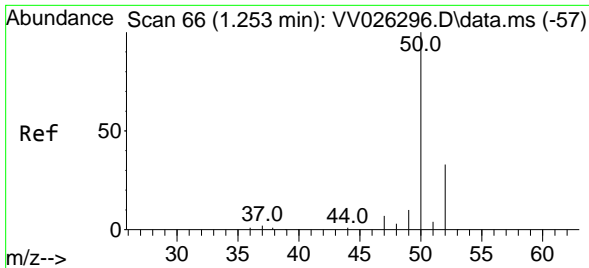
(#) = qualifier out of range (m) = manual integration (+) = signals summed

Data Path : Z:\voasrv\HPCHEM1\MSVOA_V\Data\VV061522\
 Data File : VV026311.D
 Acq On : 16 Jun 2022 04:54
 Operator : SY/MD
 Sample : N3274-16 10X
 Misc : 25.0mL/MSVOA_V/WATER
 ALS Vial : 49 Sample Multiplier: 1

Instrument :
 MSVOA_V
 ClientSampleId :
 C0BB9

Quant Time: Jun 16 06:59:20 2022
 Quant Method : Z:\voasrv\HPCHEM1\MSVOA_V\Method\SFAMVTR061522WMA.M
 Quant Title : TRACE VOA SFAM1.0
 QLast Update : Thu Jun 16 04:34:39 2022
 Response via : Initial Calibration

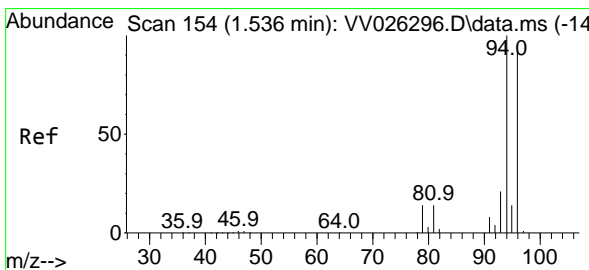
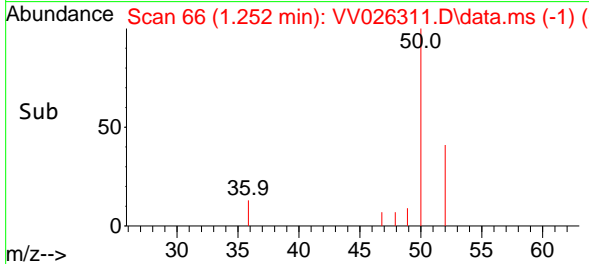
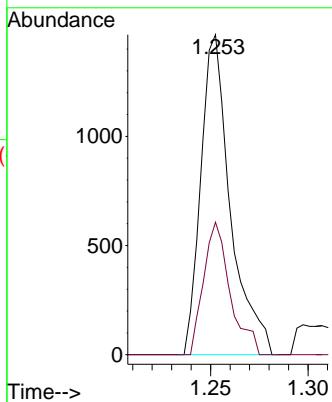
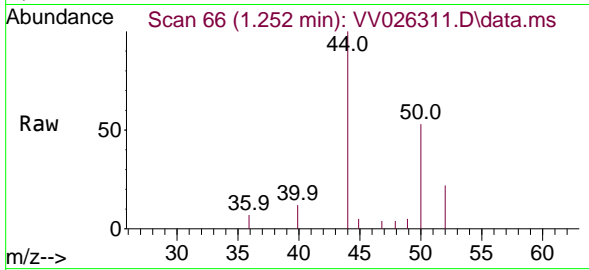




#3
 Chloromethane
 Concen: 0.087 ug/L
 RT: 1.252 min Scan# 60
 Delta R.T. -0.000 min
 Lab File: VV026311.D
 Acq: 16 Jun 2022 04:54

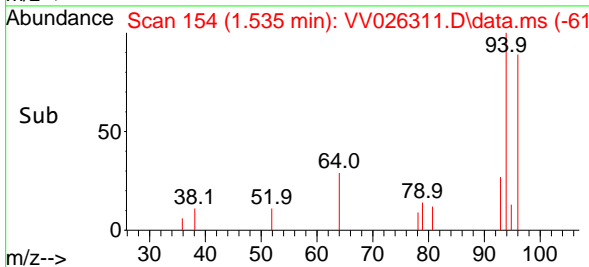
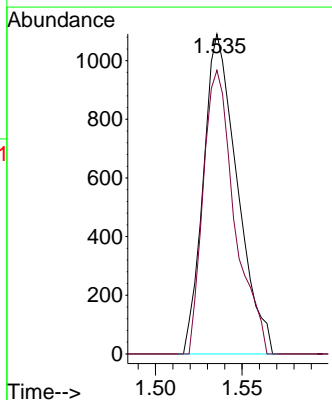
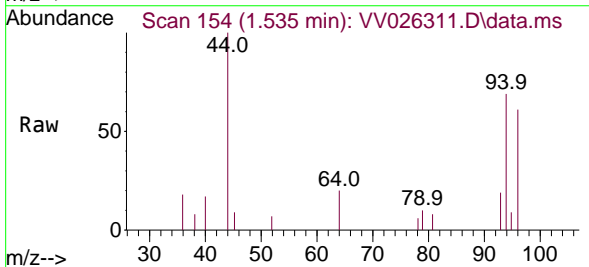
Instrument :
 MSVOA_V
 ClientSampleId :
 C0BB9

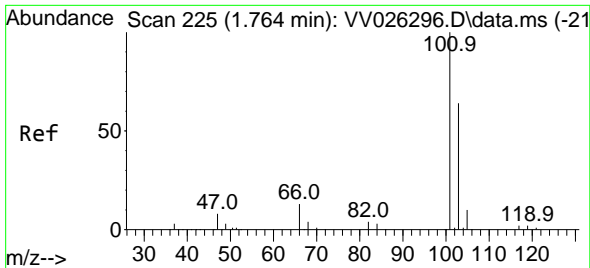
Tgt Ion: 50 Resp: 1547
 Ion Ratio Lower Upper
 50 100
 52 41.4 23.7 44.1



#6
 Bromomethane
 Concen: 0.144 ug/L
 RT: 1.535 min Scan# 154
 Delta R.T. -0.000 min
 Lab File: VV026311.D
 Acq: 16 Jun 2022 04:54

Tgt Ion: 94 Resp: 1485
 Ion Ratio Lower Upper
 94 100
 96 88.6 65.7 121.9

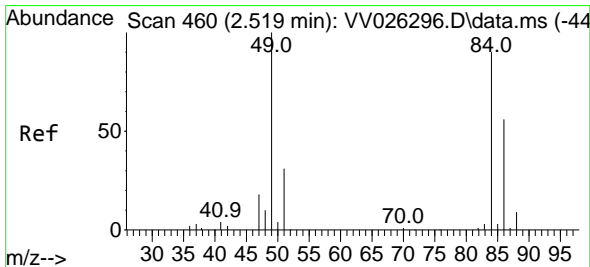
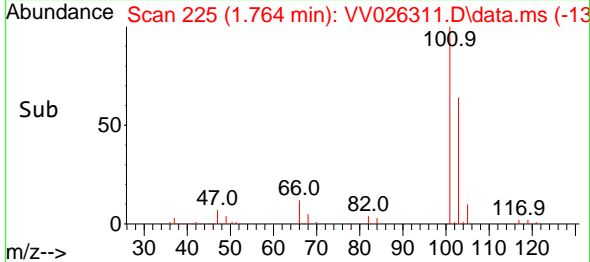
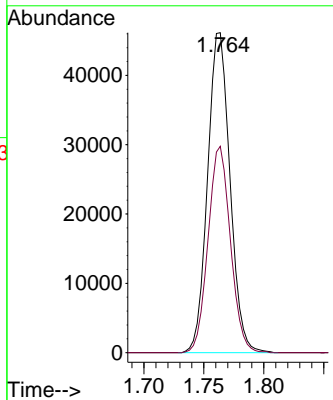
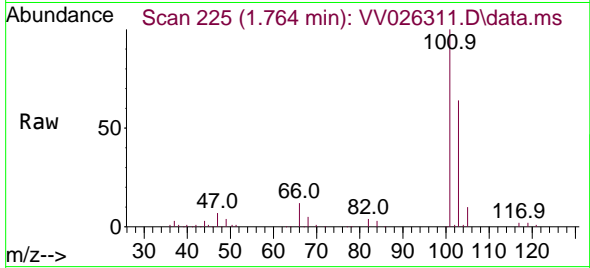




#9
 Trichlorofluoromethane
 Concen: 2.352 ug/L
 RT: 1.764 min Scan# 21
 Delta R.T. -0.000 min
 Lab File: VV026311.D
 Acq: 16 Jun 2022 04:54

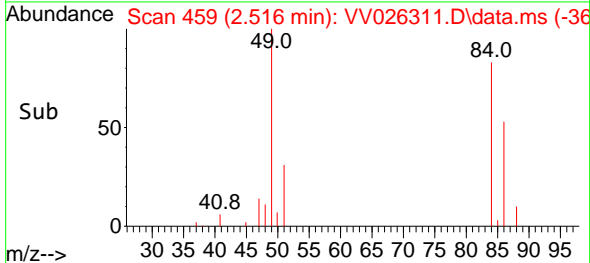
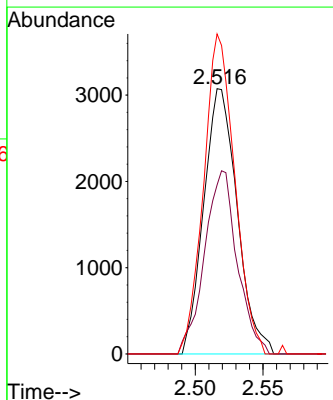
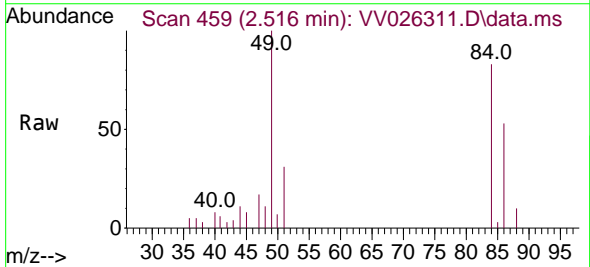
Instrument :
 MSVOA_V
 ClientSampleId :
 COBB9

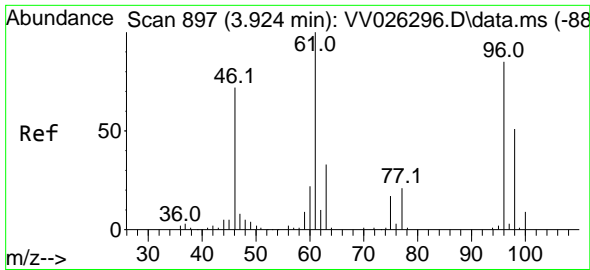
Tgt Ion: 101 Resp: 59989
 Ion Ratio Lower Upper
 101 100
 103 64.3 52.3 78.5



#16
 Methylene chloride
 Concen: 0.306 ug/L
 RT: 2.516 min Scan# 459
 Delta R.T. -0.003 min
 Lab File: VV026311.D
 Acq: 16 Jun 2022 04:54

Tgt Ion: 84 Resp: 5279
 Ion Ratio Lower Upper
 84 100
 86 63.7 44.0 81.8
 49 120.6 77.3 143.7



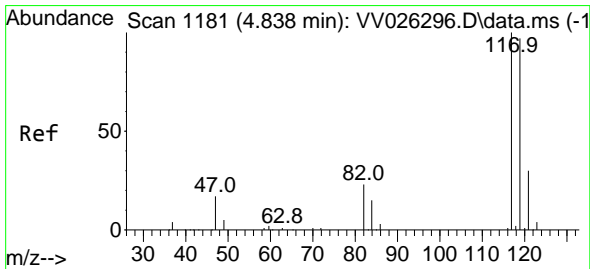
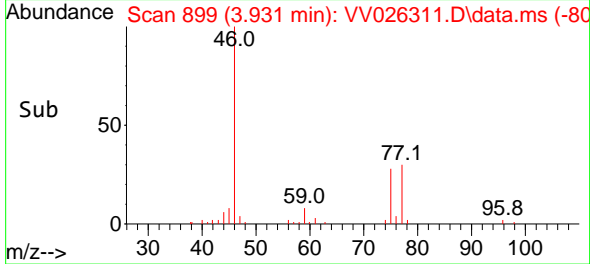
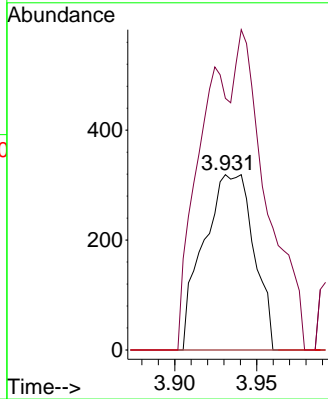
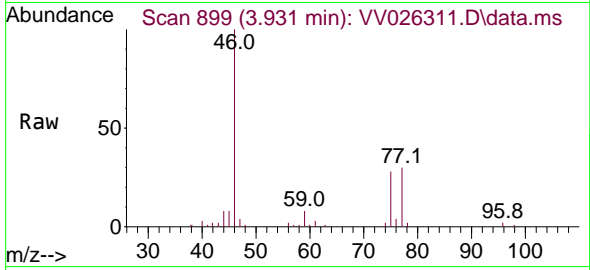


#22
 cis-1,2-Dichloroethene
 Concen: 0.051 ug/L
 RT: 3.931 min Scan# 899
 Delta R.T. 0.006 min
 Lab File: VV026311.D
 Acq: 16 Jun 2022 04:54

Instrument :
 MSVOA_V
 ClientSampleId :
 COBB9

Tgt Ion: 96 Resp: 679

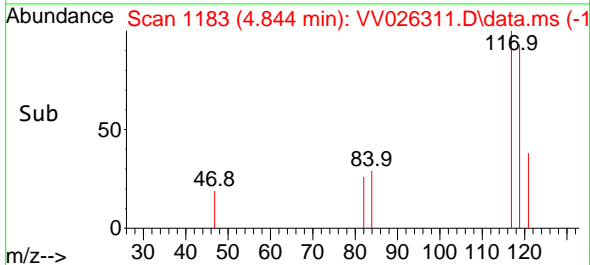
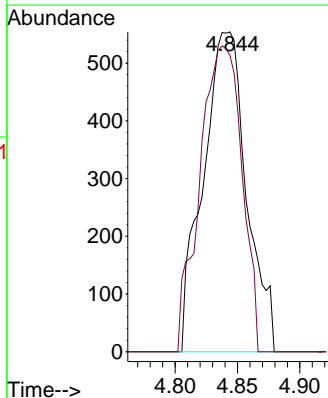
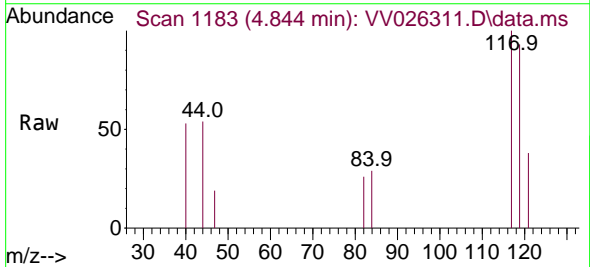
Ion	Ratio	Lower	Upper
96	100		
61	143.6	83.6	155.2
68	0.0	0.0	0.0

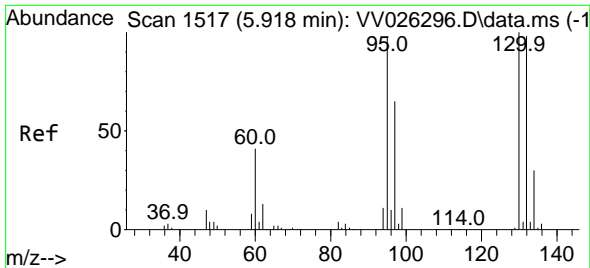


#31
 Carbon tetrachloride
 Concen: 0.072 ug/L
 RT: 4.844 min Scan# 1183
 Delta R.T. 0.006 min
 Lab File: VV026311.D
 Acq: 16 Jun 2022 04:54

Tgt Ion: 117 Resp: 1347

Ion	Ratio	Lower	Upper
117	100		
119	92.4	76.2	114.4



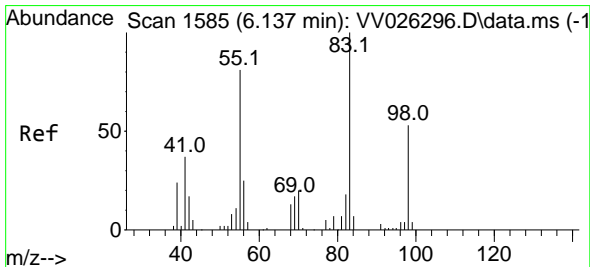
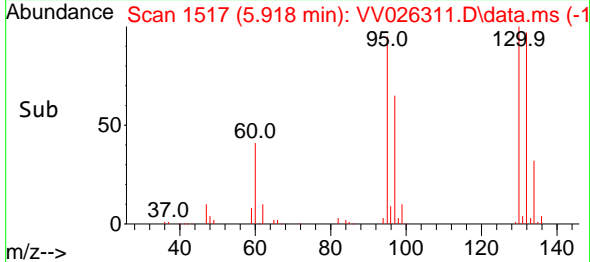
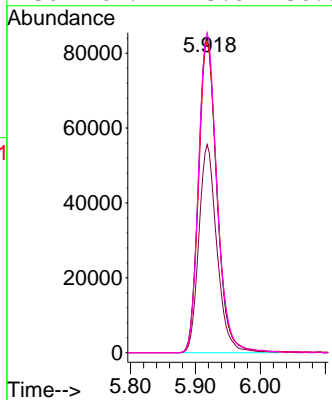
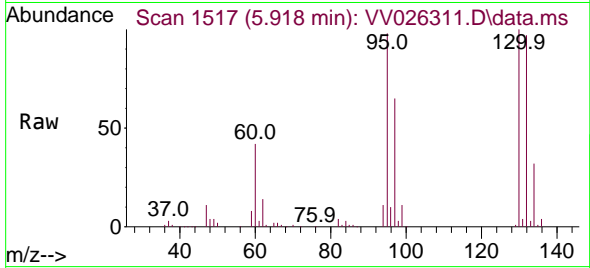


#34
 Trichloroethene
 Concen: 11.814 ug/L
 RT: 5.918 min Scan# 1517
 Delta R.T. -0.000 min
 Lab File: VV026311.D
 Acq: 16 Jun 2022 04:54

Instrument : MSVOA_V
 ClientSampleId : C0BB9

Tgt Ion: 95 Resp: 166215

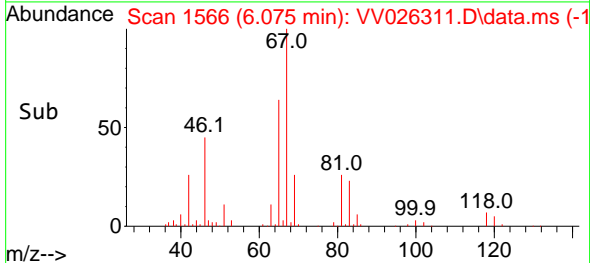
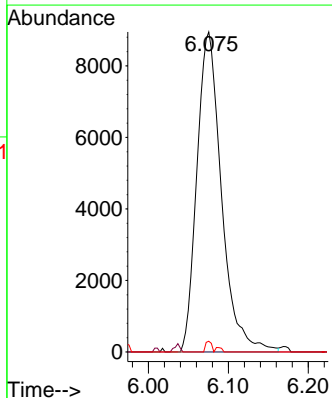
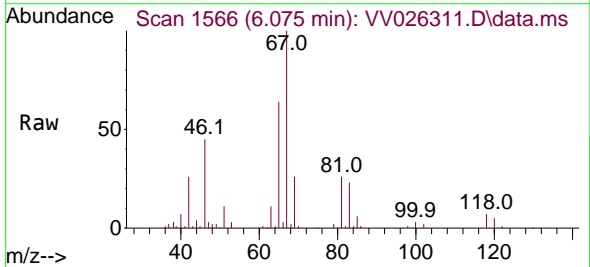
Ion	Ratio	Lower	Upper
95	100		
97	66.2	46.5	86.3
132	99.0	68.8	127.8
130	101.7	73.6	136.6

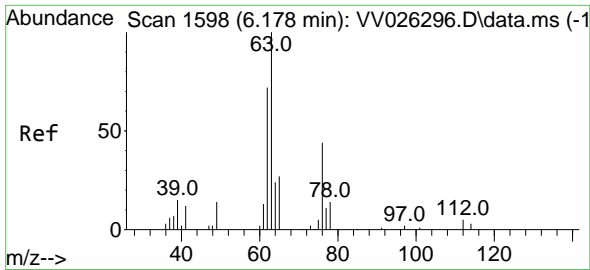


#35
 Methylcyclohexane
 Concen: 0.984 ug/L
 RT: 6.075 min Scan# 1566
 Delta R.T. -0.061 min
 Lab File: VV026311.D
 Acq: 16 Jun 2022 04:54

Tgt Ion: 83 Resp: 19144

Ion	Ratio	Lower	Upper
83	100		
55	0.6	59.3	88.9#
98	0.8	39.9	59.9#

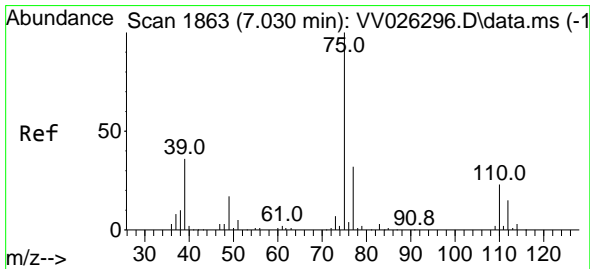
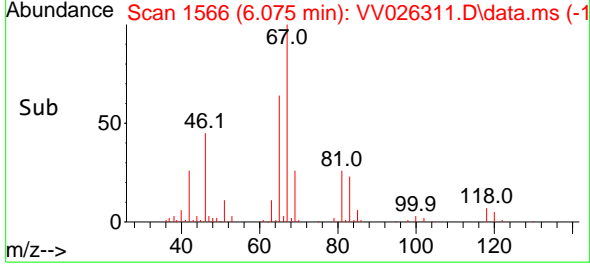
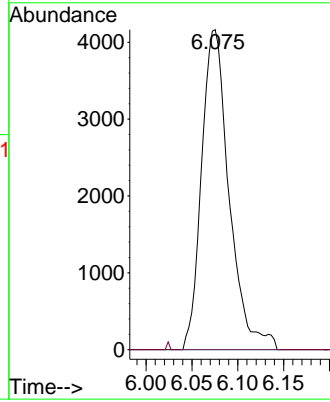
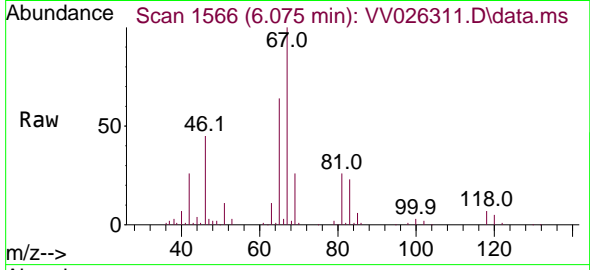




#37
 1,2-Dichloropropane
 Concen: 0.647 ug/L
 RT: 6.075 min Scan# 1111
 Delta R.T. -0.103 min
 Lab File: VV026311.D
 Acq: 16 Jun 2022 04:54

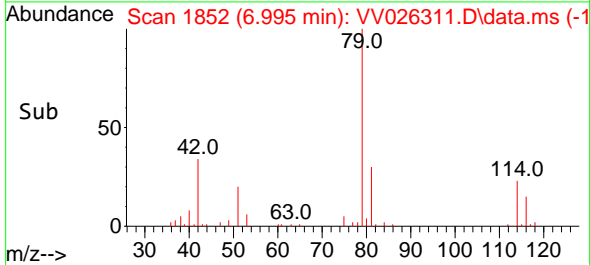
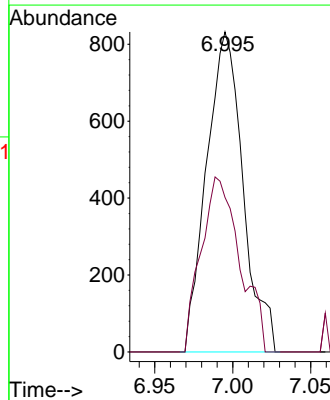
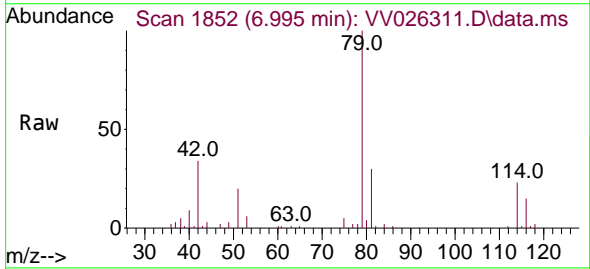
Instrument : MSVOA_V
 ClientSampleId : C0BB9

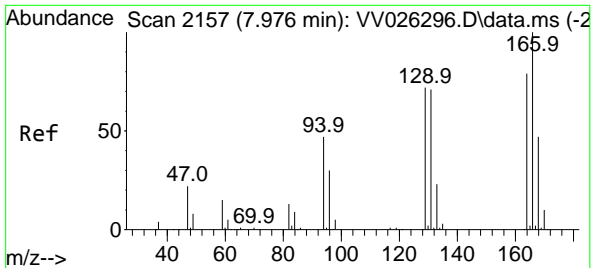
Tgt Ion: 63 Resp: 8716
 Ion Ratio Lower Upper
 63 100
 112 0.2 3.3 4.9#



#39
 cis-1,3-Dichloropropene
 Concen: 0.088 ug/L
 RT: 6.995 min Scan# 1852
 Delta R.T. -0.035 min
 Lab File: VV026311.D
 Acq: 16 Jun 2022 04:54

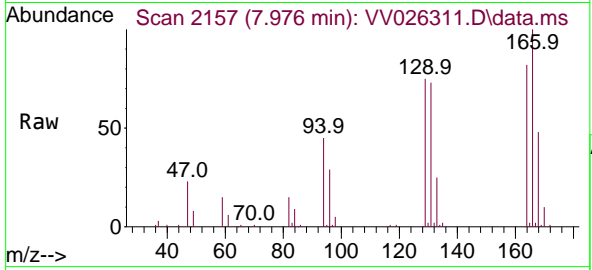
Tgt Ion: 75 Resp: 1352
 Ion Ratio Lower Upper
 75 100
 77 48.3 23.0 42.6#



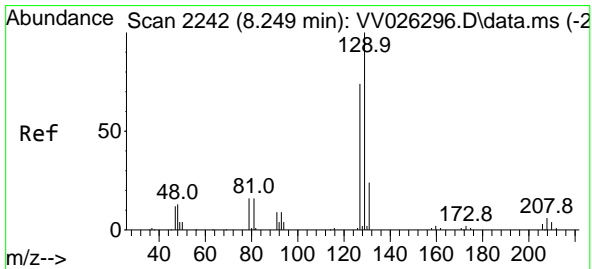
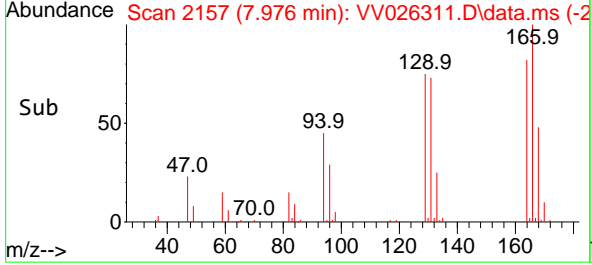
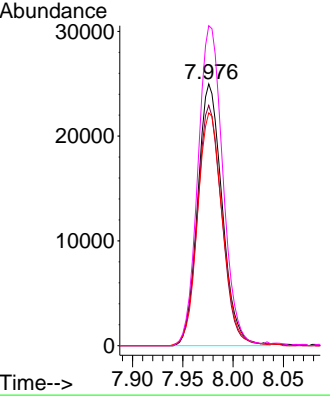


#47
 Tetrachloroethene
 Concen: 4.062 ug/L
 RT: 7.976 min Scan# 2157
 Delta R.T. -0.000 min
 Lab File: VV026311.D
 Acq: 16 Jun 2022 04:54

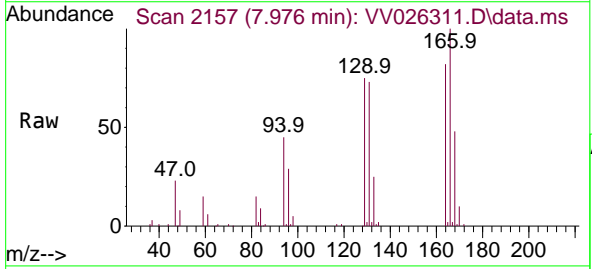
Instrument : MSVOA_V
 ClientSampleId : COBB9



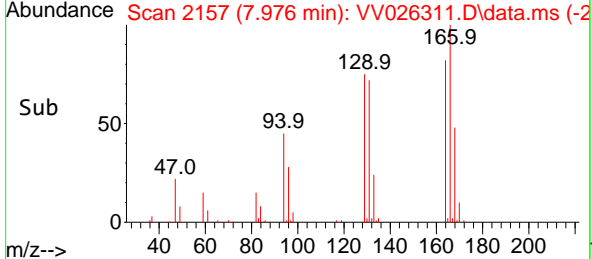
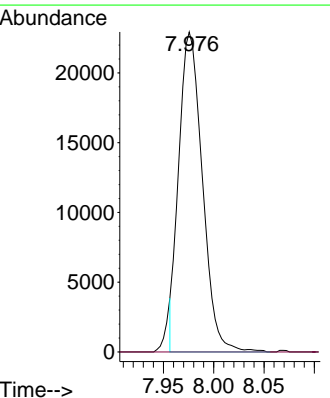
Tgt Ion:164 Resp: 42327
 Ion Ratio Lower Upper
 164 100
 129 91.8 67.5 125.3
 131 89.0 63.8 118.4
 166 122.3 89.5 166.3

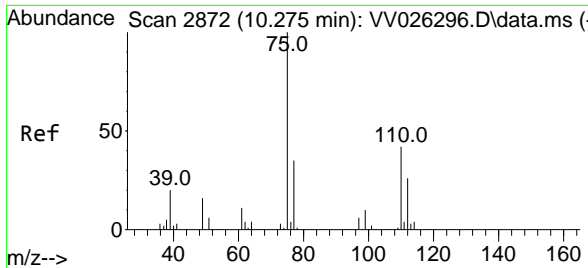


#49
 Dibromochloromethane
 Concen: 3.805 ug/L
 RT: 7.976 min Scan# 2157
 Delta R.T. -0.273 min
 Lab File: VV026311.D
 Acq: 16 Jun 2022 04:54



Tgt Ion:129 Resp: 37279
 Ion Ratio Lower Upper
 129 100
 127 0.0 56.4 104.7#





#61
 1,2,3-Trichloropropane
 Concen: 1.632 ug/L
 RT: 11.246 min Scan# 31
 Delta R.T. 0.971 min
 Lab File: VV026311.D
 Acq: 16 Jun 2022 04:54

Instrument : MSVOA_V
 ClientSampleId : C0BB9

Tgt Ion	Resp	Lower	Upper
75	8676		
75	100		
77	35.0	26.9	40.3
110	1.6	30.7	46.1#

