

Data Path : Z:\voasrv\HPCHEM1\MSVOA_V\Data\VW061822\
 Data File : VW026414.D
 Acq On : 18 Jun 2022 10:48
 Operator : SY/MD
 Sample : VW0618WBL01
 Misc : 25mL/MSVOA_V/WATER
 ALS Vial : 3 Sample Multiplier: 1

Instrument :
 MSVOA_V
 ClientSampleId :
 VBLK379

Quant Time: Jun 20 01:27:16 2022
 Quant Method : Z:\voasrv\HPCHEM1\MSVOA_V\Method\SFAMVTR061522WMA.M
 Quant Title : TRACE VOA SFAM1.0
 QLast Update : Mon Jun 20 01:25:22 2022
 Response via : Initial Calibration

Compound	R.T.	QIon	Response	Conc	Units	Dev(Min)
Internal Standards						
1) 1,4-Difluorobenzene	5.622	114	196228	5.000	ug/L	0.00
28) Chlorobenzene-d5	8.850	117	190733	5.000	ug/L	0.00
58) 1,4-Dichlorobenzene-d4	11.249	152	78004	5.000	ug/L	0.00
System Monitoring Compounds						
4) Vinyl Chloride-d3	1.323	65	74306	4.360	ug/L	0.00
Spiked Amount	5.000	Range 40 - 130	Recovery	=	87.200%	
7) Chloroethane-d5	1.584	69	60762	4.534	ug/L	0.00
Spiked Amount	5.000	Range 65 - 130	Recovery	=	90.600%	
11) 1,1-Dichloroethene-d2	2.124	63	103620	3.540	ug/L	0.00
Spiked Amount	5.000	Range 60 - 125	Recovery	=	70.800%	
20) 2-Butanone-d5	3.928	46	76369	45.921	ug/L	0.02
Spiked Amount	50.000	Range 40 - 130	Recovery	=	91.840%	
24) Chloroform-d	4.362	84	125508	5.024	ug/L	0.00
Spiked Amount	5.000	Range 70 - 125	Recovery	=	100.400%	
26) 1,2-Dichloroethane-d4	5.040	65	52488	4.966	ug/L	0.00
Spiked Amount	5.000	Range 70 - 130	Recovery	=	99.400%	
32) Benzene-d6	5.056	84	242557	4.757	ug/L	0.00
Spiked Amount	5.000	Range 70 - 125	Recovery	=	95.200%	
36) 1,2-Dichloropropane-d6	6.072	67	74783	5.025	ug/L	0.00
Spiked Amount	5.000	Range 60 - 140	Recovery	=	100.400%	
41) Toluene-d8	7.317	98	201403	4.332	ug/L	0.00
Spiked Amount	5.000	Range 70 - 130	Recovery	=	86.600%	
43) trans-1,3-Dichloroprop...	7.625	79	15406	3.192	ug/L	0.00
Spiked Amount	5.000	Range 55 - 130	Recovery	=	63.800%	
46) 2-Hexanone-d5	8.092	63	59834	41.045	ug/L	0.00
Spiked Amount	50.000	Range 45 - 130	Recovery	=	82.080%	
56) 1,1,2,2-Tetrachloroeth...	10.214	84	45647	4.979	ug/L	0.00
Spiked Amount	5.000	Range 65 - 120	Recovery	=	99.600%	
66) 1,2-Dichlorobenzene-d4	11.622	152	63189	5.259	ug/L	0.00
Spiked Amount	5.000	Range 80 - 120	Recovery	=	105.200%	
Target Compounds						
3) Chloromethane	1.259	50	669	0.041	ug/L	92
6) Bromomethane	1.542	94	963	0.102	ug/L	84
8) Chloroethane	1.600	64	13071	1.243	ug/L #	49
12) 1,1-Dichloroethene	2.124	96	1113	0.090	ug/L #	1
14) Carbon disulfide	2.310	76	1945	0.064	ug/L #	94
25) Chloroform	4.391	83	1698	0.068	ug/L	100
35) Methylcyclohexane	6.072	83	17730	0.960	ug/L #	20
37) 1,2-Dichloropropane	6.076	63	7410	0.579	ug/L #	88
39) cis-1,3-Dichloropropene	6.989	75	1298	0.089	ug/L	89
61) 1,2,3-Trichloropropane	11.246	75	8901	1.758	ug/L #	64
62) 1,3,5-Trimethylbenzene	10.918	105	1161	0.035	ug/L	92
68) 1,2-Dibromo-3-chloropr...	12.644	75	170	0.190	ug/L #	3
69) 1,3,5-Trichlorobenzene	12.648	180	1369	0.093	ug/L #	97
70) 1,2,4-trichlorobenzene	13.265	180	1460	0.134	ug/L	94
71) Naphthalene	13.506	128	3866	0.256	ug/L	97
72) 1,2,3-Trichlorobenzene	13.747	180	1611	0.177	ug/L	92

(#) = qualifier out of range (m) = manual integration (+) = signals summed

Instrument :

MSVOA_V

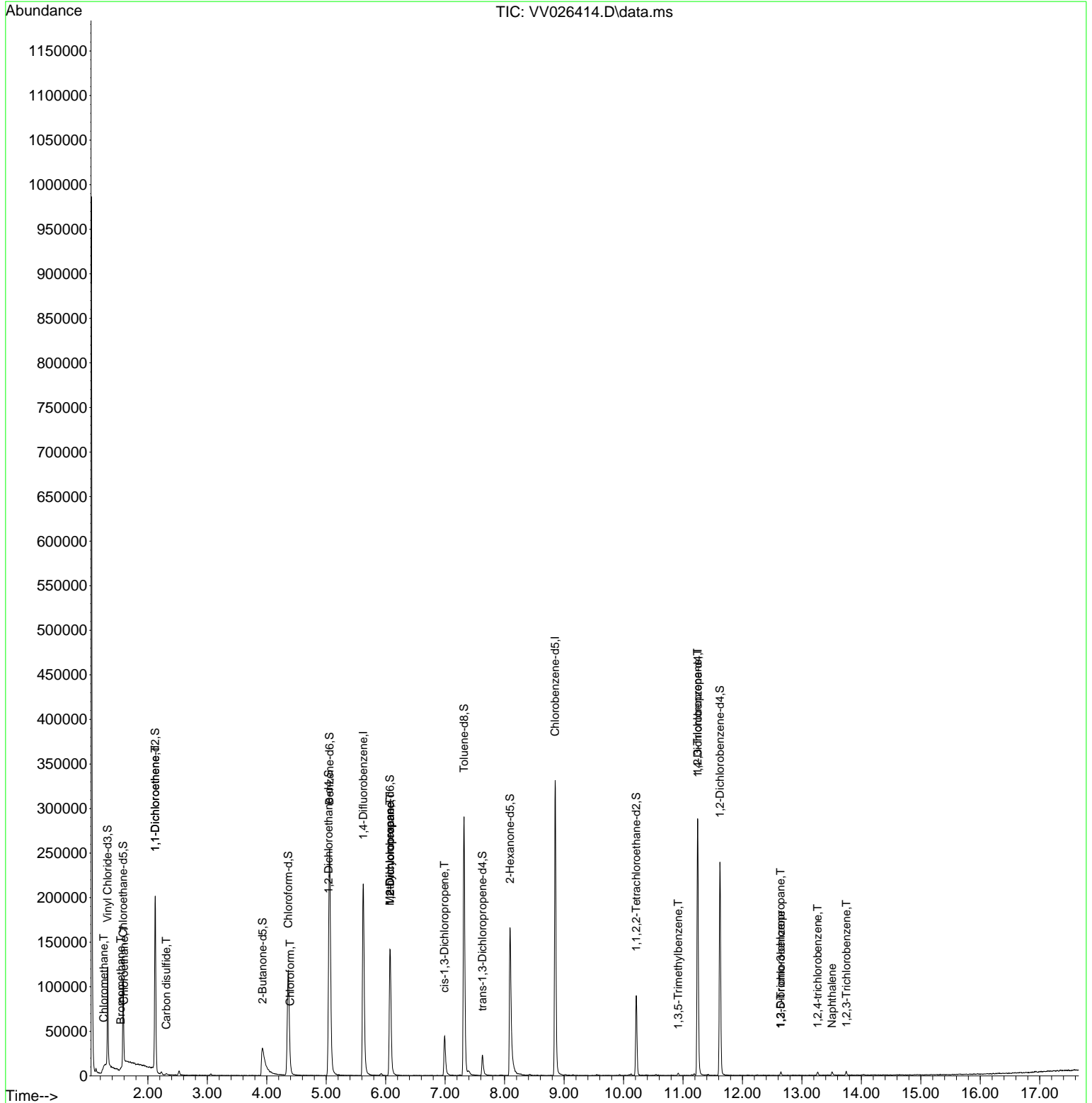
ClientSampleId :

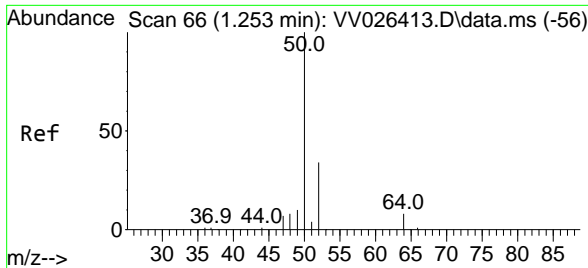
VBLK379

Data Path : Z:\voasrv\HPCHEM1\MSVOA_V\Data\VV061822\
 Data File : VV026414.D
 Acq On : 18 Jun 2022 10:48
 Operator : SY/MD
 Sample : VV0618WBL01
 Misc : 25mL/MSVOA_V/WATER
 ALS Vial : 3 Sample Multiplier: 1

Instrument :
 MSVOA_V
 ClientSampleId :
 VBLK379

Quant Time: Jun 20 01:27:16 2022
 Quant Method : Z:\voasrv\HPCHEM1\MSVOA_V\Method\SFAMVTR061522WMA.M
 Quant Title : TRACE VOA SFAM1.0
 QLast Update : Mon Jun 20 01:25:22 2022
 Response via : Initial Calibration

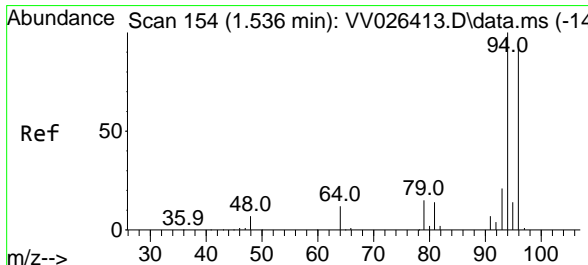
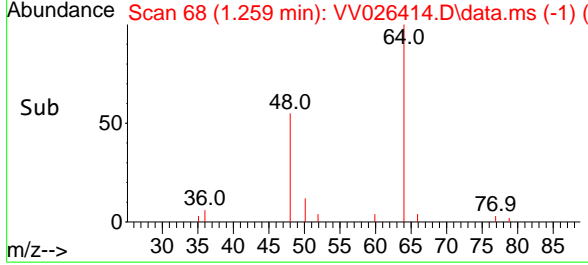
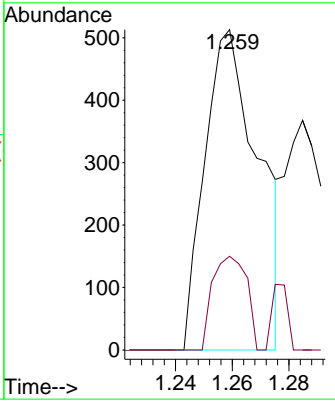
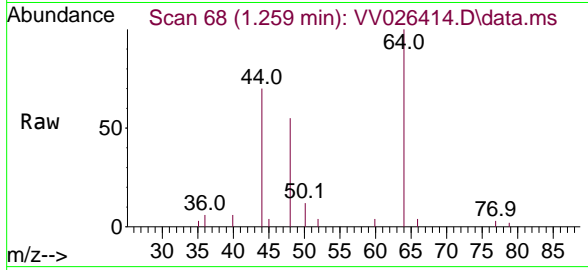




#3
 Chloromethane
 Concen: 0.041 ug/L
 RT: 1.259 min Scan# 61
 Delta R.T. 0.006 min
 Lab File: VV026414.D
 Acq: 18 Jun 2022 10:48

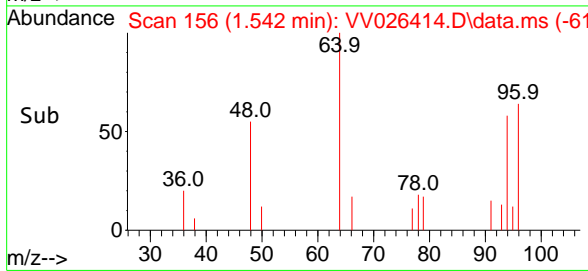
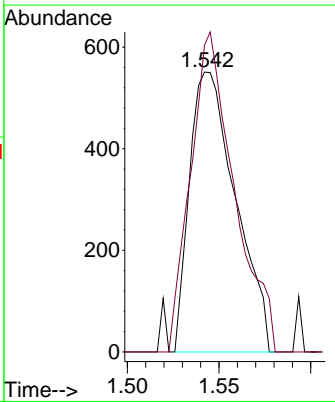
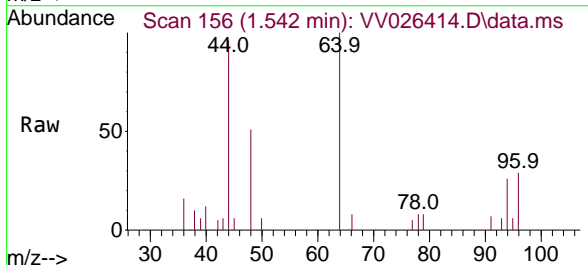
Instrument : MSVOA_V
 ClientSampleId : VBLK379

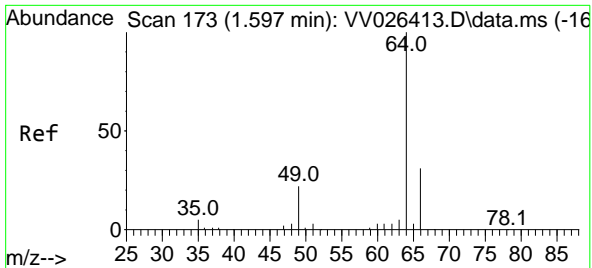
Tgt Ion: 50 Resp: 669
 Ion Ratio Lower Upper
 50 100
 52 29.2 23.7 44.1



#6
 Bromomethane
 Concen: 0.102 ug/L
 RT: 1.542 min Scan# 156
 Delta R.T. 0.006 min
 Lab File: VV026414.D
 Acq: 18 Jun 2022 10:48

Tgt Ion: 94 Resp: 963
 Ion Ratio Lower Upper
 94 100
 96 109.6 65.7 121.9

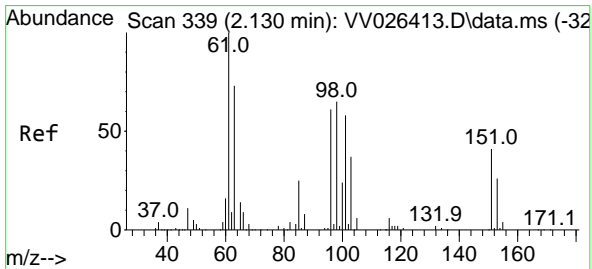
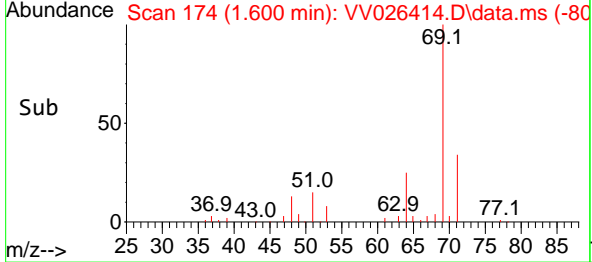
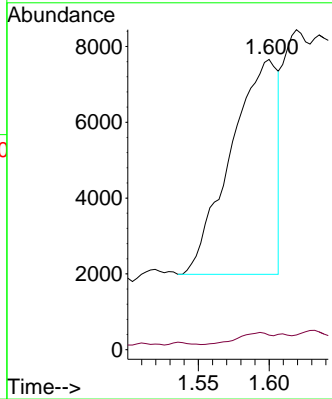
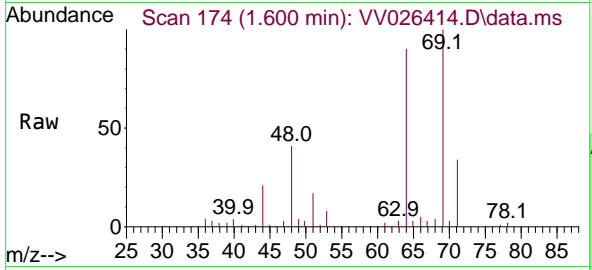




#8
 Chloroethane
 Concen: 1.243 ug/L
 RT: 1.600 min Scan# 11
 Delta R.T. 0.003 min
 Lab File: VV026414.D
 Acq: 18 Jun 2022 10:48

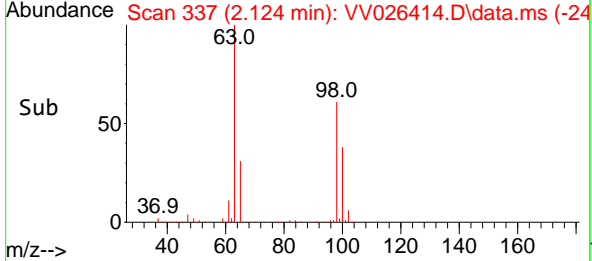
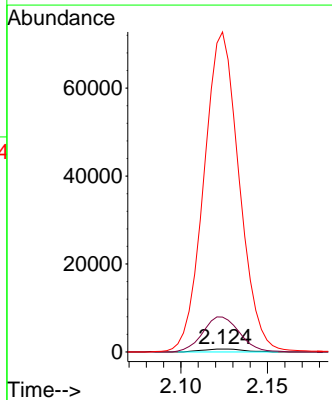
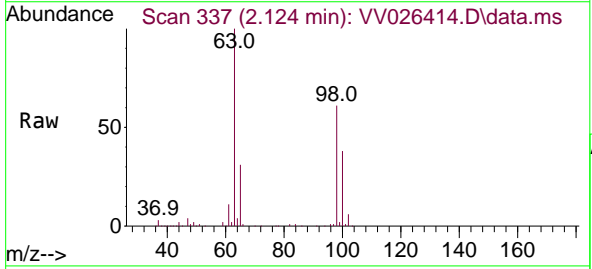
Instrument : MSVOA_V
 ClientSampleId : VBLK379

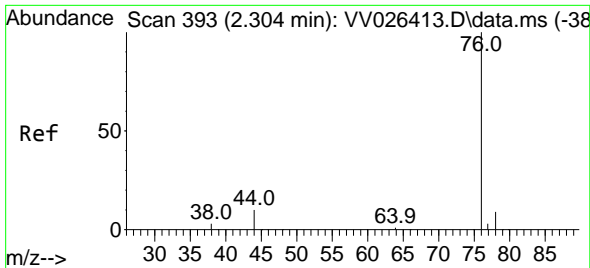
Tgt Ion: 64 Resp: 13071
 Ion Ratio Lower Upper
 64 100
 66 5.0 24.1 44.7#



#12
 1,1-Dichloroethene
 Concen: 0.090 ug/L
 RT: 2.124 min Scan# 337
 Delta R.T. -0.006 min
 Lab File: VV026414.D
 Acq: 18 Jun 2022 10:48

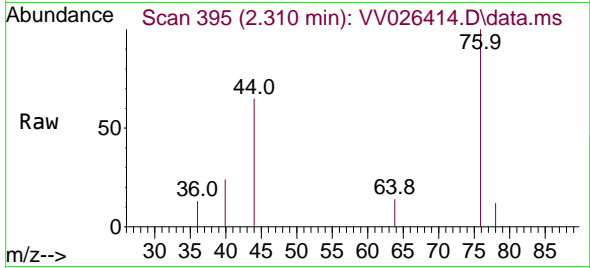
Tgt Ion: 96 Resp: 1113
 Ion Ratio Lower Upper
 96 100
 61 1180.4 117.1 217.5#
 63 10812.5 92.8 172.4#



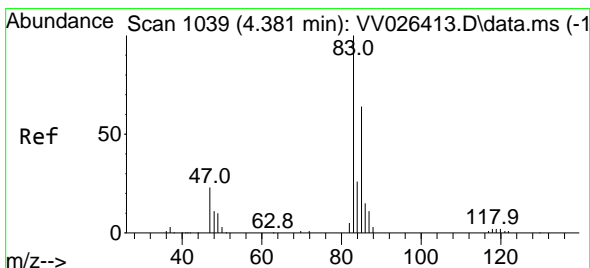
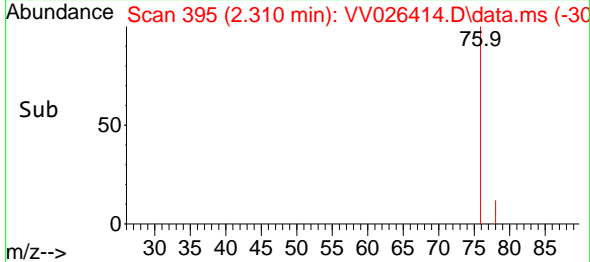
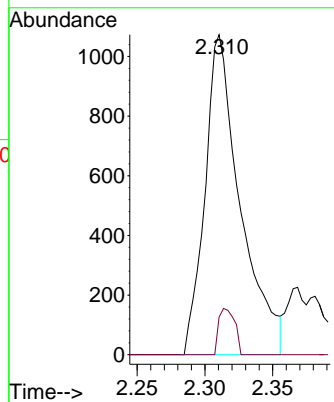


#14
 Carbon disulfide
 Concen: 0.064 ug/L
 RT: 2.310 min Scan# 395
 Delta R.T. 0.006 min
 Lab File: VV026414.D
 Acq: 18 Jun 2022 10:48

Instrument : MSVOA_V
 ClientSampleId : VBLK379

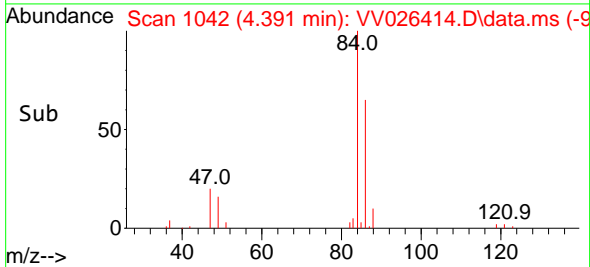
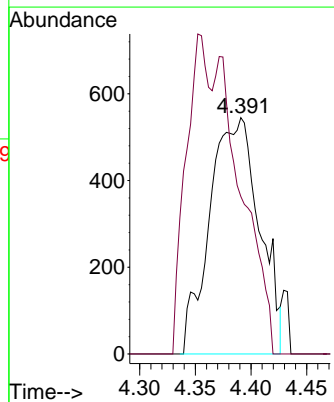
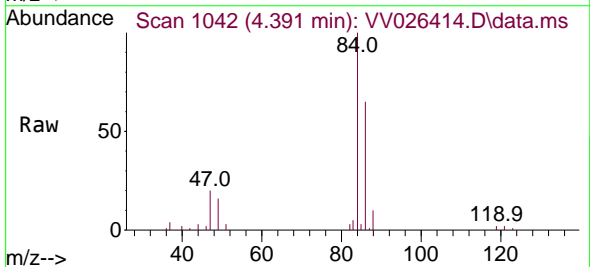


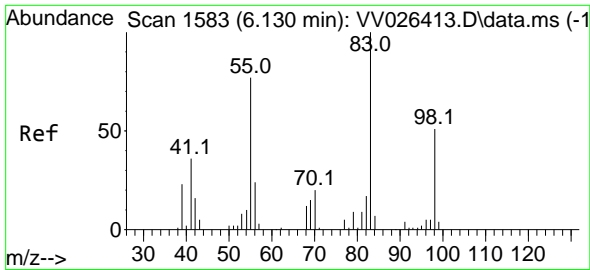
Tgt Ion: 76 Resp: 1945
 Ion Ratio Lower Upper
 76 100
 78 11.7 7.7 11.5#



#25
 Chloroform
 Concen: 0.068 ug/L
 RT: 4.391 min Scan# 1042
 Delta R.T. 0.010 min
 Lab File: VV026414.D
 Acq: 18 Jun 2022 10:48

Tgt Ion: 83 Resp: 1698
 Ion Ratio Lower Upper
 83 100
 85 66.6 46.5 86.3

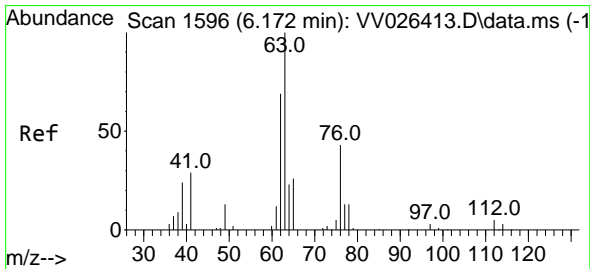
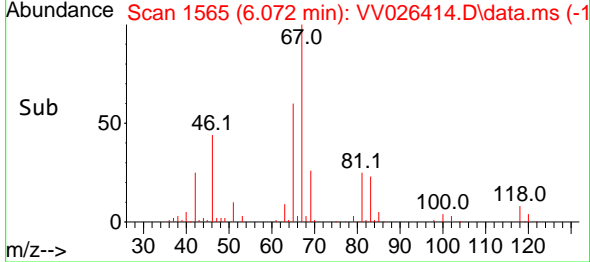
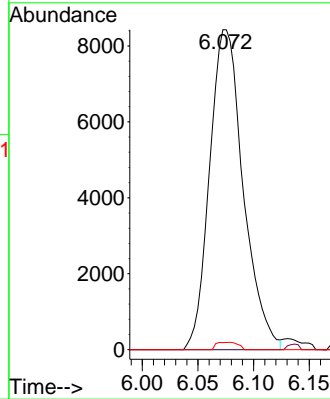
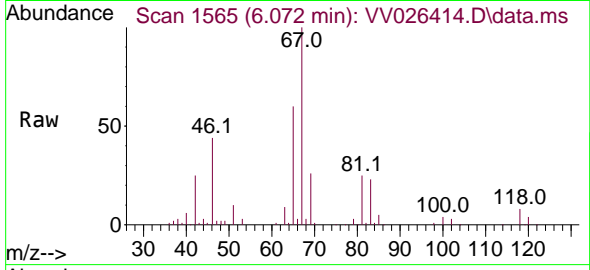




#35
 Methylcyclohexane
 Concen: 0.960 ug/L
 RT: 6.072 min Scan# 1565
 Delta R.T. -0.058 min
 Lab File: VV026414.D
 Acq: 18 Jun 2022 10:48

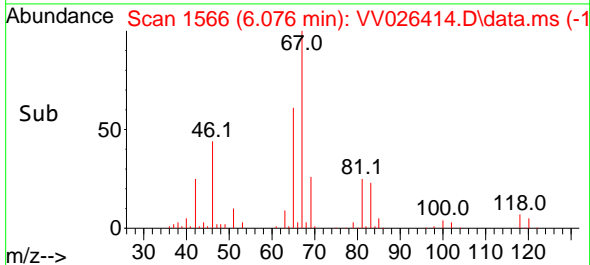
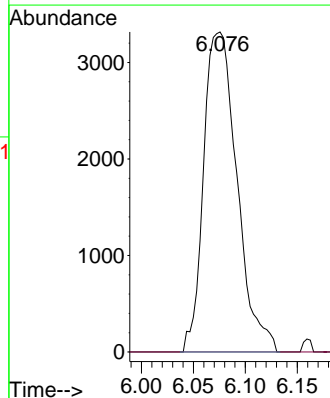
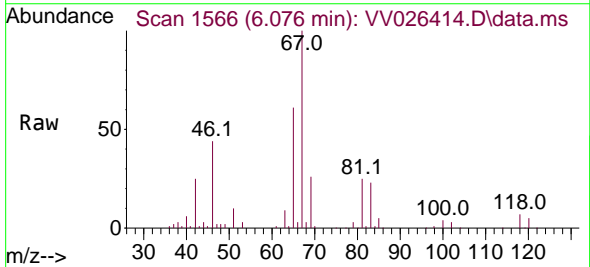
Instrument : MSVOA_V
 ClientSampleId : VBLK379

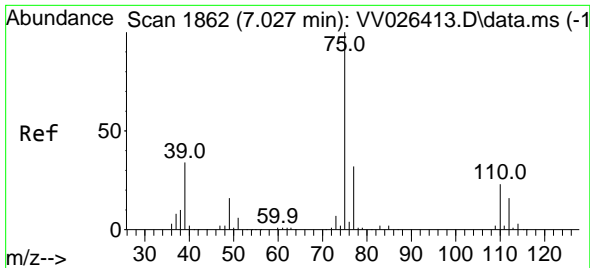
Tgt Ion	Resp	Lower	Upper
83	17730		
55	0.6	59.3	88.9#
98	1.5	39.9	59.9#



#37
 1,2-Dichloropropane
 Concen: 0.579 ug/L
 RT: 6.076 min Scan# 1566
 Delta R.T. -0.096 min
 Lab File: VV026414.D
 Acq: 18 Jun 2022 10:48

Tgt Ion	Resp	Lower	Upper
63	7410		
112	0.0	3.3	4.9#

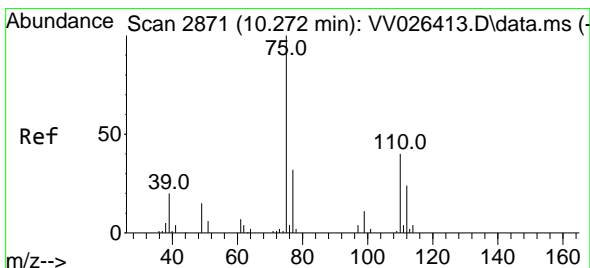
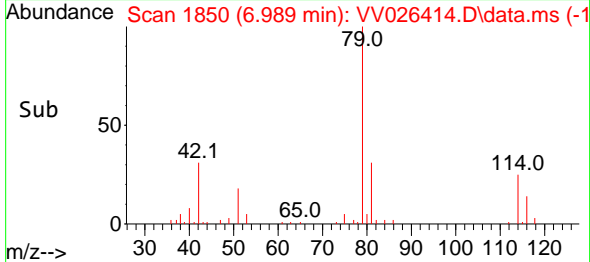
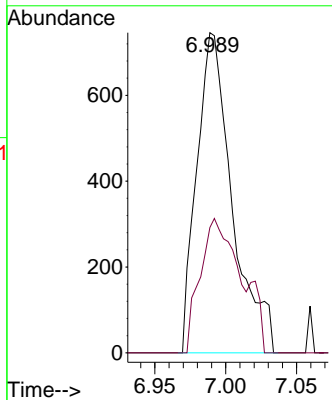
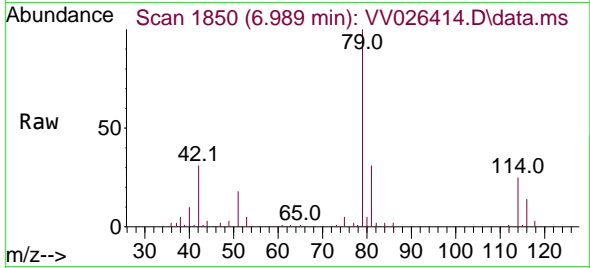




#39
 cis-1,3-Dichloropropene
 Concen: 0.089 ug/L
 RT: 6.989 min Scan# 1111
 Delta R.T. -0.039 min
 Lab File: VV026414.D
 Acq: 18 Jun 2022 10:48

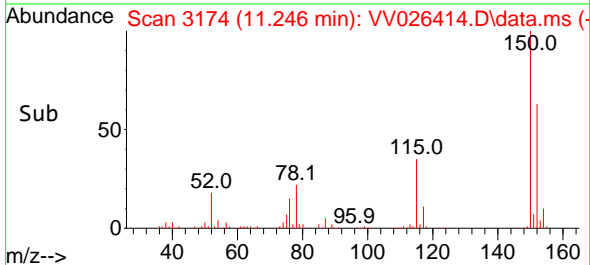
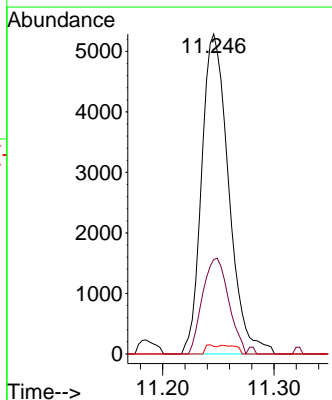
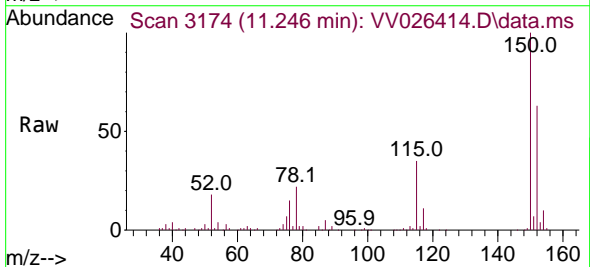
Instrument : MSVOA_V
 ClientSampleId : VBLK379

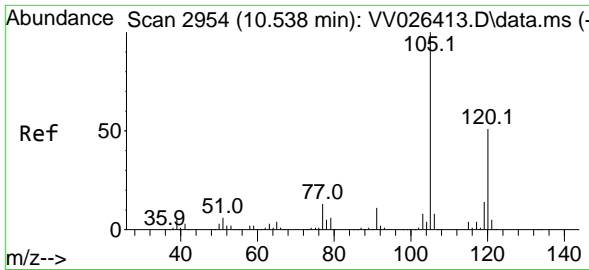
Tgt Ion: 75 Resp: 1298
 Ion Ratio Lower Upper
 75 100
 77 39.1 23.0 42.6



#61
 1,2,3-Trichloropropane
 Concen: 1.758 ug/L
 RT: 11.246 min Scan# 3174
 Delta R.T. 0.974 min
 Lab File: VV026414.D
 Acq: 18 Jun 2022 10:48

Tgt Ion: 75 Resp: 8901
 Ion Ratio Lower Upper
 75 100
 77 28.9 26.9 40.3
 110 1.7 30.7 46.1#

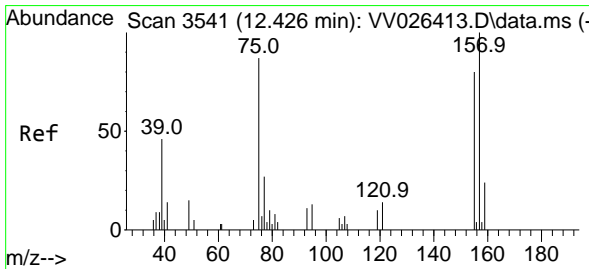
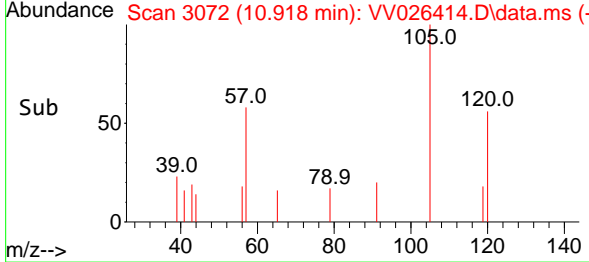
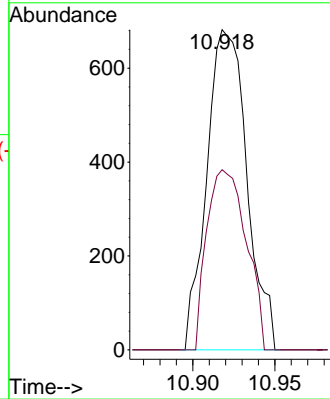
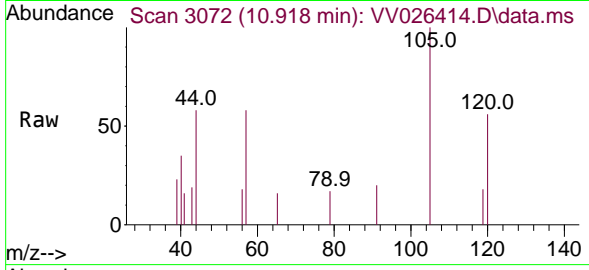




#62
 1,3,5-Trimethylbenzene
 Concen: 0.035 ug/L
 RT: 10.918 min Scan# 3072
 Delta R.T. 0.379 min
 Lab File: VV026414.D
 Acq: 18 Jun 2022 10:48

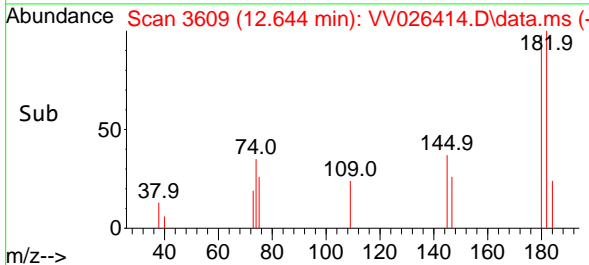
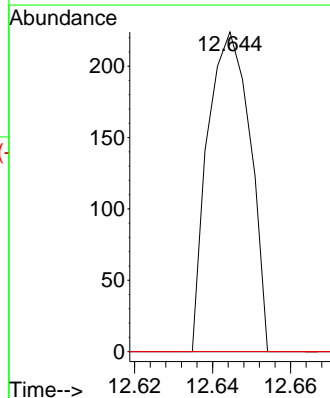
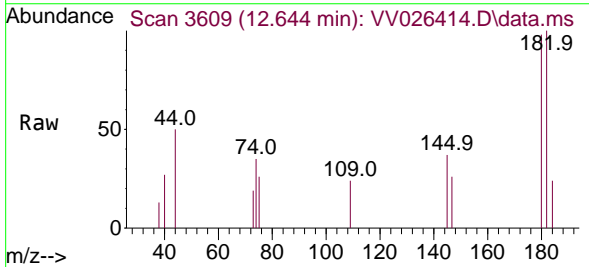
Instrument :
 MSVOA_V
 ClientSampleId :
 VBLK379

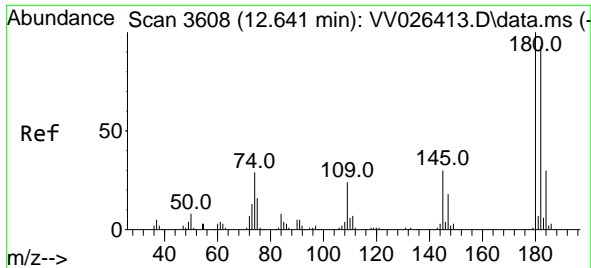
Tgt Ion:105 Resp: 1161
 Ion Ratio Lower Upper
 105 100
 120 55.2 39.9 59.9



#68
 1,2-Dibromo-3-chloropropane
 Concen: 0.190 ug/L
 RT: 12.644 min Scan# 3609
 Delta R.T. 0.219 min
 Lab File: VV026414.D
 Acq: 18 Jun 2022 10:48

Tgt Ion: 75 Resp: 170
 Ion Ratio Lower Upper
 75 100
 155 0.0 63.7 95.5#
 157 0.0 85.0 127.6#



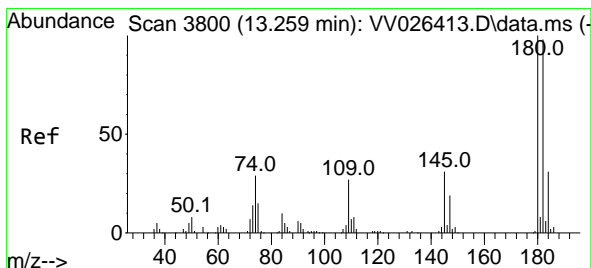
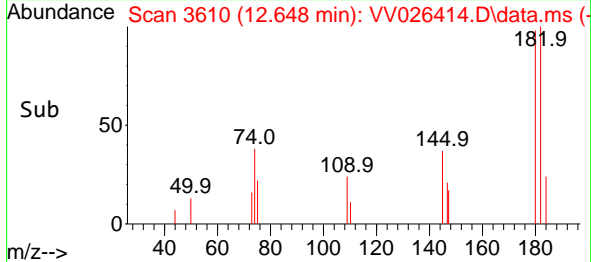
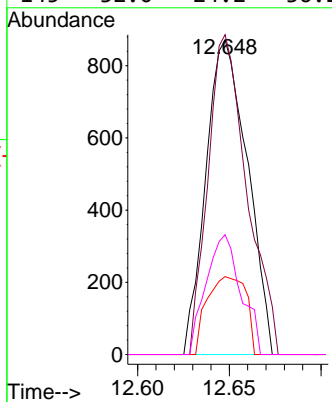
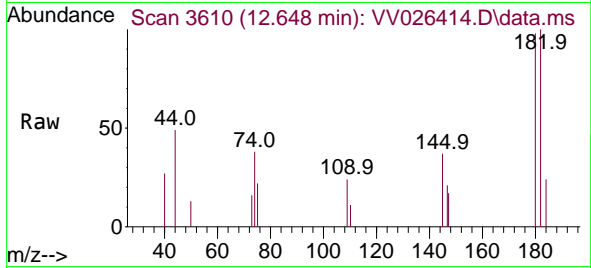


#69
 1,3,5-Trichlorobenzene
 Concen: 0.093 ug/L
 RT: 12.648 min Scan# 3002
 Delta R.T. 0.006 min
 Lab File: VV026414.D
 Acq: 18 Jun 2022 10:48

Instrument :
 MSVOA_V
 ClientSampleId :
 VBLK379

Tgt Ion:180 Resp: 1369

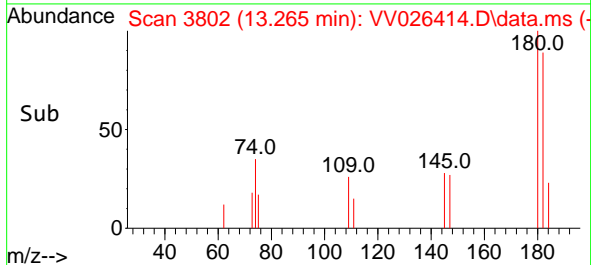
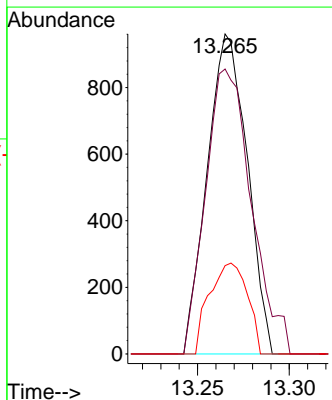
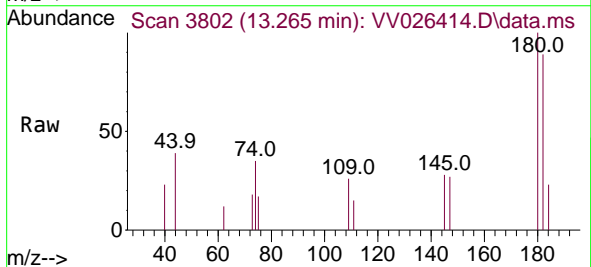
Ion	Ratio	Lower	Upper
180	100		
182	95.2	75.5	113.3
184	23.2	23.7	35.5#
145	32.0	24.2	36.2

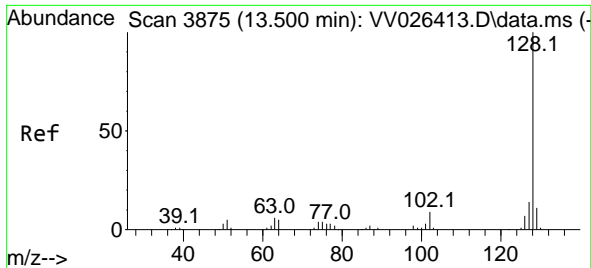


#70
 1,2,4-trichlorobenzene
 Concen: 0.134 ug/L
 RT: 13.265 min Scan# 3802
 Delta R.T. 0.006 min
 Lab File: VV026414.D
 Acq: 18 Jun 2022 10:48

Tgt Ion:180 Resp: 1460

Ion	Ratio	Lower	Upper
180	100		
182	101.6	76.2	114.2
145	26.9	23.9	35.9

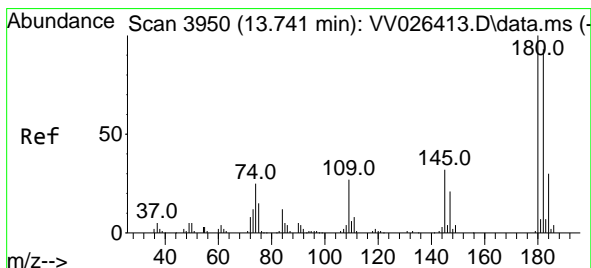
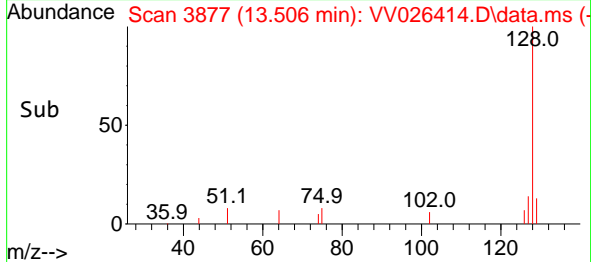
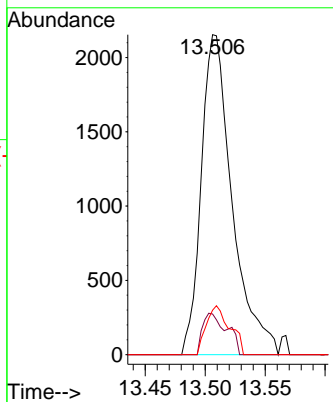
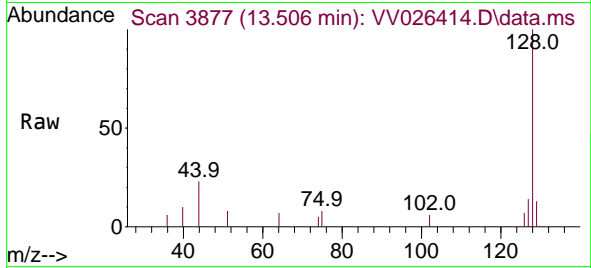




#71
 Naphthalene
 Concen: 0.256 ug/L
 RT: 13.506 min Scan# 3877
 Delta R.T. 0.006 min
 Lab File: VV026414.D
 Acq: 18 Jun 2022 10:48

Instrument : MSVOA_V
 ClientSampleId : VBLK379

Tgt Ion	Resp	Lower	Upper
128	100		
129	10.1	8.7	13.1
127	11.6	10.6	16.0



#72
 1,2,3-Trichlorobenzene
 Concen: 0.177 ug/L
 RT: 13.747 min Scan# 3952
 Delta R.T. 0.006 min
 Lab File: VV026414.D
 Acq: 18 Jun 2022 10:48

Tgt Ion	Resp	Lower	Upper
180	100		
182	88.7	77.9	116.9
145	29.4	26.7	40.1

