

Data Path : Z:\voasrv\HPCHEM1\MSVOA_V\Data\VW061822\
 Data File : VW026432.D
 Acq On : 18 Jun 2022 19:11
 Operator : SY/MD
 Sample : N3358-17
 Misc : 25mL/MSVOA_V/WATER
 ALS Vial : 21 Sample Multiplier: 1

Instrument :
 MSVOA_V
 ClientSampleId :
 EW4T0

Quant Time: Jun 20 01:31:35 2022
 Quant Method : Z:\voasrv\HPCHEM1\MSVOA_V\Method\SFAMVTR061522WMA.M
 Quant Title : TRACE VOA SFAM1.0
 QLast Update : Mon Jun 20 01:25:22 2022
 Response via : Initial Calibration

Compound	R.T.	QIon	Response	Conc	Units	Dev(Min)

Internal Standards						
1) 1,4-Difluorobenzene	5.606	114	275439	5.000	ug/L	-0.01
28) Chlorobenzene-d5	8.860	117	220320	5.000	ug/L	0.00
58) 1,4-Dichlorobenzene-d4	11.249	152	100118	5.000	ug/L	0.00
System Monitoring Compounds						
4) Vinyl Chloride-d3	1.320	65	89531	3.742	ug/L	0.00
Spiked Amount	5.000	Range 40 - 130	Recovery =	74.800%		
7) Chloroethane-d5	1.580	69	74159	3.942	ug/L	0.00
Spiked Amount	5.000	Range 65 - 130	Recovery =	78.800%		
11) 1,1-Dichloroethene-d2	2.117	63	128473	3.127	ug/L	0.00
Spiked Amount	5.000	Range 60 - 125	Recovery =	62.600%		
20) 2-Butanone-d5	3.969	46	122465	52.461	ug/L	0.06
Spiked Amount	50.000	Range 40 - 130	Recovery =	104.920%		
24) Chloroform-d	4.371	84	167999	4.791	ug/L	0.02
Spiked Amount	5.000	Range 70 - 125	Recovery =	95.800%		
26) 1,2-Dichloroethane-d4	5.043	65	71319	4.807	ug/L	0.00
Spiked Amount	5.000	Range 70 - 130	Recovery =	96.200%		
32) Benzene-d6	5.050	84	350190	5.945	ug/L	0.00
Spiked Amount	5.000	Range 70 - 125	Recovery =	119.000%		
36) 1,2-Dichloropropane-d6	6.059	67	98214	5.713	ug/L	-0.01
Spiked Amount	5.000	Range 60 - 140	Recovery =	114.200%		
41) Toluene-d8	7.329	98	307292	5.721	ug/L	0.02
Spiked Amount	5.000	Range 70 - 130	Recovery =	114.400%		
43) trans-1,3-Dichloroprop...	7.638	79	26154	4.692	ug/L	0.02
Spiked Amount	5.000	Range 55 - 130	Recovery =	93.800%		
46) 2-Hexanone-d5	8.120	63	73622	43.721	ug/L	0.03
Spiked Amount	50.000	Range 45 - 130	Recovery =	87.440%		
56) 1,1,2,2-Tetrachloroeth...	10.220	84	50364	4.756	ug/L	0.00
Spiked Amount	5.000	Range 65 - 120	Recovery =	95.200%		
66) 1,2-Dichlorobenzene-d4	11.625	152	95413	6.187	ug/L	0.00
Spiked Amount	5.000	Range 80 - 120	Recovery =	123.800%#		
Target Compounds						
						Qvalue
3) Chloromethane	1.252	50	8342	0.365	ug/L	96
6) Bromomethane	1.535	94	1200	0.090	ug/L	91
14) Carbon disulfide	2.307	76	46841	1.092	ug/L	97
27) 1,2-Dichloroethane	5.056	62	2384	0.150	ug/L	96
35) Methylcyclohexane	6.059	83	24397	1.144	ug/L #	20
37) 1,2-Dichloropropane	6.059	63	11744	0.795	ug/L #	89
39) cis-1,3-Dichloropropene	6.995	75	2057	0.122	ug/L #	28
44) trans-1,3-Dichloropropene	7.638	75	1169	0.087	ug/L #	52
52) Ethylbenzene	9.021	91	4981	0.084	ug/L	99
53) m,p-Xylene	9.146	106	6182	0.266	ug/L	96
57) 1,1,2,2-Tetrachloroethane	10.345	83	4640	0.472	ug/L #	1
60) Isopropylbenzene	10.451	105	3149	0.059	ug/L	96
61) 1,2,3-Trichloropropane	11.249	75	11498	1.770	ug/L #	67
62) 1,3,5-Trimethylbenzene	10.545	105	1654	0.039	ug/L	88
63) 1,2,4-Trimethylbenzene	10.914	105	5430	0.130	ug/L	98
71) Naphthalene	13.503	128	10678	0.550	ug/L #	95

(#) = qualifier out of range (m) = manual integration (+) = signals summed

Instrument :

MSVOA_V

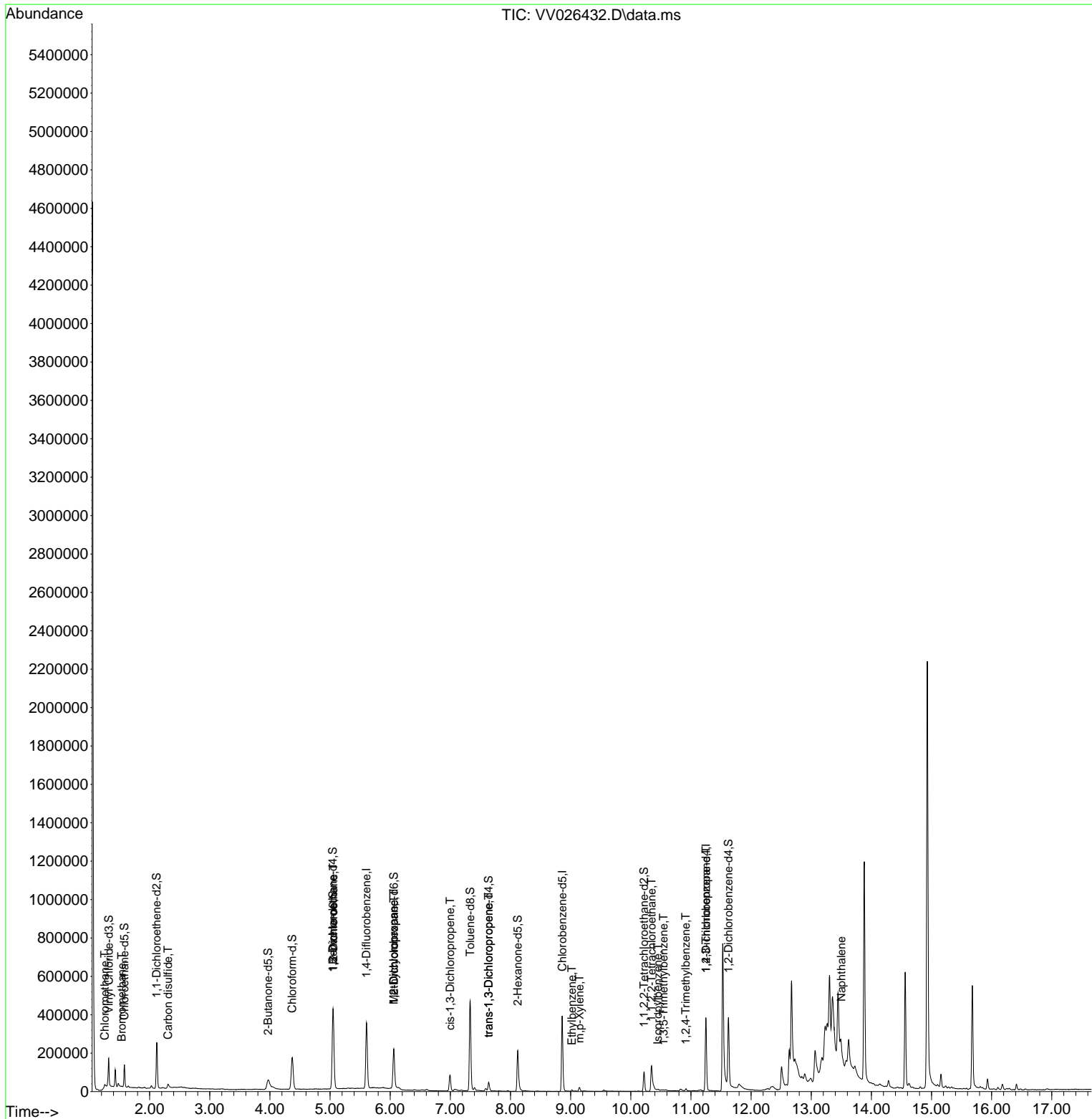
ClientSampleId :

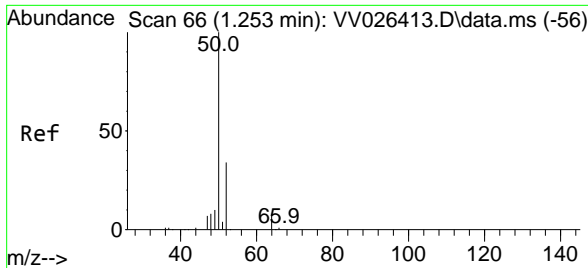
EW4T0

Data Path : Z:\voasrv\HPCHEM1\MSVOA_V\Data\VV061822\
 Data File : VV026432.D
 Acq On : 18 Jun 2022 19:11
 Operator : SY/MD
 Sample : N3358-17
 Misc : 25mL/MSVOA_V/WATER
 ALS Vial : 21 Sample Multiplier: 1

Instrument :
 MSVOA_V
 ClientSampleId :
 EW4T0

Quant Time: Jun 20 01:31:35 2022
 Quant Method : Z:\voasrv\HPCHEM1\MSVOA_V\Method\SFAMVTR061522WMA.M
 Quant Title : TRACE VOA SFAM1.0
 QLast Update : Mon Jun 20 01:25:22 2022
 Response via : Initial Calibration

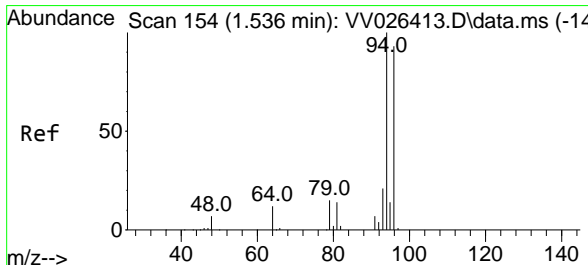
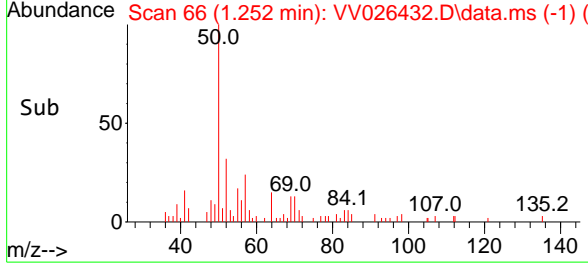
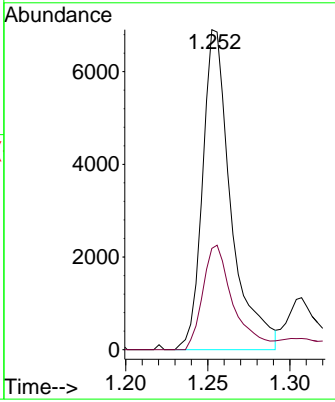
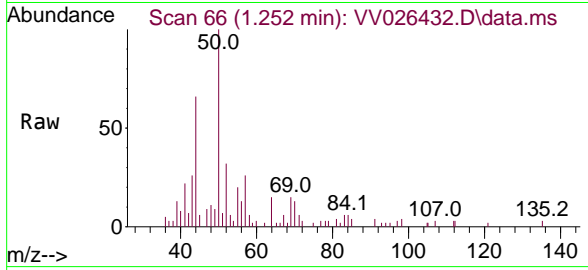




#3
 Chloromethane
 Concen: 0.365 ug/L
 RT: 1.252 min Scan# 60
 Delta R.T. -0.000 min
 Lab File: VV026432.D
 Acq: 18 Jun 2022 19:11

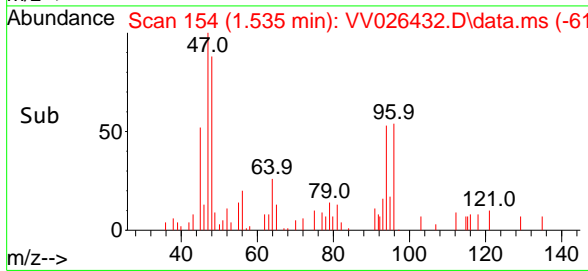
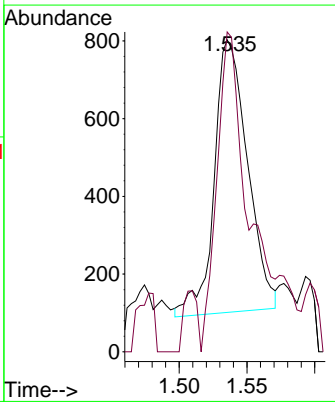
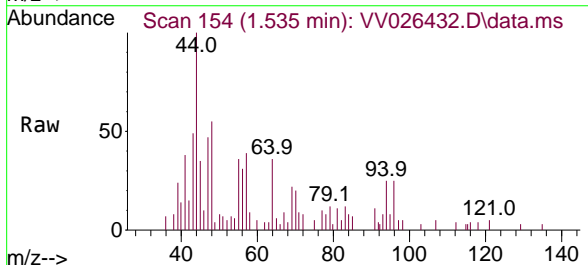
Instrument : MSVOA_V
 ClientSampleId : EW4T0

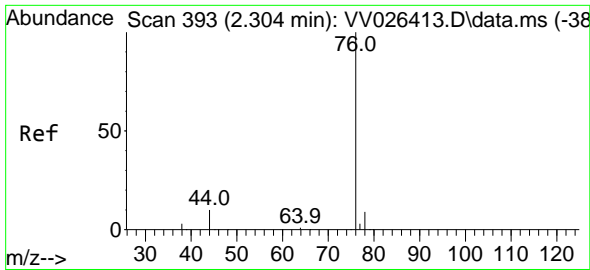
Tgt Ion: 50 Resp: 8342
 Ion Ratio Lower Upper
 50 100
 52 31.7 23.7 44.1



#6
 Bromomethane
 Concen: 0.090 ug/L
 RT: 1.535 min Scan# 154
 Delta R.T. -0.000 min
 Lab File: VV026432.D
 Acq: 18 Jun 2022 19:11

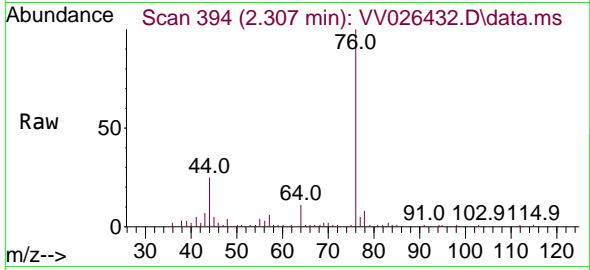
Tgt Ion: 94 Resp: 1200
 Ion Ratio Lower Upper
 94 100
 96 102.5 65.7 121.9



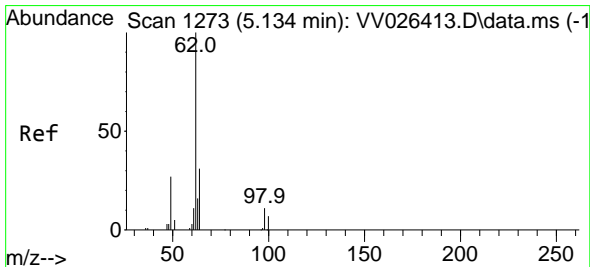
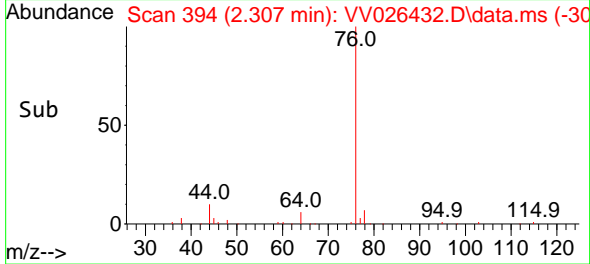
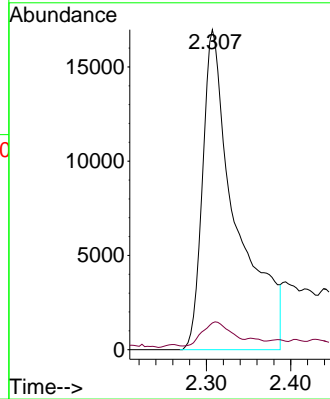


#14
 Carbon disulfide
 Concen: 1.092 ug/L
 RT: 2.307 min Scan# 394
 Delta R.T. 0.003 min
 Lab File: VV026432.D
 Acq: 18 Jun 2022 19:11

Instrument : MSVOA_V
 ClientSampleId : EW4T0

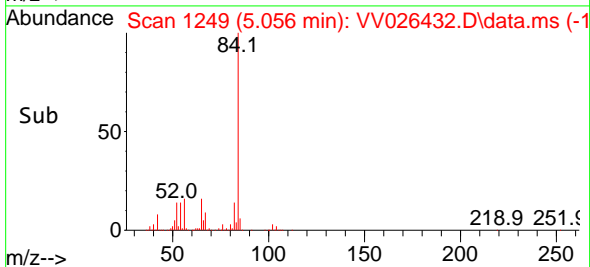
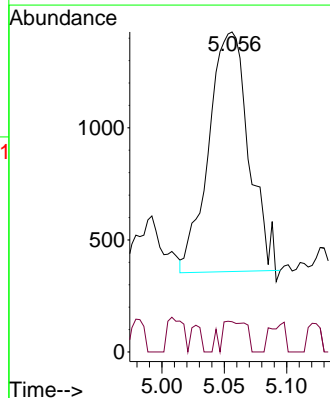
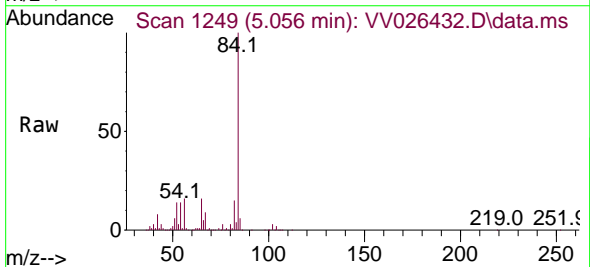


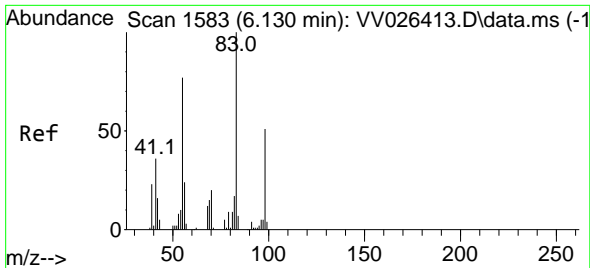
Tgt Ion: 76 Resp: 46841
 Ion Ratio Lower Upper
 76 100
 78 8.4 7.7 11.5



#27
 1,2-Dichloroethane
 Concen: 0.150 ug/L
 RT: 5.056 min Scan# 1249
 Delta R.T. -0.077 min
 Lab File: VV026432.D
 Acq: 18 Jun 2022 19:11

Tgt Ion: 62 Resp: 2384
 Ion Ratio Lower Upper
 62 100
 98 9.5 8.6 13.0

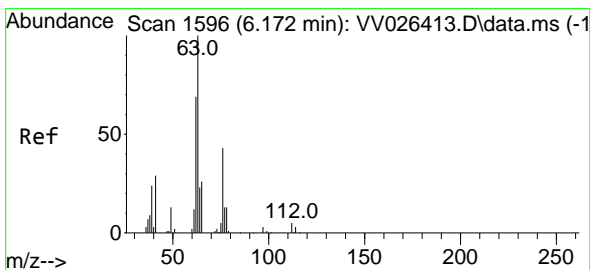
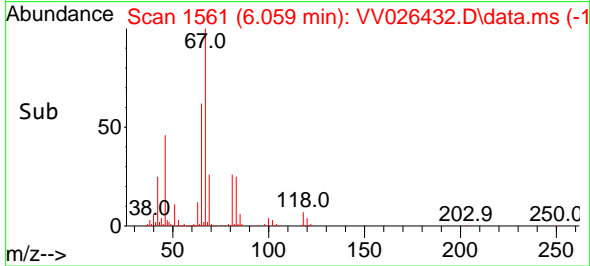
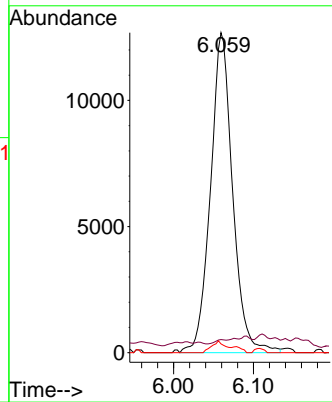
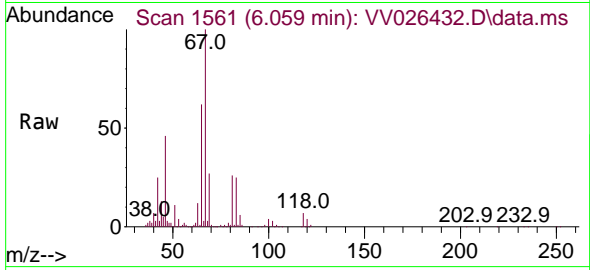




#35
 Methylcyclohexane
 Concen: 1.144 ug/L
 RT: 6.059 min Scan# 1561
 Delta R.T. -0.071 min
 Lab File: VV026432.D
 Acq: 18 Jun 2022 19:11

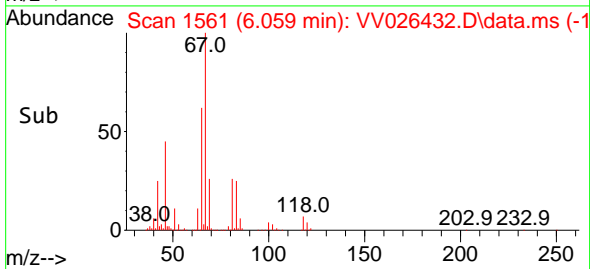
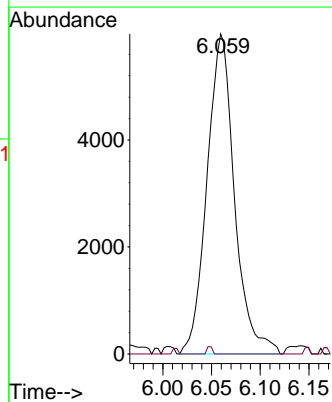
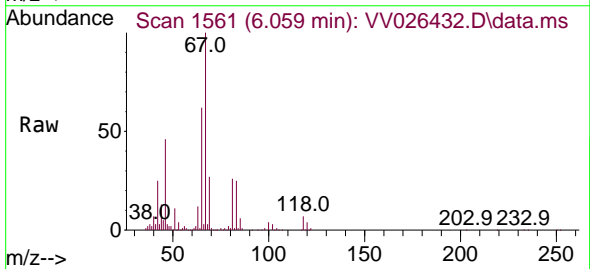
Instrument : MSVOA_V
 ClientSampleId : EW4T0

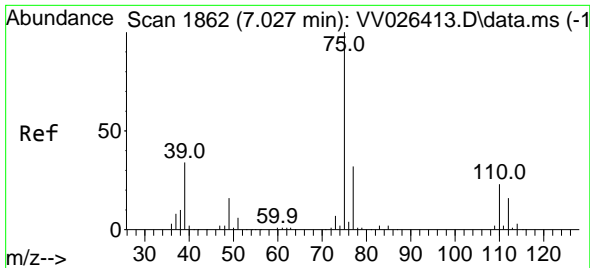
Tgt Ion	Resp	Lower	Upper
83	24397		
55	0.6	59.3	88.9#
98	2.3	39.9	59.9#



#37
 1,2-Dichloropropane
 Concen: 0.795 ug/L
 RT: 6.059 min Scan# 1561
 Delta R.T. -0.113 min
 Lab File: VV026432.D
 Acq: 18 Jun 2022 19:11

Tgt Ion	Resp	Lower	Upper
63	11744		
112	0.4	3.3	4.9#

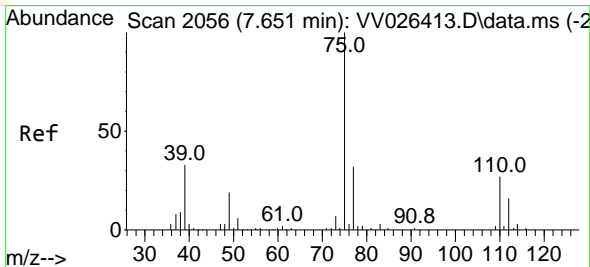
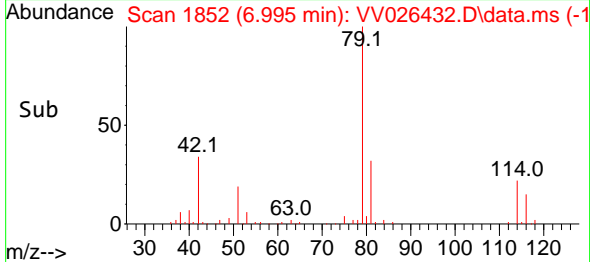
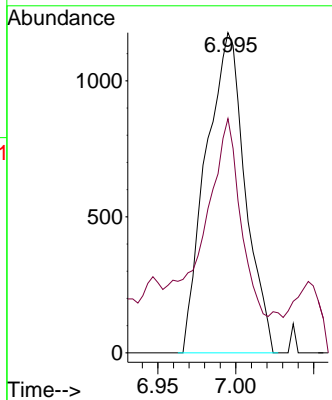
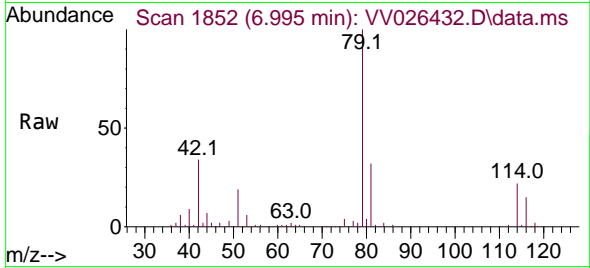




#39
 cis-1,3-Dichloropropene
 Concen: 0.122 ug/L
 RT: 6.995 min Scan# 1862
 Delta R.T. -0.032 min
 Lab File: VV026432.D
 Acq: 18 Jun 2022 19:11

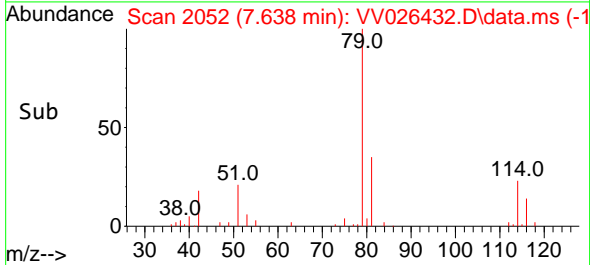
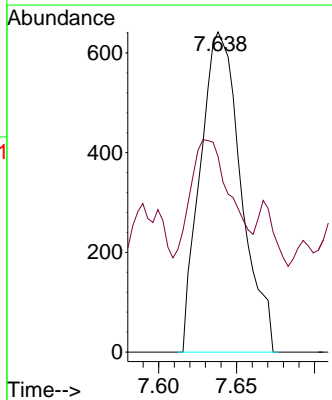
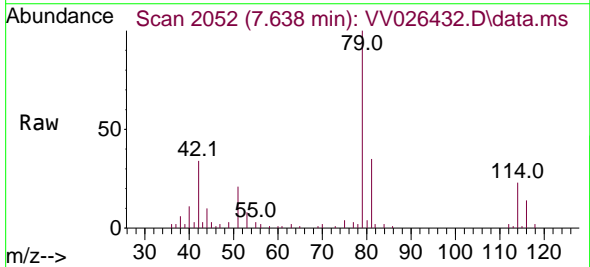
Instrument : MSVOA_V
 ClientSampleId : EW4T0

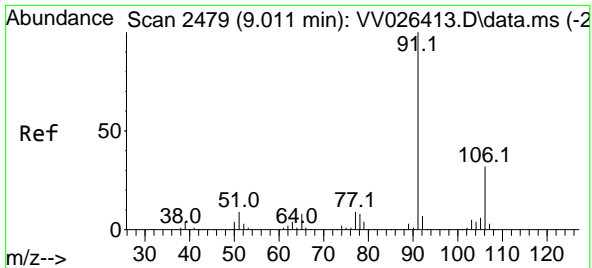
Tgt Ion: 75 Resp: 2057
 Ion Ratio Lower Upper
 75 100
 77 73.2 23.0 42.6#



#44
 trans-1,3-Dichloropropene
 Concen: 0.087 ug/L
 RT: 7.638 min Scan# 2052
 Delta R.T. -0.013 min
 Lab File: VV026432.D
 Acq: 18 Jun 2022 19:11

Tgt Ion: 75 Resp: 1169
 Ion Ratio Lower Upper
 75 100
 77 61.1 23.7 43.9#

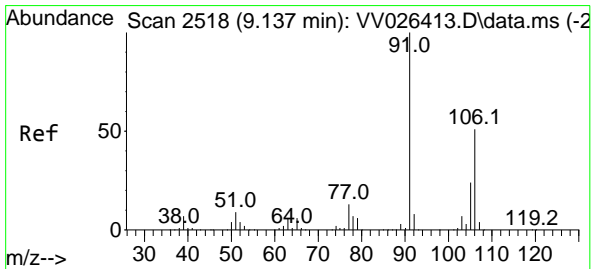
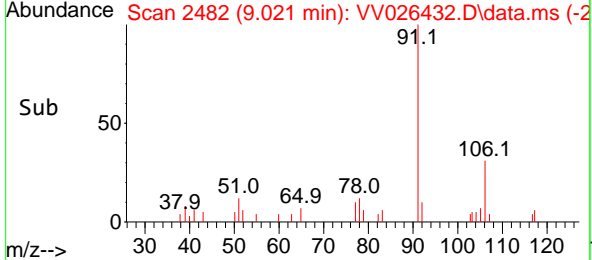
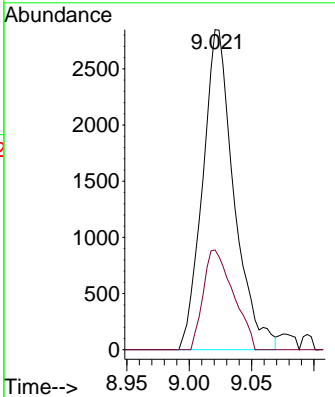
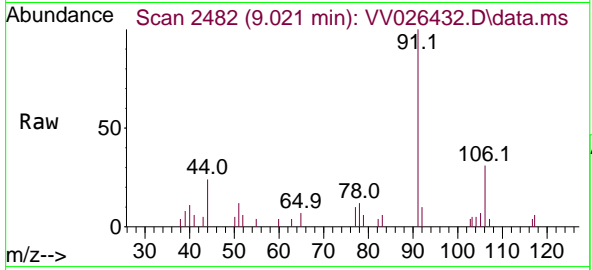




#52
 Ethylbenzene
 Concen: 0.084 ug/L
 RT: 9.021 min Scan# 2479
 Delta R.T. 0.009 min
 Lab File: VV026432.D
 Acq: 18 Jun 2022 19:11

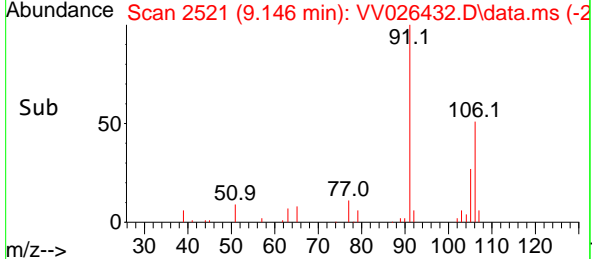
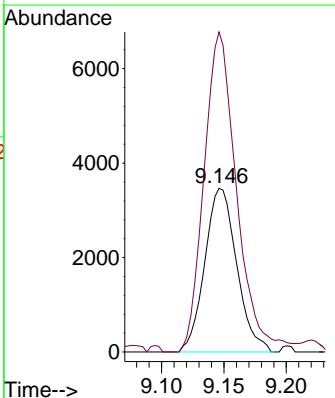
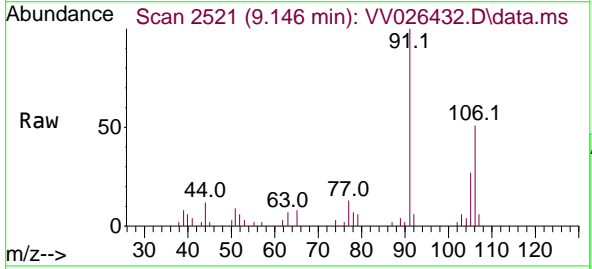
Instrument : MSVOA_V
 ClientSampleId : EW4T0

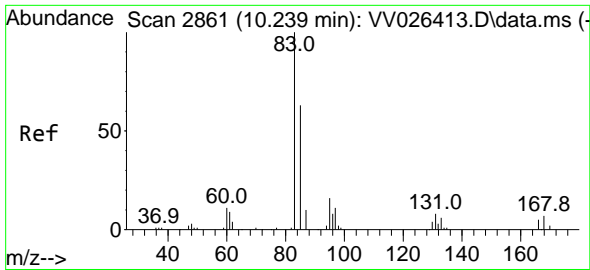
Tgt Ion: 91 Resp: 4981
 Ion Ratio Lower Upper
 91 100
 106 31.2 21.6 40.0



#53
 m,p-Xylene
 Concen: 0.266 ug/L
 RT: 9.146 min Scan# 2521
 Delta R.T. 0.009 min
 Lab File: VV026432.D
 Acq: 18 Jun 2022 19:11

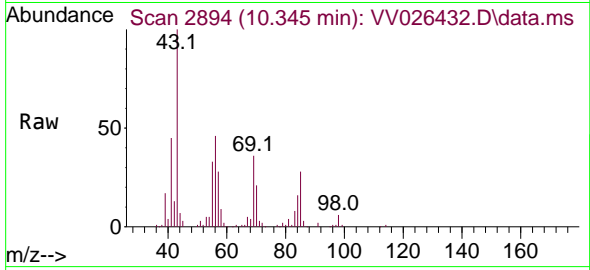
Tgt Ion: 106 Resp: 6182
 Ion Ratio Lower Upper
 106 100
 91 195.6 141.3 262.3



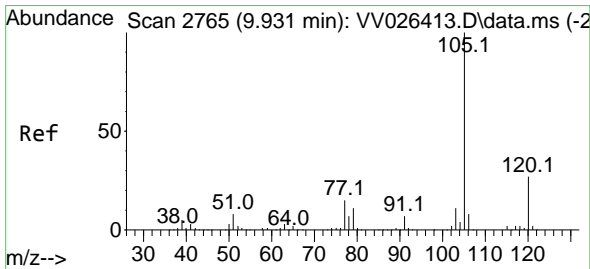
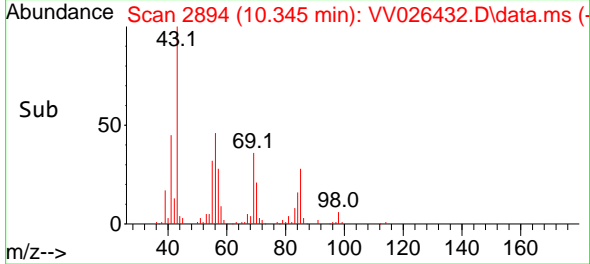
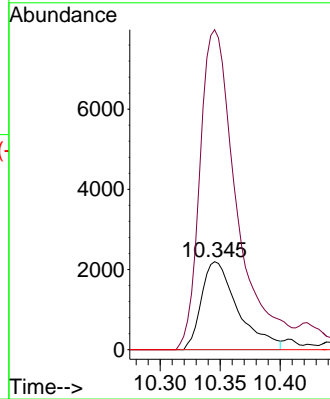


#57
 1,1,2,2-Tetrachloroethane
 Concen: 0.472 ug/L
 RT: 10.345 min Scan# 21
 Delta R.T. 0.106 min
 Lab File: VV026432.D
 Acq: 18 Jun 2022 19:11

Instrument :
 MSVOA_V
 ClientSampleId :
 EW4T0

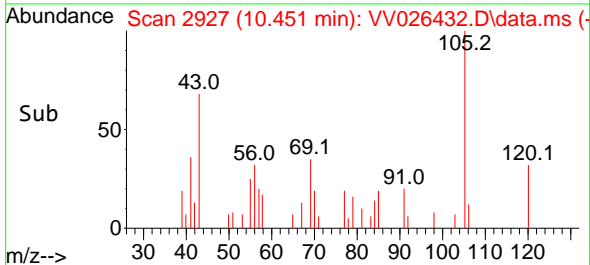
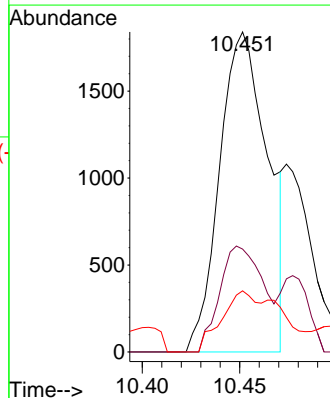
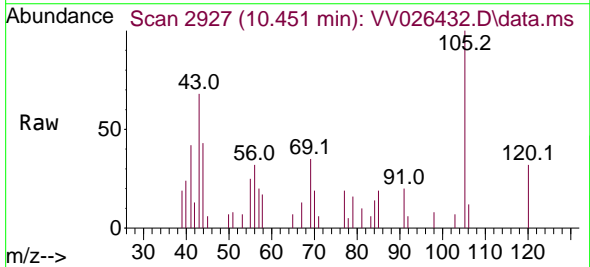


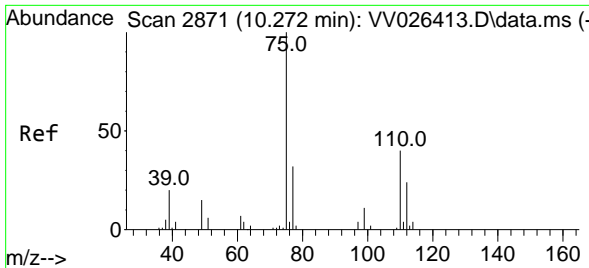
Tgt Ion: 83 Resp: 4640
 Ion Ratio Lower Upper
 83 100
 85 363.6 47.1 87.5#
 131 0.0 7.7 11.5#



#60
 Isopropylbenzene
 Concen: 0.059 ug/L
 RT: 10.451 min Scan# 2927
 Delta R.T. 0.521 min
 Lab File: VV026432.D
 Acq: 18 Jun 2022 19:11

Tgt Ion: 105 Resp: 3149
 Ion Ratio Lower Upper
 105 100
 120 30.0 21.5 32.3
 77 14.8 12.2 18.4

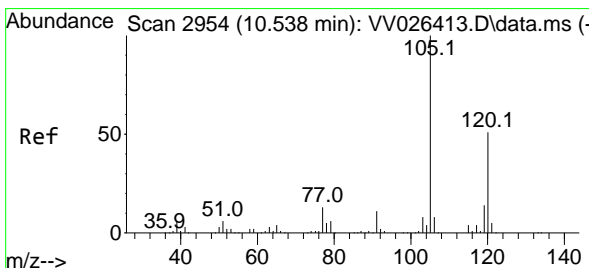
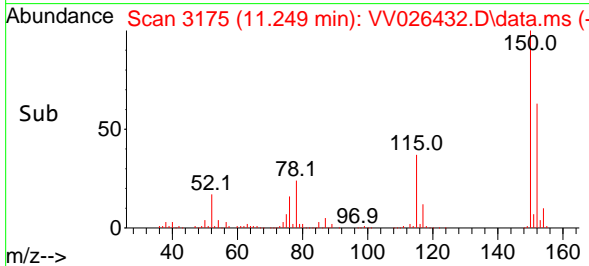
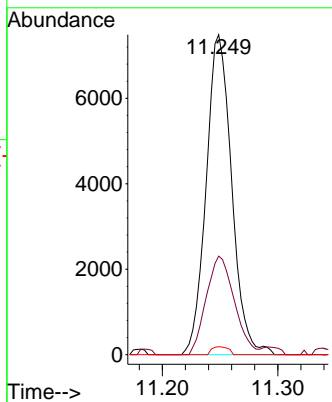
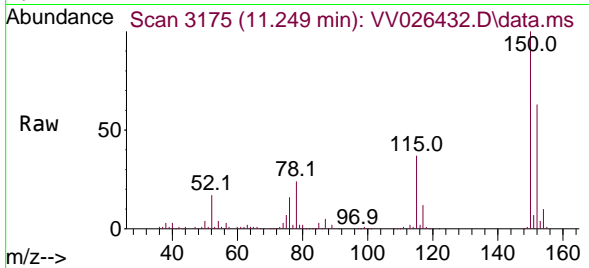




#61
 1,2,3-Trichloropropane
 Concen: 1.770 ug/L
 RT: 11.249 min Scan# 31
 Delta R.T. 0.977 min
 Lab File: VV026432.D
 Acq: 18 Jun 2022 19:11

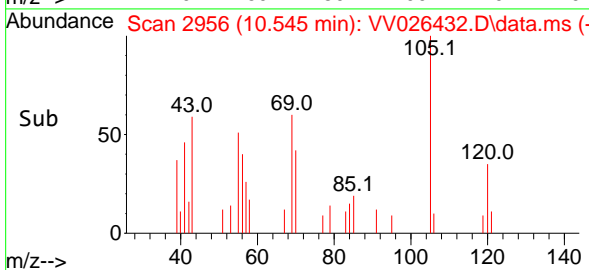
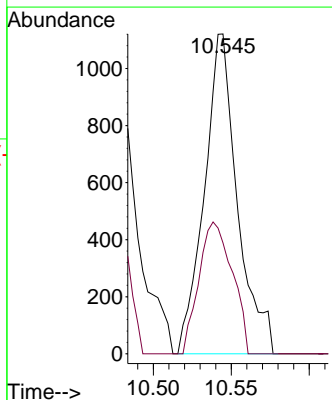
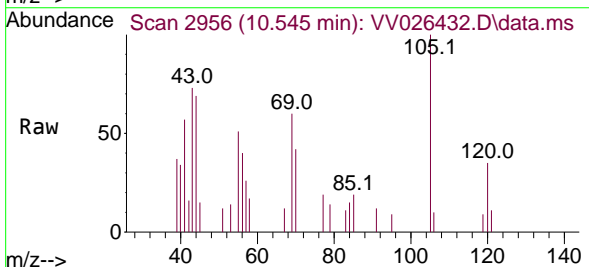
Instrument :
 MSVOA_V
 ClientSampleId :
 EW4T0

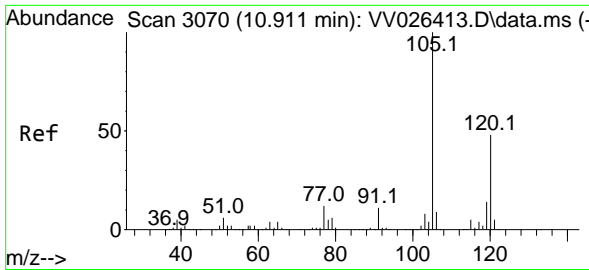
Tgt Ion	Resp	Lower	Upper
75	11498		
75	100		
77	34.0	26.9	40.3
110	1.6	30.7	46.1#



#62
 1,3,5-Trimethylbenzene
 Concen: 0.039 ug/L
 RT: 10.545 min Scan# 2956
 Delta R.T. 0.006 min
 Lab File: VV026432.D
 Acq: 18 Jun 2022 19:11

Tgt Ion	Resp	Lower	Upper
105	1654		
105	100		
120	41.5	39.9	59.9

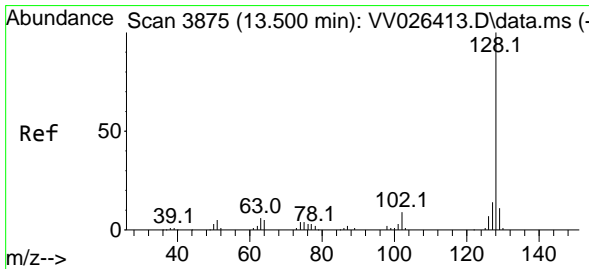
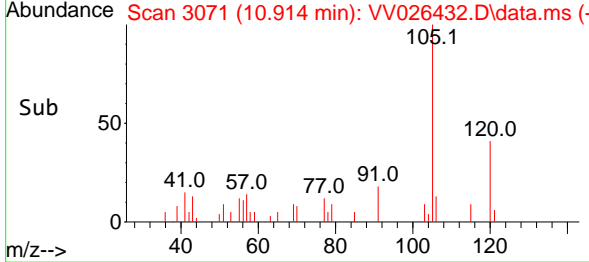
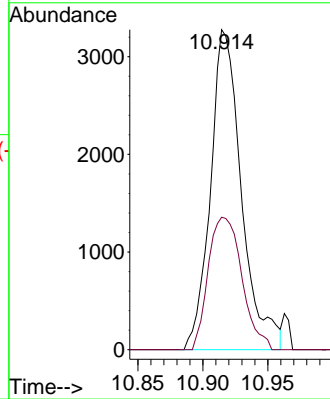
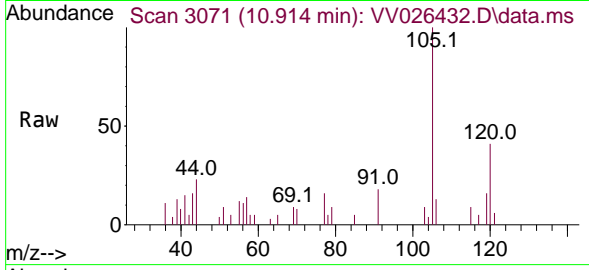




#63
 1,2,4-Trimethylbenzene
 Concen: 0.130 ug/L
 RT: 10.914 min Scan# 3070
 Delta R.T. 0.003 min
 Lab File: VV026432.D
 Acq: 18 Jun 2022 19:11

Instrument : MSVOA_V
 ClientSampleId : EW4T0

Tgt Ion:105 Resp: 5430
 Ion Ratio Lower Upper
 105 100
 120 45.0 36.9 55.3



#71
 Naphthalene
 Concen: 0.550 ug/L
 RT: 13.503 min Scan# 3876
 Delta R.T. 0.003 min
 Lab File: VV026432.D
 Acq: 18 Jun 2022 19:11

Tgt Ion:128 Resp: 10678
 Ion Ratio Lower Upper
 128 100
 129 11.5 8.7 13.1
 127 16.6 10.6 16.0#

