

Data Path : Z:\voasrv\HPCHEM1\MSVOA\_V\Data\VV061822\  
 Data File : VV026415.D  
 Acq On : 18 Jun 2022 11:13  
 Operator : SY/MD  
 Sample : N3278-10DL 50000X  
 Misc : 25mL/MSVOA\_V/WATER  
 ALS Vial : 4 Sample Multiplier: 1

Instrument :  
 MSVOA\_V  
 ClientSampleId :  
 C0BF1DL

Integration Parameters: rteint.p

Integrator: RTE  
 Smoothing : ON Filtering: 5  
 Sampling : 1 Min Area: 3 % of largest Peak  
 Start Thrs: 0.1 Max Peaks: 100  
 Stop Thrs : 0 Peak Location: TOP

If leading or trailing edge < 100 prefer < Baseline drop else tangent >  
 Peak separation: 5

Method : Z:\voasrv\HPCHEM1\MSVOA\_V\Method\SFAMVTR061522WMA.M  
 Title : TRACE VOA SFAM1.0

Signal : TIC: VV026415.D\data.ms

peak #	R.T. min	first scan	max scan	last scan	PK TY	peak height	corr. area	corr. % max.	% of total
1	1.272	55	72	74	rBV3	11785	28451	4.30%	0.515%
2	1.323	82	88	108	rVB	117887	132046	19.95%	2.391%
3	1.587	155	170	180	rBV	103222	135376	20.46%	2.452%
4	2.124	327	337	357	rVB	207118	309634	46.79%	5.607%
5	2.526	451	462	474	rBV3	7715	13540	2.05%	0.245%
6	3.931	885	899	935	rBV2	35362	158602	23.97%	2.872%
7	4.365	1017	1034	1056	rBV	122253	300494	45.41%	5.442%
8	5.059	1232	1250	1284	rBV2	268896	661769	100.00%	11.984%
9	5.625	1412	1426	1452	rBV	207942	428842	64.80%	7.766%
10	5.921	1506	1518	1548	rBV2	238141	478170	72.26%	8.659%
11	6.075	1553	1566	1601	rVB	150773	313198	47.33%	5.672%
12	6.992	1840	1851	1873	rBV	49099	94243	14.24%	1.707%
13	7.320	1942	1953	1973	rBV	314414	548287	82.85%	9.929%
14	7.403	1973	1979	1992	rVB3	4713	9601	1.45%	0.174%
15	7.629	2040	2049	2066	rBV	26108	47946	7.25%	0.868%
16	7.982	2151	2159	2169	rVB4	7681	12711	1.92%	0.230%
17	8.095	2183	2194	2225	rBV2	175248	365910	55.29%	6.626%
18	8.419	2285	2295	2315	rBV3	11450	20949	3.17%	0.379%
19	8.854	2418	2430	2450	rBV	317792	514037	77.68%	9.309%
20	10.217	2840	2854	2866	rBV	89602	144111	21.78%	2.610%
21	11.249	3164	3175	3194	rBV	270803	416786	62.98%	7.548%
22	11.622	3280	3291	3313	rBV	246320	387308	58.53%	7.014%

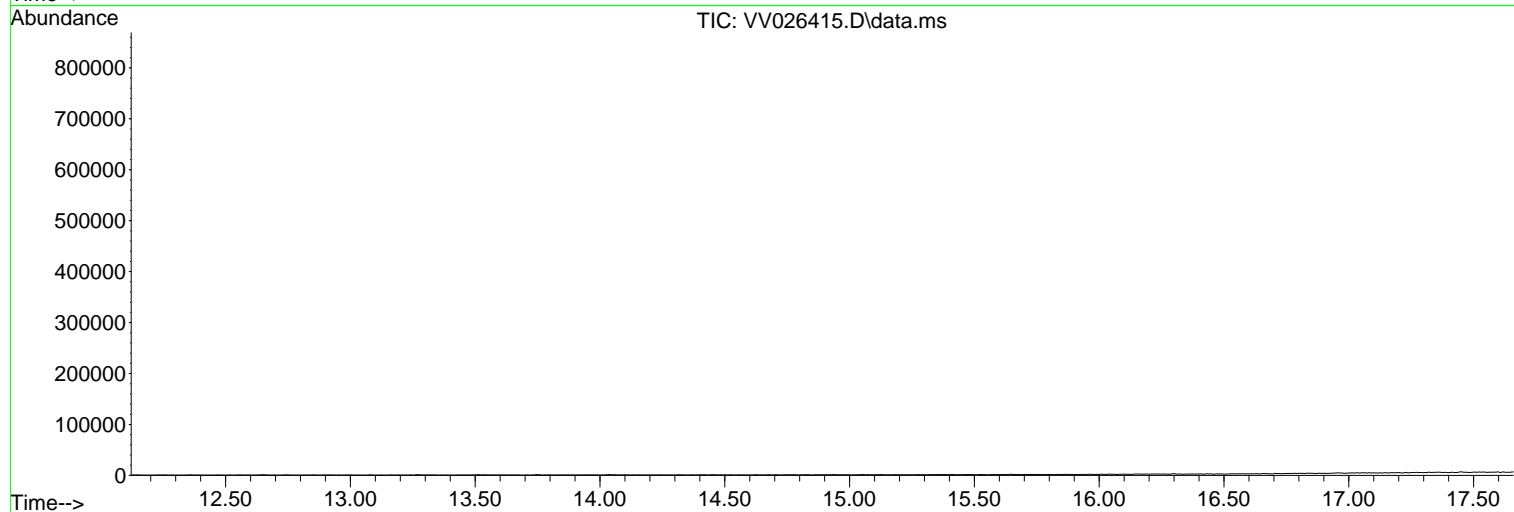
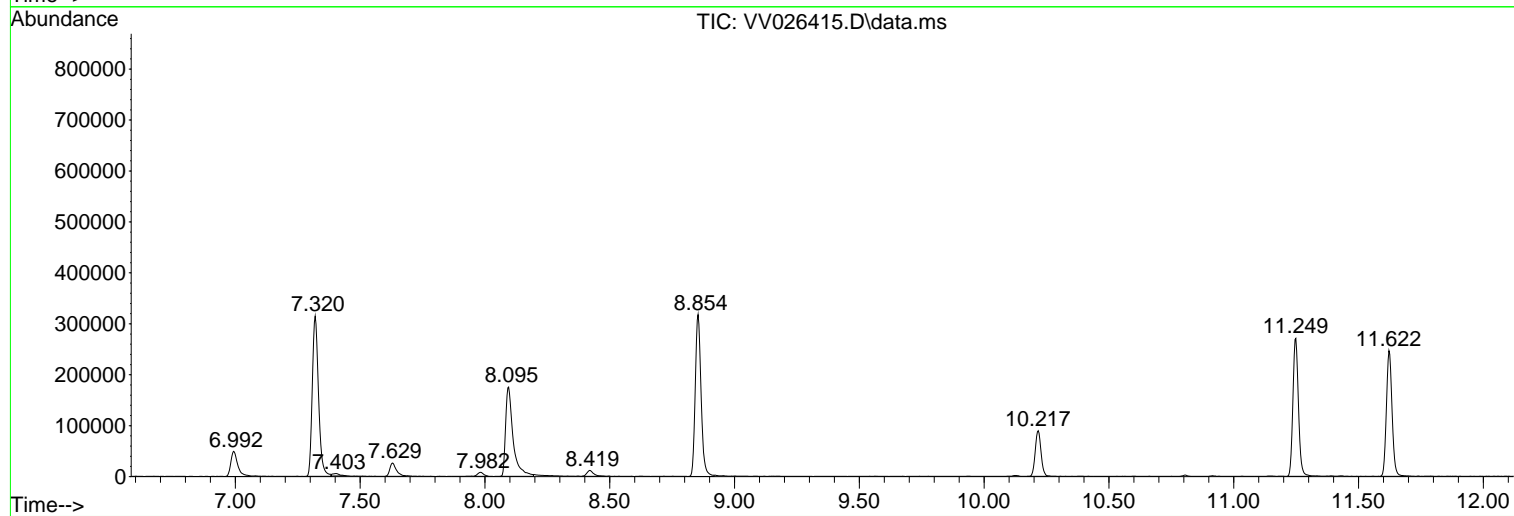
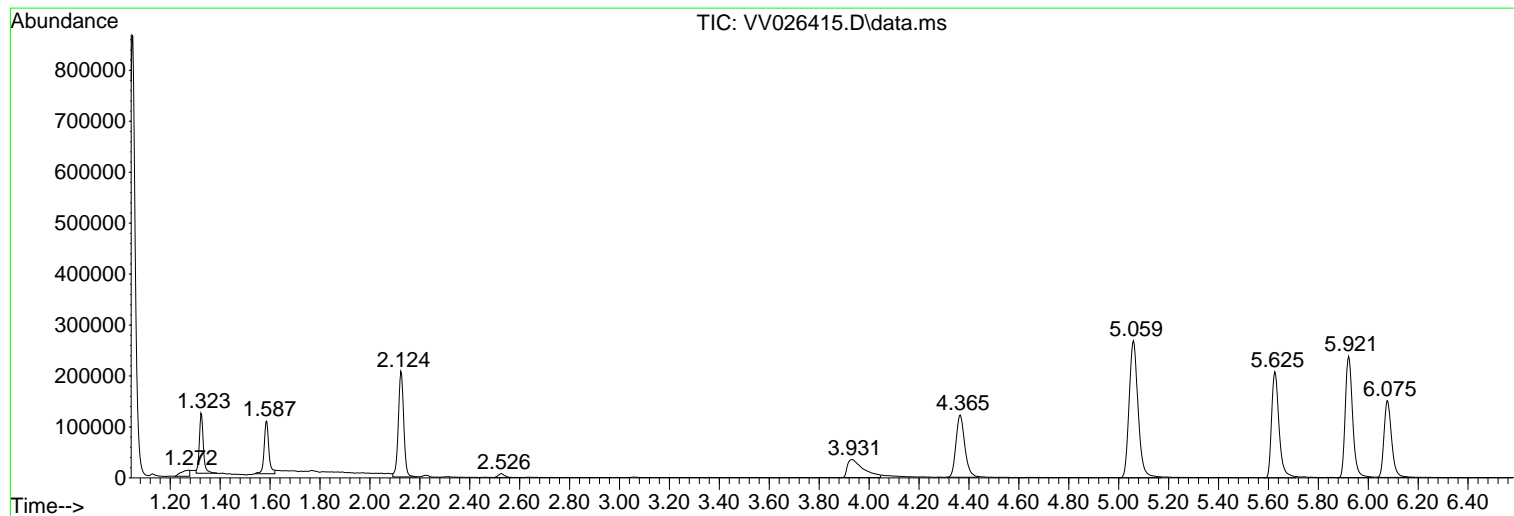
Sum of corrected areas: 5522011

Data Path : Z:\voasrv\HPCHEM1\MSVOA\_V\Data\VV061822\  
Data File : VV026415.D  
Acq On : 18 Jun 2022 11:13  
Operator : SY/MD  
Sample : N3278-10DL 50000X  
Misc : 25mL/MSVOA\_V/WATER  
ALS Vial : 4 Sample Multiplier: 1

Instrument :  
MSVOA\_V  
ClientSampleId :  
C0BF1DL

Quant Method : Z:\voasrv\HPCHEM1\MSVOA\_V\Method\SFAMVTR061522WMA.M  
Quant Title : TRACE VOA SFAM1.0

TIC Library : C:\Database\NIST20.L  
TIC Integration Parameters: LSCINT.P



Library Search Compound Report

Data Path : Z:\voasrv\HPCHEM1\MSVOA\_V\Data\VV061822\  
Data File : VV026415.D  
Acq On : 18 Jun 2022 11:13  
Operator : SY/MD  
Sample : N3278-10DL 50000X  
Misc : 25mL/MSVOA\_V/WATER  
ALS Vial : 4 Sample Multiplier: 1

Instrument :  
MSVOA\_V  
ClientSampleId :  
C0BF1DL

Quant Method : Z:\voasrv\HPCHEM1\MSVOA\_V\Method\SFAMVTR061522WMA.M  
Quant Title : TRACE VOA SFAM1.0

TIC Library : C:\Database\NIST20.L  
TIC Integration Parameters: LSCINT.P

No Library Search Compounds Detected

\*\*\*\*\*

Data Path : Z:\voasrv\HPCHEM1\MSVOA\_V\Data\VV061822\  
Data File : VV026415.D  
Acq On : 18 Jun 2022 11:13  
Operator : SY/MD  
Sample : N3278-10DL 50000X  
Misc : 25mL/MSVOA\_V/WATER  
ALS Vial : 4 Sample Multiplier: 1

Instrument :  
MSVOA\_V  
ClientSampleId :  
C0BF1DL

Quant Method : Z:\voasrv\HPCHEM1\MSVOA\_V\Method\SFAMVTR061522WMA.M  
Quant Title : TRACE VOA SFAM1.0

TIC Library : C:\Database\NIST0.L  
TIC Integration Parameters: LSCINT.P

TIC Top Hit name	RT	EstConc	Units	Response	--Internal Standard--			
					#	RT	Resp	Conc

---