

Data Path : Z:\voasrv\HPCHEM1\MSVOA_V\Data\VV061924\
 Data File : VV036145.D
 Acq On : 19 Jun 2024 18:14
 Operator : SY/MD
 Sample : P2873-19
 Misc : 2.66g/10.0mL/MSVOA_V/SOIL/B
 ALS Vial : 18 Sample Multiplier: 1

Instrument :
 MSVOA_V
 ClientSampleId :
 COSK8

Integration Parameters: LSCINT.P

Integrator: RTE
 Smoothing : OFF
 Sampling : 1
 Start Thrs : 0.2
 Stop Thrs : 0

Filtering: 5
 Min Area: 0 % of largest Peak
 Max Peaks: 100
 Peak Location: TOP

If leading or trailing edge < 100 prefer < Baseline drop else tangent >
 Peak separation: 5

Method : Z:\voasrv\HPCHEM1\MSVOA_V\Method\SFAMVLM053024SMA.M
 Title : VOC Analysis

Signal : TIC: VV036145.D\data.ms

peak #	R.T. min	first scan	max scan	last scan	PK TY	peak height	corr. area	corr. % max.	% of total
1	1.272	65	72	88	rVB	203598	226107	0.37%	0.235%
2	1.352	92	97	111	rVB	22511	32731	0.05%	0.034%
3	1.526	144	151	166	rVB	181484	214376	0.35%	0.222%
4	2.050	304	314	330	rBV	357960	515936	0.84%	0.535%
5	2.230	363	370	380	rVB	17018	25063	0.04%	0.026%
6	2.439	425	435	454	rVB	67364	115712	0.19%	0.120%
7	2.555	463	471	484	rVB	8474	16533	0.03%	0.017%
8	2.687	509	512	527	rVB	1628	3052	0.00%	0.003%
9	2.822	552	554	559	rVB4	647	502	0.00%	0.001%
10	2.851	559	563	567	rBV2	641	528	0.00%	0.001%
11	2.873	567	570	572	rBV2	565	404	0.00%	0.000%
12	2.892	572	576	584	rVV3	1045	1266	0.00%	0.001%
13	2.960	587	597	610	rVV4	13598	27165	0.04%	0.028%
14	3.153	654	657	662	rVB3	643	599	0.00%	0.001%
15	3.507	764	767	773	rBV2	365	384	0.00%	0.000%
16	3.664	810	816	817	rBV3	735	619	0.00%	0.001%
17	3.834	852	869	901	rBV3	35617	157676	0.26%	0.164%
18	4.243	980	996	1024	rVV	235191	616729	1.01%	0.640%
19	4.436	1053	1056	1059	rBV4	566	362	0.00%	0.000%
20	4.568	1090	1097	1102	rBV5	1538	2060	0.00%	0.002%
21	4.722	1140	1145	1148	rBV6	473	512	0.00%	0.001%
22	4.789	1162	1166	1172	rVB2	668	616	0.00%	0.001%
23	4.870	1186	1191	1194	rVB4	540	459	0.00%	0.000%
24	4.950	1200	1216	1260	rBV2	541049	1412555	2.31%	1.465%
25	5.182	1285	1288	1290	rBV3	731	501	0.00%	0.001%
26	5.349	1336	1340	1343	rBV3	523	443	0.00%	0.000%
27	5.461	1372	1375	1378	rBV3	617	420	0.00%	0.000%
28	5.529	1385	1396	1443	rBV	595549	1254212	2.05%	1.301%
29	5.831	1475	1490	1521	rBV2	103031	243947	0.40%	0.253%
30	5.986	1525	1538	1571	rBV	323475	681304	1.11%	0.707%
31	6.445	1675	1681	1682	rBV6	470	365	0.00%	0.000%
32	6.487	1691	1694	1695	rBV2	771	362	0.00%	0.000%
33	6.603	1726	1730	1734	rBV3	567	428	0.00%	0.000%
34	6.857	1803	1809	1813	rBV2	303	357	0.00%	0.000%
35	6.912	1816	1826	1860	rBV	129725	261979	0.43%	0.272%
36	7.201	1908	1916	1917	rBV4	913	939	0.00%	0.001%

Data Path : Z:\voasrv\HPCHEM1\MSVOA_V\Data\VW061924\
 Data File : VW036145.D
 Acq On : 19 Jun 2024 18:14
 Operator : SY/MD
 Sample : P2873-19
 Misc : 2.66g/10.0mL/MSVOA_V/SOIL/B
 ALS Vial : 18 Sample Multiplier: 1

Instrument :
 MSVOA_V
 ClientSampleId :
 COSK8

Integration Parameters: LSCINT.P

Integrator: RTE
 Smoothing : OFF Filtering: 5
 Sampling : 1 Min Area: 0 % of largest Peak
 Start Thrs: 0.2 Max Peaks: 100
 Stop Thrs : 0 Peak Location: TOP

If leading or trailing edge < 100 prefer < Baseline drop else tangent >
 Peak separation: 5

Method : Z:\voasrv\HPCHEM1\MSVOA_V\Method\SFAMVLM053024SMA.M
 Title : VOC Analysis

37	7.243	1917	1929	1946	rBV	534052	952313	1.56%	0.988%
38	7.323	1947	1954	1972	rVB	36318	74856	0.12%	0.078%
39	7.555	2016	2026	2058	rBV	87432	173100	0.28%	0.180%
40	7.773	2090	2094	2098	rBV3	792	649	0.00%	0.001%
41	7.908	2114	2136	2167	rBV	36072170	61140489	100.00%	63.420%
42	8.030	2168	2174	2212	rVB	129970	302521	0.49%	0.314%
43	8.358	2269	2276	2284	rBV2	5484	9063	0.01%	0.009%
44	8.571	2339	2342	2347	rVB5	1121	1069	0.00%	0.001%
45	8.654	2366	2368	2371	rVB3	822	409	0.00%	0.000%
46	8.680	2371	2376	2378	rBV3	825	769	0.00%	0.001%
47	8.693	2378	2380	2386	rVV5	1169	926	0.00%	0.001%
48	8.783	2396	2408	2449	rBV	829072	1362742	2.23%	1.414%
49	8.956	2454	2462	2482	rVB2	15551	29117	0.05%	0.030%
50	9.075	2487	2499	2520	rBV	139927	245315	0.40%	0.254%
51	9.210	2539	2541	2548	rVB4	704	555	0.00%	0.001%
52	9.477	2608	2624	2662	rBV	1458510	2241381	3.67%	2.325%
53	9.776	2711	2717	2718	rBV4	860	704	0.00%	0.001%
54	9.866	2735	2745	2764	rBV	66528	107621	0.18%	0.112%
55	9.969	2775	2777	2784	rVB3	922	968	0.00%	0.001%
56	10.001	2784	2787	2789	rBV3	562	430	0.00%	0.000%
57	10.153	2823	2834	2857	rVV	216733	347192	0.57%	0.360%
58	10.291	2868	2877	2884	rBV	34358	55567	0.09%	0.058%
59	10.410	2898	2914	2926	rBV	59473	133475	0.22%	0.138%
60	10.477	2928	2935	2946	rVB	22907	36117	0.06%	0.037%
61	10.612	2972	2977	2981	rBV5	514	633	0.00%	0.001%
62	10.673	2985	2996	3022	rVV	94901	154304	0.25%	0.160%
63	10.796	3028	3034	3037	rBV7	922	1090	0.00%	0.001%
64	10.854	3040	3052	3069	rVV	69142	110300	0.18%	0.114%
65	10.934	3070	3077	3088	rVV4	5009	8363	0.01%	0.009%
66	11.027	3102	3106	3116	rVB9	3539	5013	0.01%	0.005%
67	11.120	3127	3135	3136	rBV3	7758	6962	0.01%	0.007%
68	11.185	3144	3155	3172	rBV	516564	828501	1.36%	0.859%
69	11.271	3172	3182	3194	rVV	155584	238671	0.39%	0.248%
70	11.336	3195	3202	3214	rVV	54427	81865	0.13%	0.085%
71	11.464	3231	3242	3261	rBV2	92766	212966	0.35%	0.221%
72	11.558	3262	3271	3293	rVB	321550	521921	0.85%	0.541%
73	11.680	3299	3309	3328	rBV	245270	390786	0.64%	0.405%
74	11.850	3355	3362	3380	rVB4	10714	23022	0.04%	0.024%
75	11.956	3387	3395	3402	rBV3	10215	15344	0.03%	0.016%
76	12.050	3416	3424	3443	rVB4	10221	20542	0.03%	0.021%

LSC Area Percent Report

Data Path : Z:\voasrv\HPCHEM1\MSVOA_V\Data\VW061924\
 Data File : VW036145.D
 Acq On : 19 Jun 2024 18:14
 Operator : SY/MD
 Sample : P2873-19
 Misc : 2.66g/10.0mL/MSVOA_V/SOIL/B
 ALS Vial : 18 Sample Multiplier: 1

Instrument :
 MSVOA_V
 ClientSampleId :
 C0SK8

Integration Parameters: LSCINT.P
 Integrator: RTE
 Smoothing : OFF Filtering: 5
 Sampling : 1 Min Area: 0 % of largest Peak
 Start Thrs: 0.2 Max Peaks: 100
 Stop Thrs : 0 Peak Location: TOP

If leading or trailing edge < 100 prefer < Baseline drop else tangent >
 Peak separation: 5

Method : Z:\voasrv\HPCHEM1\MSVOA_V\Method\SFAMVLM053024SMA.M
 Title : VOC Analysis

77	12.191	3459	3468	3480	rBV2	12815	21085	0.03%	0.022%
78	12.252	3480	3487	3496	rBV2	6039	9105	0.01%	0.009%
79	12.307	3496	3504	3511	rVV10	3941	6739	0.01%	0.007%
80	12.352	3511	3518	3527	rVV3	9209	13420	0.02%	0.014%
81	12.406	3527	3535	3554	rVB4	12815	23927	0.04%	0.025%
82	12.574	3585	3587	3589	rBV2	755	421	0.00%	0.000%
83	12.664	3606	3615	3626	rBV4	6668	10984	0.02%	0.011%
84	12.818	3653	3663	3674	rBV3	52907	84647	0.14%	0.088%
85	12.889	3676	3685	3696	rVV3	10551	17495	0.03%	0.018%
86	12.988	3705	3716	3733	rVV3	26307	49944	0.08%	0.052%
87	13.053	3734	3736	3740	rVV3	777	584	0.00%	0.001%
88	13.082	3744	3745	3748	rVB2	802	359	0.00%	0.000%
89	13.204	3778	3783	3787	rBV5	1927	2235	0.00%	0.002%
90	13.435	3841	3855	3883	rBV	13486699	20082396	32.85%	20.831%
91	13.558	3884	3893	3922	rVV	131830	244604	0.40%	0.254%
92	13.683	3925	3932	3948	rVB	22653	36717	0.06%	0.038%
93	14.213	4095	4097	4100	rBV4	685	400	0.00%	0.000%
94	14.233	4101	4103	4107	rVB4	736	409	0.00%	0.000%
95	14.355	4138	4141	4144	rBV3	760	545	0.00%	0.001%
96	14.406	4154	4157	4160	rBV2	768	550	0.00%	0.001%
97	14.519	4182	4192	4199	rBV2	7997	13230	0.02%	0.014%
98	14.570	4200	4208	4226	rVB2	28068	49782	0.08%	0.052%
99	14.686	4241	4244	4245	rBV2	1604	861	0.00%	0.001%
100	14.754	4255	4265	4286	rVB3	42067	81008	0.13%	0.084%

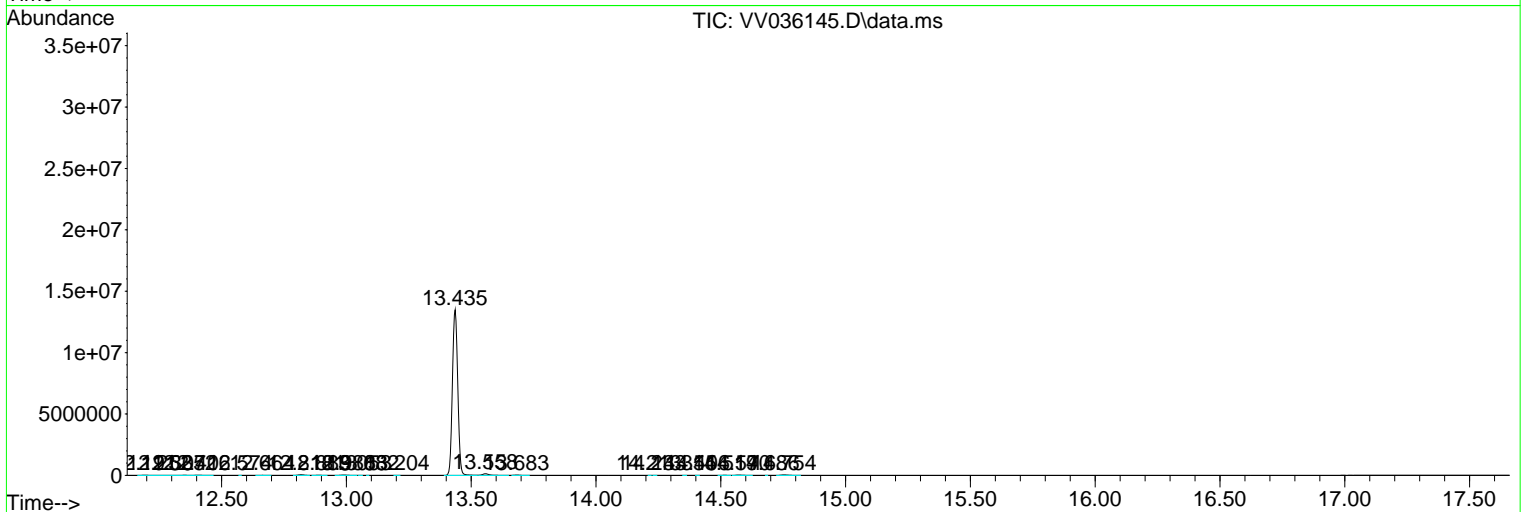
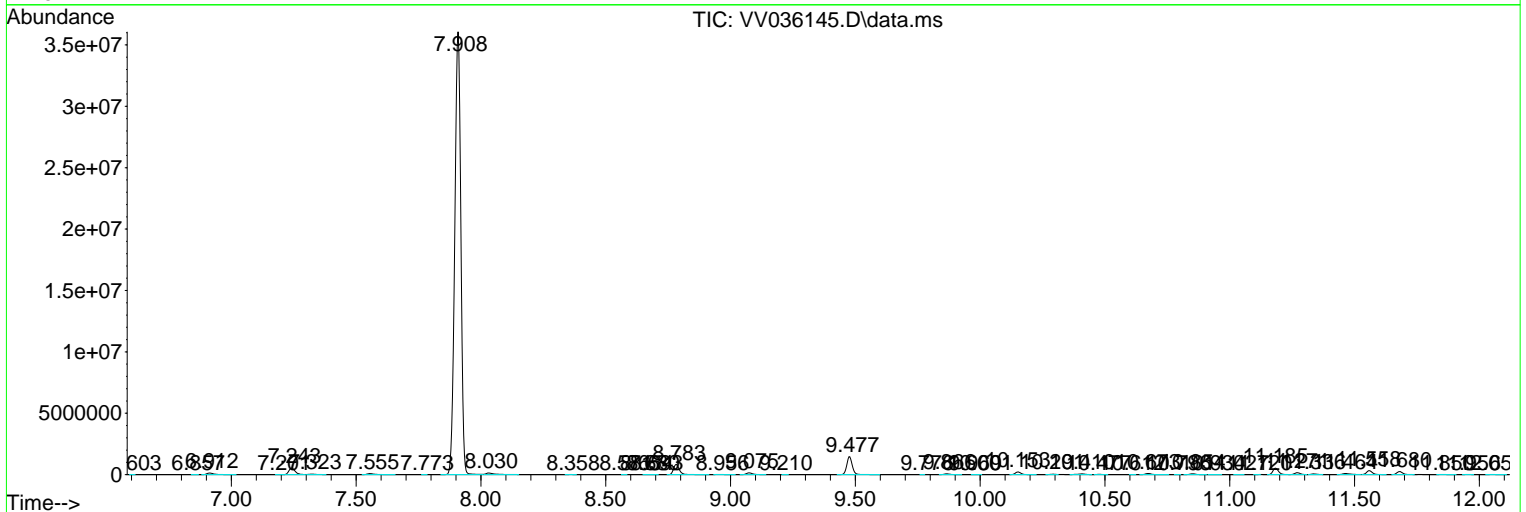
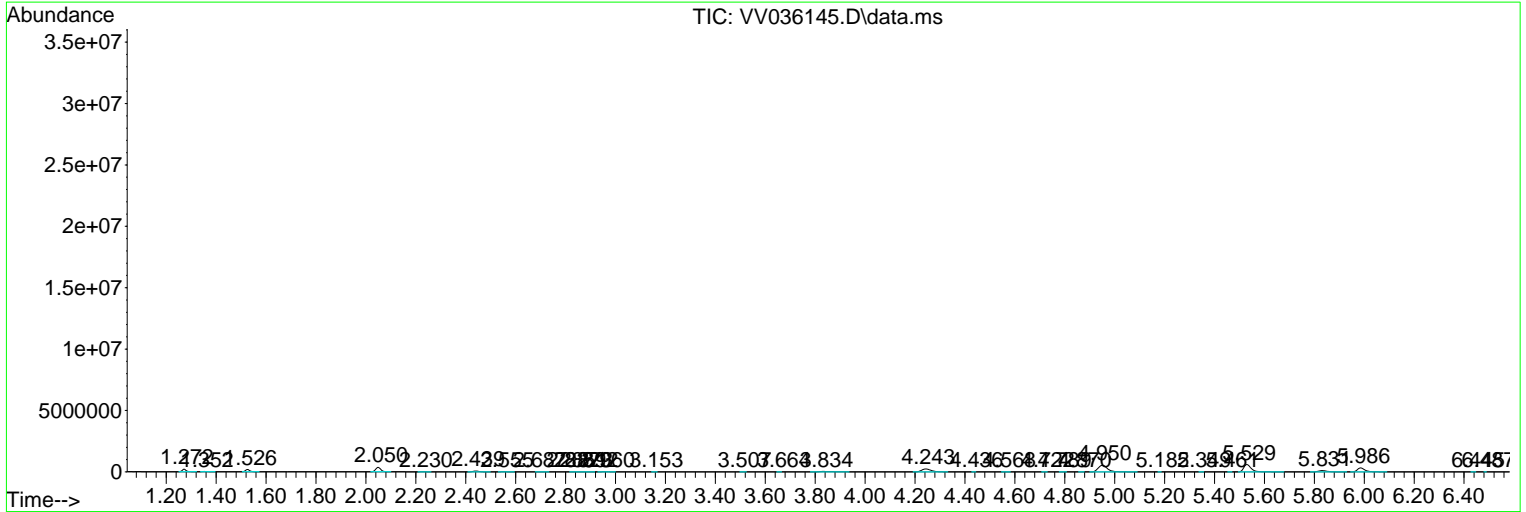
Sum of corrected areas: 96406281

Data Path : Z:\voasrv\HPCHEM1\MSVOA_V\Data\VV061924\
 Data File : VV036145.D
 Acq On : 19 Jun 2024 18:14
 Operator : SY/MD
 Sample : P2873-19
 Misc : 2.66g/10.0mL/MSVOA_V/SOIL/B
 ALS Vial : 18 Sample Multiplier: 1

Instrument :
 MSVOA_V
 ClientSampleId :
 COSK8

Quant Method : Z:\voasrv\HPCHEM1\MSVOA_V\Method\SFAMVLM053024SMA.M
 Quant Title : VOC Analysis

TIC Library : C:\Database\NIST20.L
 TIC Integration Parameters: LSCINT.P



Data Path : Z:\voasrv\HPCHEM1\MSVOA_V\Data\VV061924\
 Data File : VV036145.D
 Acq On : 19 Jun 2024 18:14
 Operator : SY/MD
 Sample : P2873-19
 Misc : 2.66g/10.0mL/MSVOA_V/SOIL/B
 ALS Vial : 18 Sample Multiplier: 1

Instrument :
 MSVOA_V
 ClientSampleId :
 C0SK8

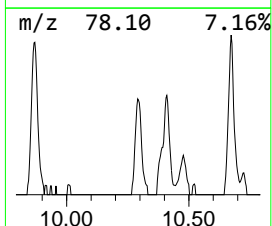
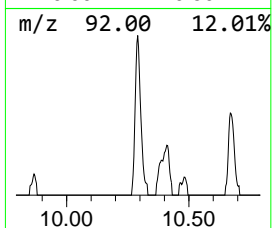
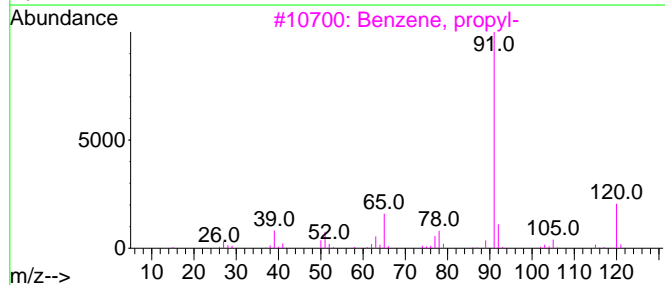
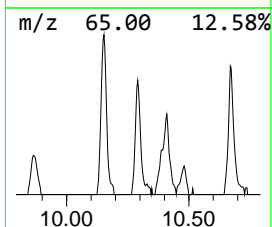
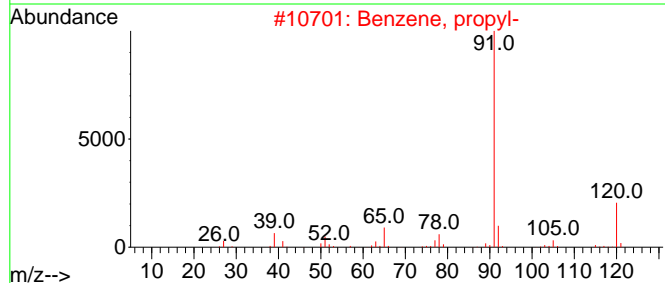
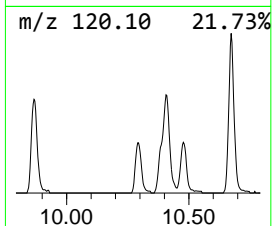
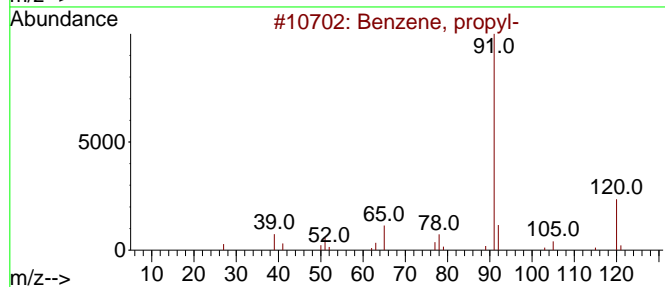
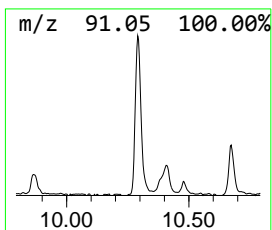
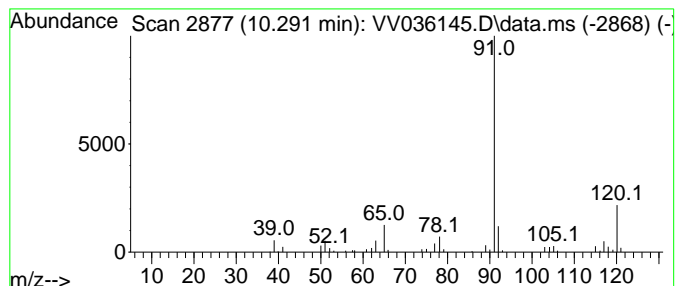
Quant Method : Z:\voasrv\HPCHEM1\MSVOA_V\Method\SFAMVLM053024SMA.M
 Quant Title : VOC Analysis

TIC Library : C:\Database\NIST20.L
 TIC Integration Parameters: LSCINT.P

 Peak Number 2 Benzene, propyl- Concentration Rank 12

R.T.	EstConc	Area	Relative to ISTD	R.T.
10.291	1.68 ug/L	55567	1,4-Dichlorobenzene-d4	11.185

Hit#	of	5	Tentative ID	MW	MolForm	CAS#	Qual
1			Benzene, propyl-	120	C9H12	000103-65-1	81
2			Benzene, propyl-	120	C9H12	000103-65-1	81
3			Benzene, propyl-	120	C9H12	000103-65-1	74
4			1,2-Ethanediamine, N,N'-bis(phen...	240	C16H20N2	000140-28-3	72
5			1-(Benzylamino)propan-2-ol	165	C10H15NO	1000486-84-7	72



Data Path : Z:\voasrv\HPCHEM1\MSVOA_V\Data\VV061924\
 Data File : VV036145.D
 Acq On : 19 Jun 2024 18:14
 Operator : SY/MD
 Sample : P2873-19
 Misc : 2.66g/10.0mL/MSVOA_V/SOIL/B
 ALS Vial : 18 Sample Multiplier: 1

Instrument :
 MSVOA_V
 ClientSampleId :
 C0SK8

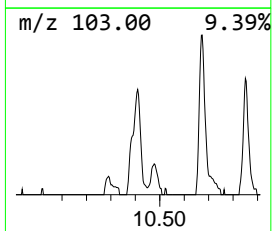
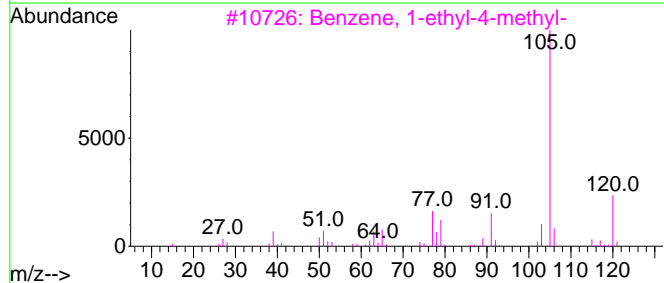
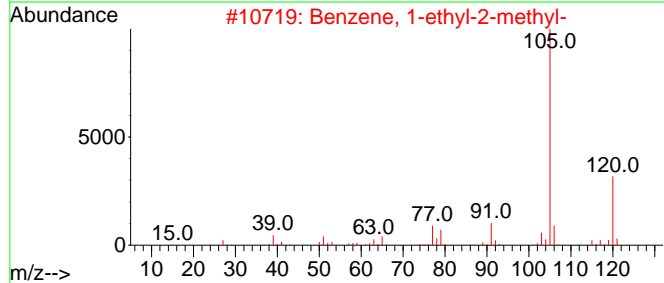
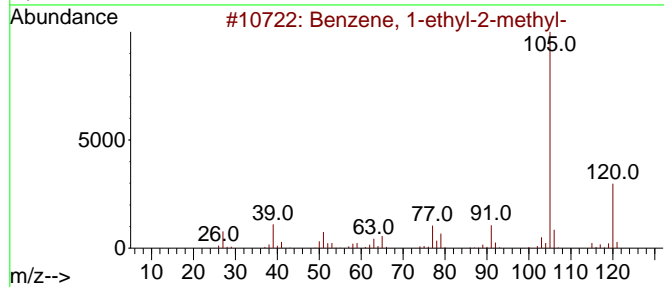
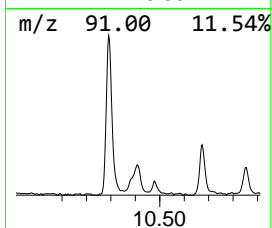
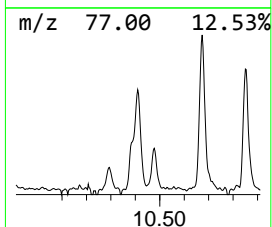
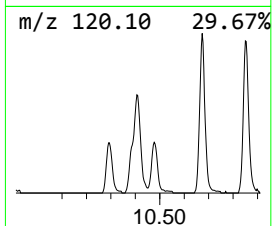
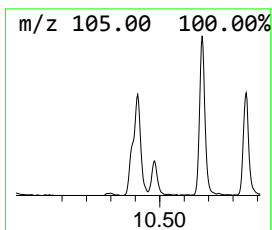
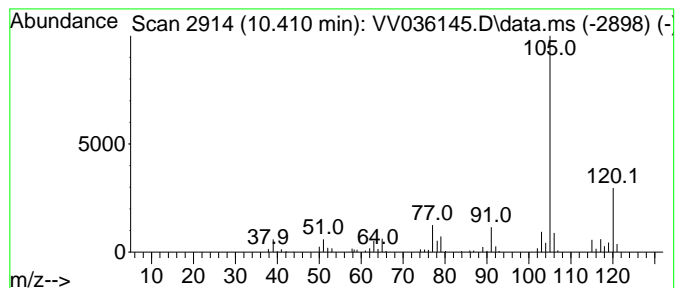
Quant Method : Z:\voasrv\HPCHEM1\MSVOA_V\Method\SFAMVLM053024SMA.M
 Quant Title : VOC Analysis

TIC Library : C:\Database\NIST20.L
 TIC Integration Parameters: LSCINT.P

 Peak Number 3 Benzene, 1-ethyl-2-methyl- Concentration Rank 8

R.T.	EstConc	Area	Relative to ISTD	R.T.
10.410	4.03 ug/L	133475	1,4-Dichlorobenzene-d4	11.185

Hit#	of	5	Tentative ID	MW	MolForm	CAS#	Qual
1			Benzene, 1-ethyl-2-methyl-	120	C9H12	000611-14-3	94
2			Benzene, 1-ethyl-2-methyl-	120	C9H12	000611-14-3	94
3			Benzene, 1-ethyl-4-methyl-	120	C9H12	000622-96-8	94
4			Benzene, 1-ethyl-3-methyl-	120	C9H12	000620-14-4	94
5			Benzene, 1-ethyl-3-methyl-	120	C9H12	000620-14-4	91



Data Path : Z:\voasrv\HPCHEM1\MSVOA_V\Data\VV061924\
 Data File : VV036145.D
 Acq On : 19 Jun 2024 18:14
 Operator : SY/MD
 Sample : P2873-19
 Misc : 2.66g/10.0mL/MSVOA_V/SOIL/B
 ALS Vial : 18 Sample Multiplier: 1

Instrument :
 MSVOA_V
 ClientSampleId :
 C0SK8

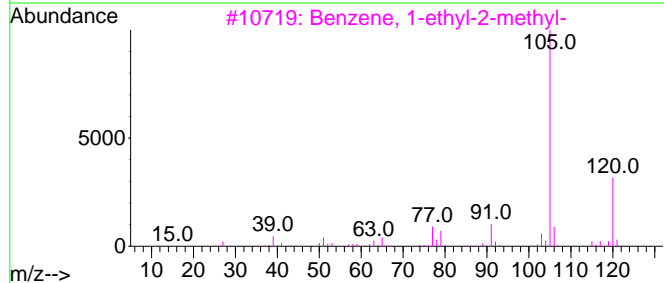
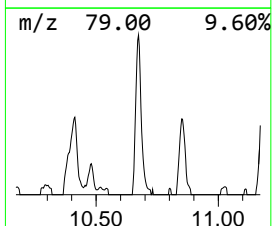
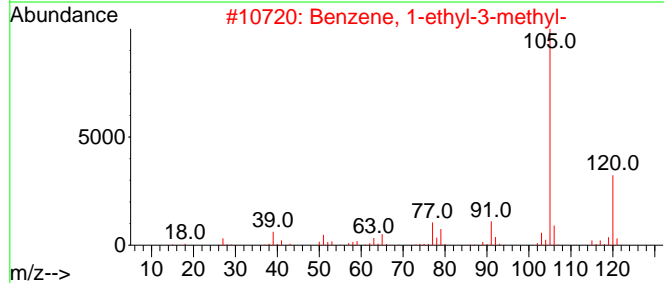
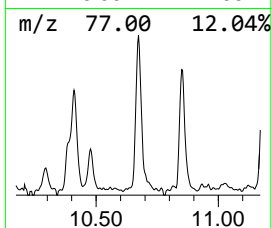
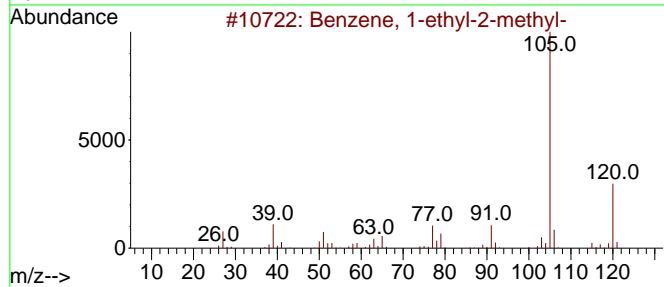
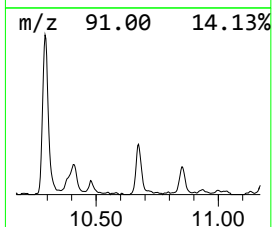
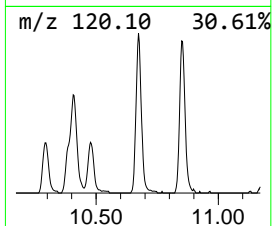
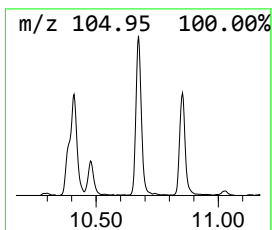
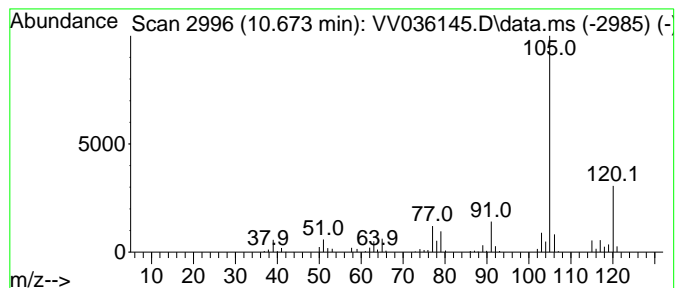
Quant Method : Z:\voasrv\HPCHEM1\MSVOA_V\Method\SFAMVLM053024SMA.M
 Quant Title : VOC Analysis

TIC Library : C:\Database\NIST20.L
 TIC Integration Parameters: LSCINT.P

 Peak Number 4 Benzene, 1-ethyl-3-methyl- Concentration Rank 7

R.T.	EstConc	Area	Relative to ISTD	R.T.
10.673	4.66 ug/L	154304	1,4-Dichlorobenzene-d4	11.185

Hit#	of	5	Tentative ID	MW	MolForm	CAS#	Qual
1			Benzene, 1-ethyl-2-methyl-	120	C9H12	000611-14-3	94
2			Benzene, 1-ethyl-3-methyl-	120	C9H12	000620-14-4	91
3			Benzene, 1-ethyl-2-methyl-	120	C9H12	000611-14-3	91
4			Benzene, 1-ethyl-3-methyl-	120	C9H12	000620-14-4	91
5			Benzene, 1-ethyl-4-methyl-	120	C9H12	000622-96-8	91



Data Path : Z:\voasrv\HPCHEM1\MSVOA_V\Data\VV061924\
 Data File : VV036145.D
 Acq On : 19 Jun 2024 18:14
 Operator : SY/MD
 Sample : P2873-19
 Misc : 2.66g/10.0mL/MSVOA_V/SOIL/B
 ALS Vial : 18 Sample Multiplier: 1

Instrument :
 MSVOA_V
 ClientSampleId :
 C0SK8

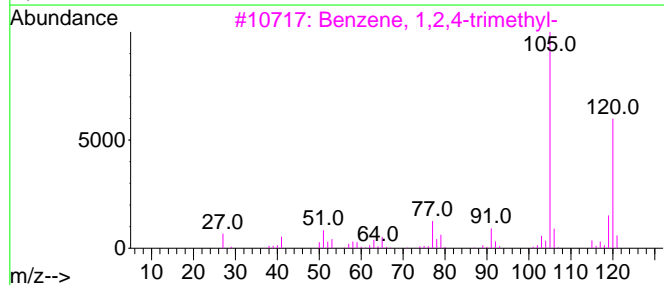
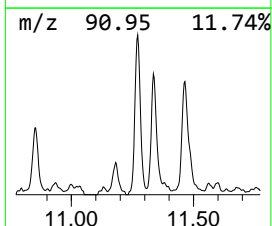
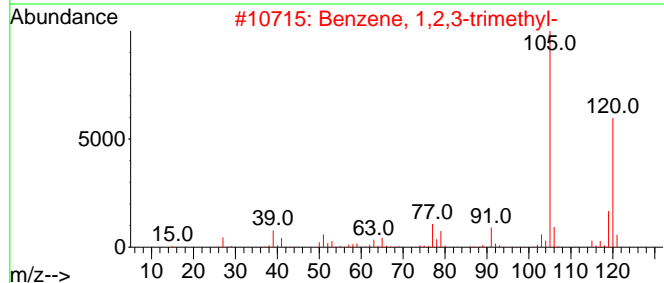
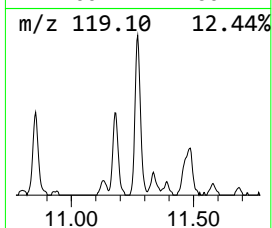
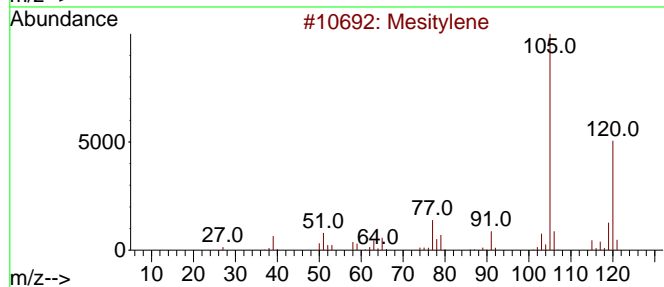
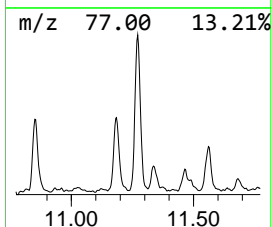
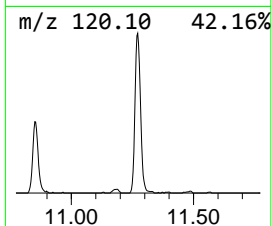
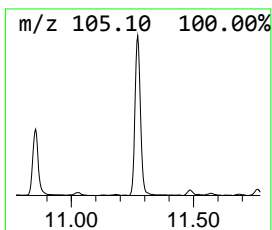
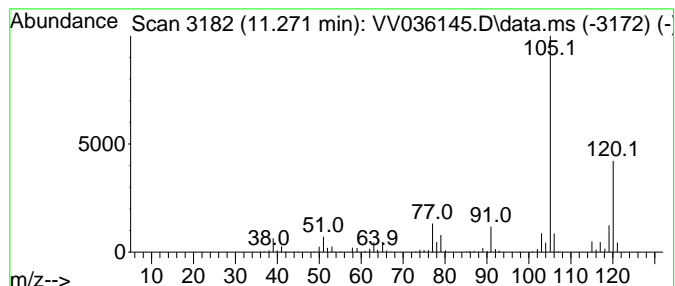
Quant Method : Z:\voasrv\HPCHEM1\MSVOA_V\Method\SFAMVLM053024SMA.M
 Quant Title : VOC Analysis

TIC Library : C:\Database\NIST20.L
 TIC Integration Parameters: LSCINT.P

 Peak Number 5 Benzene, 1-ethyl-4-methyl- Concentration Rank 4

R.T.	EstConc	Area	Relative to ISTD	R.T.
11.272	7.20 ug/L	238671	1,4-Dichlorobenzene-d4	11.185

Hit#	of	5	Tentative ID	MW	MolForm	CAS#	Qual
1			Mesitylene	120	C9H12	000108-67-8	97
2			Benzene, 1,2,3-trimethyl-	120	C9H12	000526-73-8	95
3			Benzene, 1,2,4-trimethyl-	120	C9H12	000095-63-6	95
4			Benzene, 1-ethyl-4-methyl-	120	C9H12	000622-96-8	91
5			Mesitylene	120	C9H12	000108-67-8	91



Data Path : Z:\voasrv\HPCHEM1\MSVOA_V\Data\VV061924\
 Data File : VV036145.D
 Acq On : 19 Jun 2024 18:14
 Operator : SY/MD
 Sample : P2873-19
 Misc : 2.66g/10.0mL/MSVOA_V/SOIL/B
 ALS Vial : 18 Sample Multiplier: 1

Instrument :
 MSVOA_V
 ClientSampleId :
 C0SK8

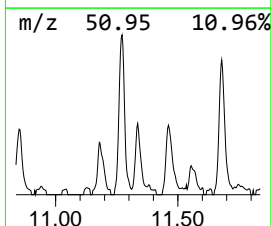
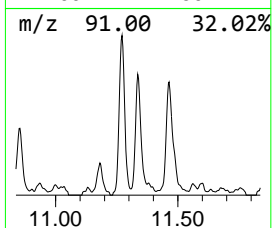
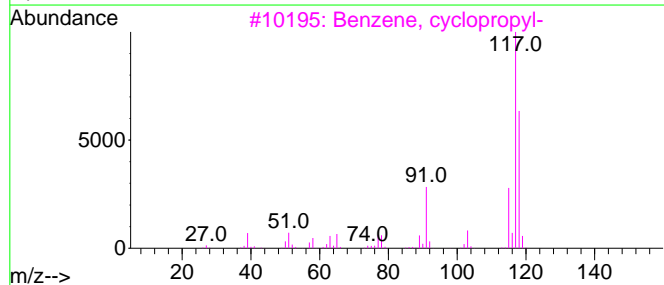
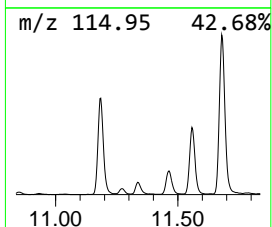
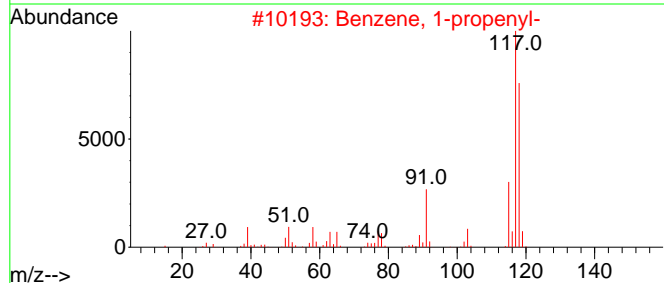
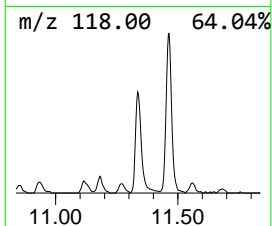
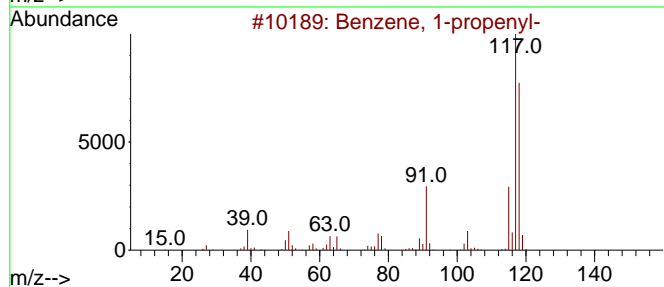
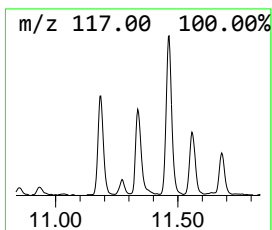
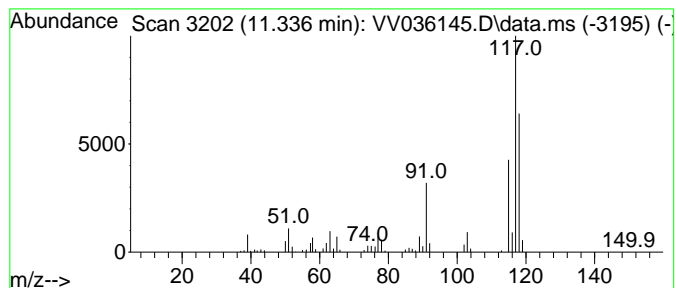
Quant Method : Z:\voasrv\HPCHEM1\MSVOA_V\Method\SFAMVLM053024SMA.M
 Quant Title : VOC Analysis

TIC Library : C:\Database\NIST20.L
 TIC Integration Parameters: LSCINT.P

 Peak Number 6 Benzene, 1-propenyl- Concentration Rank 10

R.T.	EstConc	Area	Relative to ISTD	R.T.
11.336	2.47 ug/L	81865	1,4-Dichlorobenzene-d4	11.185

Hit#	of	5	Tentative ID	MW	MolForm	CAS#	Qual
1			Benzene, 1-propenyl-	118	C9H10	000637-50-3	95
2			Benzene, 1-propenyl-	118	C9H10	000637-50-3	95
3			Benzene, cyclopropyl-	118	C9H10	000873-49-4	94
4			Benzene, 1-ethenyl-2-methyl-	118	C9H10	000611-15-4	94
5			(Z)-1-Phenylpropene	118	C9H10	000766-90-5	93



Data Path : Z:\voasrv\HPCHEM1\MSVOA_V\Data\VV061924\
 Data File : VV036145.D
 Acq On : 19 Jun 2024 18:14
 Operator : SY/MD
 Sample : P2873-19
 Misc : 2.66g/10.0mL/MSVOA_V/SOIL/B
 ALS Vial : 18 Sample Multiplier: 1

Instrument :
 MSVOA_V
 ClientSampleId :
 C0SK8

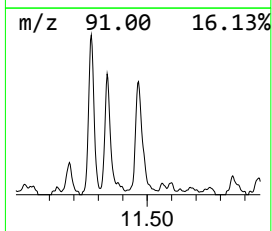
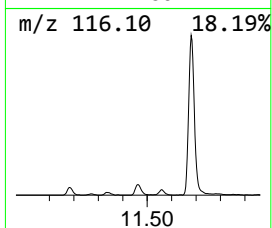
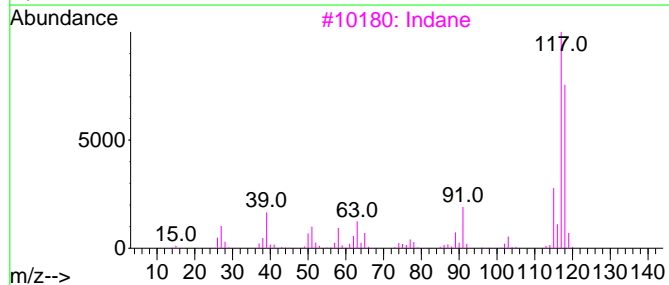
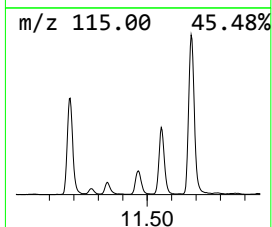
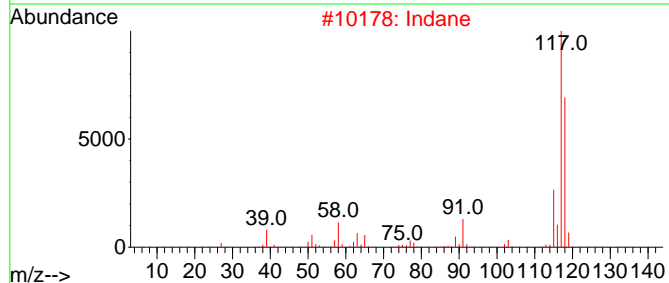
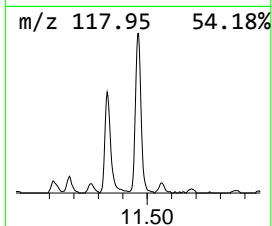
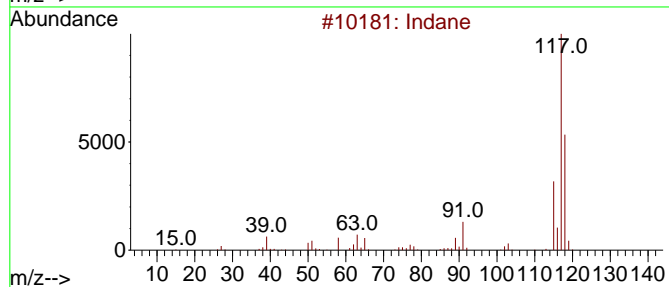
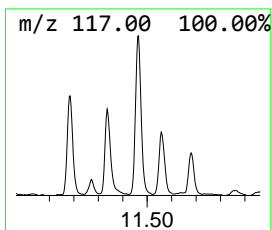
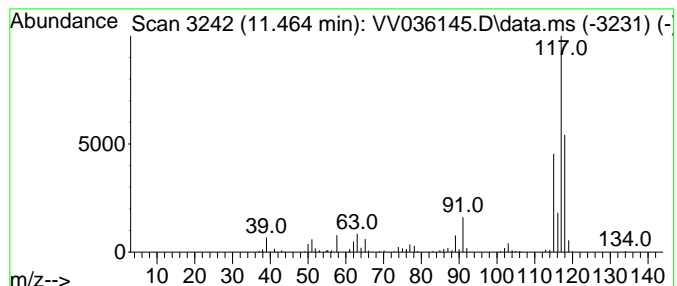
Quant Method : Z:\voasrv\HPCHEM1\MSVOA_V\Method\SFAMVLM053024SMA.M
 Quant Title : VOC Analysis

TIC Library : C:\Database\NIST20.L
 TIC Integration Parameters: LSCINT.P

 Peak Number 7 Indane Concentration Rank 5

R.T.	EstConc	Area	Relative to ISTD	R.T.
11.464	6.43 ug/L	212966	1,4-Dichlorobenzene-d4	11.185

Hit#	of	Tentative ID	MW	MolForm	CAS#	Qual
1	5	Indane	118	C9H10	000496-11-7	81
2		Indane	118	C9H10	000496-11-7	76
3		Indane	118	C9H10	000496-11-7	70
4		Benzene, cyclopropyl-	118	C9H10	000873-49-4	70
5		trans-Cinnamyl bromide	196	C9H9Br	026146-77-0	59



Data Path : Z:\voasrv\HPCHEM1\MSVOA_V\Data\VV061924\
 Data File : VV036145.D
 Acq On : 19 Jun 2024 18:14
 Operator : SY/MD
 Sample : P2873-19
 Misc : 2.66g/10.0mL/MSVOA_V/SOIL/B
 ALS Vial : 18 Sample Multiplier: 1

Instrument :
 MSVOA_V
 ClientSampleId :
 C0SK8

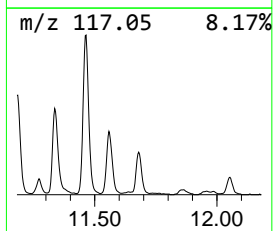
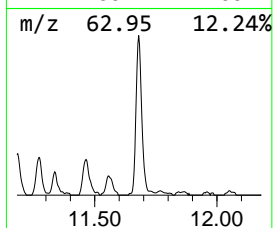
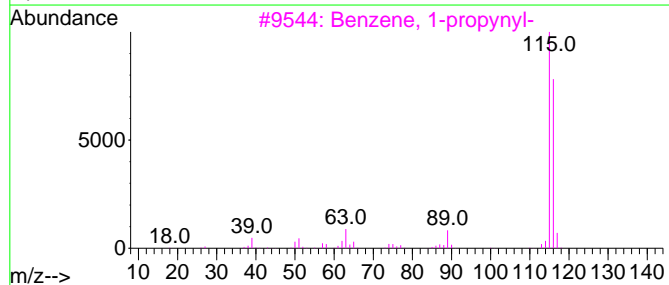
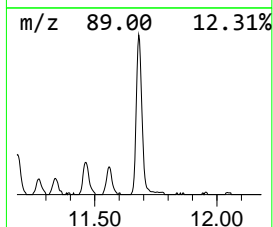
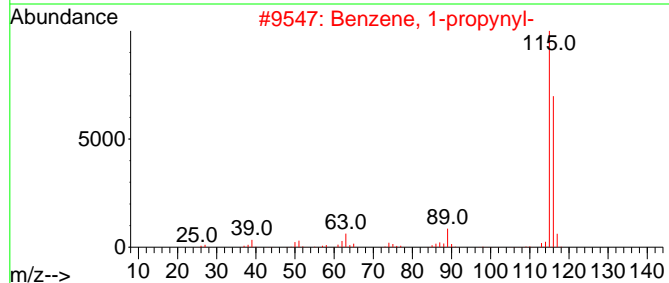
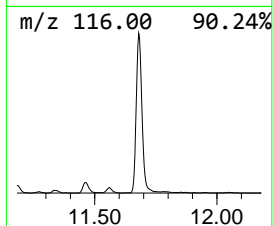
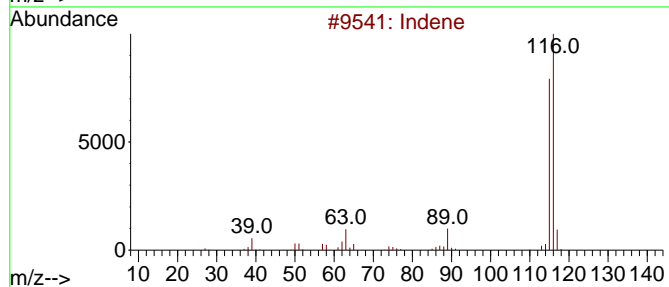
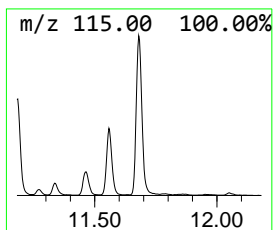
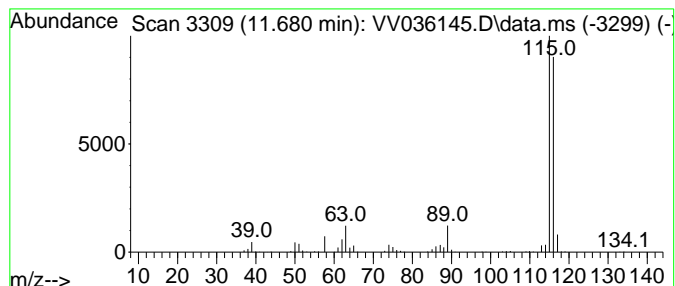
Quant Method : Z:\voasrv\HPCHEM1\MSVOA_V\Method\SFAMVLM053024SMA.M
 Quant Title : VOC Analysis

TIC Library : C:\Database\NIST20.L
 TIC Integration Parameters: LSCINT.P

 Peak Number 8 Indene Concentration Rank 2

R.T.	EstConc	Area	Relative to ISTD	R.T.
11.680	11.79 ug/L	390786	1,4-Dichlorobenzene-d4	11.185

Hit#	of	5	Tentative ID	MW	MolForm	CAS#	Qual
1			Indene	116	C9H8	000095-13-6	97
2			Benzene, 1-propynyl-	116	C9H8	000673-32-5	94
3			Benzene, 1-propynyl-	116	C9H8	000673-32-5	91
4			Benzene, 1-propynyl-	116	C9H8	000673-32-5	91
5			3-Methylphenylacetylene	116	C9H8	000766-82-5	91



Data Path : Z:\voasrv\HPCHEM1\MSVOA_V\Data\VV061924\
 Data File : VV036145.D
 Acq On : 19 Jun 2024 18:14
 Operator : SY/MD
 Sample : P2873-19
 Misc : 2.66g/10.0mL/MSVOA_V/SOIL/B
 ALS Vial : 18 Sample Multiplier: 1

Instrument :
 MSVOA_V
 ClientSampleId :
 C0SK8

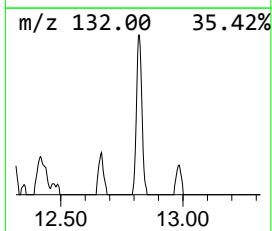
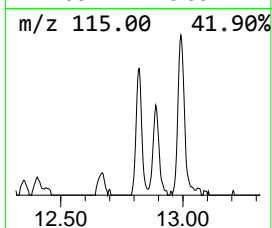
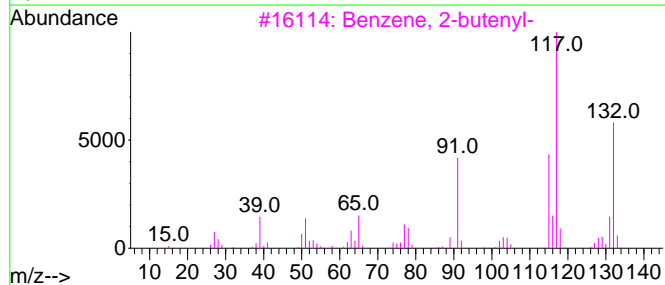
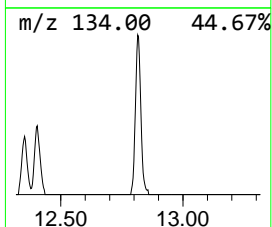
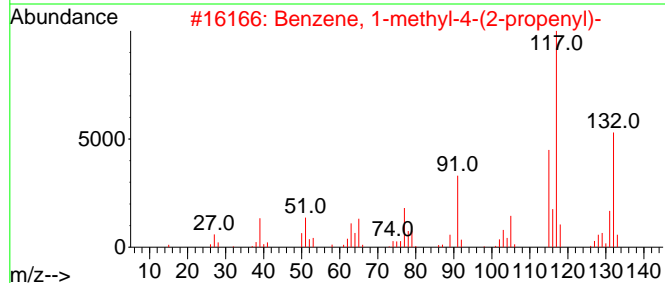
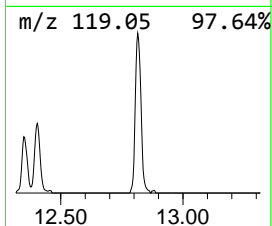
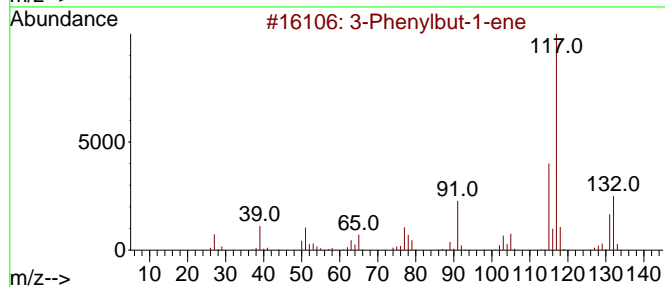
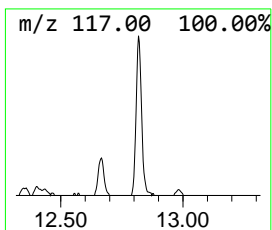
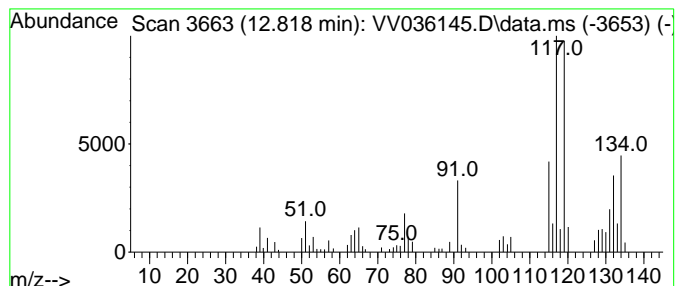
Quant Method : Z:\voasrv\HPCHEM1\MSVOA_V\Method\SFAMVLM053024SMA.M
 Quant Title : VOC Analysis

TIC Library : C:\Database\NIST20.L
 TIC Integration Parameters: LSCINT.P

 Peak Number 9 3-Phenylbut-1-ene Concentration Rank 9

R.T.	EstConc	Area	Relative to ISTD	R.T.
12.818	2.55 ug/L	84647	1,4-Dichlorobenzene-d4	11.185

Hit#	of	5	Tentative ID	MW	MolForm	CAS#	Qual
1			3-Phenylbut-1-ene	132	C10H12	000934-10-1	50
2			Benzene, 1-methyl-4-(2-propenyl)-	132	C10H12	003333-13-9	50
3			Benzene, 2-butenyl-	132	C10H12	001560-06-1	46
4			(E)-1-Phenyl-1-butene	132	C10H12	001005-64-7	46
5			Benzene, 1,2,3,5-tetramethyl-	134	C10H14	000527-53-7	42



Data Path : Z:\voasrv\HPCHEM1\MSVOA_V\Data\VV061924\
 Data File : VV036145.D
 Acq On : 19 Jun 2024 18:14
 Operator : SY/MD
 Sample : P2873-19
 Misc : 2.66g/10.0mL/MSVOA_V/SOIL/B
 ALS Vial : 18 Sample Multiplier: 1

Instrument :
 MSVOA_V
 ClientSampleId :
 C0SK8

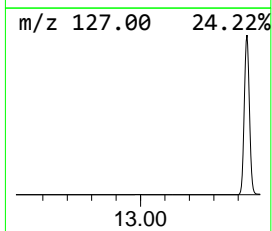
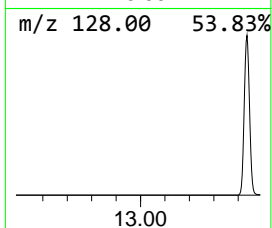
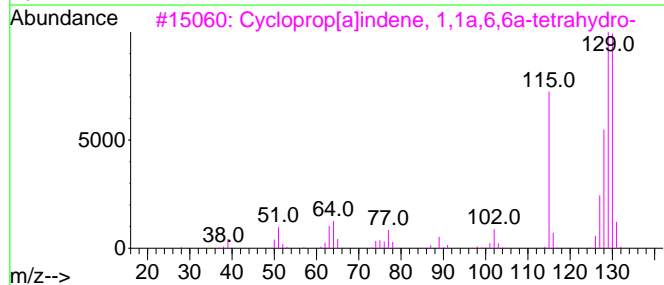
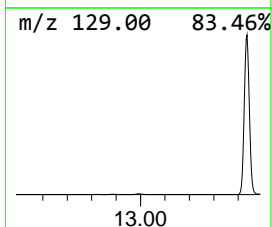
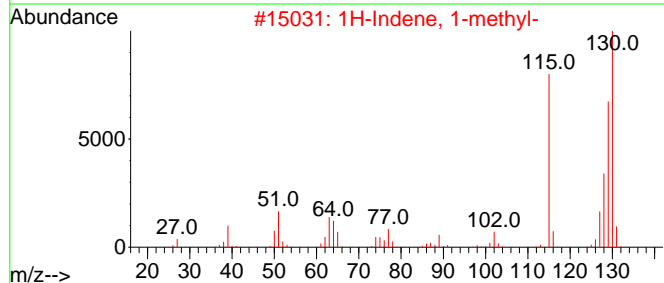
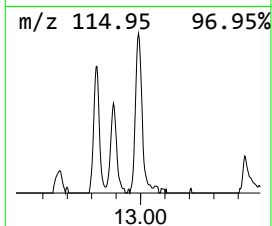
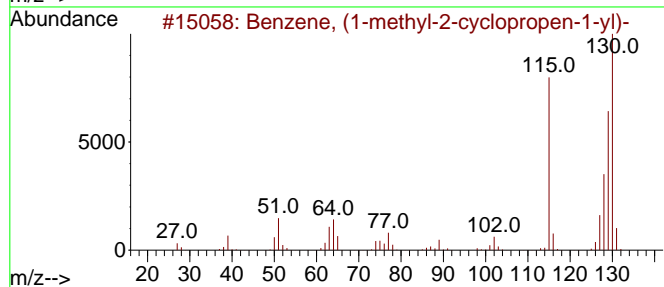
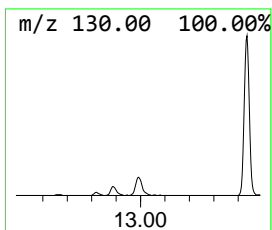
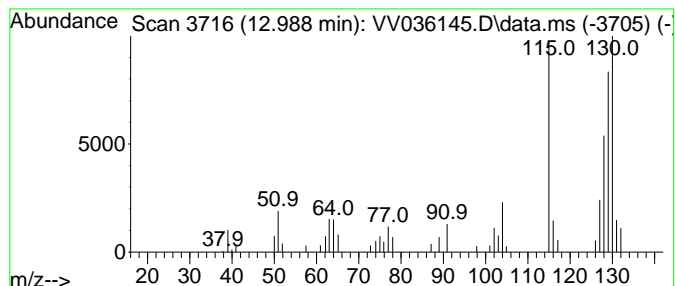
Quant Method : Z:\voasrv\HPCHEM1\MSVOA_V\Method\SFAMVLM053024SMA.M
 Quant Title : VOC Analysis

TIC Library : C:\Database\NIST20.L
 TIC Integration Parameters: LSCINT.P

 Peak Number 10 Benzene, (1-methyl-2-cyclop... Concentration Rank 13

R.T.	EstConc	Area	Relative to ISTD	R.T.
12.989	1.51 ug/L	49944	1,4-Dichlorobenzene-d4	11.185

Hit#	of	5	Tentative ID	MW	MolForm	CAS#	Qual
1			Benzene, (1-methyl-2-cyclopropen...	130	C10H10	065051-83-4	96
2			1H-Indene, 1-methyl-	130	C10H10	000767-59-9	95
3			Cycloprop[a]indene, 1,1a,6,6a-te...	130	C10H10	015677-15-3	95
4			1H-Indene, 1-methyl-	130	C10H10	000767-59-9	94
5			2-Methylindene	130	C10H10	002177-47-1	94



Data Path : Z:\voasrv\HPCHEM1\MSVOA_V\Data\VV061924\
 Data File : VV036145.D
 Acq On : 19 Jun 2024 18:14
 Operator : SY/MD
 Sample : P2873-19
 Misc : 2.66g/10.0mL/MSVOA_V/SOIL/B
 ALS Vial : 18 Sample Multiplier: 1

Instrument :
 MSVOA_V
 ClientSampleId :
 C0SK8

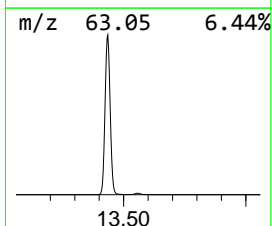
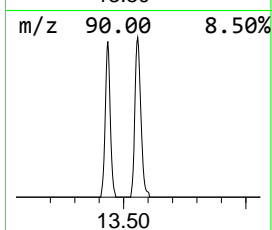
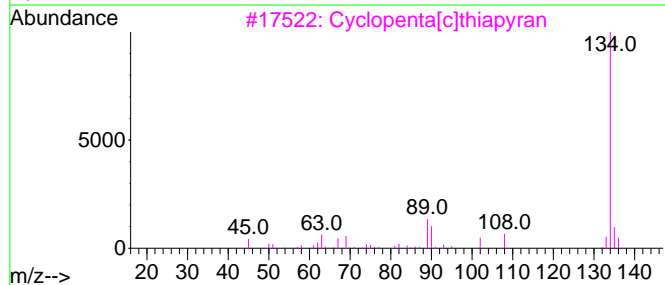
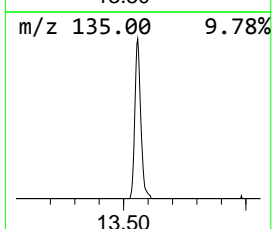
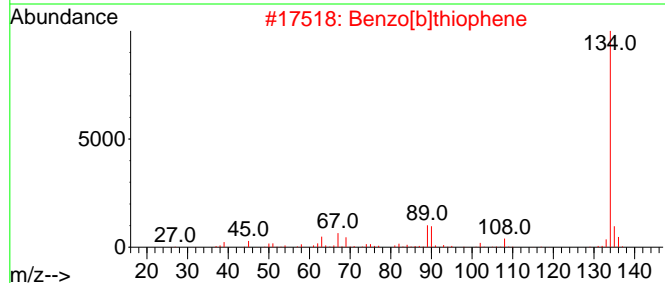
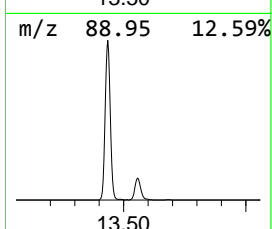
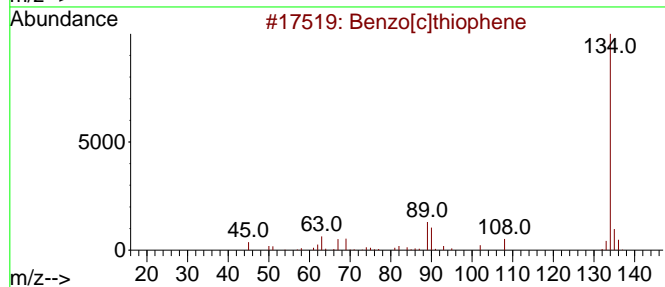
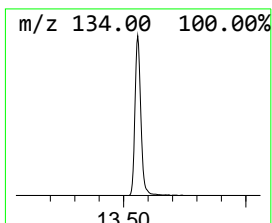
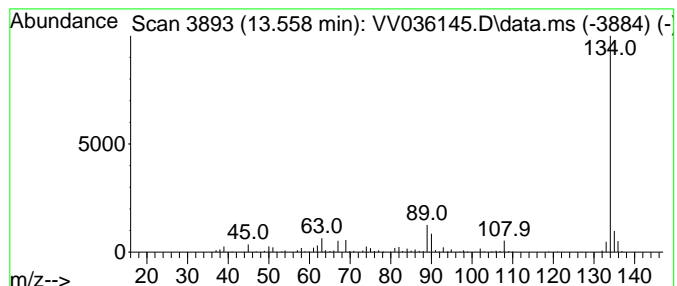
Quant Method : Z:\voasrv\HPCHEM1\MSVOA_V\Method\SFAMVLM053024SMA.M
 Quant Title : VOC Analysis

TIC Library : C:\Database\NIST20.L
 TIC Integration Parameters: LSCINT.P

 Peak Number 12 Benzo[c]thiophene Concentration Rank 3

R.T.	EstConc	Area	Relative to ISTD	R.T.
13.558	7.38 ug/L	244604	1,4-Dichlorobenzene-d4	11.185

Hit#	of	5	Tentative ID	MW	MolForm	CAS#	Qual
1			Benzo[c]thiophene	134	C8H6S	000270-82-6	95
2			Benzo[b]thiophene	134	C8H6S	000095-15-8	95
3			Cyclopenta[c]thiapyran	134	C8H6S	000270-63-3	94
4			Benzo[b]thiophene	134	C8H6S	000095-15-8	93
5			Benzo[b]thiophene	134	C8H6S	000095-15-8	91



Data Path : Z:\voasrv\HPCHEM1\MSVOA_V\Data\VW061924\
 Data File : VW036145.D
 Acq On : 19 Jun 2024 18:14
 Operator : SY/MD
 Sample : P2873-19
 Misc : 2.66g/10.0mL/MSVOA_V/SOIL/B
 ALS Vial : 18 Sample Multiplier: 1

Instrument :
 MSVOA_V
 ClientSampleId :
 C0SK8

Quant Method : Z:\voasrv\HPCHEM1\MSVOA_V\Method\SFAMVLM053024SMA.M
 Quant Title : VOC Analysis

TIC Library : C:\Database\NIST0.L
 TIC Integration Parameters: LSCINT.P

TIC Top Hit name	RT	EstConc	Units	Response	--Internal Standard--			
					#	RT	Resp	Conc
Benzene, propyl-	10.291	1.7	ug/L	55567	3	11.185	828501	25.0
Benzene, 1-ethy...	10.410	4.0	ug/L	133475	3	11.185	828501	25.0
Benzene, 1-ethy...	10.673	4.7	ug/L	154304	3	11.185	828501	25.0
Benzene, 1-ethy...	11.272	7.2	ug/L	238671	3	11.185	828501	25.0
Benzene, 1-prop...	11.336	2.5	ug/L	81865	3	11.185	828501	25.0
Indane	11.464	6.4	ug/L	212966	3	11.185	828501	25.0
Indene	11.680	11.8	ug/L	390786	3	11.185	828501	25.0
3-Phenylbut-1-ene	12.818	2.5	ug/L	84647	3	11.185	828501	25.0
Benzene, (1-met...	12.989	1.5	ug/L	49944	3	11.185	828501	25.0
Benzo[c]thiophene	13.558	7.4	ug/L	244604	3	11.185	828501	25.0