

Data Path : Z:\voasrv\HPCHEM1\MSVOA_V\Data\VW062524\
 Data File : VW036271.D
 Acq On : 25 Jun 2024 13:17
 Operator : SY/MD
 Sample : P2897-19
 Misc : 5.32g/10.0mL/MSVOA_V/SOIL/A
 ALS Vial : 5 Sample Multiplier: 1

Instrument :
 MSVOA_V
 ClientSampleId :
 C0T67

Integration Parameters: LSCINT.P

Integrator: RTE
 Smoothing : OFF
 Sampling : 1
 Start Thrs : 0.2
 Stop Thrs : 0

Filtering: 5
 Min Area: 0 % of largest Peak
 Max Peaks: 100
 Peak Location: TOP

If leading or trailing edge < 100 prefer < Baseline drop else tangent >
 Peak separation: 5

Method : Z:\voasrv\HPCHEM1\MSVOA_V\Method\SFAMVLM053024SMA.M
 Title : VOC Analysis

Signal : TIC: VW036271.D\data.ms

peak #	R.T. min	first scan	max scan	last scan	PK TY	peak height	corr. area	corr. % max.	% of total
1	1.275	66	73	95	rVB	217410	239153	21.12%	3.102%
2	1.526	145	151	166	rVB	169844	197715	17.46%	2.564%
3	2.050	305	314	342	rVB	376594	557562	49.24%	7.231%
4	2.442	426	436	453	rVB	35247	60038	5.30%	0.779%
5	2.783	539	542	545	rBV2	262	230	0.02%	0.003%
6	2.851	558	563	566	rBV4	590	666	0.06%	0.009%
7	2.960	585	597	614	rBV3	20354	44483	3.93%	0.577%
8	3.134	648	651	655	rBV	262	200	0.02%	0.003%
9	3.294	696	701	702	rBV2	256	199	0.02%	0.003%
10	3.355	717	720	722	rBV	351	186	0.02%	0.002%
11	3.371	722	725	727	rBV2	212	155	0.01%	0.002%
12	3.413	735	738	742	rVB	305	230	0.02%	0.003%
13	3.439	742	746	748	rBV	337	271	0.02%	0.004%
14	3.532	773	775	778	rVB2	379	152	0.01%	0.002%
15	3.552	778	781	782	rBV	364	177	0.02%	0.002%
16	3.606	793	798	802	rBV3	323	355	0.03%	0.005%
17	3.626	802	804	808	rVB	258	171	0.02%	0.002%
18	3.751	837	843	844	rBV2	287	197	0.02%	0.003%
19	3.831	856	868	900	rBV	17949	77383	6.83%	1.004%
20	4.240	980	995	1028	rBV	190521	502747	44.40%	6.520%
21	4.648	1118	1122	1124	rBV2	511	340	0.03%	0.004%
22	4.799	1165	1169	1172	rBV2	245	191	0.02%	0.002%
23	4.825	1173	1177	1182	rVB3	501	367	0.03%	0.005%
24	4.854	1183	1186	1191	rVV2	235	183	0.02%	0.002%
25	4.950	1200	1216	1248	rBV2	441020	1132299	100.00%	14.685%
26	5.172	1284	1285	1287	rBV2	489	200	0.02%	0.003%
27	5.342	1334	1338	1340	rBV2	291	177	0.02%	0.002%
28	5.420	1358	1362	1365	rBV4	340	280	0.02%	0.004%
29	5.439	1365	1368	1371	rBV3	373	279	0.02%	0.004%
30	5.529	1385	1396	1433	rBV	261917	564671	49.87%	7.323%
31	5.738	1459	1461	1464	rBV2	645	420	0.04%	0.005%
32	5.825	1478	1488	1513	rVB2	15915	36697	3.24%	0.476%
33	5.982	1525	1537	1574	rBV	251746	536015	47.34%	6.952%
34	6.294	1631	1634	1636	rBV2	370	208	0.02%	0.003%
35	6.342	1647	1649	1652	rVB3	635	262	0.02%	0.003%
36	6.371	1652	1658	1660	rBV2	440	340	0.03%	0.004%

Data Path : Z:\voasrv\HPCHEM1\MSVOA_V\Data\VV062524\
 Data File : VV036271.D
 Acq On : 25 Jun 2024 13:17
 Operator : SY/MD
 Sample : P2897-19
 Misc : 5.32g/10.0mL/MSVOA_V/SOIL/A
 ALS Vial : 5 Sample Multiplier: 1

Instrument :
 MSVOA_V
 ClientSampleId :
 C0T67

Integration Parameters: LSCINT.P

Integrator: RTE
 Smoothing : OFF
 Sampling : 1
 Start Thrs: 0.2
 Stop Thrs : 0

Filtering: 5
 Min Area: 0 % of largest Peak
 Max Peaks: 100
 Peak Location: TOP

If leading or trailing edge < 100 prefer < Baseline drop else tangent >
 Peak separation: 5

Method : Z:\voasrv\HPCHEM1\MSVOA_V\Method\SFAMVLM053024SMA.M
 Title : VOC Analysis

37	6.436	1675	1678	1679	rBV2	372	186	0.02%	0.002%
38	6.465	1684	1687	1691	rVB2	297	196	0.02%	0.003%
39	6.510	1698	1701	1706	rVB3	168	142	0.01%	0.002%
40	6.558	1714	1716	1719	rBV2	287	190	0.02%	0.002%
41	6.635	1735	1740	1743	rBV3	338	308	0.03%	0.004%
42	6.751	1772	1776	1777	rBV2	214	142	0.01%	0.002%
43	6.912	1813	1826	1853	rBV	105847	213994	18.90%	2.775%
44	7.240	1917	1928	1956	rBV	479138	857145	75.70%	11.117%
45	7.551	2016	2025	2057	rBV	71763	144314	12.75%	1.872%
46	7.873	2117	2125	2136	rVB2	10267	18191	1.61%	0.236%
47	7.937	2143	2145	2149	rVB3	352	195	0.02%	0.003%
48	7.957	2149	2151	2153	rBV2	344	201	0.02%	0.003%
49	7.982	2158	2159	2163	rBV2	246	147	0.01%	0.002%
50	8.030	2166	2174	2208	rBV	76738	176686	15.60%	2.292%
51	8.448	2301	2304	2306	rBV3	565	372	0.03%	0.005%
52	8.503	2319	2321	2327	rVB4	415	373	0.03%	0.005%
53	8.532	2327	2330	2332	rBV2	295	203	0.02%	0.003%
54	8.548	2332	2335	2339	rVV4	640	492	0.04%	0.006%
55	8.574	2339	2343	2346	rVV4	598	455	0.04%	0.006%
56	8.600	2346	2351	2353	rVB4	514	442	0.04%	0.006%
57	8.641	2361	2364	2366	rBV2	356	180	0.02%	0.002%
58	8.706	2379	2384	2385	rBV2	248	251	0.02%	0.003%
59	8.780	2396	2407	2437	rBV	412388	709572	62.67%	9.203%
60	9.130	2514	2516	2520	rBV	470	343	0.03%	0.004%
61	9.194	2533	2536	2539	rBV3	493	347	0.03%	0.005%
62	9.223	2542	2545	2547	rBV2	357	182	0.02%	0.002%
63	9.265	2555	2558	2563	rVB2	474	333	0.03%	0.004%
64	9.288	2563	2565	2569	rBV2	562	312	0.03%	0.004%
65	9.346	2581	2583	2588	rVB2	590	404	0.04%	0.005%
66	9.516	2634	2636	2639	rVV2	273	152	0.01%	0.002%
67	9.551	2643	2647	2649	rBV2	256	161	0.01%	0.002%
68	9.622	2662	2669	2671	rBV3	432	414	0.04%	0.005%
69	9.773	2713	2716	2718	rBV	266	170	0.02%	0.002%
70	9.841	2734	2737	2740	rBV2	391	326	0.03%	0.004%
71	9.905	2754	2757	2762	rBV2	365	340	0.03%	0.004%
72	9.944	2766	2769	2774	rVB2	445	374	0.03%	0.005%
73	9.966	2774	2776	2784	rBV	360	340	0.03%	0.004%
74	10.021	2789	2793	2794	rBV2	545	335	0.03%	0.004%
75	10.098	2814	2817	2818	rBV2	426	280	0.02%	0.004%
76	10.149	2822	2833	2854	rVV	207148	330401	29.18%	4.285%

Data Path : Z:\voasrv\HPCHEM1\MSVOA_V\Data\VW062524\
 Data File : VW036271.D
 Acq On : 25 Jun 2024 13:17
 Operator : SY/MD
 Sample : P2897-19
 Misc : 5.32g/10.0mL/MSVOA_V/SOIL/A
 ALS Vial : 5 Sample Multiplier: 1

Instrument :
 MSVOA_V
 ClientSampleId :
 C0T67

Integration Parameters: LSCINT.P

Integrator: RTE
 Smoothing : OFF Filtering: 5
 Sampling : 1 Min Area: 0 % of largest Peak
 Start Thrs: 0.2 Max Peaks: 100
 Stop Thrs : 0 Peak Location: TOP

If leading or trailing edge < 100 prefer < Baseline drop else tangent >
 Peak separation: 5

Method : Z:\voasrv\HPCHEM1\MSVOA_V\Method\SFAMVLM053024SMA.M
 Title : VOC Analysis

77	10.323	2879	2887	2896	rVB2	10416	15284	1.35%	0.198%
78	10.410	2912	2914	2916	rBV3	276	154	0.01%	0.002%
79	10.522	2946	2949	2952	rBV3	321	214	0.02%	0.003%
80	10.706	3004	3006	3009	rBV	232	135	0.01%	0.002%
81	10.860	3052	3054	3056	rBV2	363	206	0.02%	0.003%
82	11.124	3134	3136	3137	rBV	362	164	0.01%	0.002%
83	11.181	3144	3154	3178	rBV	345963	576758	50.94%	7.480%
84	11.558	3257	3271	3297	rBV	415738	668823	59.07%	8.674%
85	11.812	3346	3350	3353	rBV2	650	478	0.04%	0.006%
86	12.124	3444	3447	3448	rBV	568	304	0.03%	0.004%
87	12.194	3459	3469	3477	rBV2	8066	13176	1.16%	0.171%
88	12.361	3516	3521	3523	rBV3	813	827	0.07%	0.011%
89	12.509	3563	3567	3573	rBV3	515	541	0.05%	0.007%
90	12.644	3606	3609	3611	rVB3	457	269	0.02%	0.003%
91	12.709	3627	3629	3631	rBV2	447	187	0.02%	0.002%
92	12.828	3662	3666	3669	rBV5	1275	1060	0.09%	0.014%
93	13.001	3717	3720	3725	rBV3	412	423	0.04%	0.005%
94	13.143	3759	3764	3767	rVB3	649	385	0.03%	0.005%
95	13.162	3767	3770	3774	rBV3	465	449	0.04%	0.006%
96	13.564	3891	3895	3901	rBV3	511	472	0.04%	0.006%
97	13.982	4017	4025	4035	rVB2	7921	12542	1.11%	0.163%
98	14.123	4065	4069	4075	rVB5	1684	1897	0.17%	0.025%
99	14.149	4075	4077	4081	rVB2	569	367	0.03%	0.005%
100	14.837	4287	4291	4292	rBV	675	509	0.04%	0.007%

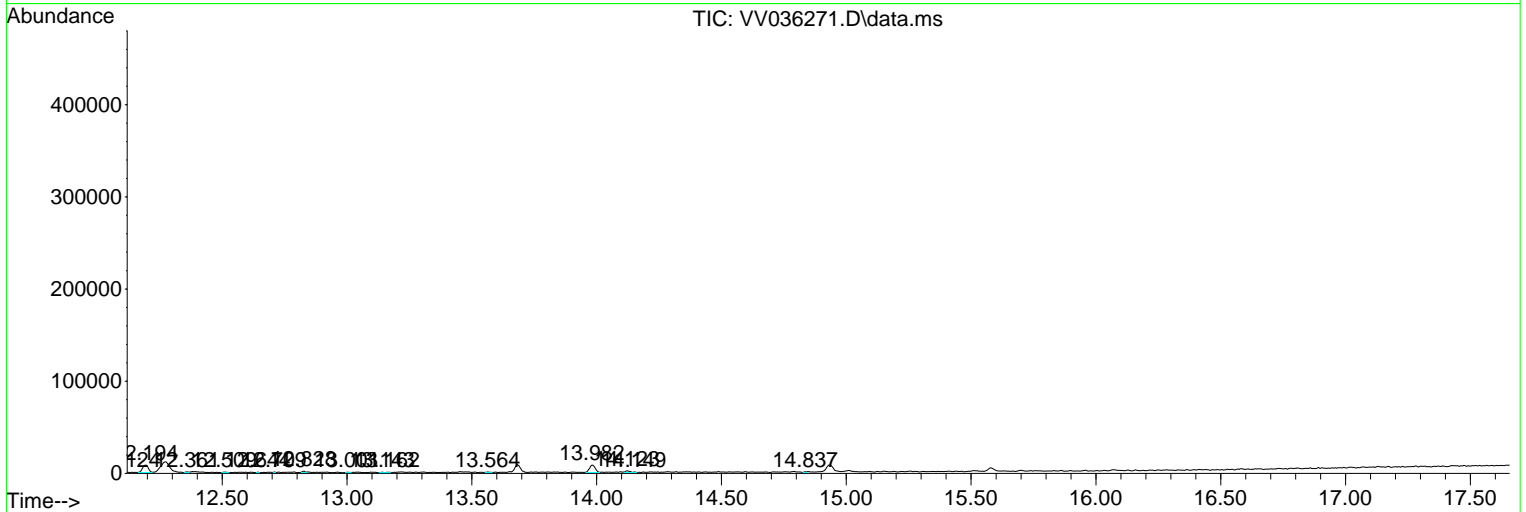
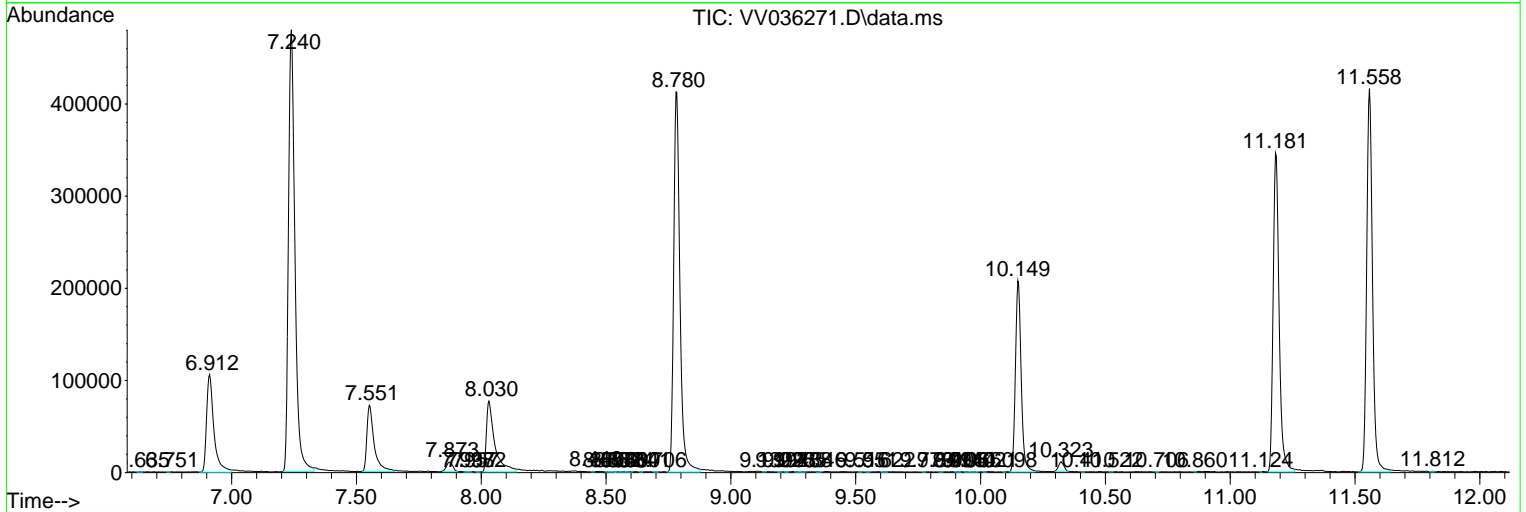
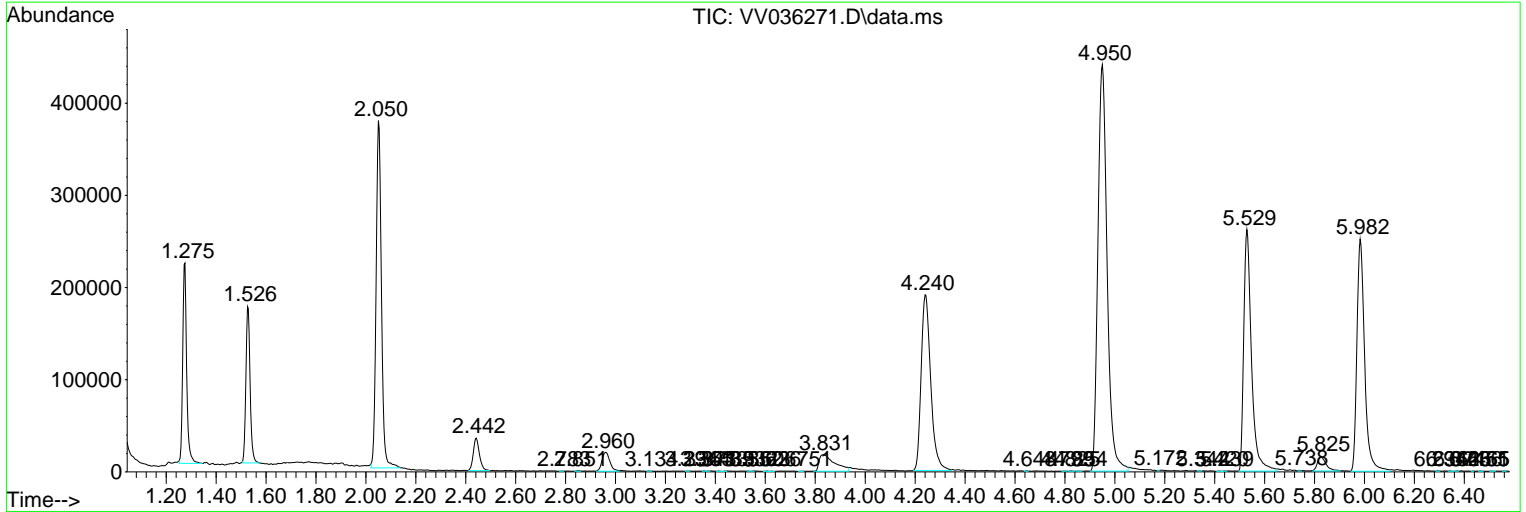
Sum of corrected areas: 7710414

Data Path : Z:\voasrv\HPCHEM1\MSVOA_V\Data\VV062524\
 Data File : VV036271.D
 Acq On : 25 Jun 2024 13:17
 Operator : SY/MD
 Sample : P2897-19
 Misc : 5.32g/10.0mL/MSVOA_V/SOIL/A
 ALS Vial : 5 Sample Multiplier: 1

Instrument :
 MSVOA_V
 ClientSampleId :
 C0T67

Quant Method : Z:\voasrv\HPCHEM1\MSVOA_V\Method\SFAMVLM053024SMA.M
 Quant Title : VOC Analysis

TIC Library : C:\Database\NIST20.L
 TIC Integration Parameters: LSCINT.P



Data Path : Z:\voasrv\HPCHEM1\MSVOA_V\Data\VV062524\
 Data File : VV036271.D
 Acq On : 25 Jun 2024 13:17
 Operator : SY/MD
 Sample : P2897-19
 Misc : 5.32g/10.0mL/MSVOA_V/SOIL/A
 ALS Vial : 5 Sample Multiplier: 1

Instrument :
 MSVOA_V
 ClientSampleId :
 C0T67

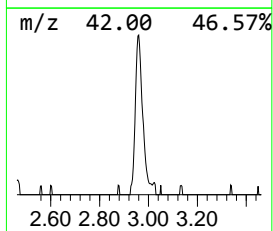
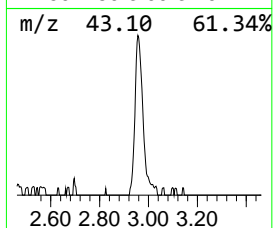
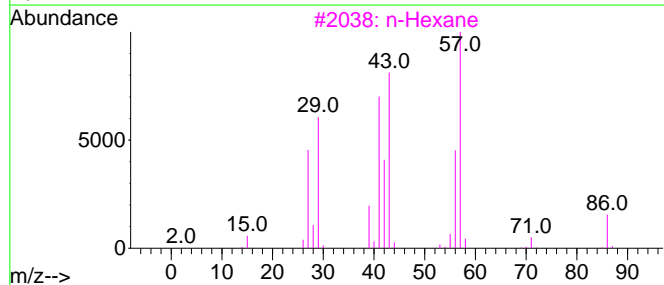
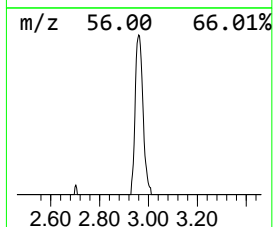
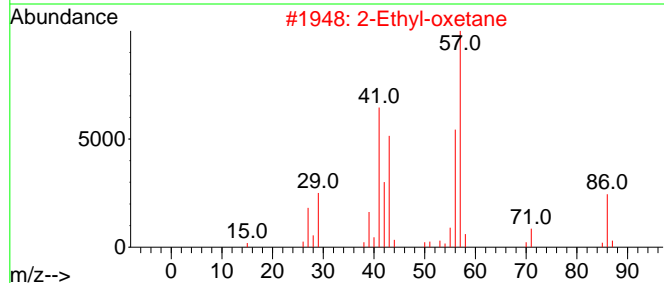
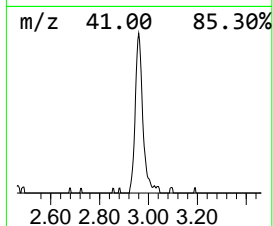
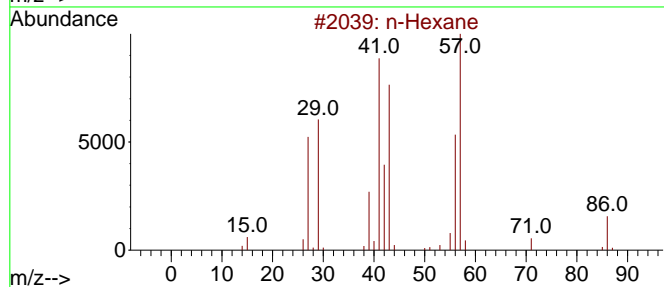
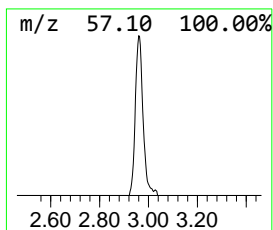
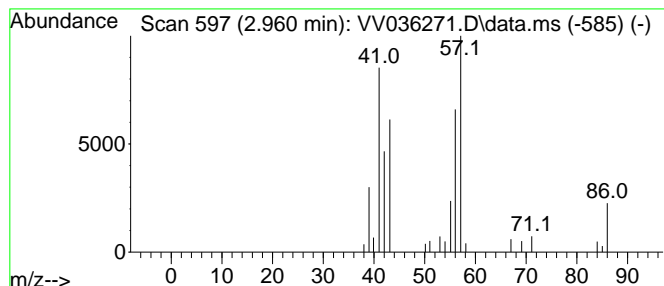
Quant Method : Z:\voasrv\HPCHEM1\MSVOA_V\Method\SFAMVLM053024SMA.M
 Quant Title : VOC Analysis

TIC Library : C:\Database\NIST20.L
 TIC Integration Parameters: LSCINT.P

 Peak Number 1 (DEL) Alkane: Straight-Chai... Concentration Rank 2

R.T.	EstConc	Area	Relative to ISTD	R.T.
2.960	1.97 ug/L	44483	1,4-Difluorobenzene	5.529

Hit#	of 5	Tentative ID	MW	MolForm	CAS#	Qual
1		n-Hexane	86	C6H14	000110-54-3	86
2		2-Ethyl-oxetane	86	C5H10O	1010386-40-2	86
3		n-Hexane	86	C6H14	000110-54-3	45
4		Butane, 1-chloro-2-methyl-	106	C5H11Cl	000616-13-7	43
5		1-Hexene	84	C6H12	000592-41-6	38



Data Path : Z:\voasrv\HPCHEM1\MSVOA_V\Data\VW062524\
Data File : VW036271.D
Acq On : 25 Jun 2024 13:17
Operator : SY/MD
Sample : P2897-19
Misc : 5.32g/10.0mL/MSVOA_V/SOIL/A
ALS Vial : 5 Sample Multiplier: 1

Instrument :
MSVOA_V
ClientSampleId :
C0T67

Quant Method : Z:\voasrv\HPCHEM1\MSVOA_V\Method\SFAMVLM053024SMA.M
Quant Title : VOC Analysis

TIC Library : C:\Database\NIST0.L
TIC Integration Parameters: LSCINT.P

TIC Top Hit name	RT	EstConc	Units	Response	--Internal Standard--			
					#	RT	Resp	Conc
(DEL) Alkane: S...	2.960	2.0	ug/L	44483	1	5.529	564671	25.0