

Data Path : Z:\voasrv\HPCHEM1\MSVOA_V\Data\VW062824\
 Data File : VW036349.D
 Acq On : 28 Jun 2024 15:00
 Operator : SY/MD
 Sample : P3035-22
 Misc : 5.22g/10.0mL/MSVOA_V/SOIL/B
 ALS Vial : 16 Sample Multiplier: 1

Instrument :
 MSVOA_V
 ClientSampleId :

Quant Time: Jun 28 23:36:12 2024
 Quant Method : Z:\voasrv\HPCHEM1\MSVOA_V\Method\SFAMVLM062724SMA.M
 Quant Title : VOC Analysis
 QLast Update : Fri Jun 28 23:33:02 2024
 Response via : Initial Calibration

Compound	R.T.	QIon	Response	Conc	Units	Dev(Min)

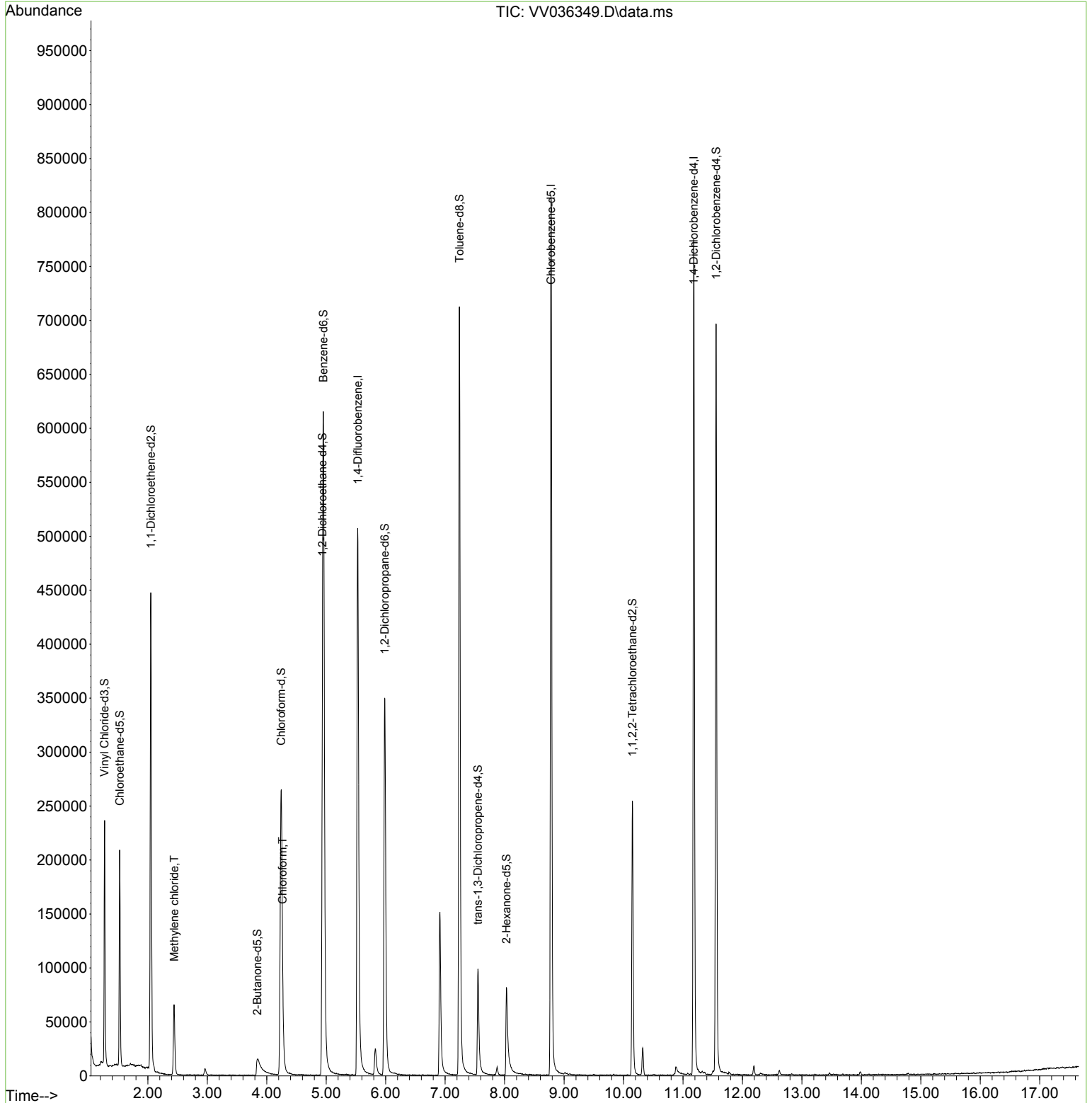
Internal Standards						
1) 1,4-Difluorobenzene	5.529	114	451959	25.000	ug/L	0.00
28) Chlorobenzene-d5	8.783	117	466648	25.000	ug/L	0.00
58) 1,4-Dichlorobenzene-d4	11.181	152	205868	25.000	ug/L	0.00
System Monitoring Compounds						
4) Vinyl Chloride-d3	1.272	65	146314	19.062	ug/L	0.00
Spiked Amount	25.000	Range 30 - 150	Recovery =	76.240%		
7) Chloroethane-d5	1.526	69	132169	21.558	ug/L	0.00
Spiked Amount	25.000	Range 30 - 150	Recovery =	86.240%		
11) 1,1-Dichloroethene-d2	2.050	65	73731	20.434	ug/L	0.00
Spiked Amount	25.000	Range 45 - 110	Recovery =	81.720%		
21) 2-Butanone-d5	3.841	46	38121	21.399	ug/L	0.00
Spiked Amount	50.000	Range 20 - 135	Recovery =	42.800%		
24) Chloroform-d	4.243	84	292354	21.914	ug/L	0.00
Spiked Amount	25.000	Range 40 - 150	Recovery =	87.640%		
26) 1,2-Dichloroethane-d4	4.937	65	151140	21.244	ug/L	0.00
Spiked Amount	25.000	Range 70 - 130	Recovery =	84.960%		
32) Benzene-d6	4.953	84	568501	21.581	ug/L	0.00
Spiked Amount	25.000	Range 20 - 135	Recovery =	86.320%		
36) 1,2-Dichloropropane-d6	5.982	67	176348	22.256	ug/L	0.00
Spiked Amount	25.000	Range 70 - 120	Recovery =	89.040%		
41) Toluene-d8	7.239	98	486735	20.493	ug/L	0.00
Spiked Amount	25.000	Range 30 - 130	Recovery =	81.960%		
43) trans-1,3-Dichloroprop...	7.551	79	63211	17.865	ug/L	0.00
Spiked Amount	25.000	Range 30 - 135	Recovery =	71.440%		
47) 2-Hexanone-d5	8.030	63	31281	24.732	ug/L	0.00
Spiked Amount	50.000	Range 20 - 135	Recovery =	49.460%		
56) 1,1,2,2-Tetrachloroeth...	10.149	84	122669	18.887	ug/L	0.00
Spiked Amount	25.000	Range 45 - 120	Recovery =	75.560%		
66) 1,2-Dichlorobenzene-d4	11.558	152	181615	24.208	ug/L	0.00
Spiked Amount	25.000	Range 75 - 120	Recovery =	96.840%		
Target Compounds						
						Qvalue
16) Methylene chloride	2.442	84	29726	3.341	ug/L	92
25) Chloroform	4.265	83	8210	0.612	ug/L	91

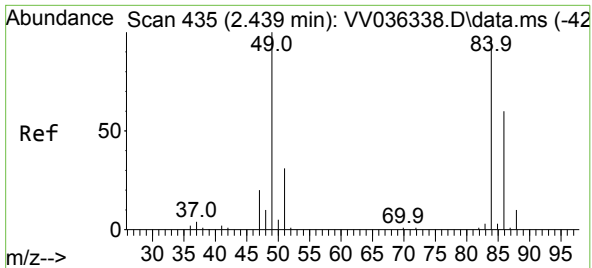
(#) = qualifier out of range (m) = manual integration (+) = signals summed

Data Path : Z:\voasrv\HPCHEM1\MSVOA_V\Data\VV062824\
 Data File : VV036349.D
 Acq On : 28 Jun 2024 15:00
 Operator : SY/MD
 Sample : P3035-22
 Misc : 5.22g/10.0mL/MSVOA_V/SOIL/B
 ALS Vial : 16 Sample Multiplier: 1

Instrument :
 MSVOA_V
 ClientSampleId :

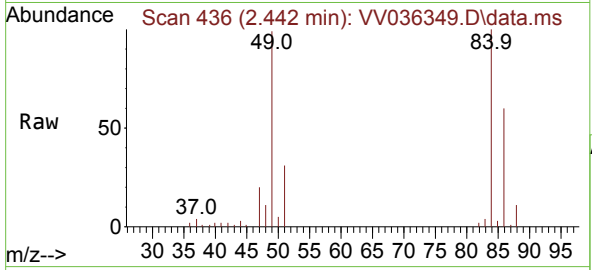
Quant Time: Jun 28 23:36:12 2024
 Quant Method : Z:\voasrv\HPCHEM1\MSVOA_V\Method\SFAMVLM062724SMA.M
 Quant Title : VOC Analysis
 QLast Update : Fri Jun 28 23:33:02 2024
 Response via : Initial Calibration





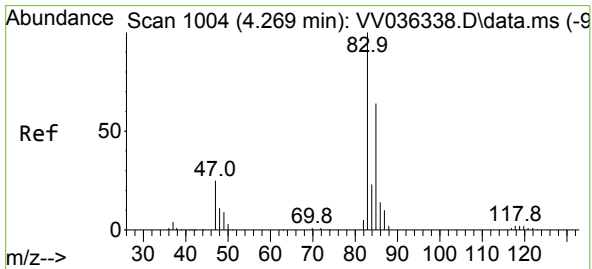
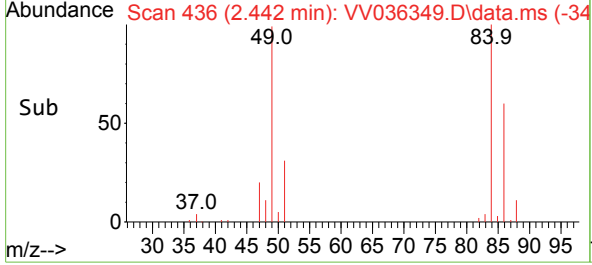
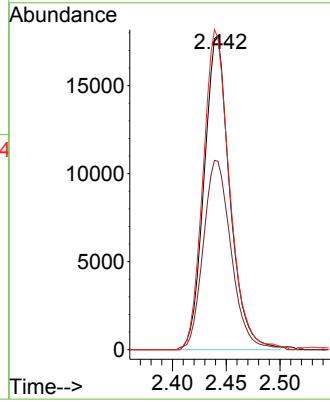
#16
 Methylene chloride
 Concen: 3.341 ug/L
 RT: 2.442 min Scan# 41
 Delta R.T. 0.003 min
 Lab File: VV036349.D
 Acq: 28 Jun 2024 15:00

Instrument : MSVOA_V
 ClientSampleId :



Tgt Ion: 84 Resp: 29726

Ion	Ratio	Lower	Upper
84	100		
86	60.1	45.6	84.8
49	99.3	75.7	140.5



#25
 Chloroform
 Concen: 0.612 ug/L
 RT: 4.265 min Scan# 1003
 Delta R.T. -0.003 min
 Lab File: VV036349.D
 Acq: 28 Jun 2024 15:00

Tgt Ion: 83 Resp: 8210

Ion	Ratio	Lower	Upper
83	100		
85	71.0	45.0	83.6

