

Data Path : Z:\voasrv\HPCHEM1\MSVOA_V\Data\VW062824\
 Data File : VW036351.D
 Acq On : 28 Jun 2024 15:46
 Operator : SY/MD
 Sample : P3035-24
 Misc : 5.17g/10.0mL/MSVOA_V/SOIL/B
 ALS Vial : 18 Sample Multiplier: 1

Instrument :
 MSVOA_V
 ClientSampleId :

Quant Time: Jun 28 23:36:45 2024
 Quant Method : Z:\voasrv\HPCHEM1\MSVOA_V\Method\SFAMVLM062724SMA.M
 Quant Title : VOC Analysis
 QLast Update : Fri Jun 28 23:33:02 2024
 Response via : Initial Calibration

Compound	R.T.	QIon	Response	Conc	Units	Dev(Min)

Internal Standards						
1) 1,4-Difluorobenzene	5.532	114	214688	25.000	ug/L	0.00
28) Chlorobenzene-d5	8.783	117	232712	25.000	ug/L	0.00
58) 1,4-Dichlorobenzene-d4	11.184	152	101969	25.000	ug/L	0.00
System Monitoring Compounds						
4) Vinyl Chloride-d3	1.275	65	81338	22.308	ug/L	0.00
Spiked Amount	25.000	Range 30 - 150	Recovery =	89.240%		
7) Chloroethane-d5	1.529	69	76248	26.182	ug/L	0.00
Spiked Amount	25.000	Range 30 - 150	Recovery =	104.720%		
11) 1,1-Dichloroethene-d2	2.053	65	39610	23.109	ug/L	0.00
Spiked Amount	25.000	Range 45 - 110	Recovery =	92.440%		
21) 2-Butanone-d5	4.040	46	166	0.196	ug/L	0.19
Spiked Amount	50.000	Range 20 - 135	Recovery =	0.400%#		
24) Chloroform-d	4.246	84	158404	24.996	ug/L	0.00
Spiked Amount	25.000	Range 40 - 150	Recovery =	100.000%		
26) 1,2-Dichloroethane-d4	4.940	65	79404	23.496	ug/L	0.00
Spiked Amount	25.000	Range 70 - 130	Recovery =	94.000%		
32) Benzene-d6	4.956	84	293127	22.314	ug/L	0.00
Spiked Amount	25.000	Range 20 - 135	Recovery =	89.240%		
36) 1,2-Dichloropropane-d6	5.985	67	91749	23.219	ug/L	0.00
Spiked Amount	25.000	Range 70 - 120	Recovery =	92.880%		
41) Toluene-d8	7.243	98	241170	20.362	ug/L	0.00
Spiked Amount	25.000	Range 30 - 130	Recovery =	81.440%		
43) trans-1,3-Dichloroprop...	7.554	79	30165	17.095	ug/L	0.00
Spiked Amount	25.000	Range 30 - 135	Recovery =	68.400%		
47) 2-Hexanone-d5	8.033	63	11990	19.010	ug/L	0.00
Spiked Amount	50.000	Range 20 - 135	Recovery =	38.020%		
56) 1,1,2,2-Tetrachloroeth...	10.152	84	63634	19.646	ug/L	0.00
Spiked Amount	25.000	Range 45 - 120	Recovery =	78.600%		
66) 1,2-Dichlorobenzene-d4	11.557	152	89426	24.066	ug/L	0.00
Spiked Amount	25.000	Range 75 - 120	Recovery =	96.280%		

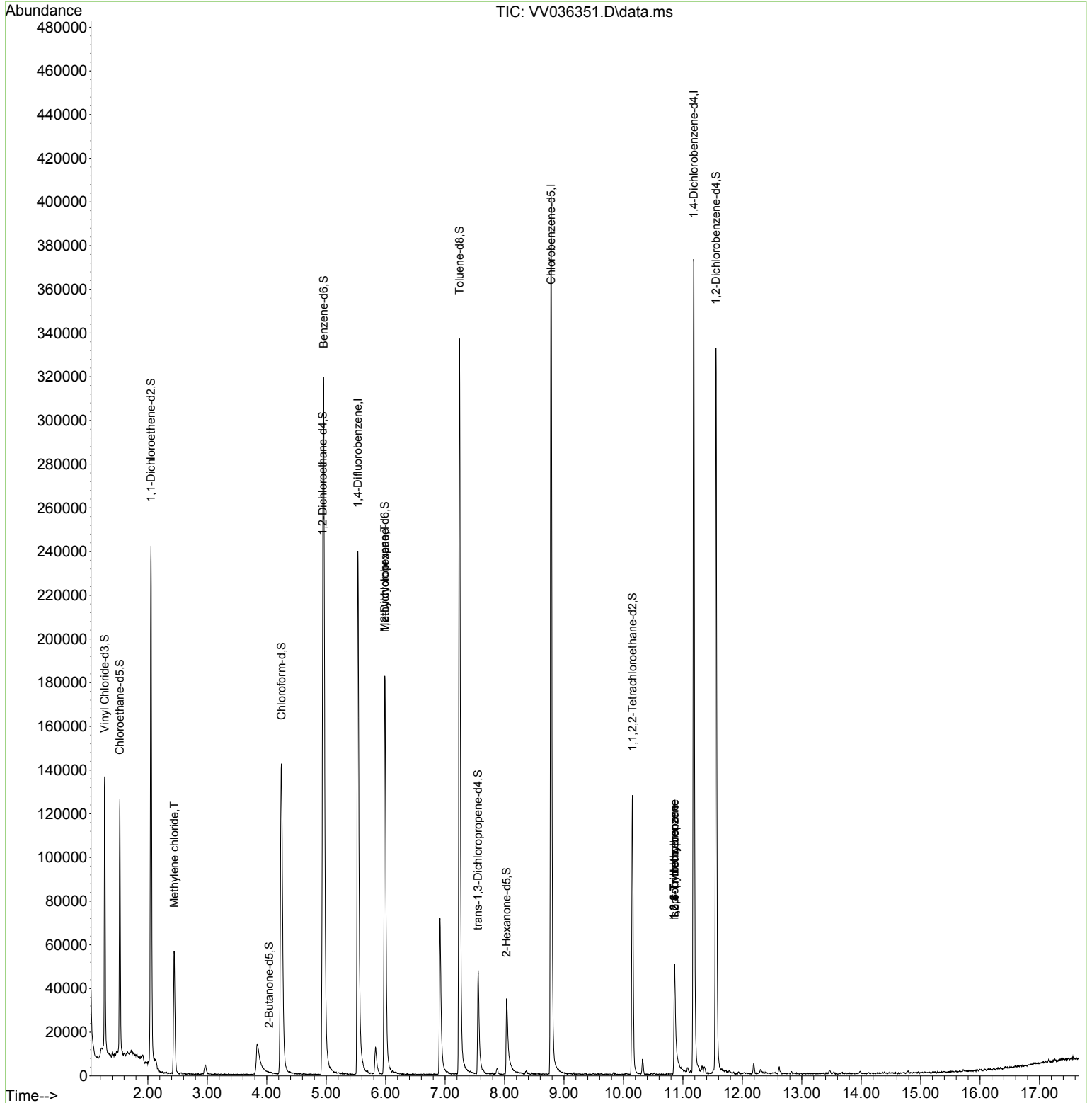
Target Compounds						Qvalue
16) Methylene chloride	2.442	84	25022	5.920	ug/L	98
35) Methylcyclohexane	5.985	83	22632	3.734	ug/L #	21
60) Isopropylbenzene	10.860	105	23438	1.901	ug/L #	1
61) 1,2,3-Trichloropropane	10.860	75	1016	0.442	ug/L #	1
62) 1,3,5-Trimethylbenzene	10.860	105	23438	2.657	ug/L #	28
63) 1,2,4-Trimethylbenzene	10.860	105	23438	2.445	ug/L #	31

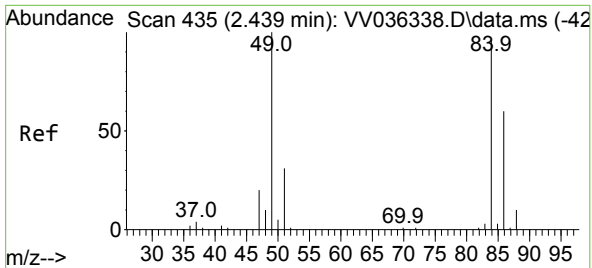
(#) = qualifier out of range (m) = manual integration (+) = signals summed

Data Path : Z:\voasrv\HPCHEM1\MSVOA_V\Data\VV062824\
 Data File : VV036351.D
 Acq On : 28 Jun 2024 15:46
 Operator : SY/MD
 Sample : P3035-24
 Misc : 5.17g/10.0mL/MSVOA_V/SOIL/B
 ALS Vial : 18 Sample Multiplier: 1

Instrument :
 MSVOA_V
 ClientSampleId :

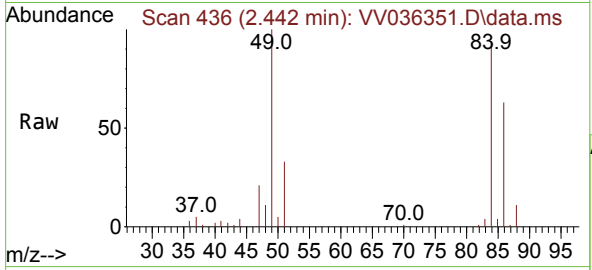
Quant Time: Jun 28 23:36:45 2024
 Quant Method : Z:\voasrv\HPCHEM1\MSVOA_V\Method\SFAMVLM062724SMA.M
 Quant Title : VOC Analysis
 QLast Update : Fri Jun 28 23:33:02 2024
 Response via : Initial Calibration





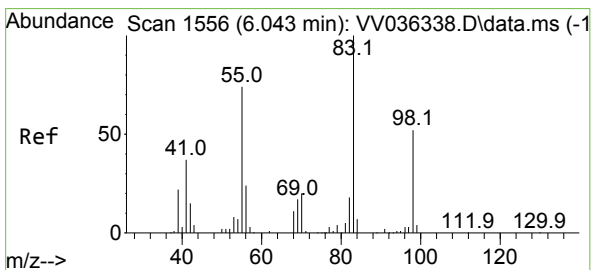
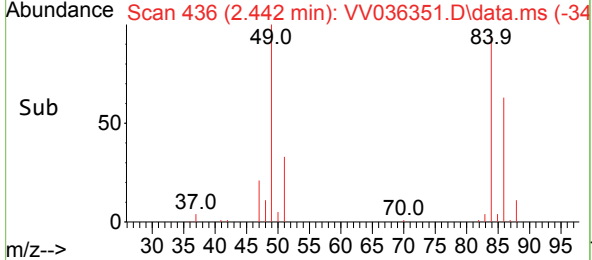
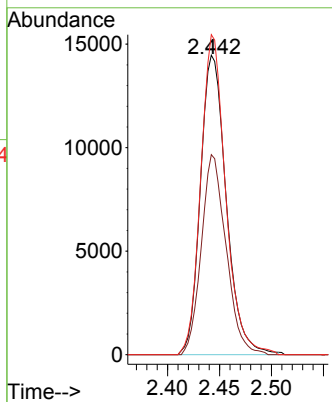
#16
 Methylene chloride
 Concen: 5.920 ug/L
 RT: 2.442 min Scan# 41
 Delta R.T. 0.003 min
 Lab File: VV036351.D
 Acq: 28 Jun 2024 15:46

Instrument : MSVOA_V
 ClientSampleId :



Tgt Ion: 84 Resp: 25022

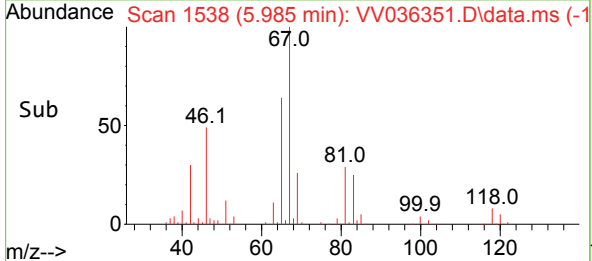
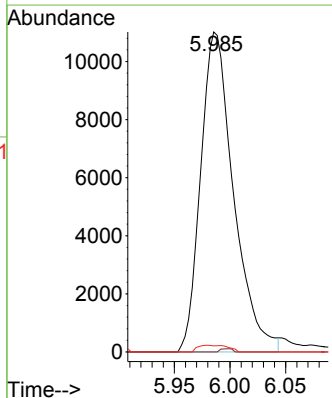
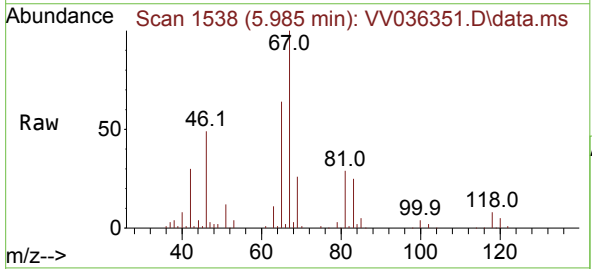
Ion	Ratio	Lower	Upper
84	100		
86	66.8	45.6	84.8
49	106.8	75.7	140.5

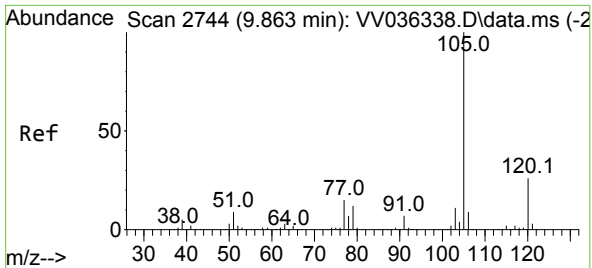


#35
 Methylcyclohexane
 Concen: 3.734 ug/L
 RT: 5.985 min Scan# 1538
 Delta R.T. -0.058 min
 Lab File: VV036351.D
 Acq: 28 Jun 2024 15:46

Tgt Ion: 83 Resp: 22632

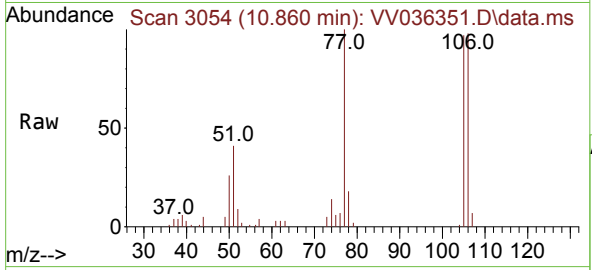
Ion	Ratio	Lower	Upper
83	100		
55	0.0	56.0	84.0#
98	1.0	39.0	58.6#



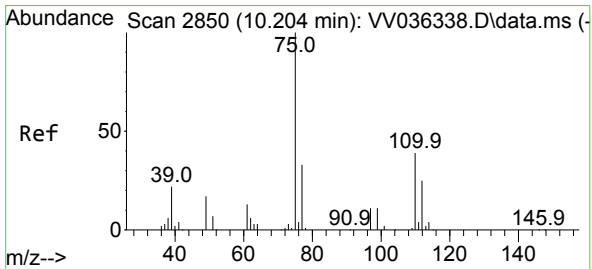
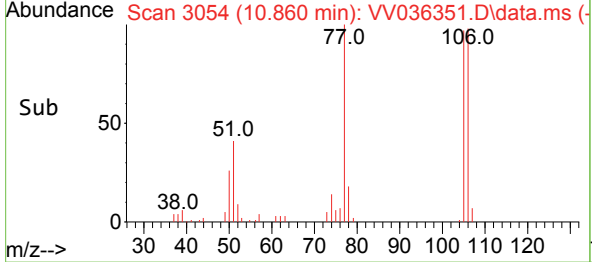
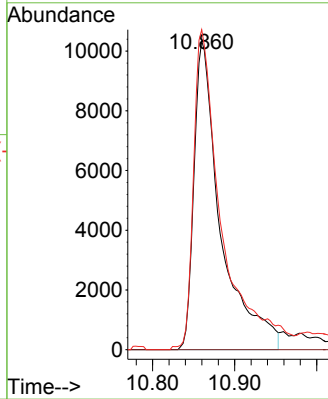


#60
 Isopropylbenzene
 Concen: 1.901 ug/L
 RT: 10.860 min Scan# 3054
 Delta R.T. 0.996 min
 Lab File: VV036351.D
 Acq: 28 Jun 2024 15:46

Instrument : MSVOA_V
 ClientSampleId :

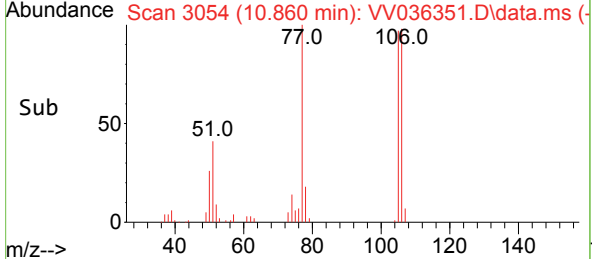
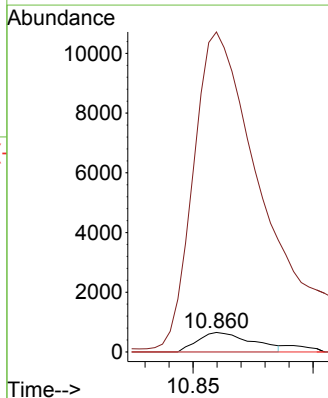
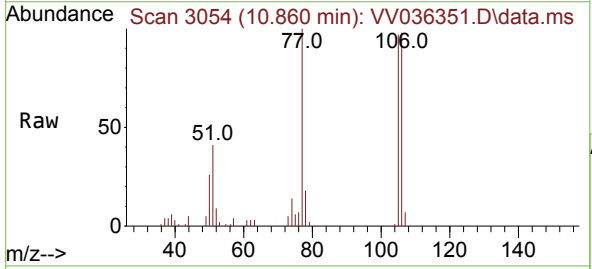


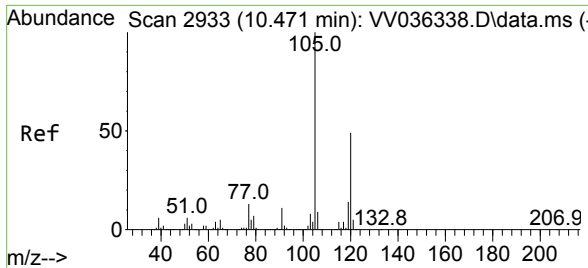
Tgt Ion	Resp	Lower	Upper
105	100		
120	0.0	21.2	31.8#
77	99.5	12.5	18.7#



#61
 1,2,3-Trichloropropane
 Concen: 0.442 ug/L
 RT: 10.860 min Scan# 3054
 Delta R.T. 0.656 min
 Lab File: VV036351.D
 Acq: 28 Jun 2024 15:46

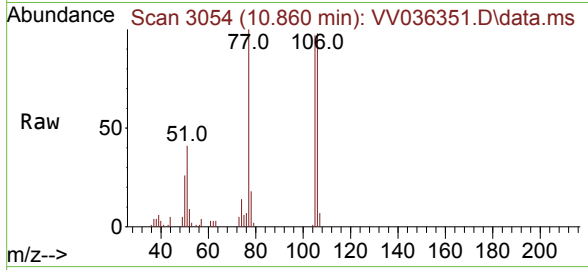
Tgt Ion	Resp	Lower	Upper
75	100		
77	2295.9	25.2	37.8#
110	0.0	31.7	47.5#



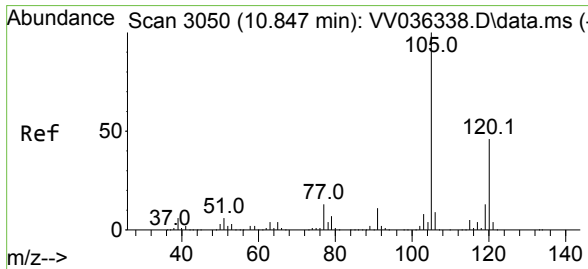
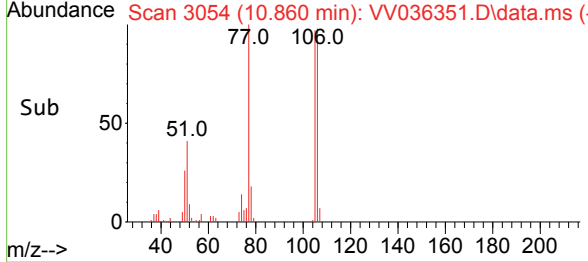
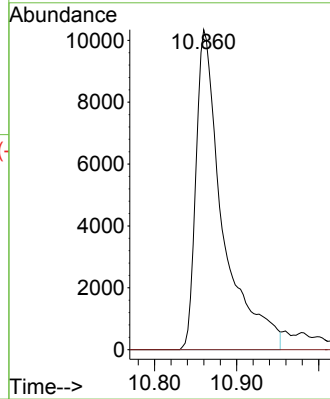


#62
 1,3,5-Trimethylbenzene
 Concen: 2.657 ug/L
 RT: 10.860 min Scan# 3054
 Delta R.T. 0.389 min
 Lab File: VV036351.D
 Acq: 28 Jun 2024 15:46

Instrument : MSVOA_V
 ClientSampleId :



Tgt Ion:105 Resp: 23438
 Ion Ratio Lower Upper
 105 100
 120 0.0 39.1 58.7#



#63
 1,2,4-Trimethylbenzene
 Concen: 2.445 ug/L
 RT: 10.860 min Scan# 3054
 Delta R.T. 0.013 min
 Lab File: VV036351.D
 Acq: 28 Jun 2024 15:46

Tgt Ion:105 Resp: 23438
 Ion Ratio Lower Upper
 105 100
 120 0.0 36.2 54.4#

