

Data Path : Z:\voasrv\HPCHEM1\MSVOA\_V\Data\VW070124\  
 Data File : VW036371.D  
 Acq On : 01 Jul 2024 13:30  
 Operator : SY/MD  
 Sample : P3035-25  
 Misc : 4.57g/10.0mL/MSVOA\_V/SOIL/A  
 ALS Vial : 12 Sample Multiplier: 1

Instrument :  
 MSVOA\_V  
 ClientSampleId :

Quant Time: Jul 02 02:37:32 2024  
 Quant Method : Z:\voasrv\HPCHEM1\MSVOA\_V\Method\SFAMVLM062724SMA.M  
 Quant Title : VOC Analysis  
 QLast Update : Tue Jul 02 02:29:42 2024  
 Response via : Initial Calibration

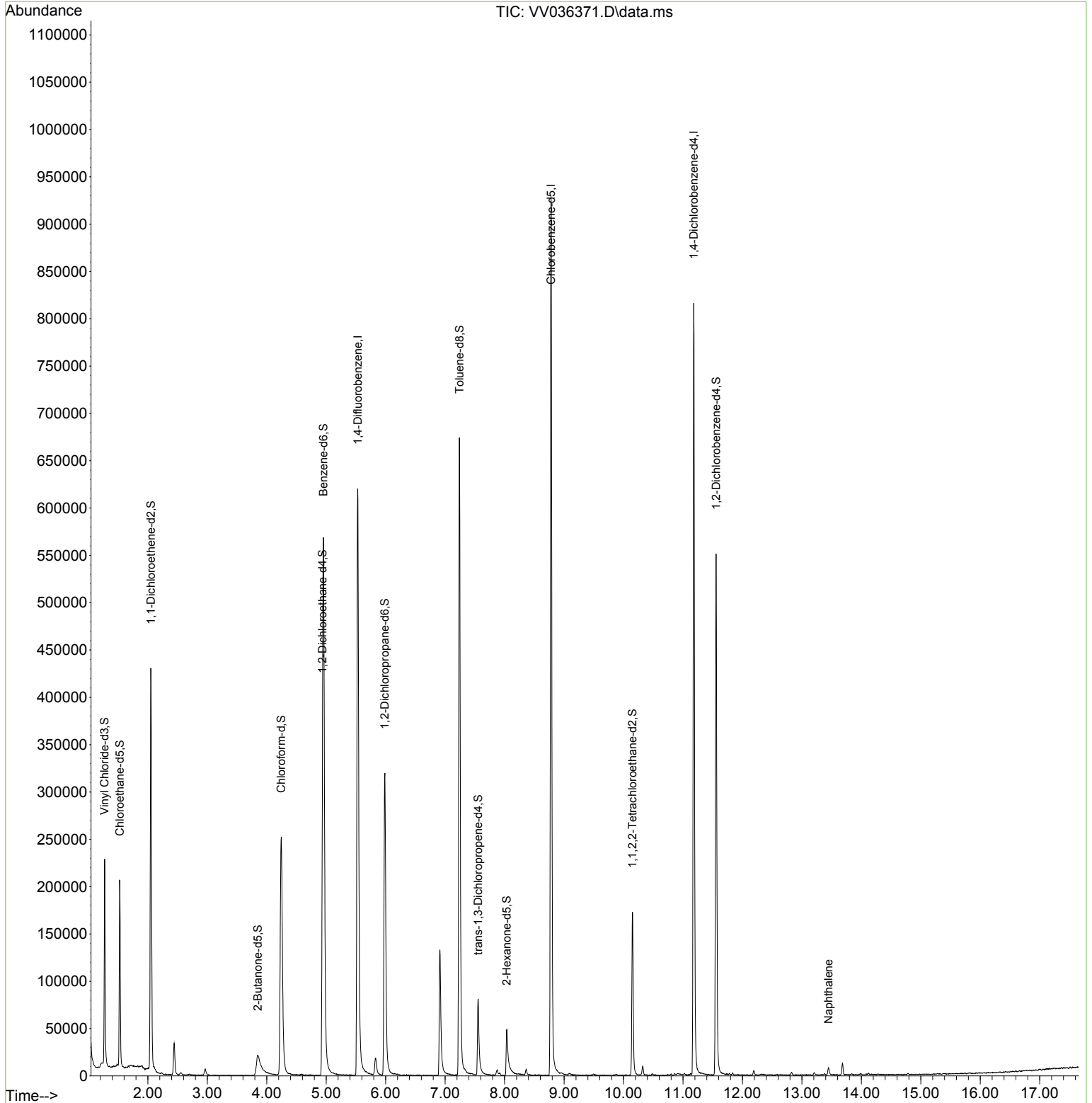
Compound	R.T.	QIon	Response	Conc	Units	Dev(Min)
-----						
Internal Standards						
1) 1,4-Difluorobenzene	5.529	114	552941	25.000	ug/L	0.00
28) Chlorobenzene-d5	8.780	117	525650	25.000	ug/L	0.00
58) 1,4-Dichlorobenzene-d4	11.182	152	214422	25.000	ug/L	0.00
System Monitoring Compounds						
4) Vinyl Chloride-d3	1.272	65	141522	15.071	ug/L	0.00
Spiked Amount	25.000	Range 30 - 150	Recovery =	60.280%		
7) Chloroethane-d5	1.526	69	129724	17.295	ug/L	0.00
Spiked Amount	25.000	Range 30 - 150	Recovery =	69.200%		
11) 1,1-Dichloroethene-d2	2.050	65	70771	16.031	ug/L	0.00
Spiked Amount	25.000	Range 45 - 110	Recovery =	64.120%		
21) 2-Butanone-d5	3.847	46	24380	11.186	ug/L	0.00
Spiked Amount	50.000	Range 20 - 135	Recovery =	22.380%		
24) Chloroform-d	4.243	84	281336	17.237	ug/L	0.00
Spiked Amount	25.000	Range 40 - 150	Recovery =	68.960%		
26) 1,2-Dichloroethane-d4	4.937	65	120780	13.876	ug/L	0.00
Spiked Amount	25.000	Range 70 - 130	Recovery =	55.520%#		
32) Benzene-d6	4.954	84	537756	18.123	ug/L	0.00
Spiked Amount	25.000	Range 20 - 135	Recovery =	72.480%		
36) 1,2-Dichloropropane-d6	5.986	67	161344	18.077	ug/L	0.00
Spiked Amount	25.000	Range 70 - 120	Recovery =	72.320%		
41) Toluene-d8	7.240	98	463821	17.336	ug/L	0.00
Spiked Amount	25.000	Range 30 - 130	Recovery =	69.360%		
43) trans-1,3-Dichloroprop...	7.555	79	53675	13.467	ug/L	0.00
Spiked Amount	25.000	Range 30 - 135	Recovery =	53.880%		
47) 2-Hexanone-d5	8.037	63	19580	13.743	ug/L	0.00
Spiked Amount	50.000	Range 20 - 135	Recovery =	27.480%		
56) 1,1,2,2-Tetrachloroeth...	10.149	84	86380	11.807	ug/L	0.00
Spiked Amount	25.000	Range 45 - 120	Recovery =	47.240%		
66) 1,2-Dichlorobenzene-d4	11.558	152	146648	18.768	ug/L	0.00
Spiked Amount	25.000	Range 75 - 120	Recovery =	75.080%		
Target Compounds						
71) Naphthalene	13.448	128	7250	0.501	ug/L #	95
-----						

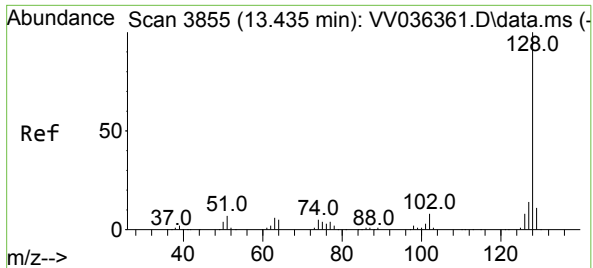
(#) = qualifier out of range (m) = manual integration (+) = signals summed

Data Path : Z:\voasrv\HPCHEM1\MSVOA\_V\Data\VV070124\  
 Data File : VV036371.D  
 Acq On : 01 Jul 2024 13:30  
 Operator : SY/MD  
 Sample : P3035-25  
 Misc : 4.57g/10.0mL/MSVOA\_V/SOIL/A  
 ALS Vial : 12 Sample Multiplier: 1

Instrument :  
 MSVOA\_V  
 ClientSampleId :

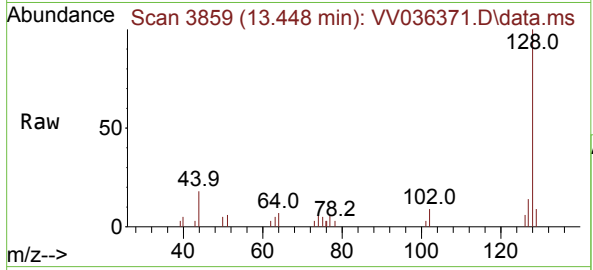
Quant Time: Jul 02 02:37:32 2024  
 Quant Method : Z:\voasrv\HPCHEM1\MSVOA\_V\Method\SFAMVLM062724SMA.M  
 Quant Title : VOC Analysis  
 QLast Update : Tue Jul 02 02:29:42 2024  
 Response via : Initial Calibration





#71  
 Naphthalene  
 Concen: 0.501 ug/L  
 RT: 13.448 min Scan# 3859  
 Delta R.T. 0.013 min  
 Lab File: VV036371.D  
 Acq: 01 Jul 2024 13:30

Instrument : MSVOA\_V  
 ClientSampleId :



Tgt Ion:128 Resp: 7250

Ion	Ratio	Lower	Upper
128	100		
127	11.8	10.8	16.2
129	8.5	8.6	13.0#

