

Data Path : Z:\voasrv\HPCHEM1\MSVOA_V\Data\VV070324\
 Data File : VV036437.D
 Acq On : 03 Jul 2024 12:38
 Operator : SY/MD
 Sample : P3100-19
 Misc : 5.05g/10.0mL/MSVOA_V/SOIL/A
 ALS Vial : 12 Sample Multiplier: 1

Instrument :
 MSVOA_V
 ClientSampleId :
 A4D32

Integration Parameters: LSCINT.P

Integrator: RTE
 Smoothing : OFF
 Sampling : 1
 Start Thrs : 0.2
 Stop Thrs : 0

Filtering: 5
 Min Area: 0 % of largest Peak
 Max Peaks: 100
 Peak Location: TOP

If leading or trailing edge < 100 prefer < Baseline drop else tangent >
 Peak separation: 5

Method : Z:\voasrv\HPCHEM1\MSVOA_V\Method\SFAMVLM062724SMA.M
 Title : VOC Analysis

Signal : TIC: VV036437.D\data.ms

peak #	R.T. min	first scan	max scan	last scan	PK TY	peak height	corr. area	corr. % max.	% of total
1	1.272	66	72	88	rVB	251623	272927	19.55%	2.930%
2	1.526	144	151	167	rVB	206865	243345	17.43%	2.613%
3	2.050	305	314	335	rVB	450695	665704	47.70%	7.147%
4	2.439	427	435	450	rVB2	31318	53055	3.80%	0.570%
5	2.542	465	467	469	rBV2	515	295	0.02%	0.003%
6	2.719	518	522	526	rBV2	347	353	0.03%	0.004%
7	2.918	583	584	587	rBV	179	98	0.01%	0.001%
8	2.963	587	598	612	rBV2	7715	16085	1.15%	0.173%
9	3.056	624	627	631	rBV3	304	237	0.02%	0.003%
10	3.246	683	686	687	rBV	213	118	0.01%	0.001%
11	3.278	692	696	699	rBV2	581	354	0.03%	0.004%
12	3.519	769	771	775	rVB	195	98	0.01%	0.001%
13	3.597	792	795	799	rBV2	280	247	0.02%	0.003%
14	3.732	833	837	838	rBV2	235	108	0.01%	0.001%
15	3.844	862	872	881	rBV2	15983	40030	2.87%	0.430%
16	4.243	982	996	1027	rBV2	232137	606107	43.43%	6.507%
17	4.661	1124	1126	1129	rVB3	282	203	0.01%	0.002%
18	4.677	1129	1131	1133	rBV2	459	253	0.02%	0.003%
19	4.950	1201	1216	1252	rBV2	547194	1395728	100.00%	14.984%
20	5.429	1363	1365	1367	rBV3	502	194	0.01%	0.002%
21	5.529	1377	1396	1438	rBV	524350	1111209	79.62%	11.930%
22	5.831	1479	1490	1507	rBV4	13840	32484	2.33%	0.349%
23	5.986	1525	1538	1569	rBV	307625	647427	46.39%	6.951%
24	6.240	1615	1617	1619	rBV2	313	156	0.01%	0.002%
25	6.291	1632	1633	1636	rVB	429	136	0.01%	0.001%
26	6.362	1651	1655	1658	rBV4	714	574	0.04%	0.006%
27	6.381	1658	1661	1663	rVV4	599	369	0.03%	0.004%
28	6.407	1667	1669	1671	rBV2	333	180	0.01%	0.002%
29	6.484	1690	1693	1698	rVB3	346	294	0.02%	0.003%
30	6.510	1698	1701	1706	rBV2	439	295	0.02%	0.003%
31	6.542	1706	1711	1716	rVB3	370	357	0.03%	0.004%
32	6.568	1716	1719	1723	rBV	350	202	0.01%	0.002%
33	6.619	1733	1735	1740	rVB	327	205	0.01%	0.002%
34	6.674	1749	1752	1758	rVB3	382	353	0.03%	0.004%
35	6.719	1758	1766	1769	rBV4	527	657	0.05%	0.007%
36	6.789	1785	1788	1791	rBV2	252	121	0.01%	0.001%

Data Path : Z:\voasrv\HPCHEM1\MSVOA_V\Data\VV070324\
 Data File : VV036437.D
 Acq On : 03 Jul 2024 12:38
 Operator : SY/MD
 Sample : P3100-19
 Misc : 5.05g/10.0mL/MSVOA_V/SOIL/A
 ALS Vial : 12 Sample Multiplier: 1

Instrument :
 MSVOA_V
 ClientSampleId :
 A4D32

Integration Parameters: LSCINT.P

Integrator: RTE
 Smoothing : OFF
 Sampling : 1
 Start Thrs: 0.2
 Stop Thrs : 0

Filtering: 5
 Min Area: 0 % of largest Peak
 Max Peaks: 100
 Peak Location: TOP

If leading or trailing edge < 100 prefer < Baseline drop else tangent >
 Peak separation: 5

Method : Z:\voasrv\HPCHEM1\MSVOA_V\Method\SFAMVLM062724SMA.M
 Title : VOC Analysis

37	6.818	1793	1797	1801	rBV	296	210	0.02%	0.002%
38	6.847	1805	1806	1808	rVB	334	103	0.01%	0.001%
39	6.870	1810	1813	1816	rBV2	233	167	0.01%	0.002%
40	6.912	1816	1826	1850	rBV	119178	238113	17.06%	2.556%
41	7.240	1917	1928	1952	rBV	547463	980745	70.27%	10.529%
42	7.555	2017	2026	2049	rBV	77336	149305	10.70%	1.603%
43	7.822	2107	2109	2112	rBV	377	183	0.01%	0.002%
44	7.876	2117	2126	2136	rVV2	5238	8492	0.61%	0.091%
45	7.947	2144	2148	2150	rBV	383	316	0.02%	0.003%
46	7.986	2158	2160	2163	rVB2	241	130	0.01%	0.001%
47	8.005	2163	2166	2167	rBV	335	151	0.01%	0.002%
48	8.034	2167	2175	2208	rBV2	73436	178160	12.76%	1.913%
49	8.445	2301	2303	2306	rBV3	273	169	0.01%	0.002%
50	8.516	2323	2325	2329	rBV4	509	370	0.03%	0.004%
51	8.670	2369	2373	2374	rBV	237	175	0.01%	0.002%
52	8.735	2389	2393	2394	rBV2	451	245	0.02%	0.003%
53	8.783	2397	2408	2442	rBV	660510	1110617	79.57%	11.923%
54	9.262	2555	2557	2559	rBV2	445	281	0.02%	0.003%
55	9.294	2565	2567	2570	rVB2	522	273	0.02%	0.003%
56	9.326	2573	2577	2581	rBV3	382	241	0.02%	0.003%
57	9.368	2588	2590	2593	rVB2	356	191	0.01%	0.002%
58	9.407	2600	2602	2606	rVB	343	141	0.01%	0.002%
59	9.468	2619	2621	2624	rBV	318	227	0.02%	0.002%
60	9.551	2644	2647	2651	rVB3	601	308	0.02%	0.003%
61	9.567	2651	2652	2656	rBV	359	195	0.01%	0.002%
62	9.587	2656	2658	2659	rBV	415	192	0.01%	0.002%
63	9.629	2667	2671	2673	rBV	201	120	0.01%	0.001%
64	9.641	2673	2675	2677	rVB2	296	138	0.01%	0.001%
65	9.654	2677	2679	2680	rBV2	290	133	0.01%	0.001%
66	9.764	2710	2713	2716	rBV2	385	211	0.02%	0.002%
67	9.793	2718	2722	2724	rVB2	309	216	0.02%	0.002%
68	9.841	2727	2737	2747	rBV7	3299	5729	0.41%	0.062%
69	9.928	2763	2764	2768	rBV2	235	106	0.01%	0.001%
70	9.976	2777	2779	2781	rVB3	341	128	0.01%	0.001%
71	10.149	2823	2833	2858	rBV	188480	307483	22.03%	3.301%
72	10.323	2877	2887	2898	rVB	24778	40257	2.88%	0.432%
73	10.484	2932	2937	2939	rBV3	472	454	0.03%	0.005%
74	10.542	2953	2955	2957	rBV	343	128	0.01%	0.001%
75	10.558	2958	2960	2963	rVB	297	188	0.01%	0.002%
76	10.574	2963	2965	2971	rVB2	303	192	0.01%	0.002%

Data Path : Z:\voasrv\HPCHEM1\MSVOA_V\Data\VV070324\
 Data File : VV036437.D
 Acq On : 03 Jul 2024 12:38
 Operator : SY/MD
 Sample : P3100-19
 Misc : 5.05g/10.0mL/MSVOA_V/SOIL/A
 ALS Vial : 12 Sample Multiplier: 1

Instrument :
 MSVOA_V
 ClientSampleId :
 A4D32

Integration Parameters: LSCINT.P

Integrator: RTE
 Smoothing : OFF Filtering: 5
 Sampling : 1 Min Area: 0 % of largest Peak
 Start Thrs: 0.2 Max Peaks: 100
 Stop Thrs : 0 Peak Location: TOP

If leading or trailing edge < 100 prefer < Baseline drop else tangent >
 Peak separation: 5

Method : Z:\voasrv\HPCHEM1\MSVOA_V\Method\SFAMVLM062724SMA.M
 Title : VOC Analysis

77	10.606	2971	2975	2978	rBV	401	313	0.02%	0.003%
78	10.622	2978	2980	2983	rVB	272	102	0.01%	0.001%
79	10.677	2993	2997	2998	rBV	226	135	0.01%	0.001%
80	10.725	3010	3012	3016	rVB	468	212	0.02%	0.002%
81	10.767	3023	3025	3031	rVB4	674	563	0.04%	0.006%
82	10.831	3041	3045	3047	rBV2	653	530	0.04%	0.006%
83	10.940	3077	3079	3081	rBV2	515	294	0.02%	0.003%
84	11.014	3098	3102	3104	rBV3	413	276	0.02%	0.003%
85	11.127	3131	3137	3144	rBV9	3829	5406	0.39%	0.058%
86	11.182	3144	3154	3175	rBV	407353	656951	47.07%	7.053%
87	11.500	3245	3253	3260	rBV6	6199	12330	0.88%	0.132%
88	11.558	3262	3271	3297	rVB	309466	503717	36.09%	5.408%
89	12.194	3462	3469	3478	rVB3	8094	11889	0.85%	0.128%
90	12.268	3490	3492	3493	rBV2	587	260	0.02%	0.003%
91	12.828	3659	3666	3672	rBV7	2274	3056	0.22%	0.033%
92	13.082	3742	3745	3747	rBV	688	356	0.03%	0.004%
93	13.149	3764	3766	3768	rBV	447	272	0.02%	0.003%
94	13.243	3793	3795	3796	rBV	349	115	0.01%	0.001%
95	13.307	3813	3815	3819	rBV2	332	239	0.02%	0.003%
96	13.744	3948	3951	3952	rBV	403	205	0.01%	0.002%
97	13.882	3990	3994	4000	rVB2	482	553	0.04%	0.006%
98	13.960	4015	4018	4019	rBV3	549	306	0.02%	0.003%
99	14.181	4085	4087	4089	rVB2	459	163	0.01%	0.002%
100	15.368	4453	4456	4458	rBV3	931	588	0.04%	0.006%

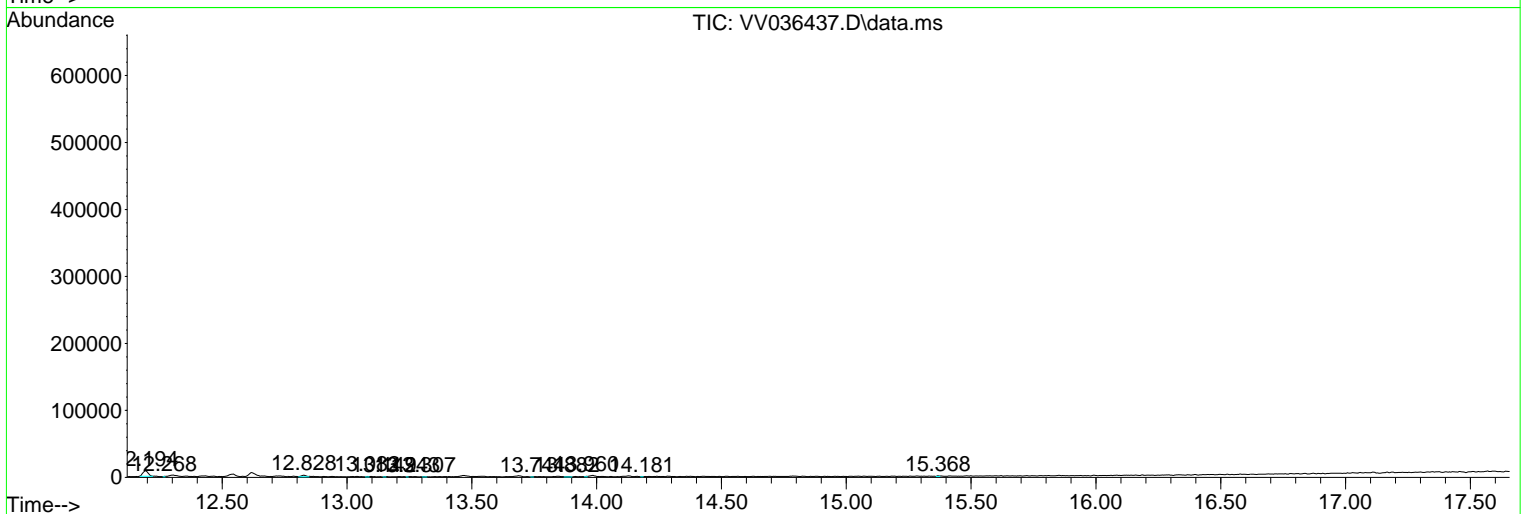
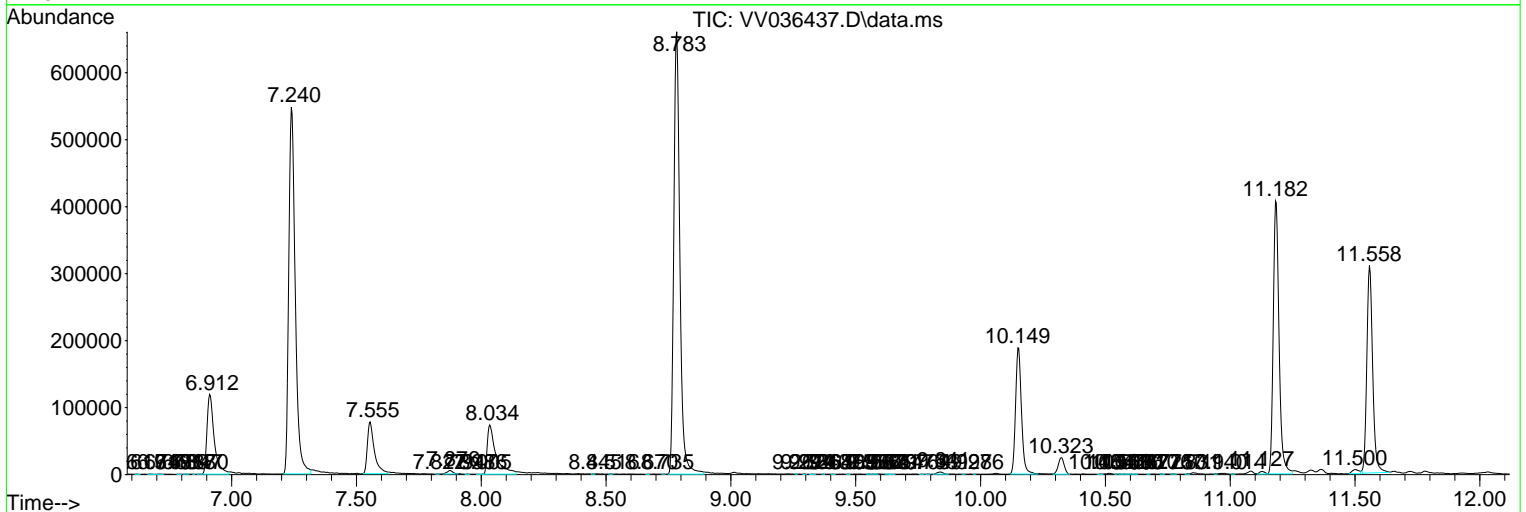
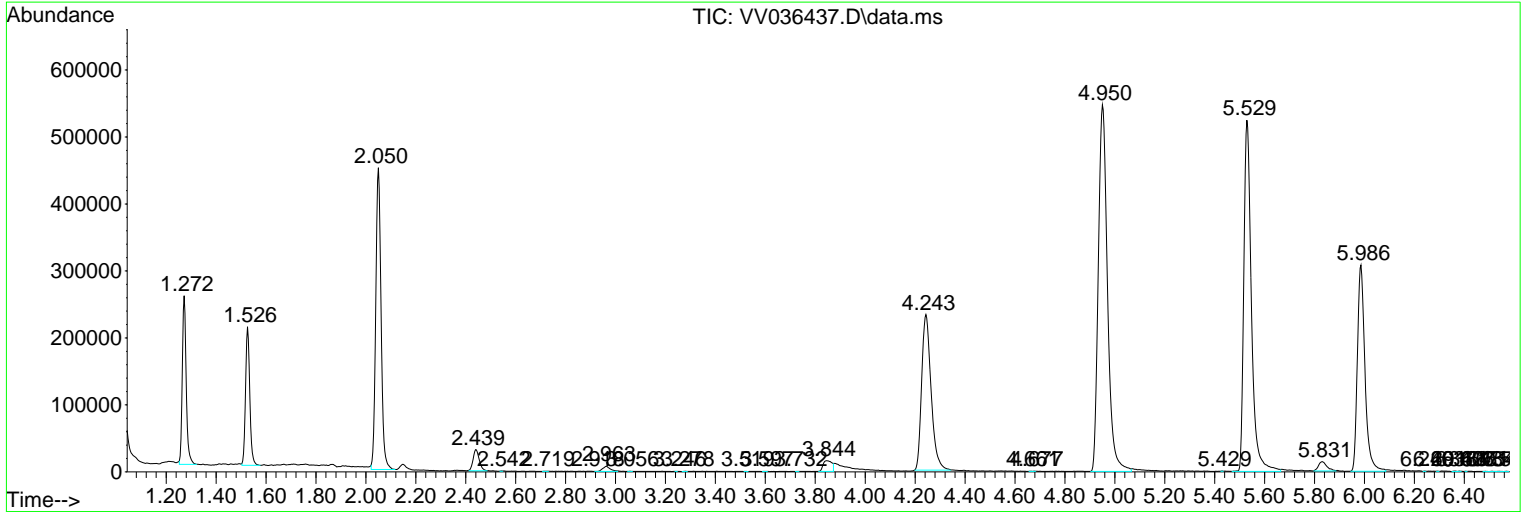
Sum of corrected areas: 9314572

Data Path : Z:\voasrv\HPCHEM1\MSVOA_V\Data\VV070324\
 Data File : VV036437.D
 Acq On : 03 Jul 2024 12:38
 Operator : SY/MD
 Sample : P3100-19
 Misc : 5.05g/10.0mL/MSVOA_V/SOIL/A
 ALS Vial : 12 Sample Multiplier: 1

Instrument :
 MSVOA_V
 ClientSampleId :
 A4D32

Quant Method : Z:\voasrv\HPCHEM1\MSVOA_V\Method\SFAMVLM062724SMA.M
 Quant Title : VOC Analysis

TIC Library : C:\Database\NIST20.L
 TIC Integration Parameters: LSCINT.P



Library Search Compound Report

Data Path : Z:\voasrv\HPCHEM1\MSVOA_V\Data\VV070324\
Data File : VV036437.D
Acq On : 03 Jul 2024 12:38
Operator : SY/MD
Sample : P3100-19
Misc : 5.05g/10.0mL/MSVOA_V/SOIL/A
ALS Vial : 12 Sample Multiplier: 1

Instrument :
MSVOA_V
ClientSampleId :
A4D32

Quant Method : Z:\voasrv\HPCHEM1\MSVOA_V\Method\SFAMVLM062724SMA.M
Quant Title : VOC Analysis

TIC Library : C:\Database\NIST20.L
TIC Integration Parameters: LSCINT.P

No Library Search Compounds Detected

Data Path : Z:\voasrv\HPCHEM1\MSVOA_V\Data\VV070324\
Data File : VV036437.D
Acq On : 03 Jul 2024 12:38
Operator : SY/MD
Sample : P3100-19
Misc : 5.05g/10.0mL/MSVOA_V/SOIL/A
ALS Vial : 12 Sample Multiplier: 1

Instrument :
MSVOA_V
ClientSampleId :
A4D32

Quant Method : Z:\voasrv\HPCHEM1\MSVOA_V\Method\SFAMVLM062724SMA.M
Quant Title : VOC Analysis

TIC Library : C:\Database\NIST0.L
TIC Integration Parameters: LSCINT.P

TIC Top Hit name	RT	EstConc	Units	Response	--Internal Standard--			
					#	RT	Resp	Conc
