

Data Path : Z:\voasrv\HPCHEM1\MSVOA_V\Data\VW070824\
 Data File : VW036464.D
 Acq On : 08 Jul 2024 10:59
 Operator : SY/MD
 Sample : VSTDCCC025
 Misc : 5.00g/10.0mL/MSVOA_V/SOIL
 ALS Vial : 2 Sample Multiplier: 1

Instrument :
 MSVOA_V
 ClientSampleId :

Quant Time: Jul 09 00:46:18 2024
 Quant Method : Z:\voasrv\HPCHEM1\MSVOA_V\Method\SFAMVLM062724SMA.M
 Quant Title : VOC Analysis
 QLast Update : Sat Jul 06 01:35:25 2024
 Response via : Initial Calibration

Compound	R.T.	QIon	Response	Conc	Units	Dev(Min)
Internal Standards						
1) 1,4-Difluorobenzene	5.529	114	277722	25.000	ug/L	0.00
28) Chlorobenzene-d5	8.780	117	295695	25.000	ug/L	0.00
58) 1,4-Dichlorobenzene-d4	11.181	152	179292	25.000	ug/L	0.00
System Monitoring Compounds						
4) Vinyl Chloride-d3	1.272	65	135904	28.814	ug/L	0.00
Spiked Amount	25.000	Range 30 - 150	Recovery	=	115.240%	
7) Chloroethane-d5	1.526	69	109530	29.074	ug/L	0.00
Spiked Amount	25.000	Range 30 - 150	Recovery	=	116.280%	
11) 1,1-Dichloroethene-d2	2.050	65	62904	28.370	ug/L	0.00
Spiked Amount	25.000	Range 45 - 110	Recovery	=	113.480%#	
21) 2-Butanone-d5	3.834	46	20247	18.496	ug/L	0.00
Spiked Amount	50.000	Range 20 - 135	Recovery	=	37.000%	
24) Chloroform-d	4.240	84	239324	29.194	ug/L	0.00
Spiked Amount	25.000	Range 40 - 150	Recovery	=	116.760%	
26) 1,2-Dichloroethane-d4	4.934	65	122360	27.989	ug/L	0.00
Spiked Amount	25.000	Range 70 - 130	Recovery	=	111.960%	
32) Benzene-d6	4.950	84	454082	27.204	ug/L	0.00
Spiked Amount	25.000	Range 20 - 135	Recovery	=	108.800%	
36) 1,2-Dichloropropane-d6	5.982	67	132867	26.463	ug/L	0.00
Spiked Amount	25.000	Range 70 - 120	Recovery	=	105.840%	
41) Toluene-d8	7.236	98	431794	28.691	ug/L	0.00
Spiked Amount	25.000	Range 30 - 130	Recovery	=	114.760%	
43) trans-1,3-Dichloroprop...	7.551	79	58075	25.902	ug/L	0.00
Spiked Amount	25.000	Range 30 - 135	Recovery	=	103.600%	
47) 2-Hexanone-d5	8.027	63	31945	39.859	ug/L	0.00
Spiked Amount	50.000	Range 20 - 135	Recovery	=	79.720%	
56) 1,1,2,2-Tetrachloroeth...	10.149	84	100858	24.506	ug/L	0.00
Spiked Amount	25.000	Range 45 - 120	Recovery	=	98.040%	
66) 1,2-Dichlorobenzene-d4	11.558	152	161527	24.722	ug/L	0.00
Spiked Amount	25.000	Range 75 - 120	Recovery	=	98.880%	
Target Compounds						
2) Dichlorodifluoromethane	1.101	85	104084	19.725	ug/L	99
3) Chloromethane	1.211	50	85015	17.799	ug/L	97
5) Vinyl chloride	1.275	62	105294	19.091	ug/L	100
6) Bromomethane	1.481	94	81797	22.051	ug/L	99
8) Chloroethane	1.542	64	71911	21.155	ug/L	100
9) Trichlorofluoromethane	1.706	101	182190	23.129	ug/L	99
10) 1,1,2-Trichloro-1,2,2-...	2.060	101	122432	24.779	ug/L	96
12) 1,1-Dichloroethene	2.060	96	103956	23.764	ug/L	91
13) Acetone	2.384	43	36236	24.502	ug/L	100
14) Carbon disulfide	2.230	76	217733	15.776	ug/L	99
15) Methyl Acetate	2.384	43	41046	21.568	ug/L	91
16) Methylene chloride	2.439	84	123523	22.592	ug/L	94
17) trans-1,2-Dichloroethene	2.687	96	97770	22.510	ug/L	95
18) Methyl tert-butyl Ether	2.699	73	239671	23.705	ug/L	99
19) 1,1-Dichloroethane	3.105	63	186706	24.177	ug/L	99
20) cis-1,2-Dichloroethene	3.805	96	107710	24.656	ug/L	94
22) 2-Butanone	3.905	43	43331	34.748	ug/L	79
23) Bromochloromethane	4.140	128	59854	26.276	ug/L	90
25) Chloroform	4.269	83	218769	26.560	ug/L	100

Data Path : Z:\voasrv\HPCHEM1\MSVOA_V\Data\VV070824\
 Data File : VV036464.D
 Acq On : 08 Jul 2024 10:59
 Operator : SY/MD
 Sample : VSTDCCC025
 Misc : 5.00g/10.0mL/MSVOA_V/SOIL
 ALS Vial : 2 Sample Multiplier: 1

Instrument :
 MSVOA_V
 ClientSampleId :

Quant Time: Jul 09 00:46:18 2024
 Quant Method : Z:\voasrv\HPCHEM1\MSVOA_V\Method\SFAMVLM062724SMA.M
 Quant Title : VOC Analysis
 QLast Update : Sat Jul 06 01:35:25 2024
 Response via : Initial Calibration

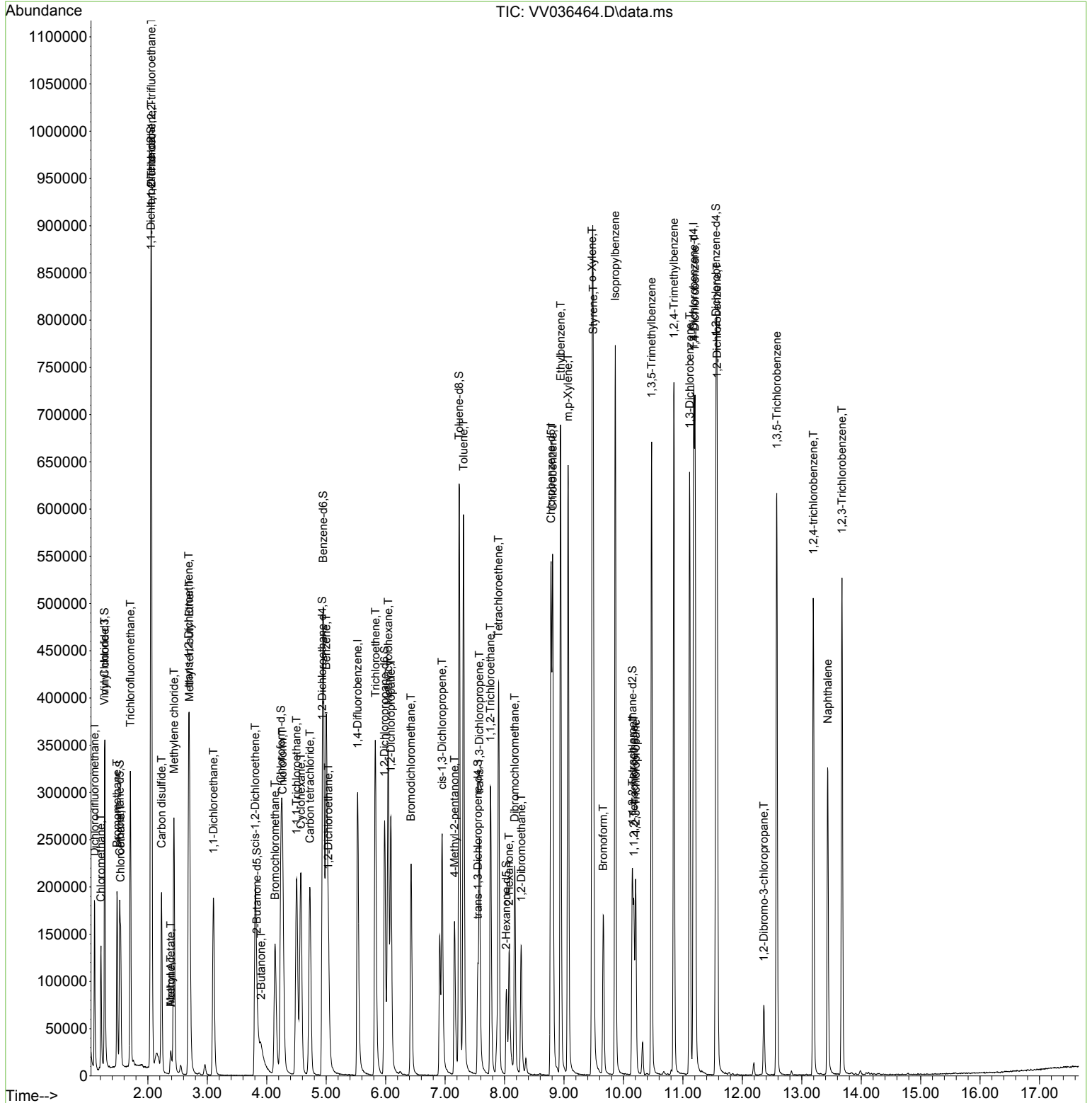
Compound	R.T.	QIon	Response	Conc	Units	Dev(Min)
27) 1,2-Dichloroethane	5.037	62	129933	24.362	ug/L	97
29) Cyclohexane	4.574	56	104442	16.579	ug/L	95
30) 1,1,1-Trichloroethane	4.503	97	179584	24.494	ug/L	98
31) Carbon tetrachloride	4.725	117	156179	23.907	ug/L	99
33) Benzene	5.002	78	405006	23.125	ug/L	100
34) Trichloroethene	5.828	95	126552	22.898	ug/L	95
35) Methylcyclohexane	6.043	83	144117	18.711	ug/L	97
37) 1,2-Dichloropropane	6.088	63	106953	23.911	ug/L #	97
38) Bromodichloromethane	6.426	83	155019	25.340	ug/L	100
39) cis-1,3-Dichloropropene	6.950	75	164115	23.861	ug/L	99
40) 4-Methyl-2-pentanone	7.159	43	103672	41.097	ug/L	99
42) Toluene	7.310	91	449864	24.566	ug/L	99
44) trans-1,3-Dichloropropene	7.577	75	148906	24.070	ug/L	99
45) 1,1,2-Trichloroethane	7.764	97	99141	25.077	ug/L	98
46) Tetrachloroethene	7.899	164	97506	24.276	ug/L	97
48) 2-Hexanone	8.079	43	78786	39.706	ug/L	97
49) Dibromochloromethane	8.172	129	115714	26.255	ug/L	100
50) 1,2-Dibromoethane	8.281	107	95174	24.436	ug/L	100
51) Chlorobenzene	8.809	112	309439	24.719	ug/L	97
52) Ethylbenzene	8.944	91	470195	23.792	ug/L	99
53) m,p-Xylene	9.069	106	185918	25.242	ug/L	98
54) o-Xylene	9.474	106	176628	25.501	ug/L	95
55) Styrene	9.493	104	331240	27.287	ug/L	98
57) 1,1,2,2-Tetrachloroethane	10.175	83	85368	24.126	ug/L	99
59) Bromoform	9.661	173	77501	22.835	ug/L	99
60) Isopropylbenzene	9.863	105	480017	22.148	ug/L	99
61) 1,2,3-Trichloropropane	10.207	75	80559	19.910	ug/L	97
62) 1,3,5-Trimethylbenzene	10.474	105	341869	22.041	ug/L	99
63) 1,2,4-Trimethylbenzene	10.850	105	383711	22.766	ug/L	98
64) 1,3-Dichlorobenzene	11.114	146	269351	23.850	ug/L	99
65) 1,4-Dichlorobenzene	11.204	146	281520	23.255	ug/L	97
67) 1,2-Dichlorobenzene	11.577	146	256801	23.819	ug/L	98
68) 1,2-Dibromo-3-chloropr...	12.361	75	18415	20.286	ug/L	91
69) 1,3,5-Trichlorobenzene	12.580	180	199887	23.506	ug/L	99
70) 1,2,4-trichlorobenzene	13.194	180	161863	23.869	ug/L	100
71) Naphthalene	13.435	128	266662	22.055	ug/L	99
72) 1,2,3-Trichlorobenzene	13.676	180	160015	25.094	ug/L	99

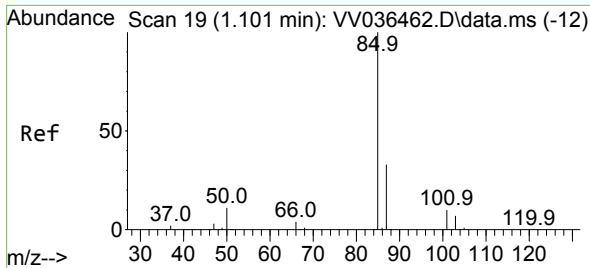
(#) = qualifier out of range (m) = manual integration (+) = signals summed

Data Path : Z:\voasrv\HPCHEM1\MSVOA_V\Data\VV070824\
 Data File : VV036464.D
 Acq On : 08 Jul 2024 10:59
 Operator : SY/MD
 Sample : VSTDCCC025
 Misc : 5.00g/10.0mL/MSVOA_V/SOIL
 ALS Vial : 2 Sample Multiplier: 1

Instrument :
 MSVOA_V
 ClientSampleId :

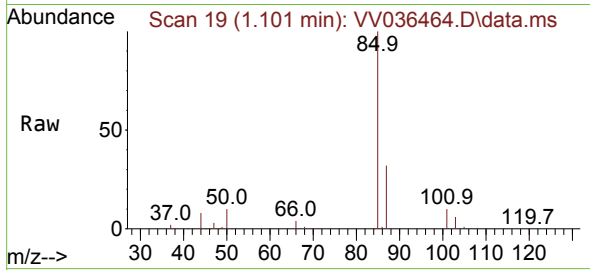
Quant Time: Jul 09 00:46:18 2024
 Quant Method : Z:\voasrv\HPCHEM1\MSVOA_V\Method\SFAMVLM062724SMA.M
 Quant Title : VOC Analysis
 QLast Update : Sat Jul 06 01:35:25 2024
 Response via : Initial Calibration



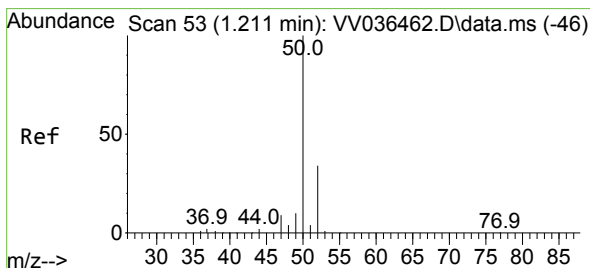
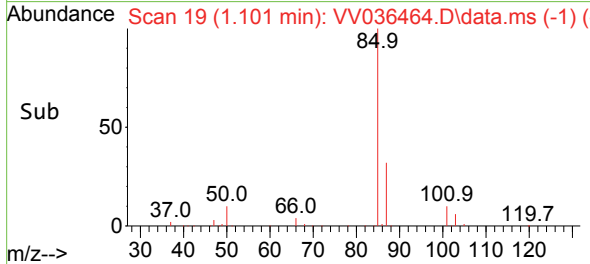
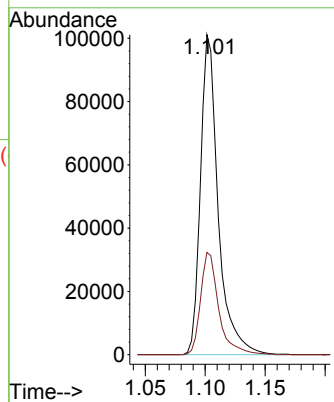


#2
 Dichlorodifluoromethane
 Concen: 19.725 ug/L
 RT: 1.101 min Scan# 19
 Delta R.T. -0.003 min
 Lab File: VV036464.D
 Acq: 08 Jul 2024 10:59

Instrument :
 MSVOA_V
 ClientSampleId :

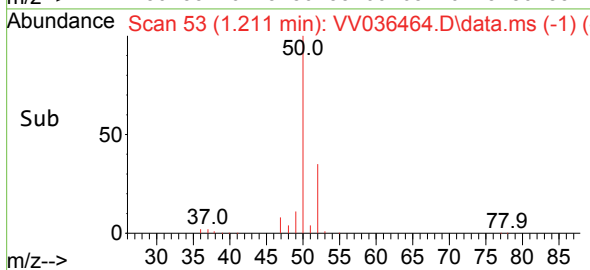
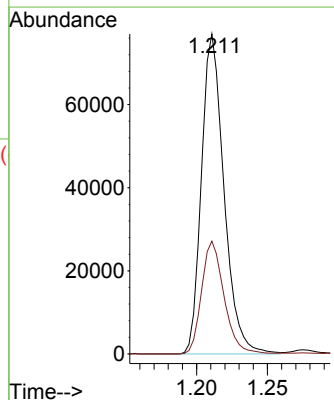
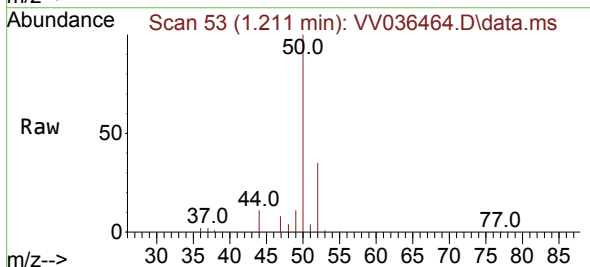


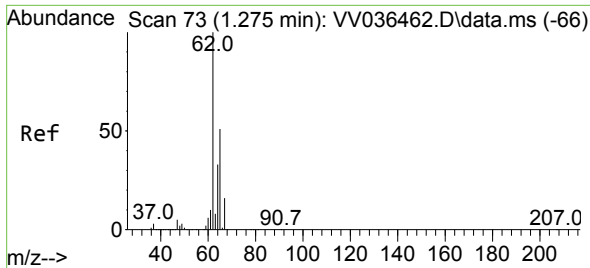
Tgt Ion: 85 Resp: 104084
 Ion Ratio Lower Upper
 85 100
 87 32.8 25.9 38.9



#3
 Chloromethane
 Concen: 17.799 ug/L
 RT: 1.211 min Scan# 53
 Delta R.T. 0.000 min
 Lab File: VV036464.D
 Acq: 08 Jul 2024 10:59

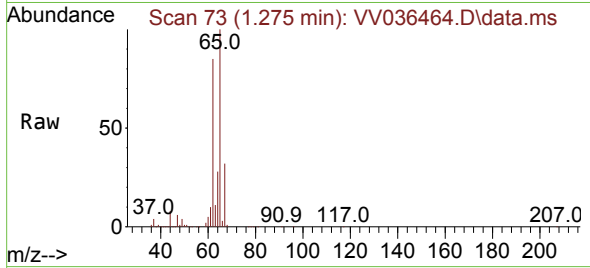
Tgt Ion: 50 Resp: 85015
 Ion Ratio Lower Upper
 50 100
 52 35.3 23.5 43.7



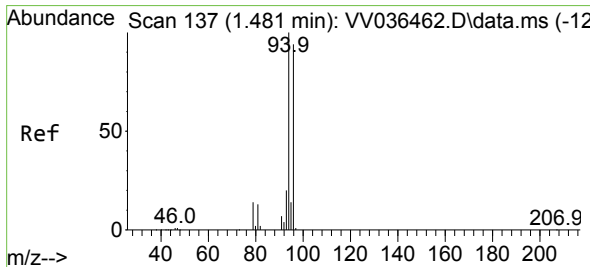
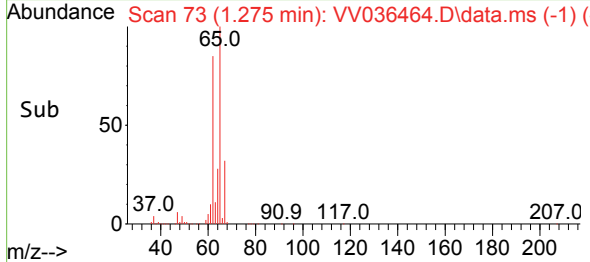
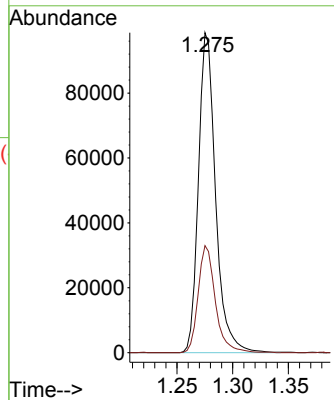


#5
 Vinyl chloride
 Concen: 19.091 ug/L
 RT: 1.275 min Scan# 71
 Delta R.T. -0.003 min
 Lab File: VV036464.D
 Acq: 08 Jul 2024 10:59

Instrument :
 MSVOA_V
 ClientSampleId :

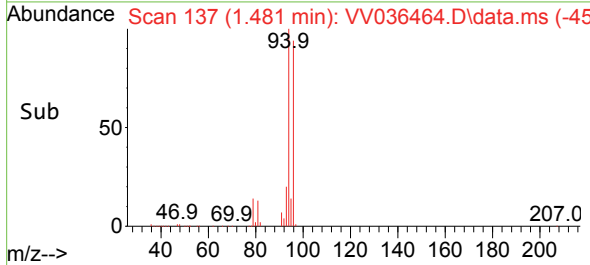
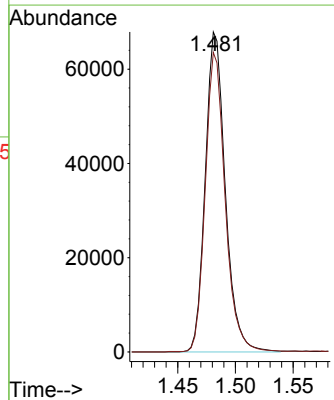
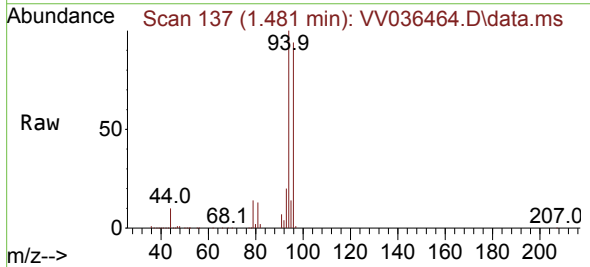


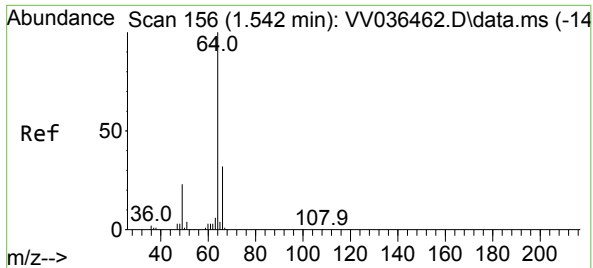
Tgt Ion: 62 Resp: 105294
 Ion Ratio Lower Upper
 62 100
 64 33.5 23.4 43.4



#6
 Bromomethane
 Concen: 22.051 ug/L
 RT: 1.481 min Scan# 137
 Delta R.T. -0.003 min
 Lab File: VV036464.D
 Acq: 08 Jul 2024 10:59

Tgt Ion: 94 Resp: 81797
 Ion Ratio Lower Upper
 94 100
 96 93.6 66.1 122.7

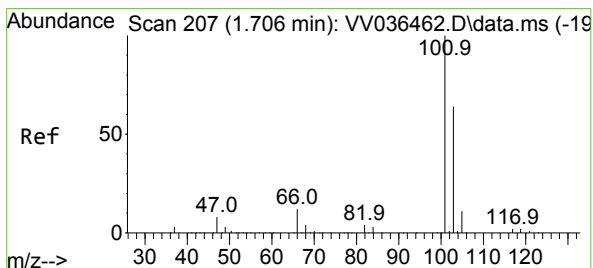
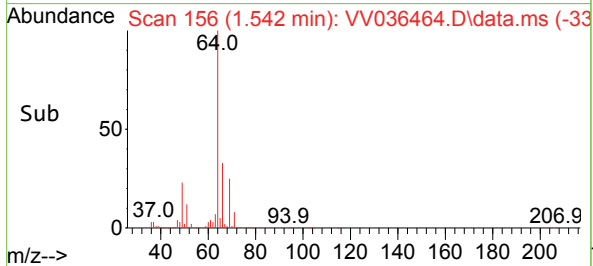
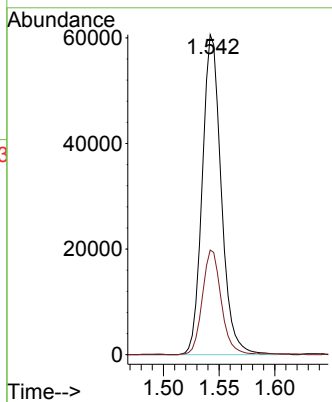
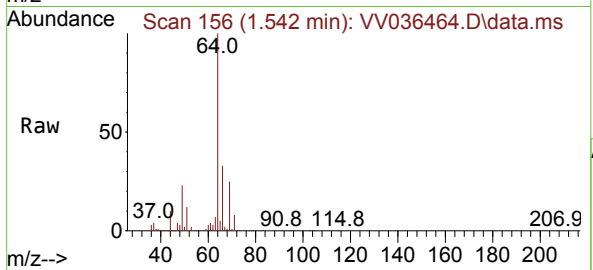




#8
 Chloroethane
 Concen: 21.155 ug/L
 RT: 1.542 min Scan# 156
 Delta R.T. -0.003 min
 Lab File: VV036464.D
 Acq: 08 Jul 2024 10:59

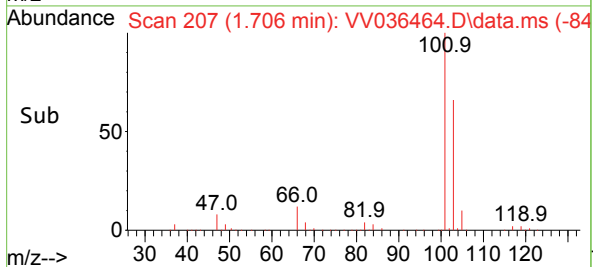
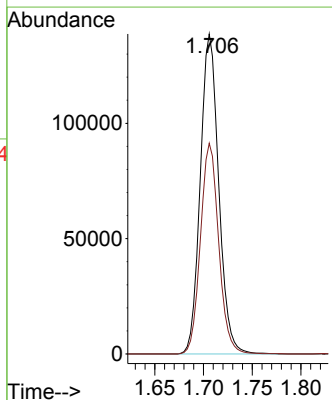
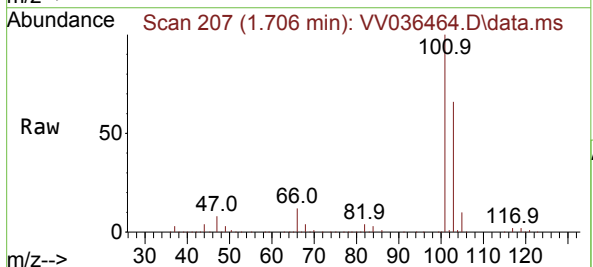
Instrument : MSVOA_V
 ClientSampleId :

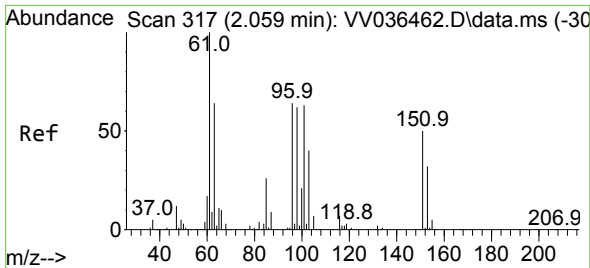
Tgt Ion: 64 Resp: 71911
 Ion Ratio Lower Upper
 64 100
 66 32.7 23.0 42.6



#9
 Trichlorofluoromethane
 Concen: 23.129 ug/L
 RT: 1.706 min Scan# 207
 Delta R.T. -0.003 min
 Lab File: VV036464.D
 Acq: 08 Jul 2024 10:59

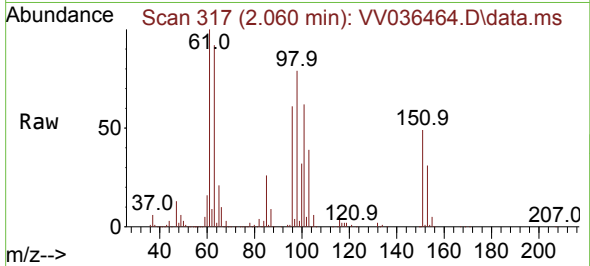
Tgt Ion: 101 Resp: 182190
 Ion Ratio Lower Upper
 101 100
 103 65.2 51.7 77.5



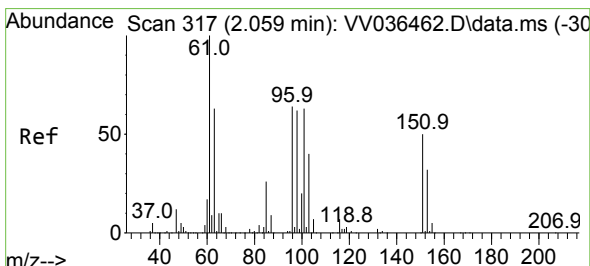
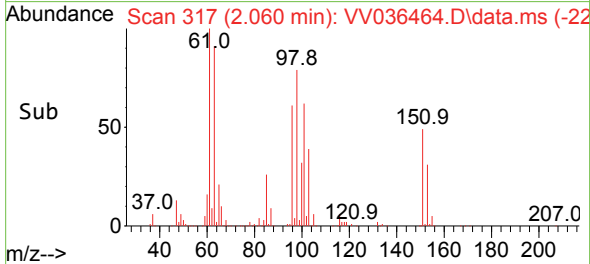
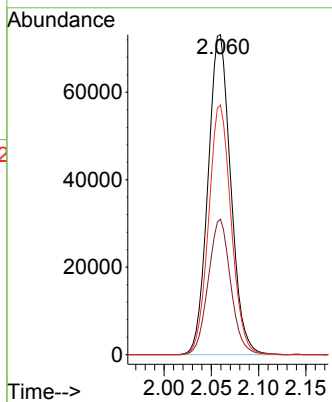


#10
 1,1,2-Trichloro-1,2,2-trifluoroethane
 Concen: 24.779 ug/L
 RT: 2.060 min Scan# 317
 Delta R.T. 0.000 min
 Lab File: VV036464.D
 Acq: 08 Jul 2024 10:59

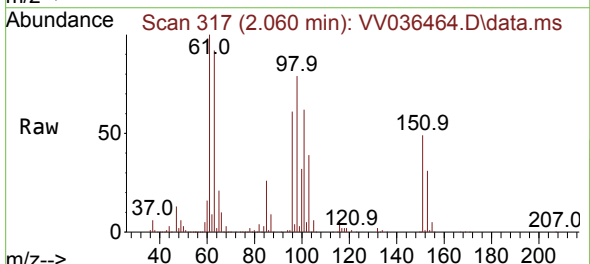
Instrument :
 MSVOA_V
 ClientSampleId :



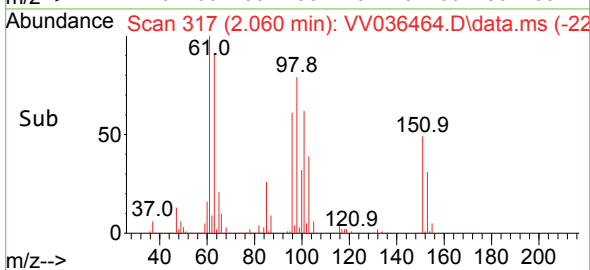
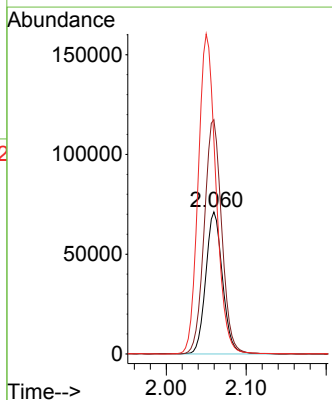
Tgt Ion: 101 Resp: 122432
 Ion Ratio Lower Upper
 101 100
 85 41.7 34.6 51.8
 151 77.4 58.9 88.3

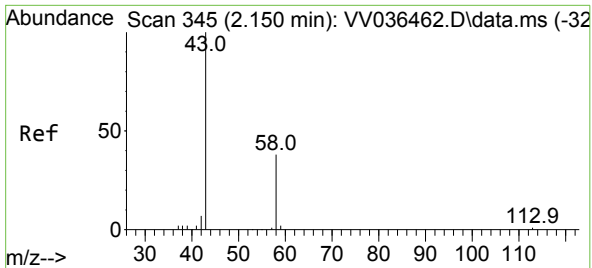


#12
 1,1-Dichloroethene
 Concen: 23.764 ug/L
 RT: 2.060 min Scan# 317
 Delta R.T. -0.003 min
 Lab File: VV036464.D
 Acq: 08 Jul 2024 10:59



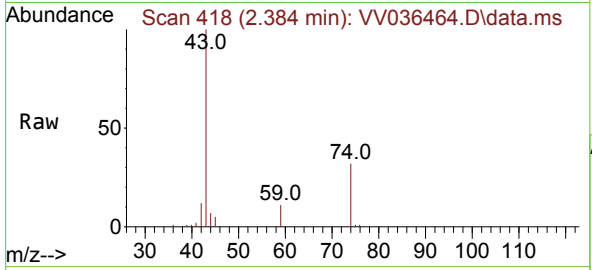
Tgt Ion: 96 Resp: 103956
 Ion Ratio Lower Upper
 96 100
 61 164.9 122.6 227.8
 63 150.9 96.1 178.5



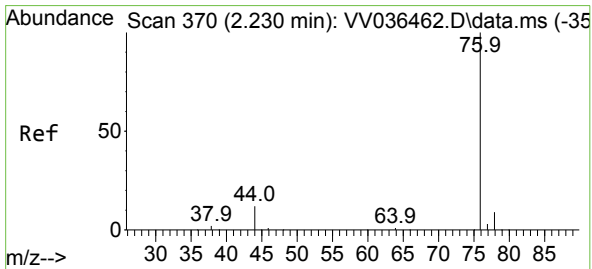
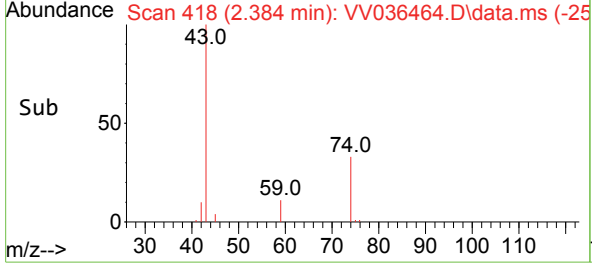
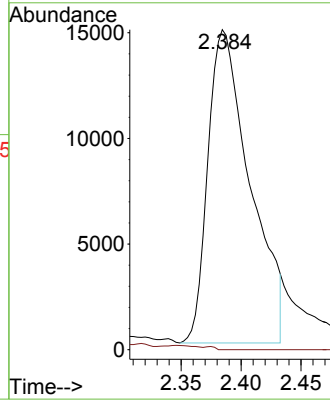


#13
 Acetone
 Concen: 24.502 ug/L
 RT: 2.384 min Scan# 411
 Delta R.T. 0.238 min
 Lab File: VV036464.D
 Acq: 08 Jul 2024 10:59

Instrument :
 MSVOA_V
 ClientSampleId :

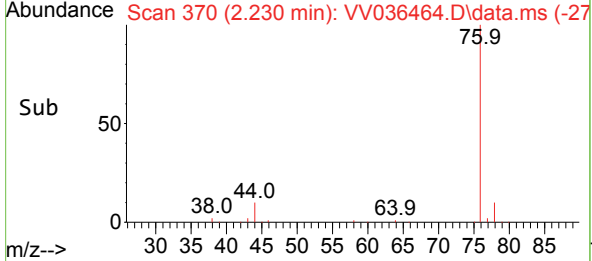
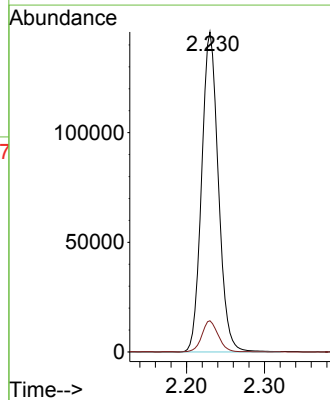
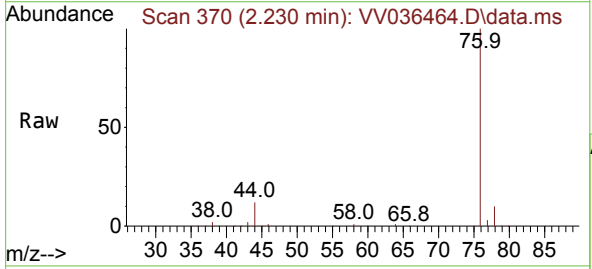


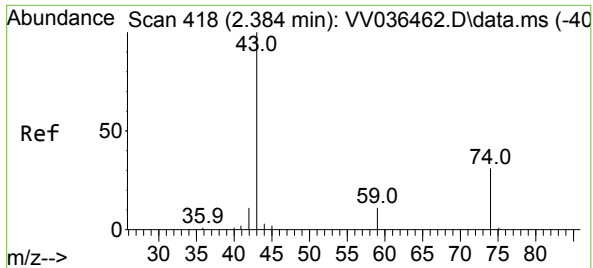
Tgt Ion: 43 Resp: 36236
 Ion Ratio Lower Upper
 43 100
 58 0.2 0.0 0.6



#14
 Carbon disulfide
 Concen: 15.776 ug/L
 RT: 2.230 min Scan# 370
 Delta R.T. -0.003 min
 Lab File: VV036464.D
 Acq: 08 Jul 2024 10:59

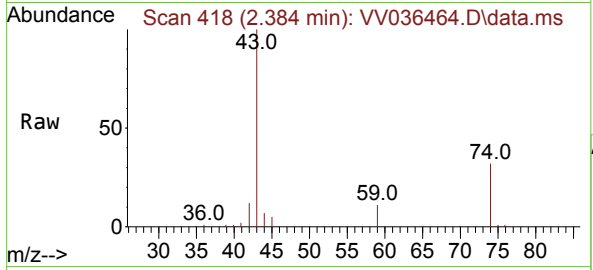
Tgt Ion: 76 Resp: 217733
 Ion Ratio Lower Upper
 76 100
 78 9.8 7.4 11.2



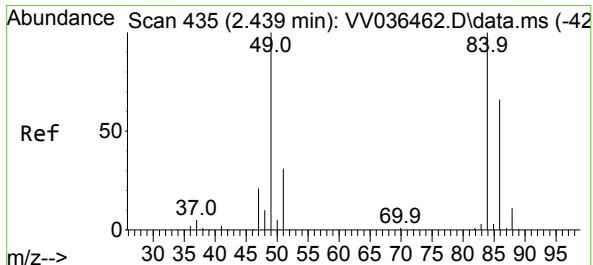
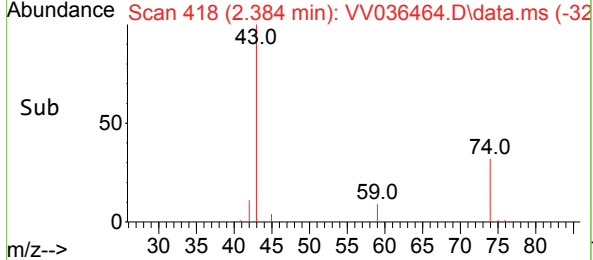
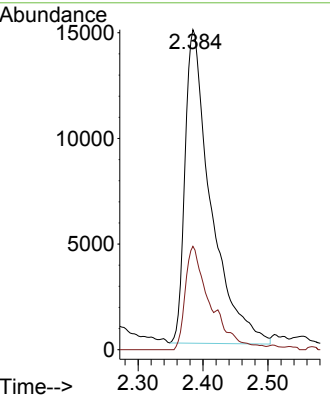


#15
 Methyl Acetate
 Concen: 21.568 ug/L
 RT: 2.384 min Scan# 415
 Delta R.T. 0.000 min
 Lab File: VV036464.D
 Acq: 08 Jul 2024 10:59

Instrument : MSVOA_V
 ClientSampleId :

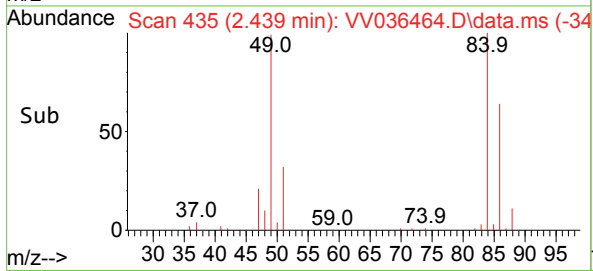
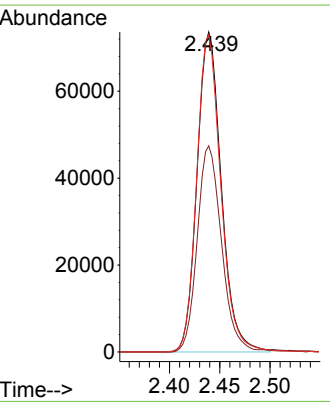
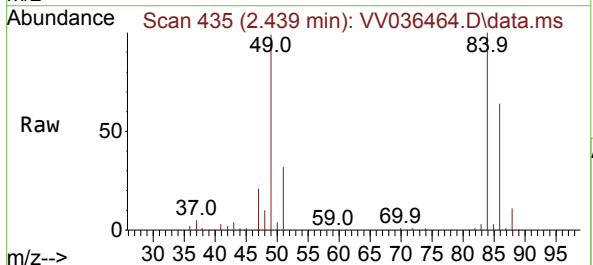


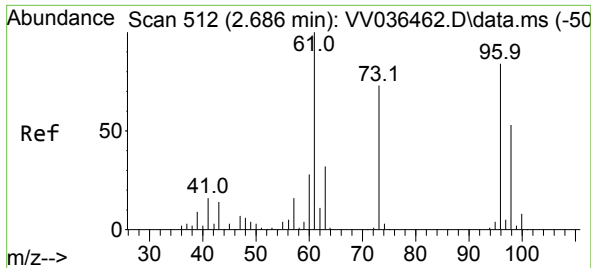
Tgt Ion: 43 Resp: 41046
 Ion Ratio Lower Upper
 43 100
 74 25.0 23.8 35.6



#16
 Methylene chloride
 Concen: 22.592 ug/L
 RT: 2.439 min Scan# 435
 Delta R.T. -0.003 min
 Lab File: VV036464.D
 Acq: 08 Jul 2024 10:59

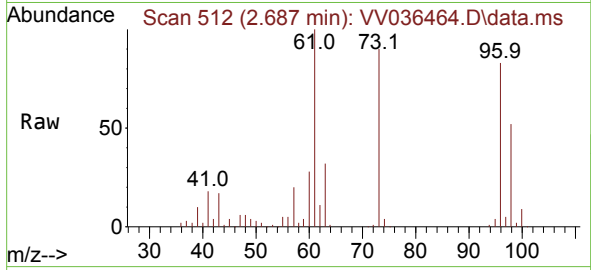
Tgt Ion: 84 Resp: 123523
 Ion Ratio Lower Upper
 84 100
 86 64.4 45.6 84.8
 49 99.1 75.7 140.5





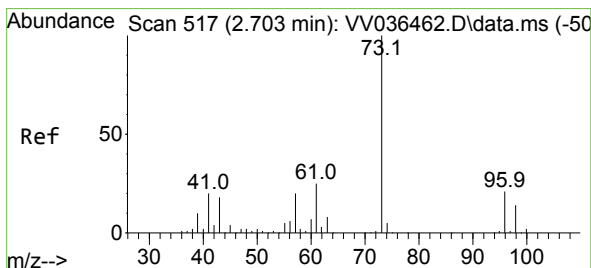
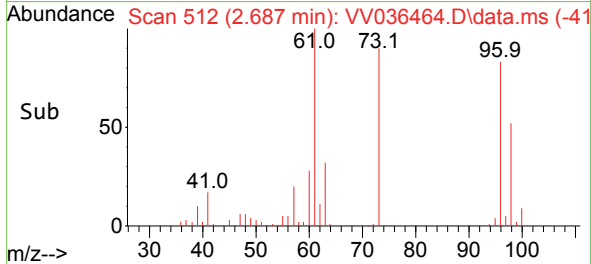
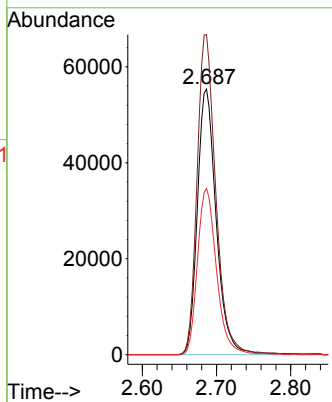
#17
 trans-1,2-Dichloroethene
 Concen: 22.510 ug/L
 RT: 2.687 min Scan# 512
 Delta R.T. 0.000 min
 Lab File: VV036464.D
 Acq: 08 Jul 2024 10:59

Instrument : MSVOA_V
 ClientSampleId :

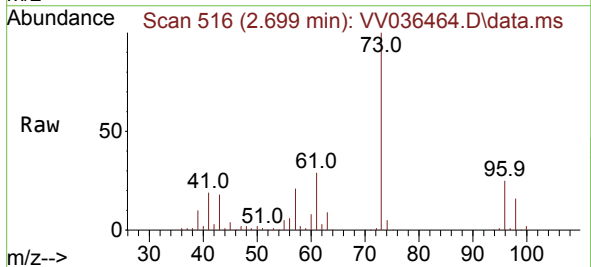


Tgt Ion: 96 Resp: 97770

Ion	Ratio	Lower	Upper
96	100		
61	120.5	89.8	166.8
98	62.6	45.3	84.1

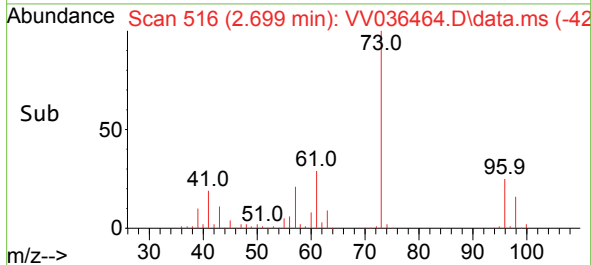
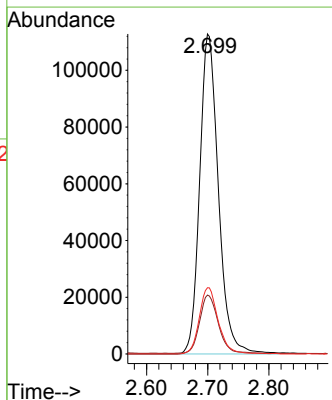


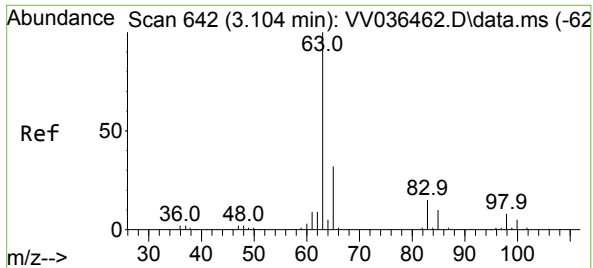
#18
 Methyl tert-butyl Ether
 Concen: 23.705 ug/L
 RT: 2.699 min Scan# 516
 Delta R.T. -0.003 min
 Lab File: VV036464.D
 Acq: 08 Jul 2024 10:59



Tgt Ion: 73 Resp: 239671

Ion	Ratio	Lower	Upper
73	100		
43	18.3	14.7	22.1
57	20.8	17.0	25.6



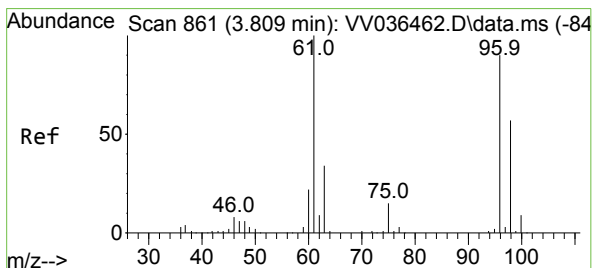
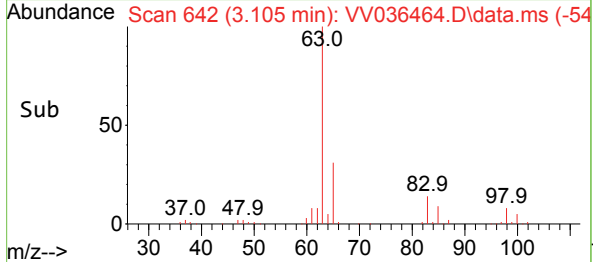
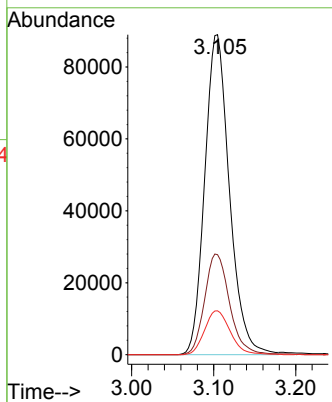
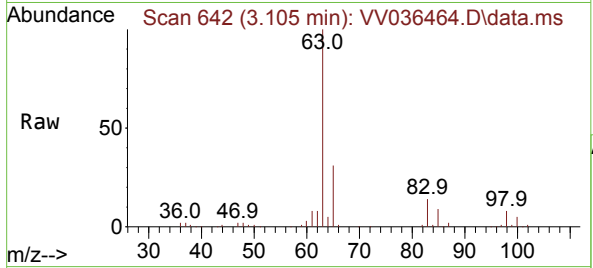


#19
 1,1-Dichloroethane
 Concen: 24.177 ug/L
 RT: 3.105 min Scan# 64
 Delta R.T. 0.000 min
 Lab File: VV036464.D
 Acq: 08 Jul 2024 10:59

Instrument :
 MSVOA_V
 ClientSampleId :

Tgt Ion: 63 Resp: 186706

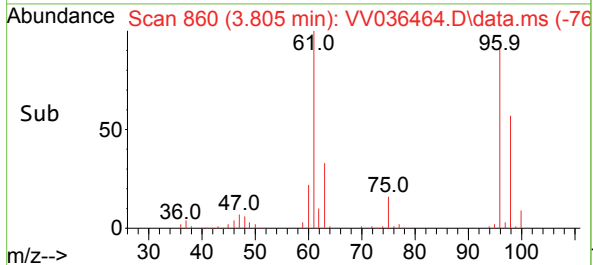
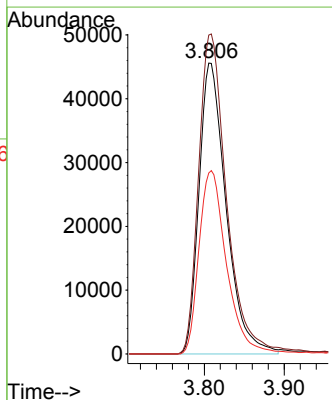
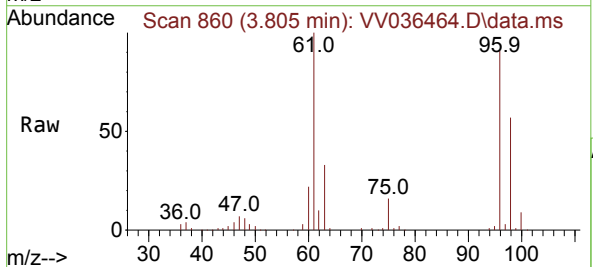
Ion	Ratio	Lower	Upper
63	100		
65	31.3	22.1	41.1
83	13.7	9.7	17.9

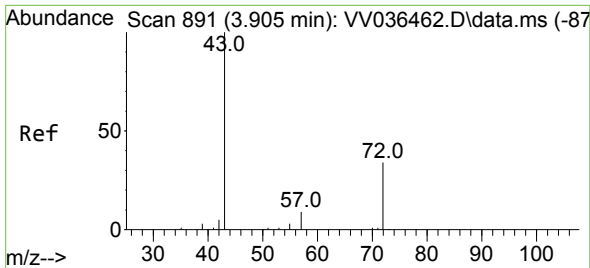


#20
 cis-1,2-Dichloroethene
 Concen: 24.656 ug/L
 RT: 3.805 min Scan# 860
 Delta R.T. -0.003 min
 Lab File: VV036464.D
 Acq: 08 Jul 2024 10:59

Tgt Ion: 96 Resp: 107710

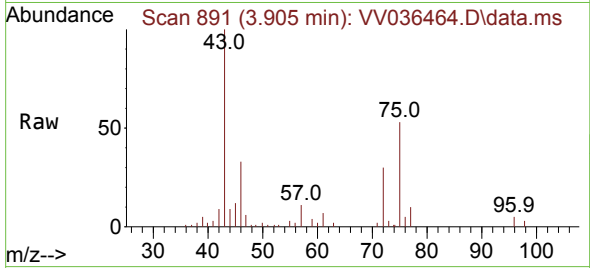
Ion	Ratio	Lower	Upper
96	100		
61	109.6	83.7	155.5
98	62.2	44.2	82.0



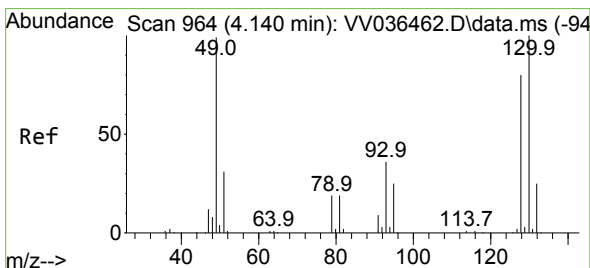
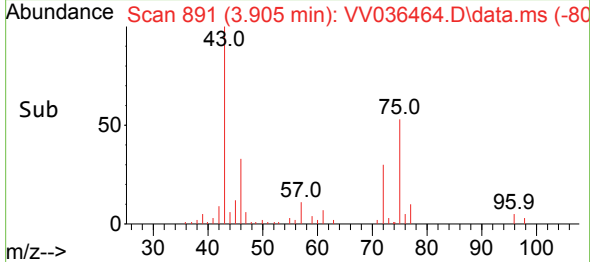
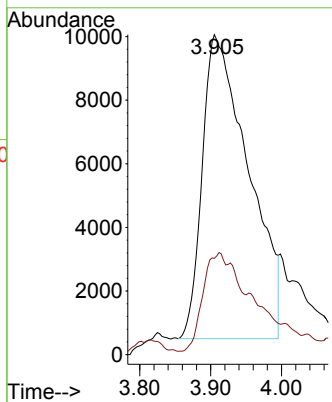


#22
 2-Butanone
 Concen: 34.748 ug/L
 RT: 3.905 min Scan# 891
 Delta R.T. -0.006 min
 Lab File: VV036464.D
 Acq: 08 Jul 2024 10:59

Instrument :
 MSVOA_V
 ClientSampleId :

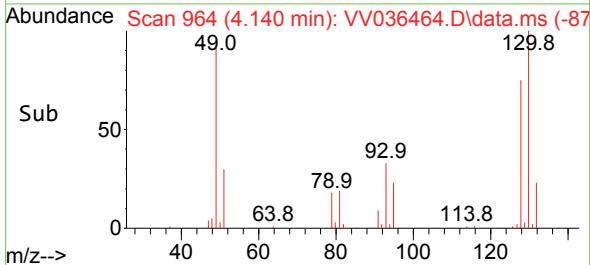
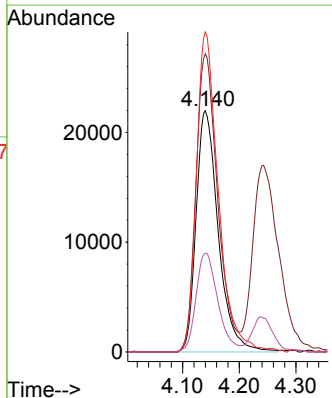
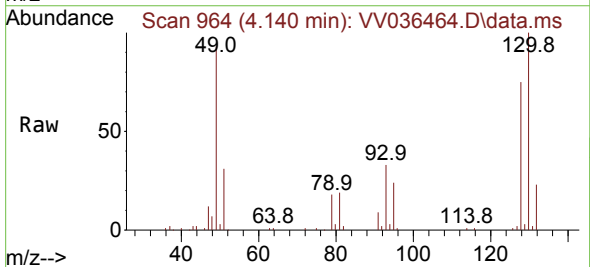


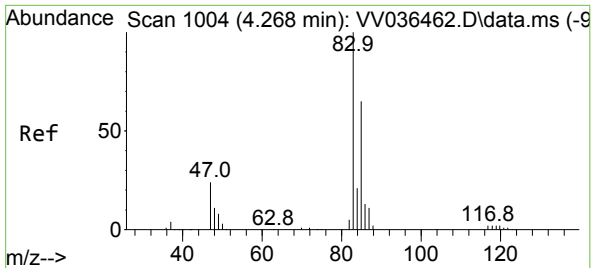
Tgt Ion: 43 Resp: 43331
 Ion Ratio Lower Upper
 43 100
 72 15.3 12.9 38.7



#23
 Bromochloromethane
 Concen: 26.276 ug/L
 RT: 4.140 min Scan# 964
 Delta R.T. 0.000 min
 Lab File: VV036464.D
 Acq: 08 Jul 2024 10:59

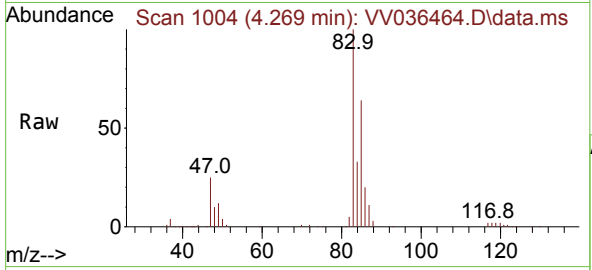
Tgt Ion: 128 Resp: 59854
 Ion Ratio Lower Upper
 128 100
 49 123.6 99.2 184.2
 130 132.6 88.9 165.1
 51 40.9 38.8 58.2



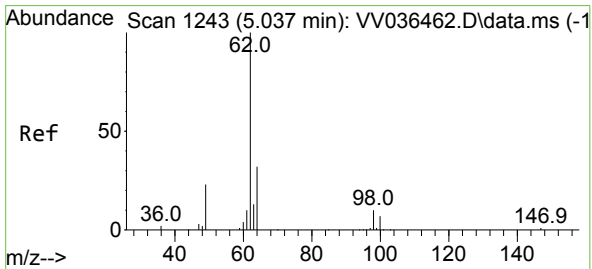
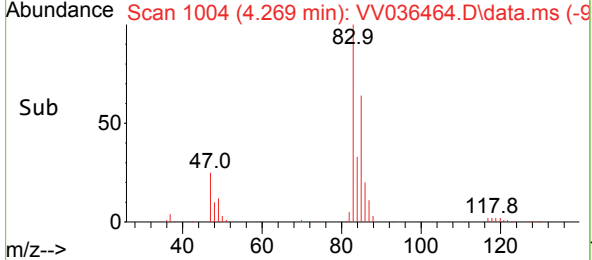
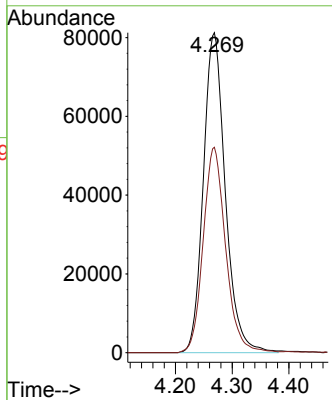


#25
 Chloroform
 Concen: 26.560 ug/L
 RT: 4.269 min Scan# 1004
 Delta R.T. 0.000 min
 Lab File: VV036464.D
 Acq: 08 Jul 2024 10:59

Instrument : MSVOA_V
 ClientSampleId :

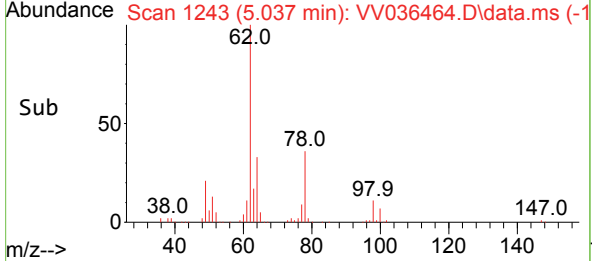
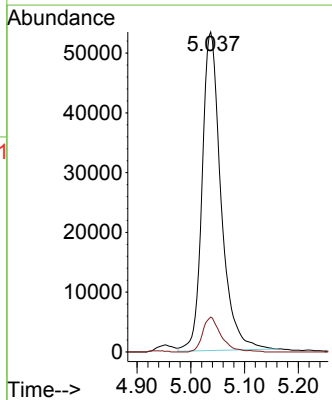
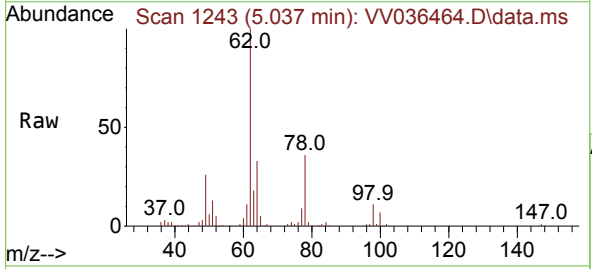


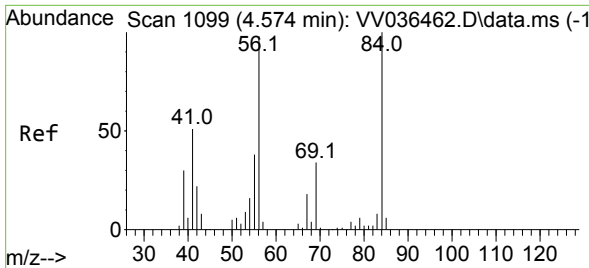
Tgt Ion: 83 Resp: 218769
 Ion Ratio Lower Upper
 83 100
 85 64.2 45.0 83.6



#27
 1,2-Dichloroethane
 Concen: 24.362 ug/L
 RT: 5.037 min Scan# 1243
 Delta R.T. 0.000 min
 Lab File: VV036464.D
 Acq: 08 Jul 2024 10:59

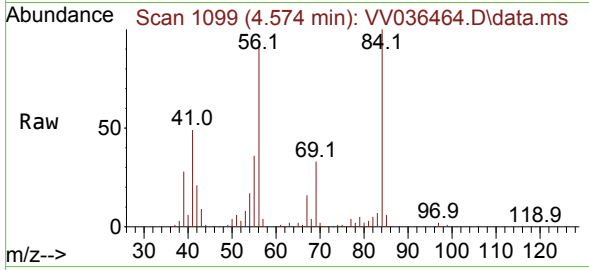
Tgt Ion: 62 Resp: 129933
 Ion Ratio Lower Upper
 62 100
 98 10.9 7.8 11.8





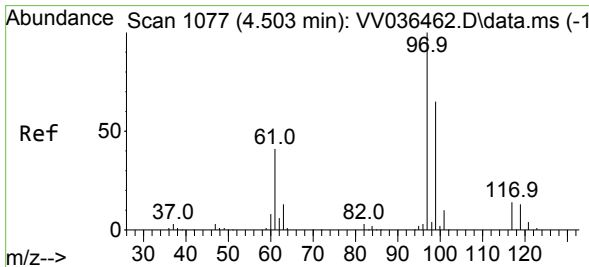
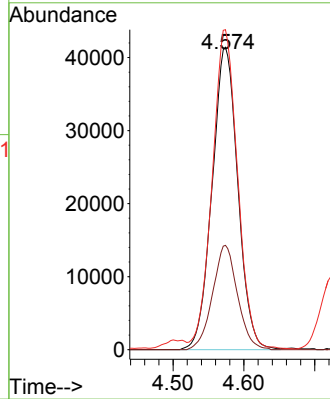
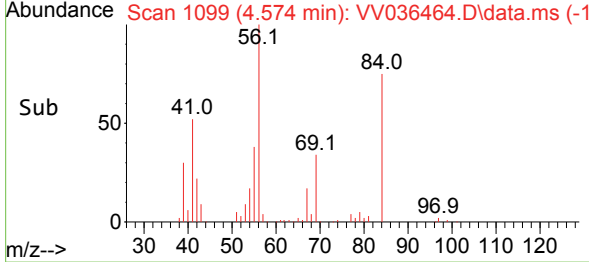
#29
 Cyclohexane
 Concen: 16.579 ug/L
 RT: 4.574 min Scan# 1099
 Delta R.T. -0.003 min
 Lab File: VV036464.D
 Acq: 08 Jul 2024 10:59

Instrument : MSVOA_V
 ClientSampleId :

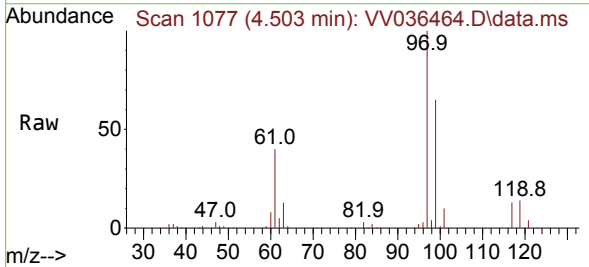


Tgt Ion: 56 Resp: 104442

Ion	Ratio	Lower	Upper
56	100		
69	33.4	26.0	39.0
84	102.3	77.4	116.0

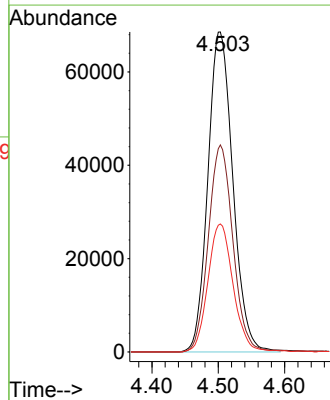
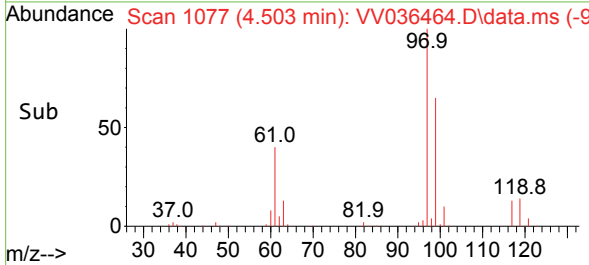


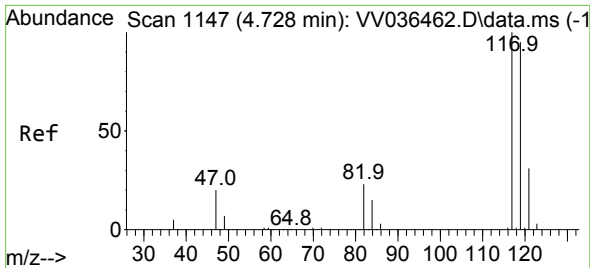
#30
 1,1,1-Trichloroethane
 Concen: 24.494 ug/L
 RT: 4.503 min Scan# 1077
 Delta R.T. 0.000 min
 Lab File: VV036464.D
 Acq: 08 Jul 2024 10:59



Tgt Ion: 97 Resp: 179584

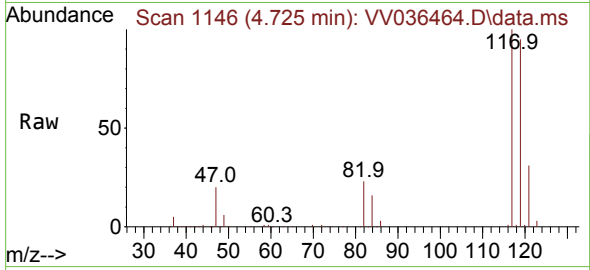
Ion	Ratio	Lower	Upper
97	100		
99	63.7	51.4	77.0
61	40.2	34.8	52.2



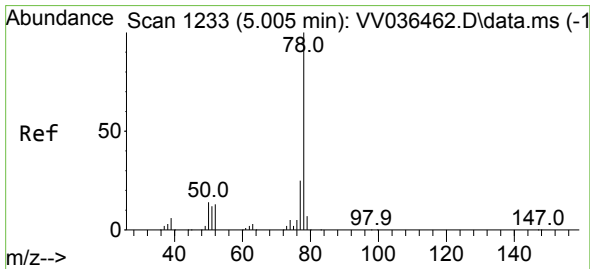
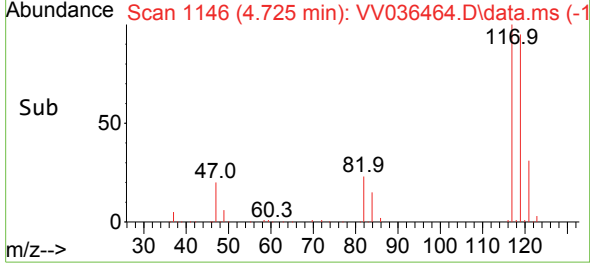
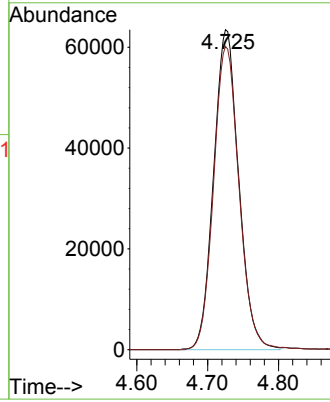


#31
 Carbon tetrachloride
 Concen: 23.907 ug/L
 RT: 4.725 min Scan# 1146
 Delta R.T. -0.003 min
 Lab File: VV036464.D
 Acq: 08 Jul 2024 10:59

Instrument : MSVOA_V
 ClientSampleId :

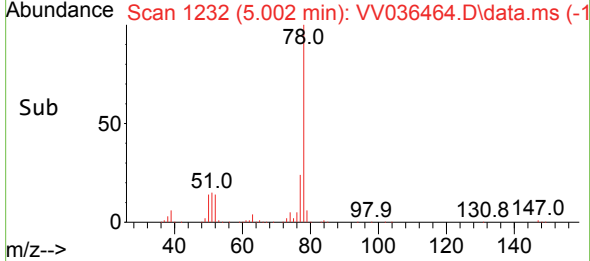
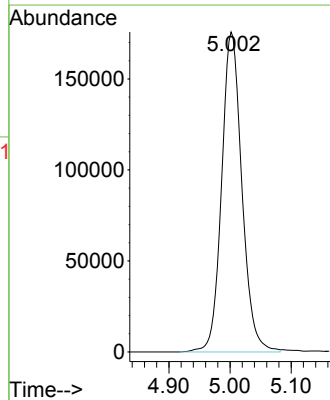
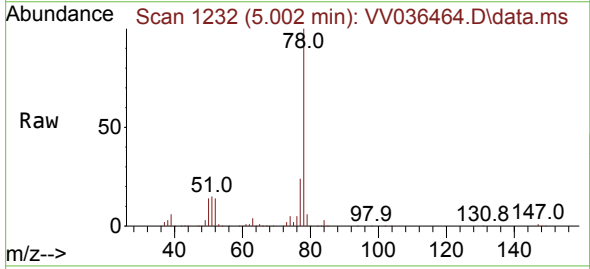


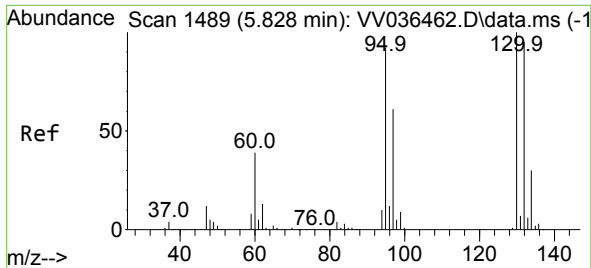
Tgt Ion:117 Resp: 156179
 Ion Ratio Lower Upper
 117 100
 119 95.9 77.2 115.8



#33
 Benzene
 Concen: 23.125 ug/L
 RT: 5.002 min Scan# 1232
 Delta R.T. 0.000 min
 Lab File: VV036464.D
 Acq: 08 Jul 2024 10:59

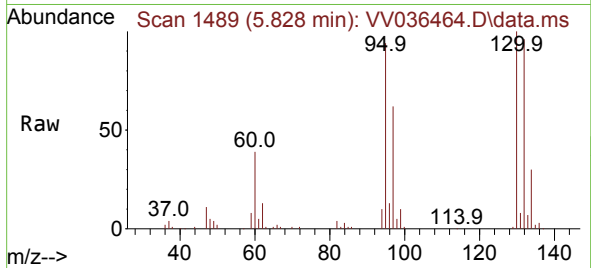
Tgt Ion: 78 Resp: 405006



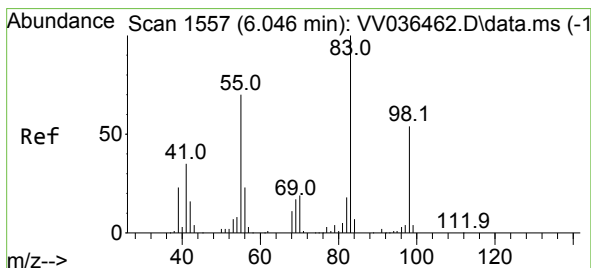
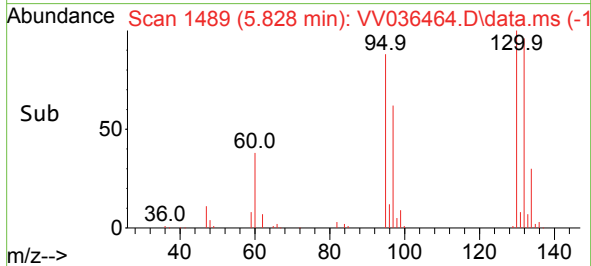
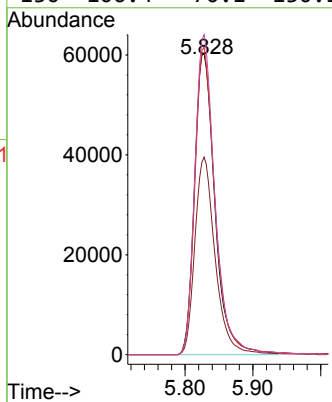


#34
 Trichloroethene
 Concen: 22.898 ug/L
 RT: 5.828 min Scan# 14
 Delta R.T. 0.000 min
 Lab File: VV036464.D
 Acq: 08 Jul 2024 10:59

Instrument :
 MSVOA_V
 ClientSampleId :

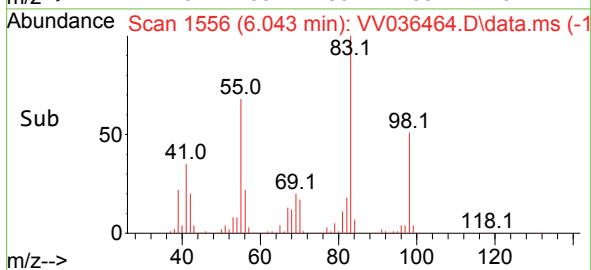
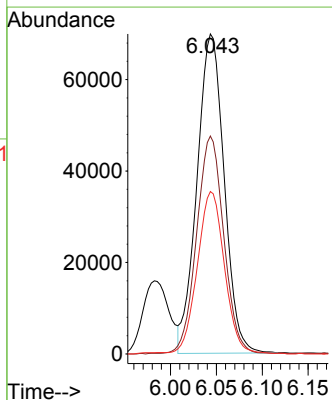
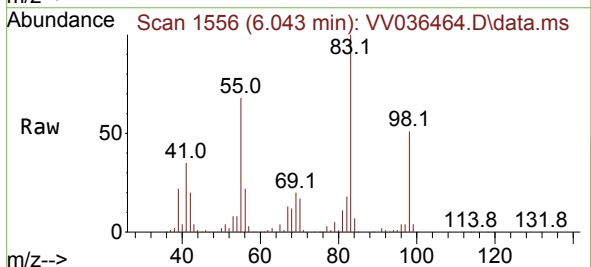


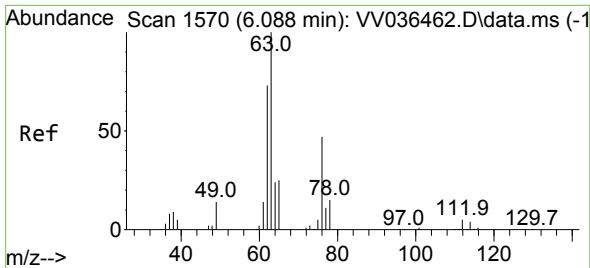
Tgt Ion: 95 Resp: 126552
 Ion Ratio Lower Upper
 95 100
 97 65.6 45.1 83.7
 132 102.2 67.7 125.7
 130 106.4 70.1 130.1



#35
 Methylcyclohexane
 Concen: 18.711 ug/L
 RT: 6.043 min Scan# 1556
 Delta R.T. -0.003 min
 Lab File: VV036464.D
 Acq: 08 Jul 2024 10:59

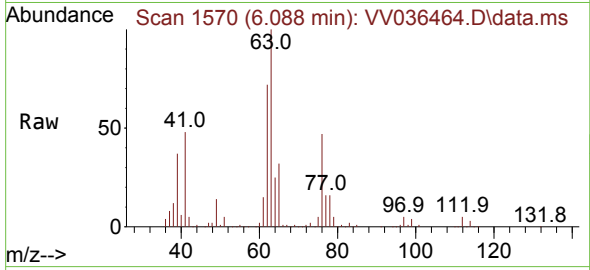
Tgt Ion: 83 Resp: 144117
 Ion Ratio Lower Upper
 83 100
 55 67.7 56.0 84.0
 98 50.5 39.0 58.6



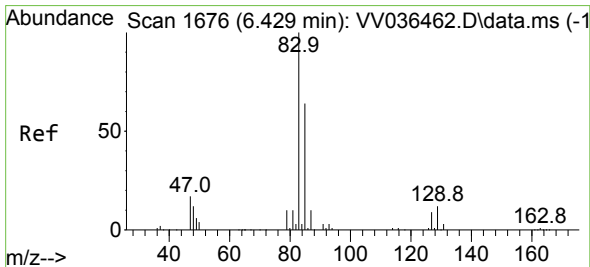
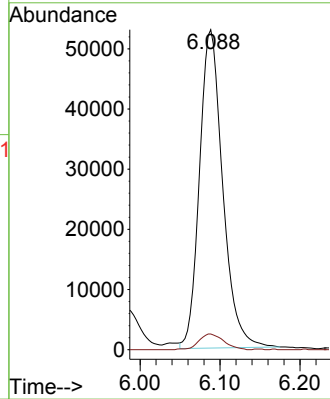
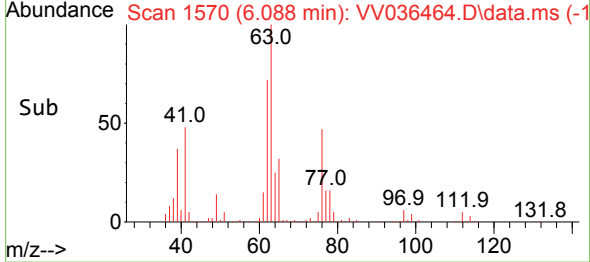


#37
 1,2-Dichloropropane
 Concen: 23.911 ug/L
 RT: 6.088 min Scan# 11
 Delta R.T. 0.000 min
 Lab File: VV036464.D
 Acq: 08 Jul 2024 10:59

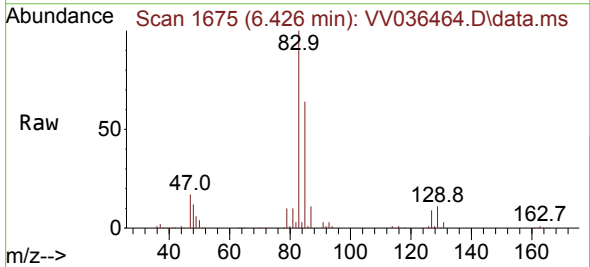
Instrument :
 MSVOA_V
 ClientSampleId :



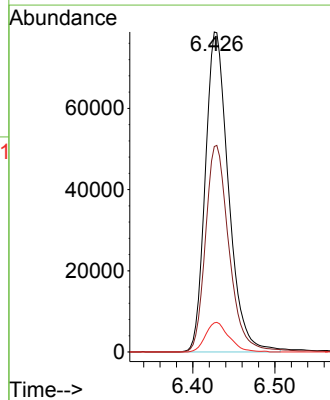
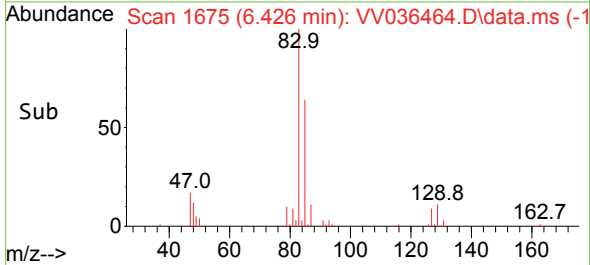
Tgt Ion: 63 Resp: 106953
 Ion Ratio Lower Upper
 63 100
 112 5.2 3.4 5.2#

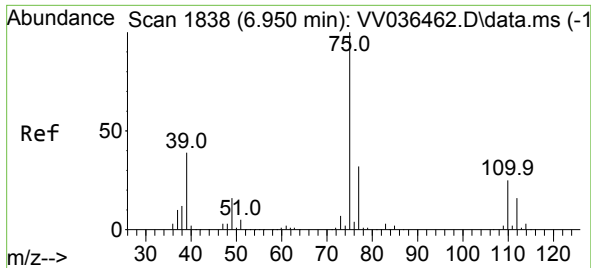


#38
 Bromodichloromethane
 Concen: 25.340 ug/L
 RT: 6.426 min Scan# 1675
 Delta R.T. -0.003 min
 Lab File: VV036464.D
 Acq: 08 Jul 2024 10:59



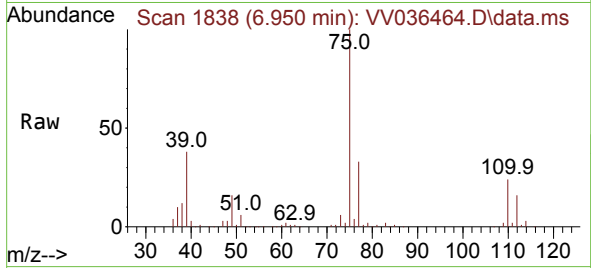
Tgt Ion: 83 Resp: 155019
 Ion Ratio Lower Upper
 83 100
 85 64.2 44.9 83.5
 127 9.1 7.0 10.6



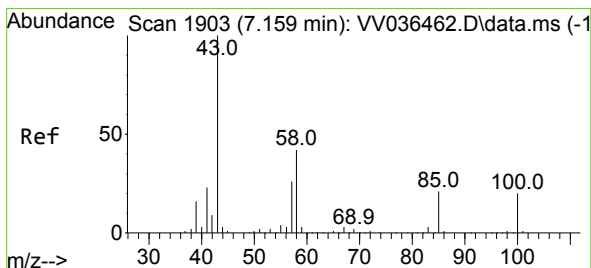
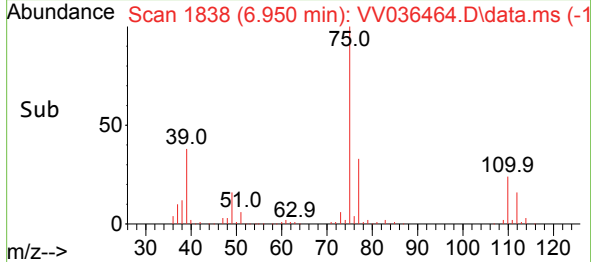
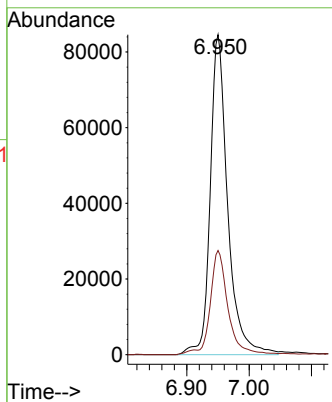


#39
 cis-1,3-Dichloropropene
 Concen: 23.861 ug/L
 RT: 6.950 min Scan# 1838
 Delta R.T. 0.000 min
 Lab File: VV036464.D
 Acq: 08 Jul 2024 10:59

Instrument : MSVOA_V
 ClientSampleId :

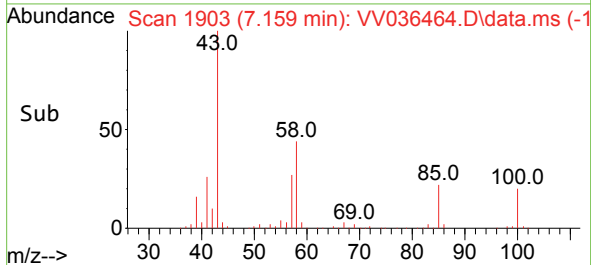
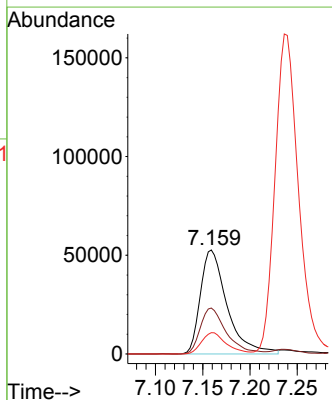
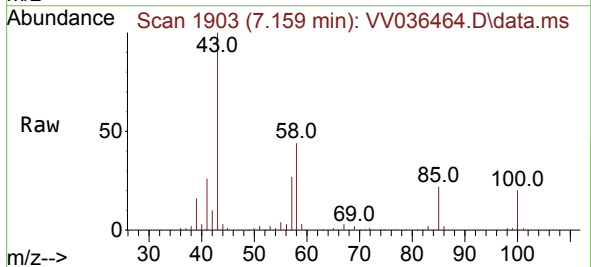


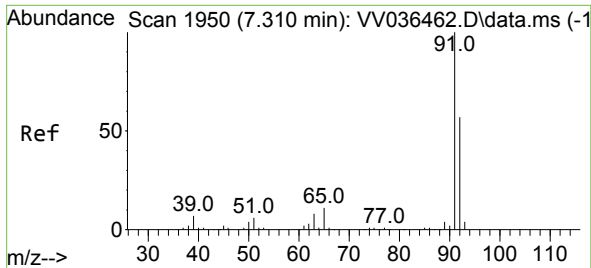
Tgt Ion: 75 Resp: 164115
 Ion Ratio Lower Upper
 75 100
 77 32.6 22.3 41.5



#40
 4-Methyl-2-pentanone
 Concen: 41.097 ug/L
 RT: 7.159 min Scan# 1903
 Delta R.T. 0.000 min
 Lab File: VV036464.D
 Acq: 08 Jul 2024 10:59

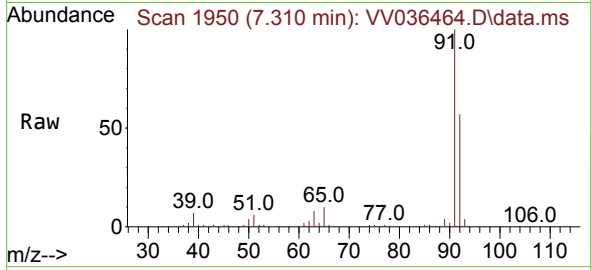
Tgt Ion: 43 Resp: 103672
 Ion Ratio Lower Upper
 43 100
 58 43.2 34.8 52.2
 100 19.0 14.6 21.8



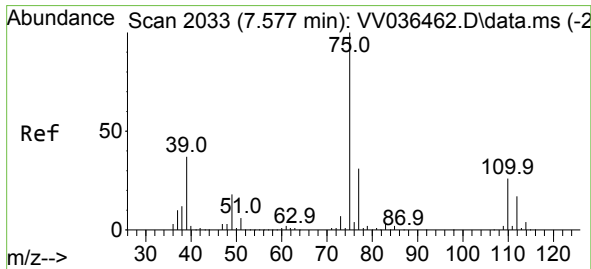
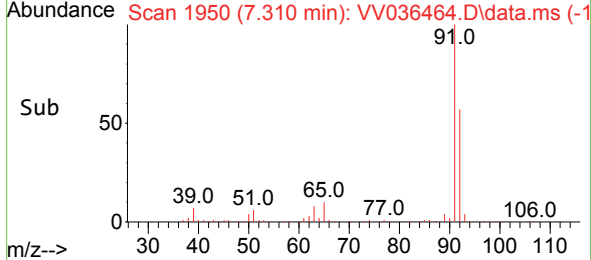
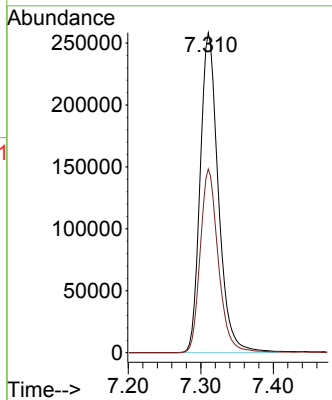


#42
 Toluene
 Concen: 24.566 ug/L
 RT: 7.310 min Scan# 1950
 Delta R.T. 0.000 min
 Lab File: VV036464.D
 Acq: 08 Jul 2024 10:59

Instrument : MSVOA_V
 ClientSampleId :

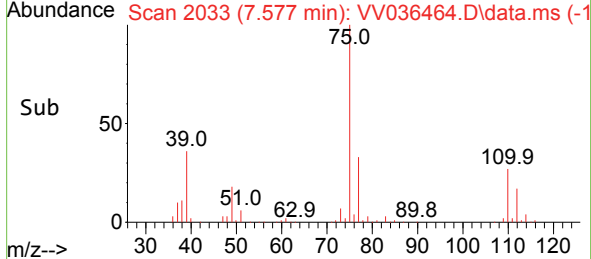
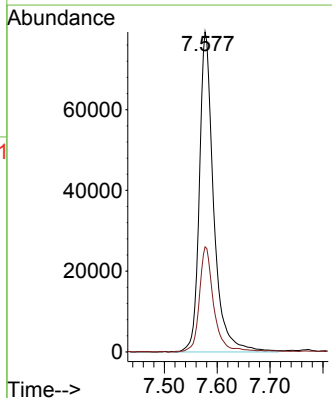
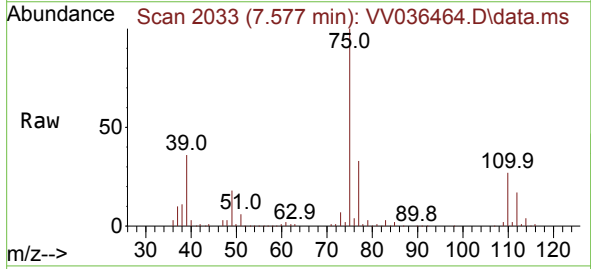


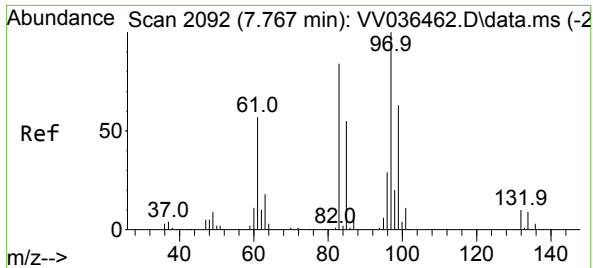
Tgt Ion: 91 Resp: 449864
 Ion Ratio Lower Upper
 91 100
 92 57.4 39.8 73.8



#44
 trans-1,3-Dichloropropene
 Concen: 24.070 ug/L
 RT: 7.577 min Scan# 2033
 Delta R.T. 0.000 min
 Lab File: VV036464.D
 Acq: 08 Jul 2024 10:59

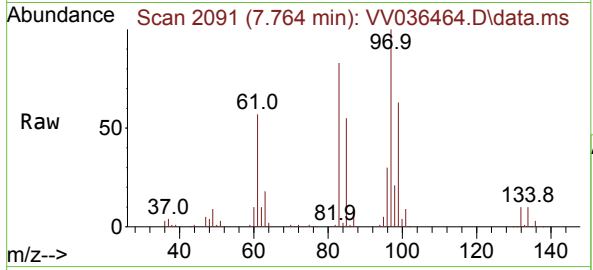
Tgt Ion: 75 Resp: 148906
 Ion Ratio Lower Upper
 75 100
 77 32.9 22.5 41.9





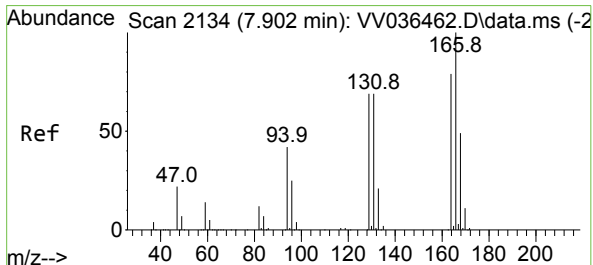
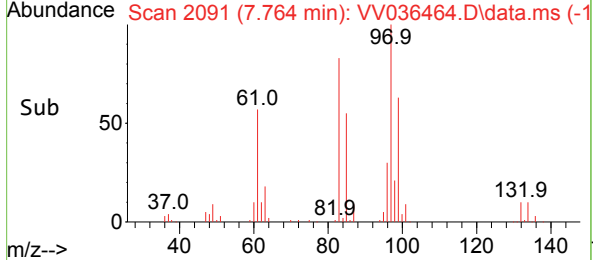
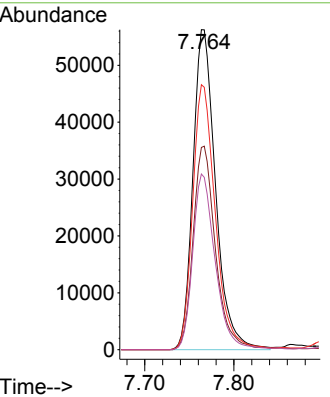
#45
 1,1,2-Trichloroethane
 Concen: 25.077 ug/L
 RT: 7.764 min Scan# 2091
 Delta R.T. -0.003 min
 Lab File: VV036464.D
 Acq: 08 Jul 2024 10:59

Instrument : MSVOA_V
 ClientSampleId :

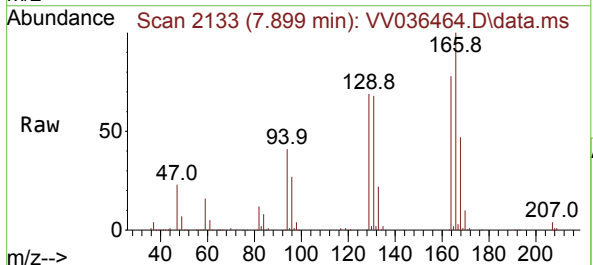


Tgt Ion: 97 Resp: 99141

Ion	Ratio	Lower	Upper
97	100		
99	63.2	43.8	81.3
83	82.8	60.6	112.6
85	54.9	38.8	72.0

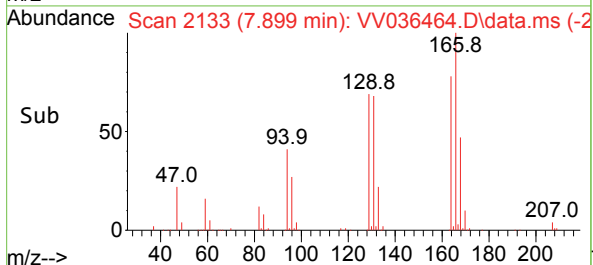
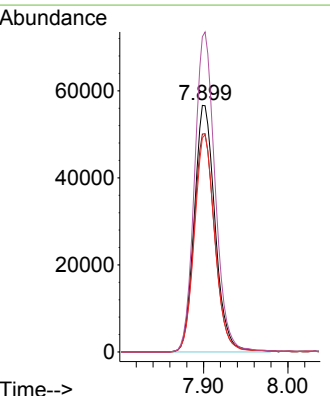


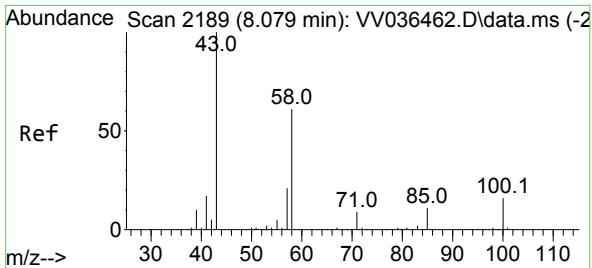
#46
 Tetrachloroethene
 Concen: 24.276 ug/L
 RT: 7.899 min Scan# 2133
 Delta R.T. -0.003 min
 Lab File: VV036464.D
 Acq: 08 Jul 2024 10:59



Tgt Ion: 164 Resp: 97506

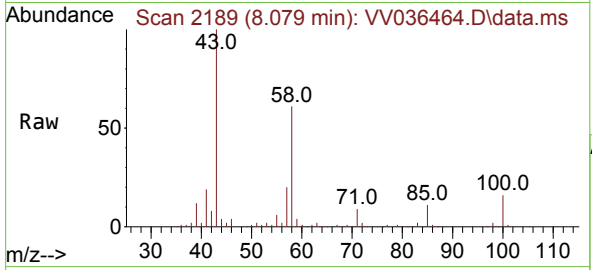
Ion	Ratio	Lower	Upper
164	100		
129	88.4	65.9	122.5
131	86.7	63.3	117.7
166	127.8	90.3	167.7





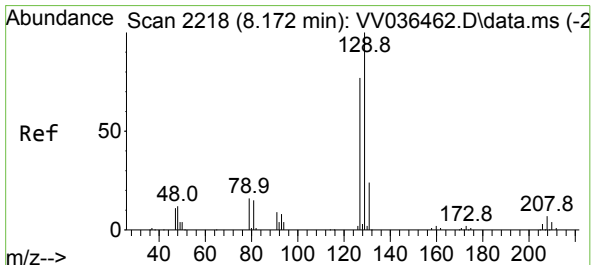
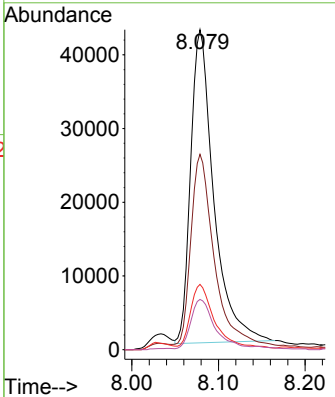
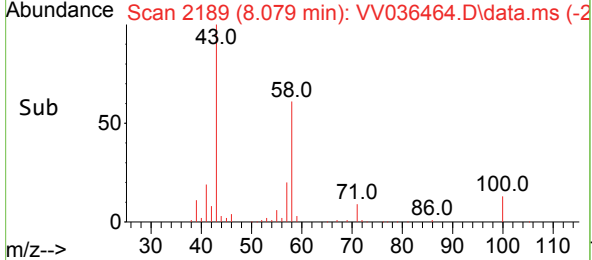
#48
 2-Hexanone
 Concen: 39.706 ug/L
 RT: 8.079 min Scan# 2189
 Delta R.T. 0.000 min
 Lab File: VV036464.D
 Acq: 08 Jul 2024 10:59

Instrument : MSVOA_V
 ClientSampleId :

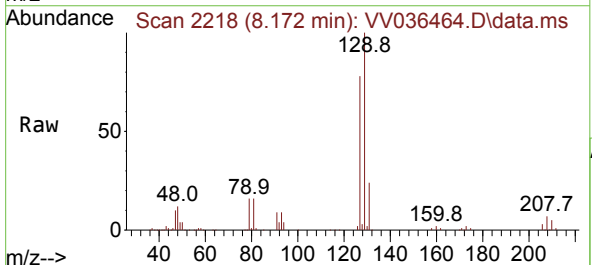


Tgt Ion: 43 Resp: 78786

Ion	Ratio	Lower	Upper
43	100		
58	62.6	48.5	72.7
57	21.5	15.8	23.6
100	16.2	10.9	16.3

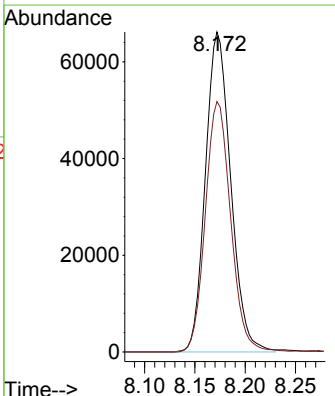
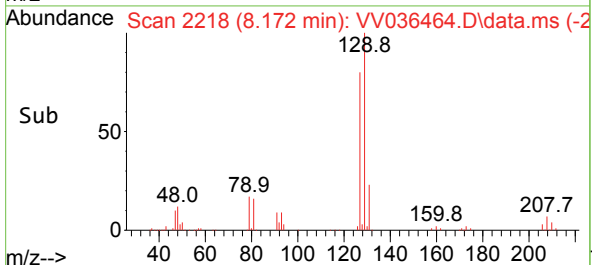


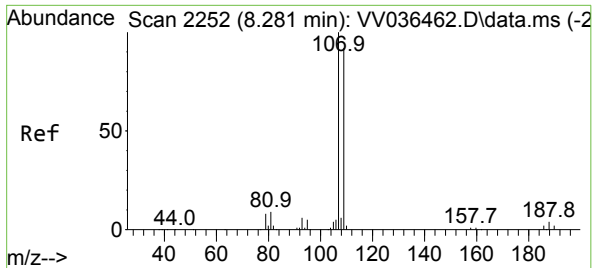
#49
 Dibromochloromethane
 Concen: 26.255 ug/L
 RT: 8.172 min Scan# 2218
 Delta R.T. 0.000 min
 Lab File: VV036464.D
 Acq: 08 Jul 2024 10:59



Tgt Ion: 129 Resp: 115714

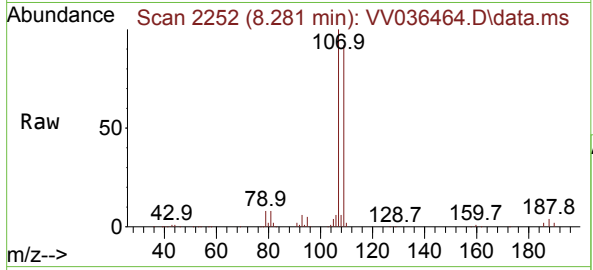
Ion	Ratio	Lower	Upper
129	100		
127	78.2	54.9	101.9



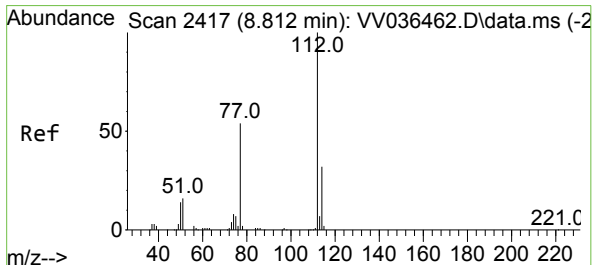
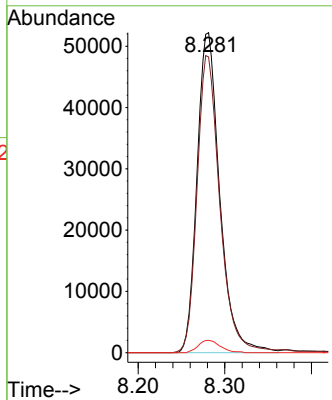
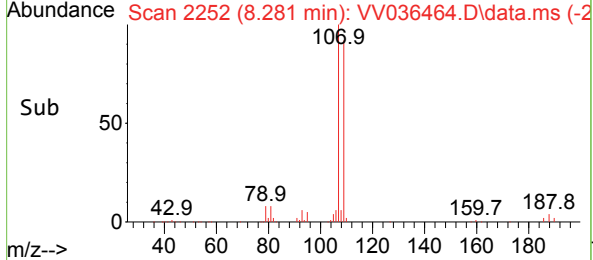


#50
 1,2-Dibromoethane
 Concen: 24.436 ug/L
 RT: 8.281 min Scan# 211
 Delta R.T. 0.003 min
 Lab File: VV036464.D
 Acq: 08 Jul 2024 10:59

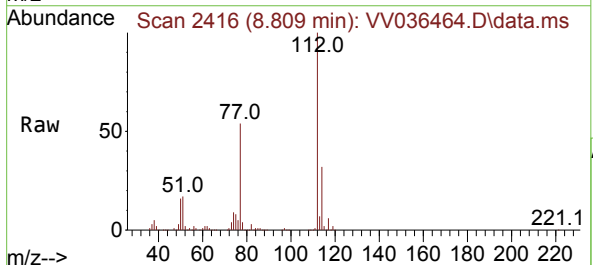
Instrument : MSVOA_V
 ClientSampleId :



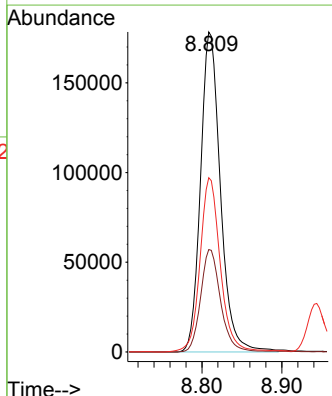
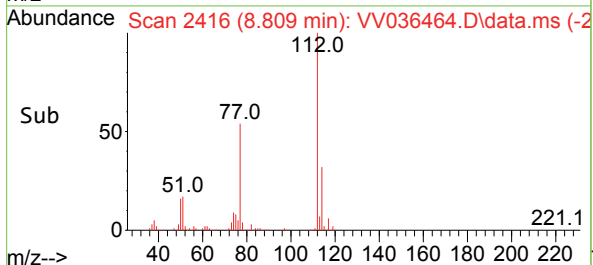
Tgt Ion	Resp	Lower	Upper
107	95174		
107	100		
109	92.4	64.7	120.1
188	3.8	3.0	4.6

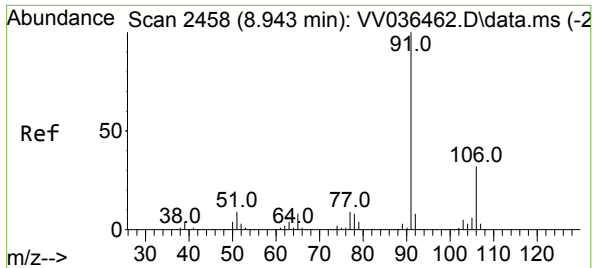


#51
 Chlorobenzene
 Concen: 24.719 ug/L
 RT: 8.809 min Scan# 2416
 Delta R.T. 0.000 min
 Lab File: VV036464.D
 Acq: 08 Jul 2024 10:59



Tgt Ion	Resp	Lower	Upper
112	309439		
112	100		
114	32.0	22.8	42.4
77	54.5	46.2	69.2

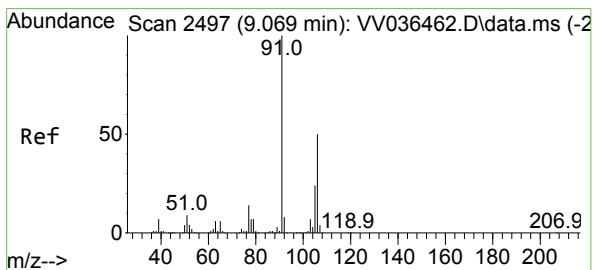
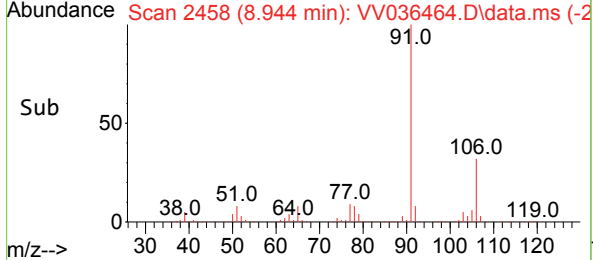
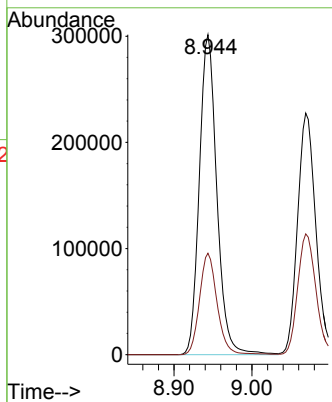
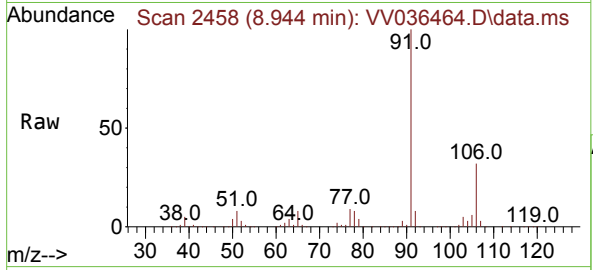




#52
 Ethylbenzene
 Concen: 23.792 ug/L
 RT: 8.944 min Scan# 2458
 Delta R.T. 0.000 min
 Lab File: VV036464.D
 Acq: 08 Jul 2024 10:59

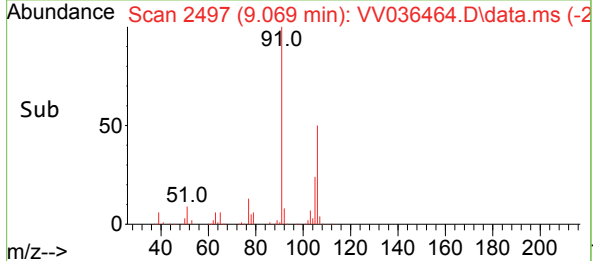
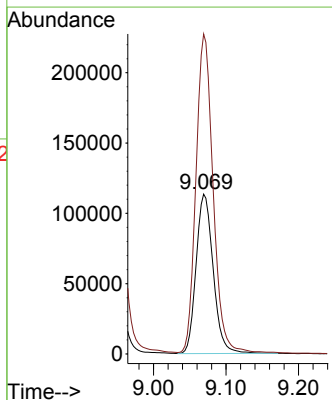
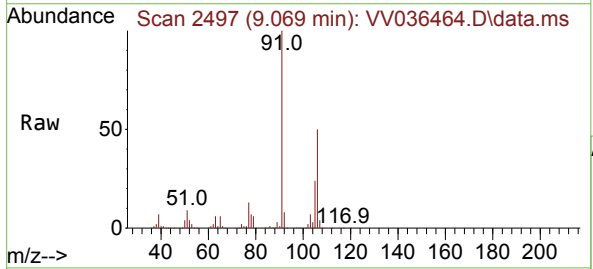
Instrument : MSVOA_V
 ClientSampleId :

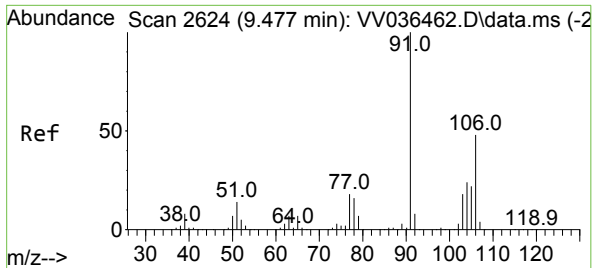
Tgt Ion: 91 Resp: 470195
 Ion Ratio Lower Upper
 91 100
 106 31.7 21.8 40.4



#53
 m,p-Xylene
 Concen: 25.242 ug/L
 RT: 9.069 min Scan# 2497
 Delta R.T. 0.000 min
 Lab File: VV036464.D
 Acq: 08 Jul 2024 10:59

Tgt Ion: 106 Resp: 185918
 Ion Ratio Lower Upper
 106 100
 91 200.1 142.2 264.0

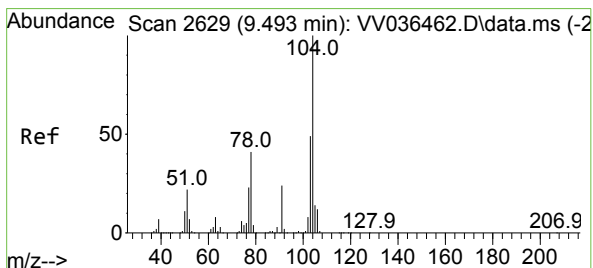
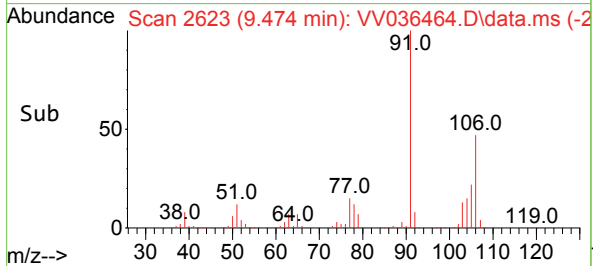
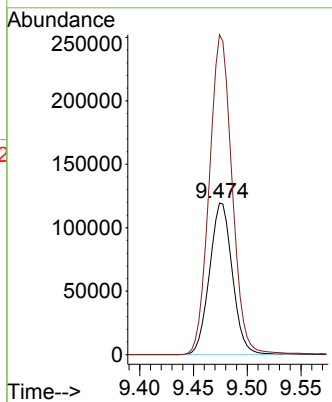
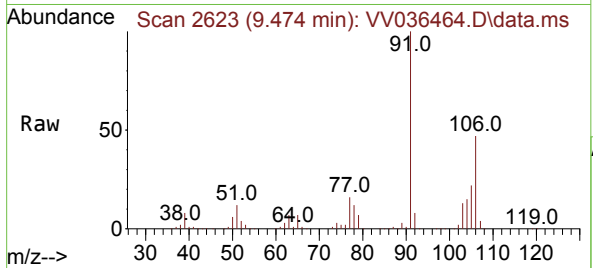




#54
 o-Xylene
 Concen: 25.501 ug/L
 RT: 9.474 min Scan# 2624
 Delta R.T. 0.000 min
 Lab File: VV036464.D
 Acq: 08 Jul 2024 10:59

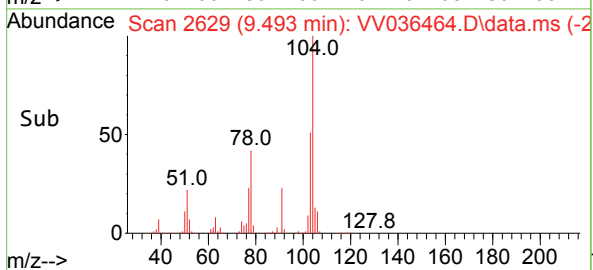
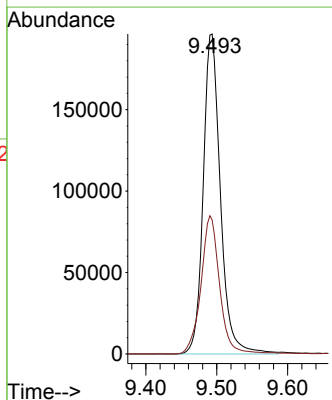
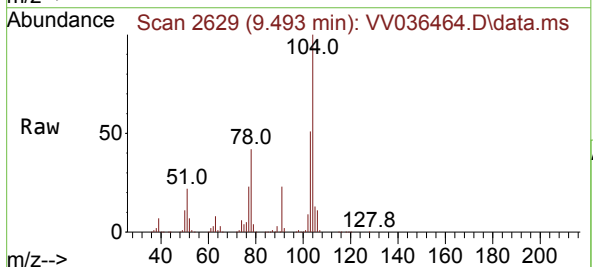
Instrument : MSVOA_V
 ClientSampleId :

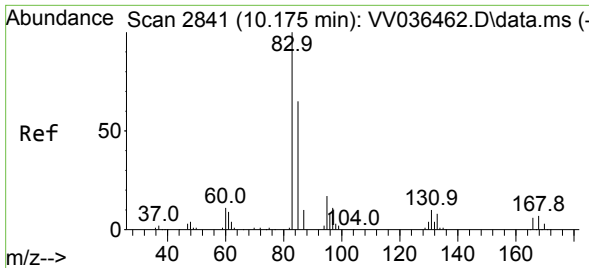
Tgt Ion:106 Resp: 176628
 Ion Ratio Lower Upper
 106 100
 91 211.0 152.7 283.7



#55
 Styrene
 Concen: 27.287 ug/L
 RT: 9.493 min Scan# 2629
 Delta R.T. 0.000 min
 Lab File: VV036464.D
 Acq: 08 Jul 2024 10:59

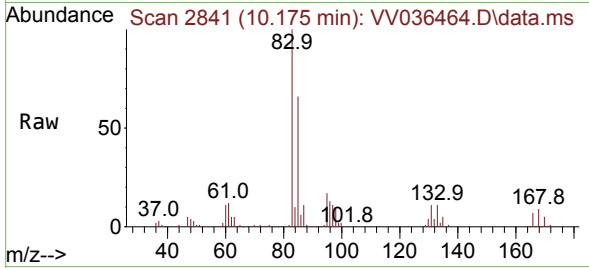
Tgt Ion:104 Resp: 331240
 Ion Ratio Lower Upper
 104 100
 78 41.9 30.2 56.2



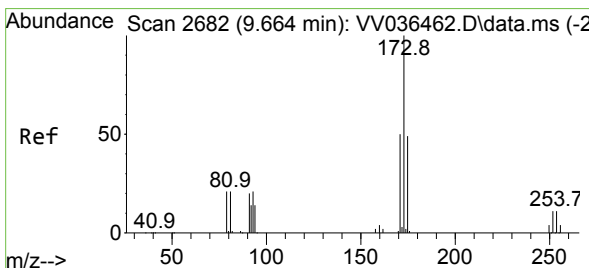
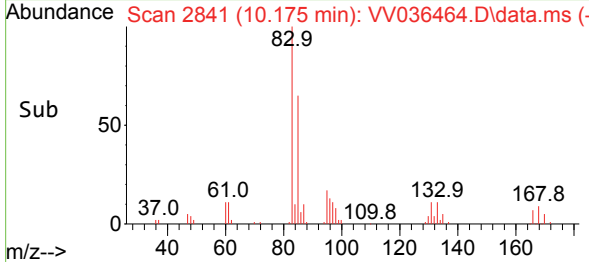
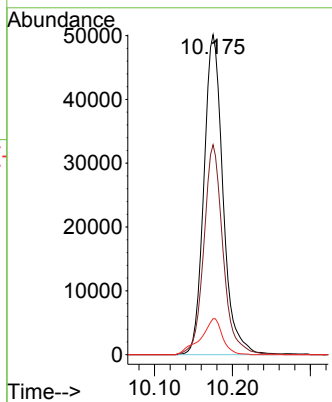


#57
 1,1,2,2-Tetrachloroethane
 Concen: 24.126 ug/L
 RT: 10.175 min Scan# 2841
 Delta R.T. 0.000 min
 Lab File: VV036464.D
 Acq: 08 Jul 2024 10:59

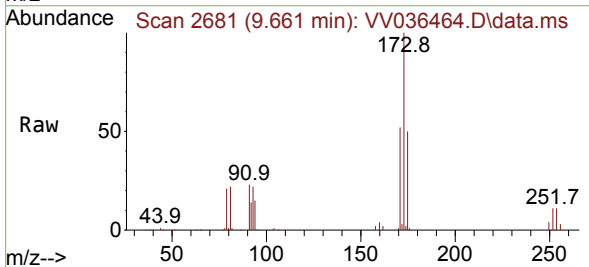
Instrument : MSVOA_V
 ClientSampleId :



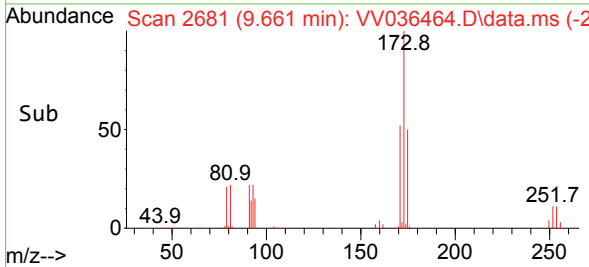
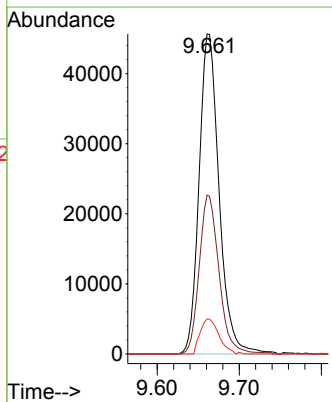
Tgt Ion	Resp	Lower	Upper
83	100		
85	65.6	45.7	84.9
131	11.3	7.8	11.6

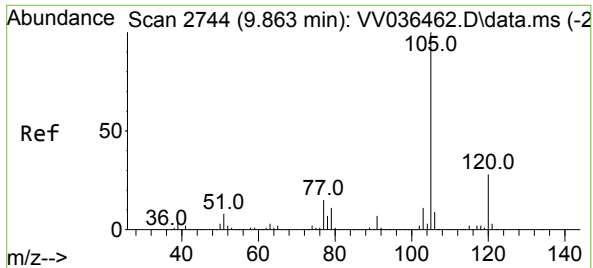


#59
 Bromoform
 Concen: 22.835 ug/L
 RT: 9.661 min Scan# 2681
 Delta R.T. 0.000 min
 Lab File: VV036464.D
 Acq: 08 Jul 2024 10:59



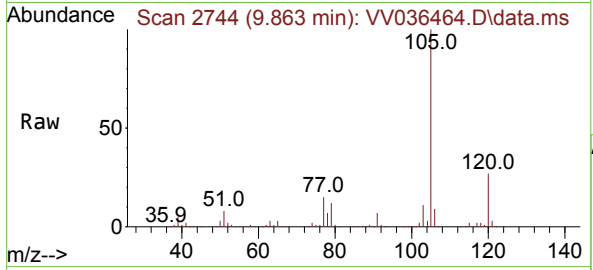
Tgt Ion	Resp	Lower	Upper
173	100		
175	48.9	38.9	58.3
254	10.1	7.2	10.8





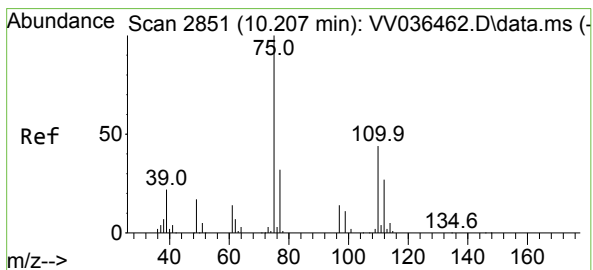
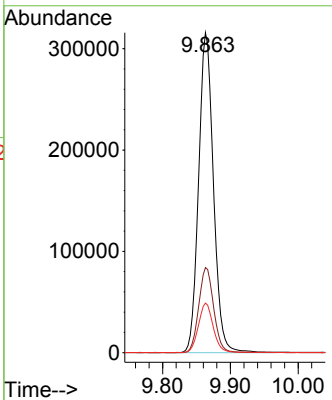
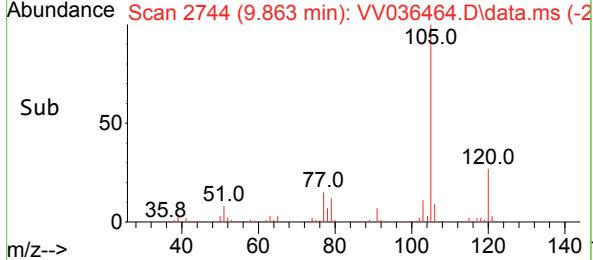
#60
 Isopropylbenzene
 Concen: 22.148 ug/L
 RT: 9.863 min Scan# 21
 Delta R.T. 0.000 min
 Lab File: VV036464.D
 Acq: 08 Jul 2024 10:59

Instrument : MSVOA_V
 ClientSampleId :

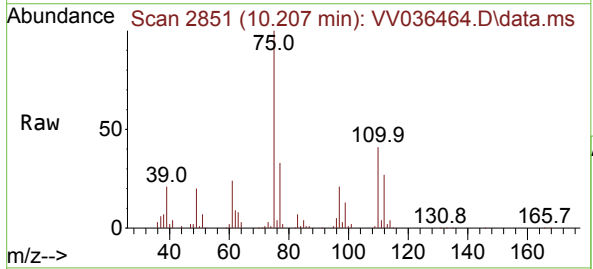


Tgt Ion: 105 Resp: 480017

Ion	Ratio	Lower	Upper
105	100		
120	26.8	21.2	31.8
77	15.3	12.5	18.7

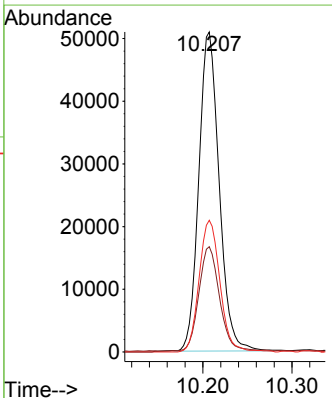
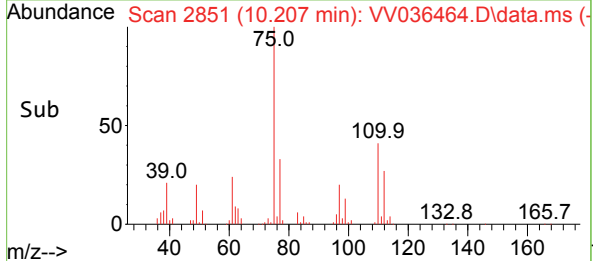


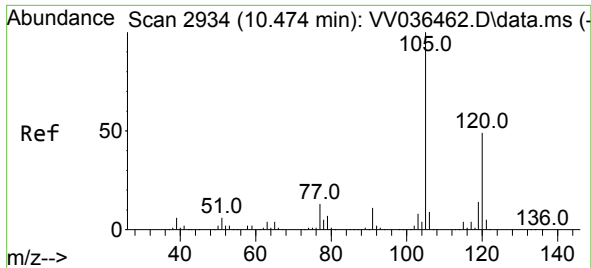
#61
 1,2,3-Trichloropropane
 Concen: 19.910 ug/L
 RT: 10.207 min Scan# 2851
 Delta R.T. 0.000 min
 Lab File: VV036464.D
 Acq: 08 Jul 2024 10:59



Tgt Ion: 75 Resp: 80559

Ion	Ratio	Lower	Upper
75	100		
77	32.7	25.2	37.8
110	42.0	31.7	47.5

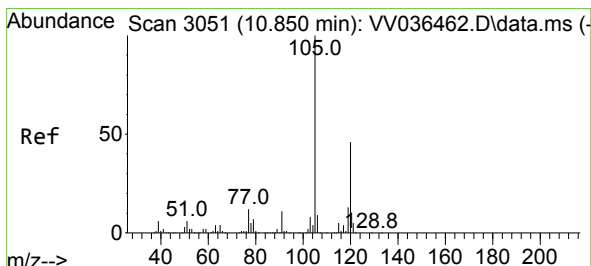
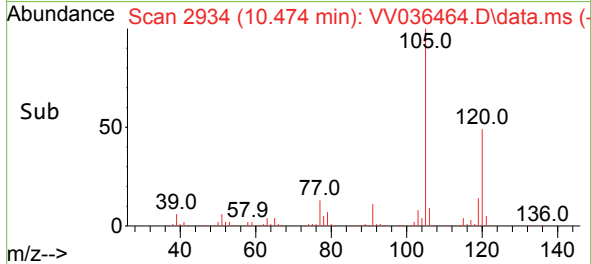
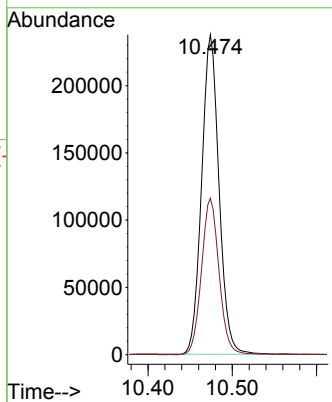
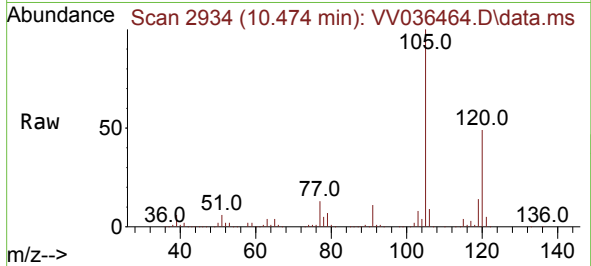




#62
 1,3,5-Trimethylbenzene
 Concen: 22.041 ug/L
 RT: 10.474 min Scan# 2934
 Delta R.T. 0.000 min
 Lab File: VV036464.D
 Acq: 08 Jul 2024 10:59

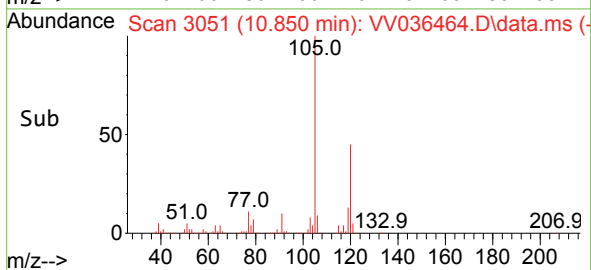
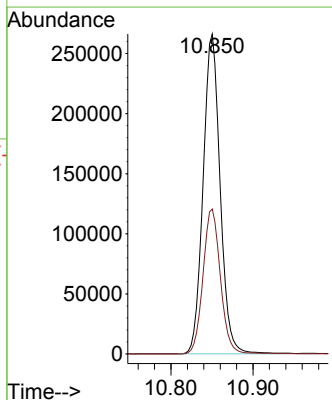
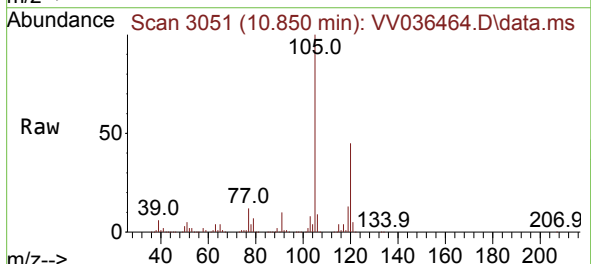
Instrument : MSVOA_V
 ClientSampleId :

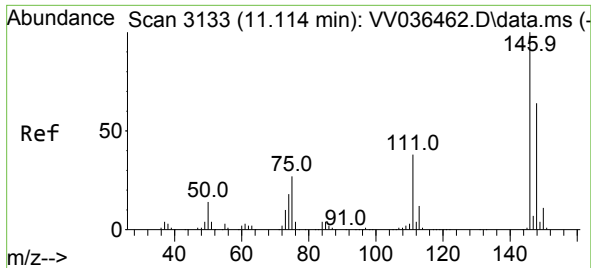
Tgt Ion:105 Resp: 341869
 Ion Ratio Lower Upper
 105 100
 120 49.6 39.1 58.7



#63
 1,2,4-Trimethylbenzene
 Concen: 22.766 ug/L
 RT: 10.850 min Scan# 3051
 Delta R.T. 0.000 min
 Lab File: VV036464.D
 Acq: 08 Jul 2024 10:59

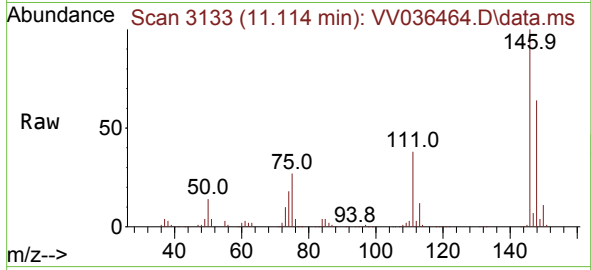
Tgt Ion:105 Resp: 383711
 Ion Ratio Lower Upper
 105 100
 120 46.5 36.2 54.4



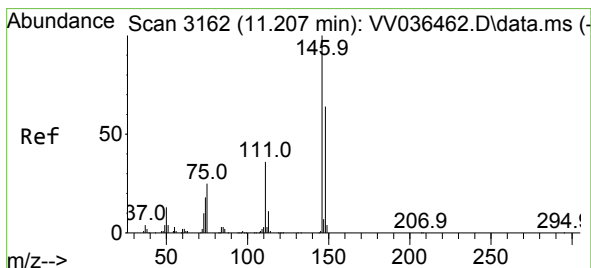
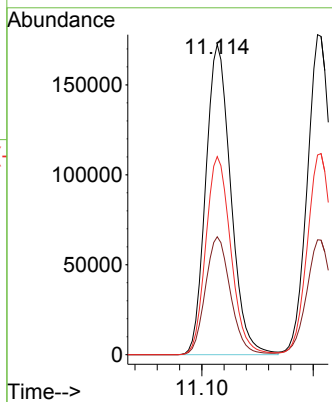
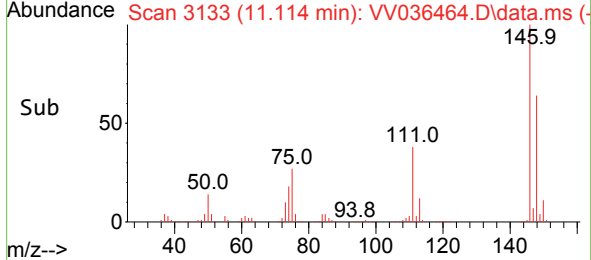


#64
 1,3-Dichlorobenzene
 Concen: 23.850 ug/L
 RT: 11.114 min Scan# 3133
 Delta R.T. 0.000 min
 Lab File: VV036464.D
 Acq: 08 Jul 2024 10:59

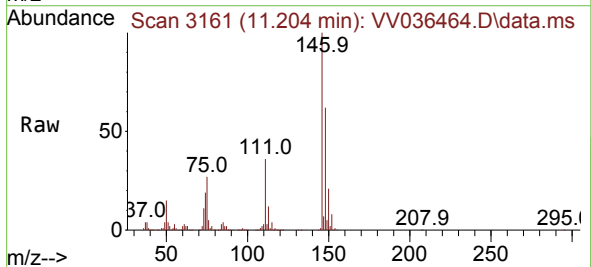
Instrument : MSVOA_V
 ClientSampleId :



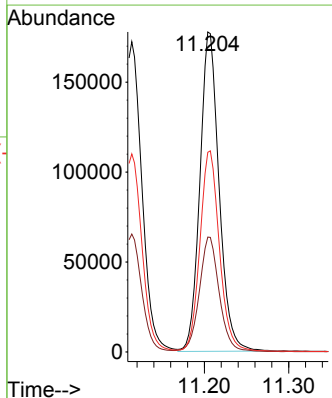
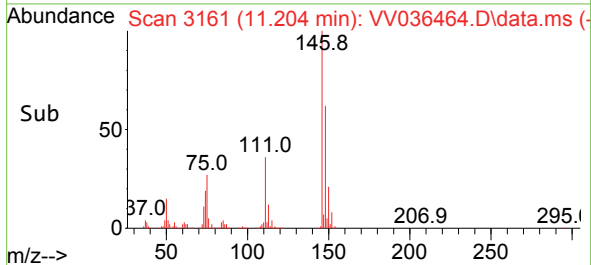
Tgt Ion:146 Resp: 269351
 Ion Ratio Lower Upper
 146 100
 111 38.0 27.5 51.1
 148 63.9 44.9 83.3

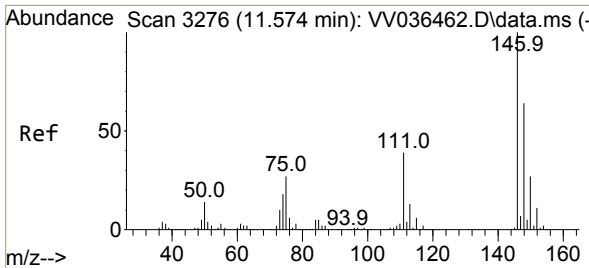


#65
 1,4-Dichlorobenzene
 Concen: 23.255 ug/L
 RT: 11.204 min Scan# 3161
 Delta R.T. 0.000 min
 Lab File: VV036464.D
 Acq: 08 Jul 2024 10:59



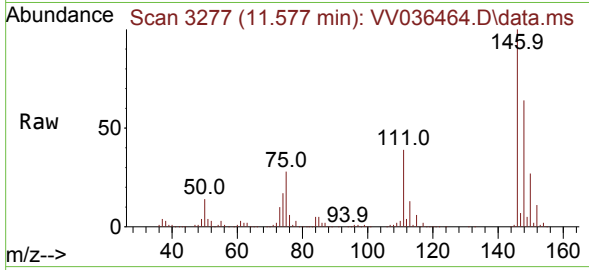
Tgt Ion:146 Resp: 281520
 Ion Ratio Lower Upper
 146 100
 111 35.9 27.5 51.1
 148 62.4 44.0 81.8



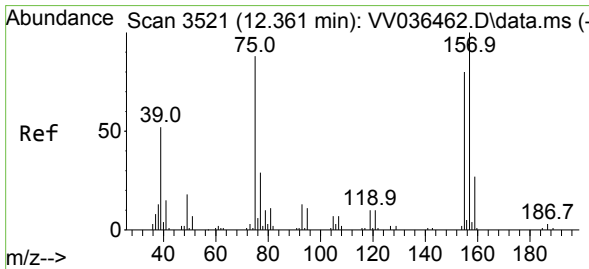
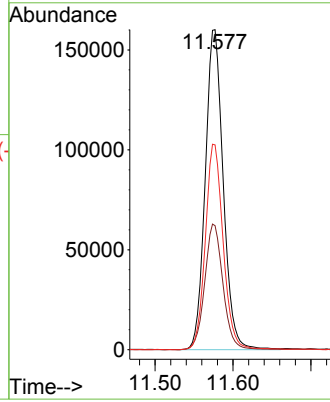
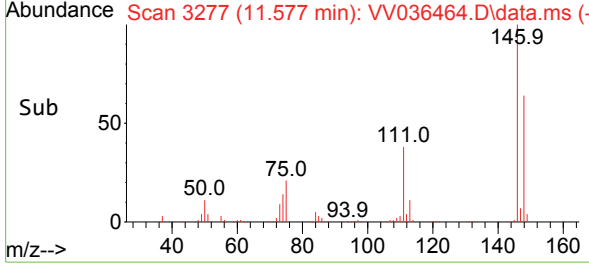


#67
 1,2-Dichlorobenzene
 Concen: 23.819 ug/L
 RT: 11.577 min Scan# 3277
 Delta R.T. 0.003 min
 Lab File: VV036464.D
 Acq: 08 Jul 2024 10:59

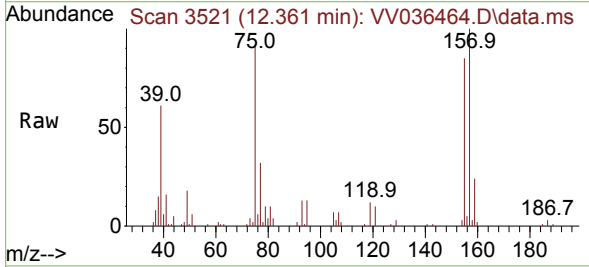
Instrument : MSVOA_V
 ClientSampleId :



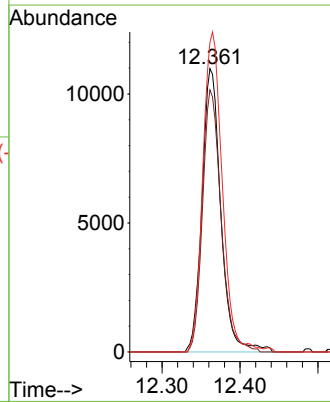
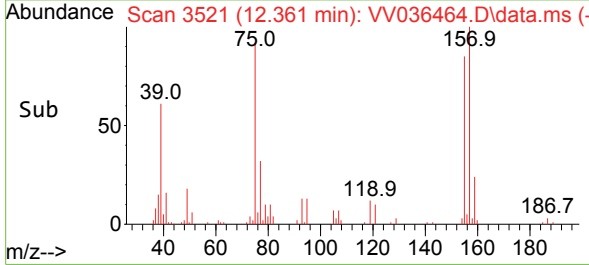
Tgt Ion:146 Resp: 256801
 Ion Ratio Lower Upper
 146 100
 111 38.8 33.3 49.9
 148 64.0 51.1 76.7

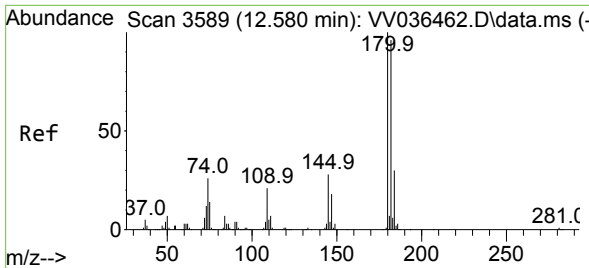


#68
 1,2-Dibromo-3-chloropropane
 Concen: 20.286 ug/L
 RT: 12.361 min Scan# 3521
 Delta R.T. 0.000 min
 Lab File: VV036464.D
 Acq: 08 Jul 2024 10:59



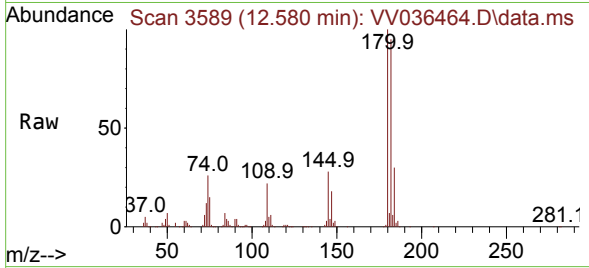
Tgt Ion: 75 Resp: 18415
 Ion Ratio Lower Upper
 75 100
 155 92.5 68.3 102.5
 157 109.3 95.7 143.5





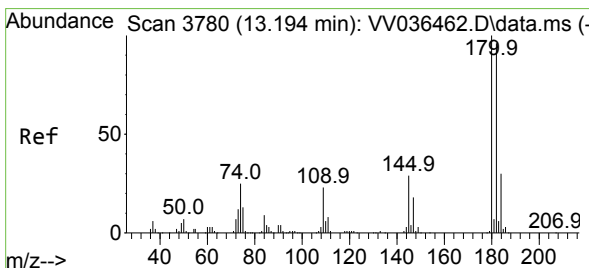
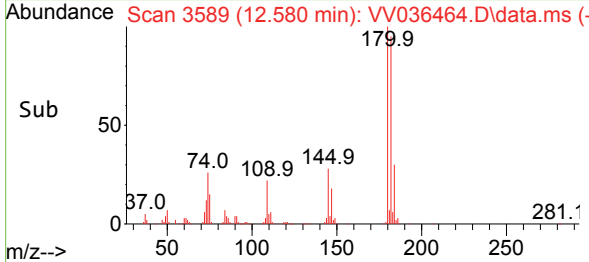
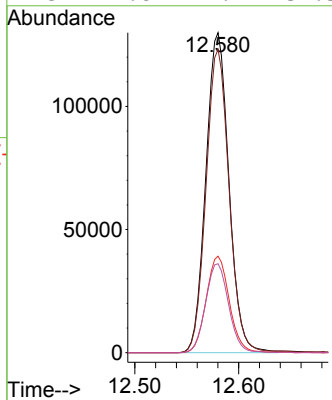
#69
 1,3,5-Trichlorobenzene
 Concen: 23.506 ug/L
 RT: 12.580 min Scan# 3589
 Delta R.T. 0.003 min
 Lab File: VV036464.D
 Acq: 08 Jul 2024 10:59

Instrument : MSVOA_V
 ClientSampleId :



Tgt Ion:180 Resp: 199887

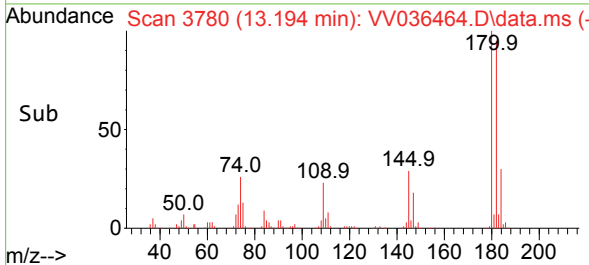
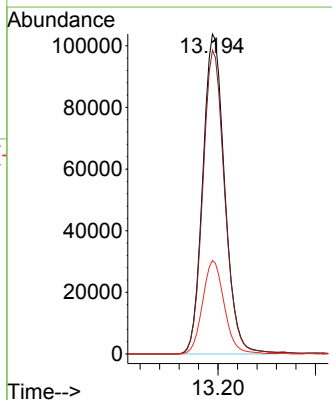
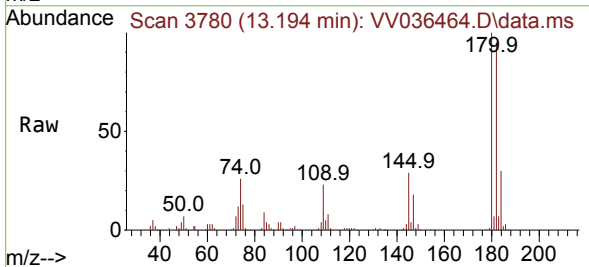
Ion	Ratio	Lower	Upper
180	100		
182	94.4	76.2	114.4
184	30.4	23.3	34.9
145	27.8	22.9	34.3

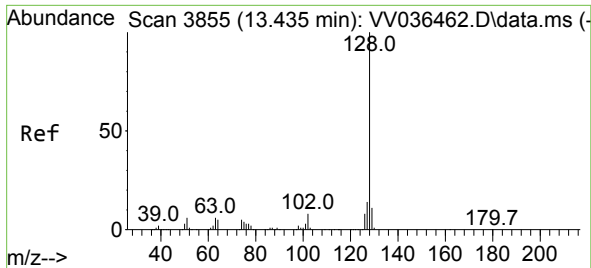


#70
 1,2,4-trichlorobenzene
 Concen: 23.869 ug/L
 RT: 13.194 min Scan# 3780
 Delta R.T. 0.000 min
 Lab File: VV036464.D
 Acq: 08 Jul 2024 10:59

Tgt Ion:180 Resp: 161863

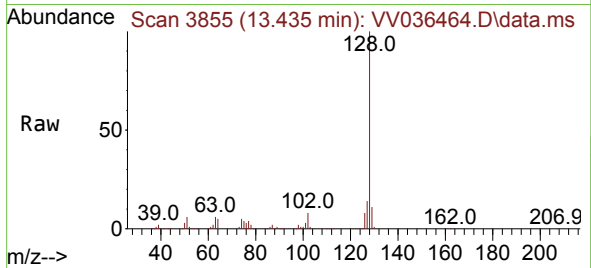
Ion	Ratio	Lower	Upper
180	100		
182	95.1	76.1	114.1
145	28.9	23.8	35.8



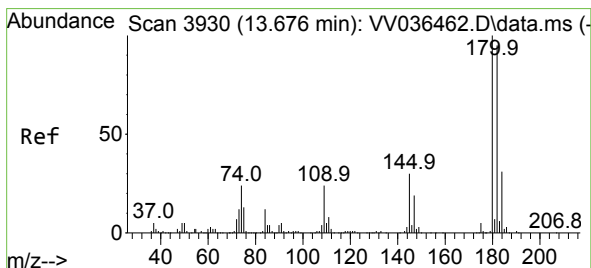
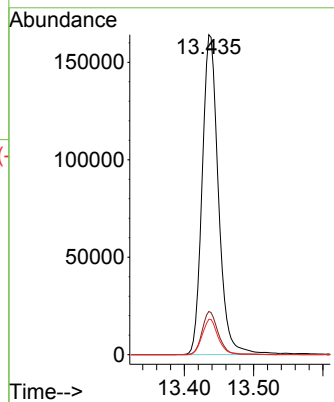
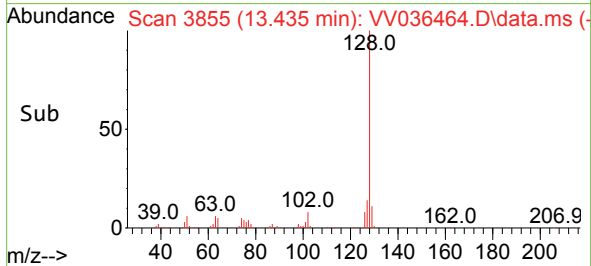


#71
 Naphthalene
 Concen: 22.055 ug/L
 RT: 13.435 min Scan# 3855
 Delta R.T. 0.000 min
 Lab File: VV036464.D
 Acq: 08 Jul 2024 10:59

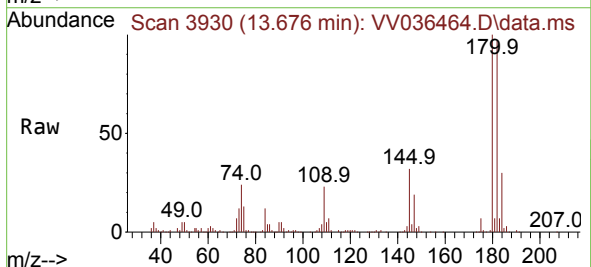
Instrument : MSVOA_V
 ClientSampleId :



Tgt Ion:128 Resp: 266662
 Ion Ratio Lower Upper
 128 100
 127 13.2 10.8 16.2
 129 10.9 8.6 13.0



#72
 1,2,3-Trichlorobenzene
 Concen: 25.094 ug/L
 RT: 13.676 min Scan# 3930
 Delta R.T. 0.000 min
 Lab File: VV036464.D
 Acq: 08 Jul 2024 10:59



Tgt Ion:180 Resp: 160015
 Ion Ratio Lower Upper
 180 100
 182 96.5 76.7 115.1
 145 30.7 25.0 37.4

