

Data Path : Z:\voasrv\HPCHEM1\MSVOA_V\Data\VV080122\
 Data File : VV027139.D
 Acq On : 01 Aug 2022 20:54
 Operator : SY/MD
 Sample : N3955-05
 Misc : 5.0mL/MSVOA_V/WATER
 ALS Vial : 18 Sample Multiplier: 1

Instrument :
 MSVOA_V
 ClientSampleId :
 VHBLK001

Integration Parameters: LSCINT.P

Integrator: RTE
 Smoothing : OFF
 Sampling : 1
 Start Thrs : 0.2
 Stop Thrs : 0

Filtering: 5
 Min Area: 0 % of largest Peak
 Max Peaks: 100
 Peak Location: TOP

If leading or trailing edge < 100 prefer < Baseline drop else tangent >
 Peak separation: 5

Method : Z:\voasrv\HPCHEM1\MSVOA_V\Method\SFAMVLM080122WMA.M
 Title : VOC Analysis

Signal : TIC: VV027139.D\data.ms

peak #	R.T. min	first scan	max scan	last scan	PK TY	peak height	corr. area	corr. % max.	% of total
1	1.304	75	82	97	rBV	404257	423118	16.81%	2.301%
2	1.561	155	162	176	rVB	321947	368411	14.63%	2.003%
3	2.104	320	331	344	rBV	661925	940271	37.35%	5.112%
4	2.285	380	387	415	rVB4	24908	50815	2.02%	0.276%
5	2.503	446	455	466	rBV4	7013	11027	0.44%	0.060%
6	2.629	490	494	499	rVB4	476	440	0.02%	0.002%
7	2.699	513	516	519	rVB2	531	354	0.01%	0.002%
8	2.767	531	537	542	rVB5	848	1069	0.04%	0.006%
9	3.101	636	641	643	rBV2	449	402	0.02%	0.002%
10	3.185	665	667	671	rVB3	492	317	0.01%	0.002%
11	3.211	671	675	678	rBV3	461	456	0.02%	0.002%
12	3.423	737	741	746	rVB3	376	385	0.02%	0.002%
13	3.455	746	751	755	rBV2	483	485	0.02%	0.003%
14	3.629	800	805	806	rBV	355	266	0.01%	0.001%
15	3.873	871	881	914	rBV	182169	504841	20.05%	2.745%
16	4.342	1011	1027	1070	rBV	399861	1011759	40.19%	5.501%
17	4.664	1124	1127	1134	rVB3	722	639	0.03%	0.003%
18	4.805	1165	1171	1172	rBV4	557	405	0.02%	0.002%
19	4.921	1205	1207	1212	rVB2	556	351	0.01%	0.002%
20	4.956	1212	1218	1221	rBV2	336	322	0.01%	0.002%
21	4.976	1221	1224	1228	rBV	323	279	0.01%	0.002%
22	5.043	1228	1245	1284	rBV2	958429	2517704	100.00%	13.689%
23	5.365	1343	1345	1350	rVB3	758	397	0.02%	0.002%
24	5.410	1355	1359	1364	rVB4	544	527	0.02%	0.003%
25	5.490	1381	1384	1387	rVB4	866	525	0.02%	0.003%
26	5.519	1389	1393	1396	rVB3	435	342	0.01%	0.002%
27	5.558	1401	1405	1408	rBV3	443	393	0.02%	0.002%
28	5.612	1409	1422	1465	rBV	666771	1399943	55.60%	7.612%
29	5.908	1504	1514	1533	rVB6	13243	30847	1.23%	0.168%
30	6.066	1549	1563	1596	rBV	545566	1136478	45.14%	6.179%
31	6.294	1631	1634	1636	rBV3	617	446	0.02%	0.002%
32	6.362	1652	1655	1659	rBV2	630	570	0.02%	0.003%
33	6.429	1675	1676	1681	rVV3	370	262	0.01%	0.001%
34	6.458	1681	1685	1690	rVB2	389	403	0.02%	0.002%
35	6.661	1743	1748	1752	rVB2	379	445	0.02%	0.002%
36	6.686	1752	1756	1759	rBV3	446	382	0.02%	0.002%

Data Path : Z:\voasrv\HPCHEM1\MSVOA_V\Data\VW080122\
 Data File : VW027139.D
 Acq On : 01 Aug 2022 20:54
 Operator : SY/MD
 Sample : N3955-05
 Misc : 5.0mL/MSVOA_V/WATER
 ALS Vial : 18 Sample Multiplier: 1

Instrument :
 MSVOA_V
 ClientSampleId :
 VHBLK001

Integration Parameters: LSCINT.P

Integrator: RTE
 Smoothing : OFF
 Sampling : 1
 Start Thrs: 0.2
 Stop Thrs : 0

Filtering: 5
 Min Area: 0 % of largest Peak
 Max Peaks: 100
 Peak Location: TOP

If leading or trailing edge < 100 prefer < Baseline drop else tangent >
 Peak separation: 5

Method : Z:\voasrv\HPCHEM1\MSVOA_V\Method\SFAMVLM080122WMA.M
 Title : VOC Analysis

37	6.738	1769	1772	1777	rVB3	411	314	0.01%	0.002%
38	6.915	1821	1827	1832	rBV	257	351	0.01%	0.002%
39	6.982	1832	1848	1880	rBV	262319	501851	19.93%	2.729%
40	7.246	1927	1930	1932	rBV3	488	383	0.02%	0.002%
41	7.313	1939	1951	1990	rBV	1103498	1966777	78.12%	10.693%
42	7.554	2024	2026	2032	rVB3	759	694	0.03%	0.004%
43	7.619	2036	2046	2078	rBV	185701	339463	13.48%	1.846%
44	7.783	2095	2097	2103	rBV6	353	286	0.01%	0.002%
45	7.931	2139	2143	2144	rBV2	438	341	0.01%	0.002%
46	7.976	2152	2157	2161	rBV6	1539	1757	0.07%	0.010%
47	8.088	2181	2192	2232	rBV	603835	1160016	46.07%	6.307%
48	8.490	2313	2317	2320	rVB2	668	483	0.02%	0.003%
49	8.519	2320	2326	2328	rBV4	624	551	0.02%	0.003%
50	8.715	2384	2387	2390	rBV3	477	436	0.02%	0.002%
51	8.731	2390	2392	2397	rVV2	242	262	0.01%	0.001%
52	8.850	2417	2429	2460	rBV	1034226	1687296	67.02%	9.174%
53	9.107	2505	2509	2517	rVB4	714	760	0.03%	0.004%
54	9.152	2521	2523	2531	rVB4	660	570	0.02%	0.003%
55	9.332	2576	2579	2582	rVV4	346	264	0.01%	0.001%
56	9.516	2632	2636	2639	rBV3	381	314	0.01%	0.002%
57	9.551	2639	2647	2649	rBV3	2072	2111	0.08%	0.011%
58	9.863	2740	2744	2748	rVB2	332	307	0.01%	0.002%
59	9.889	2748	2752	2754	rBV2	409	290	0.01%	0.002%
60	10.008	2785	2789	2796	rBV3	837	1174	0.05%	0.006%
61	10.101	2814	2818	2824	rVB3	458	435	0.02%	0.002%
62	10.140	2824	2830	2835	rBV3	348	421	0.02%	0.002%
63	10.168	2835	2839	2841	rBV2	533	383	0.02%	0.002%
64	10.213	2841	2853	2882	rBV	804409	1256793	49.92%	6.833%
65	10.377	2900	2904	2910	rBV4	688	748	0.03%	0.004%
66	10.458	2925	2929	2934	rBV	423	350	0.01%	0.002%
67	10.487	2934	2938	2942	rBV2	332	260	0.01%	0.001%
68	10.757	3018	3022	3026	rBV2	392	353	0.01%	0.002%
69	10.860	3052	3054	3060	rVB3	1002	639	0.03%	0.003%
70	11.188	3153	3156	3163	rVV5	1079	1310	0.05%	0.007%
71	11.249	3163	3175	3206	rBV	912495	1423716	56.55%	7.741%
72	11.622	3278	3291	3316	rBV	1024671	1613045	64.07%	8.770%
73	11.844	3356	3360	3362	rVB2	572	437	0.02%	0.002%
74	11.860	3362	3365	3371	rBV2	566	484	0.02%	0.003%
75	11.950	3390	3393	3395	rBV	409	267	0.01%	0.001%
76	12.014	3410	3413	3415	rBV	605	324	0.01%	0.002%

Data Path : Z:\voasrv\HPCHEM1\MSVOA_V\Data\VV080122\
 Data File : VV027139.D
 Acq On : 01 Aug 2022 20:54
 Operator : SY/MD
 Sample : N3955-05
 Misc : 5.0mL/MSVOA_V/WATER
 ALS Vial : 18 Sample Multiplier: 1

Instrument :
 MSVOA_V
 ClientSampleId :
 VHBLK001

Integration Parameters: LSCINT.P

Integrator: RTE
 Smoothing : OFF
 Sampling : 1
 Start Thrs: 0.2
 Stop Thrs : 0

Filtering: 5
 Min Area: 0 % of largest Peak
 Max Peaks: 100
 Peak Location: TOP

If leading or trailing edge < 100 prefer < Baseline drop else tangent >
 Peak separation: 5

Method : Z:\voasrv\HPCHEM1\MSVOA_V\Method\SFAMVLM080122WMA.M
 Title : VOC Analysis

77	12.046	3420	3423	3427	rVV2	564	489	0.02%	0.003%
78	12.075	3430	3432	3439	rVV3	659	864	0.03%	0.005%
79	12.104	3439	3441	3446	rVV3	681	467	0.02%	0.003%
80	12.146	3450	3454	3458	rVV3	419	386	0.02%	0.002%
81	12.313	3502	3506	3511	rBV3	364	298	0.01%	0.002%
82	12.554	3579	3581	3588	rBV2	331	331	0.01%	0.002%
83	12.651	3606	3611	3621	rVB6	1705	2487	0.10%	0.014%
84	12.709	3627	3629	3633	rVB2	550	317	0.01%	0.002%
85	12.882	3680	3683	3685	rBV2	682	421	0.02%	0.002%
86	12.956	3703	3706	3709	rVV2	560	316	0.01%	0.002%
87	13.040	3727	3732	3734	rBV3	374	338	0.01%	0.002%
88	13.220	3784	3788	3790	rBV3	637	440	0.02%	0.002%
89	13.271	3797	3804	3814	rVB5	2347	3230	0.13%	0.018%
90	13.512	3871	3879	3887	rBV4	2784	4149	0.16%	0.023%
91	13.741	3946	3950	3951	rBV2	1464	915	0.04%	0.005%
92	14.040	4040	4043	4044	rBV3	509	328	0.01%	0.002%
93	14.053	4045	4047	4055	rVB3	994	880	0.03%	0.005%
94	14.303	4122	4125	4127	rBV3	562	421	0.02%	0.002%
95	14.352	4137	4140	4142	rBV2	452	309	0.01%	0.002%
96	14.506	4185	4188	4190	rBV2	683	318	0.01%	0.002%
97	15.062	4359	4361	4364	rBV3	601	338	0.01%	0.002%
98	15.081	4364	4367	4369	rVV2	551	263	0.01%	0.001%
99	15.114	4375	4377	4382	rVB4	597	342	0.01%	0.002%
100	15.136	4382	4384	4389	rBV5	615	597	0.02%	0.003%

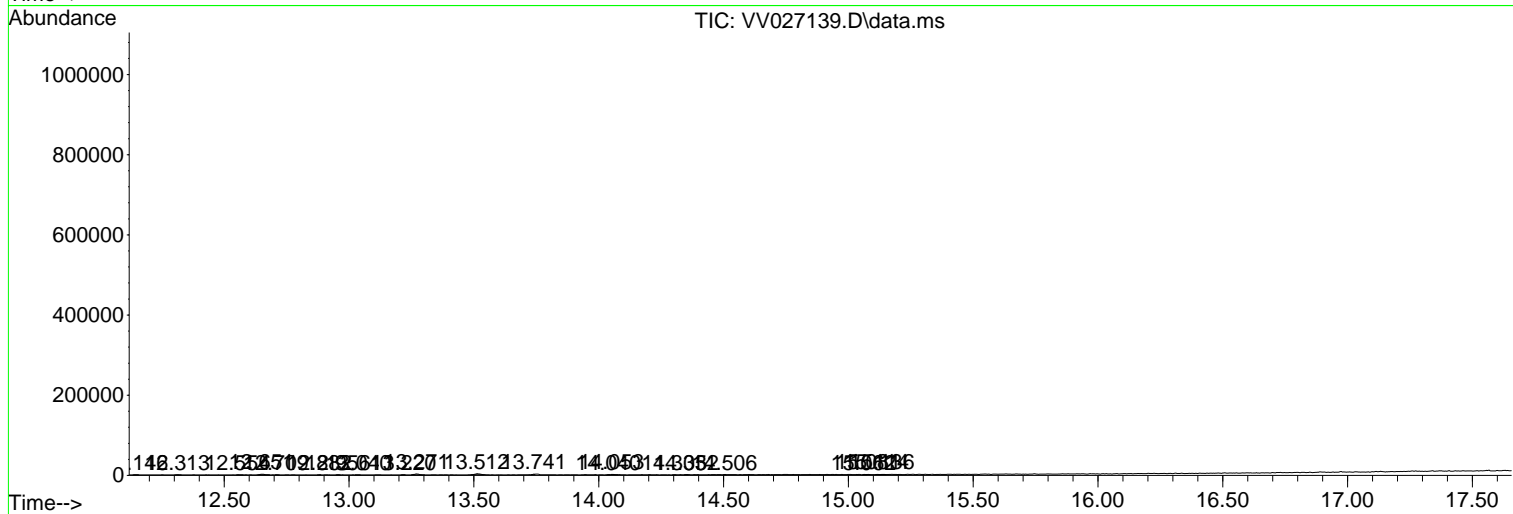
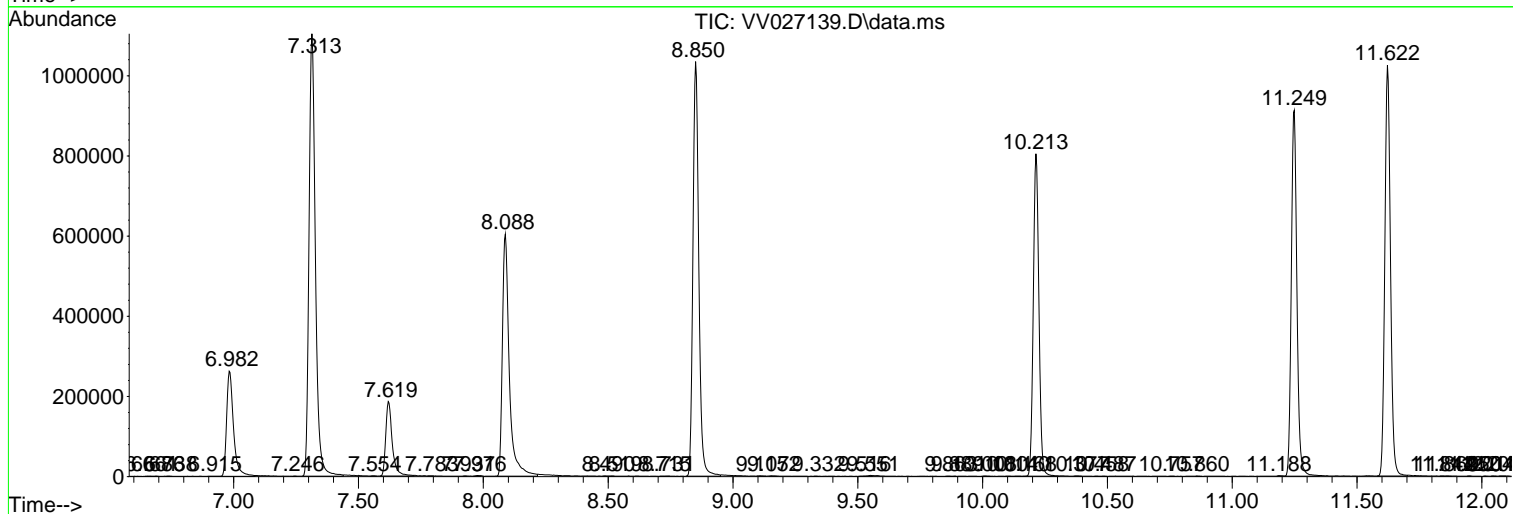
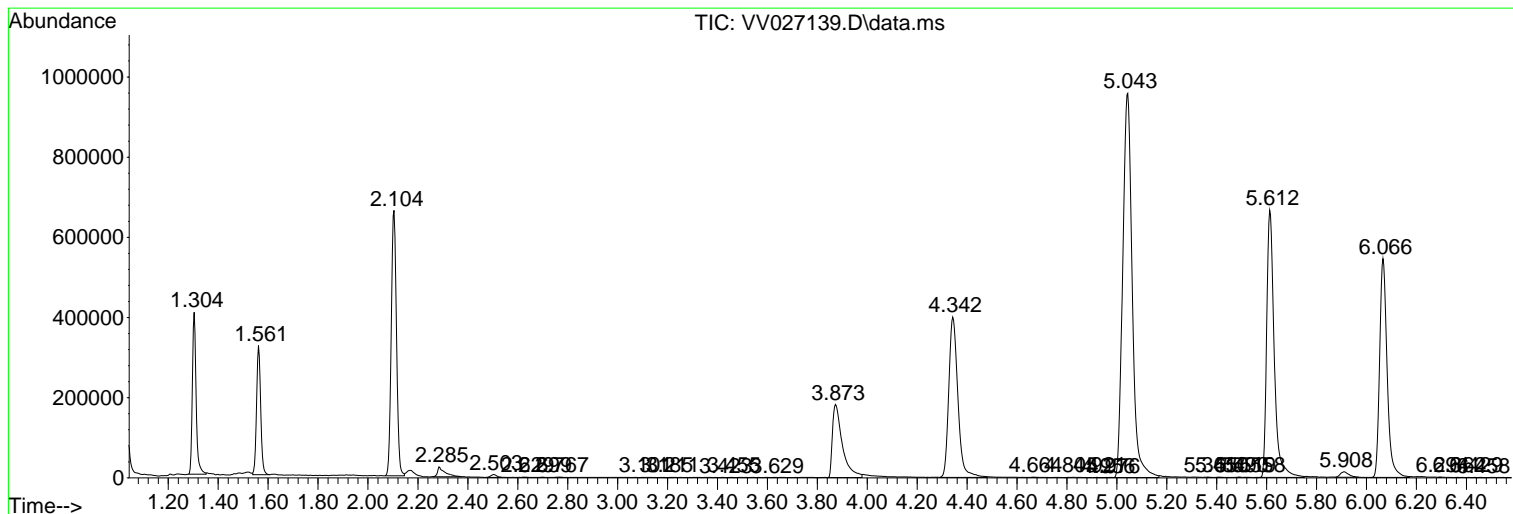
Sum of corrected areas: 18392336

Data Path : Z:\voasrv\HPCHEM1\MSVOA_V\Data\VV080122\
 Data File : VV027139.D
 Acq On : 01 Aug 2022 20:54
 Operator : SY/MD
 Sample : N3955-05
 Misc : 5.0mL/MSVOA_V/WATER
 ALS Vial : 18 Sample Multiplier: 1

Instrument :
 MSVOA_V
 ClientSampleId :
 VHBLK001

Quant Method : Z:\voasrv\HPCHEM1\MSVOA_V\Method\SFAMVLM080122WMA.M
 Quant Title : VOC Analysis

TIC Library : C:\Database\NIST20.L
 TIC Integration Parameters: LSCINT.P



Library Search Compound Report

Data Path : Z:\voasrv\HPCHEM1\MSVOA_V\Data\VV080122\
Data File : VV027139.D
Acq On : 01 Aug 2022 20:54
Operator : SY/MD
Sample : N3955-05
Misc : 5.0mL/MSVOA_V/WATER
ALS Vial : 18 Sample Multiplier: 1

Instrument :
MSVOA_V
ClientSampleId :
VHBLK001

Quant Method : Z:\voasrv\HPCHEM1\MSVOA_V\Method\SFAMVLM080122WMA.M
Quant Title : VOC Analysis

TIC Library : C:\Database\NIST20.L
TIC Integration Parameters: LSCINT.P

No Library Search Compounds Detected

Data Path : Z:\voasrv\HPCHEM1\MSVOA_V\Data\VV080122\
Data File : VV027139.D
Acq On : 01 Aug 2022 20:54
Operator : SY/MD
Sample : N3955-05
Misc : 5.0mL/MSVOA_V/WATER
ALS Vial : 18 Sample Multiplier: 1

Instrument :
MSVOA_V
ClientSampleId :
VHBLK001

Quant Method : Z:\voasrv\HPCHEM1\MSVOA_V\Method\SFAMVLM080122WMA.M
Quant Title : VOC Analysis

TIC Library : C:\Database\NIST20.L
TIC Integration Parameters: LSCINT.P

TIC Top Hit name	RT	EstConc	Units	Response	--Internal Standard--		
					#	RT	Resp Conc
