

Data Path : Z:\voasrv\HPCHEM1\MSVOA_V\Data\VV080524\
 Data File : VV036775.D
 Acq On : 05 Aug 2024 10:19
 Operator : SY/MD
 Sample : VV0805MBL01
 Misc : 5.00mL/MSVOA_V/WATER
 ALS Vial : 3 Sample Multiplier: 1

Instrument :
 MSVOA_V
 ClientSampleId :

Quant Time: Aug 06 03:08:18 2024
 Quant Method : Z:\voasrv\HPCHEM1\MSVOA_V\Method\SFAMVLM080224WMA.M
 Quant Title : VOC Analysis
 QLast Update : Tue Aug 06 02:51:35 2024
 Response via : Initial Calibration

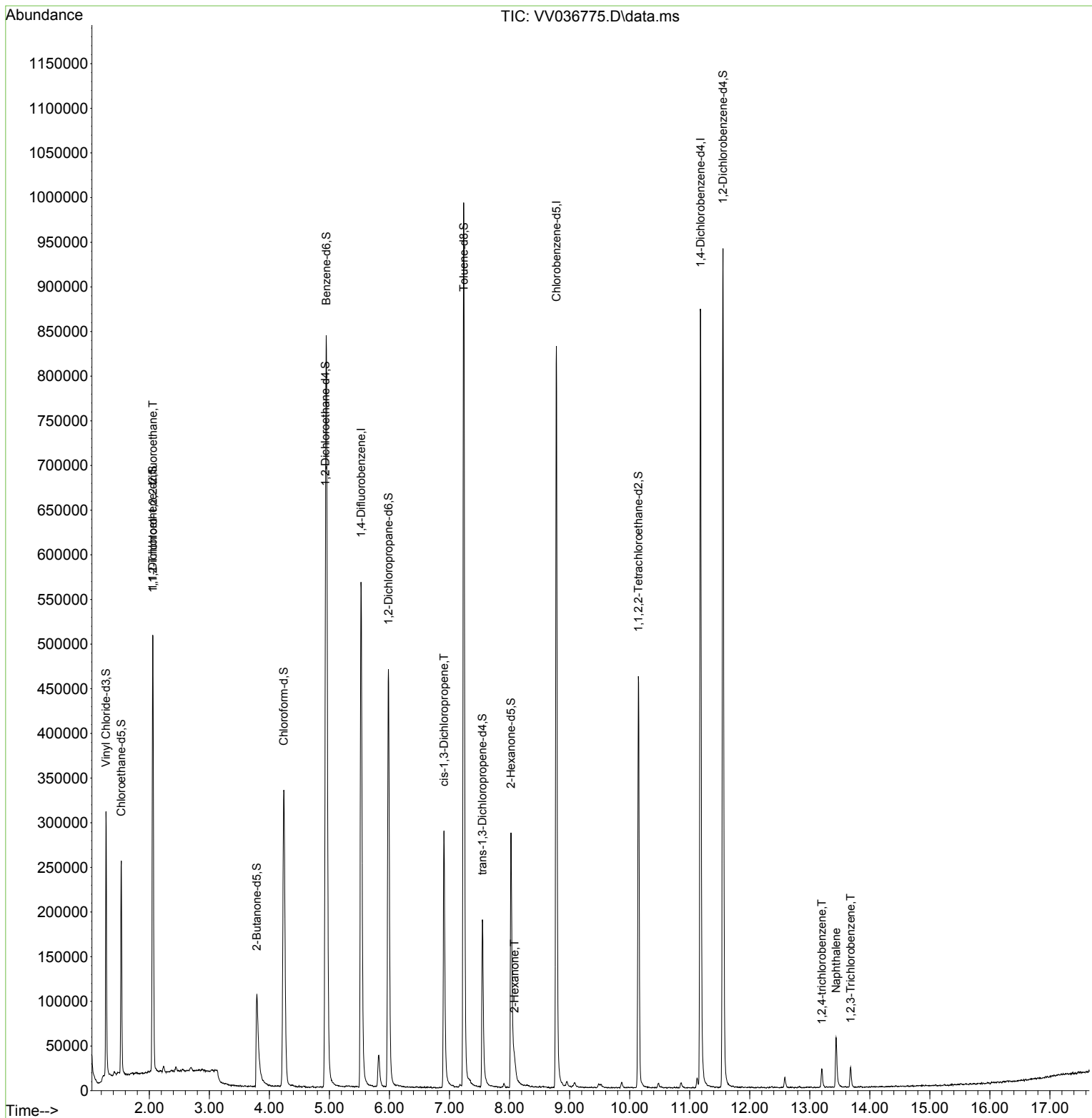
| Compound | R.T. | QIon | Response | Conc | Units | Dev(Min) |
|-------------------------------|---------|----------------|----------|--------|----------|----------|
| ----- | | | | | | |
| Internal Standards | | | | | | |
| 1) 1,4-Difluorobenzene | 5.526 | 114 | 488939 | 50.000 | ug/L | 0.00 |
| 28) Chlorobenzene-d5 | 8.780 | 117 | 455889 | 50.000 | ug/L | 0.00 |
| 58) 1,4-Dichlorobenzene-d4 | 11.181 | 152 | 221745 | 50.000 | ug/L | 0.00 |
| System Monitoring Compounds | | | | | | |
| 4) Vinyl Chloride-d3 | 1.278 | 65 | 193972 | 49.670 | ug/L | 0.00 |
| Spiked Amount | 50.000 | Range 60 - 135 | Recovery | = | 99.340% | |
| 7) Chloroethane-d5 | 1.532 | 69 | 154578 | 50.193 | ug/L | 0.00 |
| Spiked Amount | 50.000 | Range 70 - 130 | Recovery | = | 100.380% | |
| 11) 1,1-Dichloroethene-d2 | 2.056 | 65 | 84360 | 50.501 | ug/L | 0.00 |
| Spiked Amount | 50.000 | Range 60 - 125 | Recovery | = | 101.000% | |
| 21) 2-Butanone-d5 | 3.789 | 46 | 173785 | 83.990 | ug/L | 0.00 |
| Spiked Amount | 100.000 | Range 40 - 130 | Recovery | = | 83.990% | |
| 24) Chloroform-d | 4.240 | 84 | 351070 | 50.095 | ug/L | 0.00 |
| Spiked Amount | 50.000 | Range 70 - 125 | Recovery | = | 100.200% | |
| 26) 1,2-Dichloroethane-d4 | 4.934 | 65 | 229088 | 50.842 | ug/L | 0.00 |
| Spiked Amount | 50.000 | Range 70 - 125 | Recovery | = | 101.680% | |
| 32) Benzene-d6 | 4.950 | 84 | 718934 | 52.212 | ug/L | 0.00 |
| Spiked Amount | 50.000 | Range 70 - 125 | Recovery | = | 104.420% | |
| 36) 1,2-Dichloropropane-d6 | 5.982 | 67 | 229275 | 51.612 | ug/L | 0.00 |
| Spiked Amount | 50.000 | Range 70 - 120 | Recovery | = | 103.220% | |
| 41) Toluene-d8 | 7.236 | 98 | 655132 | 51.867 | ug/L | 0.00 |
| Spiked Amount | 50.000 | Range 80 - 120 | Recovery | = | 103.740% | |
| 43) trans-1,3-Dichloroprop... | 7.548 | 79 | 112779 | 48.783 | ug/L | 0.00 |
| Spiked Amount | 50.000 | Range 60 - 125 | Recovery | = | 97.560% | |
| 47) 2-Hexanone-d5 | 8.024 | 63 | 97219 | 76.114 | ug/L | 0.00 |
| Spiked Amount | 100.000 | Range 45 - 130 | Recovery | = | 76.110% | |
| 56) 1,1,2,2-Tetrachloroeth... | 10.146 | 84 | 230739 | 45.238 | ug/L | 0.00 |
| Spiked Amount | 50.000 | Range 65 - 120 | Recovery | = | 90.480% | |
| 66) 1,2-Dichlorobenzene-d4 | 11.554 | 152 | 233443 | 51.663 | ug/L | 0.00 |
| Spiked Amount | 50.000 | Range 80 - 120 | Recovery | = | 103.320% | |
| ----- | | | | | | |
| Target Compounds | | | | | | Qvalue |
| 10) 1,1,2-Trichloro-1,2,2-... | 2.060 | 101 | 2532 | 0.783 | ug/L # | 26 |
| 39) cis-1,3-Dichloropropene | 6.908 | 75 | 7554 | 1.221 | ug/L # | 58 |
| 48) 2-Hexanone | 8.085 | 43 | 21695 | 6.590 | ug/L # | 72 |
| 70) 1,2,4-trichlorobenzene | 13.201 | 180 | 6666 | 1.411 | ug/L | 97 |
| 71) Naphthalene | 13.438 | 128 | 48522 | 3.202 | ug/L | 100 |
| 72) 1,2,3-Trichlorobenzene | 13.680 | 180 | 6704 | 1.449 | ug/L | 99 |
| ----- | | | | | | |

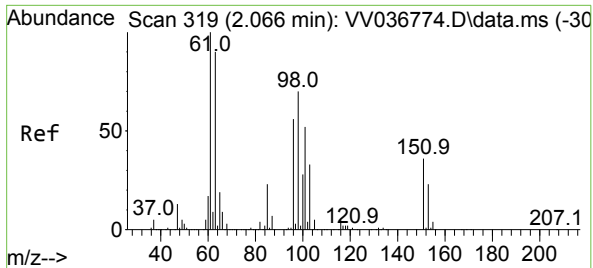
(#) = qualifier out of range (m) = manual integration (+) = signals summed

Data Path : Z:\voasrv\HPCHEM1\MSVOA_V\Data\VV080524\
 Data File : VV036775.D
 Acq On : 05 Aug 2024 10:19
 Operator : SY/MD
 Sample : VV0805MBL01
 Misc : 5.00mL/MSVOA_V/WATER
 ALS Vial : 3 Sample Multiplier: 1

Instrument :
 MSVOA_V
 ClientSampleId :

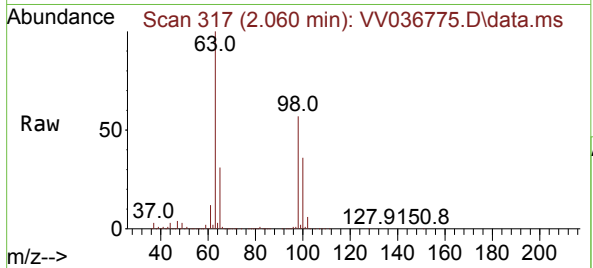
Quant Time: Aug 06 03:08:18 2024
 Quant Method : Z:\voasrv\HPCHEM1\MSVOA_V\Method\SFAMVLM080224WMA.M
 Quant Title : VOC Analysis
 QLast Update : Tue Aug 06 02:51:35 2024
 Response via : Initial Calibration





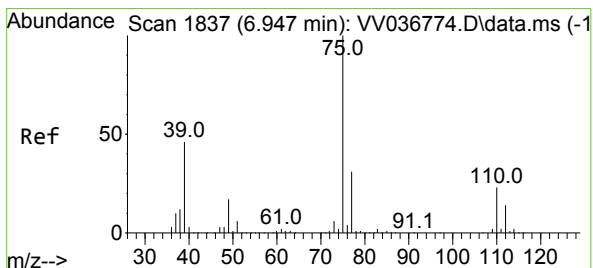
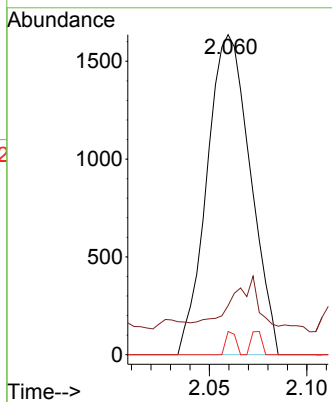
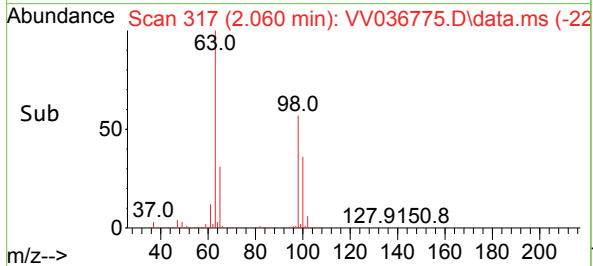
#10
 1,1,2-Trichloro-1,2,2-trifluoroethane
 Concen: 0.783 ug/L
 RT: 2.060 min Scan# 317
 Delta R.T. -0.006 min
 Lab File: VV036775.D
 Acq: 05 Aug 2024 10:19

Instrument : MSVOA_V
 ClientSampleId :



Tgt Ion: 101 Resp: 2532

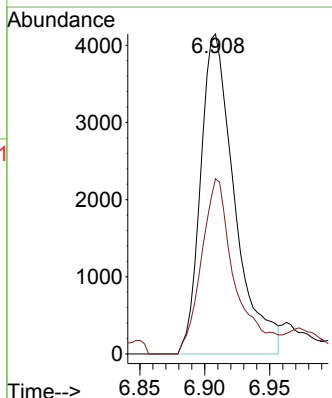
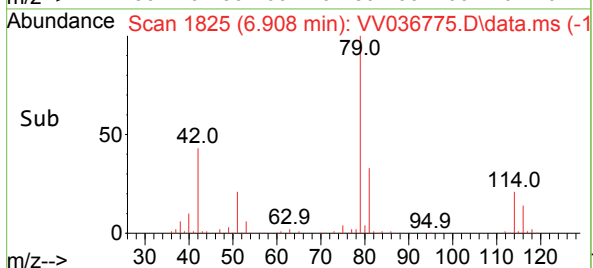
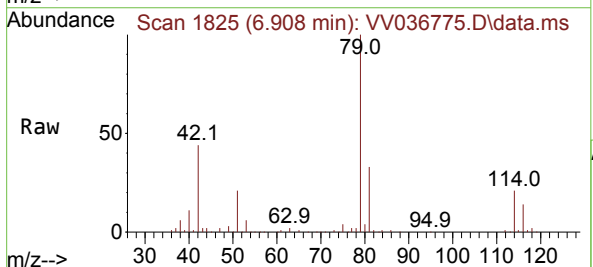
| Ion | Ratio | Lower | Upper |
|-----|-------|-------|-------|
| 101 | 100 | | |
| 85 | 5.2 | 34.6 | 51.8# |
| 151 | 1.7 | 55.9 | 83.9# |

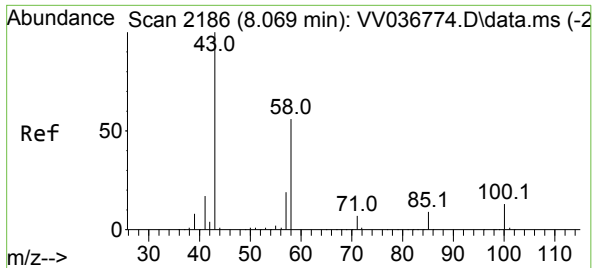


#39
 cis-1,3-Dichloropropene
 Concen: 1.221 ug/L
 RT: 6.908 min Scan# 1825
 Delta R.T. -0.039 min
 Lab File: VV036775.D
 Acq: 05 Aug 2024 10:19

Tgt Ion: 75 Resp: 7554

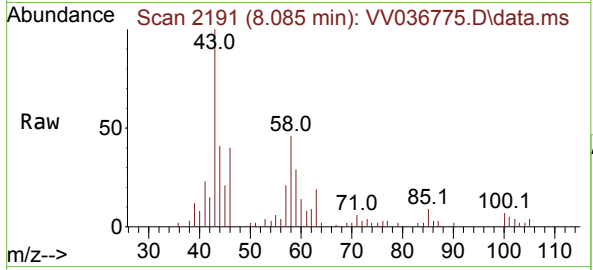
| Ion | Ratio | Lower | Upper |
|-----|-------|-------|-------|
| 75 | 100 | | |
| 77 | 54.8 | 22.2 | 41.2# |





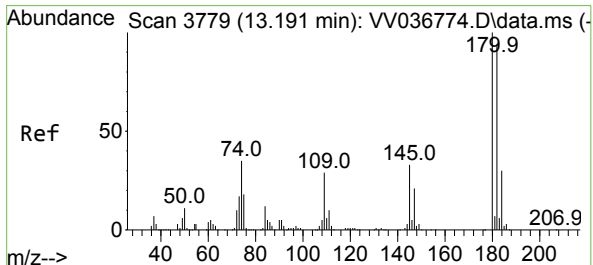
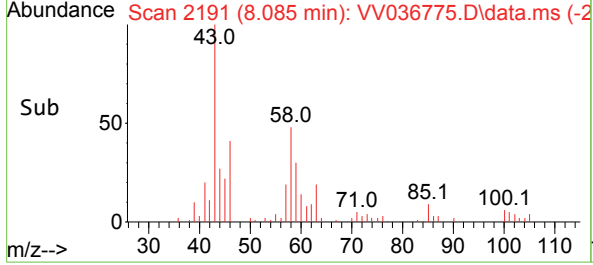
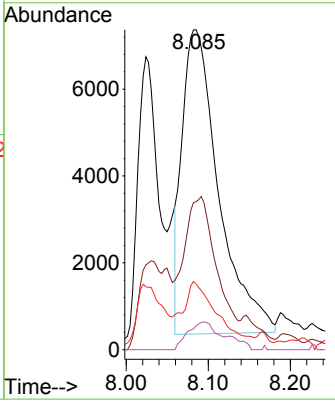
#48
 2-Hexanone
 Concen: 6.590 ug/L
 RT: 8.085 min Scan# 2186
 Delta R.T. 0.016 min
 Lab File: VV036775.D
 Acq: 05 Aug 2024 10:19

Instrument : MSVOA_V
 ClientSampleId :

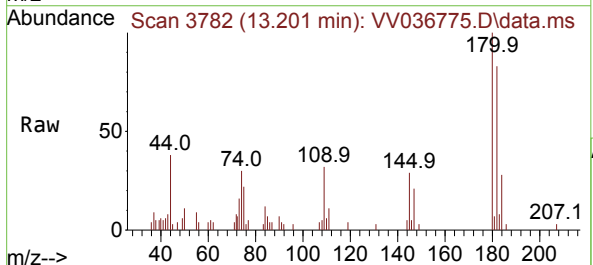


Tgt Ion: 43 Resp: 21695

| Ion | Ratio | Lower | Upper |
|-----|-------|-------|-------|
| 43 | 100 | | |
| 58 | 30.0 | 44.7 | 67.1# |
| 57 | 12.9 | 15.0 | 22.4# |
| 100 | 7.2 | 10.2 | 15.4# |

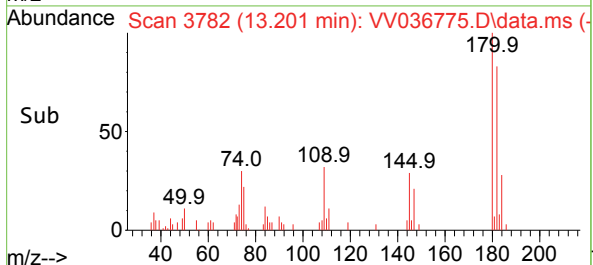
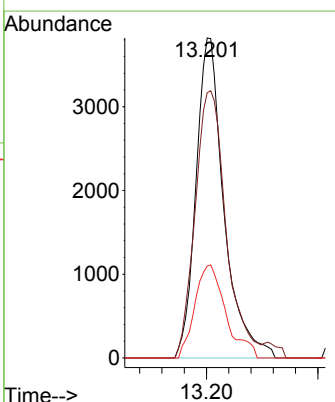


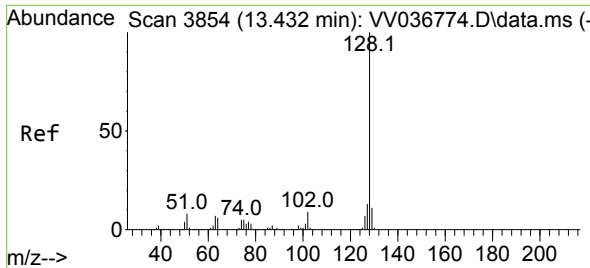
#70
 1,2,4-trichlorobenzene
 Concen: 1.411 ug/L
 RT: 13.201 min Scan# 3782
 Delta R.T. 0.010 min
 Lab File: VV036775.D
 Acq: 05 Aug 2024 10:19



Tgt Ion: 180 Resp: 6666

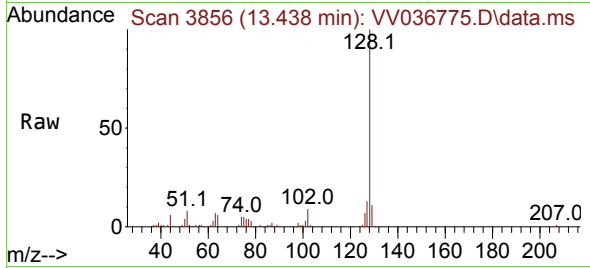
| Ion | Ratio | Lower | Upper |
|-----|-------|-------|-------|
| 180 | 100 | | |
| 182 | 92.1 | 75.1 | 112.7 |
| 145 | 29.4 | 26.5 | 39.7 |



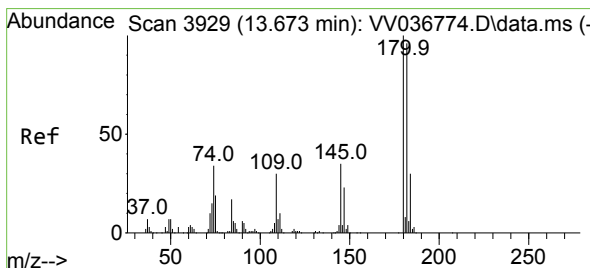
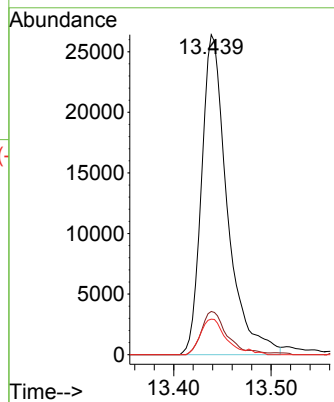
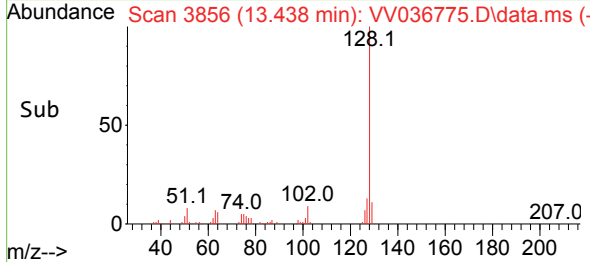


#71
 Naphthalene
 Concen: 3.202 ug/L
 RT: 13.438 min Scan# 3911
 Delta R.T. 0.006 min
 Lab File: VV036775.D
 Acq: 05 Aug 2024 10:19

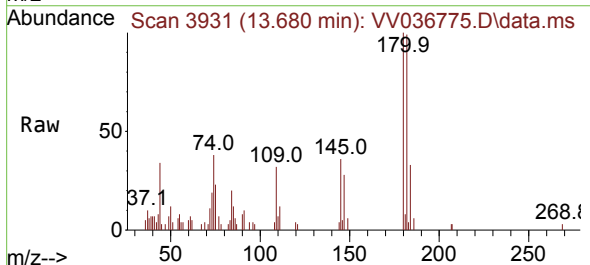
Instrument : MSVOA_V
 ClientSampleId :



Tgt Ion:128 Resp: 48522
 Ion Ratio Lower Upper
 128 100
 127 13.0 10.5 15.7
 129 10.7 8.7 13.1



#72
 1,2,3-Trichlorobenzene
 Concen: 1.449 ug/L
 RT: 13.680 min Scan# 3931
 Delta R.T. 0.006 min
 Lab File: VV036775.D
 Acq: 05 Aug 2024 10:19



Tgt Ion:180 Resp: 6704
 Ion Ratio Lower Upper
 180 100
 182 96.0 76.2 114.2
 145 32.8 27.8 41.6

