

Data Path : Z:\voasrv\HPCHEM1\MSVOA\_V\Data\VW080624\  
 Data File : VW036819.D  
 Acq On : 06 Aug 2024 17:33  
 Operator : SY/MD  
 Sample : P3480-02  
 Misc : 5.00mL/MSVOA\_V/WATER  
 ALS Vial : 23 Sample Multiplier: 1

**Instrument :**  
 MSVOA\_V  
**ClientSampleId :**

Quant Time: Aug 07 05:05:12 2024  
 Quant Method : Z:\voasrv\HPCHEM1\MSVOA\_V\Method\SFAMVLM080224WMA.M  
 Quant Title : VOC Analysis  
 QLast Update : Wed Aug 07 04:57:18 2024  
 Response via : Initial Calibration

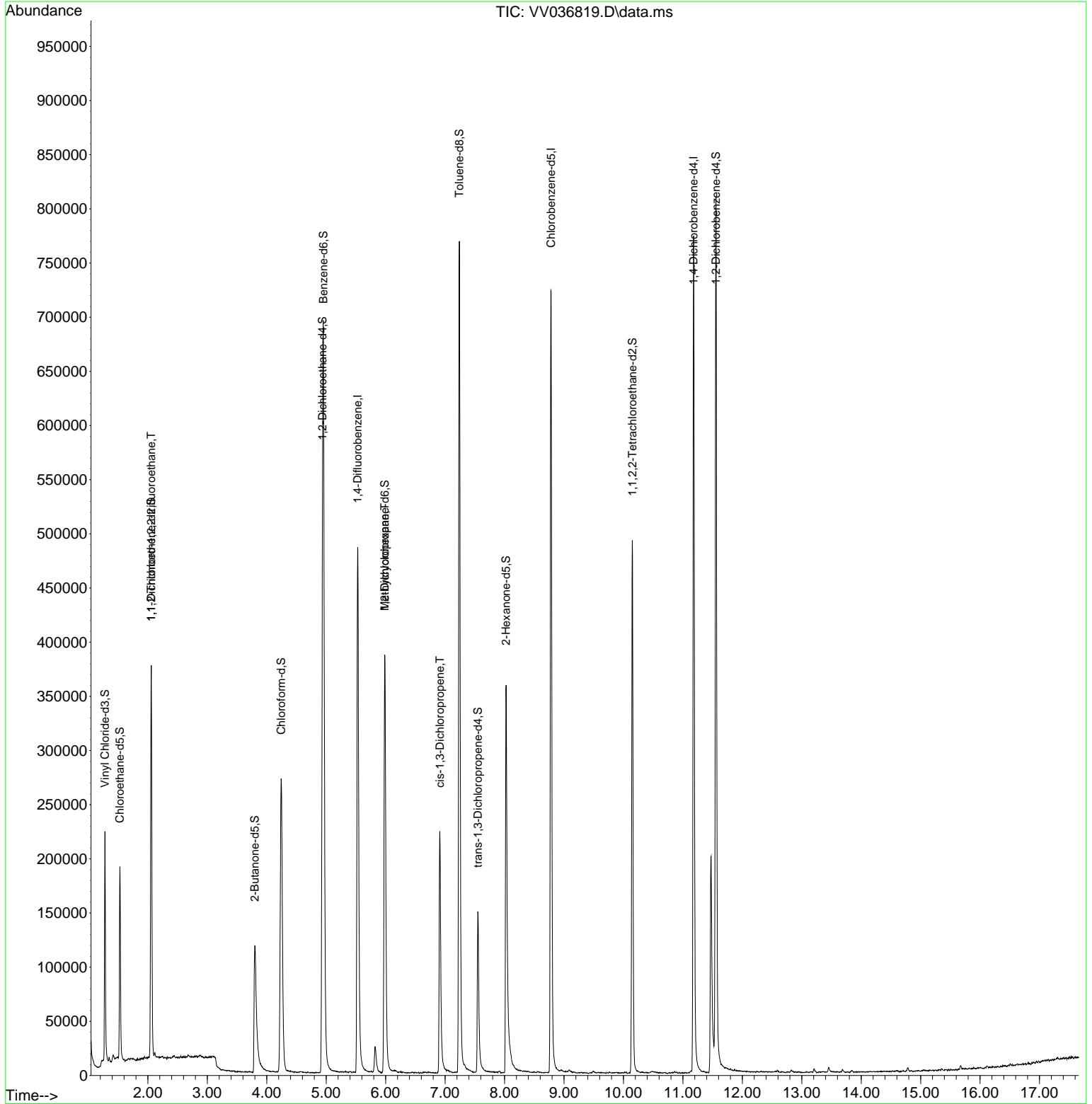
Compound	R.T.	QI on	Response	Conc	Units	Dev(Min)
<b>Internal Standards</b>						
1) 1,4-Difluorobenzene	5.529	114	420797	50.000	ug/L	0.00
28) Chlorobenzene-d5	8.783	117	391588	50.000	ug/L	0.00
58) 1,4-Dichlorobenzene-d4	11.181	152	194072	50.000	ug/L	0.00
<b>System Monitoring Compounds</b>						
4) Vinyl Chloride-d3	1.278	65	135217	40.232	ug/L	0.00
Spike Amount	50.000	Range	60 - 135	Recovery	=	80.460%
7) Chloroethane-d5	1.529	69	118829	44.833	ug/L	0.00
Spike Amount	50.000	Range	70 - 130	Recovery	=	89.660%
11) 1,1-Dichloroethane-d2	2.056	65	60577	42.136	ug/L	0.00
Spike Amount	50.000	Range	60 - 125	Recovery	=	84.280%
21) 2-Butanone-d5	3.799	46	186456	104.707	ug/L	0.00
Spike Amount	100.000	Range	40 - 130	Recovery	=	104.710%
24) Chloroform-d	4.243	84	288091	47.765	ug/L	0.00
Spike Amount	50.000	Range	70 - 125	Recovery	=	95.540%
26) 1,2-Dichloroethane-d4	4.937	65	192139	49.547	ug/L	0.00
Spike Amount	50.000	Range	70 - 125	Recovery	=	99.100%
32) Benzene-d6	4.953	84	572926	48.441	ug/L	0.00
Spike Amount	50.000	Range	70 - 125	Recovery	=	96.880%
36) 1,2-Dichloropropane-d6	5.986	67	194318	50.926	ug/L	0.00
Spike Amount	50.000	Range	70 - 120	Recovery	=	101.860%
41) Toluene-d8	7.239	98	508182	46.840	ug/L	0.00
Spike Amount	50.000	Range	80 - 120	Recovery	=	93.680%
43) trans-1,3-Dichloropropene	7.551	79	87245	43.935	ug/L	0.00
Spike Amount	50.000	Range	60 - 125	Recovery	=	87.860%
47) 2-Hexanone-d5	8.024	63	124608	113.577	ug/L	0.00
Spike Amount	100.000	Range	45 - 130	Recovery	=	113.580%
56) 1,1,2,2-Tetrachloroethane	10.149	84	237650	54.243	ug/L	0.00
Spike Amount	50.000	Range	65 - 120	Recovery	=	108.480%
66) 1,2-Dichlorobenzene-d4	11.558	152	199203	50.372	ug/L	0.00
Spike Amount	50.000	Range	80 - 120	Recovery	=	100.740%
<b>Target Compounds</b>						
10) 1,1,2-Trichloro-1,2,2-trifluoroethane	2.056	101	2035	0.731	ug/L #	27
35) Methylcyclohexane	5.986	83	46184	8.867	ug/L #	18
39) cis-1,3-Dichloropropene	6.912	75	5791	1.090	ug/L #	71

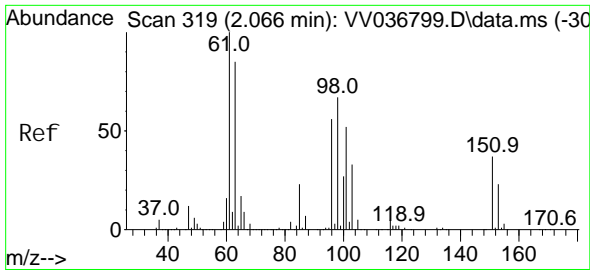
(#) = qualifier out of range (m) = manual integration (+) = signals summed

Data Path : Z:\voasrv\HPCHEM1\MSVOA\_V\Data\VV080624\  
 Data File : VV036819.D  
 Acq On : 06 Aug 2024 17:33  
 Operator : SY/MD  
 Sample : P3480-02  
 Misc : 5.00mL/MSVOA\_V/WATER  
 ALS Vial : 23 Sample Multiplier: 1

Instrument :  
 MSVOA\_V  
 ClientSampleId :

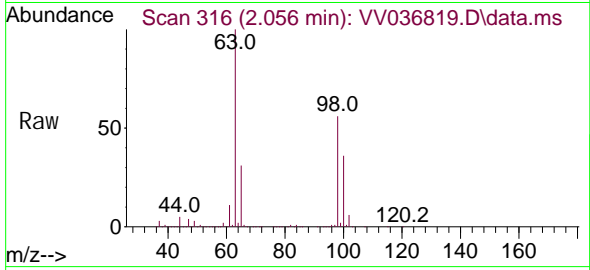
Quant Time: Aug 07 05:05:12 2024  
 Quant Method : Z:\voasrv\HPCHEM1\MSVOA\_V\Method\SFAMVLM080224WMA.M  
 Quant Title : VOC Analysis  
 QLast Update : Wed Aug 07 04:57:18 2024  
 Response via : Initial Calibration



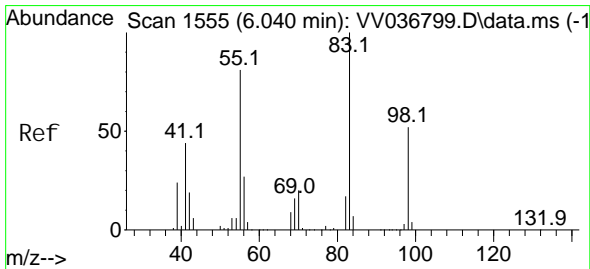
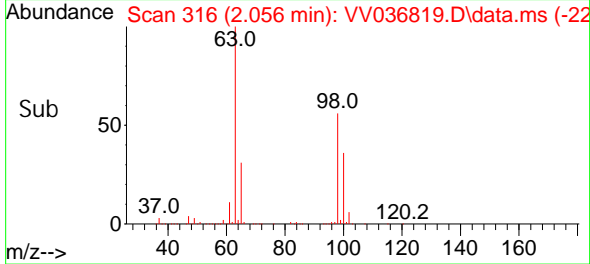
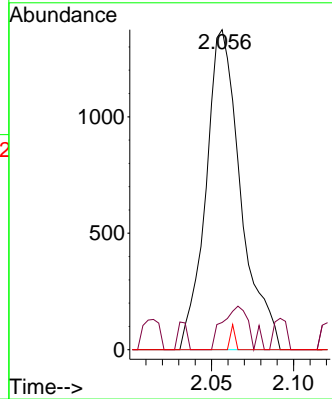


#10  
 1, 1, 2-Tri chl oro-1, 2, 2-tri fl uoroethane  
 Concen: 0.731 ug/L  
 RT: 2.056 min Scan# 31  
 Del ta R. T. -0.010 min  
 Lab File: VV036819.D  
 Acq: 06 Aug 2024 17:33

Instrument :  
 MSVOA\_V  
 ClientSampleId :

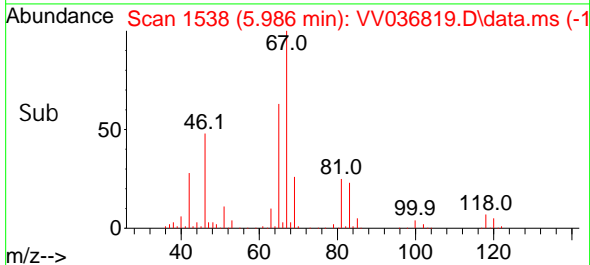
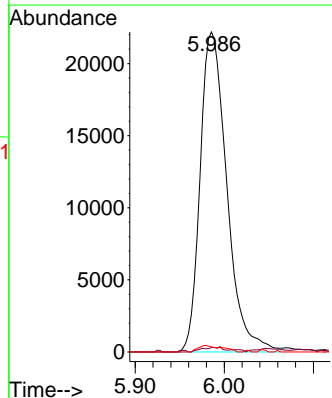
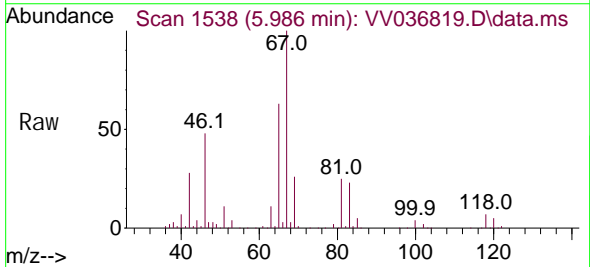


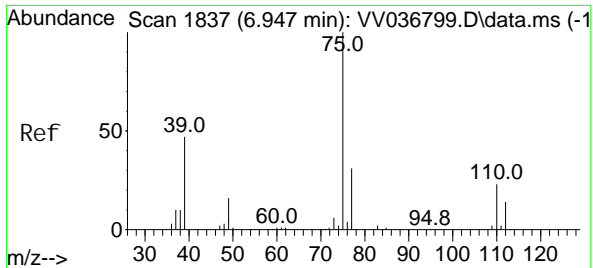
Tgt Ion: 101 Resp: 2035  
 Ion Ratio Lower Upper  
 101 100  
 85 9.5 34.6 51.8#  
 151 0.0 55.9 83.9#



#35  
 Methyl cycl ohexane  
 Concen: 8.867 ug/L  
 RT: 5.986 min Scan# 1538  
 Del ta R. T. -0.055 min  
 Lab File: VV036819.D  
 Acq: 06 Aug 2024 17:33

Tgt Ion: 83 Resp: 46184  
 Ion Ratio Lower Upper  
 83 100  
 55 0.4 62.3 93.5#  
 98 0.0 38.7 58.1#





#39  
 ci s-1, 3-Di chl oropropene  
 Concen: 1.090 ug/L  
 RT: 6.912 min Scan# 1837  
 Del ta R.T. -0.035 min  
 Lab File: VV036819.D  
 Acq: 06 Aug 2024 17:33

Instrument : MSVOA\_V  
 ClientSampleId :

Tgt Ion: 75 Resp: 5791  
 Ion Ratio Lower Upper  
 75 100  
 77 47.9 22.2 41.2#

