

Data Path : Z:\voasrv\HPCHEM1\MSVOA\_V\Data\VV080924\  
 Data File : VV036869.D  
 Acq On : 09 Aug 2024 11:52  
 Operator : SY/MD  
 Sample : P3480-18RE  
 Misc : 5.00mL/MSVOA\_V/WATER  
 ALS Vial : 7 Sample Multiplier: 1

Instrument :  
 MSVOA\_V  
 ClientSampleId :  
 E0AB5RE

Integration Parameters: LSCINT.P

Integrator: RTE  
 Smoothing : OFF  
 Sampling : 1  
 Start Thrs : 0.2  
 Stop Thrs : 0

Filtering: 5  
 Min Area: 0 % of largest Peak  
 Max Peaks: 100  
 Peak Location: TOP

If leading or trailing edge < 100 prefer < Baseline drop else tangent >  
 Peak separation: 5

Method : Z:\voasrv\HPCHEM1\MSVOA\_V\Method\SFAMVLM080224WMA.M  
 Title : VOC Analysis

Signal : TIC: VV036869.D\data.ms

peak #	R.T. min	first scan	max scan	last scan	PK TY	peak height	corr. area	corr. % max.	% of total
1	1.278	67	74	91	rBV	275831	292431	15.93%	2.586%
2	1.532	145	153	168	rVB	221452	256798	13.99%	2.271%
3	2.059	307	317	330	rBV	441779	637230	34.72%	5.634%
4	3.278	693	696	699	rVB3	1077	653	0.04%	0.006%
5	3.735	835	838	841	rBV3	778	535	0.03%	0.005%
6	3.796	848	857	886	rBV	97275	269699	14.69%	2.385%
7	4.243	980	996	1025	rBV	278711	715953	39.01%	6.330%
8	4.612	1109	1111	1114	rBV4	701	444	0.02%	0.004%
9	4.645	1118	1121	1125	rBV3	402	417	0.02%	0.004%
10	4.699	1134	1138	1141	rVB4	1034	882	0.05%	0.008%
11	4.764	1155	1158	1162	rBV4	762	610	0.03%	0.005%
12	4.879	1189	1194	1196	rBV6	484	451	0.02%	0.004%
13	4.950	1201	1216	1247	rBV2	728271	1835388	100.00%	16.229%
14	5.204	1292	1295	1298	rVB3	990	562	0.03%	0.005%
15	5.326	1331	1333	1339	rBV4	582	406	0.02%	0.004%
16	5.352	1339	1341	1346	rVB4	1034	806	0.04%	0.007%
17	5.378	1347	1349	1353	rVB3	817	486	0.03%	0.004%
18	5.452	1370	1372	1377	rVB3	961	568	0.03%	0.005%
19	5.484	1377	1382	1385	rBV4	999	1016	0.06%	0.009%
20	5.532	1385	1397	1432	rBV	207287	437152	23.82%	3.865%
21	5.683	1440	1444	1447	rVB5	1388	1185	0.06%	0.010%
22	5.706	1449	1451	1456	rVV4	753	706	0.04%	0.006%
23	5.741	1460	1462	1469	rVB8	1081	1004	0.05%	0.009%
24	5.776	1469	1473	1477	rVB6	889	650	0.04%	0.006%
25	5.825	1477	1488	1507	rBV3	22809	55027	3.00%	0.487%
26	5.985	1522	1538	1578	rBV	400206	835158	45.50%	7.384%
27	6.272	1625	1627	1633	rVB5	549	457	0.02%	0.004%
28	6.345	1645	1650	1652	rBV2	550	439	0.02%	0.004%
29	6.397	1663	1666	1668	rBV3	872	450	0.02%	0.004%
30	6.448	1679	1682	1686	rVV5	535	420	0.02%	0.004%
31	6.551	1712	1714	1717	rVB4	784	420	0.02%	0.004%
32	6.654	1740	1746	1747	rBV4	1311	1104	0.06%	0.010%
33	6.712	1759	1764	1768	rBV4	919	753	0.04%	0.007%
34	6.744	1772	1774	1778	rVB5	666	450	0.02%	0.004%
35	6.911	1815	1826	1864	rBV	228201	443876	24.18%	3.925%
36	7.130	1891	1894	1901	rVB5	965	962	0.05%	0.009%

Data Path : Z:\voasrv\HPCHEM1\MSVOA\_V\Data\VV080924\  
 Data File : VV036869.D  
 Acq On : 09 Aug 2024 11:52  
 Operator : SY/MD  
 Sample : P3480-18RE  
 Misc : 5.00mL/MSVOA\_V/WATER  
 ALS Vial : 7 Sample Multiplier: 1

Instrument :  
 MSVOA\_V  
 ClientSampleId :  
 E0AB5RE

Integration Parameters: LSCINT.P

Integrator: RTE  
 Smoothing : OFF  
 Sampling : 1  
 Start Thrs : 0.2  
 Stop Thrs : 0

Filtering: 5  
 Min Area: 0 % of largest Peak  
 Max Peaks: 100  
 Peak Location: TOP

If leading or trailing edge < 100 prefer < Baseline drop else tangent >  
 Peak separation: 5

Method : Z:\voasrv\HPCHEM1\MSVOA\_V\Method\SFAMVLM080224WMA.M  
 Title : VOC Analysis

37	7.172	1902	1907	1909	rBV5	896	775	0.04%	0.007%
38	7.239	1915	1928	1959	rBV	835662	1486492	80.99%	13.144%
39	7.493	2003	2007	2008	rBV3	1012	754	0.04%	0.007%
40	7.551	2016	2025	2053	rBV	148845	271723	14.80%	2.403%
41	7.895	2129	2132	2134	rBV3	703	507	0.03%	0.004%
42	7.905	2134	2135	2140	rVV4	815	604	0.03%	0.005%
43	8.027	2164	2173	2215	rBV2	270707	593595	32.34%	5.249%
44	8.342	2269	2271	2276	rVB6	985	486	0.03%	0.004%
45	8.548	2330	2335	2338	rBV4	1003	1009	0.05%	0.009%
46	8.783	2395	2408	2436	rBV	309978	535272	29.16%	4.733%
47	9.017	2478	2481	2484	rVB3	862	521	0.03%	0.005%
48	9.059	2491	2494	2498	rBV5	675	587	0.03%	0.005%
49	9.162	2523	2526	2529	rVB2	656	509	0.03%	0.005%
50	9.278	2558	2562	2565	rVB3	521	417	0.02%	0.004%
51	9.326	2573	2577	2580	rVB5	957	674	0.04%	0.006%
52	9.378	2588	2593	2596	rBV3	629	472	0.03%	0.004%
53	9.410	2600	2603	2607	rVB5	623	447	0.02%	0.004%
54	9.484	2623	2626	2632	rBV5	665	701	0.04%	0.006%
55	9.532	2639	2641	2645	rVB4	650	394	0.02%	0.003%
56	9.564	2645	2651	2652	rBV3	1666	1398	0.08%	0.012%
57	9.953	2768	2772	2776	rBV4	1010	897	0.05%	0.008%
58	9.976	2776	2779	2781	rBV2	723	505	0.03%	0.004%
59	10.149	2818	2833	2853	rBV	432154	685714	37.36%	6.063%
60	10.570	2958	2964	2967	rBV8	843	895	0.05%	0.008%
61	10.631	2980	2983	2985	rBV3	551	481	0.03%	0.004%
62	10.686	2996	3000	3004	rBV4	448	438	0.02%	0.004%
63	10.709	3004	3007	3011	rVB4	981	821	0.04%	0.007%
64	10.738	3011	3016	3018	rBV2	834	877	0.05%	0.008%
65	10.795	3029	3034	3038	rBV4	443	515	0.03%	0.005%
66	11.030	3102	3107	3108	rBV3	625	490	0.03%	0.004%
67	11.059	3114	3116	3120	rBV3	605	471	0.03%	0.004%
68	11.130	3132	3138	3139	rBV5	1476	1135	0.06%	0.010%
69	11.185	3144	3155	3183	rBV	326100	539223	29.38%	4.768%
70	11.390	3213	3219	3222	rBV4	834	705	0.04%	0.006%
71	11.442	3232	3235	3237	rBV2	544	437	0.02%	0.004%
72	11.477	3237	3246	3260	rBV	37686	80687	4.40%	0.713%
73	11.554	3260	3270	3293	rVB	799566	1278293	69.65%	11.303%
74	11.969	3397	3399	3403	rBV5	785	682	0.04%	0.006%
75	12.075	3430	3432	3436	rBV3	615	442	0.02%	0.004%
76	12.120	3443	3446	3448	rBV2	863	597	0.03%	0.005%

Data Path : Z:\voasrv\HPCHEM1\MSVOA\_V\Data\VV080924\  
 Data File : VV036869.D  
 Acq On : 09 Aug 2024 11:52  
 Operator : SY/MD  
 Sample : P3480-18RE  
 Misc : 5.00mL/MSVOA\_V/WATER  
 ALS Vial : 7 Sample Multiplier: 1

Instrument :  
 MSVOA\_V  
 ClientSampleId :  
 E0AB5RE

Integration Parameters: LSCINT.P

Integrator: RTE  
 Smoothing : OFF  
 Sampling : 1  
 Start Thrs: 0.2  
 Stop Thrs : 0

Filtering: 5  
 Min Area: 0 % of largest Peak  
 Max Peaks: 100  
 Peak Location: TOP

If leading or trailing edge < 100 prefer < Baseline drop else tangent >  
 Peak separation: 5

Method : Z:\voasrv\HPCHEM1\MSVOA\_V\Method\SFAMVLM080224WMA.M  
 Title : VOC Analysis

77	12.239	3482	3483	3488	rVB2	533	434	0.02%	0.004%
78	12.265	3488	3491	3494	rBV2	681	411	0.02%	0.004%
79	12.320	3504	3508	3510	rBV3	898	520	0.03%	0.005%
80	12.567	3582	3585	3587	rVV3	740	442	0.02%	0.004%
81	12.586	3587	3591	3600	rVB9	1520	1981	0.11%	0.018%
82	12.914	3690	3693	3698	rVB4	999	896	0.05%	0.008%
83	12.975	3706	3712	3715	rBV4	1112	1054	0.06%	0.009%
84	13.017	3721	3725	3726	rBV2	787	469	0.03%	0.004%
85	13.085	3741	3746	3749	rBV3	783	632	0.03%	0.006%
86	13.210	3781	3785	3786	rBV3	1538	1195	0.07%	0.011%
87	13.336	3821	3824	3827	rVV3	533	432	0.02%	0.004%
88	13.429	3850	3853	3854	rVV2	894	519	0.03%	0.005%
89	13.455	3856	3861	3872	rVB8	3249	5466	0.30%	0.048%
90	13.635	3913	3917	3921	rBV3	1190	933	0.05%	0.008%
91	13.660	3923	3925	3927	rBV3	867	545	0.03%	0.005%
92	13.760	3951	3956	3959	rBV5	821	718	0.04%	0.006%
93	13.802	3966	3969	3974	rBV3	1107	1022	0.06%	0.009%
94	14.072	4050	4053	4059	rBV4	867	872	0.05%	0.008%
95	14.210	4093	4096	4098	rBV4	770	573	0.03%	0.005%
96	14.332	4132	4134	4139	rVB3	1013	773	0.04%	0.007%
97	14.364	4139	4144	4146	rBV3	716	657	0.04%	0.006%
98	14.390	4149	4152	4156	rBV4	808	669	0.04%	0.006%
99	14.442	4165	4168	4171	rVB4	1040	641	0.03%	0.006%
100	15.313	4437	4439	4443	rBV3	981	614	0.03%	0.005%

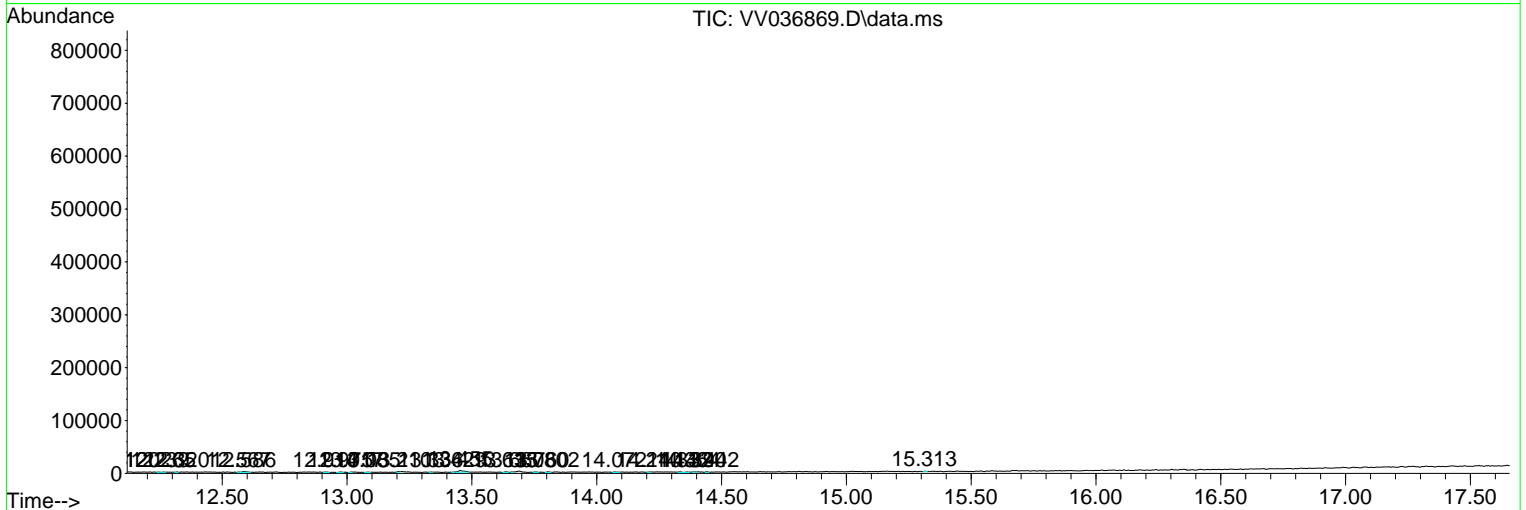
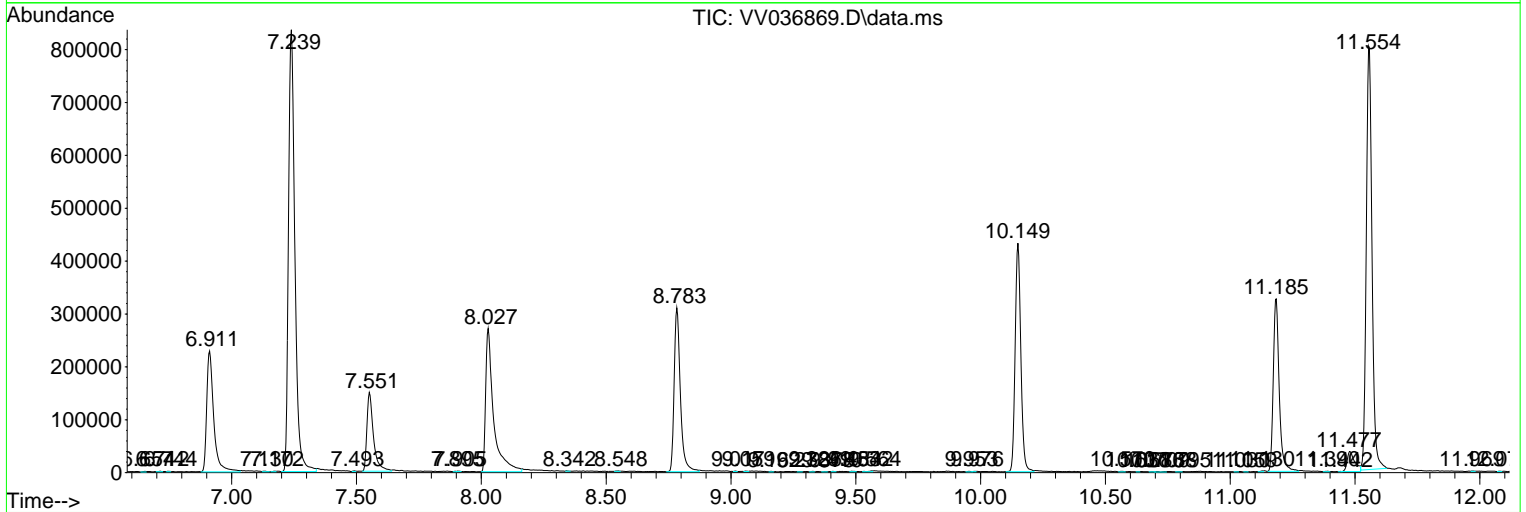
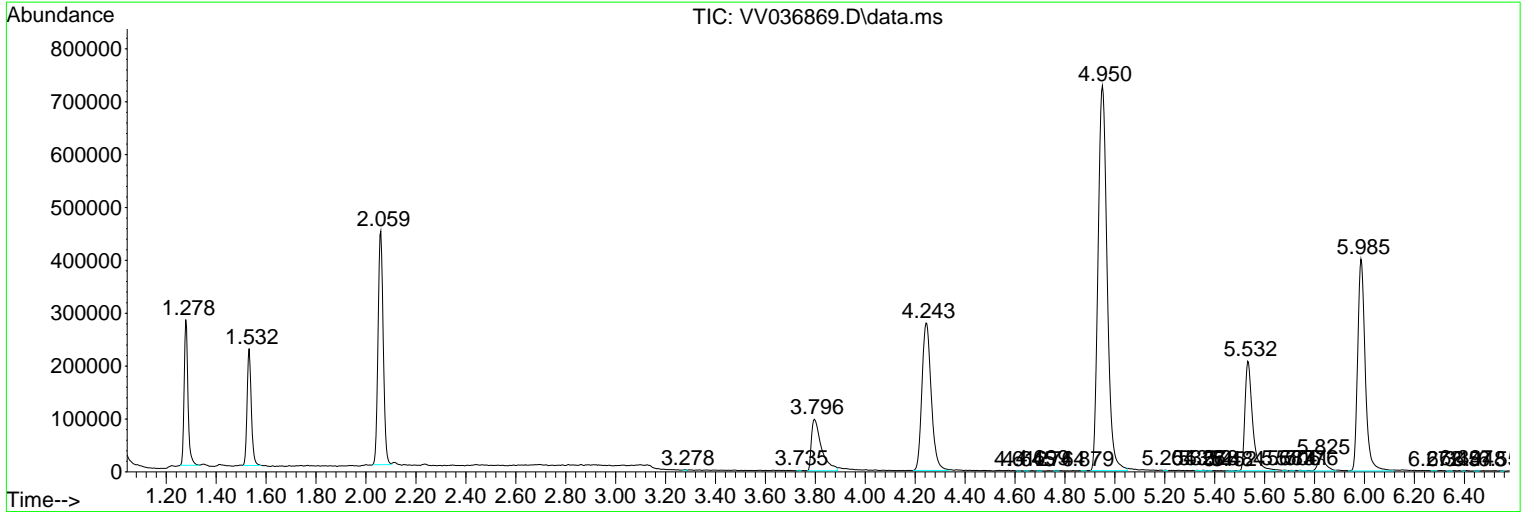
Sum of corrected areas: 11309658

Data Path : Z:\voasrv\HPCHEM1\MSVOA\_V\Data\VV080924\  
 Data File : VV036869.D  
 Acq On : 09 Aug 2024 11:52  
 Operator : SY/MD  
 Sample : P3480-18RE  
 Misc : 5.00mL/MSVOA\_V/WATER  
 ALS Vial : 7 Sample Multiplier: 1

Instrument :  
 MSVOA\_V  
 ClientSampleId :  
 E0AB5RE

Quant Method : Z:\voasrv\HPCHEM1\MSVOA\_V\Method\SFAMVLM080224WMA.M  
 Quant Title : VOC Analysis

TIC Library : C:\Database\NIST20.L  
 TIC Integration Parameters: LSCINT.P



Data Path : Z:\voasrv\HPCHEM1\MSVOA\_V\Data\VV080924\  
 Data File : VV036869.D  
 Acq On : 09 Aug 2024 11:52  
 Operator : SY/MD  
 Sample : P3480-18RE  
 Misc : 5.00mL/MSVOA\_V/WATER  
 ALS Vial : 7 Sample Multiplier: 1

Instrument :  
 MSVOA\_V  
 ClientSampleId :  
 E0AB5RE

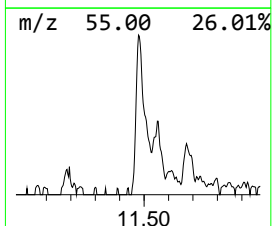
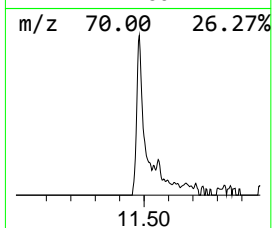
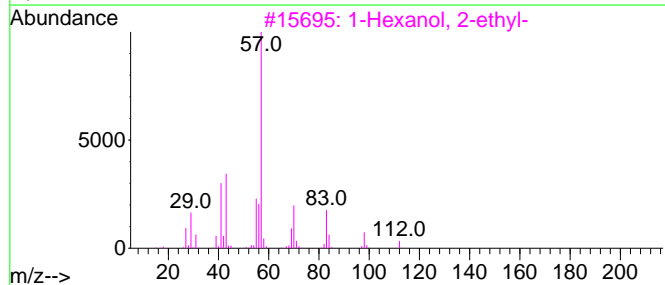
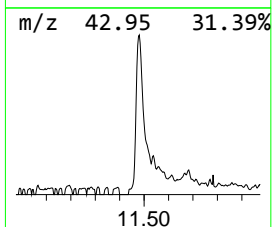
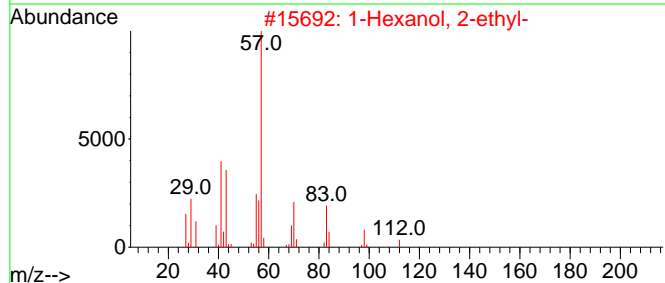
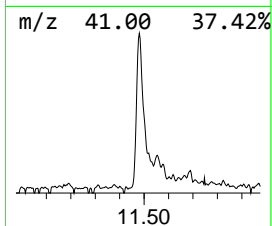
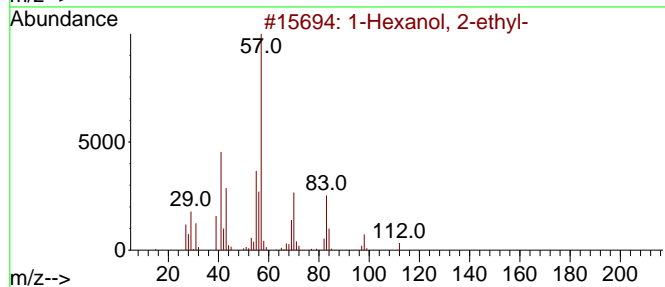
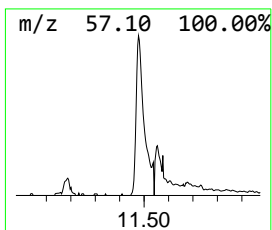
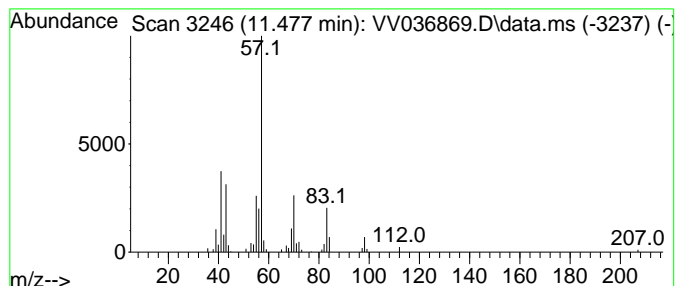
Quant Method : Z:\voasrv\HPCHEM1\MSVOA\_V\Method\SFAMVLM080224WMA.M  
 Quant Title : VOC Analysis

TIC Library : C:\Database\NIST20.L  
 TIC Integration Parameters: LSCINT.P

\*\*\*\*\*  
 Peak Number 3 1-Hexanol, 2-ethyl- Concentration Rank 2

R.T.	EstConc	Area	Relative to ISTD	R.T.
11.477	7.48 ug/L	80687	1,4-Dichlorobenzene-d4	11.185

Hit#	of 5	Tentative ID	MW	MolForm	CAS#	Qual
1		1-Hexanol, 2-ethyl-	130	C8H18O	000104-76-7	90
2		1-Hexanol, 2-ethyl-	130	C8H18O	000104-76-7	86
3		1-Hexanol, 2-ethyl-	130	C8H18O	000104-76-7	78
4		1-Hexanol, 2-ethyl-	130	C8H18O	000104-76-7	72
5		1-Hexanol, 2-ethyl-	130	C8H18O	000104-76-7	64



Data Path : Z:\voasrv\HPCHEM1\MSVOA\_V\Data\VV080924\  
Data File : VV036869.D  
Acq On : 09 Aug 2024 11:52  
Operator : SY/MD  
Sample : P3480-18RE  
Misc : 5.00mL/MSVOA\_V/WATER  
ALS Vial : 7 Sample Multiplier: 1

Instrument :  
MSVOA\_V  
ClientSampleId :  
E0AB5RE

Quant Method : Z:\voasrv\HPCHEM1\MSVOA\_V\Method\SFAMVLM080224WMA.M  
Quant Title : VOC Analysis

TIC Library : C:\Database\NIST20.L  
TIC Integration Parameters: LSCINT.P

TIC Top Hit name	RT	EstConc	Units	Response	--Internal Standard--			
					#	RT	Resp	Conc
1-Hexanol, 2-et...	11.477	7.5	ug/L	80687	3	11.185	539223	50.0