

Data Path : Z:\voasrv\HPCHEM1\MSVOA_V\Data\VV082824\
 Data File : VV037133.D
 Acq On : 28 Aug 2024 16:13
 Operator : SY/MD
 Sample : P3692-06DL 10X
 Misc : 5.00mL/MSVOA_V/WATER
 ALS Vial : 1 Sample Multiplier: 1

Instrument :
 MSVOA_V
 ClientSampleId :
 E1K38DL

Integration Parameters: LSCINT.P

Integrator: RTE
 Smoothing : OFF
 Sampling : 1
 Start Thrs: 0.2
 Stop Thrs : 0

Filtering: 5
 Min Area: 0 % of largest Peak
 Max Peaks: 100
 Peak Location: TOP

If leading or trailing edge < 100 prefer < Baseline drop else tangent >
 Peak separation: 5

Method : Z:\voasrv\HPCHEM1\MSVOA_V\Method\SFAMVLM082624WMA.M
 Title : VOC Analysis

Signal : TIC: VV037133.D\data.ms

peak #	R.T. min	first scan	max scan	last scan	PK TY	peak height	corr. area	corr. % max.	% of total
1	1.172	35	41	51	rBV	30391	44433	1.77%	0.231%
2	1.282	68	75	92	rBV2	932482	1036273	41.17%	5.396%
3	1.532	146	153	169	rVB	308481	372898	14.82%	1.942%
4	2.056	307	316	333	rBV	671899	957237	38.03%	4.985%
5	3.304	701	704	706	rVB3	1944	1078	0.04%	0.006%
6	3.317	706	708	711	rBV3	1359	1078	0.04%	0.006%
7	3.503	763	766	768	rBV3	895	720	0.03%	0.004%
8	3.561	780	784	789	rBV8	1474	1376	0.05%	0.007%
9	3.619	800	802	806	rBV4	645	300	0.01%	0.002%
10	3.693	823	825	828	rVB5	996	464	0.02%	0.002%
11	3.722	831	834	838	rVB5	1007	531	0.02%	0.003%
12	3.745	838	841	842	rBV2	758	380	0.02%	0.002%
13	3.802	848	859	889	rBV2	277118	763592	30.34%	3.976%
14	4.243	982	996	1022	rBV	403266	991840	39.41%	5.165%
15	4.490	1071	1073	1074	rBV	994	397	0.02%	0.002%
16	4.632	1110	1117	1121	rBV9	2193	2542	0.10%	0.013%
17	4.687	1131	1134	1137	rBV4	1474	1043	0.04%	0.005%
18	4.722	1143	1145	1149	rVB4	979	554	0.02%	0.003%
19	4.767	1154	1159	1161	rBV4	1552	1109	0.04%	0.006%
20	4.950	1201	1216	1247	rBV2	1008098	2516876	100.00%	13.106%
21	5.275	1314	1317	1318	rBV3	1552	942	0.04%	0.005%
22	5.452	1369	1372	1377	rBV6	1640	1438	0.06%	0.007%
23	5.529	1385	1396	1426	rBV	641805	1329198	52.81%	6.921%
24	5.986	1525	1538	1568	rBV	554748	1145846	45.53%	5.967%
25	6.285	1629	1631	1632	rBV2	764	308	0.01%	0.002%
26	6.294	1632	1634	1636	rVV3	1535	690	0.03%	0.004%
27	6.333	1644	1646	1650	rBV4	1578	1072	0.04%	0.006%
28	6.410	1667	1670	1672	rBV3	931	669	0.03%	0.003%
29	6.494	1693	1696	1697	rBV3	996	549	0.02%	0.003%
30	6.526	1703	1706	1709	rBV4	1151	858	0.03%	0.004%
31	6.574	1715	1721	1723	rBV5	1002	1018	0.04%	0.005%
32	6.687	1754	1756	1761	rBV4	1083	1003	0.04%	0.005%
33	6.732	1767	1770	1773	rBV3	1346	896	0.04%	0.005%
34	6.748	1773	1775	1779	rBV4	1310	912	0.04%	0.005%
35	6.786	1784	1787	1792	rBV5	1298	1037	0.04%	0.005%
36	6.850	1803	1807	1810	rBV5	754	609	0.02%	0.003%

Data Path : Z:\voasrv\HPCHEM1\MSVOA_V\Data\VV082824\
 Data File : VV037133.D
 Acq On : 28 Aug 2024 16:13
 Operator : SY/MD
 Sample : P3692-06DL 10X
 Misc : 5.00mL/MSVOA_V/WATER
 ALS Vial : 1 Sample Multiplier: 1

Instrument :
 MSVOA_V
 ClientSampleId :
 E1K38DL

Integration Parameters: LSCINT.P
 Integrator: RTE
 Smoothing : OFF
 Sampling : 1
 Start Thrs : 0.2
 Stop Thrs : 0
 Filtering: 5
 Min Area: 0 % of largest Peak
 Max Peaks: 100
 Peak Location: TOP

If leading or trailing edge < 100 prefer < Baseline drop else tangent >
 Peak separation: 5

Method : Z:\voasrv\HPCHEM1\MSVOA_V\Method\SFAMVLM082624WMA.M
 Title : VOC Analysis

37	6.908	1816	1825	1847	rBV	286702	537767	21.37%	2.800%
38	7.240	1917	1928	1966	rBV	1135594	2035507	80.87%	10.599%
39	7.551	2016	2025	2049	rBV	189566	351490	13.97%	1.830%
40	8.024	2164	2172	2205	rBV	461695	930159	36.96%	4.844%
41	8.780	2397	2407	2443	rBV	996486	1644121	65.32%	8.561%
42	9.217	2542	2543	2549	rVB6	1524	969	0.04%	0.005%
43	9.336	2578	2580	2582	rBV3	848	369	0.01%	0.002%
44	9.445	2612	2614	2617	rBV5	947	592	0.02%	0.003%
45	9.516	2631	2636	2639	rBV5	1913	1699	0.07%	0.009%
46	9.609	2662	2665	2668	rBV4	1251	1068	0.04%	0.006%
47	9.661	2679	2681	2684	rBV4	944	659	0.03%	0.003%
48	9.821	2727	2731	2732	rBV3	1427	728	0.03%	0.004%
49	9.847	2737	2739	2743	rVV5	1068	672	0.03%	0.003%
50	9.895	2752	2754	2757	rBV4	1053	695	0.03%	0.004%
51	9.944	2767	2769	2770	rBV2	492	156	0.01%	0.001%
52	9.982	2779	2781	2783	rBV2	1044	491	0.02%	0.003%
53	9.995	2783	2785	2786	rVB2	974	334	0.01%	0.002%
54	10.011	2786	2790	2794	rBV4	1113	968	0.04%	0.005%
55	10.034	2794	2797	2798	rBV3	433	224	0.01%	0.001%
56	10.069	2806	2808	2812	rBV5	871	653	0.03%	0.003%
57	10.149	2821	2833	2856	rBV	675194	1089328	43.28%	5.672%
58	10.346	2891	2894	2896	rBV4	1531	1127	0.04%	0.006%
59	10.436	2919	2922	2923	rBV2	660	382	0.02%	0.002%
60	10.471	2930	2933	2934	rBV3	1053	542	0.02%	0.003%
61	10.635	2981	2984	2985	rBV2	602	317	0.01%	0.002%
62	10.670	2991	2995	2997	rBV4	853	527	0.02%	0.003%
63	10.683	2997	2999	3001	rVB3	606	189	0.01%	0.001%
64	10.696	3001	3003	3004	rVB2	748	253	0.01%	0.001%
65	10.709	3004	3007	3008	rBV3	865	457	0.02%	0.002%
66	10.728	3012	3013	3017	rVB2	893	395	0.02%	0.002%
67	10.747	3017	3019	3022	rBV4	1186	567	0.02%	0.003%
68	10.760	3022	3023	3024	rBV	674	211	0.01%	0.001%
69	10.786	3029	3031	3036	rVB4	1926	1437	0.06%	0.007%
70	10.857	3048	3053	3055	rBV6	1485	996	0.04%	0.005%
71	10.866	3055	3056	3057	rVV	909	277	0.01%	0.001%
72	10.879	3057	3060	3064	rVV5	1286	1148	0.05%	0.006%
73	10.899	3064	3066	3069	rVV4	1183	711	0.03%	0.004%
74	10.931	3073	3076	3079	rVV4	1084	635	0.03%	0.003%
75	10.947	3079	3081	3084	rVB4	771	339	0.01%	0.002%
76	10.969	3084	3088	3091	rBV5	1707	1209	0.05%	0.006%

Data Path : Z:\voasrv\HPCHEM1\MSVOA_V\Data\VV082824\
 Data File : VV037133.D
 Acq On : 28 Aug 2024 16:13
 Operator : SY/MD
 Sample : P3692-06DL 10X
 Misc : 5.00mL/MSVOA_V/WATER
 ALS Vial : 1 Sample Multiplier: 1

Instrument :
 MSVOA_V
 ClientSampleId :
 E1K38DL

Integration Parameters: LSCINT.P

Integrator: RTE
 Smoothing : OFF Filtering: 5
 Sampling : 1 Min Area: 0 % of largest Peak
 Start Thrs: 0.2 Max Peaks: 100
 Stop Thrs : 0 Peak Location: TOP

If leading or trailing edge < 100 prefer < Baseline drop else tangent >
 Peak separation: 5

Method : Z:\voasrv\HPCHEM1\MSVOA_V\Method\SFAMVLM082624WMA.M
 Title : VOC Analysis

77	11.011	3097	3101	3103	rBV4	1224	890	0.04%	0.005%
78	11.072	3118	3120	3122	rVB3	885	387	0.02%	0.002%
79	11.088	3123	3125	3127	rBV3	706	401	0.02%	0.002%
80	11.182	3142	3154	3193	rBV	1002332	1620527	64.39%	8.438%
81	11.458	3238	3240	3242	rBV3	1382	670	0.03%	0.003%
82	11.554	3257	3270	3298	rBV	1110721	1774689	70.51%	9.241%
83	11.931	3384	3387	3389	rBV3	1055	753	0.03%	0.004%
84	11.989	3402	3405	3408	rBV4	1969	1449	0.06%	0.008%
85	12.101	3438	3440	3442	rBV4	787	361	0.01%	0.002%
86	12.214	3471	3475	3477	rBV5	1302	977	0.04%	0.005%
87	12.317	3506	3507	3513	rBV3	964	814	0.03%	0.004%
88	12.349	3515	3517	3522	rVV5	1002	684	0.03%	0.004%
89	12.400	3531	3533	3536	rBV4	598	394	0.02%	0.002%
90	12.419	3536	3539	3540	rBV3	892	468	0.02%	0.002%
91	12.480	3556	3558	3561	rVB4	1238	561	0.02%	0.003%
92	12.535	3572	3575	3577	rBV4	1568	956	0.04%	0.005%
93	12.635	3604	3606	3608	rVB3	1510	614	0.02%	0.003%
94	12.657	3608	3613	3618	rVB8	1212	1346	0.05%	0.007%
95	12.706	3623	3628	3630	rBV5	1274	1230	0.05%	0.006%
96	12.757	3642	3644	3648	rVB4	1362	792	0.03%	0.004%
97	12.976	3707	3712	3713	rBV4	1750	1070	0.04%	0.006%
98	13.095	3746	3749	3751	rBV3	1512	1016	0.04%	0.005%
99	13.278	3804	3806	3807	rBV	736	293	0.01%	0.002%
100	13.882	3992	3994	3996	rBV3	1150	578	0.02%	0.003%

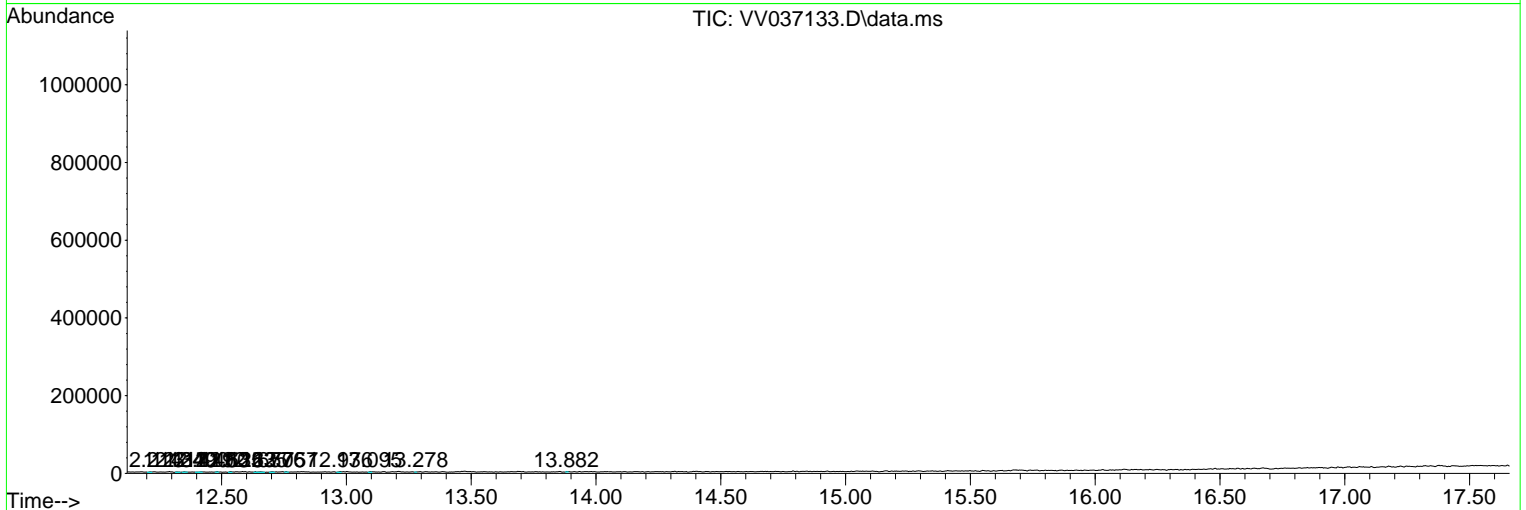
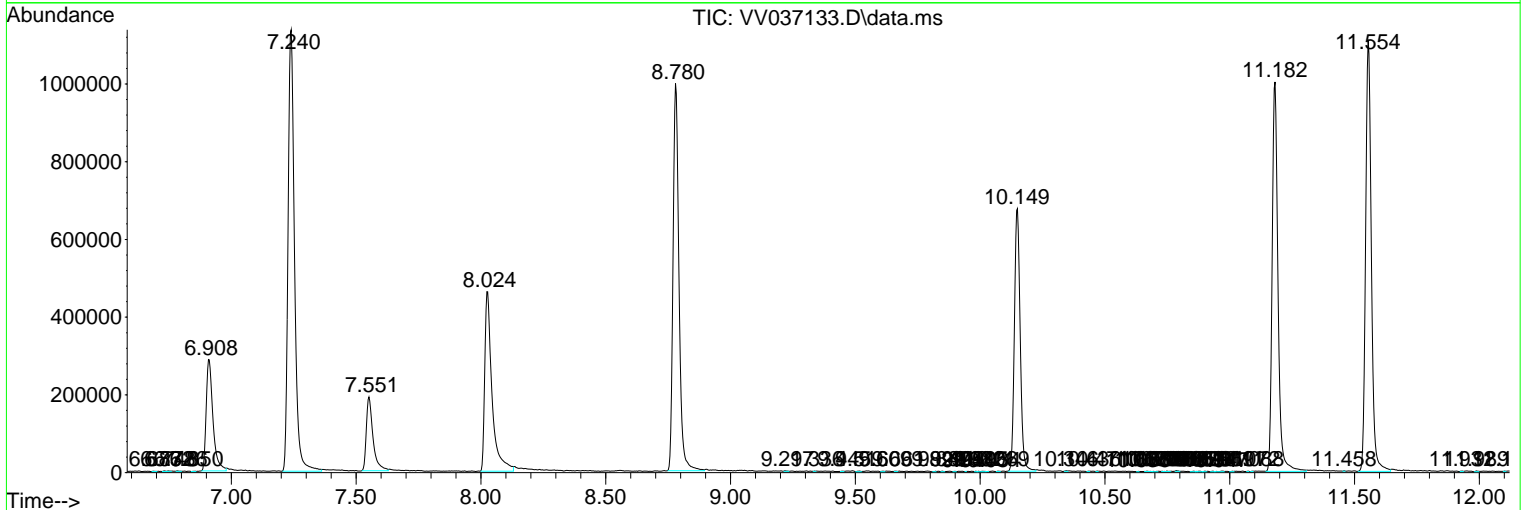
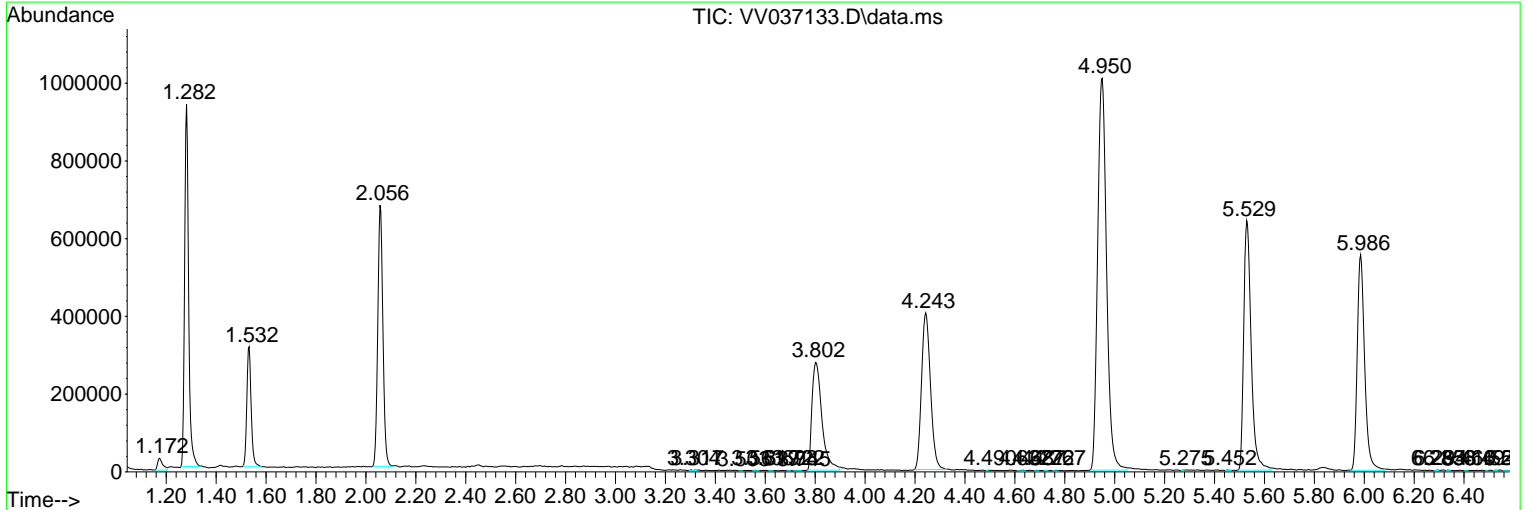
Sum of corrected areas: 19204054

Data Path : Z:\voasrv\HPCHEM1\MSVOA_V\Data\VV082824\
 Data File : VV037133.D
 Acq On : 28 Aug 2024 16:13
 Operator : SY/MD
 Sample : P3692-06DL 10X
 Misc : 5.00mL/MSVOA_V/WATER
 ALS Vial : 1 Sample Multiplier: 1

Instrument :
 MSVOA_V
 ClientSampleId :
 E1K38DL

Quant Method : Z:\voasrv\HPCHEM1\MSVOA_V\Method\SFAMVLM082624WMA.M
 Quant Title : VOC Analysis

TIC Library : C:\Database\NIST20.L
 TIC Integration Parameters: LSCINT.P



Library Search Compound Report

Data Path : Z:\voasrv\HPCHEM1\MSVOA_V\Data\VV082824\
Data File : VV037133.D
Acq On : 28 Aug 2024 16:13
Operator : SY/MD
Sample : P3692-06DL 10X
Misc : 5.00mL/MSVOA_V/WATER
ALS Vial : 1 Sample Multiplier: 1

Instrument :
MSVOA_V
ClientSampleId :
E1K38DL

Quant Method : Z:\voasrv\HPCHEM1\MSVOA_V\Method\SFAMVLM082624WMA.M
Quant Title : VOC Analysis

TIC Library : C:\Database\NIST20.L
TIC Integration Parameters: LSCINT.P

No Library Search Compounds Detected

Data Path : Z:\voasrv\HPCHEM1\MSVOA_V\Data\VV082824\
Data File : VV037133.D
Acq On : 28 Aug 2024 16:13
Operator : SY/MD
Sample : P3692-06DL 10X
Misc : 5.00mL/MSVOA_V/WATER
ALS Vial : 1 Sample Multiplier: 1

Instrument :
MSVOA_V
ClientSampleId :
E1K38DL

Quant Method : Z:\voasrv\HPCHEM1\MSVOA_V\Method\SFAMVLM082624WMA.M
Quant Title : VOC Analysis

TIC Library : C:\Database\NIST20.L
TIC Integration Parameters: LSCINT.P

TIC Top Hit name	RT	EstConc	Units	Response	--Internal Standard--		
					#	RT	Resp Conc
