

Data Path : Z:\voasrv\HPCHEM1\MSVOA\_V\Data\VV090624\  
 Data File : VV037217.D  
 Acq On : 06 Sep 2024 12:03  
 Operator : SY/MD  
 Sample : P3843-02  
 Misc : 5.00mL/MSVOA\_V/WATER  
 ALS Vial : 1 Sample Multiplier: 1

Instrument :  
 MSVOA\_V  
 ClientSampleId :  
 BHJM5

Integration Parameters: LSCINT.P

Integrator: RTE  
 Smoothing : OFF  
 Sampling : 1  
 Start Thrs: 0.2  
 Stop Thrs : 0

Filtering: 5  
 Min Area: 0 % of largest Peak  
 Max Peaks: 100  
 Peak Location: TOP

If leading or trailing edge < 100 prefer < Baseline drop else tangent >  
 Peak separation: 5

Method : Z:\voasrv\HPCHEM1\MSVOA\_V\Method\SFAMVLM082624WMA.M  
 Title : VOC Analysis

Signal : TIC: VV037217.D\data.ms

peak #	R.T. min	first scan	max scan	last scan	PK TY	peak height	corr. area	corr. % max.	% of total
1	1.114	17	23	34	rVB	49258	54876	2.49%	0.336%
2	1.175	37	42	50	rBV3	6243	10944	0.50%	0.067%
3	1.278	67	74	89	rBV	292671	313863	14.23%	1.920%
4	1.532	145	153	168	rVB	255684	299389	13.58%	1.831%
5	1.831	240	246	261	rVB2	16698	25283	1.15%	0.155%
6	2.060	307	317	327	rBV	516653	745710	33.82%	4.561%
7	2.111	328	333	347	rVB	63609	99461	4.51%	0.608%
8	3.307	701	705	708	rBV6	1852	1732	0.08%	0.011%
9	3.523	767	772	773	rBV4	1219	945	0.04%	0.006%
10	3.548	777	780	785	rVB6	1297	1116	0.05%	0.007%
11	3.574	785	788	792	rBV4	967	996	0.05%	0.006%
12	3.619	797	802	805	rVB6	1133	747	0.03%	0.005%
13	3.658	810	814	817	rBV5	868	747	0.03%	0.005%
14	3.796	846	857	885	rBV	101339	287558	13.04%	1.759%
15	4.127	953	960	963	rBV5	1642	1937	0.09%	0.012%
16	4.246	980	997	1027	rBV3	387098	1185886	53.78%	7.254%
17	4.500	1074	1076	1080	rVB5	1552	1052	0.05%	0.006%
18	4.619	1111	1113	1117	rVV5	1287	901	0.04%	0.006%
19	4.645	1117	1121	1123	rVV4	914	775	0.04%	0.005%
20	4.786	1160	1165	1167	rBV5	1208	1074	0.05%	0.007%
21	4.809	1170	1172	1175	rVB4	1918	953	0.04%	0.006%
22	4.847	1180	1184	1186	rBV4	1011	785	0.04%	0.005%
23	4.889	1194	1197	1200	rBV4	1128	870	0.04%	0.005%
24	4.950	1200	1216	1243	rBV2	869050	2205110	100.00%	13.488%
25	5.333	1332	1335	1339	rVV7	1703	1120	0.05%	0.007%
26	5.448	1366	1371	1374	rBV7	1054	986	0.04%	0.006%
27	5.529	1385	1396	1426	rBV	577314	1201898	54.51%	7.352%
28	5.828	1478	1489	1504	rBV4	16240	36641	1.66%	0.224%
29	5.899	1504	1511	1523	rBV2	30815	70353	3.19%	0.430%
30	5.982	1526	1537	1561	rVB	506631	1052672	47.74%	6.439%
31	6.352	1649	1652	1656	rBV5	1179	846	0.04%	0.005%
32	6.378	1657	1660	1664	rVV6	1723	1103	0.05%	0.007%
33	6.532	1705	1708	1710	rBV4	1214	877	0.04%	0.005%
34	6.580	1719	1723	1725	rVB2	1216	769	0.03%	0.005%
35	6.628	1737	1738	1743	rBV4	1071	866	0.04%	0.005%
36	6.760	1775	1779	1782	rBV5	1272	1210	0.05%	0.007%

Data Path : Z:\voasrv\HPCHEM1\MSVOA\_V\Data\VV090624\  
 Data File : VV037217.D  
 Acq On : 06 Sep 2024 12:03  
 Operator : SY/MD  
 Sample : P3843-02  
 Misc : 5.00mL/MSVOA\_V/WATER  
 ALS Vial : 1 Sample Multiplier: 1

Instrument :  
 MSVOA\_V  
 ClientSampleId :  
 BHJM5

Integration Parameters: LSCINT.P

Integrator: RTE  
 Smoothing : OFF  
 Sampling : 1  
 Start Thrs: 0.2  
 Stop Thrs : 0

Filtering: 5  
 Min Area: 0 % of largest Peak  
 Max Peaks: 100  
 Peak Location: TOP

If leading or trailing edge < 100 prefer < Baseline drop else tangent >  
 Peak separation: 5

Method : Z:\voasrv\HPCHEM1\MSVOA\_V\Method\SFAMVLM082624WMA.M  
 Title : VOC Analysis

37	6.812	1790	1795	1797	rBV4	1237	986	0.04%	0.006%
38	6.911	1815	1826	1862	rBV	253527	512922	23.26%	3.137%
39	7.239	1917	1928	1964	rBV	968496	1735929	78.72%	10.618%
40	7.455	1992	1995	1996	rBV2	1369	759	0.03%	0.005%
41	7.551	2016	2025	2046	rBV	169586	312102	14.15%	1.909%
42	7.944	2145	2147	2150	rBV3	1237	812	0.04%	0.005%
43	7.989	2157	2161	2163	rVB4	1310	809	0.04%	0.005%
44	8.027	2164	2173	2215	rBV2	291200	670796	30.42%	4.103%
45	8.780	2396	2407	2437	rBV	899014	1493902	67.75%	9.138%
46	9.124	2512	2514	2521	rVV5	1269	1217	0.06%	0.007%
47	9.198	2535	2537	2543	rVB4	1314	1081	0.05%	0.007%
48	9.297	2564	2568	2572	rBV6	1294	1106	0.05%	0.007%
49	9.368	2587	2590	2593	rBV4	1447	1007	0.05%	0.006%
50	9.493	2627	2629	2633	rVB4	1671	875	0.04%	0.005%
51	9.625	2667	2670	2673	rVB3	1084	829	0.04%	0.005%
52	9.644	2673	2676	2680	rBV5	1535	1425	0.06%	0.009%
53	9.751	2705	2709	2712	rBV5	1200	1003	0.05%	0.006%
54	9.786	2717	2720	2723	rVB5	1273	833	0.04%	0.005%
55	9.805	2723	2726	2730	rBV6	1147	964	0.04%	0.006%
56	9.834	2732	2735	2737	rBV4	1168	736	0.03%	0.005%
57	9.953	2770	2772	2776	rVB4	1549	969	0.04%	0.006%
58	10.069	2806	2808	2813	rVB5	954	813	0.04%	0.005%
59	10.146	2819	2832	2850	rBV	559091	889355	40.33%	5.440%
60	10.333	2888	2890	2895	rVB5	2400	1624	0.07%	0.010%
61	10.384	2903	2906	2912	rVB6	1188	1404	0.06%	0.009%
62	10.516	2944	2947	2949	rBV2	1436	778	0.04%	0.005%
63	10.561	2958	2961	2965	rBV4	1443	1395	0.06%	0.009%
64	10.702	3002	3005	3007	rVB4	1525	856	0.04%	0.005%
65	10.776	3025	3028	3029	rBV3	1654	930	0.04%	0.006%
66	11.123	3133	3136	3142	rVB6	1266	1166	0.05%	0.007%
67	11.178	3142	3153	3186	rBV	883515	1436929	65.16%	8.789%
68	11.490	3239	3250	3258	rBV4	17569	37544	1.70%	0.230%
69	11.554	3259	3270	3299	rVB	993305	1588732	72.05%	9.718%
70	12.078	3430	3433	3436	rVB4	1410	1004	0.05%	0.006%
71	12.197	3463	3470	3472	rBV8	1162	1414	0.06%	0.009%
72	12.213	3472	3475	3478	rBV4	927	727	0.03%	0.004%
73	12.355	3516	3519	3521	rBV4	1106	957	0.04%	0.006%
74	12.394	3529	3531	3536	rVB6	1261	795	0.04%	0.005%
75	12.419	3536	3539	3545	rVB7	1213	948	0.04%	0.006%
76	12.615	3597	3600	3605	rVB7	1610	1253	0.06%	0.008%

Data Path : Z:\voasrv\HPCHEM1\MSVOA\_V\Data\VV090624\  
 Data File : VV037217.D  
 Acq On : 06 Sep 2024 12:03  
 Operator : SY/MD  
 Sample : P3843-02  
 Misc : 5.00mL/MSVOA\_V/WATER  
 ALS Vial : 1 Sample Multiplier: 1

Instrument :  
 MSVOA\_V  
 ClientSampleId :  
 BHJM5

Integration Parameters: LSCINT.P

Integrator: RTE  
 Smoothing : OFF  
 Sampling : 1  
 Start Thrs: 0.2  
 Stop Thrs : 0

Filtering: 5  
 Min Area: 0 % of largest Peak  
 Max Peaks: 100  
 Peak Location: TOP

If leading or trailing edge < 100 prefer < Baseline drop else tangent >  
 Peak separation: 5

Method : Z:\voasrv\HPCHEM1\MSVOA\_V\Method\SFAMVLM082624WMA.M  
 Title : VOC Analysis

77	12.702	3623	3627	3629	rBV5	1333	978	0.04%	0.006%
78	13.008	3719	3722	3725	rBV4	1533	1209	0.05%	0.007%
79	13.204	3780	3783	3785	rBV3	1162	743	0.03%	0.005%
80	13.220	3785	3788	3791	rBV4	980	783	0.04%	0.005%
81	13.300	3810	3813	3816	rBV4	1367	885	0.04%	0.005%
82	13.416	3845	3849	3850	rBV3	1332	799	0.04%	0.005%
83	13.455	3858	3861	3864	rBV4	1602	1234	0.06%	0.008%
84	13.545	3886	3889	3894	rBV4	1292	1153	0.05%	0.007%
85	13.567	3894	3896	3903	rVB8	1282	1147	0.05%	0.007%
86	13.670	3924	3928	3930	rBV4	1326	808	0.04%	0.005%
87	13.686	3930	3933	3936	rVB4	1646	1008	0.05%	0.006%
88	13.808	3968	3971	3974	rVV4	1019	875	0.04%	0.005%
89	14.069	4047	4052	4055	rBV6	1147	1079	0.05%	0.007%
90	14.178	4083	4086	4090	rBV5	1270	1271	0.06%	0.008%
91	14.262	4106	4112	4113	rBV5	1293	1325	0.06%	0.008%
92	14.365	4141	4144	4147	rBV4	1048	967	0.04%	0.006%
93	14.429	4161	4164	4168	rBV5	1008	825	0.04%	0.005%
94	14.673	4237	4240	4242	rBV4	1525	969	0.04%	0.006%
95	14.815	4279	4284	4285	rBV4	1394	1133	0.05%	0.007%
96	14.969	4330	4332	4336	rBV4	1680	1399	0.06%	0.009%
97	15.069	4358	4363	4365	rBV5	1454	1458	0.07%	0.009%
98	15.130	4377	4382	4384	rBV4	2420	1870	0.08%	0.011%
99	15.329	4439	4444	4447	rBV6	1328	1382	0.06%	0.008%
100	15.374	4454	4458	4459	rBV4	1768	1284	0.06%	0.008%

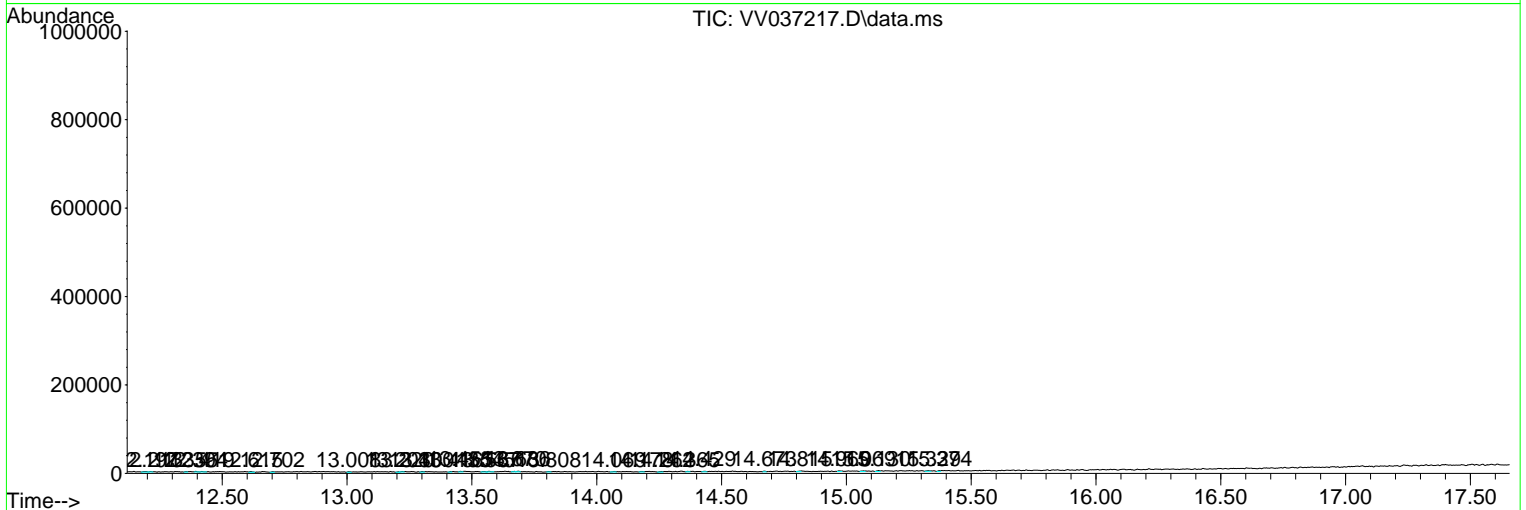
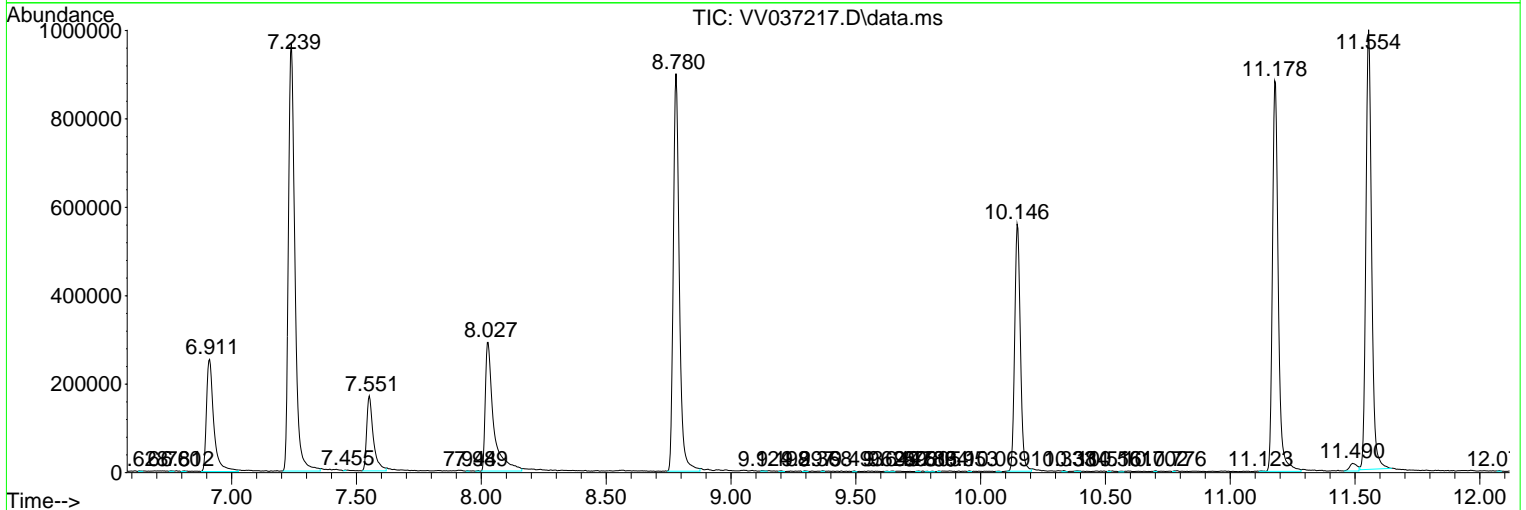
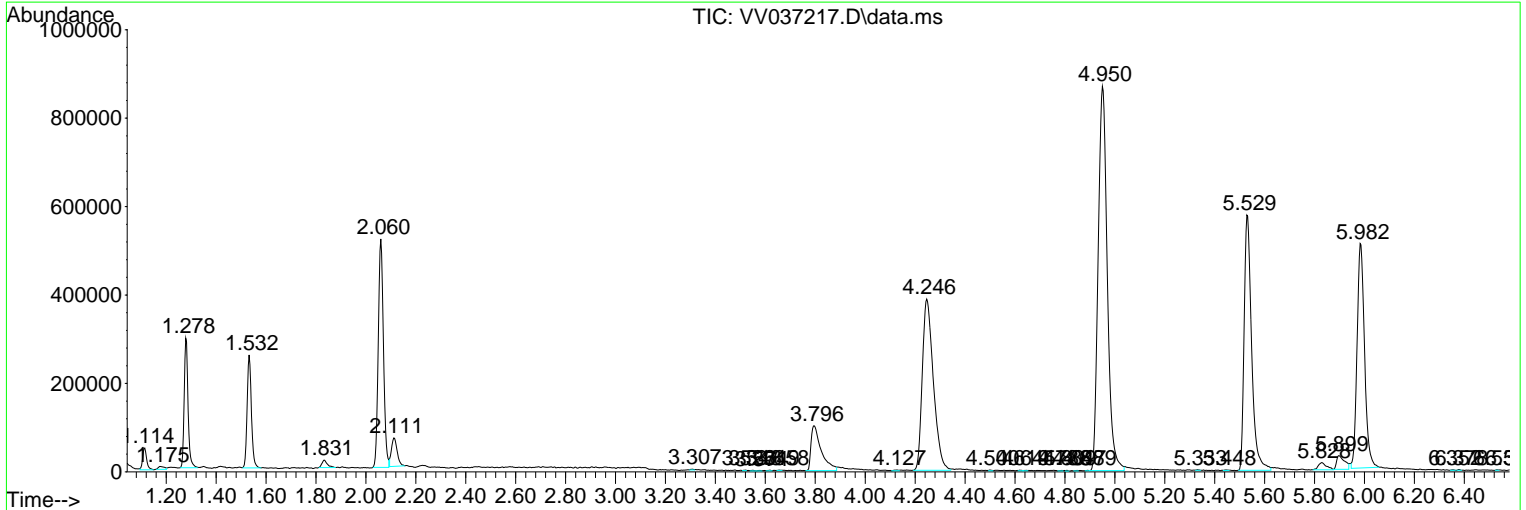
Sum of corrected areas: 16348321

Data Path : Z:\voasrv\HPCHEM1\MSVOA\_V\Data\VV090624\  
 Data File : VV037217.D  
 Acq On : 06 Sep 2024 12:03  
 Operator : SY/MD  
 Sample : P3843-02  
 Misc : 5.00mL/MSVOA\_V/WATER  
 ALS Vial : 1 Sample Multiplier: 1

**Instrument :**  
 MSVOA\_V  
**ClientSampleId :**  
 BHJM5

Quant Method : Z:\voasrv\HPCHEM1\MSVOA\_V\Method\SFAMVLM082624WMA.M  
 Quant Title : VOC Analysis

TIC Library : C:\Database\NIST20.L  
 TIC Integration Parameters: LSCINT.P



Data Path : Z:\voasrv\HPCHEM1\MSVOA\_V\Data\VV090624\  
 Data File : VV037217.D  
 Acq On : 06 Sep 2024 12:03  
 Operator : SY/MD  
 Sample : P3843-02  
 Misc : 5.00mL/MSVOA\_V/WATER  
 ALS Vial : 1 Sample Multiplier: 1

Instrument :  
 MSVOA\_V  
 ClientSampleId :  
 BHJM5

Quant Method : Z:\voasrv\HPCHEM1\MSVOA\_V\Method\SFAMVLM082624WMA.M  
 Quant Title : VOC Analysis

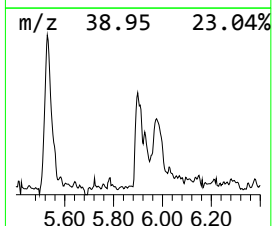
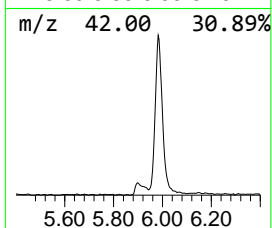
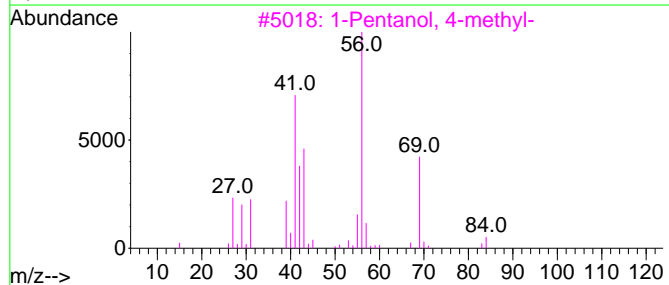
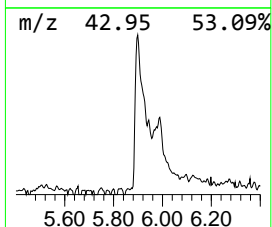
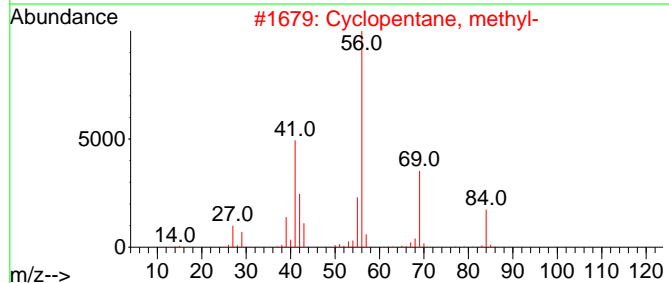
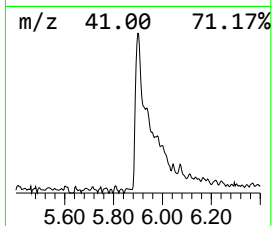
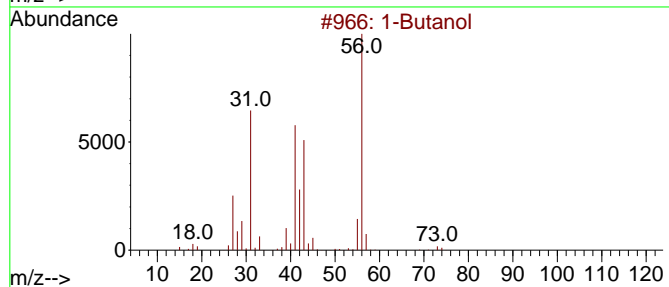
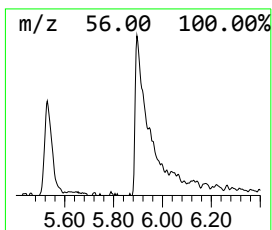
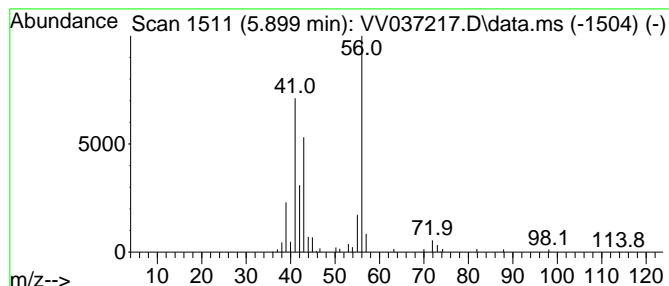
TIC Library : C:\Database\NIST20.L  
 TIC Integration Parameters: LSCINT.P

\*\*\*\*\*  
 Peak Number 1 1-Butanol Concentration Rank 2

R.T.	EstConc	Area	Relative to ISTD	R.T.
5.899	2.93 ug/L	70353	1,4-Difluorobenzene	5.532

Hit#	of 5	Tentative ID	MW	MolForm	CAS#	Qual
1		1-Butanol	74	C4H10O	000071-36-3	80
2		Cyclopentane, methyl-	84	C6H12	000096-37-7	72
3		1-Pentanol, 4-methyl-	102	C6H14O	000626-89-1	56
4		1-Butanol	74	C4H10O	000071-36-3	56
5		1-Butanol	74	C4H10O	000071-36-3	56



Data Path : Z:\voasrv\HPCHEM1\MSVOA\_V\Data\VV090624\  
Data File : VV037217.D  
Acq On : 06 Sep 2024 12:03  
Operator : SY/MD  
Sample : P3843-02  
Misc : 5.00mL/MSVOA\_V/WATER  
ALS Vial : 1 Sample Multiplier: 1

Instrument :  
MSVOA\_V  
ClientSampleId :  
BHJM5

Quant Method : Z:\voasrv\HPCHEM1\MSVOA\_V\Method\SFAMVLM082624WMA.M  
Quant Title : VOC Analysis

TIC Library : C:\Database\NIST20.L  
TIC Integration Parameters: LSCINT.P

TIC Top Hit name	RT	EstConc	Units	Response	--Internal Standard--			
					#	RT	Resp	Conc
1-Butanol	5.899	2.9	ug/L	70353	1	5.532	1201900	50.0