

Data Path : Z:\voasrv\HPCHEM1\MSVOA_V\Data\VW091024\
 Data File : VW037247.D
 Acq On : 10 Sep 2024 14:59
 Operator : SY/MD
 Sample : VSTDCCC005EC
 Misc : 25.0mL/MSVOA_V/WATER
 ALS Vial : 1 Sample Multiplier: 1

Instrument :
 MSVOA_V
 ClientSampleId :

Quant Time: Sep 11 05:06:08 2024
 Quant Method : Z:\voasrv\HPCHEM1\MSVOA_V\Method\SFAMVTR091024WMA.M
 Quant Title : TRACE VOA SFAM1.0
 QLast Update : Wed Sep 11 04:56:42 2024
 Response via : Initial Calibration

| Compound | R.T. | QI on | Response | Conc | Units | Dev(Min) |
|----------------------------|--------|-------|----------|-------|-------|----------|
| Internal Standards | | | | | | |
| 1) 1,4-Difluorobenzene | 5.529 | 114 | 328025 | 5.000 | ug/L | 0.00 |
| 28) Chlorobenzene-d5 | 8.780 | 117 | 326437 | 5.000 | ug/L | 0.00 |
| 58) 1,4-Dichlorobenzene-d4 | 11.181 | 152 | 164038 | 5.000 | ug/L | 0.00 |

| Compound | R.T. | QI on | Response | Conc | Units | Dev(Min) |
|-------------------------------|--------|-------|----------|----------|-------|----------|
| System Monitoring Compounds | | | | | | |
| 4) Vinyl chloride-d3 | 1.275 | 65 | 89577 | 4.655 | ug/L | 0.00 |
| Spike Amount | 5.000 | Range | 40 - 130 | Recovery | = | 93.000% |
| 7) Chloroethane-d5 | 1.529 | 69 | 93691 | 4.670 | ug/L | 0.00 |
| Spike Amount | 5.000 | Range | 65 - 130 | Recovery | = | 93.400% |
| 11) 1,1-Dichloroethene-d2 | 2.053 | 65 | 47504 | 4.780 | ug/L | 0.00 |
| Spike Amount | 5.000 | Range | 60 - 125 | Recovery | = | 95.600% |
| 20) 2-Butanone-d5 | 3.825 | 46 | 287371 | 49.966 | ug/L | 0.00 |
| Spike Amount | 50.000 | Range | 40 - 130 | Recovery | = | 99.940% |
| 24) Chloroform-d | 4.240 | 84 | 226978 | 4.858 | ug/L | 0.00 |
| Spike Amount | 5.000 | Range | 70 - 125 | Recovery | = | 97.200% |
| 26) 1,2-Dichloroethane-d4 | 4.937 | 65 | 105091 | 4.804 | ug/L | 0.00 |
| Spike Amount | 5.000 | Range | 70 - 130 | Recovery | = | 96.000% |
| 32) Benzene-d6 | 4.950 | 84 | 427389 | 4.883 | ug/L | 0.00 |
| Spike Amount | 5.000 | Range | 70 - 125 | Recovery | = | 97.600% |
| 36) 1,2-Dichloropropane-d6 | 5.982 | 67 | 133922 | 4.920 | ug/L | 0.00 |
| Spike Amount | 5.000 | Range | 60 - 140 | Recovery | = | 98.400% |
| 41) Toluene-d8 | 7.236 | 98 | 386277 | 4.898 | ug/L | 0.00 |
| Spike Amount | 5.000 | Range | 70 - 130 | Recovery | = | 98.000% |
| 43) trans-1,3-Dichloropropene | 7.551 | 79 | 41060 | 4.586 | ug/L | 0.00 |
| Spike Amount | 5.000 | Range | 55 - 130 | Recovery | = | 91.800% |
| 46) 2-Hexanone-d5 | 8.024 | 63 | 221257 | 50.581 | ug/L | 0.00 |
| Spike Amount | 50.000 | Range | 45 - 130 | Recovery | = | 101.160% |
| 56) 1,1,2,2-Tetrachloroethene | 10.146 | 84 | 106414 | 4.797 | ug/L | 0.00 |
| Spike Amount | 5.000 | Range | 65 - 120 | Recovery | = | 96.000% |
| 66) 1,2-Dichlorobenzene-d4 | 11.554 | 152 | 138348 | 4.744 | ug/L | 0.00 |
| Spike Amount | 5.000 | Range | 80 - 120 | Recovery | = | 94.800% |

| Compound | R.T. | QI on | Response | Conc | Units | Qvalue |
|---|-------|-------|----------|--------|--------|--------|
| Target Compounds | | | | | | |
| 2) Dichlorodifluoromethane | 1.105 | 85 | 155009 | 5.087 | ug/L | 99 |
| 3) Chloromethane | 1.214 | 50 | 158210 | 4.866 | ug/L | 99 |
| 5) Vinyl chloride | 1.278 | 62 | 158886 | 4.972 | ug/L | 98 |
| 6) Bromomethane | 1.484 | 94 | 94369 | 4.923 | ug/L | 97 |
| 8) Chloroethane | 1.545 | 64 | 94622 | 4.924 | ug/L | 100 |
| 9) Trichlorofluoromethane | 1.709 | 101 | 198891 | 5.004 | ug/L | 98 |
| 10) 1,1,2-Trichloro-1,2,2-trifluoroethane | 2.063 | 101 | 121497 | 5.047 | ug/L | 99 |
| 12) 1,1-Dichloroethene | 2.063 | 96 | 113041 | 4.918 | ug/L | 96 |
| 13) Acetone | 2.159 | 43 | 178631 | 44.607 | ug/L | 98 |
| 14) Carbon disulfide | 2.233 | 76 | 347356 | 4.792 | ug/L | 100 |
| 15) Methyl Acetate | 2.391 | 43 | 46292 | 5.047 | ug/L | 100 |
| 16) Methylene chloride | 2.439 | 84 | 125359 | 4.744 | ug/L | 97 |
| 17) Methyl tert-butyl Ether | 2.699 | 73 | 274066 | 5.016 | ug/L | 100 |
| 18) trans-1,2-Dichloroethene | 2.687 | 96 | 121120 | 5.008 | ug/L | 97 |
| 19) 1,1-Dichloroethane | 3.105 | 63 | 228292 | 4.943 | ug/L | 99 |
| 21) 2-Butanone | 3.902 | 43 | 282406 | 46.400 | ug/L # | 67 |
| 22) cis-1,2-Dichloroethene | 3.805 | 96 | 130003 | 4.972 | ug/L | 100 |
| 23) Bromochloromethane | 4.140 | 128 | 56343 | 4.976 | ug/L | 98 |
| 25) Chloroform | 4.268 | 83 | 228844 | 4.919 | ug/L | 99 |

Data Path : Z:\voasrv\HPCHEM1\MSVOA_V\Data\VW091024\
 Data File : VW037247.D
 Acq On : 10 Sep 2024 14:59
 Operator : SY/MD
 Sample : VSTDCCC005EC
 Misc : 25.0mL/MSVOA_V/WATER
 ALS Vial : 1 Sample Multiplier: 1

Instrument :
 MSVOA_V
ClientSampleId :

Quant Time: Sep 11 05:06:08 2024
 Quant Method : Z:\voasrv\HPCHEM1\MSVOA_V\Method\SFAMVTR091024WMA.M
 Quant Title : TRACE VOA SFAM1.0
 QLast Update : Wed Sep 11 04:56:42 2024
 Response via : Initial Calibration

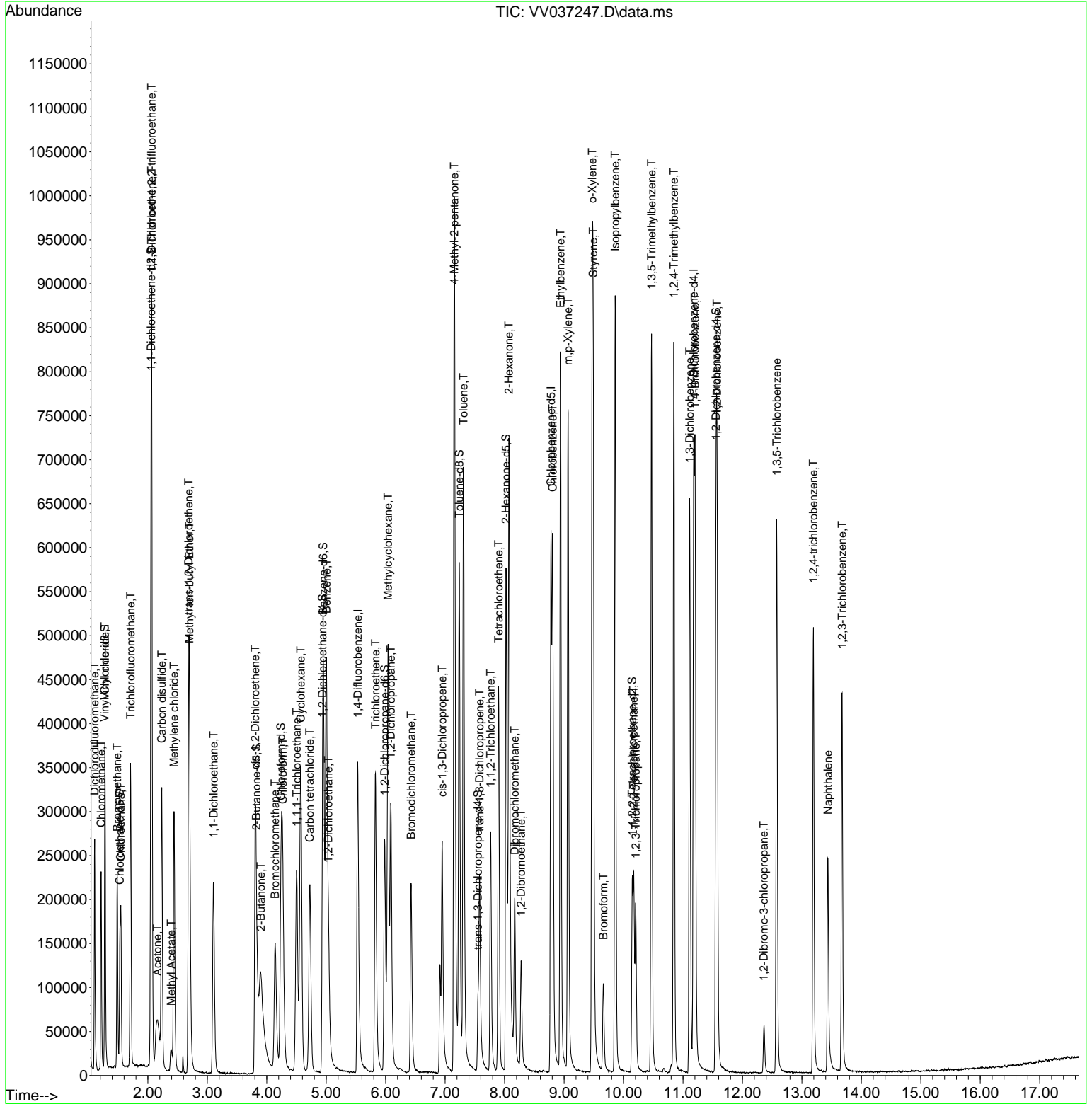
| Compound | R. T. | QI on | Response | Conc | Units | Dev(Min) |
|---------------------------------|--------|-------|----------|--------|-------|----------|
| 27) 1,2-Dichloroethane | 5.037 | 62 | 133459 | 5.070 | ug/L | 99 |
| 29) 1,1,1-Trichloroethane | 4.503 | 97 | 193552 | 5.000 | ug/L | 97 |
| 30) Cyclohexane | 4.571 | 56 | 191668 | 5.104 | ug/L | 98 |
| 31) Carbon tetrachloride | 4.722 | 117 | 165870 | 5.035 | ug/L | 100 |
| 33) Benzene | 5.002 | 78 | 495781 | 5.041 | ug/L | 100 |
| 34) Trichloroethene | 5.828 | 95 | 132816 | 5.011 | ug/L | 98 |
| 35) Methylcyclohexane | 6.040 | 83 | 206191 | 5.117 | ug/L | 99 |
| 37) 1,2-Dichloropropane | 6.085 | 63 | 122757 | 4.906 | ug/L | 100 |
| 38) Bromodichloromethane | 6.426 | 83 | 154219 | 4.923 | ug/L | 100 |
| 39) cis-1,3-Dichloropropene | 6.950 | 75 | 179209 | 4.944 | ug/L | 99 |
| 40) 4-Methyl-2-pentanone | 7.153 | 43 | 736529 | 51.410 | ug/L | 98 |
| 42) Toluene | 7.310 | 91 | 528995 | 5.170 | ug/L | 98 |
| 44) trans-1,3-Dichloropropene | 7.577 | 75 | 144228 | 4.931 | ug/L | 95 |
| 45) 1,1,2-Trichloroethane | 7.764 | 97 | 89559 | 5.000 | ug/L | 98 |
| 47) Tetrachloroethene | 7.899 | 164 | 95962 | 5.059 | ug/L | 98 |
| 48) 2-Hexanone | 8.072 | 43 | 516509 | 49.326 | ug/L | 99 |
| 49) Dibromochloromethane | 8.172 | 129 | 94677 | 5.046 | ug/L | 100 |
| 50) 1,2-Dibromoethane | 8.278 | 107 | 84551 | 4.996 | ug/L | 99 |
| 51) Chlorobenzene | 8.808 | 112 | 335833 | 4.929 | ug/L | 100 |
| 52) Ethylbenzene | 8.940 | 91 | 576030 | 5.045 | ug/L | 100 |
| 53) m,p-Xylene | 9.066 | 106 | 215273 | 5.124 | ug/L | 100 |
| 54) o-Xylene | 9.474 | 106 | 212372 | 5.106 | ug/L | 95 |
| 55) Styrene | 9.490 | 104 | 363166 | 5.150 | ug/L | 97 |
| 57) 1,1,2,2-Tetrachloroethane | 10.172 | 83 | 108409 | 5.010 | ug/L | 97 |
| 59) Bromoform | 9.661 | 173 | 45651 | 4.757 | ug/L | 100 |
| 60) Isopropylbenzene | 9.860 | 105 | 564662 | 5.143 | ug/L | 99 |
| 61) 1,2,3-Trichloropropane | 10.204 | 75 | 77537 | 5.194 | ug/L | 98 |
| 62) 1,3,5-Trimethylbenzene | 10.471 | 105 | 454196 | 5.217 | ug/L | 100 |
| 63) 1,2,4-Trimethylbenzene | 10.847 | 105 | 457870 | 5.235 | ug/L | 100 |
| 64) 1,3-Dichlorobenzene | 11.114 | 146 | 263612 | 5.079 | ug/L | 99 |
| 65) 1,4-Dichlorobenzene | 11.204 | 146 | 258888 | 4.864 | ug/L | 98 |
| 67) 1,2-Dichlorobenzene | 11.574 | 146 | 239119 | 4.969 | ug/L | 98 |
| 68) 1,2-Dibromo-3-chloropropane | 12.361 | 75 | 14602 | 4.717 | ug/L | 95 |
| 69) 1,3,5-Trichlorobenzene | 12.577 | 180 | 182968 | 4.943 | ug/L | 98 |
| 70) 1,2,4-trichlorobenzene | 13.194 | 180 | 151019 | 4.956 | ug/L | 100 |
| 71) Naphthalene | 13.439 | 128 | 220852 | 4.743 | ug/L | 99 |
| 72) 1,2,3-Trichlorobenzene | 13.676 | 180 | 126585 | 5.021 | ug/L | 97 |

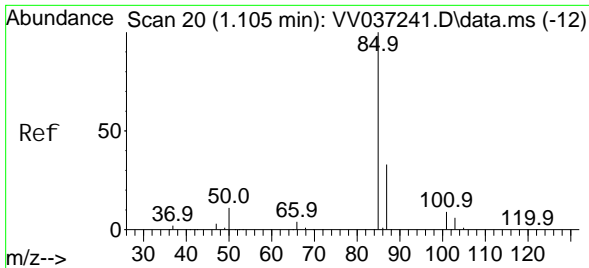
(#) = qualifier out of range (m) = manual integration (+) = signals summed

Data Path : Z:\voasrv\HPCHEM1\MSVOA_V\Data\VV091024\
 Data File : VV037247.D
 Acq On : 10 Sep 2024 14:59
 Operator : SY/MD
 Sample : VSTDC005EC
 Mi sc : 25.0mL/MSVOA_V/WATER
 ALS Vial : 1 Sample Multiplier: 1

Instrument :
 MSVOA_V
 ClientSampleId :

Quant Time: Sep 11 05:06:08 2024
 Quant Method : Z:\voasrv\HPCHEM1\MSVOA_V\Method\SFAMVTR091024WMA.M
 Quant Title : TRACE VOA SFAM1.0
 QLast Update : Wed Sep 11 04:56:42 2024
 Response via : Initial Calibration

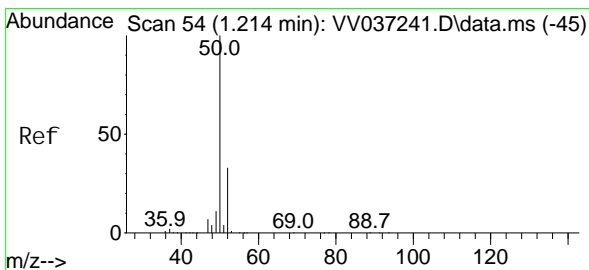
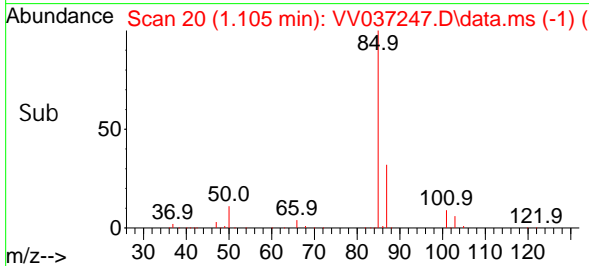
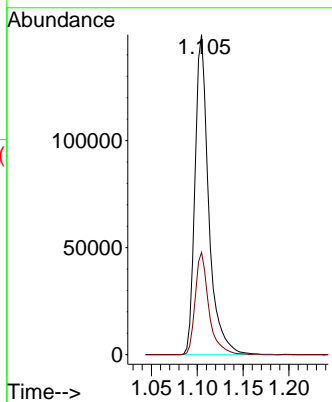
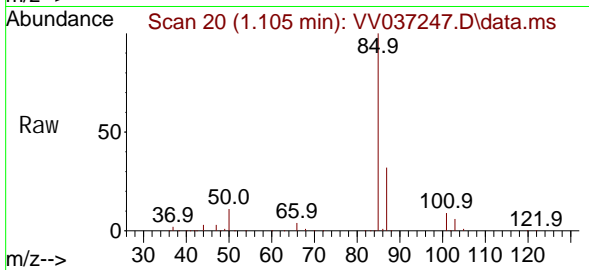




#2
 Di chlorodi fluoromethane
 Concen: 5.087 ug/L
 RT: 1.105 min Scan# 20
 Delta R.T. 0.000 min
 Lab File: VV037247.D
 Acq: 10 Sep 2024 14:59

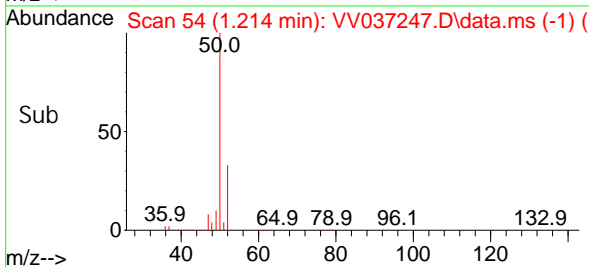
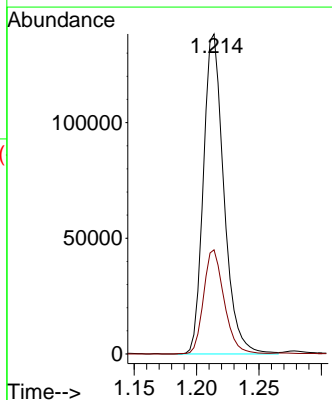
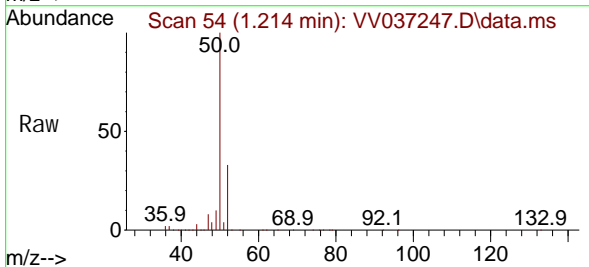
Instrument : MSVOA_V
 ClientSampleId :

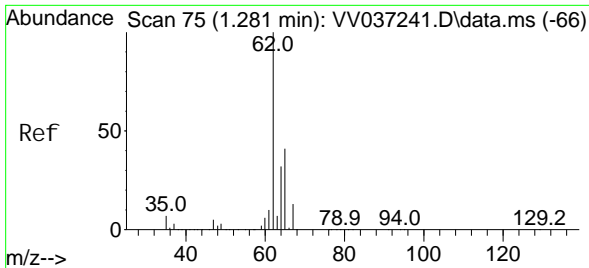
Tgt Ion: 85 Resp: 155009
 Ion Ratio Lower Upper
 85 100
 87 31.8 25.8 38.8



#3
 Chloromethane
 Concen: 4.866 ug/L
 RT: 1.214 min Scan# 54
 Delta R.T. 0.000 min
 Lab File: VV037247.D
 Acq: 10 Sep 2024 14:59

Tgt Ion: 50 Resp: 158210
 Ion Ratio Lower Upper
 50 100
 52 32.5 23.3 43.3

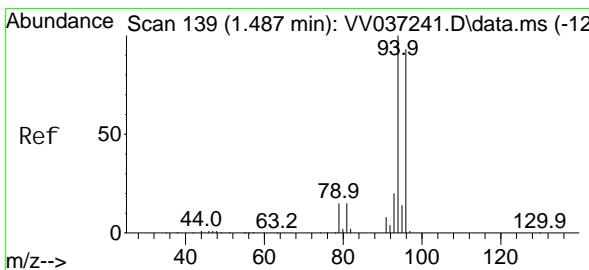
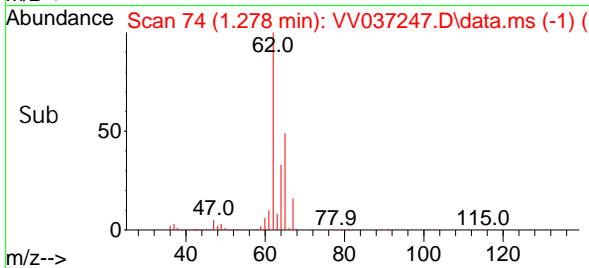
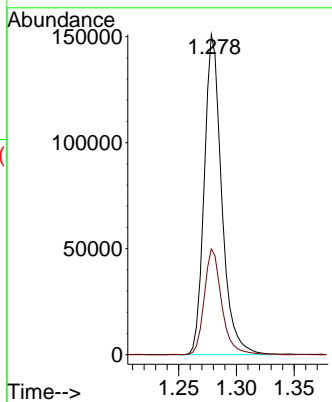
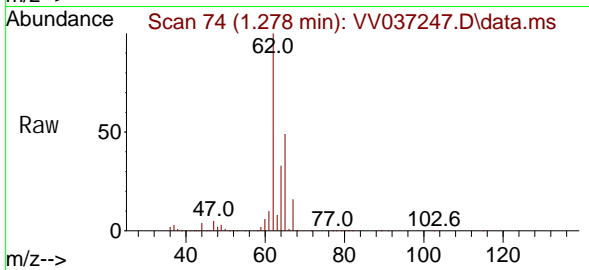




#5
 Vinyl chloride
 Concen: 4.972 ug/L
 RT: 1.278 min Scan# 74
 Delta R.T. -0.003 min
 Lab File: VV037247.D
 Acq: 10 Sep 2024 14:59

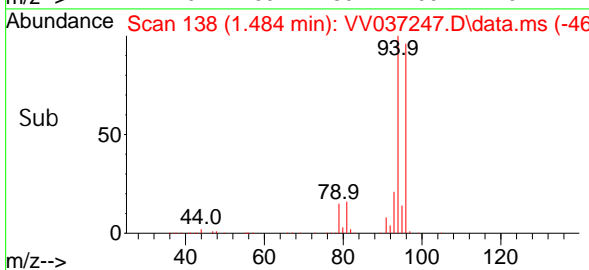
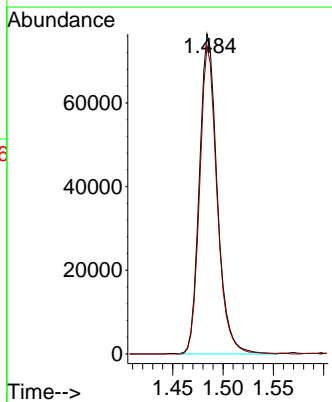
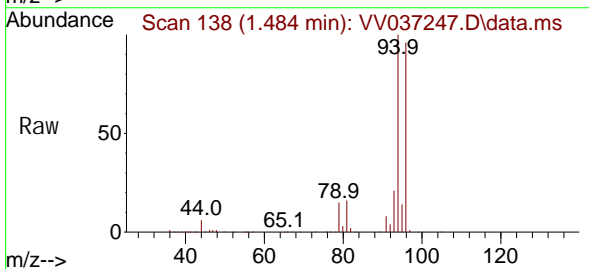
Instrument : MSVOA_V
 ClientSampleId :

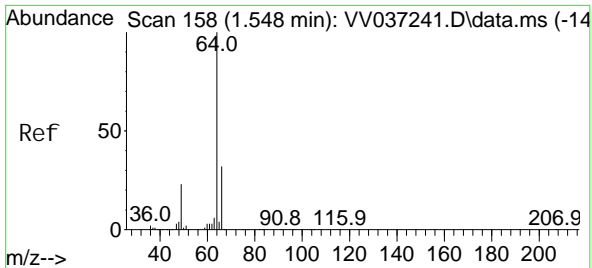
Tgt Ion: 62 Resp: 158886
 Ion Ratio Lower Upper
 62 100
 64 33.0 22.4 41.6



#6
 Bromomethane
 Concen: 4.923 ug/L
 RT: 1.484 min Scan# 138
 Delta R.T. -0.003 min
 Lab File: VV037247.D
 Acq: 10 Sep 2024 14:59

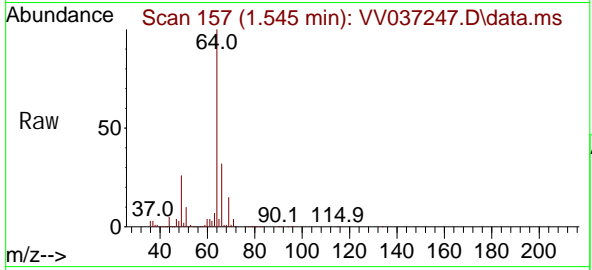
Tgt Ion: 94 Resp: 94369
 Ion Ratio Lower Upper
 94 100
 96 96.2 65.3 121.3



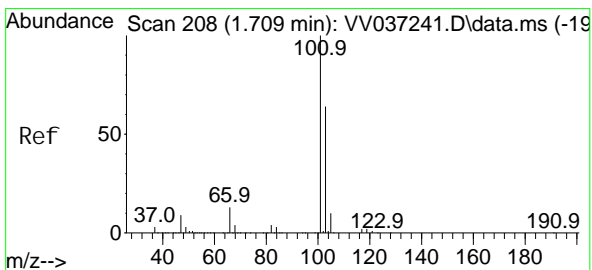
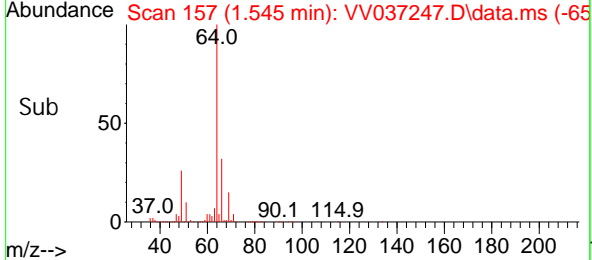
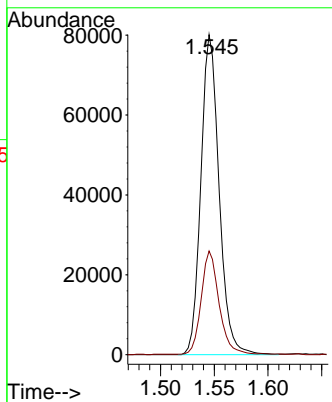


#8
 Chloroethane
 Concen: 4.924 ug/L
 RT: 1.545 min Scan# 157
 Delta R.T. -0.003 min
 Lab File: VV037247.D
 Acq: 10 Sep 2024 14:59

Instrument : MSVOA_V
 ClientSampleId :

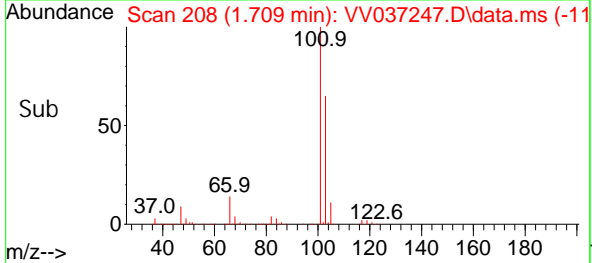
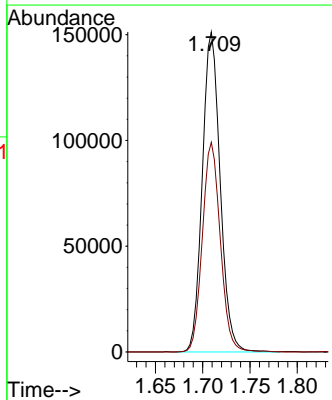
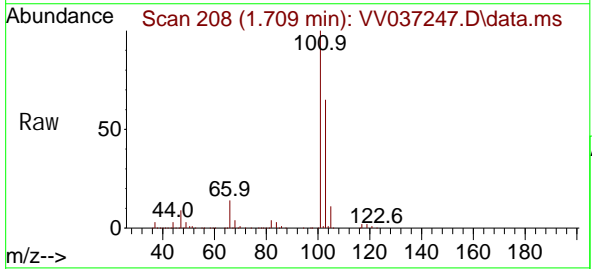


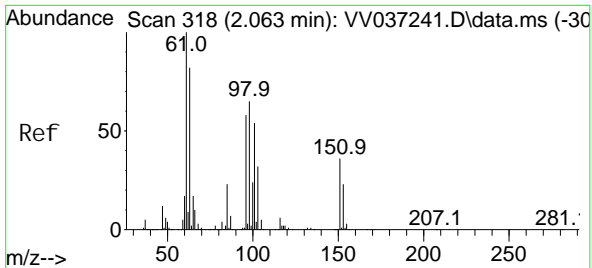
Tgt Ion: 64 Resp: 94622
 Ion Ratio Lower Upper
 64 100
 66 32.4 22.7 42.1



#9
 Trichlorofluoromethane
 Concen: 5.004 ug/L
 RT: 1.709 min Scan# 208
 Delta R.T. 0.000 min
 Lab File: VV037247.D
 Acq: 10 Sep 2024 14:59

Tgt Ion: 101 Resp: 198891
 Ion Ratio Lower Upper
 101 100
 103 65.7 51.5 77.3

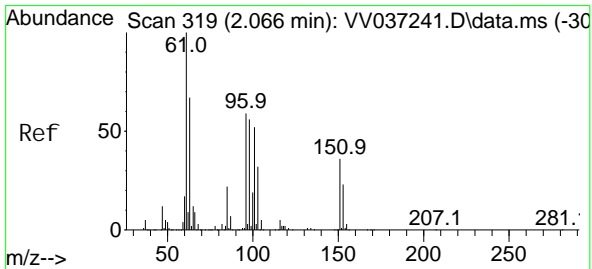
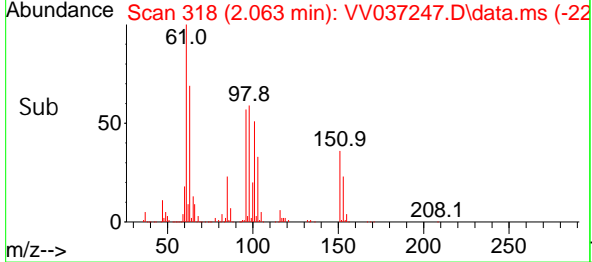
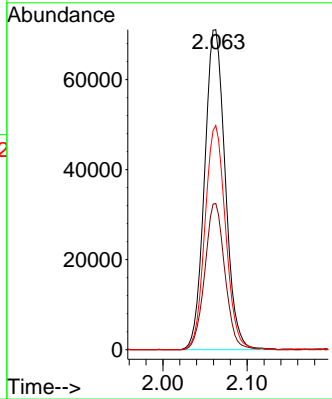
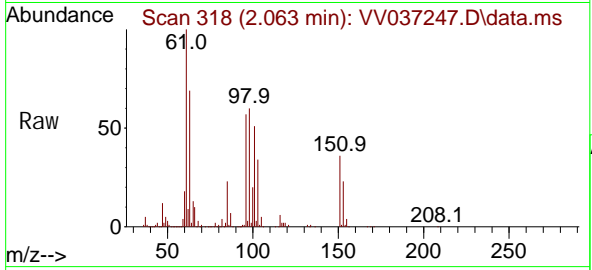




#10
 1, 1, 2-Tri chloro-1, 2, 2-tri fluoroethane
 Concen: 5.047 ug/L
 RT: 2.063 min Scan# 318
 Delta R.T. 0.000 min
 Lab File: VV037247.D
 Acq: 10 Sep 2024 14:59

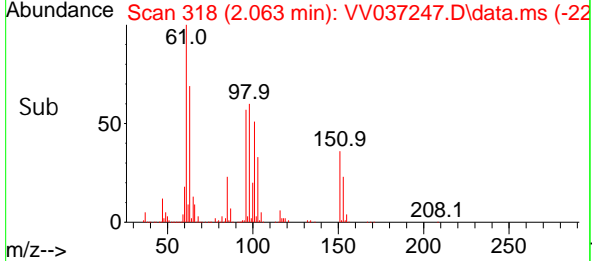
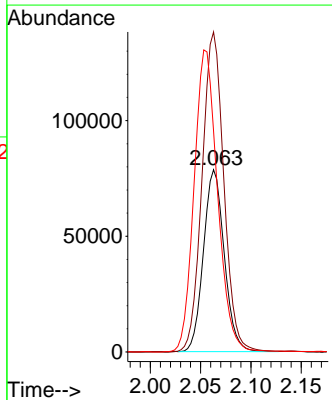
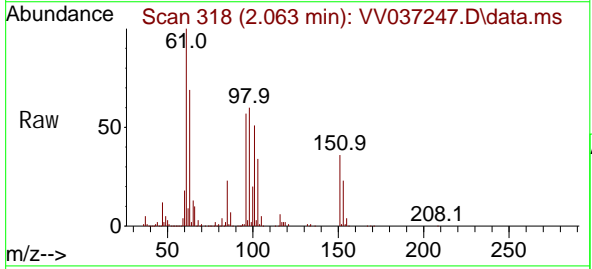
Instrument : MSVOA_V
 ClientSampleId :

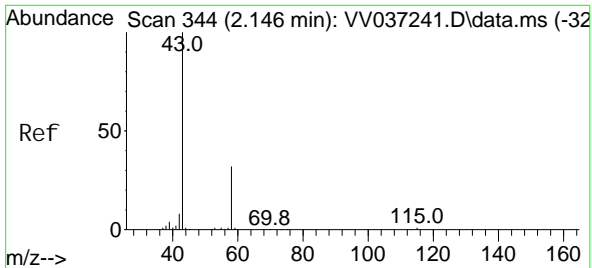
| Tgt Ion | Resp | Lower | Upper |
|---------|--------|-------|-------|
| 101 | 121497 | | |
| 85 | 44.4 | 35.1 | 52.7 |
| 151 | 69.9 | 55.3 | 82.9 |



#12
 1, 1-Di chloroethene
 Concen: 4.918 ug/L
 RT: 2.063 min Scan# 318
 Delta R.T. -0.003 min
 Lab File: VV037247.D
 Acq: 10 Sep 2024 14:59

| Tgt Ion | Resp | Lower | Upper |
|---------|--------|-------|-------|
| 96 | 113041 | | |
| 61 | 175.6 | 119.9 | 222.7 |
| 63 | 121.3 | 81.4 | 151.2 |

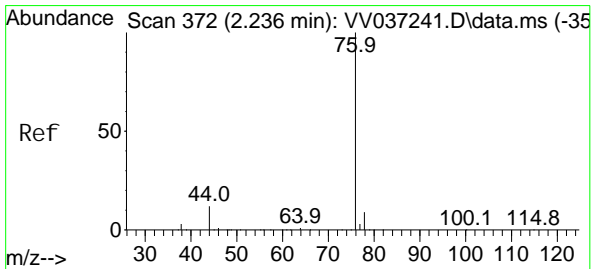
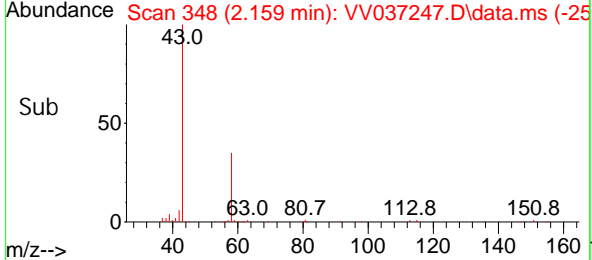
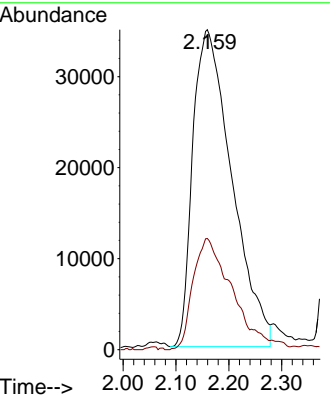
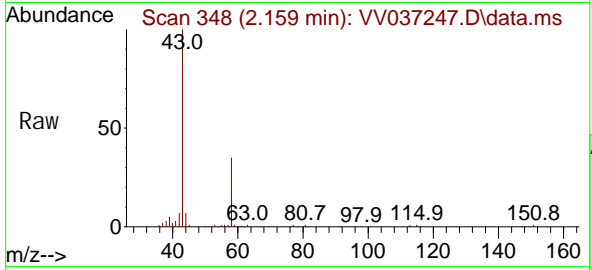




#13
 Acetone
 Concen: 44.607 ug/L
 RT: 2.159 min Scan# 348
 Delta R.T. 0.013 min
 Lab File: VV037247.D
 Acq: 10 Sep 2024 14:59

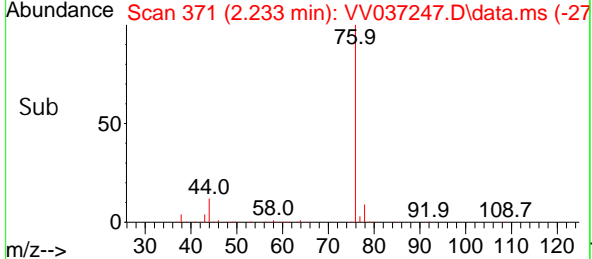
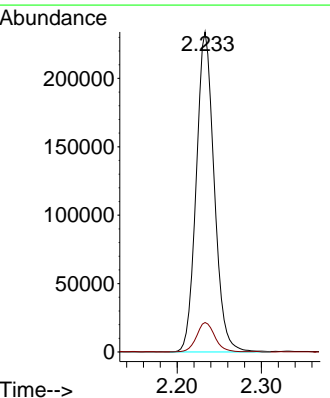
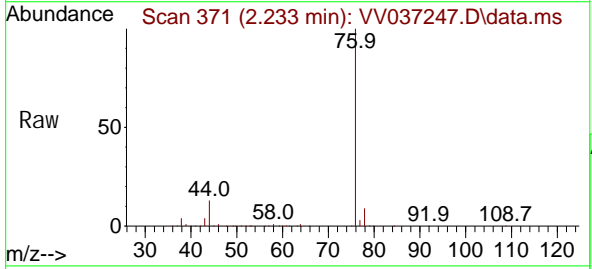
Instrument : MSVOA_V
 ClientSampleId :

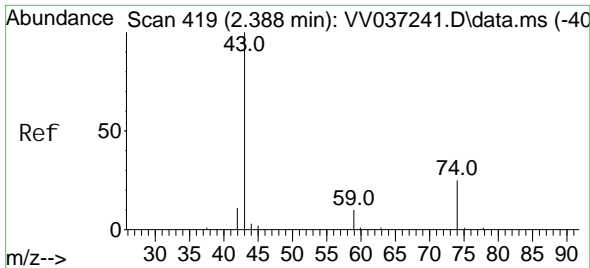
Tgt Ion: 43 Resp: 178631
 Ion Ratio Lower Upper
 43 100
 58 35.5 0.0 69.2



#14
 Carbon di sul fi de
 Concen: 4.792 ug/L
 RT: 2.233 min Scan# 371
 Delta R.T. -0.003 min
 Lab File: VV037247.D
 Acq: 10 Sep 2024 14:59

Tgt Ion: 76 Resp: 347356
 Ion Ratio Lower Upper
 76 100
 78 9.2 7.3 10.9

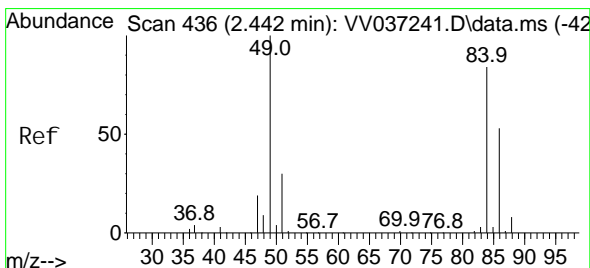
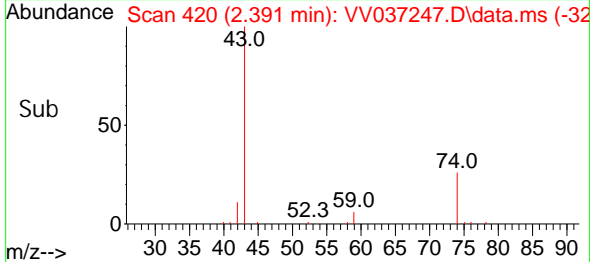
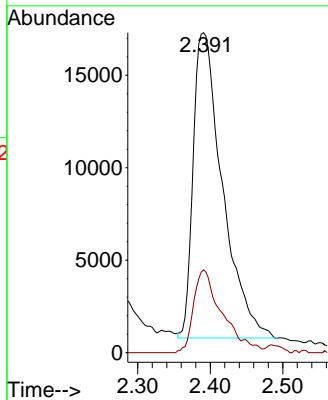
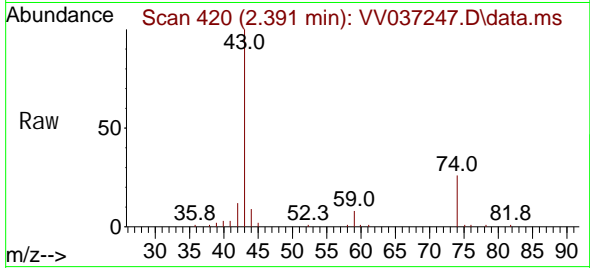




#15
Methyl Acetate
Concen: 5.047 ug/L
RT: 2.391 min Scan# 431
Delta R.T. 0.003 min
Lab File: VV037247.D
Acq: 10 Sep 2024 14:59

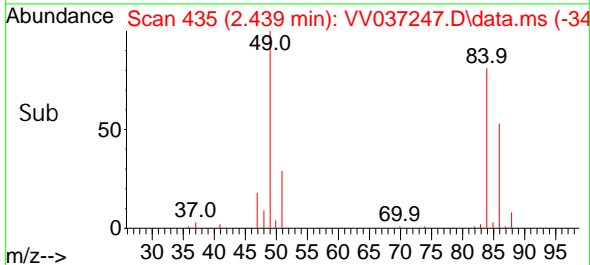
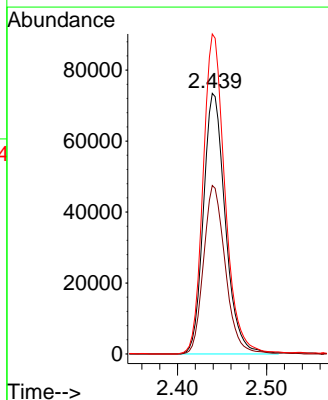
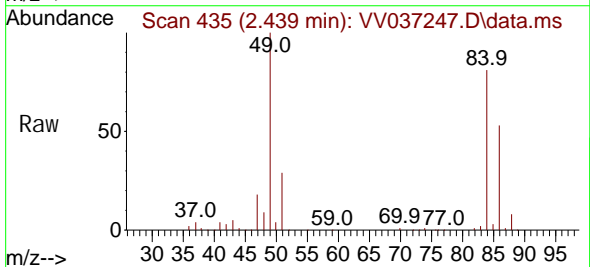
Instrument : MSVOA_V
Client SampleId :

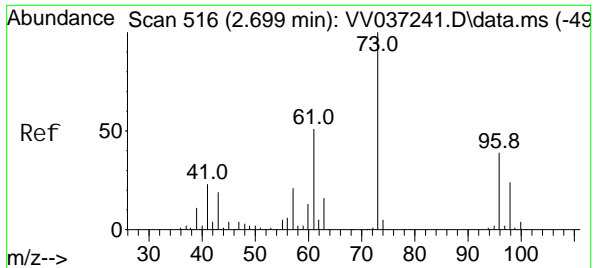
| Tgt Ion | Resp | Lower | Upper |
|---------|------|-------|-------|
| 43 | 100 | | |
| 74 | 26.5 | 21.0 | 31.4 |



#16
Methylene chloride
Concen: 4.744 ug/L
RT: 2.439 min Scan# 435
Delta R.T. -0.003 min
Lab File: VV037247.D
Acq: 10 Sep 2024 14:59

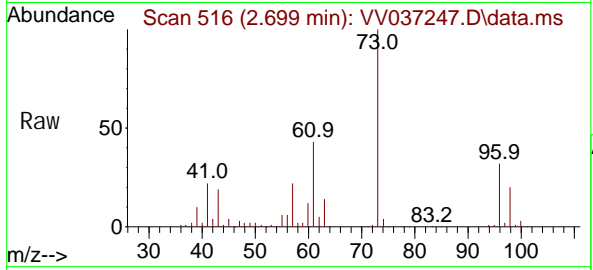
| Tgt Ion | Resp | Lower | Upper |
|---------|-------|-------|-------|
| 84 | 100 | | |
| 86 | 64.6 | 44.0 | 81.8 |
| 49 | 122.7 | 83.0 | 154.1 |





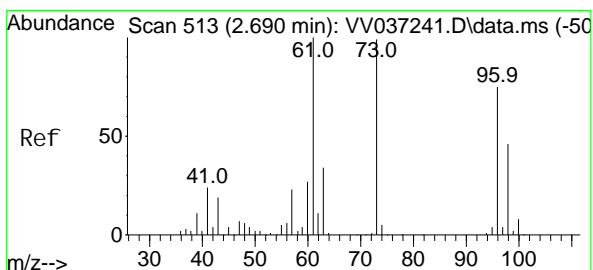
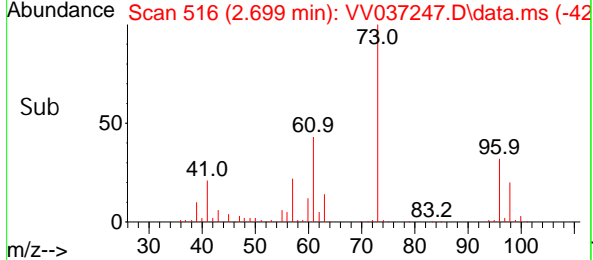
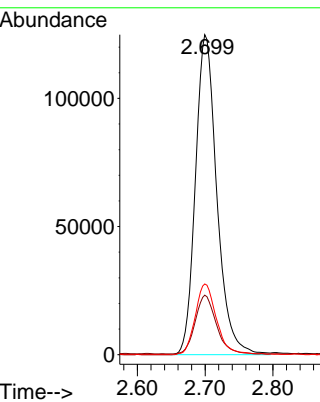
#17
 Methyl tert-butyl Ether
 Concen: 5.016 ug/L
 RT: 2.699 min Scan# 516
 Delta R.T. 0.000 min
 Lab File: VV037247.D
 Acq: 10 Sep 2024 14:59

Instrument : MSVOA_V
 ClientSampleId :



Tgt Ion: 73 Resp: 274066

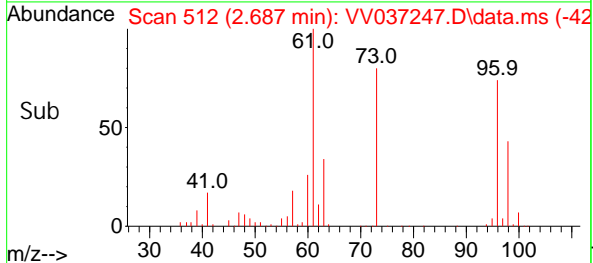
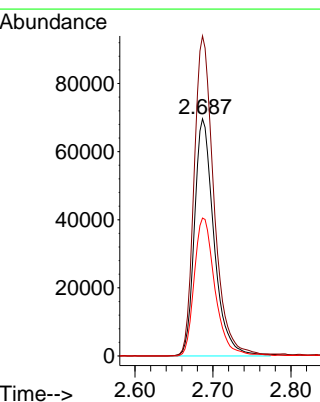
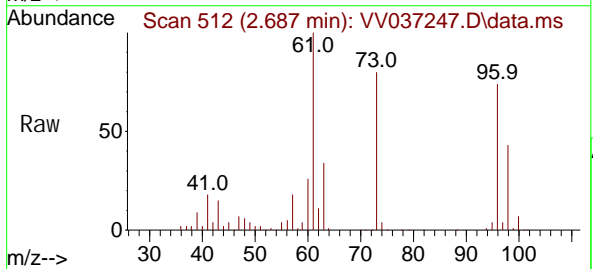
| Ion | Ratio | Lower | Upper |
|-----|-------|-------|-------|
| 73 | 100 | | |
| 43 | 18.0 | 14.5 | 21.7 |
| 57 | 22.0 | 17.7 | 26.5 |

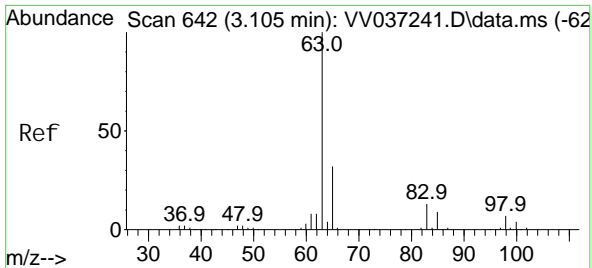


#18
 trans-1,2-Dichloroethene
 Concen: 5.008 ug/L
 RT: 2.687 min Scan# 512
 Delta R.T. -0.003 min
 Lab File: VV037247.D
 Acq: 10 Sep 2024 14:59

Tgt Ion: 96 Resp: 121120

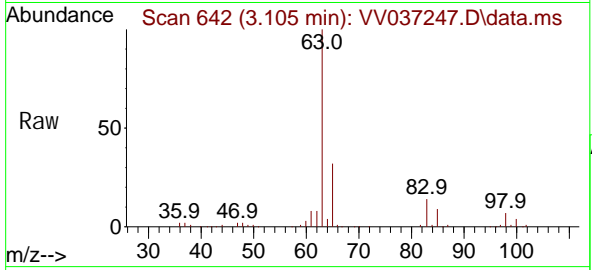
| Ion | Ratio | Lower | Upper |
|-----|-------|-------|-------|
| 96 | 100 | | |
| 61 | 134.9 | 92.8 | 172.4 |
| 98 | 58.2 | 43.0 | 79.8 |



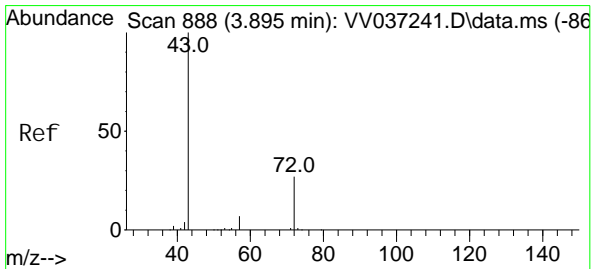
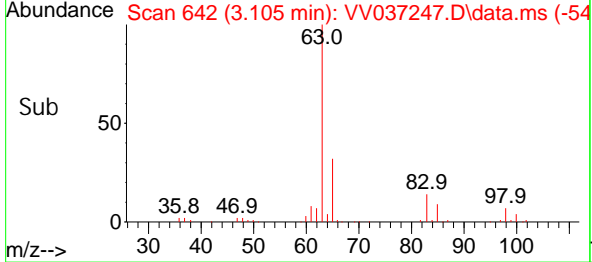
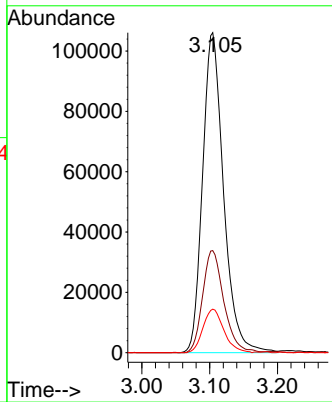


#19
 1,1-Dichloroethane
 Concen: 4.943 ug/L
 RT: 3.105 min Scan# 64
 Delta R.T. 0.000 min
 Lab File: VV037247.D
 Acq: 10 Sep 2024 14:59

Instrument : MSVOA_V
 ClientSampleId :

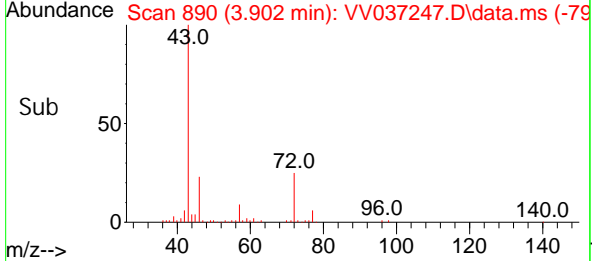
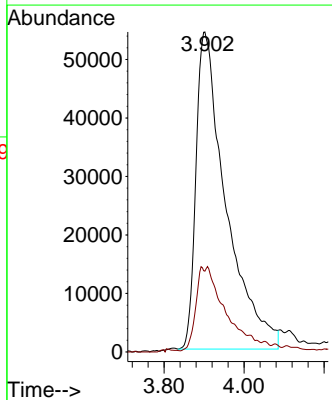
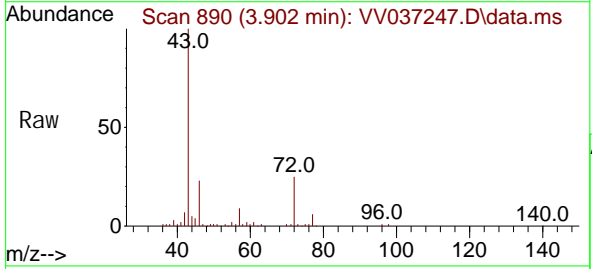


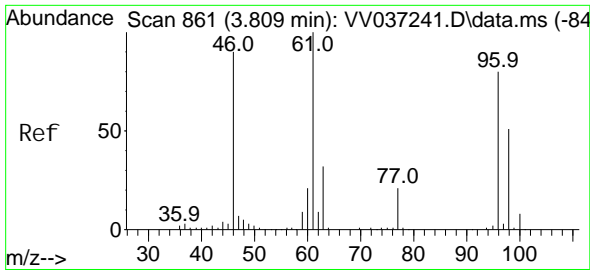
Tgt Ion: 63 Resp: 228292
 Ion Ratio Lower Upper
 63 100
 65 31.9 22.5 41.7
 83 13.6 8.9 16.5



#21
 2-Butanone
 Concen: 46.400 ug/L
 RT: 3.902 min Scan# 890
 Delta R.T. 0.006 min
 Lab File: VV037247.D
 Acq: 10 Sep 2024 14:59

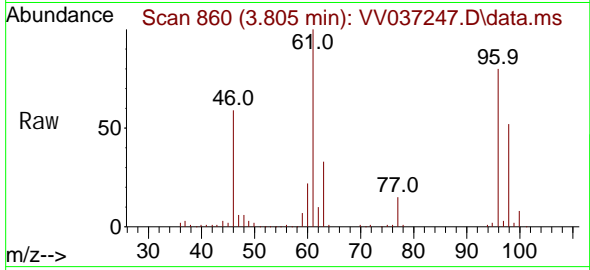
Tgt Ion: 43 Resp: 282406
 Ion Ratio Lower Upper
 43 100
 72 8.2 12.2 36.6#



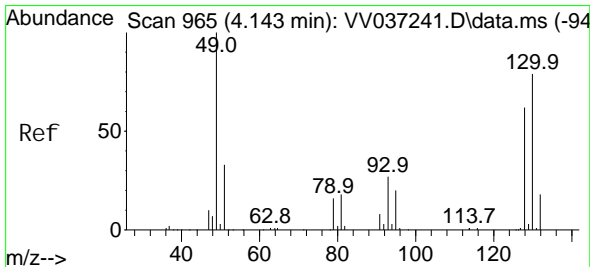
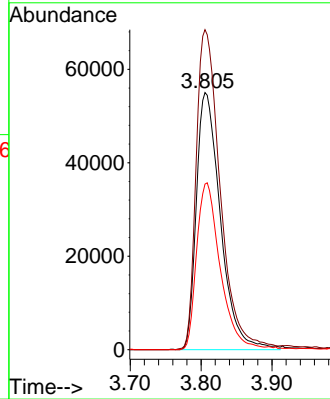
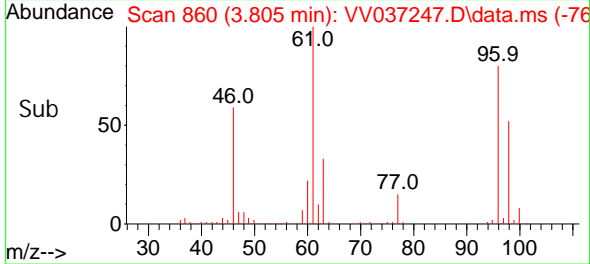


#22
 cis-1,2-Dichloroethene
 Concen: 4.972 ug/L
 RT: 3.805 min Scan# 860
 Delta R.T. -0.003 min
 Lab File: VV037247.D
 Acq: 10 Sep 2024 14:59

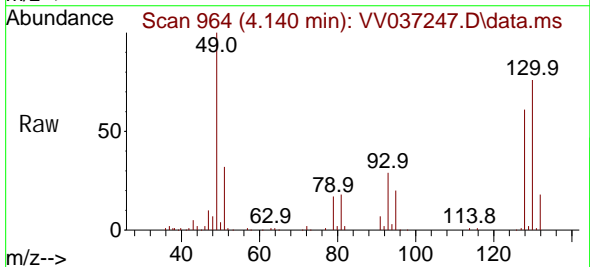
Instrument : MSVOA_V
 ClientSampleId :



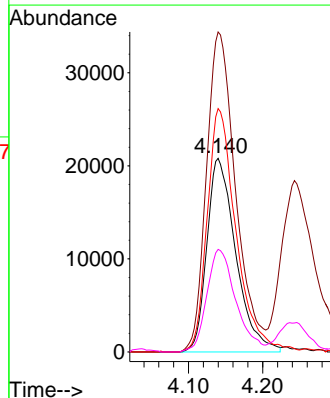
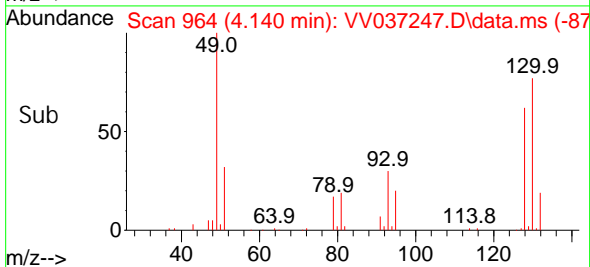
Tgt Ion: 96 Resp: 130003
 Ion Ratio Lower Upper
 96 100
 61 124.4 87.6 162.6
 98 64.4 44.9 83.5

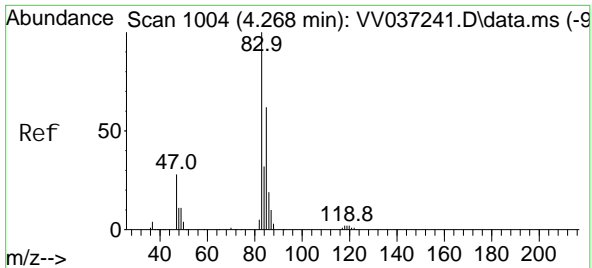


#23
 Bromochloromethane
 Concen: 4.976 ug/L
 RT: 4.140 min Scan# 964
 Delta R.T. -0.003 min
 Lab File: VV037247.D
 Acq: 10 Sep 2024 14:59



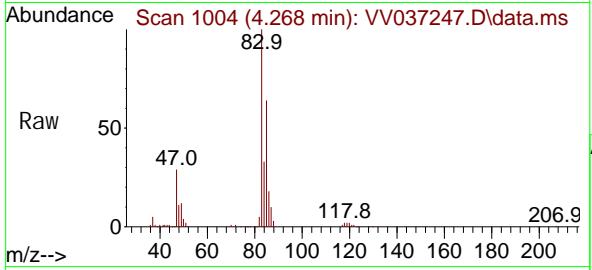
Tgt Ion: 128 Resp: 56343
 Ion Ratio Lower Upper
 128 100
 49 165.3 114.0 211.8
 130 125.7 89.3 165.9
 51 53.0 43.0 64.4



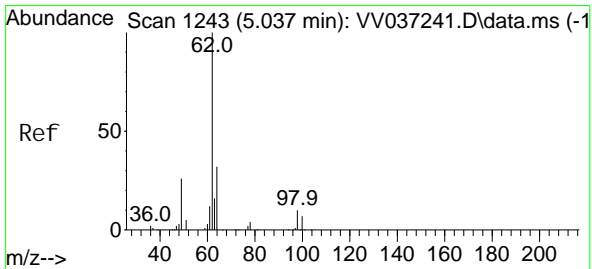
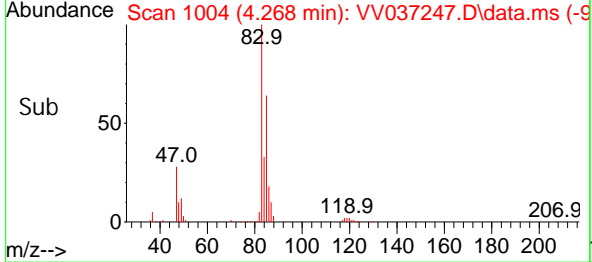
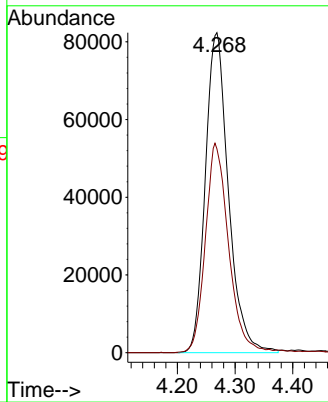


#25
 Chloroform
 Concen: 4.919 ug/L
 RT: 4.268 min Scan# 1004
 Delta R.T. 0.000 min
 Lab File: VV037247.D
 Acq: 10 Sep 2024 14:59

Instrument : MSVOA_V
 ClientSampleId :

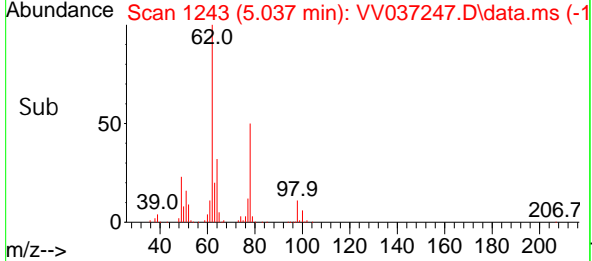
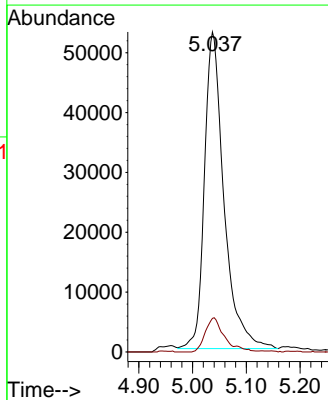
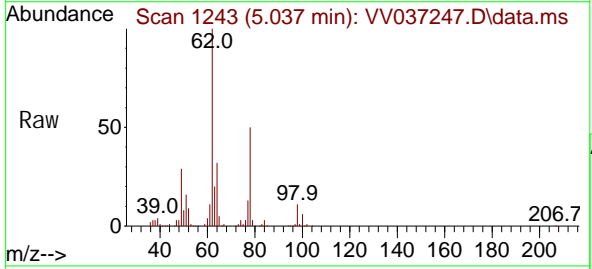


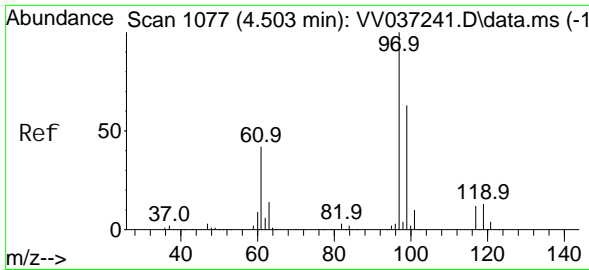
Tgt Ion: 83 Resp: 228844
 Ion Ratio Lower Upper
 83 100
 85 63.7 43.8 81.4



#27
 1,2-Dichloroethane
 Concen: 5.070 ug/L
 RT: 5.037 min Scan# 1243
 Delta R.T. 0.000 min
 Lab File: VV037247.D
 Acq: 10 Sep 2024 14:59

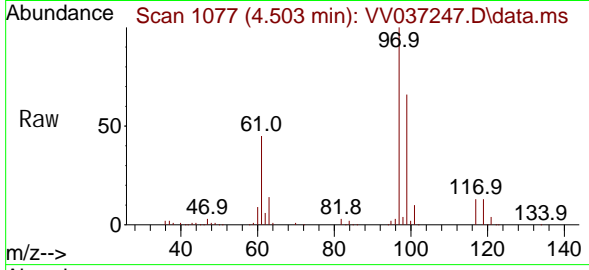
Tgt Ion: 62 Resp: 133459
 Ion Ratio Lower Upper
 62 100
 98 10.5 8.2 12.4



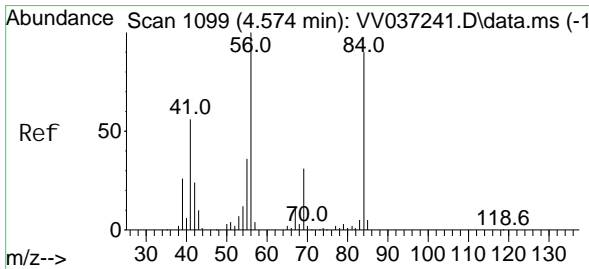
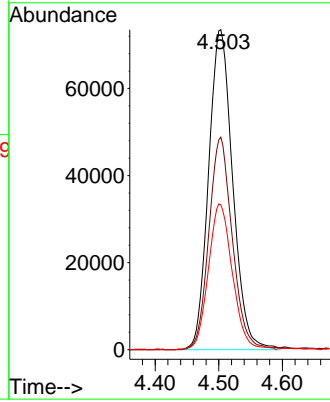
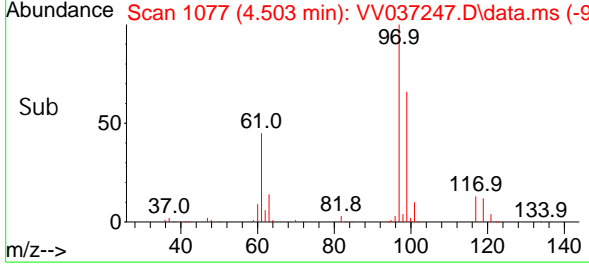


#29
 1,1,1-Trichloroethane
 Concen: 5.000 ug/L
 RT: 4.503 min Scan# 1077
 Delta R.T. 0.000 min
 Lab File: VV037247.D
 Acq: 10 Sep 2024 14:59

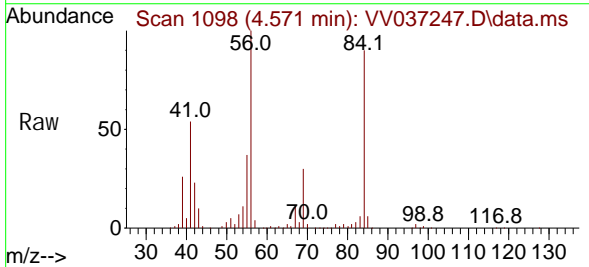
Instrument : MSVOA_V
 ClientSampleId :



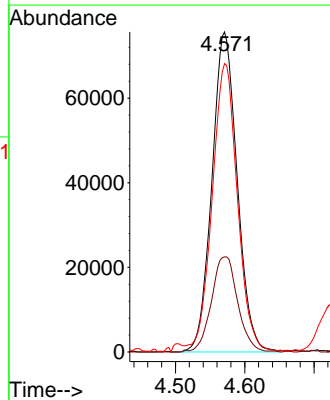
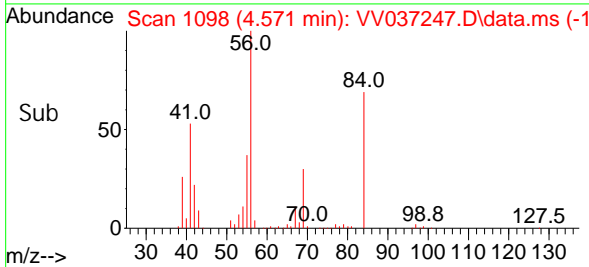
Tgt Ion: 97 Resp: 193552
 Ion Ratio Lower Upper
 97 100
 99 64.5 50.0 75.0
 61 45.3 34.3 51.5

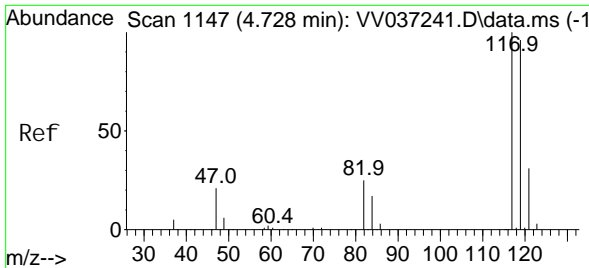


#30
 Cyclohexane
 Concen: 5.104 ug/L
 RT: 4.571 min Scan# 1098
 Delta R.T. -0.003 min
 Lab File: VV037247.D
 Acq: 10 Sep 2024 14:59



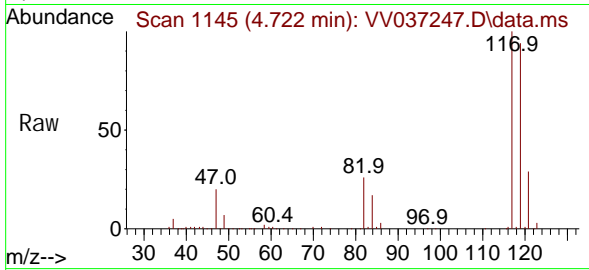
Tgt Ion: 56 Resp: 191668
 Ion Ratio Lower Upper
 56 100
 69 30.0 24.1 36.1
 84 88.7 73.1 109.7



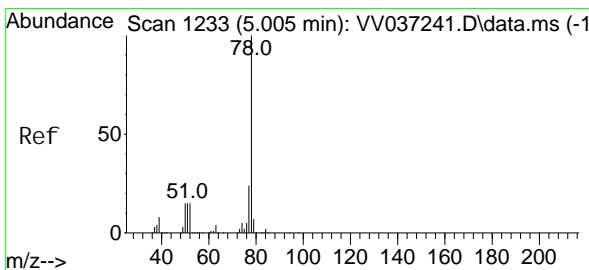
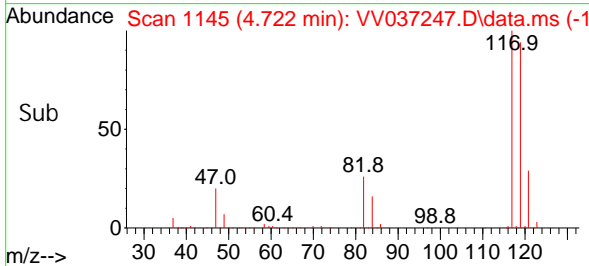
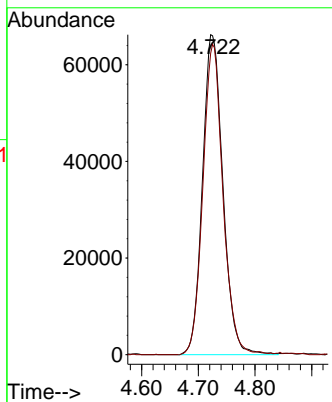


#31
 Carbon tetrachloride
 Concen: 5.035 ug/L
 RT: 4.722 min Scan# 1145
 Delta R.T. -0.006 min
 Lab File: VV037247.D
 Acq: 10 Sep 2024 14:59

Instrument : MSVOA_V
 ClientSampleId :

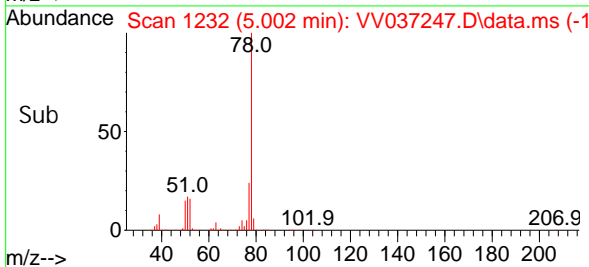
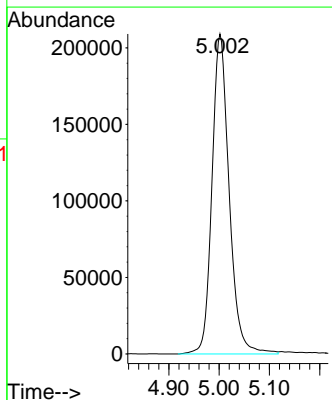
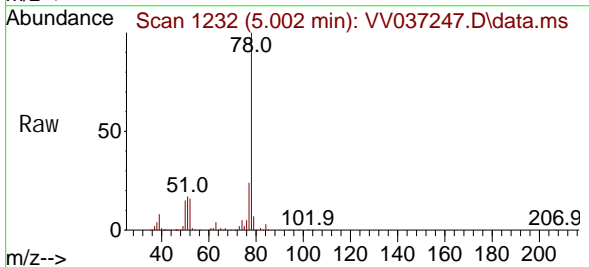


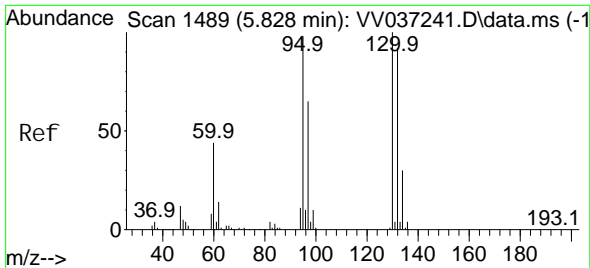
Tgt Ion: 117 Resp: 165870
 Ion Ratio Lower Upper
 117 100
 119 94.9 76.2 114.4



#33
 Benzene
 Concen: 5.041 ug/L
 RT: 5.002 min Scan# 1232
 Delta R.T. -0.003 min
 Lab File: VV037247.D
 Acq: 10 Sep 2024 14:59

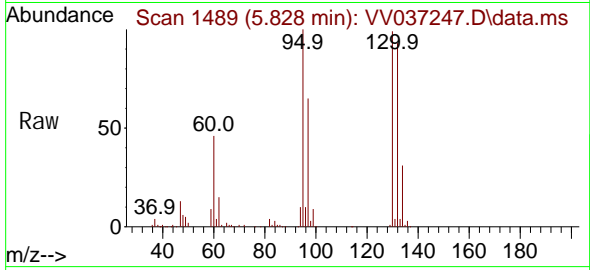
Tgt Ion: 78 Resp: 495781





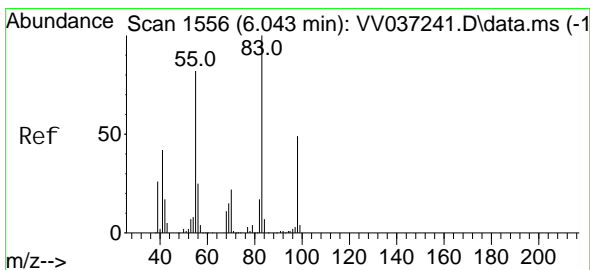
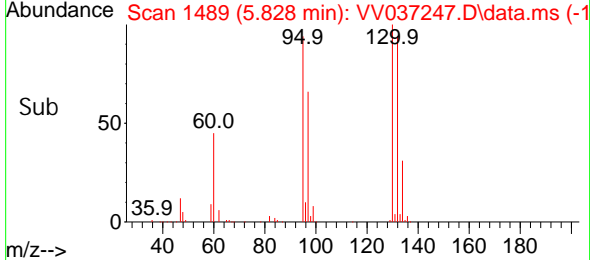
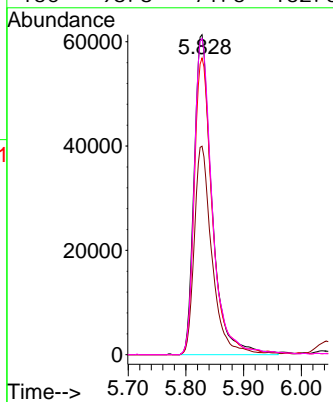
#34
 Trichloroethene
 Concen: 5.011 ug/L
 RT: 5.828 min Scan# 1489
 Delta R.T. 0.000 min
 Lab File: VV037247.D
 Acq: 10 Sep 2024 14:59

Instrument : MSVOA_V
 ClientSampleId :

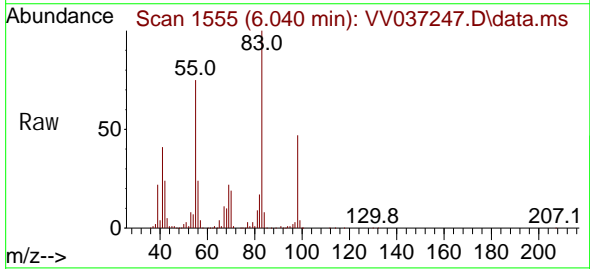


Tgt Ion: 95 Resp: 132816

| Ion | Ratio | Lower | Upper |
|-----|-------|-------|-------|
| 95 | 100 | | |
| 97 | 65.1 | 46.5 | 86.5 |
| 132 | 92.7 | 65.5 | 121.7 |
| 130 | 98.8 | 71.3 | 132.3 |

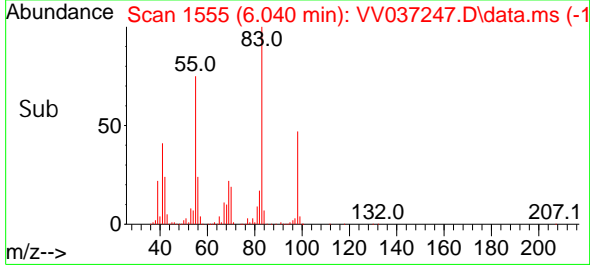
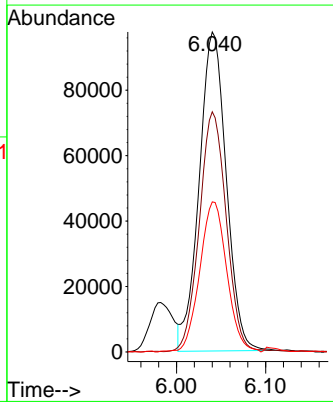


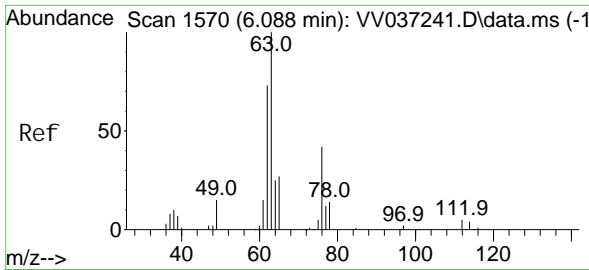
#35
 Methyl cycl ohexane
 Concen: 5.117 ug/L
 RT: 6.040 min Scan# 1555
 Delta R.T. -0.003 min
 Lab File: VV037247.D
 Acq: 10 Sep 2024 14:59



Tgt Ion: 83 Resp: 206191

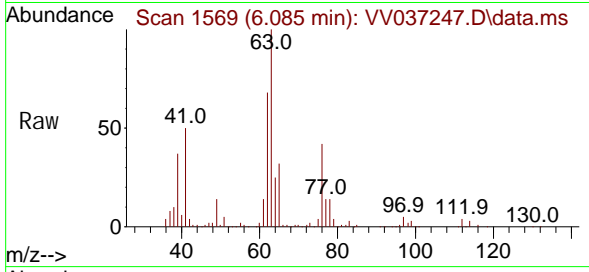
| Ion | Ratio | Lower | Upper |
|-----|-------|-------|-------|
| 83 | 100 | | |
| 55 | 74.6 | 60.3 | 90.5 |
| 98 | 47.0 | 38.2 | 57.4 |



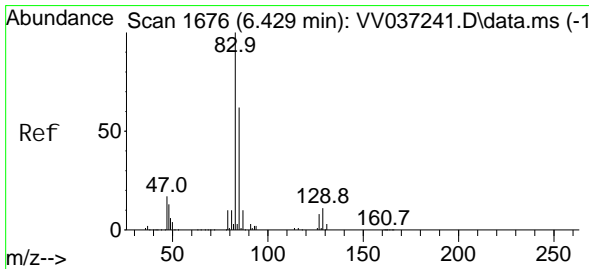
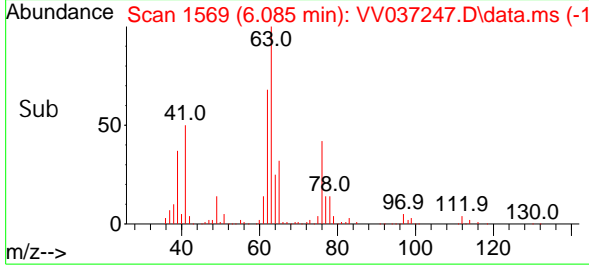
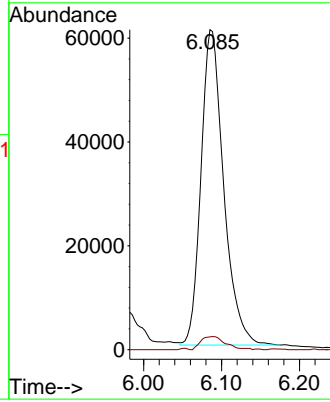


#37
 1, 2-Di chl oropropane
 Concen: 4.906 ug/L
 RT: 6.085 min Scan# 1569
 Delta R.T. -0.003 min
 Lab File: VV037247.D
 Acq: 10 Sep 2024 14:59

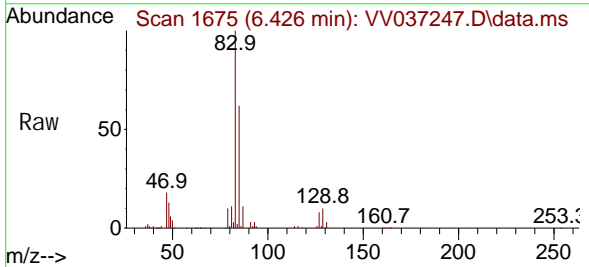
Instrument : MSVOA_V
 ClientSampleId :



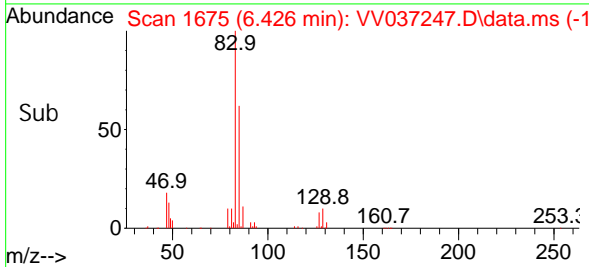
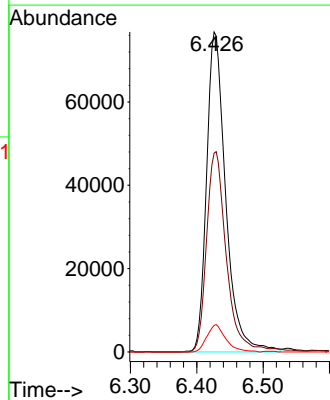
Tgt Ion: 63 Resp: 122757
 Ion Ratio Lower Upper
 63 100
 112 4.5 3.7 5.5

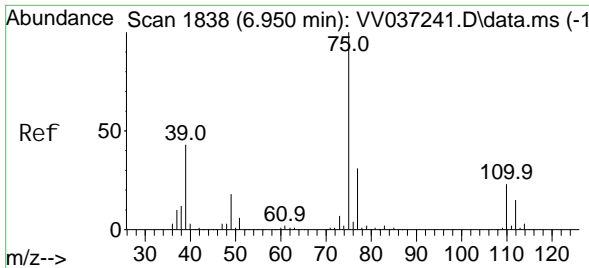


#38
 Bromodi chl oromethane
 Concen: 4.923 ug/L
 RT: 6.426 min Scan# 1675
 Delta R.T. -0.003 min
 Lab File: VV037247.D
 Acq: 10 Sep 2024 14:59



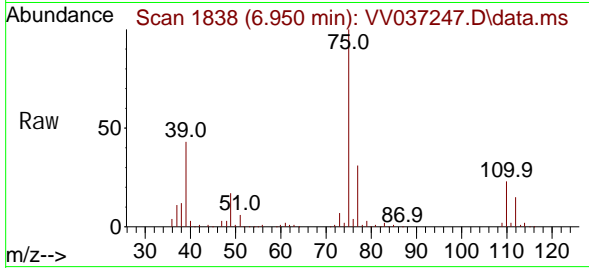
Tgt Ion: 83 Resp: 154219
 Ion Ratio Lower Upper
 83 100
 85 62.1 43.7 81.1
 127 8.3 6.7 10.1



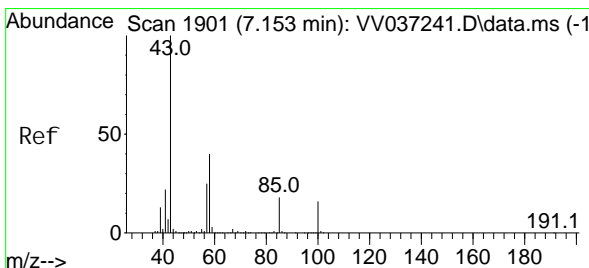
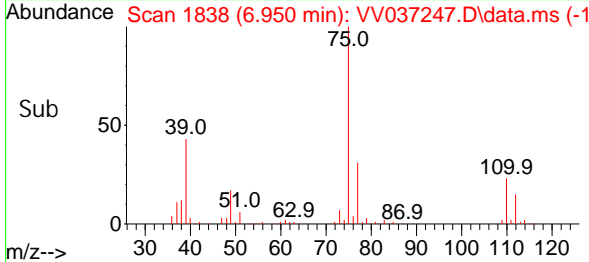
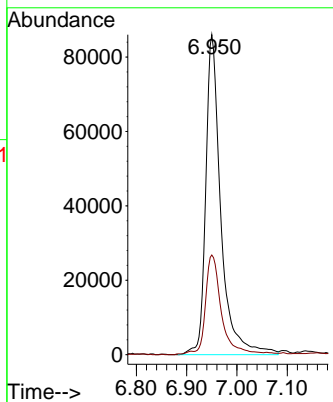


#39
 cis-1,3-Dichloropropene
 Concen: 4.944 ug/L
 RT: 6.950 min Scan# 1838
 Delta R.T. 0.000 min
 Lab File: VV037247.D
 Acq: 10 Sep 2024 14:59

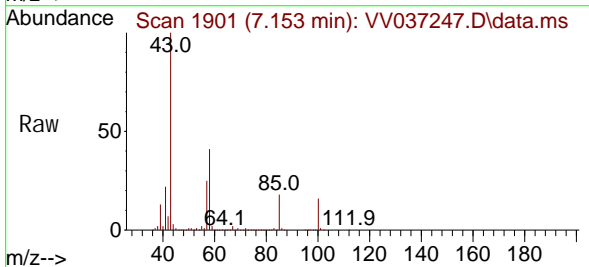
Instrument : MSVOA_V
 ClientSampleId :



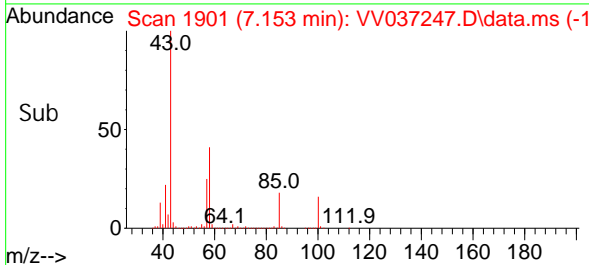
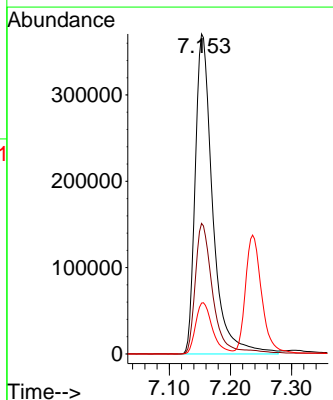
Tgt Ion: 75 Resp: 179209
 Ion Ratio Lower Upper
 75 100
 77 31.1 22.2 41.2

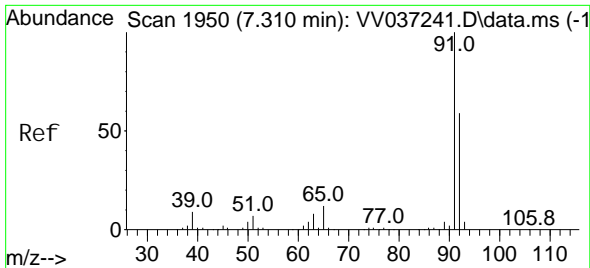


#40
 4-Methyl-2-pentanone
 Concen: 51.410 ug/L
 RT: 7.153 min Scan# 1901
 Delta R.T. 0.000 min
 Lab File: VV037247.D
 Acq: 10 Sep 2024 14:59



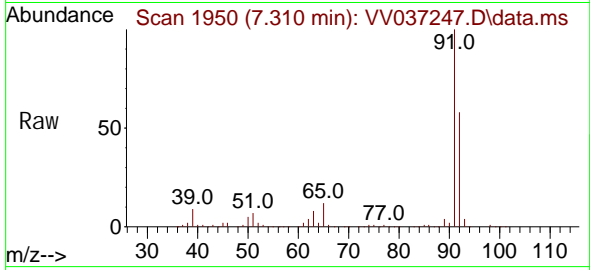
Tgt Ion: 43 Resp: 736529
 Ion Ratio Lower Upper
 43 100
 58 41.2 31.7 47.5
 100 15.5 12.6 19.0



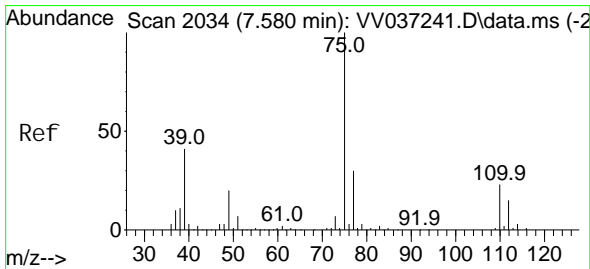
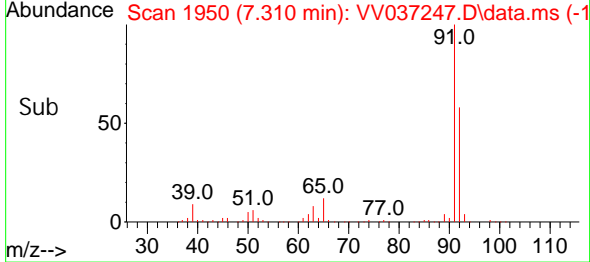
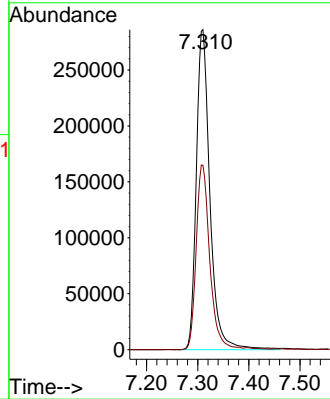


#42
 Tol uene
 Concen: 5.170 ug/L
 RT: 7.310 min Scan# 1950
 Delta R.T. 0.000 min
 Lab File: VV037247.D
 Acq: 10 Sep 2024 14:59

Instrument : MSVOA_V
 ClientSampleId :

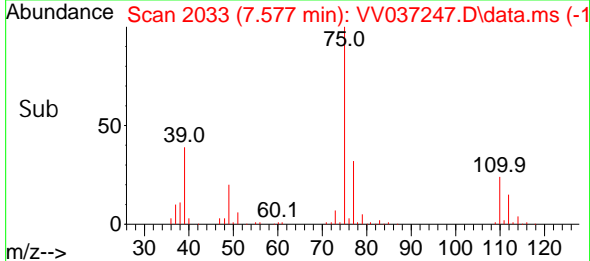
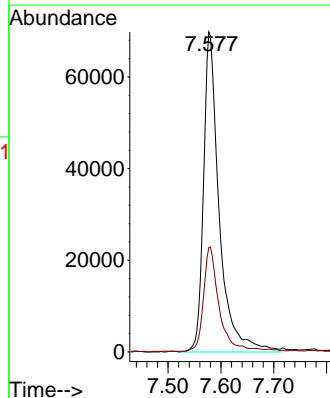
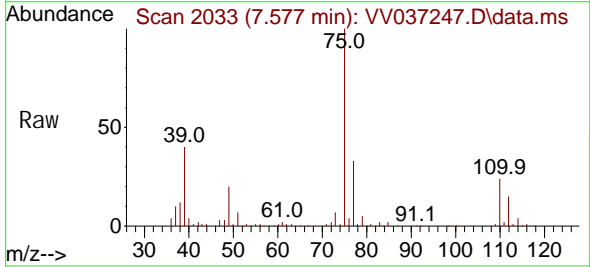


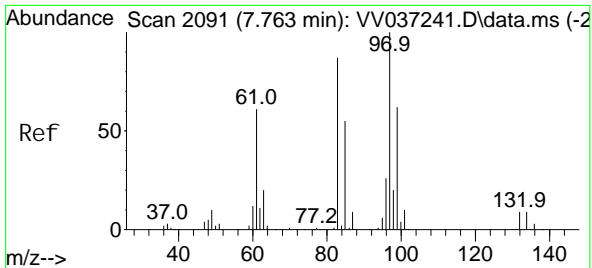
Tgt Ion: 91 Resp: 528995
 Ion Ratio Lower Upper
 91 100
 92 57.6 41.4 77.0



#44
 trans-1, 3-Di chl oroprene
 Concen: 4.931 ug/L
 RT: 7.577 min Scan# 2033
 Delta R.T. -0.003 min
 Lab File: VV037247.D
 Acq: 10 Sep 2024 14:59

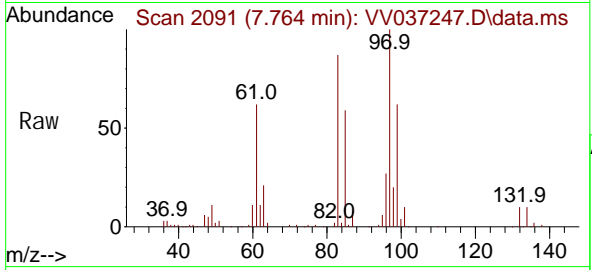
Tgt Ion: 75 Resp: 144228
 Ion Ratio Lower Upper
 75 100
 77 32.6 20.9 38.9





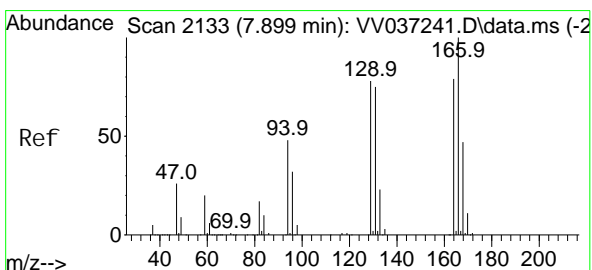
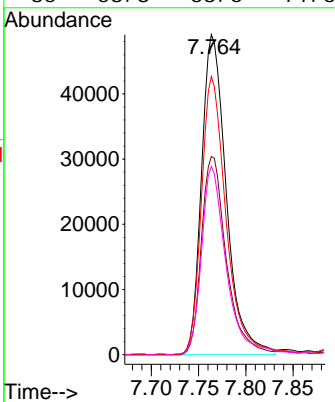
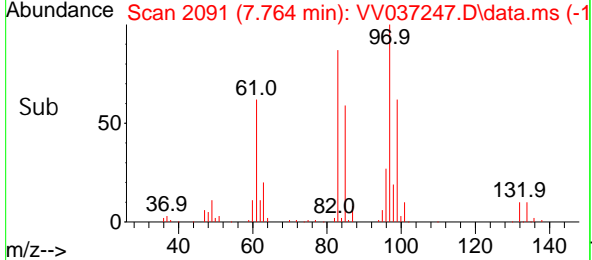
#45
 1,1,2-Trichloroethane
 Concen: 5.000 ug/L
 RT: 7.764 min Scan# 2091
 Delta R.T. 0.000 min
 Lab File: VV037247.D
 Acq: 10 Sep 2024 14:59

Instrument : MSVOA_V
 ClientSampleId :

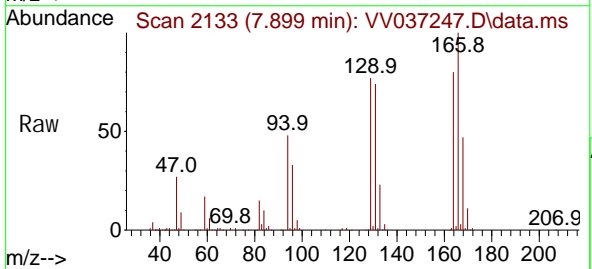


Tgt Ion: 97 Resp: 89559

| Ion | Ratio | Lower | Upper |
|-----|-------|-------|-------|
| 97 | 100 | | |
| 99 | 61.9 | 43.1 | 80.1 |
| 83 | 87.0 | 61.0 | 113.4 |
| 85 | 58.8 | 38.6 | 71.6 |

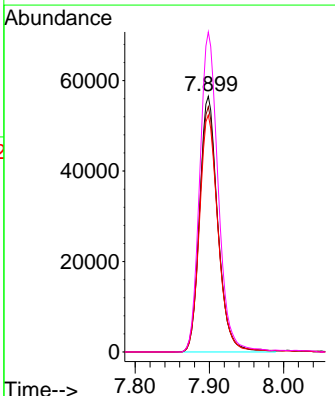
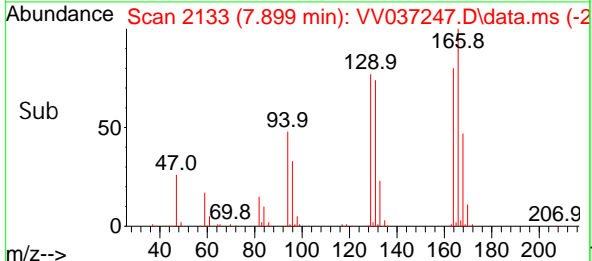


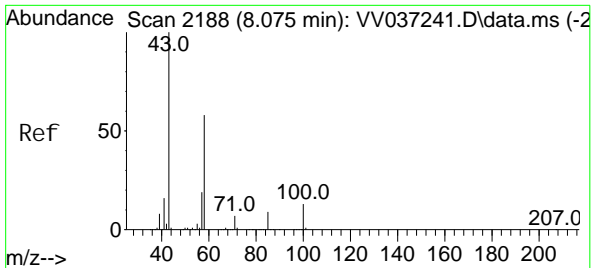
#47
 Tetrachloroethene
 Concen: 5.059 ug/L
 RT: 7.899 min Scan# 2133
 Delta R.T. 0.000 min
 Lab File: VV037247.D
 Acq: 10 Sep 2024 14:59



Tgt Ion: 164 Resp: 95962

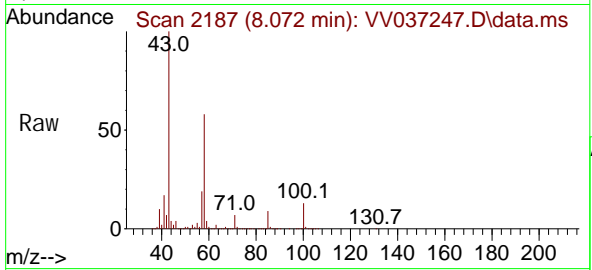
| Ion | Ratio | Lower | Upper |
|-----|-------|-------|-------|
| 164 | 100 | | |
| 129 | 95.9 | 69.2 | 128.4 |
| 131 | 92.7 | 66.6 | 123.8 |
| 166 | 125.2 | 88.8 | 165.0 |





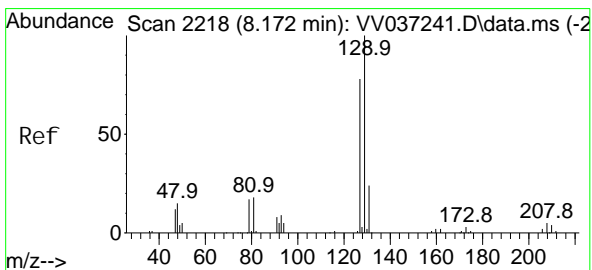
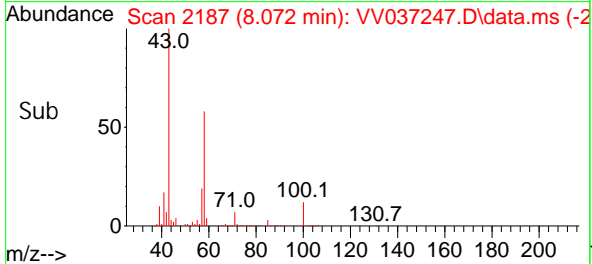
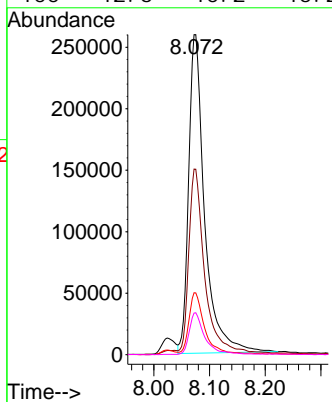
#48
 2-Hexanone
 Concen: 49.326 ug/L
 RT: 8.072 min Scan# 2187
 Delta R.T. -0.003 min
 Lab File: VV037247.D
 Acq: 10 Sep 2024 14:59

Instrument : MSVOA_V
 ClientSampleId :



Tgt Ion: 43 Resp: 516509

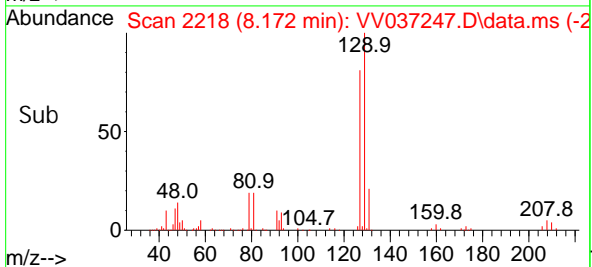
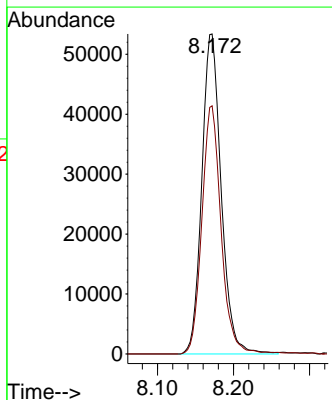
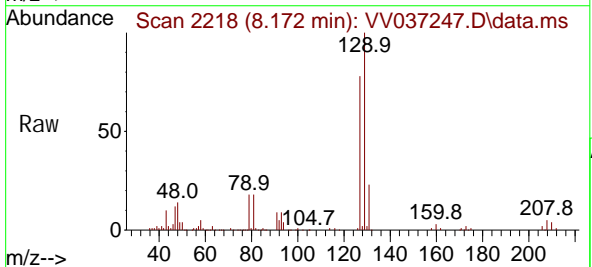
| Ion | Ratio | Lower | Upper |
|-----|-------|-------|-------|
| 43 | 100 | | |
| 58 | 56.3 | 45.5 | 68.3 |
| 57 | 18.2 | 15.3 | 22.9 |
| 100 | 12.6 | 10.2 | 15.2 |

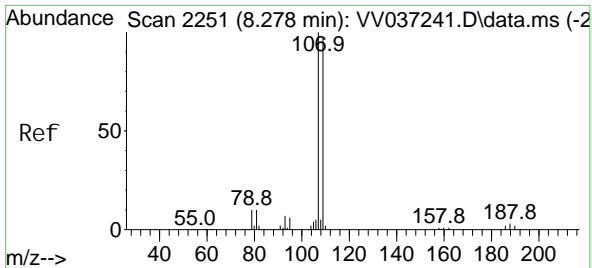


#49
 Di bromochloromethane
 Concen: 5.046 ug/L
 RT: 8.172 min Scan# 2218
 Delta R.T. 0.000 min
 Lab File: VV037247.D
 Acq: 10 Sep 2024 14:59

Tgt Ion: 129 Resp: 94677

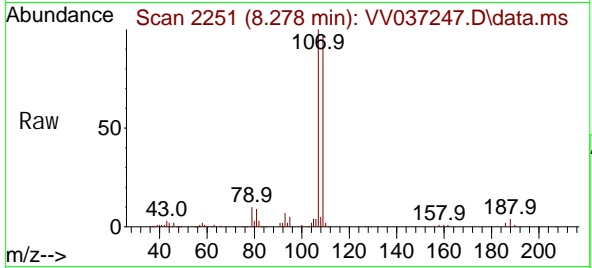
| Ion | Ratio | Lower | Upper |
|-----|-------|-------|-------|
| 129 | 100 | | |
| 127 | 77.6 | 54.5 | 101.1 |



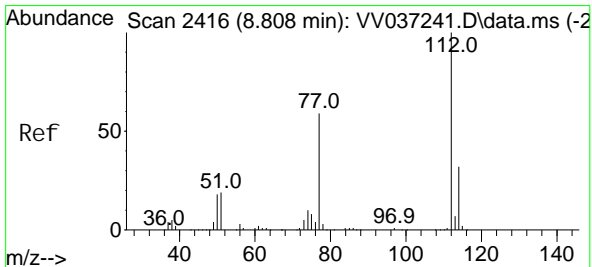
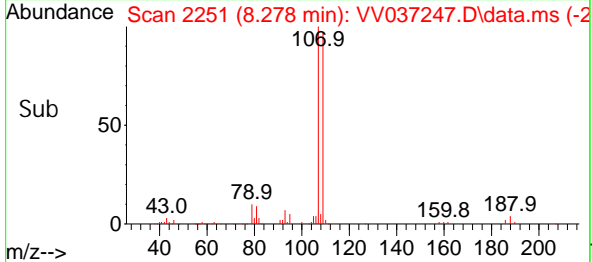
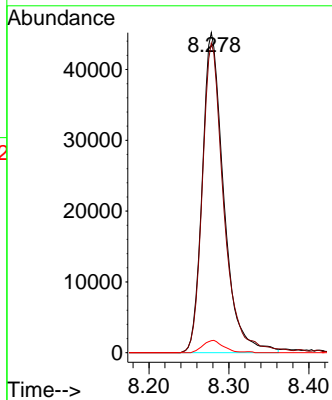


#50
 1, 2-Di bromoethane
 Concen: 4.996 ug/L
 RT: 8.278 min Scan# 21
 Delta R.T. 0.000 min
 Lab File: VV037247.D
 Acq: 10 Sep 2024 14:59

Instrument :
 MSVOA_V
 ClientSampleId :

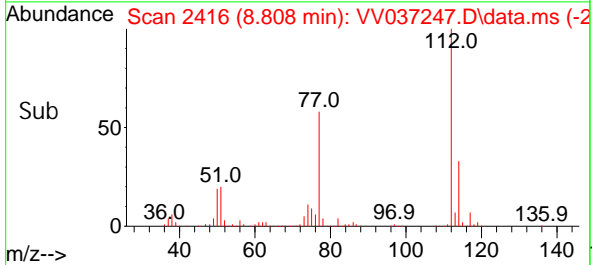
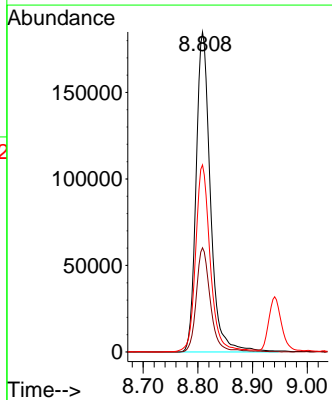
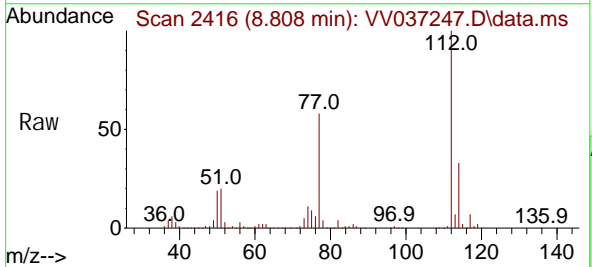


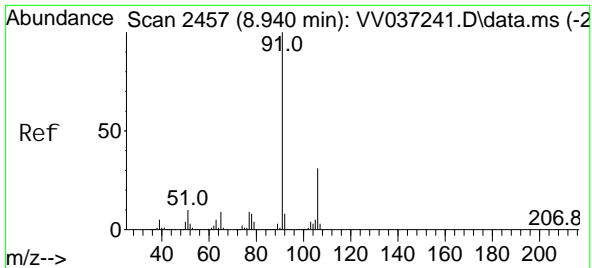
Tgt Ion: 107 Resp: 84551
 Ion Ratio Lower Upper
 107 100
 109 96.8 68.1 126.5
 188 3.8 2.7 4.1



#51
 Chlorobenzene
 Concen: 4.929 ug/L
 RT: 8.808 min Scan# 2416
 Delta R.T. 0.000 min
 Lab File: VV037247.D
 Acq: 10 Sep 2024 14:59

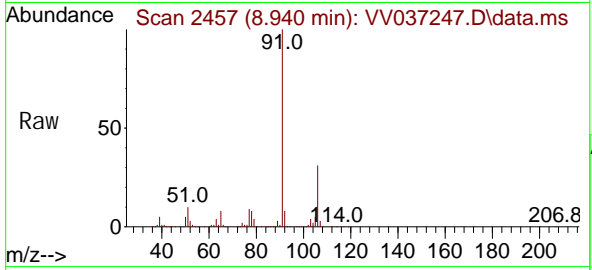
Tgt Ion: 112 Resp: 335833
 Ion Ratio Lower Upper
 112 100
 114 32.5 22.6 42.0
 77 58.4 47.0 70.6



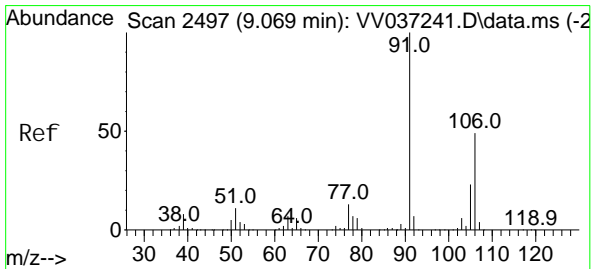
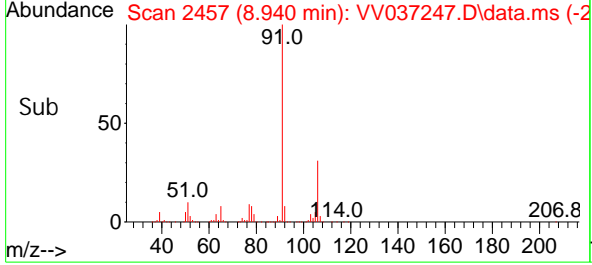
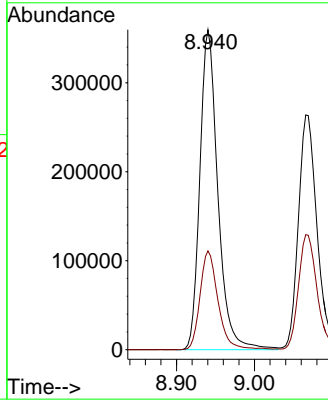


#52
 Ethyl benzene
 Concen: 5.045 ug/L
 RT: 8.940 min Scan# 2457
 Delta R.T. 0.000 min
 Lab File: VV037247.D
 Acq: 10 Sep 2024 14:59

Instrument :
 MSVOA_V
 ClientSampleId :

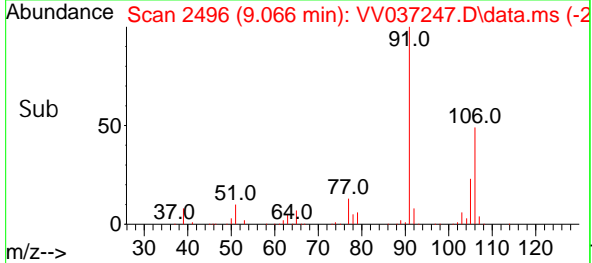
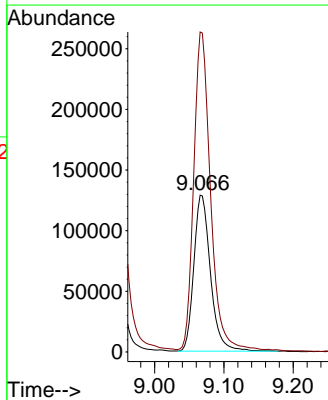
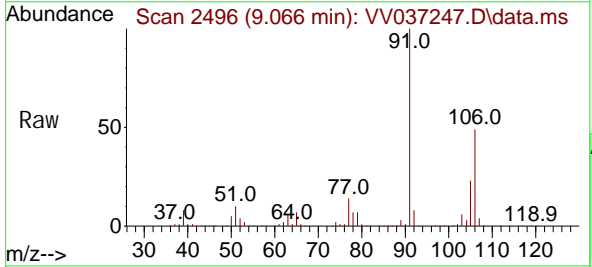


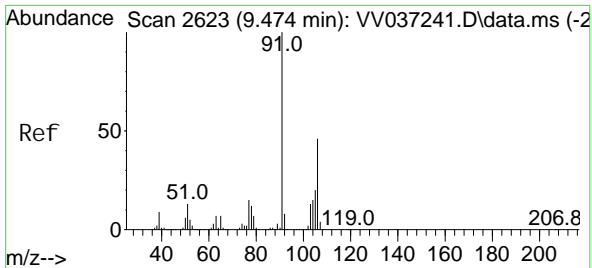
Tgt Ion: 91 Resp: 576030
 Ion Ratio Lower Upper
 91 100
 106 30.9 21.7 40.3



#53
 m, p-Xylene
 Concen: 5.124 ug/L
 RT: 9.066 min Scan# 2496
 Delta R.T. -0.003 min
 Lab File: VV037247.D
 Acq: 10 Sep 2024 14:59

Tgt Ion: 106 Resp: 215273
 Ion Ratio Lower Upper
 106 100
 91 204.0 143.3 266.1

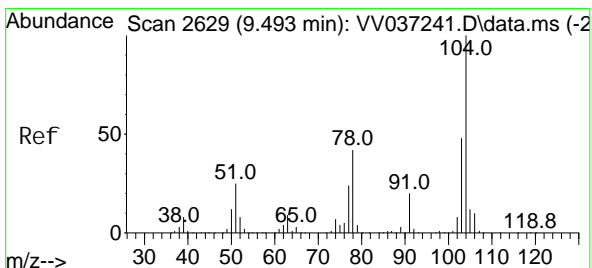
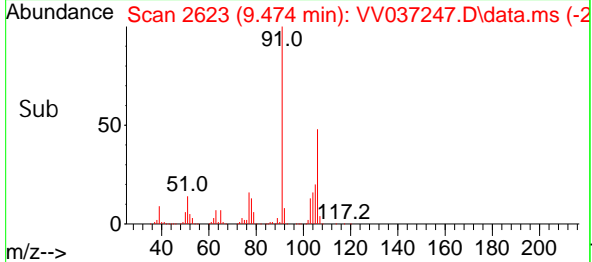
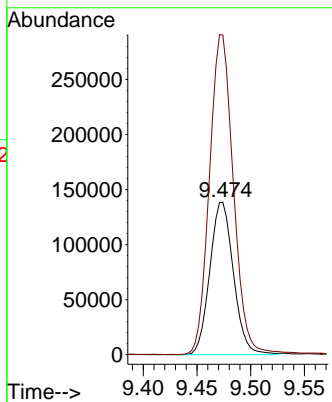
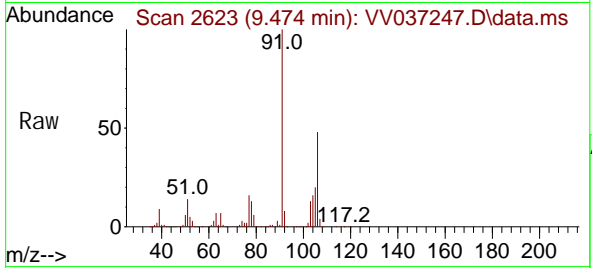




#54
 o-Xyl ene
 Concen: 5.106 ug/L
 RT: 9.474 min Scan# 2623
 Delta R.T. 0.000 min
 Lab File: VV037247.D
 Acq: 10 Sep 2024 14:59

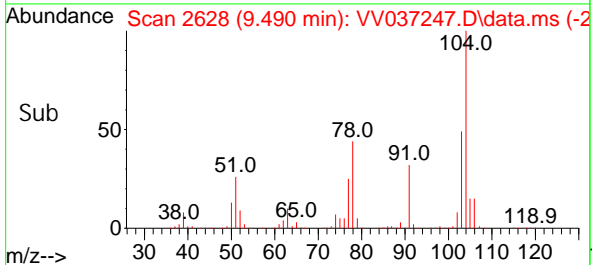
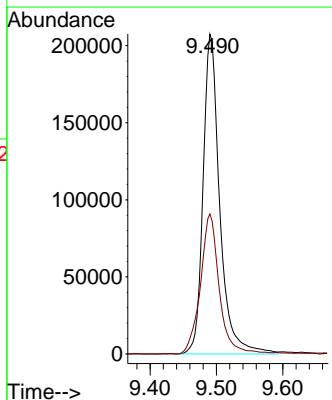
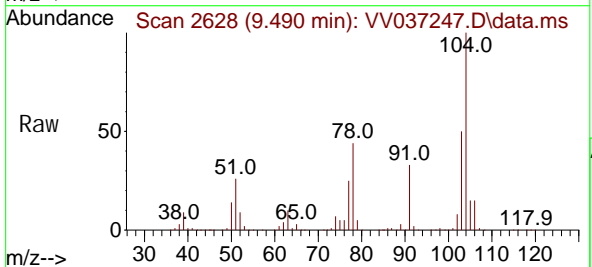
Instrument : MSVOA_V
 ClientSampleId :

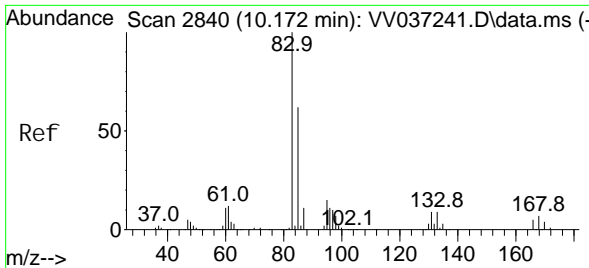
Tgt Ion: 106 Resp: 212372
 Ion Ratio Lower Upper
 106 100
 91 209.6 151.8 282.0



#55
 Styrene
 Concen: 5.150 ug/L
 RT: 9.490 min Scan# 2628
 Delta R.T. -0.003 min
 Lab File: VV037247.D
 Acq: 10 Sep 2024 14:59

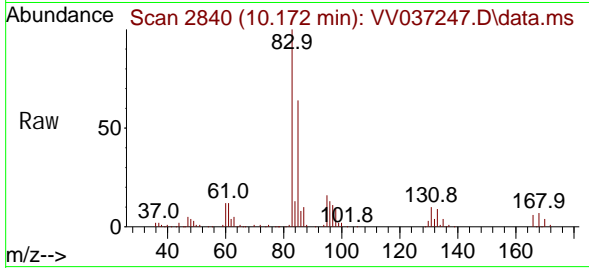
Tgt Ion: 104 Resp: 363166
 Ion Ratio Lower Upper
 104 100
 78 43.8 29.2 54.2



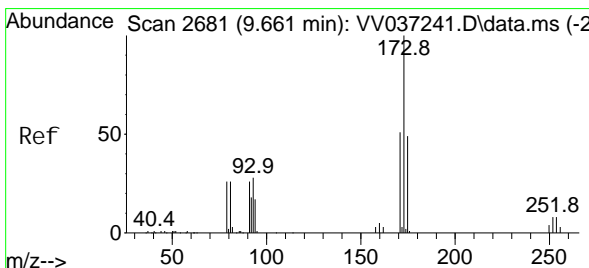
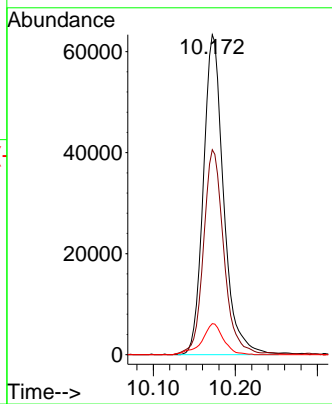
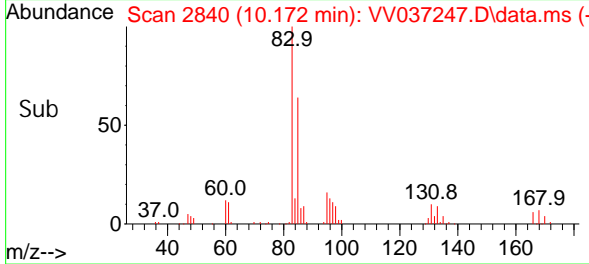


#57
 1, 1, 2-Tetrachloroethane
 Concen: 5.010 ug/L
 RT: 10.172 min Scan# 2840
 Delta R.T. 0.000 min
 Lab File: VV037247.D
 Acq: 10 Sep 2024 14:59

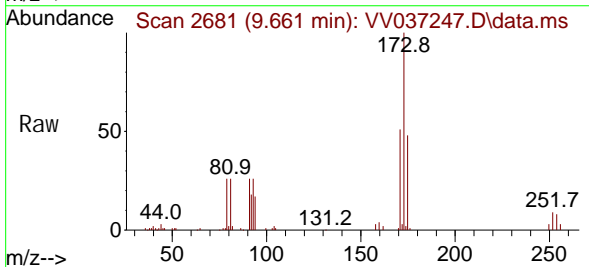
Instrument : MSVOA_V
 ClientSampleId :



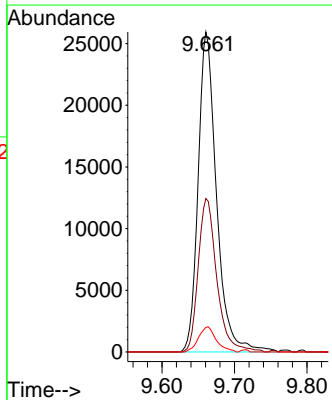
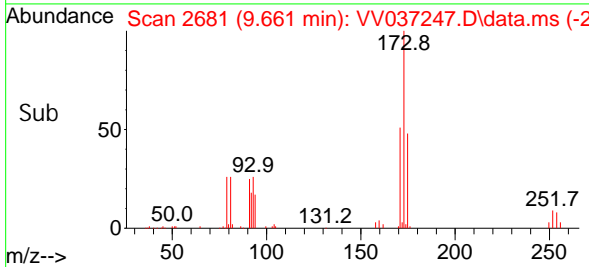
Tgt Ion: 83 Resp: 108409
 Ion Ratio Lower Upper
 83 100
 85 64.0 43.2 80.2
 131 9.7 6.9 10.3

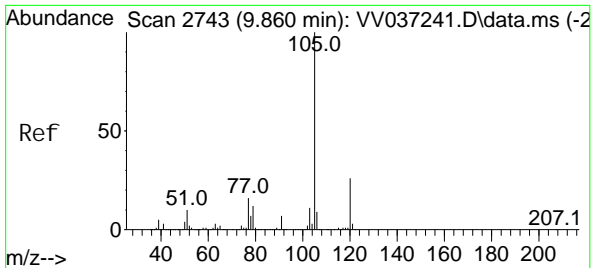


#59
 Bromoform
 Concen: 4.757 ug/L
 RT: 9.661 min Scan# 2681
 Delta R.T. 0.000 min
 Lab File: VV037247.D
 Acq: 10 Sep 2024 14:59



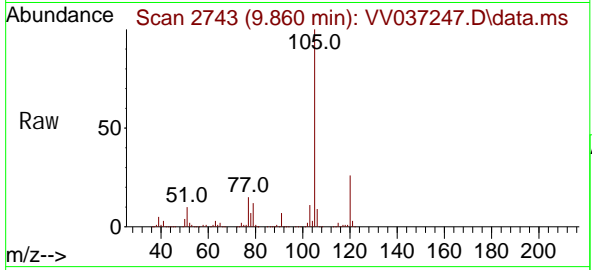
Tgt Ion: 173 Resp: 45651
 Ion Ratio Lower Upper
 173 100
 175 48.4 38.7 58.1
 254 7.6 6.8 10.2



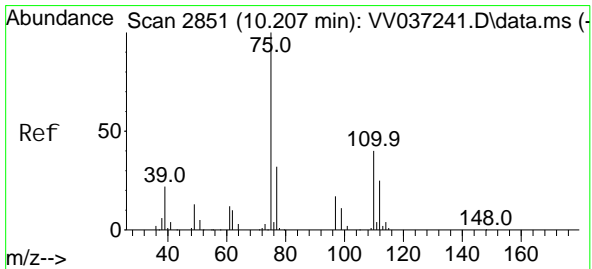
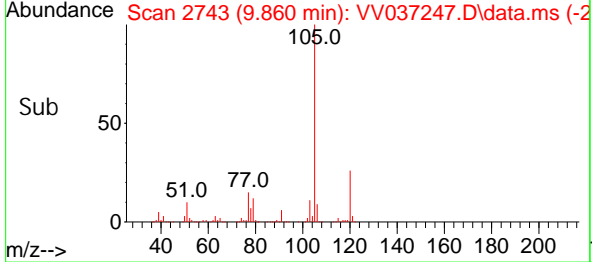
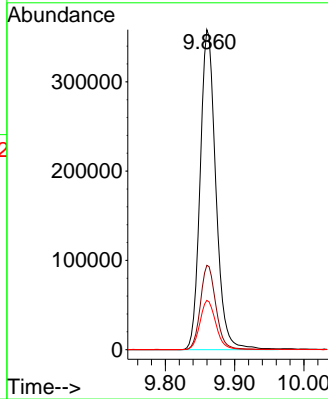


#60
 Isopropyl benzene
 Concen: 5.143 ug/L
 RT: 9.860 min Scan# 2743
 Delta R.T. 0.000 min
 Lab File: VV037247.D
 Acq: 10 Sep 2024 14:59

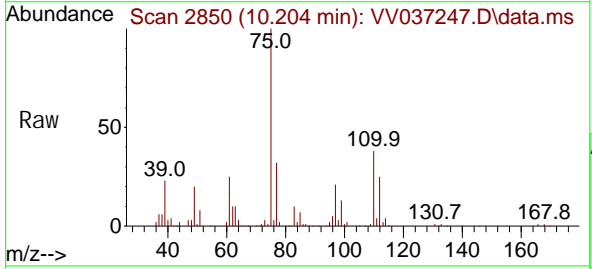
Instrument : MSVOA_V
 ClientSampleId :



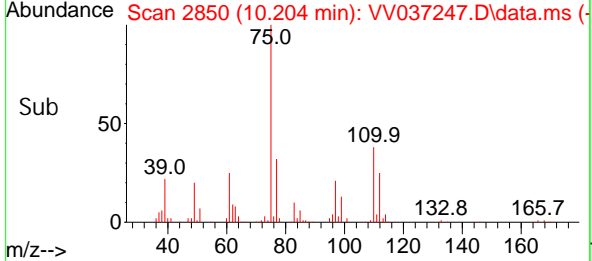
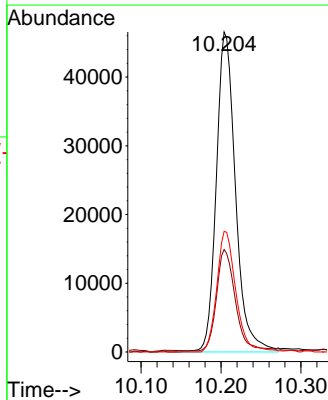
Tgt Ion: 105 Resp: 564662
 Ion Ratio Lower Upper
 105 100
 120 26.1 20.2 30.4
 77 15.5 12.7 19.1

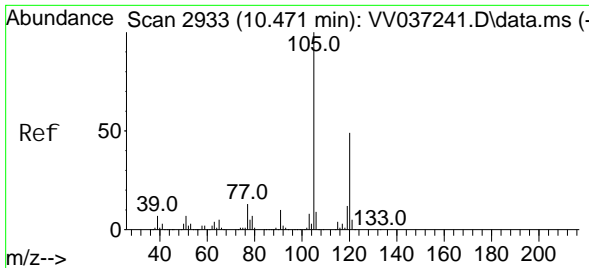


#61
 1,2,3-Trichloropropane
 Concen: 5.194 ug/L
 RT: 10.204 min Scan# 2850
 Delta R.T. -0.003 min
 Lab File: VV037247.D
 Acq: 10 Sep 2024 14:59



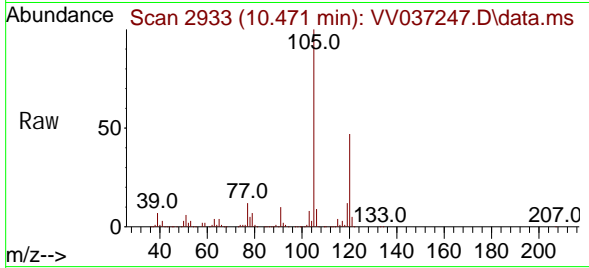
Tgt Ion: 75 Resp: 77537
 Ion Ratio Lower Upper
 75 100
 77 31.2 25.6 38.4
 110 37.5 31.0 46.4



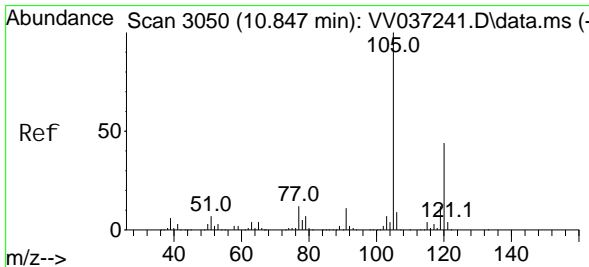
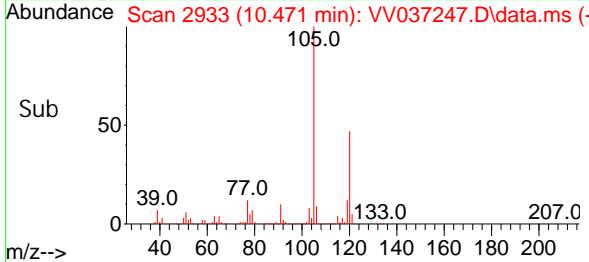
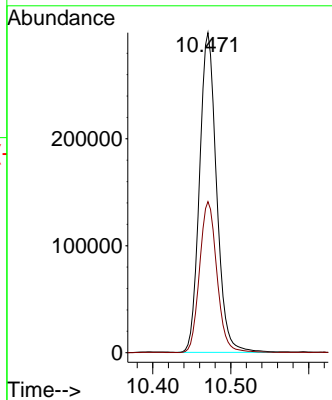


#62
 1, 3, 5-Tri methyl benzene
 Concen: 5.217 ug/L
 RT: 10.471 min Scan# 2933
 Delta R.T. 0.000 min
 Lab File: VV037247.D
 Acq: 10 Sep 2024 14:59

Instrument : MSVOA_V
 ClientSampleId :

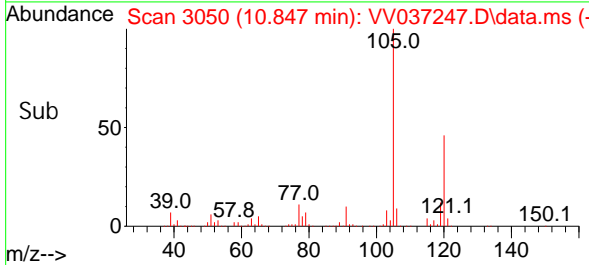
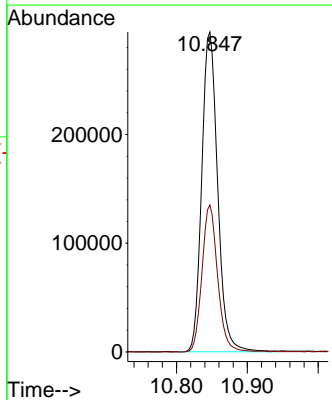
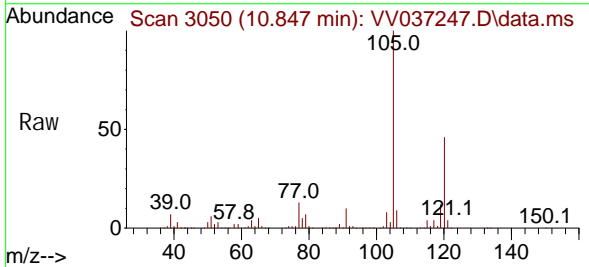


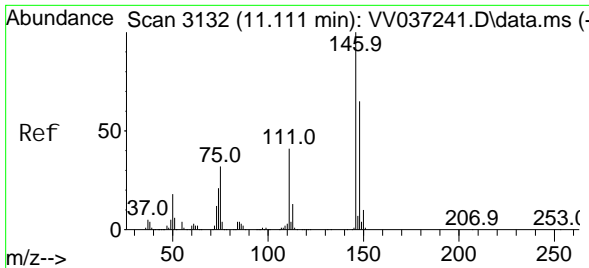
Tgt Ion: 105 Resp: 454196
 Ion Ratio Lower Upper
 105 100
 120 48.1 38.6 57.8



#63
 1, 2, 4-Tri methyl benzene
 Concen: 5.235 ug/L
 RT: 10.847 min Scan# 3050
 Delta R.T. 0.000 min
 Lab File: VV037247.D
 Acq: 10 Sep 2024 14:59

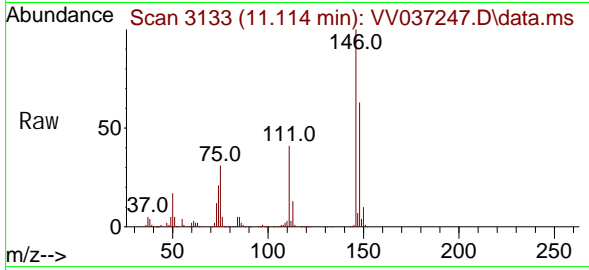
Tgt Ion: 105 Resp: 457870
 Ion Ratio Lower Upper
 105 100
 120 45.2 36.2 54.2



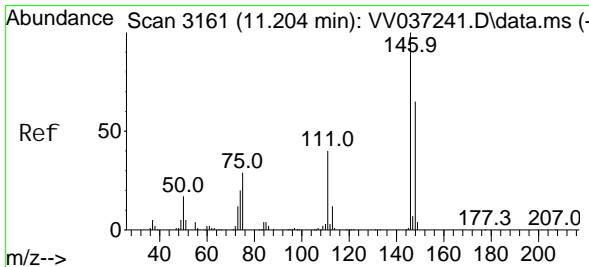
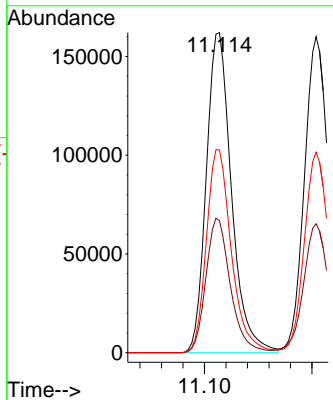
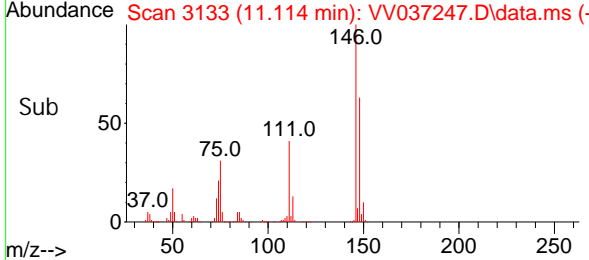


#64
 1, 3-Di chl orobenzene
 Concen: 5.079 ug/L
 RT: 11.114 min Scan# 3113
 Delta R.T. 0.003 min
 Lab File: VV037247.D
 Acq: 10 Sep 2024 14:59

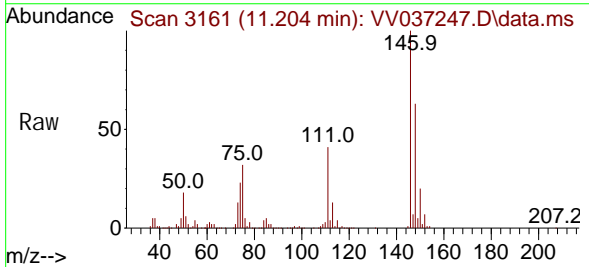
Instrument : MSVOA_V
 ClientSampleId :



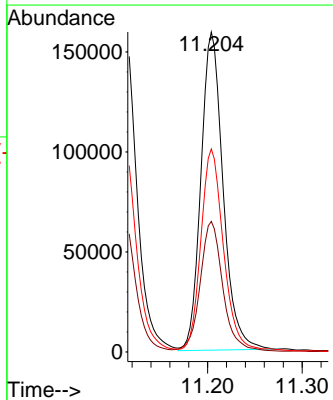
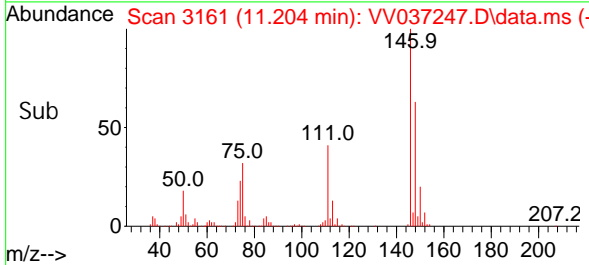
Tgt Ion: 146 Resp: 263612
 Ion Ratio Lower Upper
 146 100
 111 41.3 28.8 53.4
 148 63.3 45.6 84.6

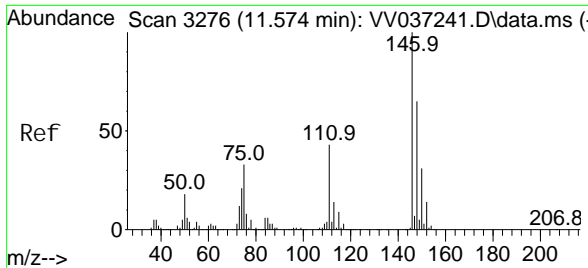


#65
 1, 4-Di chl orobenzene
 Concen: 4.864 ug/L
 RT: 11.204 min Scan# 3161
 Delta R.T. 0.000 min
 Lab File: VV037247.D
 Acq: 10 Sep 2024 14:59



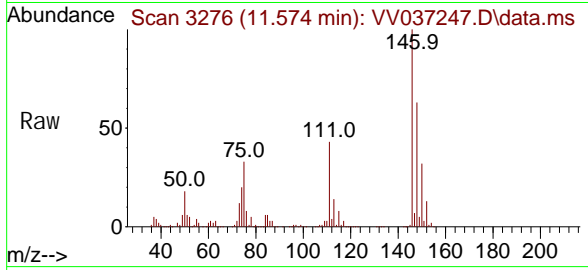
Tgt Ion: 146 Resp: 258888
 Ion Ratio Lower Upper
 146 100
 111 40.8 28.2 52.4
 148 63.4 45.8 85.0





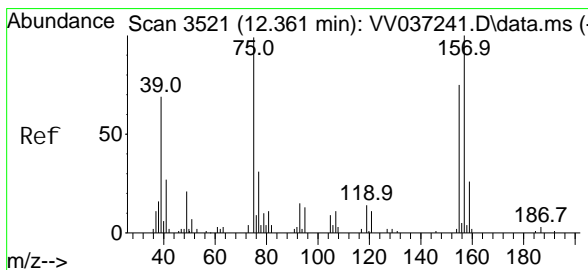
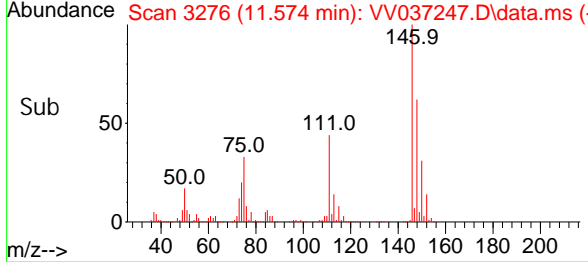
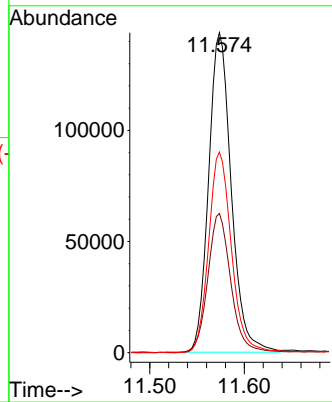
#67
 1, 2-Di chl orobenzene
 Concen: 4.969 ug/L
 RT: 11.574 min Scan# 31
 Del ta R. T. 0.000 min
 Lab File: VV037247.D
 Acq: 10 Sep 2024 14:59

Instrument : MSVOA_V
 ClientSampleId :

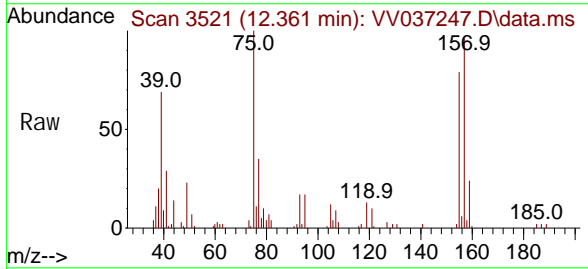


Tgt Ion: 146 Resp: 239119

| Ion | Ratio | Lower | Upper |
|-----|-------|-------|-------|
| 146 | 100 | | |
| 111 | 43.5 | 34.4 | 51.6 |
| 148 | 62.7 | 51.8 | 77.6 |

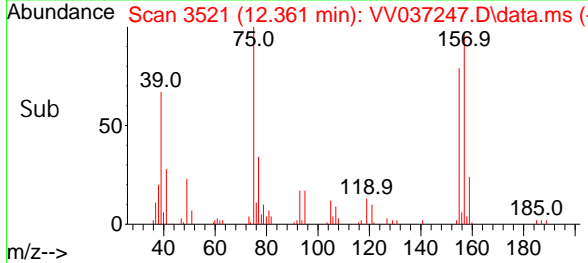
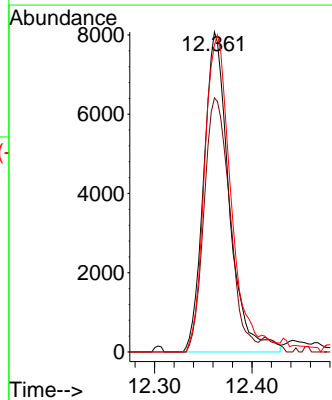


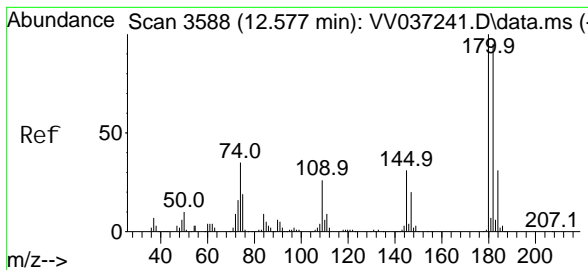
#68
 1, 2-Di bromo-3- chl oropropane
 Concen: 4.717 ug/L
 RT: 12.361 min Scan# 3521
 Del ta R. T. 0.000 min
 Lab File: VV037247.D
 Acq: 10 Sep 2024 14:59



Tgt Ion: 75 Resp: 14602

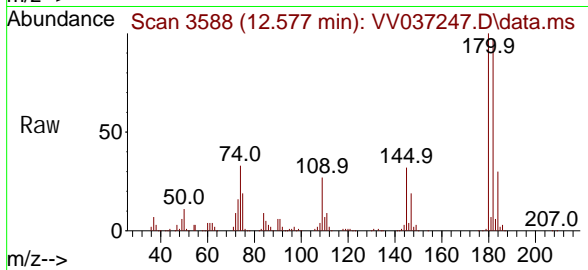
| Ion | Ratio | Lower | Upper |
|-----|-------|-------|-------|
| 75 | 100 | | |
| 155 | 79.4 | 60.6 | 90.8 |
| 157 | 96.0 | 81.1 | 121.7 |



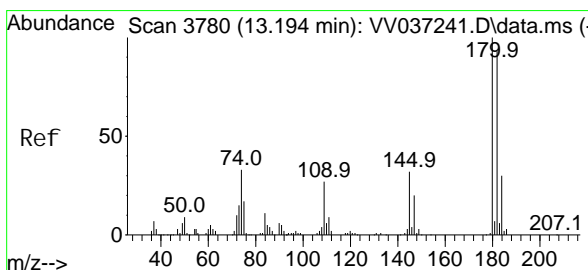
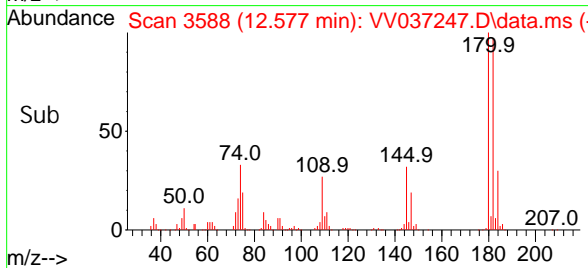
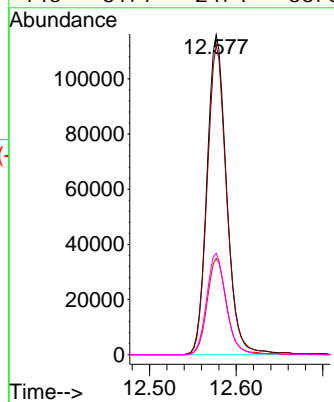


#69
 1,3,5-Tri chlorobenzene
 Concen: 4.943 ug/L
 RT: 12.577 min Scan# 31
 Delta R.T. 0.000 min
 Lab File: VV037247.D
 Acq: 10 Sep 2024 14:59

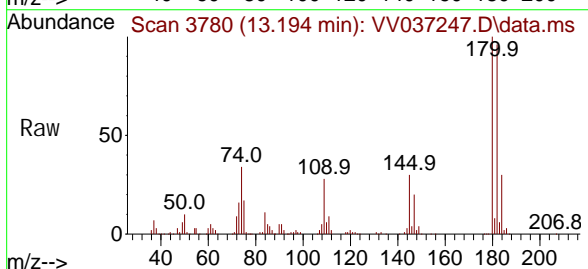
Instrument :
 MSVOA_V
 ClientSampleId :



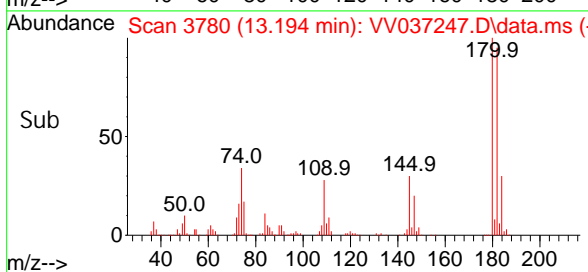
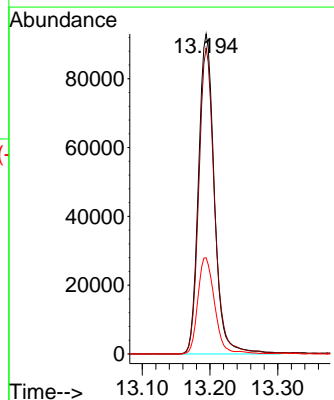
Tgt Ion: 180 Resp: 182968
 Ion Ratio Lower Upper
 180 100
 182 95.8 74.3 111.5
 184 30.1 24.3 36.5
 145 31.7 24.4 36.6

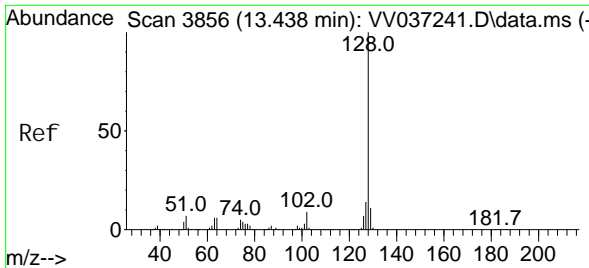


#70
 1,2,4-tri chlorobenzene
 Concen: 4.956 ug/L
 RT: 13.194 min Scan# 3780
 Delta R.T. 0.000 min
 Lab File: VV037247.D
 Acq: 10 Sep 2024 14:59



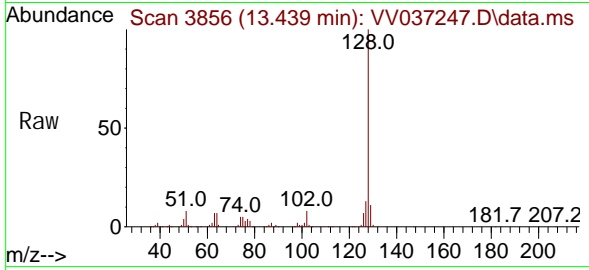
Tgt Ion: 180 Resp: 151019
 Ion Ratio Lower Upper
 180 100
 182 94.3 75.4 113.0
 145 31.3 25.8 38.6



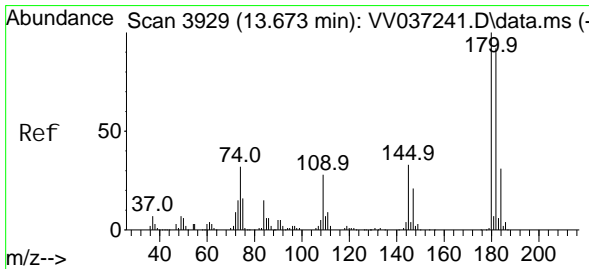
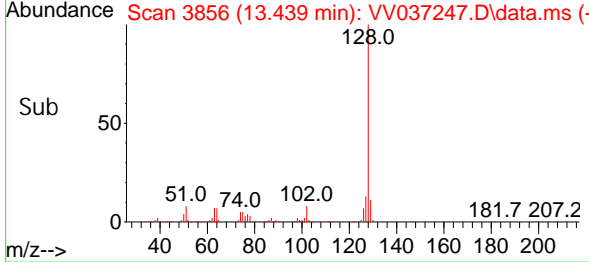
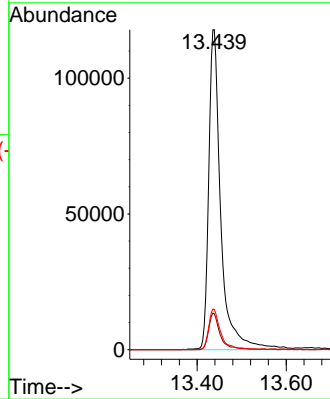


#71
 Naphthalene
 Concen: 4.743 ug/L
 RT: 13.439 min Scan# 3856
 Delta R.T. 0.000 min
 Lab File: VV037247.D
 Acq: 10 Sep 2024 14:59

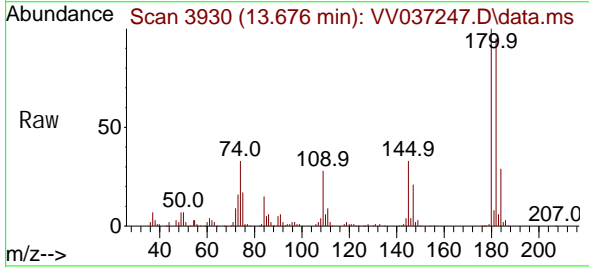
Instrument : MSVOA_V
 ClientSampleId :



Tgt Ion: 128 Resp: 220852
 Ion Ratio Lower Upper
 128 100
 129 10.8 8.6 12.8
 127 12.1 10.2 15.2



#72
 1,2,3-Trichlorobenzene
 Concen: 5.021 ug/L
 RT: 13.676 min Scan# 3930
 Delta R.T. 0.003 min
 Lab File: VV037247.D
 Acq: 10 Sep 2024 14:59



Tgt Ion: 180 Resp: 126585
 Ion Ratio Lower Upper
 180 100
 182 95.0 73.4 110.0
 145 34.0 27.2 40.8

